



## JETTEN 37 SEDAN CLASSIC



# JETTEN 37 SEDAN CLASSIC

## BROKER'S COMMENTS

This Jetten 37 Sedan with open cockpit is a wonderful motor yacht for exploring Europe. Everything has been kept on one level living as much as possible to ensure a comfortable and safe stay on board. She is well equipped with options such as; a stronger engine, bow and stern thruster, double glazing, heating, etc. Lots of storage space including a large storage room under the cockpit floor. The headway (with the mast lowered) is 2.45 meters and this guarantees a large sailing area from Friesland, the Moselle to deep into France. Or along the coast to the Baltic Sea. What are your travelplans?

*Marc Weijenberg*

## SPECIFICATIONS

<b>Dimensions</b>	10.76 x 3.97 x 1.05 (m)	<b>Builder</b>	Jetten Jachtbouw BV
<b>Built</b>	2009	<b>Cabins</b>	1
<b>Material</b>	Steel	<b>Berths</b>	4
<b>Engine(s)</b>	1 x Volvo Penta D3-110 diesel	<b>Hp/Kw</b>	110.00 (hp), 80.96 (kw)
<b>Asking price</b>	sold (VAT )	<b>Lying</b>	The Netherlands

## CONTACT

<b>Sales office</b>	De Valk Thuishaven	<b>Telephone</b>	+31 35 5829042
<b>Address</b>	Peperstraat 7 1411 PX Naarden NL	<b>E-mail</b>	thuishaven@devalk.nl

## DISCLAIMER

These particulars are given in good faith as supplied but cannot be guaranteed.



# JETTEN 37 SEDAN CLASSIC

## GENERAL

Model	JETTEN 37 SEDAN CLASSIC
Type	motor yacht
LOA (m)	10,76
Beam (m)	3,97
Draft (m)	1,05
Air draft (m)	2,45
Headroom (m)	1,94
Year built	2009
Builder	Jetten Jachtbouw BV
Country	The Netherlands
Designer	Vripack Yachtdesign
Displacement (t)	12
CE norm	C
Hull material	steel
Hull colour	blue
Hull thickness (mm)	5
Hull shape	hard chine
Superstructure material	steel
Superstructure (mm)	4
Rubbing strake	fender rope
Deck material	steel
Deck finish	non-skid paint
Cockpit deck finish	synthetic teak
Dorades	2 x stainless steel
Window frame	aluminium
Window material	double glazing
Deckhatch	with flyscreen Gebp
Portholes	Gebo
Insulation	rockwool
Mast can be lowered	hydraulic



# JETTEN 37 SEDAN CLASSIC

Fuel tank (litre)	steel 600
Level indicator (fuel tank)	yes
Freshwater tank (litre)	stainless steel 550
Level indicator (freshwater)	yes
Blackwater tank (litre)	polyethylene 170
Level indicator (blackwater)	yes
Blackwater tank extraction	deck extraction + pump
Wheel steering	hydraulic Ultraflex
Emergency tiller	yes
More info on paintwork	hull newly painted in 2023
Extra info	Large extra opening window in salon, facing forward buddy-seat, helmsman seat and 4-way folding teak opening doors to connect the salon onto the cockpit area.

## ACCOMMODATION

Cabins	1
Berths	4
Interior	mahogany
Floor	carpet
Open cockpit	yes
Pilot house/deck saloon	yes
Headroom saloon (m)	1,93
Heating	diesel ducted hot air Eberspacher
Dinette to convert into berth	L-shape 1,95 x 1,15
Opening door to cockpit	in solid teak
Galley	yes
Sink	stainless steel 1 x
Cooker	calor gas Smev 3-burner/pits/flammig
Oven	Tristar 220v
Fridge	with freezer compartment Waeco 12v
Hot water system	220V + engine 40 ltr Indel
Water pressure system	electrical



# JETTEN 37 SEDAN CLASSIC

Owners cabin	double bed
Bed length (m)	1,95 x 1,40 with slatted mattress, headroom 1,90 m
Wardrobe	hanging/drawers/shelves
Bathroom	separate
Toilet	separate
Toilet system	manual
Wash basin	in the bathroom
Shower	separate

## MACHINERY

No of engines	1
Make	Volvo Penta
Type	D3-110
HP	110
kW	80.96
Fuel	diesel
Year installed	2009
Maximum speed (kn)	8
Cruising speed (kn)	6.5
Consumption (l/hr)	4,5
Engine hours	1295
Engine cooling system	freshwater heat exchanger
Drive	shaft
Shaft seal	Volvo-seal
Engine controls	bowden cable
Gearbox	Hurth
Bowthruster	electric Vetus 95kgf
Sternthruster	electric Vetus
Exhaust	watercooled
Thrust bearing	Aqua Drive
Propeller type	fixed



# JETTEN 37 SEDAN CLASSIC

Propeller blades	4
Propeller shaft material	stainless steel
Shaft lubrication	water
Electric bilge pump	yes
Electrical installation	12/220v
Start battery	1 x 12v
Service battery	3 x 12v (2023)
Bowthruster battery	2 x Optima
Battery monitor	Mastervolt
Battery charger/inverter	Mastervolt 24v/220v/2000watt/60amp
Shorepower	with cable

## NAVIGATION

Depth sounder/log	Raymarine ST60
VHF	Icom IC-M401E
Plotter/GPS	Garmin GPS 158i
Electronic chart(s)	yes
Navigation lights	yes

## EQUIPMENT

Cockpit cover	(2023)
Cockpit cushions	yes
Cockpit table	yes
Cockpit chairs	2 x
Bathing platform	yes
Boarding ladder	stainless steel
Transom door	yes
Anchor	Pool
Anchor chain	yes
Windlass	manual Lofrans
Sea railing	stainless steel



# JETTEN 37 SEDAN CLASSIC

Grab rail (superstructure)	stainless steel
Railing side opening gates	with step 2 x
Lifebuoy	yes
Wiper	2 x
Horn	electric
Fenders	yes
Mooring lines	yes
TV	fold-up type in ceiling
Radio-cd player	yes
Speakers in salon	yes
Extra info	cockpit lighting





# JETTEN 37 SEDAN CLASSIC





## JETTEN 37 SEDAN CLASSIC





## JETTEN 37 SEDAN CLASSIC



## JETTEN 37 SEDAN CLASSIC

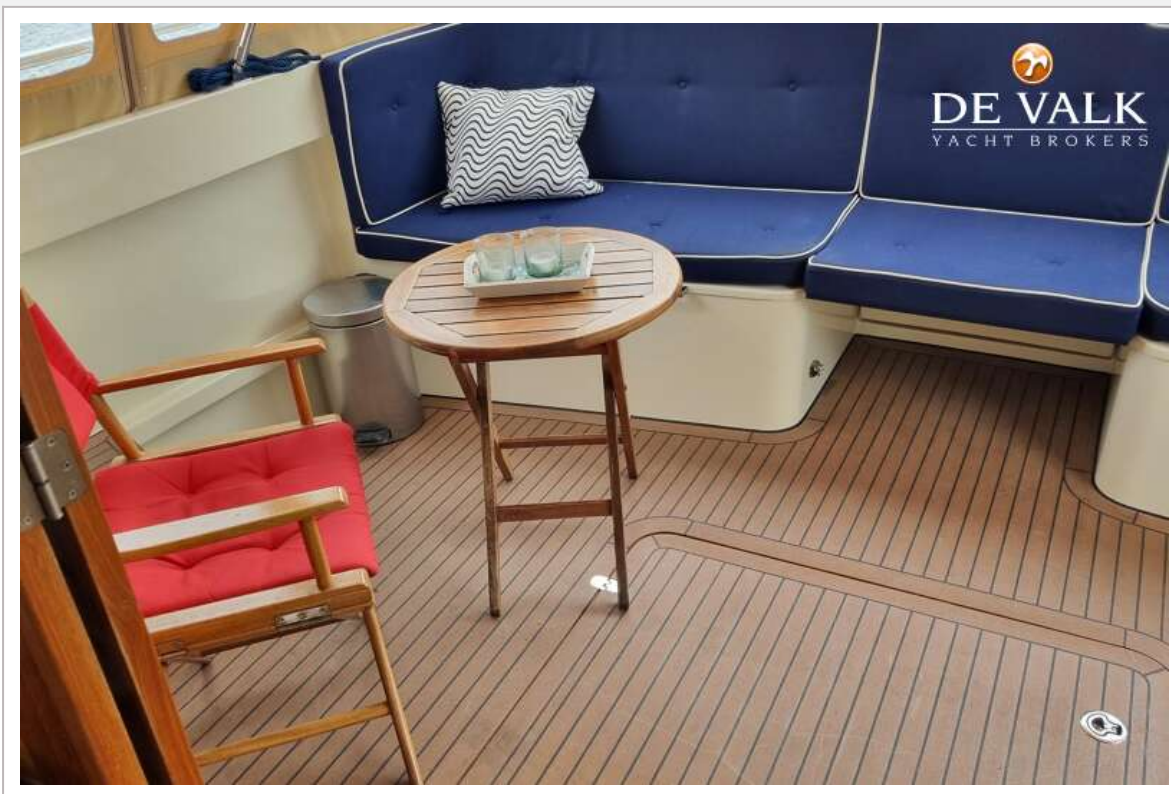




## JETTEN 37 SEDAN CLASSIC



## JETTEN 37 SEDAN CLASSIC





## JETTEN 37 SEDAN CLASSIC



## JETTEN 37 SEDAN CLASSIC





## JETTEN 37 SEDAN CLASSIC

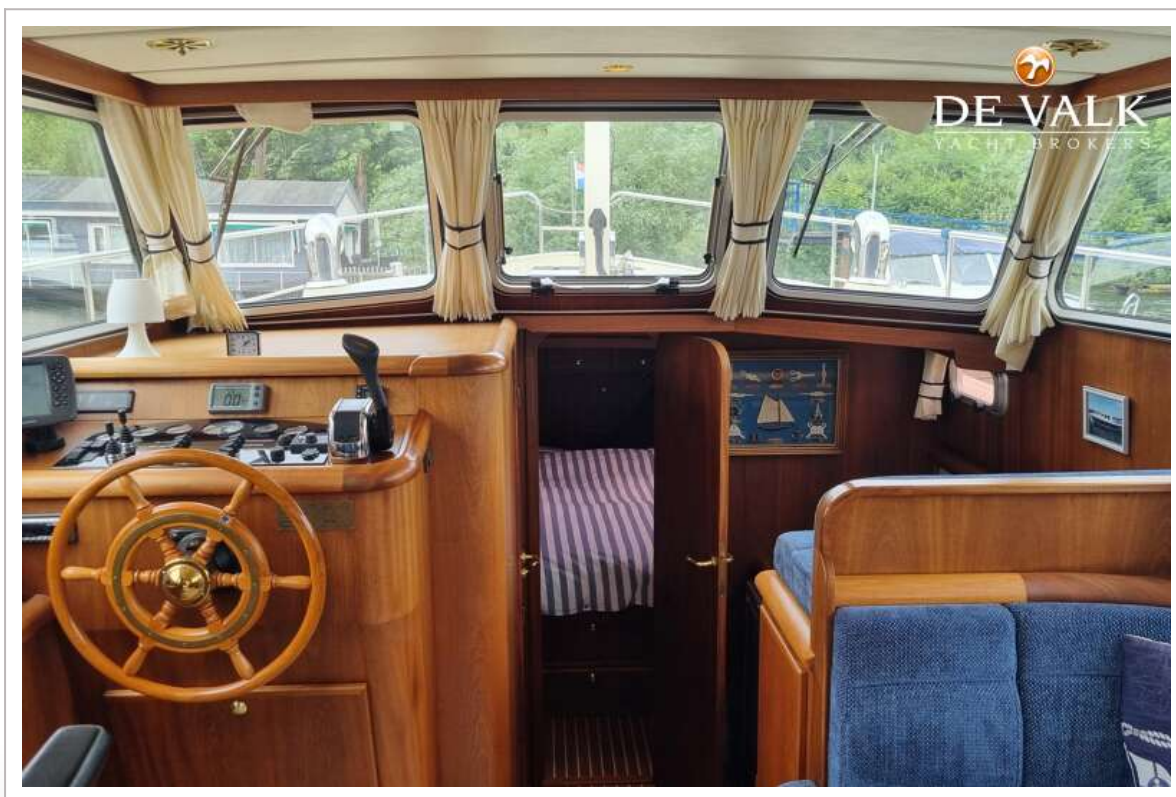


## JETTEN 37 SEDAN CLASSIC



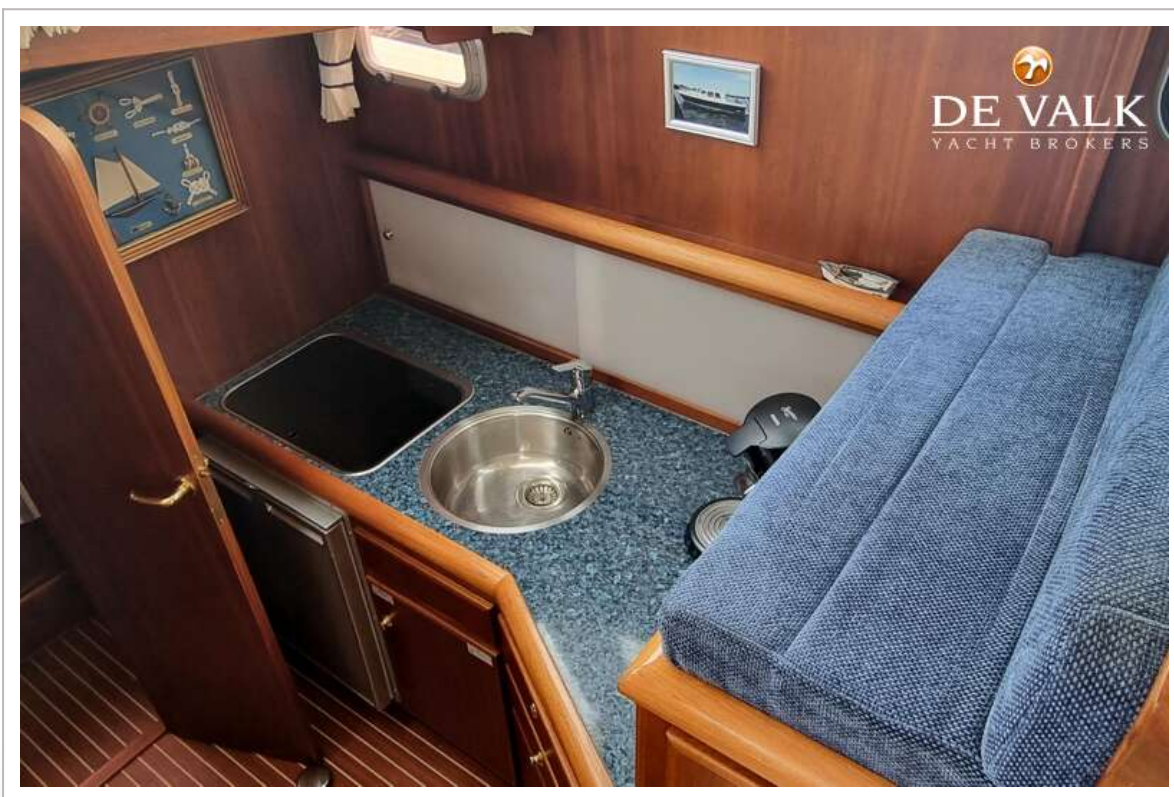


## JETTEN 37 SEDAN CLASSIC





## JETTEN 37 SEDAN CLASSIC





## JETTEN 37 SEDAN CLASSIC



## JETTEN 37 SEDAN CLASSIC

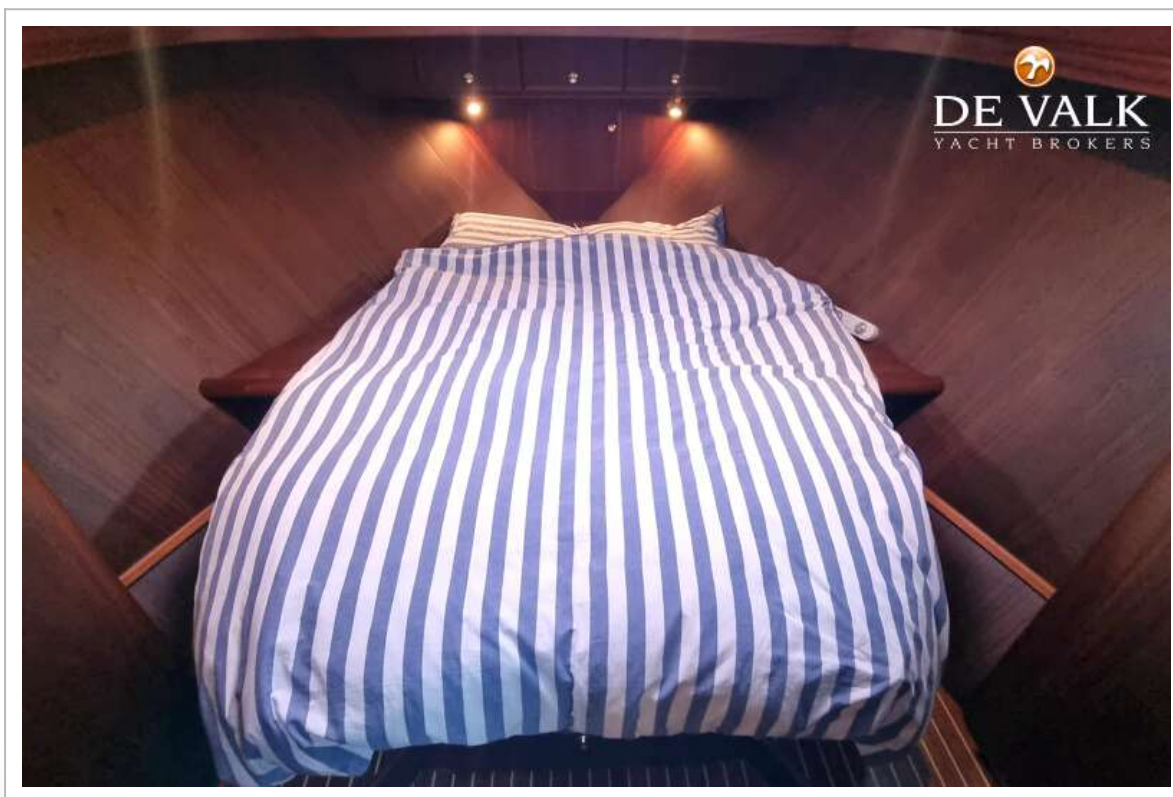




# JETTEN 37 SEDAN CLASSIC

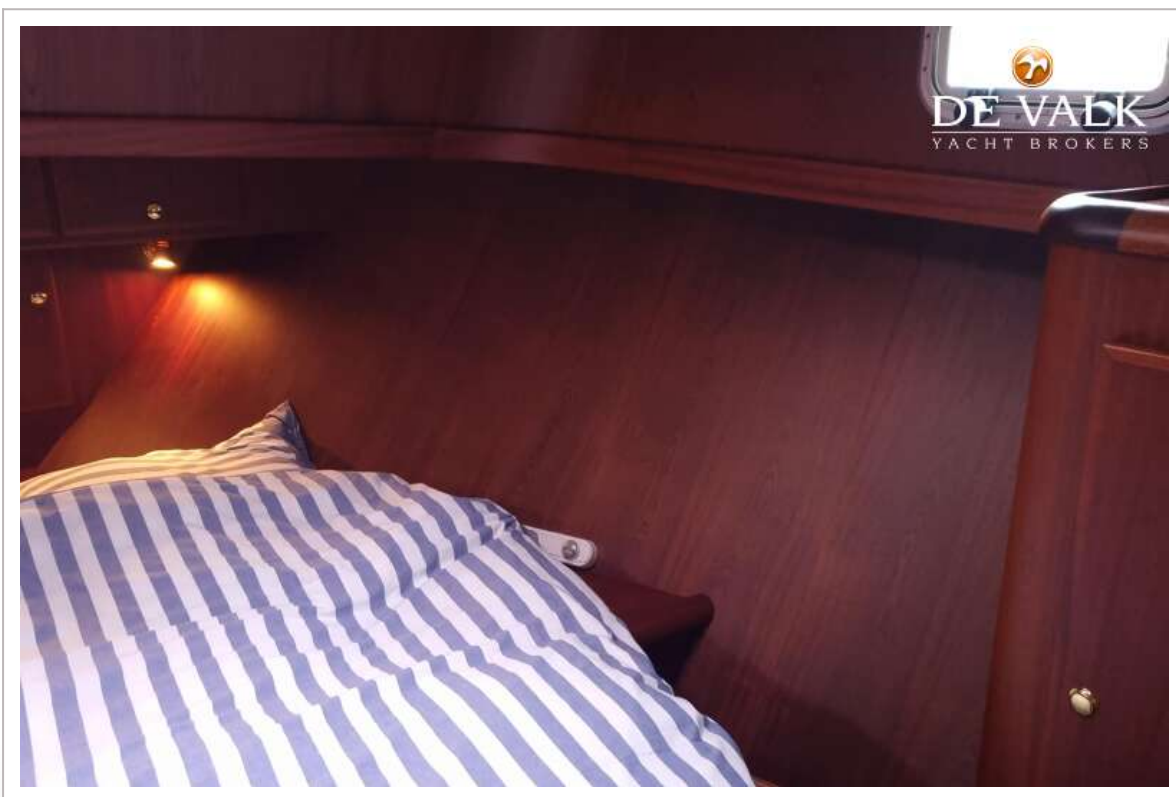


# JETTEN 37 SEDAN CLASSIC





## JETTEN 37 SEDAN CLASSIC



## JETTEN 37 SEDAN CLASSIC

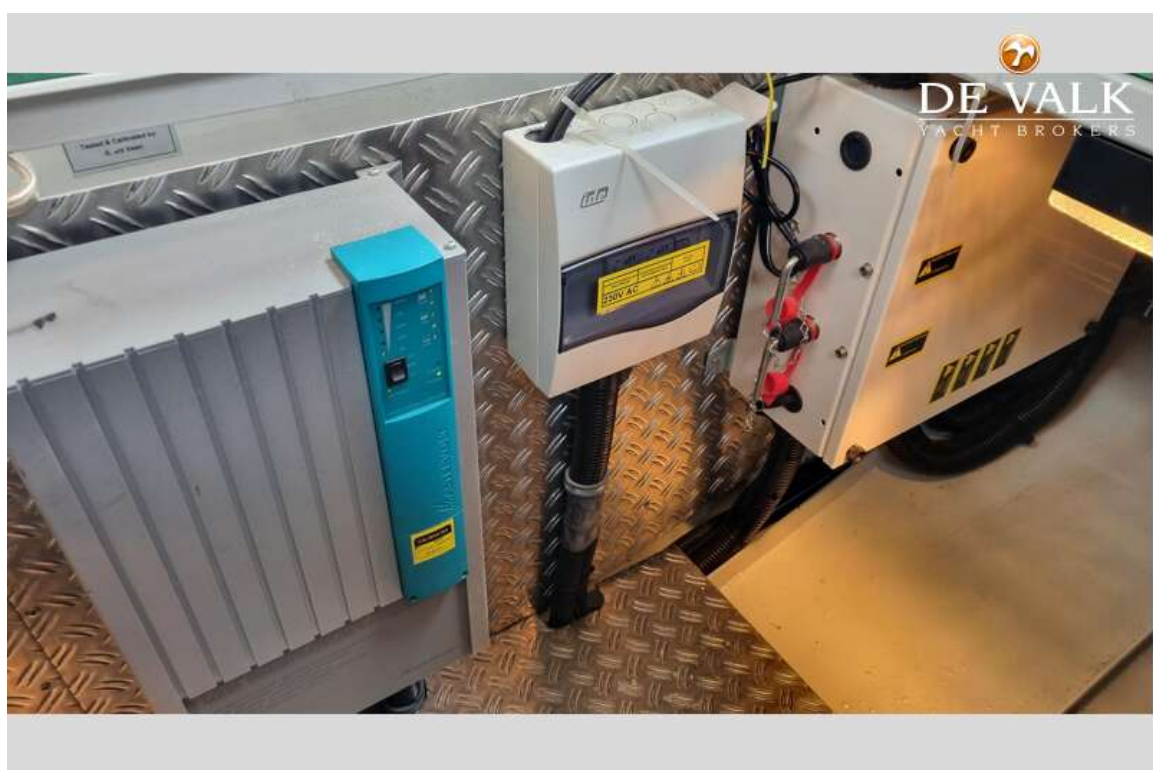
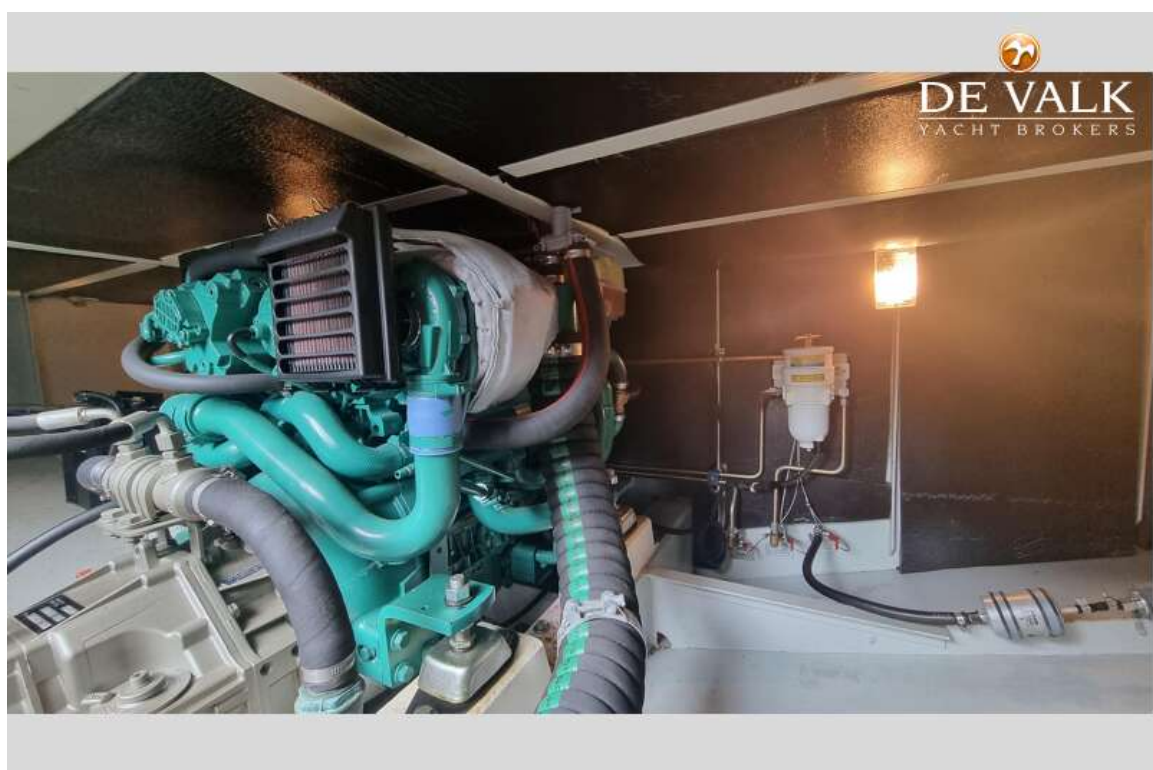


## JETTEN 37 SEDAN CLASSIC

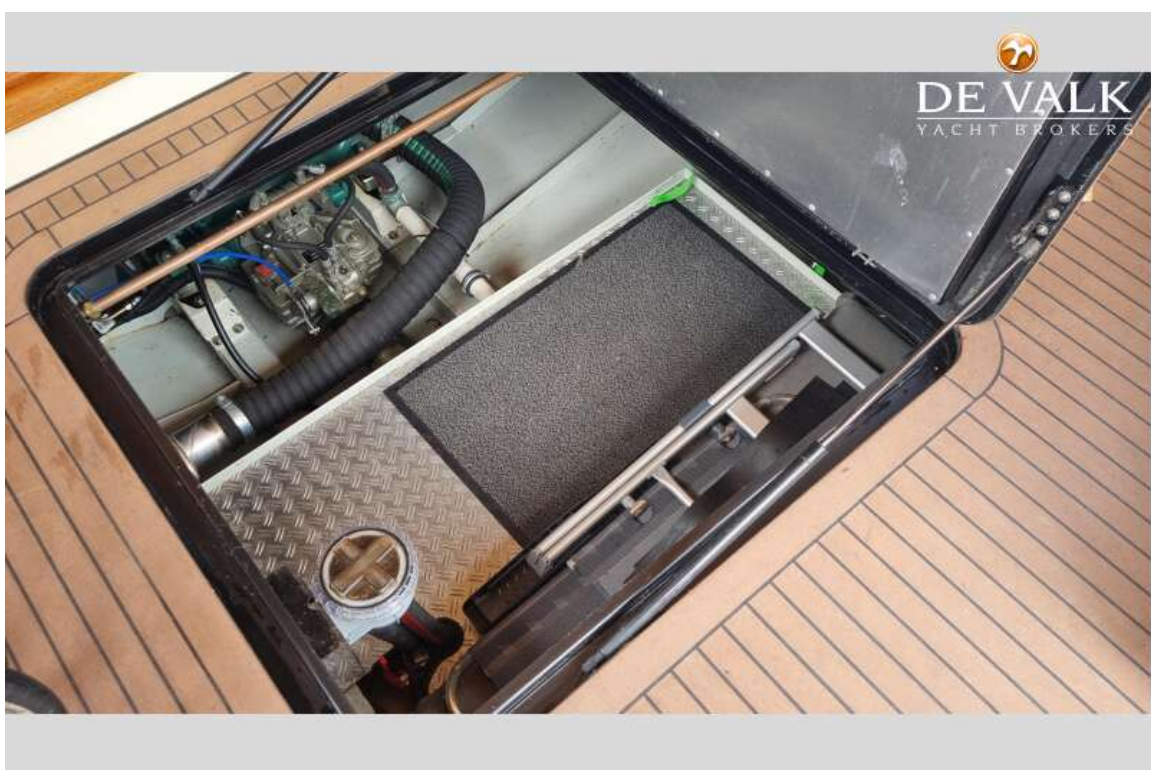




## JETTEN 37 SEDAN CLASSIC



## JETTEN 37 SEDAN CLASSIC





## JETTEN 37 SEDAN CLASSIC

