



DE VALK  
YACHT BROKERS



VAN DEN HOVEN EXECUTIVE 1700



DE VALK  
YACHT BROKERS

# VAN DEN HOVEN EXECUTIVE 1700

## BROKER'S COMMENTS

This luxurious Van den Hoven Executive 1700 is extremely suitable for comfortable longer stays on board or even permanent habitation. She has a very spacious 2 cabin layout, 2 bathrooms and a big saloon. This Van den Hoven is built to the highest standards and is equipped with stabilizers, Kabola central heating with floor heating, proportionel bow and stern thrusters, Airconditioning in the owners cabin, and much more! She is maintained very well and now ready for a new adventure! This Van Den Hoven is located 30 minutes from Rotterdam and can be viewed on appointment.

*Joris van de Rijt*

## SPECIFICATIONS

|                     |                                   |                |                                 |
|---------------------|-----------------------------------|----------------|---------------------------------|
| <b>Dimensions</b>   | 17.32 x 4.87 x 1.55 (m)           | <b>Builder</b> | B. van den Hoven Jachtbouw B.V. |
| <b>Built</b>        | 2013                              | <b>Cabins</b>  | 2                               |
| <b>Material</b>     | Steel                             | <b>Berths</b>  | 4                               |
| <b>Engine(s)</b>    | 2 x Vetus Deutz DTA 66 EMR diesel | <b>Hp/Kw</b>   | 2 x 210.00 (hp), 154.56 (kw)    |
| <b>Asking price</b> | € 660.000 (VAT Paid)              | <b>Lying</b>   | elsewhere / Not at sales office |

## CONTACT

|                     |   |                  |                        |
|---------------------|---|------------------|------------------------|
| <b>Sales office</b> | De Valk Sint Annaland                                     | <b>Telephone</b> | +31 166 601 000        |
| <b>Address</b>      | Koelhuisweg 4<br>4697 RM Sint Annaland<br>The Netherlands | <b>E-mail</b>    | sintannaland@devalk.nl |

## DISCLAIMER

These particulars are given in good faith as supplied but cannot be guaranteed.



## GENERAL

|                                    |                                 |
|------------------------------------|---------------------------------|
| <b>Model</b>                       | VAN DEN HOVEN EXECUTIVE 1700    |
| <b>Type</b>                        | motor yacht                     |
| <b>LOA (m)</b>                     | 17,32                           |
| <b>LWL (m)</b>                     | 14,98                           |
| <b>Beam (m)</b>                    | 4,87                            |
| <b>Draft (m)</b>                   | 1,55                            |
| <b>Air draft min (m)</b>           | 3,45                            |
| <b>Headroom (m)</b>                | 1,90                            |
| <b>Year built</b>                  | 2013                            |
| <b>Builder</b>                     | B. van den Hoven Jachtbouw B.V. |
| <b>Country</b>                     | The Netherlands                 |
| <b>Displacement (t)</b>            | 40                              |
| <b>CE norm</b>                     | A                               |
| <b>Hull material</b>               | steel                           |
| <b>Hull shape</b>                  | hard chine                      |
| <b>Superstructure material</b>     | steel                           |
| <b>Rubbing strake</b>              | stainless steel                 |
| <b>Deck material</b>               | steel                           |
| <b>Deck finish</b>                 | teak                            |
| <b>Superstructure deck finish</b>  | non-skid moulded in             |
| <b>Cockpit deck finish</b>         | teak                            |
| <b>Window frame</b>                | aluminium                       |
| <b>Window material</b>             | double glazing Tinted glass     |
| <b>Deckhatch</b>                   | yes                             |
| <b>Portholes</b>                   | 8 x                             |
| <b>Insulation</b>                  | foam                            |
| <b>Radar arch</b>                  | collapsible                     |
| <b>Mast can be lowered</b>         | hydraulic                       |
| <b>Fuel tank (litre)</b>           | steel 2200                      |
| <b>Level indicator (fuel tank)</b> | yes                             |



|                                     |                        |
|-------------------------------------|------------------------|
| <b>Freshwater tank (litre)</b>      | polyethylene 1500      |
| <b>Level indicator (freshwater)</b> | yes                    |
| <b>Blackwater tank (litre)</b>      | polyethylene 500       |
| <b>Level indicator (blackwater)</b> | Full indicator         |
| <b>Blackwater tank extraction</b>   | deck extraction + pump |
| <b>Wheel steering</b>               | hydraulic              |
| <b>Inside helm position</b>         | yes                    |

## ACCOMMODATION

|                                 |  |
|---------------------------------|--|
| <b>Cabins</b>                   | 2  |
| <b>Berths</b>                   | 4  |
| <b>Interior</b>                 | yes  |
| <b>Floor</b>                    | wood + carpet in both cabins   |
| <b>Aft deck</b>                 | With lounge and teak table (both with a cover)                       |
| <b>Saloon</b>                   | yes  |
| <b>Headroom saloon (m)</b>      | 1,90   |
| <b>Sliding roof</b>             | electric In saloon   |
| <b>Heating</b>                  | central heating Kabola HR-500 with floor heating throughout the ship |
| <b>Air-conditioning</b>         | single cycle airco In owners cabin                                   |
| <b>Aft Cabin</b>                | yes  |
| <b>Dinette</b>                  | yes  |
| <b>Opening door to aft deck</b> | Can be opened completely (2 x 2 swing-away door panels)              |
| <b>Galley</b>                   | yes  |
| <b>Countertop</b>               | corian   |
| <b>Sink</b>                     | stainless steel  |
| <b>Cooker</b>                   | ceramic Etna 4 burner  |
| <b>Extractor</b>                | Retractable in countertop  |
| <b>Microwave/oven combi</b>     | Pelgrim  |
| <b>Fridge</b>                   | Bosch with freezer in galley + fridge drawer in saloon               |
| <b>Freezer</b>                  | Zanussi  |



# VAN DEN HOVEN EXECUTIVE 1700

|                                    |   |
|------------------------------------|---|
| <b>Wine cooler</b>                 | Cavist in saloon                            |
| <b>Hot water system</b>            | on central heating                          |
| <b>Water pressure system</b>       | electrical                                  |
| <b>Dishwasher</b>                  | Bosch                                       |
| <b>Owners cabin</b>                | French bed Aftercabin with headroom 1,90 m  |
| <b>Bed length (m)</b>              | 2,00 x 1,70                                 |
| <b>Wardrobe</b>                    | hanging/drawers/shelves                     |
| <b>Bathroom</b>                    | en suite With headroom 1,90 m               |
| <b>Toilet</b>                      | en suite                                    |
| <b>Toilet system</b>               | electric                                    |
| <b>Wash basin</b>                  | in the bathroom                             |
| <b>Shower</b>                      | en suite Separate shower compartment        |
| <b>Guest cabin 1</b>               | double bed Front cabin with headroom 1,90 m |
| <b>Bed length (m)</b>              | 2,00 x 1,45                                 |
| <b>Wardrobe</b>                    | hanging/drawers/shelves                     |
| <b>Bathroom</b>                    | en suite With headroom 1,90                 |
| <b>Toilet</b>                      | separate In front hallway                   |
| <b>Toilet system</b>               | electric                                    |
| <b>Wash basin</b>                  | in the bathroom                             |
| <b>Shower</b>                      | en suite Separate shower compartment        |
| <b>Washing machine/dryer combi</b> | Bosch Wash + Dry                            |
| <b>Extra info</b>                  | Electric pleated blinds in saloon           |

## MACHINERY

|                       |             |
|-----------------------|-------------|
| <b>No of engines</b>  | 2           |
| <b>Make</b>           | Vetus Deutz |
| <b>Type</b>           | DTA 66 EMR  |
| <b>HP</b>             | 210         |
| <b>kW</b>             | 154.56      |
| <b>Fuel</b>           | diesel      |
| <b>Year installed</b> | 2013        |



|                                 |  |
|---------------------------------|--|
| <b>Cruising speed (kn)</b>      | 6  |
| <b>Engine hours</b>             | 1604   |
| <b>Engine cooling system</b>    | freshwater heat exchanger  |
| <b>Drive</b>                    | shaft  |
| <b>Engine controls</b>          | electrical EMC   |
| <b>Gearbox</b>                  | hydraulic  |
| <b>Bowthruster</b>              | hydraulic Proportional   |
| <b>Sternthruster</b>            | hydraulic Proportional   |
| <b>Thrust bearing</b>           | Aquadrive  |
| <b>Propeller type</b>           | fixed  |
| <b>Propeller blades</b>         | 2 x 4  |
| <b>Propeller shaft material</b> | stainless steel  |
| <b>Electric bilge pump</b>      | 3 x  |
| <b>Bilge alarm</b>              | yes  |
| <b>Electrical installation</b>  | 24V / 230V   |
| <b>Generator</b>                | Mastervolt Whisper 12 Ultra  |
| <b>Running hours generator</b>  | 195  |
| <b>Start battery</b>            | 4 x  |
| <b>Service battery</b>          | 6 x  |
| <b>Generator battery</b>        | 1 x  |
| <b>Battery monitor</b>          | Mastervolt on navigation dashboard   |
| <b>Battery charger</b>          | Mastervolt Chargemaster Plus 24/80   |
| <b>Inverter</b>                 | Mastervolt Mass Sine 24/5000   |
| <b>Shorepower</b>               | with cable + Mastervolt automatic transfer switch for generator/shorepower |
| <b>Insulation transformer</b>   | Mastervolt Mass GI 3.5   |
| <b>Stabilizers</b>              | fin Vetus Hydraulic  |
| <b>Extra info</b>               | Hydronautica remote for engines and bow/stern thrusters                    |
| <b>Extra info</b>               | Dubble switchable fuel filters. Last engine service 2024                   |
| <b>Extra info</b>               | Mastervolt shore power connection on both bow and stern                    |

## NAVIGATION



|                        |                                 |
|------------------------|---------------------------------|
| Depth sounder          | Raymarine                       |
| VHF                    | Raymarine                       |
| Autopilot              | Raymarine with a remote control |
| Rudder angle indicator | Via autopilot                   |
| Radar                  | Raymarine                       |
| Radar/GPS/plotter      | 2 x Raymarine                   |
| Electronic chart(s)    | yes                             |
| AIS transponder        | Em-trak A100                    |
| Navigation lights      | LED                             |
| Searchlight            | yes                             |

## EQUIPMENT

|                            |   |
|----------------------------|---|
| Bimini                     | Black   |
| Cockpit cushions           | Brown cushions on sofa on aft with a cover      |
| Cockpit table              | Teak  |
| Bathing platform           | With 2 x stainless steel railing                |
| Boarding ladder            | stainless steel                                 |
| Transom door               | 2 x   |
| Deck shower                | On bathing platform                             |
| Anchor                     | Pool Stainless steel                            |
| Anchor chain               | yes   |
| Windlass                   | hydraulic Vetus                                 |
| Capstan                    | On Windlass                                     |
| Deck wash                  | On aft deck                                     |
| Sea railing                | stainless steel                                 |
| Railing side opening gates | 2 x   |
| Wiper                      | Exalto 3 x double                               |
| Horn                       | electric  |
| Fenders                    | yes   |
| Mooring lines              | yes   |
| TV                         | 1 x in saloon + 1 x retractable in owners cabin |



|                                 |   |
|---------------------------------|---|
| <b>Radio</b>                    | Fusion MS-RA70N   |
| <b>Speakers in salon</b>        | yes   |
| <b>Fire extinguisher</b>        | yes   |
| <b>Auto extinguisher system</b> | In engine room  |
| <b>Extra info</b>               | Stainless steel ladder to use on port or starboard side |





# VAN DEN HOVEN EXECUTIVE 1700



# VAN DEN HOVEN EXECUTIVE 1700



# VAN DEN HOVEN EXECUTIVE 1700



# VAN DEN HOVEN EXECUTIVE 1700



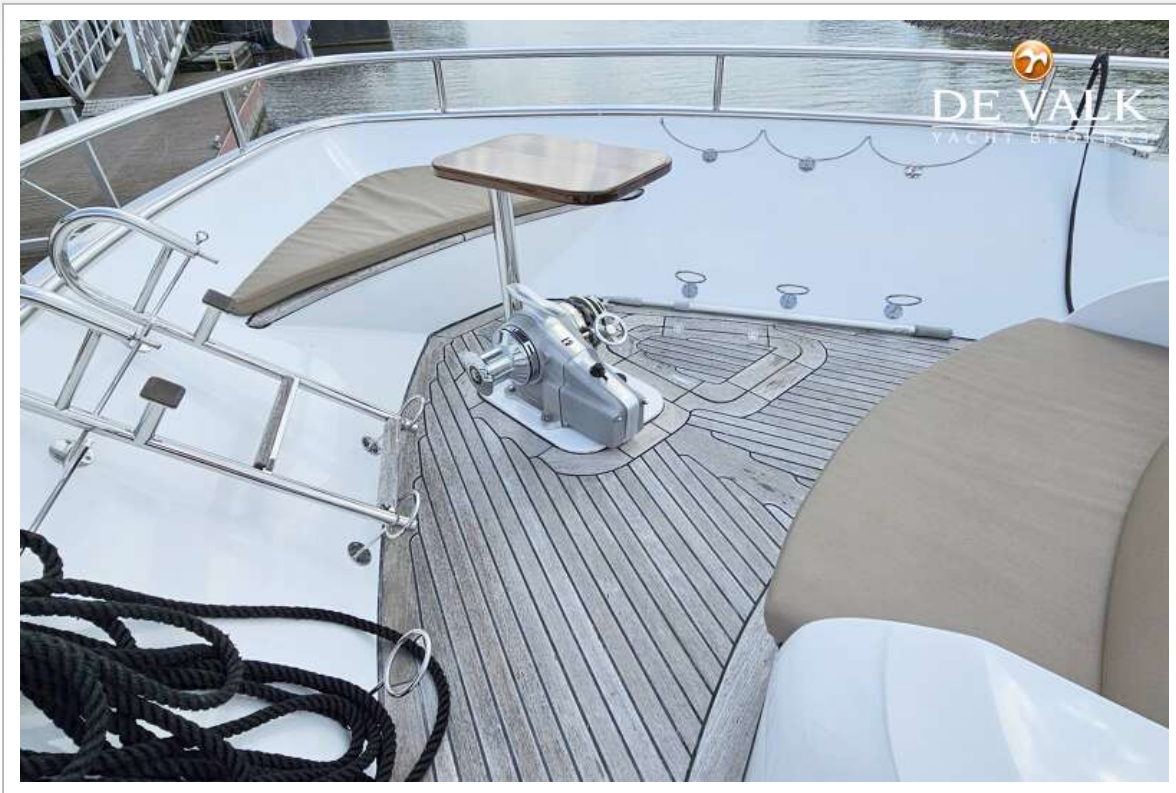
# VAN DEN HOVEN EXECUTIVE 1700



# VAN DEN HOVEN EXECUTIVE 1700



# VAN DEN HOVEN EXECUTIVE 1700

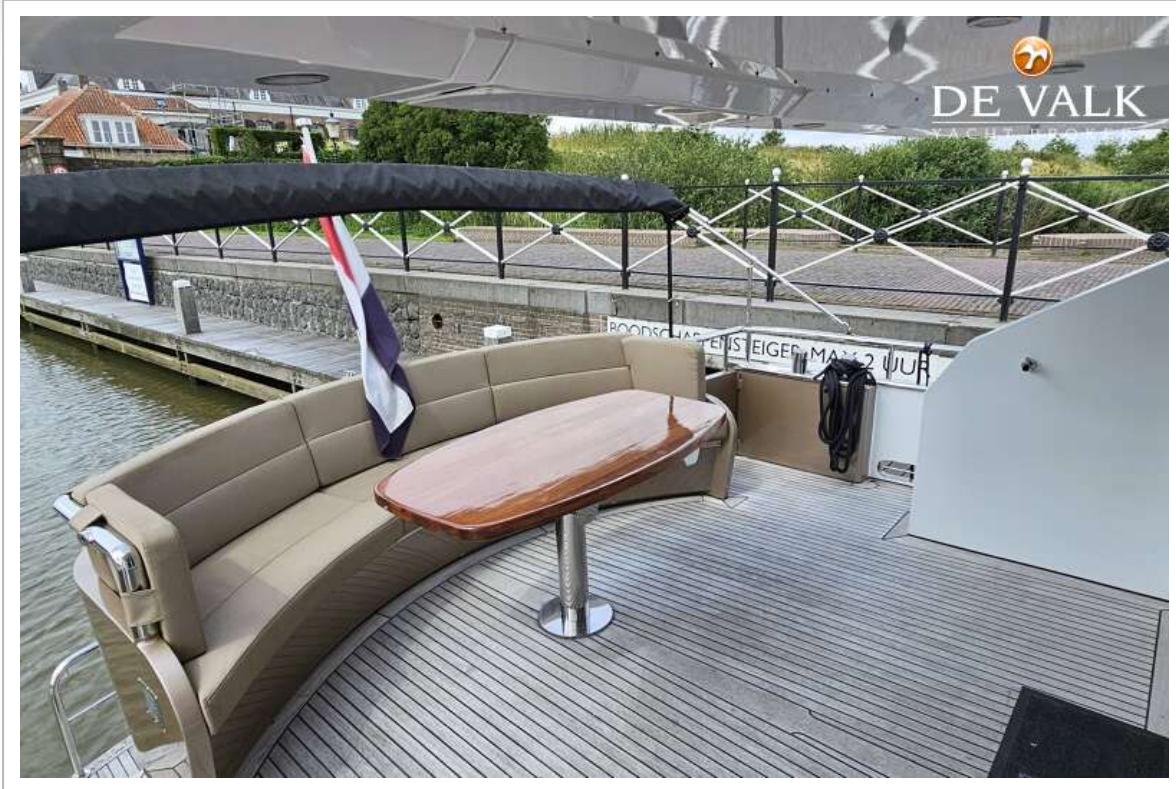


# VAN DEN HOVEN EXECUTIVE 1700

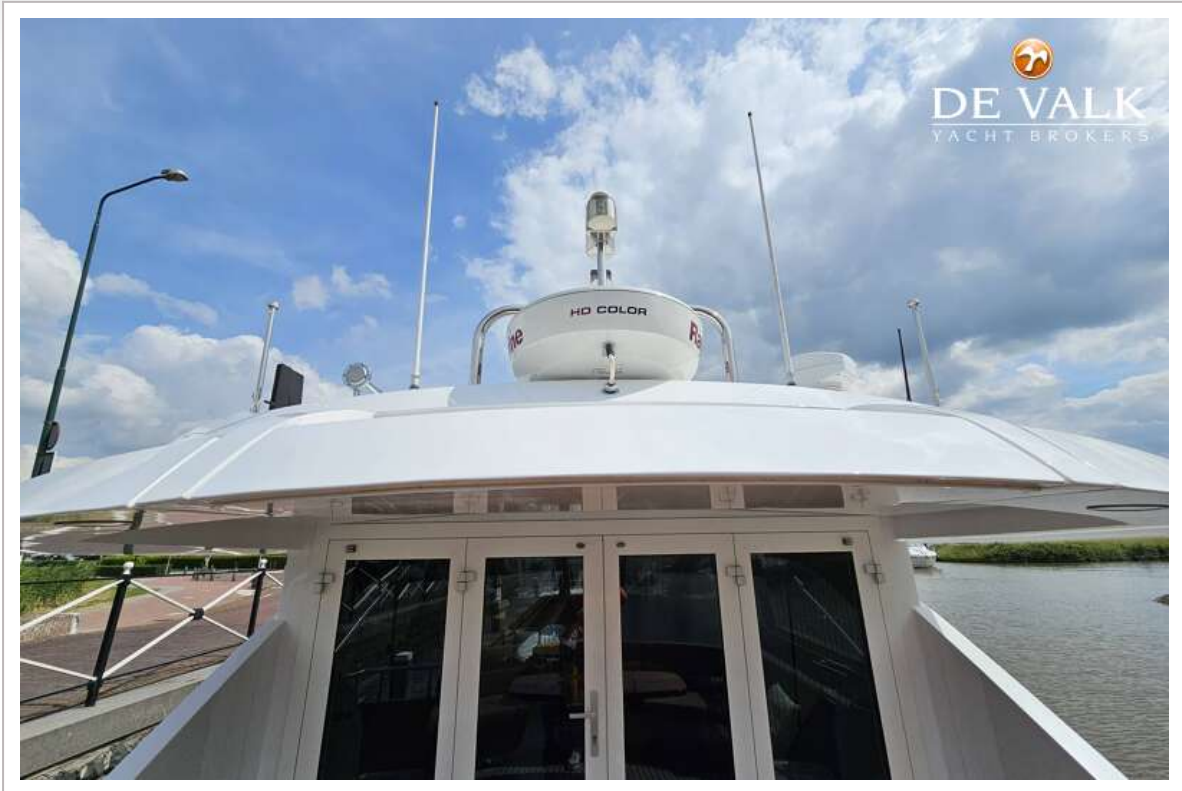




# VAN DEN HOVEN EXECUTIVE 1700



# VAN DEN HOVEN EXECUTIVE 1700



# VAN DEN HOVEN EXECUTIVE 1700



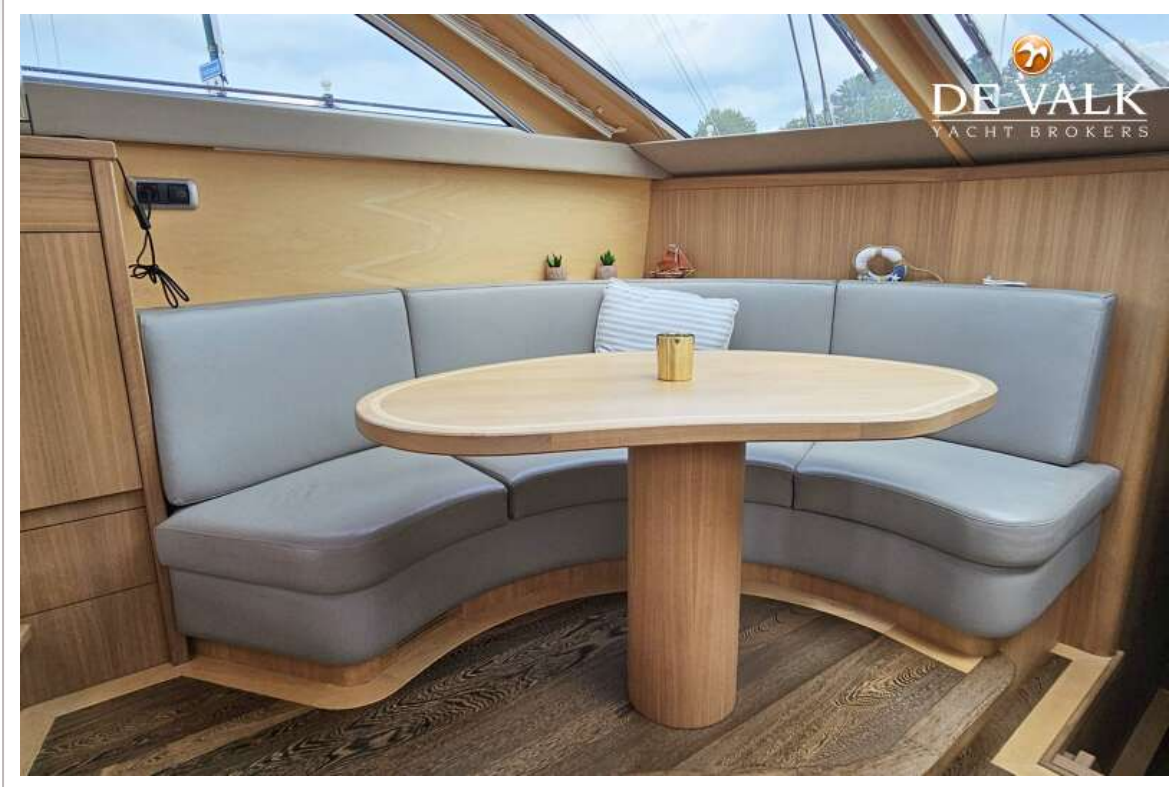
# VAN DEN HOVEN EXECUTIVE 1700



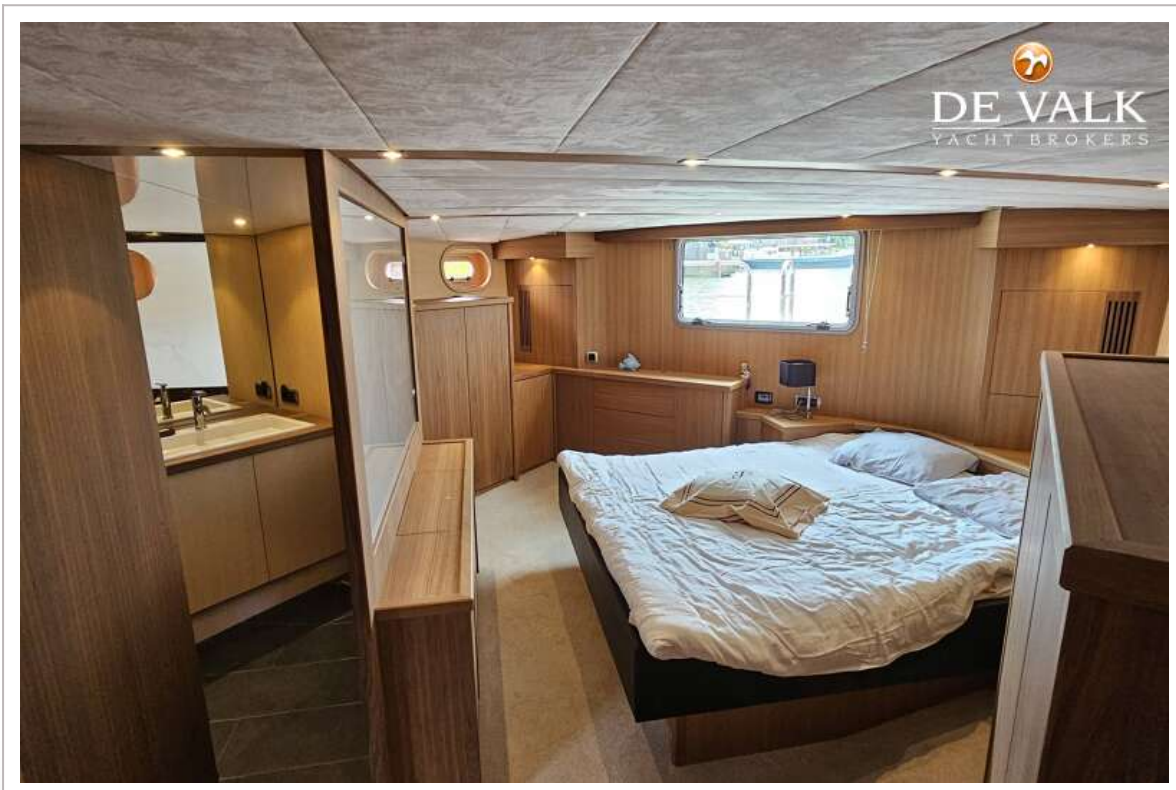
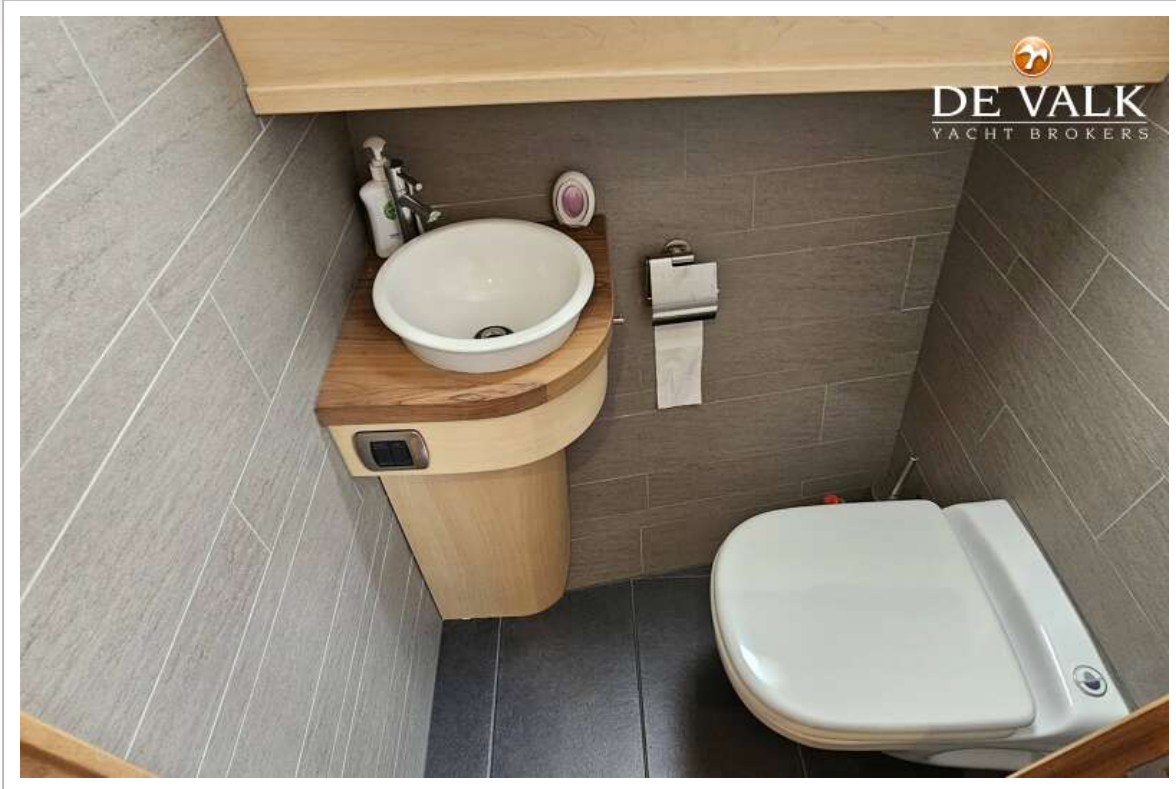
# VAN DEN HOVEN EXECUTIVE 1700



# VAN DEN HOVEN EXECUTIVE 1700









# VAN DEN HOVEN EXECUTIVE 1700

