



## NEPTUNUS 108 EXPRESS



**DE VALK**  
YACHT BROKERS

# NEPTUNUS 108 EXPRESS

## BROKER'S COMMENTS

Complete example of a Neptunus 108 Express. This is a yacht that is very easy to handle because of her size, two strong engines and bow thruster and also very spacious inside for longer stays on board. She has enough engine power to go on open, tidal waters and with a minimal air draft of 3,20 also France proof. This Neptunus 108 Express is to be viewed by appointment in Belgium.

*Jochem Heijermans*

## SPECIFICATIONS

<b>Dimensions</b>	11.70 x 3.90 x 3,20 / 1.10 (m)	<b>Builder</b>	Jachtwerf Neptunus B.V.
<b>Built</b>	1997	<b>Cabins</b>	2
<b>Material</b>	GRP	<b>Berths</b>	6
<b>Engine(s)</b>	2 x Volvo Penta TAMD 41P diesel	<b>Hp/Kw</b>	2 x 200.00 (hp), 147.20 (kw)
<b>Asking price</b>	sold (VAT )	<b>Lying</b>	elsewhere / Not at sales office

## CONTACT

<b>Sales office</b>	De Valk Belgium	<b>Telephone</b>	+3258680218
<b>Address</b>	1401 PT Nieuwpoort Belgium	<b>E-mail</b>	belgium@devalk.nl

## DISCLAIMER

These particulars are given in good faith as supplied but cannot be guaranteed.



# NEPTUNUS 108 EXPRESS

## GENERAL

<b>Model</b>	NEPTUNUS 108 EXPRESS
<b>Type</b>	motor yacht
<b>LOA (m)</b>	11,70
<b>Beam (m)</b>	3,90
<b>Draft (m)</b>	1,10
<b>Draft min (m)</b>	3,20
<b>Air draft (m)</b>	4,50
<b>Headroom (m)</b>	1,95
<b>Year built</b>	1997
<b>Builder</b>	Jachtwerf Neptunus B.V.
<b>Country</b>	The Netherlands
<b>Displacement (t)</b>	8,5
<b>Hull material</b>	GRP
<b>Hull colour</b>	white
<b>Hull shape</b>	deep-V Semi-displacement
<b>Superstructure material</b>	GRP
<b>Rubbing strake</b>	plastic Black
<b>Deck material</b>	GRP
<b>Deck finish</b>	non-skid moulded in
<b>Superstructure deck finish</b>	non-skid moulded in
<b>Cockpit deck finish</b>	non-skid moulded in
<b>Window frame</b>	aluminium
<b>Window material</b>	tempered glass
<b>Deckhatch</b>	yes
<b>Portholes</b>	aluminium
<b>Radar arch</b>	collapsible
<b>Mast can be lowered</b>	manual With gasspring (headroom under arch 1,97)
<b>Fuel tank (litre)</b>	steel 850
<b>Level indicator (fuel tank)</b>	yes
<b>Freshwater tank (litre)</b>	polyethylene 400



# NEPTUNUS 108 EXPRESS

Level indicator (freshwater)	yes
Blackwater tank (litre)	polyethylene
Blackwater tank extraction	pump
Wheel steering	hydraulic

## ACCOMMODATION

Cabins	2
Berths	6
Interior	cherry
Floor	carpet
Aft deck	yes
Saloon	yes
Headroom saloon (m)	1,95
Heating	diesel ducted hot air Eberspächer
Aft Cabin	yes
Opening door to aft deck	yes
Galley	yes
Countertop	plastic
Sink	stainless steel
Cooker	calor gas 3 burner
Microwave	yes
Fridge	yes
Hot water system	220V + engine
Water pressure system	electrical
Owners cabin	French bed Aft cabin - head room : 2,02 m
Bed length (m)	2,00 x 1,40
Wardrobe	hanging and shelves
Bathroom	en suite Headroom : 1,82 m
Toilet	en suite
Toilet system	electric
Wash basin	in the bathroom



# NEPTUNUS 108 EXPRESS

Shower	en suite
Guest cabin 1	bunk bed Cabin in front - headroom : 1,81 m
Wardrobe	hanging and shelves
Toilet	en suite
Toilet system	manual

## MACHINERY

No of engines	2
Make	Volvo Penta
Type	TAMD 41P
HP	200
kW	147.20
Fuel	diesel
Maximum speed (kn)	20
Cruising speed (kn)	18
Engine cooling system	freshwater heat exchanger
Drive	shaft
Engine controls	bowden cable
Gearbox	hydraulic
Bowthruster	electric
Exhaust	watercooled
Propeller type	fixed
Shaft lubrication	water
Electric bilge pump	yes
Electrical installation	12V/220V
Batteries	4
Start battery	2x
Service battery	2x
Battery monitor	yes
Battery charger	Mastervolt 12V/50Ah
Inverter	Mastervolt 12V/1200Ah



# NEPTUNUS 108 EXPRESS

Shorepower	with cable
Trimtabs	Bennett

## NAVIGATION

Compass	yes
Depth sounder	Logic
Log	Logic
VHF	yes
Rudder angle indicator	yes
Plotter/GPS	Raymarine RC435i
Navigation lights	yes

## EQUIPMENT

Cockpit cover	10/2014 Winning Sails
Winter cover	yes
Window cover	(10/2014)
Bathing platform	yes
Boarding ladder	stainless steel
Deck shower	yes
Anchor	yes
Windlass	electrical
Capstan	yes
Sea railing	stainless steel
Grab rail (superstructure)	stainless steel
Pushpit	yes
Pulpit	yes
Wiper	yes
Horn	yes
Fenders	yes
Mooring lines	yes
Radio	yes







# NEPTUNUS 108 EXPRESS





# NEPTUNUS 108 EXPRESS

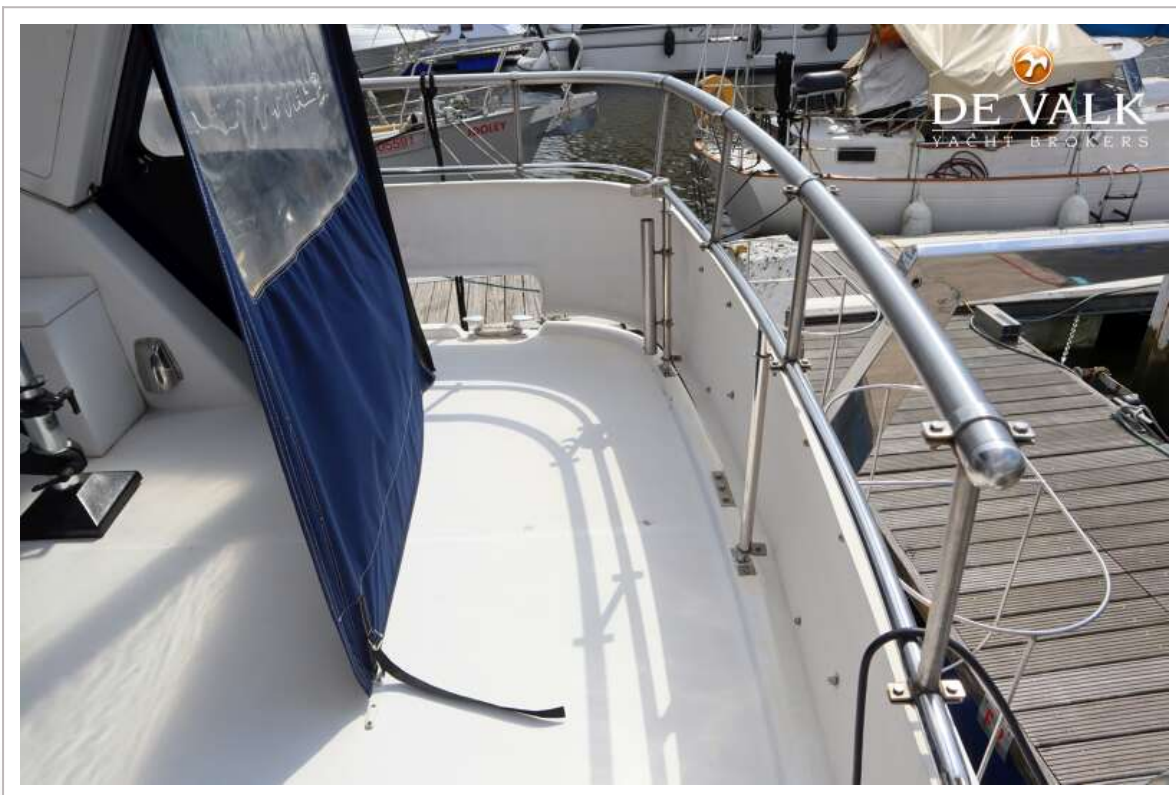


# NEPTUNUS 108 EXPRESS





# NEPTUNUS 108 EXPRESS

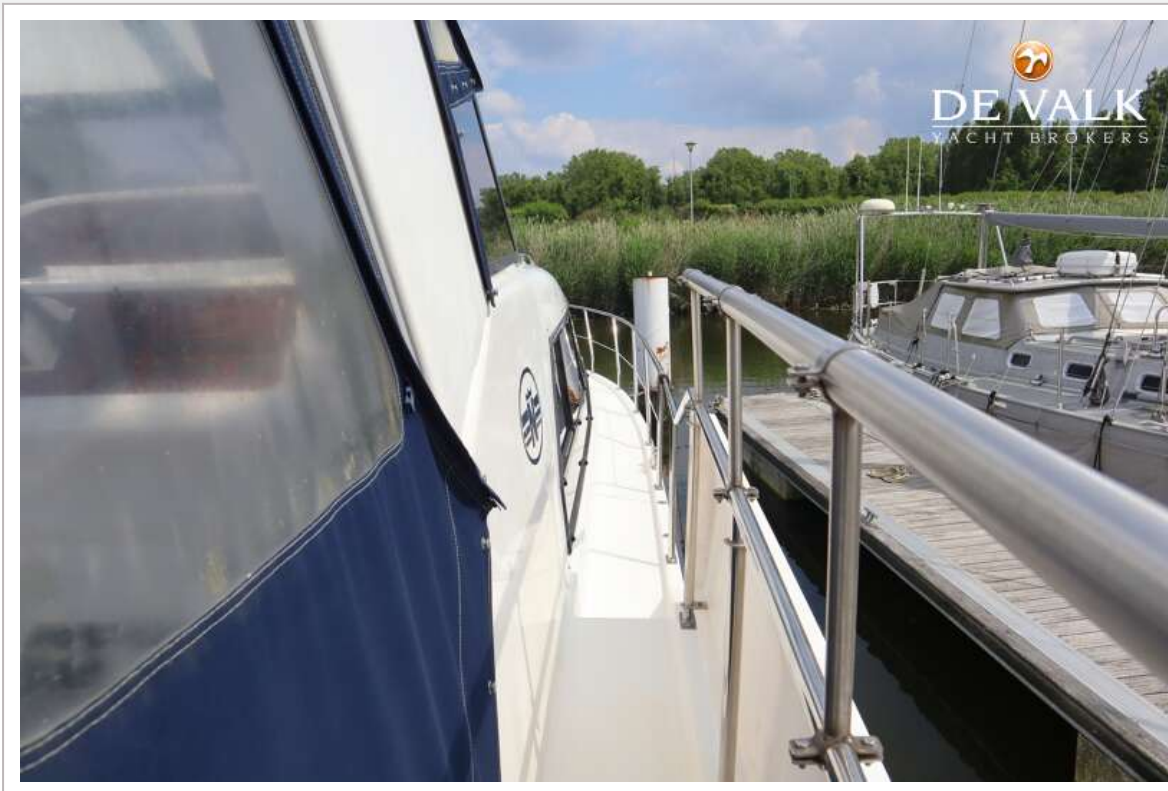


# NEPTUNUS 108 EXPRESS





# NEPTUNUS 108 EXPRESS

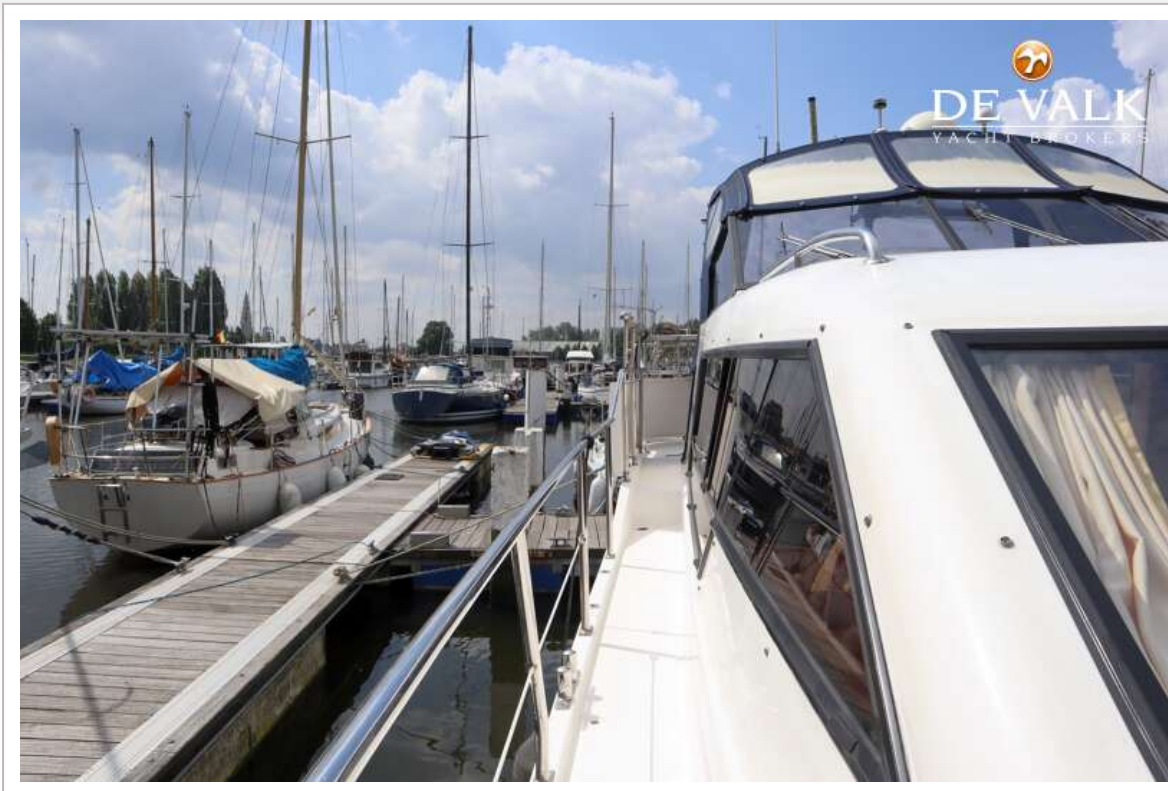


# NEPTUNUS 108 EXPRESS





# NEPTUNUS 108 EXPRESS





# NEPTUNUS 108 EXPRESS

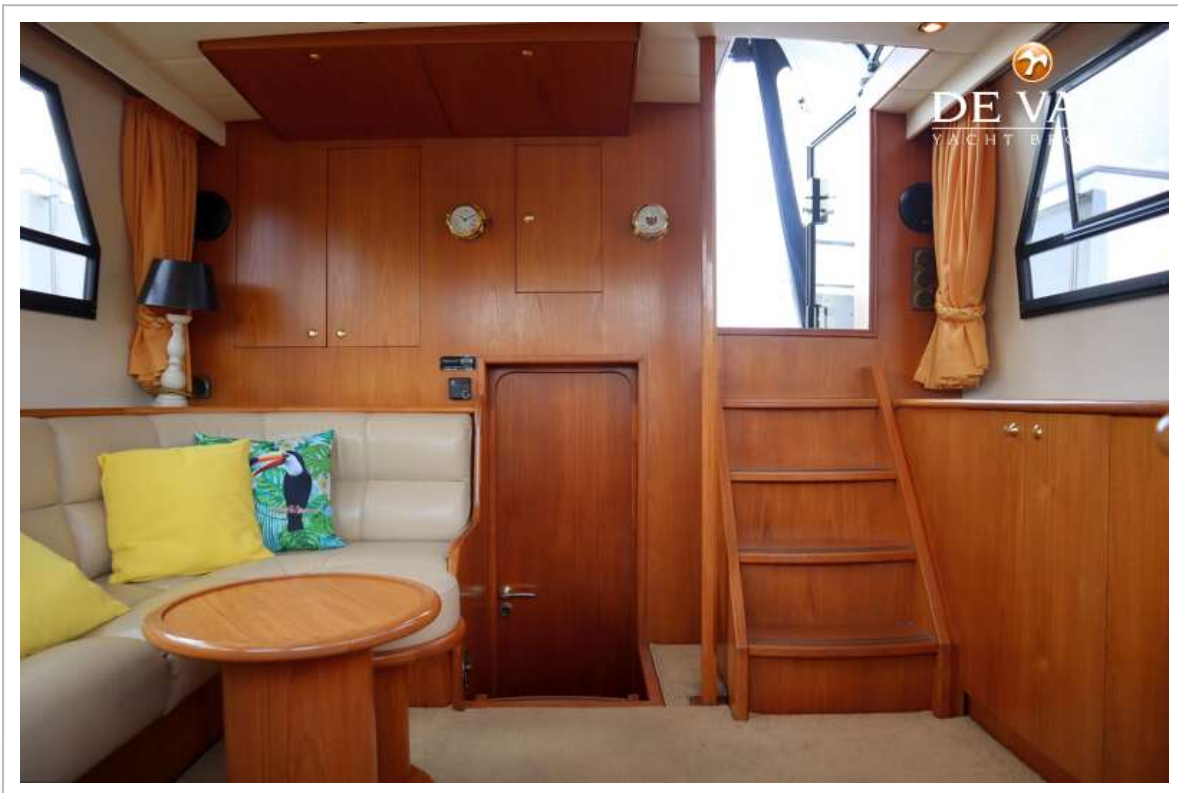


# NEPTUNUS 108 EXPRESS

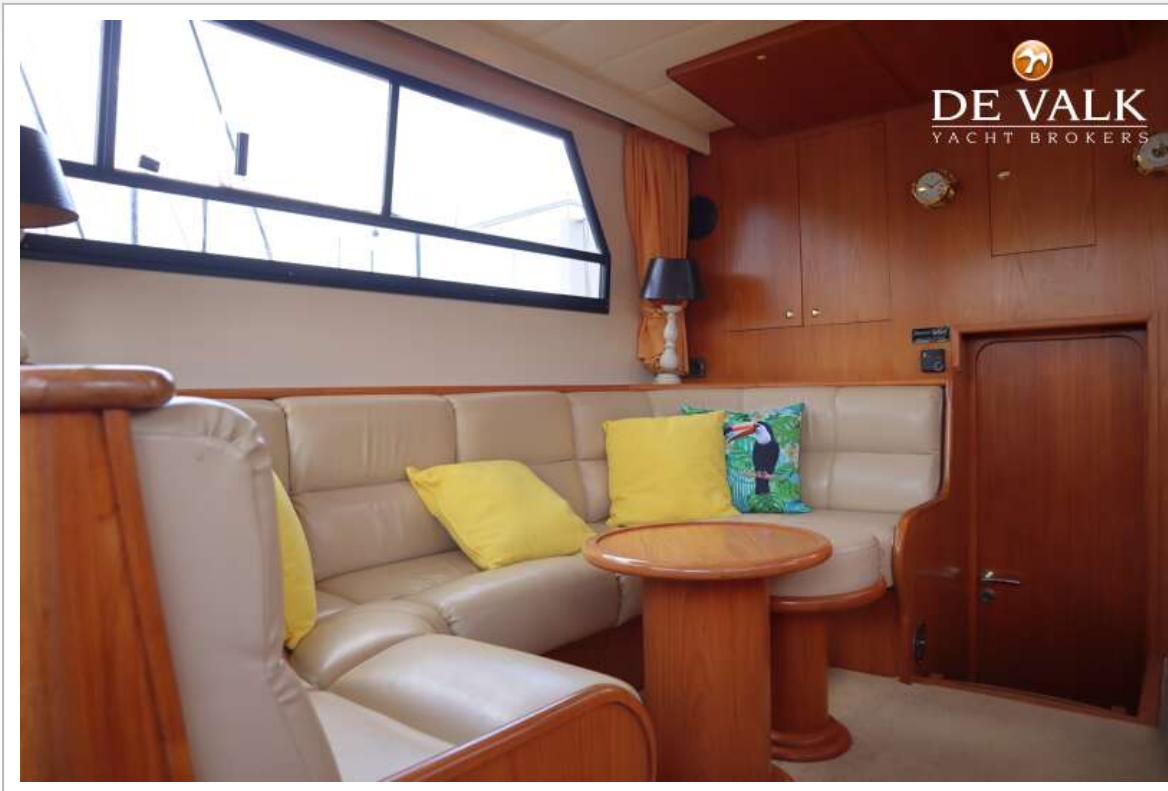




# NEPTUNUS 108 EXPRESS



# NEPTUNUS 108 EXPRESS

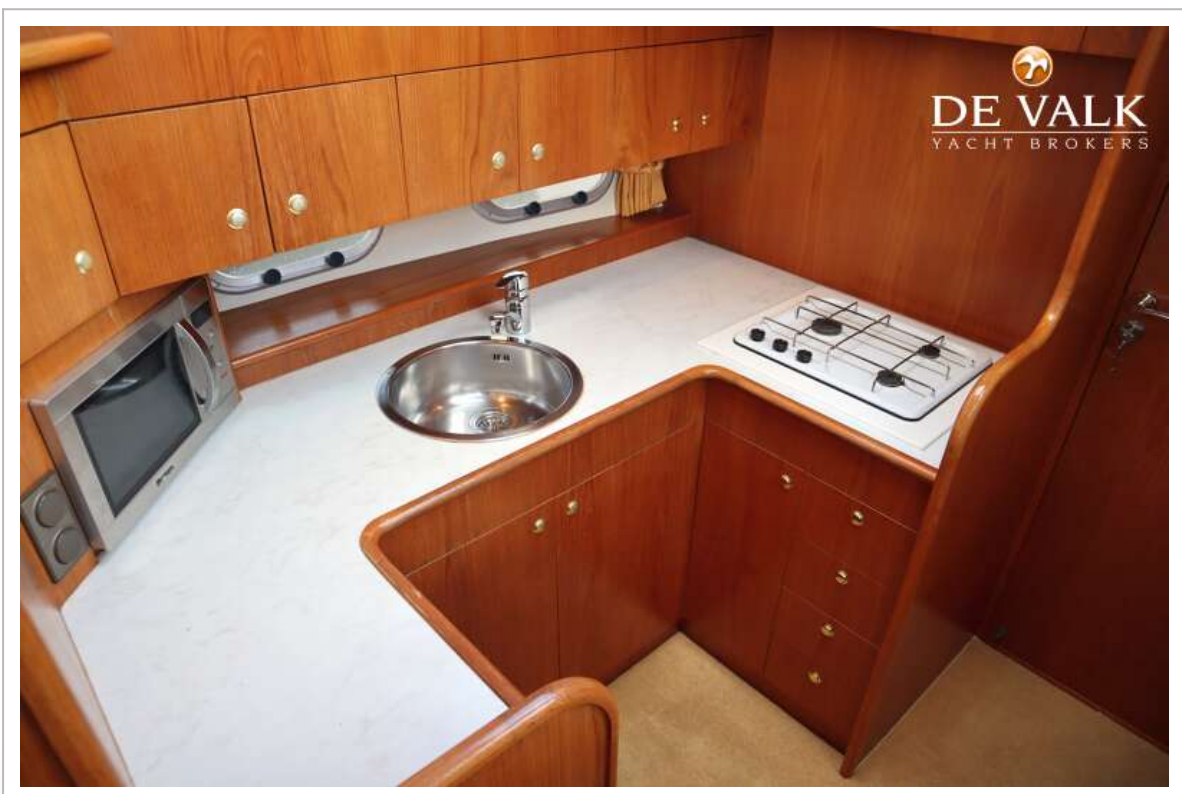
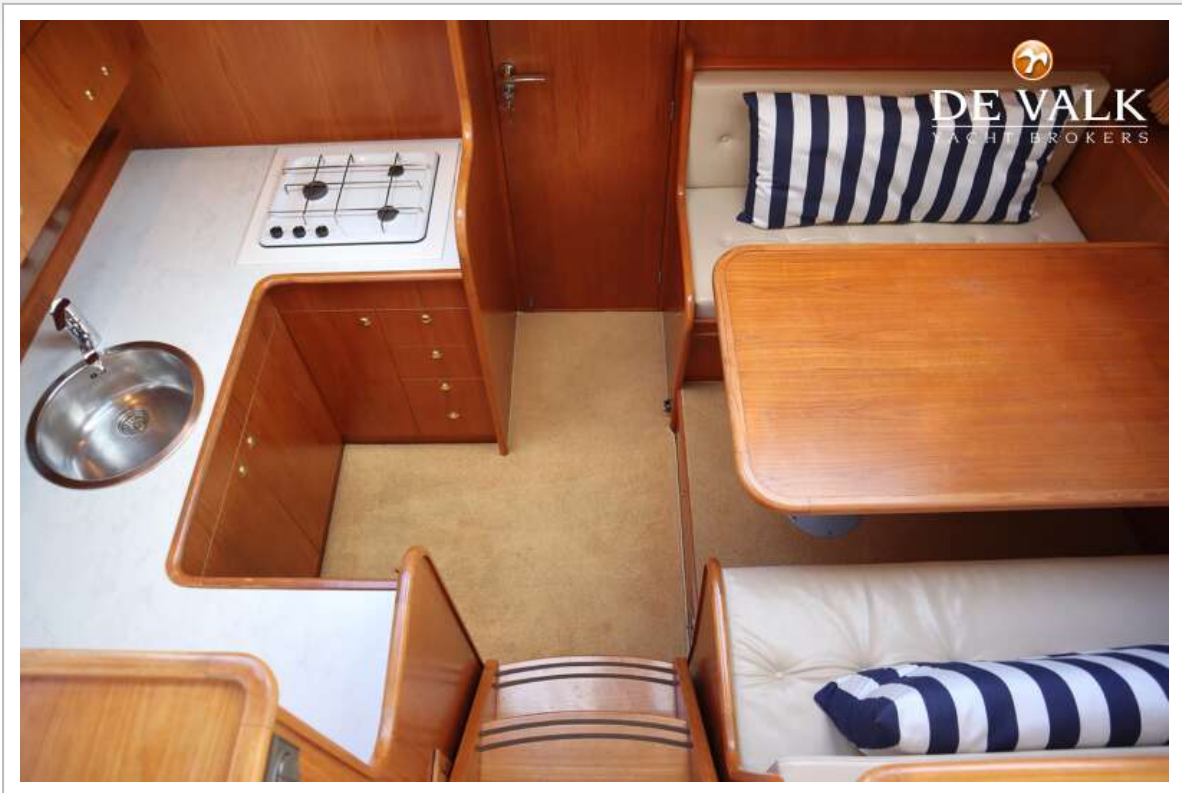


# NEPTUNUS 108 EXPRESS





# NEPTUNUS 108 EXPRESS



# NEPTUNUS 108 EXPRESS

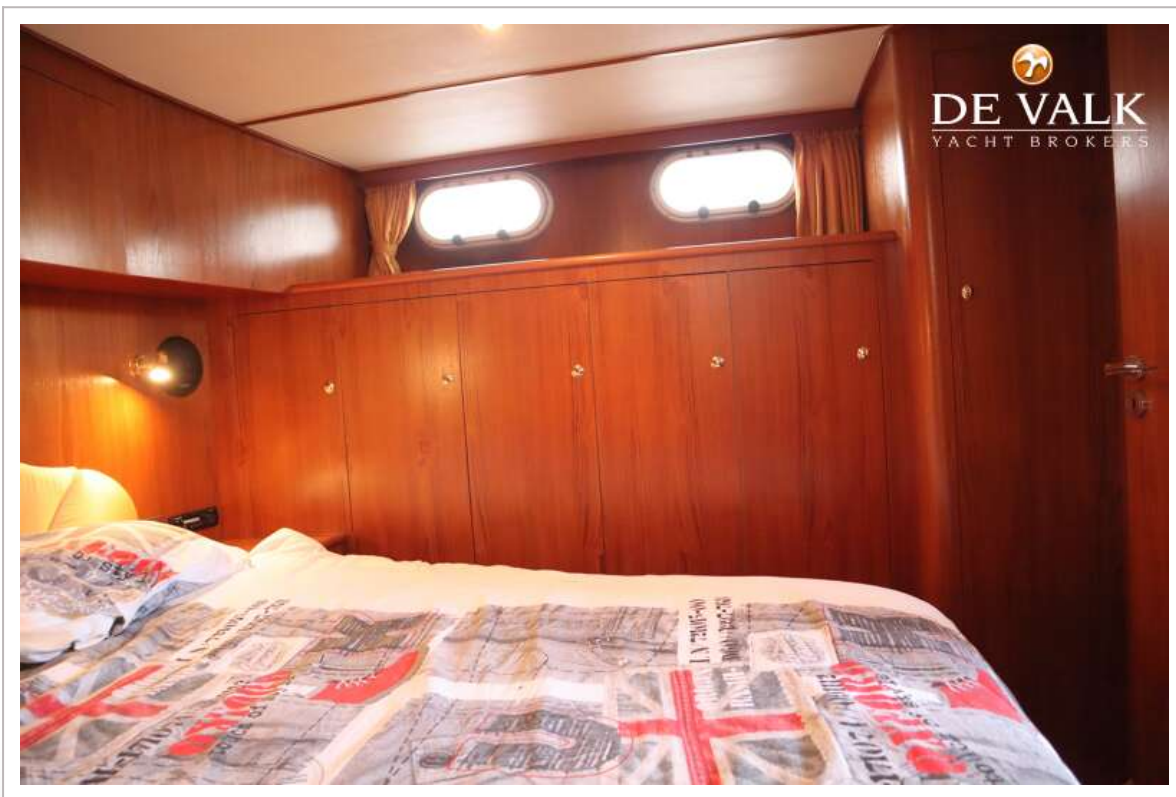




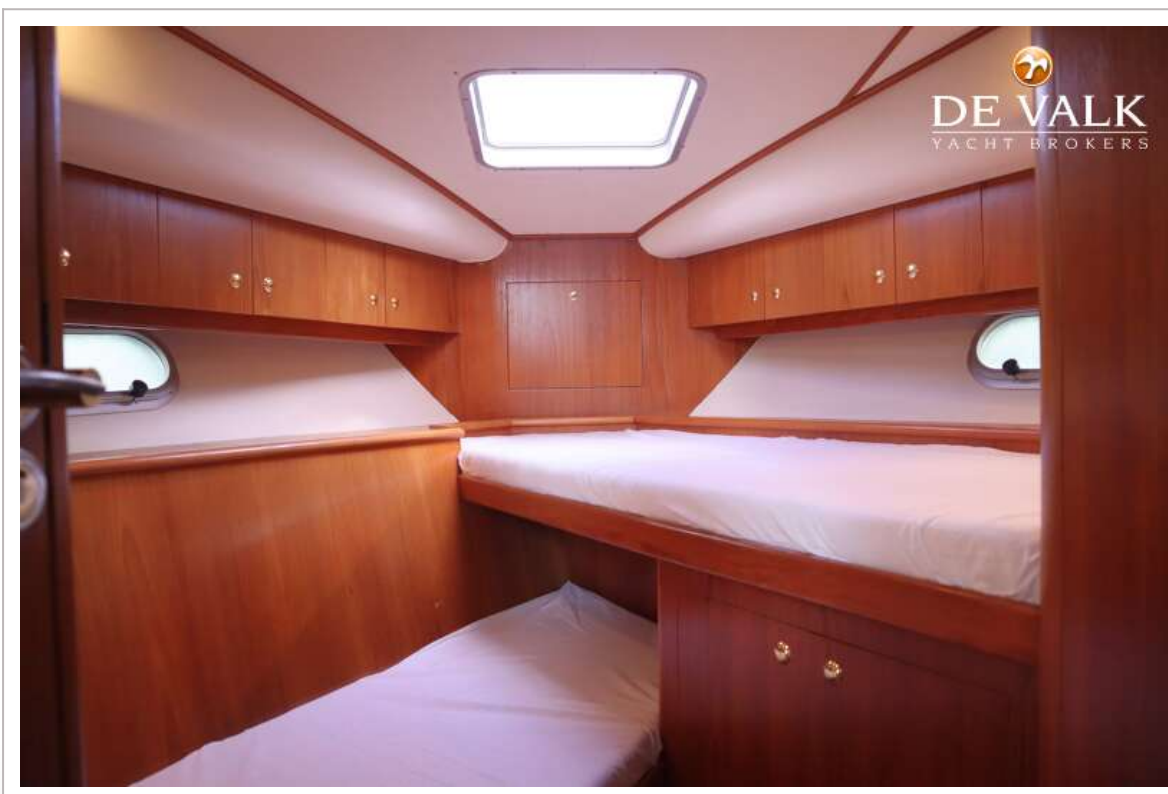
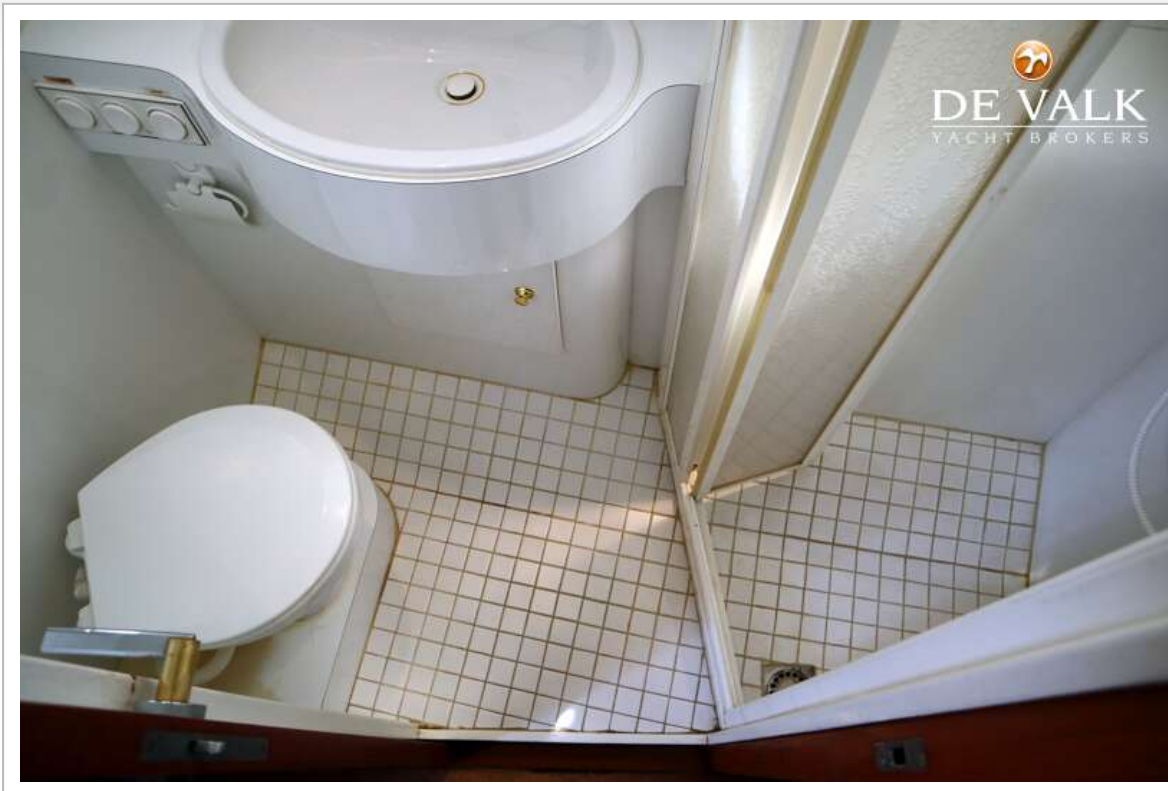
# NEPTUNUS 108 EXPRESS



# NEPTUNUS 108 EXPRESS

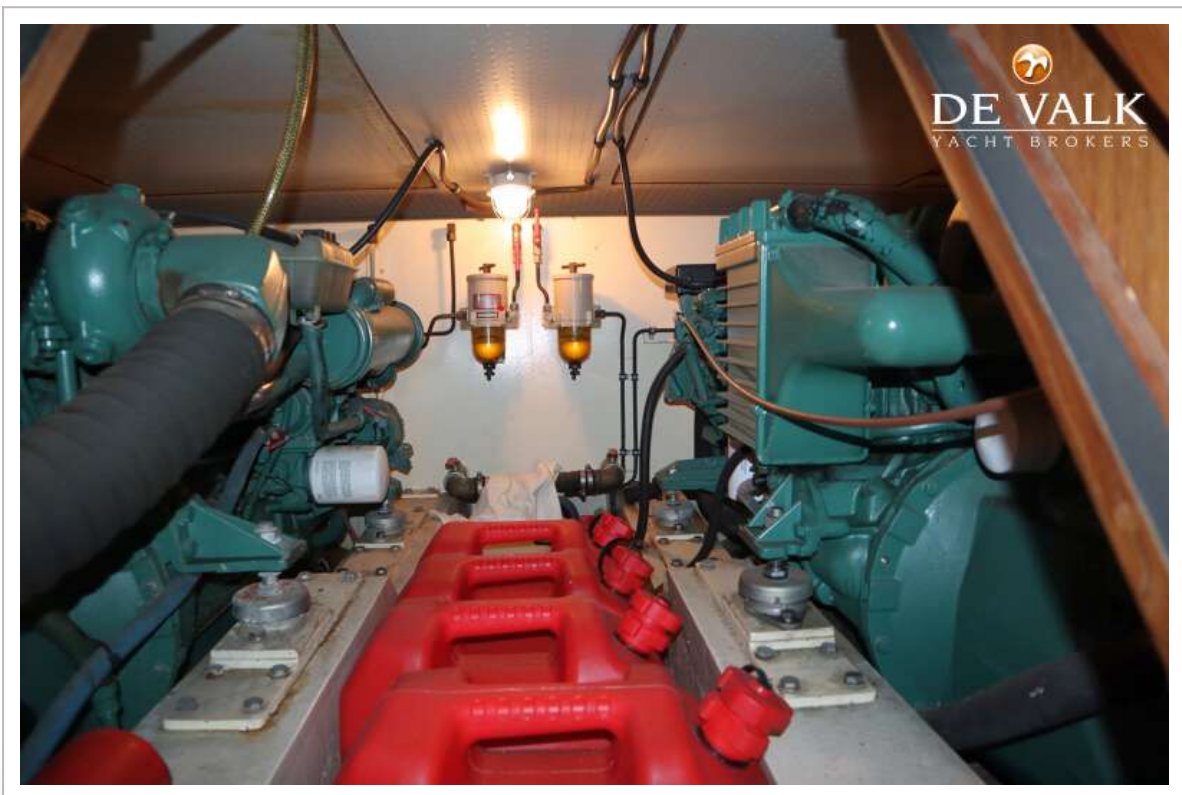
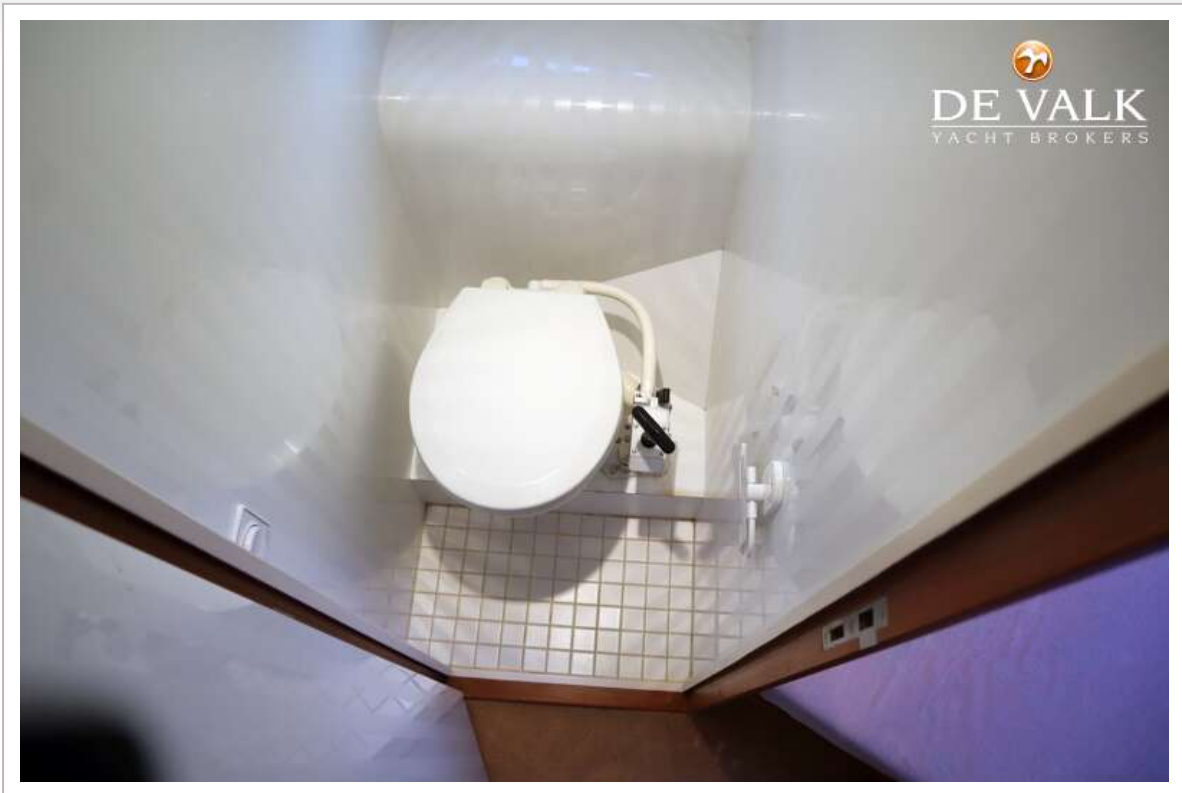


# NEPTUNUS 108 EXPRESS

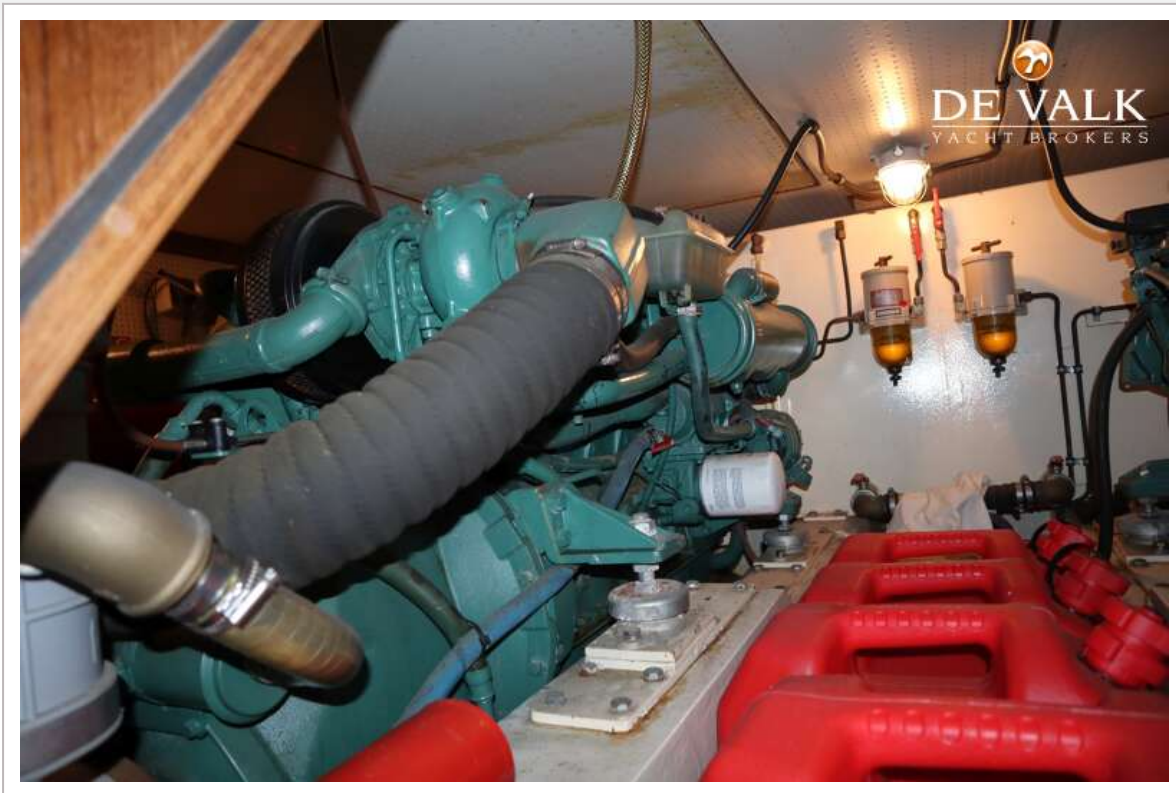




# NEPTUNUS 108 EXPRESS



# NEPTUNUS 108 EXPRESS





# NEPTUNUS 108 EXPRESS

