



DE VALK
YACHT BROKERS



DISCOVERY 58



DE VALK
YACHT BROKERS

BROKERAGE | CHARTER | BERTHS | FINANCE | INSURANCE | YACHT MANAGEMENT

BROKER'S COMMENTS

Discovery Yachts built true blue-water cruisers from Southampton, with a team of naval architects, designers, and skilled craftsmen. A key feature of Discovery yachts is that they can be sailed effortlessly by just two people. Thanks to in-mast furling, electric winches and furlers, and the fact that all control lines are within reach in the cockpit, sailing remains manageable and safe under all conditions. Unique is the panoramic view from the saloon. The raised navigation position makes long passages effortlessly comfortable and safe.

Reinier van der Wolf

SPECIFICATIONS

Dimensions	17.90 x 5.10 x 2.35 (m)	Builder	Discovery Yachts Ltd.
Built	2019	Cabins	3
Material	GRP	Berths	7
Engine(s)	1 x Yanmar RCD2-4LV150 diesel	Hp/Kw	150.00 (hp), 110.40 (kw)
Asking price	€ 1.450.000 (VAT Paid)	Lying	elsewhere / Not at sales office

CONTACT

Sales office	De Valk Monnickendam B.V.	Telephone	+31 (0)299 65 63 50
Address	Hoogedijk 6 1145 PM Katwoude NL	E-mail	monnickendam@devalk.nl

DISCLAIMER

These particulars are given in good faith as supplied but cannot be guaranteed.



GENERAL

Model	DISCOVERY 58
Type	sailing yacht
LOA (m)	17,90
LWL (m)	16,50
Beam (m)	5,10
Draft (m)	2,35
Air draft (m)	26,50
Headroom (m)	1,95
Year built	2019
Launched	2019
Builder	Discovery Yachts Ltd.
Country	United Kingdom
Designer	Ron Holland/Ken Freivokh Design
Displacement (t)	27,25
Ballast (tonnes)	lead
CE norm	A
Hull material	GRP
Hull colour	white
Hull shape	round-bilged
Keel type	fin keel
Superstructure material	GRP
Superstructure (mm)	yes
Rubbing strake	wood
Deck material	GRP
Deck finish	teak
Antifouling (year)	2022 Coppercoat
Window frame	aluminium Lewmar
Window material	tempered glass
Portholes	aluminium
Radar arch	non collapsible



Fuel tank (litre)	polyethylene 635
Fuel tank 2 (litre)	polyethylene 635
Level indicator (fuel tank)	yes
Freshwater tank (litre)	polyethylene 2x 500
Level indicator (freshwater)	yes
Blackwater tank (litre)	polyethylene 2
Blackwater tank extraction	deck extraction + uw line
Greywater tank (litre)	polyethylene 40
Level indicator (greywater)	yes
Wheel steering	rack & pinion
More info on hull	Heavy duty GRP moulding, hand laid up to Discovery's precise laminating schedule incorporating multi-axial and unidirectional reinforcements.
Extra info	the Discovery 58 is a high-performance blue-water cruiser, designed for ultimate comfort, safety, and ease of handling. Each yacht is custom-built in Southampton by top craftsmen, naval architects, and designers. The hull is strong, light, and durable, thanks to advanced laminating techniques, vinylester resin, and Kevlar reinforcement. The keel is optimized for stability and comfort, and the yacht can be sailed effortlessly by just two people.
Extra info	The deck combines style and functionality. High-quality teak (or optional synthetic teak) is laid over a strong GRP deck with foam and balsa core for strength and insulation. The spacious cockpit and central helm stations provide safety, visibility, and comfort. Two helm positions, ergonomic seating, and electric winches make sail handling simple, while a large sprayhood and optional bimini offer protection. Storage is abundant: self-draining anchor locker, sail locker, gas storage, lazarettes, and swim platform. Stainless steel finish is top-quality, from the pulpit to the stern rail and mooring cleats. Safety harnesses and jackstays are strategically fitted.

ACCOMMODATION

Cabins	3
Berths	7



Interior	oak
Floor	woodprint
Deck saloon	yes
Saloon	yes
Headroom saloon (m)	2.00
Heating	diesel ducted hot air
Heating 2	electric 220V
Air-conditioning	reverse cycle airco
Navigation center	yes
Chart table	yes
Aft Cabin	yes
Galley	yes
Countertop	corian
Sink	stainless steel
Cooker	calor gas OceanChef 5 pits Burner
Oven	yes
Extractor	yes
Gas alarm	yes
Microwave/oven combi	yes
Fridge	yes
Freezer	2x
Hot water system	220V + engine
Water pressure system	electrical
Owners cabin	double bed
Bed length (m)	2.00
Wardrobe	hanging and drawers
Bathroom	en suite
Toilet	en suite
Toilet system	electric
Wash basin	in the bathroom
Shower	en suite
Guest cabin 1	double bed



Bed length (m)	2.00
Wardrobe	hanging and shelves
Bathroom	separate
Toilet	separate
Toilet system	electric
Wash basin	in the bathroom
Shower	separate
Guest cabin 2	bunk bed
Bed length (m)	2.00
Wardrobe	hanging and drawers
Bathroom	shared
Toilet	shared
Toilet system	electric
Wash basin	in the bathroom
Shower	shared
Extra info	Tecma electric WCs in forward and aft bathrooms, connected to 80-liter holding tanks, comply with international regulations. A greywater holding tank is available. Cabins drain to deep bilge with two electric pumps and one manual pump operable from the cockpit. Deck wash systems with salt and freshwater outlets simplify maintenance. All through-hull fittings are safe, corrosion-resistant, and double-clamped.
Extra info	The salon provides panoramic views and natural light, with comfortable seating for eight and a flexible dining area. The raised navigation station ensures safe and comfortable watchkeeping. The galley is designed for both offshore and harbor use: Corian countertops, central sinks, gimbaled 5-burner stove with oven and grill, microwave and large fridge (300L) and freezer (170L). Excellent ventilation, lighting, and storage make cooking easy and safe. Behind the galley is a workroom with washer/dryer and access to the engine room.



Extra info

Owner's Stateroom (aft): king-size mattress, ample storage, luxurious finishes, en-suite bathroom with Tecma WC, basin, and shower. Forward Double Cabin: spacious double bed, ventilation, and storage. Forward Pullman Guest Cabin: two single bunks, storage, and ventilation. Forward Bathroom: Tecma WC, basin, shower; shared by forward cabins. All berths feature lee cloths, LED lighting, reading lights, and ventilation through deck hatches and AirOnly vents.

MACHINERY

No of engines	1
Make	Yanmar
Type	RCD2-4LV150
HP	150
kW	110.40
Fuel	diesel
Year installed	2019
Maximum speed (kn)	8
Cruising speed (kn)	7
Consumption (l/hr)	6
Engine cooling system	freshwater heat exchanger
Drive	shaft
Engine controls	electrical
Bowthruster	electric Sidepower S-link
Sternthruster	electric Sidepower S-link
Exhaust	watercooled
Propeller type	folding GoriProp
Propeller blades	3
Propeller shaft material	stainless steel
Shaft lubrication	water
Electric bilge pump	3
Bilge alarm	yes



Electrical installation

24V DC system with heavy-duty lithium batteries (500Ah), separate start batteries for engine and generator, and Mastervolt inverter/charger. AC system (230V) powers sockets throughout. All wiring marine-grade, labeled, and fused. Mast and chainplates are grounded for lightning protection; metalwork electrically bonded.

Generator

silent separator | Onan 7kW

Batteries

Mastervolt | Litium

Start battery

yes

Generator battery

yes

Bowthruster battery

yes

Sternthruster battery

yes

Battery monitor

yes

Battery charger

Mastervolt

Inverter

Mastervolt

Battery charger/inverter

Mastervolt

Shorepower

with cable | 20 m.

Watermaker

yes

Extra info

Powered by a Yanmar 4LV150 4cylinder turbo diesel, the yacht features a smooth reduction gearbox and excellent torque for quiet motoring. Aquadrive coupling, folding three-blade propeller, and flexible mounts minimize vibration and noise. A Onan 7 kW generator provides silent power. Standard 12.3 HP bow thruster and retractable sternthruster simplifies harbor maneuvering. Both SidePower Fuel capacity: 1,300 liters in two HDPE tanks. Freshwater: 1,000 liters in two separate HDPE tanks, with optional rainwater catchment or watermaker. Hot water is supplied via engine heat exchanger, diesel central heating, or electric immersion heater.

NAVIGATION

Depth sounder

B&G

Forw. looking depth sounder

B&G

Log

yes

Windset

B&G



VHF	B&G H90
VHF handheld	2X B&G H90
Autopilot	NAC-3 B&G Mambo drive
Radar	B&G Halo 24
Plotter	2x B&G Zeus3
AIS receiver	yes
AIS transponder	yes
EPIRB	yes
Personal MOB transmitter	yes
Navigation lights	yes

EQUIPMENT

Winter cover	yes
Window cover	yes
Cockpit cushions	Sunbrella Charcoal
Cockpit table	yes
Anchor	Ultramarine 45 kg
Anchor chain	100 m.
Deck wash	fresh and salt
Dinghy	Highfield Classic 2.90
Outboard	15 hp Honda
Outboard support	yes
Davits	stainless steel Cooney Oval
Davits controls	manual
Sea railing	yes
Pushpit	yes
Pulpit	yes
Life raft	container
Life raft (pers)	6
Lifejackets	yes
Cockpit speakers	yes



Speakers in salon

yes

Extra info

Key Features Designed for short-handed sailing: easily handled by two people Panoramic views from salon and cockpit Safe, comfortable, and ergonomic navigation station Exclusive, stiff mast and flexible rig Electric in-mast reefing and simple sail handling Luxury galley with large fridge and freezer Owner and guest cabins with generous sleeping and storage space Top-quality finishes, joinery, and furniture Safety features: jackstays, harness points, bilge and fire safety systems Diesel engine, generator, bow thruster, and folding propeller for comfort and maneuverability Advanced electrical systems, pressurized hot and cold water, and central heating

RIGGING

Rigging

yes

Standing rigging

wire

Brand mast

Seldén

Material mast

aluminium

Spreaders

2

Keel stepped mast

yes

Stoway mast

yes

Genoa

130%

Boomvang

hydraulic

Primary sheet winch

electric | Harken

Secondary sheet winch

electric | Harken

Winchcovers

yes

Gennaker pole

carbon



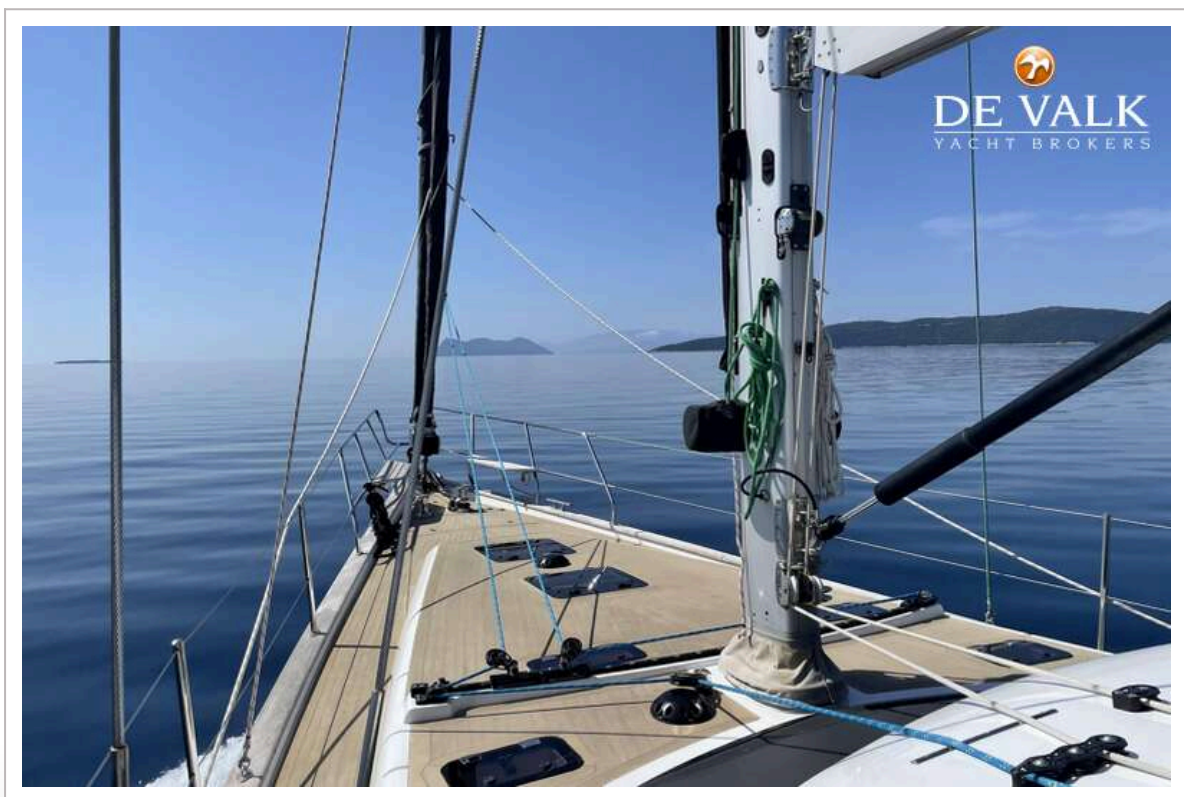
Extra info

The Discovery 58 features an exclusive mast developed with Formula Marine. The oval, keel-stepped mast with double swept-back spreaders keeps decks clear and ensures easy handling. Standard electric in-mast reefing is complemented with manual override. The rig includes a double headsail configuration: self-tacking Solent jib (~90%) and roller reefing genoa. Perfect for any wind condition, with options for double headsails downwind. Mast is fitted with all necessary electrics and navigation equipment, including VHF antenna, navigation lights, radar, and wind instruments. An electrically powered traveller allows easy sail trimming from both the cockpit and helm stations.





DISCOVERY 58



DISCOVERY 58



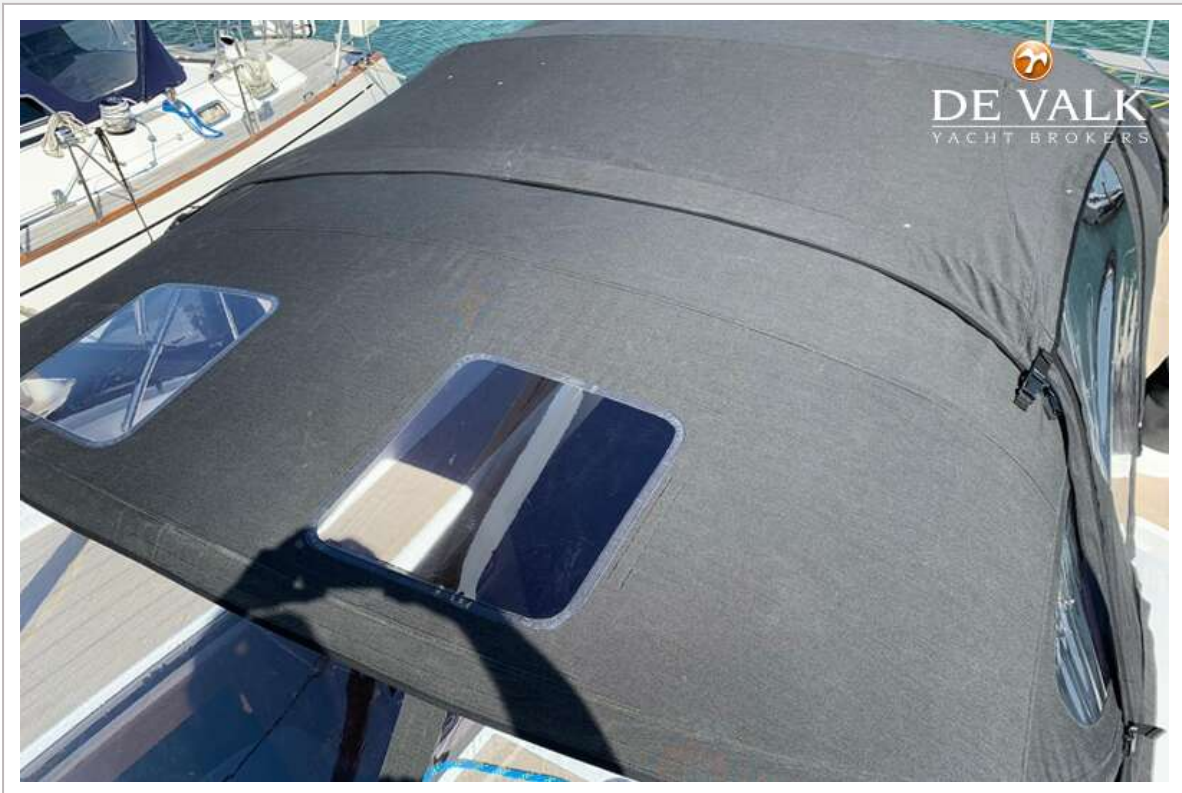




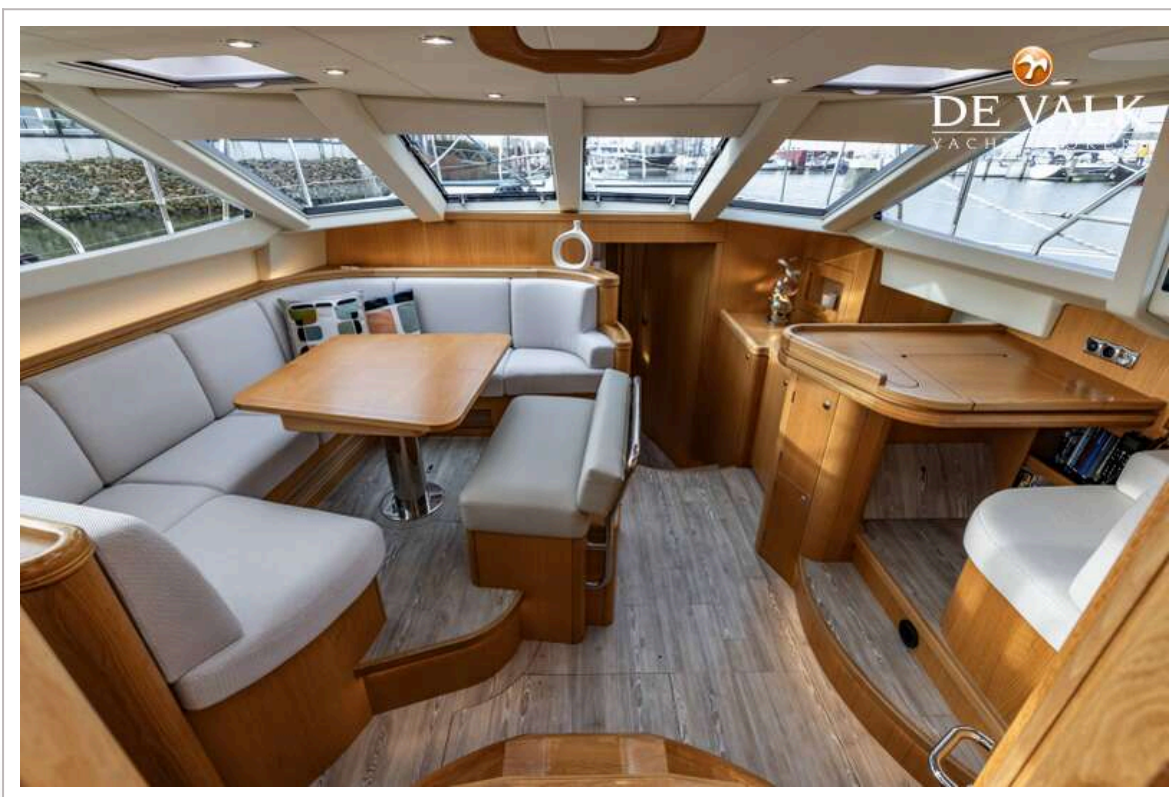


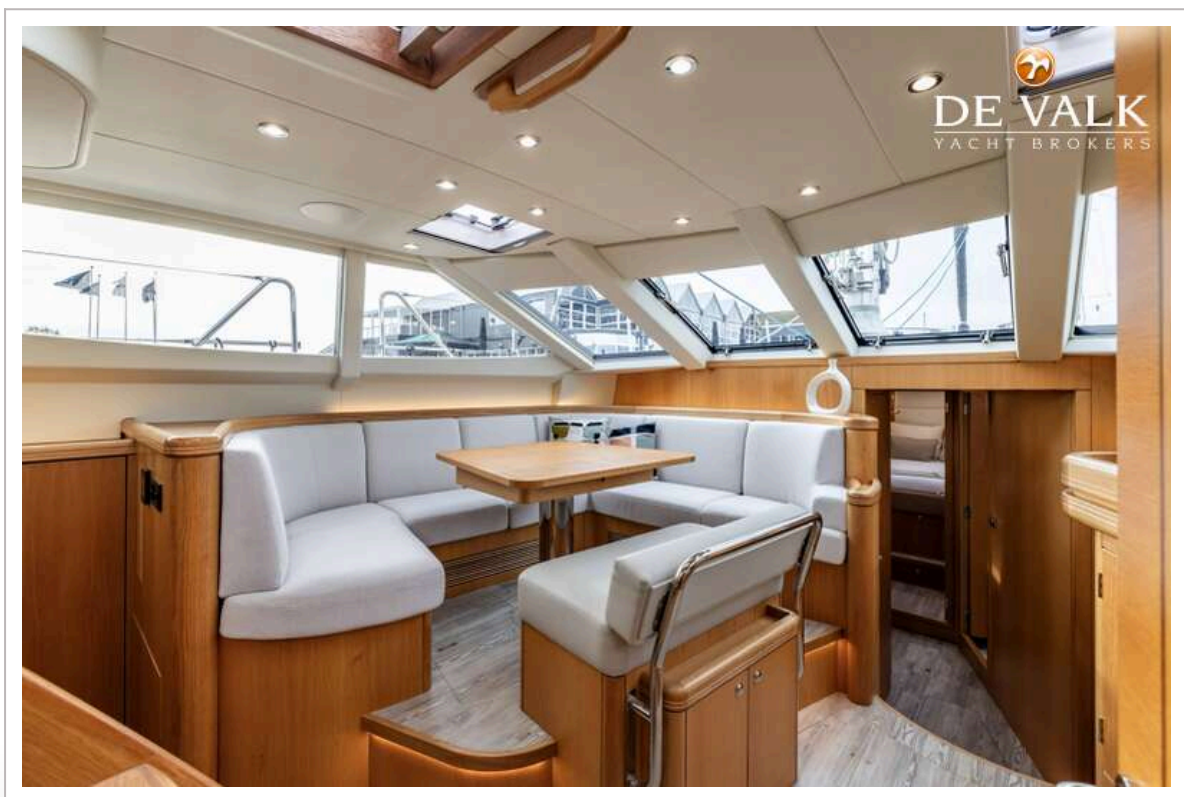
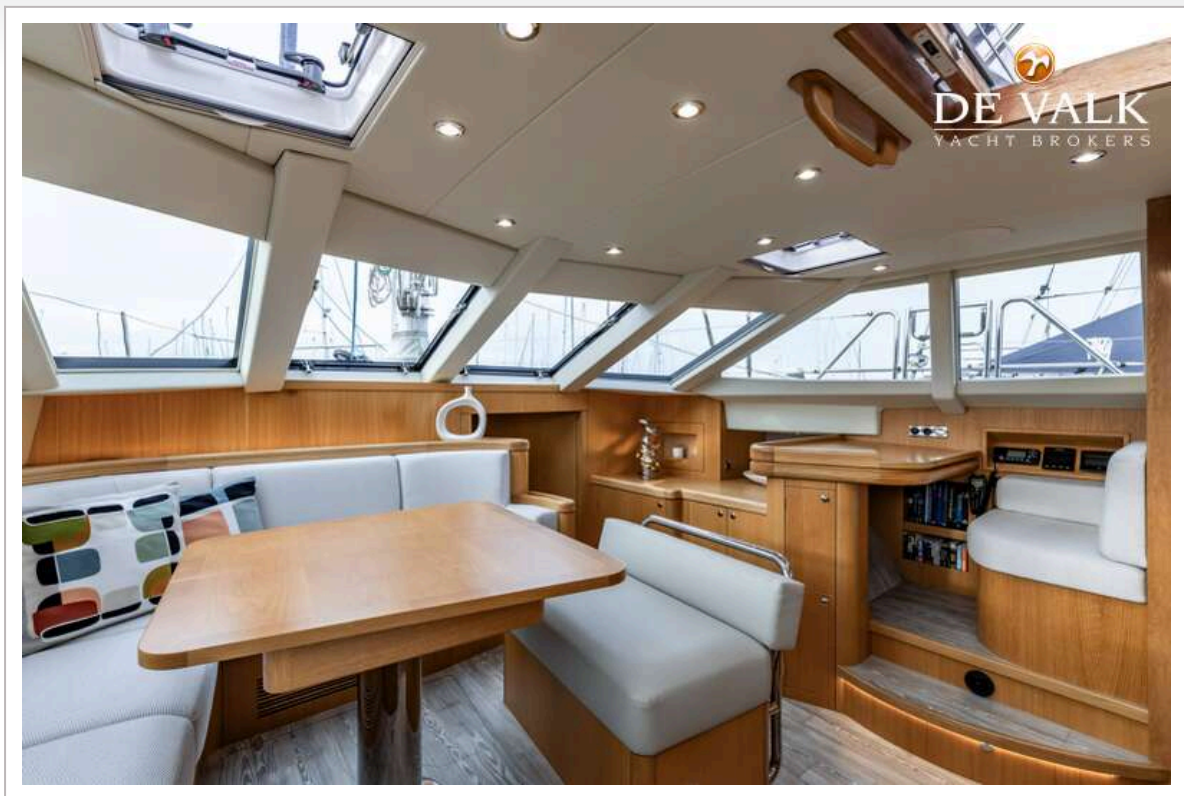
DISCOVERY 58



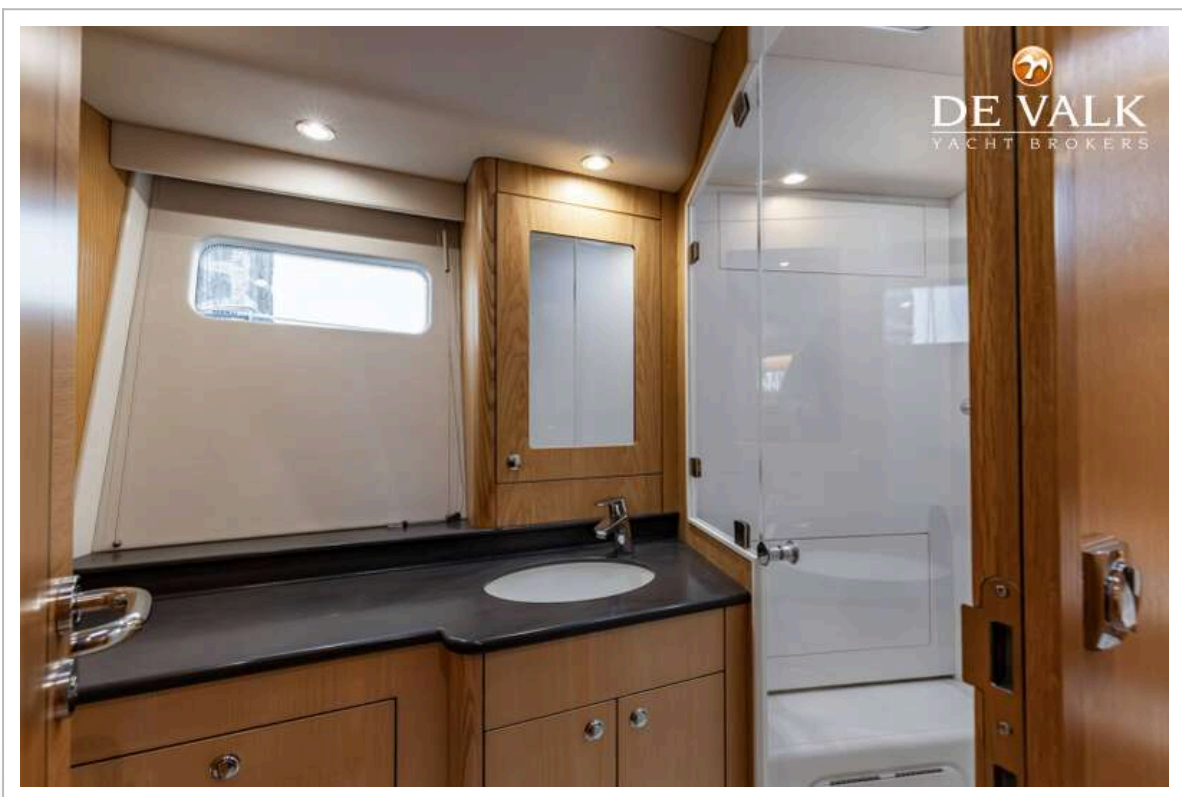


DISCOVERY 58

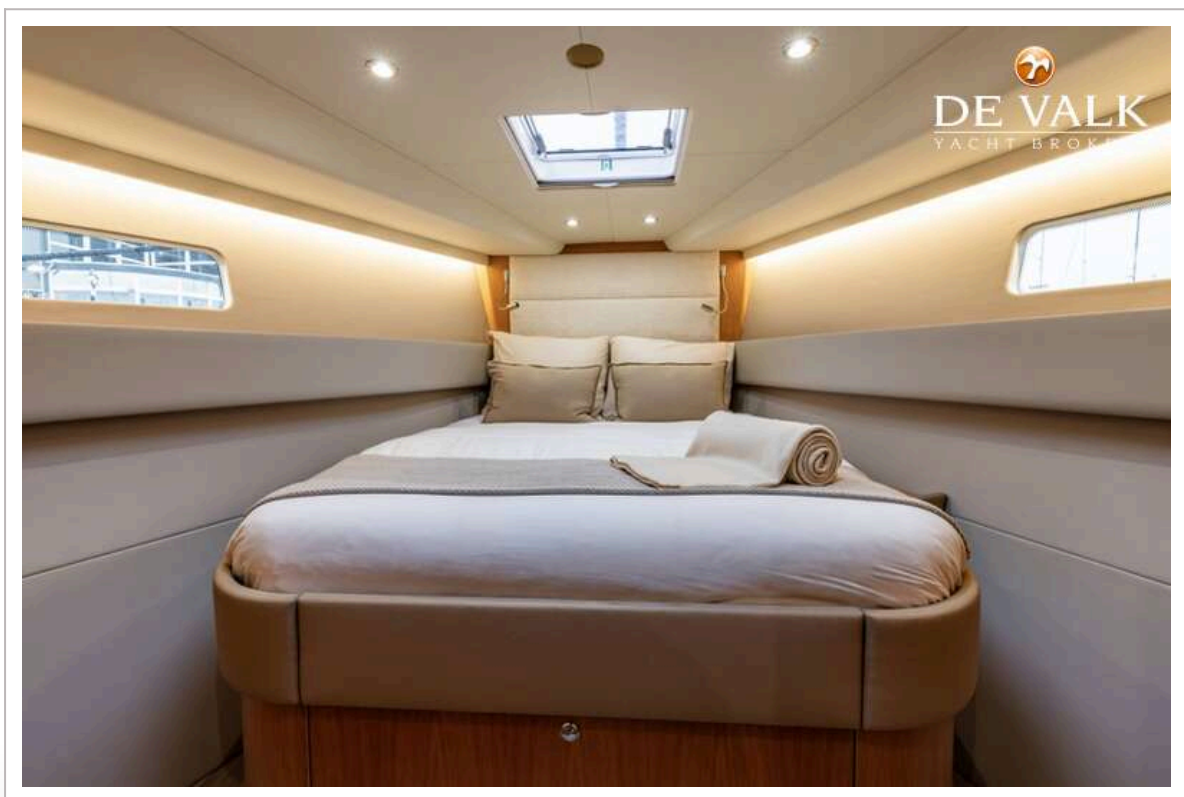
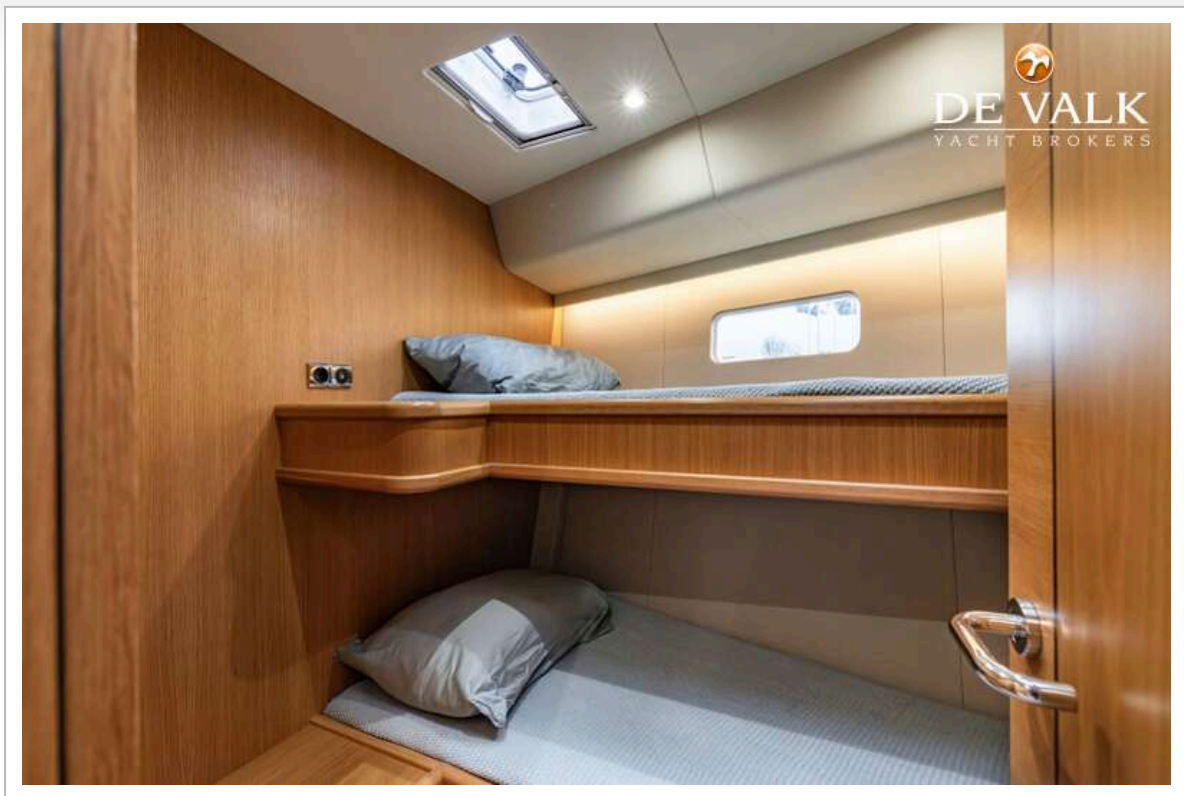


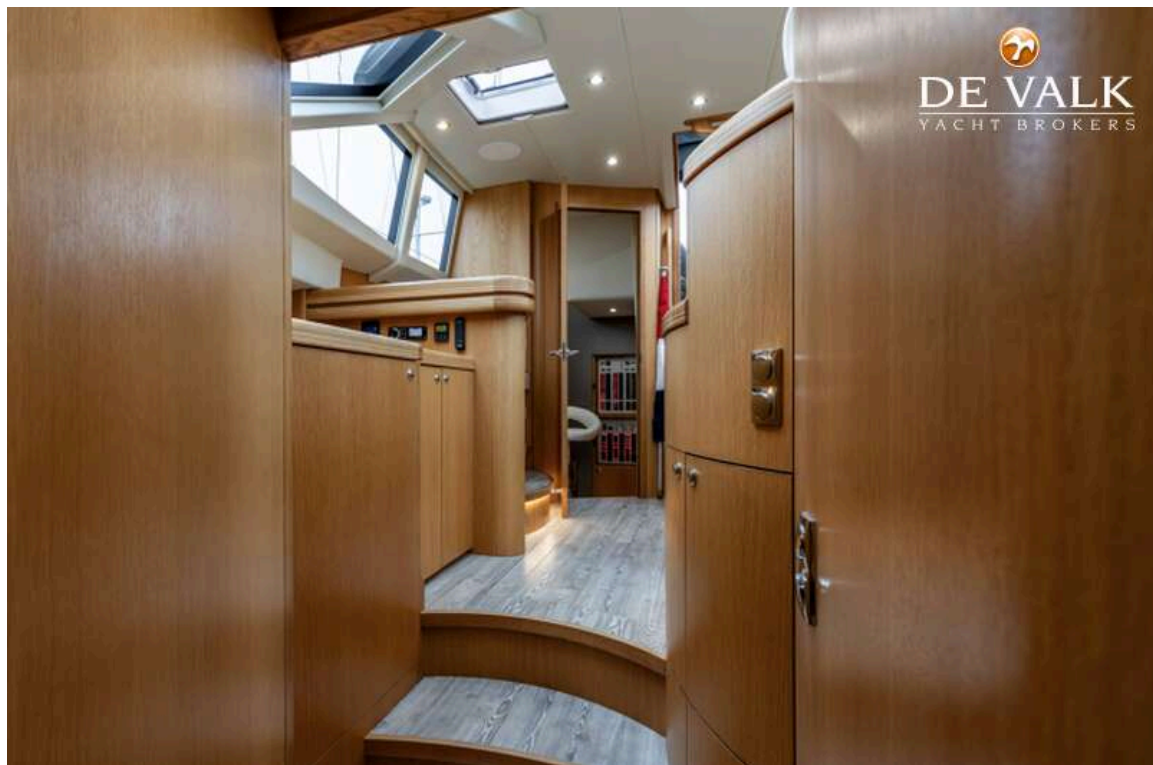


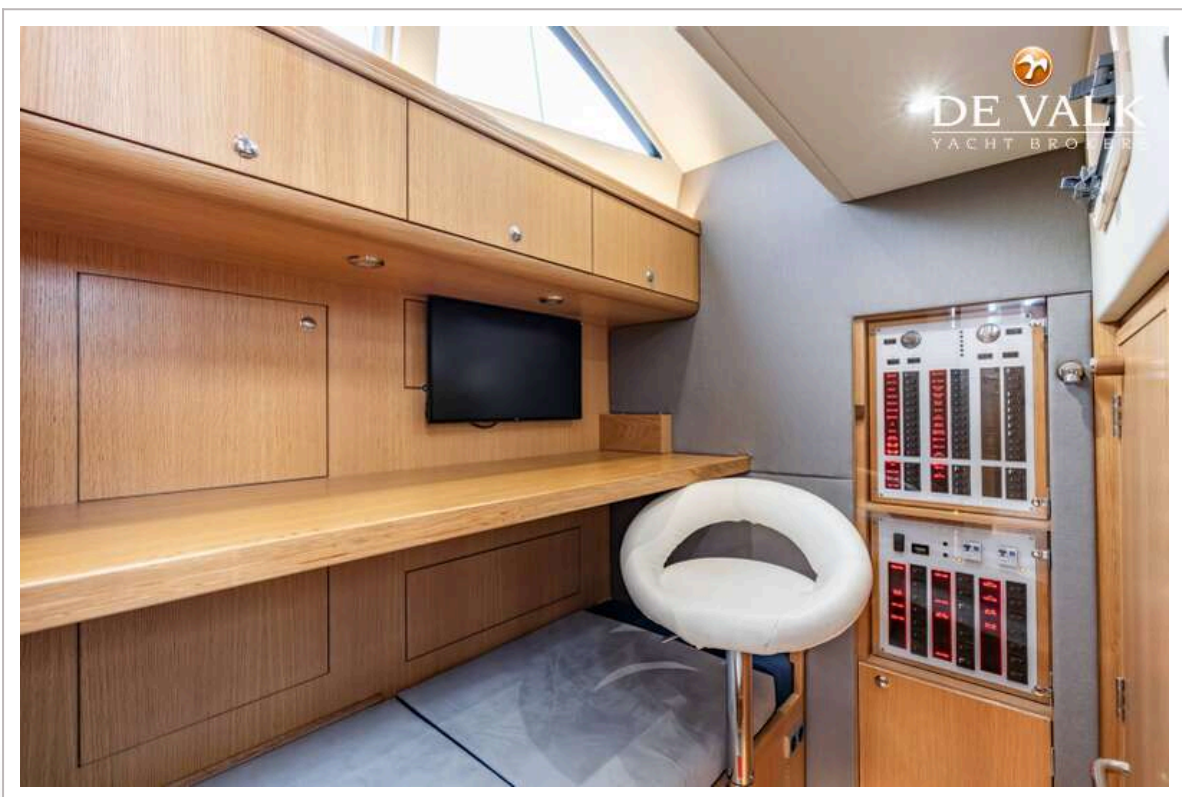
DISCOVERY 58











DISCOVERY 58



