



## PRINCESS V65

# PRINCESS V65

## BROKER'S COMMENTS

Special attention for this absolute amazing Princess V65. The 2 original MAN engines were fully replaced for new in 2021; all invoices available. Spanish flag with charter licence, but hardly chartered. Transfer to any flag is possible, delivered in- or excluding VAT. Overall, fully up-to- date, new 2025 white hull paint, in superb cosmetic and technical condition. Inside beautiful high gloss woodwork, but without the ugly usual milky drips. Outside the V65 offers great comfort, lots of living and entertainment space, plus a hydraulic platform. A like new yacht for private or charter use.

*Willem Koopmans*

## SPECIFICATIONS

<b>Dimensions</b>	20.17 x 5.08 x 1.35 (m)	<b>Builder</b>	Marine Projects Ltd.
<b>Built</b>	2001	<b>Cabins</b>	3
<b>Material</b>	GRP	<b>Berths</b>	6
<b>Engine(s)</b>	2 x MAN D2868LE466 diesel	<b>Hp/Kw</b>	2 x 1,300.00 (hp), 956.80 (kw)
<b>Asking price</b>	€ 495.000 (VAT Not paid)	<b>Lying</b>	contact sales office

## CONTACT

<b>Sales office</b>	De Valk Costa Blanca	<b>Telephone</b>	+34 96 50 21 569
<b>Address</b>	Costa Blanca Region 03730 Javea Alicante ES	<b>E-mail</b>	costablanca@devalk.nl

## DISCLAIMER

These particulars are given in good faith as supplied but cannot be guaranteed.



## GENERAL

Model	PRINCESS V65
Type	motor yacht
LOA (m)	20,17
Beam (m)	5,08
Draft (m)	1,35
Headroom (m)	2,05
Year built	2001
Launched	2001
Builder	Marine Projects Ltd.
Country	United Kingdom
Displacement (t)	22
CE norm	B
Hull material	GRP
Hull colour	off-white NEW paint May 2025
Hull shape	V-shaped hull
Superstructure material	GRP
Deck material	GRP
Deck finish	teak
Superstructure deck finish	non-skid moulded in
Antifouling (year)	May 2025
Window material	tempered glass
Radar arch	yes
Fuel tank (litre)	1800
Fuel tank 2 (litre)	1800
Level indicator (fuel tank)	yes
Freshwater tank (litre)	750
Level indicator (freshwater)	yes
Blackwater tank (litre)	yes
Wheel steering	yes
Inside helm position	yes



More info on paintwork yes

## ACCOMMODATION

Cabins	3
Berths	6
Crew cabin	yes
Crew berths	1
Interior	cherry Varnish with no milk
Layout	3 cabin layout
Floor	carpet
Open cockpit	yes
Aft deck	yes
Headroom saloon (m)	2,05
Sliding roof	manual
Air-conditioning	reverse cycle airco All cabins
Dinette	yes
Sliding door to cockpit	yes
Galley	yes
Countertop	Duropol Wood and glass
Sink	stainless steel
Cooker	induction 3 burner
Microwave	yes
Fridge	yes
Freezer	yes
Hot water system	220V + engine
Water pressure system	electrical
Owners cabin	French bed
Bed length (m)	2,1
Wardrobe	hanging/drawers/shelves
Bathroom	en suite
Toilet	en suite



# PRINCESS V65

Toilet system	electric
Wash basin	in the bathroom
Shower	en suite
Guest cabin 1	double bed
Bed length (m)	2
Wardrobe	hanging/drawers/shelves
Bathroom	en suite
Toilet	en suite
Toilet system	electric
Wash basin	in the bathroom
Shower	en suite
Guest cabin 2	bunk bed One on 90"
Bed length (m)	1,95
Wardrobe	hanging and shelves
Bathroom	shared Also for day guests
Toilet	shared
Toilet system	electric
Wash basin	in the bathroom
Shower	shared
Guest cabin 3	yes
Crew cabin(s)	yes
Extra info	Barbecue plate plus fridge and sink in cockpit

## MACHINERY

No of engines	2
Make	MAN
Type	D2868LE466
HP	1300
kW	956.80
Fuel	diesel
Year installed	2021



Engine hours	315
Engine cooling system	freshwater heat exchanger
Drive	shaft
Shaft seal	2021
Engine controls	electrical & bowden cable Plus Yacht-controler
Bowthruster	electric
Sternthruster	electric
Exhaust	watercooled
Propeller shaft material	stainless steel
Electric bilge pump	yes
Electrical installation	220 volt
Generator	Onan Marine Genset 12 kw
Running hours generator	840, ca.
Start battery	2
Service battery	2
Generator battery	1
Bowthruster battery	1
Sternthruster battery	1
Battery charger	yes
Inverter	yes
Shorepower	yes
Watermaker	Idromar 60 ltr
Trimtabs	yes
Extra info	Wireless remote yacht controler

## NAVIGATION

Compass	yes
Electric compass	On pilot
Depth sounder	Raymarine ST60
Log	Raymarine ST60
VHF	yes



Autopilot	Raymarine ST6001
Rudder angle indicator	Raymarine ST60 on pilot
Radar	yes
Radar/GPS/plotter	Raymarine Axiom 12 inch
AIS transponder	yes
Navigation lights	yes
Extra info	Yacht controller
Extra info	Under water lights and name in SS is lighted

## EQUIPMENT

Fixed hardtop	yes
Cockpit cover	yes
Sun awning	yes
Cockpit cushions	yes
Cockpit table	yes
Bathing platform	Hydraulic for tender
Boarding ladder	yes
Gangway	yes
Deck shower	yes
Anchor	yes
Anchor chain	yes
Windlass	yes
Capstan	yes
Deck wash	yes
Dinghy	Jet ski not included
Sea railing	yes
Grab rail (superstructure)	yes
Lifejackets	yes
Horn	yes
Fenders	yes
Mooring lines	yes



# PRINCESS V65

TV	On lift
Radio-cd player	yes
iPod connection	yes
Cockpit speakers	yes
Speakers in salon	yes
Fire extinguisher	yes
Extinguisher in engine room	yes





# PRINCESS V65

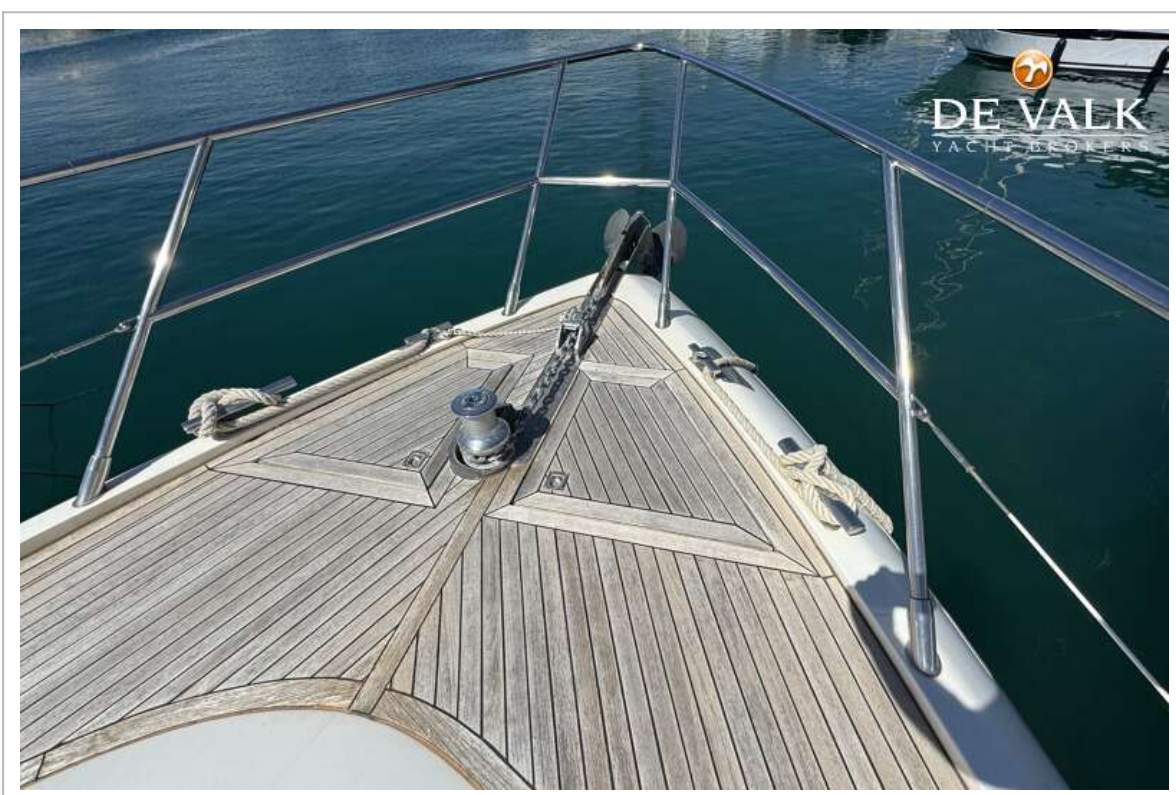


# PRINCESS V65





# PRINCESS V65



# PRINCESS V65





# PRINCESS V65



# PRINCESS V65

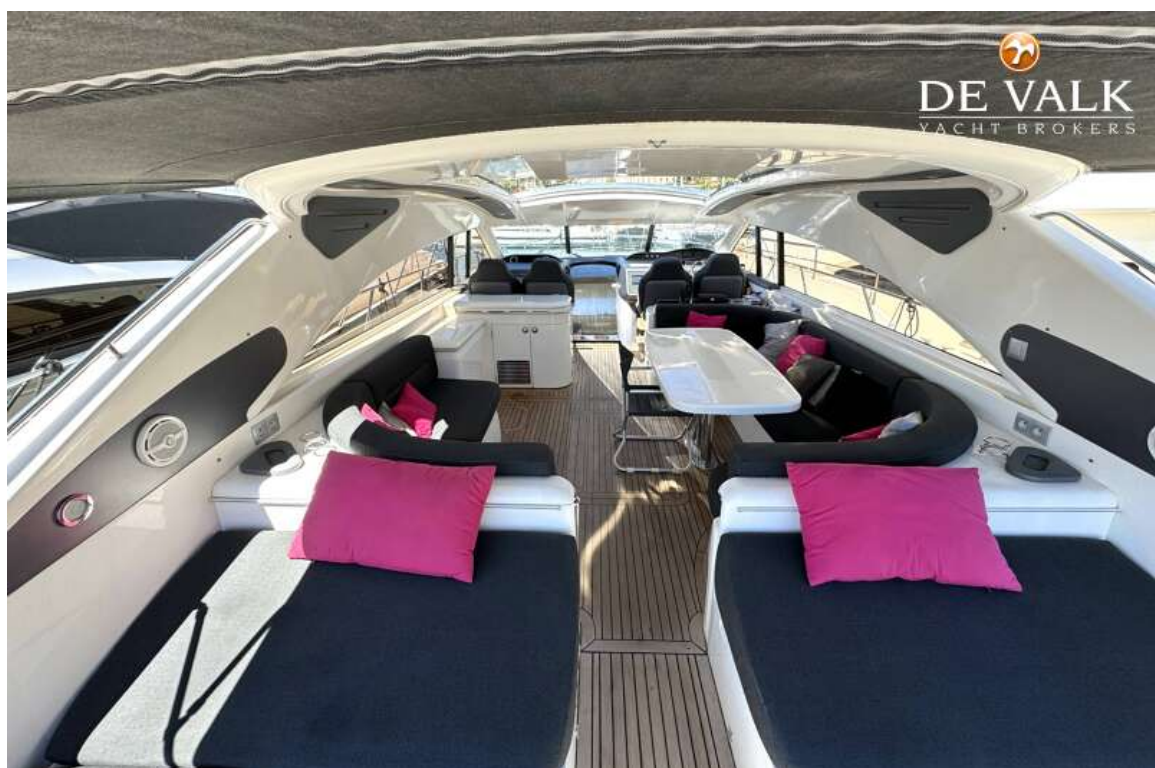




# PRINCESS V65

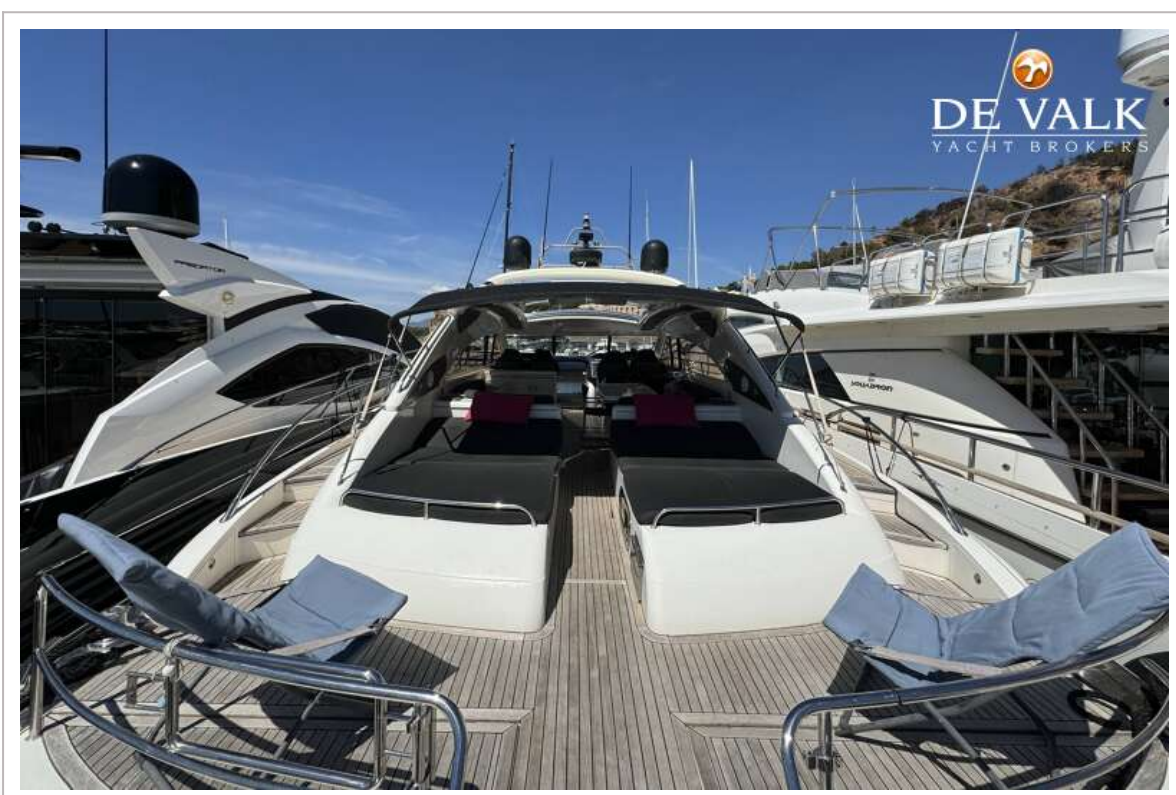
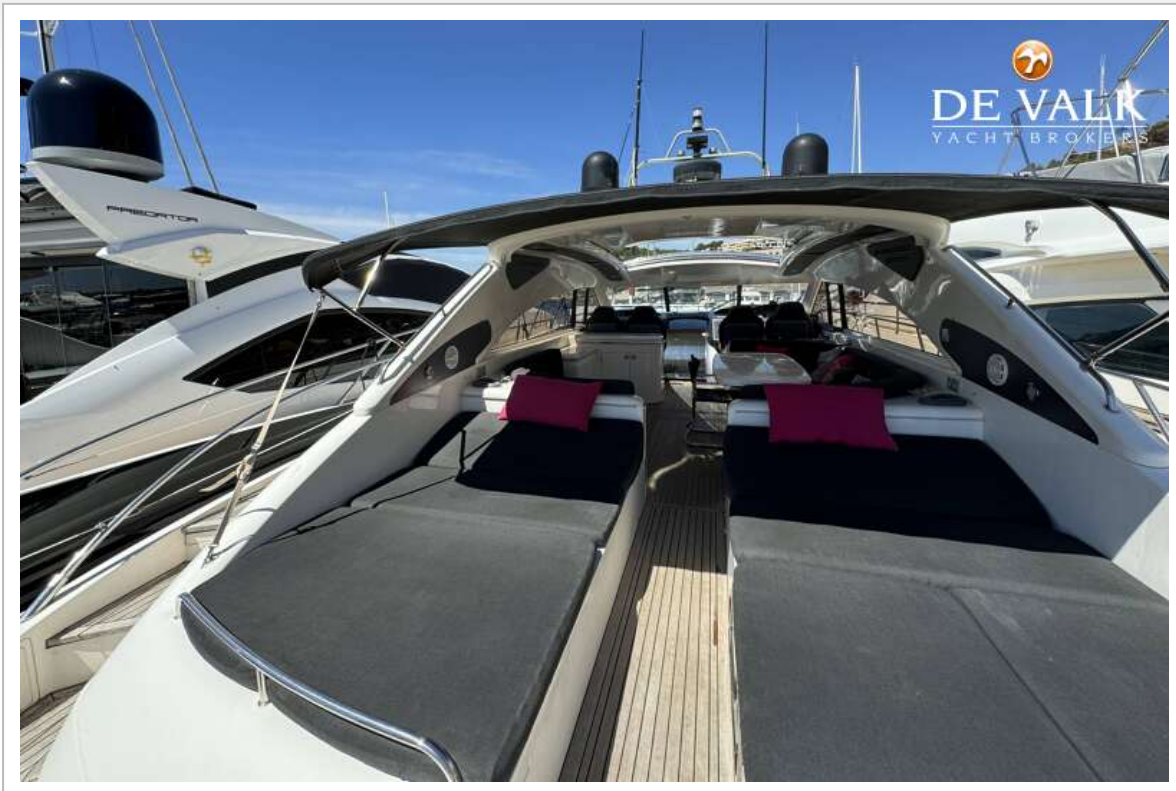


# PRINCESS V65





# PRINCESS V65



# PRINCESS V65

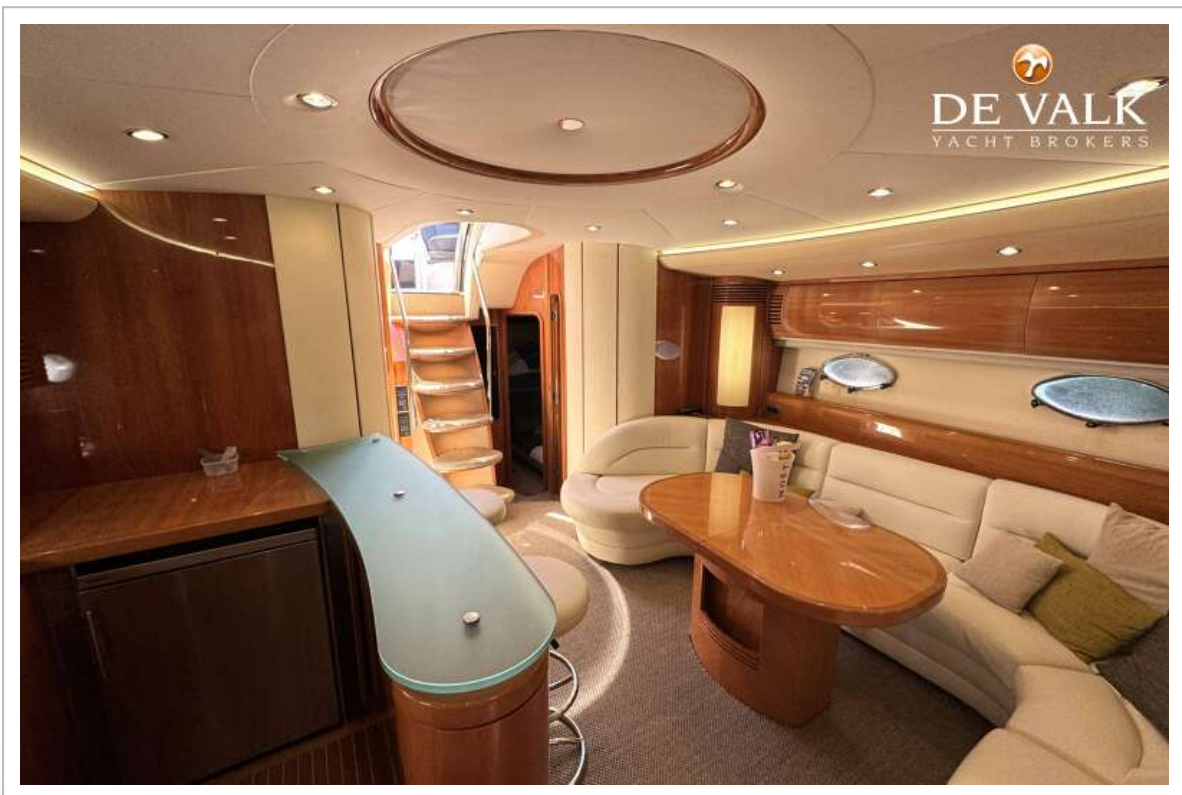
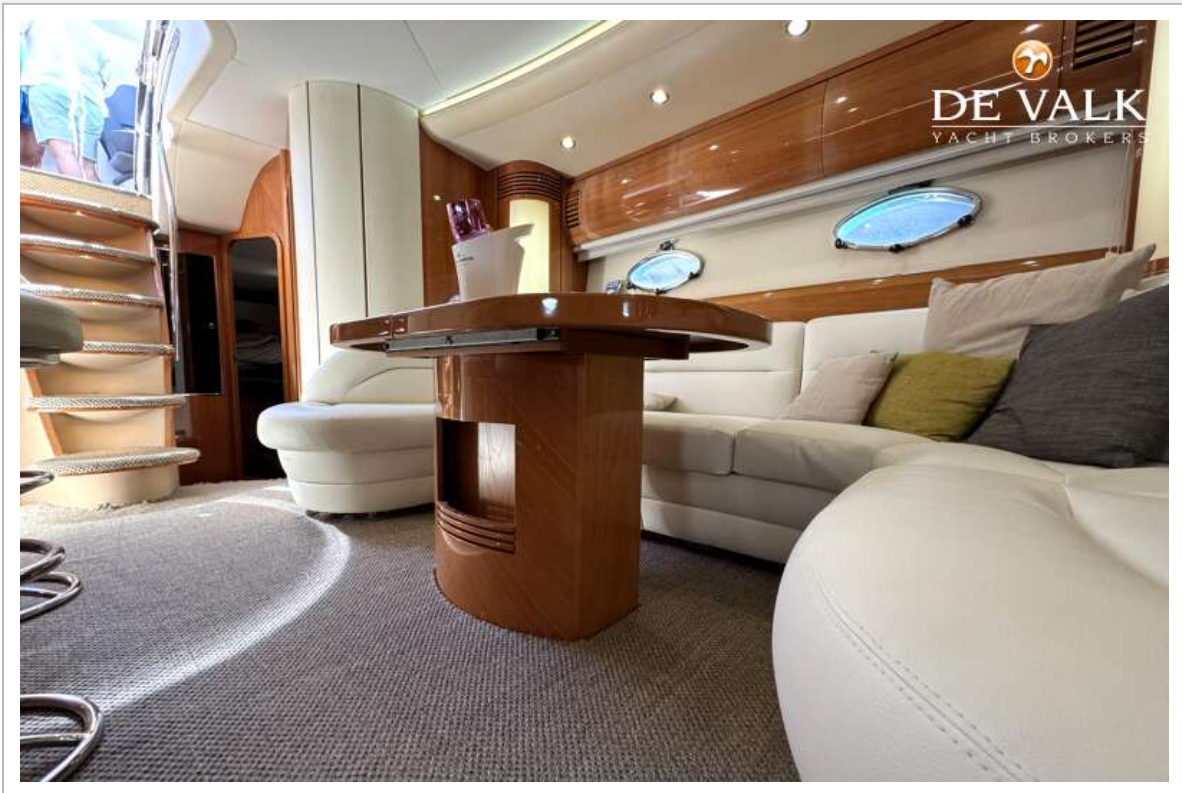




# PRINCESS V65

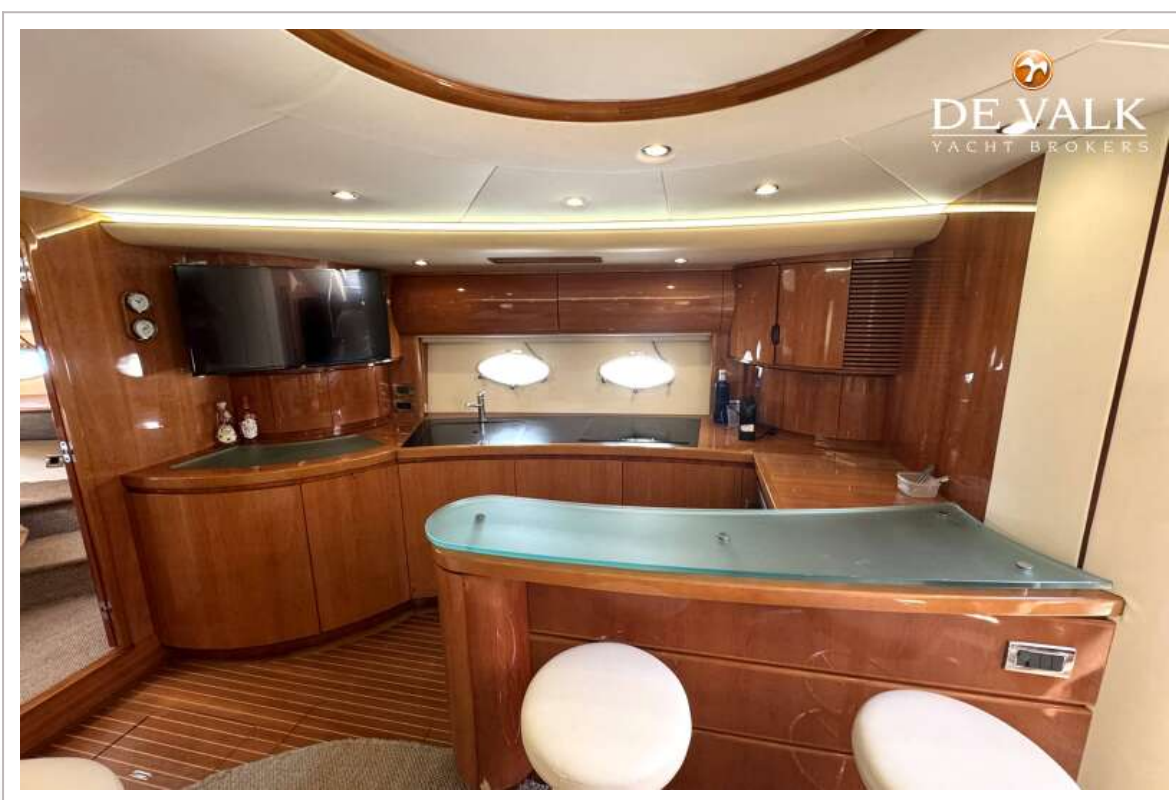


# PRINCESS V65





# PRINCESS V65

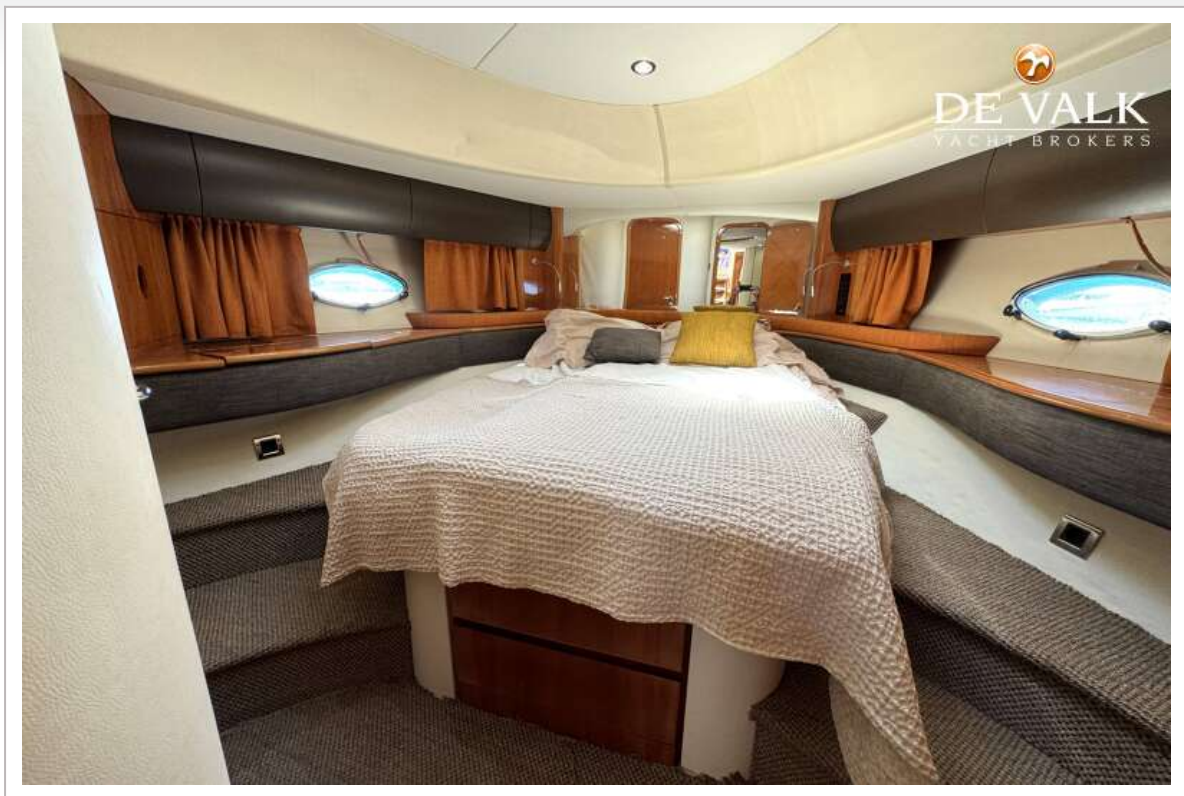


# PRINCESS V65

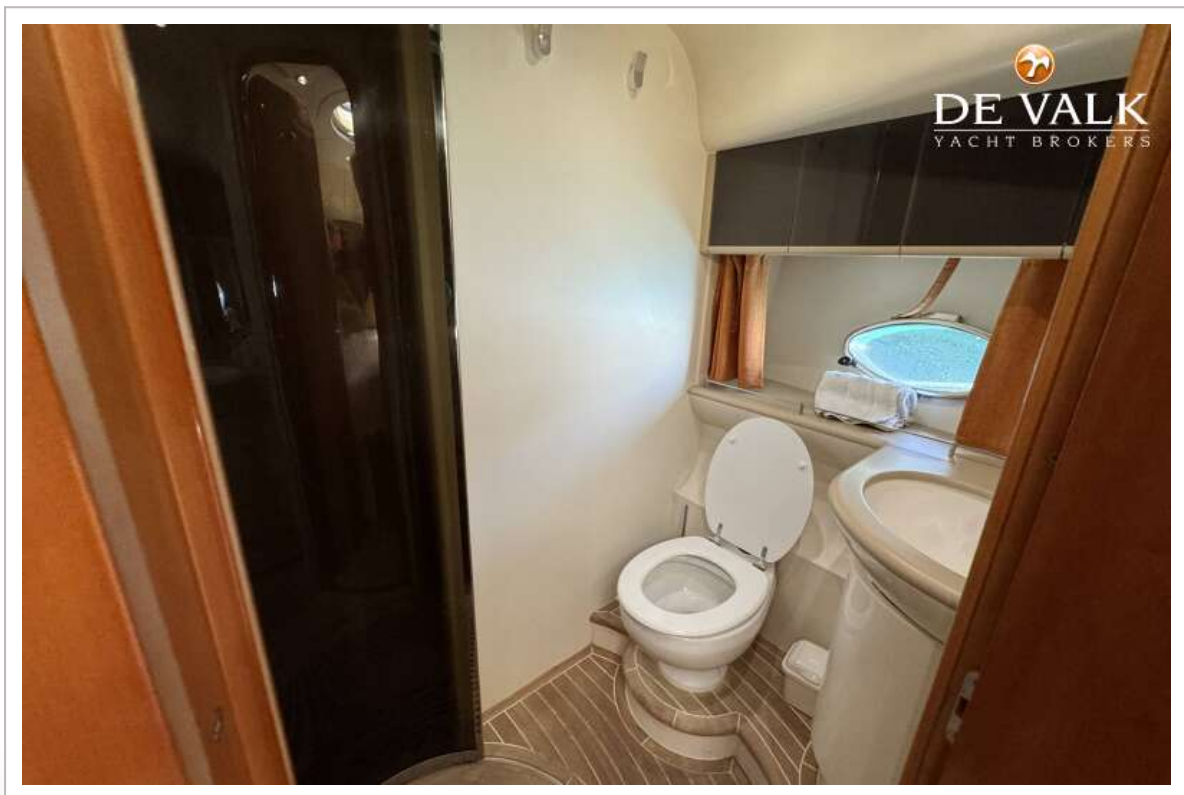




# PRINCESS V65



# PRINCESS V65

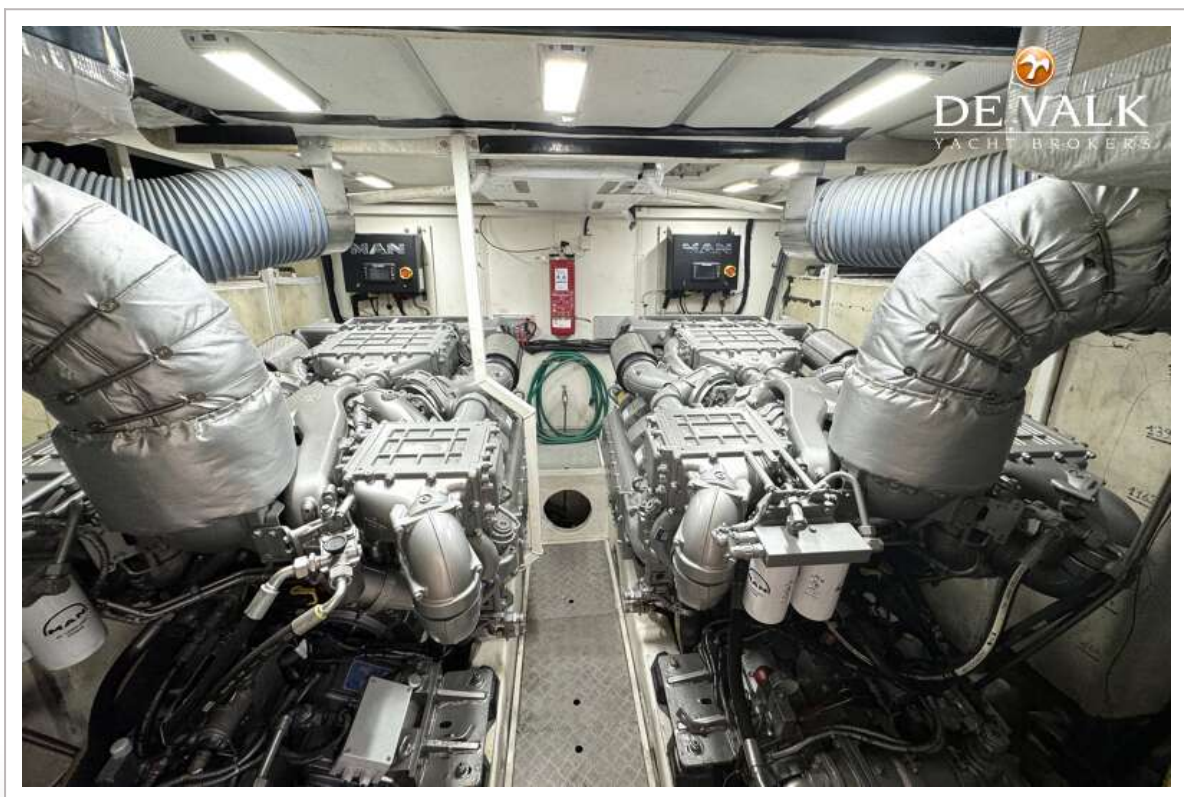
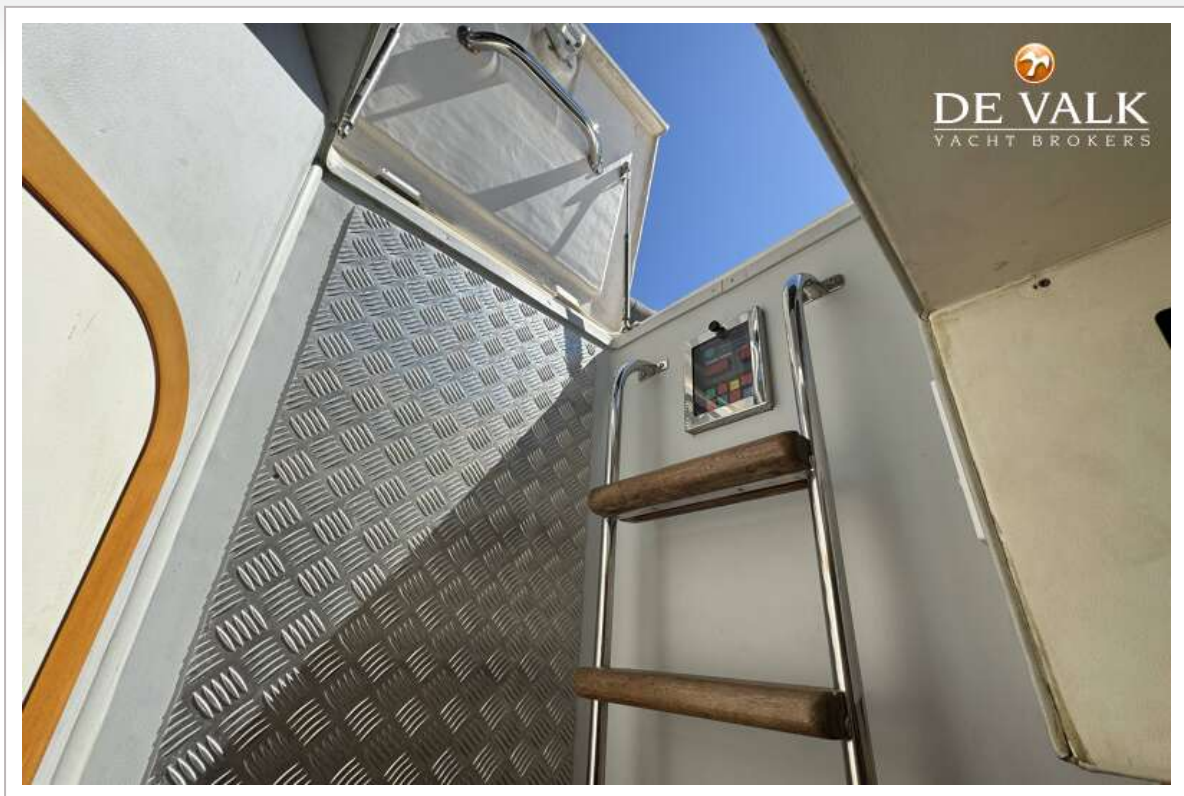




# PRINCESS V65

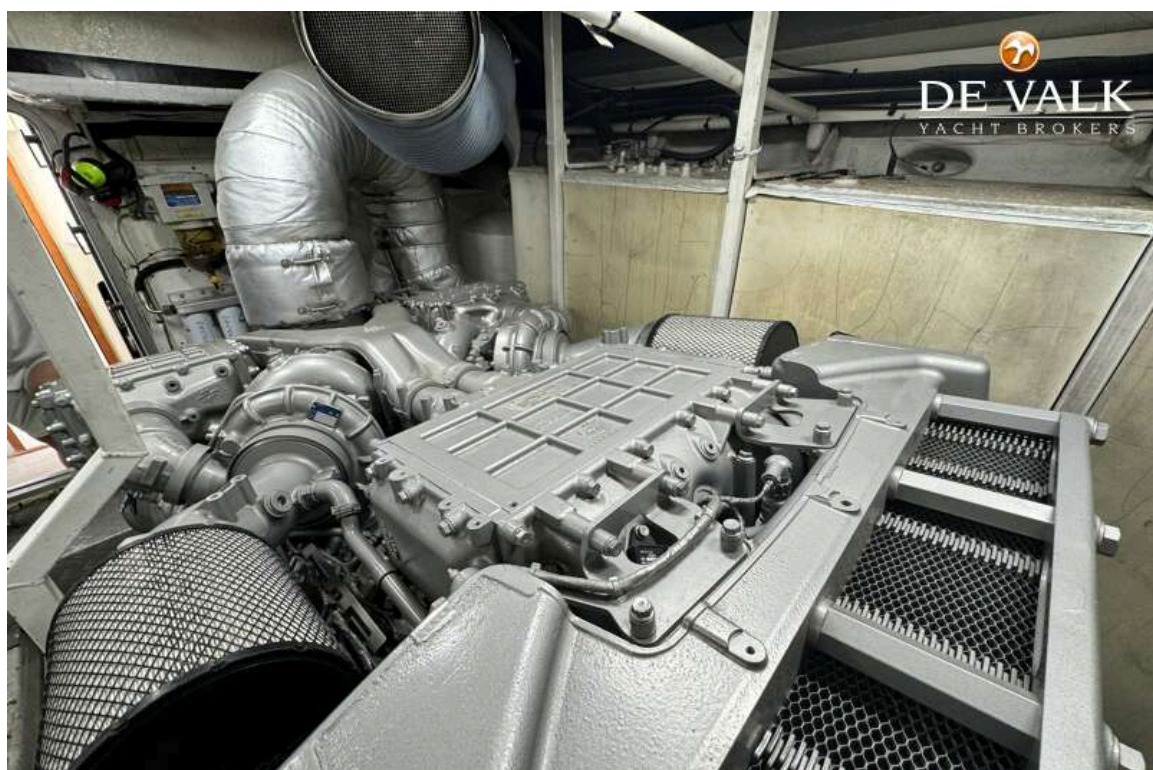


# PRINCESS V65



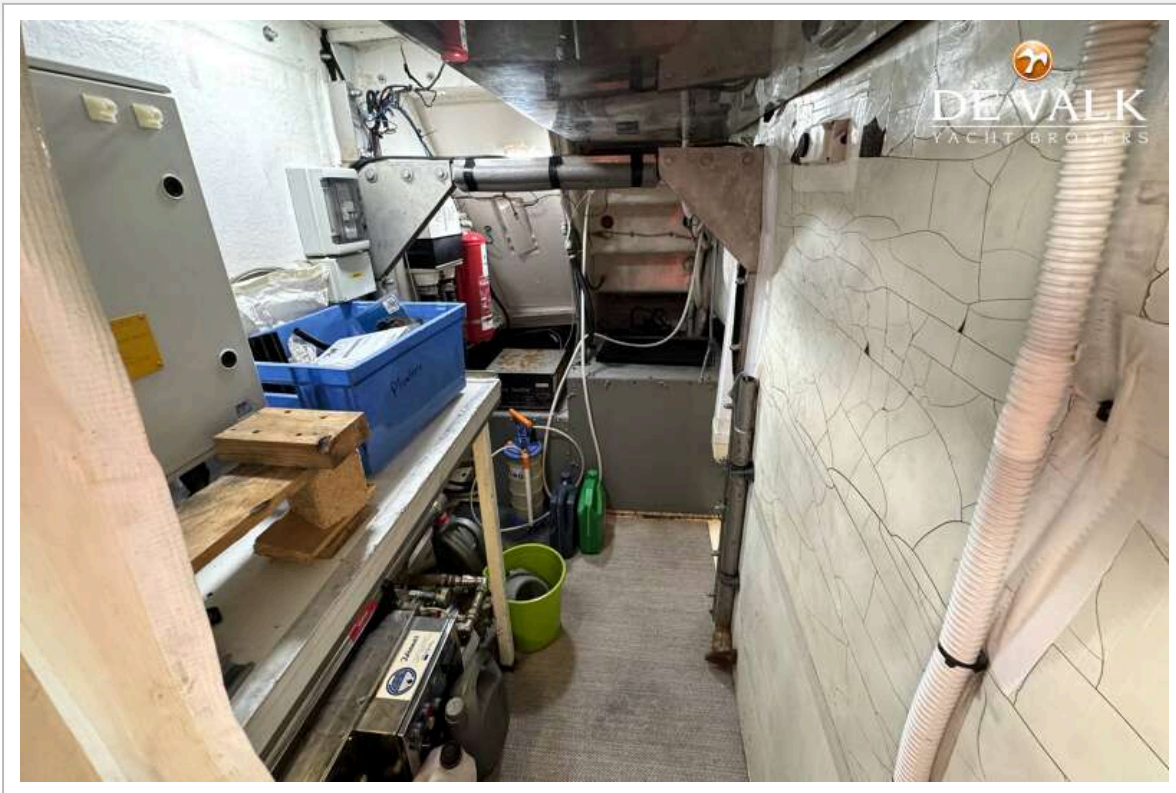


# PRINCESS V65

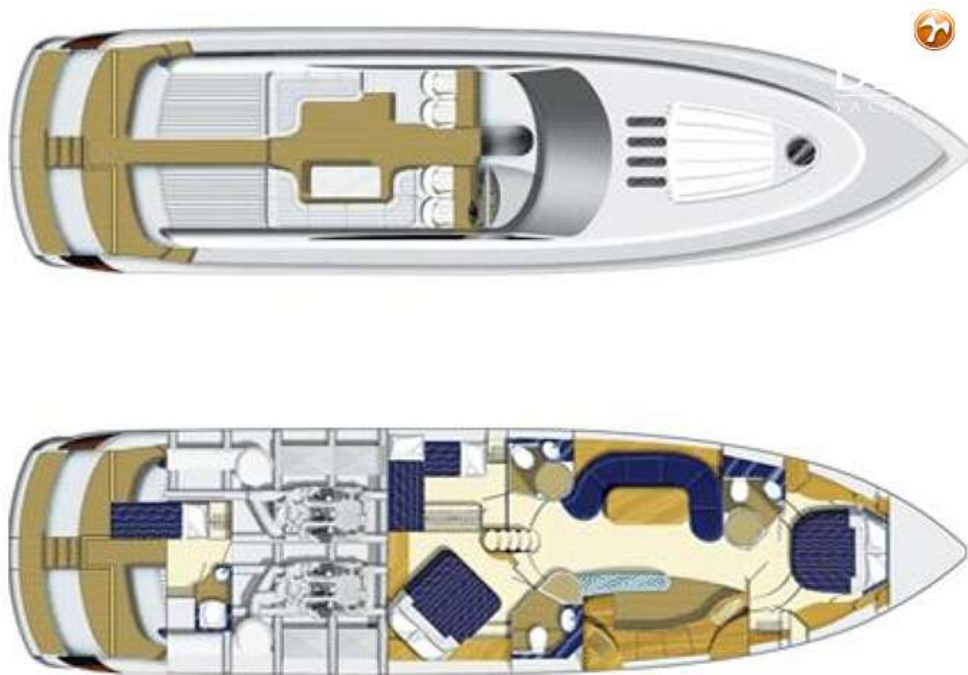




# PRINCESS V65



# PRINCESS V65



Standard layout with optional crew cabin

