



## KEMPERS 2200



## BROKER'S COMMENTS

"Our Choice" built by Kempers in the Netherlands to the high yacht building standard The Dutch are known for. The ideal yacht for living on board, making long trips, or cross the Ocean everything is possible. Her present owner has made a huge list of improvements, and did a lot of maintenance works that have made the boat ready to go on any trip. Lots of updates have been installed. "Our Choice" offers a cozy interior where the aft deck, salon, kitchen and owners cabin are all in one level. Located in Copenhagen, ready for inspection. Please make appointments through our Sneek office.

*Pieter Bosma*

## SPECIFICATIONS

<b>Dimensions</b>	22.60 x 5.76 x 2.05 (m)	<b>Builder</b>	Kempers b.v. Alphen aan de Rijn
<b>Built</b>	1992	<b>Cabins</b>	2
<b>Material</b>	Steel	<b>Berths</b>	6
<b>Engine(s)</b>	2 x Caterpillar 3406 B diesel	<b>Hp/Kw</b>	2 x 300.00 (hp), 220.80 (kw)
<b>Asking price</b>	€ 1.100.000 (VAT Paid)	<b>Lying</b>	contact Sneek

## CONTACT

<b>Sales office</b>	De Valk Sneek	<b>Telephone</b>	+31 (0)515 42 80 30
<b>Address</b>	Zwolsmanweg 7 8606 KC Sneek NL	<b>E-mail</b>	sneek@devalk.nl

## DISCLAIMER

These particulars are given in good faith as supplied but cannot be guaranteed.



## GENERAL

Model	KEMPERS 2200
Type	motor yacht
LOA (m)	22,60
Beam (m)	5,76
Draft (m)	2,05
Air draft (m)	5,90
Headroom (m)	2,05
Year built	1992
Builder	Kempers b.v. Alphen aan de Rijn
Country	The Netherlands
Designer	Kempers Sr.
Displacement (t)	90
Ballast (tonnes)	lead 1,5 ton for compensating the bathing platform
CE norm	NA
Hull material	steel
Hull colour	white
Hull thickness (mm)	6,2 & 5,4 mm
Hull shape	round-bilged
Keel type	tandem keel
Superstructure material	aluminium
Deck plate thickness (mm)	5.0 mm
Rubbing strake	stainless steel
Deck material	steel
Deck finish	teak
Superstructure deck finish	paint
Cockpit deck finish	teak
Window frame	aluminium
Window material	double glazing Rafa, double glazing in all windows in the superstructure
Deckhatch	yes
Portholes	copper chromed



<b>Insulation</b>	rockwool
<b>Flybridge</b>	Large spacious flybridge with dining table and barbeque, the navigation mast that can be lowered hydraulic, a L-shaped lounge set with rain proof pillows and a large teak table, and aft the boat crane with the dinghy.
<b>Flybridge cover</b>	covers for the barbeque, deck crane, dinghy, and lounge set
<b>Flybridge suncover</b>	yes
<b>Mast can be lowered</b>	hydraulic Mast renovated and repainted 2021
<b>Fuel tank (litre)</b>	steel 2x 5790 Ltr, tanks with manholes and double bottom
<b>Level indicator (fuel tank)</b>	yes
<b>Fuel daytank (litre)</b>	steel 300 Ltr. filled with an electric fuelpump
<b>Level indicator (daytank)</b>	yes
<b>Freshwater tank (litre)</b>	steel 1x 2763 Ltr + 1x 5845 Ltr. with man holes renovated 2021
<b>Level indicator (freshwater)</b>	yes
<b>Blackwater tank (litre)</b>	steel 2885 Ltr
<b>Level indicator (blackwater)</b>	yes
<b>Blackwater tank extraction</b>	pump
<b>Wheel steering</b>	hydraulic
<b>Inside helm position</b>	yes
<b>More info on hull</b>	Beatiful roundbilged hull with a flaired bow and stabilizers. Spacious sidedecks, cosy aftdeck, and a spacious flybridge.
<b>More info on paintwork</b>	Exterior painting has been redone in 2022, paintwork in the ancorlocker, aftstorage, bilges has recently finisched
<b>Extra info</b>	Teak decks have been overhauled and partly replaced.
<b>Extra info</b>	This Kempers has a valid CVO certificate an can therefor be sailed in the European Inland waters

## ACCOMMODATION

<b>Cabins</b>	2
<b>Berths</b>	6
<b>Interior</b>	teak



<b>Layout</b>	"Our Choice" has a perfect layout for living on board with her aftdeck, salon, kitchen and ownerscabin in one level. One stairs up you arrive in the steeringhouse with acces to the flybridge, from the living level one stais down you reach the walk in room with the acesdoor to the eneginerroom, bathroom with sauna and the guestcabin with a privat bathroom. The Walk in room is large enough to convert into a third cabin.
<b>Floor</b>	Partly carpet partly Parquet
<b>Open cockpit</b>	with a full cover arround te cockpit
<b>Pilot house</b>	yes
<b>Saloon</b>	yes
<b>Headroom saloon (m)</b>	2,03 m.
<b>Heating</b>	central heating Kabola KB50 (2022)
<b>Air-conditioning</b>	reverse cycle airco 7 units system checked and renovated the full system in 2022
<b>Chart table</b>	yes
<b>Opening door to aft deck</b>	Teak
<b>Galley</b>	yes
<b>Sink</b>	GRP Placed 2020
<b>Cooker</b>	induction Siemens 5 burner (2023) + Pan Holders
<b>Oven</b>	AEG BBP8000B1 (2023)
<b>Extractor</b>	yes
<b>Microwave</b>	AEG MBE2658SEB (2023)
<b>Fridge</b>	on working hight
<b>Freezer</b>	3 drawes below the fridge
<b>Hot water system</b>	220V or central heating An extra boiler on 220V was installed for summer use (2025)
<b>Water pressure system</b>	Watersystem rebuild in copper (2020)
<b>Dishwasher</b>	Siemens Q500 (2023)
<b>Hot water tap</b>	with boiling water and cold Sparkling water Quoker (2020)
<b>Owners cabin</b>	French bed On the same level as the main entrance, salon and kitchen
<b>Bed length (m)</b>	2,00 x 1,60 m.
<b>Wardrobe</b>	hanging/drawers/shelves



Bathroom	en suite
Toilet	en suite
Toilet system	electric Mobiflasch
Wash basin	in the bathroom
Guest cabin 1	French bed
Bed length (m)	2,05 x 1.45 m.
Wardrobe	hanging/drawers/shelves
Bathroom	en suite
Toilet	en suite
Toilet system	electric Mobiflasch
Wash basin	in the bathroom
Shower	en suite 76 x 79 cm.
Guest cabin 2	Now a "Walk in Closet"
Bed length (m)	possible to create a second guest cabin here
Wardrobe	walk-in closet With lost of drawers and hanging lockers
Bathroom	seperate bathroom with Sauna
Toilet	yes
Toilet system	electric Mobiflasch
Wash basin	in the bathroom
Shower	75 x 78 cm.
Extra info	Sauna and bath tup in this bathroom
Washing machine	Bosch Serie 6 10 Kg. (2023)\
Dryer	Bosch Serie 6 Iron Assist (2023)
Sauna	198 x 60 cm (electric)
Flybridge	yes
Extra info	The lower cabins can be reached through the PS sidedoor and stairs as well as from the salon. Also the engine room door is in this spot.
Extra info	-wooden luxaflex blinds -Central ventilation system Wolf KG15

## MACHINERY

No of engines	2
---------------	---



# KEMPERS 2200

<b>Make</b>	Caterpillar
<b>Type</b>	3406 B
<b>HP</b>	300
<b>kW</b>	220.80
<b>Fuel</b>	diesel
<b>Year installed</b>	1992
<b>Consumption (l/hr)</b>	75
<b>Engine hours</b>	2550
<b>Engine cooling system</b>	closed keelcooling
<b>Drive</b>	shaft
<b>Shaft seal</b>	yes
<b>Engine controls</b>	electrical ZF Matters Microcommander engine control
<b>Gearbox</b>	hydraulic Twin Disk MG 5111
<b>Engine controls</b>	RMC wireless remote control for thrusters and engine control
<b>Bowthruster</b>	hydraulic 30 Hp
<b>Sternthruster</b>	electric 30 Hp
<b>Exhaust</b>	watercooled Exhaust sytem replaced in 2022
<b>Propeller type</b>	fixed Van Voorden Bronze, with Prop Paint
<b>Propeller blades</b>	5
<b>Propeller shaft material</b>	stainless steel RVS 316 90 MM
<b>Shaft lubrication</b>	grease Automatic greasing system
<b>Electric bilge pump</b>	yes
<b>Bilge alarm</b>	yes
<b>Electrical installation</b>	all electricity systems on board have been renovated, improved or replaced in the period of 2020 till 2023 24 / 220 \ 380 V.
<b>Generator</b>	wet exhaust Onan 25 Marine Genset type 25MDL6-Z in sound proof box
<b>Running hours generator</b>	4578 hours
<b>Generator 2</b>	wet exhaust Onan 12 marine Genset type 12MDL3-M in sound proof box
<b>Running hours generator 2</b>	6091 hours
<b>Batteries</b>	yes



<b>Start battery</b>	yes
<b>Service battery</b>	18 AGM 200 Ah (2020)
<b>Navigation Battery</b>	1x 200 Amp back up battery for the electrical systems
<b>Battery monitor</b>	A remote monitoring systems for a Mobile device is in use
<b>Battery charger</b>	2x Victron Orion 24/12/20 Victron Phoenix Smartcharger All placed in the period 2021-2023
<b>Battery charger/inverter</b>	Victron Multiplus II 24/3000/70 Victron Multiplus II GX 24/3000/70 Both placed in the period 2021-2023
<b>Diode battery combiners</b>	yes
<b>Shorepower</b>	with cable
<b>Insulation transformer</b>	for each incomming fase a seperate device 3x Victron Isolation Transformer 7000
<b>Stabilizers</b>	Koopnautic Searock retractable roll stabilisors refurbished 2023
<b>Extra info</b>	- entire Hydraulic system has been renovated and all hoses replaced 2021 - Exhaust temperature controle - Aft compartment with the steering system repainted and renovated 2022 - New Batteries 2020 -all measuring and alarm systems have been made digital and thus available online -
<b>Extra info</b>	-The electrical system can be controlled and managed via 2 screens in the pilothouse or by an app on your mobile device - Anti Theft alarm system with all that entails in terms of follower and sensor 2023 -Sewage system replaced 2021 -renovation of the watertanks 2021 -inspection and renovation of the bilges, steering room aft and forepeak including a new paint job 2023 - renovation of all electricity on board 2020-2023 -cleaning up old electronics and wiring (2020-2023) -
<b>Extra info</b>	Engine monitor and RPM counter 2x Radio Holland DU2000 and EU2000

## NAVIGATION

<b>Compass</b>	Sylva type 100
<b>Electric compass</b>	Radio Holland CP2000 2x HS60 GPS Compass
<b>Depth sounder</b>	Radio Holland ES200 (plus alarm)
<b>Windset</b>	top unit broken Radio Holland WM 2000
<b>VHF</b>	Sailor RT 2048





<b>Autopilot</b>	Radio Holland DAP2000 with Autopilot, Riverpilot end Joystick, Simrad Autopilot AP44 + BT1 remote control
<b>Rudder angle indicator</b>	Radio Holland RI2000 Radio Holland ROT2000 Curve indicator
<b>Radar</b>	Lowrance Halo 24 miles
<b>Weather receiver</b>	WX series Weather station
<b>PC connection</b>	New network and router system as well as server that monitors all functions on board the ship (2021)
<b>Wifi antenna</b>	Full wifi network on board also connected to a remote system to control the yacht when not on board like bilge alarm, turn on the heating or airco, turnig on lights, checking shorepower and chargers etc.
<b>Electronis chart(s)</b>	yes
<b>AIS transceiver</b>	Class A Em-Trat A200 AIS
<b>Radio receiver</b>	Sailor SSB
<b>Camera</b>	Large curved Dell Screen in Pilothouse conneted to 6 camara's overlooking the complete yacht (installed 2021)
<b>Navigation lights</b>	yes
<b>Searchlight</b>	SU210
<b>Loudhailer</b>	Radio Holland IS 2000
<b>Extra info</b>	Hydro alarm Radio Holland AU2000
<b>Extra info</b>	Observator Clinometer

## EQUIPMENT

<b>Cockpit cover</b>	around the cockpit a tent with windows, side's and doorpanels can be removed, gives a beatiful extra space to the salon by opening the 4 doors to the aftdeck (tent installed 2021)
<b>Bimini</b>	seperate bimini for dining table area and for the lounge area (2021)
<b>Window cover</b>	for the windows in the frontcabin
<b>Cockpit cushions</b>	rain proof, quik drying
<b>Cockpit table</b>	teak
<b>Cockpit chairs</b>	yes
<b>Bathing platform</b>	yes



Boarding ladder	stainless steel
Transom door	yes
Gangway	electric hydraulic
Deck shower	on the aftdeck near the transom door, also useable from the bathing platform
Anchor	Pool 2x 125 Kg with protection pads for the hull
Anchor chain	2x 150 meter
Windlass	hydraulic 1x double Maxwell HWVC 3500 hydraulic, refurbished 2022
Capstan	on the aftdeck 2x hydraulic Maxwell 1100
Deck wash	yes
Dinghy	rigid inflatable Grand Marine S330 (2021) with GPS Plotter mounted in console
Outboard	Yamaha 20 HP 4 stroke (2021)
Deck crane	hydraulic On the fly bridge, can lift 500 Kg renovated 2022
Sea railing	stainless steel With massive teak toprail
Life raft	container
Life raft (pers)	6
Last life raft survey	Sea Safe (new 2024)
Danbuoy	2x with safety line and flashlight
Wiper	5x with double arms and window spray replaced 2023 2x Radio Holland SU2015 wiper control
Horn	electric Mario PWZ
Horn cover	yes
Fenders	yes
Mooring lines	yes
Alarm system	yes
TV	LG Flatscreen on lift in salon
Clock - barometer	Schatz Barometer
Fire extinguisher	Fire alarm system Eltek 2LX30
Extinguisher in engine room	2 pcs. FP 5700 Firepro extinguishing system in the engine room, and 1 pc. FP 3000 Firepro extinguishing system in the aft compartment. (to be mounted spring 2025)



## Extra info

dek lightning on the flybridge and for the side and aftdeck



# KEMPERS 2200



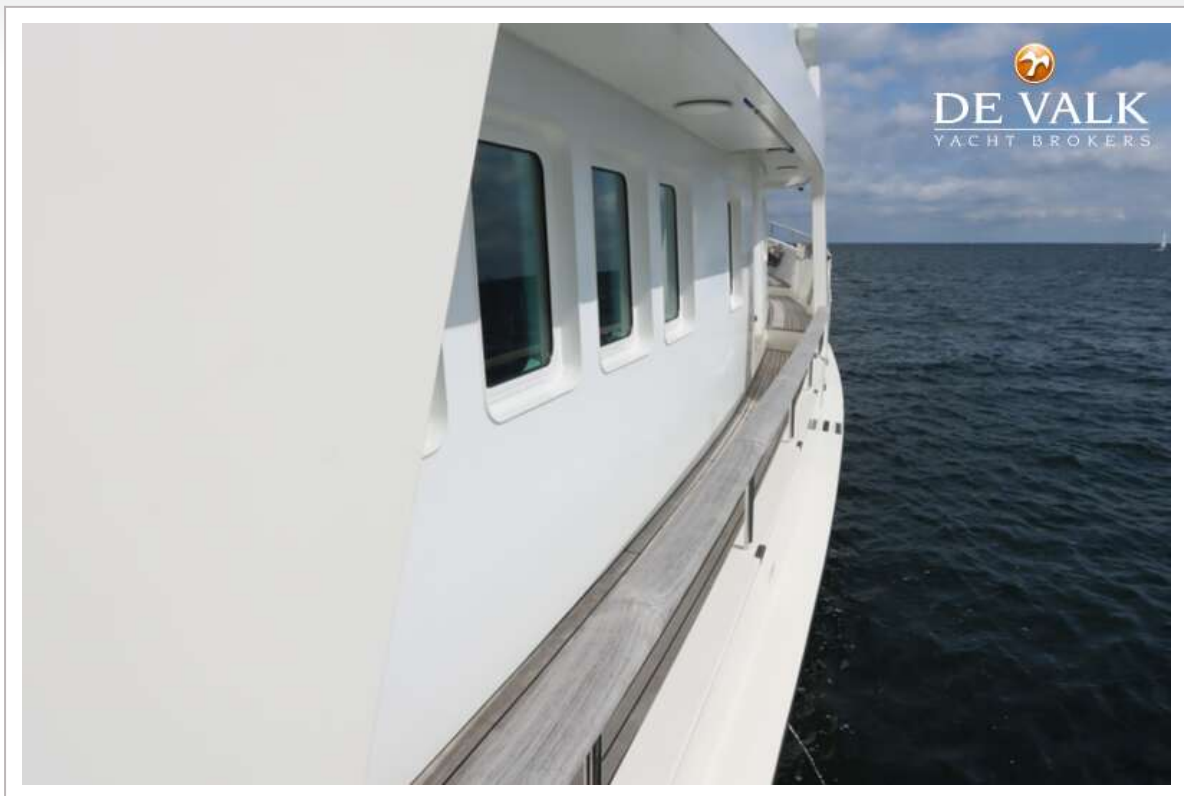
# KEMPERS 2200





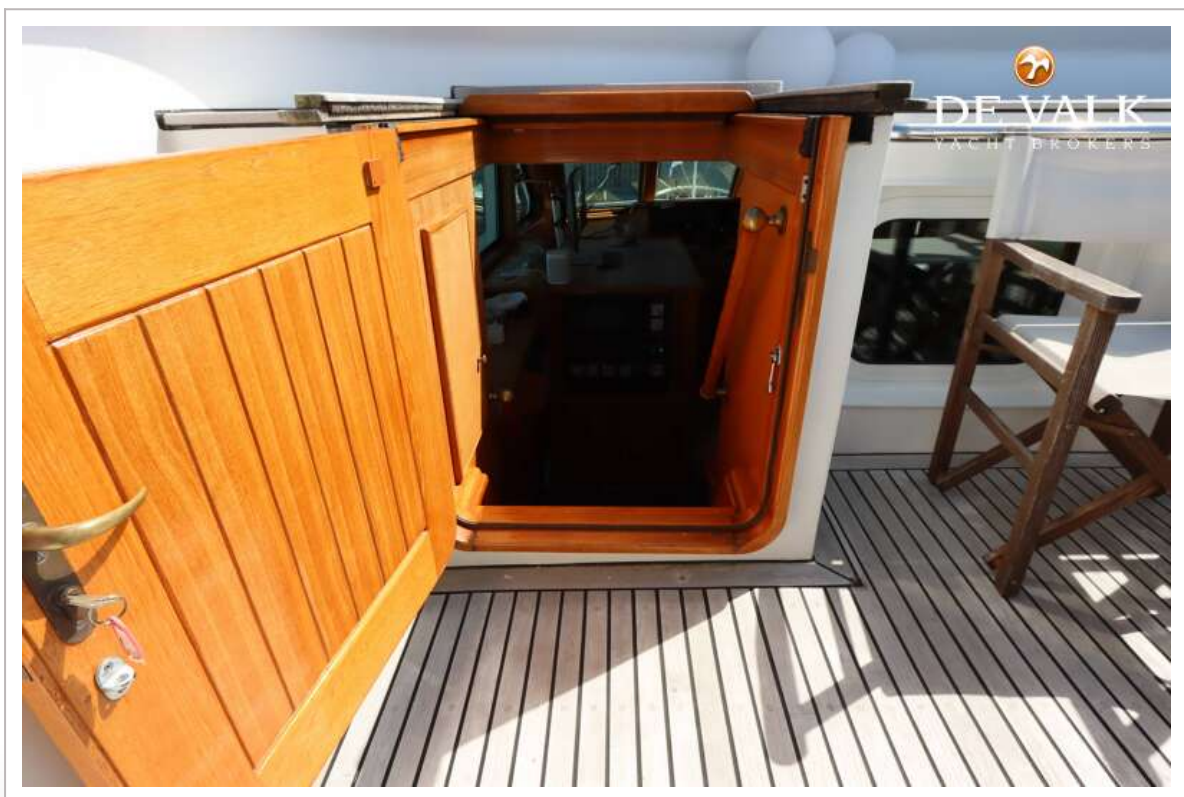
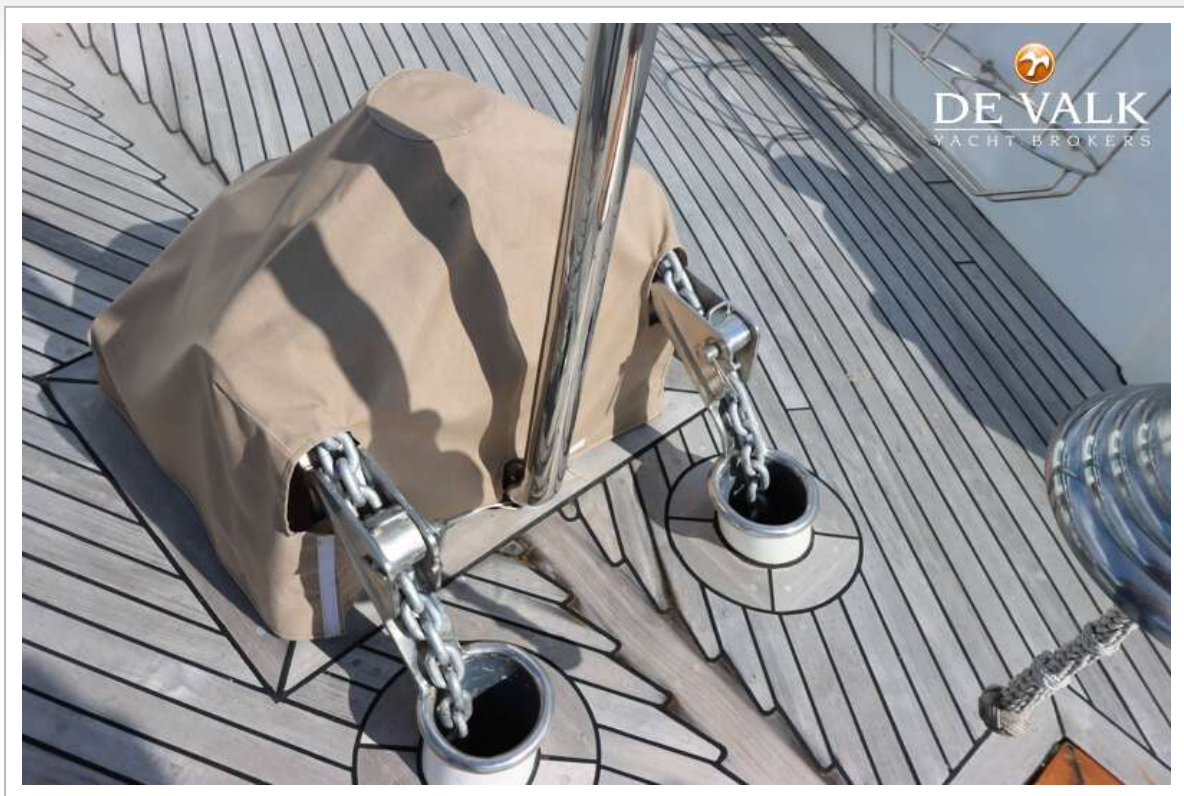
# KEMPERS 2200







# KEMPERS 2200





# KEMPERS 2200

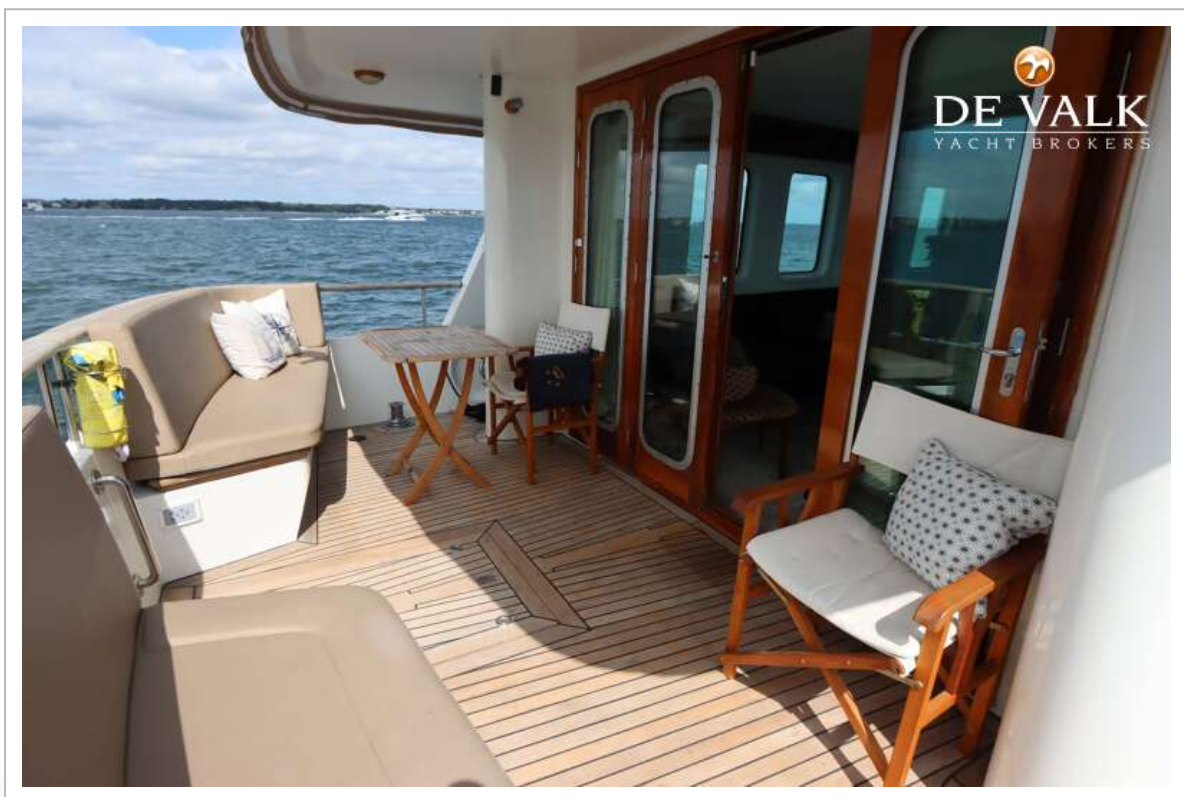
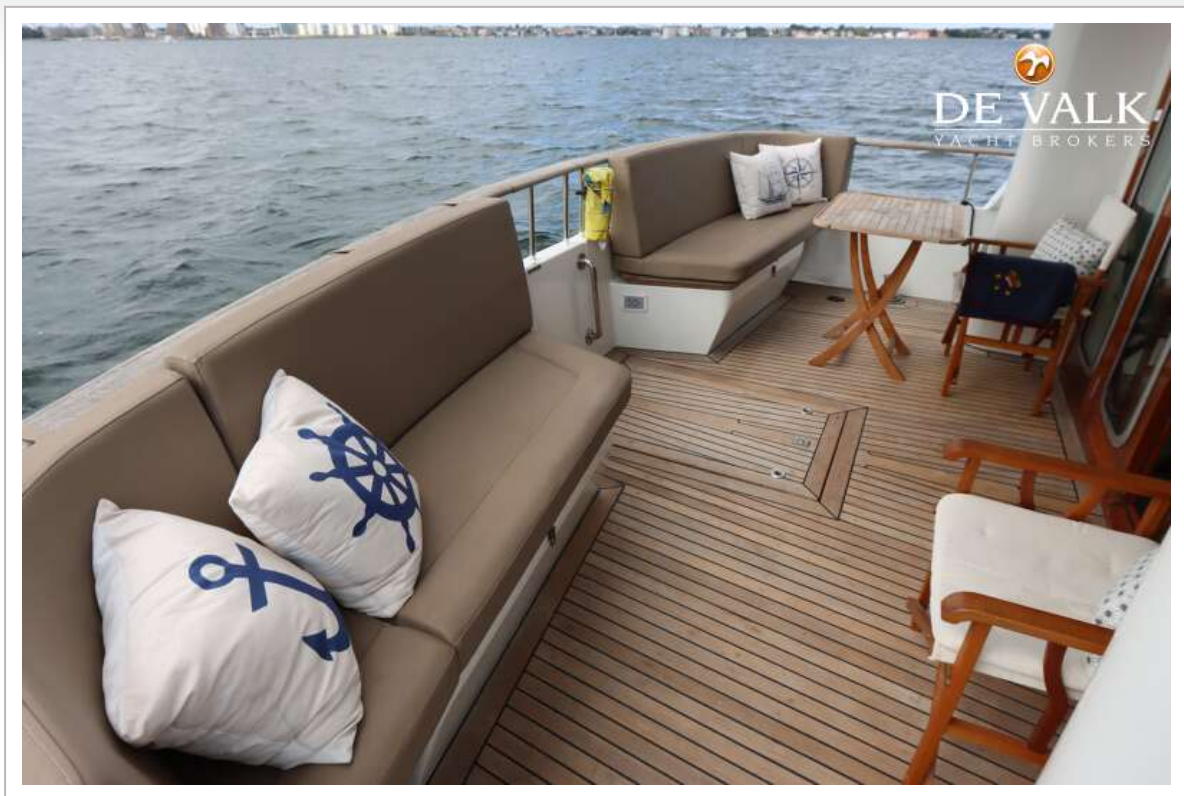


# KEMPERS 2200





# KEMPERS 2200

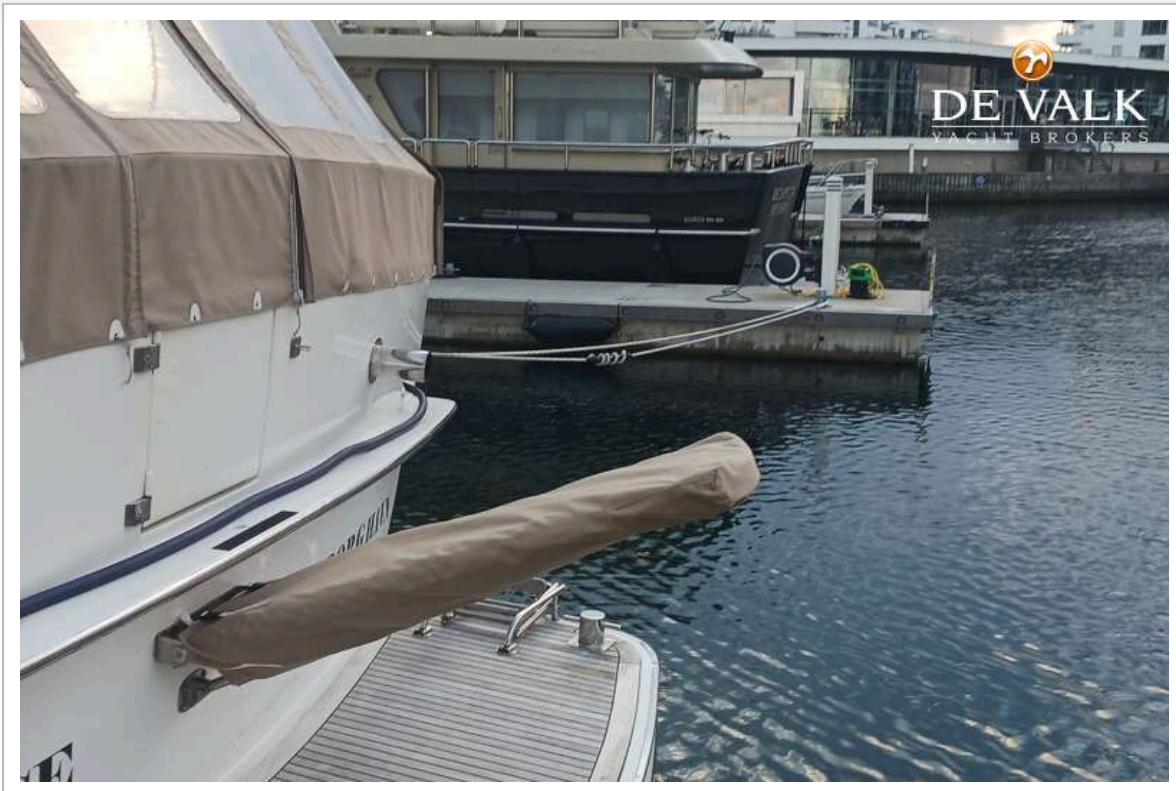


# KEMPERS 2200

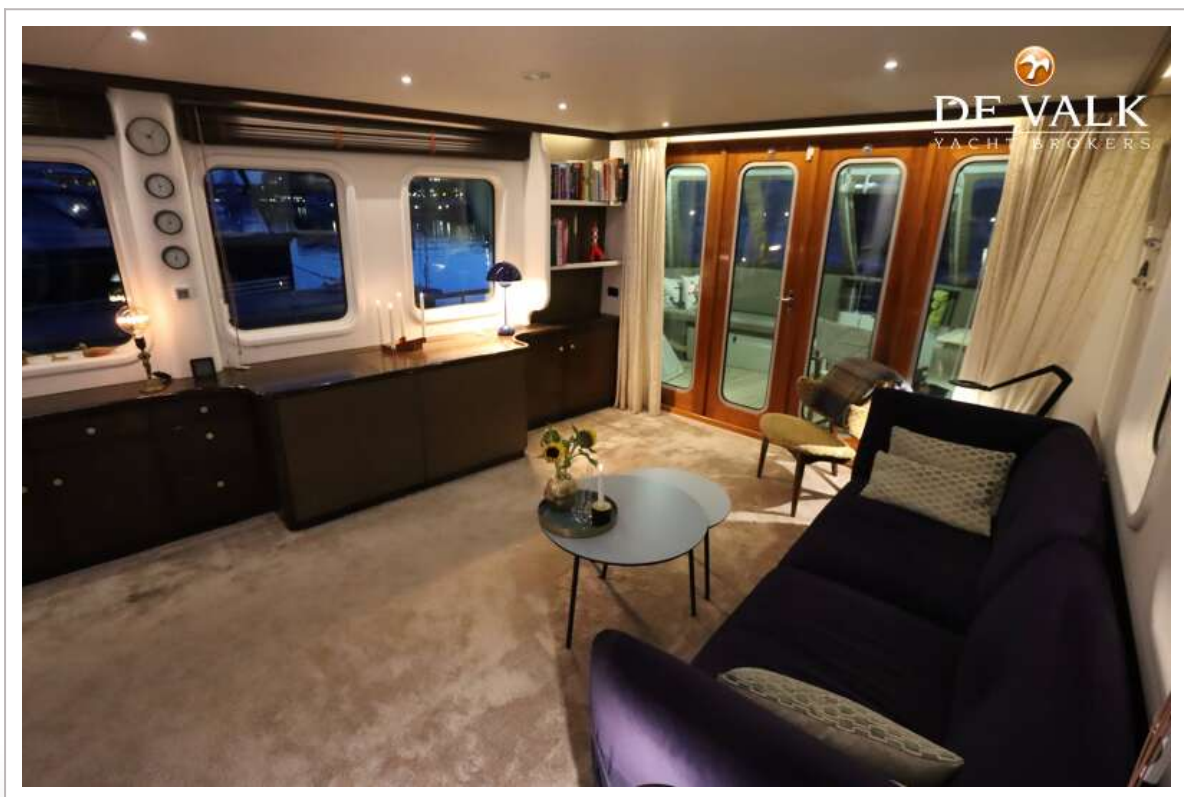
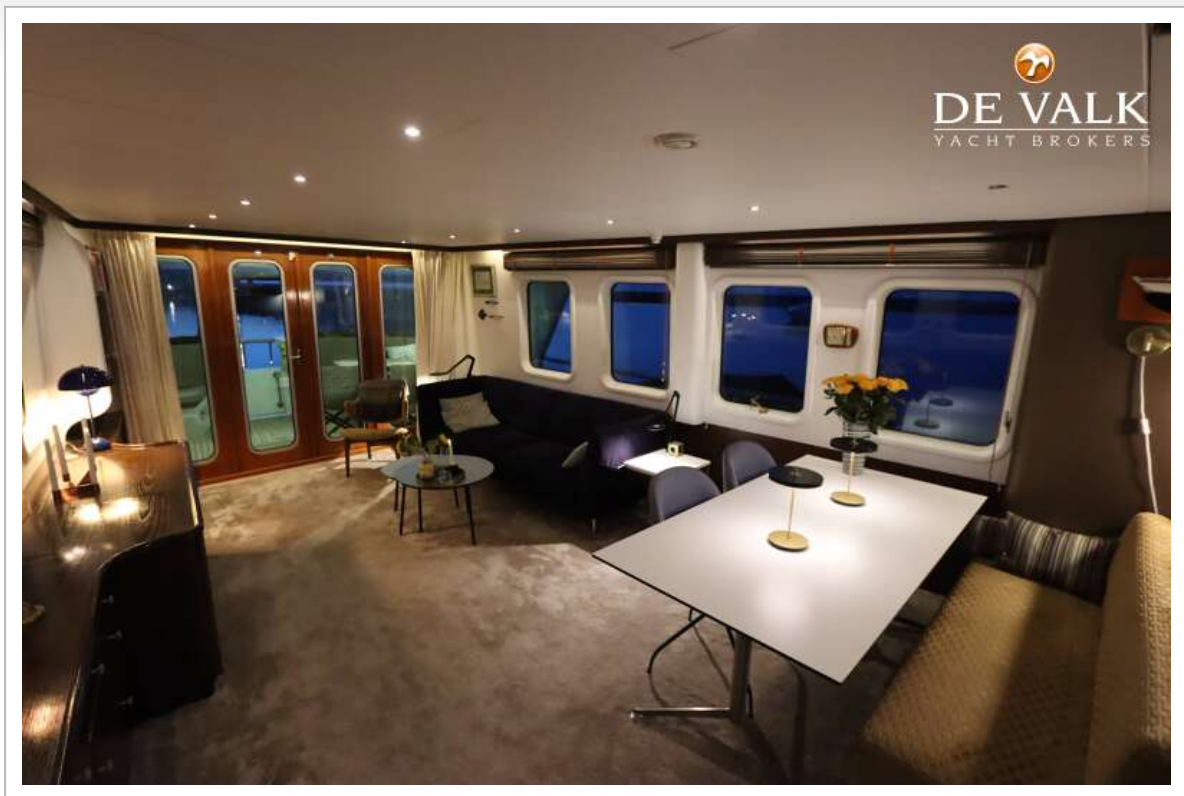




# KEMPERS 2200



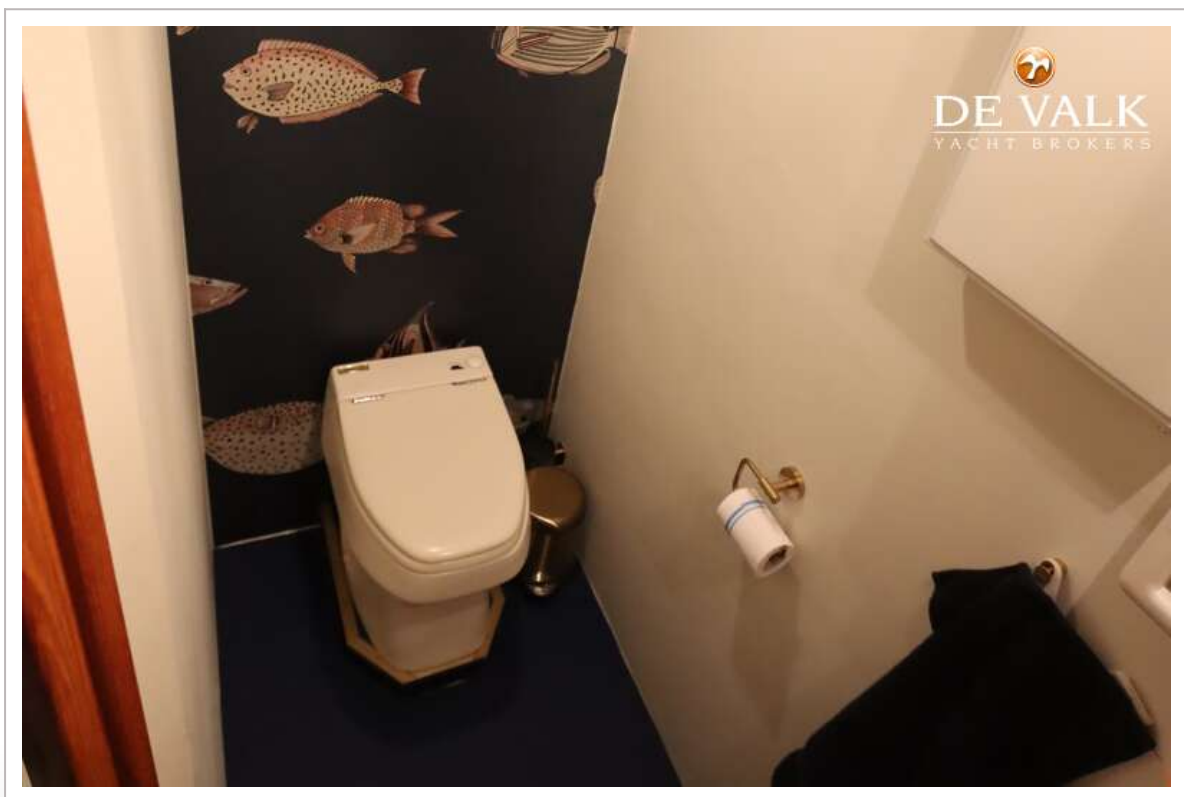
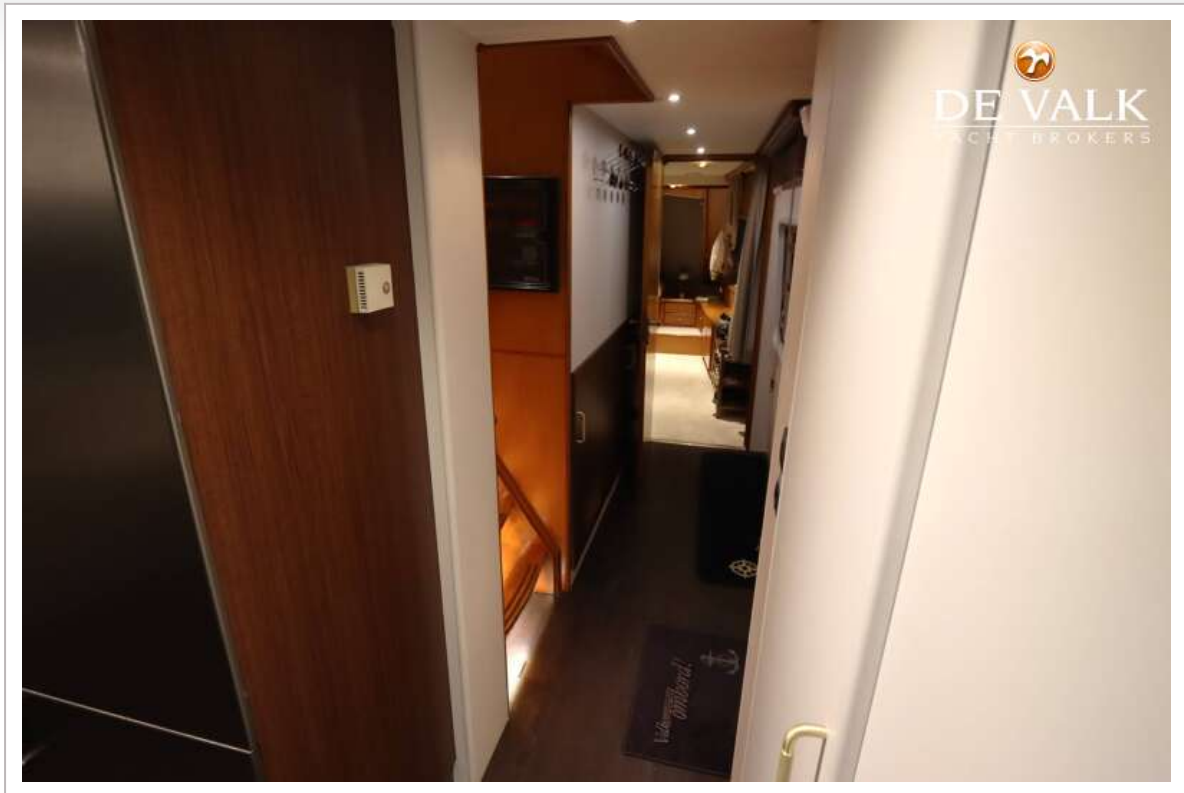
# KEMPERS 2200





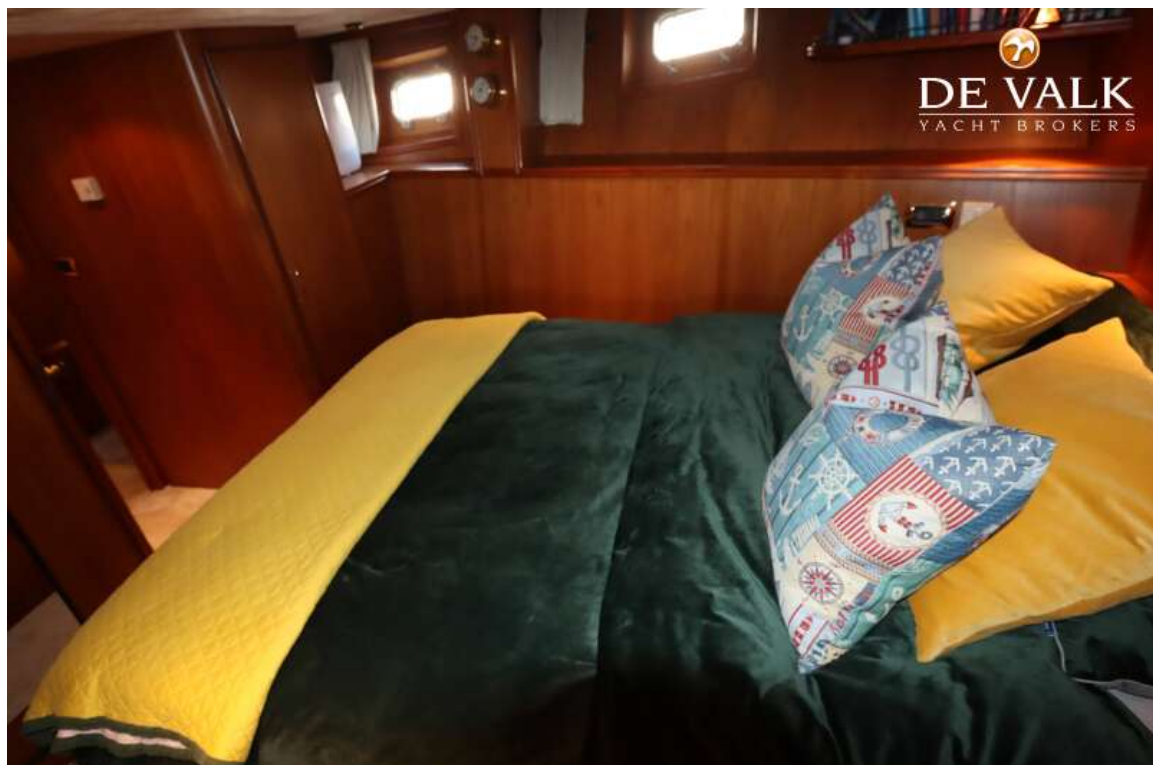
# KEMPERS 2200



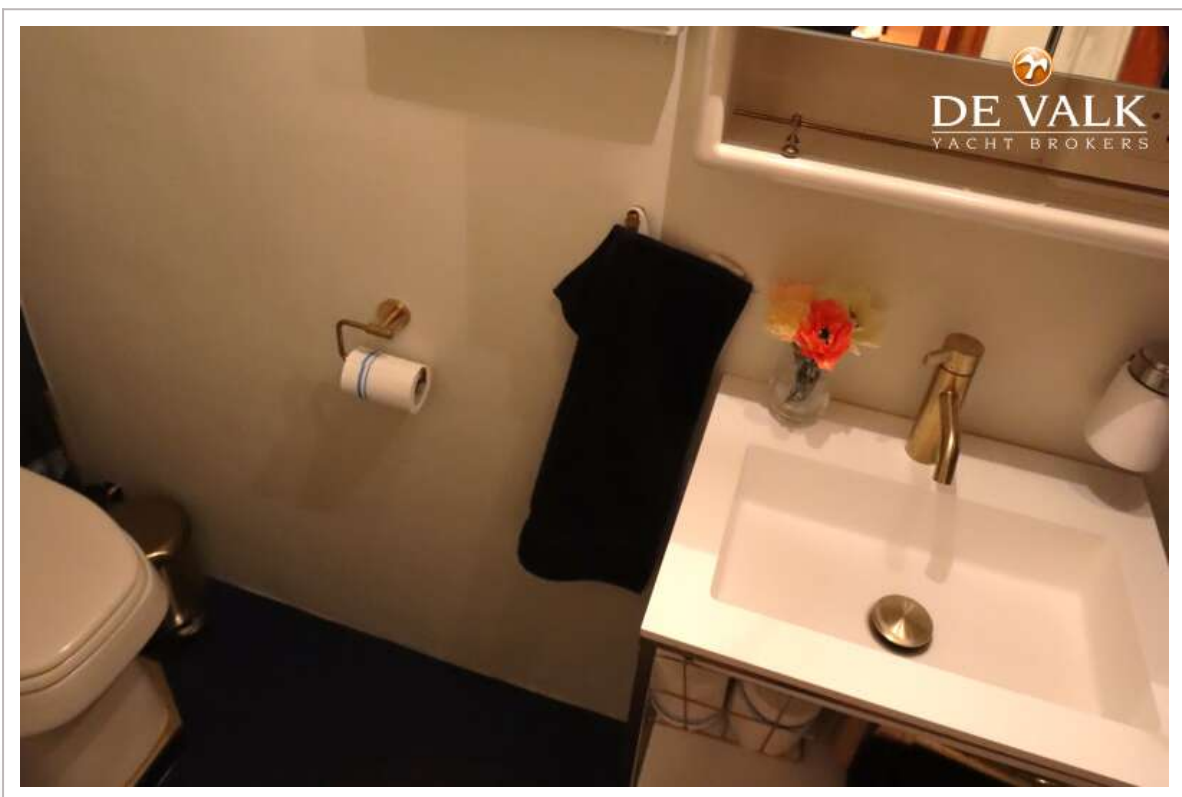
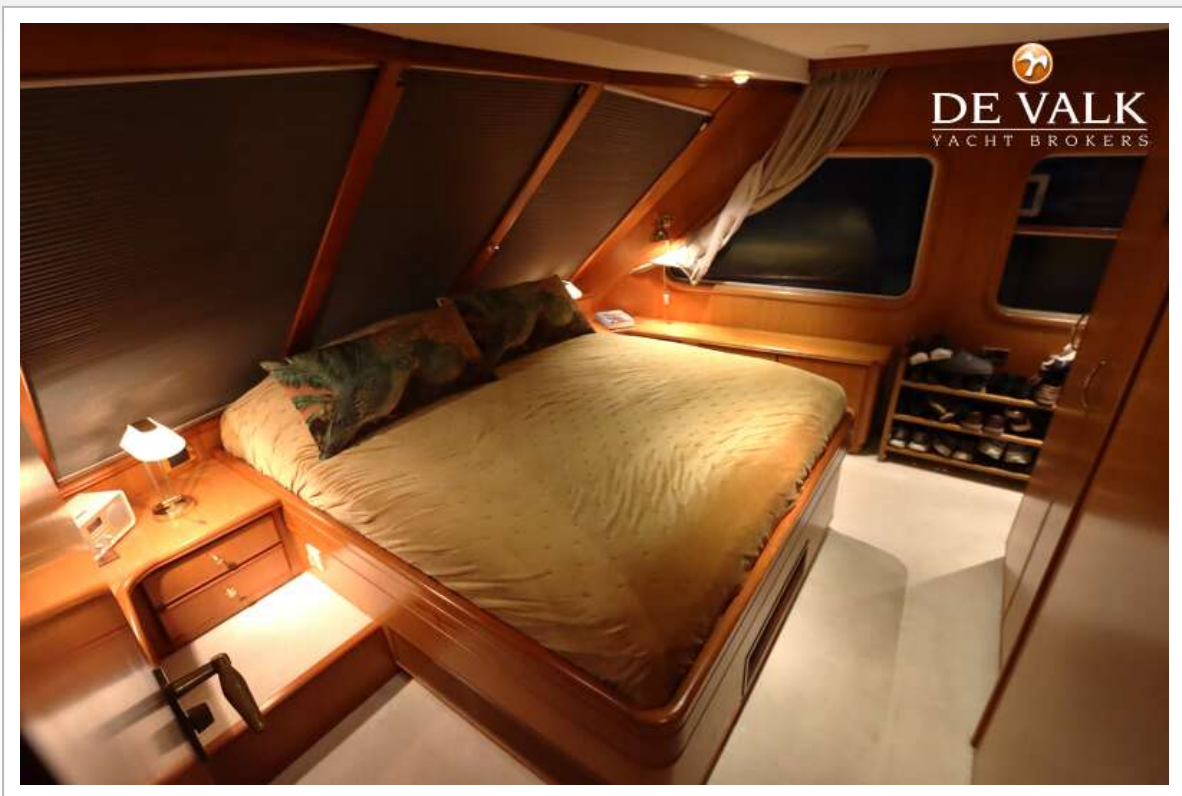




# KEMPERS 2200

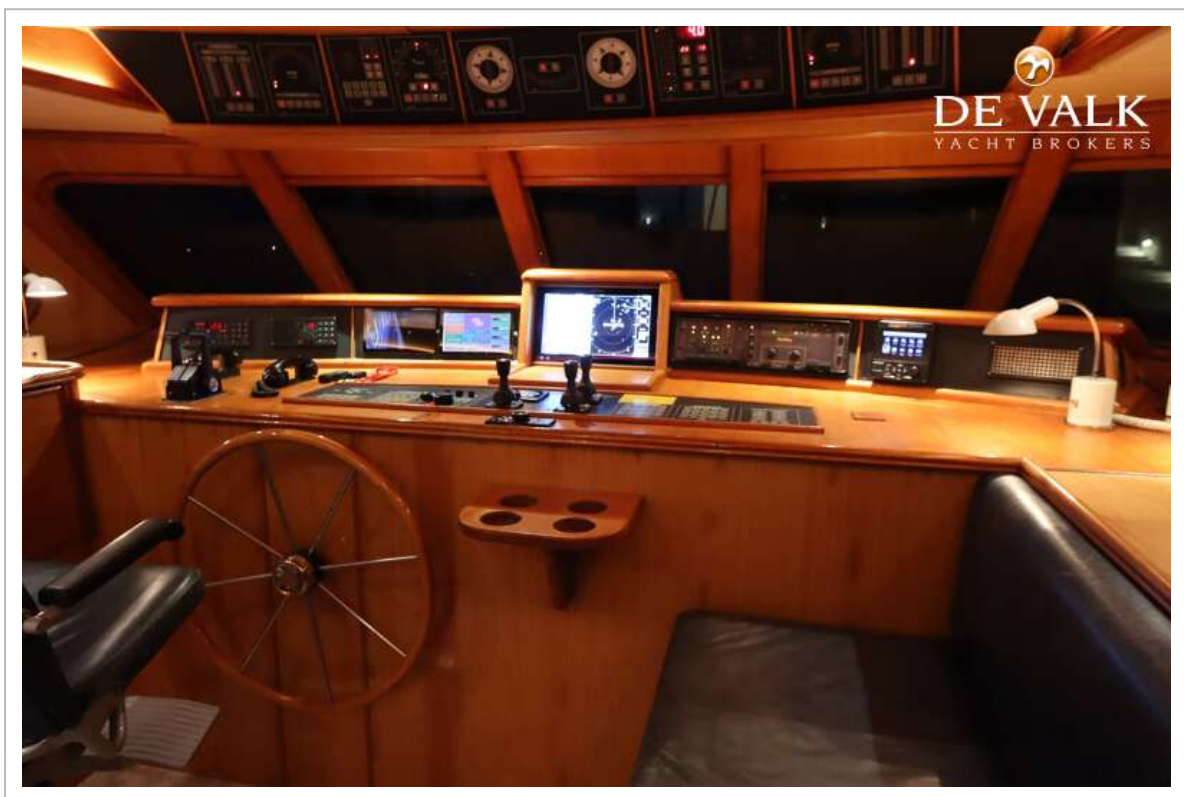
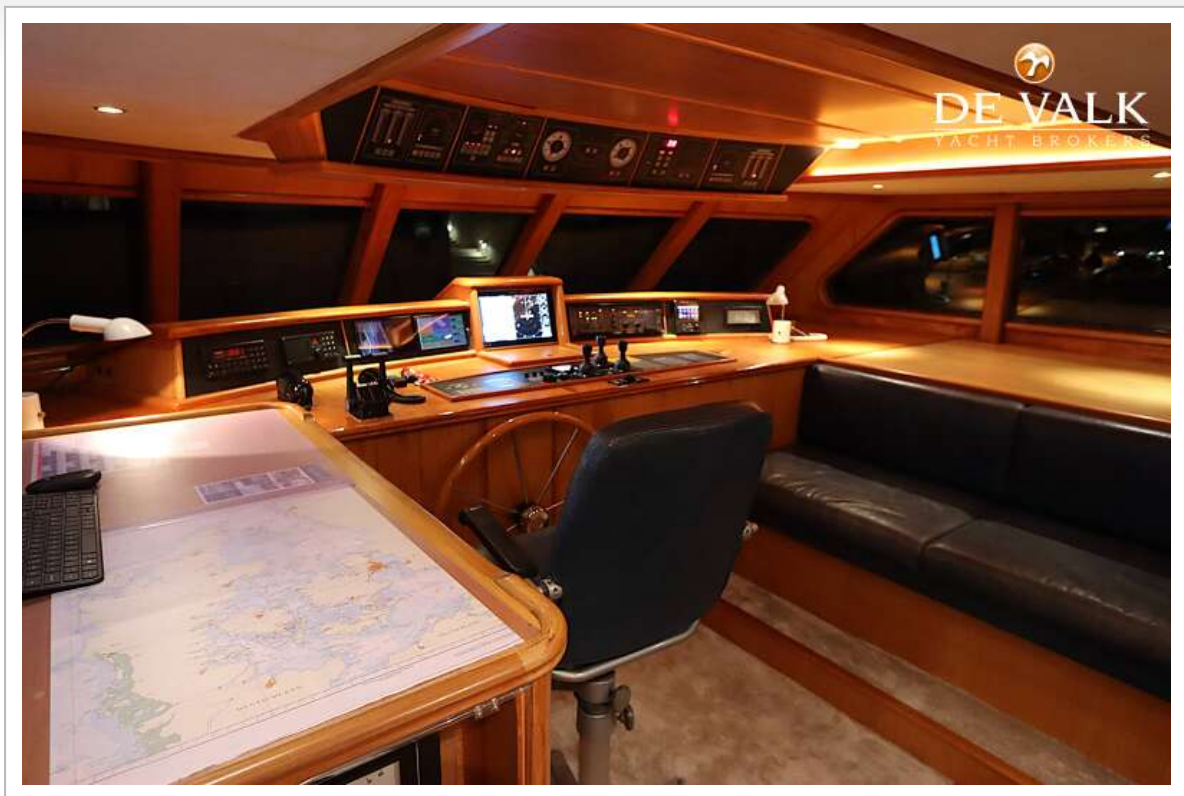


# KEMPERS 2200

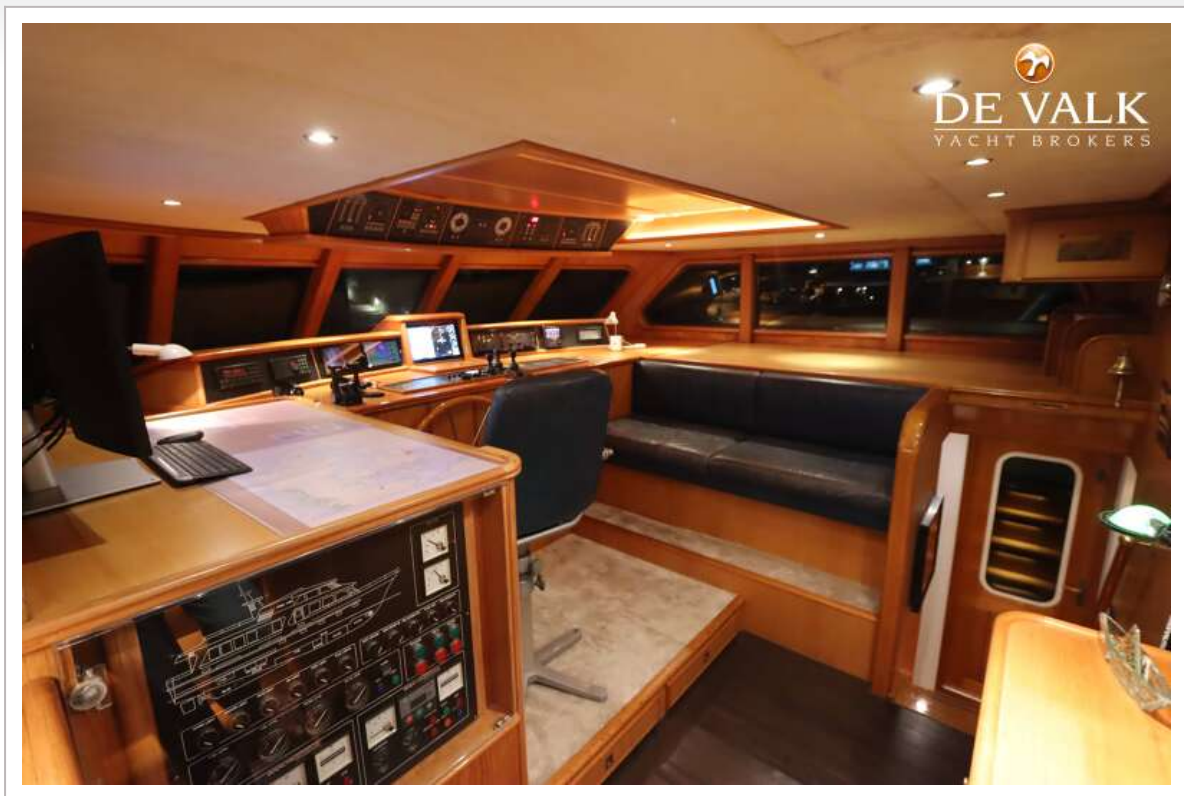




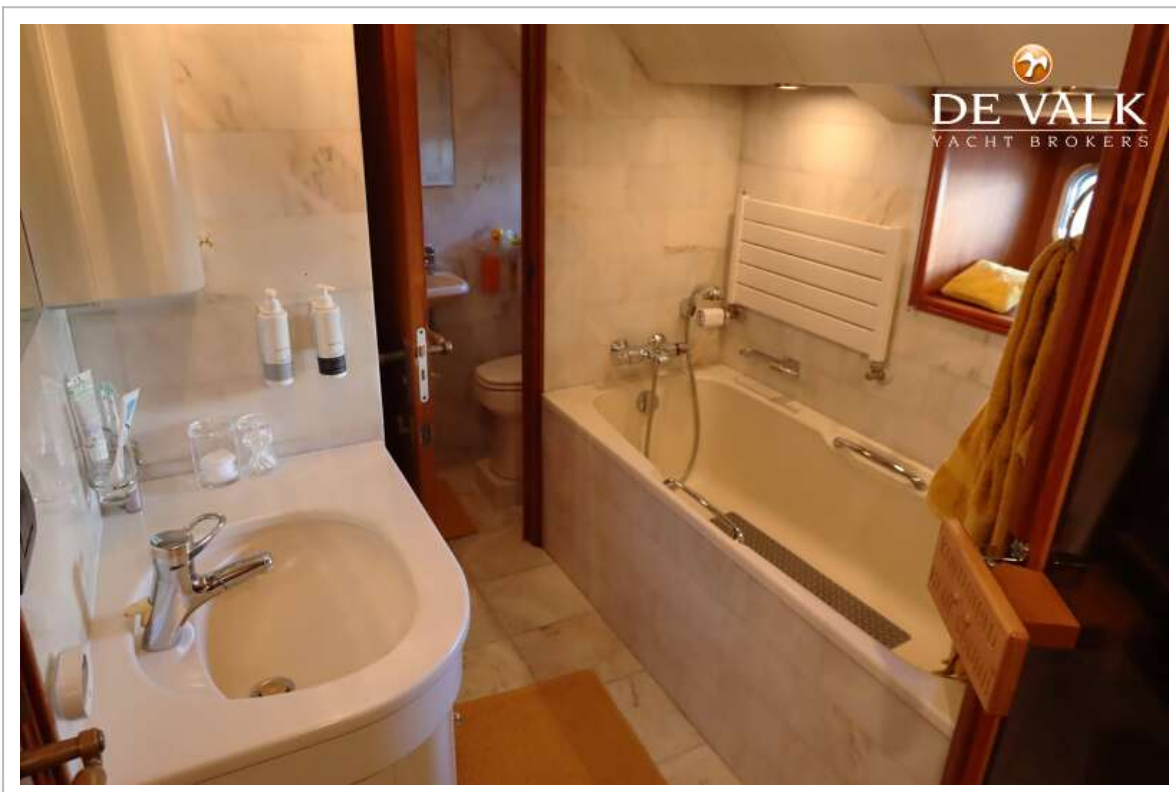
# KEMPERS 2200



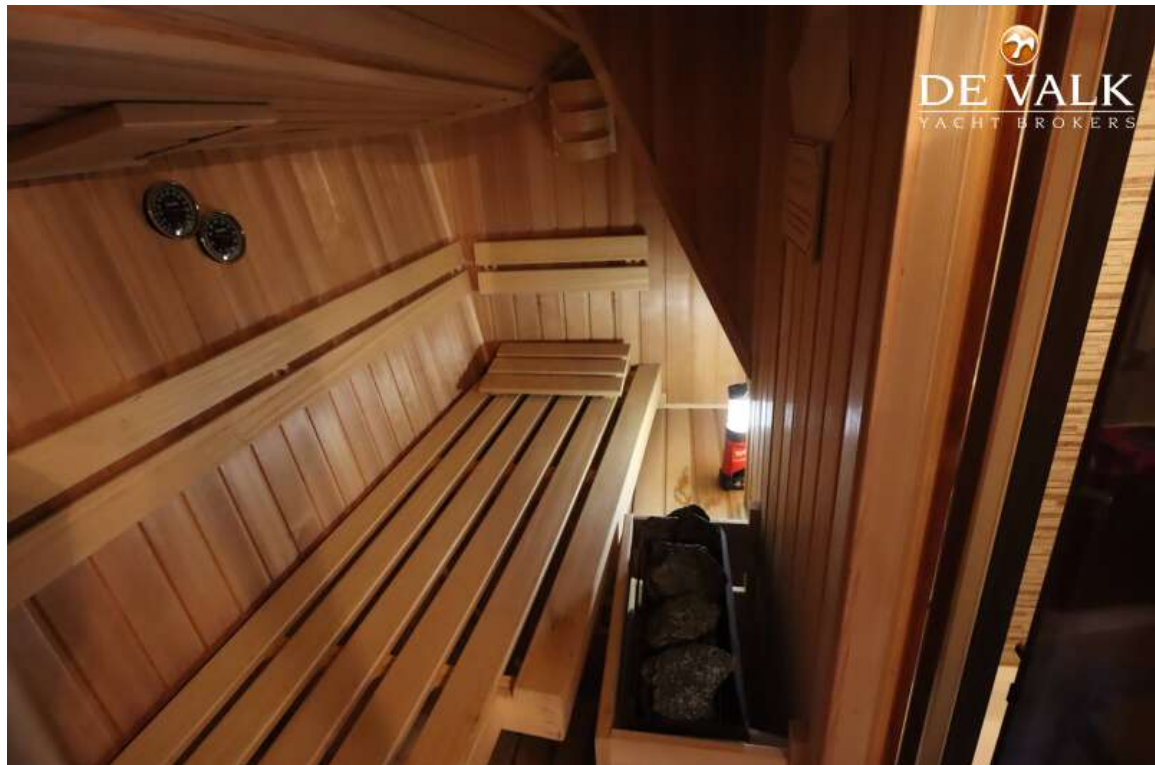
# KEMPERS 2200



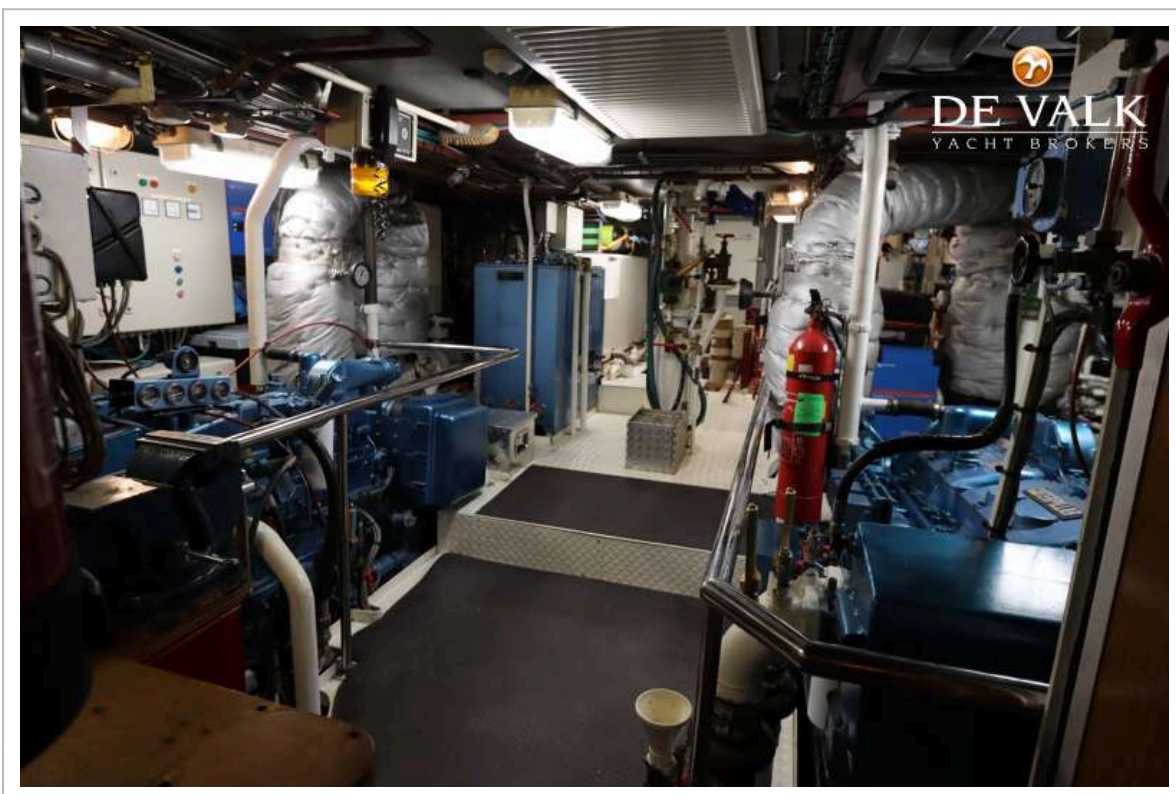


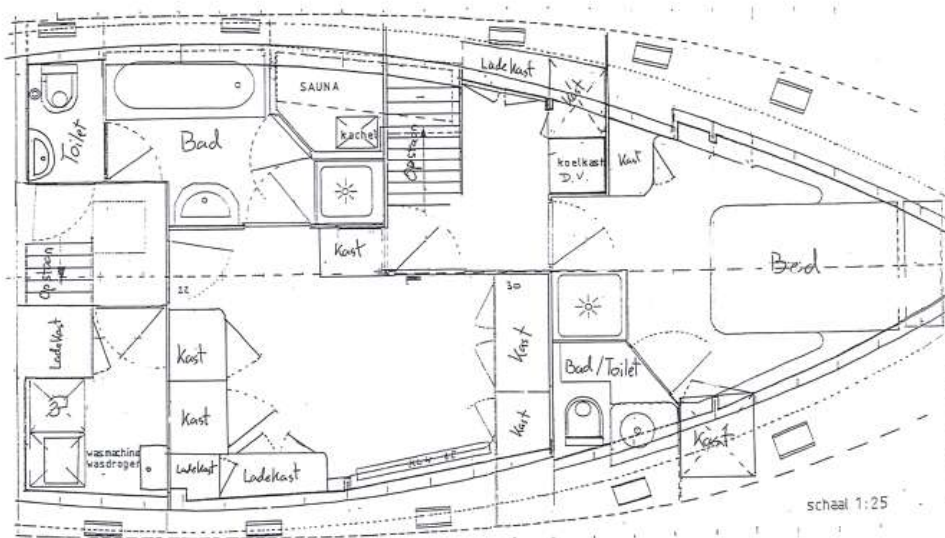
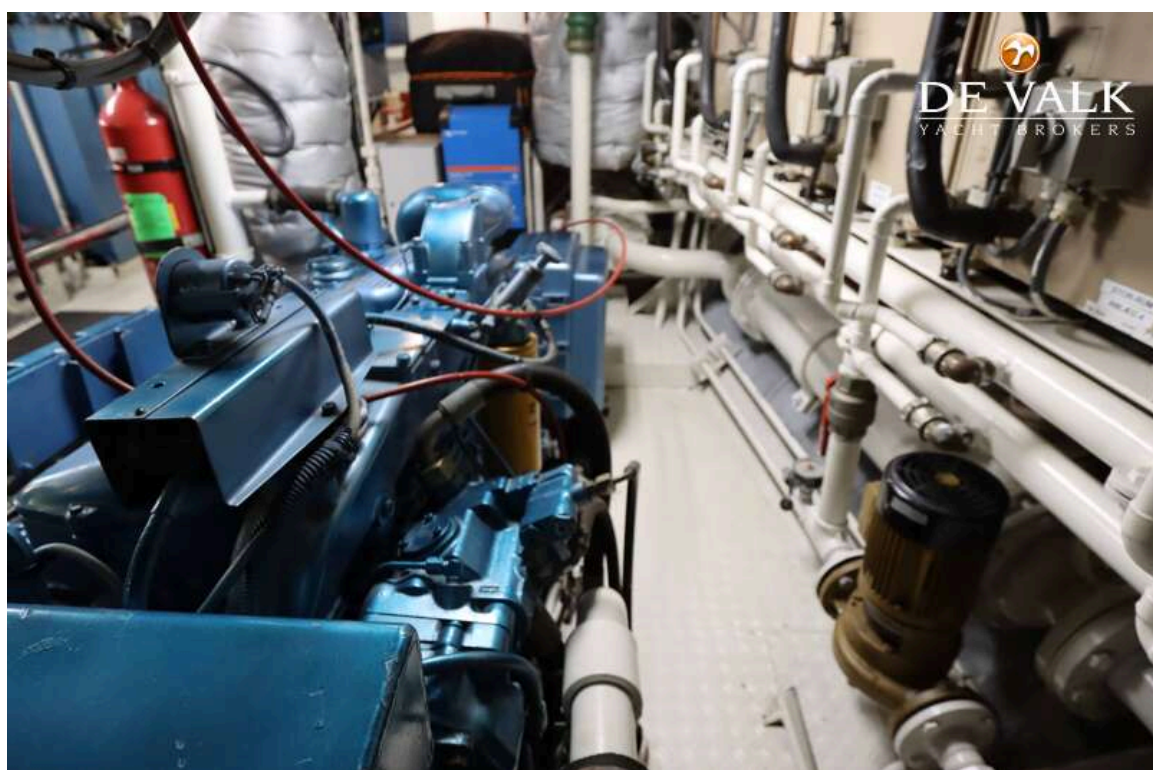


# KEMPERS 2200









Floorplan lower level guestcabin walkin bathroom





