



DE VALK

YACHT BROKERS



SARGO 33 EXPLORER



DE VALK
YACHT BROKERS

SARGO 33 EXPLORER

BROKER'S COMMENTS

Brands like Minor/Sargo are recognized to be the trendsetters for strong and impressive offshore “all weather motor yachts”. Many followed suit like Botnia and such. They all aim at the high demands of the discerning yachtsman that wants to safely go “anywhere-anytime”. The Sargo 33 has two separate cabins, two bathrooms and 360 view in the deck salon with 3 door access to her decks and cockpit. The well designed walk around single-level deck with a high freeboard guarantees safety on board. Such is this compact Sargo 33, a pleasant ride that radiates sportiness, safety and comfort.

Marc Weijenberg

SPECIFICATIONS

Dimensions	10.99 x 3.45 x 1.10 (m)	Builder	Sargo Boats Oy Ab
Built	2016	Cabins	2
Material	GRP	Berths	5
Engine(s)	2 x Volvo Penta D6-330 diesel	Hp/Kw	2 x 330.00 (hp), 242.88 (kw)
Asking price	sold (VAT)	Lying	The Netherlands

CONTACT

Sales office	De Valk Thuishaven	Telephone	+31 35 5829042
Address	Peperstraat 7 1411 PX Naarden NL	E-mail	thuishaven@devalk.nl

DISCLAIMER

These particulars are given in good faith as supplied but cannot be guaranteed.



SARGO 33 EXPLORER

GENERAL

Model	SARGO 33 EXPLORER
Type	motor yacht
LOA (m)	10,99
Beam (m)	3,45
Draft (m)	1,10
Air draft (m)	3,10
Air draft min (m)	4,10
Headroom (m)	2,05
Year built	2016
Builder	Sargo Boats Oy Ab
Country	Finland
Designer	Sarin & Ilmanen
Displacement (t)	7,2
CE norm	B
Hull material	GRP
Hull colour	antracite gray
Hull shape	deep-V
Superstructure material	GRP
Rubbing strake	rubber
Deck material	GRP
Deck finish	non-skid moulded in
Cockpit deck finish	non-skid moulded in
Window frame	aluminium
Window material	tempered glass
Deckhatch	with roller blinds/mosquito gauze
Portholes	aluminium Muggenhorren
Mast can be lowered	manual
Fuel tank (litre)	aluminium 800
Level indicator (fuel tank)	yes
Freshwater tank (litre)	aluminium 260



SARGO 33 EXPLORER

Level indicator (freshwater)	yes
Blackwater tank (litre)	aluminium 100
Level indicator (blackwater)	yes
Blackwater tank extraction	deck extraction + pump
Wheel steering	hydraulic
More info on paintwork	yes
Extra info	height above the waterline; 3,10 mtr lowest, 3,35mtr including radar, 4,10mtr with mast up.

ACCOMMODATION

Cabins	2
Berths	5
Interior	mahogany
Floor	Teak - holley plus carpet
Open cockpit	with seats, cushions and cockpit table
Pilot house/deck saloon	with adjustable helmseat and steeringpedestal
Headroom saloon (m)	2,05
Sliding roof	manual
Heating	diesel ducted hot air Webasto Airtop Evo 55
Aft Cabin	under the salon dinette seating
Dinette to convert into berth	2,00 x 1,05 mtr, electric adjustable table
Sliding door to cockpit	and sliding doors port and starboard at the helmstation to access deck area
Galley	with fold-open worktop
Sink	stainless steel 2 x
Cooker	calor gas Eno 3 pits
Oven	Eno
Fridge	with freezer compartment Waeco
Hot water system	220V + engine
Water pressure system	yes
Owners cabin	v-bed



SARGO 33 EXPLORER

Bed length (m)	2,00 x 0,88 mtr, headroom 1,90 mtr, with fill in cushion for extra width
Wardrobe	hanging and shelves
Bathroom	en suite
Toilet	en suite
Toilet system	electric
Wash basin	in the bathroom
Shower	en suite
Guest cabin 1	twin single
Bed length (m)	2,00 x 0,85 mtr, with fill in 2,00 x 2,00 mtr, headroom 1,80mtr
Wardrobe	hanging and shelves
Toilet	en suite
Toilet system	electric

MACHINERY

No of engines	2
Make	Volvo Penta
Type	D6-330
HP	330
kW	242.88
Fuel	diesel
Year installed	2016
Maximum speed (kn)	36
Cruising speed (kn)	6,5
Consumption (l/hr)	8
Engine hours	790
Engine cooling system	freshwater heat exchanger
Drive	Z-drive
Engine controls	electrical Volvo Penta ËVC
Gearbox	mechanical Volvo Penta DPH-D1 drives + duoprop (fully serviced)
Bowthruster	electric Sidepower



SARGO 33 EXPLORER

Sternthruster	electric Sidepower
Exhaust	watercooled
Propeller type	2 x Volvo Penta Duoprop
Shaft lubrication	oilbath
Manual bilge pump	1 x
Electric bilge pump	2 x
Electrical installation	12v/220v
Start battery	2 x
Service battery	3 x
Bowthruster battery	1 x
Battery monitor	Victron
Battery charger	Mastervolt 12v/25amp/3
Battery charger/inverter	Victron Multiplus 12v/3000watt/120amp
Solar panel	2 x with voltage regulators
Shorepower	with cable
Trimtabs	Mente Marine auto trim system
Extra info	gasdetector

NAVIGATION

Compass	Ritchie
Electric compass	via autopilot
Depth sounder	Garmin
Log	Garmin
VHF	Garmin 11i
Autopilot	Garmin
Radar	Garmin XhD
GPS	Garmin
Plotter	Garmin 2 x GPSmap 7412xsv, multidisplays
Electronic chart(s)	NL + Baltic Sea (up to Norway) updated 2024
AIS transponder	Garmin
Navigation lights	yes



SARGO 33 EXPLORER

Searchlight	LED lightbar + remote light
Extra info	Echomax Active X-band radar alarm, aft looking camera

EQUIPMENT

Bimini	(2023)
Cockpit cushions	yes
Cockpit table	with "high-low" leg set for creating a sunbed
Bathing platform	yes
Boarding ladder	stainless steel
Transom door	yes
Bow ladder	yes
Anchor	Delta
Anchor chain	Stainless
Anchor 2	FOB with chain & line
Windlass	electrical Quick 12v (+ remote)
Sea railing	stainless steel
Grab rail (superstructure)	stainless steel
Railing side opening gates	1 x STB
Pushpit	yes
Pulpit	yes
Life raft	container Plastimo Cruiser 6
Life raft (pers)	6 persons
Last life raft survey	valid till 10-2024
Lifebuoy	yes
Wiper	3 x
Window heating	yes
Horn	electric
Fenders	yes
Mooring lines	yes
TV	Samsung (fold-down in salon)
Radio-cd player	yes



SARGO 33 EXPLORER

Speakers in salon	yes
Fire extinguisher	1 x (last service 2022)
Extinguisher in engine room	1 x (last service 2022)
Extra info	Covers for cockpit seats and table. Bow docking lights



SARGO 33 EXPLORER



SARGO 33 EXPLORER



SARGO 33 EXPLORER



SARGO 33 EXPLORER



SARGO 33 EXPLORER



SARGO 33 EXPLORER



SARGO 33 EXPLORER



SARGO 33 EXPLORER



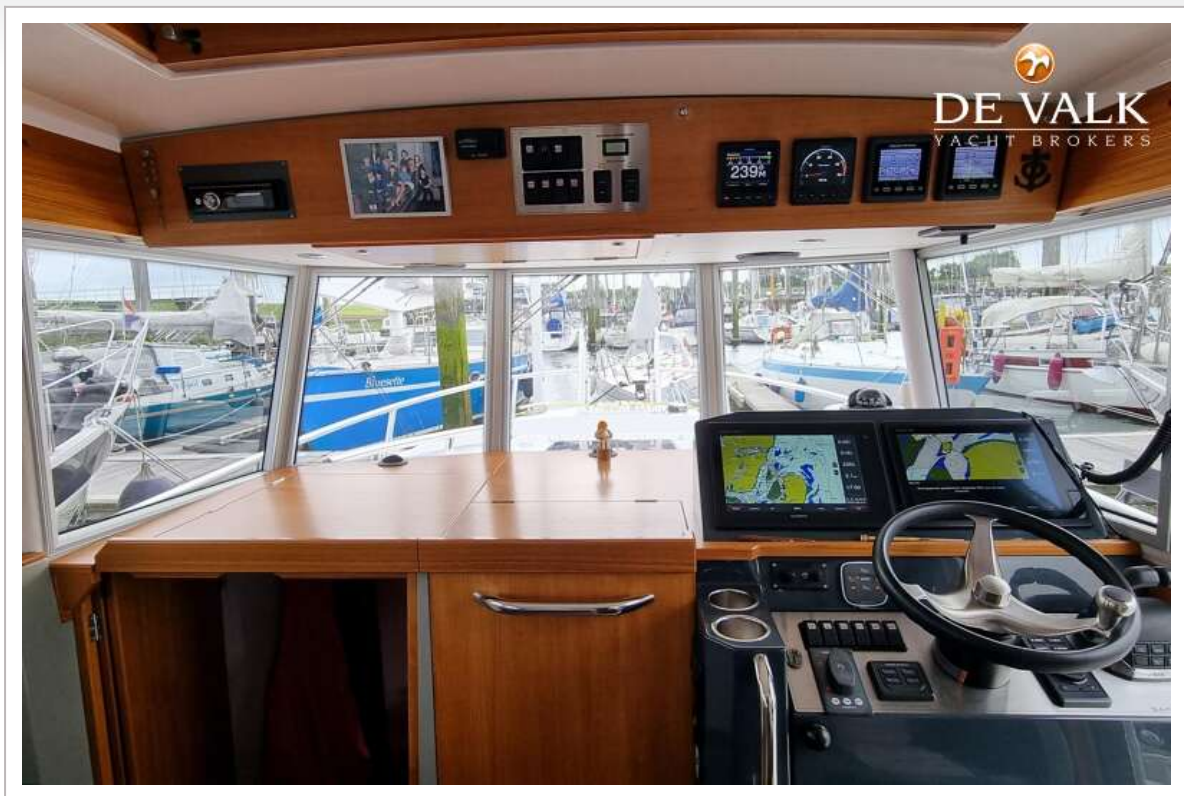
SARGO 33 EXPLORER



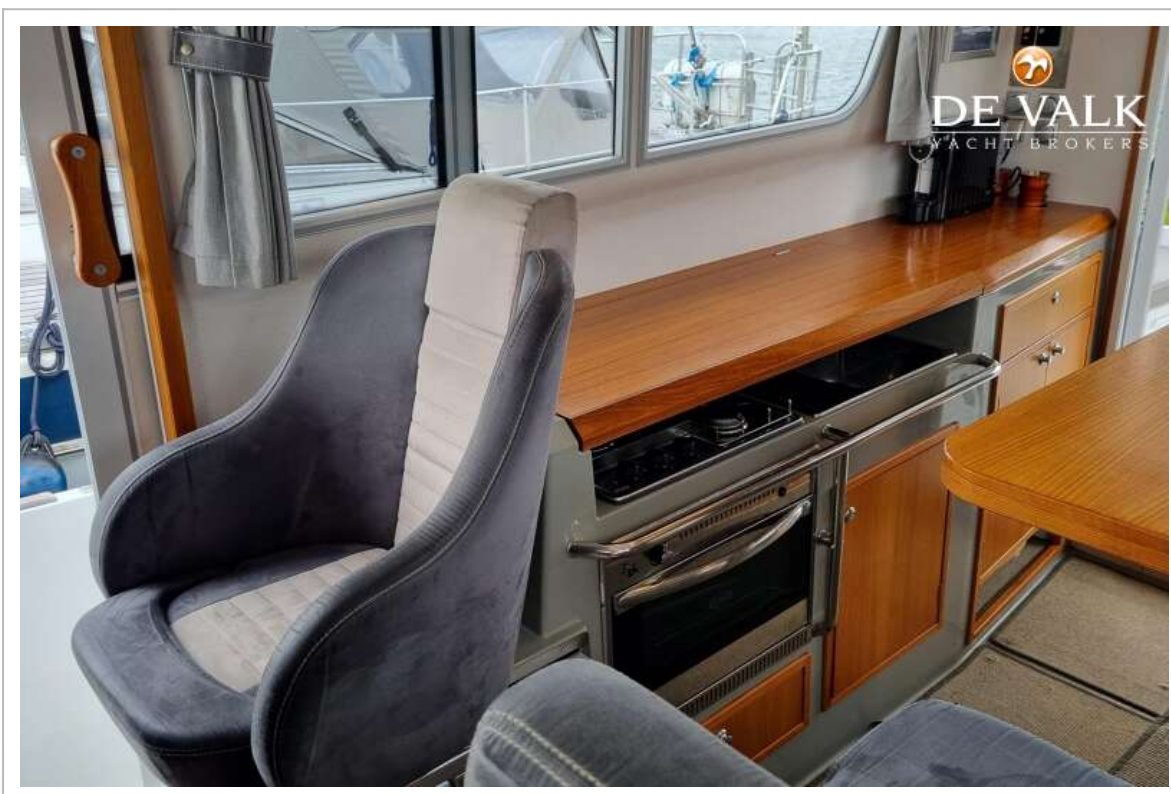
SARGO 33 EXPLORER



SARGO 33 EXPLORER



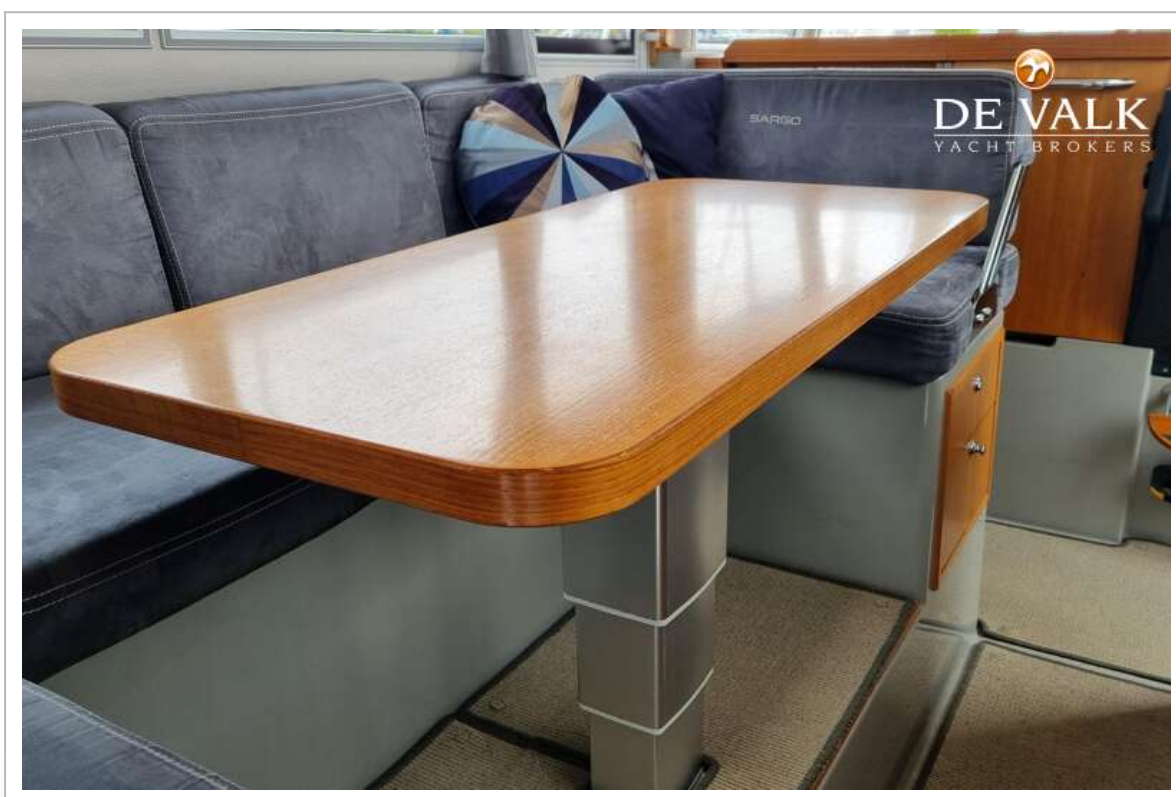
SARGO 33 EXPLORER



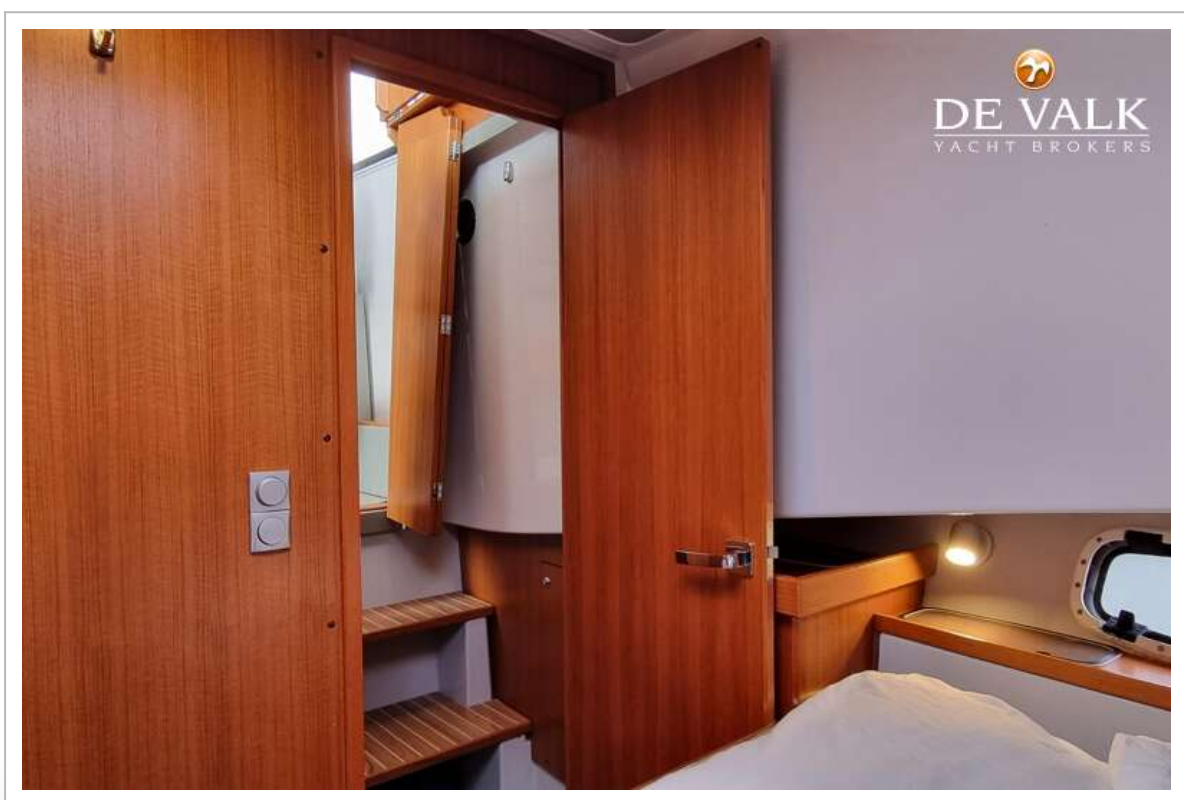
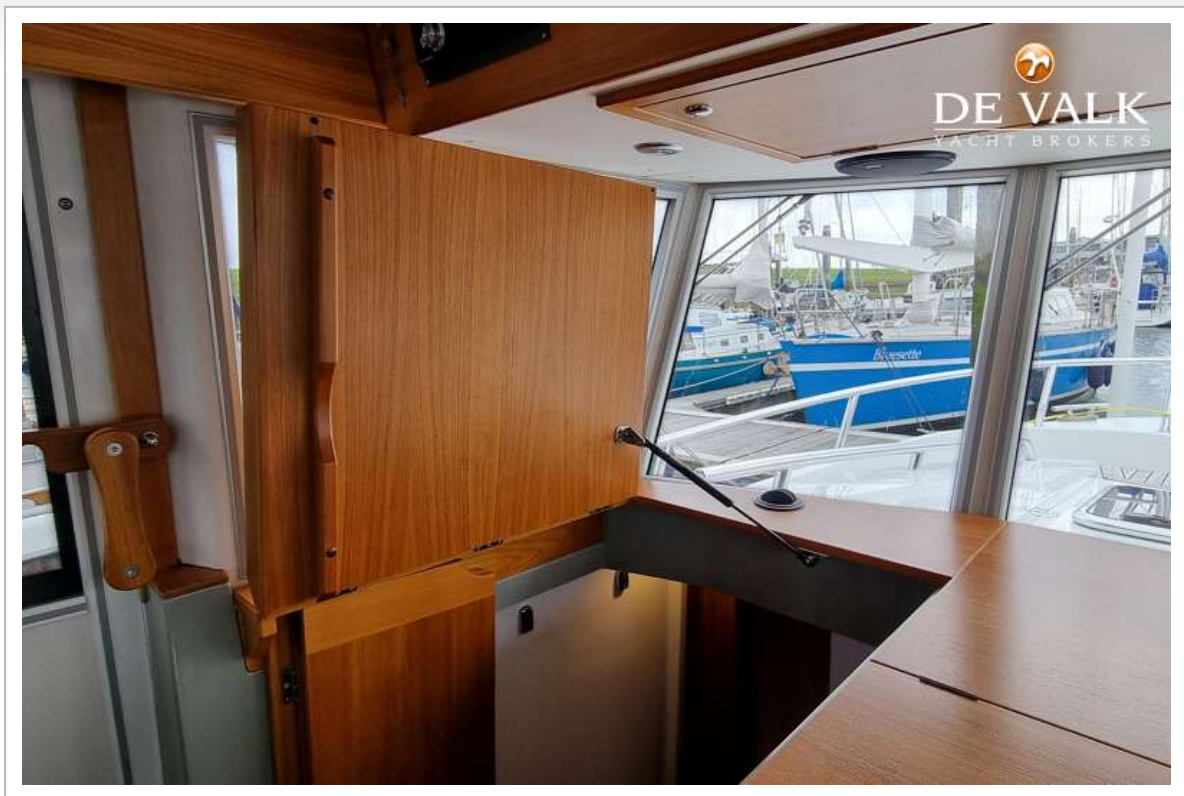
SARGO 33 EXPLORER



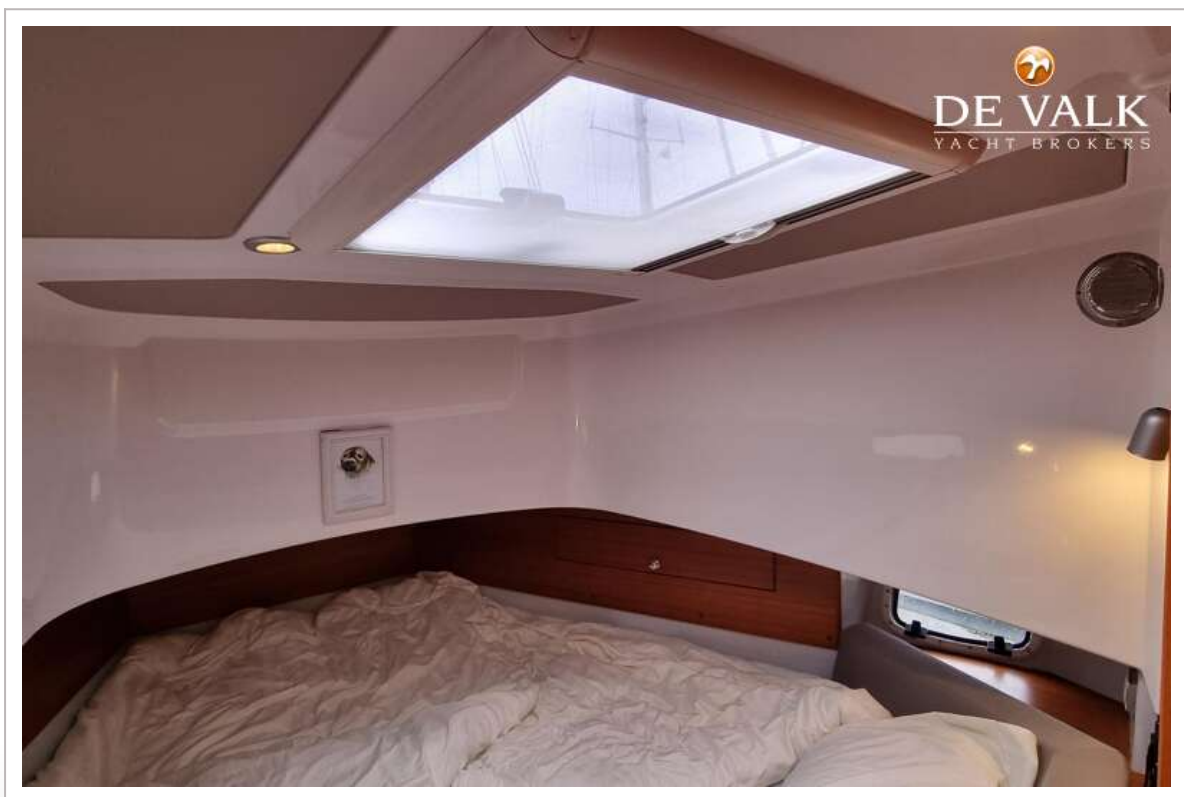
SARGO 33 EXPLORER



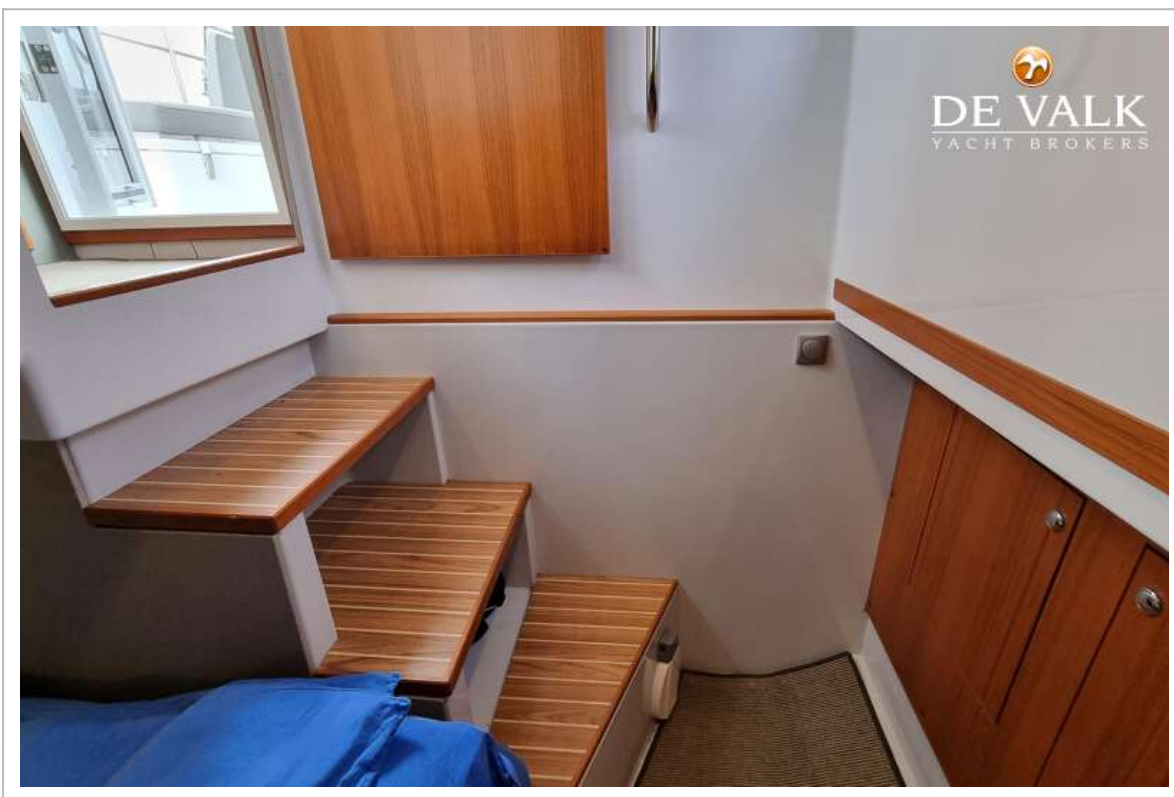
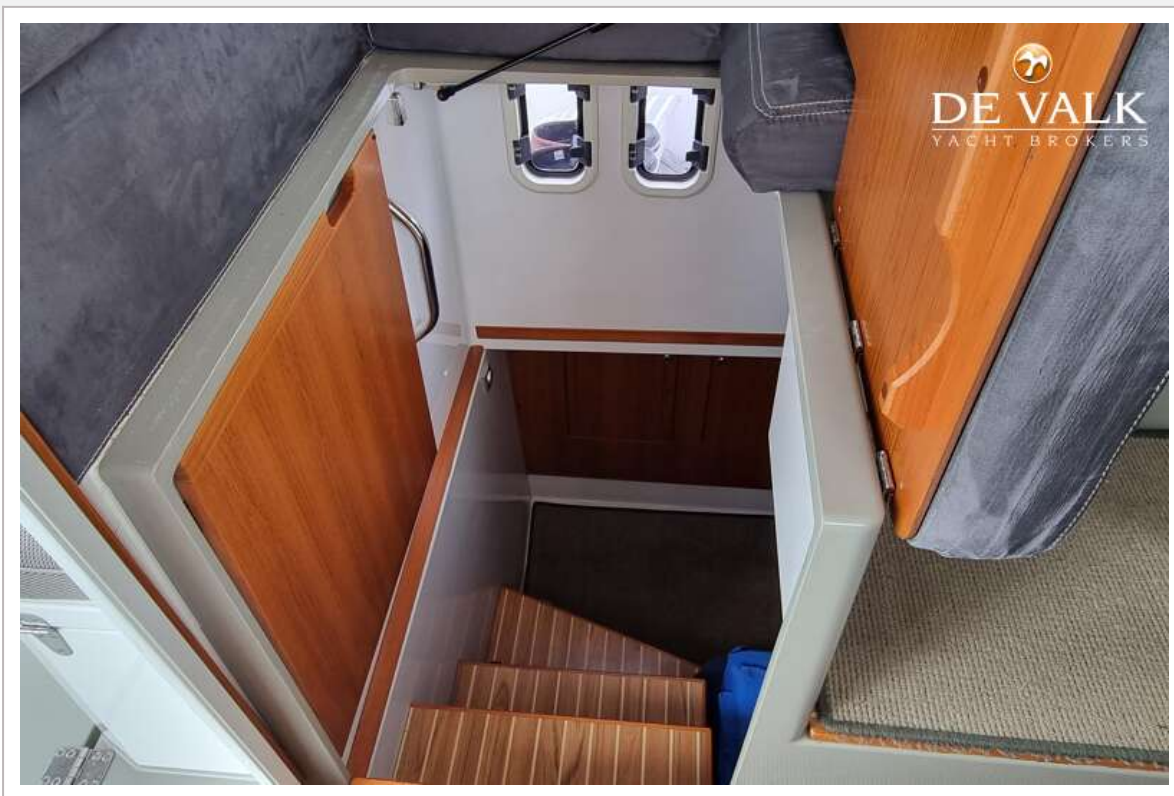
SARGO 33 EXPLORER



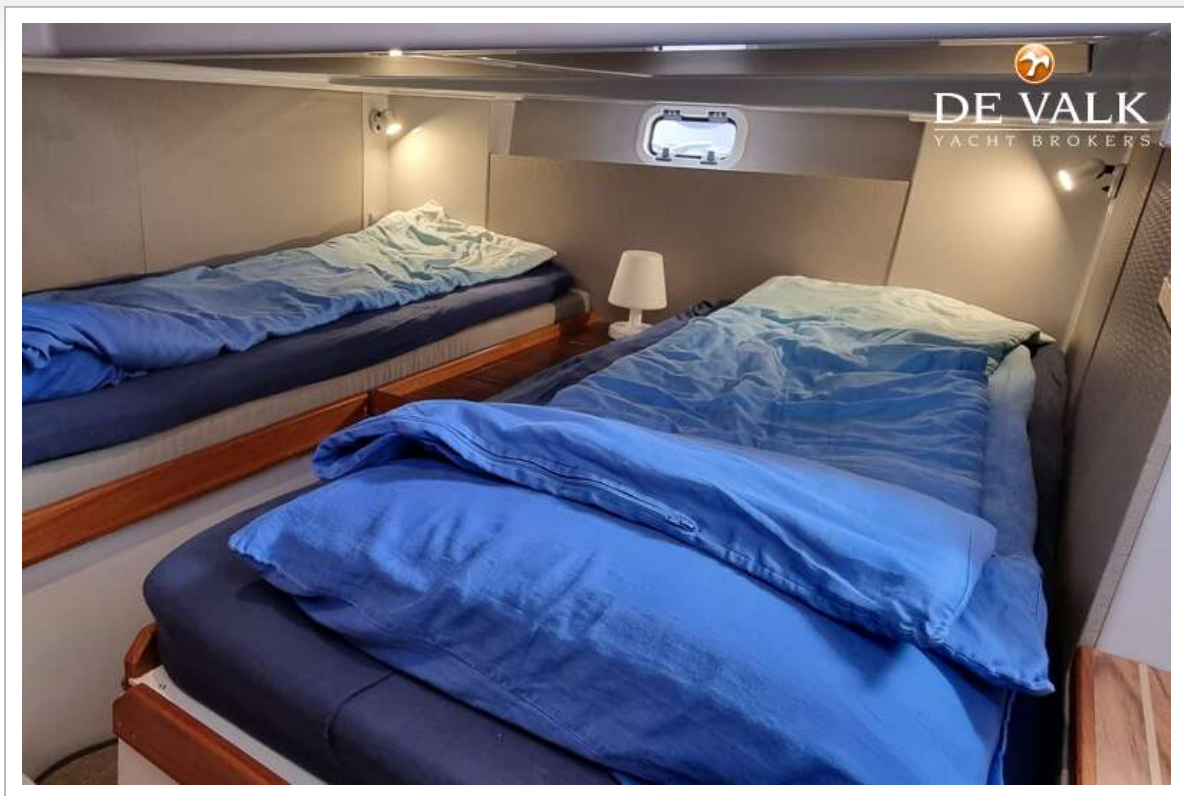
SARGO 33 EXPLORER



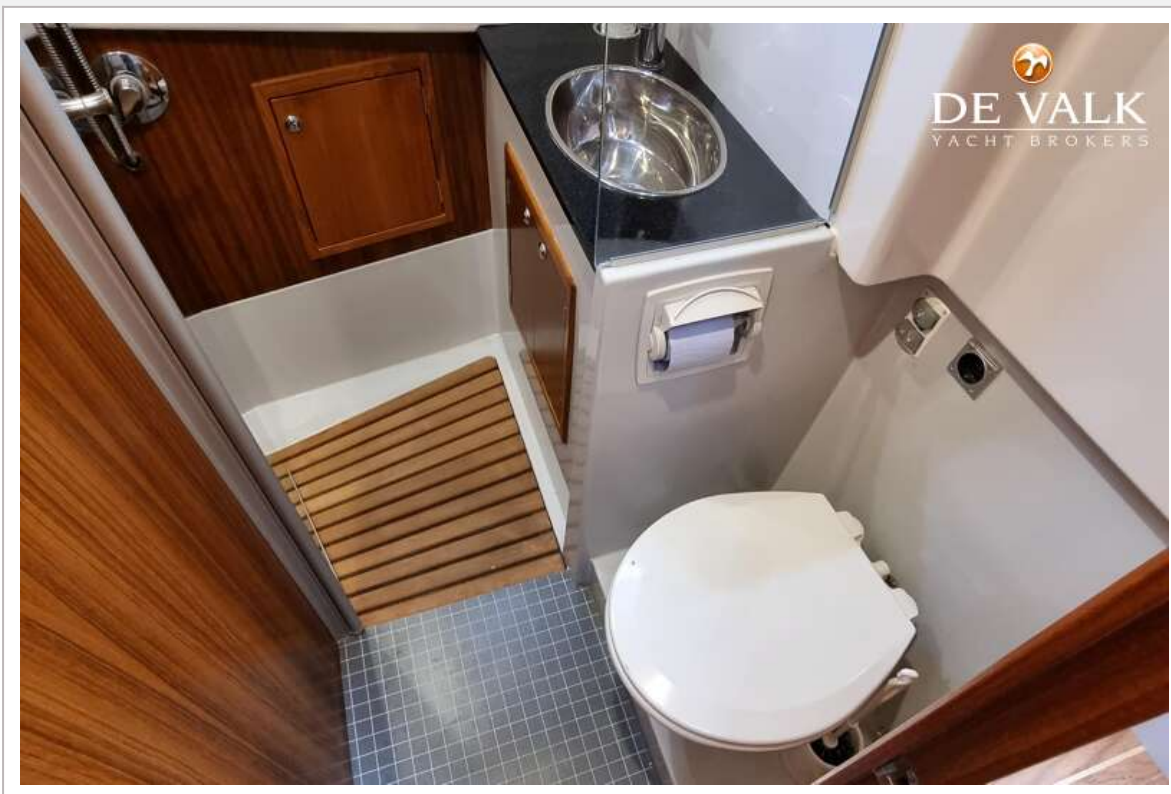
SARGO 33 EXPLORER



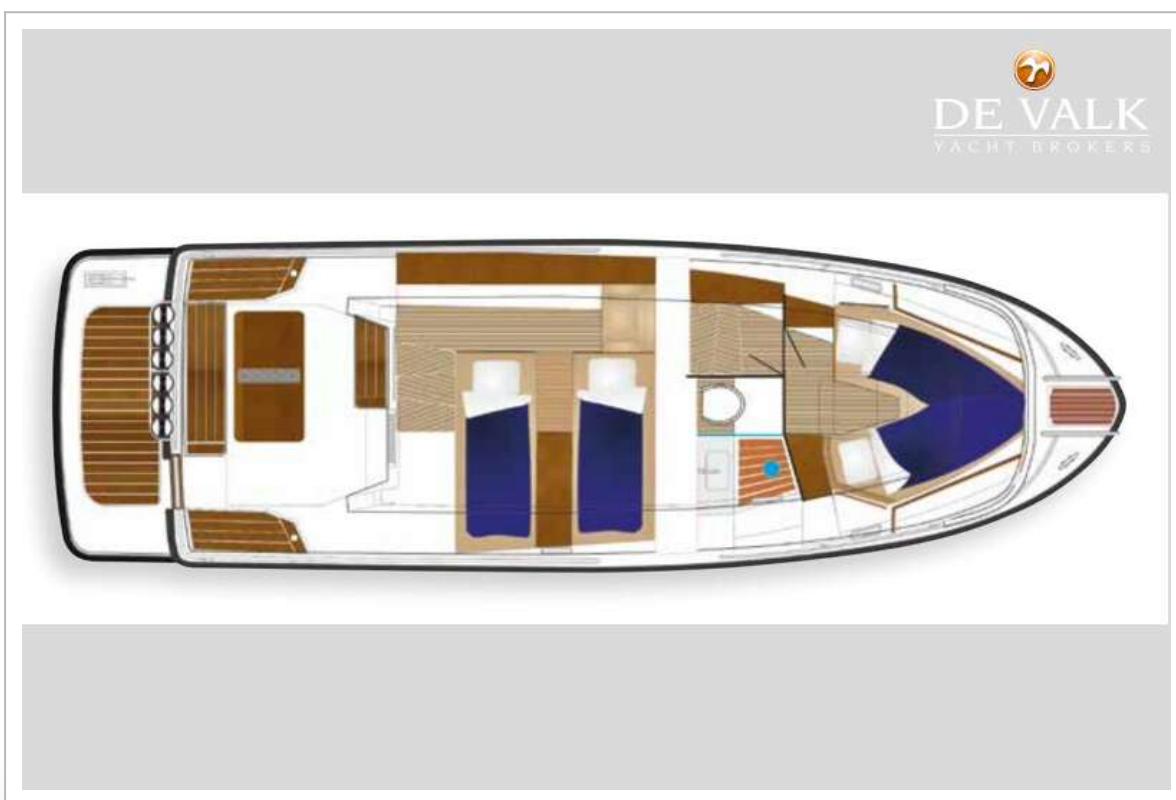
SARGO 33 EXPLORER



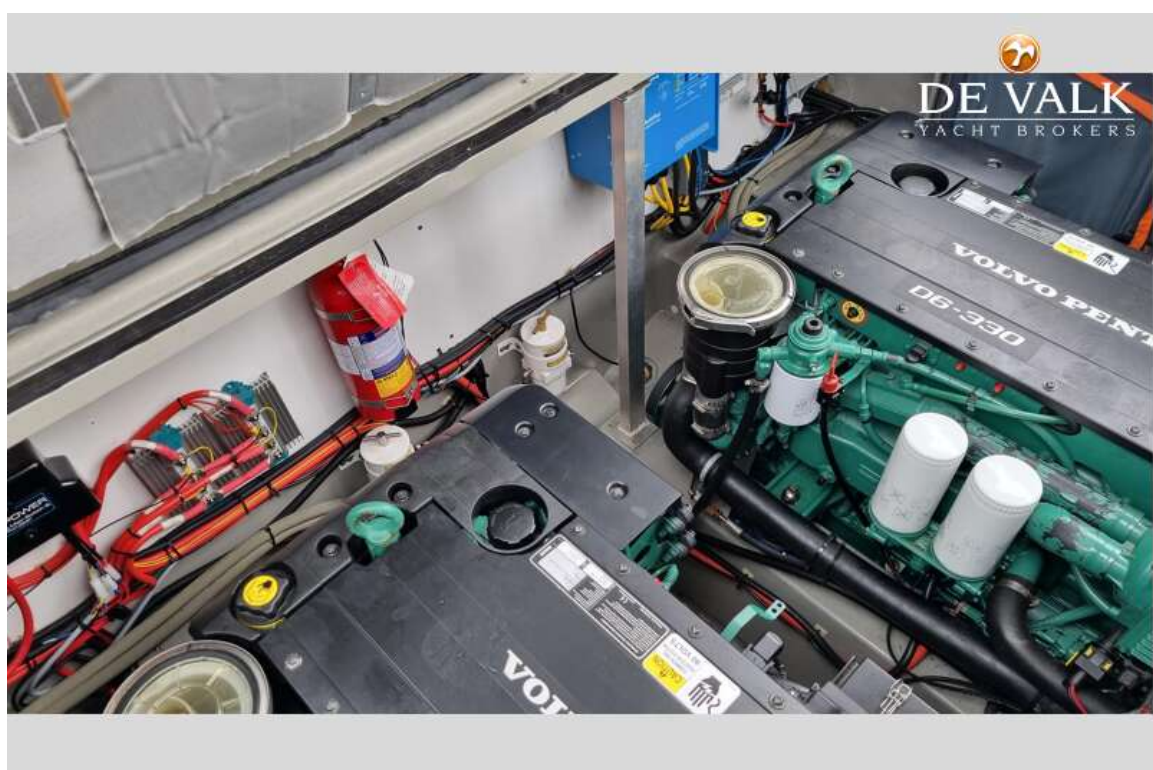
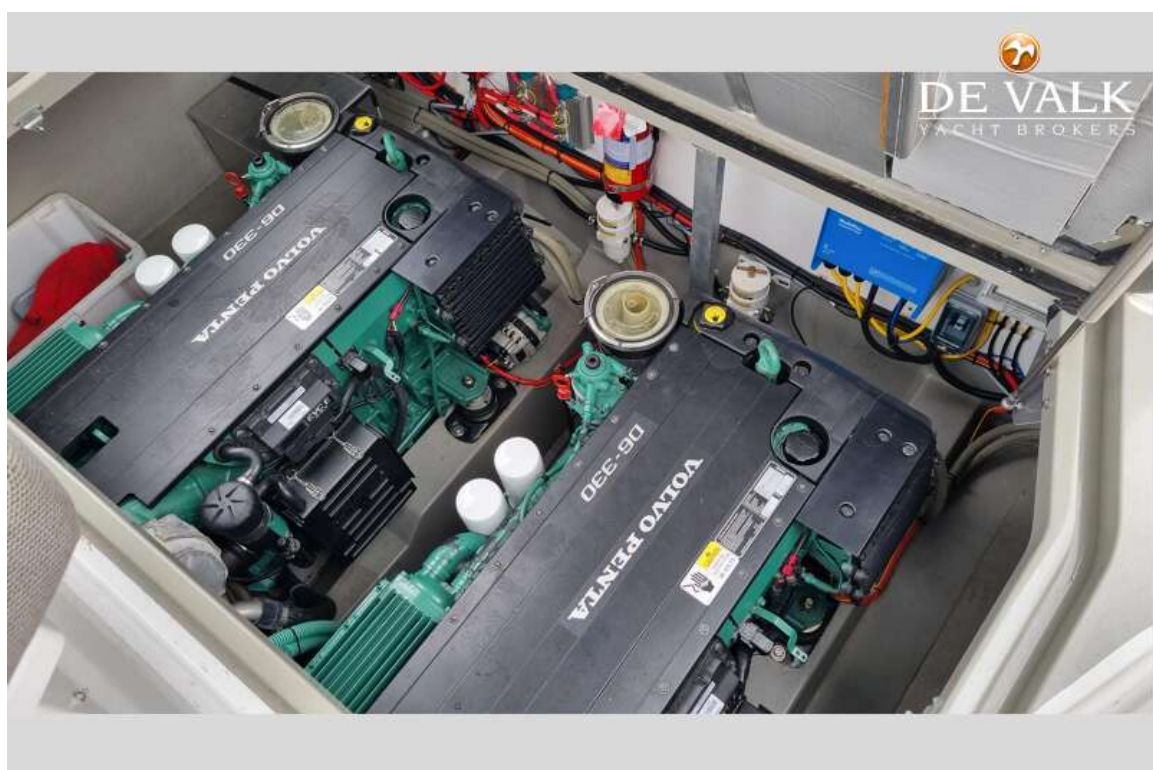
SARGO 33 EXPLORER



SARGO 33 EXPLORER



SARGO 33 EXPLORER



SARGO 33 EXPLORER

