



## EUROSHIP CLASSIC KOTTER 1350 OK

# EUROSHIP CLASSIC KOTTER 1350 OK

## BROKER'S COMMENTS

This very much custom built, open cockpit motor yacht was commissioned by her 1st experienced owner and he used all his knowledge to have built his perfect long range cruiser for the European waters. So much attention was put into her final design, technical engineering, detailing and comfort you really must have been onboard to fully appreciate her. When you enter the salon/pilothouse the first things that strike you is the amount of space, light and true 360 degrees field of view. She boasts a long list of smart options from central heating, aircon, spud pole, proportional thrusters etc.

*Marc Weijenberg*

## SPECIFICATIONS

<b>Dimensions</b>	13.50 x 4.46 x 1.28 (m)	<b>Builder</b>	Euroship & Ament and others
<b>Built</b>	2009	<b>Cabins</b>	2
<b>Material</b>	Steel	<b>Berths</b>	4
<b>Engine(s)</b>	1 x Iveco 150NEF diesel	<b>Hp/Kw</b>	150.00 (hp), 110.40 (kw)
<b>Asking price</b>	sold (VAT )	<b>Lying</b>	The Netherlands

## CONTACT

<b>Sales office</b>	De Valk Thuishaven	<b>Telephone</b>	+31 35 5829042
<b>Address</b>	Peperstraat 7 1411 PX Naarden NL	<b>E-mail</b>	thuishaven@devalk.nl

## DISCLAIMER

These particulars are given in good faith as supplied but cannot be guaranteed.



# EUROSHIP CLASSIC KOTTER 1350 OK

## GENERAL

Model	EUROSHIP CLASSIC KOTTER 1350 OK
Type	motor yacht
LOA (m)	13,50
Beam (m)	4,46
Draft (m)	1,28
Air draft (m)	2,96
Air draft min (m)	4,15
Headroom (m)	2,00
Year built	2009
Launched	2010
Builder	Euroship & Ament and others
Country	The Netherlands
Designer	Cees Cornelissen
Displacement (t)	23
Ballast (tonnes)	yes
CE norm	C
Hull material	steel
Hull colour	beige Awlgrip Desert-Sand
Hull thickness (mm)	5
Hull shape	multi hard chine
Keel type	long keel
Superstructure material	steel
Superstructure (mm)	4
Deck plate thickness (mm)	4
Rubbing strake	yes
Deck material	steel
Deck finish	non-skid paint
Cockpit deck finish	cork
Antifouling (year)	2024
Dorades	2 x in stainless steel



# EUROSHIP CLASSIC KOTTER 1350 OK

Window frame	aluminium Gebo
Window material	double glazing Gebo
Deckhatch	Gebo
Portholes	aluminium Gebo
Insulation	rockwool
Mast can be lowered	hydraulic
Fuel tank (litre)	steel 1 x 900
Fuel tank 2 (litre)	steel 2 x 450
Level indicator (fuel tank)	yes
Freshwater tank (litre)	polyethylene 710
Level indicator (freshwater)	yes
Blackwater tank (litre)	polyethylene 430
Level indicator (blackwater)	yes
Blackwater tank extraction	deck extraction + pump
Inside helm position	hydraulic Joystick
Outside helm position	hydraulic Joystick
More info on paintwork	Hull painted in Awlgrip, superstructure International. Deck antislip painted 2024. All paints are 2-comp system.
Extra info	Contruction started in 2008 and was commissioned in March 2010
Extra info	Sturdy bulkhead/door for engine room, fish-tail rudder (filled with oil), spudpole aft (hydraulic/wire) up to 205 cm depth under keel
Extra info	She is French Canal proof and has ample power to cruise the bigger waterways.

## ACCOMMODATION

Cabins	2
Berths	4
Interior	Light blond finished teak
Floor	teak and holly
Open cockpit	with huge underfloor storage room



# EUROSHIP CLASSIC KOTTER 1350 OK

Pilot house/deck saloon	yes
Saloon	With Antraciet upholstery and extra opening window in forward salon-area.
Headroom saloon (m)	2,00 / 1,98
Heating	central hot water Kabola 300 (incl. floorheating + 4 radiators & Kickspace)
Air-conditioning	reverse cycle airco Cruissair Turbo STQ10/10.000 BTU
Dinette	L-shape with seperate chair and hocker
Opening door to cockpit	3-way opening aluminum doors with double glazed windows
Galley	yes
Countertop	granite
Sink	stainless steel 2 x
Cooker	electric Bauknecht (induction 220v)
Oven	Bauknecht (220v)
Extractor	yes
Fridge	with freezer compartment Isotherm (220v, 130 ltr)
Hot water system	220V/engine/heating 60 ltr
Water pressure system	electrical
Owners cabin	double bed
Bed length (m)	2,00 x 1,55 mtr, headroom 1,98 mtr
Wardrobe	hanging/drawers/shelves
Bathroom	shared
Toilet	separate
Toilet system	electric Exalto
Wash basin	in the bathroom
Shower	separate
Extra info	headroom bathroom: 2,00 mtr
Guest cabin 1	double bed
Bed length (m)	2,20 x 1,50 mtr
Wardrobe	hanging and shelves
Washing machine	Nordland WA1845 (220v)



# EUROSHIP CLASSIC KOTTER 1350 OK

## Extra info

The salondors are fitted with a sliding fly-mosquito screendoor. The deckhatches have Oceanair blinds/mosquito nets. New faucets in bathroom and galley. Curtains in salon.

## Extra info

Every nook & cranny has been utilized to create copius amounts of stowage space. The CV heating system has been fully serviced (December 2024).

## MACHINERY

No of engines	1
Make	Iveco
Type	150NEF
HP	150
kW	110.40
Fuel	diesel
Year installed	2009
Maximum speed (kn)	8,8
Cruising speed (kn)	6,8
Consumption (l/hr)	6
Engine hours	3700
Engine cooling system	hopper cooling
Drive	shaft
Engine controls	electrical Morse
Gearbox	hydraulic PRM750
Bowthruster	hydraulic Sider (15hp, proportional)
Sternthruster	hydraulic Sider (15hp, proportional)
Exhaust	watercooled Silent separator
Thrust bearing	yes
Propeller type	fixed
Propeller blades	4
Propeller shaft material	stainless steel
Shaft lubrication	grease
Electric bilge pump	3 x 24v + 1 x 220v



# EUROSHIP CLASSIC KOTTER 1350 OK

Electrical installation	12/24/220v
Generator	silent separator Onan 7kW (in soundproof box)
Running hours generator	889
Start battery	2 x 180ah (2024)
Service battery	4 x 230ah AGM
Generator battery	1 x 88ah
Battery monitor	Victron monitor/control panel
Battery charger/inverter	2 x Victron 24v/220v/2000watt/60amp
Solar panel	Bluesolar 2 x 300watt + MPPT150/35 controller
Shorepower	with cable
Insulation transformer	Victron 3600w
Extra info	2 x 80amp alternators on main engine, 220v aircompressor with airlines for and aft (2022)
Extra info	Sprinkler/wash for cleaning blackwater and freshwatertank. Fueltanks have change-over valves/pumps and inter-fuelfilter system.
Extra info	Engineroom height 1,20 mtr

## NAVIGATION

Electric compass	yes
Depth sounder	Navman Tracker (incl. fishfinder)
Windset	weatherstation
VHF	Standard Horizon
Rudder angle indicator	yes
Plotter/GPS	CX2200E
Personal computer	Mini-pc (2022) with display, mouse and keyboard intergrated with VHF and AIS and Navigo navigation software.
Electronis chart(s)	Navigo navigation software (2023)
AIS receiver	yes
Camera	rearview and engineroom
Navigation lights	yes
Searchlight	yes



## EQUIPMENT

Cockpit cover	wintercover (2018) & summercover with gauzes (2023)
Cockpit cushions	yes
Bathing platform	with hydraulic dinghy lift
Boarding ladder	stainless steel
Transom door	yes
Deck shower	hot + cold water
Anchor	Pool (stainless)
Anchor chain	50 mtr (with chain/ketting/Kette stop)
Windlass	hydraulic
Deck wash	fore and aft connection (outside water)
Sea railing	stainless steel
Grab rail (superstructure)	stainless steel
Railing side opening gates	2 x
Lifebuoy	1 x
Wiper	3 x
Horn	electric
Radar reflector	(2024)
Fenders	8 x
Mooring lines	6 x
Spare parts	filters, belts, vhf antenna, hoses, etc.
TV	including Bose soundbar (2022)
Radio-cd player	yes
Speakers in salon	yes
Clock - barometer	yes
Fire extinguisher	2 x (serviced)
Extinguisher in engine room	1 x (not serviced)
Extra info	Wrap-around sunscreens for salon windows, deck and cockpit lighting





# EUROSHIP CLASSIC KOTTER 1350 OK



# EUROSHIP CLASSIC KOTTER 1350 OK





# EUROSHIP CLASSIC KOTTER 1350 OK



# EUROSHIP CLASSIC KOTTER 1350 OK





# EUROSHIP CLASSIC KOTTER 1350 OK



# EUROSHIP CLASSIC KOTTER 1350 OK





# EUROSHIP CLASSIC KOTTER 1350 OK

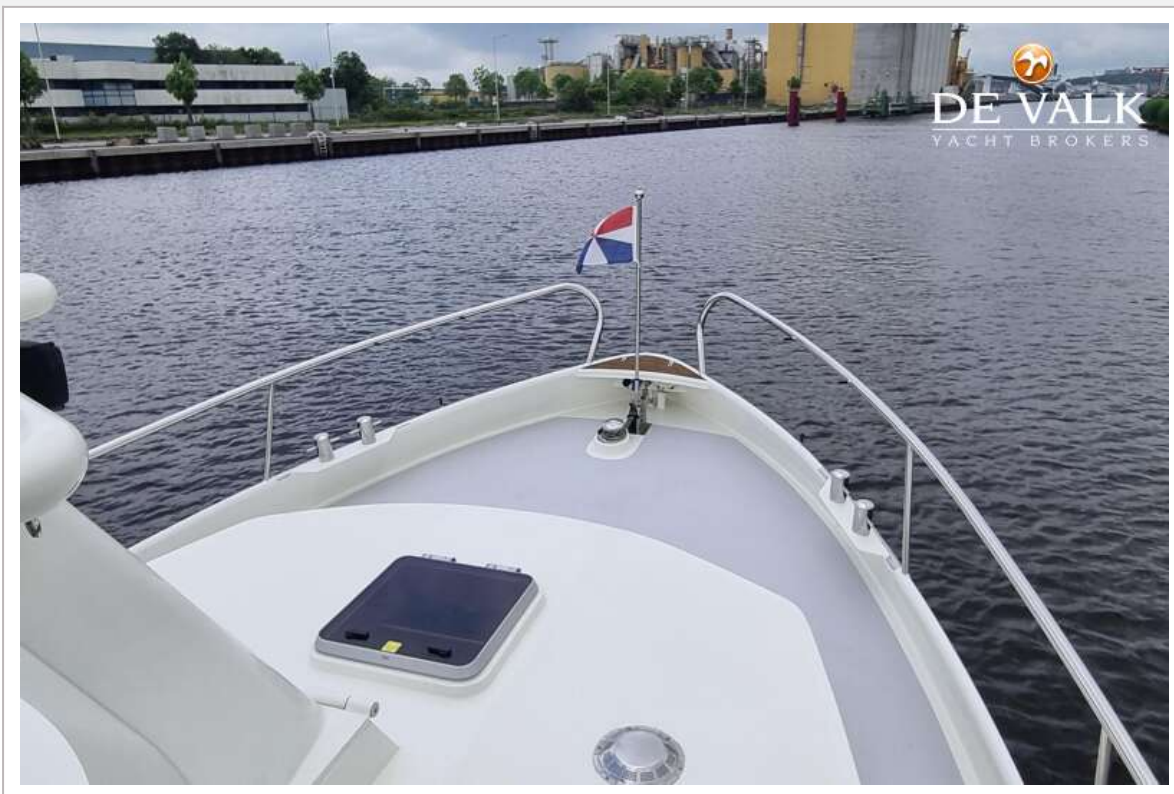


# EUROSHIP CLASSIC KOTTER 1350 OK

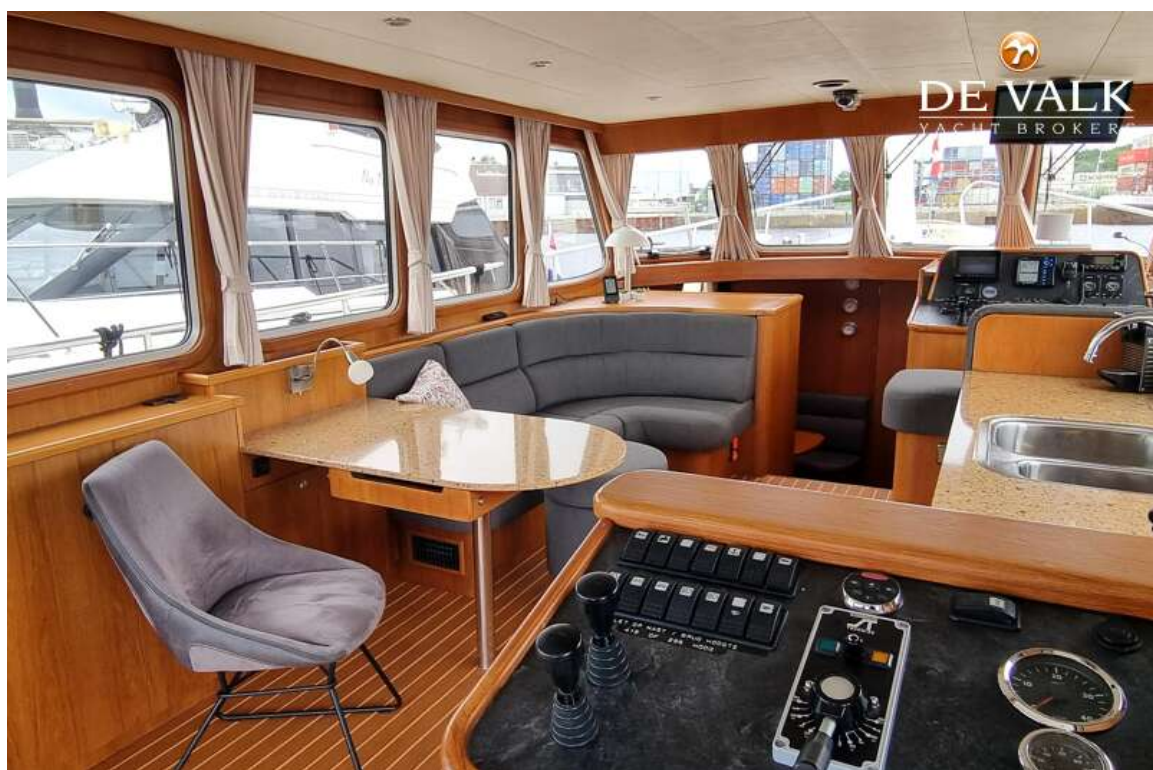




# EUROSHIP CLASSIC KOTTER 1350 OK

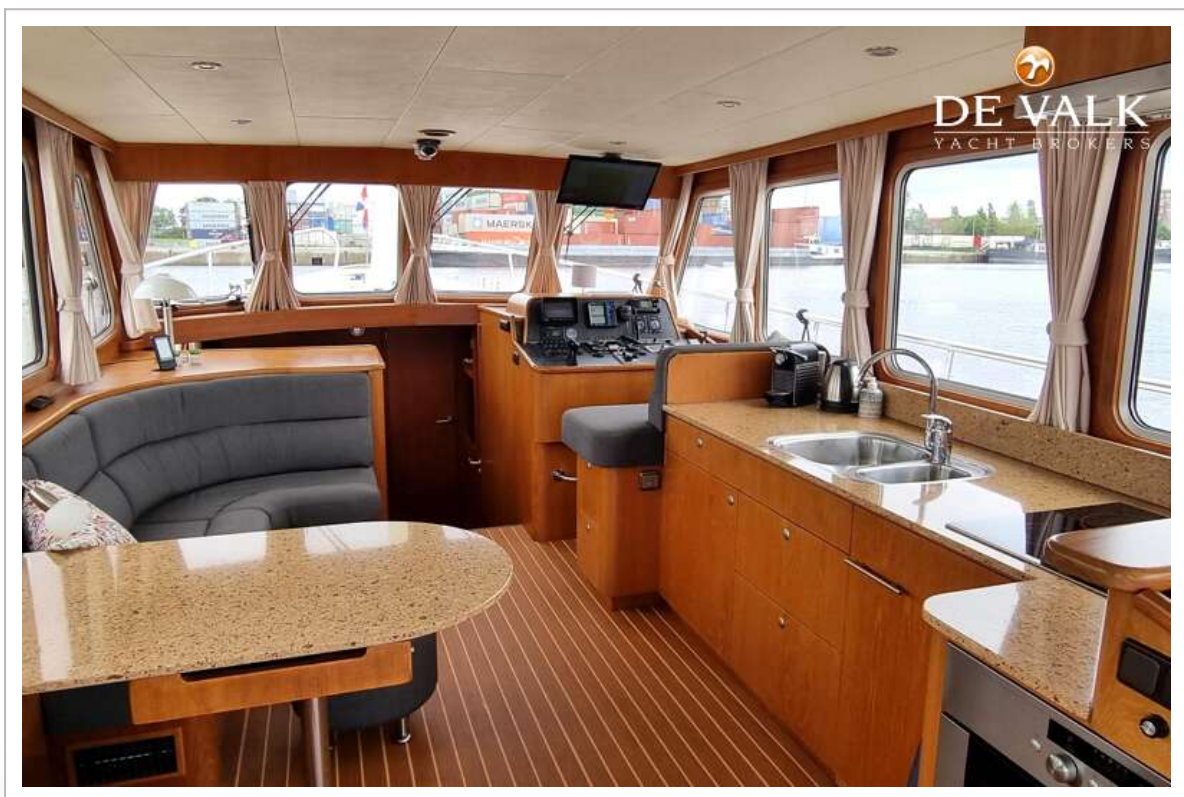
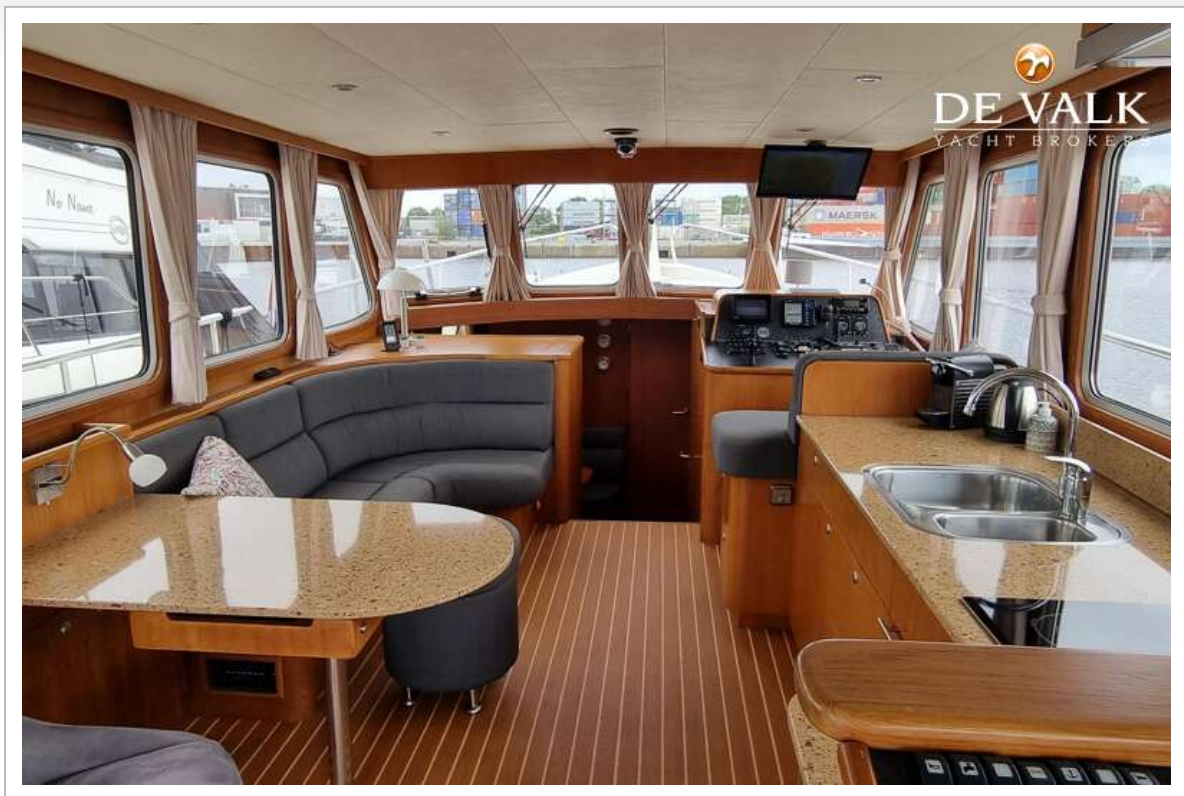


# EUROSHIP CLASSIC KOTTER 1350 OK

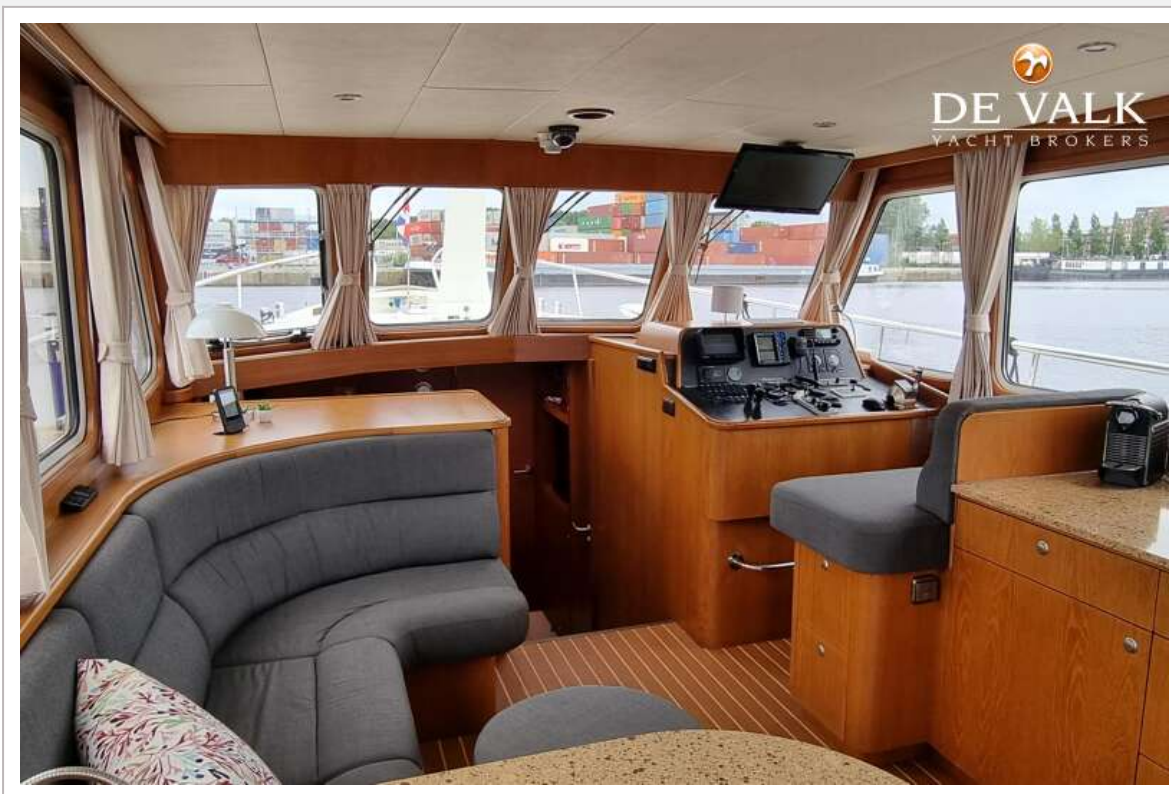




# EUROSHIP CLASSIC KOTTER 1350 OK

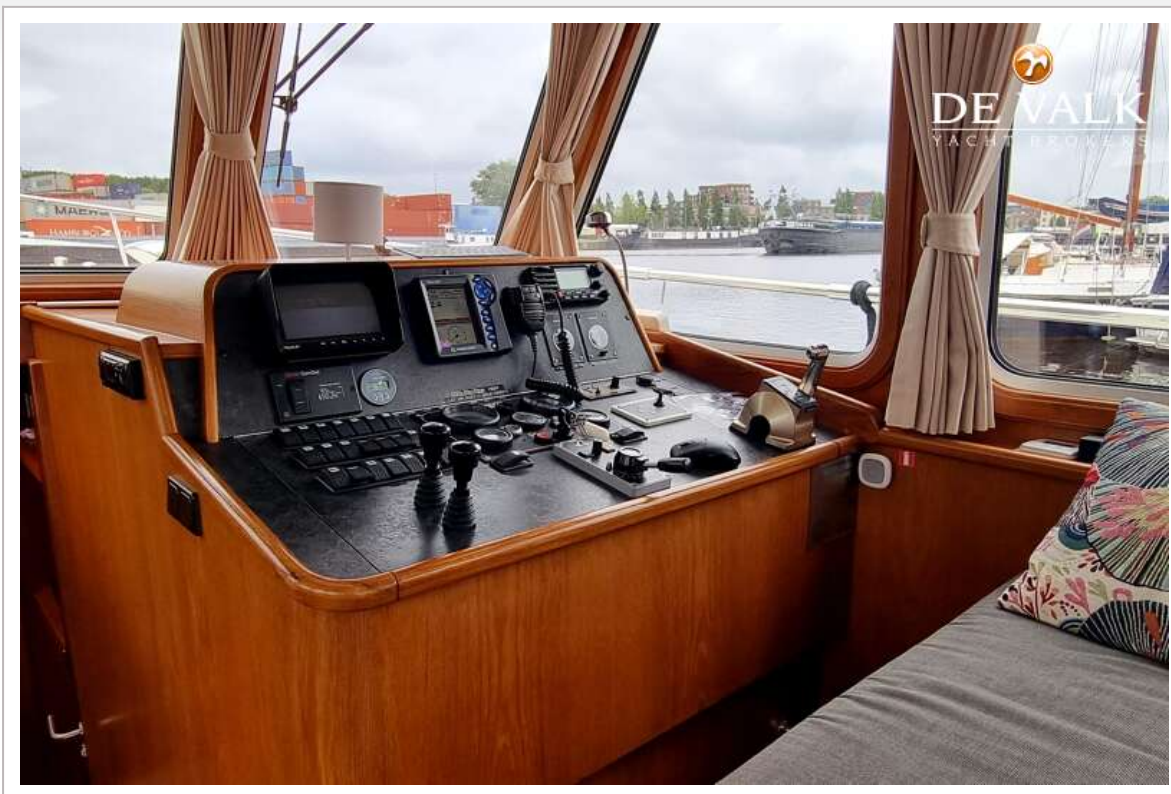


# EUROSHIP CLASSIC KOTTER 1350 OK



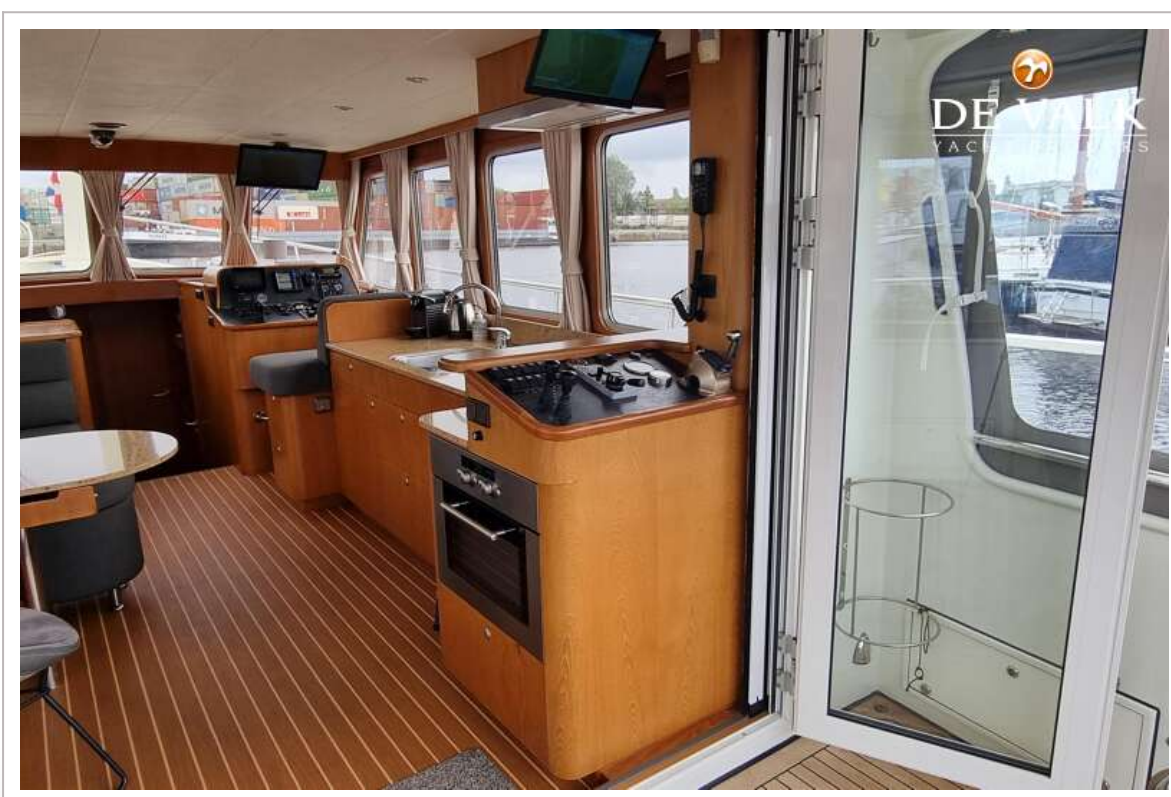


# EUROSHIP CLASSIC KOTTER 1350 OK

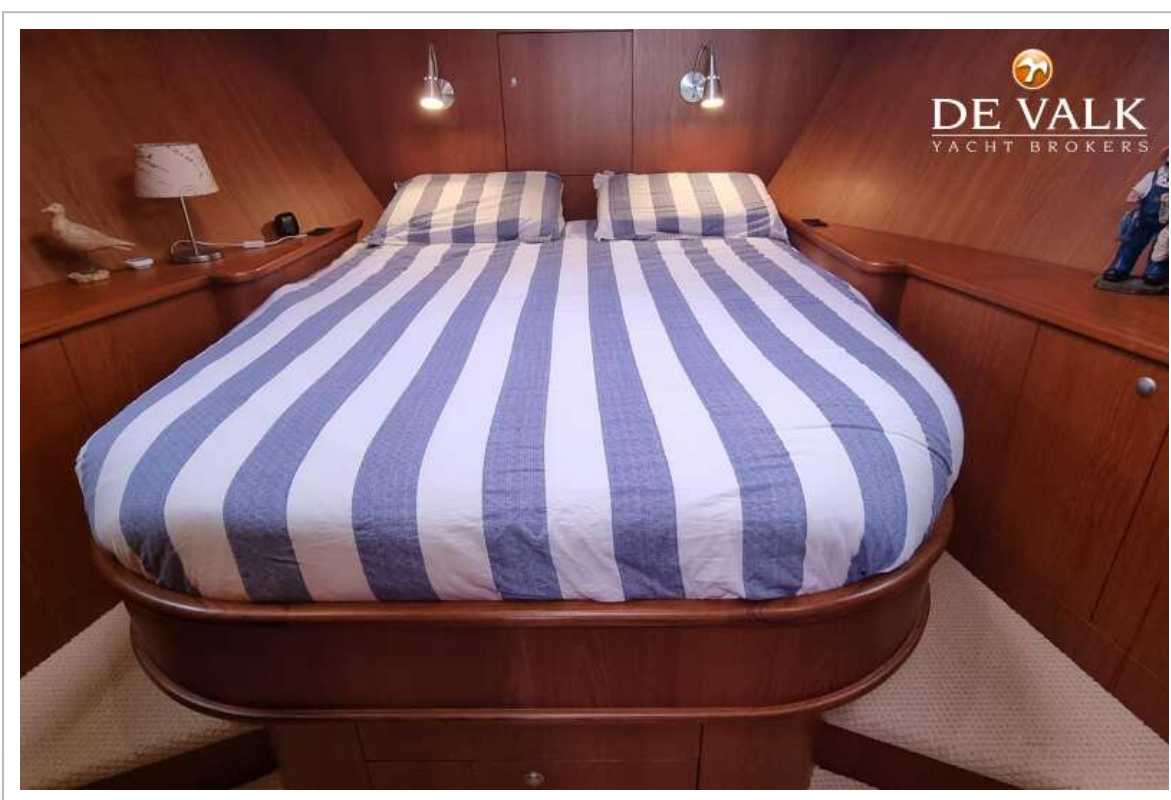




# EUROSHIP CLASSIC KOTTER 1350 OK

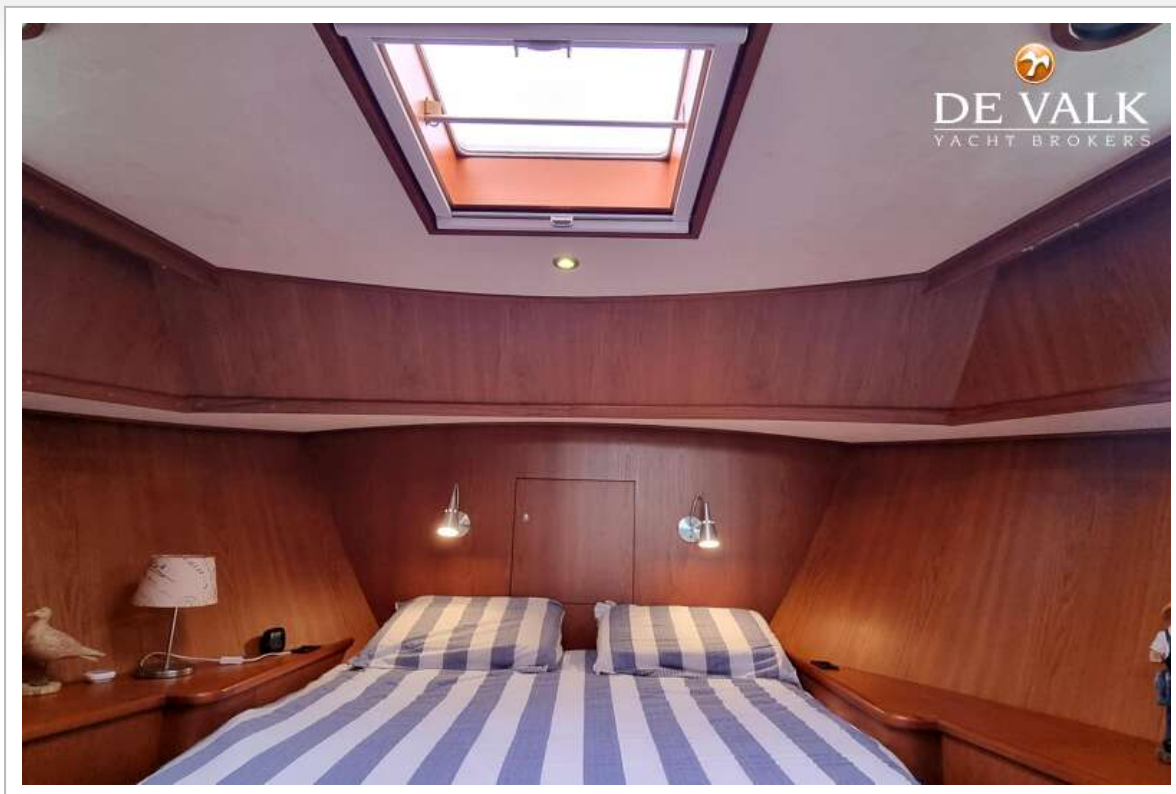


# EUROSHIP CLASSIC KOTTER 1350 OK





# EUROSHIP CLASSIC KOTTER 1350 OK

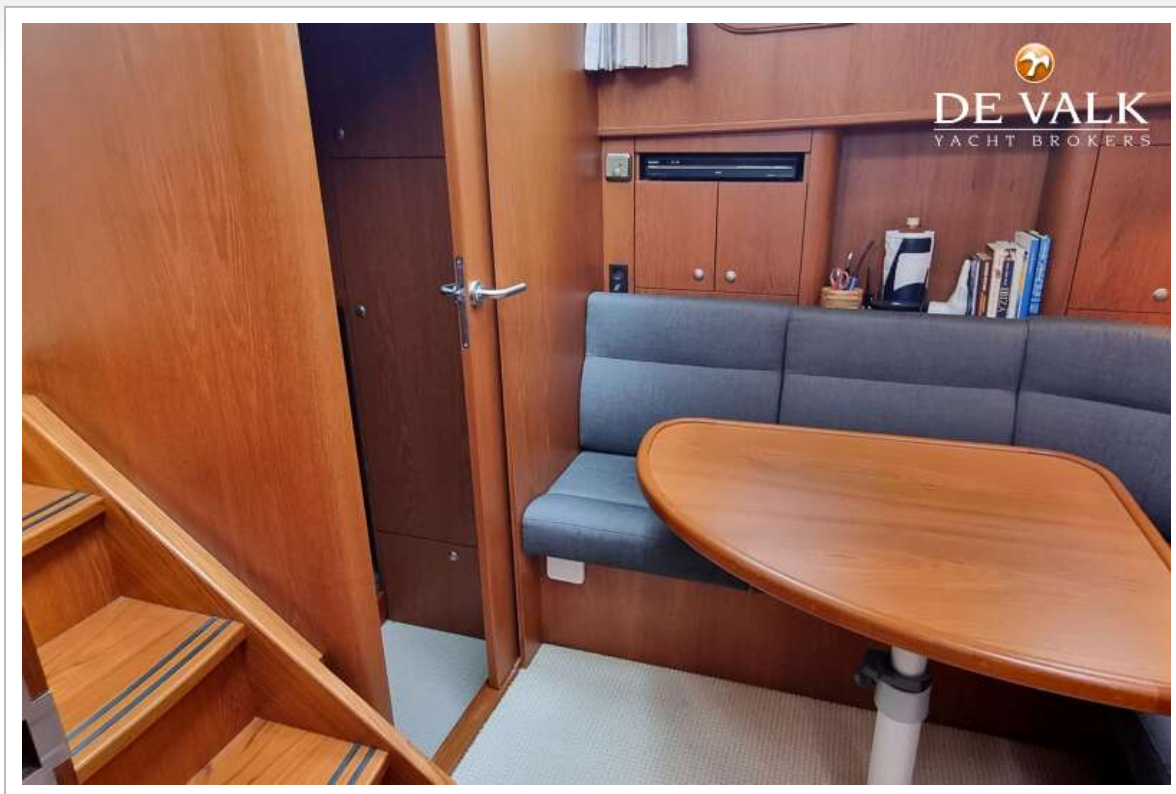




# EUROSHIP CLASSIC KOTTER 1350 OK

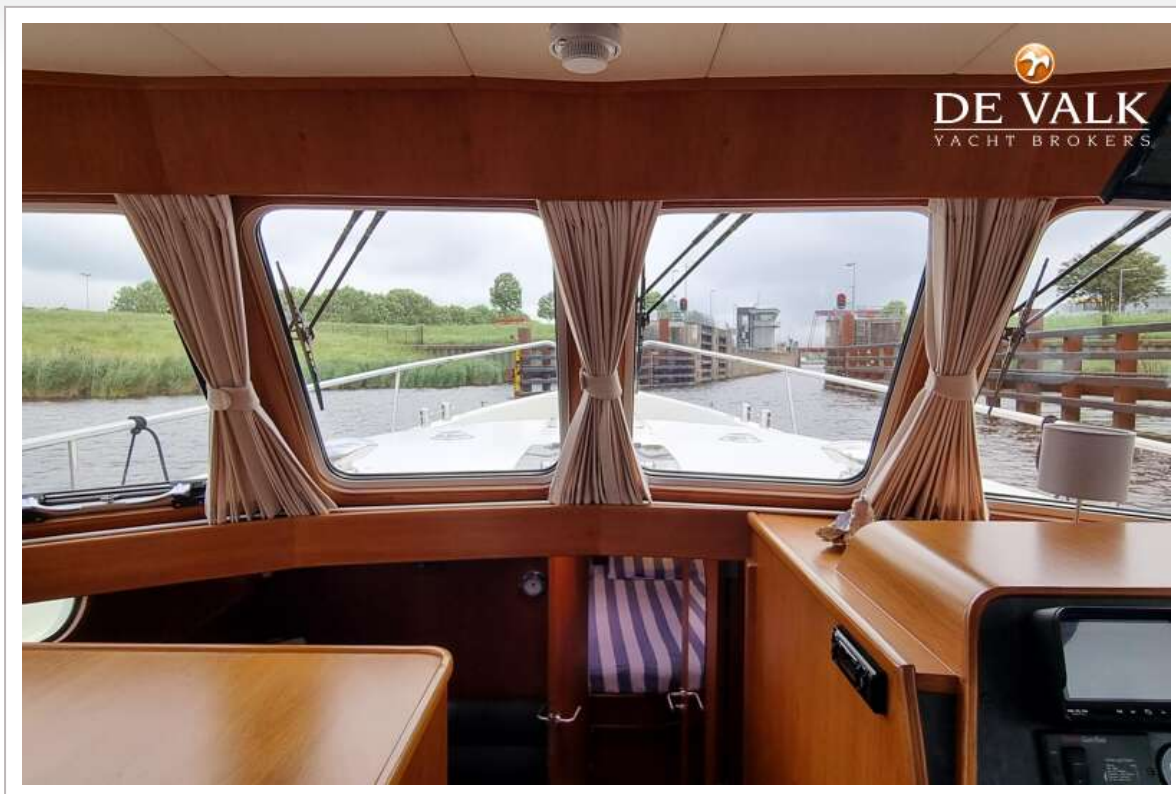


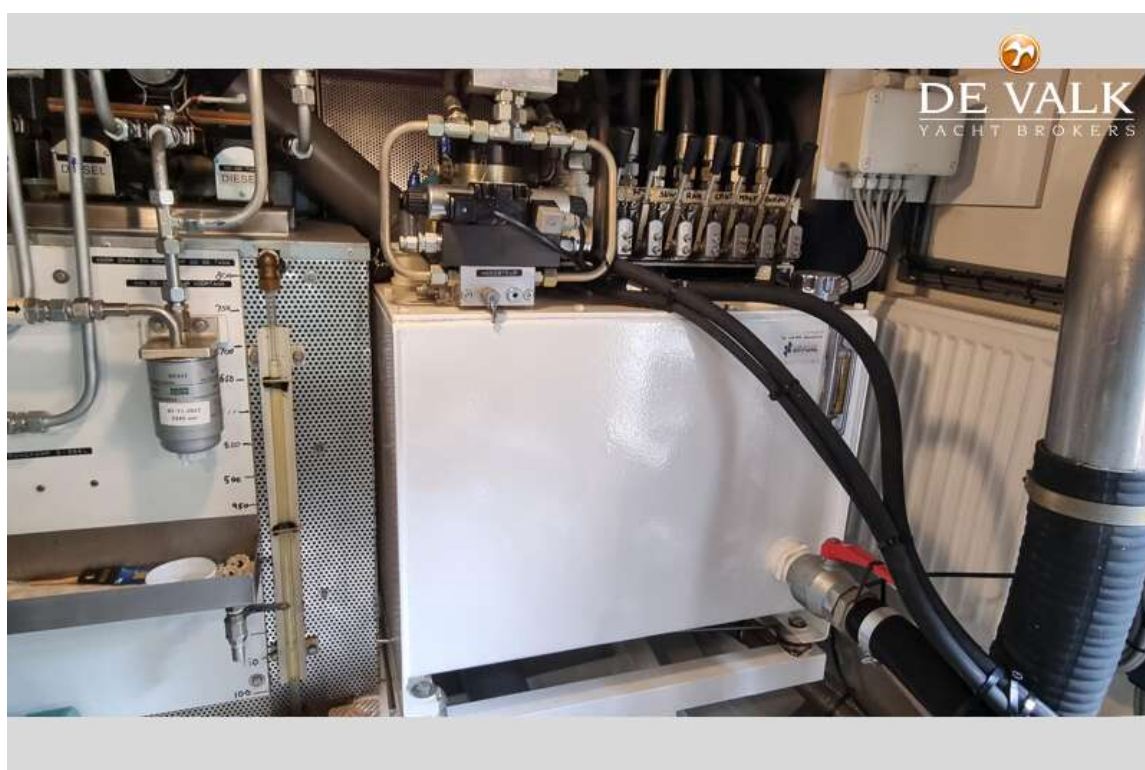
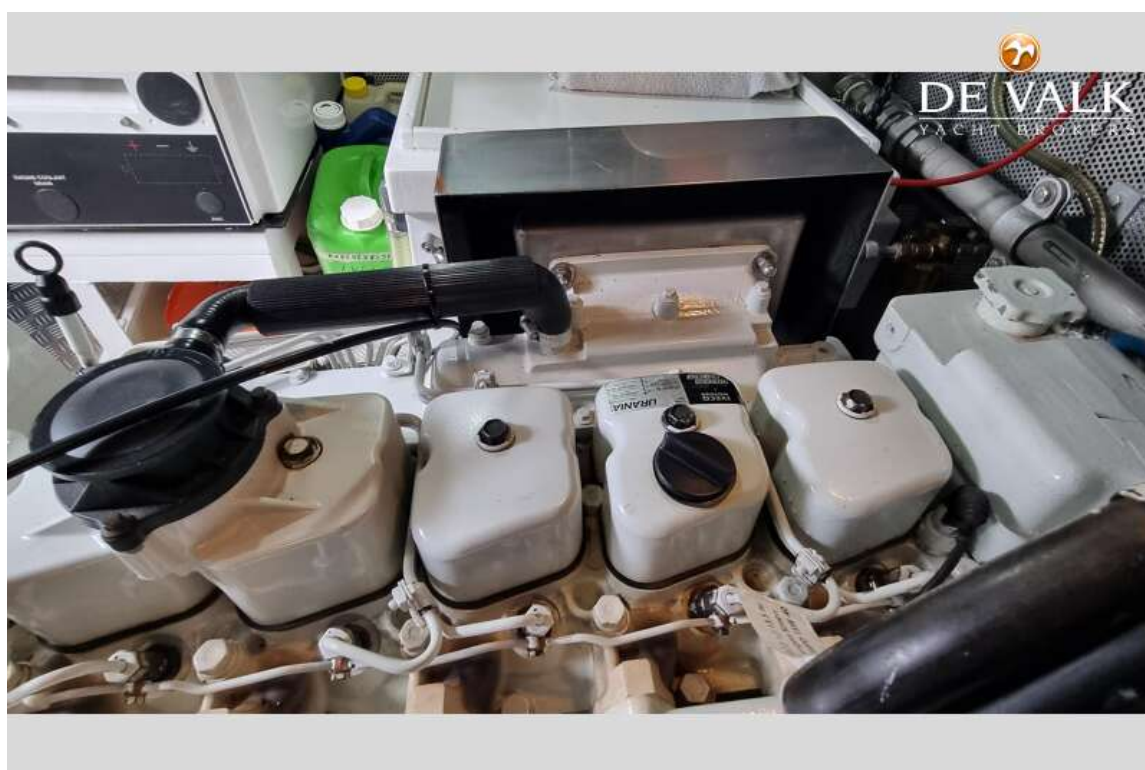
# EUROSHIP CLASSIC KOTTER 1350 OK





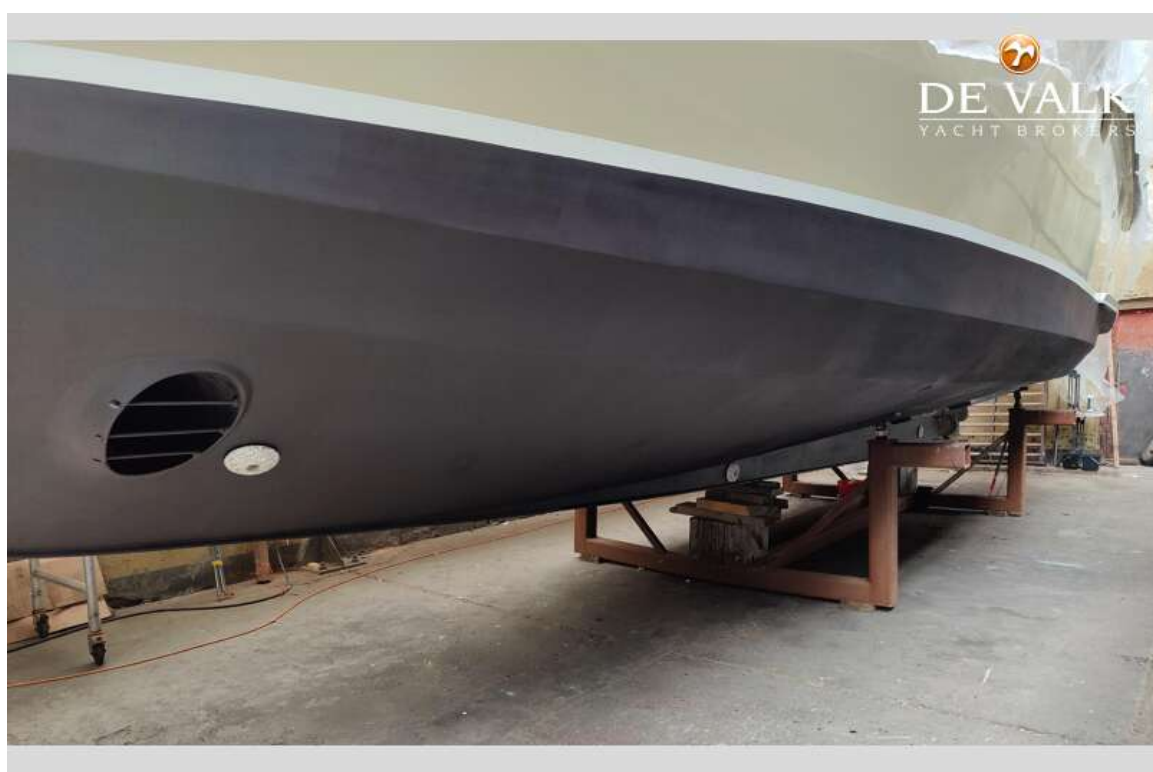
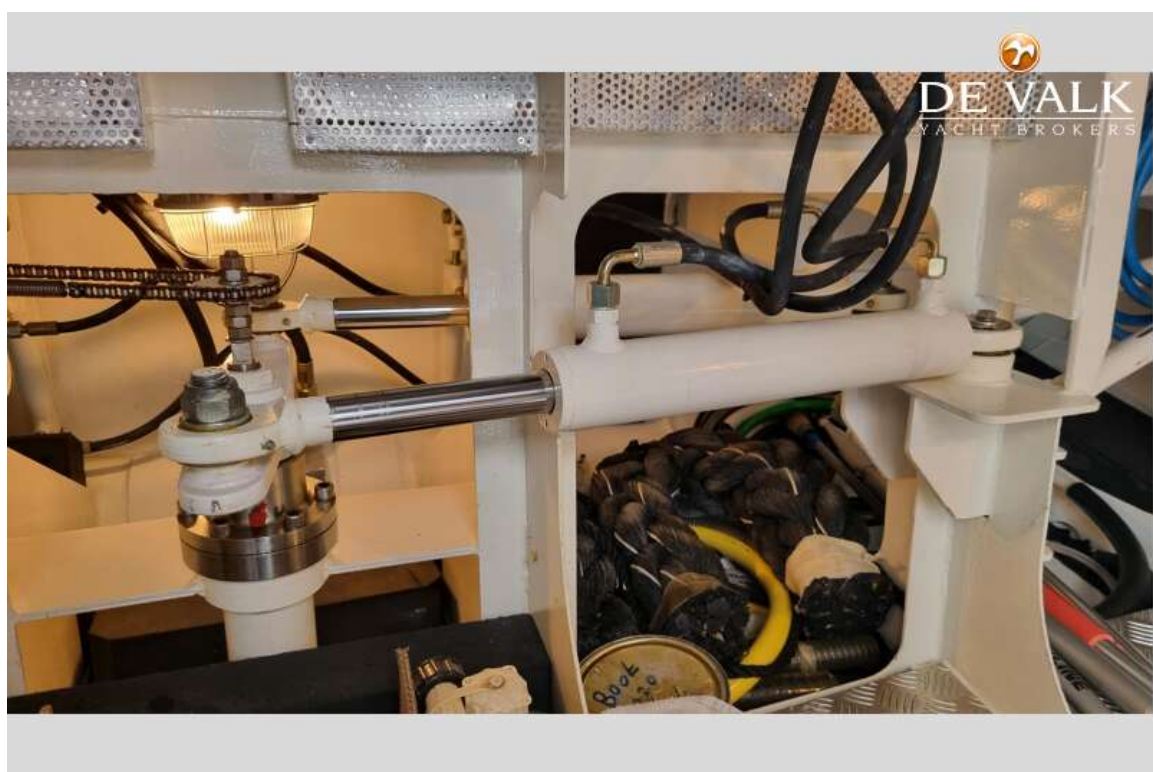
# EUROSHIP CLASSIC KOTTER 1350 OK







# EUROSHIP CLASSIC KOTTER 1350 OK



# EUROSHIP CLASSIC KOTTER 1350 OK

