



DE VALK
YACHT BROKERS



SCHOKKER 1600



DE VALK
YACHT BROKERS

SCHOKKER 1600

BROKER'S COMMENTS

The Schokker 1600 'Batavier' is a yacht with the appearance of a traditional Dutch fishing vessel, but built according to modern techniques! Major advantages: doesn't rust & finished with brass & stainless steel, so ideal for salt water cruising. A large cockpit, very spacious saloon and galley and up to 10 berths, assures her owner and crew a comfortable staying for both short trips or longer voyages. Even with a small crew, she is very easy to sail and manouver. The current owner recently spent a fortune on maintenance & upgrades, so 'Batavier' is really turn key ready for new adventures.

Nick Lanting

SPECIFICATIONS

Dimensions	15.65 x 5.85 x 1.10 (m)	Builder	Jachtwerf Langman, Nijkerk
Built	1992	Cabins	4
Material	Wood Epoxy	Berths	10
Engine(s)	1 x Yanmar 4 LHTE diesel	Hp/Kw	115.00 (hp), 84.53 (kw)
Asking price	€ 299.000 (VAT Paid)	Lying	at sales office

CONTACT

Sales office	De Valk Sint Annaland B.V.	Telephone	+31 (0)166 601 000
Address	Koelhuisweg 4 4697 RM Sint Annaland NL	E-mail	sintannaland@devalk.nl

DISCLAIMER

These particulars are given in good faith as supplied but cannot be guaranteed.



GENERAL

Model	SCHOKKER 1600
Type	sailing yacht
LOA (m)	15,65
Beam (m)	5,85
Draft (m)	1,10
Air draft (m)	21,00
Headroom (m)	2,10
Year built	1992
Builder	Jachtwerf Langman, Nijkerk
Country	The Netherlands
Designer	Langman
Displacement (t)	25
Ballast (tonnes)	lead Trimballast
CE norm	NA
Hull material	wood epoxy
Hull colour	black Two-component high-gloss painted in 2022
Hull shape	flat bottom
Keel type	box keel Keel bolts & plates checked, keel stripped & primed in 2024
Superstructure material	wood epoxy (5 cm Iroko)
Rubbing strake	wood Iroko with a brass protection strip
Deck material	wood epoxy (5 cm Iroko)
Deck finish	teak Completely checked & serviced & sanded & impregnated in 2024
Superstructure deck finish	teak Completely checked & serviced & sanded & impregnated in 2024
Cockpit deck finish	teak Completely checked & serviced & sanded & impregnated in 2024
Antifouling (year)	Sanded, primed, 2x antifouling in spring 2024
Window material	tempered glass



Deckhatch	5x Teak deckhatch. In 2024, all deckhatches were dismantled and all fitted with a new flyscreen, a new prism and new brass outrigger rods.
Portholes	brass All removed, cleaned and remounted in 2024
Fuel tank (litre)	stainless steel 500
Level indicator (fuel tank)	New sensor installed in 2023
Fuel daytank (litre)	stainless steel 80
Freshwater tank (litre)	stainless steel 800 - Tank has been cleaned in 2022
Level indicator (freshwater)	New sensor installed in 2023
Greywater tank (litre)	polyethylene 90
Level indicator (greywater)	New in 2023 : electric drain water pump
Wheel steering	cable steering Teak steering wheel, new lacquered in 2023
Tiller	yes
More info on hull	The entire ship including the hull was checked for water ingress in 2024, all (screw) holes were then drilled out, filled and neatly finished.
More info on paintwork	After everything on the exterior of the boat (deck fittings, winches, hatches, both leeboards and brass) had been dismantled in 2024, the entire woodwork (the superstructure, the toerails, the cockpit including entrance doors and sliding hatch, the mast base, the two leeboards, the rudder, the stern and all bollards) stripped, everything sanded bare (up to 400 grit). Then 8 layers of two-component lacquer, 5 layers of varnish and 2 layers of finishing lacquer were applied (15 layers in total). In addition, all white parts of the exterior have been sanded and varnished. Also new name plates have been made and installed.
Extra info	New in 2015 : 2 x Teak leeboard with manual brass winches and Dyneema rope. New clamping fingers were applied on both leeboard suspensions in 2024. There are covers for both leeboards.
Extra info	The diesel day tank can be filled with either a manual pump or an electric pump.
Extra info	The ship was built using the wood epoxy method. The core consists of 5 cm thick Iroko wood, which is a durable and rot-resistant hardwood.



ACCOMMODATION

Cabins	4
Berths	10
Interior	mahogany & New Blue upholstery (New in 2021)
Floor	teak and holly Saloon floor panels completely sanded and new lacquered in 2023
Open cockpit	yes
Saloon	New in 2022 : Stools/poufs in the saloon
Headroom saloon (m)	2,10 - 2,22
Heating	central heating Kabola B12, completely serviced (Semi overhauled) in 2023
Chart table	On starboard side, next to the entrance
Dinette	yes
Opening door to cockpit	yes
Galley	Headroom : 2,10 m
Countertop	wood Completely sanded and new lacquered in 2023
Sink	stainless steel With a new tap (2023)
Cooker	calor gas New in 2023 : Bosch 4-burner with Piezo inflammation
Extractor	220 Volt, refurbished in 2023
Fridge	New in 2022 : Dometic Front loader fridge with small freezer
Freezer	Top loader combi - 2023 : Compressor overhauled & New waterpump
Hot water system	220V/engine/heating New in 2023 : 75 Litre Boiler
Water pressure system	electrical New in 2023 : Hydrofoor, pressure tank and water pump
Owners cabin	double bed First cabin on starboard side - Headroom : 1,97 m
Bed length (m)	2,00 x 1,75
Wardrobe	hanging and shelves
Bathroom	separate Headroom : 1,82 - 2,00 m
Toilet	shared In the bathroom
Toilet system	electric Temca, New impeller & toilet seat in 2023
Wash basin	in the bathroom



Shower	shared In the bathroom - Headroom : 1,92 m
Extra info	Extra wash basin in cabin. Bed widened and new cold foam mattress in 2022
Guest cabin 1	bunk bed On port side : Headroom : 1,92 m
Bed length (m)	2,06 x 0,67 & 2,06 x 0,60
Wardrobe	hanging and shelves
Wash basin	in the cabin
Extra info	New in 2022 : 2 x cold foam mattresses
Guest cabin 2	bunk bed On starboard side - Headroom : 1,92 m
Bed length (m)	2,04 x 0,65 & 2,02 x 0,76
Wardrobe	hanging and shelves
Wash basin	in the cabin
Extra info	New in 2022 : 2 x cold foam mattresses
Guest cabin 3	twin single In the bow - Headroom : 1,73 - 1,76 m
Bed length (m)	(2 x) 1,92 x 0,70 - 1,10
Wardrobe	shelves
Extra info	New in 2022 : 2 x cold foam mattresses
Extra info	New in 2023 : New 220 Volt sockets with new switching material, new lighting switches and new 220 Volt fuse boxes installed. The interior lighting was then equipped with new LED (some fixtures were also renewed) and new dimmers were installed in the saloon and in the corridor/hallway. Headroom in corridor to the bow : 1,90 - 1,95 m. All 12 Volt & 24 Volt wiring on board was checked in 2023, renewed where necessary and all unnecessary wiring was removed. A new switch panel has also been installed for both the 12 Volt and 24 Volt systems.
Extra info	The bathroom wall has been sanded and revarnished in 2023. All mattresses have slatts underneath. Louvre cupboard doors in all cabins. The board cabinets have been equipped with new and additional shelves in 2023. The original watertap from the galley is still available.

MACHINERY

No of engines	1
----------------------	---



SCHOKKER 1600

Make	Yanmar
Type	4 LHTE
HP	115
kW	84.53
Fuel	diesel
Year installed	1992
Year of overhaul	The turbo has been refurbished in 2022
Maximum speed (kn)	9
Cruising speed (kn)	8
Consumption (l/hr)	3,5
Engine hours	1775
Engine cooling system	freshwater heat exchanger
Drive	shaft
Engine controls	bowden cable New in 2023 : control & cables
Gearbox	mechanical KM5A
Bowthruster	water jet New in 2015: Holland Marine Parts Jet Thruster JT90 24V & remote
Exhaust	watercooled
Propeller type	fixed Polished in 2022
Propeller blades	4
Propeller shaft material	stainless steel
Shaft lubrication	grease
Manual bilge pump	yes
Electric bilge pump	New in 2023 : installed in engine room
Electrical installation	12 & 24 & 220 Volt
Start battery	New in 2022 : 1 x Varta 154 Ah
Service battery	New in 2015 : 4 x AGM 225 Ah
Bowthruster battery	New in 2015 : 4 x Optima Yellow Top 75 Ah
Battery monitor	New in 2023 : Mastervolt ICC & Expert Modular Battery Monitor
Battery charger	New in 2015 : Mastervolt ChargeMaster 24/20-3 (for the thruster batteries) & Mastervolt 12V/10A / 24V/5A.
Battery charger/inverter	New in 2015 : Mastervolt Mass Combi 24/2500-60



Diode battery combiners	yes
Shorepower	with cable New shore power cable connector installed in the cockpit in 2023
Insulation transformer	New in 2015 : Victron Energie Orion TR Smart 24 / 12 - 30 Non-isolated DC/DC charger
Extra info	1x 12 Volt & 1x 24 Volt alternator on the engine. In the engine room is space to install a generator. The foundation of the old, removed and no longer available generator is still present.
Extra info	Everything was dismantled from the engine in 2023, after which a major service was carried out, including adjusting the valves, the internal cooling system was pressure tested, the V-belts were replaced, the diesel hoses were replaced and the valves on the fuel hoses were replaced. Also the Aquadrive has been remounted in 2023 and fully serviced. New in 2023 : New engine room lights & New wooden (gray painted) floor panels & New gas springs on the engine hatch (in the cockpit floor).
Extra info	Several sea cocks renewed in 2023 & all sea cocks have been checked & serviced in 2024.

NAVIGATION

Compass	Cassens & Plath on pedestal
Electric compass	In autopilot
Depth sounder/log	New in 2015 : Raymarine I70
Log	New in 2015 : Raymarine I70
Windset	New in 2015 : Raymarine I70
Repeater	New in 2015 : Raymarine I70
VHF	Sailer Compact VHF RT2048 with a New cockpit speaker (2023)
Autopilot	New in 2015 : Raymarine evelution 400 sail & remote
Rudder angle indicator	Via autopilot
Plotter/GPS	New 2015 : Raymarine C125 multifunctional display Wifi connected
Electronic chart(s)	yes
Camera	Raymarine Cam100 On the bow
Navigation lights	New in 2022 : 3-colour LED light & LED deck light



Extra info

Cables and connectors from all board lights renewed in 2023

EQUIPMENT

Cockpit cover	yes
Winter cover	yes
Cockpit cushions	New in 2022 : dark blue
Cockpit table	New in 2022 : removable, Mahogany with a folding table leg
Boarding ladder	Brass steps remounted on rudder with proper screws in 2023
Bow ladder	2 x Custom Made in stainless steel
Deck shower	New in 2023 : Connection in cockpit (hot/cold pressured water)
Anchor	CQR Plough
Anchor chain	yes
Windlass	manual Overhauled & repainted in 2024
Deck wash	New in 2023 : Connection in the cockpit
Dinghy	Zodiac 320
Outboard	Yamaha 4 Hp
Fenders	yes
Mooring lines	yes
TV	Salora flat screen mounted on a rails (electric up/down)
TV receiver	With a Chroome Box
Radio-cd player	New in 2021 : Fusion MB-CD 500
iPod connection	yes
Cockpit speakers	2 x Fusion 200 Watt
Speakers in salon	2 x Fusion
Clock - barometer	yes
Fire extinguisher	5 x
Extra info	Complete new gas locker installed in 2022
Extra info	New in 2022 : the pennant (in the mast head)
Extra info	Boat is now in a frost-free winter storage, next to our office

RIGGING



Rigging	gaff-rig Professional checked in 2022
Standing rigging	wire Professional checked in 2022
Brand mast	Custom Made, also the boom and the gaff
Material mast	wood Mast, boom & gaff lacquered (15 layers) in 2023
Mainsail	Checked & serviced in 2024
Mainsail cover	With Lazy Jacks (New in 2021)
Battcars	New in 2022 : string line with wooden beads
Genoa	Genoa provided with a new Luff for furling system (in 2024)
Genoa furler	New in 2024 : Electric Selden Furlex
Genoa cover	New in 2024
Yankee	yes
Reefing System	slabreefing
Primary sheet winch	2 x Brass Barient 28+ ST, serviced in 2024
Secondary sheet winch	2 x Brass Barient 22 - 39 ST, serviced in 2024
Genoa sheetwinches	2 x Brass Barient 27 - 48 ST, serviced in 2024
Halyard winches	Mainsail halyard and Gaff halyard can be hoisted via J.Y. Strikwerda multifunctional winch (manual or hydraulic controlled)
Multifunctional winches	J.Y. Strikwerda multifunctional winch, serviced in 2023
Extra info	All blocks stripped and lacquered in 2023. The hydraulic system was checked & serviced & all high pressure hoses have been renewed in 2023. The original stay for the genoa is still available. The hydraulic system was checked in 2023 and all hoses of the hydraulic system were replaced.
Extra info	New in 2023 : gray Dyneema halyards & cotton sheets



SCHOKKER 1600



SCHOKKER 1600



SCHOKKER 1600

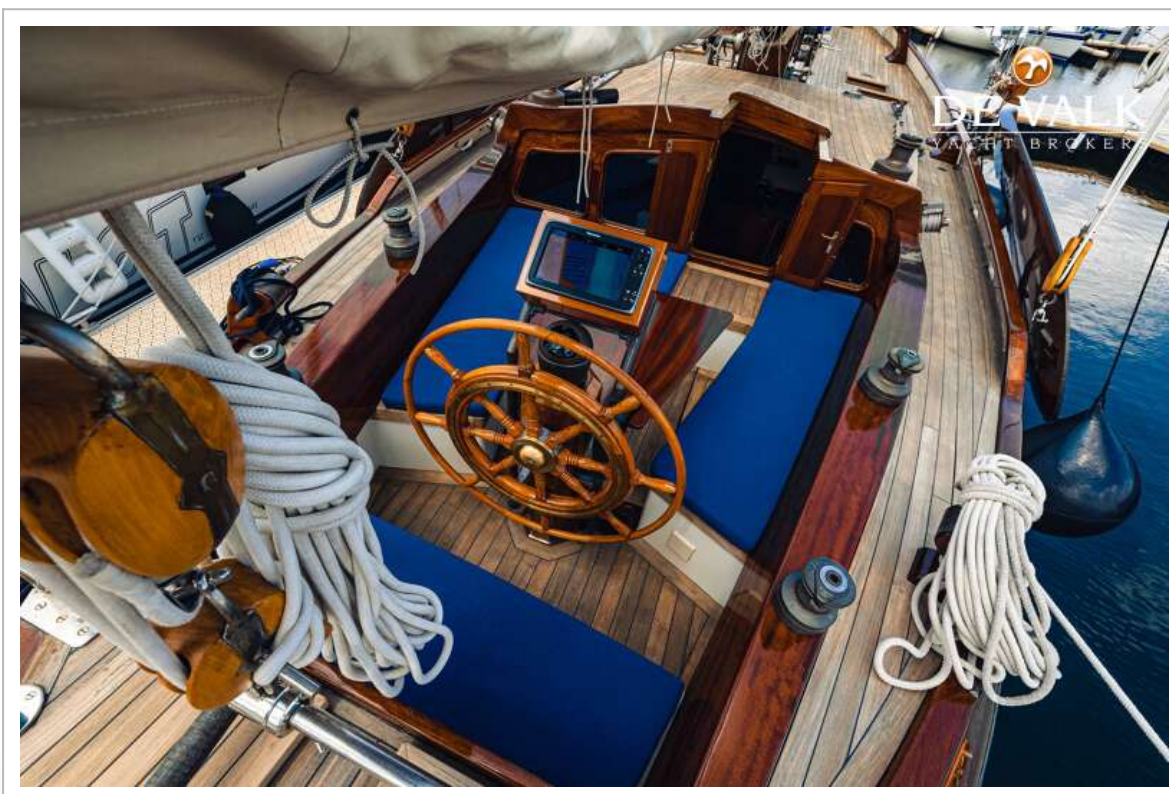
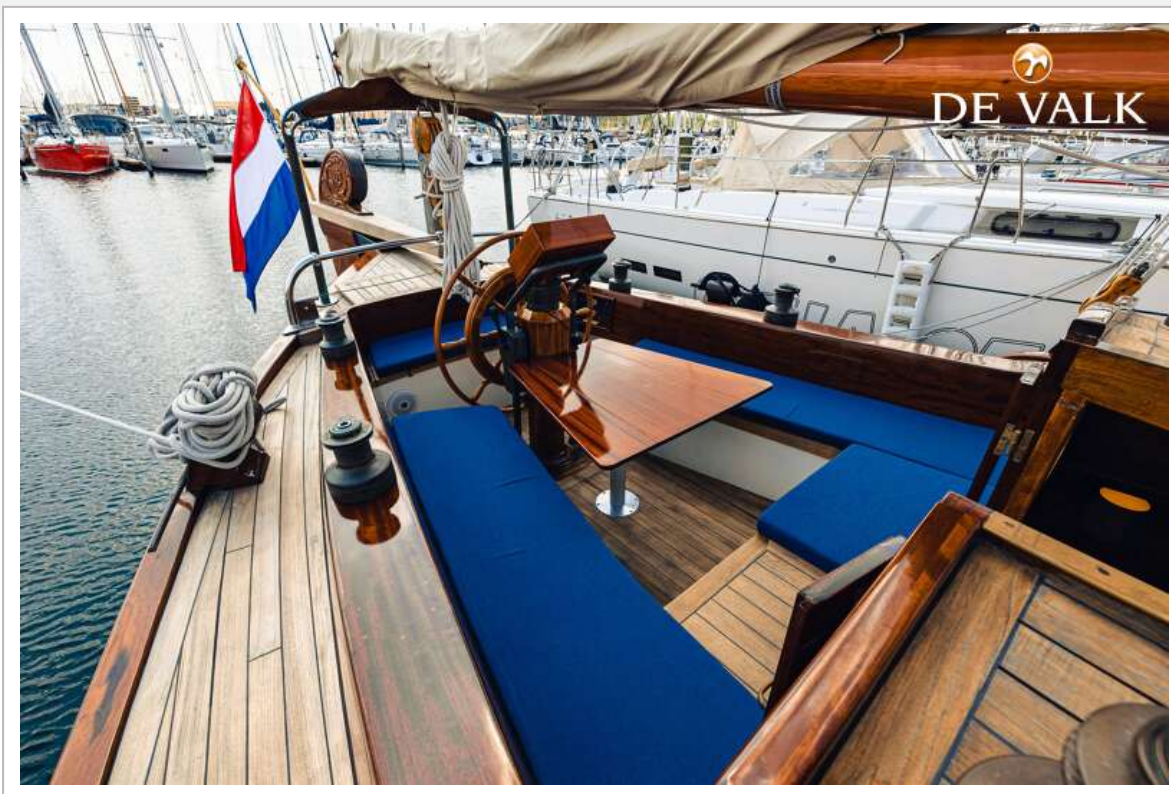




SCHOKKER 1600



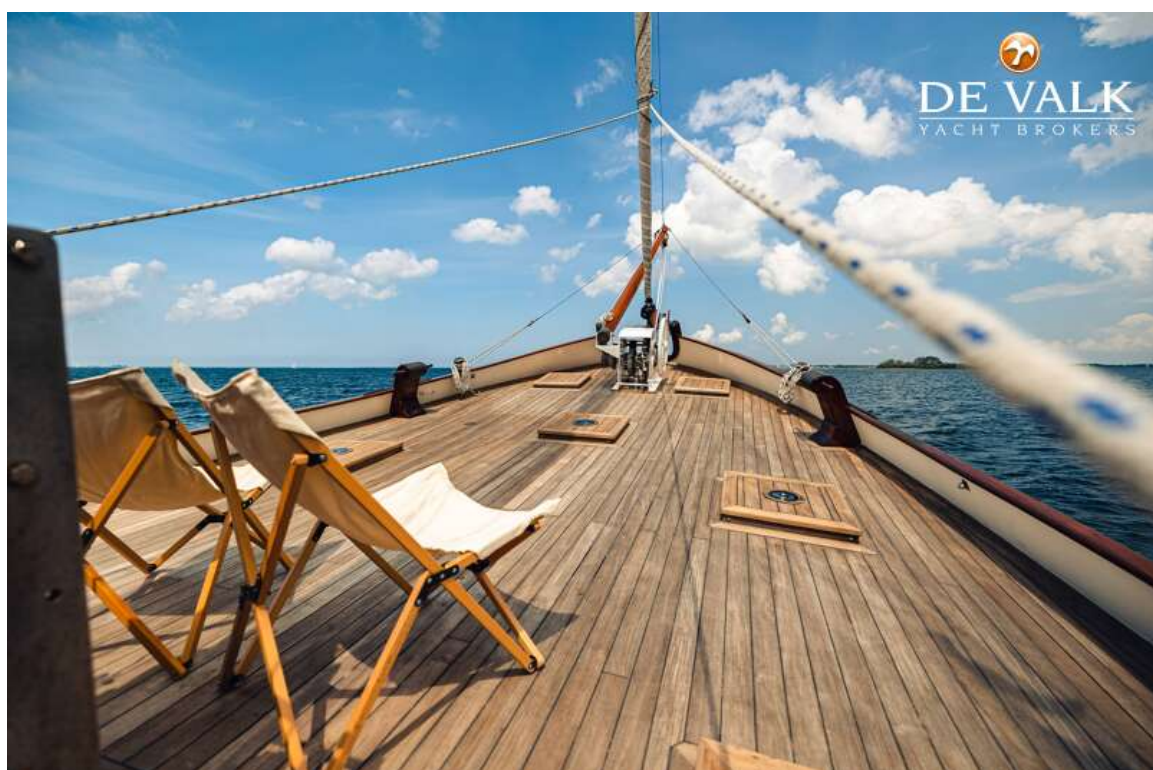
SCHOKKER 1600



SCHOKKER 1600



SCHOKKER 1600



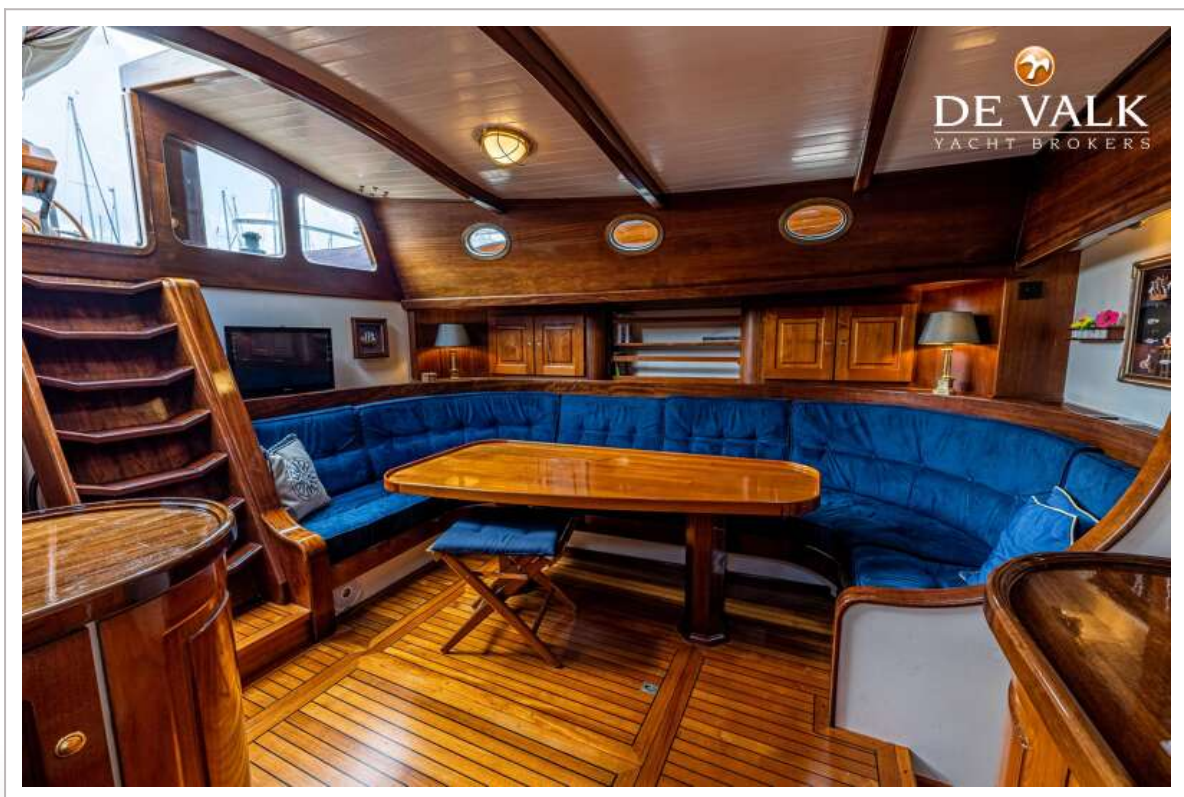
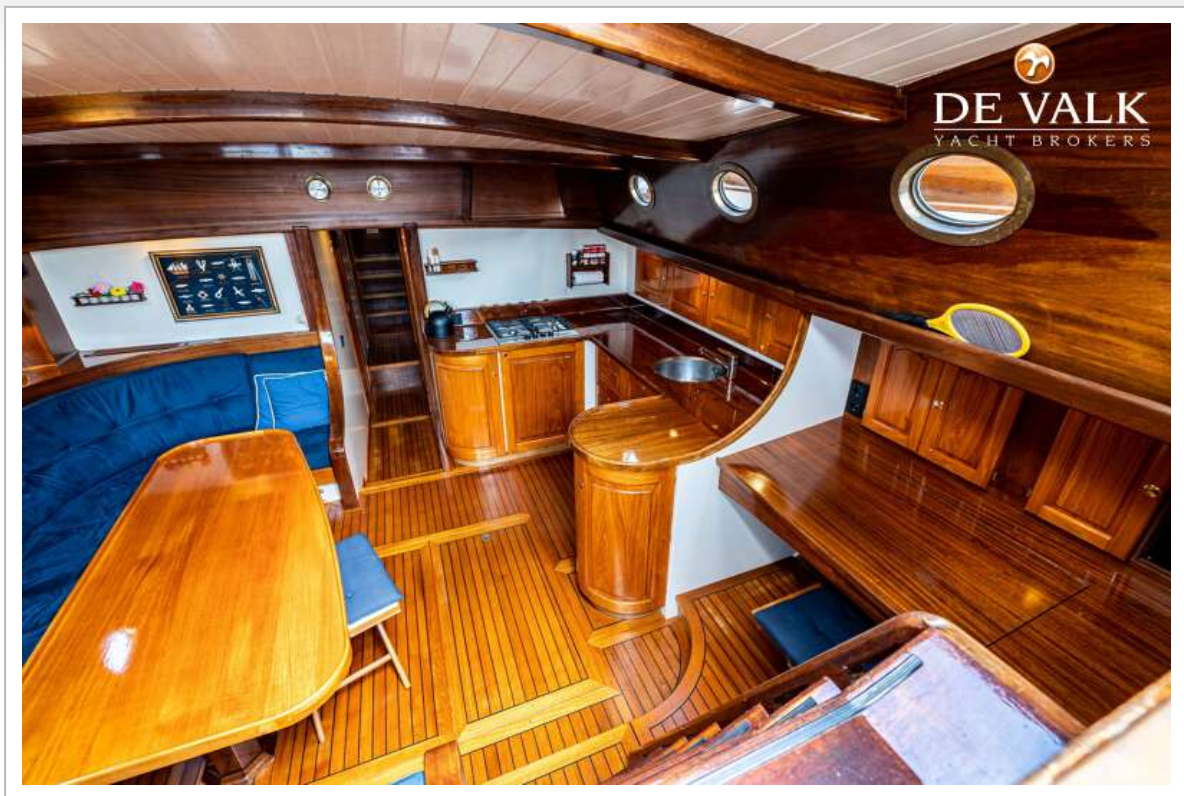
SCHOKKER 1600



SCHOKKER 1600



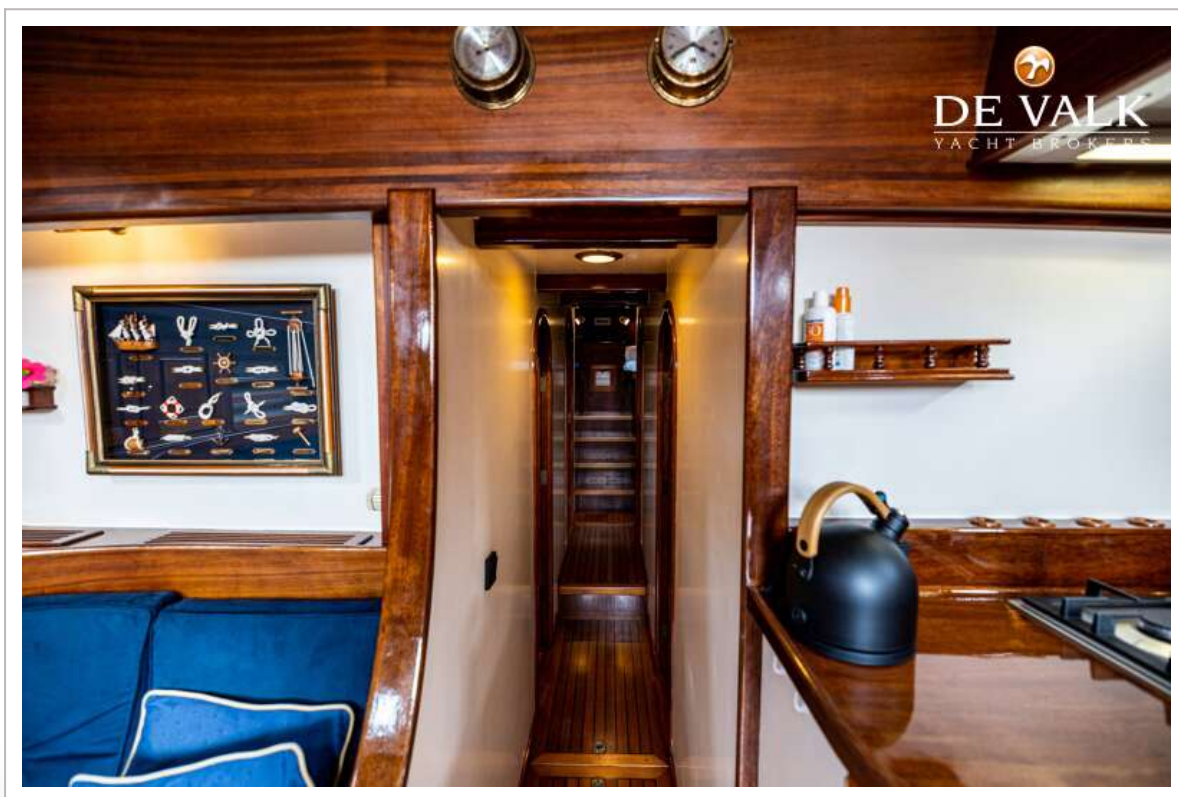
SCHOKKER 1600



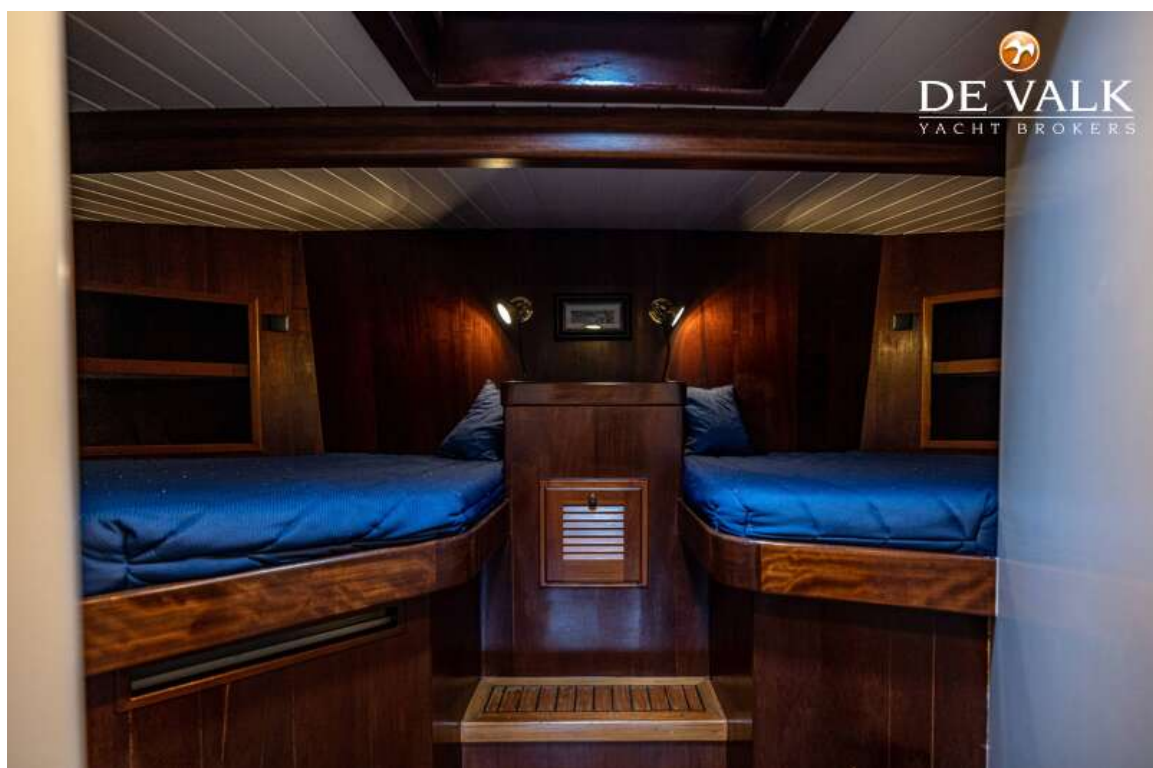
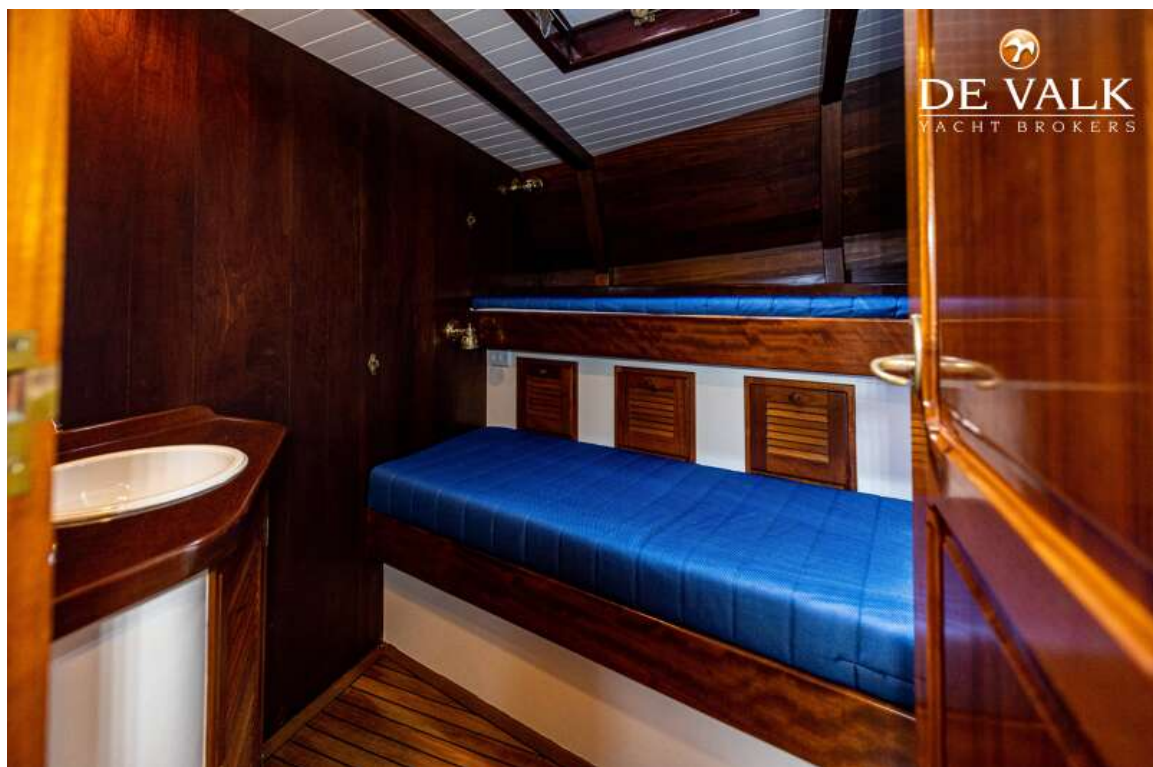
SCHOKKER 1600



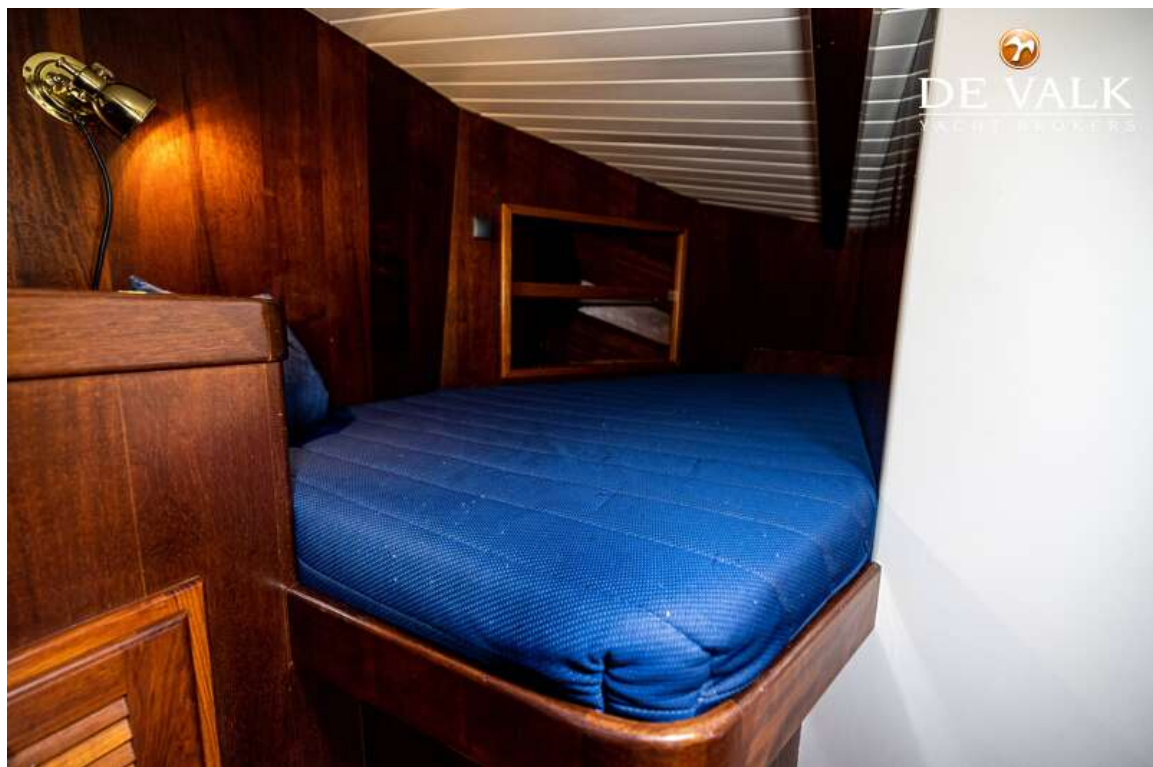
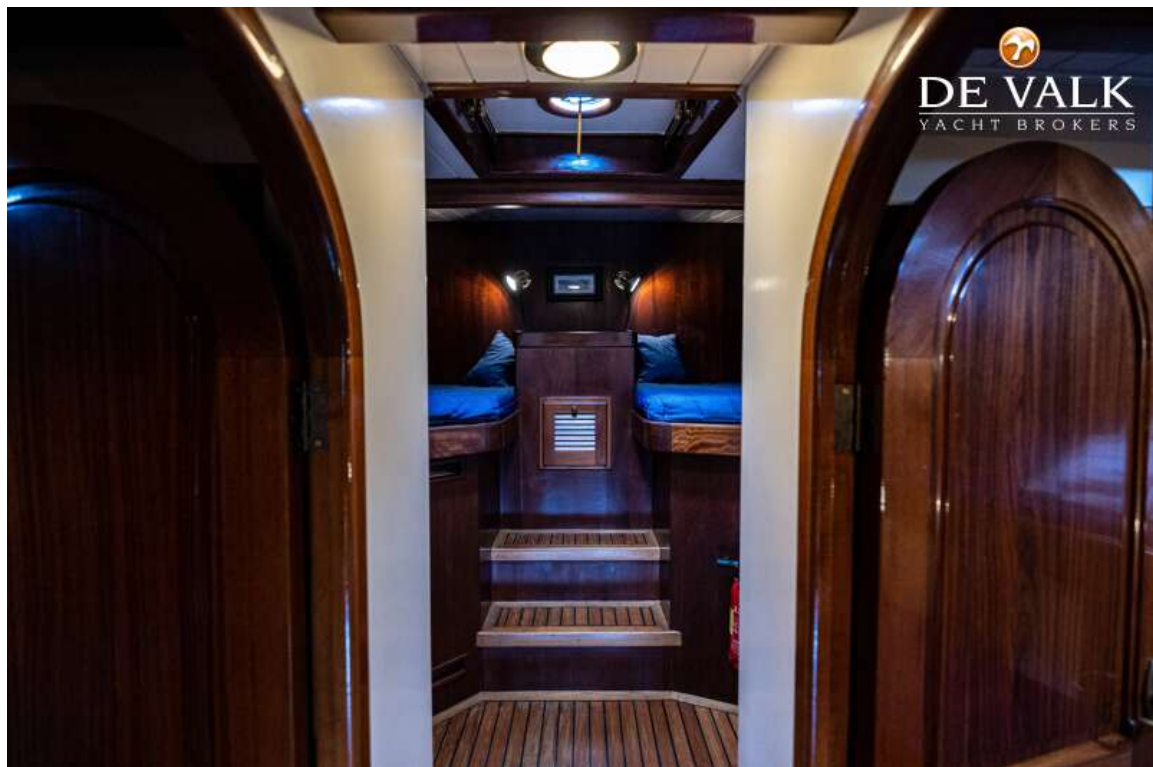
SCHOKKER 1600



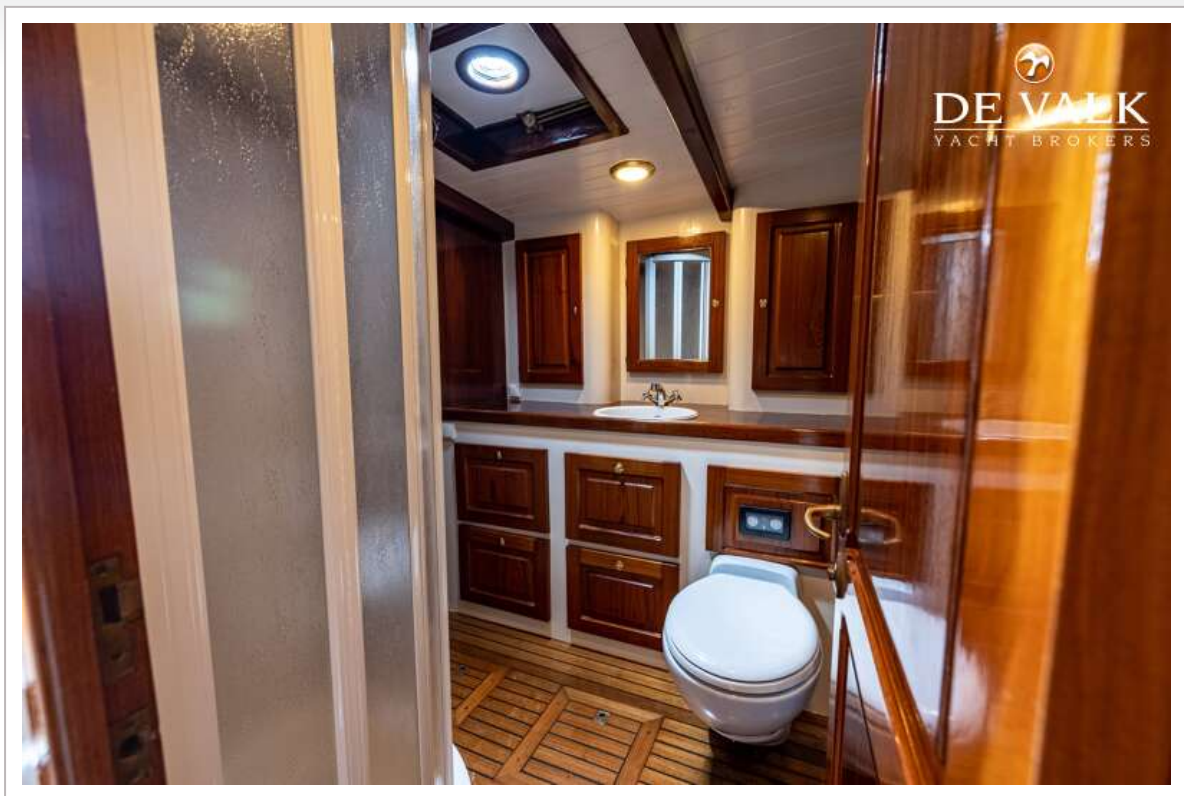
SCHOKKER 1600



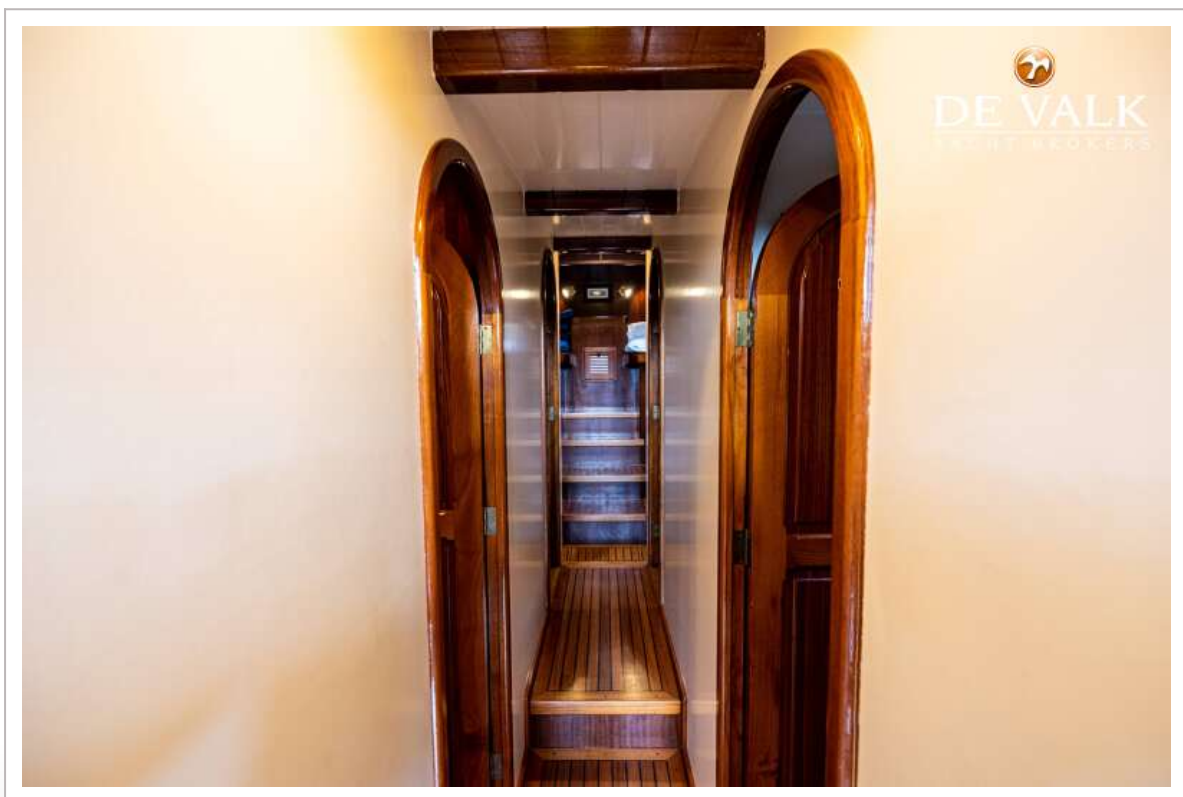
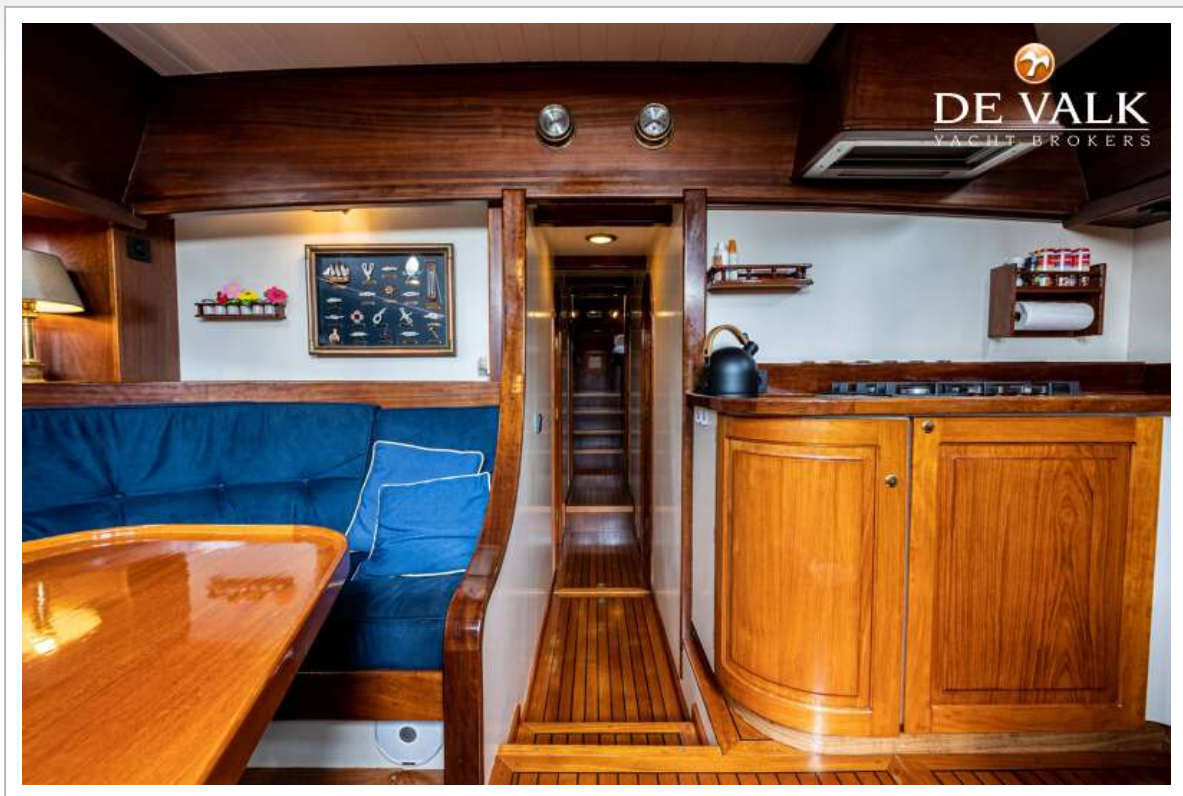
SCHOKKER 1600



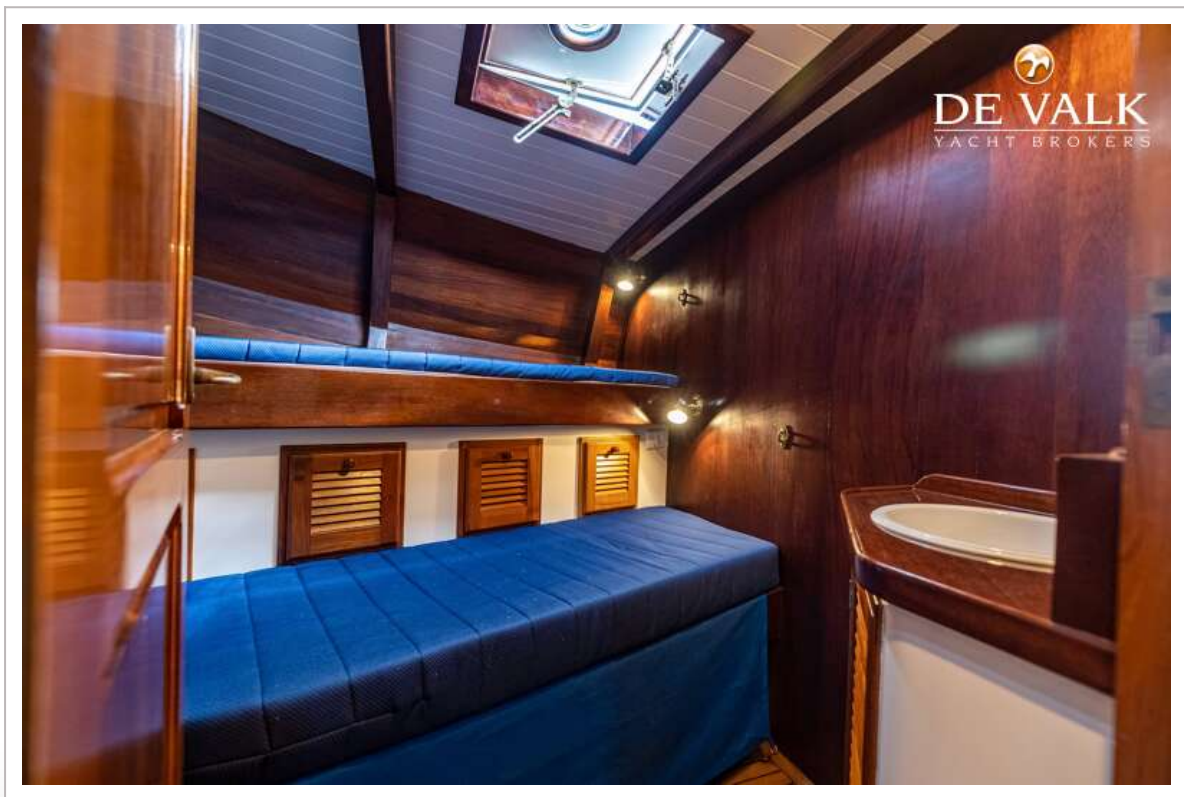
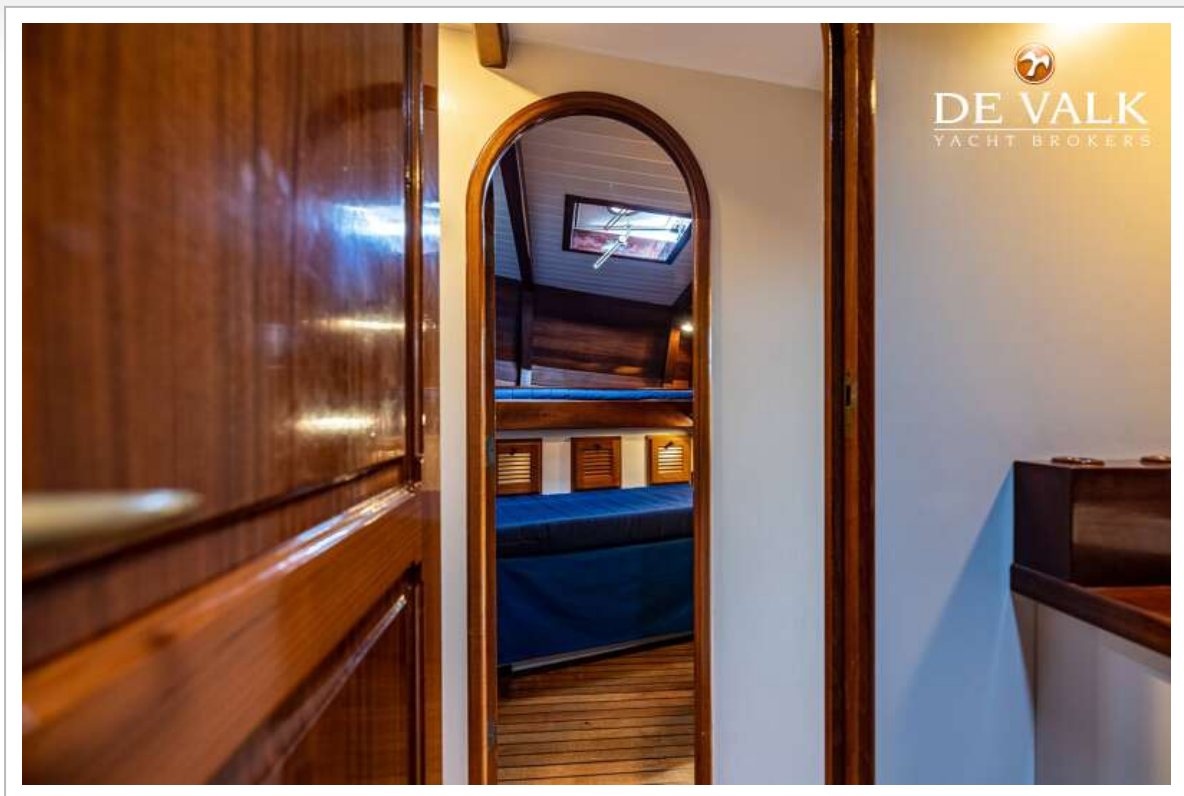
SCHOKKER 1600



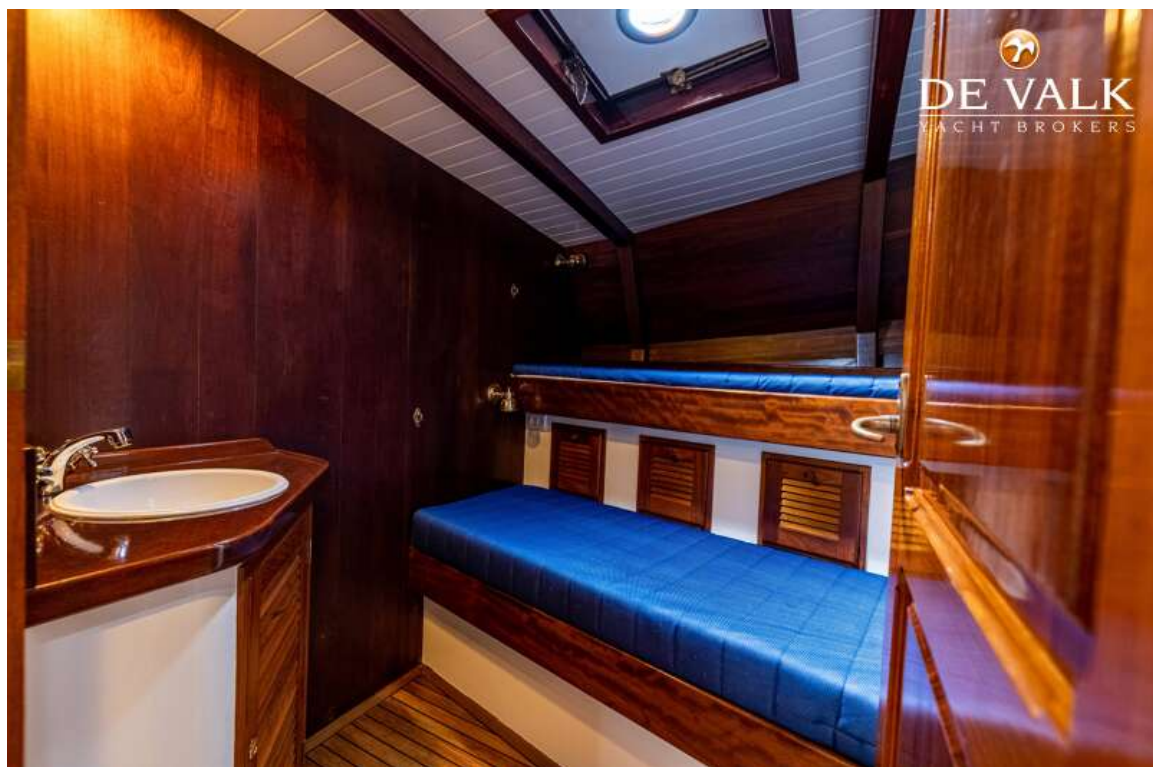
SCHOKKER 1600



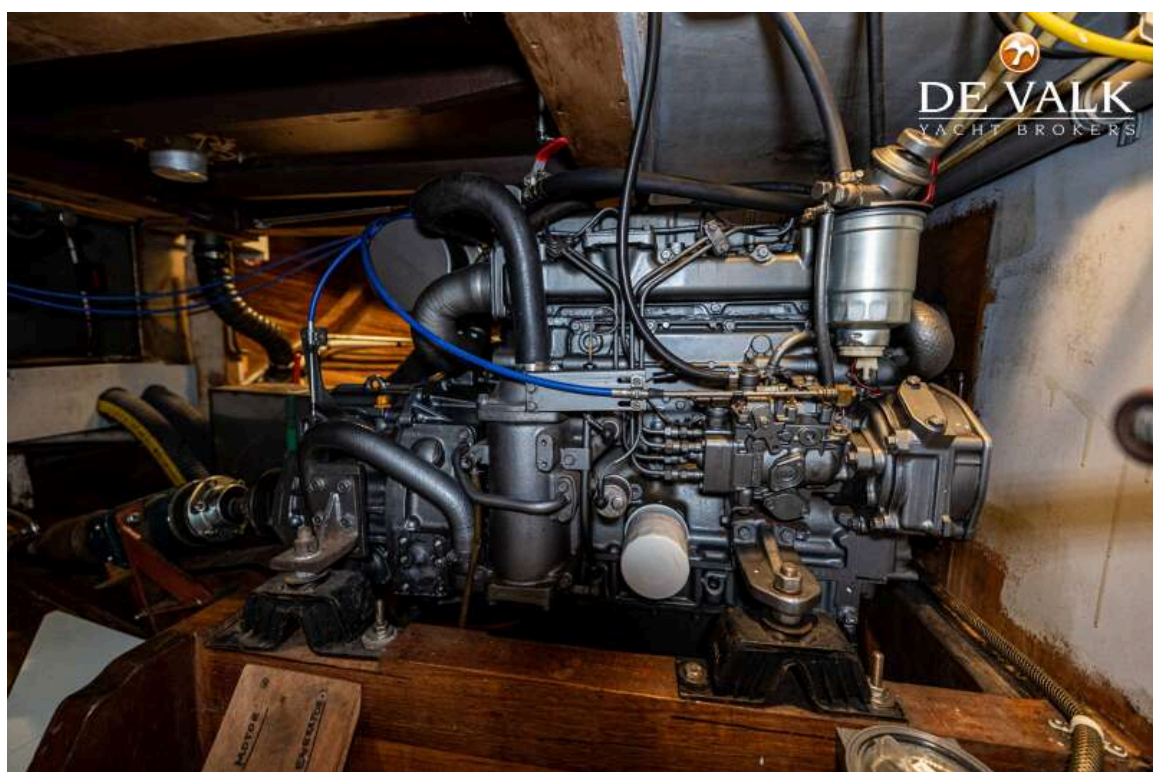
SCHOKKER 1600



SCHOKKER 1600



SCHOKKER 1600



SCHOKKER 1600

