



DE VALK
YACHT BROKERS



DUFOUR 525 GRAND LARGE



DE VALK
YACHT BROKERS

DUFOUR 525 GRAND LARGE

BROKER'S COMMENTS

The Dufour 525 Grand Large is a handsome, powerful, stable, and stiff yacht. The deck layout is configured so that it can be handled with a minimum crew. That's an important trait for a passage making cruiser to have, and the Dufour 525 Grand Large passes with flying colors. Owner is keen to sell urgently looking for buyer.

Eric Lamers

SPECIFICATIONS

Dimensions	15.32 x 4.90 x 2.00 (m)	Builder	DUFOUR
Built	2007	Cabins	3
Material	GRP	Berths	6
Engine(s)	1 x Volvo Penta D2-75 diesel	Hp/Kw	75.00 (hp), 55.20 (kw)
Asking price	sold (VAT)	Lying	contact Antibes

CONTACT

Sales office	De Valk Antibes	Telephone	+33 492 91 0202
Address	2, Avenue de Verdun 06600 Antibes FR	E-mail	antibes@devalk.nl

DISCLAIMER

These particulars are given in good faith as supplied but cannot be guaranteed.



DUFOUR 525 GRAND LARGE

GENERAL

Model	DUFOUR 525 GRAND LARGE
Type	sailing yacht
LOA (m)	15,32
Beam (m)	4,90
Draft (m)	2,00
Headroom (m)	2,00
Year built	2007
Builder	DUFOUR
Country	France
Displacement (t)	16,2
Ballast (tonnes)	cast iron 4,8
CE norm	A
Hull material	GRP
Hull colour	Off-white
Hull shape	Roundbilged
Keel type	Bulb keel
Superstructure material	GRP epoxy and foam core
Deck material	GRP
Deck finish	Teak
Cockpit deck finish	Teak
Antifouling (year)	2023
Window frame	Aluminium
Window material	Perspex
Portholes	Aluminium
Insulation	Foam
Fuel tank (litre)	250 Liters Starboard
Fuel tank 2 (litre)	250 Liters Port
Level indicator (fuel tank)	On both tanks
Freshwater tank (litre)	750 liters in three tanks
Level indicator (freshwater)	On each of the three tanks



DUFOUR 525 GRAND LARGE

Blackwater tank (litre)	Polyethylene
Blackwater tank extraction	Deck extraction
Wheel steering	cable steering Two steering wheels
Outside helm position	yes
Emergency tiller	yes

ACCOMMODATION

Cabins	3
Berths	6
Crew cabin	1
Crew berths	1
Interior	First grade moabi and Wenge. Ceiling lights and reading lamps
Layout	Linear Galley and three Cabin version with a large owner's cabin
Floor	Floors are made of Moabi
Headroom saloon (m)	1,92
Heating	Diesel ducted hot air
Air-conditioning	yes
Navigation center	Located to starboard at the foot of the companionway
Chart table	Full-size
Galley	yes
Countertop	Corian
Sink	Double sink
Cooker	Calor gas
Oven	yes
Microwave	yes
Fridge	With freezer compartment
Hot water system	220V + engine
Water pressure system	Electrical
Crockery	Dufour deluxe set
Owners cabin	yes
Bed length (m)	2m. Large double bed. New (2024) mattress



DUFOUR 525 GRAND LARGE

Wardrobe	Hanging / drawers / shelves
Bathroom	En suite
Toilet	En suite
Toilet system	Manual - Jabsco
Wash basin	In the bathroom
Shower	En suite
Guest cabin 1	Double bed
Bed length (m)	1,90
Wardrobe	Hanging / drawers / shelves
Bathroom	En suite
Toilet	En suite
Toilet system	Manual
Wash basin	In the bathroom
Shower	En suite
Guest cabin 2	Double bed
Bed length (m)	1,90
Wardrobe	Hanging / drawers / shelves
Bathroom	En suite
Toilet	En suite
Toilet system	Manual - Jabsco
Wash basin	In the bathroom
Shower	En suite
Washing machine	230 V

MACHINERY

No of engines	1
Make	Volvo Penta
Type	D2-75
HP	75
kW	55.20
Fuel	diesel



DUFOUR 525 GRAND LARGE

Year installed	2021
Cruising speed (kn)	6
Consumption (l/hr)	5
Engine hours	332
Engine cooling system	freshwater heat exchanger
Drive	sail-drive
Engine controls	yes
Bowthruster	Electric Max Power - Compact Retract 24 Volt
Propeller type	feathering
Manual bilge pump	yes
Electric bilge pump	yes
Bilge alarm	yes
Generator	Fisher Panda 7 kW
Start battery	Volvo, 12 Volts, 80 Amphours
Service battery	4 batteries, each 172 Amphours at 12 Volts, Deepcycle AGM
Generator battery	12 Volts
Bowthruster battery	12 Volts
Windlass battery	12 Volts
Battery monitor	MasterVolt Battery Monitor BTM - III
Battery charger	Victron Energy - Centaur battery Charger 12 Volts 80 Amps
Inverter	Victron Energy – Phoenix Inverter Compact 12 V to 230 V -
Wind generator	SilentWindPro (400 Watt maximum)
Solar panel	Six solar panels Victron Energy - BlueSolar
Shorepower	with cable
Watermaker	Duo D100 by Desalinator (100 liters per hour)

NAVIGATION

Compass	Magnetic compass at the helm
Electric compass	Raymarine Fluxgate
Depth sounder	Coupled to Raymarine ST7001 Plus
Depth sounder/log	Coupled to Raymarine ST7001 Plus



DUFOUR 525 GRAND LARGE

Log	Coupled to Raymarine ST7001 Plus
Windset	Coupled to Raymarine ST7001 Plus
Repeater	Coupled to Raymarine ST7001 Plus
Fish finder	Integrated in the Garmin GPSMAP 723xsv
VHF	In Cabin at the chart table
VHF handheld	Second VHF radio at the helm
Autopilot	Electrical motor coupled to Raymarine
Rudder angle indicator	Coupled to Raymarine
Radar	Coupled to Raymarine
GPS	Coupled to Raymarine
Plotter	2 independent systems: Garmin GPSMAP 723xsv - Raymarine ST7001 P
Radar/GPS	Coupled to Raymarine
PC connection	WiFi router
Electronic chart(s)	Both Raymarine and Garmin
AIS transponder	Linked to the Garmin chart plotter
Radio receiver	IC-M801E Icon MF and HF Marine Radio
Transmitter	IC-M801E Icon MF and HF Marine Radio
EPIRB	Kannad Marine, new batteries in June 2024

EQUIPMENT

Sprayhood	yes
Bimini	New 2024
Sun awning	yes
Cockpit cushions	yes
Cockpit table	Teak
Bathing platform	Folds out of the stern
Boarding ladder	Stainless steel Side ladder, swimming ladder
Transom door	Becomes the swimming platform
Gangway	Both a long and short version
Deck shower	Hot & cold water at the swimming platform



DUFOUR 525 GRAND LARGE

Anchor	Delta
Anchor chain	85 meters
Anchor 2	Danforth
Windlass	Electrical
Dinghy	yes
Outboard	yes
Davits	Stainless steel
Davits controls	Manual
Sea railing	Wire
Life raft	Valise (or bag)
Lifejackets	6
Safety harness	6
Safety lines on deck	Port & Starboard
Horn	yes
Fenders	Eight cylindrical and one large ball
Mooring lines	8
Spare parts	Some
Tools	yes
TV	yes
TV receiver	yes
Radio	yes
Speakers in cabin	yes
Fire extinguisher	yes

RIGGING

Rigging	fractional with backstays
Material mast	aluminium
Mainsail	59,5 m2
Stoway mast	yes
Genoa	68,8 m2
Genoa I	yes



DUFOUR 525 GRAND LARGE

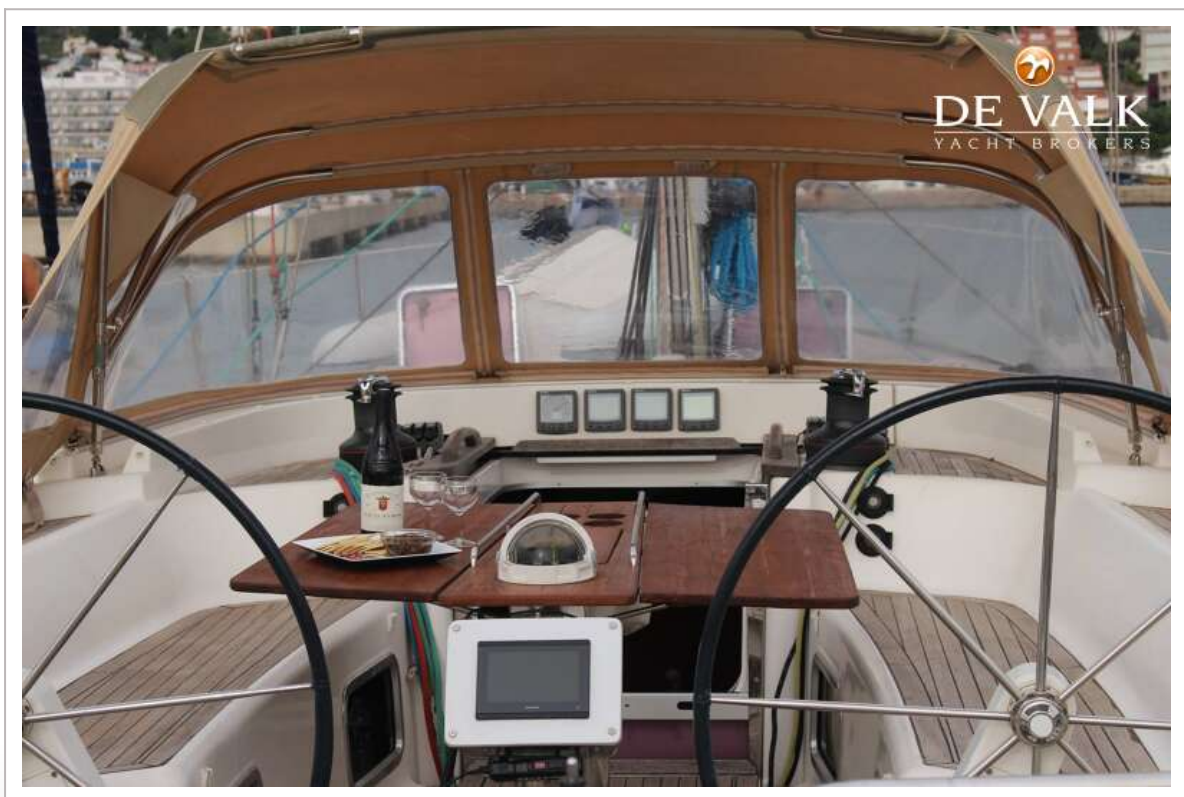
Genoa furler	Mechanical (Rope and drum)
Gennaker	yes
Spinnaker	yes
Reefing System	Main in-mast furling
Backstay adjuster	Hydraulic
Boomvang	Mechanical
Primary sheet winch	Two Harken Electric Ratio 53
Genoa sheetwinches	Two Harken Electric Ratio 60.2
Halyard winches	Two Harken Electric Ratio 48 and one Harken Manual on the mast
Spi-pole	Aluminium



DUFOUR 525 GRAND LARGE



DUFOUR 525 GRAND LARGE



DUFOUR 525 GRAND LARGE



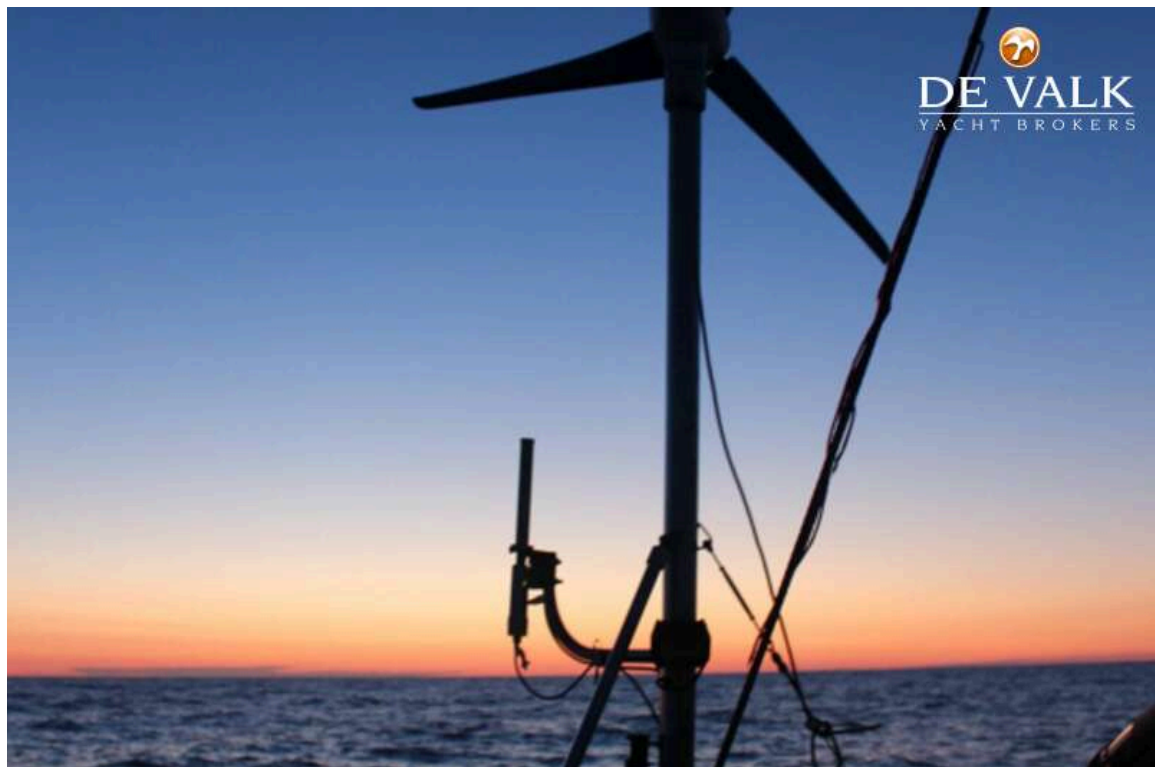
DUFOUR 525 GRAND LARGE



DUFOUR 525 GRAND LARGE



DUFOUR 525 GRAND LARGE



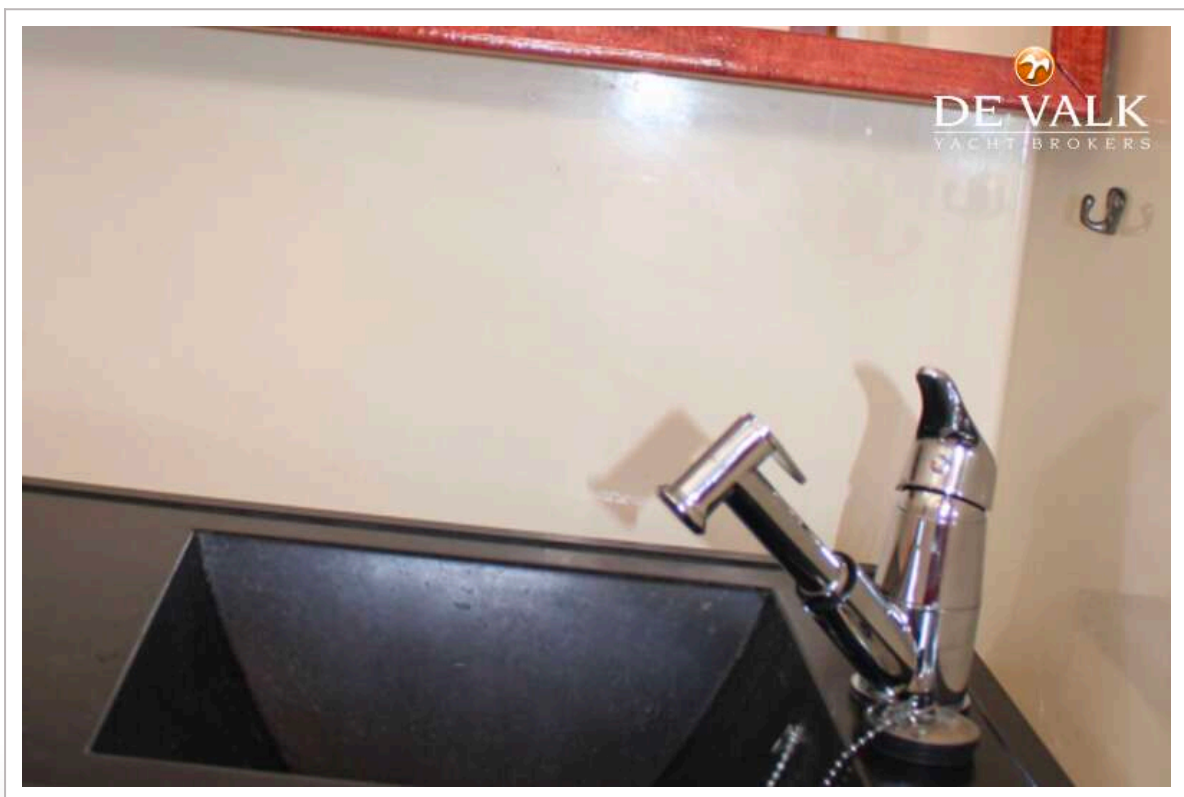
DUFOUR 525 GRAND LARGE



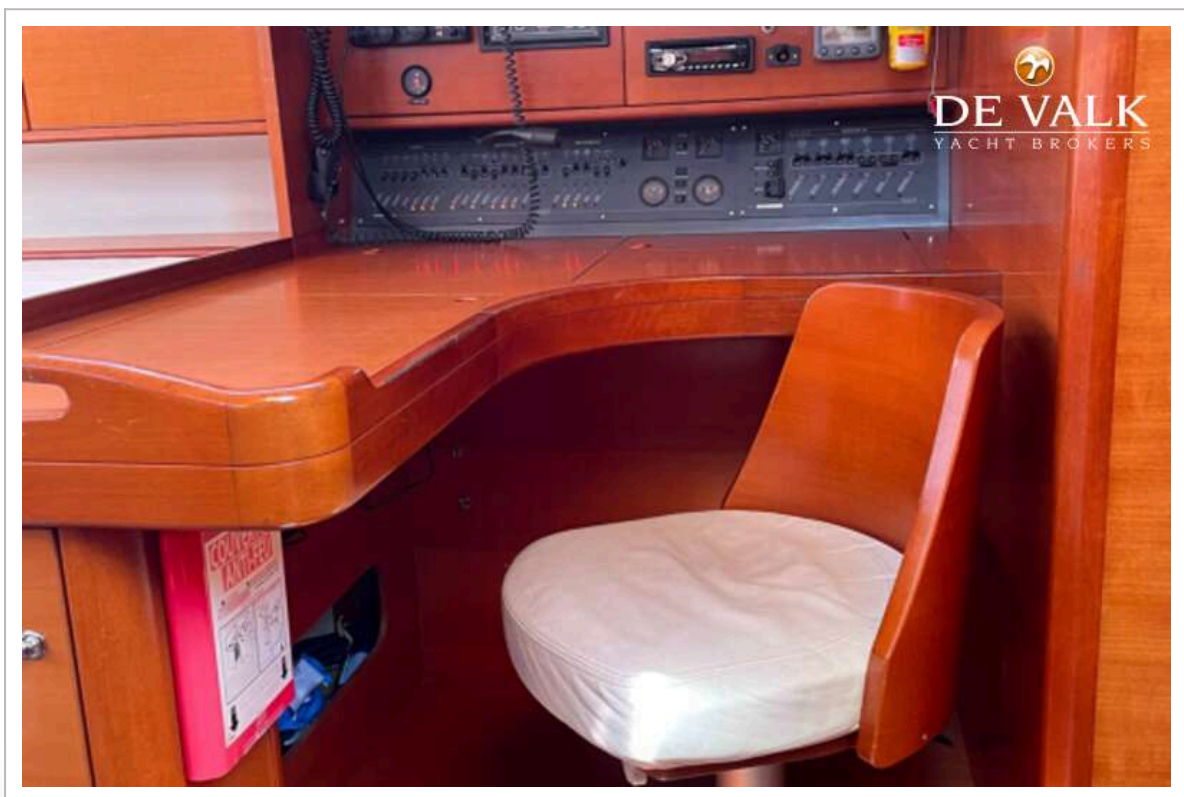
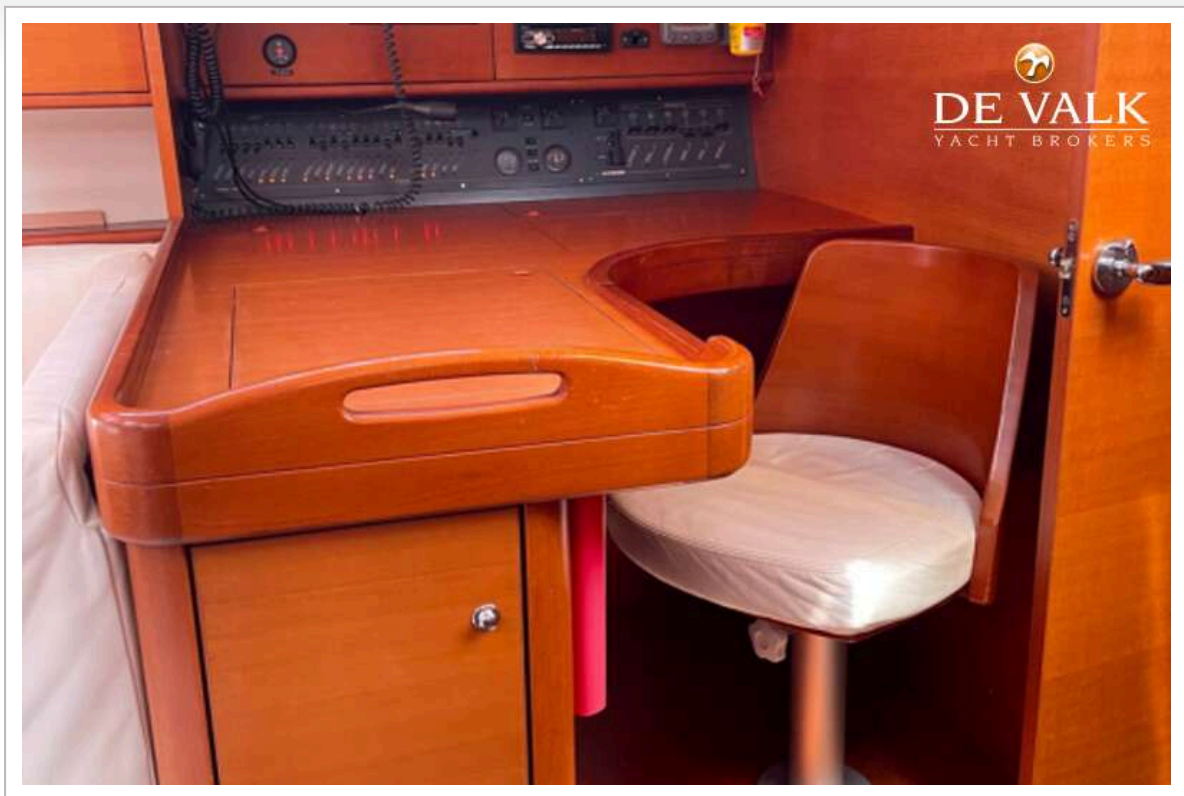
DUFOUR 525 GRAND LARGE



DUFOUR 525 GRAND LARGE



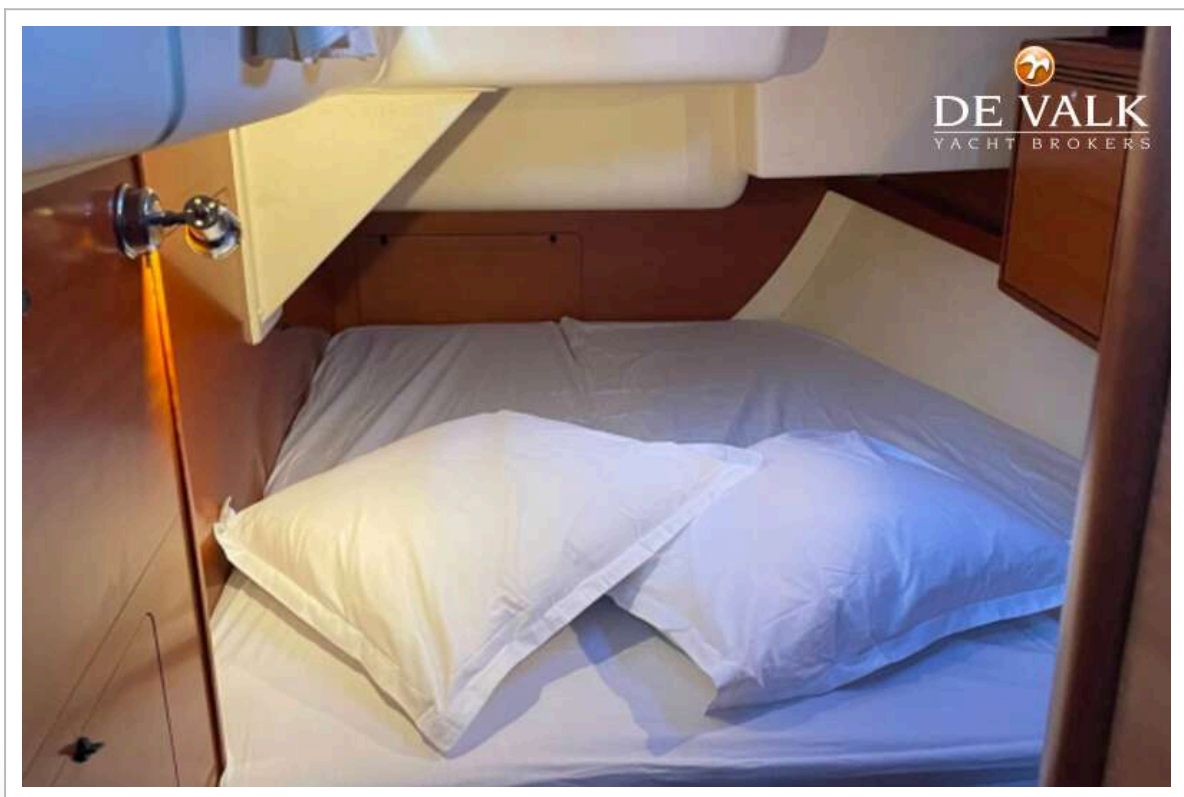
DUFOUR 525 GRAND LARGE



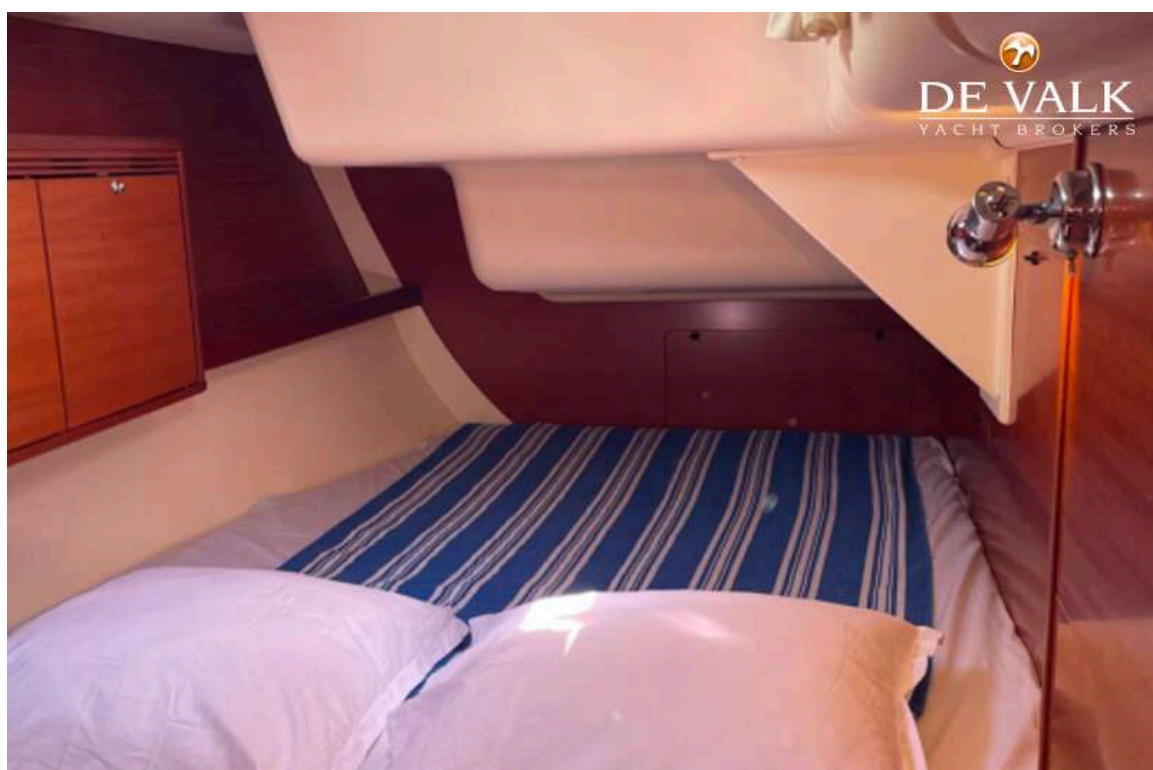
DUFOUR 525 GRAND LARGE



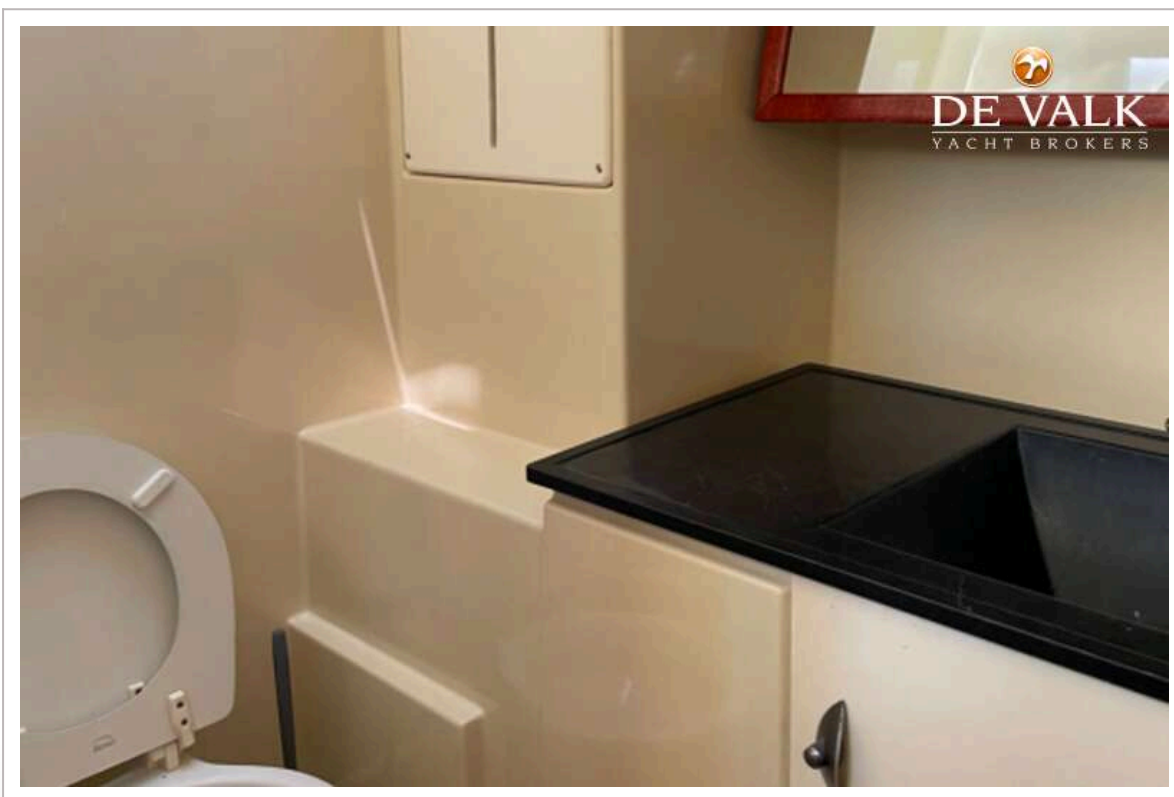
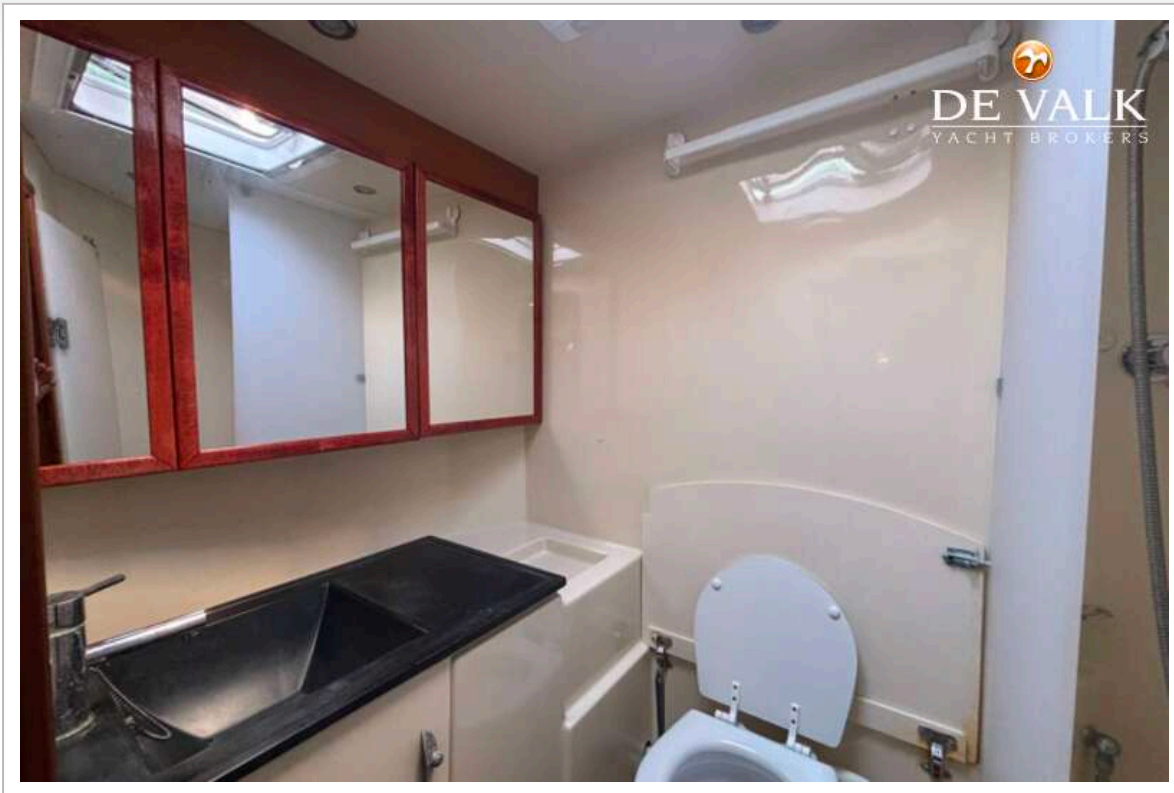
DUFOUR 525 GRAND LARGE



DUFOUR 525 GRAND LARGE



DUFOUR 525 GRAND LARGE



DUFOUR 525 GRAND LARGE

