



DE VALK
YACHT BROKERS



NORDSHIP 35 DS



DE VALK
YACHT BROKERS

BROKER'S COMMENTS

The Nordship 35 DS is a good example of a quality yacht with a clever layout with maximum space and comfort. This beautiful decksaloon is finished to the highest standards and offers all the comfort you could be looking for. She offers a sheltered steering position together with a comfortable deck saloon for all weather sailing. Her relatively shallow draft makes it also possible to pass most of the Dutch inland waters. She is located at our sales office in Sint Annaland and can be visited 7 days a week.

Joris van de Rijt

SPECIFICATIONS

Dimensions	10.80 x 3.30 x 1.68 (m)	Builder	Nordship
Built	2002	Cabins	2
Material	GRP	Berths	4
Engine(s)	1 x Volvo Penta MD 2040 diesel	Hp/Kw	40.00 (hp), 29.44 (kw)
Asking price	sold (VAT)	Lying	at sales office

CONTACT

Sales office	De Valk Sint Annaland B.V.	Telephone	+31 (0)166 601 000
Address	Koelhuisweg 4 4697 RM Sint Annaland NL	E-mail	sintannaland@devalk.nl

DISCLAIMER

These particulars are given in good faith as supplied but cannot be guaranteed.



GENERAL

Model	NORDSHIP 35 DS
Type	sailing yacht
LOA (m)	10,80
LWL (m)	8,70
Beam (m)	3,30
Draft (m)	1,68
Headroom (m)	1,85
Year built	2002
Builder	Nordship
Country	Denmark
Designer	Lars Buchwald
Displacement (t)	5,8
Ballast (tonnes)	lead 2,4
CE norm	A
Hull material	GRP
Hull colour	white
Hull shape	round-bilged
Keel type	fin keel
Superstructure material	GRP
Rubbing strake	Teak
Deck material	GRP
Deck finish	teak
Superstructure deck finish	TBS non-skid profile mats
Cockpit deck finish	teak
Antifouling (year)	2024
Dorades	2 x
Window frame	aluminium
Window material	tempered glass
Deckhatch	2 x
Fuel tank (litre)	stainless steel 170



Level indicator (fuel tank)	yes
Freshwater tank (litre)	stainless steel 270
Level indicator (freshwater)	yes
Blackwater tank (litre)	70
Blackwater tank extraction	deck extraction + uw line
Wheel steering	Whitlock
Emergency tiller	yes

ACCOMMODATION

Cabins	2
Berths	4
Interior	mahogany
Floor	carpet (new 2017) + teak and holly under carpet
Deck saloon	yes
Saloon	New upholstery in saloon 2017
Headroom saloon (m)	1,85 at entrance
Heating	diesel ducted hot air Eberspacher D4
Chart table	On starboard side in deck saloon with a loose seat
Aft Cabin	yes
Dinette	yes
Galley	On starboard
Countertop	plastic
Sink	stainless steel 2 x
Cooker	calor gas Eno 2 burner with electric gas switch
Oven	yes
Fridge	Isotherm toploader
Hot water system	220V + engine
Water pressure system	electrical
Owners cabin	v-bed With extra topper (2019) and slatted frame
Bed length (m)	2,15
Wardrobe	drawers and shelves On both sides



Bathroom	shared
Toilet	shared
Toilet system	manual Jabsco
Wash basin	in the bathroom
Shower	shared
Guest cabin 1	double bed
Bed length (m)	1,90 x 1,70
Wardrobe	shelves

MACHINERY

No of engines	1
Make	Volvo Penta
Type	MD 2040
HP	40
kW	29.44
Fuel	diesel
Year installed	2002
Engine cooling system	freshwater heat exchanger
Drive	sail-drive
Saildrive seal	2022
Engine controls	bowden cable (outside + inside)
Gearbox	mechanical
Bowthruster	electric 4hp
Propeller type	folding
Propeller blades	3
Manual bilge pump	yes
Electric bilge pump	yes
Electrical installation	12V / 220V
Start battery	1 x 70Ah (2021)
Service battery	3 x AGM 100Ah (2021)
Battery monitor	Victron BMV-712 (2021)



Battery charger	Fraron 12/30 (2021)
Solar panel	Phaesun removable 120W (2020)
Shorepower	with cable
Extra info	More powerfull engine (MD 2040) than standard (MD 2030)
Extra info	Extra 220V sockets in bathroom, pantry and saloon
Extra info	Gas system survey, new hoses, new gas pressure regulator 2022

NAVIGATION

Compass	On helm
Depth sounder/log	Raymarine ST60
Windset	Raymarine ST60
VHF	M-Tech with cockpit connection (2014)
Autopilot	Raymarine ST5000+ with extra control at charttable
Plotter	Lowrance HDS7m (2014)
Electronis chart(s)	yes
AIS transponder	Wheatherdock easy TRX2ISGPS (2017)
Navigation lights	(new 3 colour + anchor LED 2019)

EQUIPMENT

Sprayhood with grab rail	yes
Cockpit cover	yes
Cockpit table	yes
Bathing platform	yes
Boarding ladder	stainless steel 4 steps (standard 3) (2018)
Bow ladder	Stainless steel
Deck shower	Hot + cold (new hoses + shower head 2023)
Anchor	Bruce
Anchor chain	yes
Windlass	manual
Capstan	On windlass



Sea railing	wire
Grab rail (superstructure)	teak
Pushpit	yes
Pulpit	yes
Lifebuoy	yes
Danbuoy	yes
Wiper	1 x on starboard window
Radar reflector	yes
Fenders	+ ball Fenders
Mooring lines	yes
Radio-cd player	Creasono
Cockpit speakers	yes
Speakers in salon	yes
Clock - barometer	yes
Fire extinguisher	3 x

RIGGING

Rigging	sloop
Standing rigging	wire (2013)
Brand mast	John mast
Material mast	aluminium
Spreaders	2 sets
Mainsail	Elvström, 29m², DCX Light (2017)
Mainsail cover	Elvström Lazybag (2017)
Jib	Elvström 20m², Epex (2017) on self tacking Jib installation
Genoa furler	yes
Genoa cover	Elvström (2017)
Code Zero	Elvström, 45m², Radial Laminate (2017) With furler
Gennaker	Wiith squeezer
Self tacking jib installation	yes
Reefing System	slabreefing



Backstay adjuster	mechanical Selden
Boomvang	gasspring
Genoa sheetwinches	2 x Andersen 40ST
Halyard winches	2 x Andersen 28ST
Reefing winch	Andersen on mast
Spi-pole	aluminium
Extra info	All Hallyards new 2018



NORDSHIP 35 DS



NORDSHIP 35 DS



NORDSHIP 35 DS



NORDSHIP 35 DS



NORDSHIP 35 DS



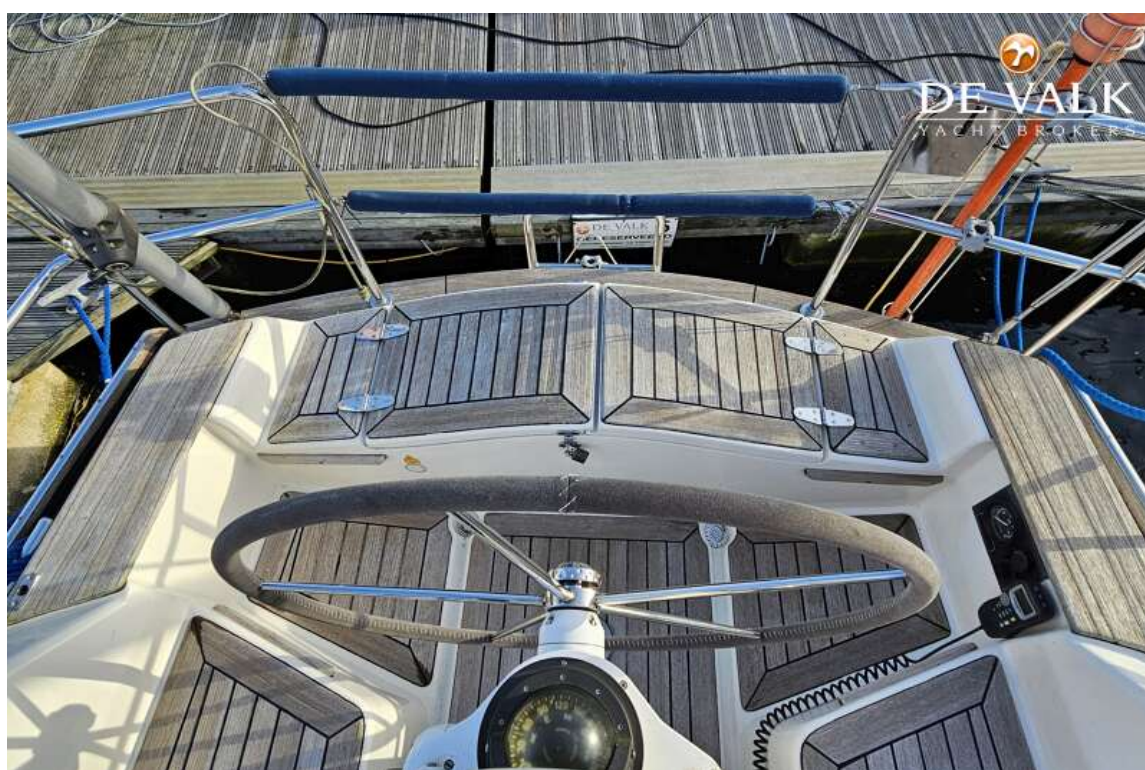
NORDSHIP 35 DS



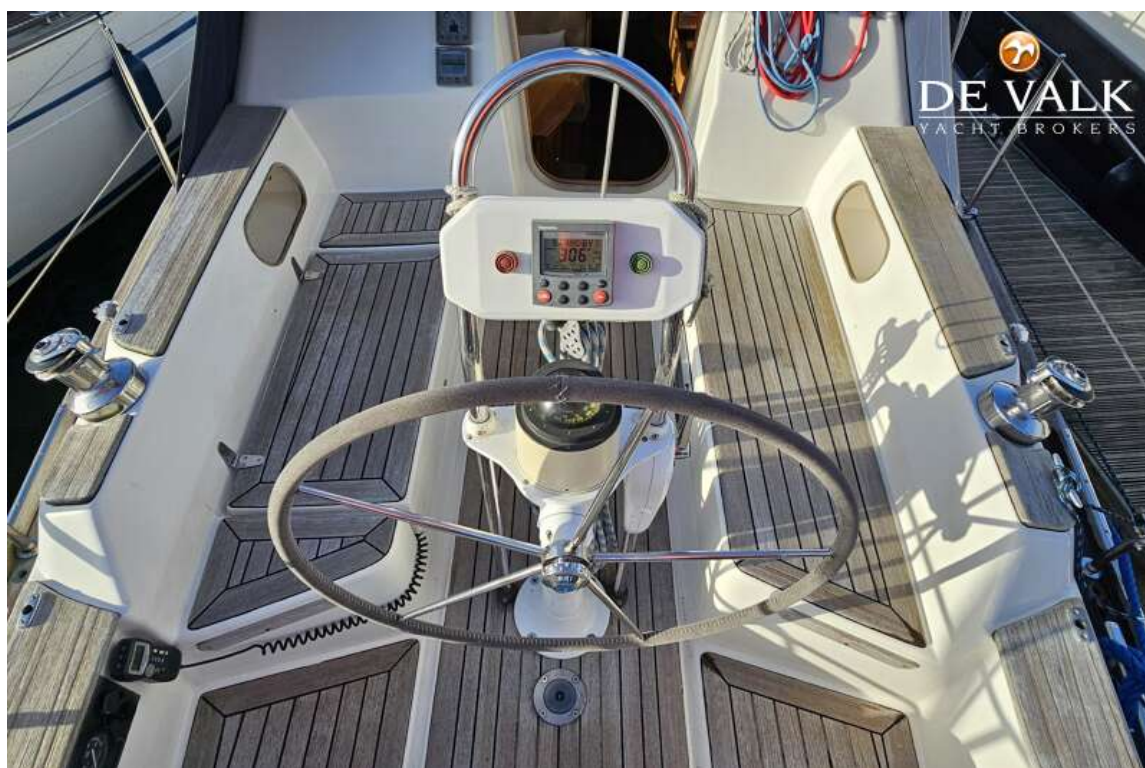
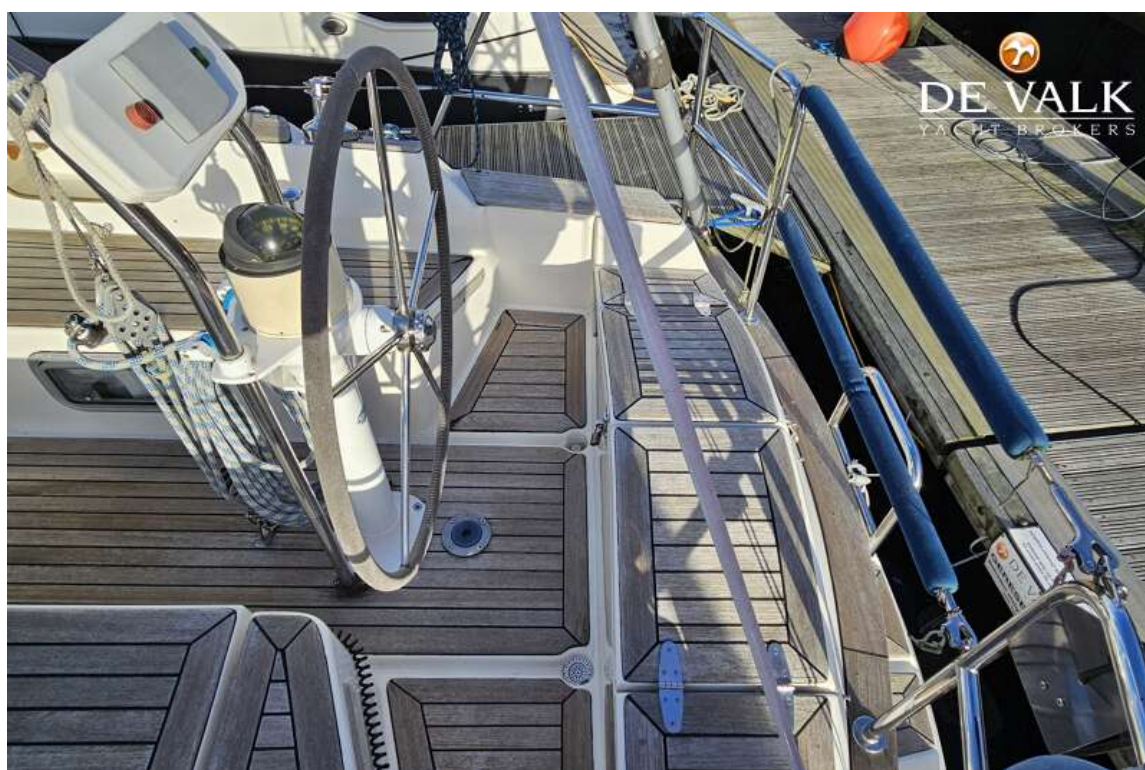
NORDSHIP 35 DS



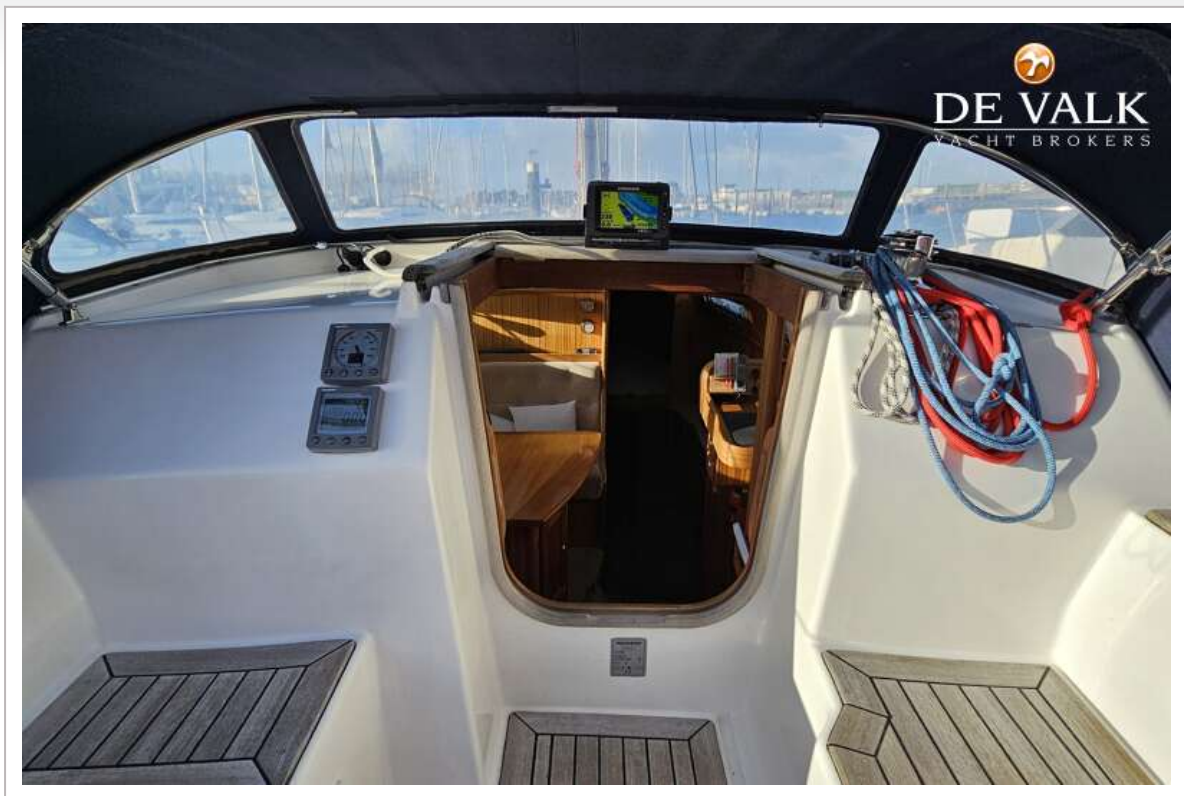
NORDSHIP 35 DS



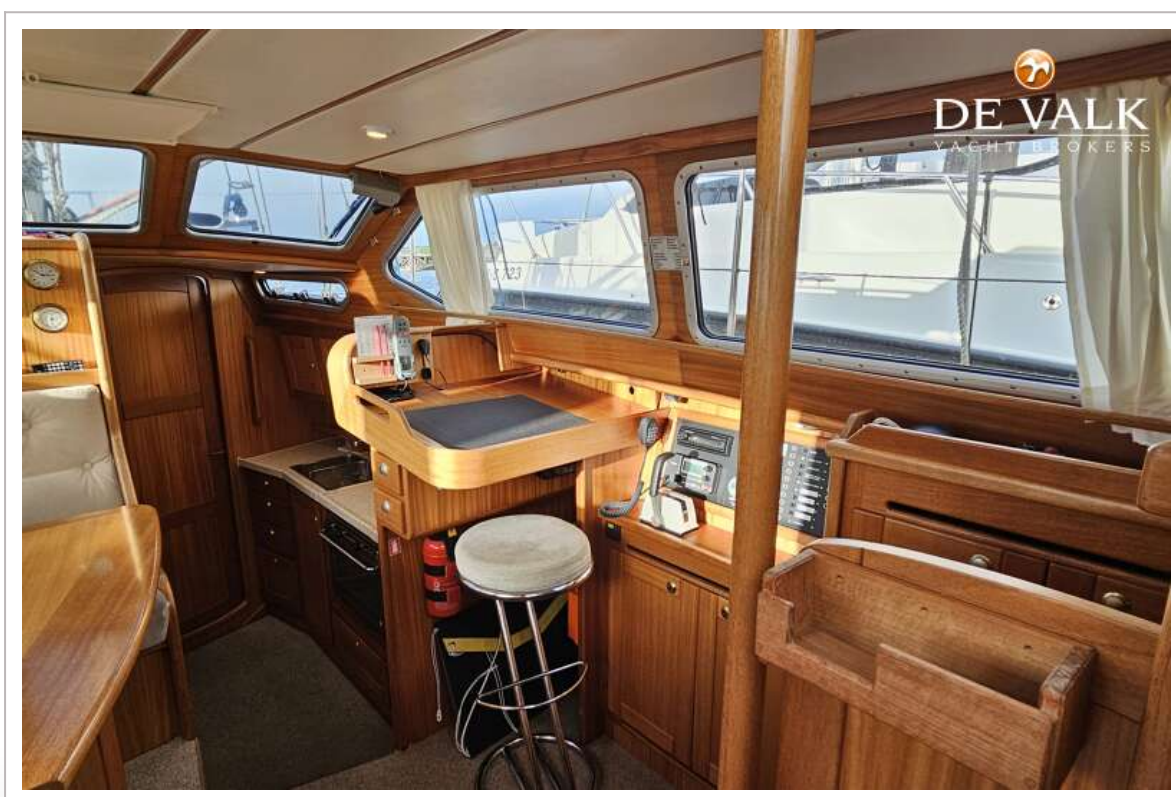
NORDSHIP 35 DS



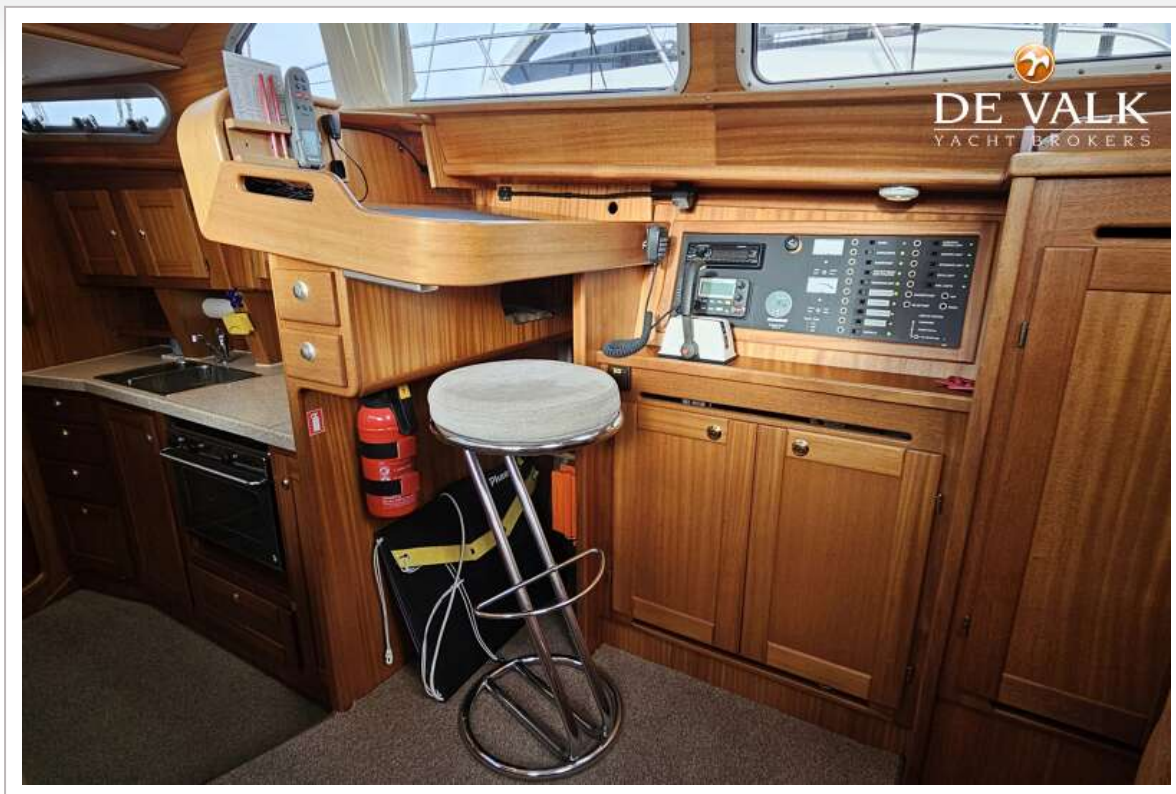
NORDSHIP 35 DS



NORDSHIP 35 DS



NORDSHIP 35 DS



NORDSHIP 35 DS



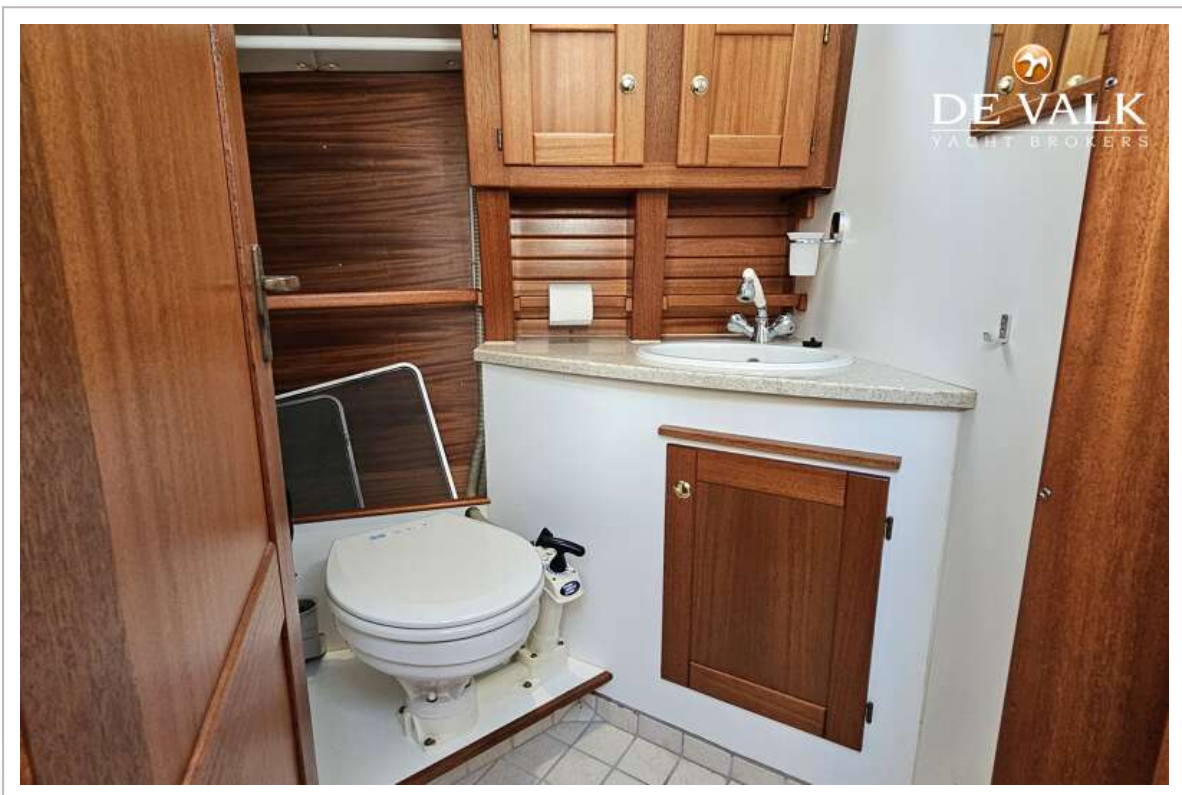
NORDSHIP 35 DS



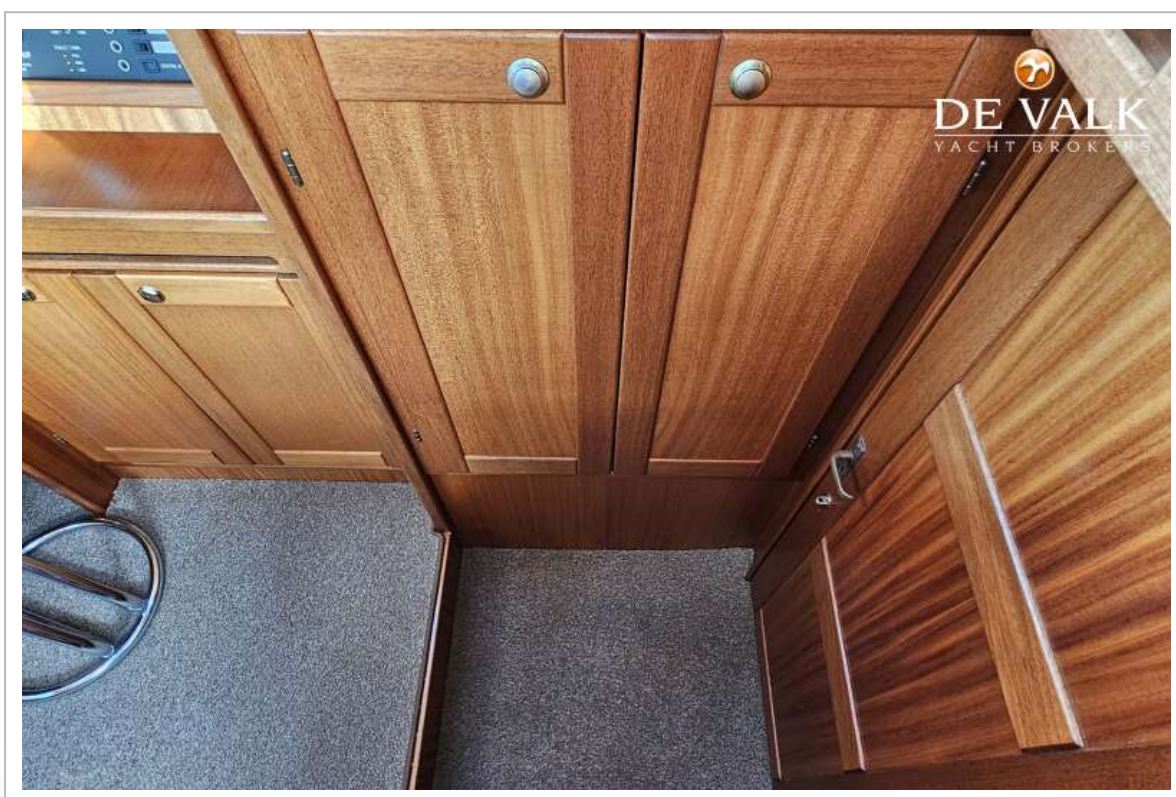
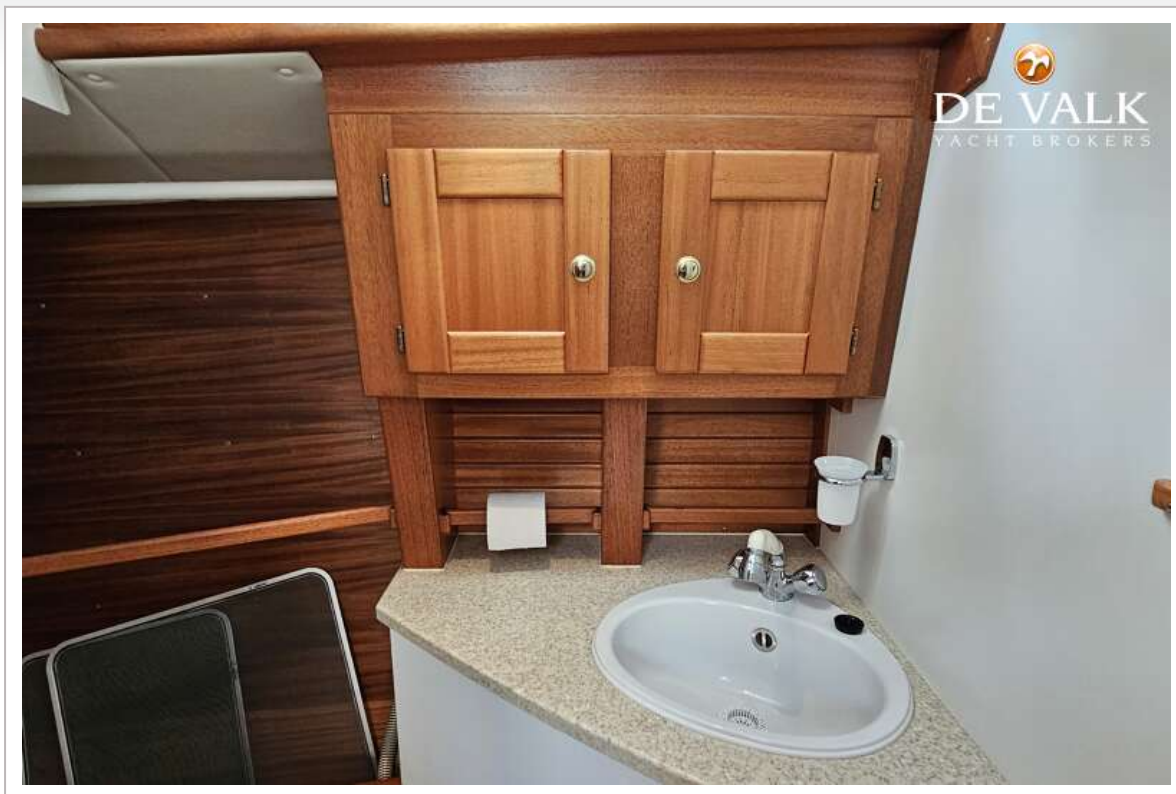
NORDSHIP 35 DS



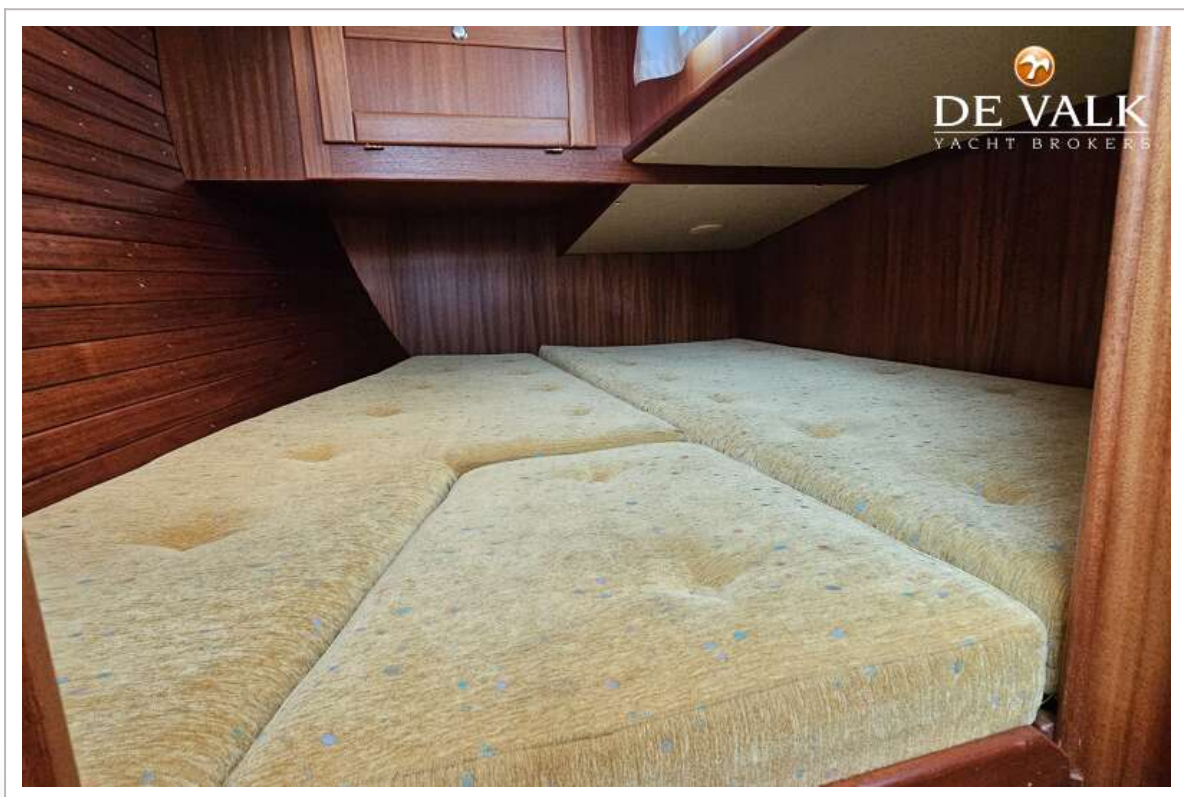
NORDSHIP 35 DS



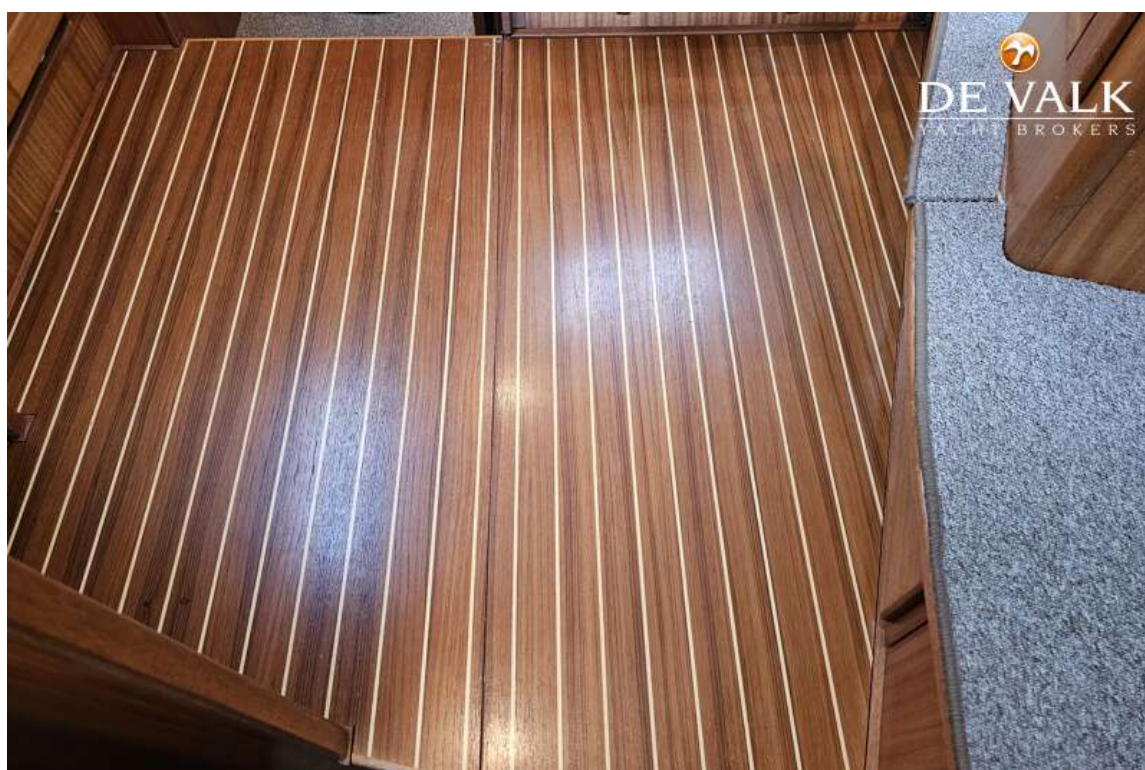
NORDSHIP 35 DS



NORDSHIP 35 DS



NORDSHIP 35 DS



NORDSHIP 35 DS

