



## BAVARIA 32 SPORT



# BAVARIA 32 SPORT

## BROKER'S COMMENTS

This Bavaria 32 Sport built by the well-known German shipyard is one of the best model in his category. With an extended bathing platform and plenty of space outside with a wet bar, this Bavaria 32 Sport is perfect to welcome friends and family. With a beautiful and elegant interior, she is very comfortable with a dinning table, a galley and a separate bathroom. She can accomodate up to 4 people with the front double bed and the aft separate double bed (or single beds) cabin. With only one owner since new, this Bavaria 32 Sport full options is in very good condition with low engines hours.

*Alan Deasti*

## SPECIFICATIONS

<b>Dimensions</b>	10.97 x 3.31 x 1.23 (m)	<b>Builder</b>	Bavaria
<b>Built</b>	2014	<b>Cabins</b>	2
<b>Material</b>	GRP	<b>Berths</b>	4
<b>Engine(s)</b>	2 x Mercruiser 5.0L MPI petrol	<b>Hp/Kw</b>	2 x 260.00 (hp), 191.36 (kw)
<b>Asking price</b>	€ 125.000 (VAT Not paid)	<b>Lying</b>	France

## CONTACT

<b>Sales office</b>	De Valk Antibes	<b>Telephone</b>	+33 492 91 0202
<b>Address</b>	2, Avenue de Verdun 06600 Antibes FR	<b>E-mail</b>	antibes@devalk.nl

## DISCLAIMER

These particulars are given in good faith as supplied but cannot be guaranteed.



# BAVARIA 32 SPORT

## GENERAL

Model	BAVARIA 32 SPORT
Type	motor yacht
LOA (m)	10,97
LWL (m)	10,06
Beam (m)	3,31
Draft (m)	1,23
Year built	2014
Builder	Bavaria
Country	Germany
Displacement (t)	6
CE norm	B
Hull material	GRP
Hull colour	white With dark grey strip
Deck finish	teak
Portholes	With Oceanair blinds
Fuel tank (litre)	520
Level indicator (fuel tank)	yes
Freshwater tank (litre)	250
Level indicator (freshwater)	yes
Blackwater tank (litre)	35
Outside helm position	With Joystick Axis

## ACCOMMODATION

Cabins	2
Berths	4
Floor	parquet
Saloon	L shape sofa with dinning table
Sliding door to cockpit	yes
Galley	yes
Countertop	corian



# BAVARIA 32 SPORT

Sink	yes
Cooker	electric 2x Foster
Fridge	yes
Hot water system	yes
Water pressure system	electrical
Owners cabin	Double bed in front of the saloon
Bathroom	yes
Toilet	yes
Toilet system	electric
Wash basin	yes
Shower	yes
Guest cabin 1	double bed Or single beds configuration
Wardrobe	yes
Extra info	Sofa inside the aft cabin
Wet bar	With fridge and sink outside
Extra info	Big storage below the aft sunbeds
Extra info	Plenty of storage inside underneath and below beds

## MACHINERY

No of engines	2
Make	Mercruiser
Type	5.0L MPI
HP	260
kW	191.36
Fuel	petrol
Engine hours	393
Drive	Z-drive
Engine controls	electrical 2 throttles plus Joystick Axis control
Bowthruster	electric Side Power Sleipner
Manual bilge pump	yes
Electric bilge pump	yes



Start battery	New
Service battery	New
Bowthruster battery	New
Battery charger	yes
Shorepower	with cable
Trimtabs	yes
Extra info	Mercruiser SmartCraft analogue gauges
Extra info	Vessel View SmartCraft

## NAVIGATION

Compass	yes
Multi control display	For all switches from pilot seat
VHF	yes
Autopilot	Axius : Auto heading, Track waypoint, Skyhook GPS hold position
Plotter/GPS	Garmin GPSmap 5008
Navigation lights	yes

## EQUIPMENT

Sprayhood	Transparent between the windscreen and the bimini
Bimini	Blue
Cockpit table	In wood on a pedestal
Cockpit chairs	U shape sofa for 6/7 people + co-pilot seat flipable
Bathing platform	Extended bathing platform with ladder
Deck shower	yes
Anchor	yes
Windlass	electrical With control from driving seat in cockpit
Wiper	yes
Horn	yes
TV	Fusion
Surround Sound System	Fusion MS-WR600



Cockpit speakers

yes





# BAVARIA 32 SPORT

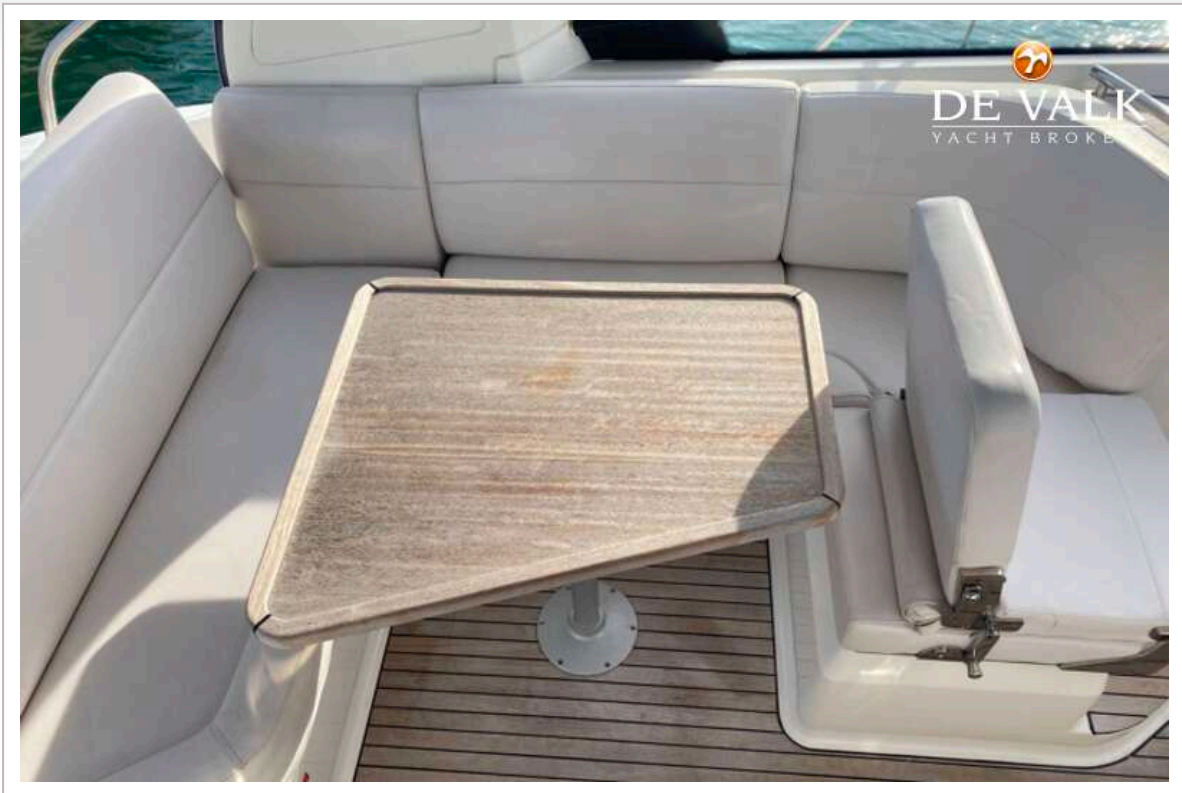


# BAVARIA 32 SPORT





# BAVARIA 32 SPORT



# BAVARIA 32 SPORT





# BAVARIA 32 SPORT

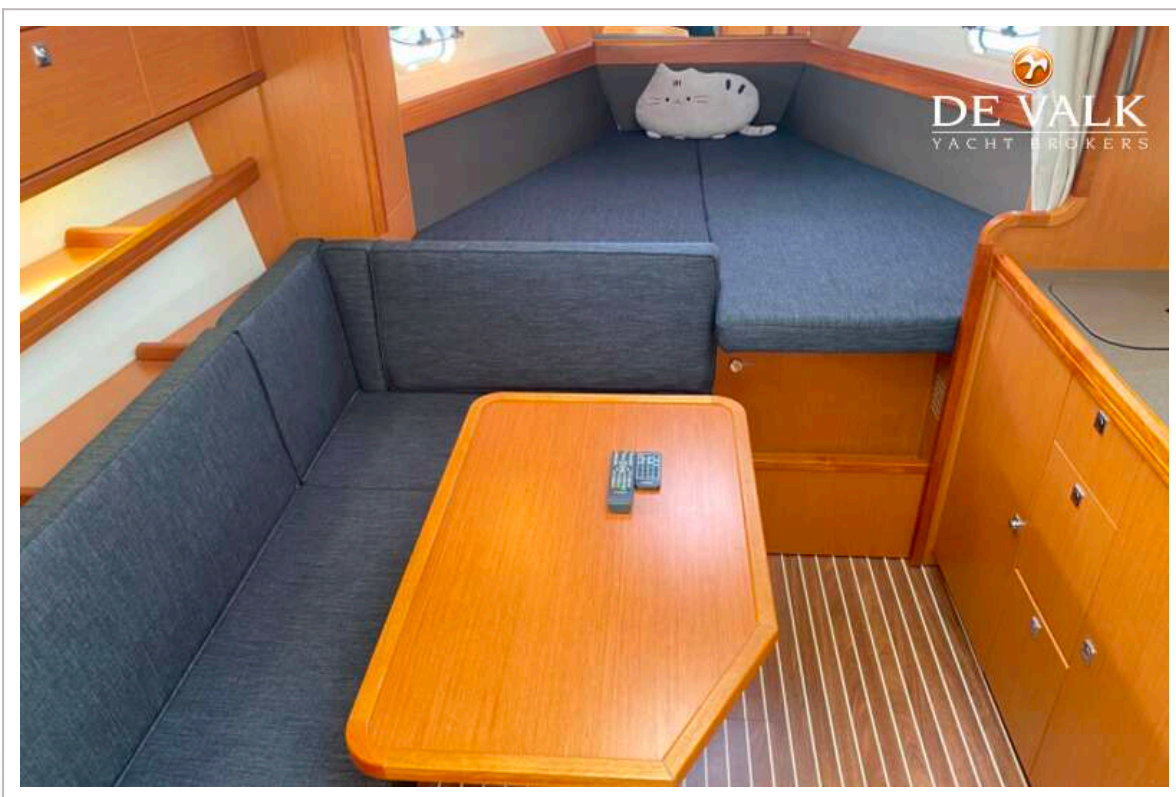
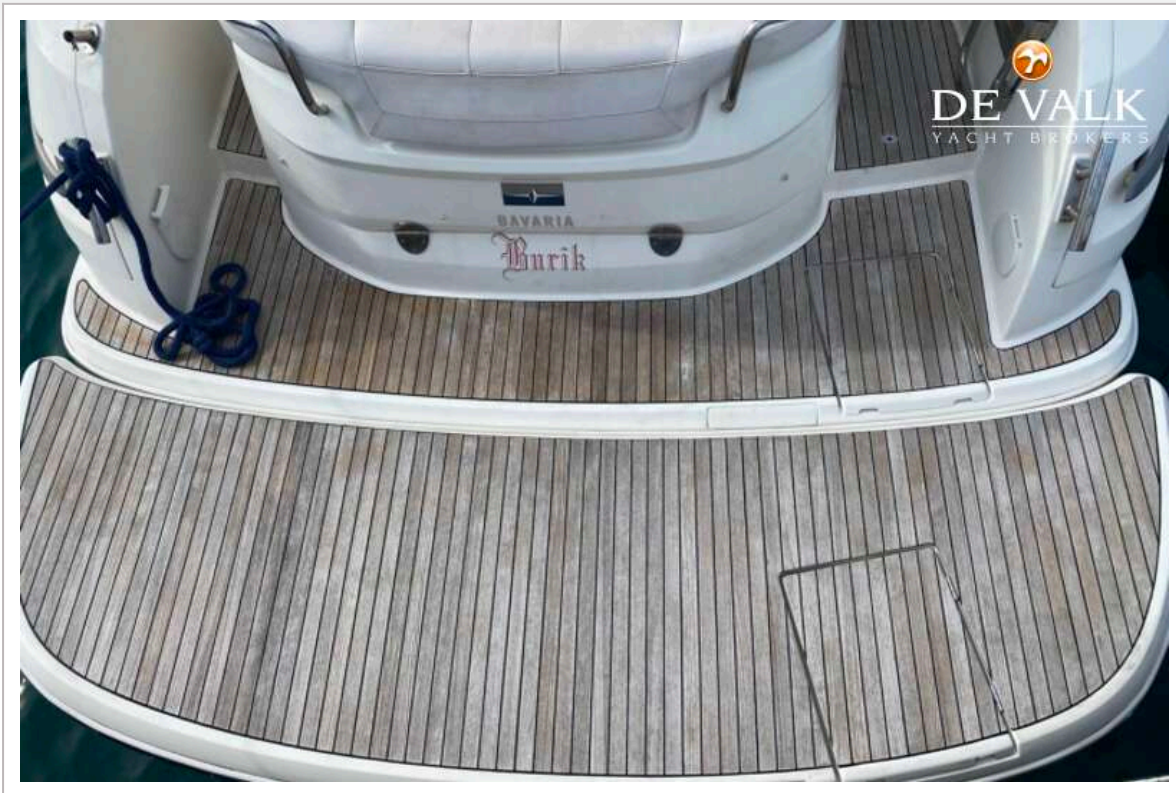


# BAVARIA 32 SPORT

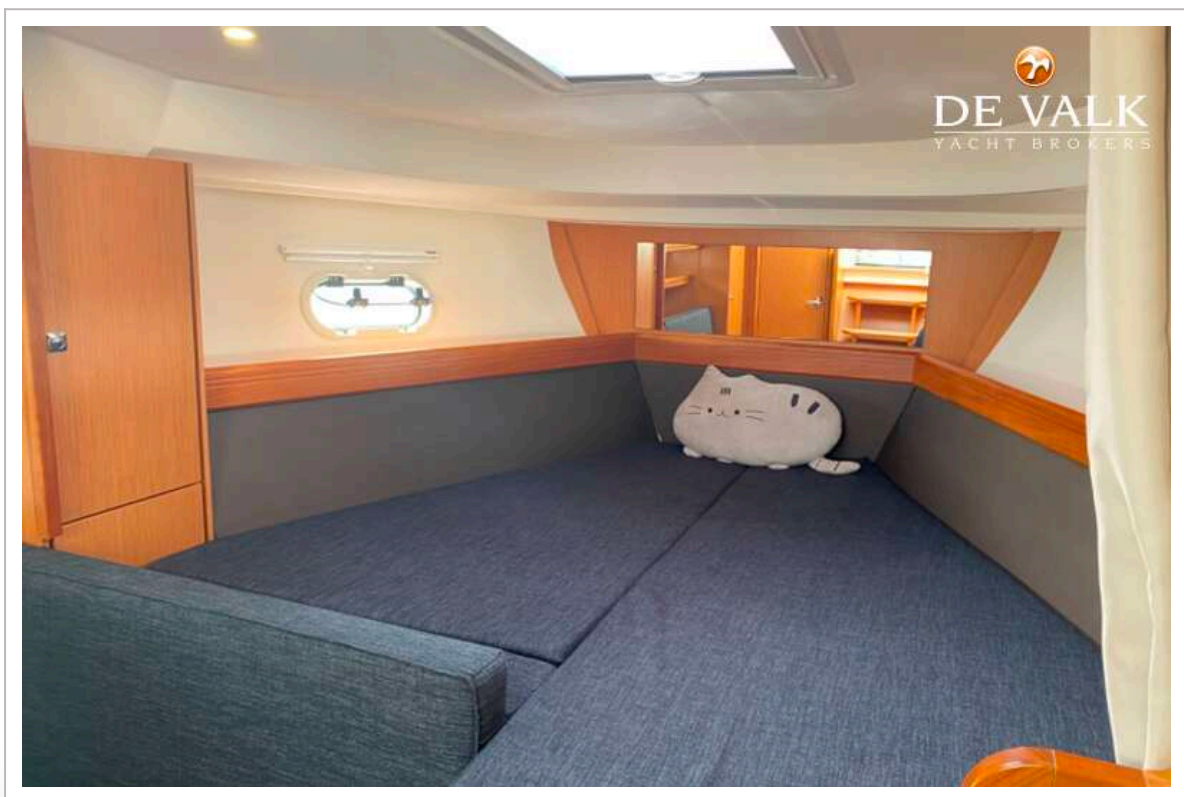
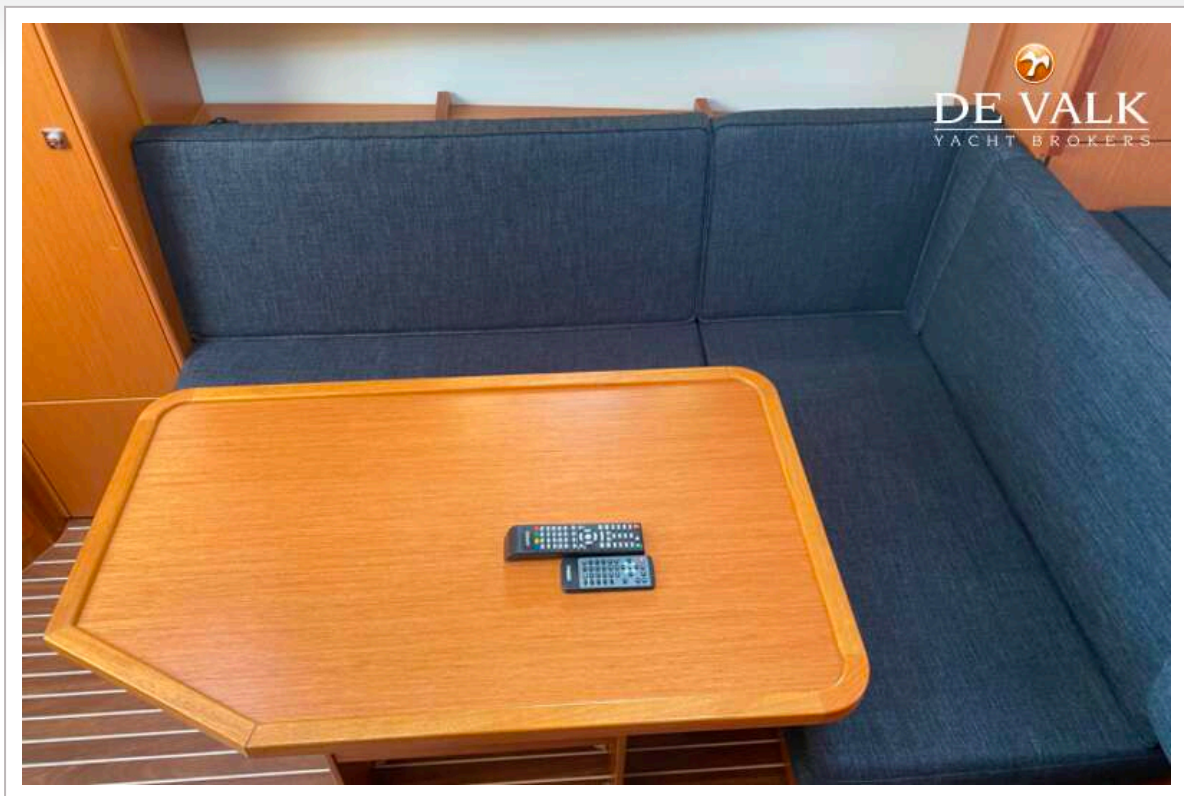




# BAVARIA 32 SPORT

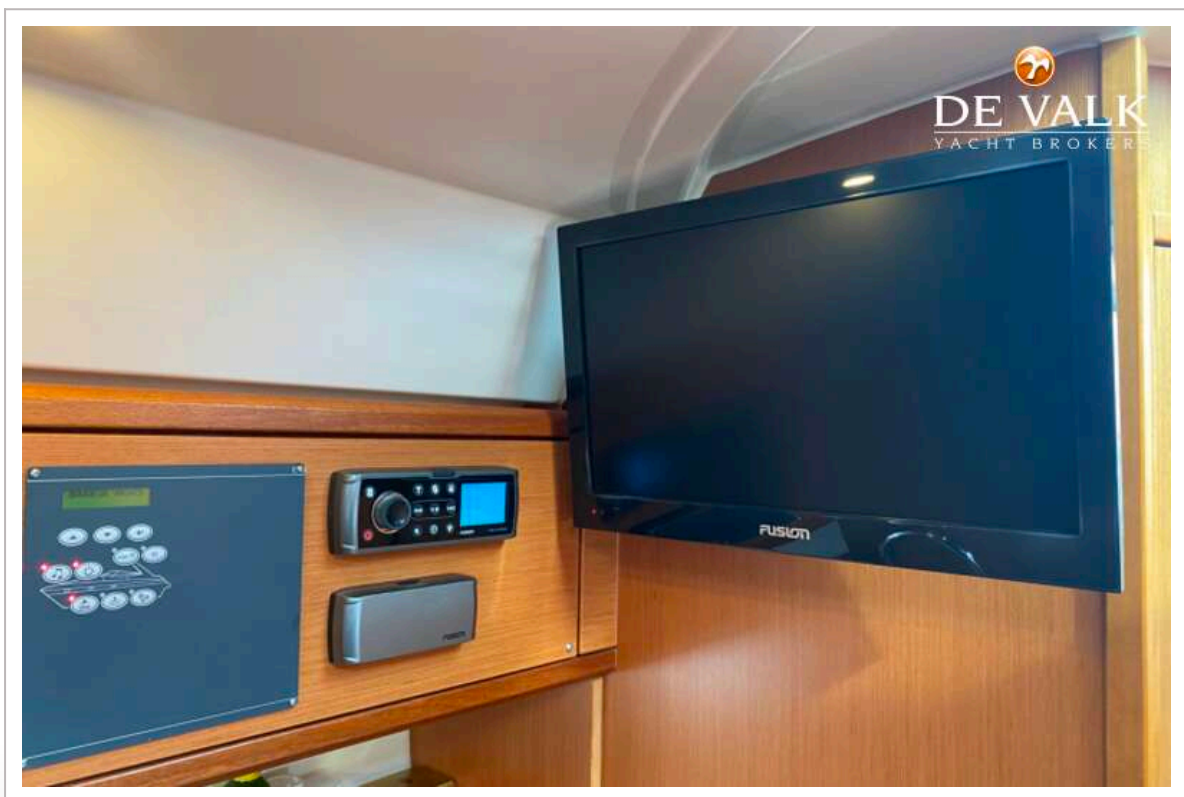


# BAVARIA 32 SPORT

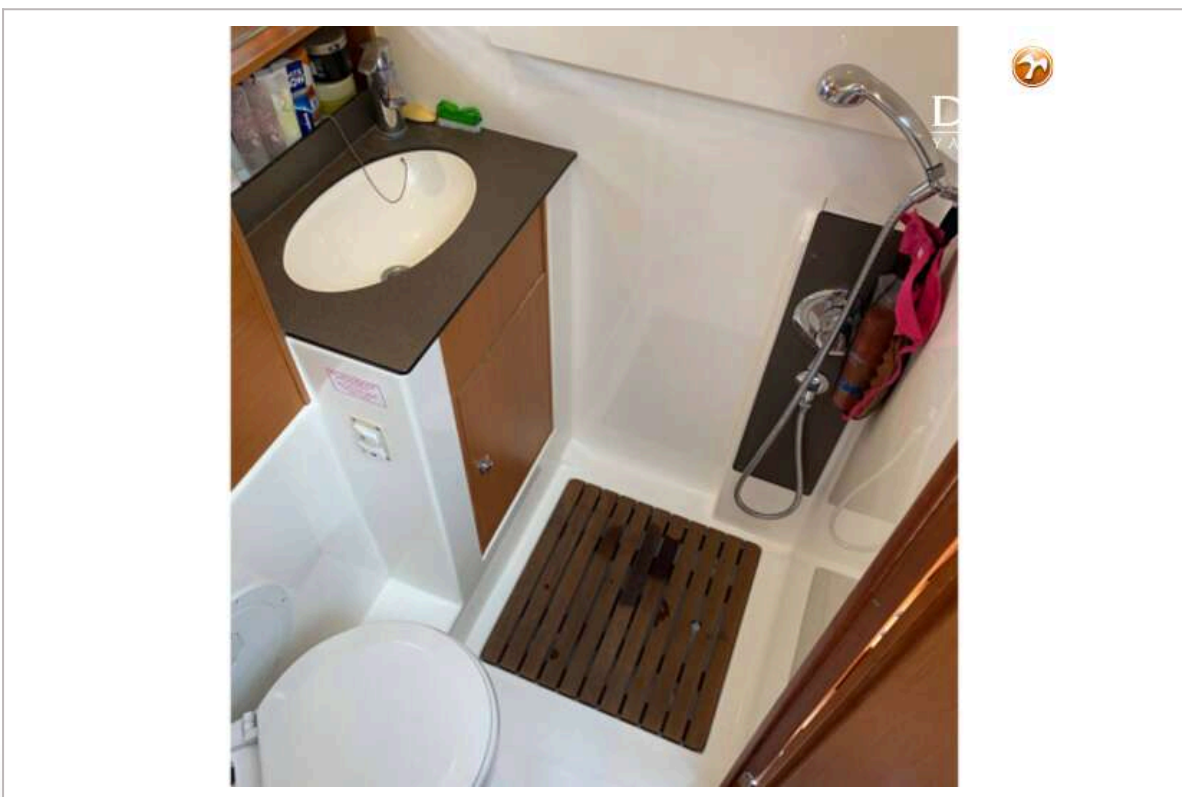




# BAVARIA 32 SPORT

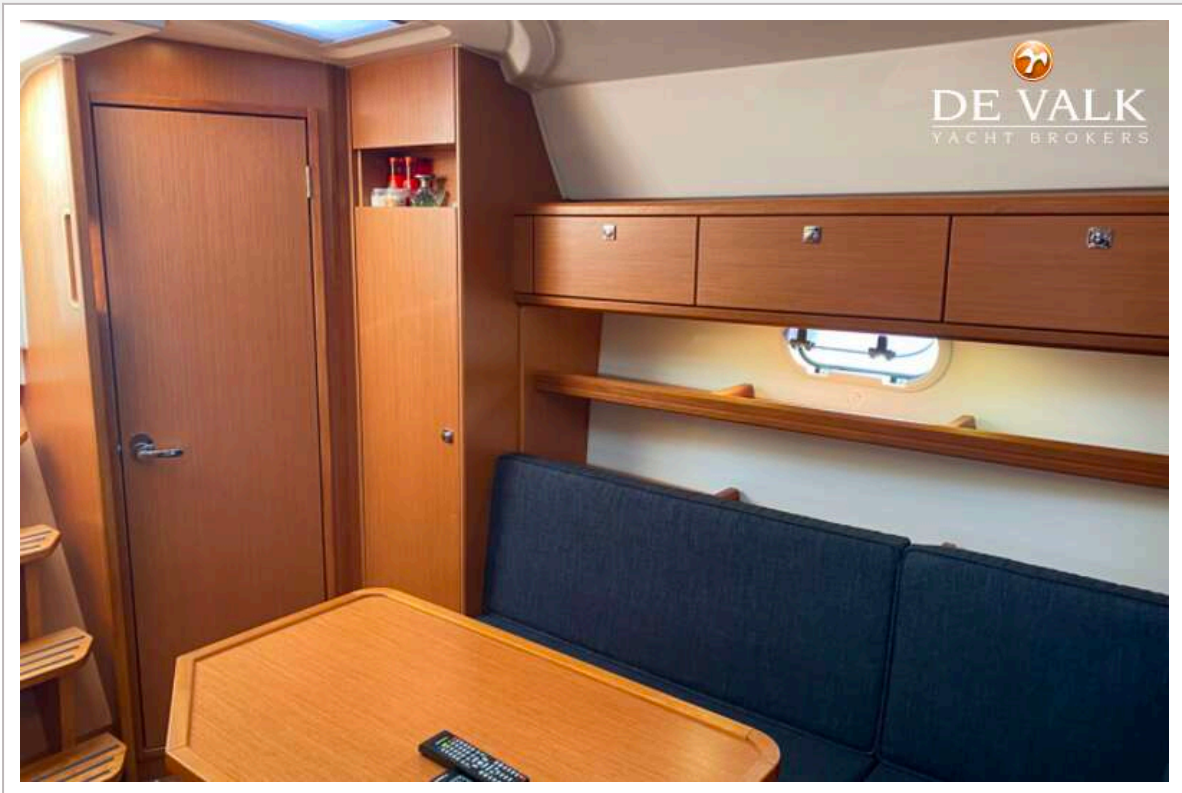


# BAVARIA 32 SPORT

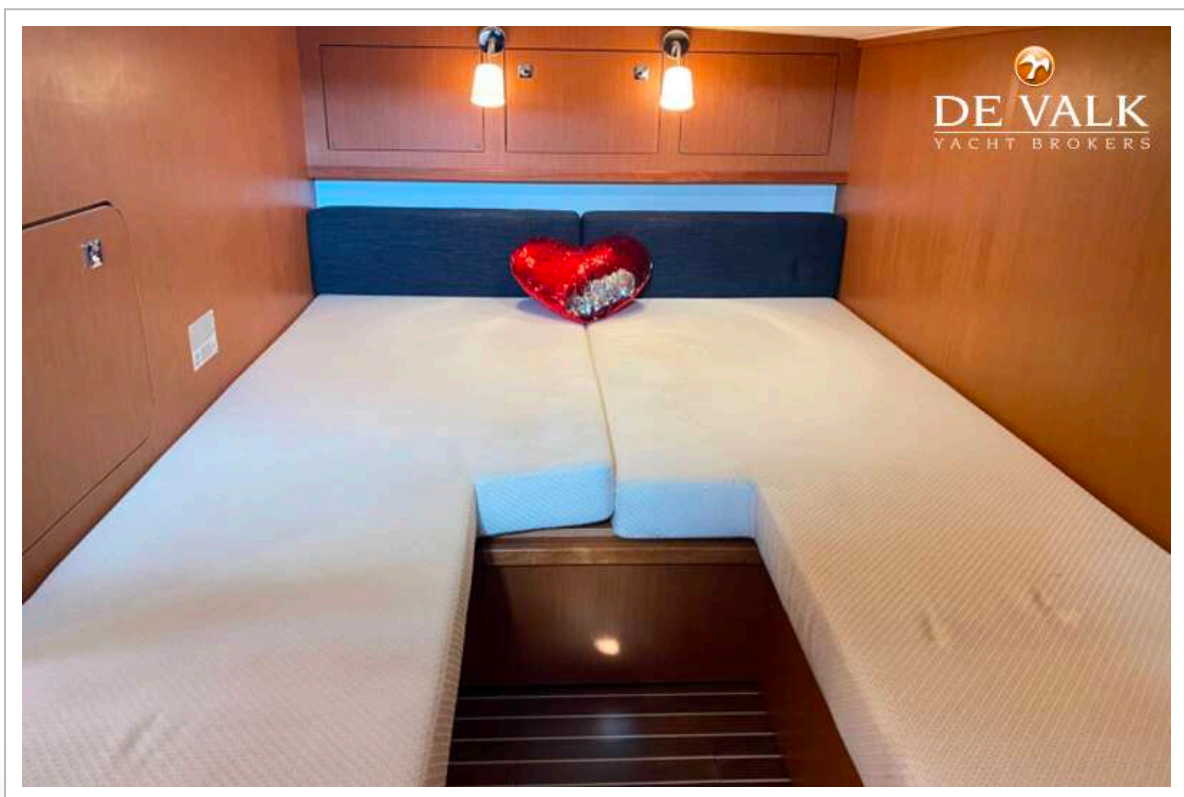
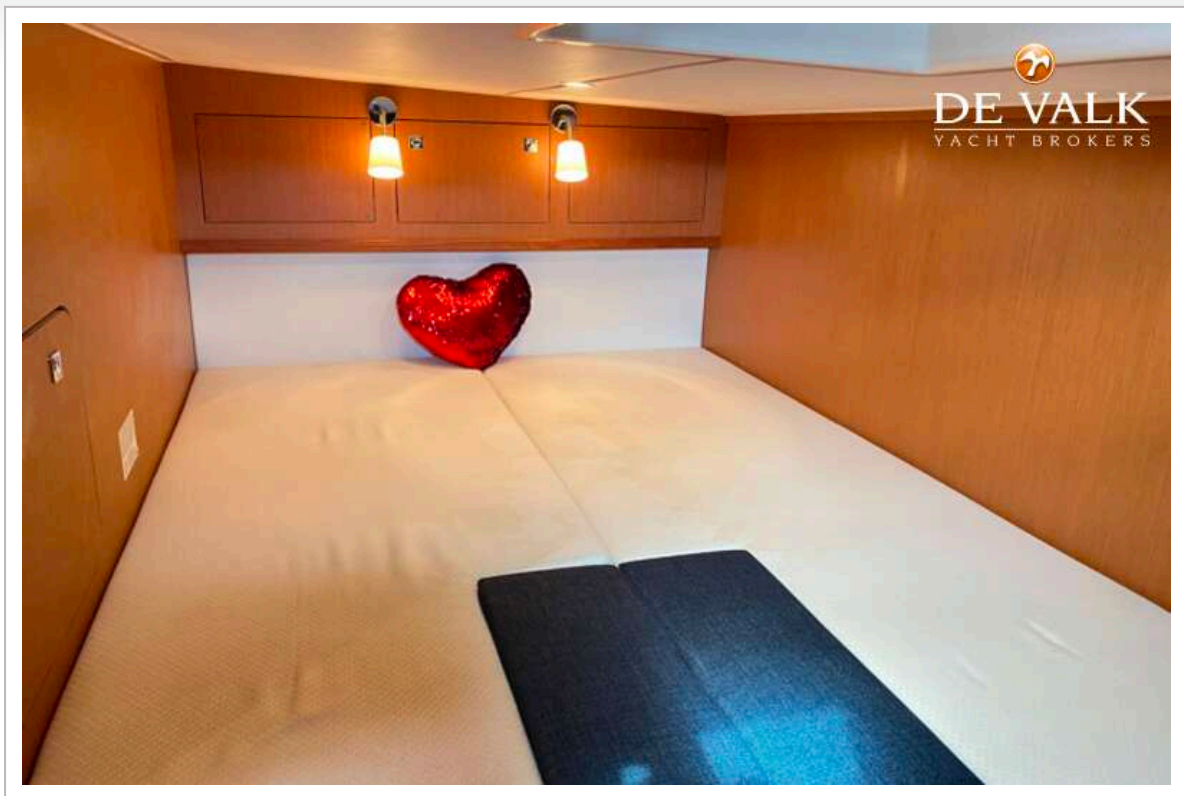




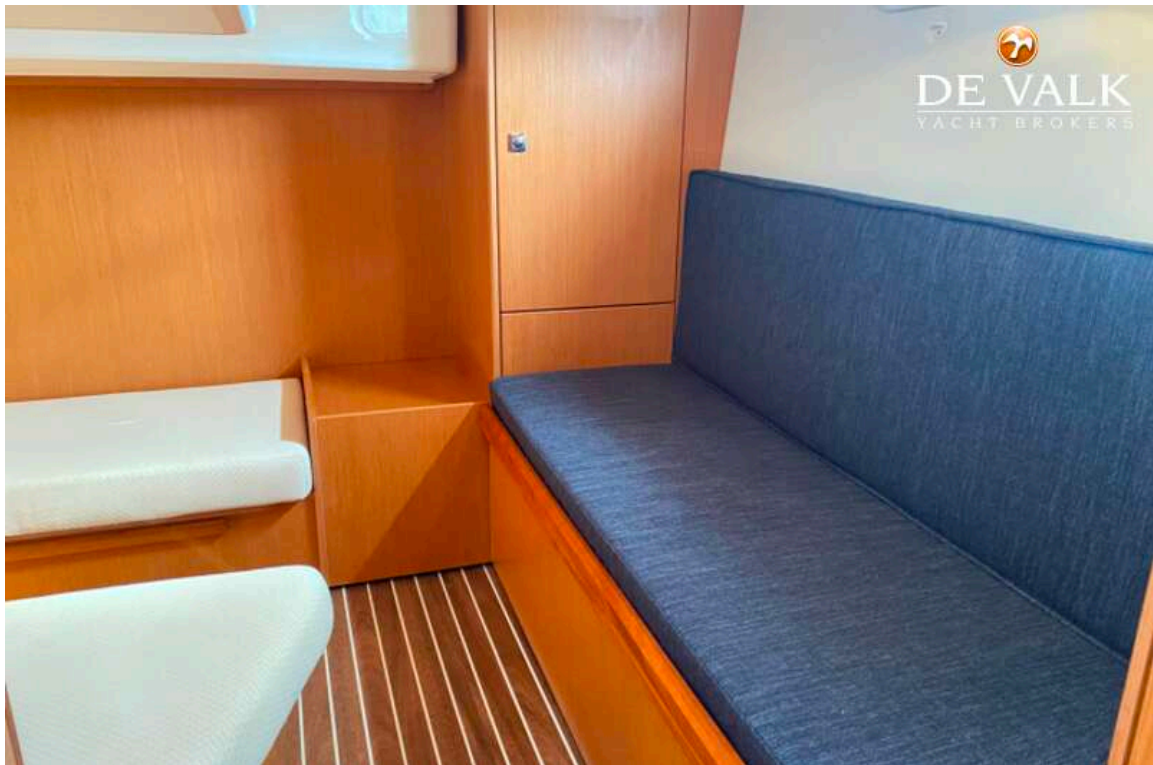
# BAVARIA 32 SPORT



# BAVARIA 32 SPORT



# BAVARIA 32 SPORT





# BAVARIA 32 SPORT

