



DE VALK
YACHT BROKERS



MOODY 41 CLASSIC



DE VALK
YACHT BROKERS

MOODY 41 CLASSIC

BROKER'S COMMENTS

Tradition with a twist; The Moody 41 classic wraps classical styling around a modern underbody, with its long, low-slung trunk cabin and slightly overhung transom. In fact, the 41 is a blend of old and new. Thoroughly modern are its nearly plumb bow, below-the-waterline hull form, deep fin keel and powerful sailing rig and self-tending jib. Inside she offers gleaming varnished mahogany woodwork, white panels and blue leather upholstery; Bill Dixon designed a good looking easy to handle, well performing yacht. With a smart deck lay out and roomy interior, a passage maker for couples.

Ron Neij

SPECIFICATIONS

Dimensions	12.70 x 4.00 x 2.00 (m)	Builder	Moody Yachts
Built	2010	Cabins	2
Material	GRP	Berths	4
Engine(s)	1 x Yanmar 3JH5E diesel	Hp/Kw	40.00 (hp), 29.44 (kw)
Asking price	€ 228.500 (VAT Paid)	Lying	at sales office

CONTACT

Sales office	De Valk Monnickendam B.V.	Telephone	+31 (0)299 65 63 50
Address	Hoogedijk 6 1145 PM Katwoude NL	E-mail	monnickendam@devalk.nl

DISCLAIMER

These particulars are given in good faith as supplied but cannot be guaranteed.



MOODY 41 CLASSIC

GENERAL

Model	MOODY 41 CLASSIC
Type	sailing yacht
LOA (m)	12,70
LWL (m)	10,90
Beam (m)	4,00
Draft (m)	2,00
Air draft (m)	20,00
Headroom (m)	1,90
Year built	2010
Builder	Moody Yachts
Country	Germany
Designer	Bill Dixon Watervision
Displacement (t)	9,8
Ballast (tonnes)	cast iron and lead - 2,75
CE norm	A
Hull material	GRP
Hull colour	off-white
Hull shape	round-bilged
Keel type	bulb keel - L shape
Superstructure material	GRP
Rubbing strake	wood - with stainless steel strip
Deck material	GRP
Deck finish	teak
Superstructure deck finish	non-skid moulded in
Cockpit deck finish	teak
Dorades	2 x
Window frame	aluminium
Window material	polycarbonate
Deckhatch	2 x Lewmar
Fuel tank (litre)	stainless steel - 140



MOODY 41 CLASSIC

Level indicator (fuel tank)	yes
Freshwater tank (litre)	polyethylene - 320
Level indicator (freshwater)	yes
Blackwater tank (litre)	polyethylene
Blackwater tank extraction	deck extraction + pump
Wheel steering	chain steering - 2 x Jefa Steering
Outside helm position	yes
Emergency tiller	yes

ACCOMMODATION

Cabins	2
Berths	4
Interior	mahogany - High gloss mahogany / white panels
Layout	two cabins two bathrooms
Floor	teak and holly
Saloon	yes
Headroom saloon (m)	1,95
Heating	diesel ducted hot air -1 x Eberspacher airtronic D4+ 3 outlets,fwd cabin,saloon,toilet
Chart table	yes
Aft Cabin	starboard side
Dinette	yes
Galley	L-shape
Countertop	corian
Sink	corian - 2 x
Cooker	calor gas - 3 x burner pits Brenner
Oven	yes
Fridge	top loader + side loader - Isotherm
Freezer	yes
Hot water system	220V + engine - 40 l boiler
Water pressure system	electrical



MOODY 41 CLASSIC

Coffee maker	Magimix Nespresso
Owners cabin	v-bed - front vooronder Forne
Bed length (m)	2,06 x 2,00
Wardrobe	hanging and shelves
Bathroom	en suite
Toilet	en suite
Toilet system	manual - Jabsco
Wash basin	in the bathroom
Shower	en suite
Guest cabin 1	double bed - starboard stuurboord Steuerbordseite
Bed length (m)	2,00 x 1,75
Wardrobe	hanging and shelves
Bathroom	separate
Toilet	separate
Toilet system	electric
Wash basin	in the bathroom
Shower	separate

MACHINERY

No of engines	1
Make	Yanmar
Type	3JH5E
HP	40
kW	29.44
Fuel	diesel
Year installed	2010
Engine cooling system	freshwater heat exchanger
Drive	sail-drive
Saildrive seal	yes
Engine controls	bowden cable - fX
Bowthruster	electric - swing thruster RMX



MOODY 41 CLASSIC

Exhaust	watercooled
Propeller type	fixed
Propeller blades	2 x
Manual bilge pump	in cockpit
Electric bilge pump	yes
Electrical installation	12 V 220 V
Batteries	yes
Start battery	1 x 90 A AGM
Service battery	1 x 150 A AGM
Bowthruster battery	1 x 150 A AGM
Windlass battery	yes
Battery monitor	yes
Battery charger	50 Amp
Shorepower	with cable

NAVIGATION

Compass	at steering position - 2x Richie Liquid Powerdamp
Depth sounder/log	At entrance saloon + at steering position - 2 x Simrad IS20
Windset	Simrad IS20
VHF	at steering position + chart table - 2 x Simrad RS82
Autopilot	Simrad AP24
Radar/GPS/plotter	Simrad NX40
Electronic chart(s)	yes
Navigation lights	yes

EQUIPMENT

Sprayhood with grab rail	yes
Cockpit cushions	yes
Cockpit table	yes
Bathing platform	yes
Boarding ladder	stainless steel



MOODY 41 CLASSIC

Deck shower	yes
Anchor	Delta
Anchor chain	yes
Windlass	electrical - Lewmar pro series 1000 with remote control
Sea railing	wire
Grab rail (superstructure)	teak
Pushpit	stainless steel
Pulpit	stainless steel
Life raft	container - Seago Offshore
Life raft (pers)	4
Fenders	yes
Mooring lines	yes
TV	Lenco
Radio-cd player	JVC
Speakers in salon	yes
Clock - barometer	yes

RIGGING

Rigging	sloop
Standing rigging	wire - 2010
Brand mast	Seldén
Material mast	aluminium
Spreaders	2 x
Mainsail	lamine - 2010
Stoway mast	yes
Genoa	- 2010
Genoa furler	Furlex
Self tacking jib installation	yes
Reefing System	main in-mast furling
Backstay adjuster	tackle - Selden
Boomvang	mechanical and tackle - Selden Rodkicker



MOODY 41 CLASSIC

Genoa sheetwinches

electric - 2 x Lewmar 46 ST

Halyard winches

manual - 2 x Lewmar 46 ST



MOODY 41 CLASSIC



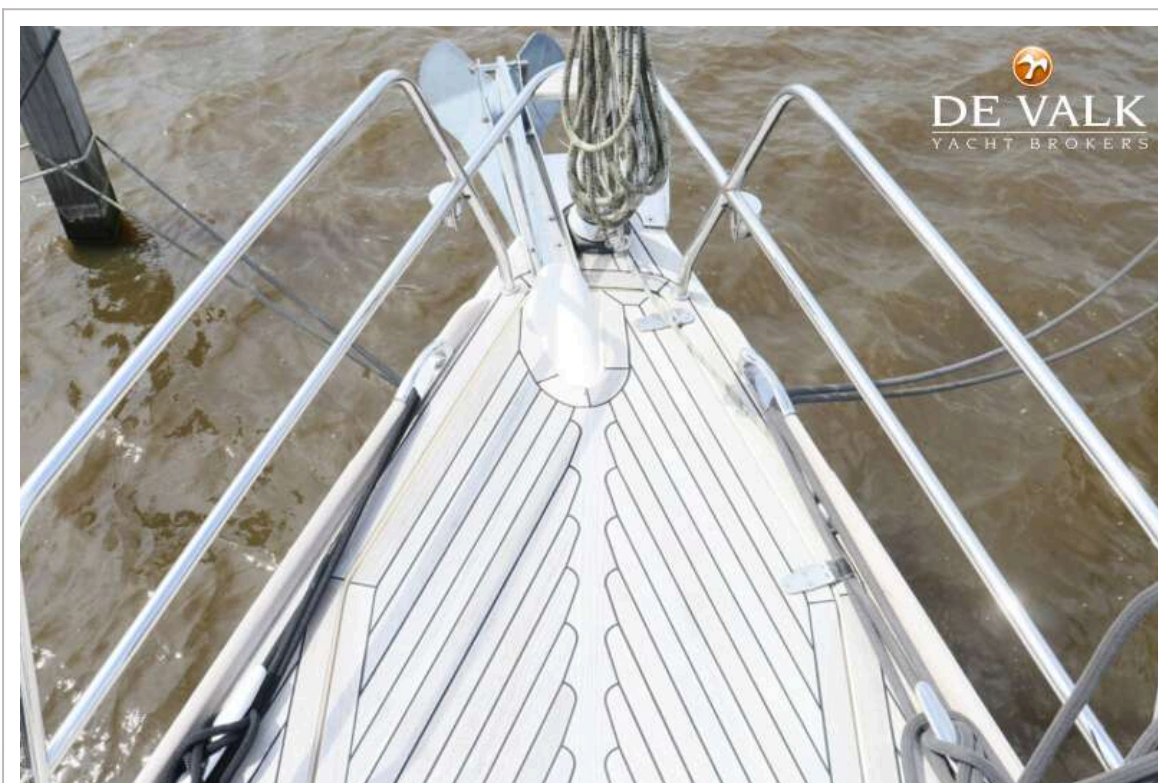
MOODY 41 CLASSIC



MOODY 41 CLASSIC



MOODY 41 CLASSIC



MOODY 41 CLASSIC



MOODY 41 CLASSIC



MOODY 41 CLASSIC



MOODY 41 CLASSIC



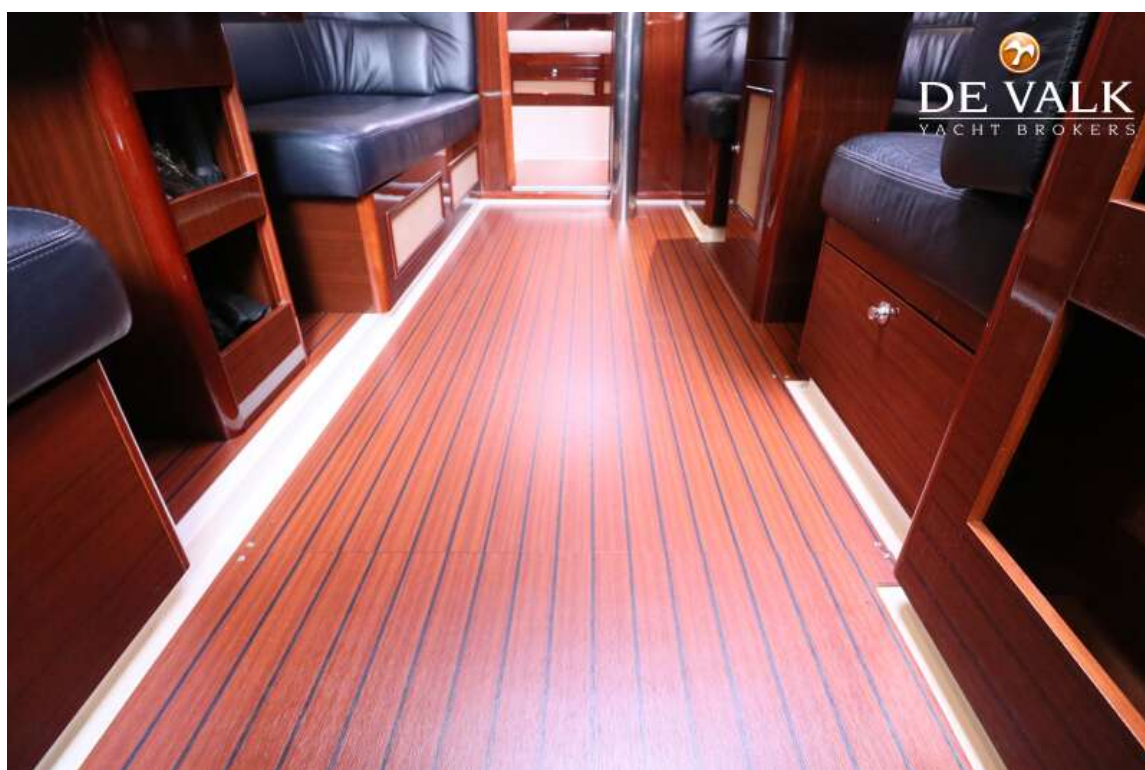
MOODY 41 CLASSIC



MOODY 41 CLASSIC



MOODY 41 CLASSIC



MOODY 41 CLASSIC



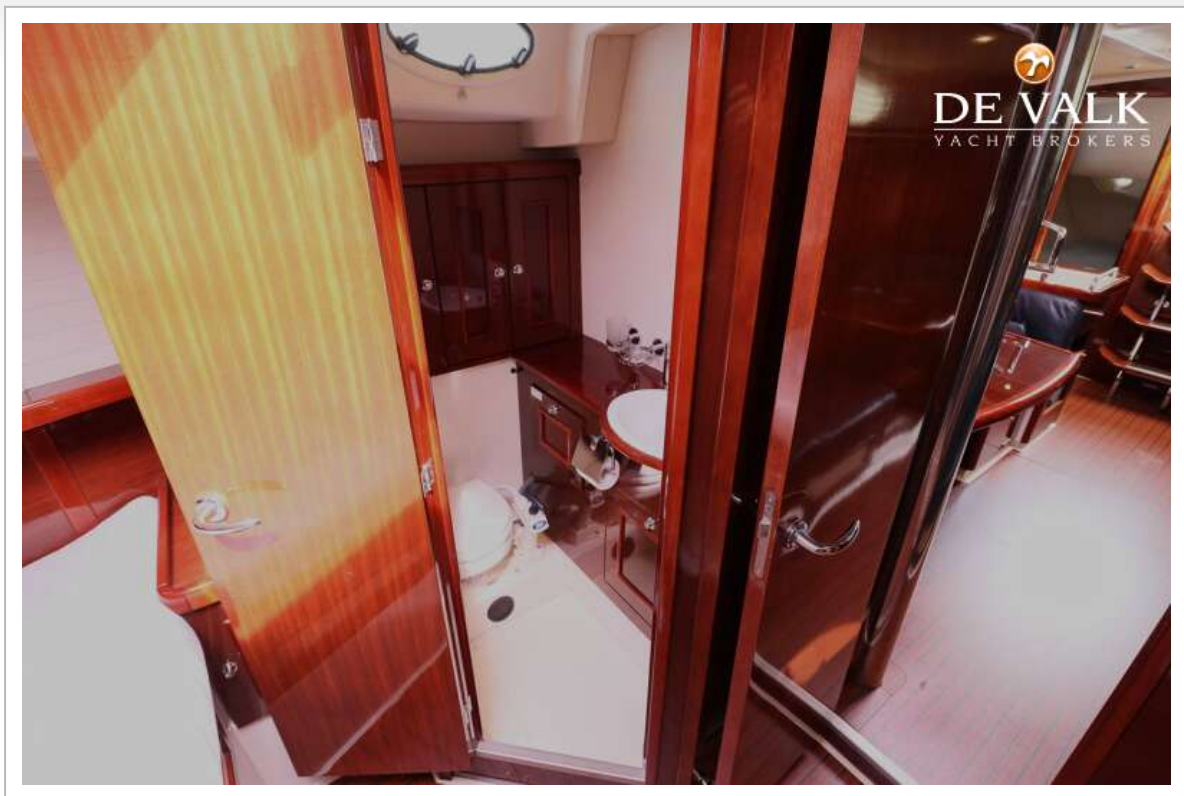
MOODY 41 CLASSIC



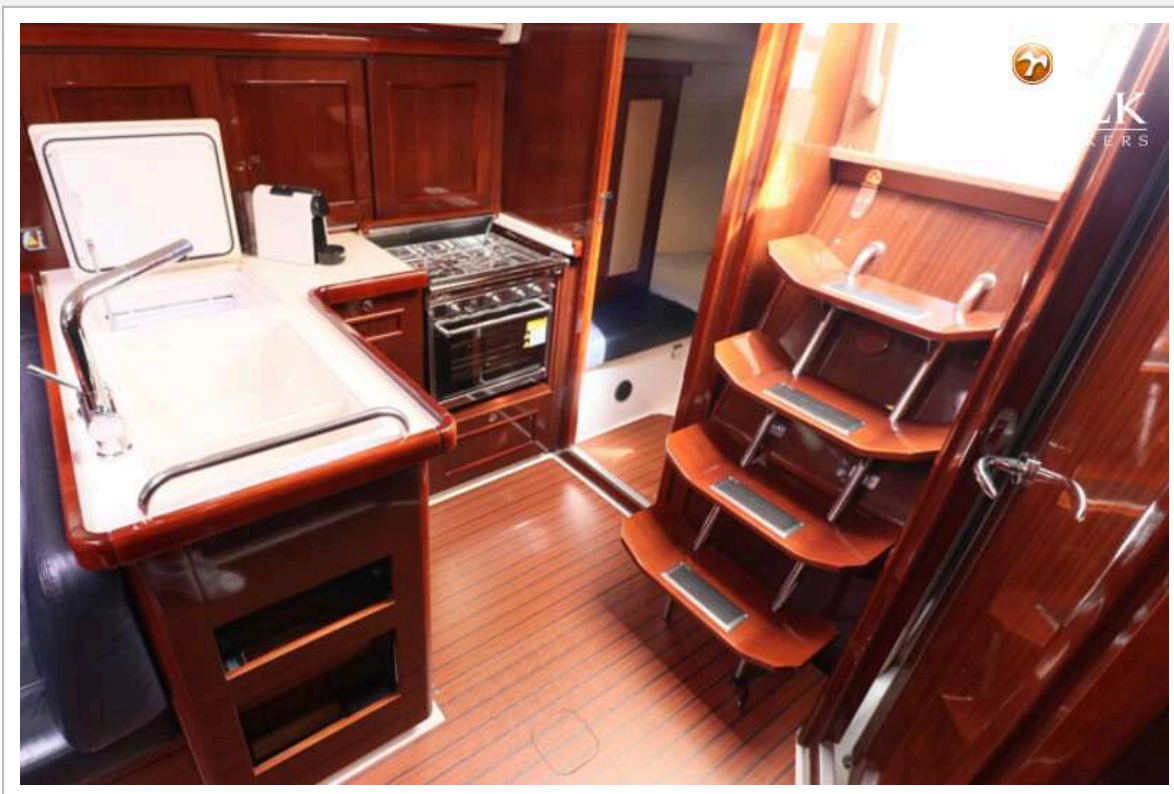
MOODY 41 CLASSIC



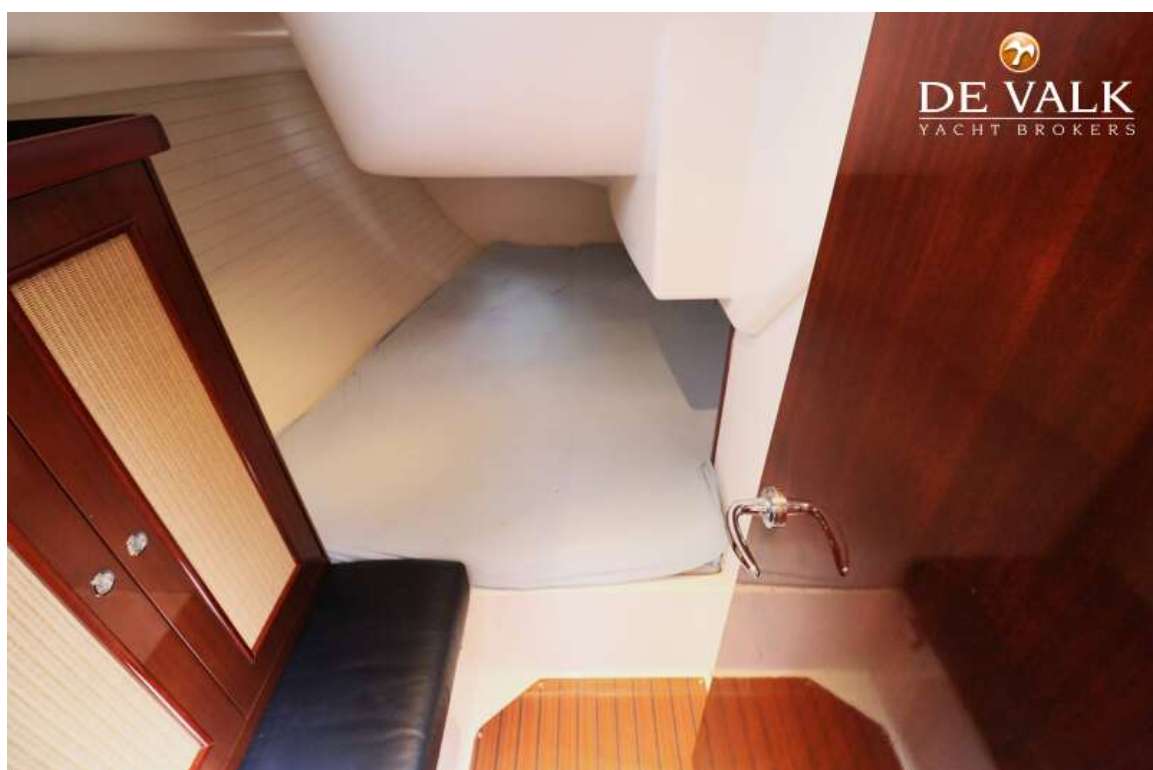
MOODY 41 CLASSIC



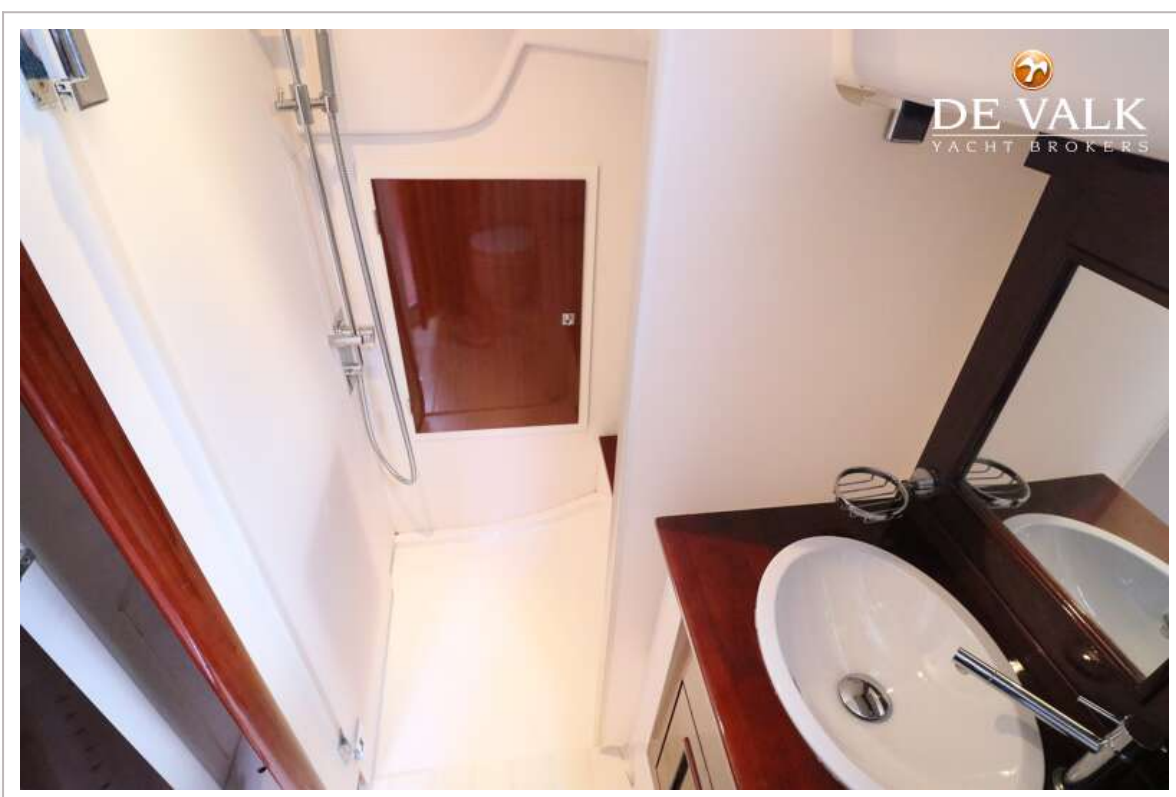
MOODY 41 CLASSIC



MOODY 41 CLASSIC



MOODY 41 CLASSIC



MOODY 41 CLASSIC

