



CR YACHTS 480 DS

CR YACHTS 480 DS

BROKER'S COMMENTS

This CR Yachts 480 Decksalon is a perfect blend of performance, style and Scandinavian build quality. Not many yards succeeded in incorporating a true deck salon with a 3 cabin layout including two separate bathrooms and a sizeable cockpit area. And on top of that, has the sail performance to be proud of. Next to her rivals like Regina af Vindo, Oyster, Contest, Hallberg Rassy, Malö etc she holds her own and her semi custom interior has a lot to offer as well. She has proven herself to be very safe and reliable for blue water cruising and is equipped just for that by her second owner.

Marc Weijenberg

SPECIFICATIONS

Dimensions	14.58 x 4.48 x 2.22 (m)	Builder	CR Yachts AB, Henan
Built	2014	Cabins	3
Material	GRP	Berths	6
Engine(s)	1 x Yanmar 4JH4TX1 diesel	Hp/Kw	110.00 (hp), 80.96 (kw)
Asking price	sold (VAT)	Lying	elsewhere / Not at sales office

CONTACT

Sales office	De Valk Thuishaven	Telephone	+31 35 5829042
Address	Peperstraat 7 1411 PX Naarden NL	E-mail	thuishaven@devalk.nl

DISCLAIMER

These particulars are given in good faith as supplied but cannot be guaranteed.



CR YACHTS 480 DS

GENERAL

Model	CR YACHTS 480 DS
Type	sailing yacht
LOA (m)	14,58
Beam (m)	4,48
Draft (m)	2,22
Air draft (m)	22,10
Year built	2014
Launched	Only lightly used (85 hours) in her first years. After 2019 her second owner fitted her out for blue water cruising.
Builder	CR Yachts AB, Henan
Country	Sweden
Designer	Stephen Jones
Displacement (t)	15,5
Ballast (tonnes)	lead 5,87
CE norm	A
Hull material	GRP
Hull colour	white
Hull shape	round-bilged
Keel type	bulb keel
Superstructure material	GRP
Rubbing strake	stainless steel
Deck material	GRP
Deck finish	teak
Cockpit deck finish	teak
Antifouling (year)	yearly cleaned and antifouling plus Sonihul (2021) electronic anti-fouling
Dorades	2 x
Window frame	stainless steel
Window material	tempered glass
Deckhatch	6 x with roller blinds and mosquito nets 6 x
Insulation	foam



CR YACHTS 480 DS

Fuel tank (litre)	stainless steel 1 x 650
Level indicator (fuel tank)	yes
Freshwater tank (litre)	stainless steel 2 x 350
Level indicator (freshwater)	yes
Blackwater tank (litre)	stainless steel 2 x 45
Level indicator (blackwater)	yes
Blackwater tank extraction	deck extraction + pump
Wheel steering	chain steering Twin steering pedestal
Emergency tiller	yes
Extra info	Lots of lazarette storage areas on deck and ample storage below decks. No dangerous interior "large open spaces", there is always grip and hand holds nearby.
Extra info	She can be sailed single handed from the safe cockpit. No need to go forward while sailing.

ACCOMMODATION

Cabins	3
Berths	6
Interior	Solid American light oak
Layout	Master bedroom with bathroom, twin guestcabins with bathroom, decksalon, galley and mechanical workshop.
Floor	Teak & light wood, including fitted carpets
Deck saloon	With ample seating (6 persons), salon table and 360 panoramic views. Windows have curtains and Solsice sun covers.
Headroom saloon (m)	headroom varies from 1,80 to 2,00 mtrs
Heating	diesel ducted hot air Eberspacher Airtronic D4 (all cabins) + 801 Controler
Chart table	yes
Dinette	can be slept on for night watches
Galley	yes
Countertop	granite
Sink	stainless steel 2 x
Cooker	calor gas Eno 2 burner (+ gas solenoid switch)



CR YACHTS 480 DS

Oven	Eno including grill function
Fridge	(fridge or freezer function) Isotherm 130 ltrs (2021)
Wine cooler	drinks fridge
Hot water system	220V + engine Isothemp 40 ltr
Water pressure system	electrical
Kettle	(220v)
Crockery	yes
Owners cabin	double bed
Bed length (m)	2,00 x 1,80 mtr, headroom 1,90 mtr (new mattress 2024)
Wardrobe	hanging/drawers/shelves
Bathroom	en suite 1
Toilet	en suite
Toilet system	electric Jabso (vacu-flush)
Wash basin	in the bathroom
Shower	en suite
Guest cabin 1	double bed + single bed
Bed length (m)	2,00 x 1,20 mtr plus 2,00 x 0,90 mtr
Wardrobe	drawers and shelves
Bathroom	shared 2
Toilet	shared
Toilet system	electric Jabsco (vacu-flush)
Wash basin	in the bathroom
Shower	shared
Guest cabin 2	yes
Bed length (m)	2,00 x 1,00 mtr, headroom: 2,00 mtr
Wardrobe	hanging and shelves
Extra info	Red night lighting, toilets can be flushed with fresh and salt water, wall mounted torches in each cabin, Sirocco II fan in all rooms, Ample USB and 12v/220v sockets.

MACHINERY

No of engines	1
---------------	---



CR YACHTS 480 DS

Make	Yanmar
Type	4JH4TX1
HP	110
kW	80.96
Fuel	diesel
Year installed	2014
Maximum speed (kn)	8,7
Cruising speed (kn)	6,5
Consumption (l/hr)	5
Engine hours	1500
Engine cooling system	freshwater heat exchanger
Drive	shaft
Engine controls	bowden cable
Gearbox	mechanical
Bowthruster	electric Sidepower SE170 10,7hp (new motor 2021)
Thrust bearing	Aquadrive (2021)
Propeller type	folding
Propeller blades	3 x
Propeller shaft material	stainless steel
Shaft lubrication	water
Manual bilge pump	1 x
Electric bilge pump	2 x
Electrical installation	12v/24v/220v
Start battery	Optima (2023)
Service battery	2 x Mastervolt Lithium 5500watt (2022)
Battery monitor	Mastervolt Easy View display
Battery charger/inverter	Mastervolt 12v/3500watt/16amp (2023)
Solar panel	3 x 200watt/35v with voltage controllers (2024)
Shorepower	with cable
Insulation transformer	Mastervolt Mass GI3.5 (2023)
Watermaker	Aquatec 120 ltr/hr (2021) approx 250 hours



Extra info

12v + 24v alternator on main engine, hydro generator (24v/600watt, 2023). Lithium batteries and other electronic equipment was professionally installed.

NAVIGATION

Compass

2 x Plastimo on pedestals

Electric compass

Fluxgate Magnetometer

Depth sounder

Raymarine I70s

Log

Raymarine I70s

Windset

Raymarine I70s

Repeater

Raymarine I70s

VHF

Raymarine Ray240

VHF handheld

Icom IC M93D

Autopilot

ACU400 autopilot P70 (refurbished 2023) with extra display inside.

Wind vane steering install.

Hydrovane (2021)

Rudder angle indicator

via autopilot

Radar

Raymarine 4kW digital

GPS

Raymarine GA200 (2024)

Plotter

Raymarine Hybrid Touch E95 plus Raymarine E125 slave in cockpit.

Weather receiver

Iridium GO and also Predict Wind through Starlink

Navtex

Furuno NX300

Wifi antenna

Starlink (optional)

Electronic chart(s)

yes

AIS transponder

Raymarine AIS 700 (2024)

EPIRB

Ocean Signal Rescue Me (2020)

Personal MOB transmitter

in lifejackets + PLB

Navigation lights

yes

Searchlight

yes

Extra info

safety flares, horn, Seasafe SART S100, electronic flare



EQUIPMENT

Sprayhood	2 x
Bimini	2 x
Sun awning	front & back, heavy duty, waterproof and UV protection
Cockpit cushions	yes
Cockpit table	yes
Bathing platform	yes
Boarding ladder	stainless steel
Transom door	sliding washboard
Gangway	yes
Deck shower	hot & cold water
Anchor	Ultra 35kg (stainless)
Anchor chain	110mtr (10mm galvanised)
Anchor 2	Bruce 30kg (stainless)
Other ground tackle	Fortress 7kg stern anchor
Windlass	electrical Lewmar V2/3
Deck wash	yes
Dinghy	rigid inflatable Highfield (hypalon) 2021 optional
Outboard	6hp Suzuki, Evo 1hp electric (2021) optional
Outboard support	yes
Davits	Simpson
Davits controls	manual
Sea railing	stainless steel
Grab rail (superstructure)	teak
Railing side opening gates	2 x
Pushpit	yes
Pulpit	yes
Life raft	container Ocean ISO 9650
Life raft (pers)	6 persons
Last life raft survey	New August 2022
Lifejackets	5 x Secumar & Spinlock



Safety harness	4 x Spinlock
Lifebuoy	yes
Danbuoy	Seago SP3
Safety lines on deck	yes
Fenders	yes
Mooring lines	yes
Spare parts	yes
Satellite	Starlink Onboard (optional)
Radio-cd player	yes
Surround Sound System	yes
Cockpit speakers	yes
Speakers in salon	yes
Clock - barometer	yes
Fire extinguisher	3 x
Latest extinguisher survey	(2022)
Extra info	Fixed sea railings are extended to mid way along the length of the boat. Aft with two pensionado seats.

RIGGING

Rigging	cutter
Standing rigging	wire 2014, professionally inspected 2022
Brand mast	Seldén
Material mast	aluminium
Spreaders	3 x set
Keel stepped mast	yes
Fully battened mainsail	in-mast furling, Lundh Sails 6 x vertical batten, 60m2 (2014)
Stoway mast	yes
Jib	Lundh Sails furling 35m2 (2014) with UV protection
Genoa	Lundh Sails furling 135%, 75m2 (2014) with UV protection
Genoa furler	Furlex 400-S
A-symmetric spi	furling 1-Sails, 125m2 (2022)



Staysail furler	Furlex 304-S
Trysail	Orange dacron 13,5m2 (2023)
Stormjib	Orange dacron 10,5m2 (2023)
Self tacking jib installation	yes
Reefing System	main in-mast furling Seldén electric SMF (Synchronized Main Furling)
Backstay adjuster	mechanical
Boomvang	mechanical Seldén Rodkicker
Primary sheet winch	Seldén E40i (electric)
Genoa sheetwinches	2 x Anderssen 58ST s-speed (electric)
Halyard winches	2 x Anderssen ST40 3-speed
Multifunctional winches	1 x Anderssen 27ST 2-speed
Spi-pole	carbon Seldén (5,45 mtr)
Gennaker pole	aluminium Seldén bowsprit (for FFR A-spi)
Extra info	Dynema halyards and Antal Tracks, preventer sheets to boom for downwind sailing. Riggingscrew covers



CR YACHTS 480 DS



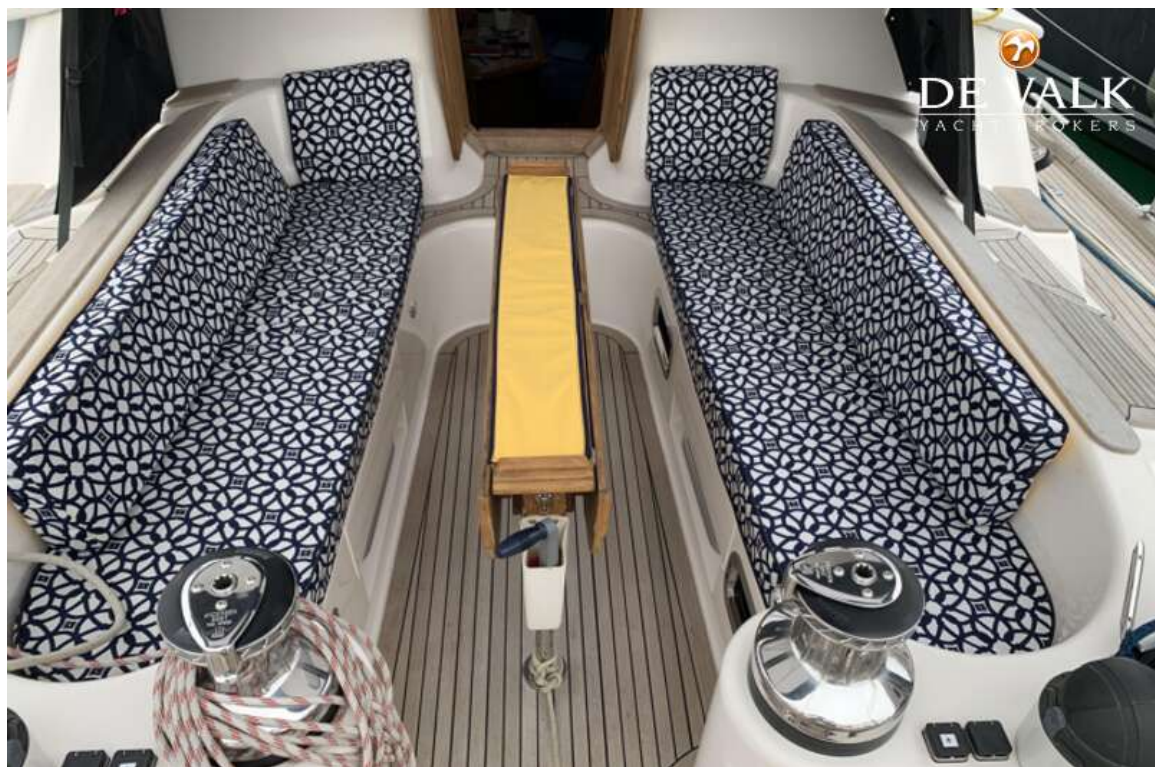
CR YACHTS 480 DS



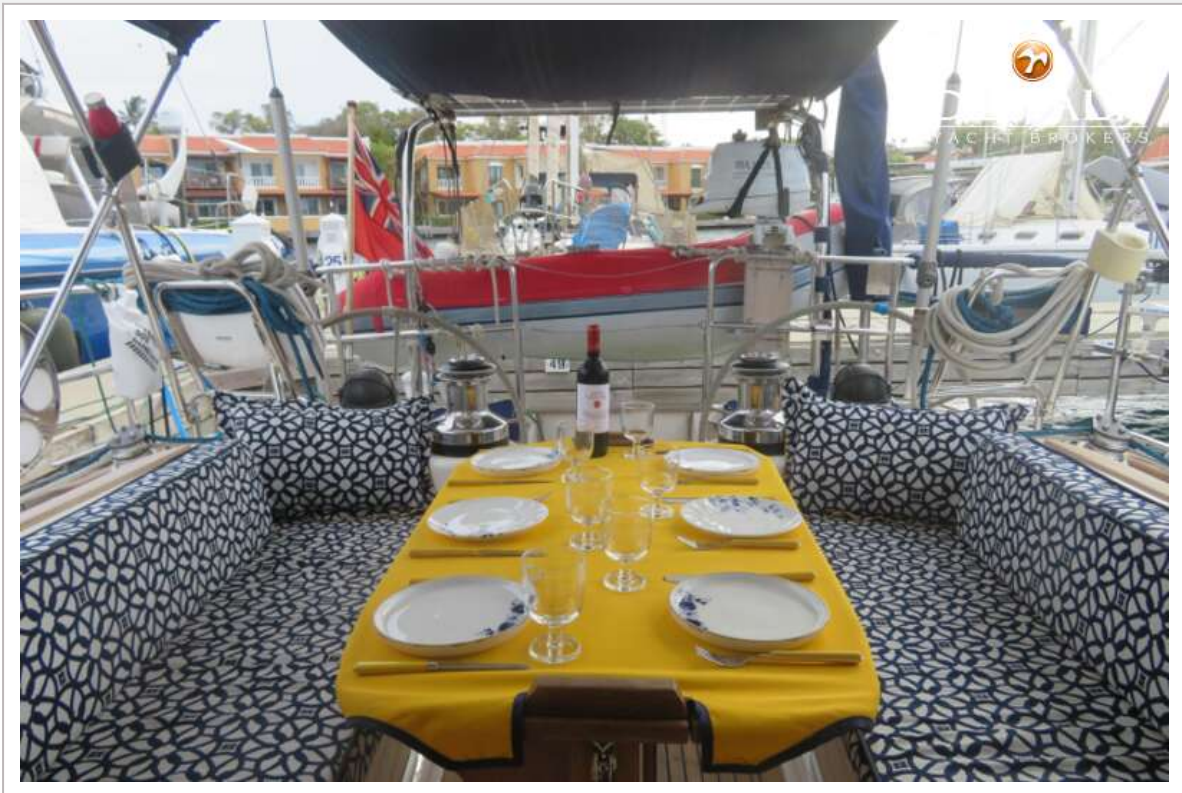
CR YACHTS 480 DS



CR YACHTS 480 DS



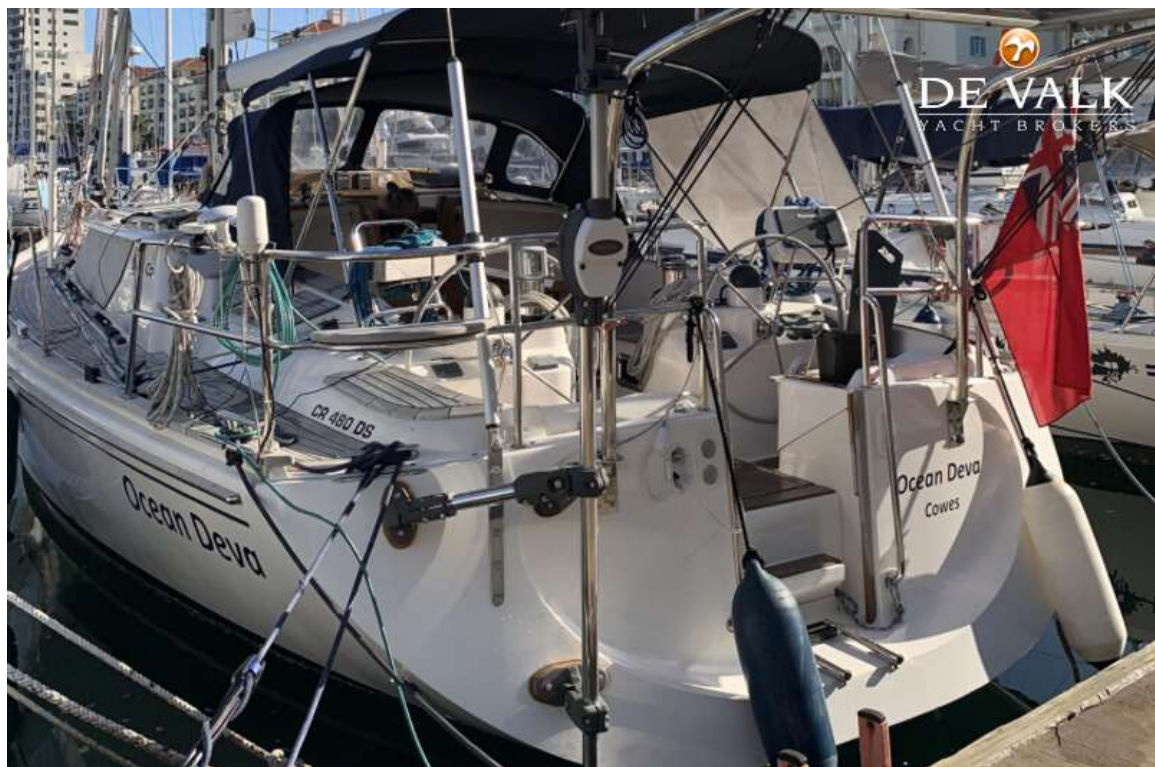
CR YACHTS 480 DS



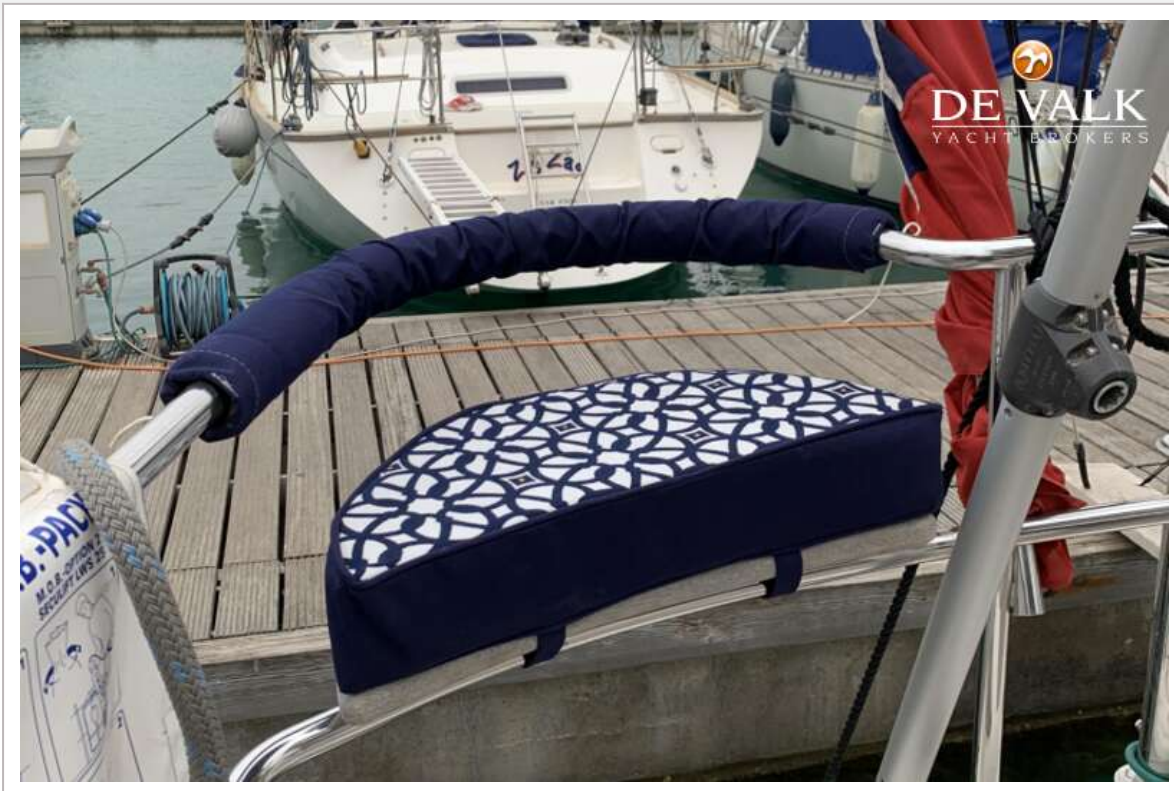
CR YACHTS 480 DS



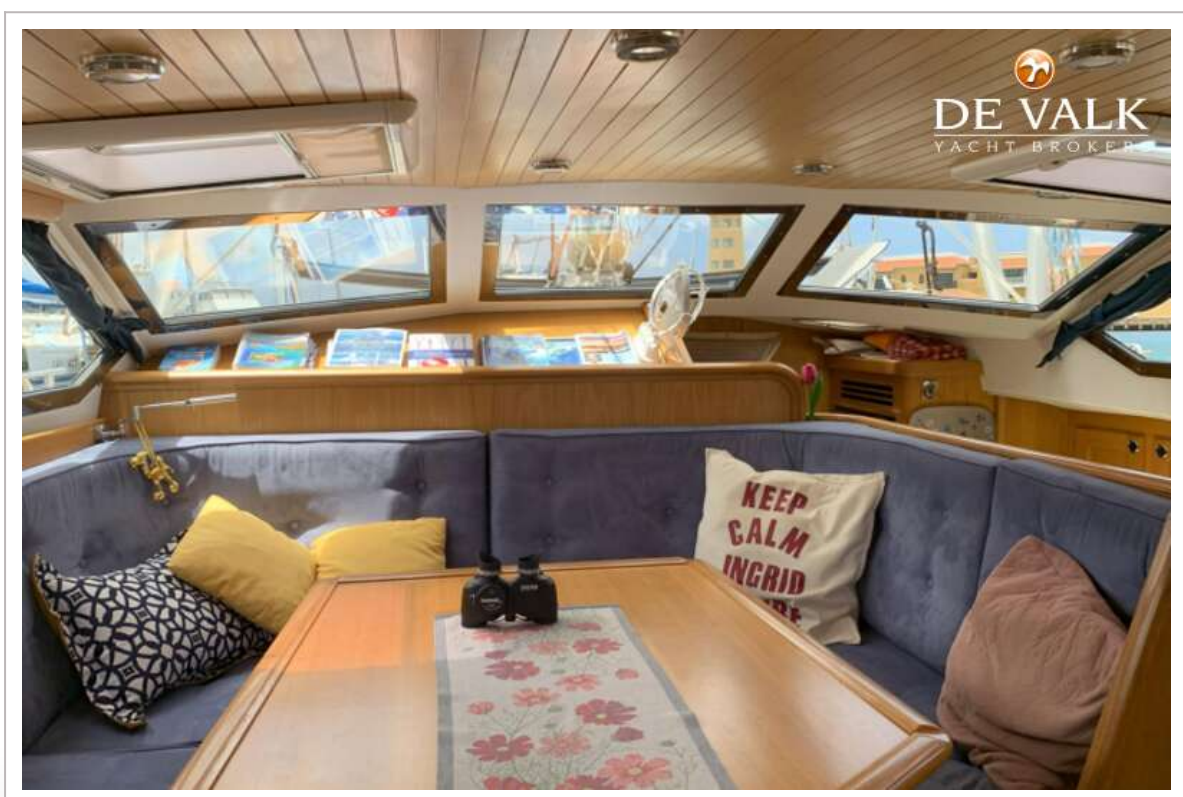
CR YACHTS 480 DS



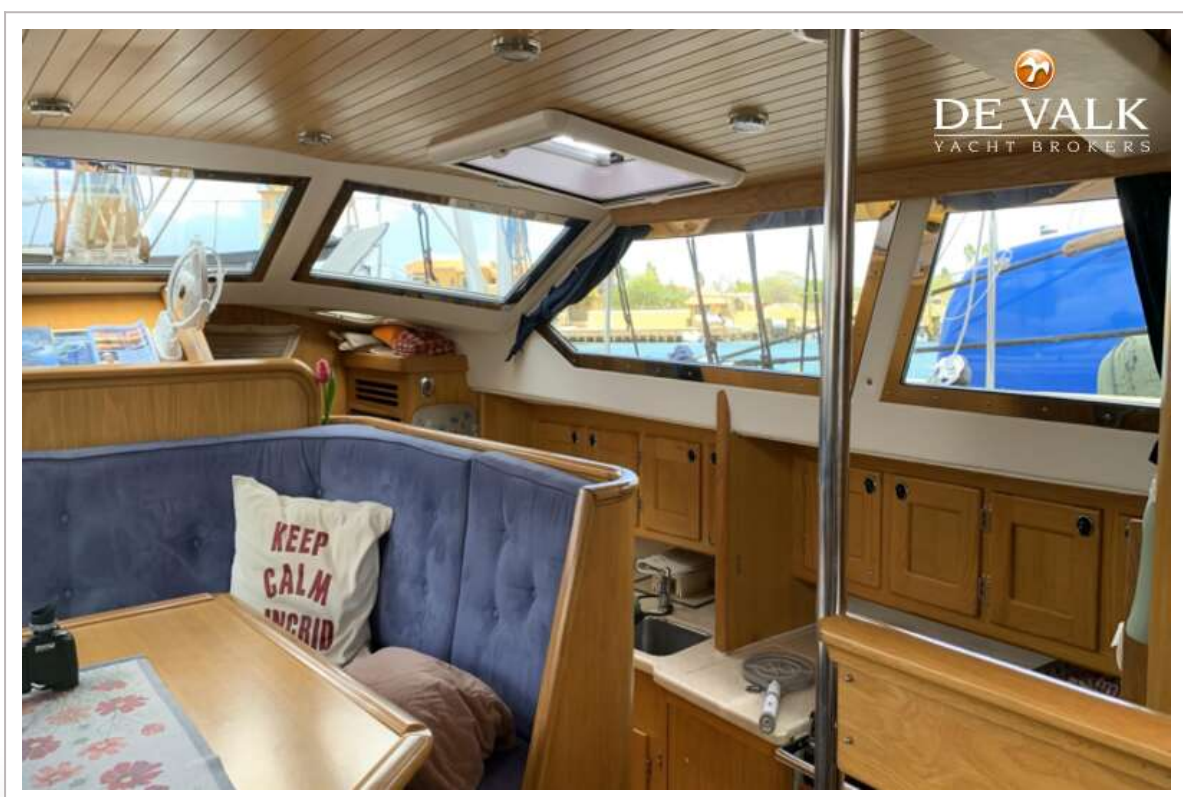
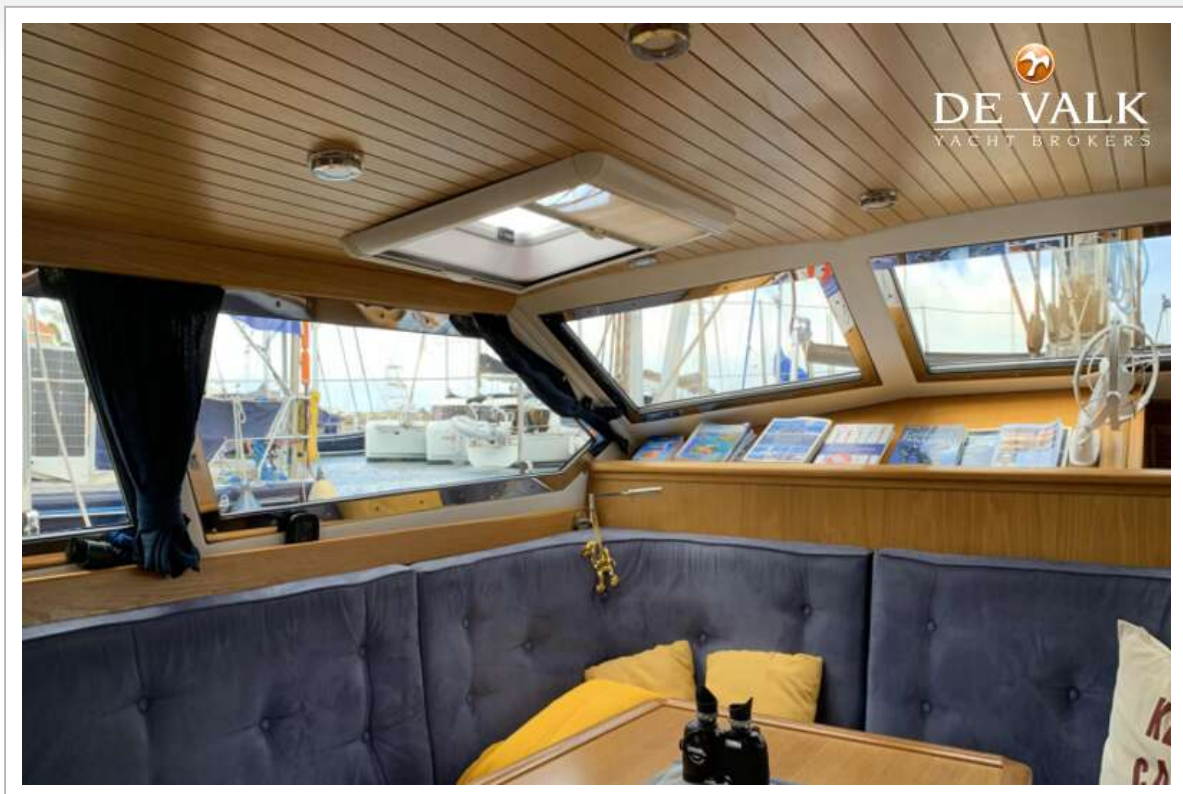
CR YACHTS 480 DS



CR YACHTS 480 DS



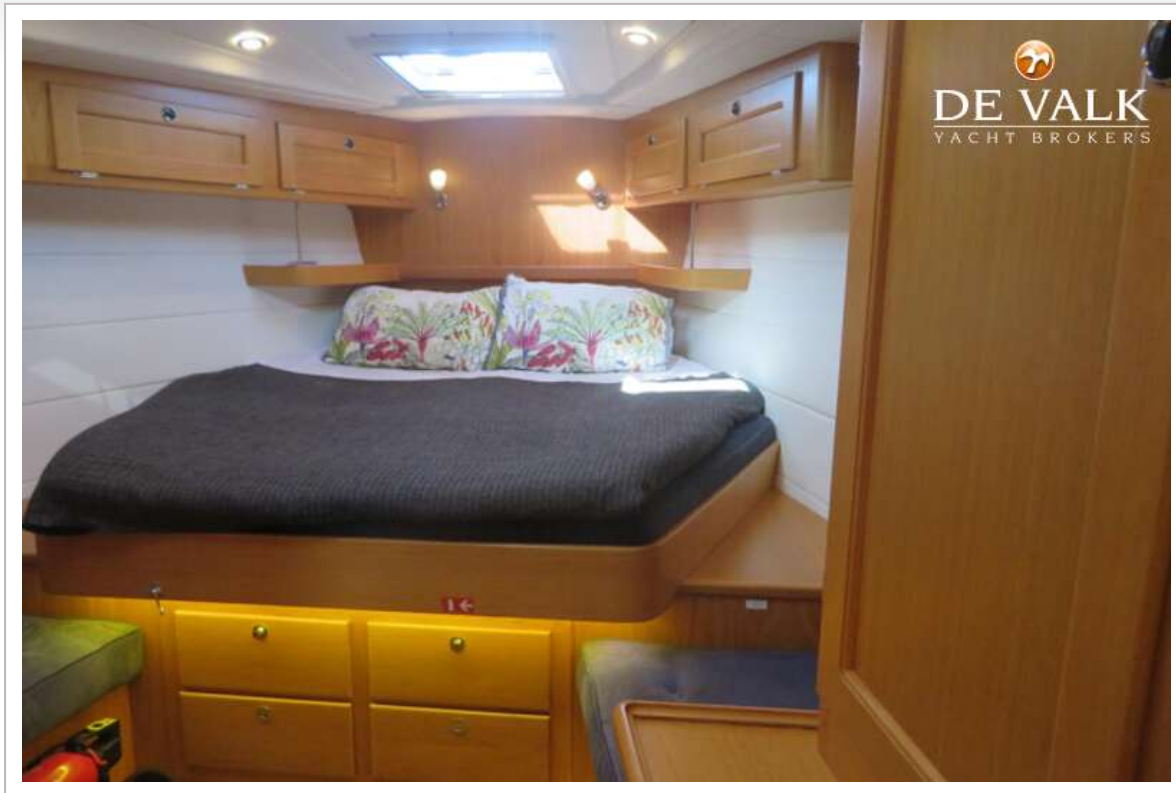
CR YACHTS 480 DS



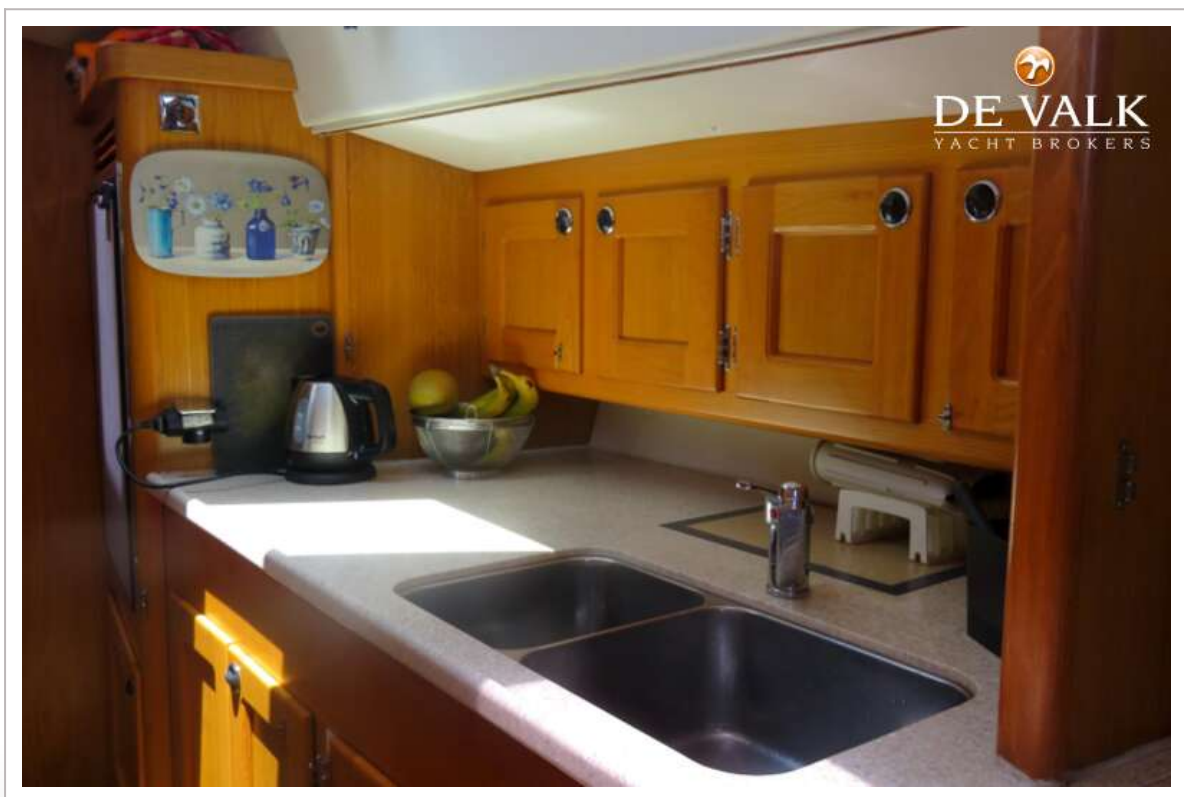
CR YACHTS 480 DS



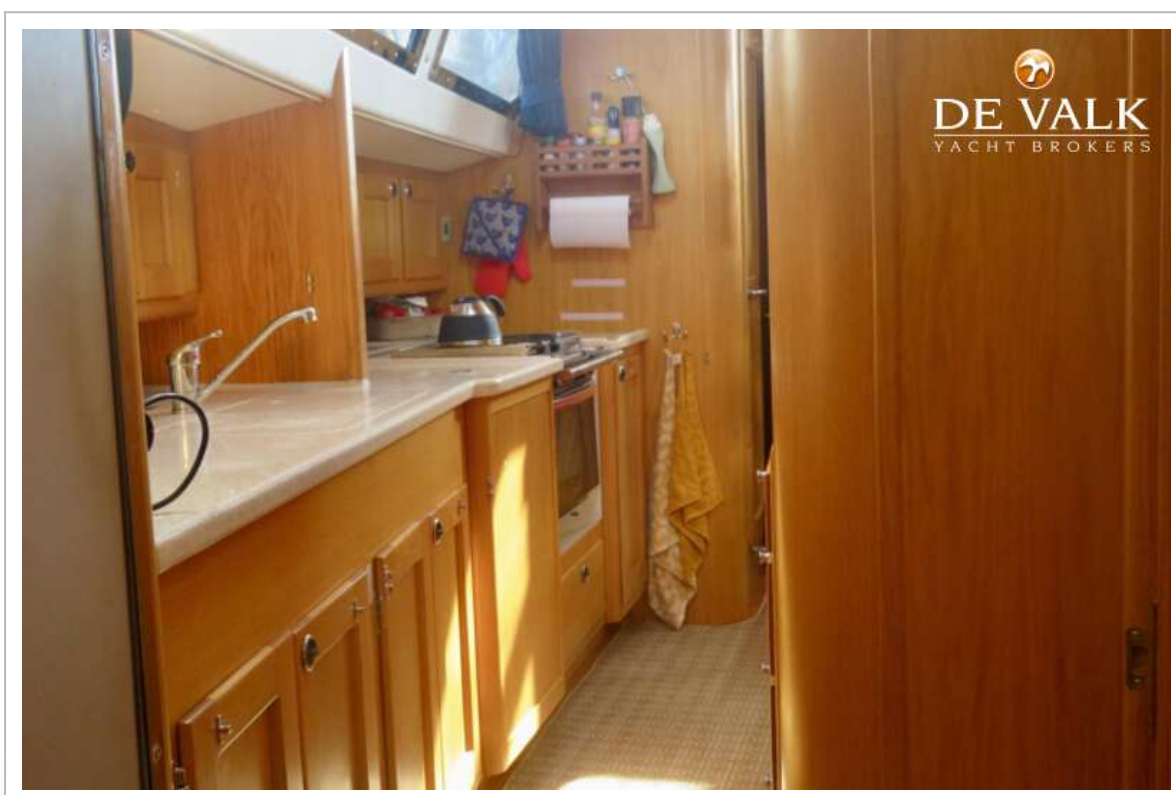
CR YACHTS 480 DS

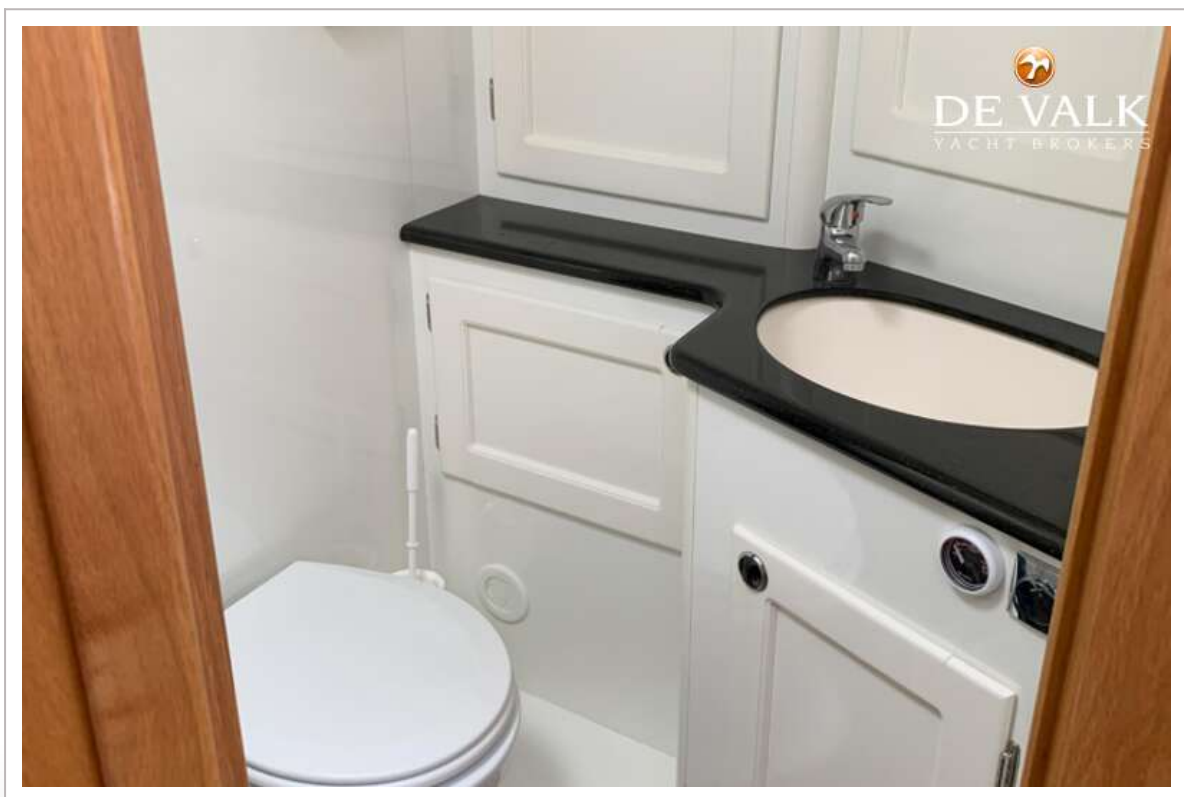


CR YACHTS 480 DS

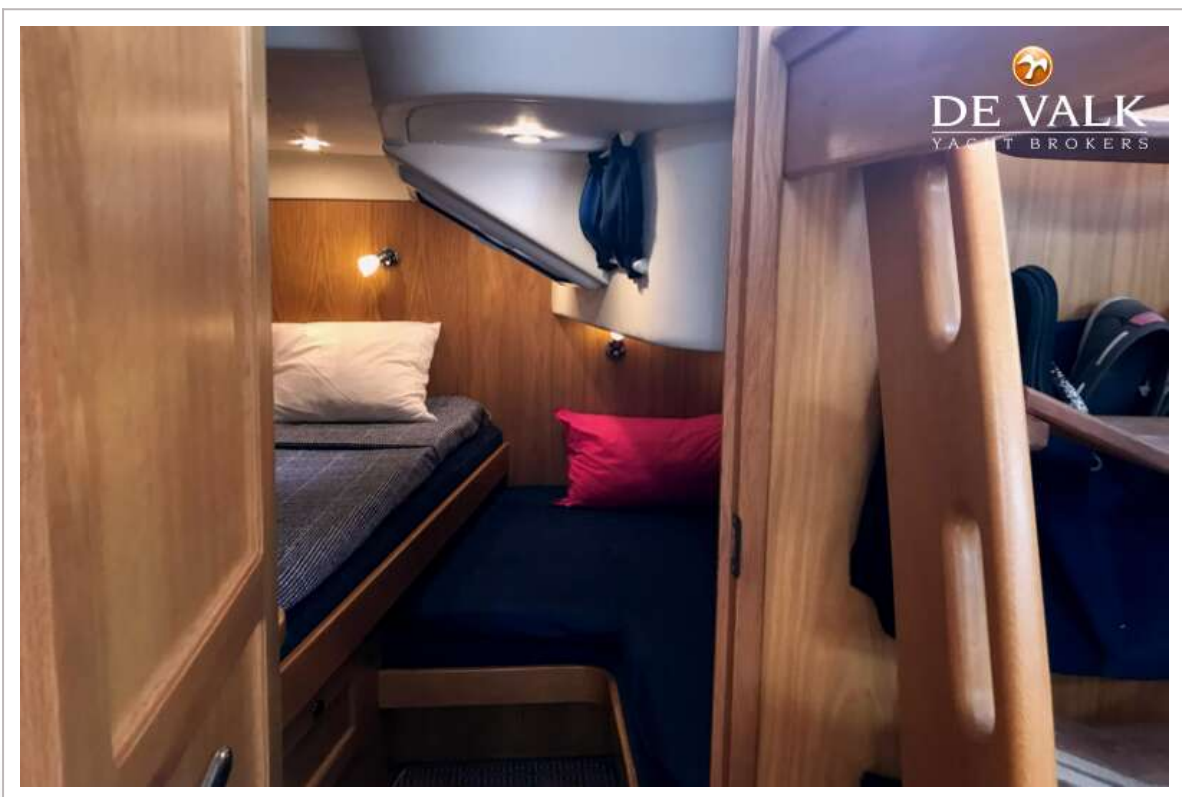


CR YACHTS 480 DS

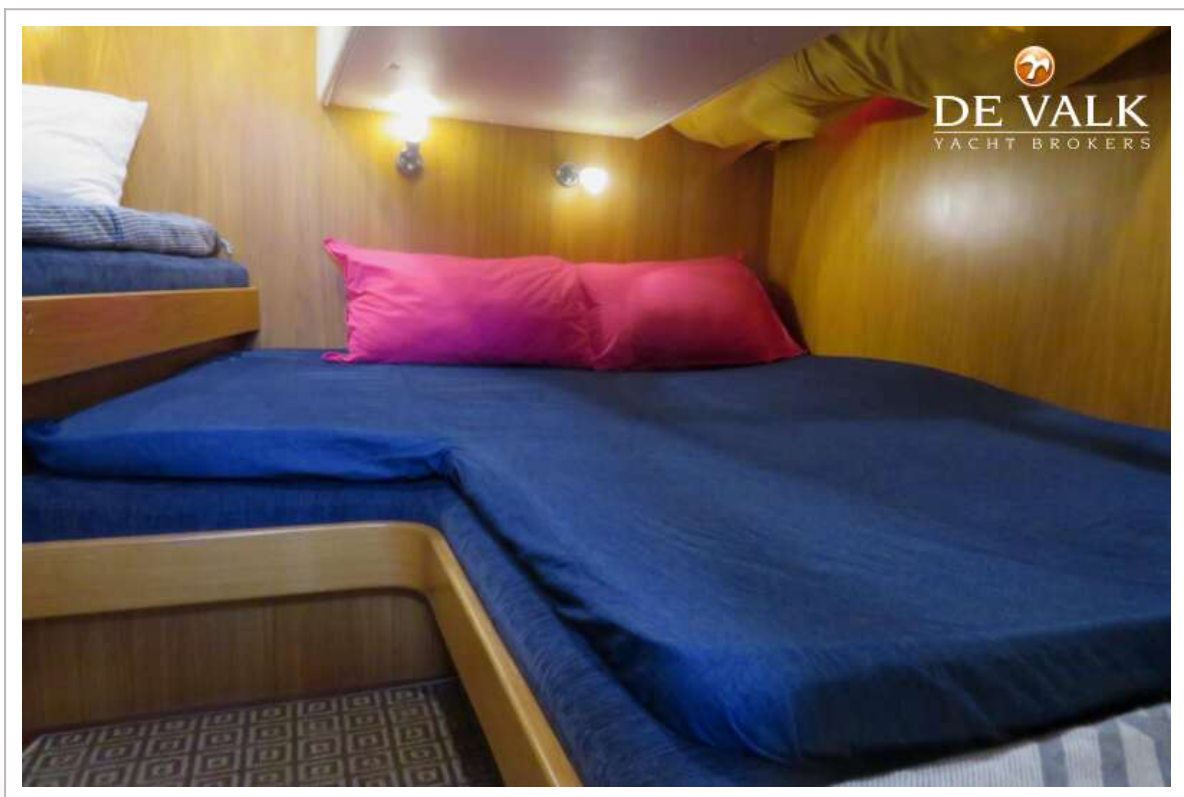




CR YACHTS 480 DS



CR YACHTS 480 DS



CR YACHTS 480 DS



CR YACHTS 480 DS



CR YACHTS 480 DS

