



GRAND BANKS 36 CLASSIC



GRAND BANKS 36 CLASSIC

BROKER'S COMMENTS

With more than 1,200 built, the Grand Banks 36 is one of the most popular models built at the time. The displacement hull with long keel provided stability that gave the Grand Banks 36 a seaworthy reputation. Several layouts were offered over the years. For example, the Jacoba has a two cabin layout with a cabin in the back of the boat where a double and another single bed can be found. The advantage of a classic model is that both cabins have their own toilet. We are open 7 days a week. Be Welcome !!

Henk Jan Vissia

SPECIFICATIONS

Dimensions	11.23 x 3.86 x 1.22 (m)	Builder	American Marine
Built	1990	Cabins	2
Material	GRP	Berths	5
Engine(s)	2 x Ford Lehman 2725 E diesel	Hp/Kw	2 x 135.00 (hp), 99.36 (kw)
Asking price	sold (VAT)	Lying	at sales office

CONTACT

Sales office	De Valk Sneek	Telephone	+31 (0)515 42 80 30
Address	Zwolsmanweg 7 8606 KC Sneek NL	E-mail	sneek@devalk.nl

DISCLAIMER

These particulars are given in good faith as supplied but cannot be guaranteed.



GRAND BANKS 36 CLASSIC

GENERAL

Model	GRAND BANKS 36 CLASSIC
Type	motor yacht
LOA (m)	11,23
LWL (m)	10,72
Beam (m)	3,86
Draft (m)	1,22
Air draft min (m)	3,99
Headroom (m)	2,00
Year built	1990
Builder	American Marine
Country	U.S.A.
Designer	Ken Smith
Displacement (t)	11,8
CE norm	A
Hull material	GRP
Hull colour	white
Hull shape	V-shaped hull
Keel type	long keel
Superstructure material	GRP
Deck material	GRP
Deck finish	teak
Superstructure deck finish	teak
Cockpit deck finish	teak
Antifouling (year)	2023
Window frame	wood
Window material	glass
Deckhatch	yes
Portholes	copper chromed
Flybridge	yes
Flybridge cover	yes



GRAND BANKS 36 CLASSIC

Flybridge cockpit cover	yes
Flybridge suncover	yes
Mast can be lowered	manual
Fuel tank (litre)	aluminium 757 Ltr.
Fuel tank 2 (litre)	aluminium 757 Ltr.
Level indicator (fuel tank)	yes
Freshwater tank (litre)	aluminium 582 Ltr.
Level indicator (freshwater)	yes
Blackwater tank (litre)	200 Ltr.
Wheel steering	mechanical
Inside helm position	yes
Flybridge helm position	mechanical

ACCOMMODATION

Cabins	2
Berths	5
Interior	teak
Floor	teak
Deck saloon	yes
Heating	diesel ducted hot air
Aft Cabin	yes
Sliding door to cockpit	side doors and acces to aftdeck
Opening door to aft deck	yes
Sink	stainless steel
Cooker	calor gas 3 x bottle
Microwave/oven combi	Etna
Fridge	2 X Frigoboat 110 Ltr.
Freezer	2 X In fridge
Hot water system	220V + engine Boiler
Water pressure system	electrical Jabsco
Owners cabin	double bed + single bed 1,95 /1,40 1,95/ 1,00



GRAND BANKS 36 CLASSIC

Bed length (m)	1,95
Wardrobe	hanging and drawers
Bathroom	en suite
Toilet	en suite
Toilet system	electric
Wash basin	in the bathroom
Shower	en suite
Guest cabin 1	v-bed
Bed length (m)	1,95
Wardrobe	hanging and drawers
Bathroom	separate
Toilet	separate
Toilet system	electric
Wash basin	in the bathroom
Shower	en suite

MACHINERY

No of engines	2
Make	Ford Lehman
Type	2725 E
HP	135
kW	99.36
Fuel	diesel
Year installed	1990
Maximum speed (kn)	11
Cruising speed (kn)	7
Consumption (l/hr)	10
Engine hours	2732
Engine cooling system	freshwater heat exchanger
Drive	shaft
Shaft seal	yes



GRAND BANKS 36 CLASSIC

Engine controls	bowden cable
Gearbox	hydraulic
Bowthruster	electric Side-power
Exhaust	watercooled
Propeller type	fixed
Propeller blades	4 x
Propeller shaft material	stainless steel
Shaft lubrication	water
Electrical installation	12 V/ 220 V
Generator	Westerbeke
Bowthruster battery	yes
Battery monitor	Mastervolt
Battery charger/inverter	Sentry Cruisair
Shorepower	with cable

NAVIGATION

Depth sounder/log	Raymarine ST 60+
VHF	Garmin GHS 10i
Autopilot	Simrad AP24
Radar	Navico
Radar/GPS/plotter	Simrad NSS

EQUIPMENT

TV	Akai
----	------



GRAND BANKS 36 CLASSIC



GRAND BANKS 36 CLASSIC



GRAND BANKS 36 CLASSIC



GRAND BANKS 36 CLASSIC



GRAND BANKS 36 CLASSIC



GRAND BANKS 36 CLASSIC



GRAND BANKS 36 CLASSIC



GRAND BANKS 36 CLASSIC



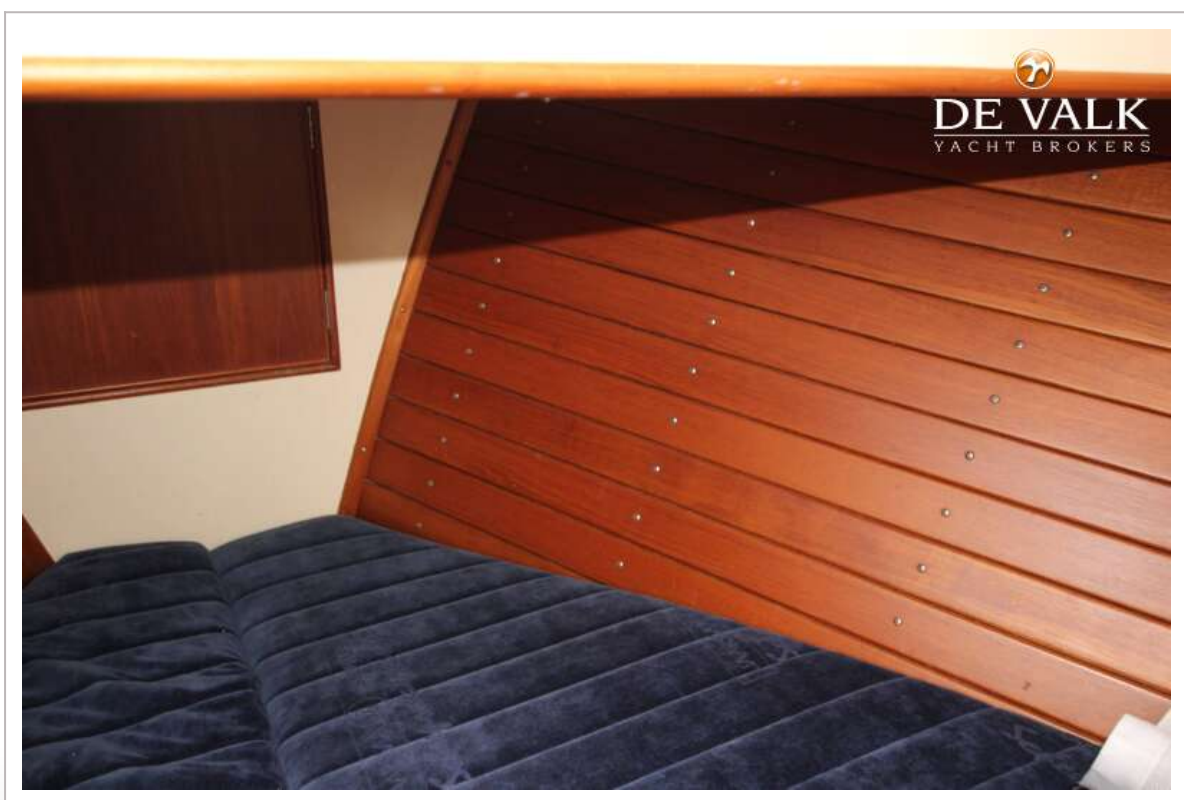
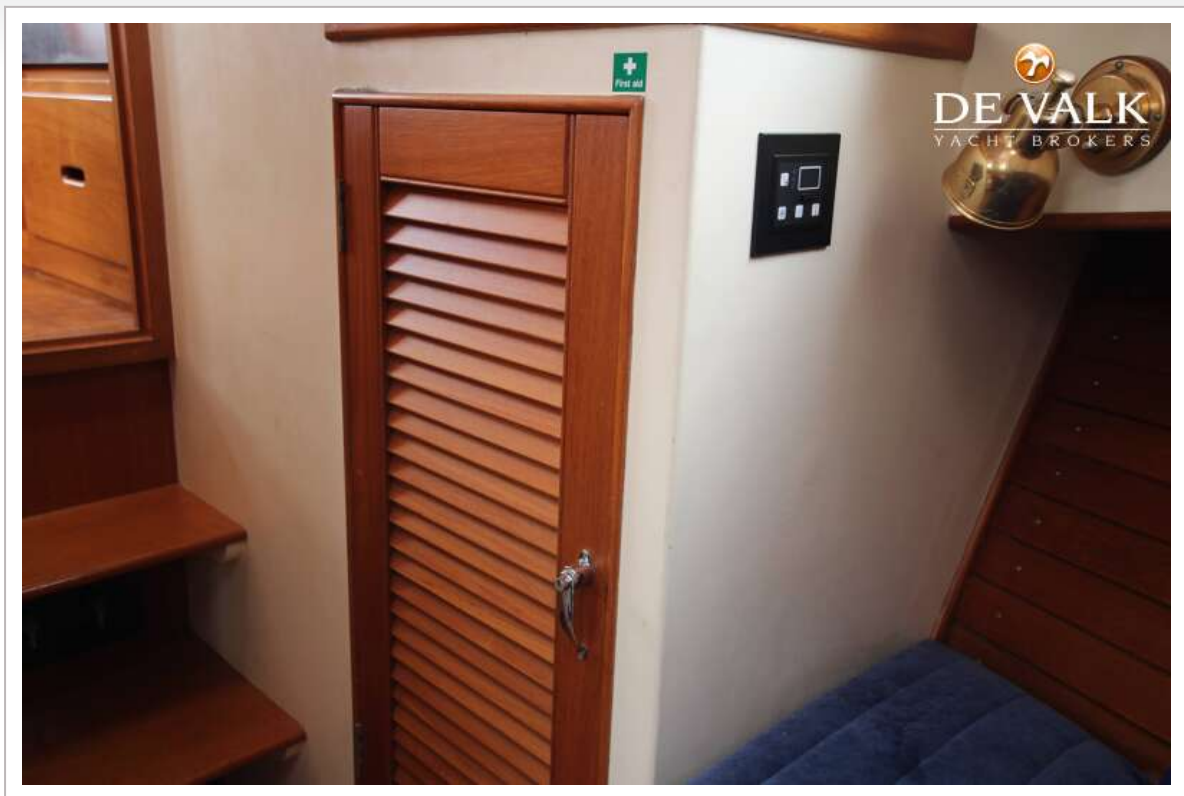
GRAND BANKS 36 CLASSIC



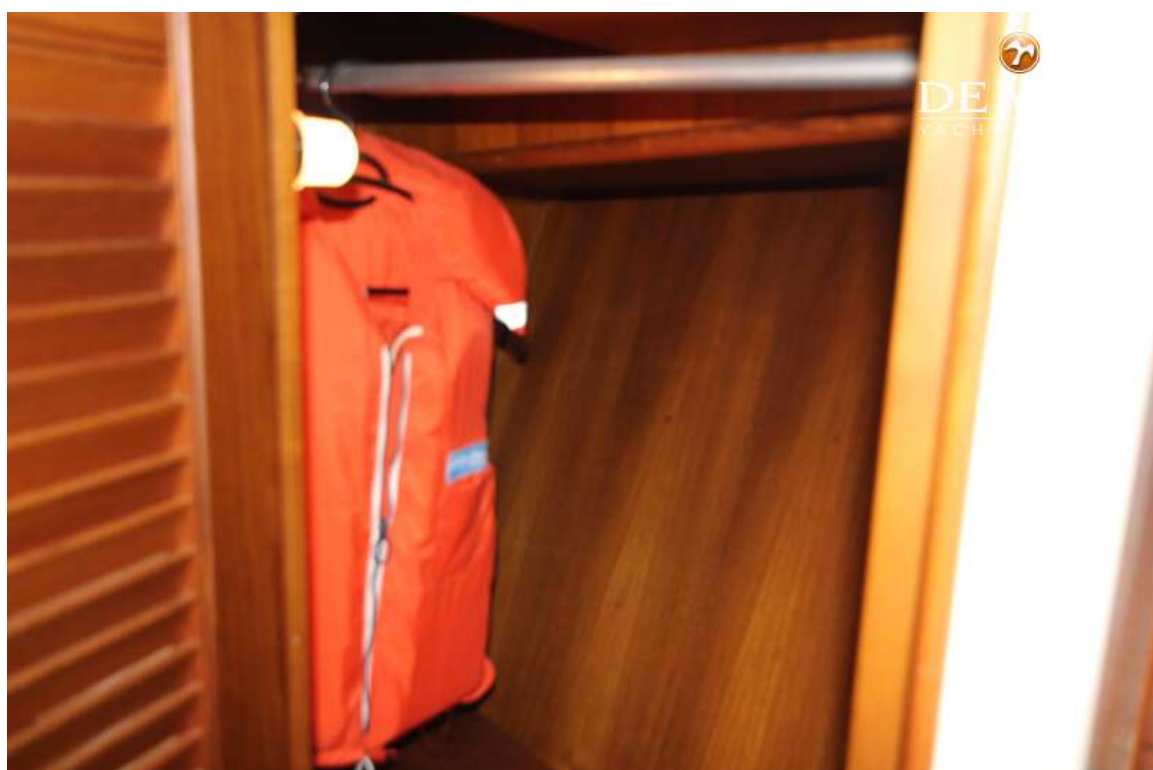
GRAND BANKS 36 CLASSIC



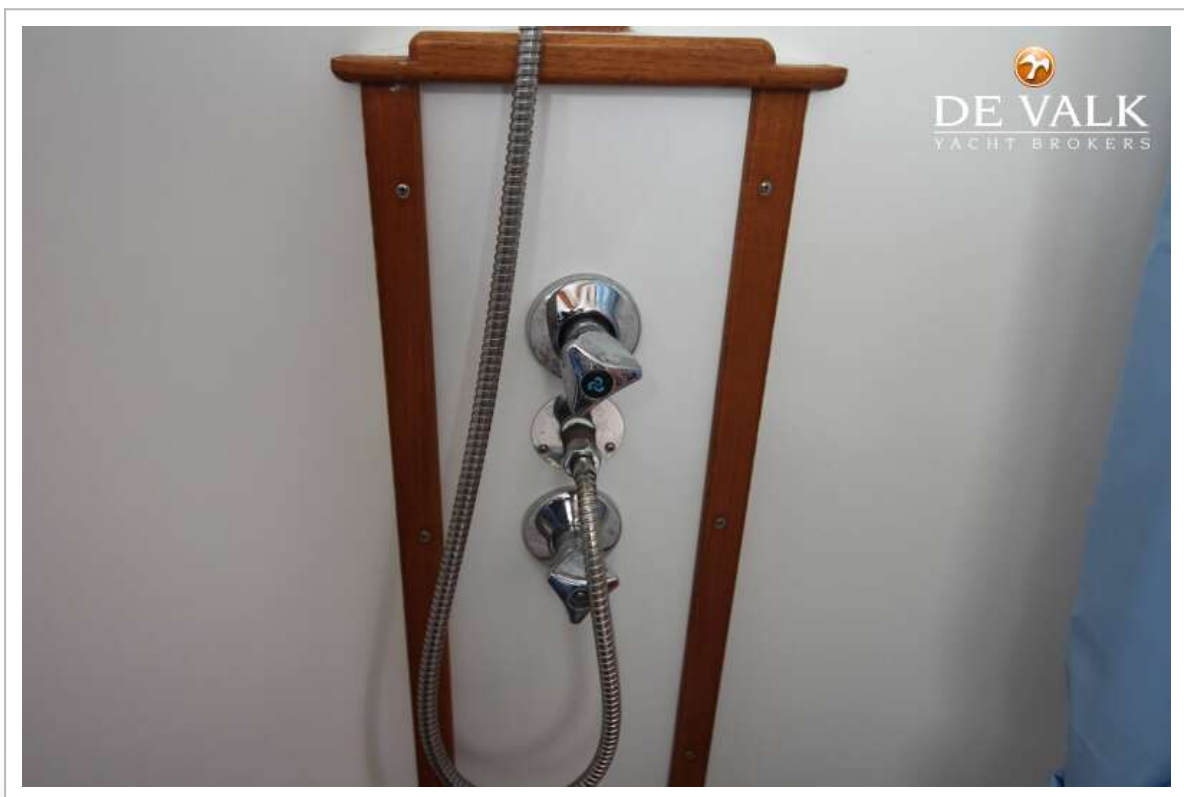
GRAND BANKS 36 CLASSIC



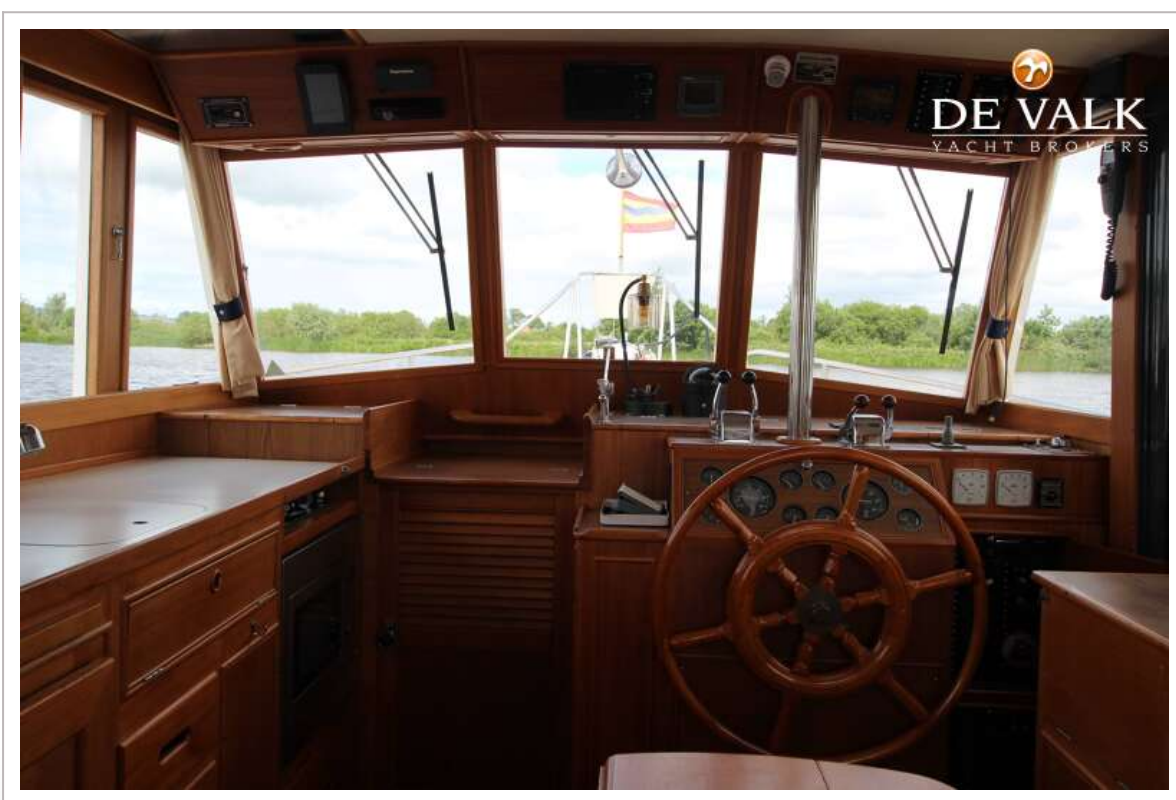
GRAND BANKS 36 CLASSIC



GRAND BANKS 36 CLASSIC



GRAND BANKS 36 CLASSIC



GRAND BANKS 36 CLASSIC



GRAND BANKS 36 CLASSIC



GRAND BANKS 36 CLASSIC



GRAND BANKS 36 CLASSIC



GRAND BANKS 36 CLASSIC

