



HANSE 470E

HANSE 470E

BROKER'S COMMENTS

This beautiful Hanse 470E is in good condition and is well equipped and has had many parts replaced in the last 3 years. Large and secure cockpit rigged for short-handed sailing, with 3 electric winch, self-tacking jib and retractable bow thruster, plus a more powerful engine. The popular layout with a double bed in the center line at the front and two double beds at the back. Ideal for performance sailing & cruises with family and friends. The yacht is in Greece and can be visited by appointment.

Ger Bayens

SPECIFICATIONS

Dimensions	14.19 x 4.46 x 2.60 (m)	Builder	Hanse Yachts AG
Built	2009	Cabins	3
Material	GRP	Berths	6
Engine(s)	1 x Yanmar 4JH2-TE diesel	Hp/Kw	75.00 (hp), 55.20 (kw)
Asking price	sold (VAT)	Lying	contact sales office

CONTACT

Sales office	De Valk Thuishaven	Telephone	+31 35 5829042
Address	Peperstraat 7 1411 PX Naarden NL	E-mail	thuishaven@devalk.nl

DISCLAIMER

These particulars are given in good faith as supplied but cannot be guaranteed.



GENERAL

Model	HANSE 470E
Type	sailing yacht
LOA (m)	14,19
LWL (m)	12,60
Beam (m)	4,46
Draft (m)	2,60
Air draft (m)	26,00
Headroom (m)	1,96
Year built	2009
Launched	2011
Builder	Hanse Yachts AG
Country	Germany
Designer	Judel / Vrolijk & Co
Displacement (t)	12
Ballast (tonnes)	lead 3
CE norm	A
Hull material	GRP
Hull colour	grey Light grey
Hull shape	round-bilged
Keel type	fin keel with bulb Stainless keelbolts
Rubbing strake	stainless steel
Deck material	teak
Deck finish	teak
Cockpit deck finish	teak
Antifouling (year)	2023
Window material	polycarbonate
Deckhatch	yes
Portholes	yes
Fuel tank (litre)	stainless steel 250
Level indicator (fuel tank)	yes



Freshwater tank (litre)	stainless steel 400
Level indicator (freshwater)	yes
Blackwater tank (litre)	stainless steel 2 x 30
Wheel steering	mechanical Jefa / leather renewed (2022) with wheel covers
Emergency tiller	yes
More info on hull	The hull is made of epoxy resin/polyester and is strong and water resistant
Extra info	All seacocks renewed

ACCOMMODATION

Cabins	3
Berths	6
Interior	cherry Ohio
Floor	wood
Saloon	yes
Headroom saloon (m)	1,96
Heating	yes
Navigation center	yes
Chart table	yes
Aft Cabin	yes
Dinette	yes
Opening door to cockpit	yes
Galley	yes
Countertop	corian
Sink	corian 2x
Cooker	ENO
Oven	ENO
Microwave/oven combi	220V
Fridge	Isotherm 12vDC 130 litre fridge
Water pressure system	electrical
Owners cabin	French bed



Bed length (m)	2,00 x 1,46
Wardrobe	yes
Bathroom	en suite
Toilet	en suite
Toilet system	manual
Wash basin	in the bathroom
Shower	en suite
Bath tub	en suite
Guest cabin 1	double bed
Bed length (m)	2,00 x 1,50
Wardrobe	yes
Bathroom	shared
Toilet	shared
Toilet system	manual
Wash basin	in the bathroom
Shower	shared
Guest cabin 2	double bed
Bed length (m)	2,00m x 1,50
Wardrobe	yes
Bathroom	separate
Toilet	yes

MACHINERY

No of engines	1
Make	Yanmar
Type	4JH2-TE
HP	75
kW	55.20
Fuel	diesel
Year installed	2009
Maximum speed (kn)	8



Cruising speed (kn)	7
Consumption (l/hr)	4,5
Engine hours	1250
Engine cooling system	freshwater heat exchanger
Drive	sail-drive
Saildrive seal	renewed 2021
Engine controls	bowden cable
Gearbox	mechanical Gearbox overhauled (2022)
Bowthruster	electric Max Power Vip 150 retractable
Exhaust	watercooled
Propeller type	folding
Propeller blades	3
Manual bilge pump	yes
Electric bilge pump	yes
Electrical installation	12/220V
Batteries	yes
Start battery	2x 12V 90 Ah
Service battery	4x 12V 95 Ah (2023)
Bowthruster battery	2X
Battery charger/inverter	12V/220V 20Amp Victron Combi
Solar panel	590W Solbian Solar Panels (2021)
Diode battery combiners	yes
Shorepower	with cable
Watermaker	Spectra Ventura (2021)

NAVIGATION

Compass	Plastimo Contest 130
Electric compass	on the autopilot Simrad
Depth sounder/log	Simrad IS20
Windset	Simrad IS20
VHF	Simrad RS82 with DSC



VHF handheld	yes
Autopilot	Simrad AP44 (2024)
Radar/GPS/plotter	GPS, radar and chart plotter B & G (2019)
EPIRB	Ocean Signal 406 mhz CAT 1 GPS EPIRB (2020)

EQUIPMENT

Sprayhood	yes
Bimini	yes
Cockpit cushions	yes
Cockpit table	yes
Boarding ladder	stainless steel
Gangway	yes
Deck shower	yes
Anchor	Delta 25 Kg
Anchor chain	80 mtr stainless steel (2021)
Windlass	electrical Lewmar 12V DC Controled (2022)
Capstan	Lewmar 12V DC
Deck wash	in the anchor locker
Dinghy	3D dinghy 2,80 (2022)
Outboard	Mercury 9.9 (2022)
Sea railing	yes
Railing side opening gates	2x
Pushpit	yes
Pulpit	yes
Life raft	Plastimo (2020)
Life raft (pers)	6
Lifejackets	6x
Lifebuoy	2x
Fenders	yes
Mooring lines	yes
Sub-woofer	(2022)



Speakers in salon	Kicker Speaker set (2022)
Fire extinguisher	2x (2020)
Extra info	Fusion HIFI set (2022),

RIGGING

Rigging	fractional
Standing rigging	wire 2009
Brand mast	Seldén
Material mast	aluminium
Spreaders	3 sets
Keel stepped mast	yes
Mainsail cover	with lazy jacks
Battcars	Harken
Fully battened mainsail	Doyle Stratis (2019)
Jib	Doyle Stratis (2019)
Genoa furler	Harken
A-symmetric spi	with snuffer
Self tacking jib installation	yes
Reefing System	quick-one-line-reefing
Backstay adjuster	yes
Boomvang	mechanical and tackle
Primary sheet winch	Electric 2x Lewmar 54STE
Secondary sheet winch	2x 46 ST
Spinnaker winch	2x
Reefing winch	yes



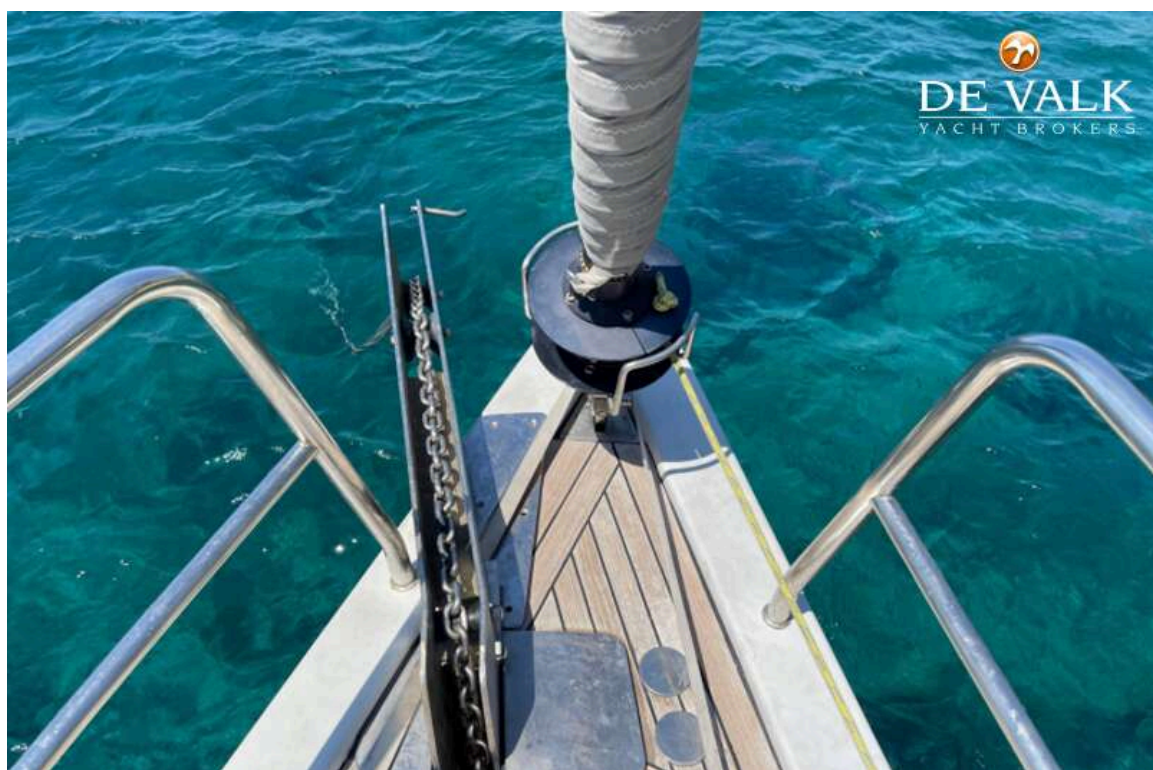
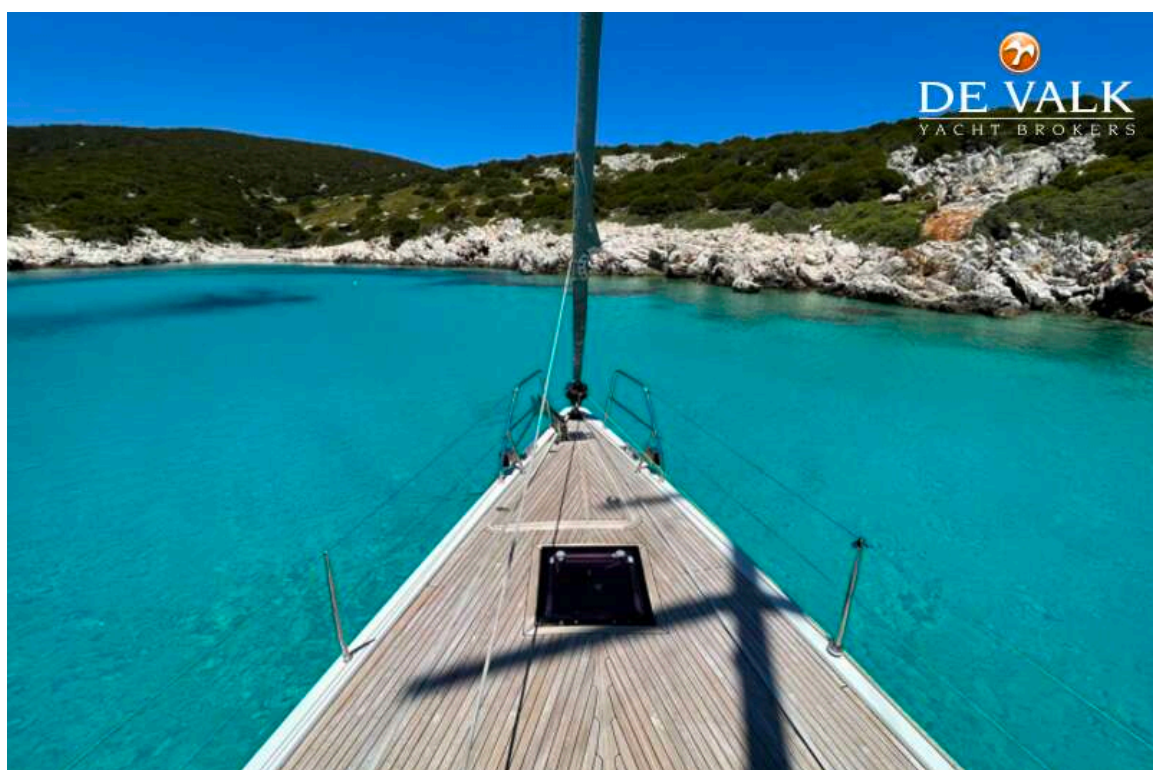
HANSE 470E



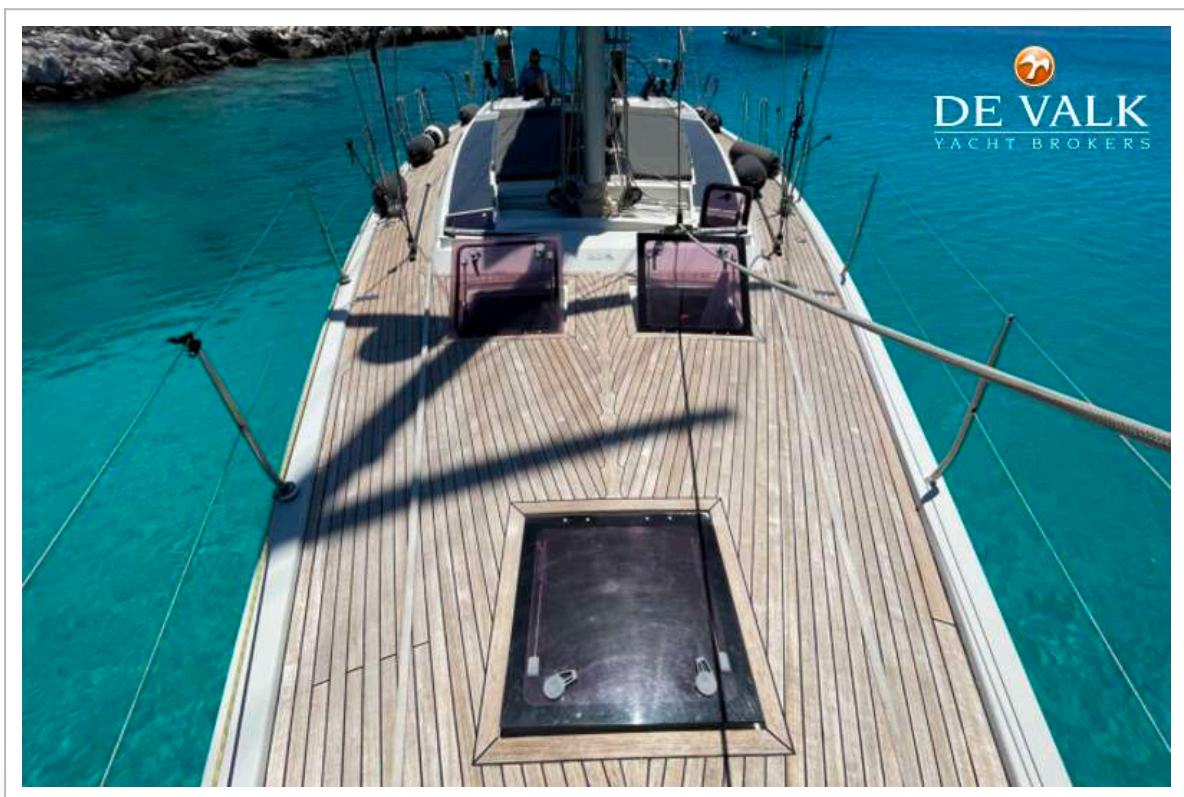
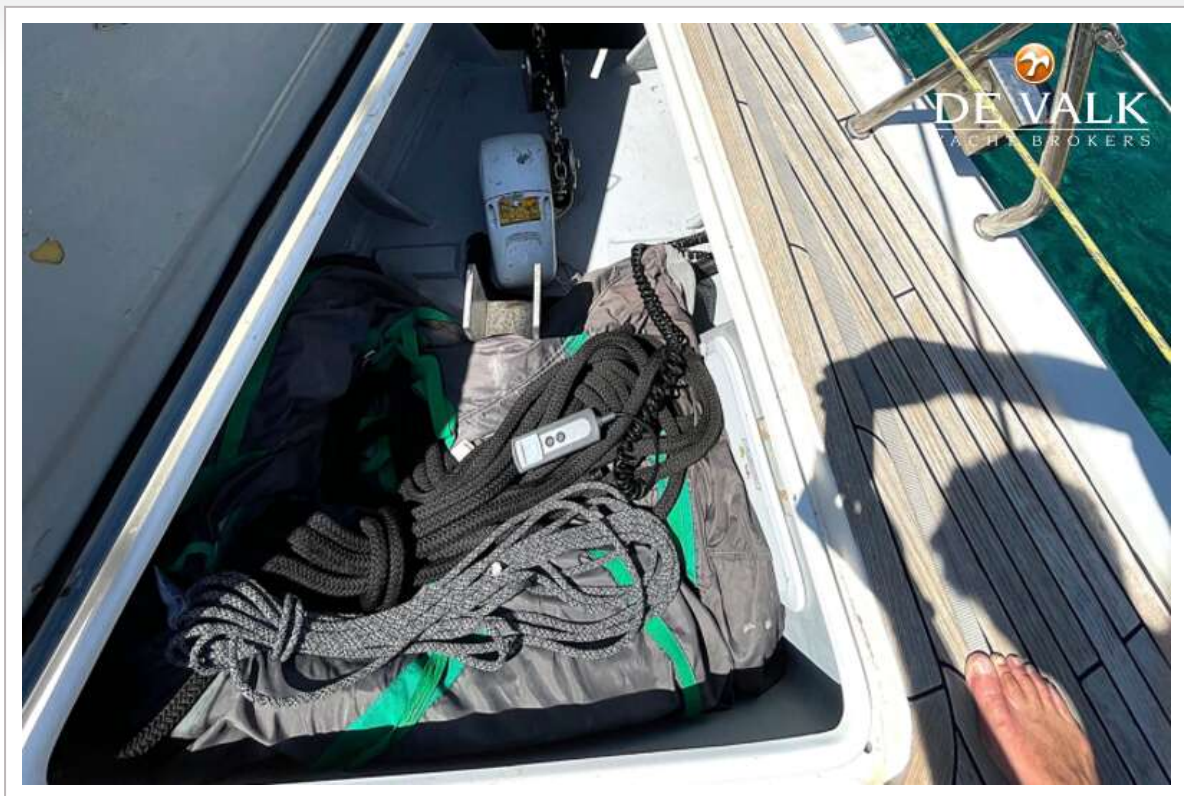
HANSE 470E



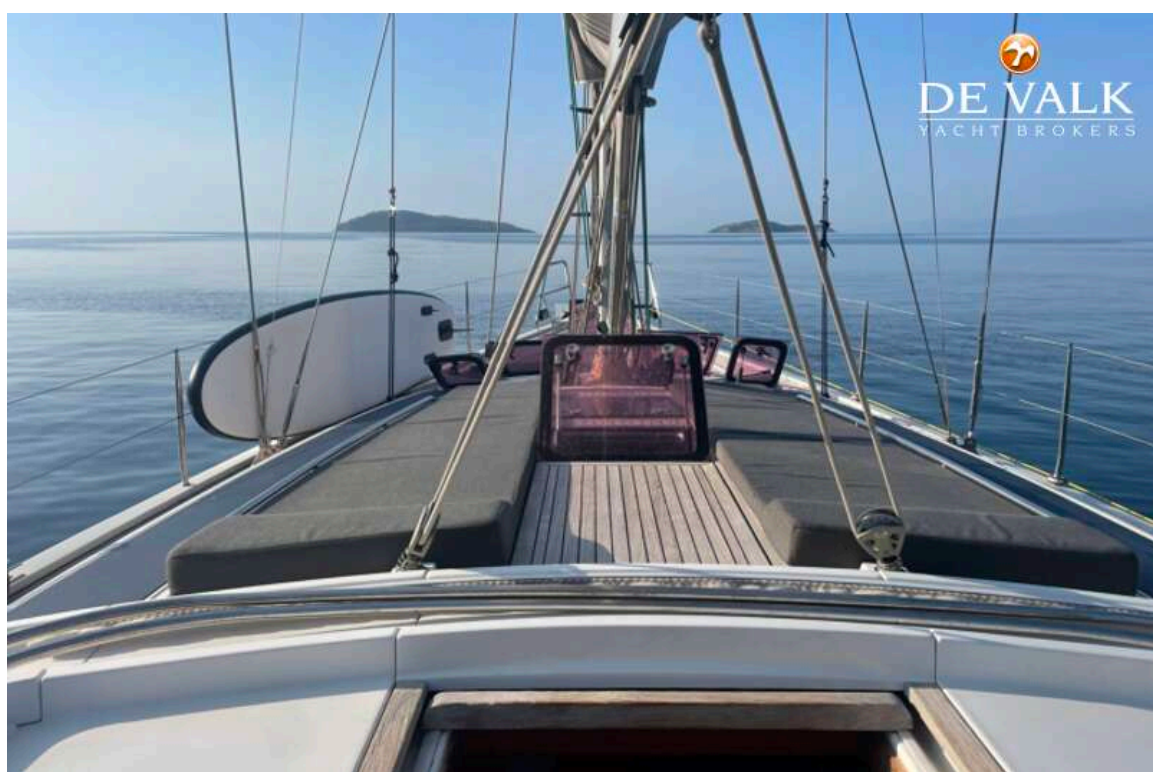
HANSE 470E



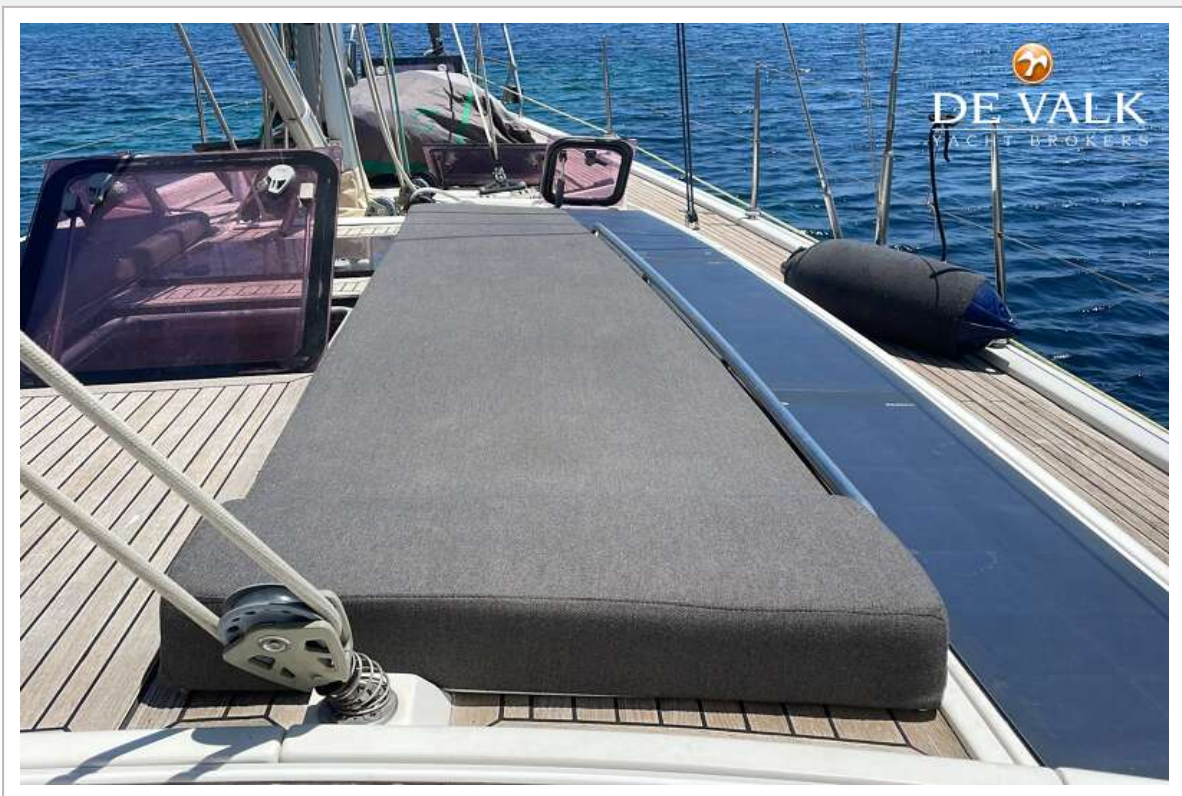
HANSE 470E



HANSE 470E



HANSE 470E



HANSE 470E



HANSE 470E



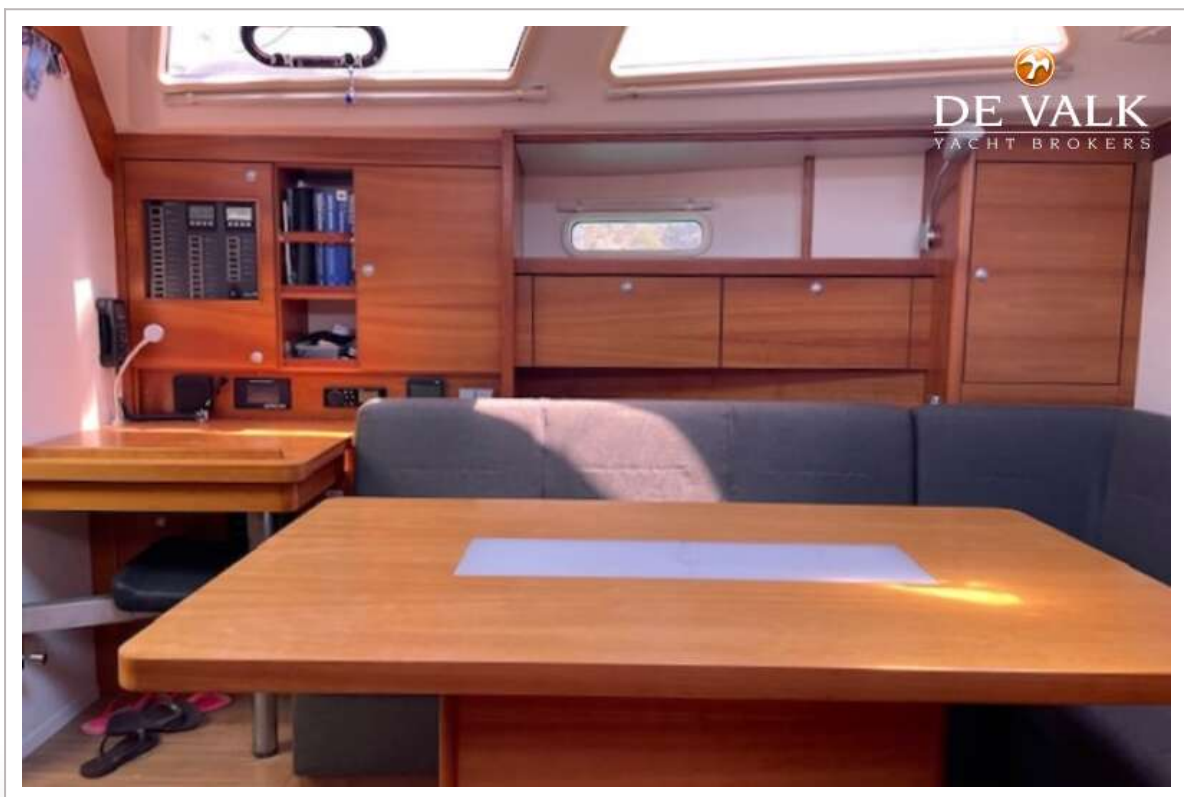
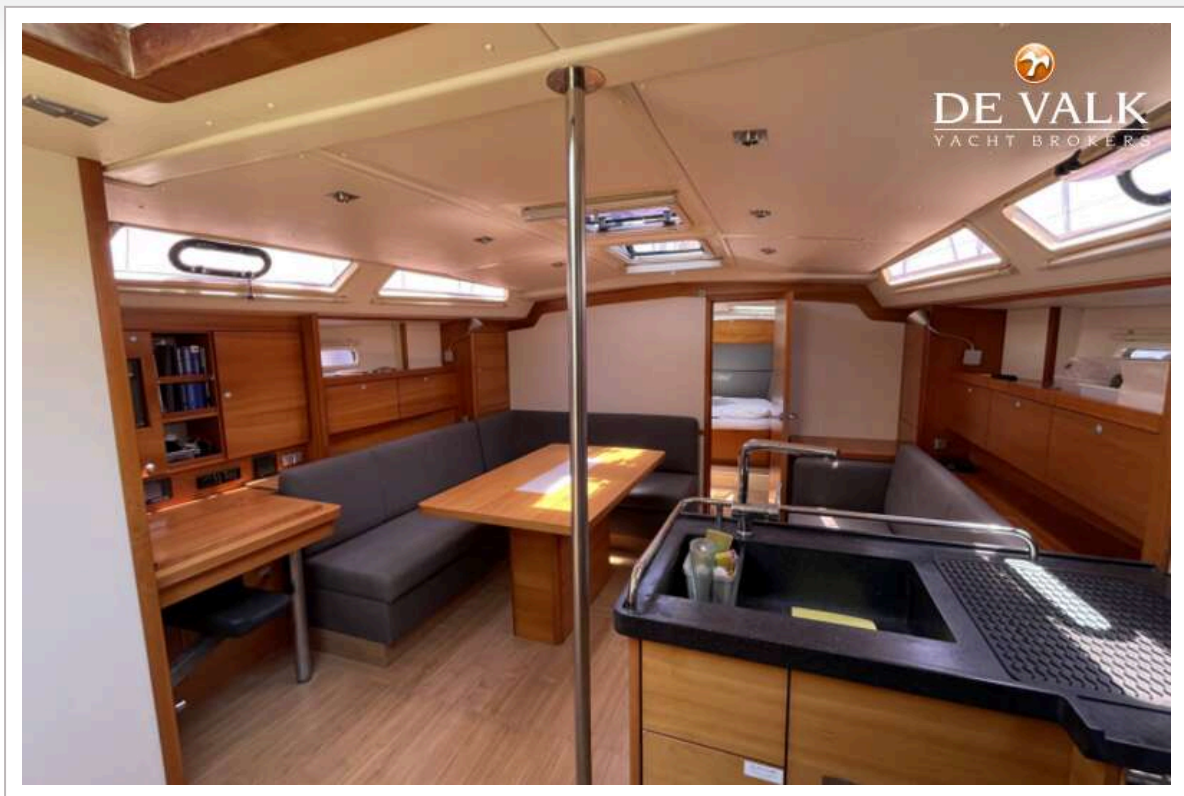
HANSE 470E



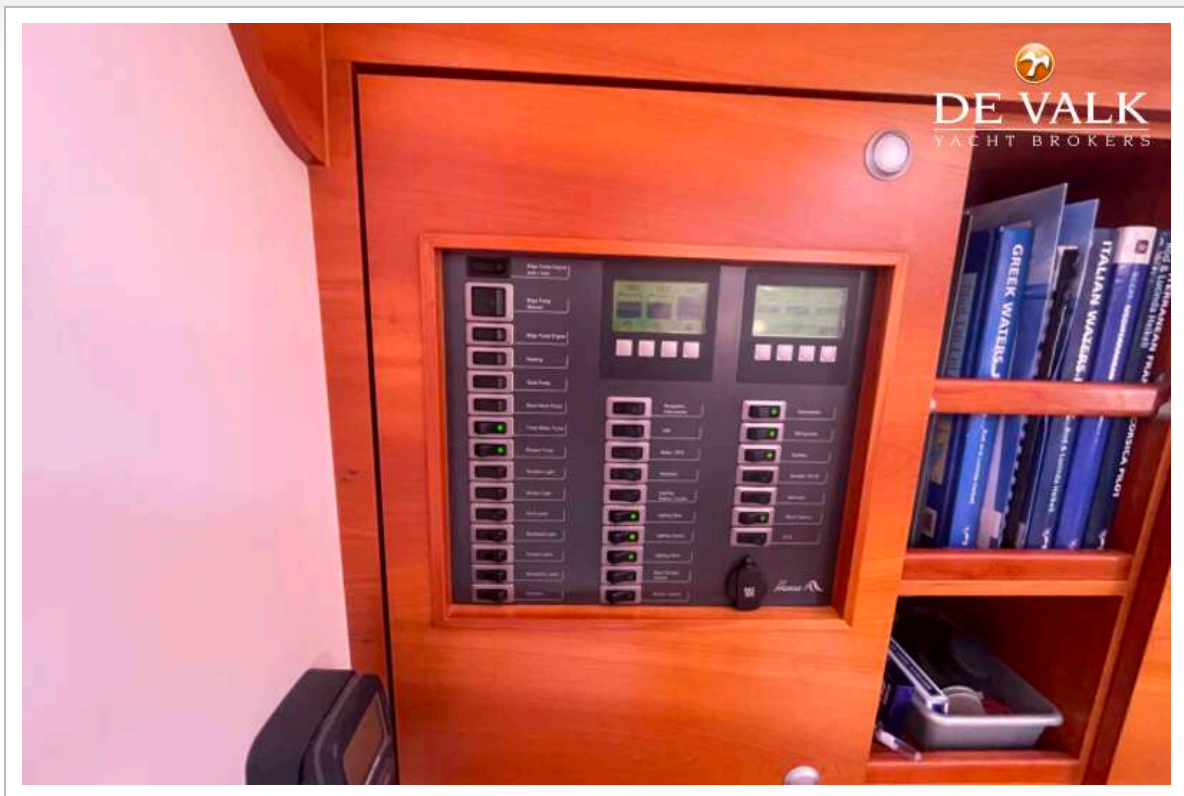
HANSE 470E



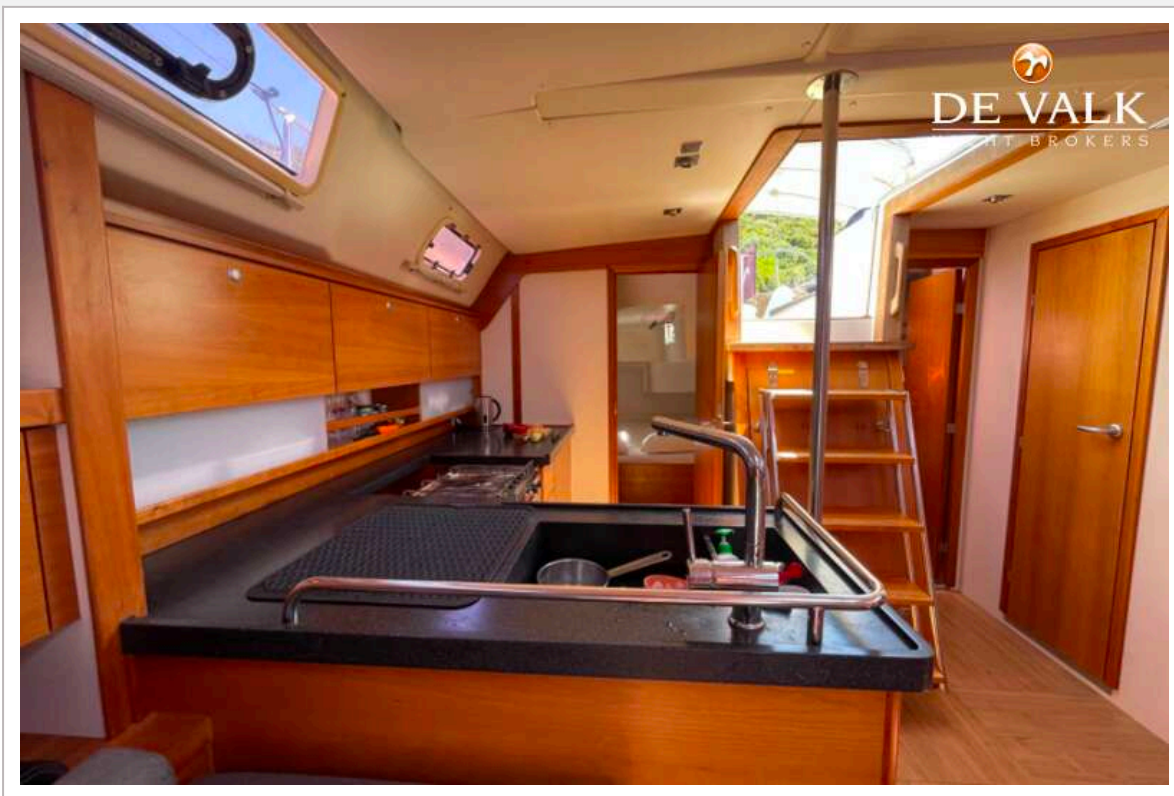
HANSE 470E



HANSE 470E



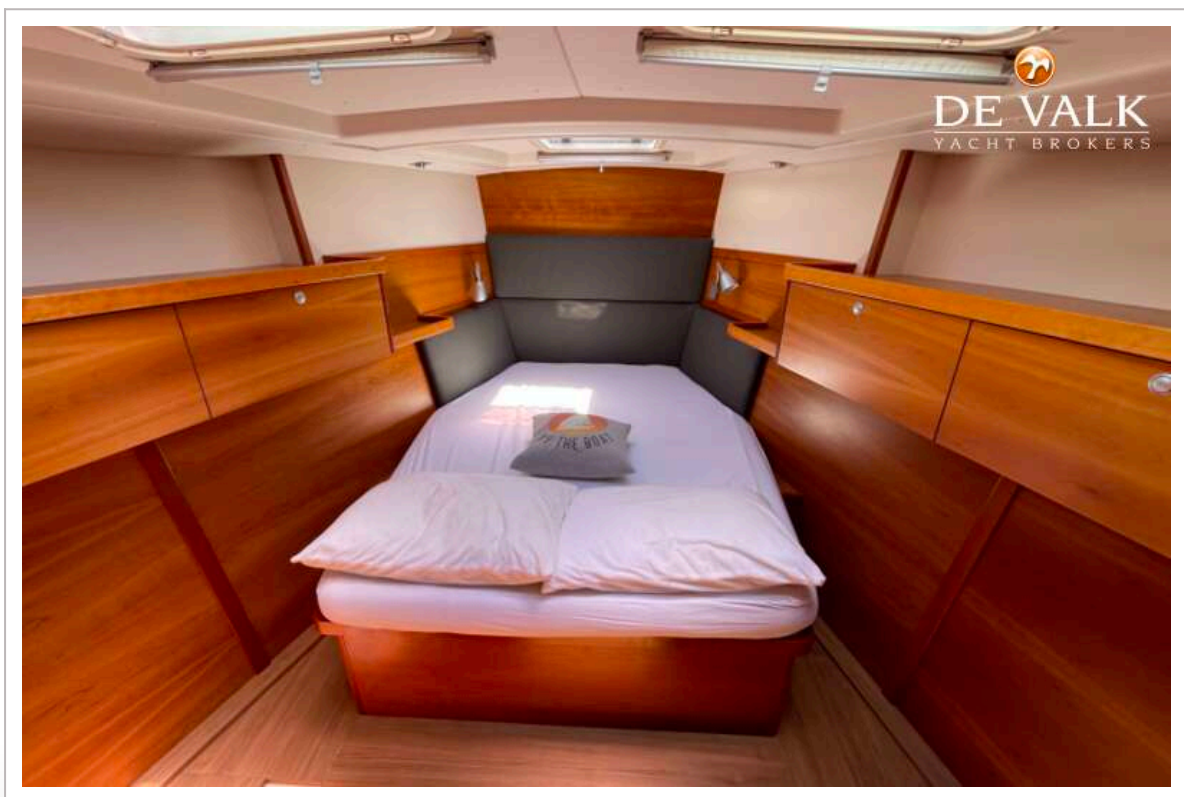
HANSE 470E



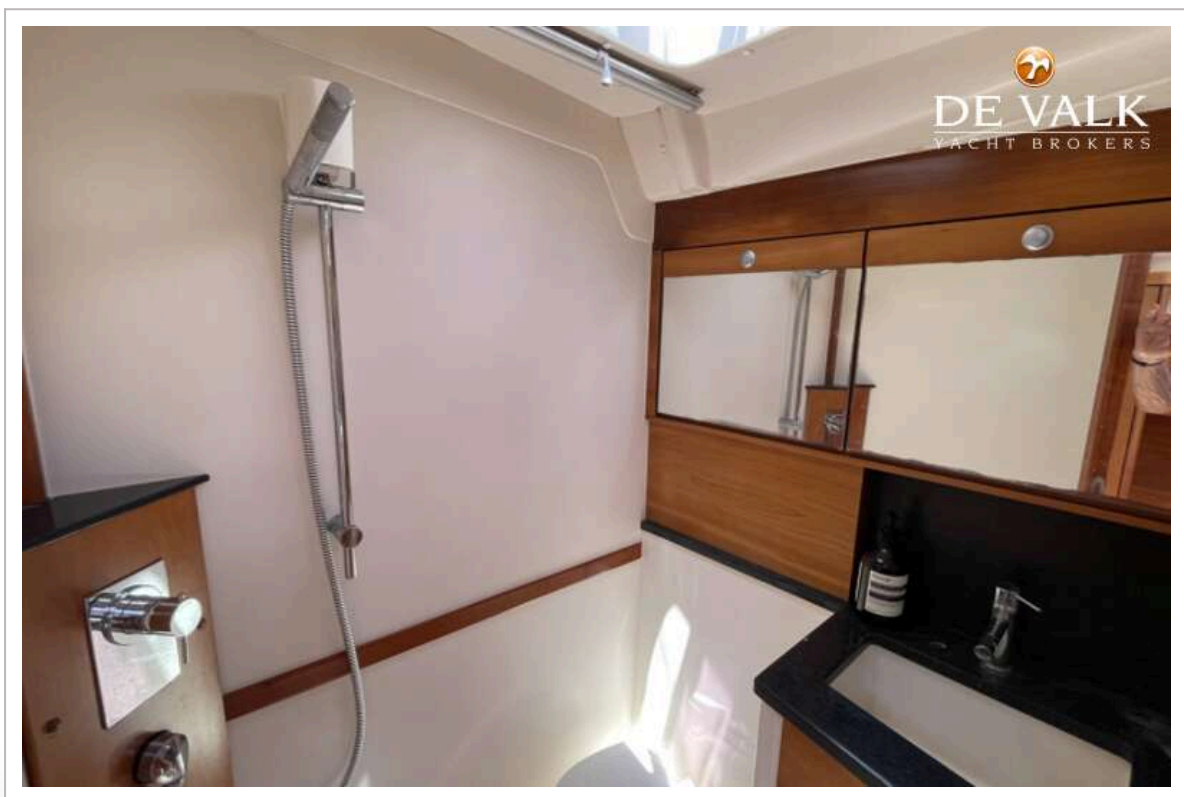
HANSE 470E



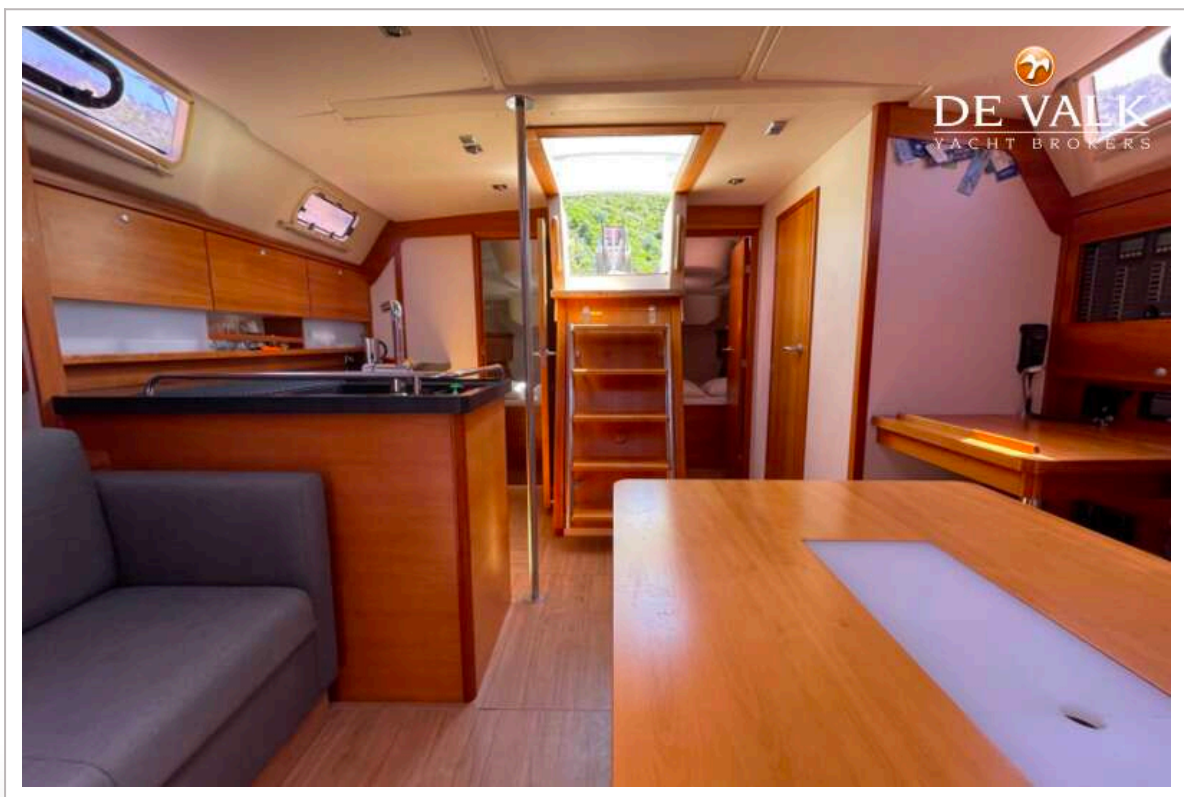
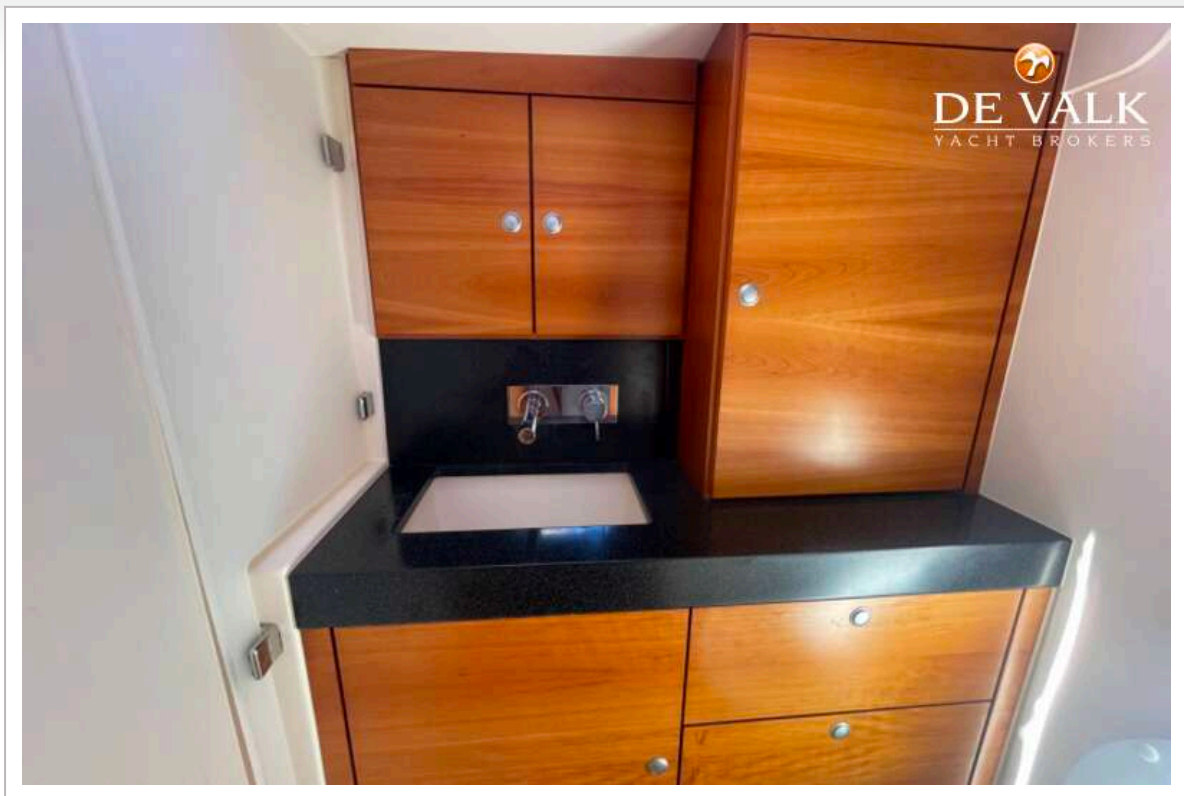
HANSE 470E



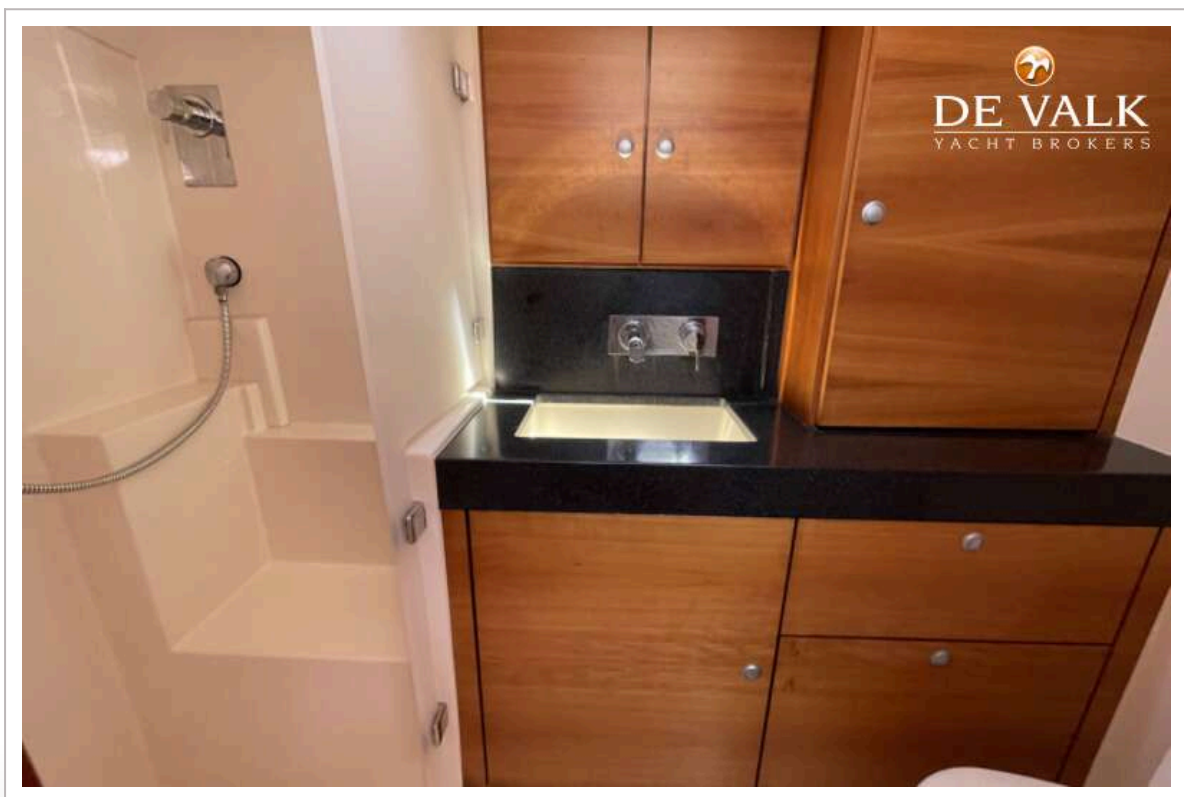
HANSE 470E



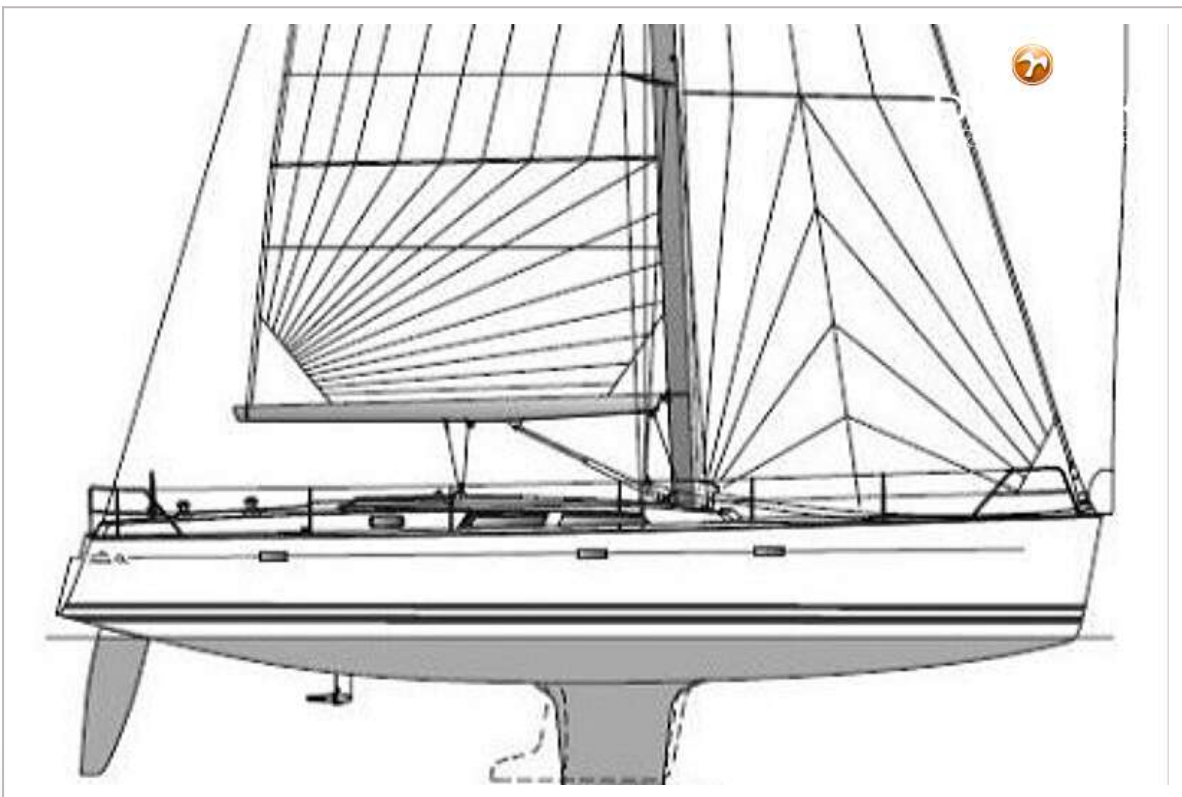
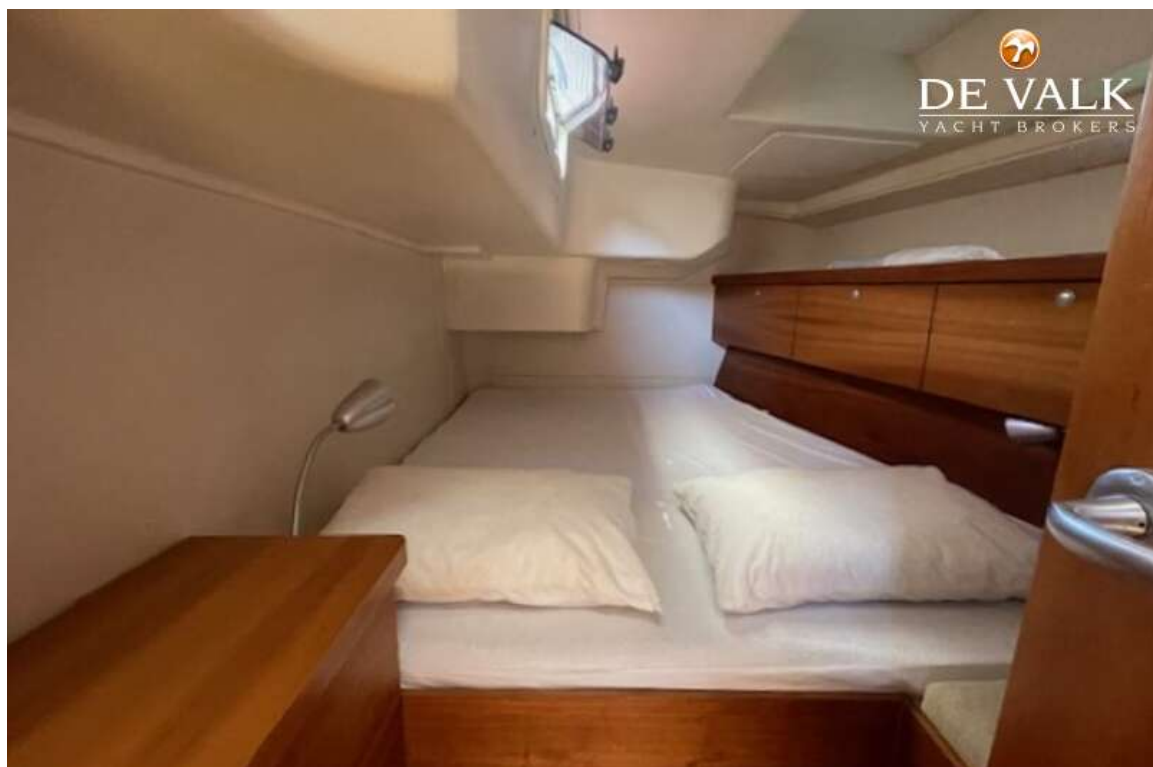
HANSE 470E



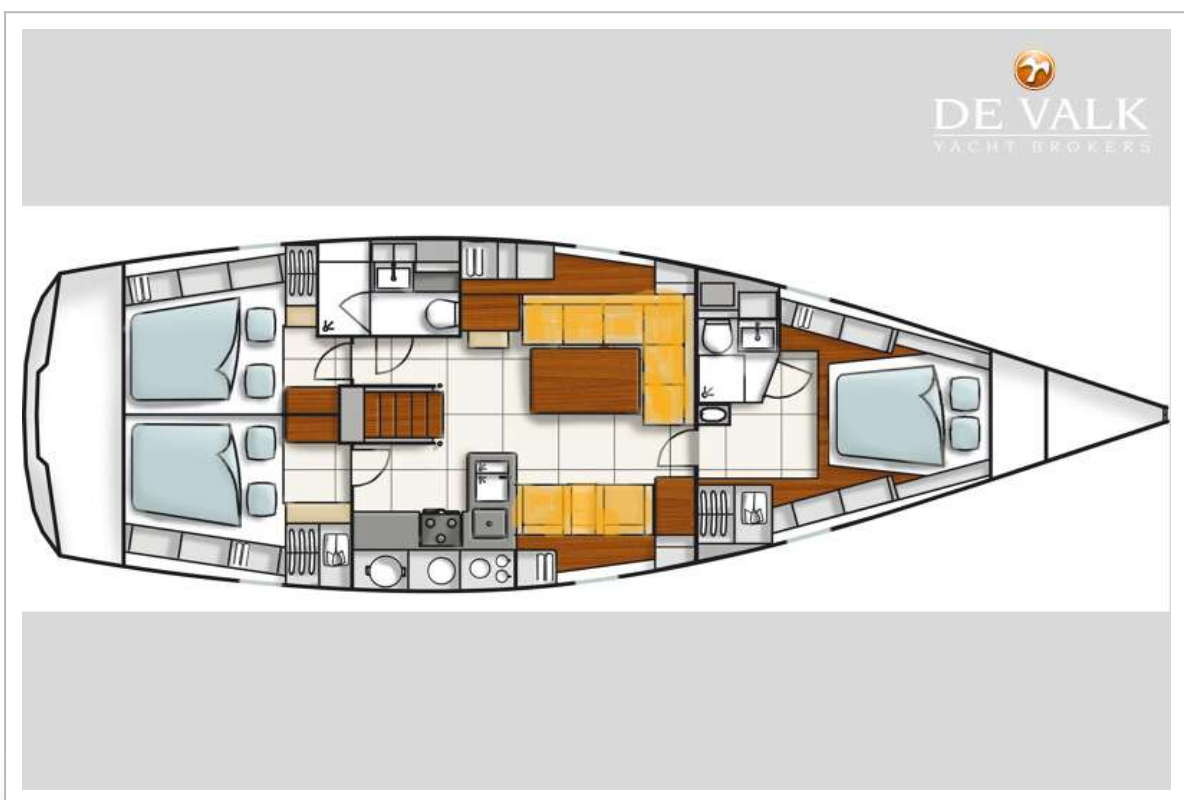
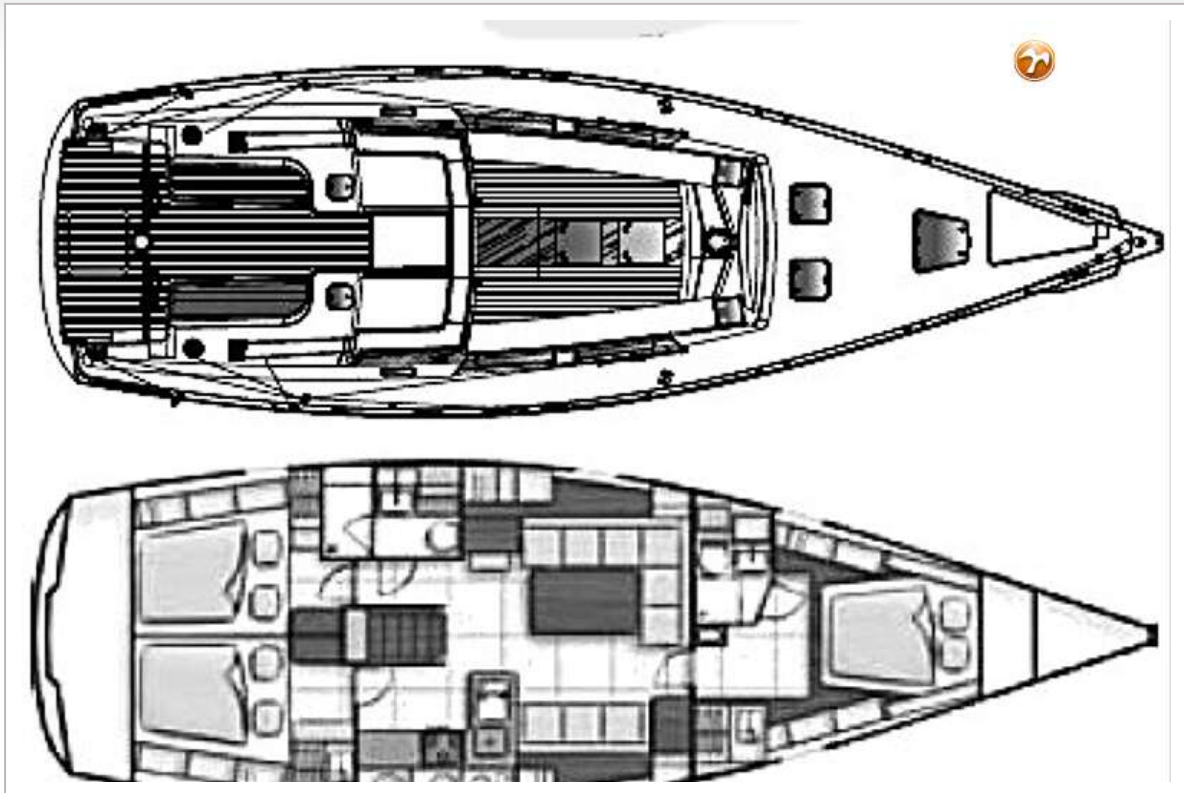
HANSE 470E



HANSE 470E



HANSE 470E



HANSE 470E

