



BAVARIA 41 EXCLUSIVE



BROKER'S COMMENTS

"TOUCH of Southampton" is a Bavaria 41 Exclusive sailing yacht, 6 birth Owners Version, manufactured in winter 1996 and launched in spring 1997. She is a "one-of-a-kind" because her current and sole owners did not want opening windows in the hull as planned but decided instead for additional cupboards in the galley, an extra book shelf and 6 small cupboards in the master cabin, factory fitted. TOUCH is very well equipped and kept in really good condition. Since 1999 TOUCH has been in Spain and currently moored in lovely Addaya Marina in Menorca. Book your viewing!

Oliver Stehula

SPECIFICATIONS

Dimensions	12.70 x 3.96 x 1.73 (m)	Builder	Bavaria Yachts
Built	1996	Cabins	3
Material	GRP	Berths	6
Engine(s)	1 x Volvo Penta MD2040 40 B diesel	Hp/Kw	40.00 (hp), 29.44 (kw)
Asking price	€ 105.000 (VAT Paid)	Lying	contact Palma

CONTACT

Sales office	De Valk Palma	Telephone	+34 971 40 29 11
Address	Port. Cala Nova, Avda. Joan Miro, 327 07015 Palma de Mallorca ES	E-mail	palma@devalk.nl

DISCLAIMER

These particulars are given in good faith as supplied but cannot be guaranteed.



GENERAL

Model	BAVARIA 41 EXCLUSIVE
Type	sailing yacht
LOA (m)	12,70
LWL (m)	10,74
Beam (m)	3,96
Draft (m)	1,73
Headroom (m)	1,95
Year built	1996
Launched	1997
Builder	Bavaria Yachts
Country	Germany
Designer	J&J Design
Displacement (t)	7,9
Ballast (tonnes)	lead 2,8
Hull material	GRP
Hull colour	white
Hull shape	round-bilged
Keel type	bulb keel
Superstructure material	GRP
Deck material	GRP
Deck finish	teak
Cockpit deck finish	teak
Antifouling (year)	2024
Dorades	One
Window frame	aluminium
Window material	polycarbonate
Deckhatch	4 with Cover
Fuel tank (litre)	150
Level indicator (fuel tank)	yes
Freshwater tank (litre)	350



Blackwater tank (litre)	yes
Blackwater tank extraction	pump
Wheel steering	cable steering
Emergency tiller	yes

ACCOMMODATION

Cabins	3
Berths	6
Interior	mahogany
Saloon	yes
Headroom saloon (m)	1,95
Heating	Eberspächer Hot Air
Chart table	yes
Sink	stainless steel Double Sink
Cooker	Three burner
Oven	yes
Fridge	yes
Freezer	Portable, 12/ 24 Volt with transformer
Hot water system	220V + engine
Water pressure system	electrical
Owners cabin	double bed
Bed length (m)	2,00
Bathroom	en suite
Toilet system	manual
Wash basin	in the bathroom
Shower	en suite
Guest cabin 1	double bed
Bed length (m)	2,00
Wardrobe	hanging/drawers/shelves
Bathroom	shared
Toilet	shared



Toilet system	manual
Wash basin	in the bathroom
Shower	shared
Guest cabin 2	double bed
Bed length (m)	2,00
Wardrobe	hanging/drawers/shelves
Bathroom	shared
Toilet	shared
Toilet system	manual
Wash basin	in the bathroom
Shower	shared

MACHINERY

No of engines	1
Make	Volvo Penta MD2040
Type	40 B
HP	40
kW	29.44
Fuel	diesel
Year installed	1997
Maximum speed (kn)	7,96
Engine cooling system	freshwater heat exchanger
Drive	sail-drive
Saildrive seal	yes
Engine controls	bowden cable
Gearbox	mechanical MS 25 S
Propeller type	folding One three bladed folding, bronze One fixed as spare
Propeller blades	yes
Manual bilge pump	yes
Electric bilge pump	yes
Bilge alarm	yes



Generator	silent separator Dolphin
Running hours generator	173
Service battery	3x 135 Ah, new in 2022
Generator battery	1x 75Ah
Battery charger/inverter	Two charger
Shorepower	with cable
Watermaker	Sea- Fresh H2O, 72l/h

NAVIGATION

Compass	Plastimo Olympic 115
Depth sounder	Autohelm St 50
Log	Autohelm St 50
Windset	Raymarine i60
VHF	Shore Line Compact WR
Autopilot	Autohelm St 7000
Radar	yes
GPS	Autohelm St50
Radar/GPS/plotter	Raymarine eS97
EPIRB	ACR Global Fix RLB-35
Personal MOB transmitter	Sea Marshall Personal Beacon
Navigation lights	LOPO Lights, LED

EQUIPMENT

Sprayhood	yes
Bimini	yes
Winter cover	New in 2020
Window cover	yes
Cockpit cushions	yes
Cockpit table	yes
Boarding ladder	yes
Deck shower	On the stern, hot and cold water



Anchor	CQR Plough 22kg
Anchor chain	50m x 10mm
Anchor 2	High Tensile Danforth
Anchor chain	Chain and 100 m rope
Windlass	Lewmar 1000 Watt
Dinghy	inflatable Large Avon in good condition.
Outboard	Yamaha 2 Stroke, 8HP
Outboard support	yes
Deck crane	For outboard engine
Life raft (pers)	NEW! Ocean Safety ISO, 6 person Valise 2025. Value: €3500
Lifejackets	6
Safety harness	4
Safety lines on deck	yes
Window ventilator	yes
Fenders	yes
DVD player	Sony CDX- 51 with 10x Changer
Cockpit speakers	yes
Extra info	One- Spot Water Softener, No Calcium in water system.

RIGGING

Rigging	fractional with backstays
Standing rigging	wire
Brand mast	Seldén
Material mast	aluminium
Spreaders	Two Pairs
Mainsail cover	yes
Battcars	yes
Fully battened mainsail	1x Hydronet like new, 1x Dacron, used
Genoa	One new, Mylar/ Dacron with cover One used
Genoa III	Dacron
Genoa furler	Furlex



Genoa cover	yes
Spinnaker	yes
Removable innerforestay	yes
Stormjib	Dacron
Reefing System	Single- Line- System
Backstay adjuster	tackle
Boomvang	mechanical and tackle
Primary sheet winch	Harken St 40
Secondary sheet winch	Harken St 40
Genoa sheetwinches	Two Harken St 48
Halyard winches	Two Harken St 40
Spi-pole	aluminium



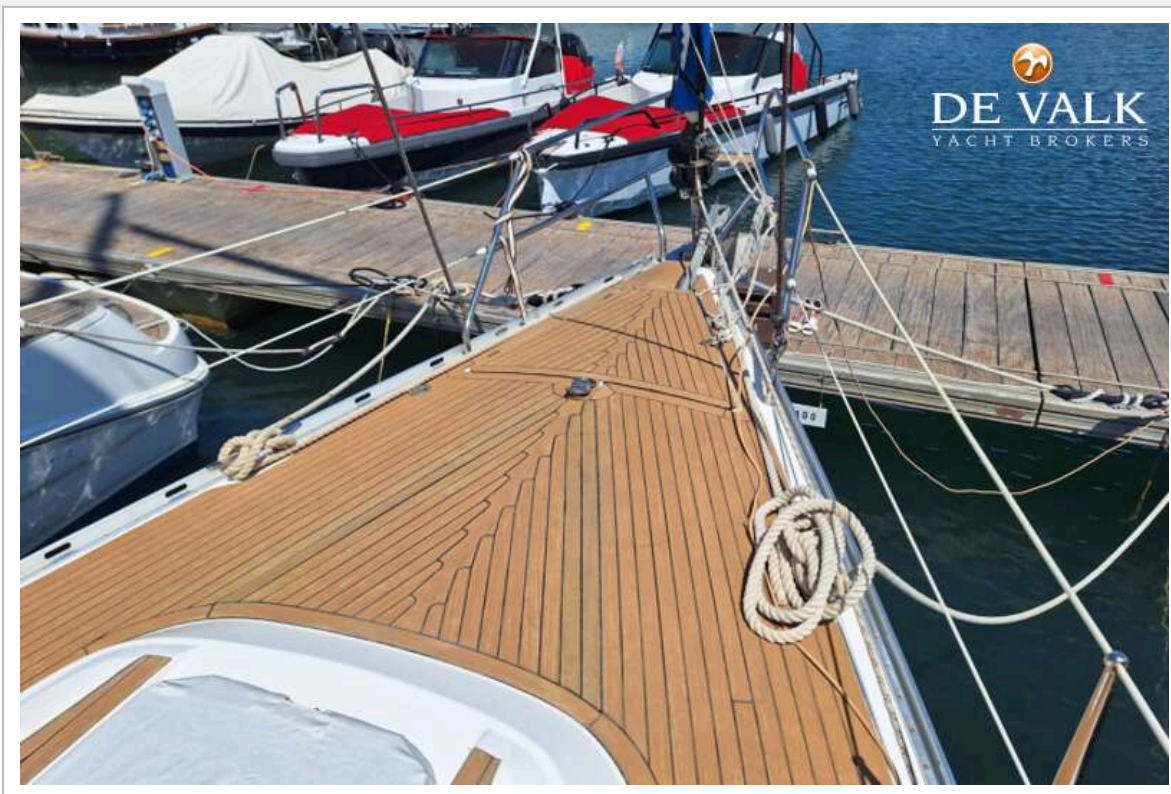
BAVARIA 41 EXCLUSIVE

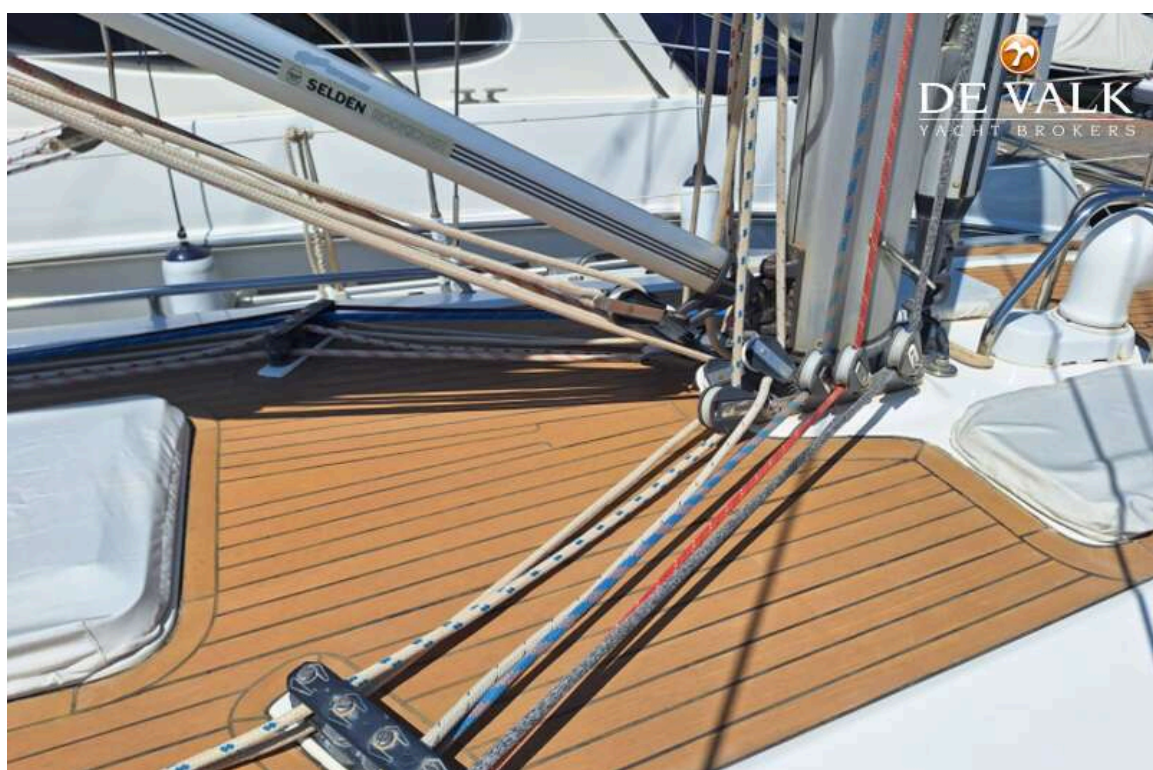


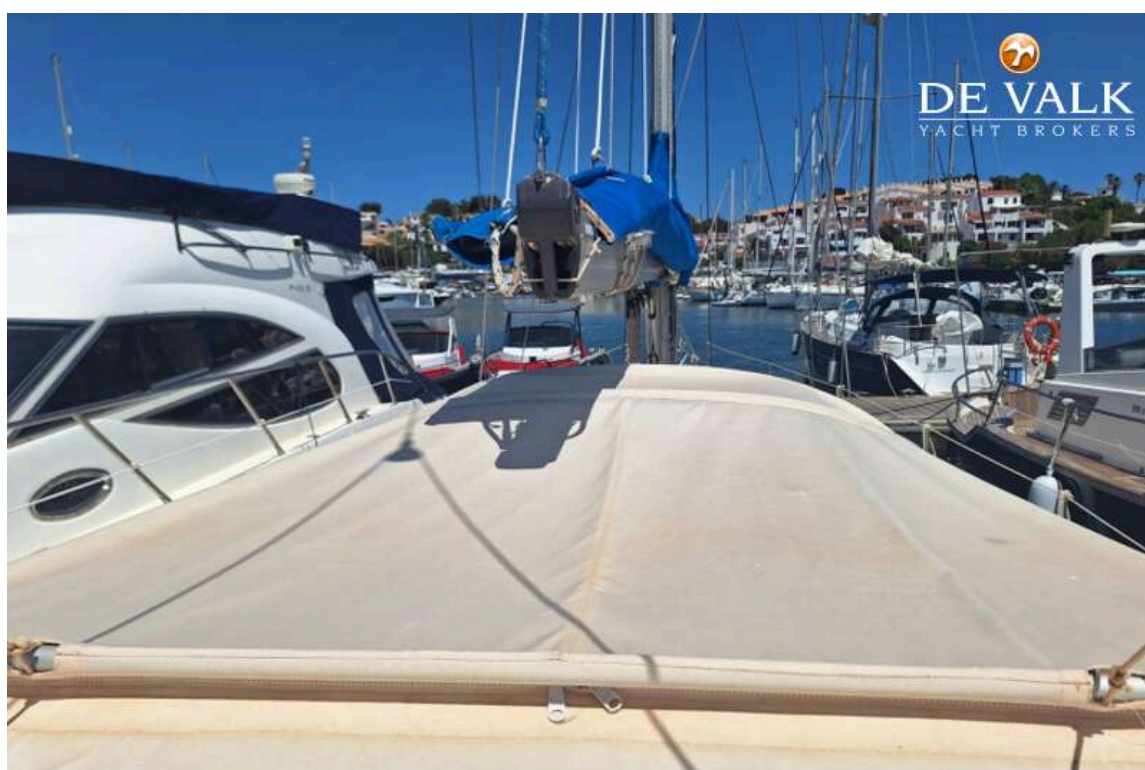
BAVARIA 41 EXCLUSIVE



BAVARIA 41 EXCLUSIVE



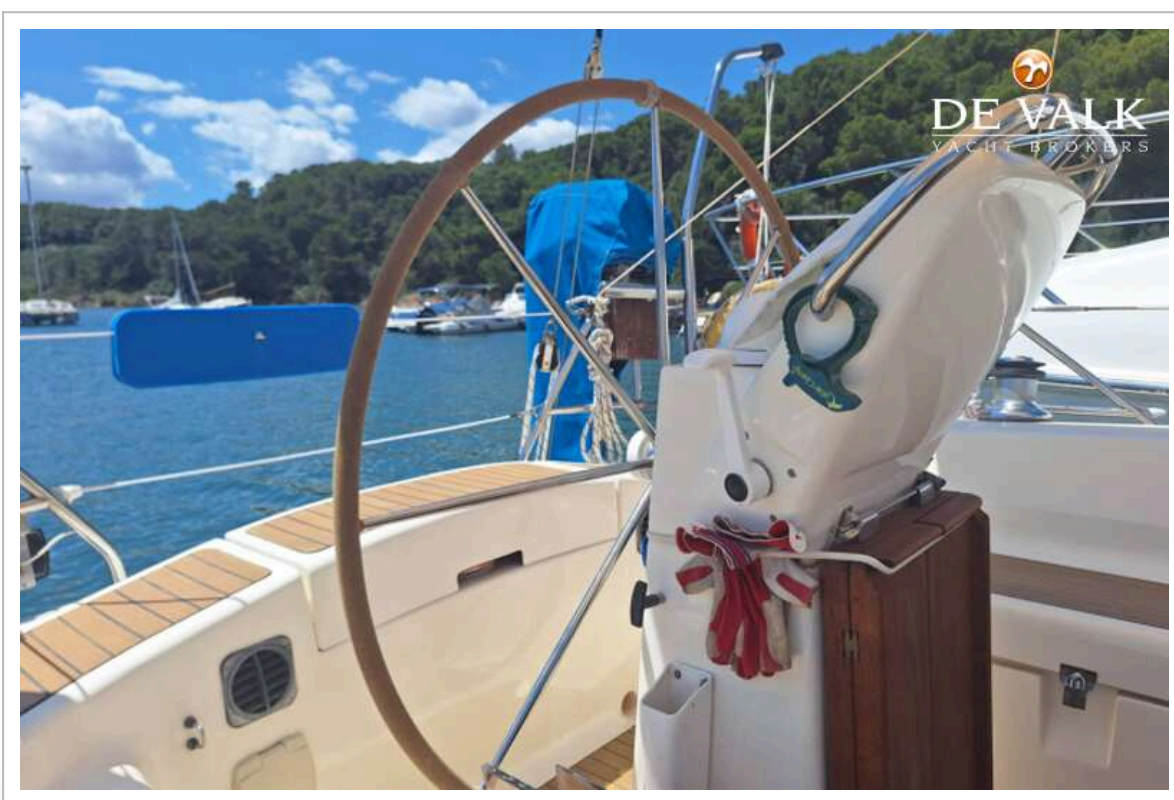
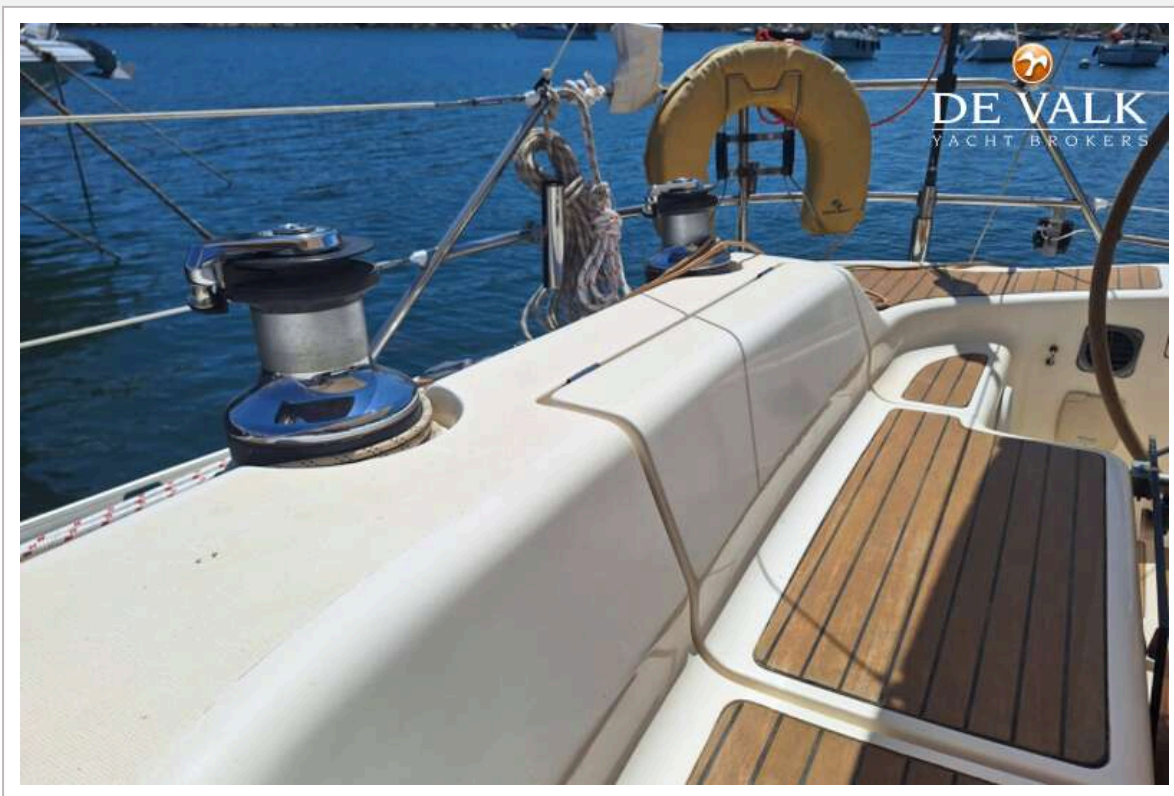


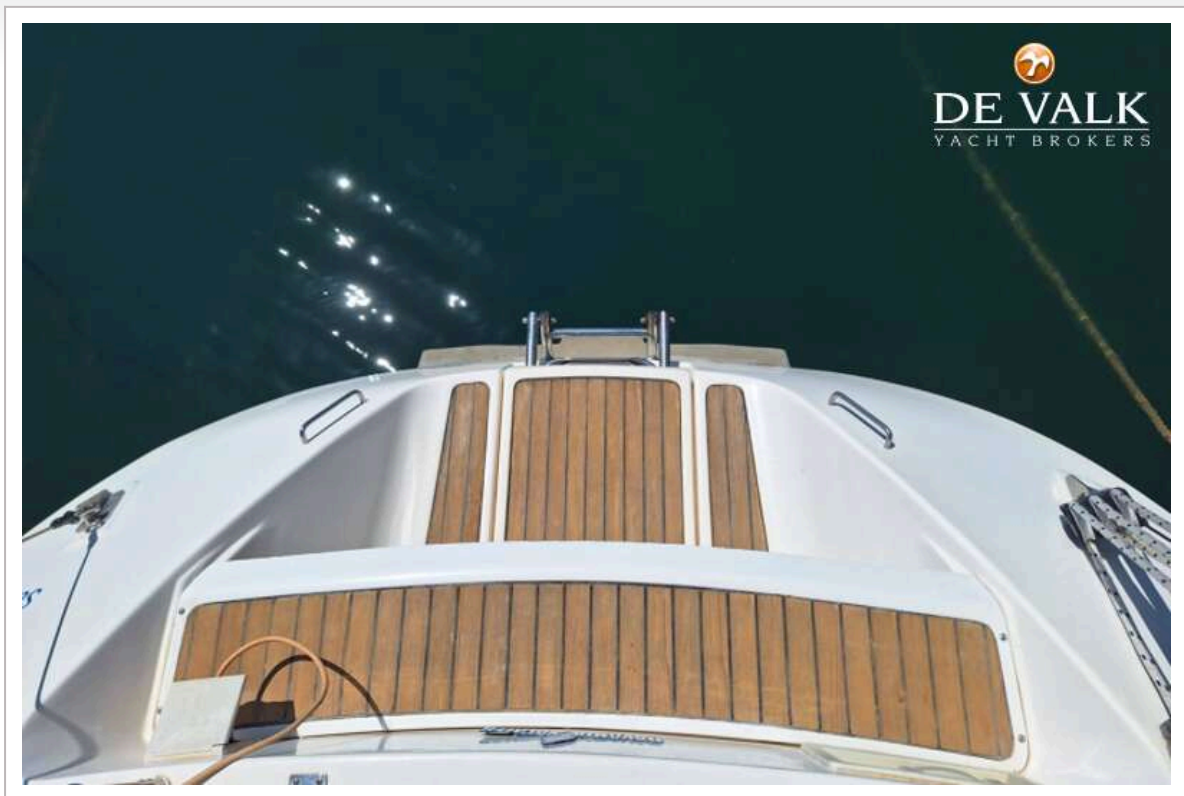


BAVARIA 41 EXCLUSIVE

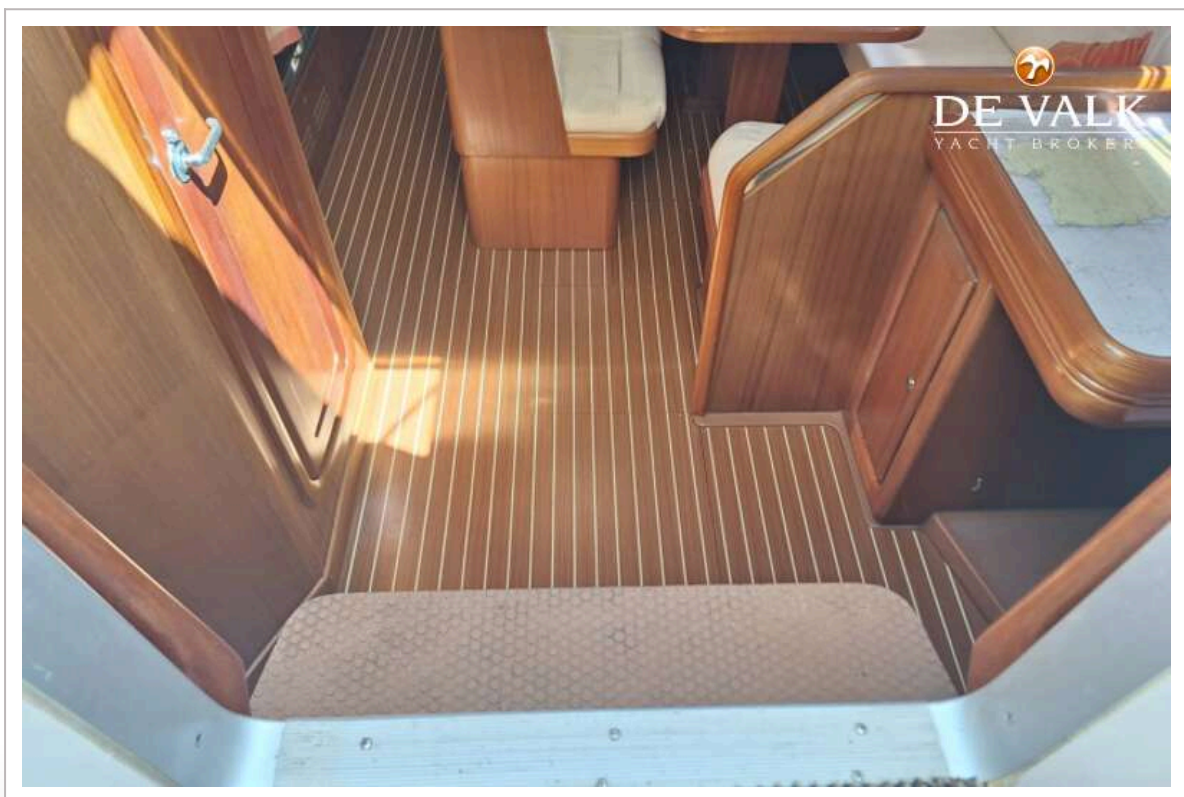








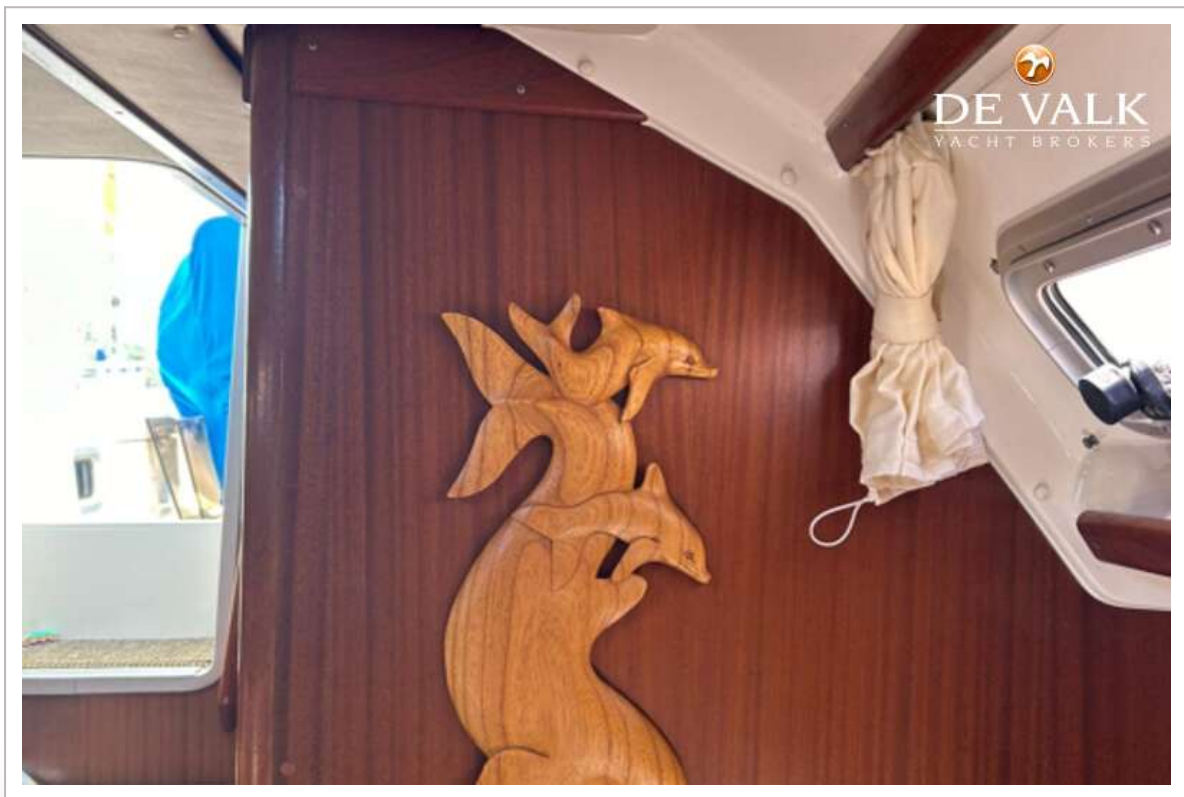
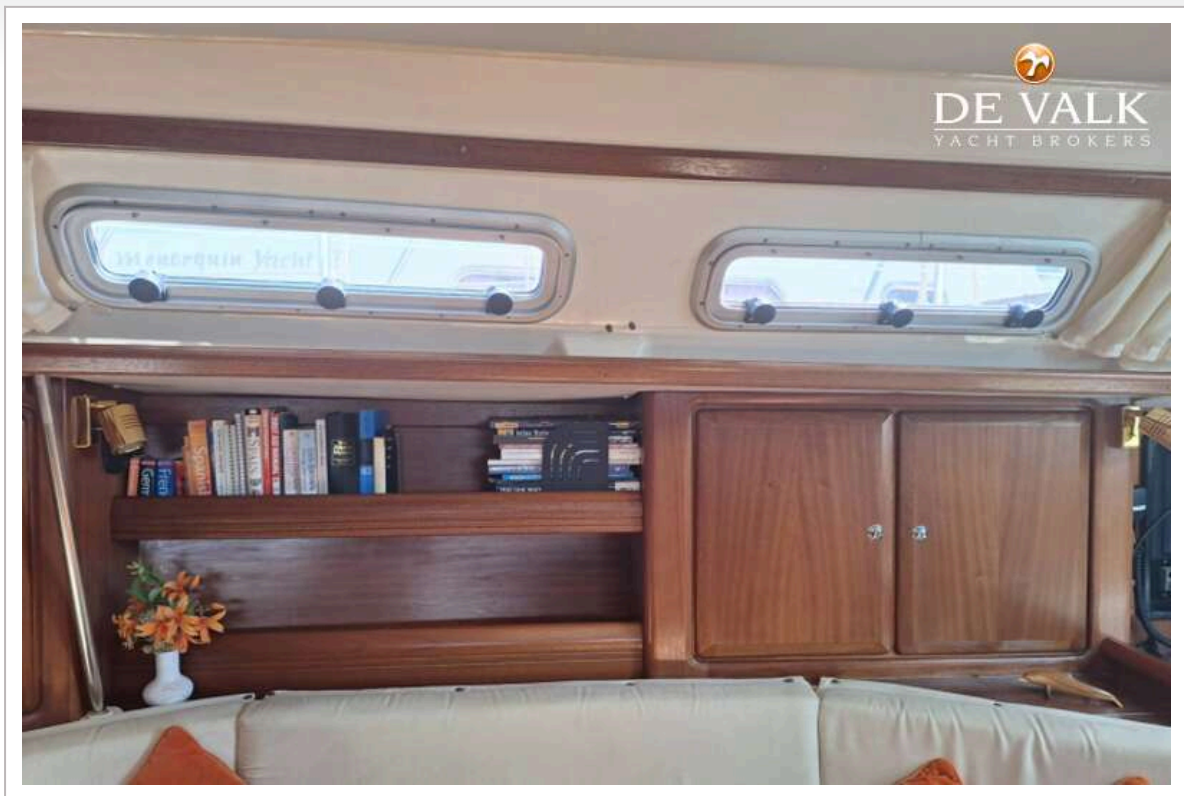
BAVARIA 41 EXCLUSIVE



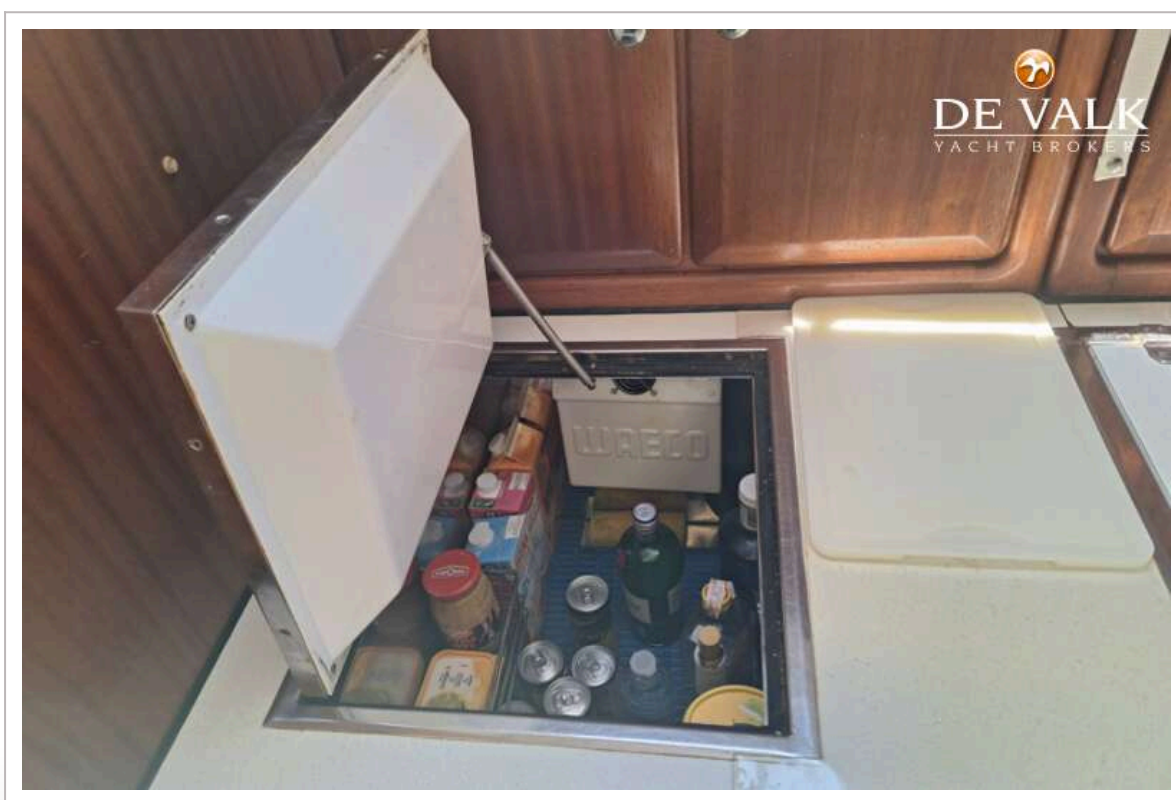
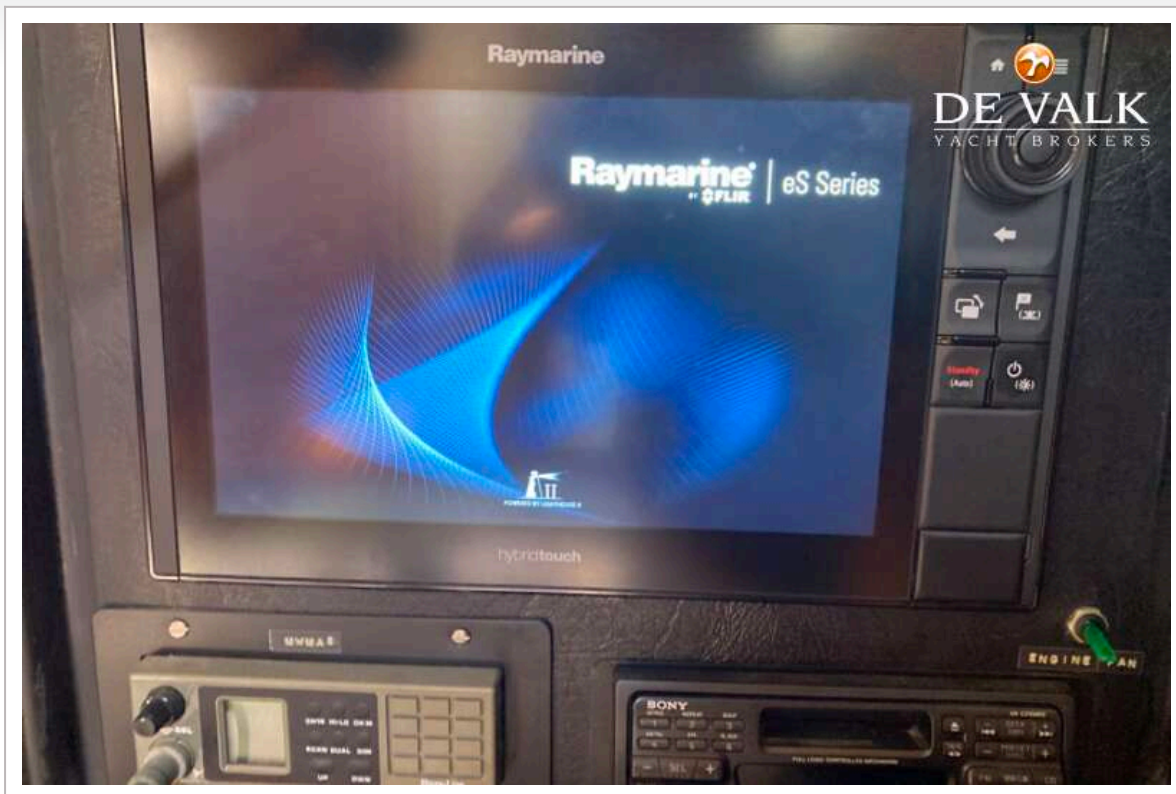
BAVARIA 41 EXCLUSIVE



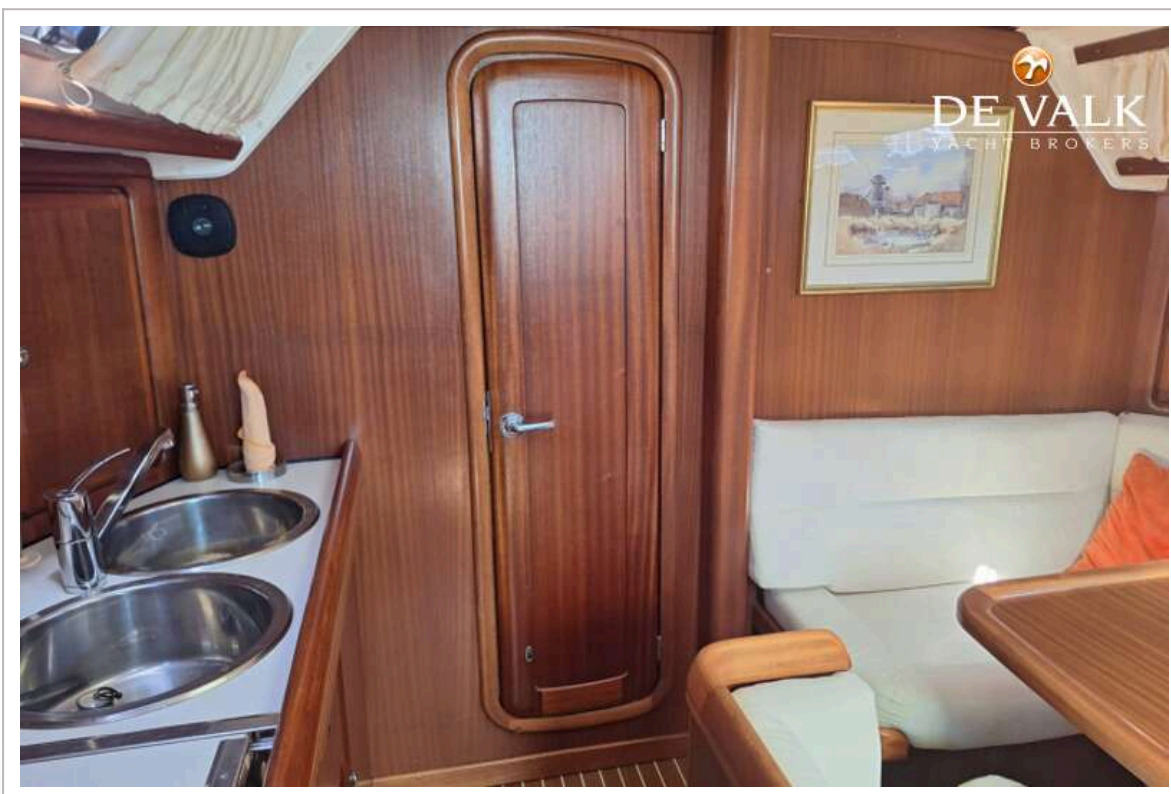
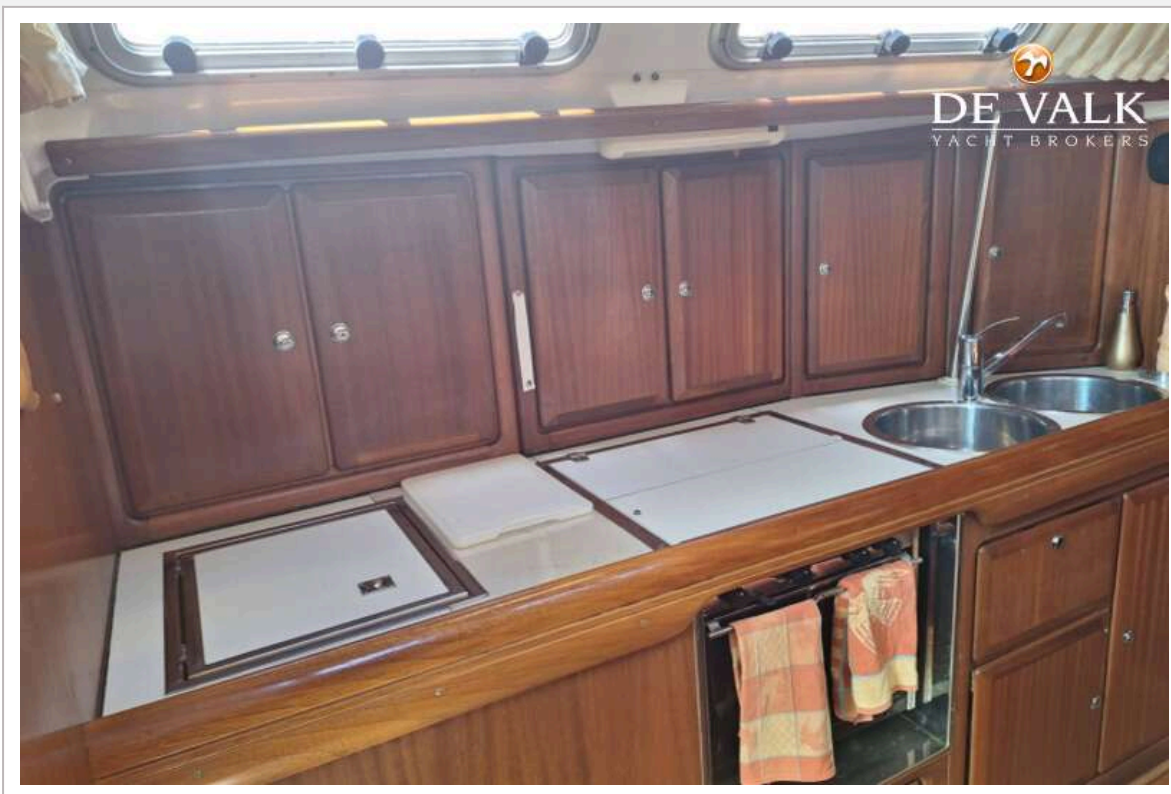
BAVARIA 41 EXCLUSIVE

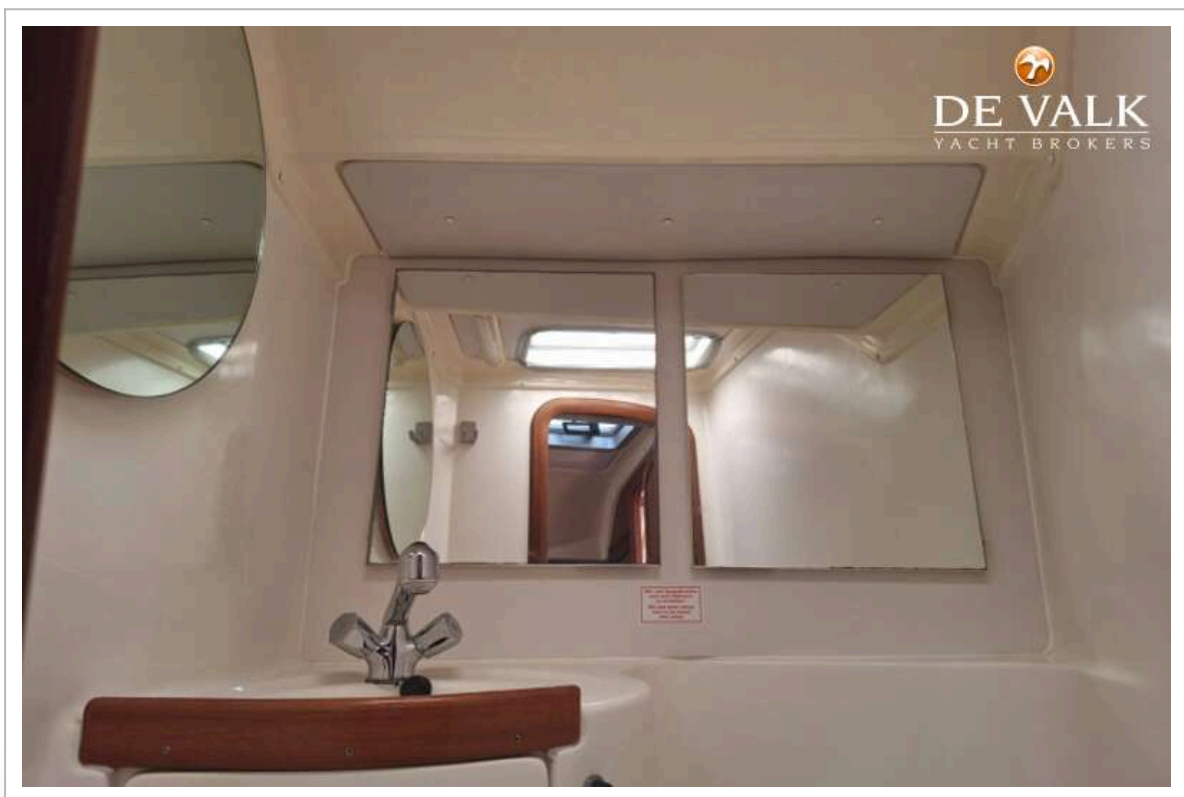
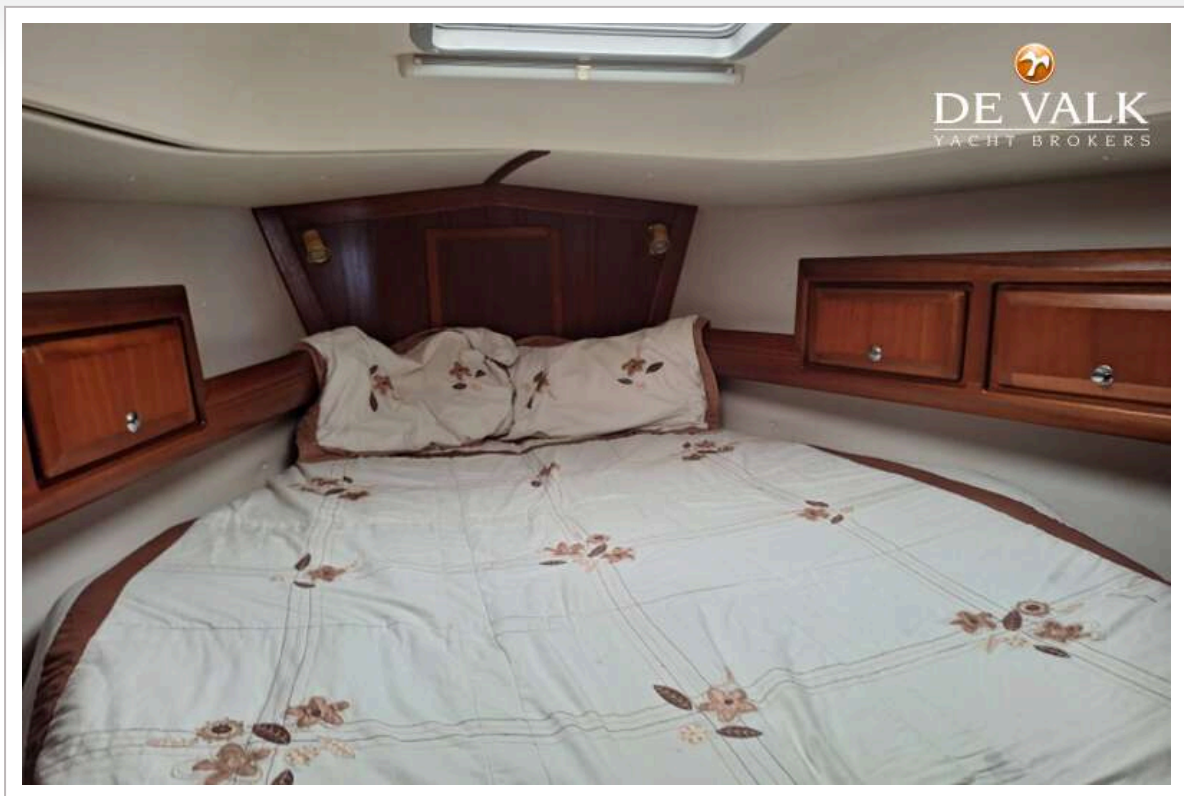


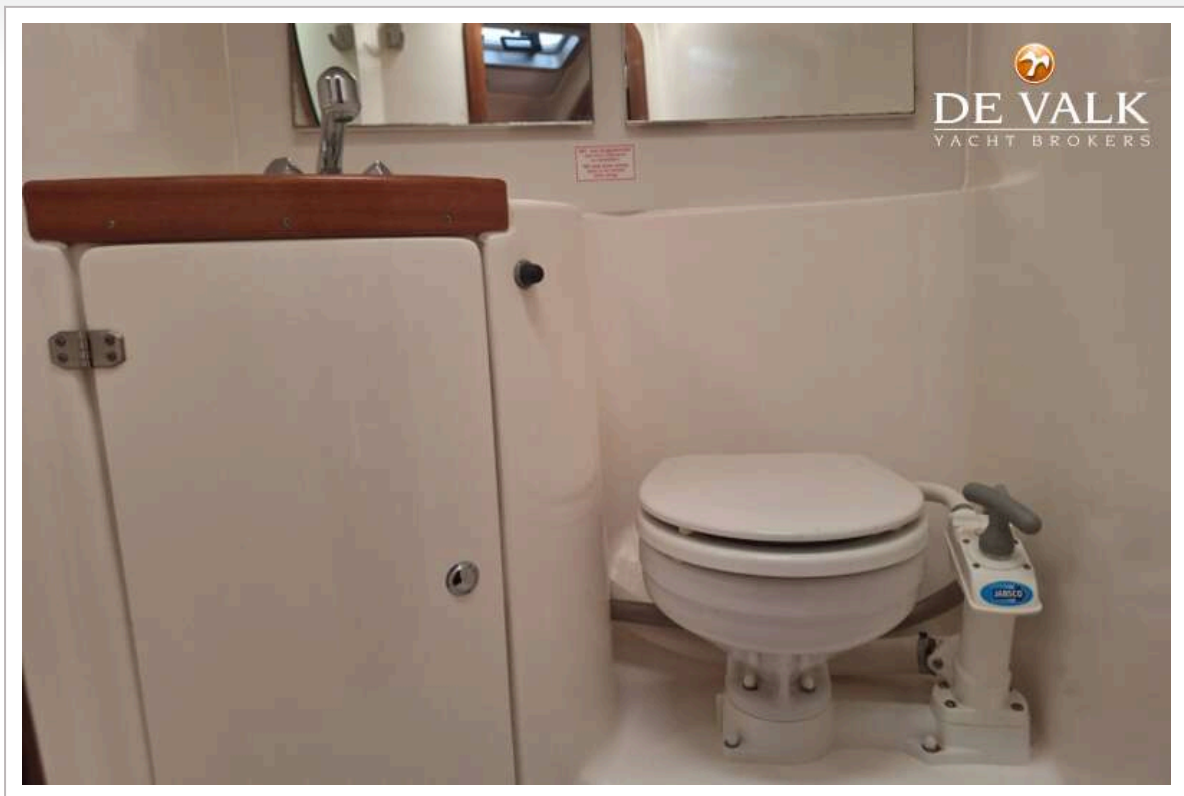


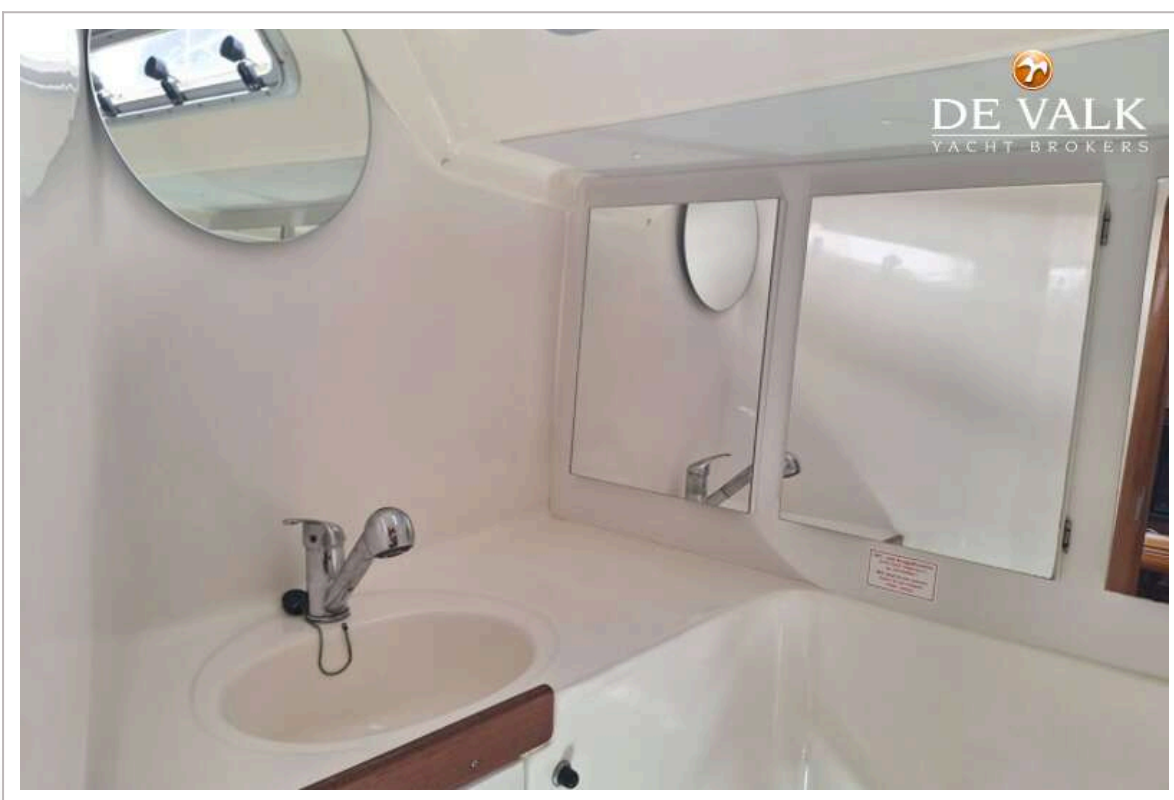


BAVARIA 41 EXCLUSIVE









BAVARIA 41 EXCLUSIVE

