



DE VALK  
YACHT BROKERS



## HALLBERG RASSY 49



DE VALK  
YACHT BROKERS

# HALLBERG RASSY 49

## BROKER'S COMMENTS

This Hallberg-Rassy 49, designed by the legendary Olle Enderlein, embodies the essence of safe and comfortable bluewater cruising. Built with classic Scandinavian craftsmanship, she features a solid fiberglass hull, rich teak interiors, and timeless lines. Equipped with electric furling and electric winches, she offers effortless sail handling, making her ideal for short-handed sailing. Her spacious layout, ample storage, and proven ocean-going performance make her a perfect liveaboard or long-distance cruiser. A rare opportunity to own a true cruising icon, ready for her next adventure.

*Hans Visser*

## SPECIFICATIONS

<b>Dimensions</b>	14.96 x 4.42 x 2.20 (m)	<b>Builder</b>	Hallberg Rassy
<b>Built</b>	1990	<b>Cabins</b>	3
<b>Material</b>	GRP	<b>Berths</b>	9
<b>Engine(s)</b>	1 x Volvo Penta TMD41A diesel	<b>Hp/Kw</b>	143.00 (hp), 105.25 (kw)
<b>Asking price</b>	€ 299.000 (VAT Paid)	<b>Lying</b>	at sales office

## CONTACT

<b>Sales office</b>	De Valk Hindeloopen	<b>Telephone</b>	+31 514 52 40 00
<b>Address</b>	Oosterstrand 1 8713 JS Hindeloopen The Netherlands	<b>E-mail</b>	hindeloopen@devalk.nl

## DISCLAIMER

These particulars are given in good faith as supplied but cannot be guaranteed.



# HALLBERG RASSY 49

## GENERAL

<b>Model</b>	HALLBERG RASSY 49
<b>Type</b>	sailing yacht
<b>LOA (m)</b>	14,96
<b>LWL (m)</b>	12,50
<b>Beam (m)</b>	4,42
<b>Draft (m)</b>	2,20
<b>Air draft (m)</b>	21,45
<b>Headroom (m)</b>	2,00
<b>Year built</b>	1990
<b>Builder</b>	Hallberg Rassy
<b>Country</b>	Sweden
<b>Designer</b>	Olle Enderlein / Christoph Rassy
<b>Displacement (t)</b>	18
<b>Ballast (tonnes)</b>	8,1
<b>Hull material</b>	GRP
<b>Hull colour</b>	white
<b>Hull shape</b>	S-bilged
<b>Keel type</b>	long keel
<b>Superstructure material</b>	GRP
<b>Deck material</b>	GRP
<b>Deck finish</b>	teak
<b>Superstructure deck finish</b>	teak
<b>Cockpit deck finish</b>	teak
<b>Dorades</b>	5x Vetus
<b>Window frame</b>	aluminium
<b>Window material</b>	tempered glass
<b>Deckhatch</b>	6x Gebo
<b>Fuel tank (litre)</b>	stainless steel 765 ltr.
<b>Level indicator (fuel tank)</b>	Wema analogue indicator
<b>Freshwater tank (litre)</b>	GRP 1400 ltr.



# HALLBERG RASSY 49

Level indicator (freshwater)	yes
Wheel steering	mechanical
Outside helm position	mechanical

## ACCOMMODATION

Cabins	3
Berths	9
Interior	teak
Layout	Classic   Warm
Floor	teak and holly
Open cockpit	yes
Aft deck	yes
Saloon	yes
Headroom saloon (m)	1,95 mtr.
Heating	2x webasto HL32 diesel heater + Electric 230 V radiators
Navigation center	yes
Chart table	yes
Galley	yes
Countertop	wood
Sink	stainless steel   Double
Cooker	calor gas Eno   2019   Double burner
Oven	In cooker
Microwave	Electrolux NF4014 230 V
Fridge	Dometic CU55
Freezer	Frigoboat freezer
Hot water system	220V + engine EG Inox boiler
Water pressure system	electrical
Owners cabin	twin single
Bed length (m)	0,85x2,05 mtr. and 1,25x2,05 mtr.
Wardrobe	hanging and shelves
Bathroom	en suite



<b>Toilet</b>	en suite
<b>Toilet system</b>	manual   Jabsco
<b>Wash basin</b>	yes
<b>Shower</b>	yes
<b>Guest cabin 1</b>	v-bed
<b>Bed length (m)</b>	2,00x2,04 mtr.
<b>Wardrobe</b>	hanging and shelves
<b>Guest cabin 2</b>	bunk bed
<b>Bed length (m)</b>	Upper bed: 0,84x2,00 mtr.   Lower bed 0,88x2,00 mtr.
<b>Wardrobe</b>	hanging and shelves
<b>Bathroom</b>	shared
<b>Toilet</b>	shared
<b>Toilet system</b>	manual
<b>Wash basin</b>	in the bathroom
<b>Shower</b>	shared
<b>Washing machine</b>	Kenny Compact washingmachine

## MACHINERY

<b>No of engines</b>	1
<b>Make</b>	Volvo Penta
<b>Type</b>	TMD41A
<b>HP</b>	143
<b>kW</b>	105.25
<b>Fuel</b>	diesel
<b>Year installed</b>	1991
<b>Year of overhaul</b>	2018
<b>Maximum speed (kn)</b>	9
<b>Cruising speed (kn)</b>	7,5
<b>Consumption (l/hr)</b>	10
<b>Engine cooling system</b>	seawater
<b>Drive</b>	shaft



# HALLBERG RASSY 49

Shaft seal	yes
Engine controls	bowden cable
Gearbox	mechanical
Bowthruster	electric   Sleipner 7 hp
Propeller type	fixed   blades
Manual bilge pump	yes
Electric bilge pump	yes
Electrical installation	12-24-230 V
Generator	wet exhaust Westerbeke 8 kW
Batteries	6
Start battery	Powernax heavy duty 110 Ah 12V
Service battery	4x Wilson 120Ah 12V needs service   1x unknown needs service
Battery monitor	Odelco DCC 2000
Battery charger	Victron Centaur 24v 60Ah   victron chargemaster 12 25-3
Shorepower	with cable

## NAVIGATION

Compass	yes
Depth sounder	B&G
Log	B&G
Windset	B&G
VHF	Icom IC-M423G
Autopilot	B&G Hydro Pilot needs service
Radar	New 2018   B&G
GPS	Furuno GP32 GPS
Plotter	B&G 12" Zeus Touch
Navtex	ISC NAV6
AIS transceiver	yes
Navigation lights	yes
Extra info	New 2019   Iridium GO satellite receiver
Extra info	Raytheon Ray 430 loud hailer/ listener/ fog horn



## EQUIPMENT

Fixed windscreen	yes
Cockpit table	yes
Bathing platform	Custom made stainless steel and teak
Boarding ladder	yes
Deck shower	yes
Anchor	34 kg Rocna
Anchor chain	80 mtr calibrated chain
Anchor 2	Spare Aluminium 34 kg CQR
Windlass	electrical Lofrans Albatross 1500 W
Deck wash	yes
Dinghy	Avon 2.8 mtr.
Outboard	New 2022   Mariner 4hp
Davits	yes
Sea railing	wire
Pushpit	yes
Pulpit	yes
Lifebuoy	yes
Radar reflector	yes
Fenders	yes
Mooring lines	yes
Radio	Sony
Cockpit speakers	2x Sony xplod
Speakers in salon	2x Sony xplod
Fire extinguisher	yes

## RIGGING

Rigging	sloop
Standing rigging	wire
Brand mast	Seldén
Material mast	aluminium



<b>Spreaders</b>	3 sets
<b>Mainsail</b>	De vries maritiem lemmer
<b>Stoway mast</b>	Seldén electric
<b>Cutterstay</b>	yes
<b>Jib</b>	Ullman sails
<b>Genoa</b>	De vries maritiem lemmer
<b>Genoa furler</b>	Furlex 400e Electric
<b>Cutter furler</b>	Furlex
<b>Gennaker</b>	yes
<b>Spinnaker</b>	yes
<b>Reefing System</b>	main in-mast furling
<b>Backstay adjuster</b>	hydraulic   Navtec
<b>Primary sheet winch</b>	2x Lewmar 43 self tailing
<b>Secondary sheet winch</b>	Lewmar 46 self tailing
<b>Genoa sheetwinches</b>	2x Lewmar 64 self tailing electric
<b>Halyard winches</b>	2x Lewmar 43 self tailing
<b>Multifunctional winches</b>	Lewmar 8 Pole hoist winch   Lewmar ocean electric 40
<b>Spi-pole</b>	aluminium

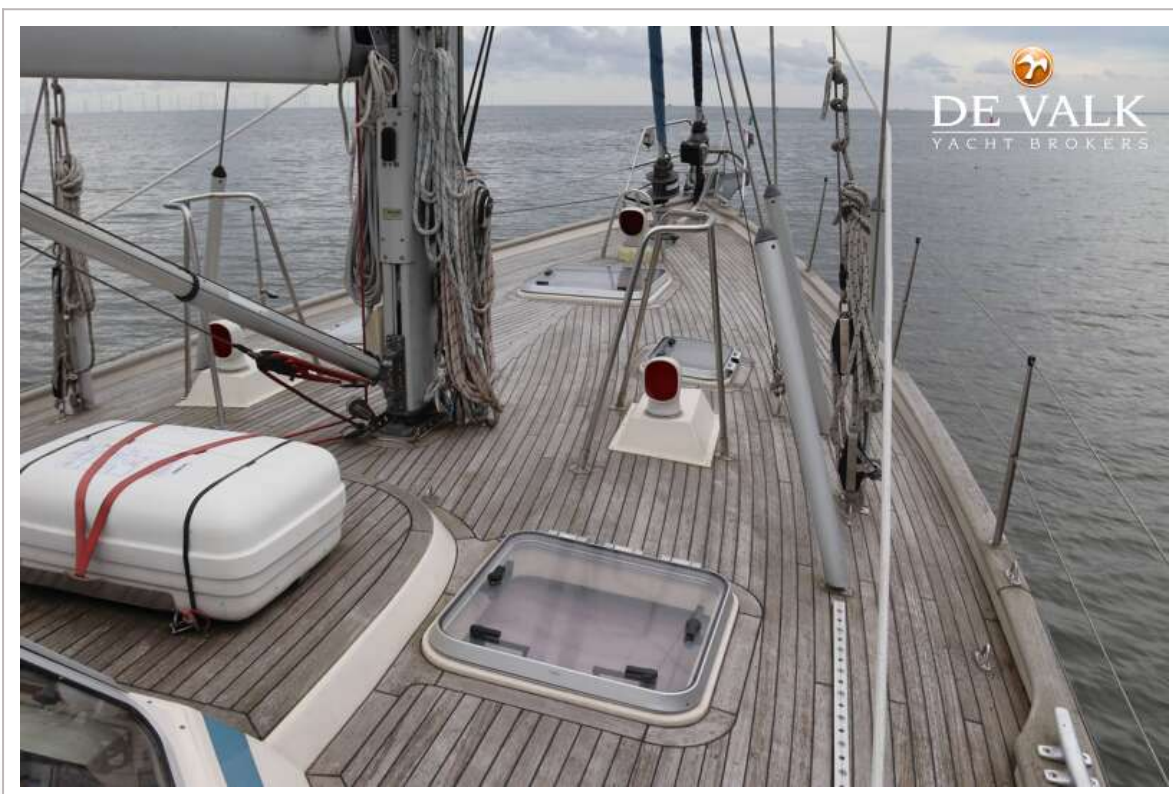




# HALBERG RASSY 49



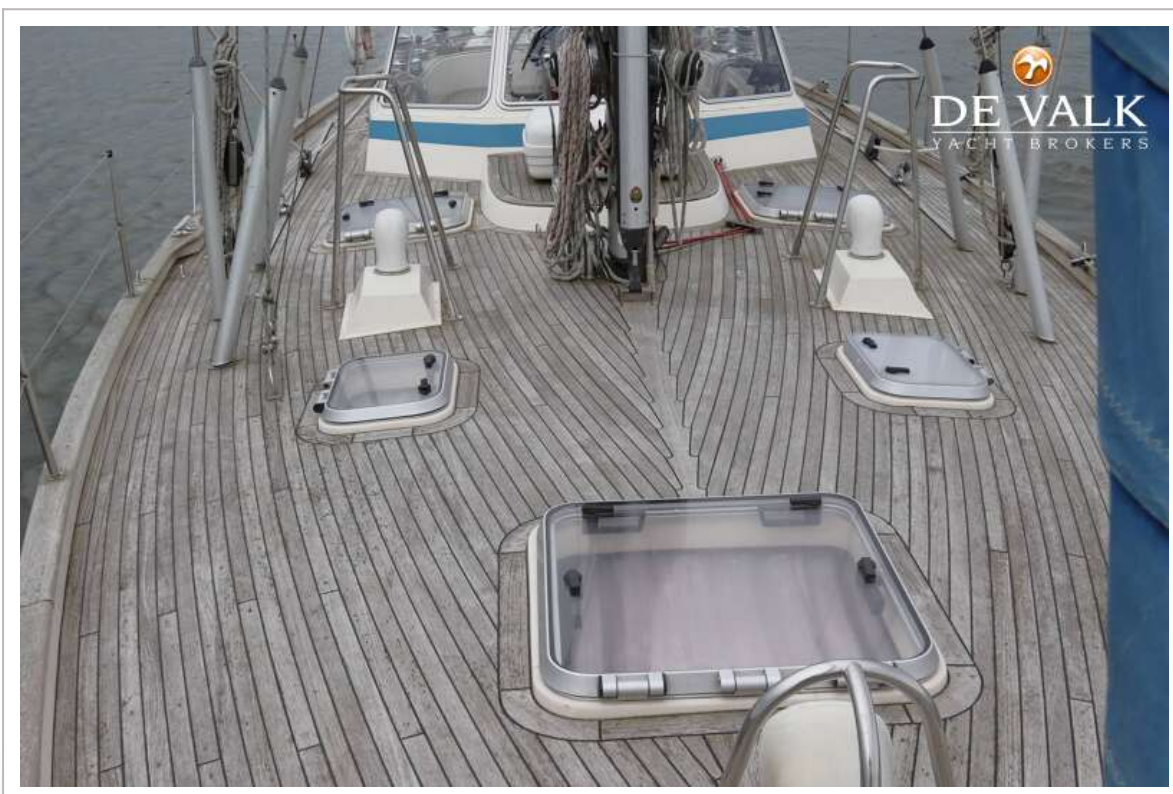
# HALBERG RASSY 49



# HALLBERG RASSY 49



# HALBERG RASSY 49



# HALBERG RASSY 49



# HALBERG RASSY 49



# HALBERG RASSY 49



# HALBERG RASSY 49





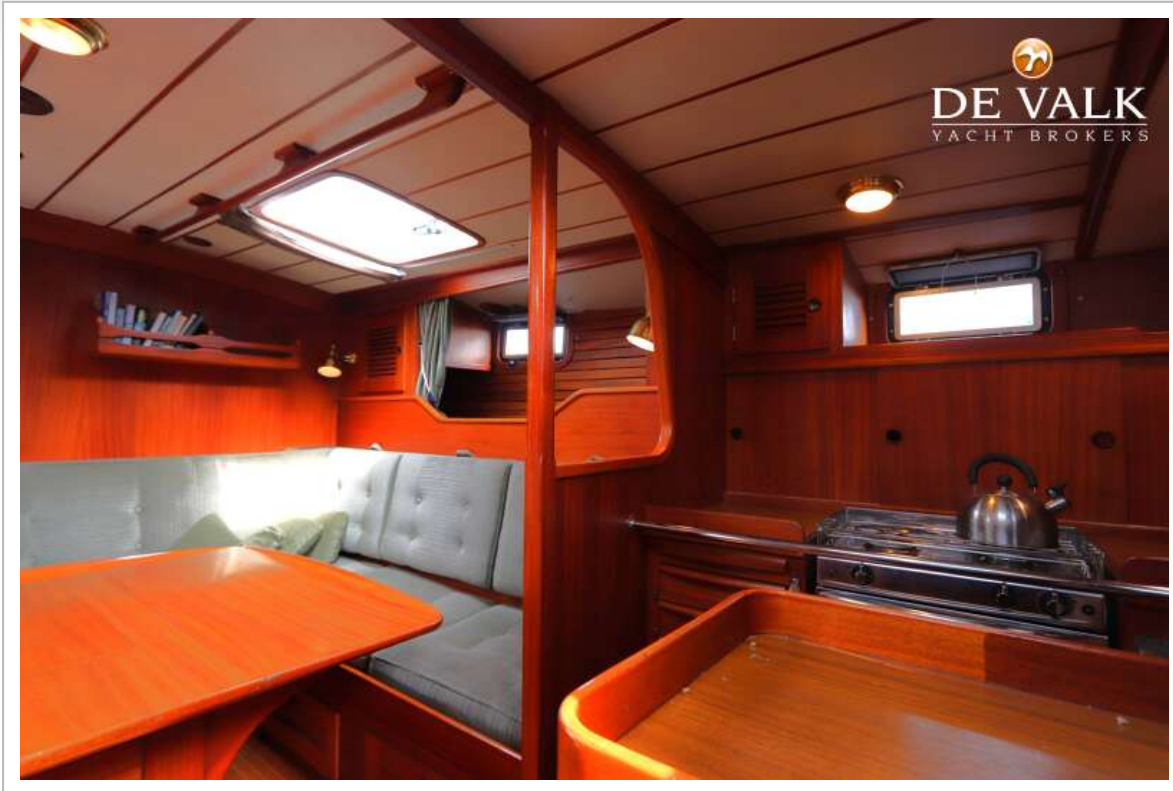
# HALLBERG RASSY 49



# HALLBERG RASSY 49



# HALLBERG RASSY 49



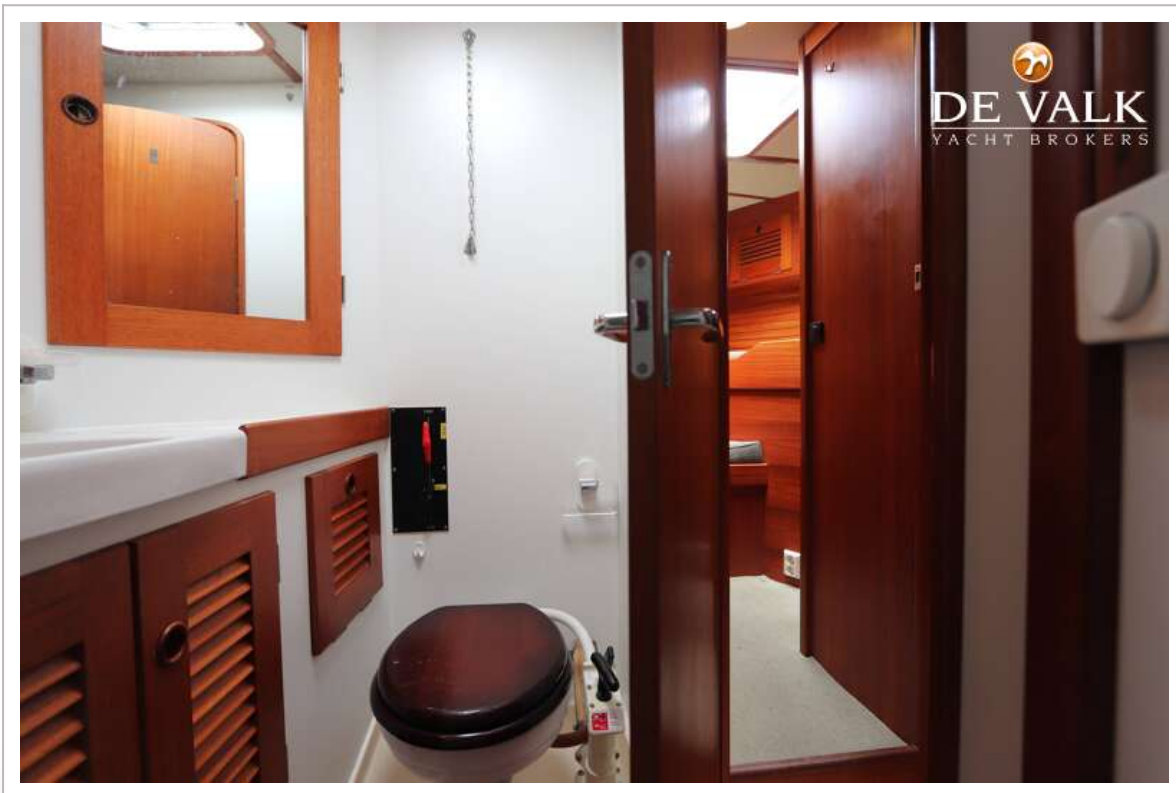
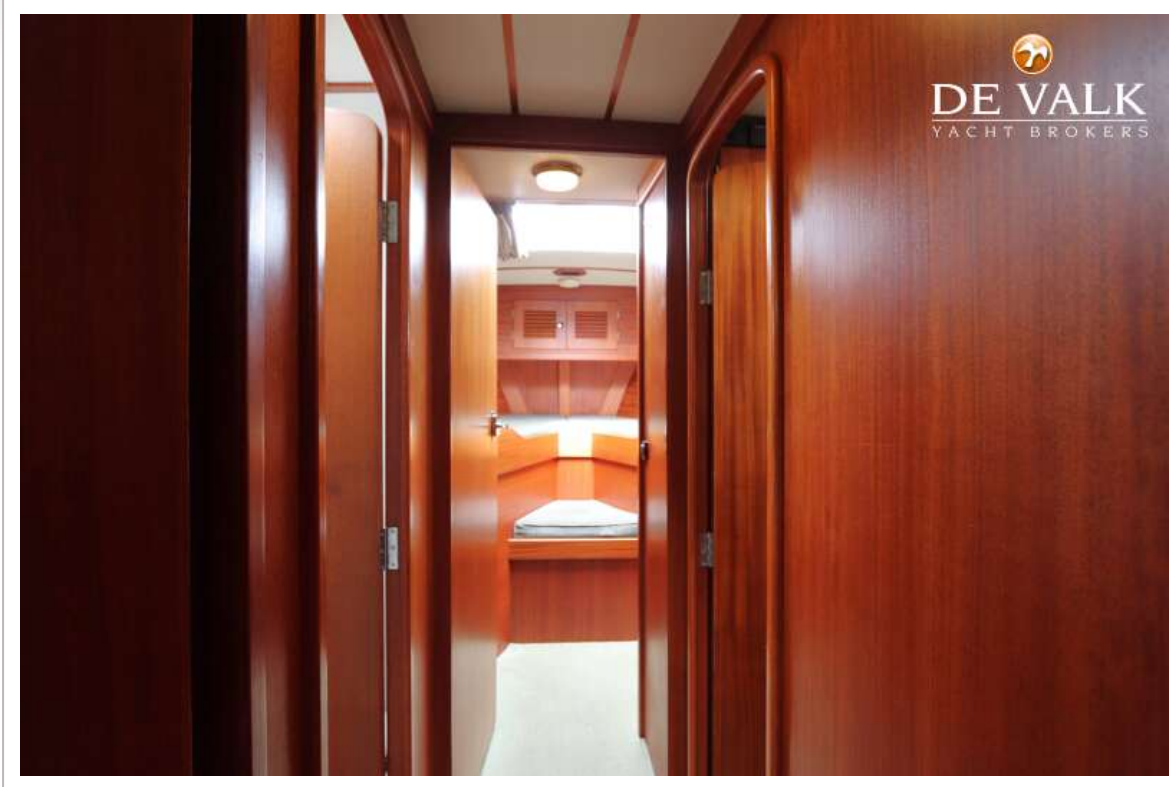
# HALLBERG RASSY 49



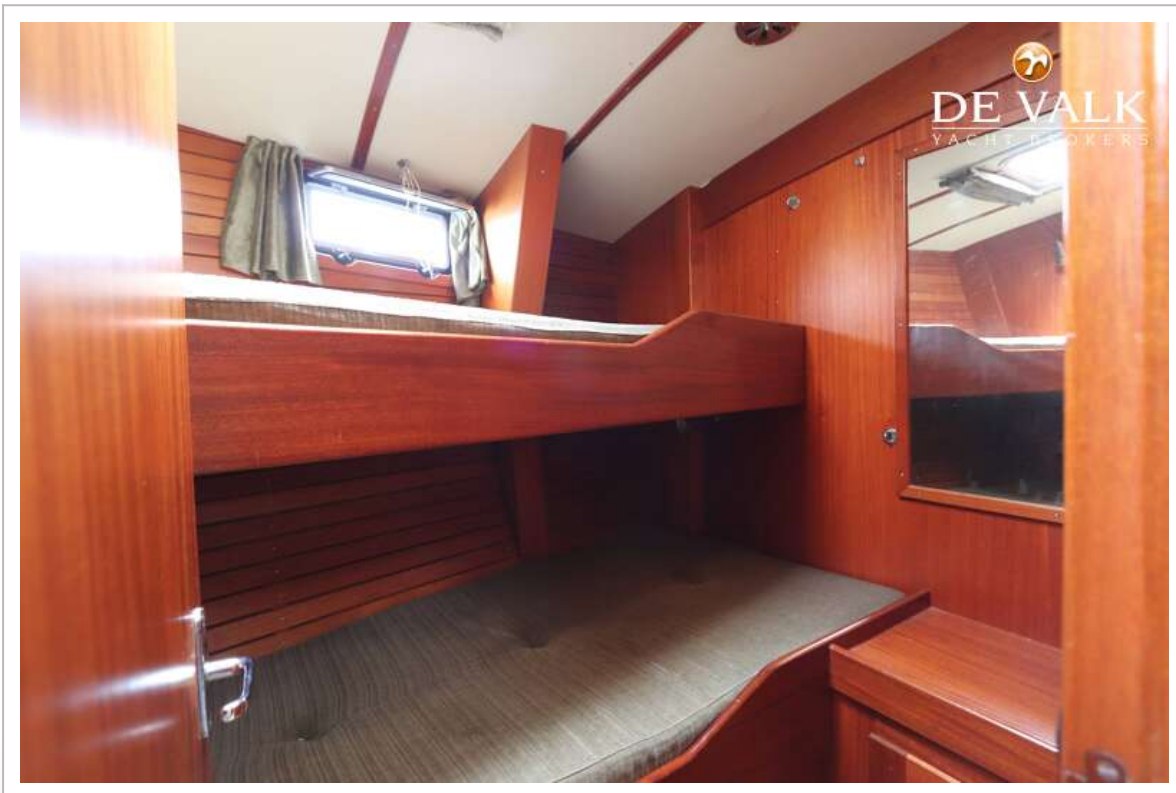
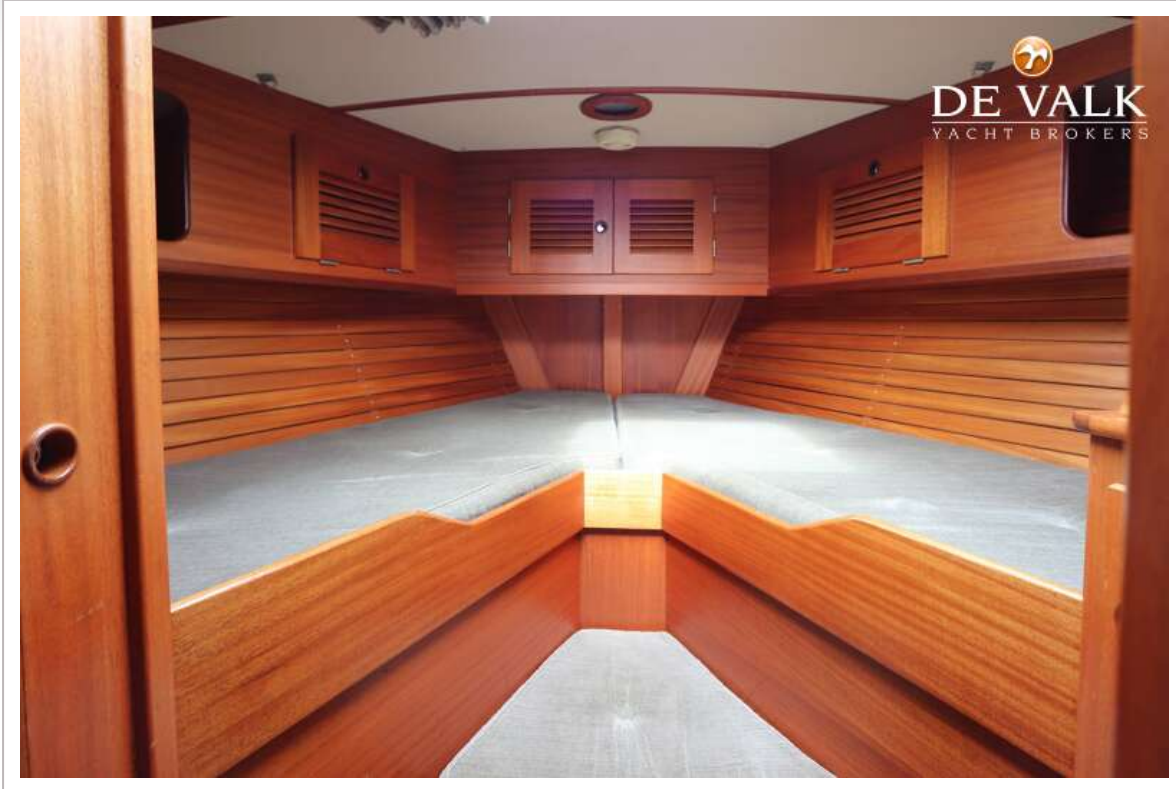
# HALLBERG RASSY 49



# HALLBERG RASSY 49



# HALLBERG RASSY 49



# HALLBERG RASSY 49

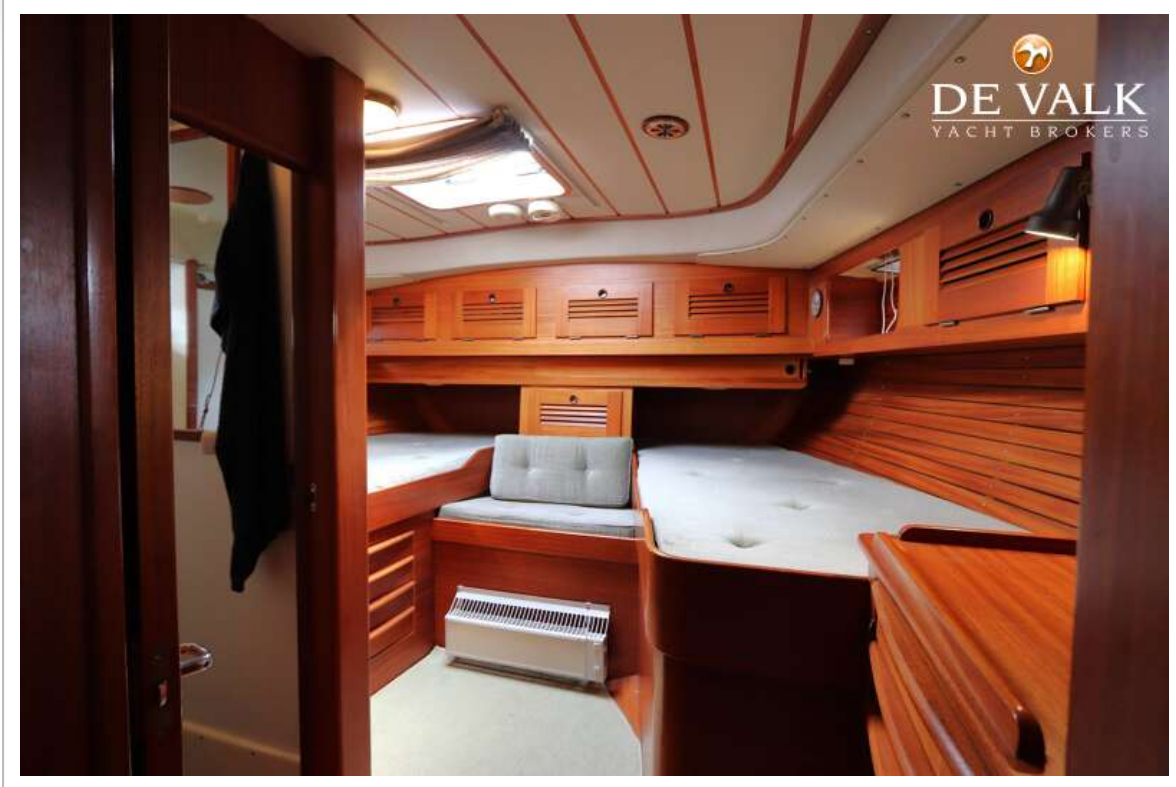




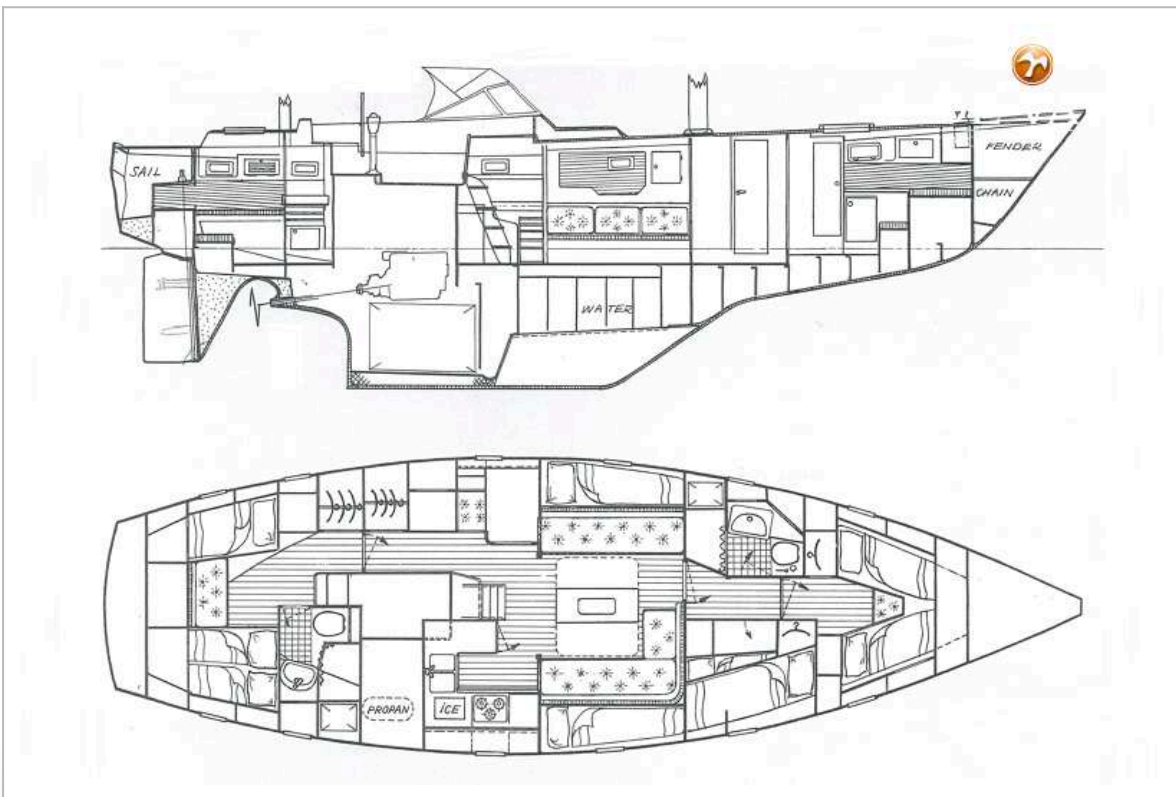
# HALLBERG RASSY 49



# HALLBERG RASSY 49



# HALLBERG RASSY 49



# HALBERG RASSY 49

