



DE VALK
YACHT BROKERS



LINSSEN 320 AC



DE VALK
YACHT BROKERS

BROKERAGE | CHARTER | BERTHS | FINANCE | INSURANCE | YACHT MANAGEMENT

LINSSEN 320 AC

BROKER'S COMMENTS

The Linssen Dutch Sturdy 320 is a motor yacht with excellent sailing characteristics. The Linssen chine hull shape provides excellent stability, the bow and stern thruster make sailing and mooring very easy. The double steering position allows for long sailing. The salon offers 2 single spacious beds, the round seat at the front can easily be converted into a double bed with lots of privacy. The summer hood is visible in the photos, there is also a complete tent with the boat. The boat is very well cared for. The Linssen Dutch Sturdy 320 is a versatile yacht that is ideal for touring.

Jeanne Stukstette

SPECIFICATIONS

Dimensions	10.10 x 3.45 x 1.00 (m)	Builder	Linssen Yachts
Built	2002	Cabins	1
Material	Steel	Berths	4
Engine(s)	1 x Volvo Penta TAMD-31M diesel	Hp/Kw	110.00 (hp), 80.96 (kw)
Asking price	sold (VAT)	Lying	

CONTACT

Sales office	De Valk Limburg	Telephone	+31 630372559
Address	Schippersveld 3 6019 DE Wessem NL	E-mail	limburg@devalk.nl

DISCLAIMER

These particulars are given in good faith as supplied but cannot be guaranteed.



GENERAL

Model	LINSSEN 320 AC
Type	motor yacht
LOA (m)	10,10
Beam (m)	3,45
Draft (m)	1,00
Air draft (m)	4,90
Air draft min (m)	2,25
Headroom (m)	1,95
Year built	2002
Builder	Linssen Yachts
Country	The Netherlands
Net tonnage	12 t
CE norm	C
Hull material	steel
Hull colour	black
Hull shape	multi hard chine
Keel type	long keel
Superstructure material	steel
Rubbing strake	fender rope
Deck material	steel
Deck finish	teak
Superstructure deck finish	non-skid paint
Cockpit deck finish	paint
Antifouling (year)	2024
Dorades	8
Window frame	aluminium
Window material	double glazing Salon
Deckhatch	4
Insulation	rockwool
Mast can be lowered	manual



Fuel tank (litre)	steel 420 L
Level indicator (fuel tank)	yes
Freshwater tank (litre)	polyethylene 2x 220L
Level indicator (freshwater)	yes
Blackwater tank (litre)	1x 70L
Level indicator (blackwater)	Tankwatch 3
Wheel steering	hydraulic
Inside helm position	yes
Outside helm position	yes
More info on paintwork	2012 Completely painted by Linssen yachts
Extra info	4.9 m. 490cm (all up) / 330cm (without mast) / 225cm creep height

ACCOMMODATION

Cabins	1
Berths	4
Interior	cherry
Headroom saloon (m)	1.95
Heating	diesel ducted hot air Eberspächer
Dining room	yes
Dinette to convert into berth	2 persons 2
Opening door to aft deck	yes
Countertop	wood
Sink	stainless steel
Cooker	calor gas 3-pits
Fridge	yes
Hot water system	220V + engine Isotherm
Water pressure system	yes
Owners cabin	twin single
Bed length (m)	2.0x1.0
Wardrobe	yes



Bathroom	separate
Toilet	separate
Toilet system	electric
Wash basin	in the bathroom
Shower	separate

MACHINERY

No of engines	1
Make	Volvo Penta
Type	TAMD-31M
HP	110
kW	80.96
Fuel	diesel
Engine hours	1691.4
Engine cooling system	seawater
Engine controls	bowden cable
Bowthruster	electric
Sternthruster	electric
Propeller blades	yes
Shaft lubrication	water
Electric bilge pump	yes
Bilge alarm	yes
Start battery	yes
Service battery	yes
Bowthruster battery	yes
Sternthruster battery	yes
Battery charger	yes
Battery charger/inverter	MASTERVOLT 12/1200
Shorepower	with cable

NAVIGATION



Compass	Raytheon ST60
Depth sounder	Raytheon ST60 Tridata + Raytheon ST80 Masterview
Depth sounder/log	yes
Log	Raytheon ST60 Tridata + Raytheon ST80 Masterview
Windset	yes
VHF	yes
VHF handheld	yes
Rudder angle indicator	Raytheon ST60
Radar/GPS	yes
Navigation lights	yes
Searchlight	yes

EQUIPMENT

Fixed windscreen	yes
Storm blinds	yes
Sprayhood	yes
Bimini	yes
Winter cover	yes
Cockpit table	yes
Cockpit chairs	yes
Bathing platform	yes
Boarding ladder	stainless steel
Deck shower	yes
Anchor	Vetus Mechanisch
Anchor chain	yes
Windlass	yes
Davits	stainless steel
Davits controls	manual
Wiper	yes
Horn	yes
Fenders	yes



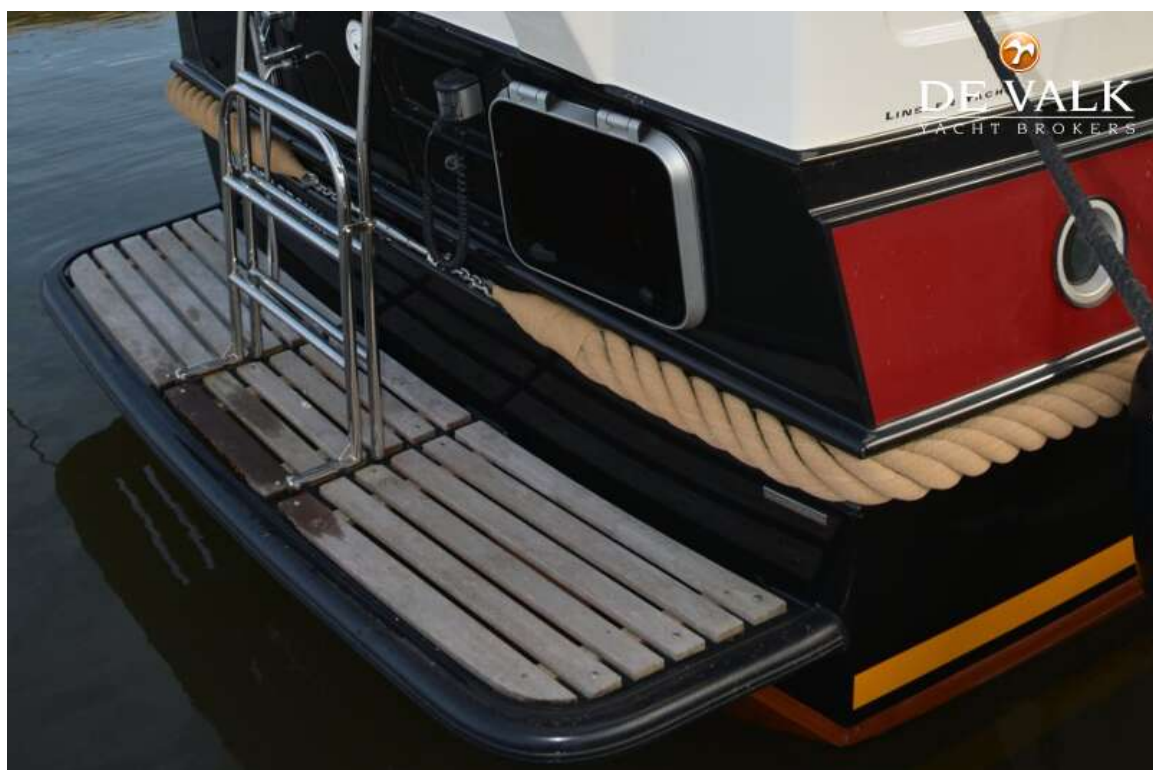
Mooring lines	yes
TV	PHILIPS
Radio-cd player	PHILIPS
Speakers in salon	yes
Fire extinguisher	yes



LINSSEN 320 AC



LINSSEN 320 AC



LINSSEN 320 AC



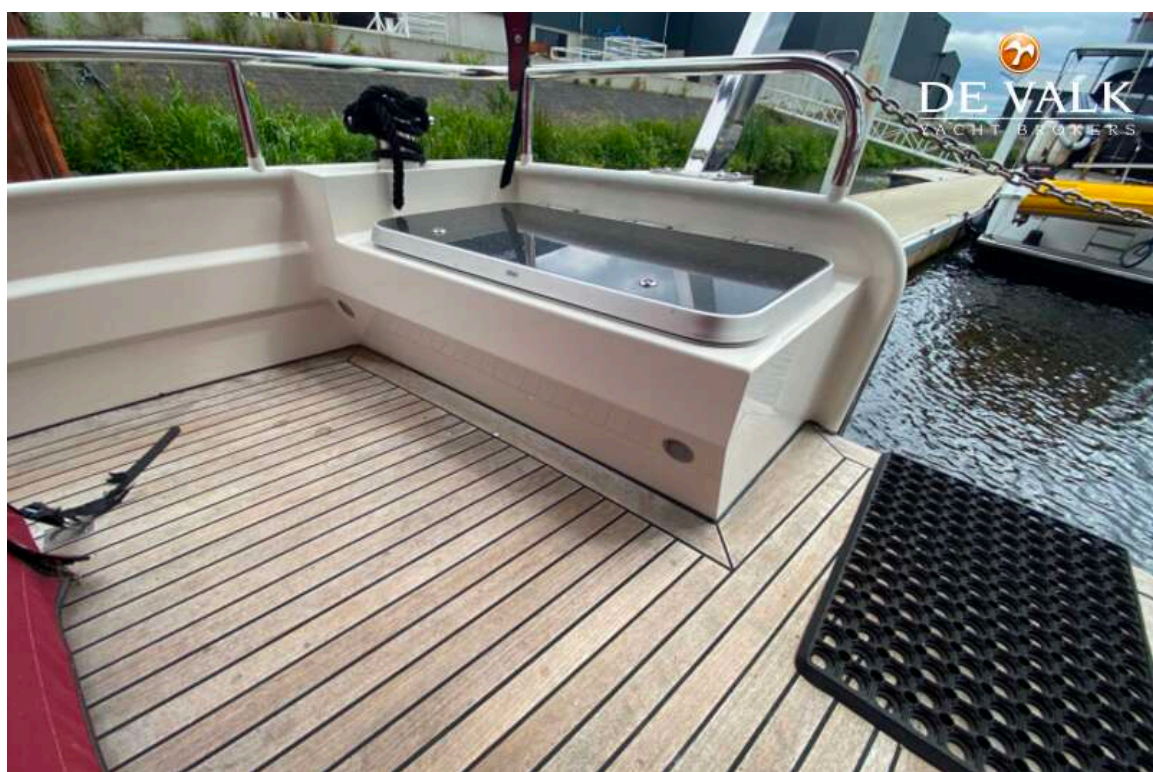
LINSSEN 320 AC



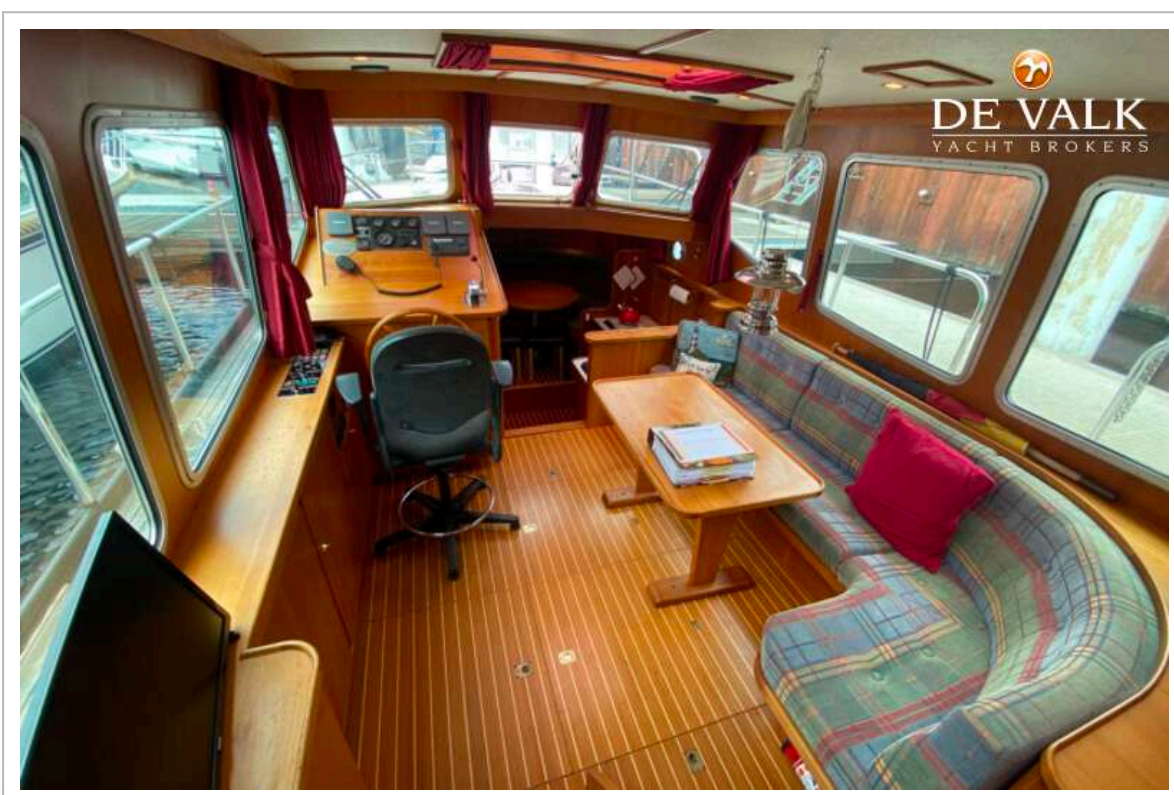
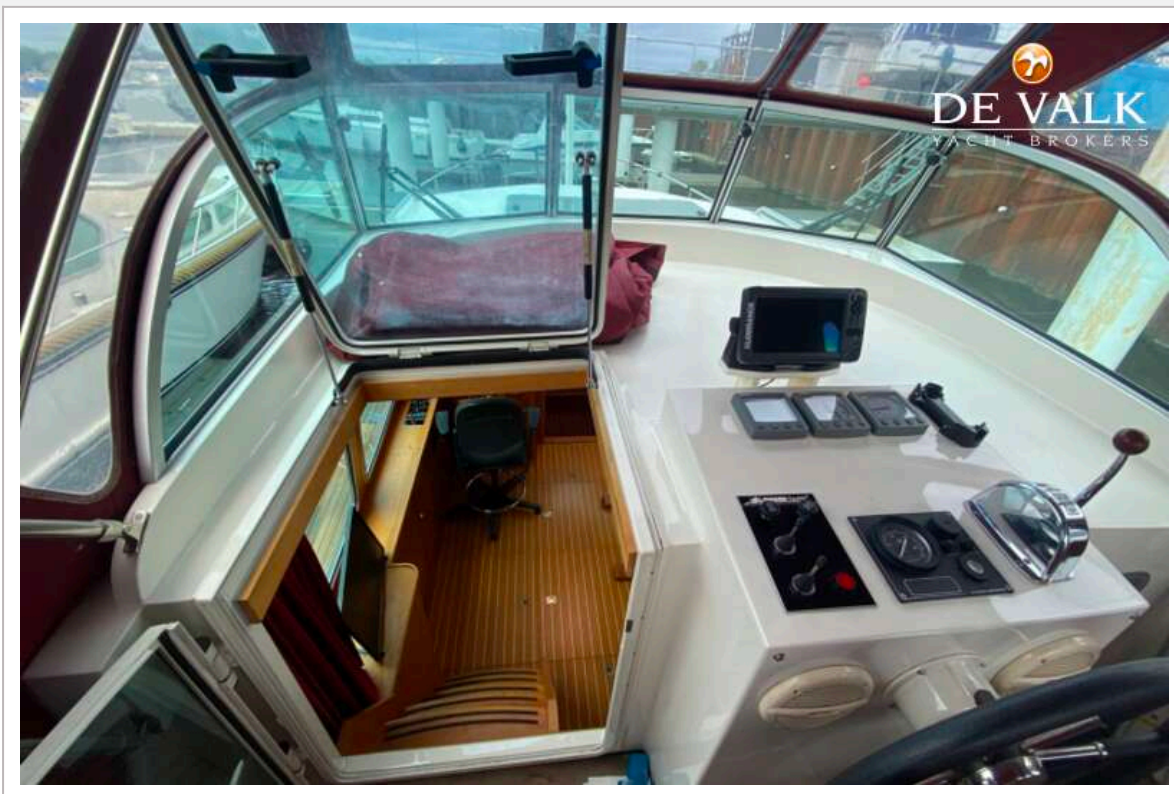
LINSSEN 320 AC



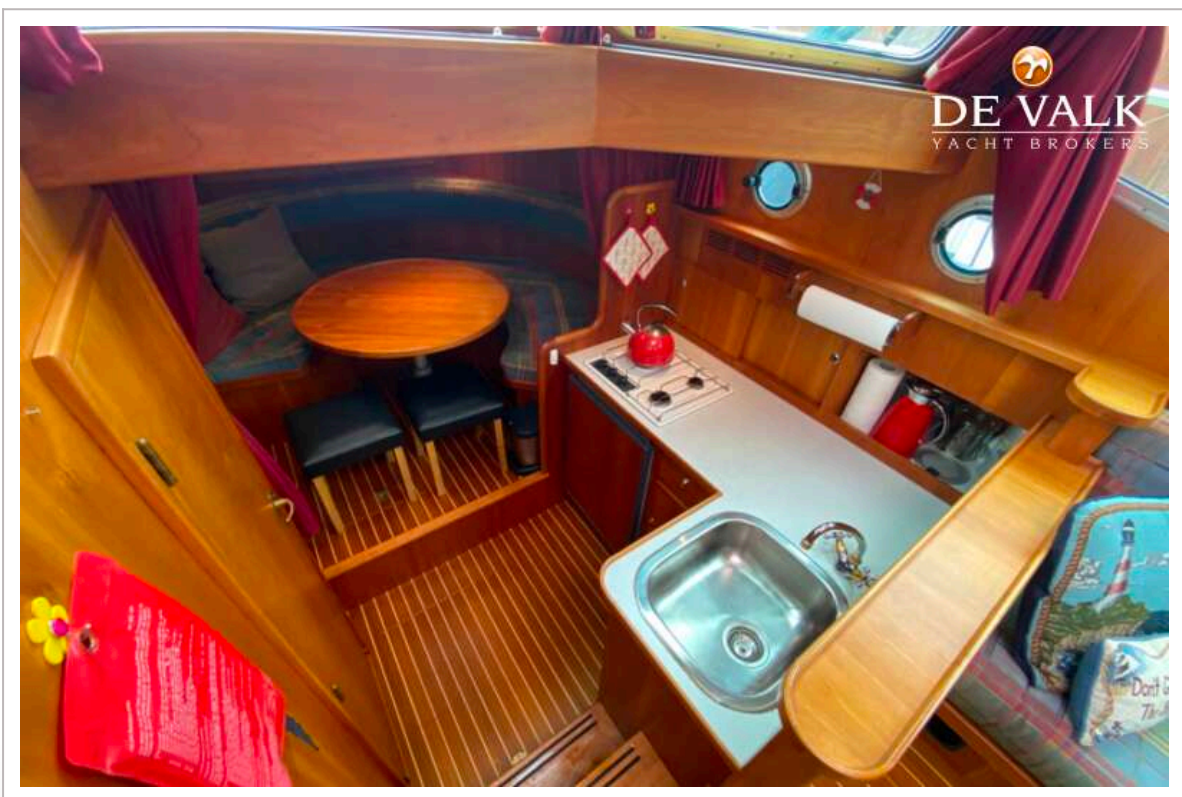
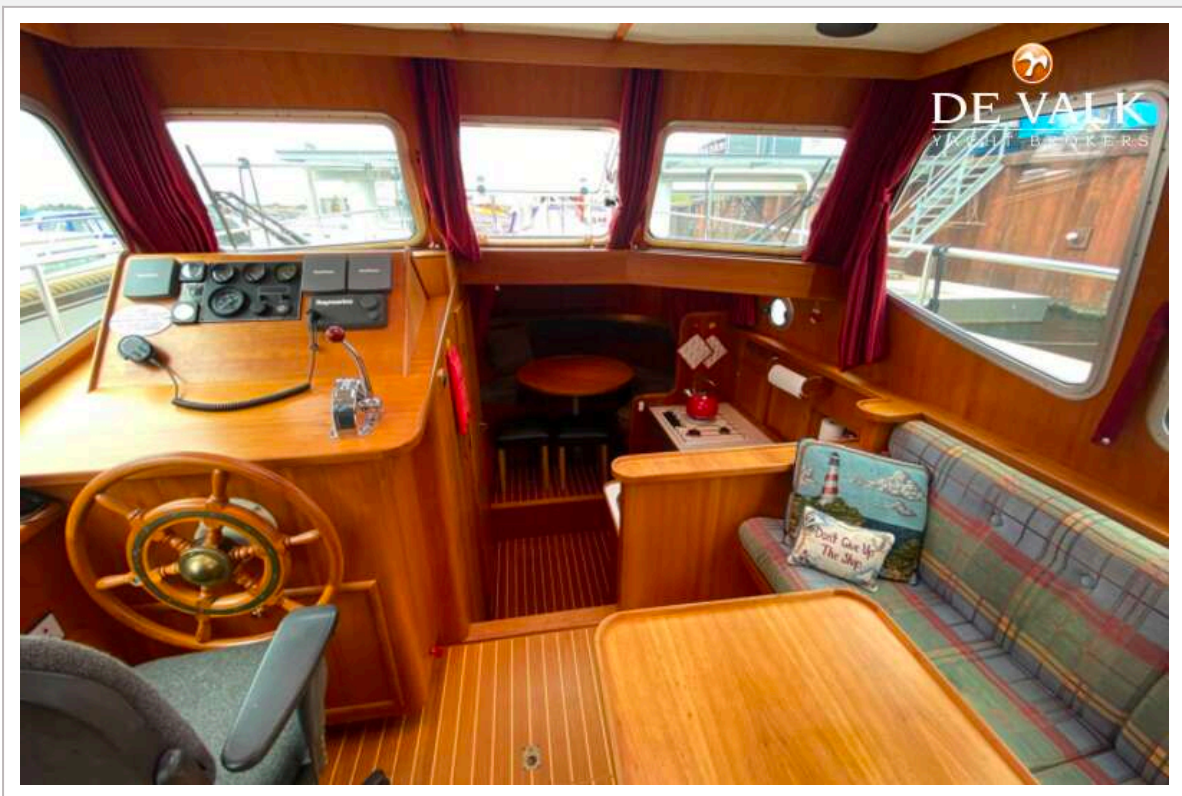
LINSSEN 320 AC



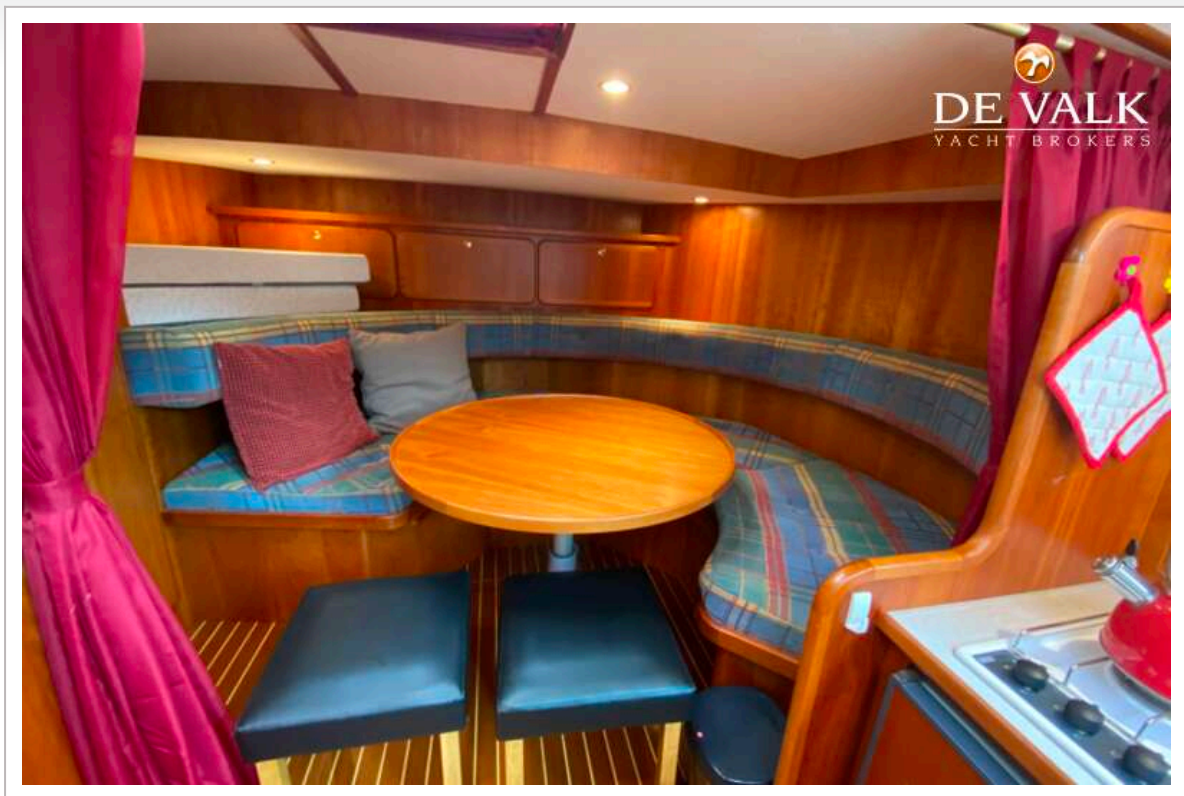
LINSSEN 320 AC



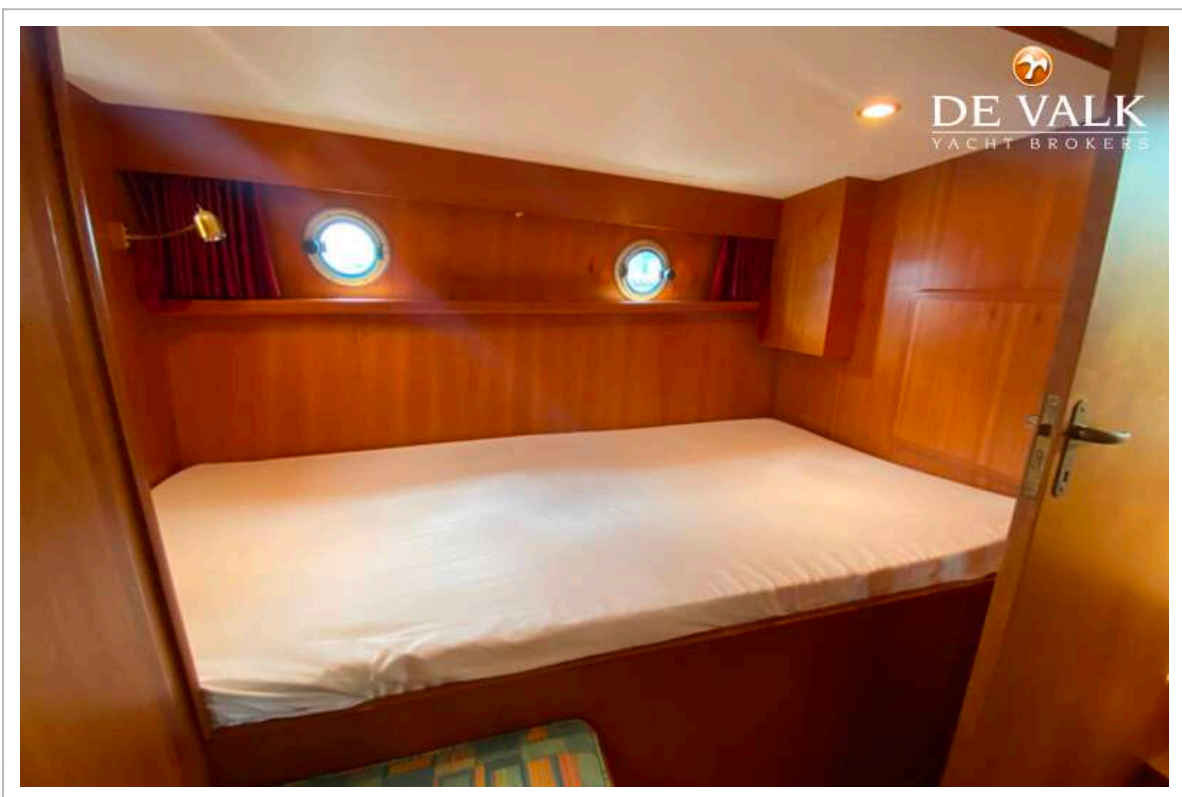
LINSSEN 320 AC



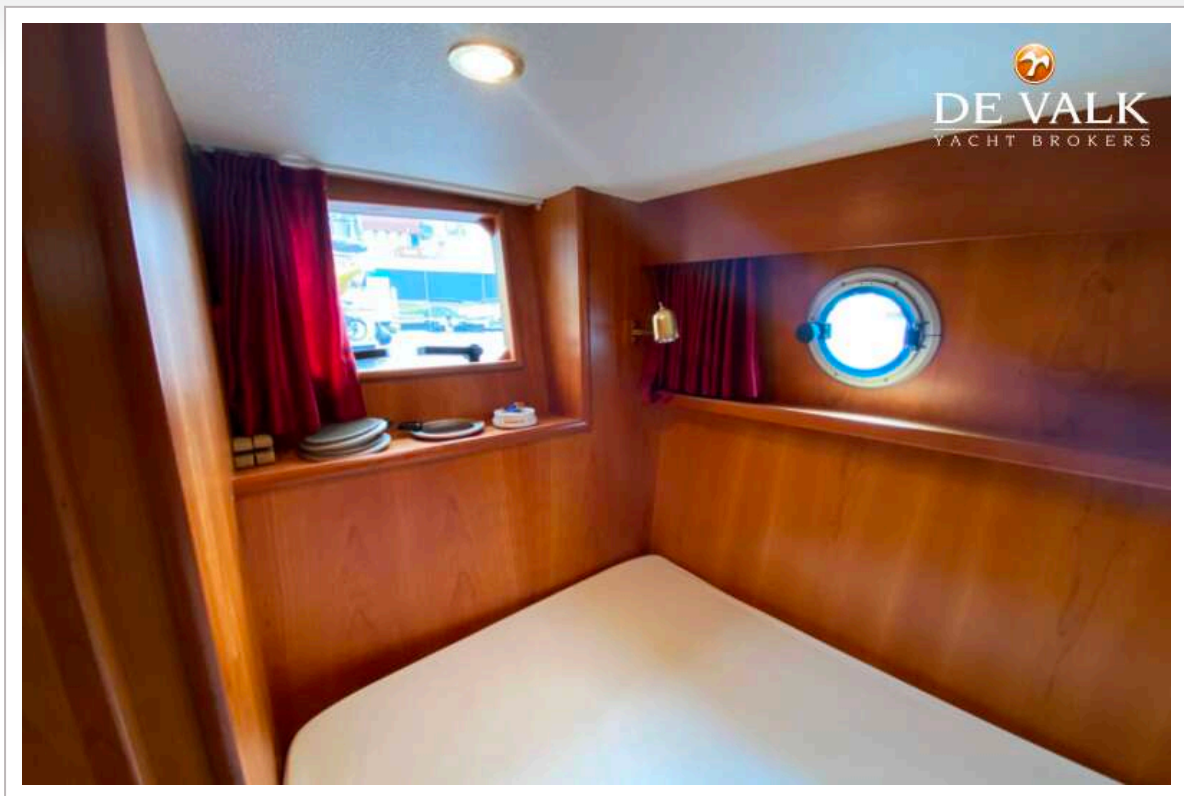
LINSSEN 320 AC



LINSSEN 320 AC



LINSSEN 320 AC



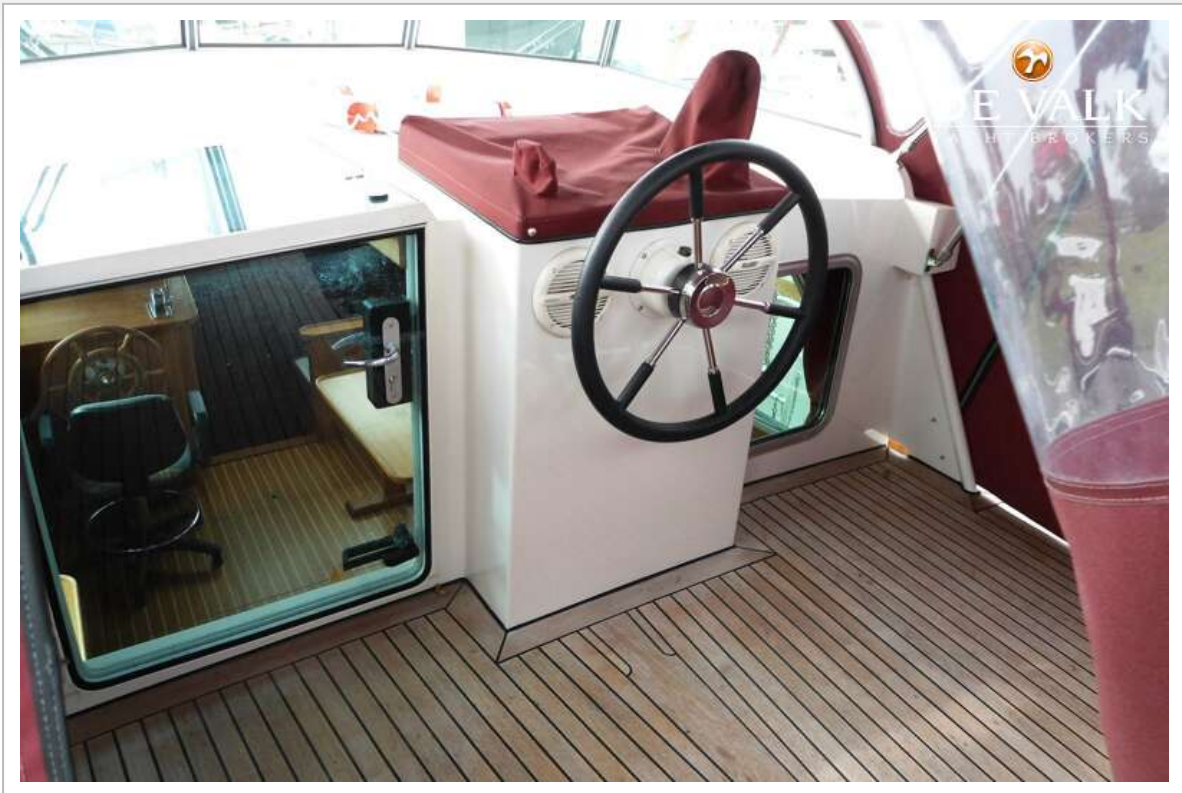
LINSSEN 320 AC



LINSSEN 320 AC



LINSSEN 320 AC



LINSSEN 320 AC

