



CLASSIC MOTOR YACHT



CLASSIC MOTOR YACHT

BROKER'S COMMENTS

A very fine, beautiful and well maintained Classic Motor Yacht. Registered and price honoured in Swedish Motor Yacht Society. Owner is now keen to sell. Price now seriously reduced. Make an offer.

Henrik Trygg

SPECIFICATIONS

Dimensions	12.25 x 2.40 x 0.00 (m)	Builder	Angsholmens varv
Built	1928	Cabins	1
Material	Mahogany	Berths	6
Engine(s)	1 x Volvo Penta Tamd 41	Hp/Kw	200.00 (hp), 147.20 (kw)
Asking price	€ 68.000 (VAT Exempt)	Lying	

CONTACT

Sales office	De Valk Stockholm	Telephone	+46 70 55 26 545
Address	Stockholm Region Stockholm SE	E-mail	stockholm@devalk.nl

DISCLAIMER

These particulars are given in good faith as supplied but cannot be guaranteed.



CLASSIC MOTOR YACHT

GENERAL

Model	CLASSIC MOTOR YACHT
Type	motor yacht
LOA (m)	12,25
Beam (m)	2,40
Year built	1928
Builder	Angsholmens varv
Country	Sweden
Designer	C G Petterson
Displacement (t)	4,5
Hull material	mahogany
Hull colour	White
Antifouling (year)	2024
Mast can be lowered	yes
Fuel tank (litre)	yes
Freshwater tank (litre)	yes
Wheel steering	yes
Outside helm position	yes
Extra info	yes

ACCOMMODATION

Cabins	1
Berths	6
Saloon	yes
Heating	yes
Galley	yes
Cooker	yes
Fridge	yes

MACHINERY



CLASSIC MOTOR YACHT

No of engines	1
Make	Volvo Penta
Type	Tamd 41
HP	200
kW	147.20
Maximum speed (kn)	20



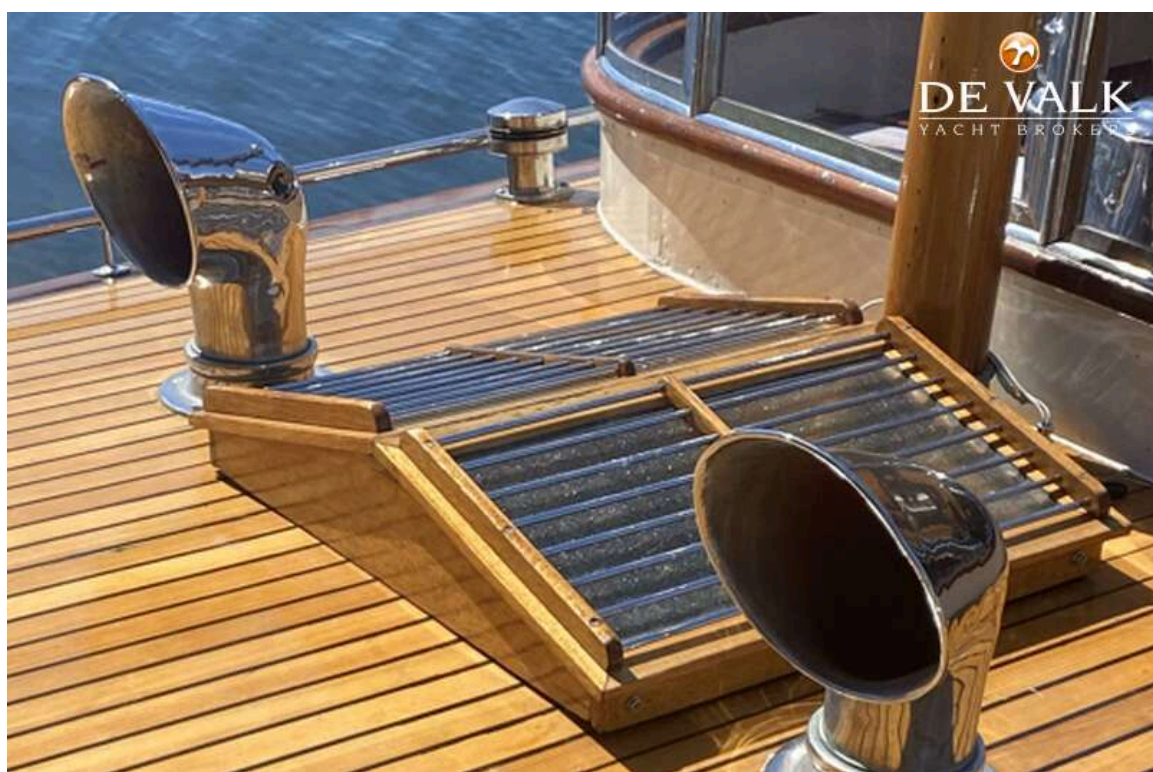
CLASSIC MOTOR YACHT



CLASSIC MOTOR YACHT



CLASSIC MOTOR YACHT



CLASSIC MOTOR YACHT



CLASSIC MOTOR YACHT



CLASSIC MOTOR YACHT



CLASSIC MOTOR YACHT



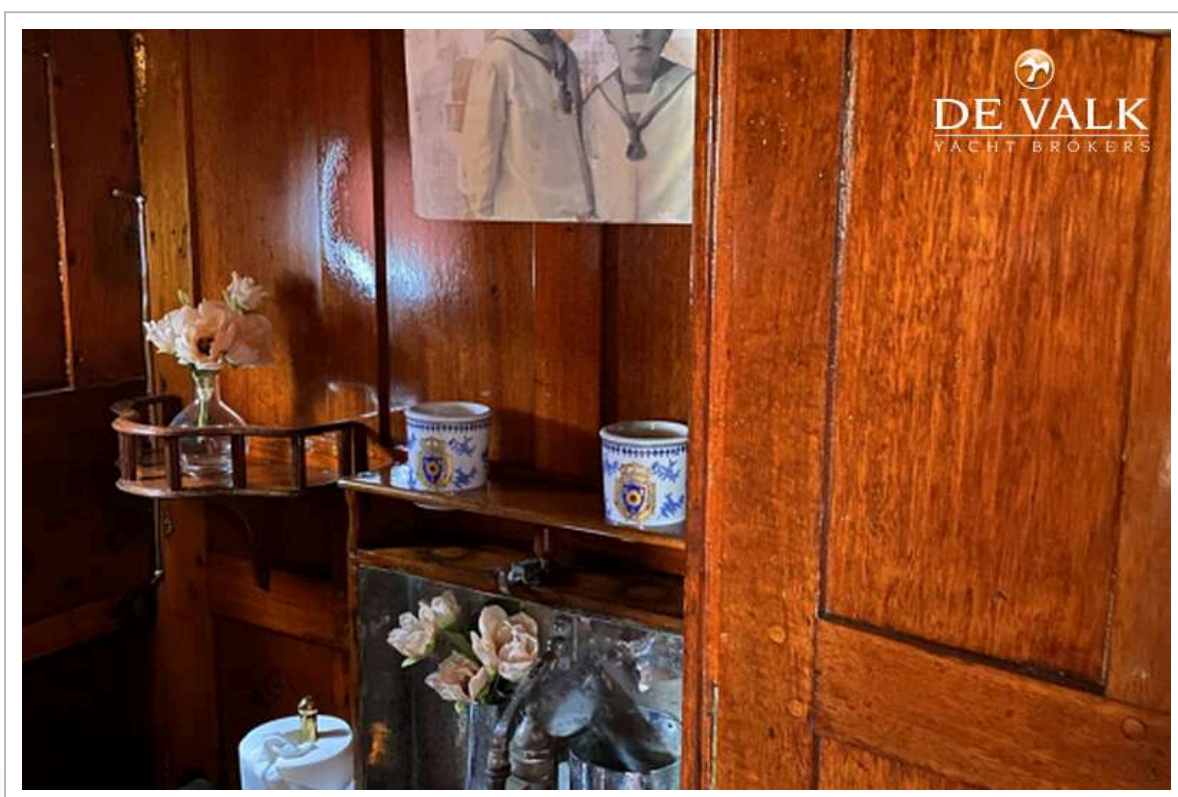
CLASSIC MOTOR YACHT



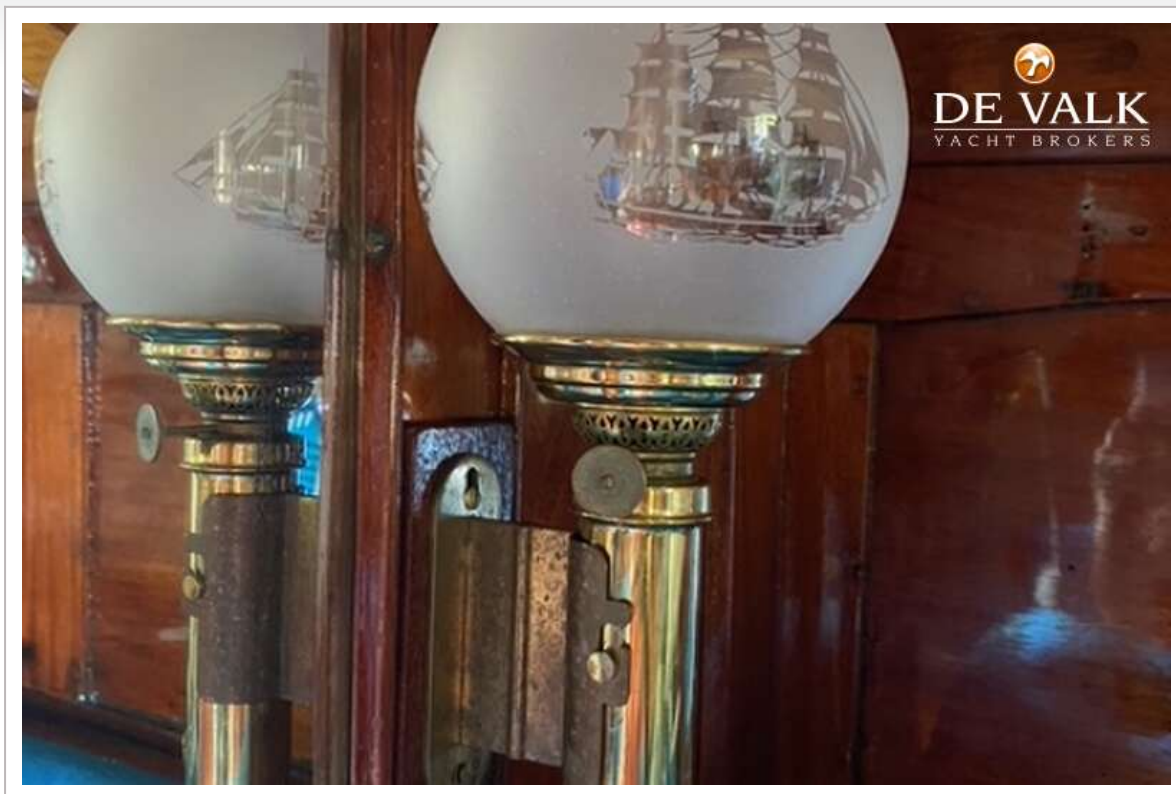
CLASSIC MOTOR YACHT



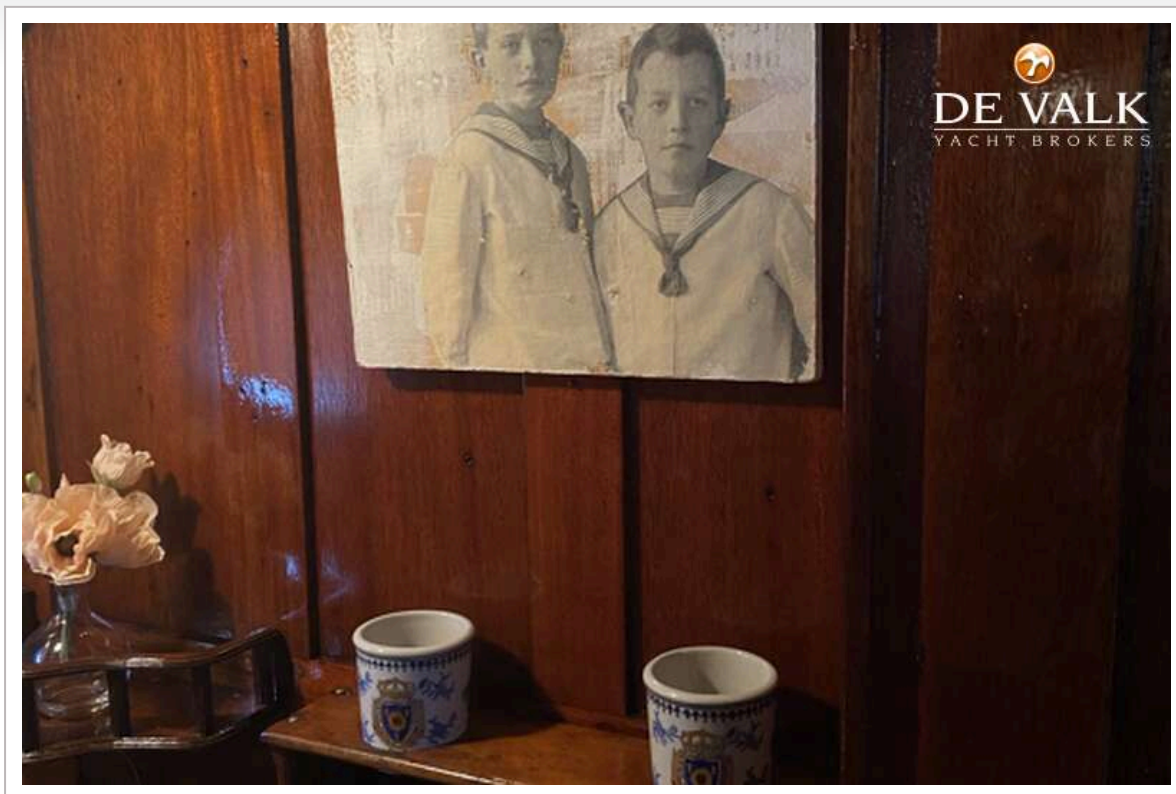
CLASSIC MOTOR YACHT



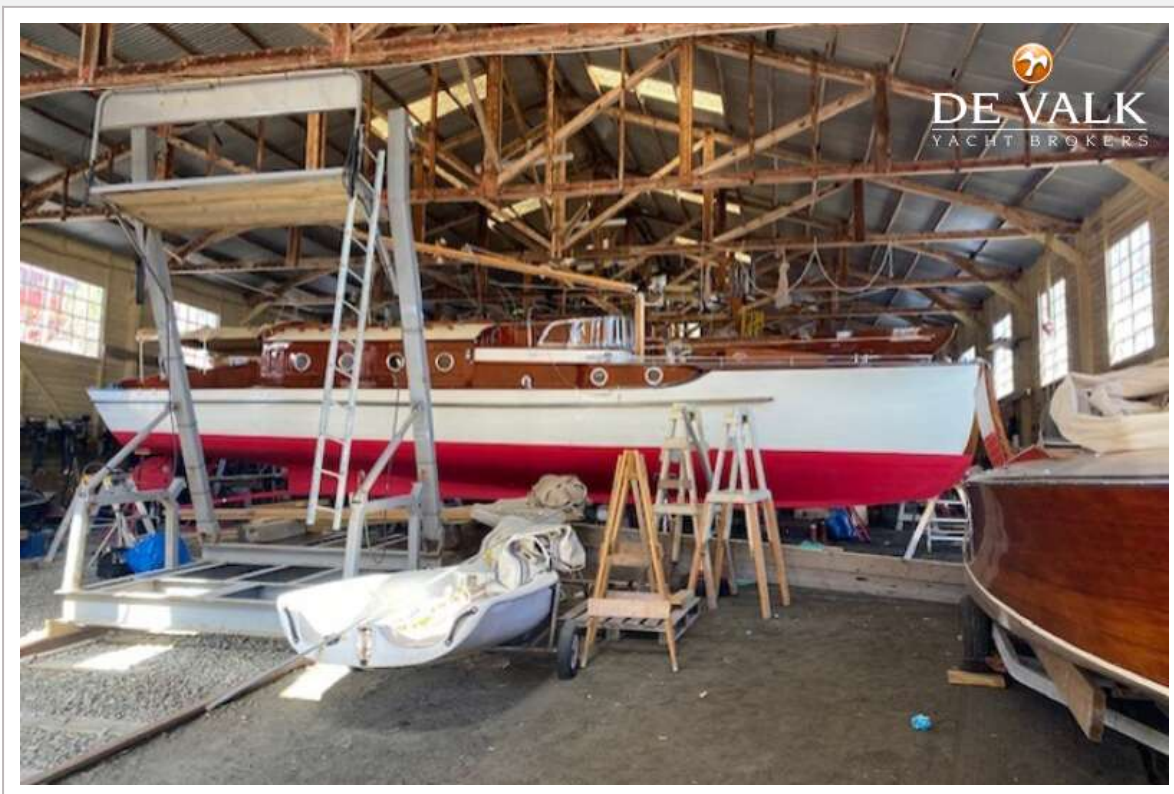
CLASSIC MOTOR YACHT



CLASSIC MOTOR YACHT



CLASSIC MOTOR YACHT



CLASSIC MOTOR YACHT



CLASSIC MOTOR YACHT



CLASSIC MOTOR YACHT

