



DE VALK
YACHT BROKERS



WAUQUIEZ PILOT SALOON 40



DE VALK
YACHT BROKERS

WAUQUIEZ PILOT SALOON 40

BROKER'S COMMENTS

Wauquiez 40 Pilot Saloon, "Seahorse of the solent". Started build in 2004 and launched in 2005, low draft of 1.65. Two cabins with private bathrooms, true deck saloon with linear galley and large cockpit. Many recent upgrades and equipped for longer voyages. Viewing possible at appointment.

Arne Doodeman

SPECIFICATIONS

Dimensions	12.70 x 4.04 x 1,65 / 0.00 (m)	Builder	Wauquiez International S.A.S.
Built	2004	Cabins	2
Material	GRP	Berths	6
Engine(s)	1 x Yanmar 4JH4E diesel	Hp/Kw	55.00 (hp), 40.48 (kw)
Asking price	sold (VAT)	Lying	at sales office

CONTACT

Sales office	De Valk Monnickendam B.V.	Telephone	+31 (0)299 65 63 50
Address	Hoogedijk 6 1145 PM Katwoude NL	E-mail	monnickendam@devalk.nl

DISCLAIMER

These particulars are given in good faith as supplied but cannot be guaranteed.



WAUQUIEZ PILOT SALOON 40

GENERAL

Model	WAUQUIEZ PILOT SALOON 40
Type	sailing yacht
LOA (m)	12,70
Beam (m)	4,04
Draft min (m)	1,65
Year built	2004
Launched	Hull built 2004, builder certified june 2005, first registration december 2005.
Builder	Wauquiez International S.A.S.
Country	France
Designer	Berret-Racoupeau
Displacement (t)	10
Ballast (tonnes)	3600 kg lead in the bulb keel
CE norm	A
Hull material	GRP
Hull colour	white
Hull shape	round-bilged
Keel type	fin keel with bulb
Superstructure material	GRP
Deck material	GRP - GRP sandwich
Deck finish	teak - worn, consistent with age
Cockpit deck finish	teak
Antifouling (year)	2017 Coppercoat. Regular out of the water and constandly maintained.
Window material	polycarbonate
Deckhatch	Lewmar 6 x low profile opening, 1 x Goyot shower opening.
Portholes	Lewmar: 3 hull openings, 2 hull fixed, 2 cockpit opening.
Radar arch	non collapsible
Fuel tank (litre)	polyethylene 200 litre
Level indicator (fuel tank)	- VDO not in function. Dip at tank cap.
Freshwater tank (litre)	polyethylene - A total of: 600 litre. (3 X 200)



Level indicator (freshwater)	VDO
Blackwater tank (litre)	polyethylene - A total of 170 litres. (2 x 85 litre)
Wheel steering	cable steering - Whitlock single wheel steering.
Inside helm position	Possible via Raymarine p70R rotary, direct steering mode.
Outside helm position	yes
Emergency tiller	yes
Extra info	5 x Lewmar insect screens for opening hull/cockpit ports.
Extra info	Leather covered steering wheel.

ACCOMMODATION

Cabins	2
Berths	6
Floor	wood
Open cockpit	yes
Deck saloon	yes
Saloon	yes
Heating	No heating: See * at extra information below for explanation.
Chart table	yes
Dinette to convert into berth	Single, lee cloth, cushion to convert to double berth.
Opening door to cockpit	Polycarbonate sliding cover and removable panel, lock and security bar.
Galley	yes
Countertop	corian - white coloured
Sink	stainless steel - Double sink
Cooker	- Eno 0823 gas two burner/oven
Oven	Eno 0823 gas
Microwave	Bosch HMT702C 230v
Fridge	- Weaco front opening fridge with ice compartment.
Freezer	Top opening, use as fridge or freezer, 12V Weaco.
Hot water system	Quick BXS40-12S stainless 40L/1200W new 2019.
Water pressure system	electrical - Jabsco with accumulator tank.



WAUQUIEZ PILOT SALOON 40

Owners cabin	French bed - Lee cloths
Wardrobe	hanging/drawers/shelves
Bathroom	en suite
Toilet	Jabsco
Toilet system	manual
Wash basin	yes
Shower	- dedicated en suite cubicle.
Guest cabin 1	v-bed - Lee cloths
Wardrobe	hanging/drawers/shelves
Bathroom	en suite
Toilet	Jabsco
Toilet system	manual
Wash basin	yes
Shower	Hand shower in the bathroom.
Extra info	* No heating: fittings (hot air pipes, electronics) remain from removed Eberspacher D5LC.
Extra info	** External locker for 2 x Campingaz cannisters.

MACHINERY

No of engines	1
Make	Yanmar
Type	4JH4E
HP	55
kW	40.48
Fuel	diesel
Engine hours	2300 (1430 old, 870 new meter June 2024)
Engine cooling system	freshwater heat exchanger
Drive	shaft
Engine controls	bowden cable
Gearbox	hydraulic - Kanzaki 35A2
Bowthruster	electric - Side-Power SE 100/185 T (new 2019)



WAUQUIEZ PILOT SALOON 40

Exhaust	watercooled
Thrust bearing	yes
Propeller type	folding - Max Prop Easy 90 (new 2023)
Propeller blades	3 bladed
Propeller shaft material	stainless steel
Shaft lubrication	water - Volvo water lubricated
Electric bilge pump	yes
Generator	See extra info: *
Generator 2	See extra info: **
Start battery	1 x 100ah (new 2023)
Service battery	A total of 720ah: 4 x Exide AGM 180ah. (new 2020)
Bowthruster battery	1 x Optima AGM 50ah high-power. (new 2024)
Battery monitor	Simarine Pico, 2-shunt/multi-sensor batteries management with wifi app. (new 2020)
Battery charger	Victron Centaur 12/60 for shore-power, also charge from engine, solar, wind and hydro generators.
Inverter	Victron Phoenix 12/2500, 230V 2.5kW
Wind generator	Eclectic Energy D400, 400W (new 2017)
Solar panel	3 x solar panels, total 250W, Victron Smart-Solar 100/20 MPPT controller. (new 2021)
Diode battery combiners	Victron Battery isolator
Shorepower	with cable - With 16A cable, 10x230V. Euro sockets in cabins.
Insulation transformer	Shorepower Galvanic Isolator: Safeshore GI 100smi 230V, Earth protction.
Watermaker	No: the space is prepared with through-hull valves.
Extra info	Victron ArgoFET 100-3 battery isolator (new 2023)
Extra info	Hitachi alternator, 12V/80A.
Extra info	* Generator on the main engine: Dynawatt, 230V, 4kW with dedicated inverter. ** Hydro generator: Watt & Sea 300W transom/for sailing. (new 2016)

NAVIGATION

Compass	Plastimo Horizon 135 liquid compass
---------	-------------------------------------



WAUQUIEZ PILOT SALOON 40

Multi control display	At the chart table: Raymarine i70& p70R controllers networked (new 2016) At the cockpit steering: 2 x Raymarine i70 & p70R controllers, networked (new 2016)
Depth sounder/log	Raymarine neworked via Raymarine iTC-5 hub
Windset	Raymarine neworked via Raymarine iTC-5 hub
VHF	- VHF: Navicom RT-550 AIS-DSC, ATIS, AIS Rx (new2015) - VHF Antennae: Vesper Mast-head Whip & Splitter for VHF, FM & AIS Tx/Rx, pluggable backup on arch.
VHF handheld	Navicom RT-311 (new 2015)
Autopilot	- Autopilot/digital compass: Raymarine, ACU-400, EV-1 sensor (new 2016) - Autopilot drive: Lecomble & Smitt hydraulic ram.
Wind vane steering install.	Hydrovane wind-vane self-steering with own rudder.
Rudder angle indicator	Displayed in the screen of the autopilot controls
Radar	- Raymarine Quantum Q24C (wifi, on mast, integrated, new 2022) - Furuno 1623 (on arch)
Radar/GPS/plotter	Raymarine eS217 12" wifi MFD for mSD charts (new 2016) at the chart table and Raymarine a95 9" wifi MFD networked at the cockpit steering. (The Touch screen is not working, can be controlled with phone,remote control wifi app.)
Navtex	Furuno Navtex NX-300 GMDSS MF safety/wheather, new antenna/cable 2016
AIS transceiver	Vesper WatchMate Vision wifi/network to MFDs
Navigation lights	Masthead tricolour, anchor, steaming, low level, all LED 2016 exept stern light bulb.(on arch)
Extra info	- Radar Target Enhancer: Echomax active XS dual band RTE & passive reflector. - MF/HF SSB Long Range: Icom Ic-801E DSC & Ham ocean frequencies. - MF/HF Pactor 4 Modem for SSB: SCS P4 Dragon DR--7400 Pactor with Bluetooth. - MF/HF Antennae: Icom ATU-141 tuner, backstay Tx & DSC Rx whip (on arch) antennae, KISS-SSB ground.
Extra info	Duel redundancy of critical systems for extended voyages: plotters, Radar, GPS (2MFDs & Vesper), AIS Rx, VHF, Antennae; configure all at chart table; wind-vane and electro-hydraulic self-steering. All Raymarine, Vesper & Actisense NMEA &wifi networked, diagram available, all new 2016.



EQUIPMENT

Sprayhood	New 2016, windows cloudy.
Cockpit cover	yes
Bimini	yes, the bimini can be made to a full tent.
Cockpit table	yes, from Dufour, fixed, bi-fold, foot & grap rails.
Bathing platform	Folding bathing platform
Boarding ladder	Removable
Transom door	yes
Bow ladder	Stainless steel, custom design, swing-up, new 2021
Gangway	yes
Anchor	- Lewmar Delta anchor 20 KG
Anchor chain	10mm
Windlass	electrical Lofrans Cayman 1 kw, wireless, new 2019.
Sea railing	wire New 2016
Grab rail (superstructure)	stainless steel
Pushpit	yes
Pulpit	yes
Life raft	container - Needs service
Life raft (pers)	6
Rope cutter	New 2023
Fenders	yes
Mooring lines	yes
TV receiver	Glomex active TV antenna & amplifier ,DC outlet. (there is no TV)
Radio-cd player	Pioneer DEH-X8700DAB, new 2016
Clock - barometer	Plastimo clock and barometer (2016), Vion barometer
Extra info	- Gallery crockery & cutlery: Wauquiez "W" monogram pattern set available.
Extra info	- All LED bulbs (2017) - 3 x external UV/privacy screens for the deck saloon windows. - internal curtains - Extra stainles steel hand rails throughout saloon.



Extra info

Owner's comments: " We are the second owners of this boat and we bought her in France in 2016. Since then we have sailed in the UK, France, and we enjoyed exploring the Dutch canals on the Staande Mastroute from Vlissingen through to Lauwersoog. We have spent 3 seasons sailing via the North Sea to explore the Baltic Sea countries. Seahorse is based from a home berth in The Netherlands. When we bought the boat, we had hopes of sailing much further afield and the boat was refurbished, comprehensively equipped and prepared accordingly. However, personal circumstances and family commitments now mean we will be unable to make such voyages ourselves. We would therefore hope a new owner may take advantage of our preparations while the boat and its equipment are still in good condition to do so."

RIGGING

Rigging

sloop - Sloop "solent" type twin furlers.

Standing rigging

wire - Stainless steel wire, new 2016.

Brand mast

Z-Spar And Selden aluminium boom (2021)

Material mast

aluminium

Spreaders

2 aluminium spreaders

Mainsail

Full-battened Mainsail: Sanders UK DP084 Vectron fibres, heavy duty, new 2018, 2021 first in use.

Mainsail cover

New 2016, lazy-jacks, easy stack-pack & mast boot cover.

Cutterstay

"Solent Rig" type

Jib

Cutter sail: Sanders Uk Hydranet radial HNR393 with Dyneema fibers, Heavy duty, Self-tacking Jib. New 2018, 2021 first in use.

Genoa I

Sanders UK Hydranet radial HNR393 with Dyneema fibers, 155%, new 2018, 2021 first in use.

Genoa furler

Profurl, reefing

Cutter furler

Profurl, reefing

Gennaker

Fullstrom 64.2m2 roller furling, asymmetric. Gennaker tack, removable aluminium bowsprit. Gennaker furler: Facnor, continuous line furling.

Reefing System

slabreefing - 3x reefs (2 x single line)

Primary sheet winch

2 x Andersen 46ST



WAUQUIEZ PILOT SALOON 40

Halyard winches

1 x Andersen 40ST and 1 x Harken 40.2 STE electric

Spi-pole

Harken, mounted on mast tack

Extra info

Mast climbing steps: extended steps to the top of mast. (2016)

Extra info

Running rigging replaced 2016 Rig safety surveys made in 2015, 2018 & 2021.



WAUQUIEZ PILOT SALOON 40



WAUQUIEZ PILOT SALOON 40



WAUQUIEZ PILOT SALOON 40



WAUQUIEZ PILOT SALOON 40



WAUQUIEZ PILOT SALOON 40



WAUQUIEZ PILOT SALOON 40

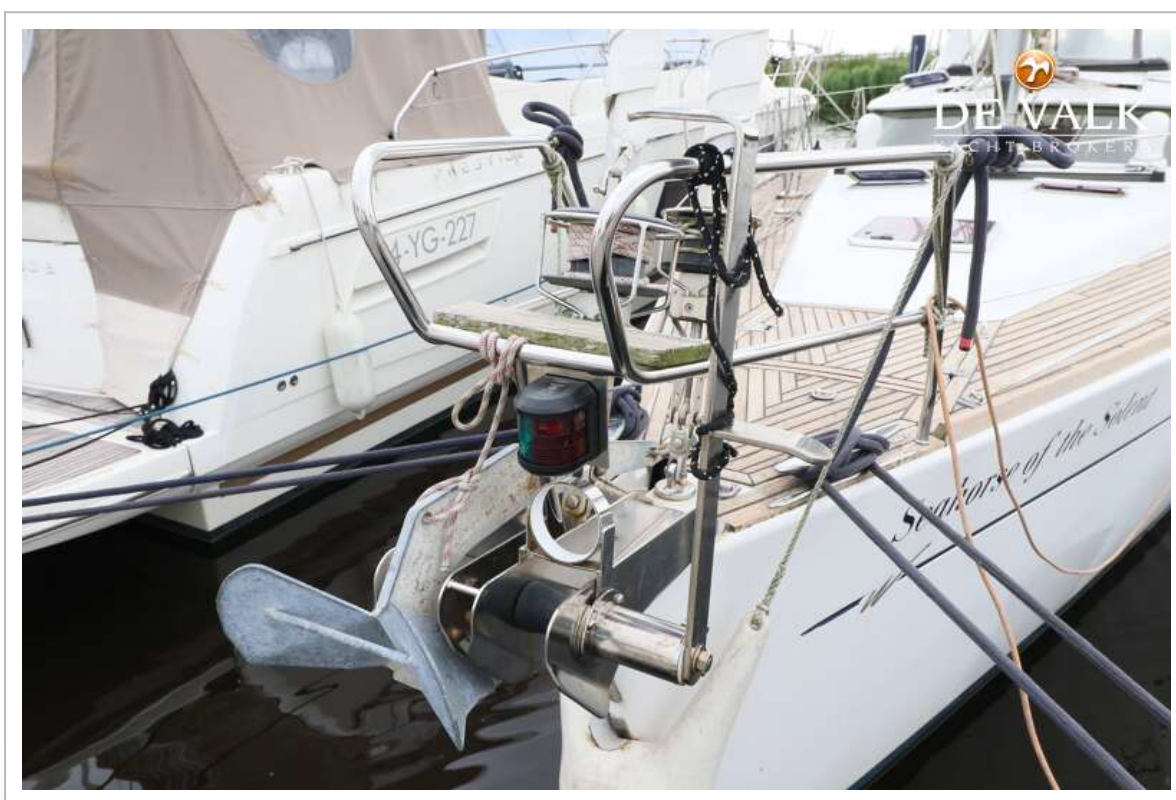
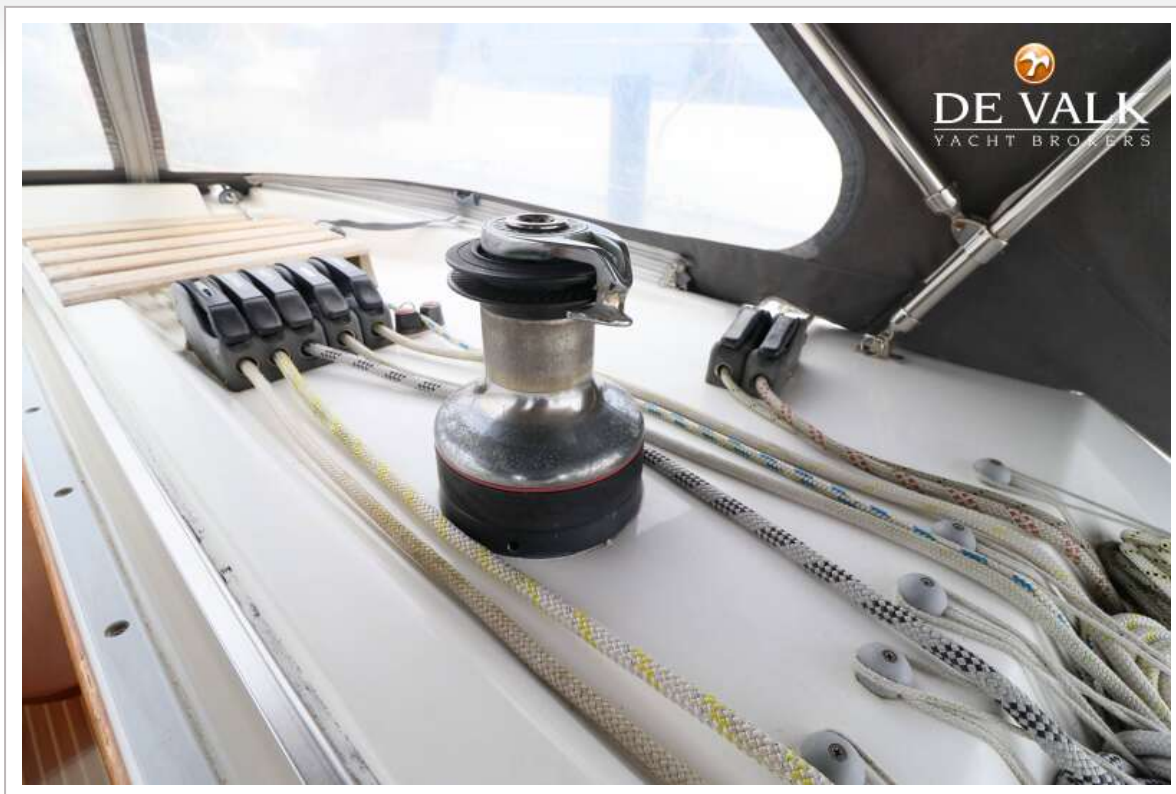


WAUQUIEZ PILOT SALOON 40

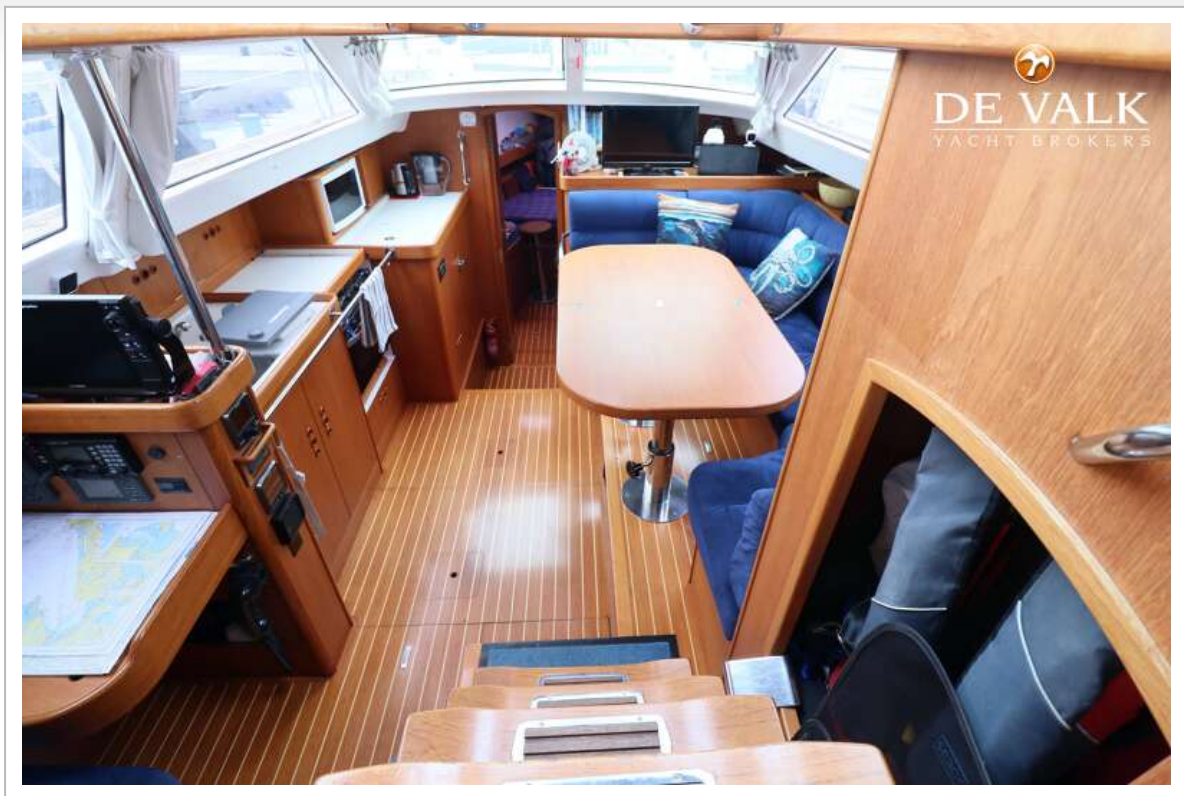




WAUQUIEZ PILOT SALOON 40



WAUQUIEZ PILOT SALOON 40



WAUQUIEZ PILOT SALOON 40



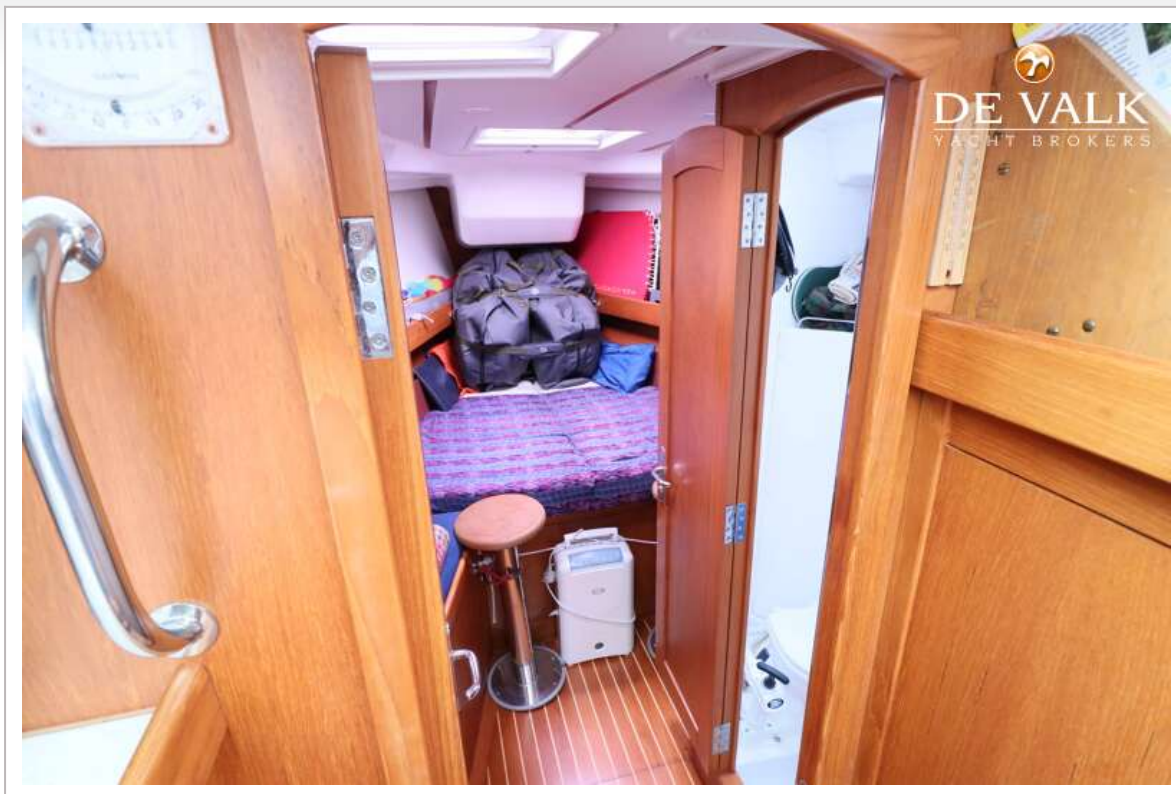
WAUQUIEZ PILOT SALOON 40



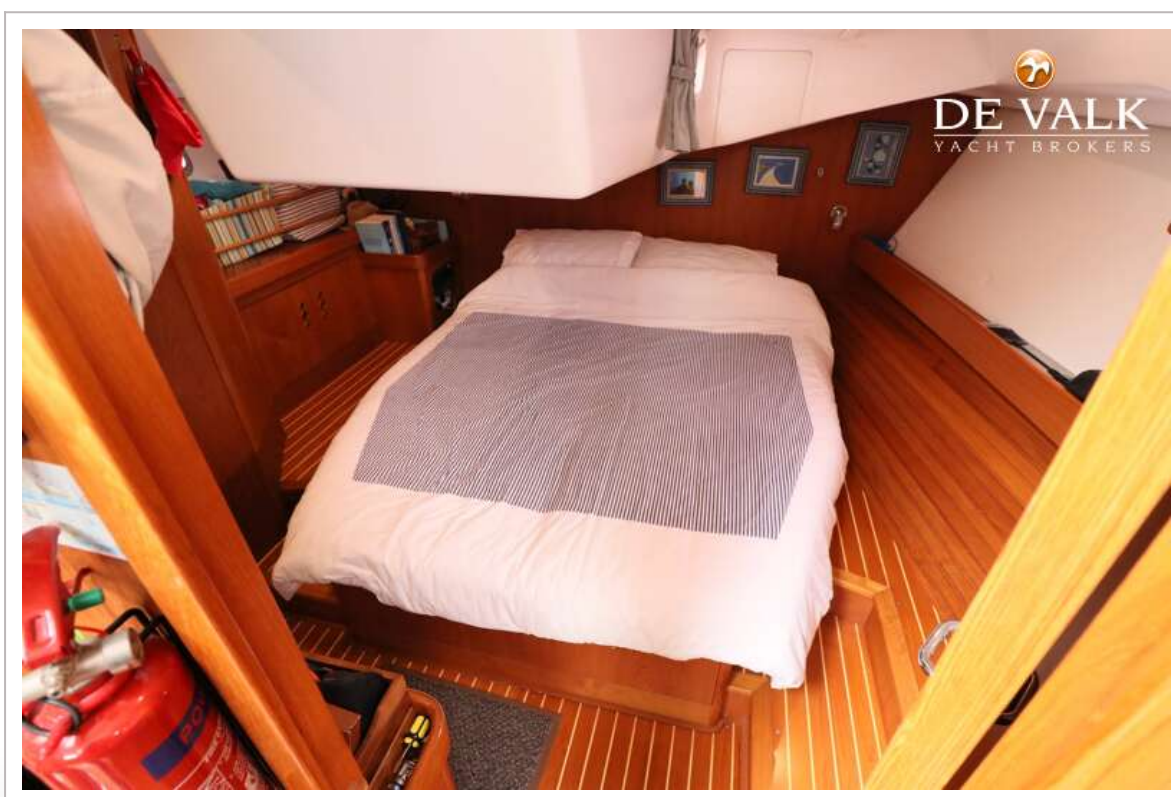
WAUQUIEZ PILOT SALOON 40



WAUQUIEZ PILOT SALOON 40



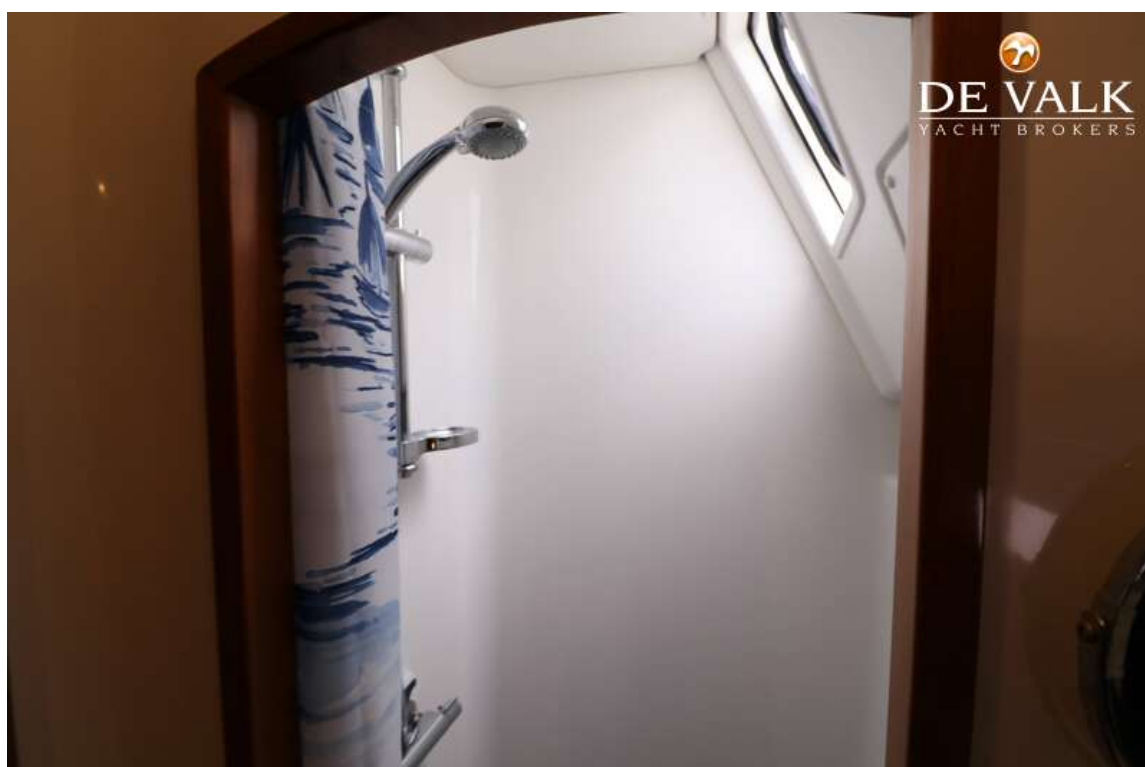
WAUQUIEZ PILOT SALOON 40



WAUQUIEZ PILOT SALOON 40



WAUQUIEZ PILOT SALOON 40



WAUQUIEZ PILOT SALOON 40





WAUQUIEZ PILOT SALOON 40

