



DE VALK
YACHT BROKERS



VICTOIRE 1200



DE VALK
YACHT BROKERS

VICTOIRE 1200

BROKER'S COMMENTS

The Victoire 1200 "Rebel" is elegant and sturdy. Whether you are crossing oceans or cruising secluded shallow waters she will bring you and your crew everywhere safely, swiftly and in great comfort. The Victoire 1200 "Rebel" is designed for a couple while an extra 3 pers berth is available. The beautiful high quality teak interior joinery work further ample storage space and a very spacious bathroom. The Victoire 1200 'Rebel' has a proven record of seaworthiness having sailed her current owners around for more than 8 years while living on board and is all set to take you on your next voyage.

Johan Schootstra

SPECIFICATIONS

Dimensions	12.00 x 3.64 x 1.70 (m)	Builder	Victoire Jachtbouw
Built	1995	Cabins	2
Material	GRP	Berths	7
Engine(s)	1 x Volvo Penta D2-55F new 2017 diesel	Hp/Kw	55.00 (hp), 40.48 (kw)
Asking price	sold (VAT)	Lying	at sales office

CONTACT

Sales office	De Valk Hindeloopen B.V.	Telephone	+31 514 52 40 00
Address	Oosterstrand 1 8713 JS Hindeloopen NL	E-mail	hindeloopen@devalk.nl

DISCLAIMER

These particulars are given in good faith as supplied but cannot be guaranteed.



VICTOIRE 1200

GENERAL

Model	VICTOIRE 1200
Type	sailing yacht
LOA (m)	12,00
LWL (m)	9,80
Beam (m)	3,64
Draft (m)	1,70
Air draft min (m)	17,60
Headroom (m)	2,00
Year built	1995
Builder	Victoire Jachtbouw
Country	The Netherlands
Designer	Dick Koopmans
Displacement (t)	9,8
Ballast (tonnes)	cast iron 3,9 t
Hull material	GRP
Hull colour	blue
Hull shape	round-bilged
Keel type	fin keel with bulb Scheel keel
Superstructure material	GRP
Rubbing strake	wood + stainless steel
Deck material	GRP
Deck finish	non-skid paint KiwiGrib
Superstructure deck finish	teak
Cockpit deck finish	teak
Antifouling (year)	2022 Seajet 309 Mid Blue Comp A+B
Dorades	2x stainless steel
Window frame	aluminium Gebo
Window material	tempered glass
Deckhatch	3x with blackout blind and mosquito net Anti-burglar stainless steel grilles in all escape hatches.
Fuel tank (litre)	stainless steel 180 ltr.



VICTOIRE 1200

Level indicator (fuel tank)	yes
Freshwater tank (litre)	stainless steel 1x 200 & 1x 100 ltr.
Level indicator (freshwater)	yes
Blackwater tank (litre)	35 ltr.
Wheel steering	rack & pinion Withlock cobra
Emergency tiller	yes
More info on hull	Original gelcoat

ACCOMMODATION

Cabins	2
Berths	7
Interior	teak
Layout	Beautiful spacious saloon with kitchen, in front a V-bed, behind another cabin with double bed and a shared toilet room with shower.
Floor	teak and holly
Saloon	LED interior lighting dimmable
Headroom saloon (m)	1,80 / 2,10 mtr.
Heating	diesel ducted hot air Webasto Air Top 32D
Navigation center	yes
Chart table	yes
Aft Cabin	yes
Convertible berth	yes
Galley	Yes, headroom 2 mtr.
Countertop	Formica
Sink	stainless steel double
Cooker	calor gas And propaan Techimpex new 2016
Oven	In cooker
Fridge	Isotherm Asu water-cooled
Hot water system	220V + engine
Water pressure system	electrical with 3 filters and UV lamp
Manual and/or foot pump	Hand pump 1x freshwater 1x saltwater



VICTOIRE 1200

Owners cabin	double bed Neptune mattresses + slatted frame
Bed length (m)	2.10 x 1.60 mtr.
Wardrobe	hanging and shelves
Guest cabin 1	v-bed + bunk bed (starboard) Neptune mattresses
Bed length (m)	2.50 mtr.
Wardrobe	hanging and shelves
Bathroom	shared
Toilet	Jabsco
Toilet system	manual
Wash basin	yes
Shower	yes
Extra info	All floor hatches and lockers have a storm / roll-over closure
Extra info	Special lock on 2-piece wooden bulkhead entrance + extra Perspex for bulkhead entrance

MACHINERY

No of engines	1
Make	Volvo Penta
Type	D2-55F new 2017
HP	55
kW	40.48
Fuel	diesel
Year installed	2017
Maximum speed (kn)	7,50
Cruising speed (kn)	6
Engine hours	1191
Engine cooling system	freshwater heat exchanger with Hollex waterfilter type 3
Drive	sail-drive
Saildrive seal	2017 new Sail-drive 130S-B in 2017
Engine controls	bowden cable
Gearbox	mechanical



VICTOIRE 1200

Bowthruster	electric Sleipner
Exhaust	watercooled
Propeller type	folding Volvo
Propeller blades	3
Manual bilge pump	yes
Electric bilge pump	yes
Electrical installation	12 + 220 Volt
Start battery	AGM 150Ah new 2022
Service battery	AGM 2x 200Ah new 2022
Bowthruster battery	1x 185Ah new 2022
Battery monitor	MICC control unit
Battery charger/inverter	Mastervolt mass combi 12/2500-100 new 2015
Wind generator	Superwind
Solar panel	Side panels 4x 50 Wp Fence panel 240 Wp MPT200-12 mppt controller
Shorepower	with cable various adapters
Extra info	Double Hengst Racor Fuel Filters
Extra info	Lift for outboard motor stainless steel

NAVIGATION

Compass	Plastimo
Depth sounder	Autohelm ST50+
Log	Autohelm ST50+
Windset	2x Autohelm ST50+
VHF	Icom IC-M505 DSC + remote HM-162E at helm.
VHF handheld	2x handheld HX 270 E
Autopilot	Raymarine ST7000+
Wind vane steering install.	Windpilot Pacific
Radar	Raymarine analog
GPS	1x Mobile GPS 72, 1x GPS 76
Radar/GPS/plotter	Raymarine c80



VICTOIRE 1200

Navtex	Easy navtex
AIS transceiver	True heading CTRX Graphene+ AIS WatchMate at helm
Radio receiver	SSB Icom IC-718 + P4dragon modem Antenne tuner AT-141
EPIRB	ARC RLB-37 rev.G
Navigation lights	+ Additional emergency navigation lighting
Searchlight	700/000 Lumen
Extra info	Sony world receiver ICF-SW 7600GR
Extra info	RF2FU satellite receiver Iridium Go Handheld wind meter Hand bearing compass

EQUIPMENT

Fixed windscreen	yes
Sprayhood with grab rail	closable
Cockpit cover	yes
Bimini	With shadow panels
Sun awning	yes
Winter cover	covers for winter storage
Cockpit table	yes
Boarding ladder	stainless steel
Anchor	Bruce 30 kg
Anchor chain	85 mtr. 8 mm
Anchor 2	Fortress aluminium 7,1 kg
Anchor chain	+15m chain + 30m line
Windlass	electrical Lewmar gipsy V2 Additional switch control at helm
Capstan	yes
Deck wash	yes
Dinghy	Zodiac 3 mtr.
Outboard	Yamaha 6 hp
Outboard support	2x
Sea railing	wire
Grab rail (superstructure)	teak



VICTOIRE 1200

Pushpit	yes
Pulpit	yes
Lifejackets	yes
Lifebuoy	yes
Danbuoy	yes
Safety lines on deck	yes
Horn	Misthoorn
Binocular	Binocom/CLS van Bresser 7x50
Radar reflector	Tripod + metaal
Fenders	yes
Mooring lines	yes
Spare parts	Lots of
Tools	yes
Radio-cd player	Alphine
Speakers in salon	yes
Clock - barometer	Wempe + UTC clock
Fire extinguisher	3x
Extra info	Grapnel anchor 8 kg+line Grapnel anchor for in dingy
Extra info	Hydraulic wirecutter Holmatro EWC14H

RIGGING

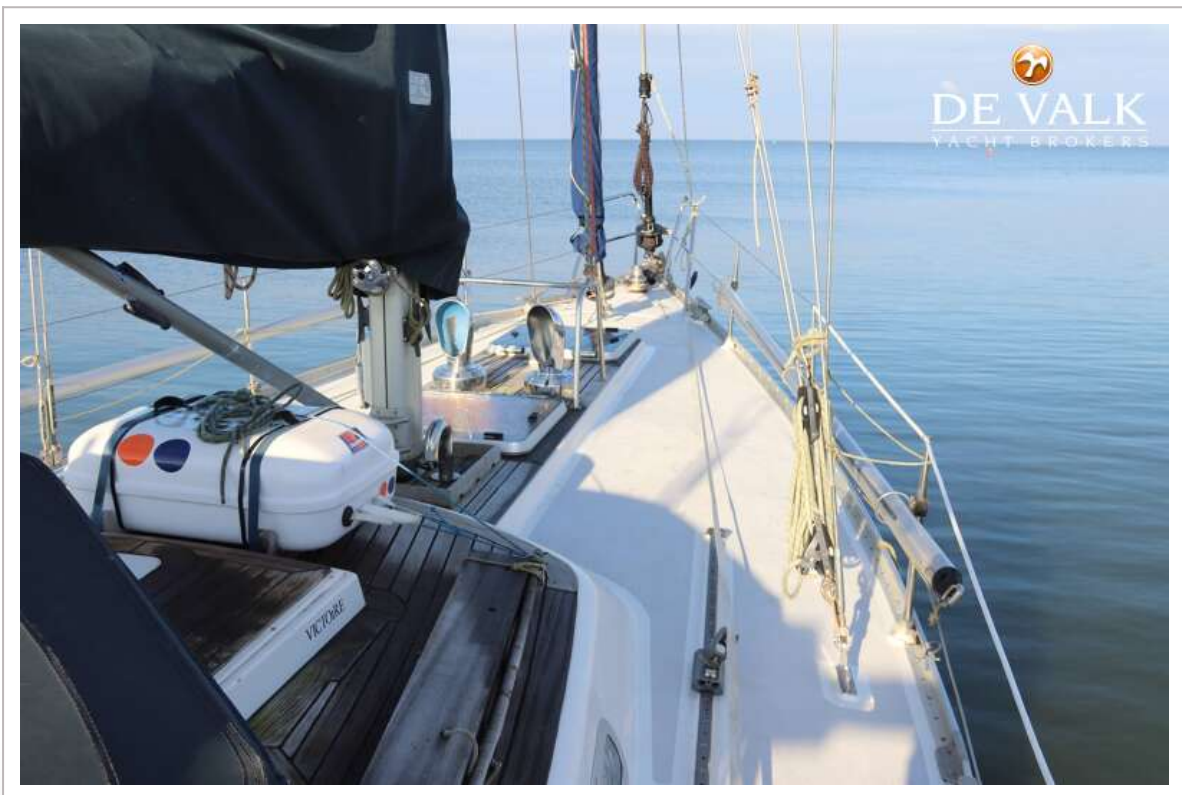
Rigging	sloop-cutter With babystay and backstays
Standing rigging	Dyform new 2016
Brand mast	Proctor
Material mast	aluminium
Spreaders	2 pair
Mainsail	De Vries sails 36,4 m ² + 3 riffen with Lazy Jacks
Mainsail cover	yes
Battcars	Ronstan
Fully battened mainsail	yes
Jib	Cutter jib 19m ² with Rocon De Vries sails



Jib I	De Vries sails 40 m ²
Genoa	Zwaan sails 63m ² with Rocon
Genoa furler	Harken MKIV
Cutter furler	Harken MKII
Gennaker	De Vries sails 120 m ² with snuffer
Trysail	5 m ²
Stormjib	9 m ²
Reefing System	slabreefing 3x
Backstay adjuster	hydraulic Navtec
Boomvang	mechanical Proctor
Primary sheet winch	2x Lewmar ST44
Genoa sheetwinches	2x Lewmar ST62
Halyard winches	2x Lewmar 30 on mast
Reefing winch	1x Lewmar 30 on mast
Spi-pole	aluminium 2x
Isolated backstay	yes



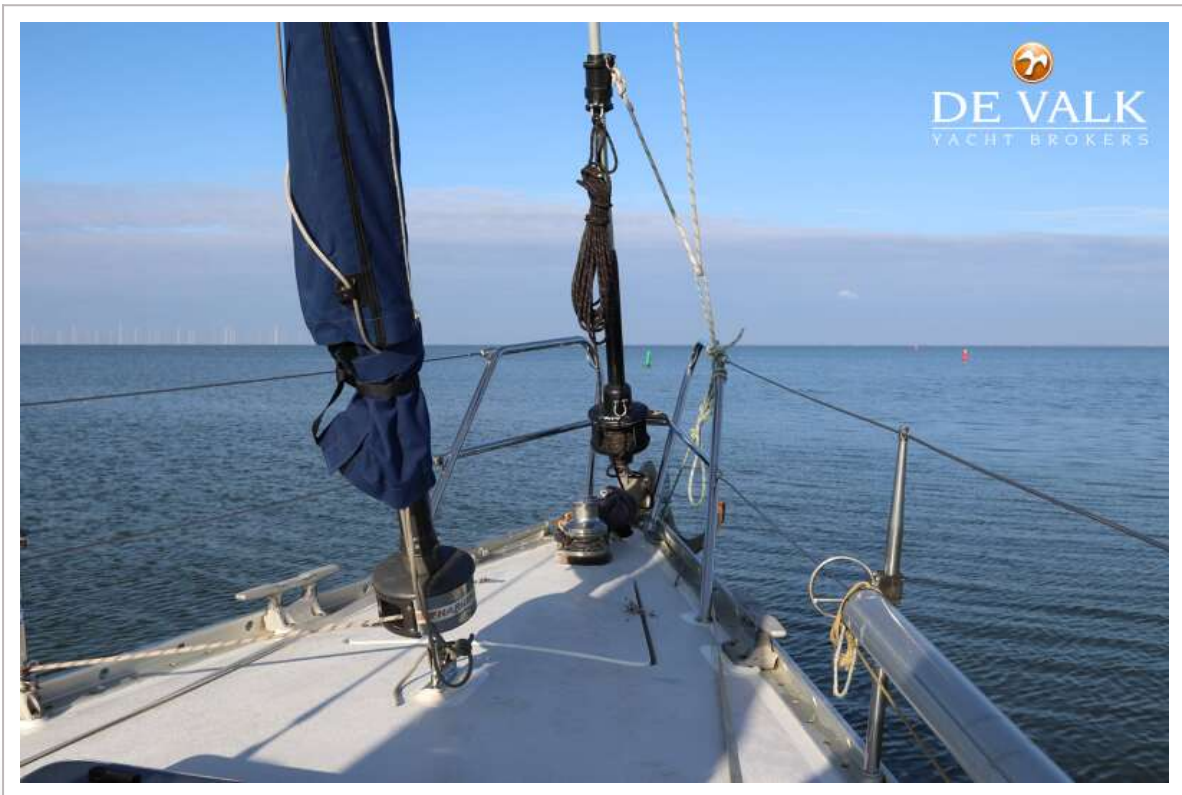
VICTOIRE 1200



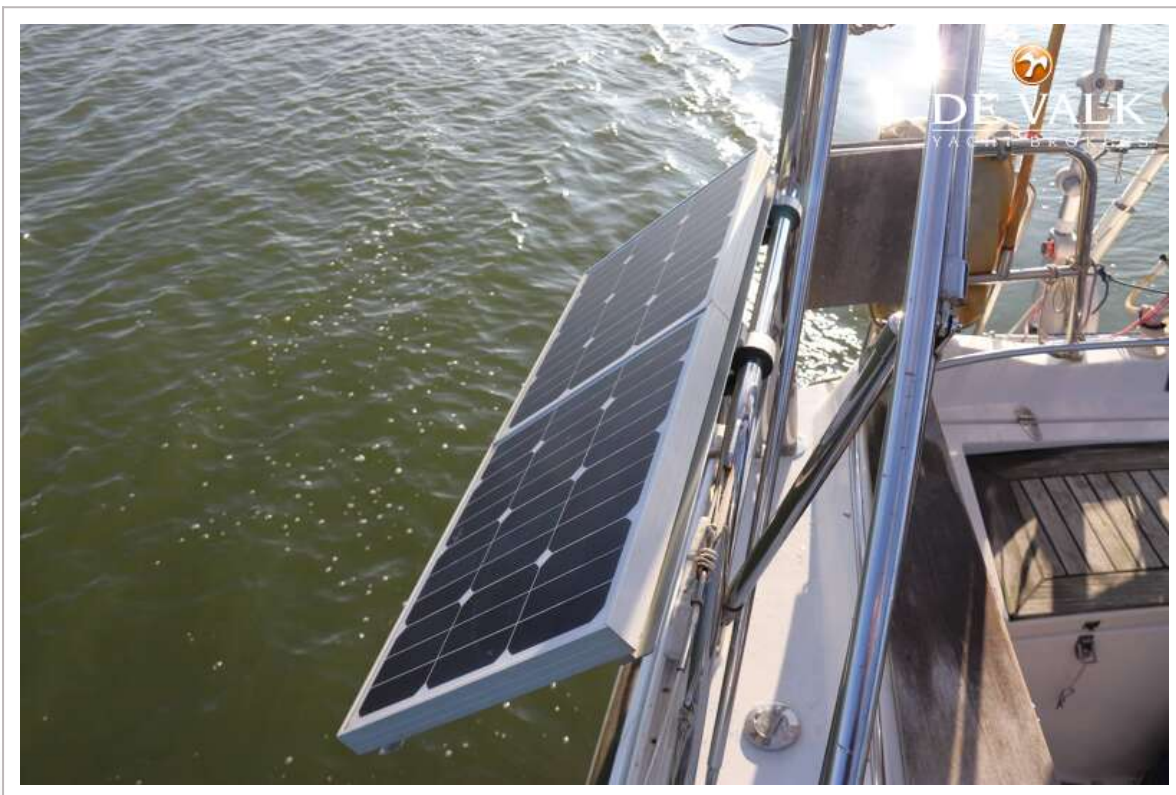
VICTOIRE 1200



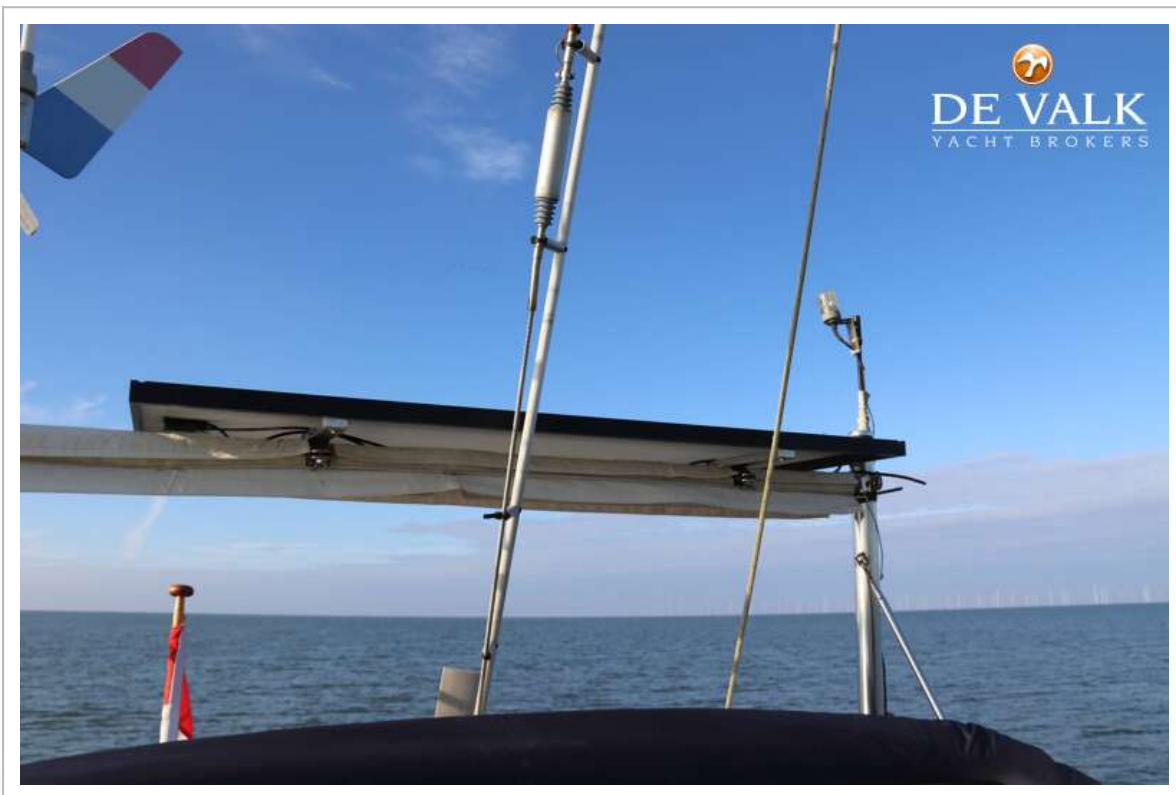
VICTOIRE 1200



VICTOIRE 1200



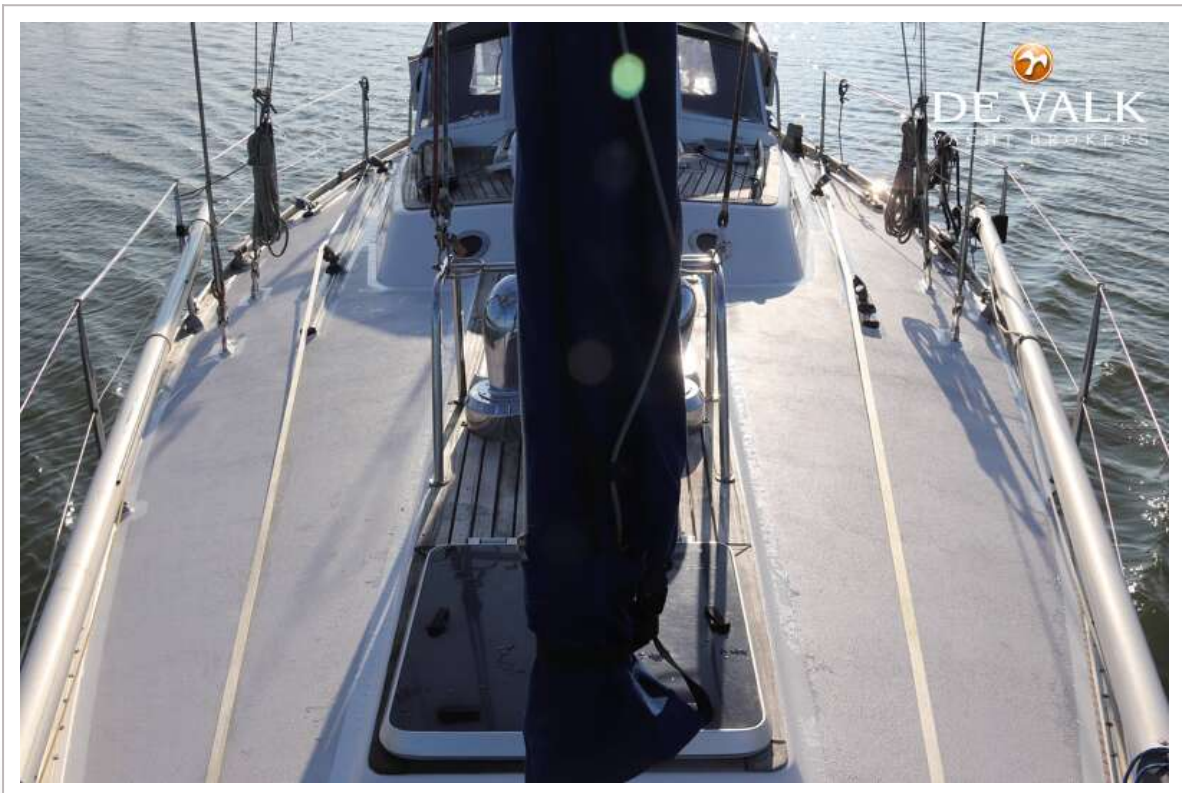
VICTOIRE 1200



VICTOIRE 1200



VICTOIRE 1200



VICTOIRE 1200



VICTOIRE 1200



VICTOIRE 1200



VICTOIRE 1200



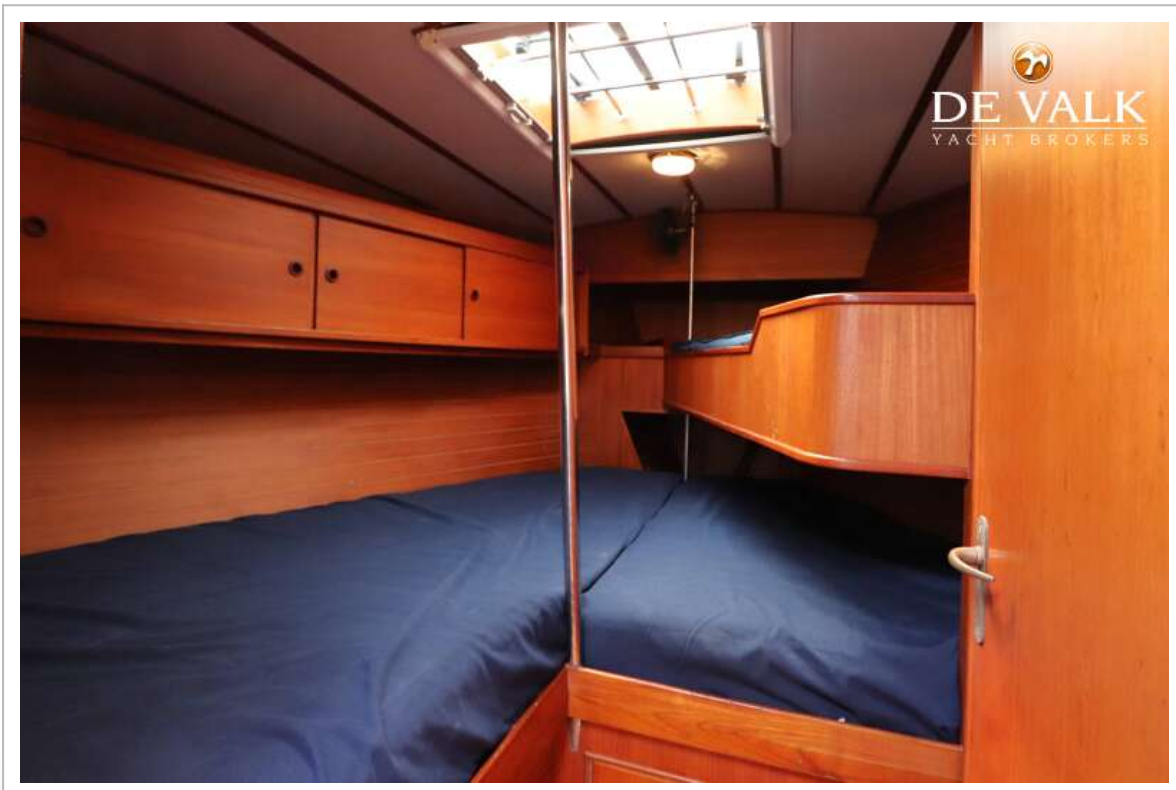
VICTOIRE 1200



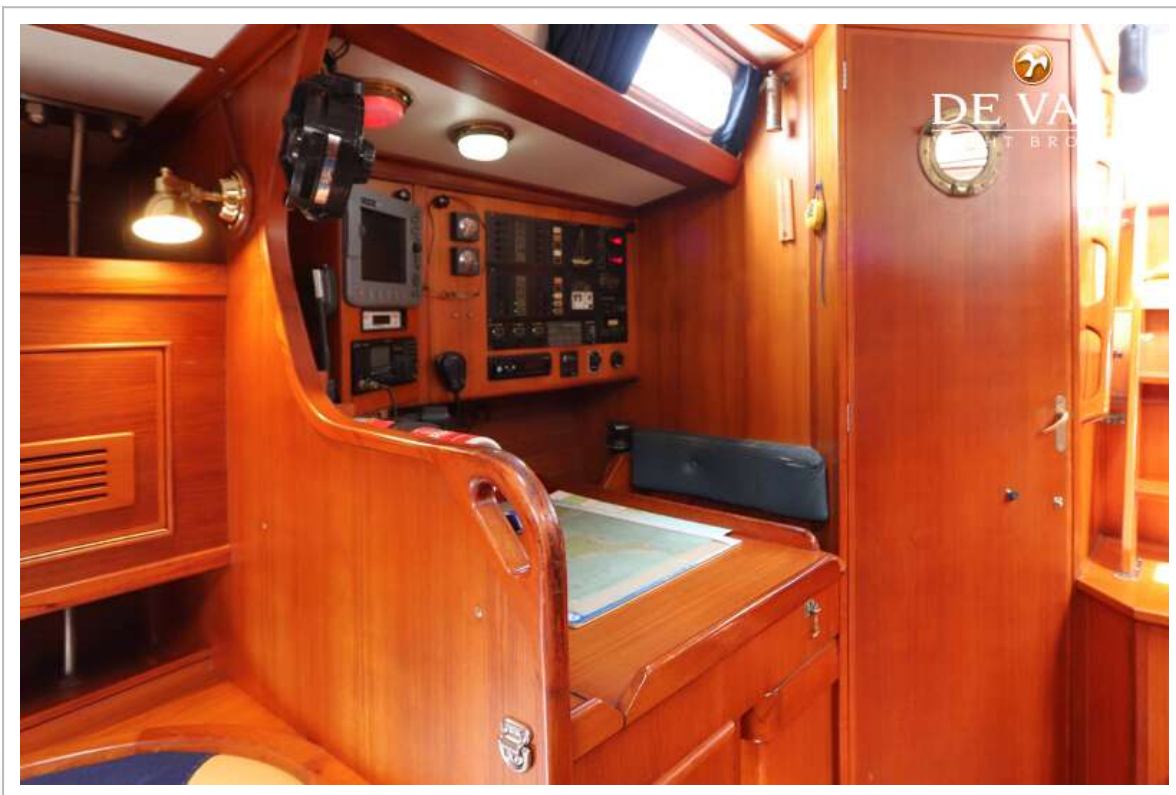
VICTOIRE 1200



VICTOIRE 1200



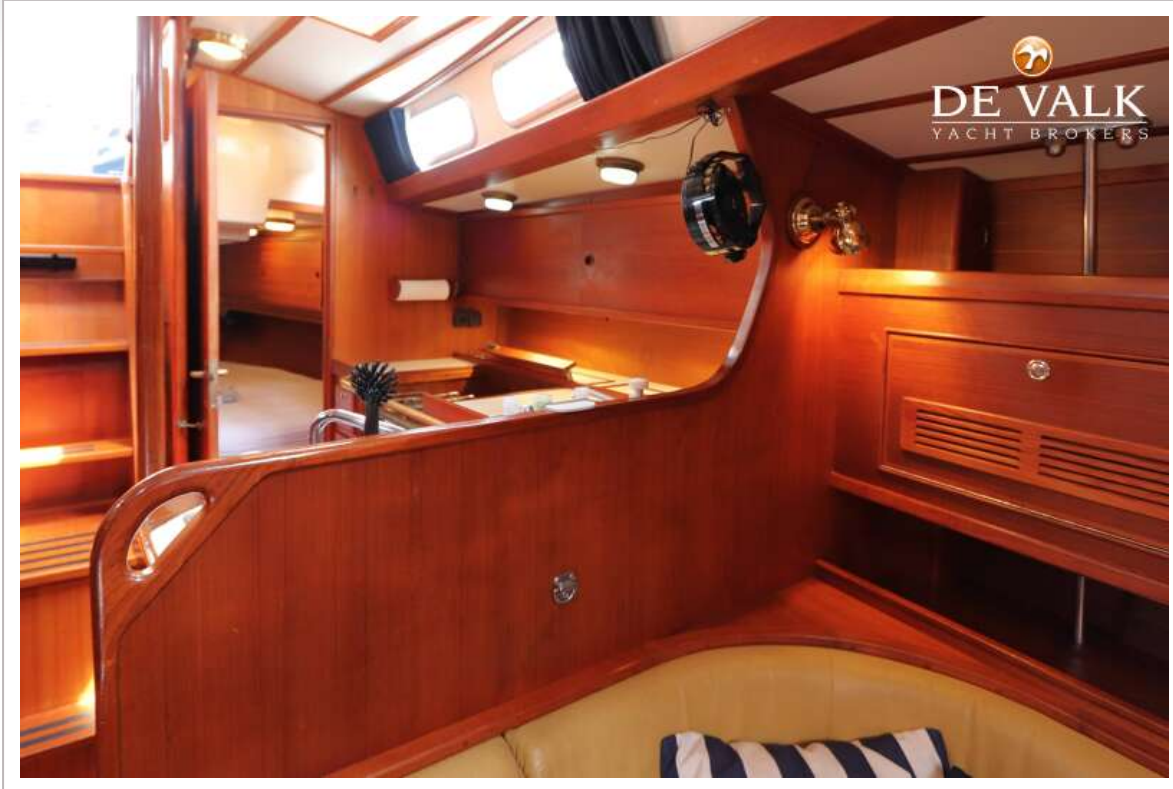
VICTOIRE 1200



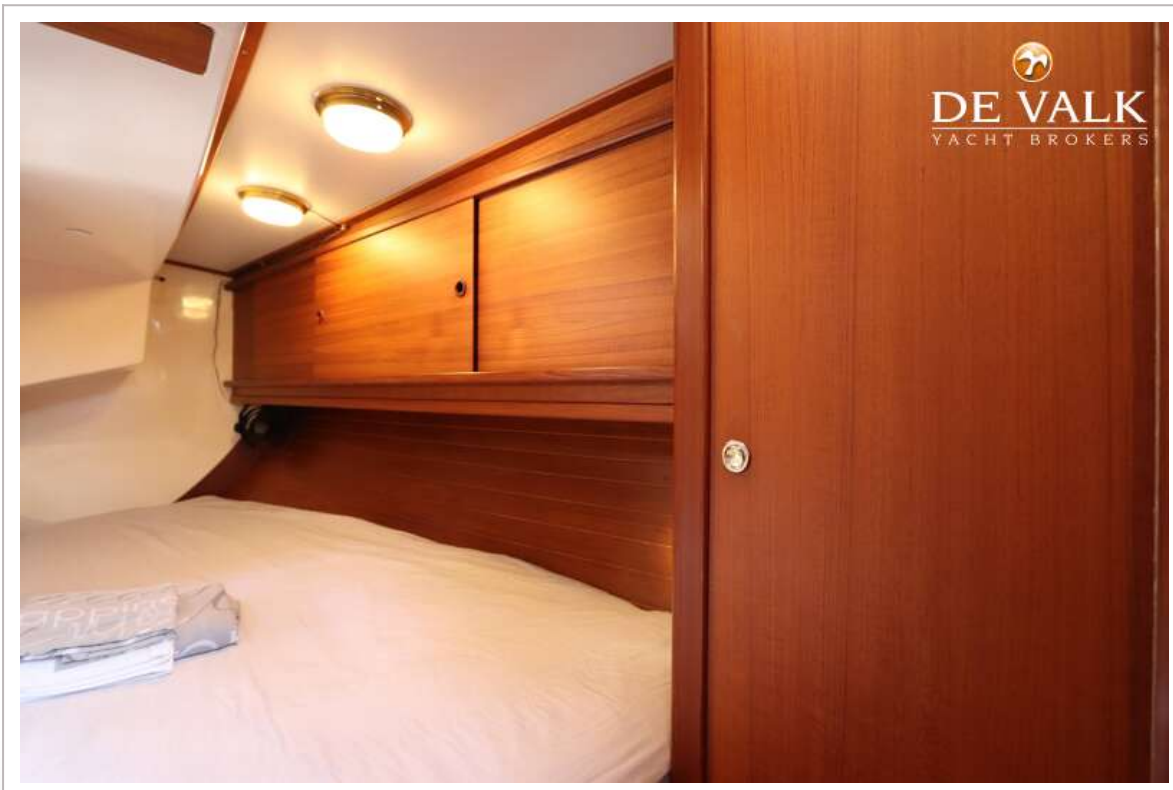
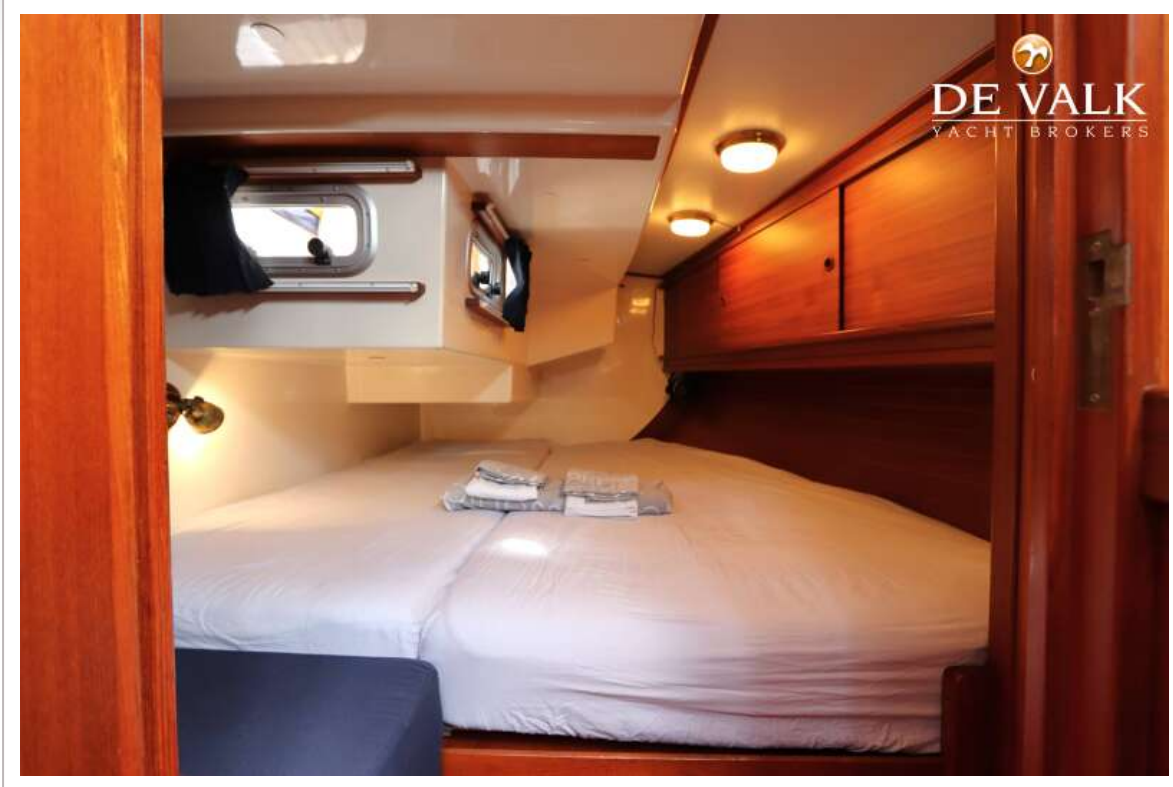
VICTOIRE 1200



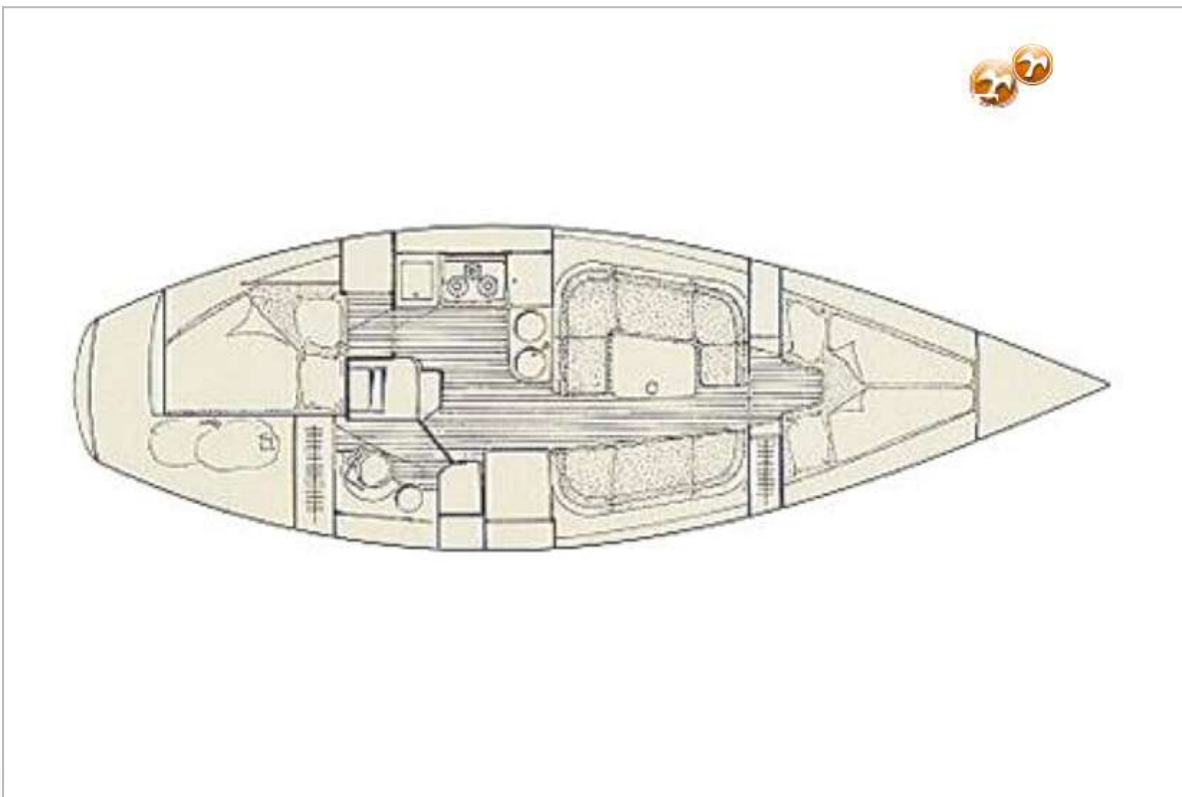
VICTOIRE 1200



VICTOIRE 1200



VICTOIRE 1200



VICTOIRE 1200

