



## NAICAT 32



## BROKER'S COMMENTS

This Nauticat 32 is a well built Finnish pilothouse cruiser of exceptional quality and comfort. Inside steering from the pilothouse saloon will lengthen your sailing season. Outside and inside steering with engine controls, The Nauticat 32 has a furling main and genoa and a new engine from 2016. The superb scandinavian designed interior offers a "room with a view", well proportioned cabins, galley and lots off stowage place. She has good equipped and is waiting for her new owners.

*Hans Visser*

## SPECIFICATIONS

|                     |                        |                |                        |
|---------------------|------------------------|----------------|------------------------|
| <b>Dimensions</b>   | 9.80 x 3.16 x 1.60 (m) | <b>Builder</b> | Siltala Yachts Finland |
| <b>Built</b>        | 1990                   | <b>Cabins</b>  | 2                      |
| <b>Material</b>     | GRP                    | <b>Berths</b>  | 5                      |
| <b>Engine(s)</b>    | 1 x Vetus M-30 diesel  | <b>Hp/Kw</b>   | 30.00 (hp), 22.08 (kw) |
| <b>Asking price</b> | € 79.000 (VAT Paid)    | <b>Lying</b>   | at sales office        |

## CONTACT

|                     |                                             |                  |                       |
|---------------------|---------------------------------------------|------------------|-----------------------|
| <b>Sales office</b> | De Valk Hindeloopen B.V.                    | <b>Telephone</b> | +31 514 52 40 00      |
| <b>Address</b>      | Oosterstrand 1<br>8713 JS Hindeloopen<br>NL | <b>E-mail</b>    | hindeloopen@devalk.nl |

## DISCLAIMER

These particulars are given in good faith as supplied but cannot be guaranteed.



## GENERAL

|                            |                        |
|----------------------------|------------------------|
| Model                      | NAUTICAT 32            |
| Type                       | motorsailer            |
| LOA (m)                    | 9,80                   |
| LWL (m)                    | 8,30                   |
| Beam (m)                   | 3,16                   |
| Draft (m)                  | 1,60                   |
| Air draft (m)              | 14,00                  |
| Headroom (m)               | 1,90                   |
| Year built                 | 1990                   |
| Builder                    | Siltala Yachts Finland |
| Country                    | Finland                |
| Designer                   | Kai Gustafsson         |
| Displacement (t)           | 5,2                    |
| Ballast (tonnes)           | 1,8                    |
| CE norm                    | NA                     |
| Hull material              | GRP                    |
| Hull colour                | white                  |
| Hull shape                 | round-bilged           |
| Keel type                  | fin keel               |
| Superstructure material    | GRP                    |
| Rubbing strake             | rubber                 |
| Deck material              | GRP                    |
| Deck finish                | non-skid moulded in    |
| Superstructure deck finish | non-skid moulded in    |
| Cockpit deck finish        | teak                   |
| Antifouling (year)         | 2024                   |
| Dorades                    | 2 x New 2024           |
| Window frame               | aluminium              |
| Window material            | tempered glass         |
| Deckhatch                  | 4 x incl               |



|                              |                           |
|------------------------------|---------------------------|
| Portholes                    | 2 x                       |
| Fuel tank (litre)            | polyethylene 250          |
| Level indicator (fuel tank)  | yes                       |
| Freshwater tank (litre)      | polyethylene 2 x 250      |
| Level indicator (freshwater) | yes                       |
| Blackwater tank (litre)      | stainless steel Approx 60 |
| Blackwater tank extraction   | deck extraction + uw line |
| Wheel steering               | hydraulic                 |
| Inside helm position         | hydraulic                 |
| Outside helm position        | hydraulic                 |
| Emergency tiller             | yes                       |

## ACCOMMODATION

|                         |                                        |
|-------------------------|----------------------------------------|
| Cabins                  | 2                                      |
| Berths                  | 5                                      |
| Interior                | teak Classic                           |
| Layout                  | Classic                                |
| Floor                   | parquet                                |
| Open cockpit            | yes                                    |
| Pilot house/deck saloon | yes                                    |
| Headroom saloon (m)     | 1,88                                   |
| Heating                 | diesel ducted hot air Eberspacher D3Lc |
| Navigation center       | yes                                    |
| Chart table             | yes                                    |
| Aft Cabin               | yes                                    |
| Opening door to cockpit | yes                                    |
| Galley                  | yes                                    |
| Countertop              | plastic                                |
| Sink                    | stainless steel                        |
| Cooker                  | calor gas Eno 3 Burner                 |
| Oven                    | Integrated                             |



|                       |                        |
|-----------------------|------------------------|
| Gas alarm             | Needs new battery      |
| Fridge                | New compressor 2022/23 |
| Hot water system      | 220V/engine/heating    |
| Water pressure system | yes                    |
| Owners cabin          | v-bed Headroom 1,82 M. |
| Bed length (m)        | 2                      |
| Wardrobe              | hanging and shelves    |
| Bathroom              | separate               |
| Toilet                | separate               |
| Toilet system         | electric               |
| Wash basin            | in the bathroom        |
| Shower                | separate               |
| Guest cabin 1         | double bed Aft         |
| Bed length (m)        | 2                      |
| Wardrobe              | hanging and shelves    |
| Bathroom              | shared                 |
| Toilet                | shared                 |
| Shower                | shared                 |

## MACHINERY

|                       |                           |
|-----------------------|---------------------------|
| No of engines         | 1                         |
| Make                  | Vetus                     |
| Type                  | M-30                      |
| HP                    | 30                        |
| kW                    | 22.08                     |
| Fuel                  | diesel                    |
| Year installed        | 2016                      |
| Consumption (l/hr)    | 1,5                       |
| Engine hours          | 200                       |
| Engine cooling system | freshwater heat exchanger |
| Drive                 | shaft                     |



|                          |                         |
|--------------------------|-------------------------|
| Shaft seal               | yes                     |
| Engine controls          | bowden cable 2 stations |
| Gearbox                  | mechanical              |
| Exhaust                  | watercooled             |
| Propeller type           | folding                 |
| Propeller blades         | 3                       |
| Propeller shaft material | stainless steel         |
| Shaft lubrication        | grease                  |
| Manual bilge pump        | yes                     |
| Electric bilge pump      | yes                     |
| Electrical installation  | 12 V DC and 220 V AC    |
| Batteries                | 270 Ah total            |
| Start battery            | 1 x 12 V 70 AH          |
| Service battery          | 1 x 12 V 220 AH         |
| Battery monitor          | Voltmeter               |
| Battery charger          | 12 V 25 Ah              |
| Solar panel              | Single panel            |
| Shorepower               | with cable              |

## NAVIGATION

|                   |                       |
|-------------------|-----------------------|
| Compass           | yes                   |
| Depth sounder     | Clipper 2 displays    |
| Log               | Clipper 2 displays    |
| Windset           | Clipper 2 displays    |
| VHF handheld      | yes                   |
| Autopilot         | Hydraulic Neco marine |
| Plotter/GPS       | Raymarine A50 d       |
| Navigation lights | yes                   |

## EQUIPMENT

|           |     |
|-----------|-----|
| Sprayhood | yes |
|-----------|-----|



|                          |                             |
|--------------------------|-----------------------------|
| <b>Dodger</b>            | Never used by current owner |
| <b>Cockpit table</b>     | yes                         |
| <b>Bathing platform</b>  | yes                         |
| <b>Boarding ladder</b>   | aluminum                    |
| <b>Bow ladder</b>        | yes                         |
| <b>Anchor</b>            | Bruce                       |
| <b>Anchor 2</b>          | Bruce                       |
| <b>Windlass aft</b>      | electrical With remote      |
| <b>Sea railing</b>       | stainless steel             |
| <b>Pushpit</b>           | yes                         |
| <b>Pulpit</b>            | yes                         |
| <b>Safety harness</b>    | yes                         |
| <b>Lifebuoy</b>          | yes                         |
| <b>Danbuoy</b>           | yes                         |
| <b>Horn</b>              | electric                    |
| <b>Radar reflector</b>   | yes                         |
| <b>Fenders</b>           | yes                         |
| <b>Mooring lines</b>     | yes                         |
| <b>Spare parts</b>       | yes                         |
| <b>Radio-cd player</b>   | yes                         |
| <b>Speakers in salon</b> | yes                         |
| <b>Fire extinguisher</b> | 2 x                         |

## RIGGING

|                         |                  |
|-------------------------|------------------|
| <b>Rigging</b>          | sloop            |
| <b>Standing rigging</b> | wire             |
| <b>Brand mast</b>       | Seldén           |
| <b>Material mast</b>    | aluminium        |
| <b>Spreaders</b>        | 2 sets swept aft |
| <b>Mainsail</b>         | yes              |
| <b>Stoway mast</b>      | yes              |



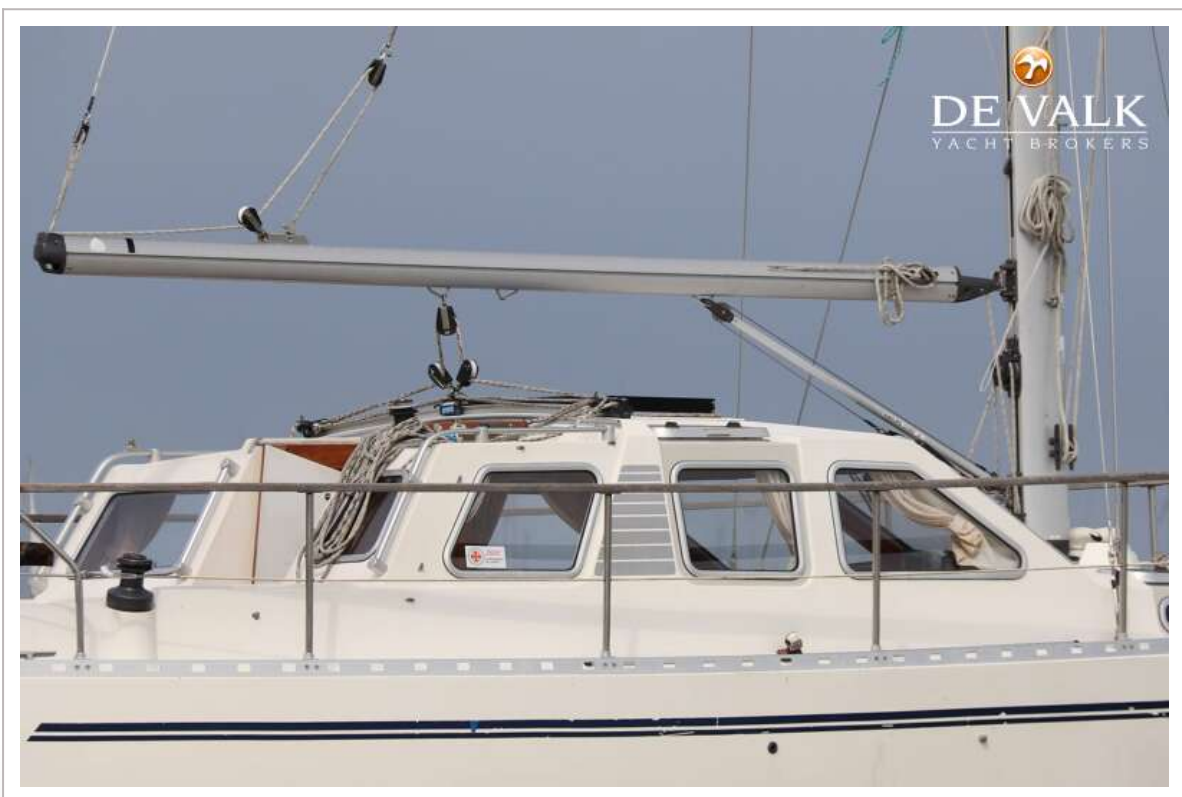
|                         |               |
|-------------------------|---------------|
| Genoa                   | yes           |
| Genoa furler            | yes           |
| Spinnaker               | With bowroler |
| Removable innerforestay | Babystay      |
| Backstay adjuster       | tackle        |
| Boomvang                | gasspring     |
| Genoa sheetwinches      | yes           |
| Halyard winches         | yes           |
| Spi-pole                | yes           |

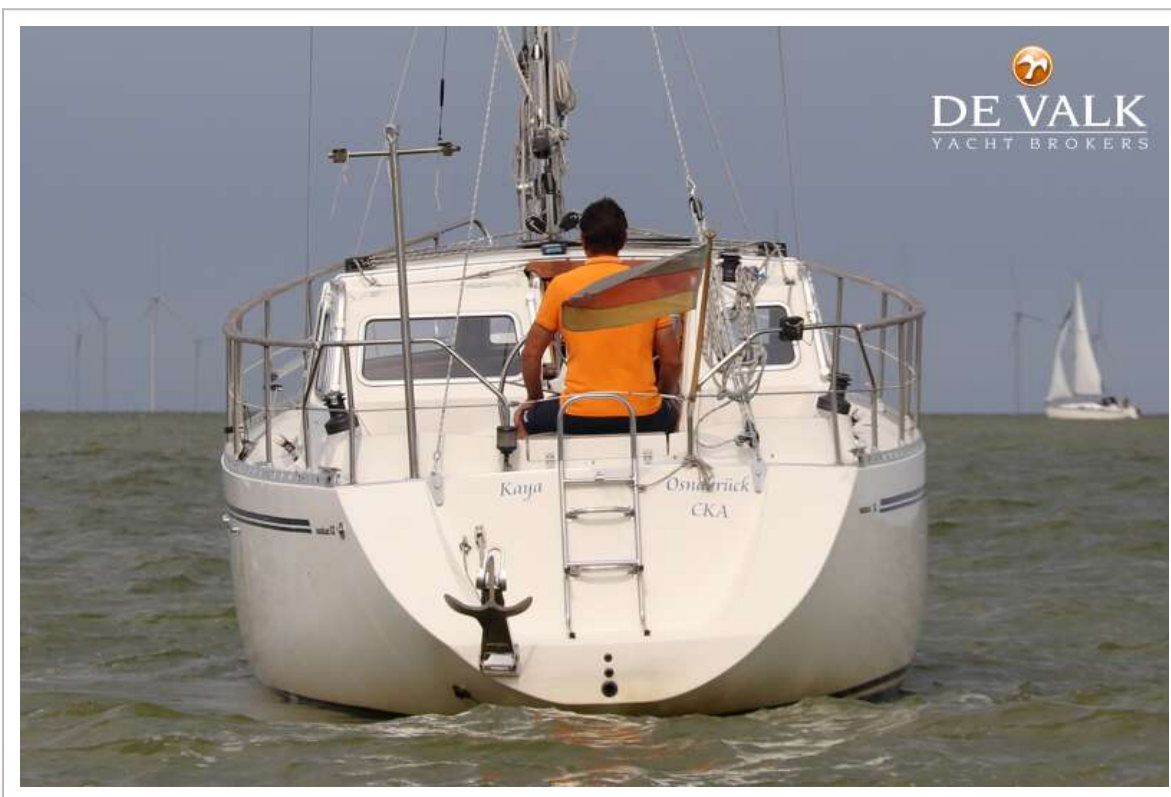












# NAUTICAT 32





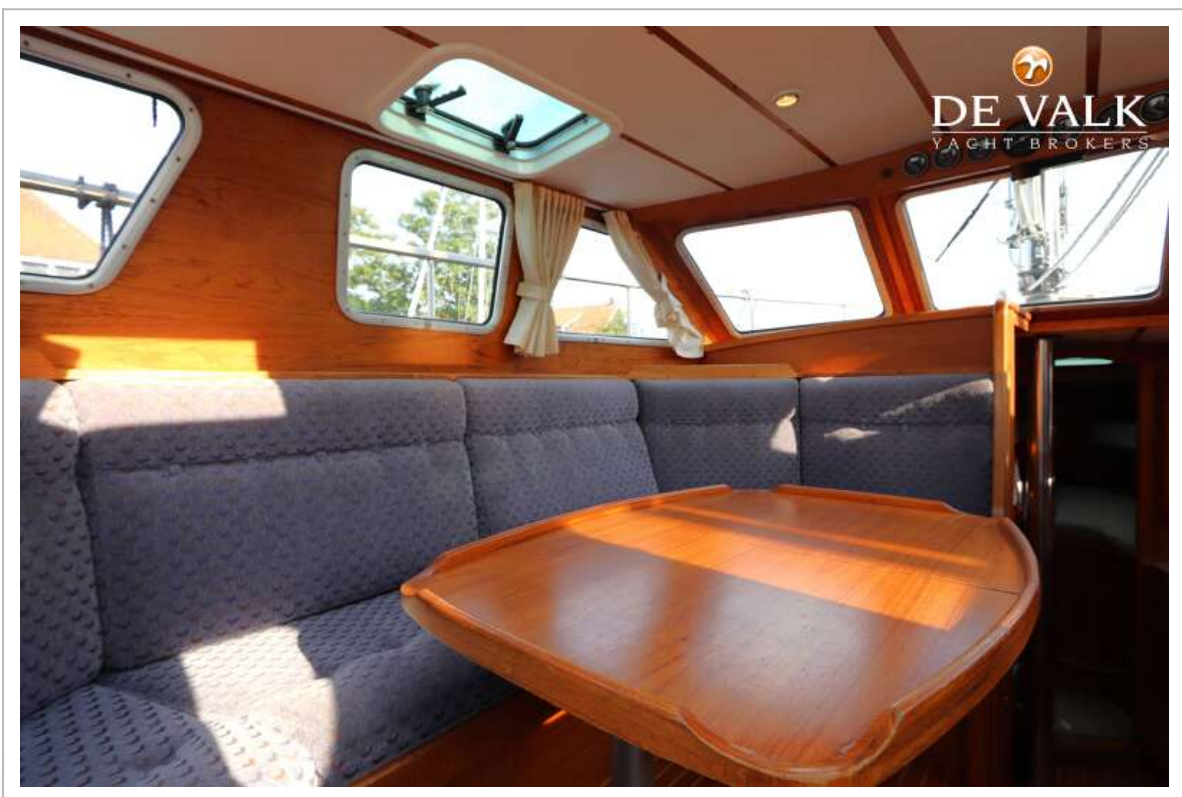
# NAUTICAT 32







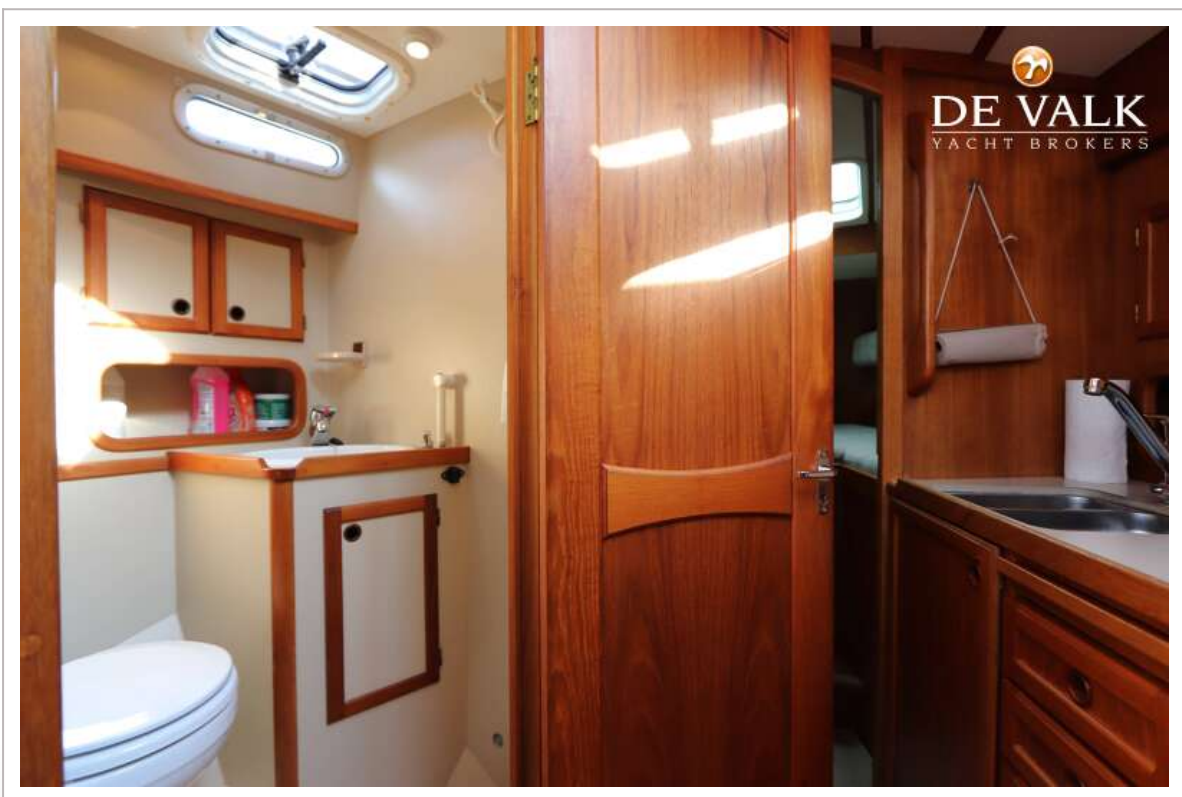
# NAUTICAT 32

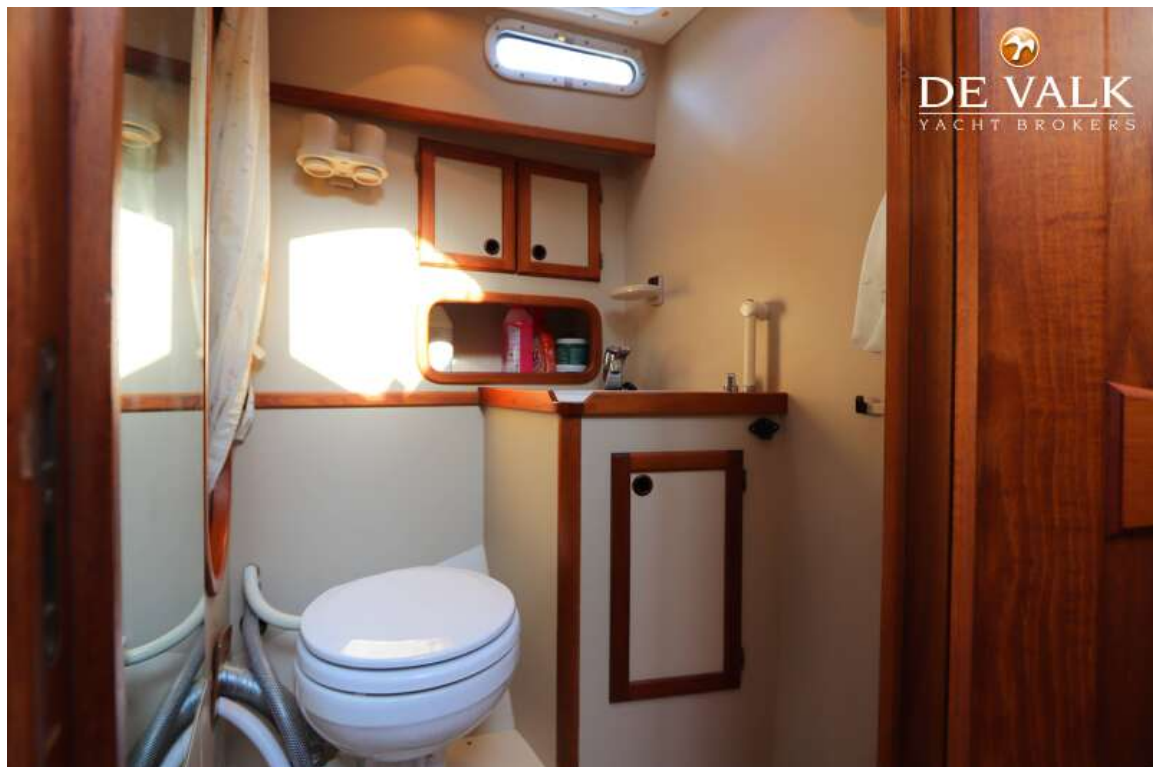






# NAUTICAT 32

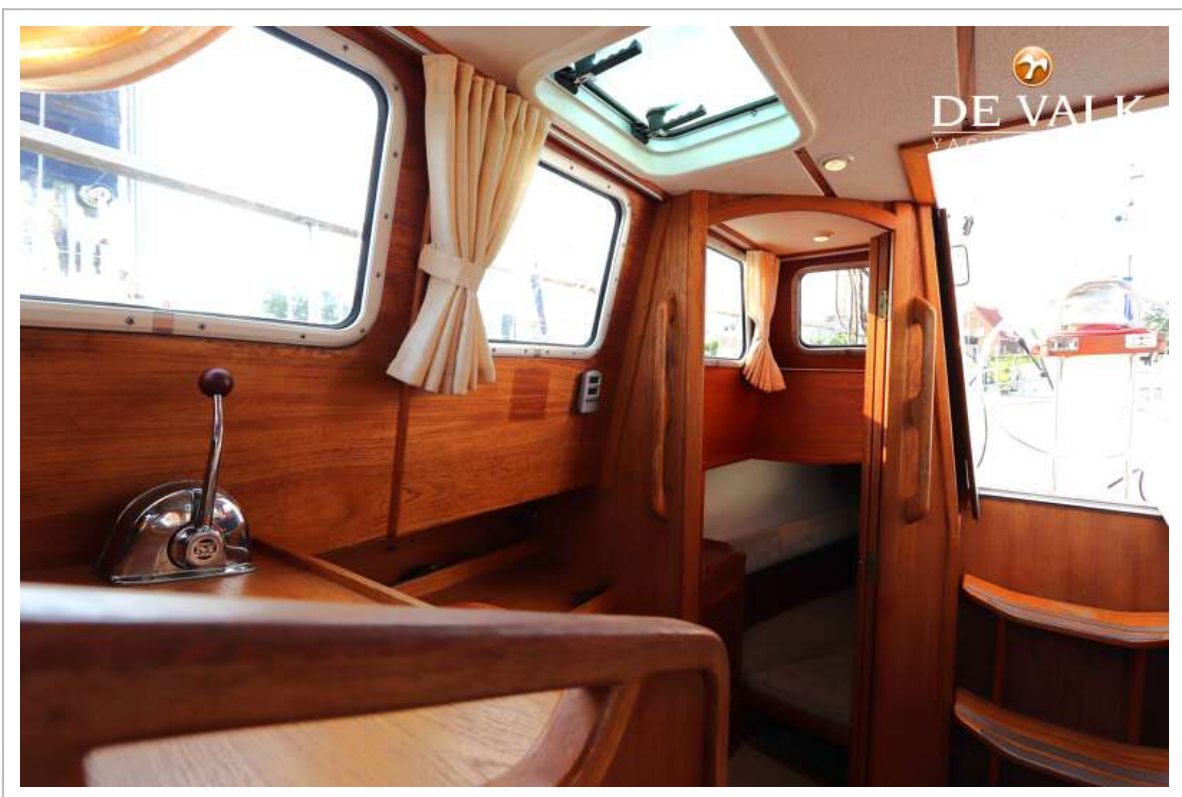




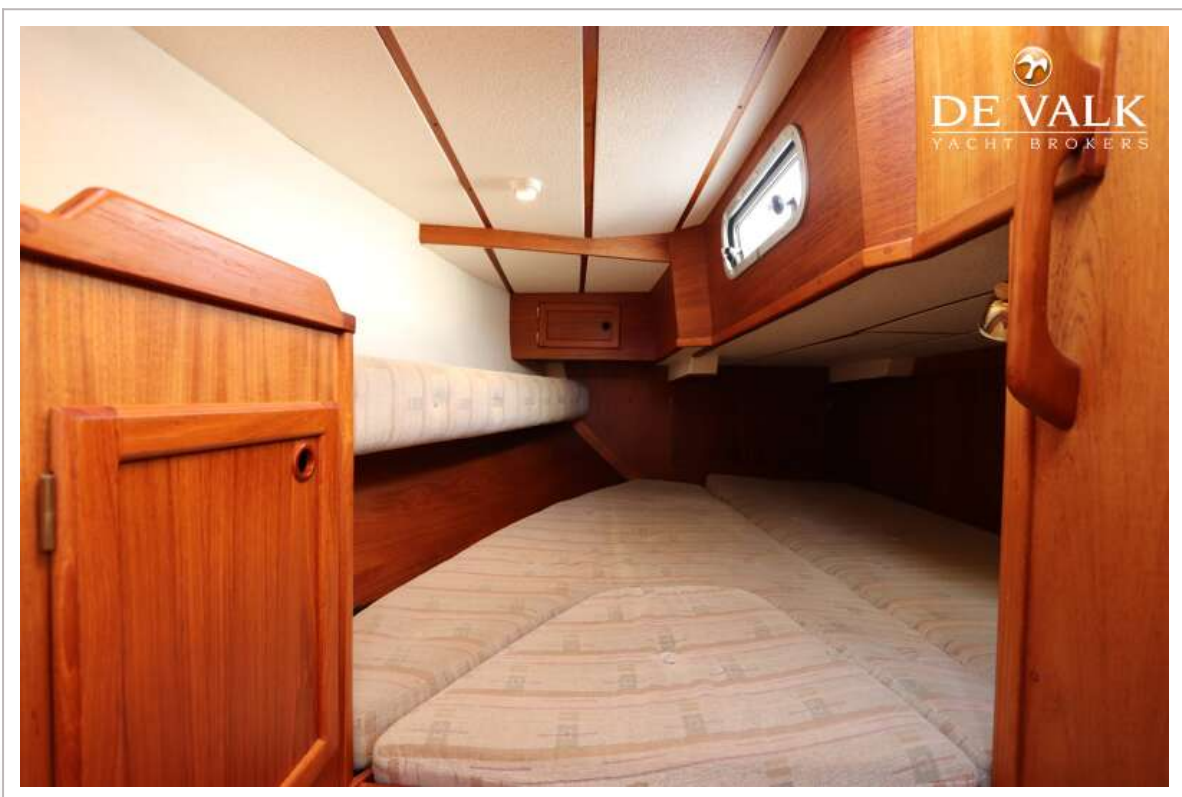
# NAUTICAT 32



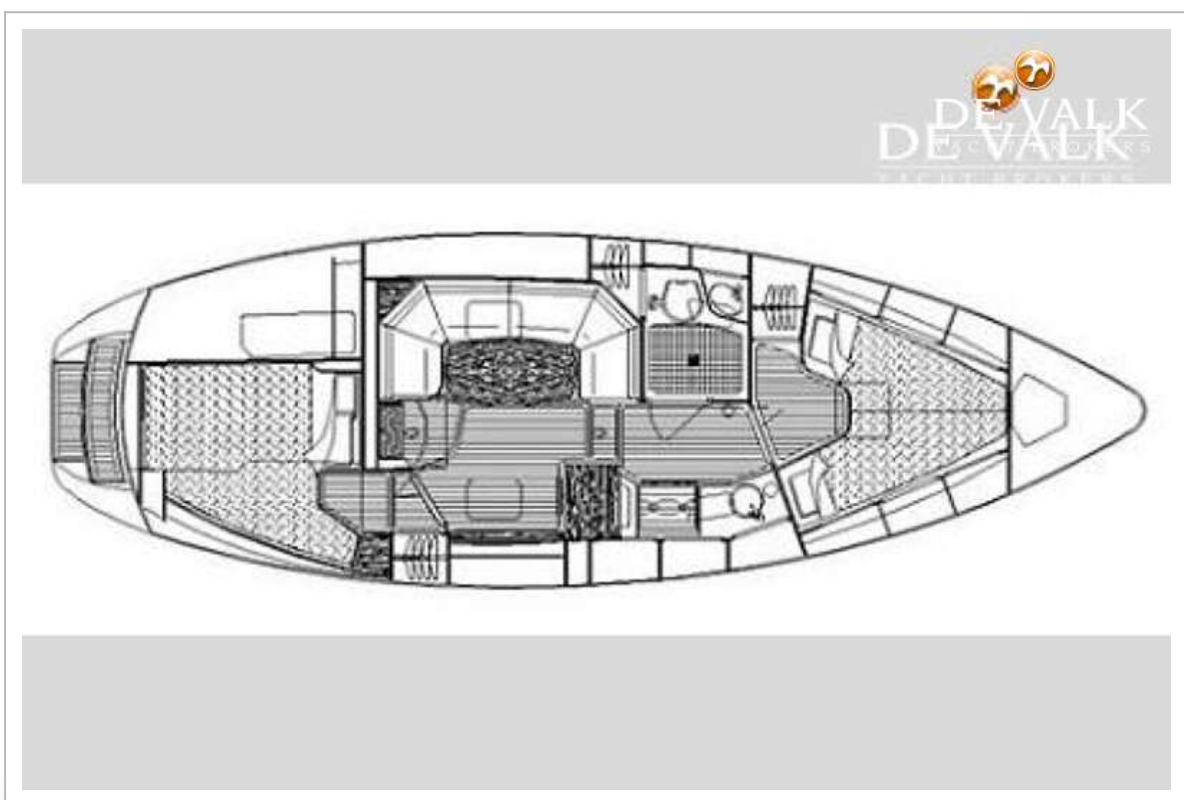
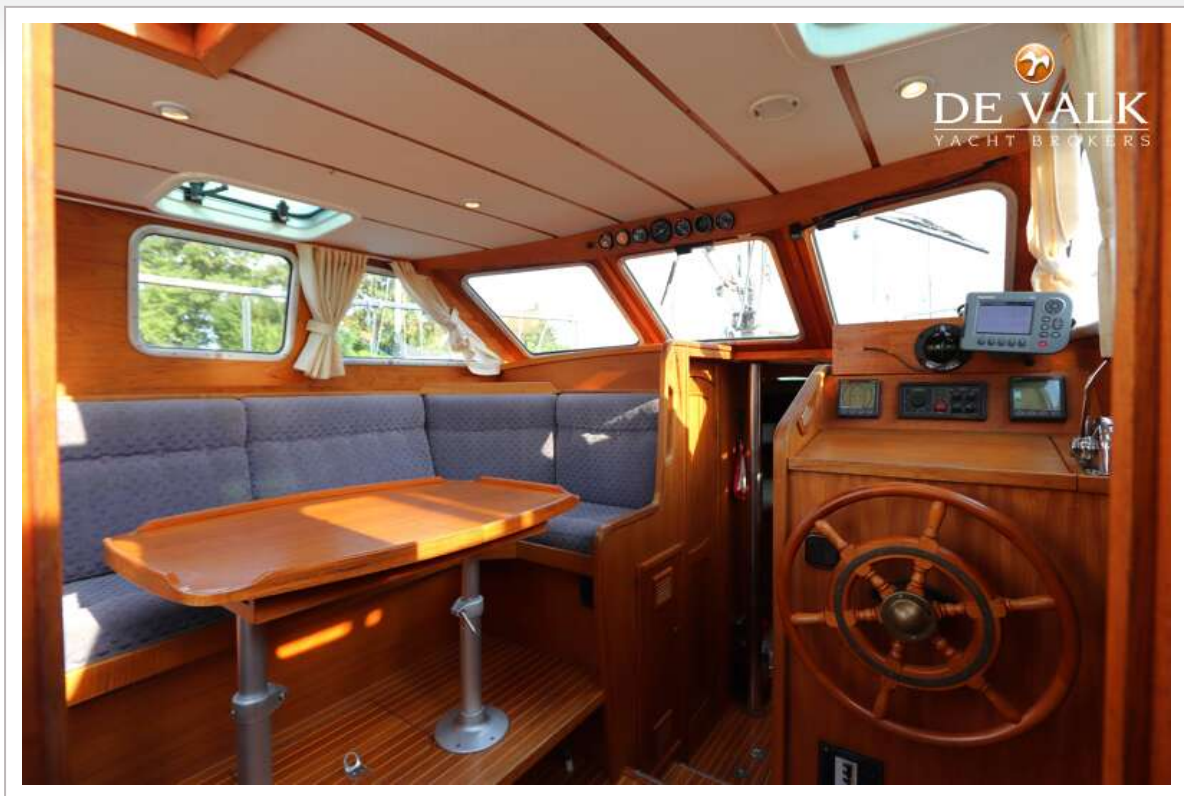
# NAUTICAT 32



# NAUTICAT 32



# NAUTICAT 32



# NAUTICAT 32

