



DE VALK
YACHT BROKERS



DEHLER 47



DE VALK
YACHT BROKERS

BROKER'S COMMENTS

Unique opportunity to obtain a very nice Dehler 47 from the first (and only) owner. Only used for family sailing, this fast cruising yacht took the owner couple to various destinations in Europe in great comfort, speed and ease of handling. The owner had the well known Furlerboom and new mainsail installed and it took the handling of this Dehler to the next level. Imagine setting, lowering or reefing all under one minute. And from the safety in the cockpit. She offers a lot including aircon, heating, hydraulic bathing platform etc. This is a Dehler 47 you need to see before you look elsewhere.

Marc Weijenberg

SPECIFICATIONS

Dimensions	14.21 x 4.21 x 2.40 (m)	Builder	Dehler Yachtbau GmbH
Built	2006	Cabins	3
Material	GRP	Berths	6
Engine(s)	1 x Volvo Penta D2-75 diesel	Hp/Kw	75.00 (hp), 55.20 (kw)
Asking price	sold (VAT)	Lying	The Netherlands

CONTACT

Sales office	De Valk Thuishaven	Telephone	+31 35 5829042
Address	Peperstraat 7 1411 PX Naarden NL	E-mail	thuishaven@devalk.nl

DISCLAIMER

These particulars are given in good faith as supplied but cannot be guaranteed.



GENERAL

Model	DEHLER 47
Type	sailing yacht
LOA (m)	14,21
LWL (m)	12,60
Beam (m)	4,21
Draft (m)	2,40
Air draft (m)	24,00
Headroom (m)	1,95
Year built	2006
Builder	Dehler Yachtbau GmbH
Country	Germany
Designer	Judel & Vrolijk
Displacement (t)	13,5
Ballast (tonnes)	cast iron and lead 2,4
CE norm	A
Hull material	GRP
Hull colour	white
Hull shape	round-bilged
Keel type	fin keel with bulb
Superstructure material	GRP
Rubbing strake	yes
Deck material	GRP
Deck finish	teak
Cockpit deck finish	teak
Dorades	yes
Window frame	aluminium
Window material	polycarbonate
Deckhatch	5 x
Portholes	10 x
Fuel tank (litre)	stainless steel 2 x 140



Freshwater tank (litre)	stainless steel 2 x 220
Blackwater tank (litre)	stainless steel 2 x 60
Blackwater tank extraction	deck extraction + uw line
Wheel steering	cable steering Lewmar
Emergency tiller	yes
Extra info	Extra padeyes are mounted while being constructed with aluminium reinforcements. Extra attention was given to the smooth finish of the transom construction.
Extra info	Self-adjusting rudder needle bearings. Lots of portholes and windows can be opened for extra ventilation. All opening windows/portholes have flyscreens.

ACCOMMODATION

Cabins	3
Berths	6
Interior	cherry
Layout	3 cabins, 2 bathroom/heads, salon and galley
Floor	teak and holly Woodprint
Saloon	with Alcantara upholstery
Headroom saloon (m)	2,00
Heating	diesel ducted hot air Webasto Airtop 5000ST
Air-conditioning	reverse cycle airco 2 x Webasto Blue Cool Classic (7000BTU)
Chart table	With extendable support for safe-seating while sailing on a heel.
Aft Cabin	2 x
Dinette	with fold-open table
Galley	L-shape
Countertop	Corian
Sink	stainless steel 2 x
Cooker	calor gas Force 10 (3 burner)
Oven	Force 10 oven + grill
Microwave	220v (via shore power or inverter) Sharp (220v)
Fridge	Waeco 80 ltrs



Freezer	toploader (with watercooled compressor) Isotherm
Hot water system	220V + engine Rheinstrom 40 ltrs (stainless)
Water pressure system	electrical
Manual and/or foot pump	seawater tap (footpump) + watertap watermaker
Owners cabin	double bed
Bed length (m)	2,05 x 1,45 mtr, headroom 1,93 mtr
Wardrobe	hanging/drawers/shelves
Bathroom	en suite I
Toilet	en suite
Toilet system	manual
Wash basin	in the bathroom
Shower	en suite
Guest cabin 1	double bed
Bed length (m)	2,10 x 1,50 mtr, headroom 1,87 mtr
Wardrobe	hanging and shelves
Bathroom	shared II
Toilet	shared
Toilet system	manual
Wash basin	in the bathroom
Shower	shared
Guest cabin 2	double bed
Bed length (m)	2,10 x 1,50 mtr, headroom 1,87 mtr
Wardrobe	hanging and shelves
Washing machine	Baby Nova 1000 (can be run on shorepower and inverter)
Extra info	All mattresses are in Comfort Bulltex with lee-cloths. All sleeping cabins have heating (including bathrooms) and airconditioning.
Extra info	Remote electric Trumatic remote calor gas shutt-off valve

MACHINERY

No of engines	1
Make	Volvo Penta



Type	D2-75
HP	75
kW	55.20
Fuel	diesel
Year installed	2006
Maximum speed (kn)	8,5
Cruising speed (kn)	7
Consumption (l/hr)	4
Engine cooling system	freshwater heat exchanger
Drive	sail-drive
Saildrive seal	(2017)
Engine controls	bowden cable
Gearbox	mechanical Volvo Penta MS-Saildrive
Exhaust	watercooled
Propeller type	folding
Propeller blades	3
Shaft lubrication	oilbath
Manual bilge pump	yes
Electric bilge pump	yes
Electrical installation	While being built extra attention & supervision was given to the electrical installations. 24v/220v
Start battery	12v (2022)
Service battery	Lithium Ion 24/26v plus BMS
Battery monitor	Victron plus PC
Battery charger	24v/20amp for Lithium pack
Battery charger/inverter	Victron Plus 24v/3000watt/70amp
Shorepower	with cable
Insulation transformer	Zinc Saver II 30amp
Watermaker	Schenker Modular 30M (24v 35 ltr/hr (2006, update/overhaul 2016)
Extra info	Twin alternators for start battery and 24v system, 4 x DC/DC converters (24v->12v)



Extra info

With the twin alternator setup and enhanced batterypack there is no need for a generator. All genset connections and base are in place should you want to install one.

NAVIGATION

Compass

Suunto

Electric compass

via autopilot

Multi control display

Raymarine ST60 plus Raymarine ST60 Multigraphic display

Depth sounder

Raymarine ST60

Log

Raymarine ST60

Windset

Raymarine ST60

VHF

Raymarine 240E DSC Class D + cockpit control unit and extra speakers

Autopilot

Raymarine ST6001-Smart pilot S2 plus remote and extra read-out function.

Rudder angle indicator

via the autopilot

Radar

Raymarine 4kW

GPS

Raymarine Raystar 125

Plotter

Raymarine E80

Navtex

ICS 6+

PC connection

Raytech RNS software for PC repeater radar and navigation data

Electronic chart(s)

yes

Navigation lights

yes

Extra info

RR antenna system with DSC-Panama distribution box for VHF-DVB-T TV, T-DAB digital radio and VHF. MOB easy access button

EQUIPMENT

Sprayhood

(2023)

Bimini

full bimini with stainless frames

Cockpit cushions

yes



Cockpit table	teak with stainless steel frame
Bathing platform	hydraulic operated fold-down platform (wired and wireless control)
Boarding ladder	stainless steel
Transom door	yes
Deck shower	hot & cold water
Anchor	Delta (stainless)
Anchor chain	60 mtr (stainless)
Windlass	electrical Lewmar
Deck wash	yes
Dinghy	inflatable
Outboard	Yamaha 4 hp (4-stroke)
Outboard support	yes
Davits	1 x outboard-lift
Sea railing	wire
Railing side opening gates	2 x
Pushpit	+ 2 pensionado seats
Pulpit	yes
Life raft	valise (or bag)
Life raft (pers)	6
Last life raft survey	needs service
Lifebuoy	yes
Radar reflector	Firdell 210-7
Fenders	yes
Mooring lines	yes
Spare parts	yes
TV	Phillips
Radio-cd player	yes
Cockpit speakers	Bose 131 (water resistant)
Speakers in salon	Bose + subwoofer
Clock - barometer	yes
Extra info	small scuba-pack for inspection dives



RIGGING

Rigging	fractional
Standing rigging	Dyform (2006)
Brand mast	Sparcraft
Material mast	aluminium
Spreaders	3 x set
Keel stepped mast	yes
Fully battened mainsail	Van Vliet Sails (2017)
Furling boom	Furlerboom Denmark (2017) to set and lower the mainsail in less than one minute.
Genoa	Van Vliet Sails (2017)
Genoa furler	Furlex 400S
Gennaker	Dolphin Sails with rocon
Reefing System	quick-one-line-reefing
Backstay adjuster	hydraulic Holmatro
Boomvang	Furlerboom kicker (2017)
Primary sheet winch	2 x Harken (2 speed) HB46.2ST
Genoa sheetwinches	2 x Harken (2 speed) HB60.2ST
Halyard winches	2 x Harken (2 speed) HB48.2ST electric
Spi-pole	carbon
Extra info	All Tylaska shackles, Harken blocks/hardware and Dyneema running rigging.



DEHLER 47



DEHLER 47



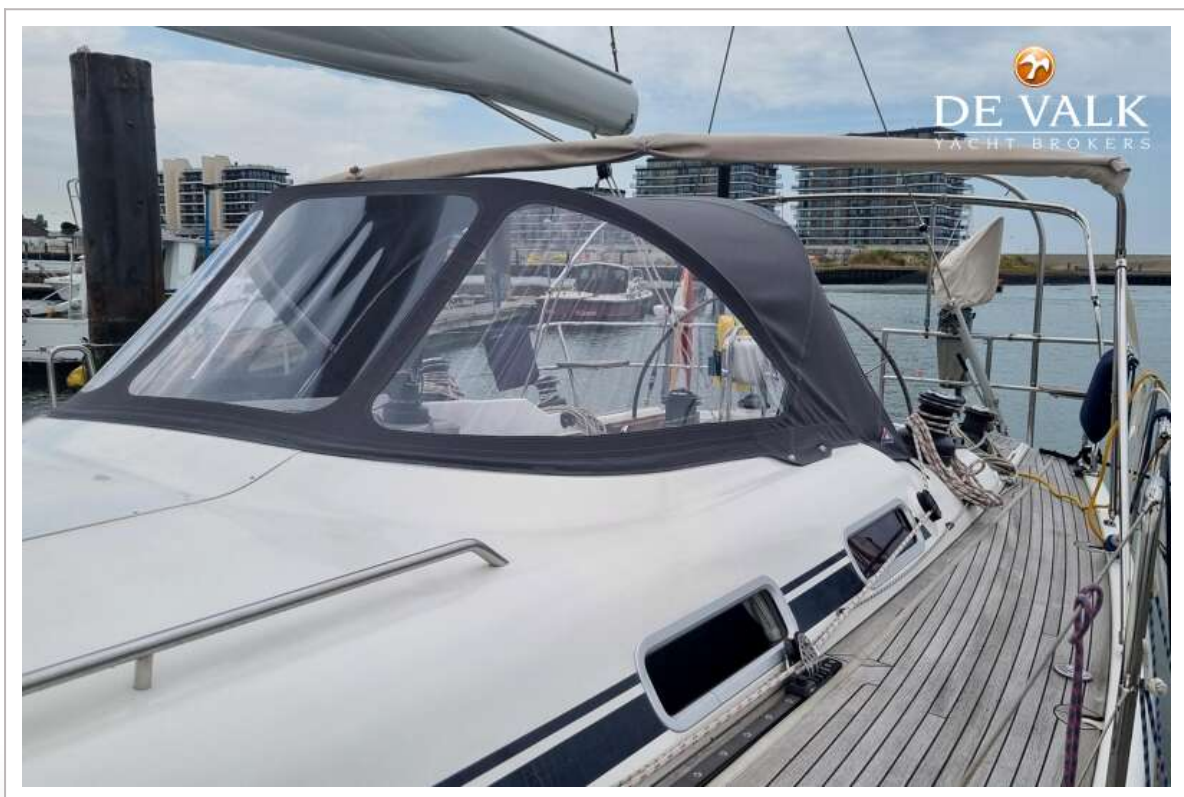
DEHLER 47



DEHLER 47



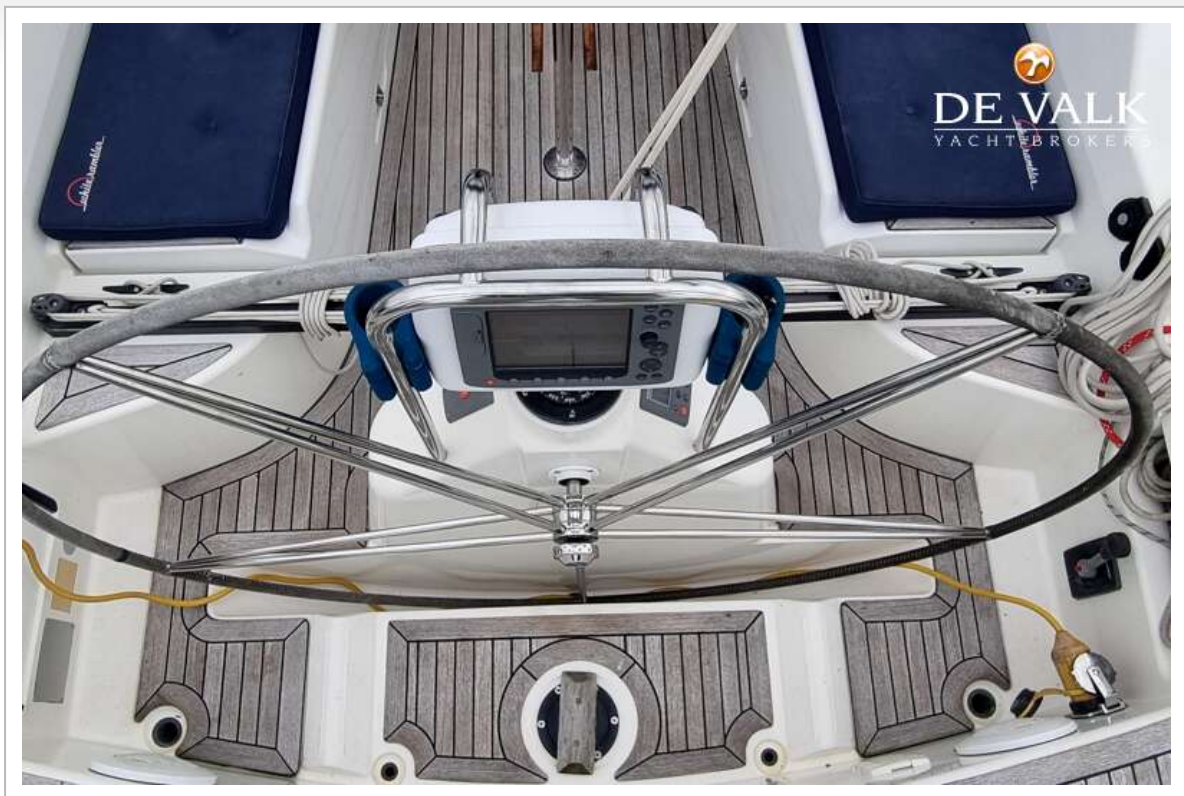
DEHLER 47



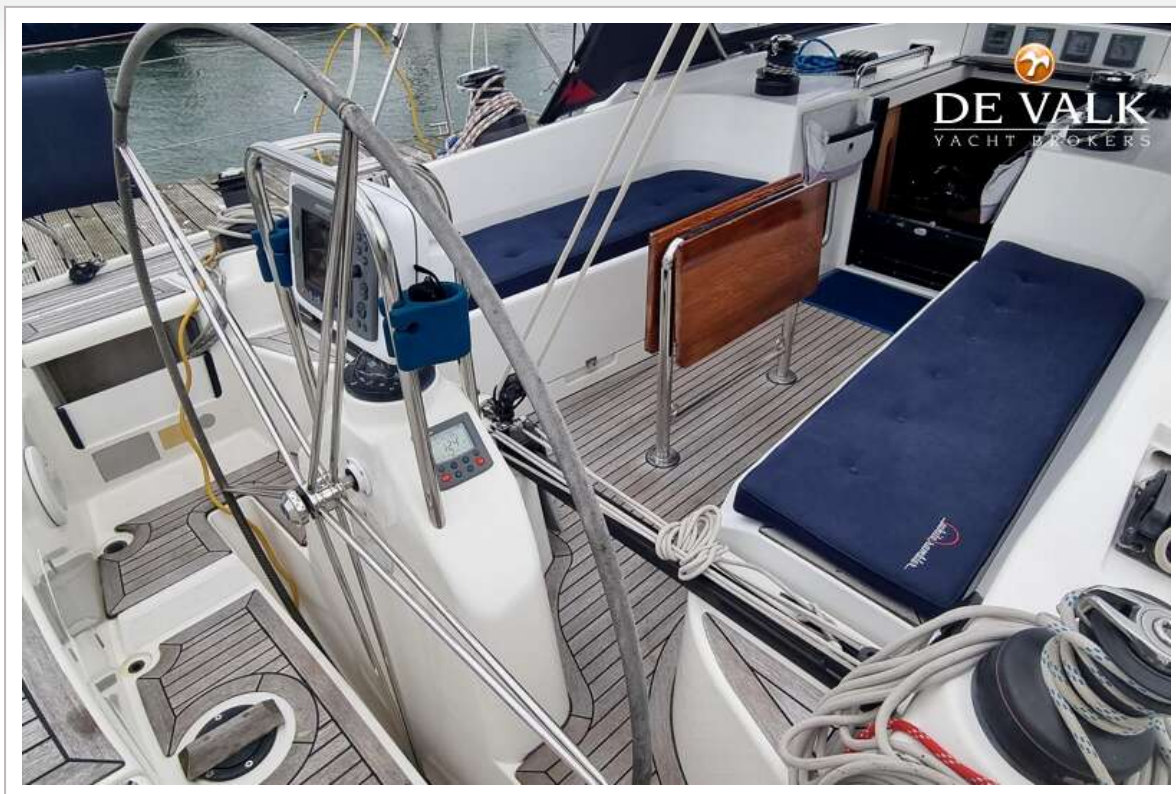
DEHLER 47



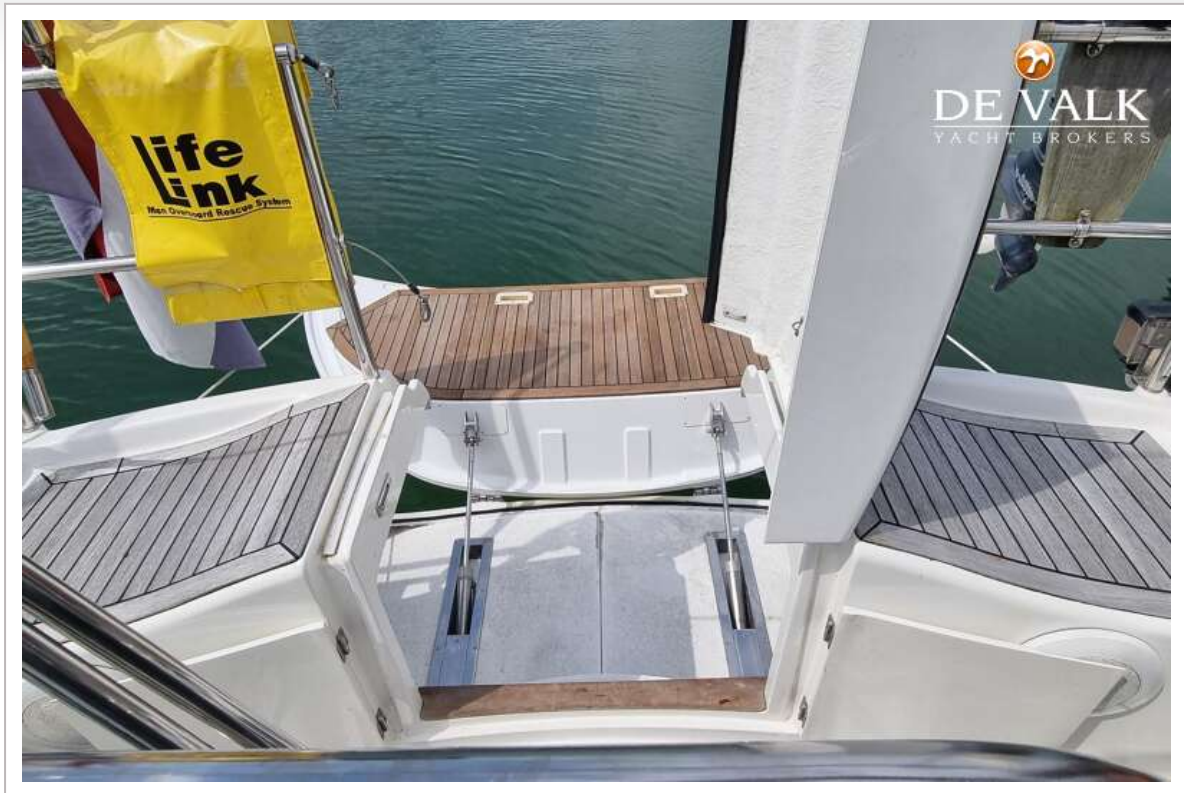
DEHLER 47



DEHLER 47



DEHLER 47



DEHLER 47



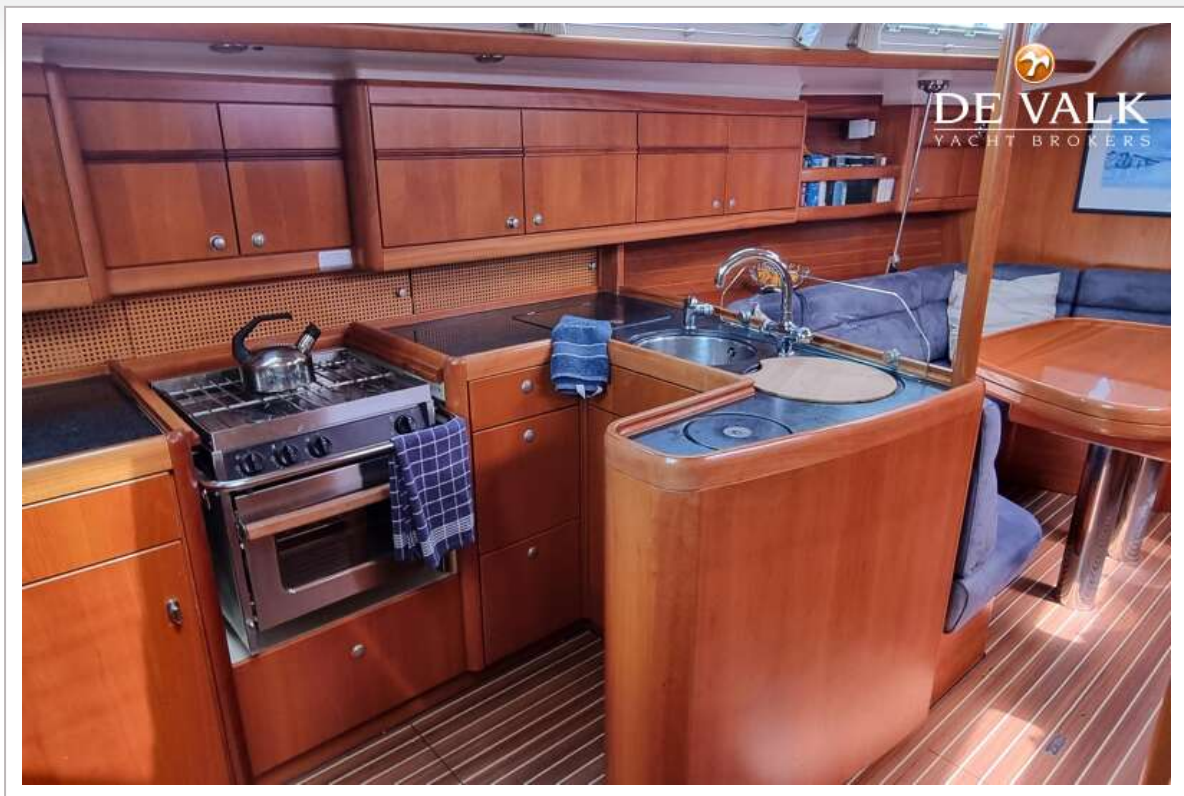
DEHLER 47



DEHLER 47

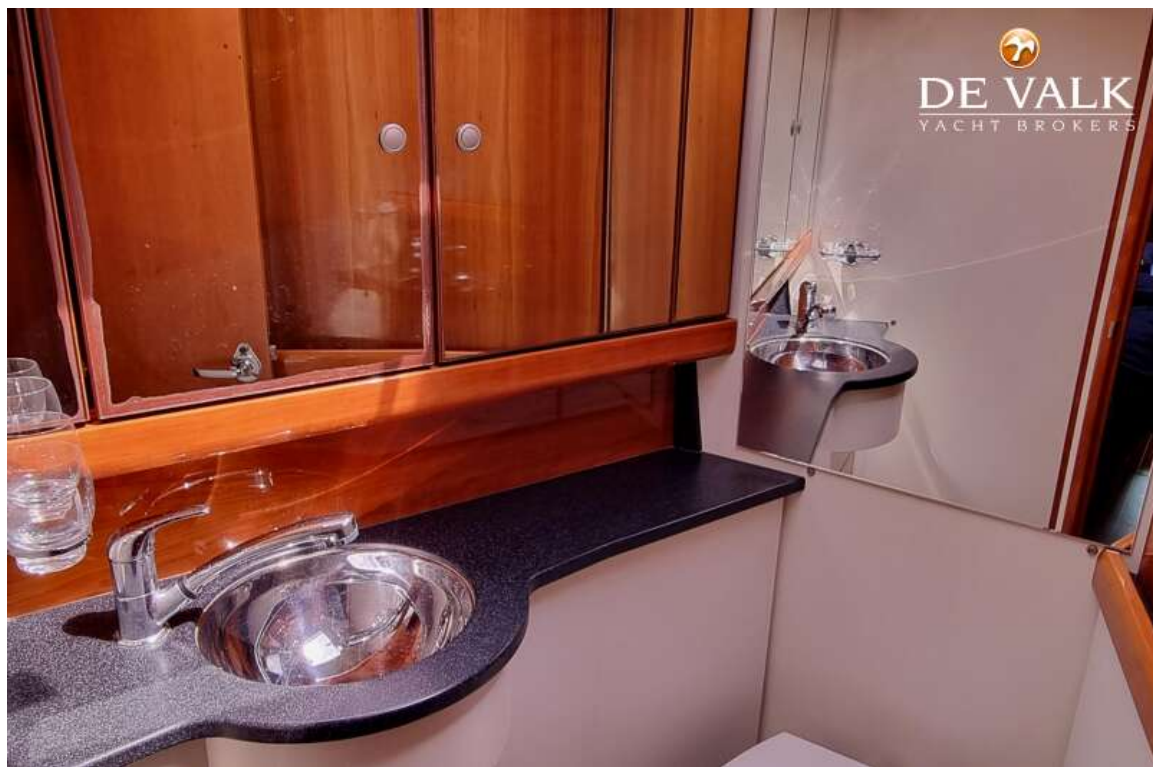


DEHLER 47



DEHLER 47

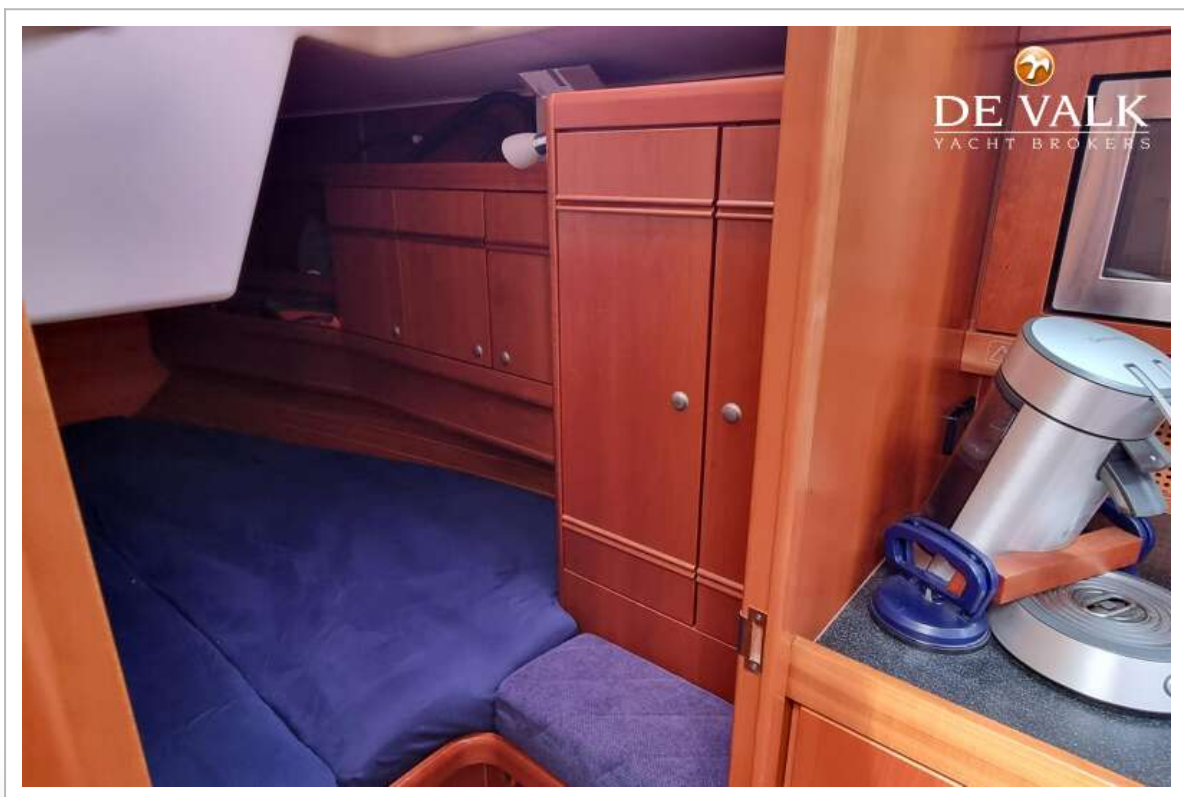
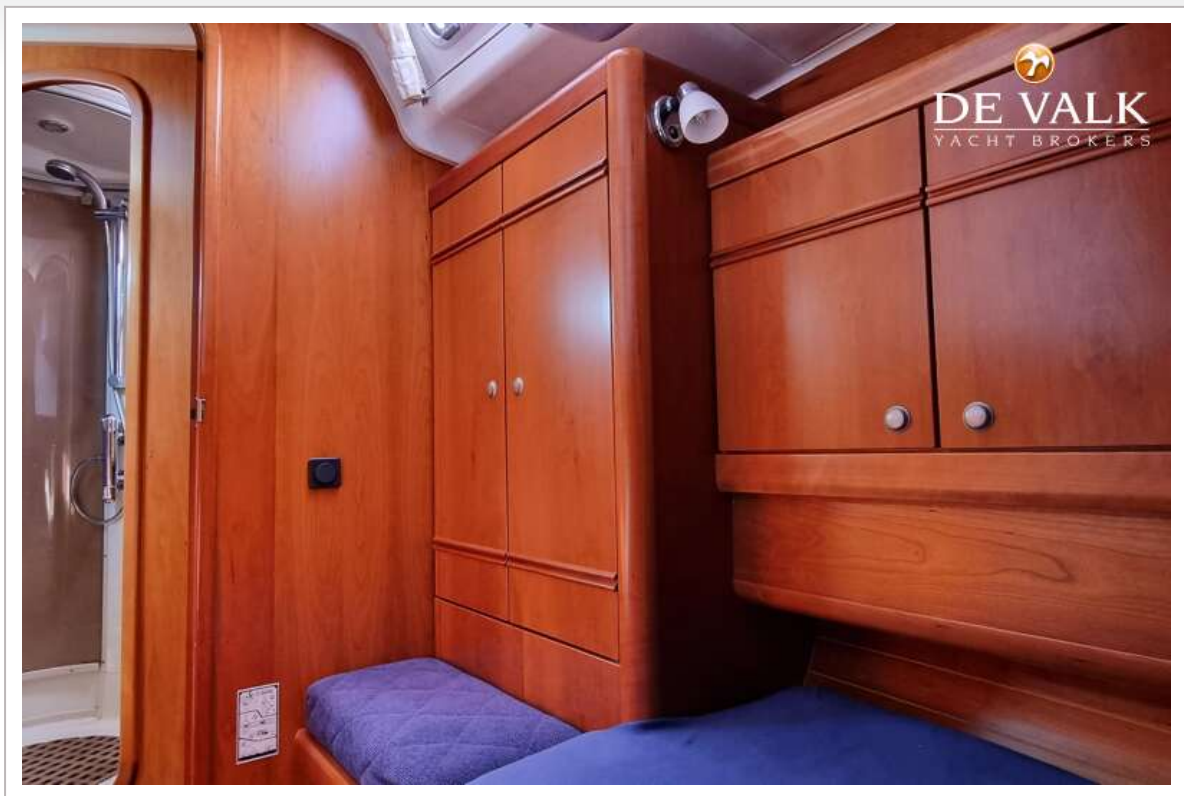


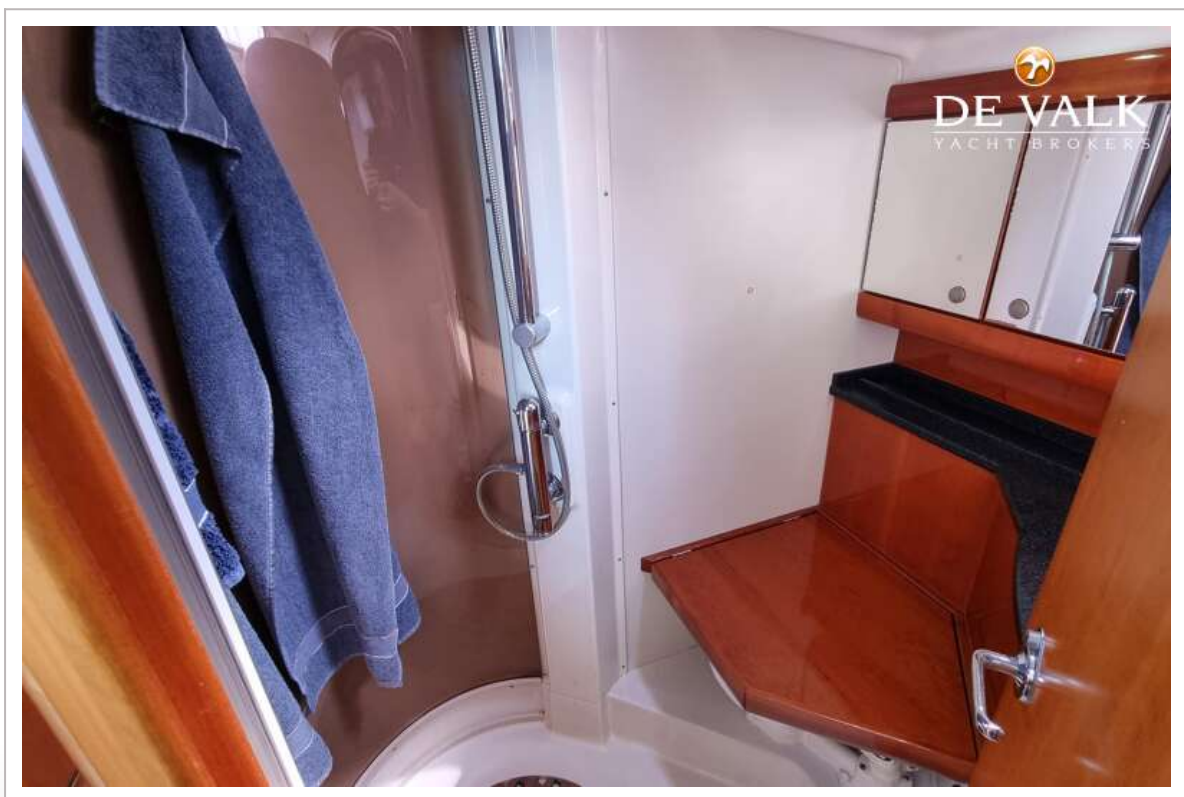
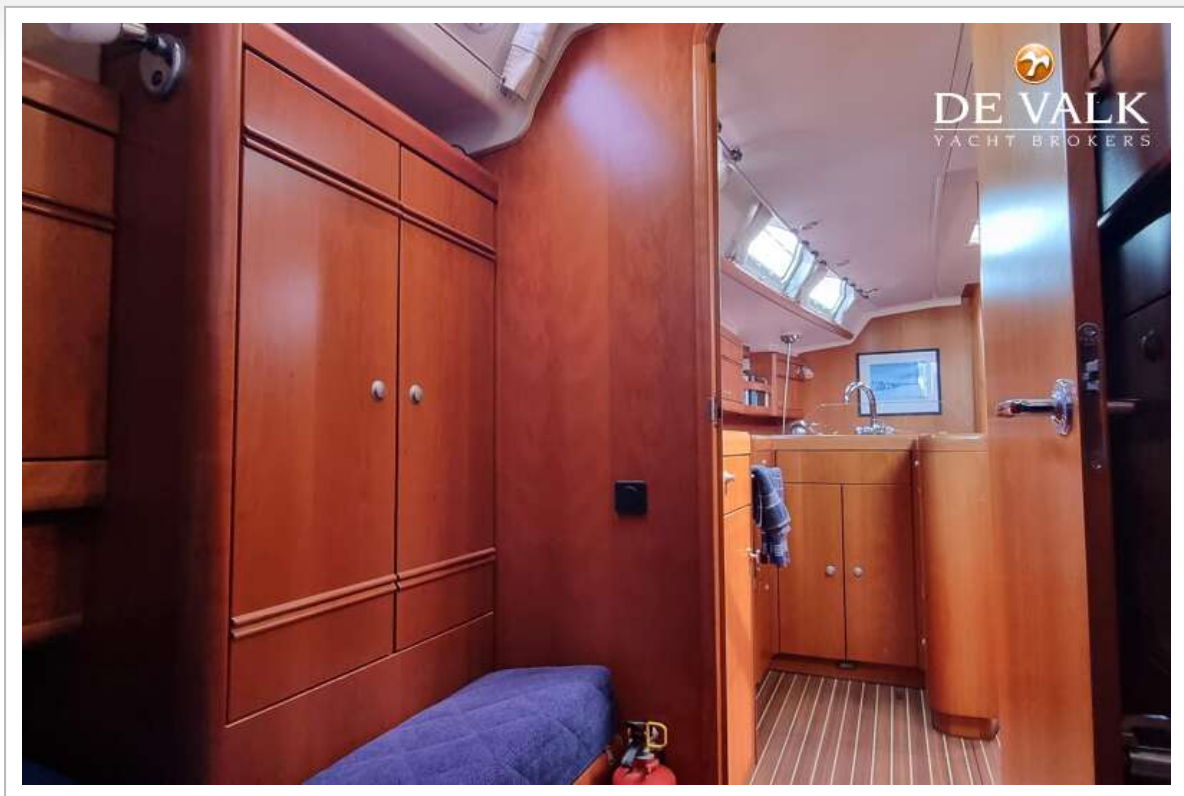


DEHLER 47

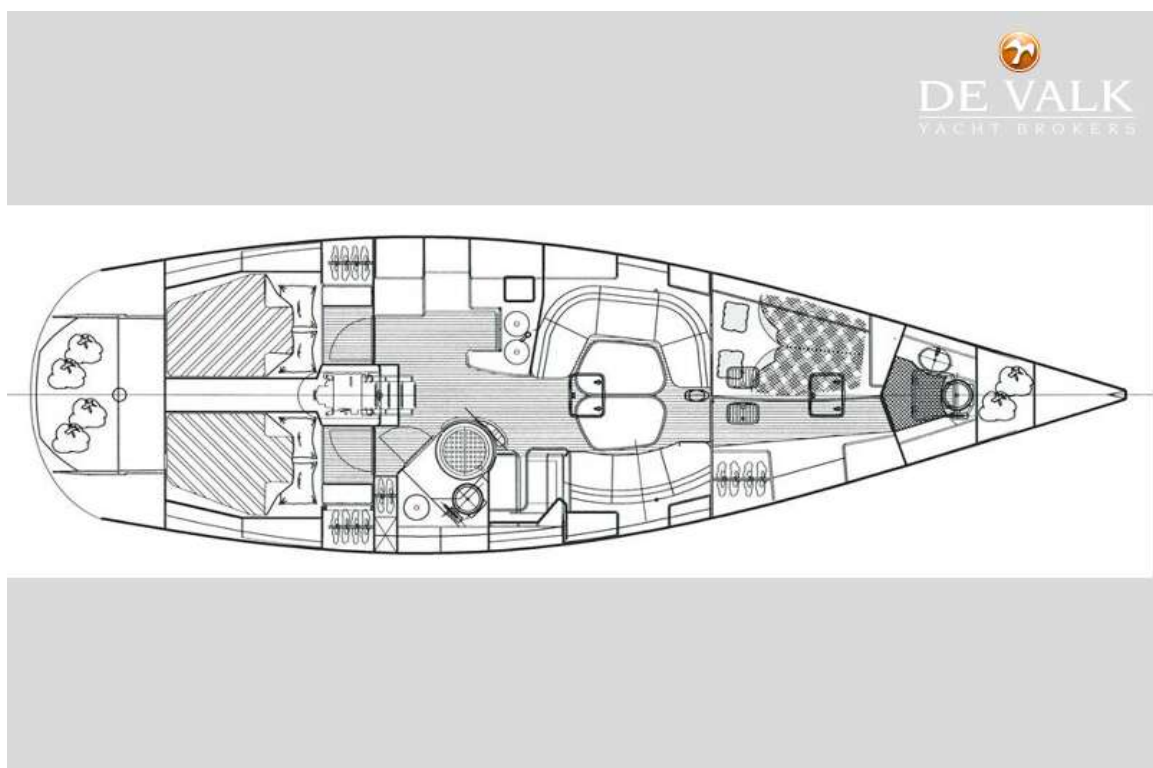


DEHLER 47





DEHLER 47



DEHLER 47

