



THIS YACHT WILL BE AUCTIONED

SMELNE VLET 1200 AK

SMELNE VLET 1200 AK

BROKER'S COMMENTS

The Smelne Vlet 1200 AK is a one of a kind beauty built by the high Smelne standard. Due to her bilge keels, CE-B and heavier engine she is capable to cruise both the inland as coastal waters. The Smelne is easy to manoeuvre because of her bow and stern thruster. Both the first and current owner haven't saved anything on the maintenance, which you will directly see when visiting her. The Smelne Vlet 1200 AK will be auctioned online at Bright Auctions. Bids can only be placed online at Bright Auctions. All information about the auction is available on the website <https://bit.ly/4ifi0IB>

Sjoerd Paddenburg

SPECIFICATIONS

Dimensions	12.75 x 4.15 x 1.15 (m)	Builder	Smelne Yachts
Built	2005	Cabins	2
Material	Steel	Berths	4
Engine(s)	1 x Vetus Deutz (6 cil.) diesel	Hp/Kw	159.00 (hp), 117.02 (kw)
Asking price	sold (VAT)	Lying	at sales office

CONTACT

Sales office	De Valk Loosdrecht B.V.	Telephone	+31 (0)35 582 90 30
Address	't Breukeleveense Meentje 6 1231LM Loosdrecht / Wijdmeren NL	E-mail	loosdrecht@devalk.nl

DISCLAIMER

These particulars are given in good faith as supplied but cannot be guaranteed.



SMELNE VLET 1200 AK

GENERAL

Model	SMELNE VLET 1200 AK
Type	motor yacht
LOA (m)	12,75
Beam (m)	4,15
Draft (m)	1,15
Headroom (m)	2,05
Year built	2005
Builder	Smelne Yachts
Country	The Netherlands
CE norm	B
Hull material	steel
Hull colour	Dark Blue 2022
Superstructure material	steel
Rubbing strake	fender rope 2022
Deck material	steel
Deck finish	non-skid moulded in
Superstructure deck finish	paint
Cockpit deck finish	synthetic teak
Antifouling (year)	07- 2024 Kooistra jachtschilder Akkrum
Window frame	aluminium
Window material	double glazing
Deckhatch	yes
Portholes	aluminium
Insulation	yes
Mast can be lowered	manual
Fuel tank (litre)	1000L
Level indicator (fuel tank)	yes
Freshwater tank (litre)	stainless steel 2X 450L
Level indicator (freshwater)	yes
Blackwater tank (litre)	250L



Level indicator (blackwater)	yes
Wheel steering	hydraulic
Outside helm position	hydraulic
More info on paintwork	New paint (2022)
Extra info	New upholstery (2022)
Extra info	All interior lights are LED
Extra info	After the inverter short-circuited, part of the interior was replaced due to heat damage. This has been repaired as far as possible.

ACCOMMODATION

Cabins	2
Berths	4
Interior	teak
Floor	carpet
Aft deck	yes
Saloon	yes
Headroom saloon (m)	2,05+/-
Heating	central heating Kabola
Dinette to convert into berth	yes
Opening door to cockpit	yes
Opening door to aft deck	yes
Galley	yes
Countertop	plastic
Sink	stainless steel
Cooker	calor gas Gas system is recent surveyed
Microwave/oven combi	Etna
Fridge	2X
Freezer	In fridge
Hot water system	on central heating
Water pressure system	electrical
Owners cabin	double bed



Wardrobe	hanging/drawers/shelves
Bathroom	en suite
Toilet	shared
Toilet system	electric
Wash basin	at the toilet
Shower	en suite
Guest cabin 1	v-bed
Wardrobe	shelves

MACHINERY

No of engines	1
Make	Vetus Deutz (6 cil.)
HP	159
kW	117.02
Fuel	diesel
Maximum speed (kn)	8,5
Cruising speed (kn)	7
Consumption (l/hr)	7
Engine hours	3145
Engine cooling system	closed keelcooling
Drive	shaft
Engine controls	bowden cable
Gearbox	hydraulic
Bowthruster	electric Vetus (overhaul 2022)
Sternthruster	electric Vetus (overhaul 2022)
Exhaust	dry
Propeller type	fixed
Propeller shaft material	stainless steel
Electric bilge pump	yes
Generator	wet exhaust 6 kva Whisper power 3 cil generator
Batteries	yes



Start battery	1x (2022)
Service battery	4x Victron agm 240 amp (2023)
Bowthruster battery	2x (2022)
Sternthruster battery	2x (2022)
Battery monitor	Mastervolt
Battery charger/inverter	Mastervolt
Solar panel	Panasonic
Shorepower	with cable

NAVIGATION

Electric compass	Raymarine E70011
Depth sounder/log	Raymarine E70011
VHF	Raymarine
Autopilot	Raymarine
Rudder angle indicator	Raymarine
Plotter/GPS	Raymarine E70011
AIS receiver	yes
AIS transponder	yes
Navigation lights	yes
Searchlight	Jabsco

EQUIPMENT

Cockpit cover	2022
Cockpit cushions	yes
Cockpit table	yes
Cockpit chairs	yes
Bathing platform	yes
Boarding ladder	stainless steel
Anchor	yes
Windlass	manual
Deck wash	yes



Davits	stainless steel
Davits controls	manual
Sea railing	stainless steel
Grab rail (superstructure)	stainless steel
Railing side opening gates	yes
Wiper	3x
Horn	yes
Fenders	yes
Mooring lines	yes
Radio	Fusion MS-RA210
Cockpit speakers	yes
Speakers in salon	yes





BROKERAGE | CHARTER | BERTHS | FINANCE | INSURANCE | YACHT MANAGEMENT
DE VALK
YACHT BROKERS



**This yacht will be auctioned,
for further details please visit www.devalk.nl**

**Dit schip zal worden geveild,
voor meer informatie gaat u naar www.devalk.nl**

**Dieses Schiff wird versteigert,
für weitere informationen besuchen Sie www.devalk.nl**

WWW.DEVALK.NL



DE VALK
YACHT BROKERS



SMELNE VLET 1200 AK



SMELNE VLET 1200 AK



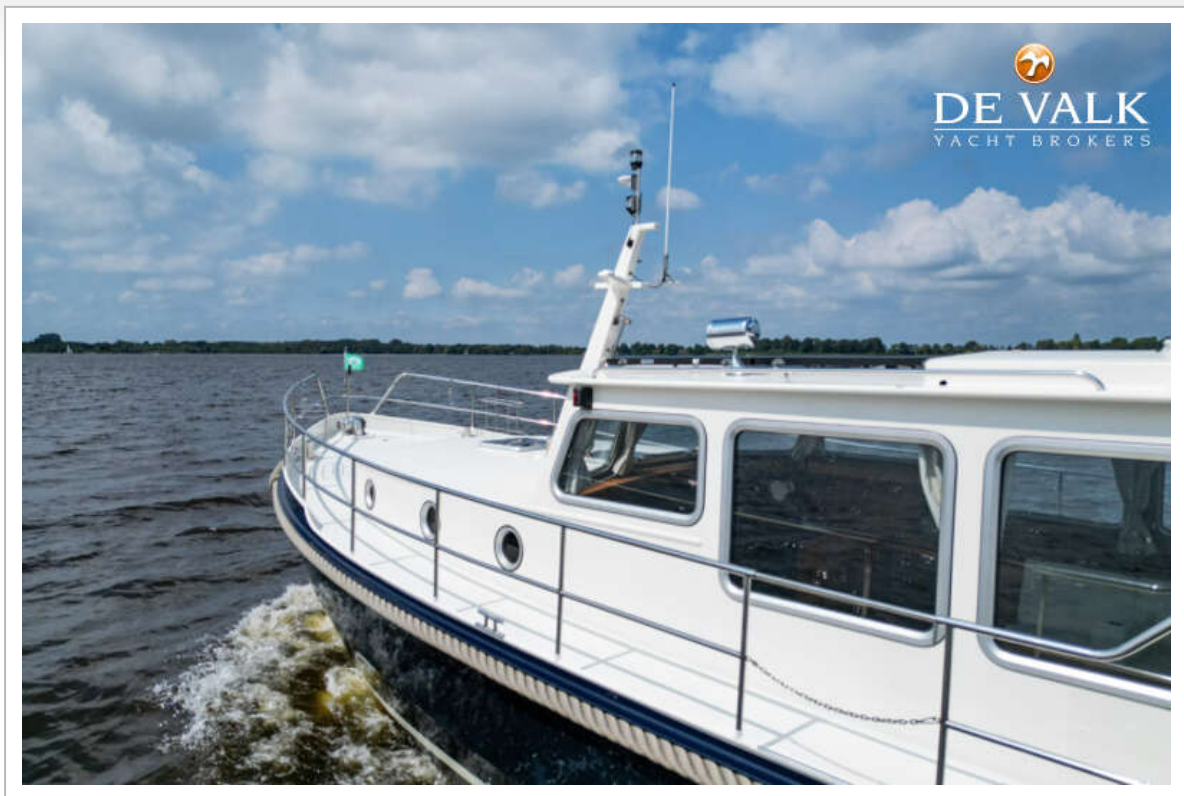
SMELNE VLET 1200 AK



SMELNE VLET 1200 AK



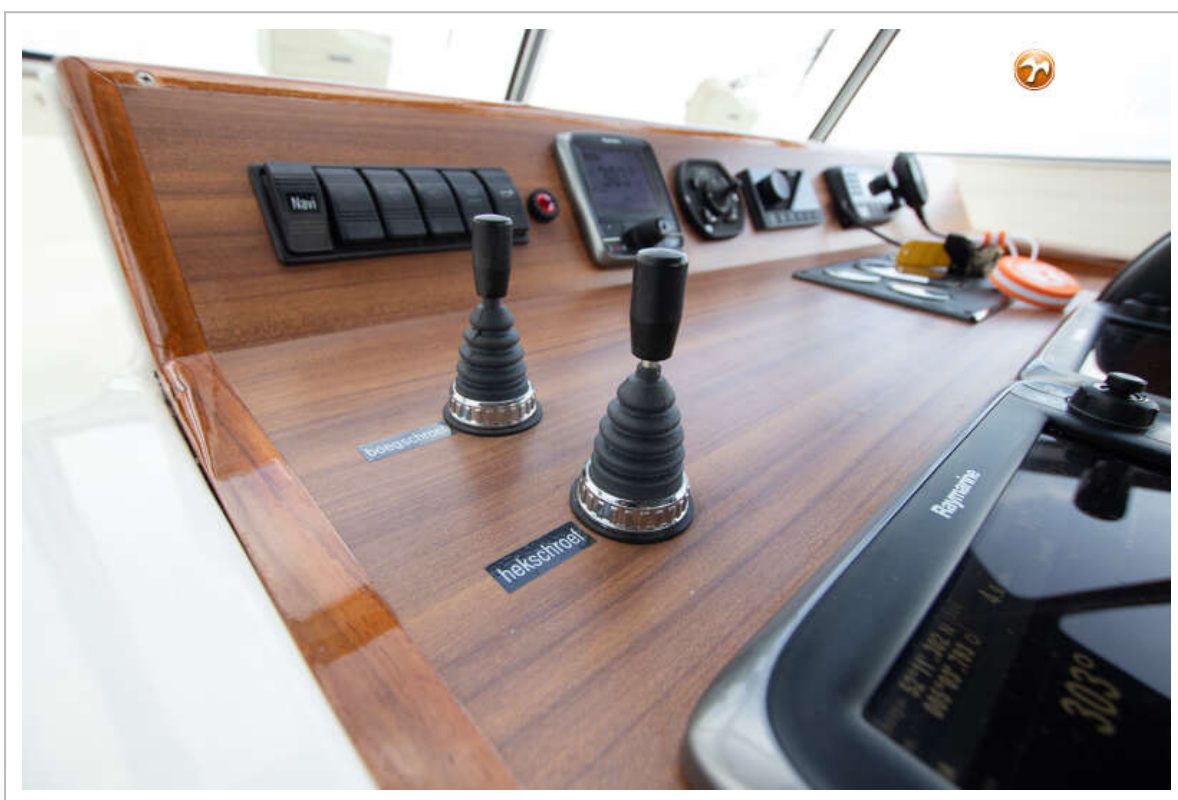
SMELNE VLET 1200 AK



SMELNE VLET 1200 AK



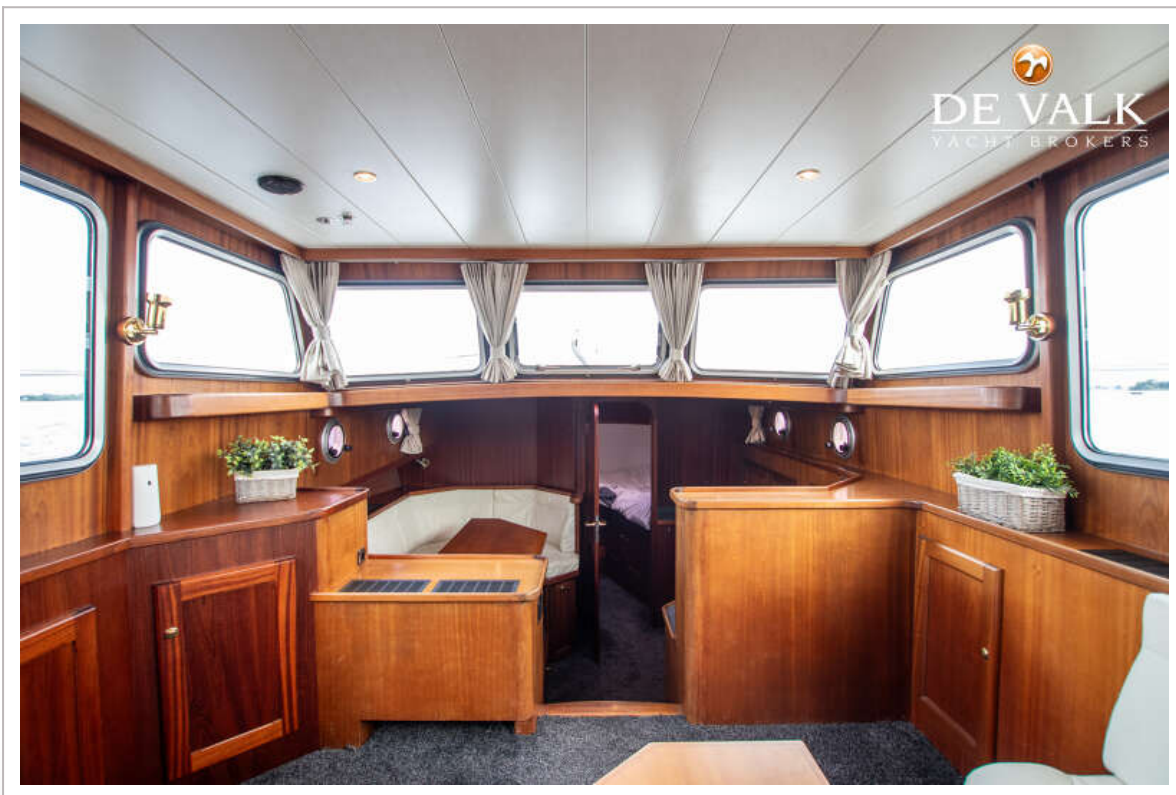
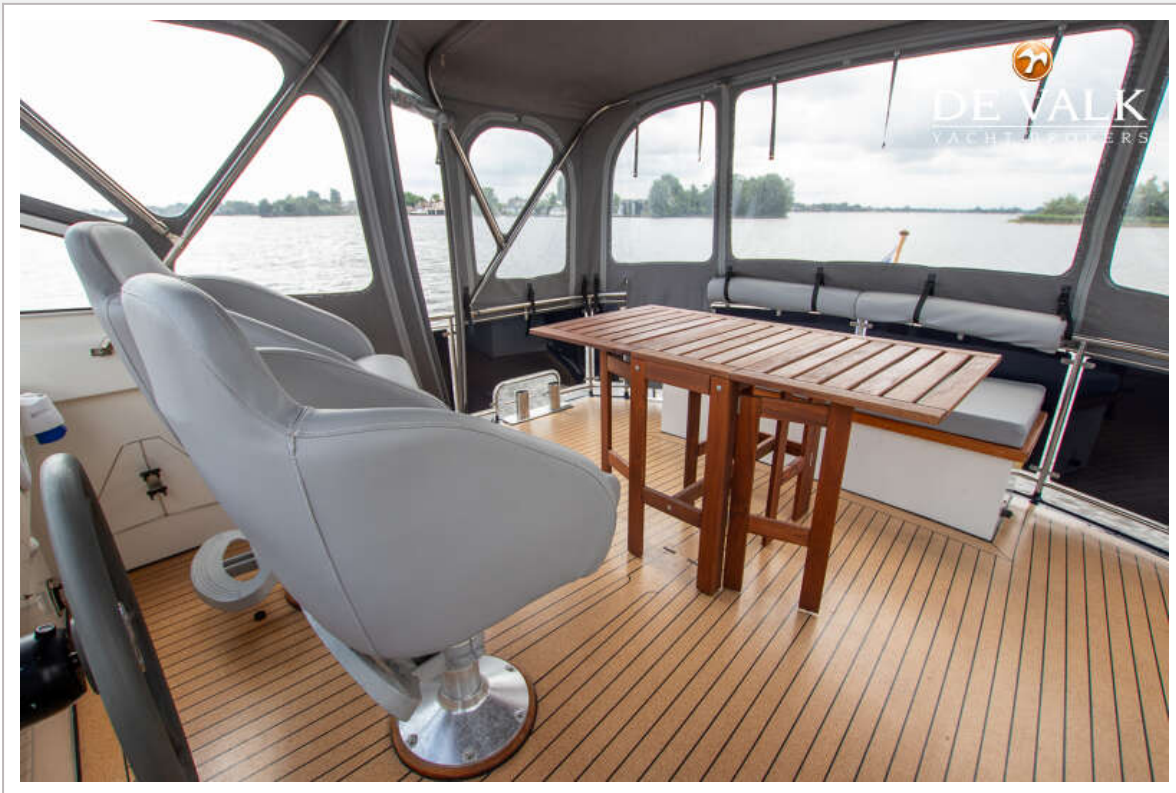
SMELNE VLET 1200 AK



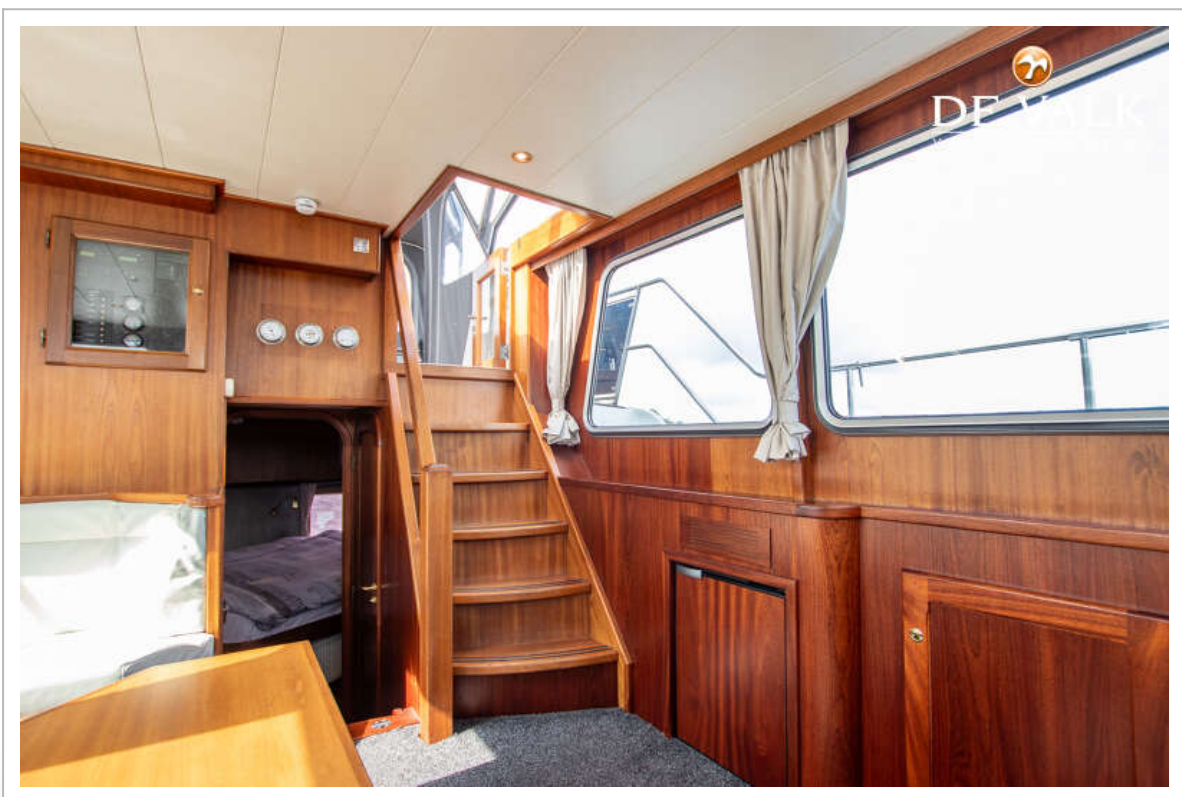
SMELNE VLET 1200 AK



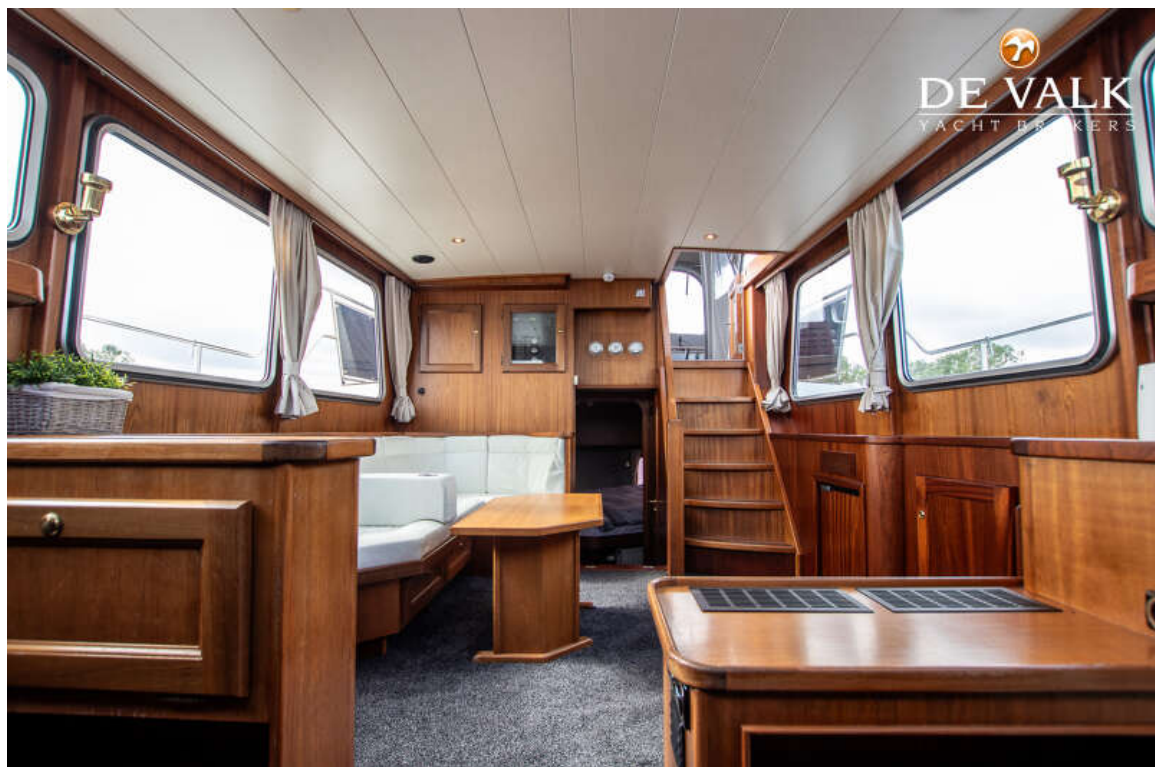
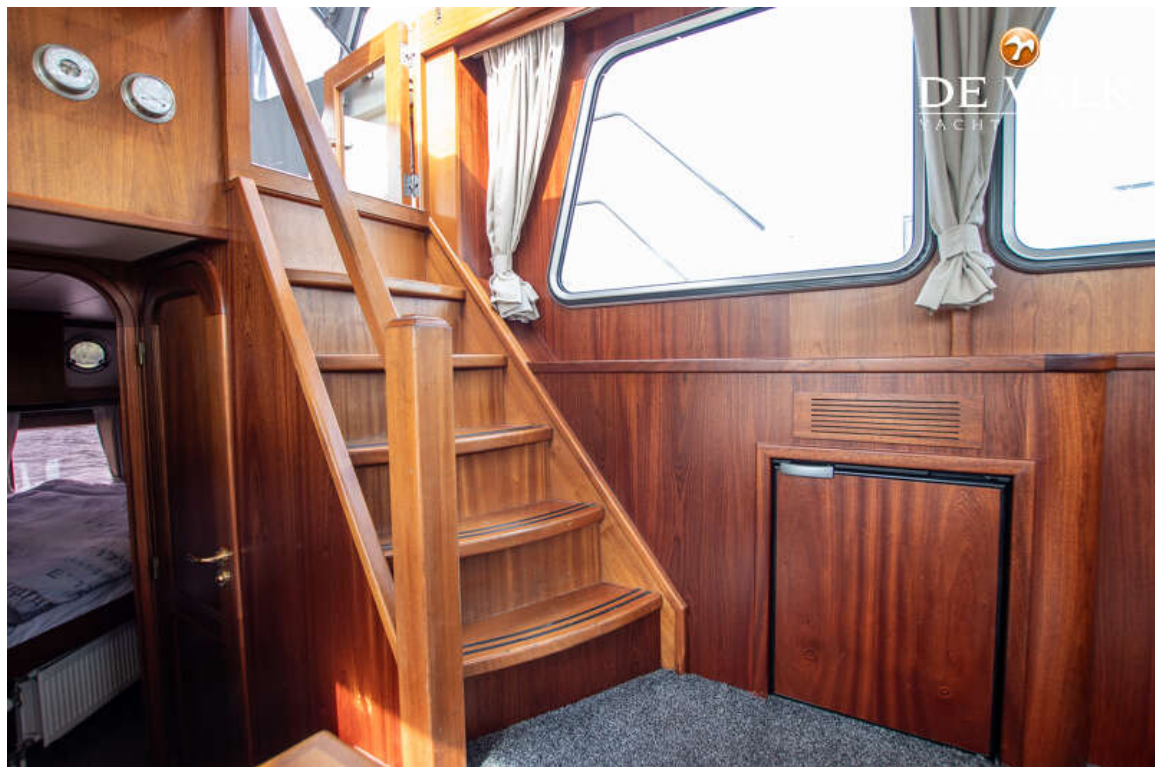
SMELNE VLET 1200 AK



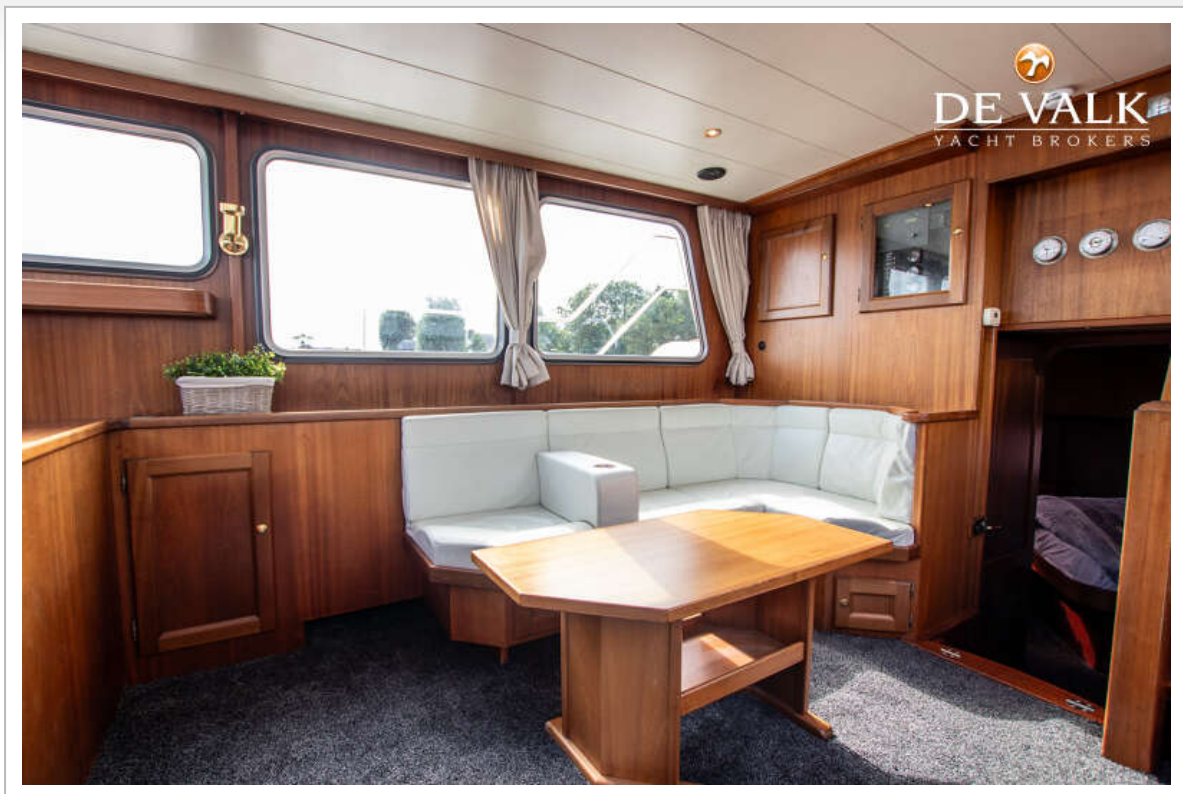
SMELNE VLET 1200 AK



SMELNE VLET 1200 AK



SMELNE VLET 1200 AK



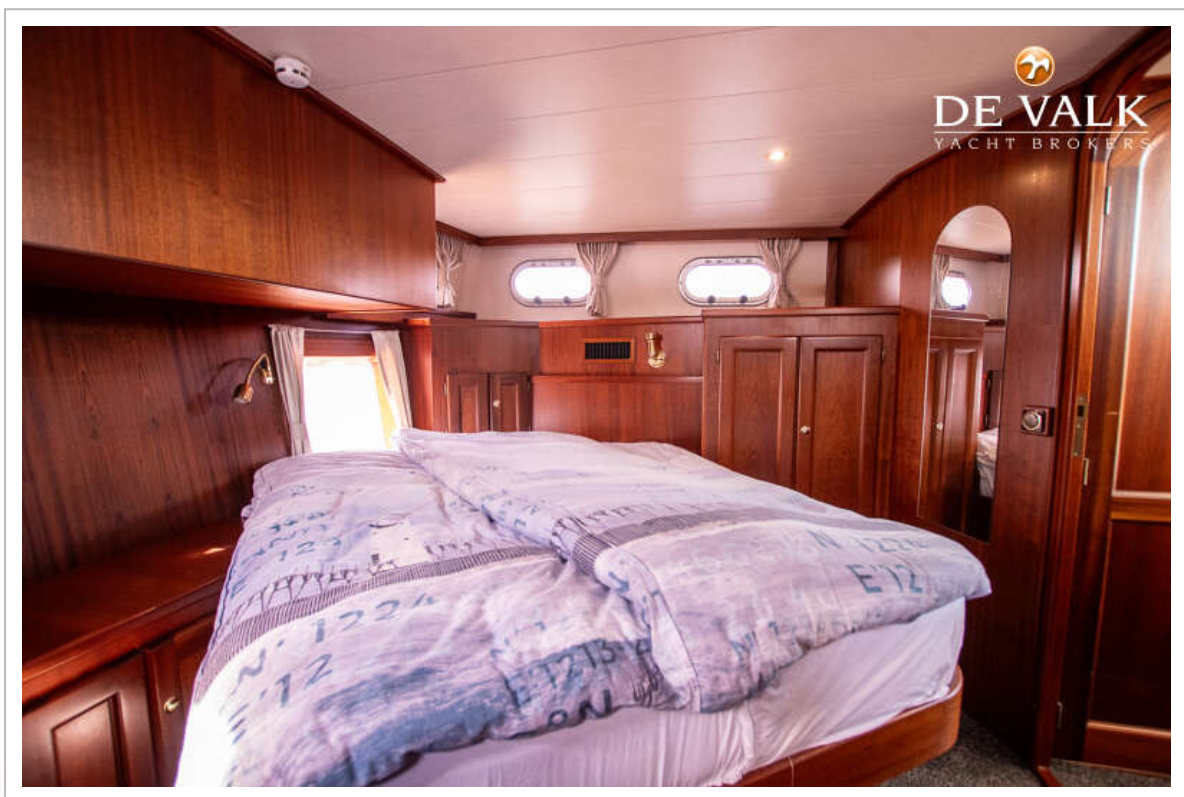
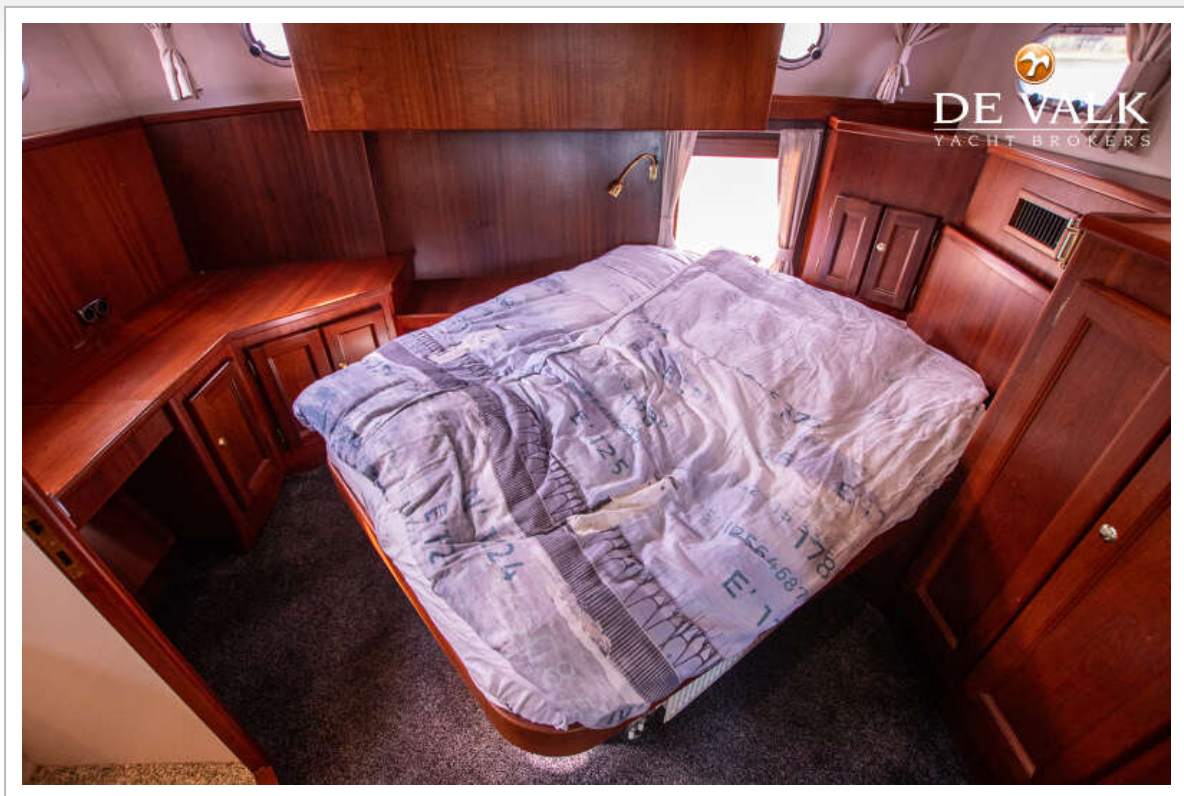
SMELNE VLET 1200 AK



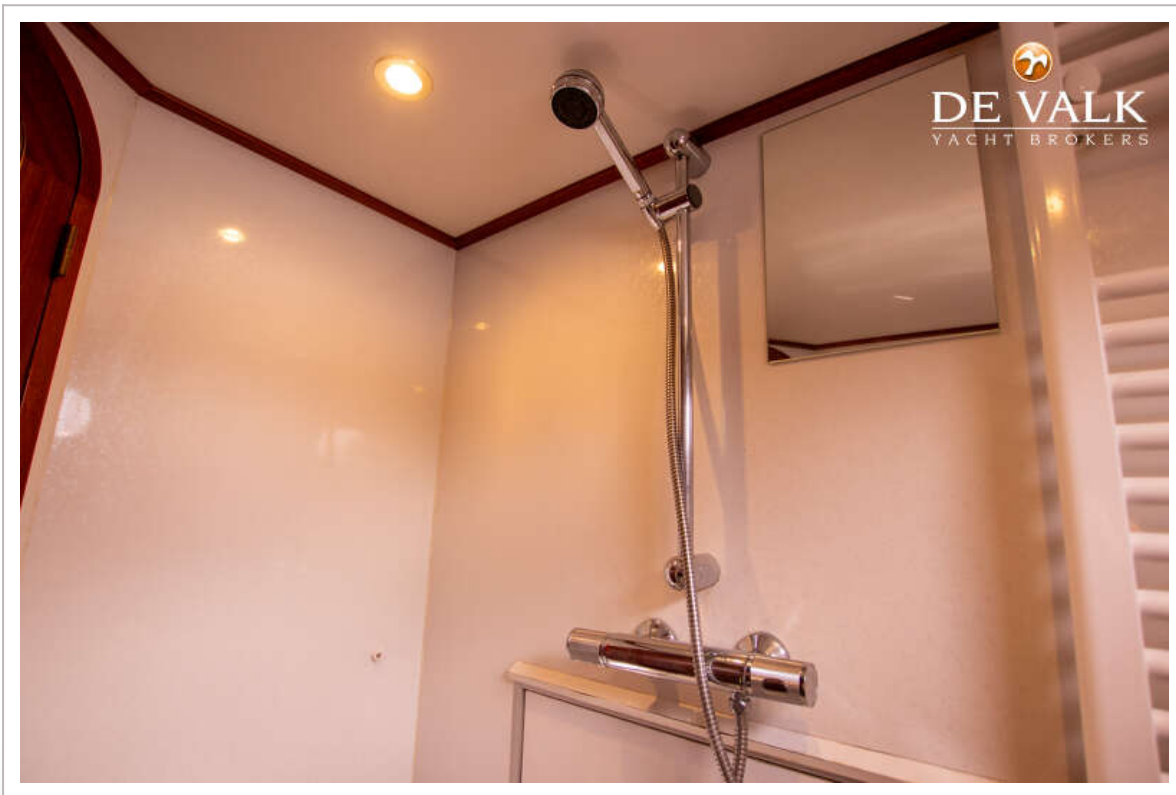
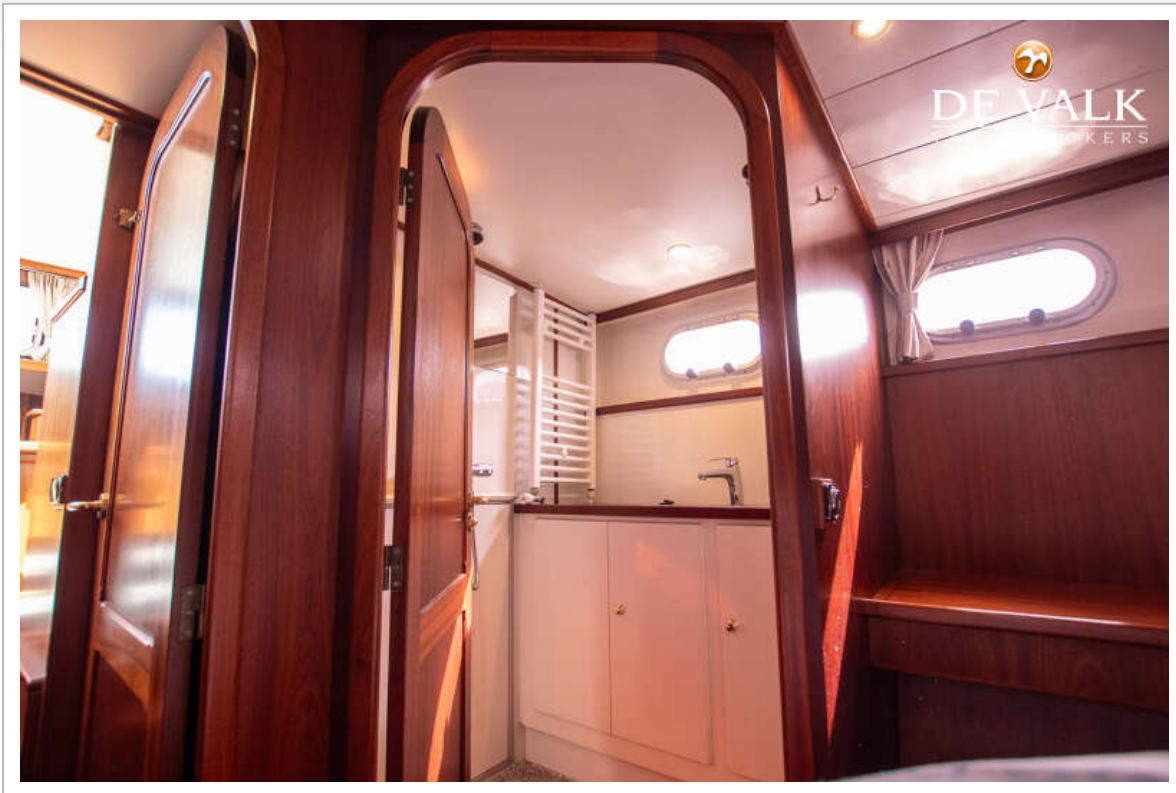
SMELNE VLET 1200 AK



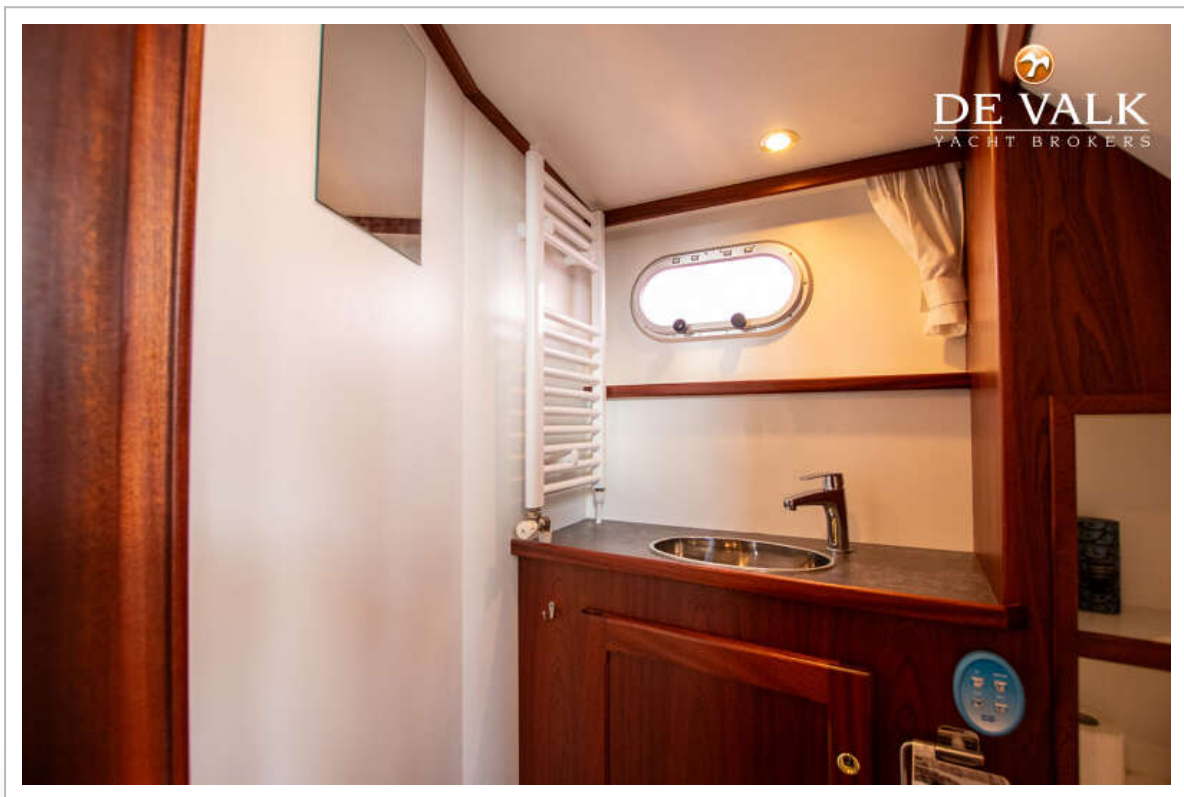
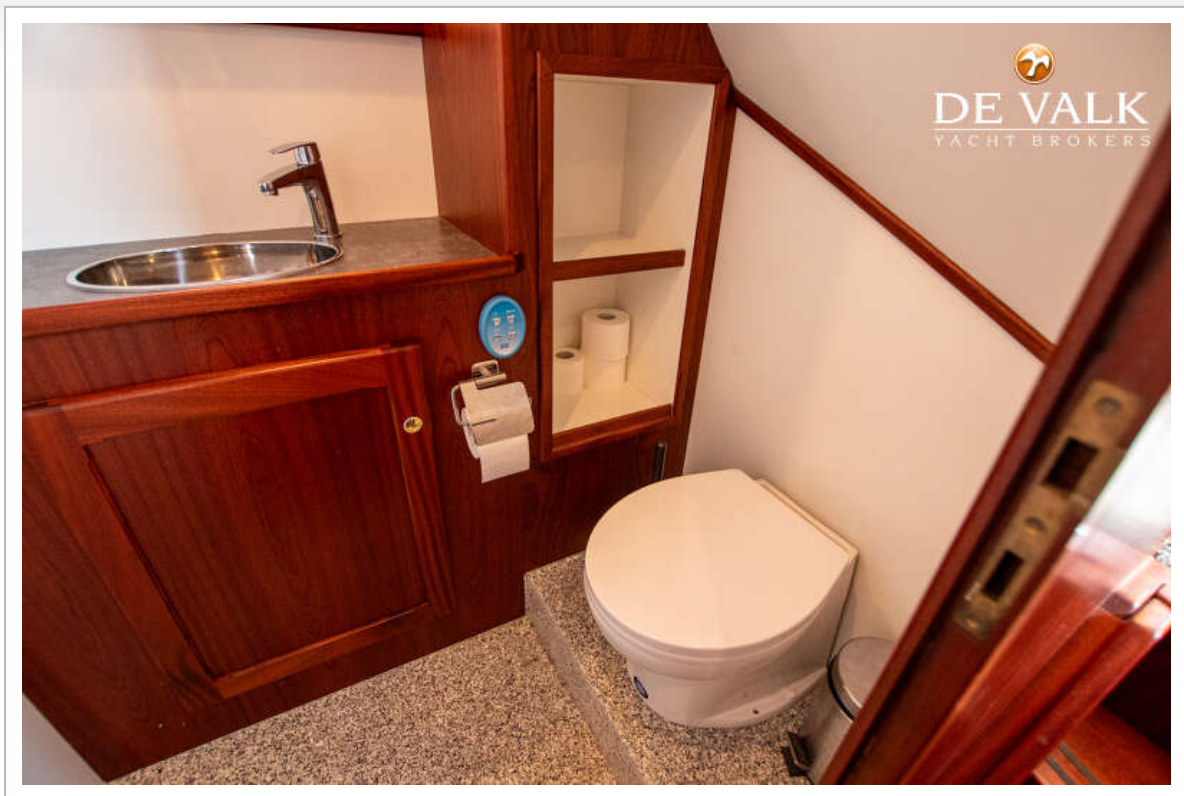
SMELNE VLET 1200 AK



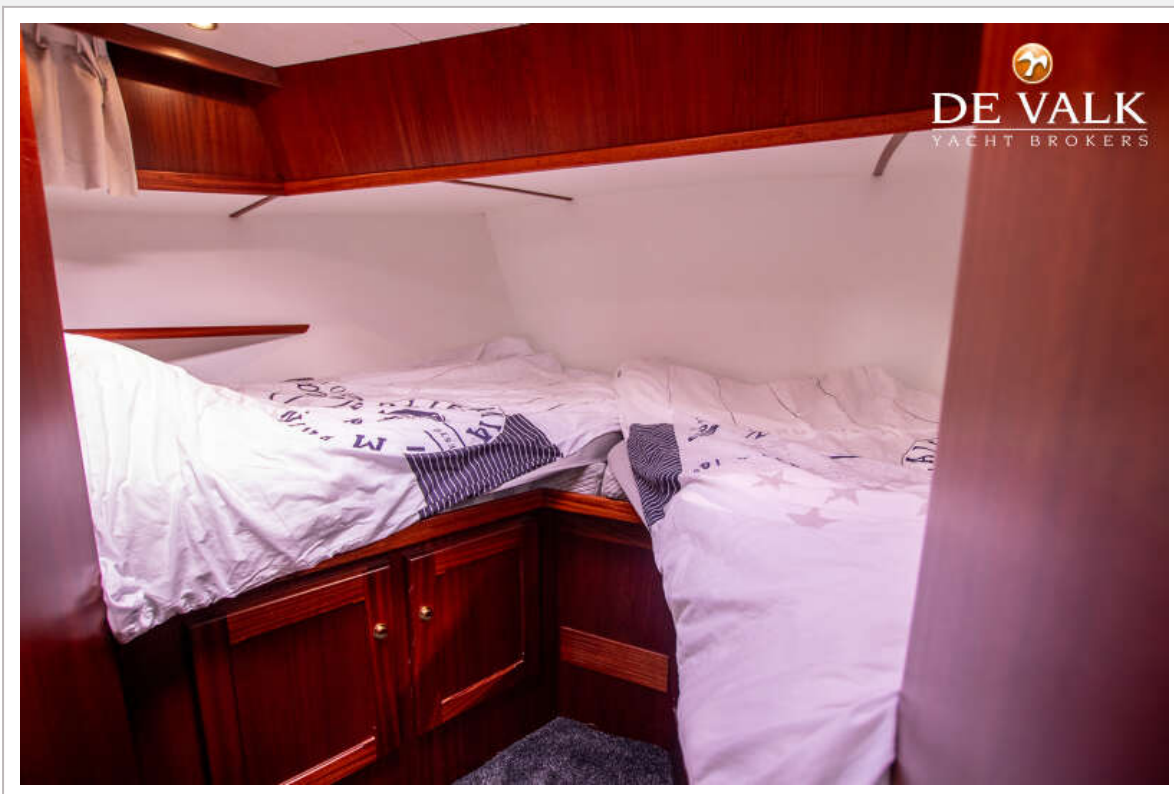
SMELNE VLET 1200 AK



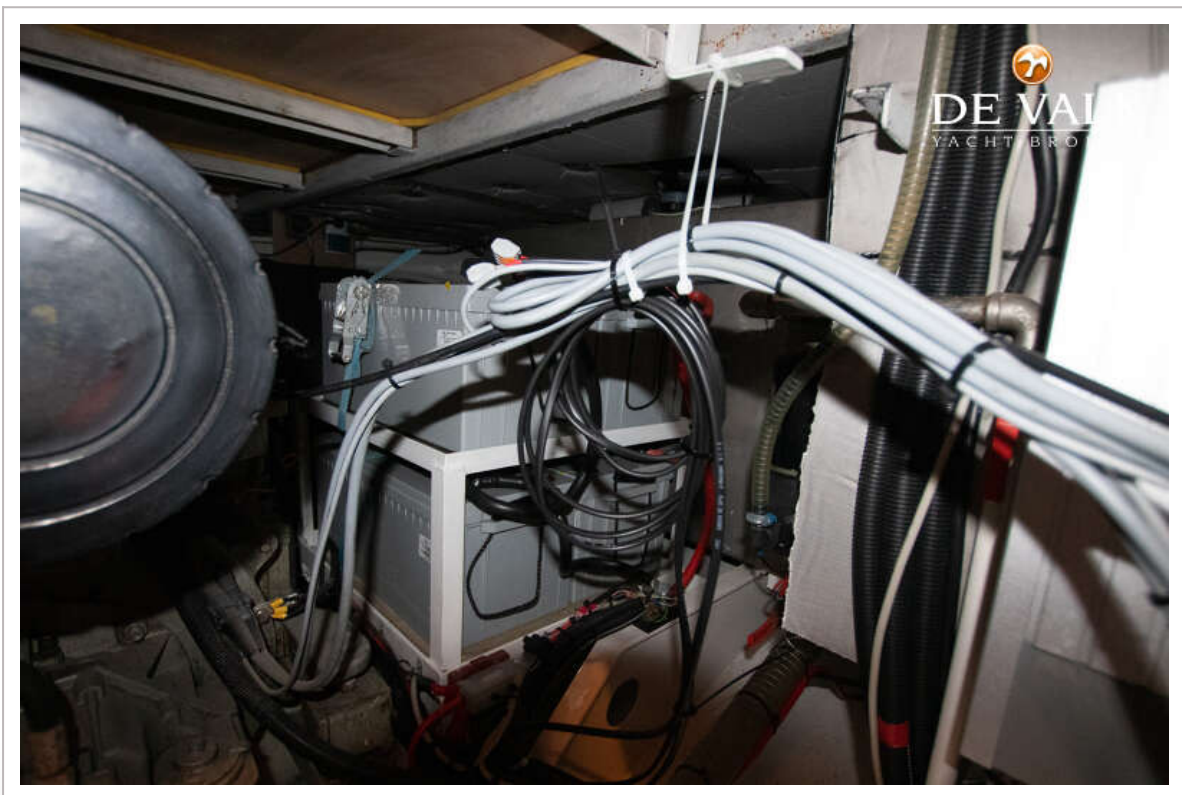
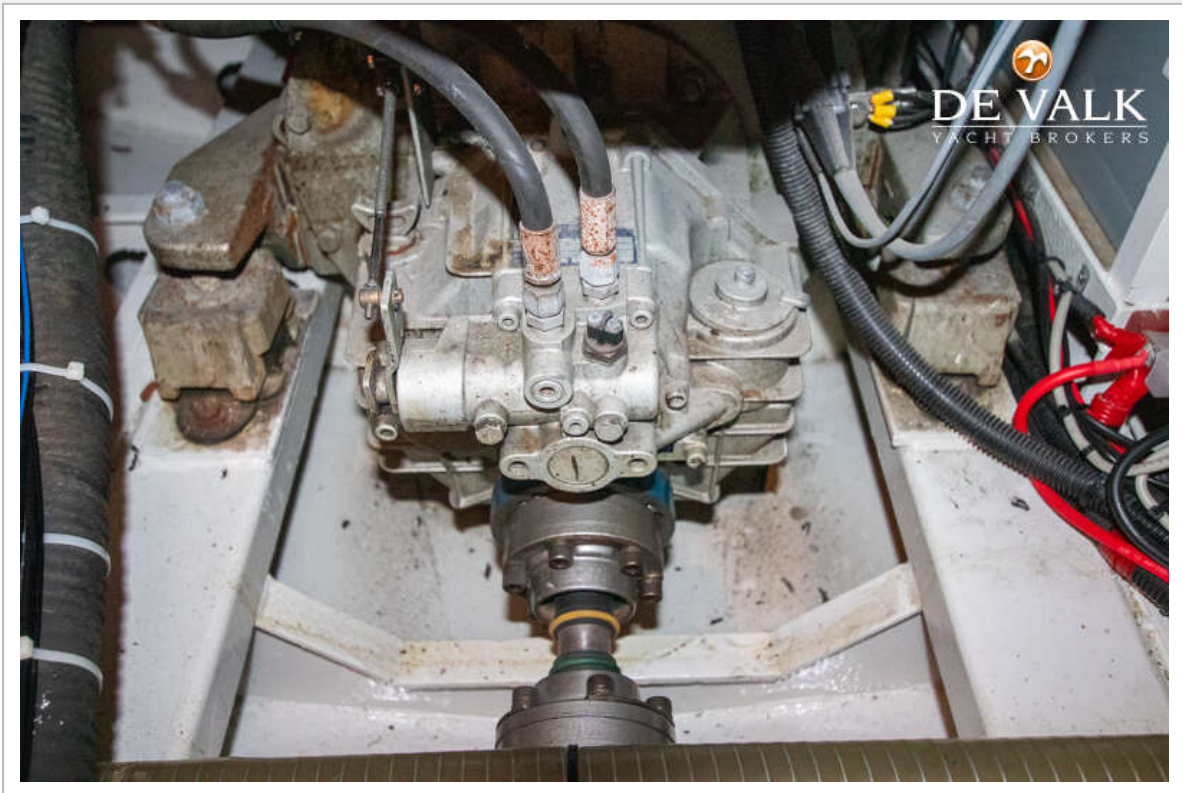
SMELNE VLET 1200 AK



SMELNE VLET 1200 AK



SMELNE VLET 1200 AK



SMELNE VLET 1200 AK

