



DE VALK  
YACHT BROKERS



## PREMIER DIXON 62



DE VALK  
YACHT BROKERS

## BROKER'S COMMENTS

Sandia Crest is a stunning blue water cruising yacht designed by Bill Dixon and built by Premier Yachts UK. Constructed in steel, she is safe and sturdy in any ocean and is set up for shorthanded and solo sailing. Her very high specification build and luxury interior oozes quality, comfort and safety. She is well equipped, ready for her next adventure and suited to cross the Atlantic or even a circumnavigation, with what will be her third owners. We are proud to present her and look forward to showing her.

*Zoë Ann Clark*

## SPECIFICATIONS

<b>Dimensions</b>	18.90 x 4.85 x 2.45 (m)	<b>Builder</b>	Premier Yachts Limited
<b>Built</b>	1999	<b>Cabins</b>	3
<b>Material</b>	Steel	<b>Berths</b>	7
<b>Engine(s)</b>	1 x Perkins Sabre M225TI diesel	<b>Hp/Kw</b>	228.00 (hp), 167.81 (kw)
<b>Asking price</b>	€ 450.000 (VAT Paid)	<b>Lying</b>	at sales office

## CONTACT

<b>Sales office</b>	De Valk Almeria	<b>Telephone</b>	+34 950 497 825
<b>Address</b>	Puerto Deportivo, Darsena de la Batea 42 04711 Almerimar ES	<b>E-mail</b>	almeria@devalk.nl

## DISCLAIMER

These particulars are given in good faith as supplied but cannot be guaranteed.



## GENERAL

Model	PREMIER DIXON 62
Type	sailing yacht
LOA (m)	18,90
LWL (m)	15,06
Beam (m)	4,85
Draft (m)	2,45
Air draft min (m)	22,00
Headroom (m)	2,15
Year built	1999
Launched	2000
Builder	Premier Yachts Limited
Country	United Kingdom
Designer	Bill Dixon
Displacement (t)	40
Ballast (tonnes)	cast iron
Gross tonnage	33.52
CE norm	A
Hull material	steel
Hull colour	off-white
Hull thickness (mm)	8 - 6
Hull shape	V-shaped hull
Keel type	long keel
Superstructure material	steel
Superstructure (mm)	6
Deck plate thickness (mm)	6
Deck material	steel
Deck finish	teak
Superstructure deck finish	teak
Cockpit deck finish	teak
Antifouling (year)	09.2023



<b>Dorades</b>	yes
<b>Window frame</b>	stainless steel
<b>Window material</b>	perspex
<b>Deckhatch</b>	Lewmar
<b>Portholes</b>	stainless steel
<b>Insulation</b>	foam
<b>Fuel tank (litre)</b>	steel 2047
<b>Level indicator (fuel tank)</b>	Gauge
<b>Freshwater tank (litre)</b>	polyethylene 1020 total capacity (2 tanks)
<b>Level indicator (freshwater)</b>	Gauge
<b>Blackwater tank (litre)</b>	polyethylene 208
<b>Blackwater tank extraction</b>	deck extraction + pump
<b>Greywater tank (litre)</b>	polyethylene 2 units
<b>Wheel steering</b>	rack & pinion Whitlock
<b>Emergency tiller</b>	In master cabin
<b>More info on hull</b>	In perfect conditions
<b>More info on paintwork</b>	In perfect conditions
<b>Extra info</b>	Hull in pristine conditions

## ACCOMMODATION

<b>Cabins</b>	3
<b>Berths</b>	7
<b>Interior</b>	maple
<b>Layout</b>	3 cabins
<b>Floor</b>	wood
<b>Aft deck</b>	With table and chests
<b>Deck saloon</b>	yes
<b>Headroom saloon (m)</b>	2,15
<b>Heating</b>	central hot water Eberspacher, heating/hot water pipes leading to ind. fan units
<b>Chart table</b>	Immediately to port of the companionway



Aft Cabin	Owners cabin
Galley	Linear to starboard
Countertop	corian
Sink	stainless steel Double
Cooker	calor gas Force 10 (new 2014)
Oven	calor gas Force 10 (new 2014)
Gas alarm	yes
Microwave/oven combi	yes
Fridge	Front loading
Freezer	Top loading
Hot water system	220V + engine
Water pressure system	electrical
Hot water tap	190 degrees
Crockery	yes
Owners cabin	double bed Centre line double berth
Bed length (m)	2,00 x 1,50
Wardrobe	hanging/drawers/shelves
Toilet	en suite
Toilet system	vacuum
Wash basin	in the bathroom
Shower	en suite
Guest cabin 1	double bed
Bed length (m)	2,00 x 1,40
Wardrobe	hanging/drawers/shelves
Toilet	shared
Toilet system	vacuum
Wash basin	in the bathroom
Shower	shared
Guest cabin 2	bunk bed Bottom bed is a double and can be converted to a sofa
Bed length (m)	2,00
Wardrobe	hanging/drawers/shelves
Washing machine/dryer combi	In FW head



## Extra info

Interior in top conditions

## MACHINERY

No of engines	1
Make	Perkins Sabre
Type	M225TI
HP	228
kW	167.81
Fuel	diesel
Year installed	1999
Maximum speed (kn)	10
Cruising speed (kn)	7
Consumption (l/hr)	6
Range (nm)	2300
Engine hours	1700
Engine cooling system	freshwater heat exchanger
Drive	shaft
Shaft seal	yes
Engine controls	bowden cable
Gearbox	hydraulic ZF HSW 630
Bowthruster	hydraulic 15hp Lewmar
Exhaust	watercooled
Propeller type	feathering Max prop
Propeller blades	3
Propeller shaft material	stainless steel
Shaft lubrication	water
Manual bilge pump	yes
Electric bilge pump	yes
Electrical installation	12 & 24V system
Generator	wet exhaust Nothern Lights 16k VA producing 230v/50Hz 2500w
Running hours generator	1427



<b>Start battery</b>	12V / 110 Ah Acid
<b>Service battery</b>	12 x 2V cells total 810 Ah (Sept. 2022)
<b>Battery monitor</b>	Display
<b>Battery charger</b>	Mastervolt IVO 24V / 20A
<b>Solar panel</b>	2 x 545W Risen solar panels + Victron controller
<b>Diode battery combiners</b>	yes
<b>Shorepower</b>	with cable 110 & 230V
<b>Insulation transformer</b>	Auto transformer for USA/Caribbean 110/115V to 230V - 50/60Hz
<b>Watermaker</b>	Seafresh 160L/hr
<b>Extra info</b>	Engine room has forced ventilation

## NAVIGATION

<b>Compass</b>	Solent
<b>Electric compass</b>	Raymarine Hybrid Touch
<b>Multi control display</b>	Raymarine i70 (NEW 2025)
<b>Depth sounder/log</b>	Raymarine i70 (NEW 2025) (cockpit + nav station)
<b>Windset</b>	Raymarine i70 (NEW 2025) (cockpit + nav station)
<b>Repeater</b>	Raymarine i70 (NEW 2025)
<b>VHF</b>	2 x Raymarine 90 (nav station area & helm)
<b>VHF handheld</b>	ICom
<b>Autopilot</b>	Raymarine p70 (NEW 2025)
<b>Rudder angle indicator</b>	Raymarine p70
<b>GPS</b>	Raytheon & Philips in master cabin
<b>Plotter</b>	Raymarine AXIOM PRO 9 & PRO 12 (BOTH NEW 2025)
<b>Radar/GPS/plotter</b>	Raymarine Hybrid Touch (cockpit + nav station)
<b>Weather receiver</b>	Furuno weather fax
<b>Navtex</b>	Nav4
<b>Wifi antenna</b>	Starlink
<b>Electronic chart(s)</b>	Navionics
<b>EPIRB</b>	yes



Navigation lights	yes
Loudhailer	Raytheon 430 Hailer
Extra info	Full Raymarine new sailing instrument system
Extra info	Starlink (Dish/Cable) new router required

## EQUIPMENT

Fixed windscreen	yes
Sprayhood with grab rail	yes
Fixed hardtop	yes
Bimini	See solar panels
Sun awning	Cockpit enclosure and aft deck
Cockpit cushions	New July/August 2024 including lazarette seating.
Cockpit table	yes
Boarding ladder	stainless steel
Gangway	Teak
Deck shower	Hot & cold
Anchor	Delta 75lbs bow anchor
Anchor chain	80 m chain (12mm) & 55 m rope
Anchor 2	Delta 45lbs kedge
Other ground tackle	Fortress anchor and NEW 2025 - VIKING 25 ANCHOR
Windlass	hydraulic Lewmar (remote control - Loftrans)
Capstan	Stern
Deck wash	Pump
Dinghy	rigid inflatable Whaly 2.7m
Outboard	6 HP mercury 4/stroke & 2.5HP mariner 2/stroke
Outboard support	yes
Davits	stainless steel
Davits controls	manual
Sea railing	wire
Grab rail (superstructure)	stainless steel
Railing side opening gates	yes





Pushpit	yes
Pulpit	yes
Life raft	valise (or bag) 2 Liferrafts + 2 x imesion survival suits 2023
Life raft (pers)	6 & 8
Lifejackets	yes
Safety harness	yes
Lifebuoy	yes
Clearview window	yes
Fenders	yes
Mooring lines	yes
Spare parts	Ample
Alarm system	Intruder alarm
TV	Flatscreen in saloon
TV receiver	Via Starlink
Radio-cd player	yes
Cockpit speakers	yes
Speakers in salon	yes
Clock - barometer	yes
Fire extinguisher	yes
Extinguisher in engine room	yes
Extra info	8 mooring cleats with roller fairleads
Extra info	Prepared to cross the Atlantic however cancelled due to illness.

## RIGGING

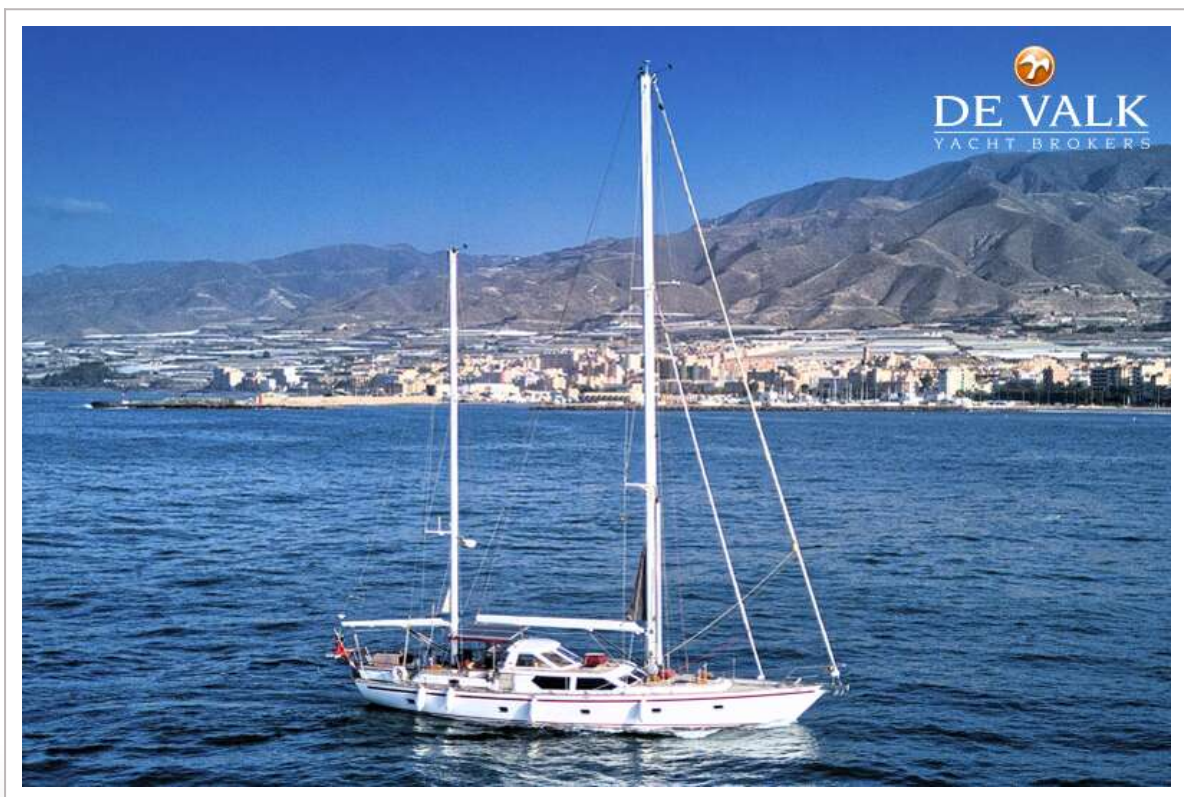
Rigging	ketch-cutter
Standing rigging	wire Stainless steel 1x19 (new 2009)
Brand mast	Z-Spar New mast & mizzen in 2010
Material mast	aluminium coated
Spreaders	yes
Mainsail	Hood Vectran (2008, NEW UV strip 2025)
Cutterstay	Hood Vectran (2000, NEW UV strip 2025)



Mizzen	Hood Vectran full length battened mizzen-winch Lewmar 40 ST 2SP
Genoa	Hood Vectran (2000, NEW UV strip 2025)
Genoa furler	Hydraulic
Cutter furler	Hydraulic
Spinnaker	Hood (multi purpose cruising spinnaker)
Staysail furler	Hydraulic
Yankee	Hood Vectran (2000)
Reefing System	main in-mast furling
Boomvang	hydraulic Navtec
Primary sheet winch	2 x Lewmar 77 EST 2SP
Secondary sheet winch	2 x Lewmar 48 EST 2SP
Halyard winches	Lewmar 54" ST 2SP
Multifunctional winches	halyard/sheet winches Lewmar 44" ST 2SP Lewmar Power Pack Primary, Main & Mizzen
Spi-pole	aluminium Twin poles
Extra info	Twin groove genoa luff (two headsail set for down wind sailing)
Extra info	Inner forestay 1400 Dyneema

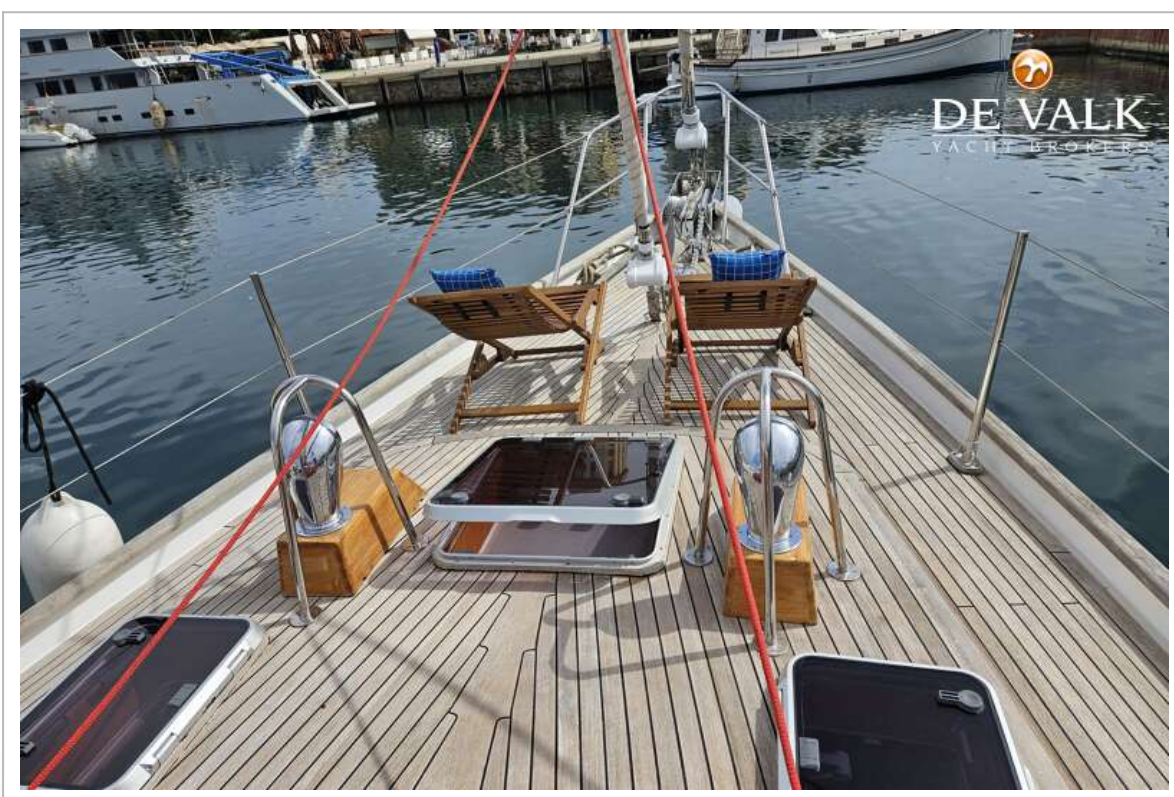
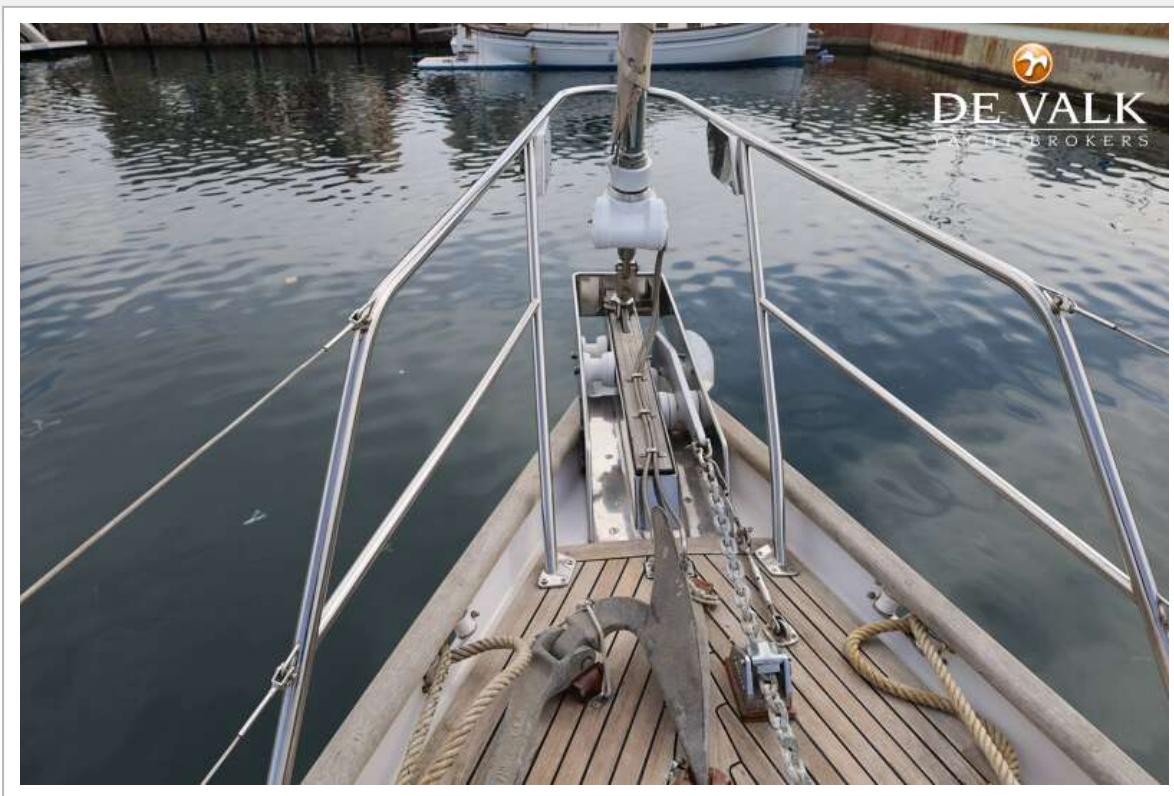


# PREMIER DIXON 62

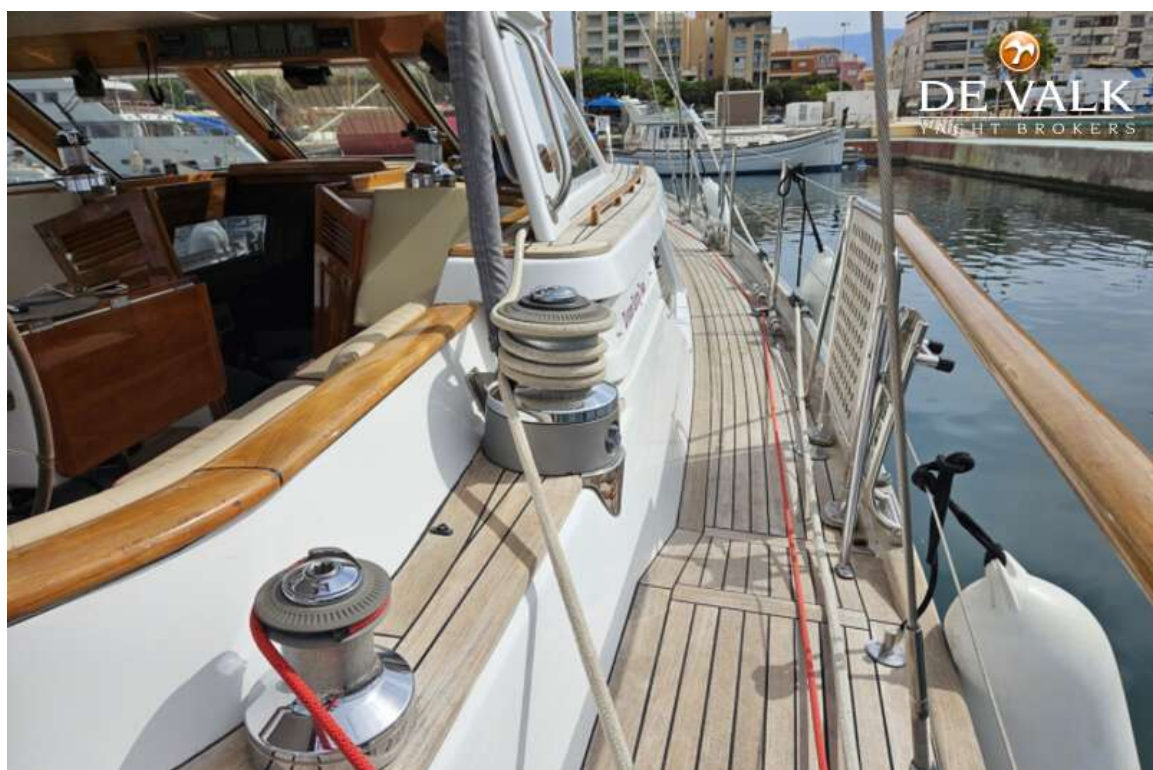




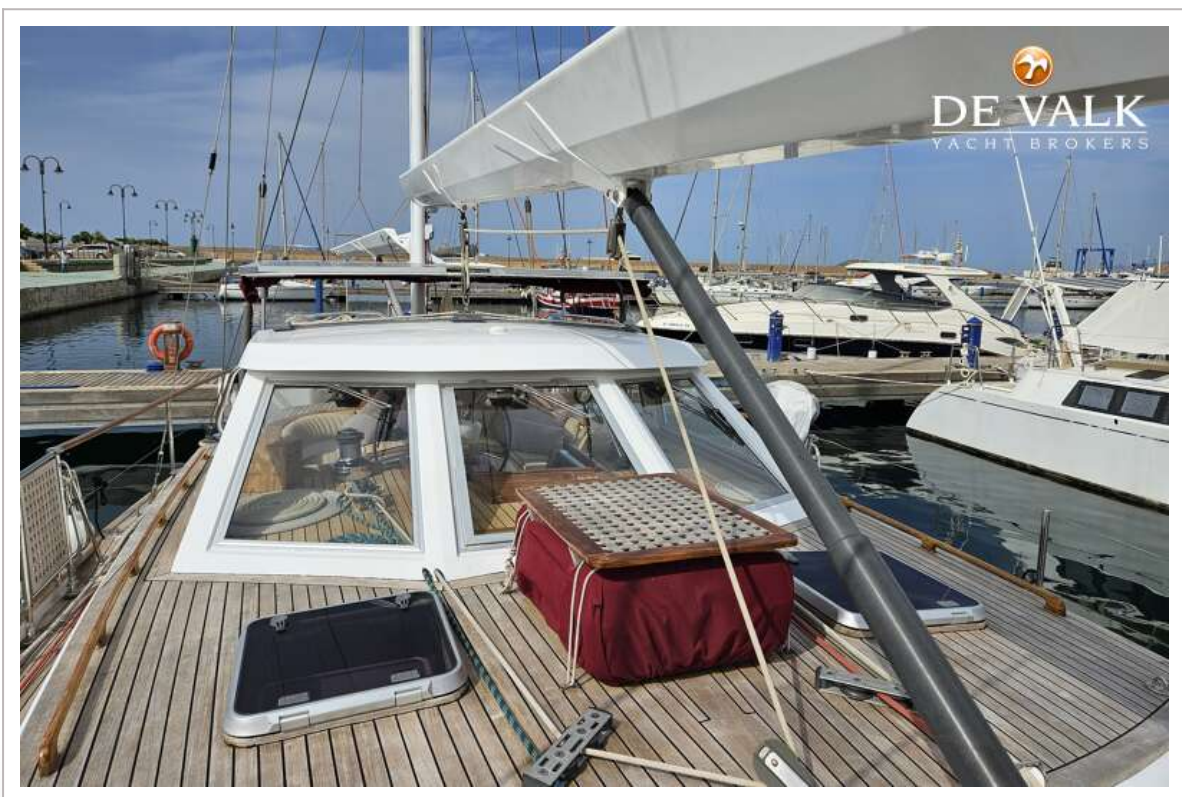
# PREMIER DIXON 62













## PREMIER DIXON 62

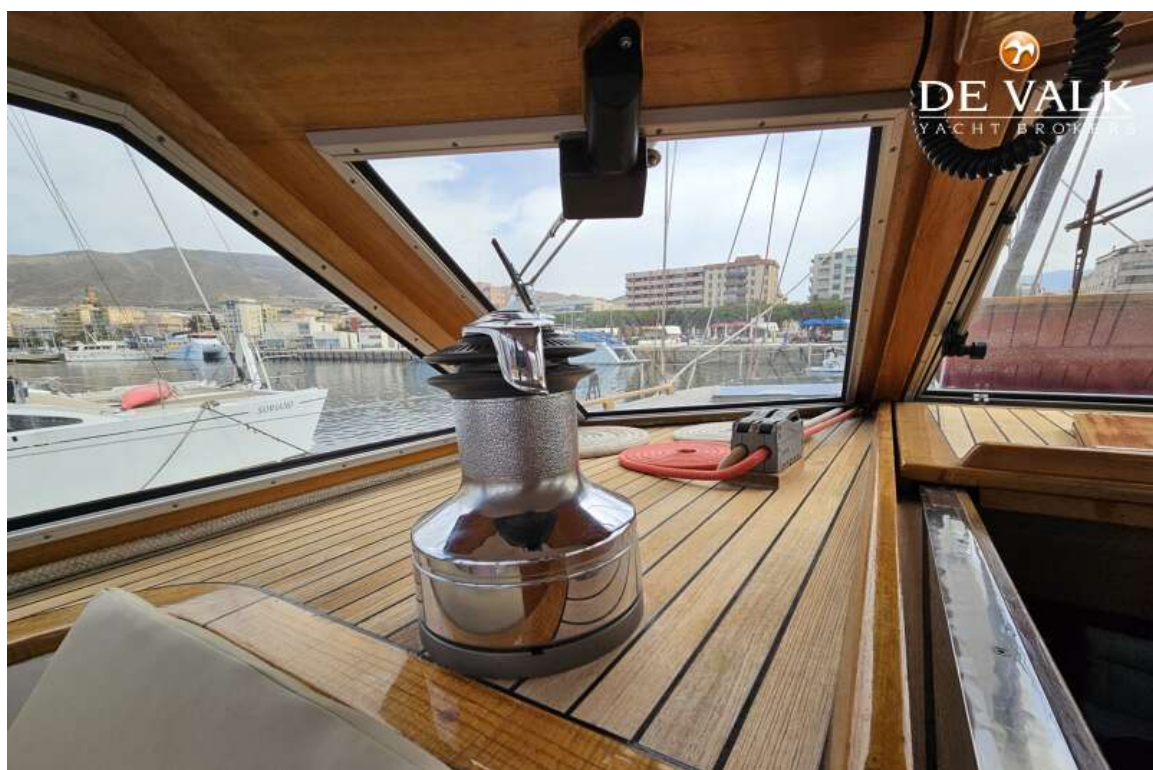


## PREMIER DIXON 62



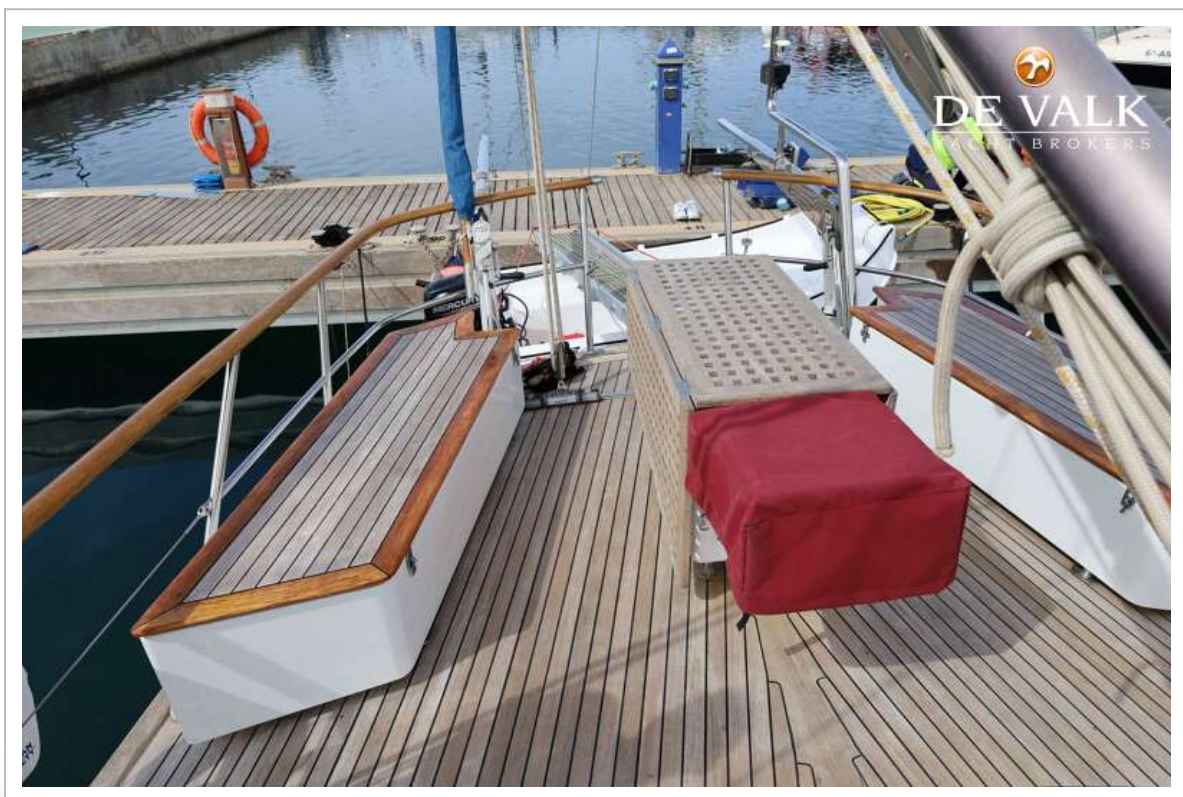


## PREMIER DIXON 62





## PREMIER DIXON 62









## PREMIER DIXON 62

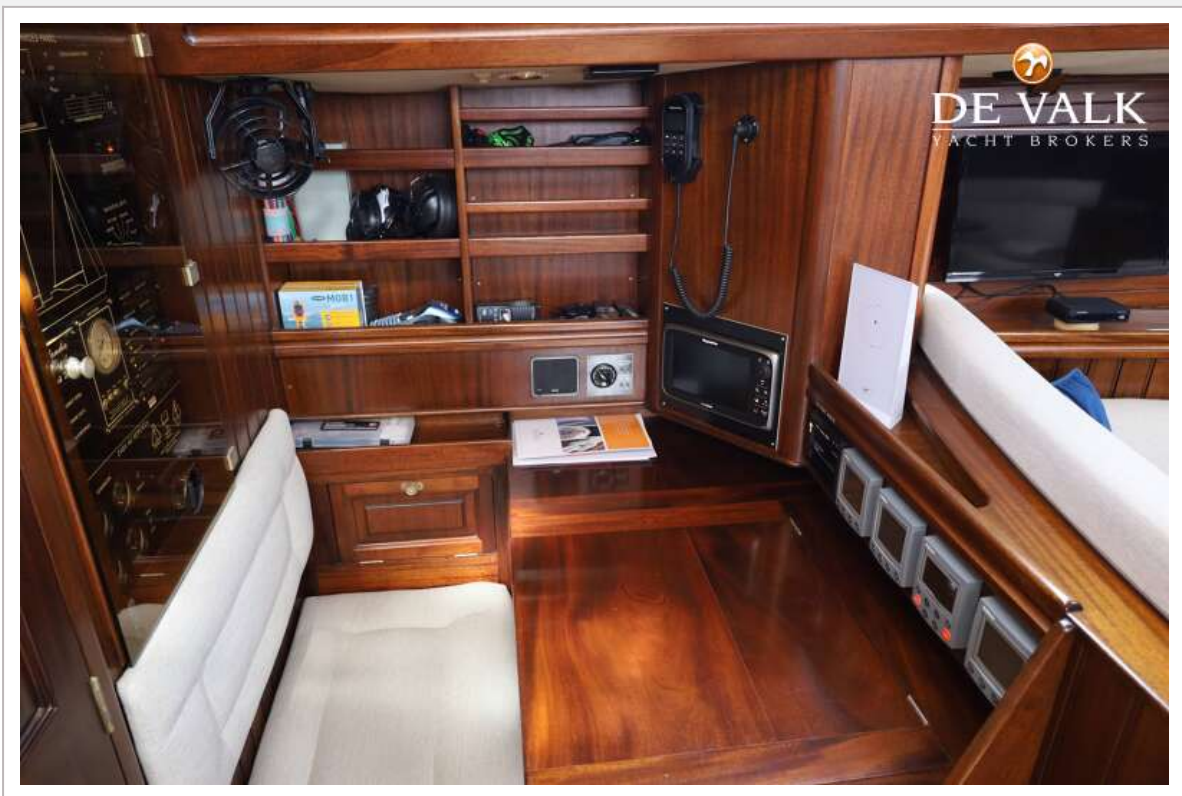




## PREMIER DIXON 62



# PREMIER DIXON 62





# PREMIER DIXON 62

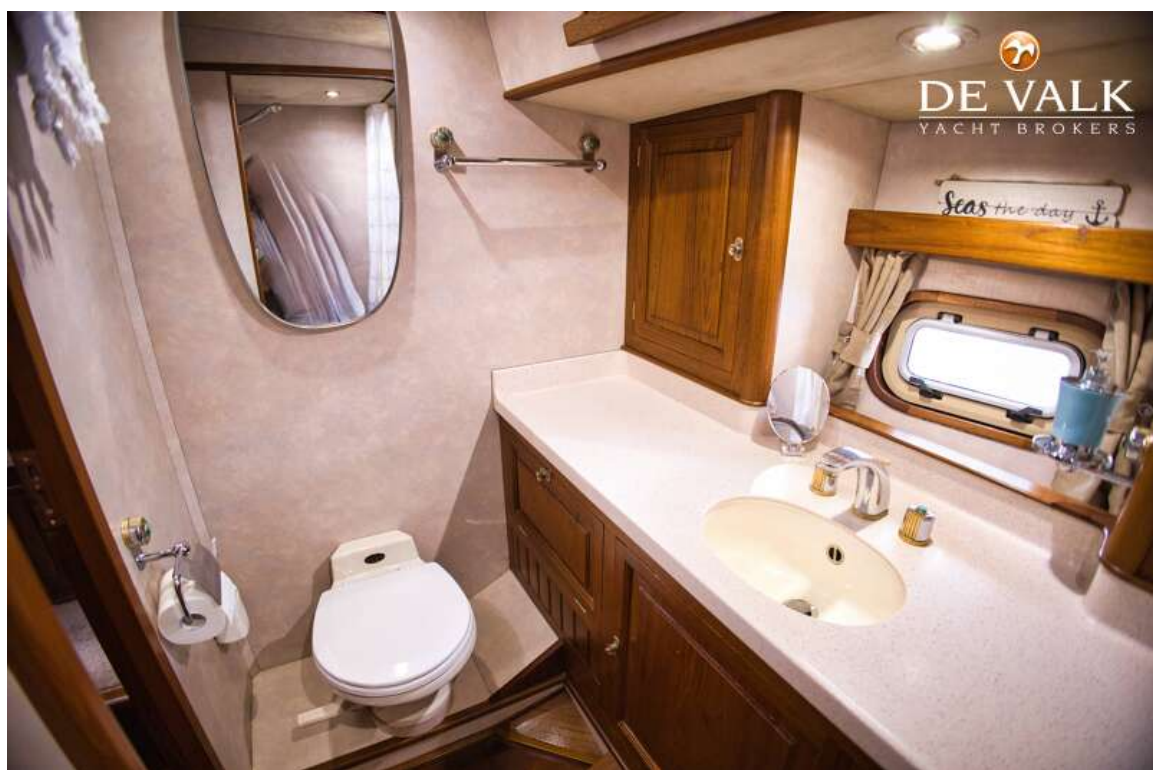


## PREMIER DIXON 62

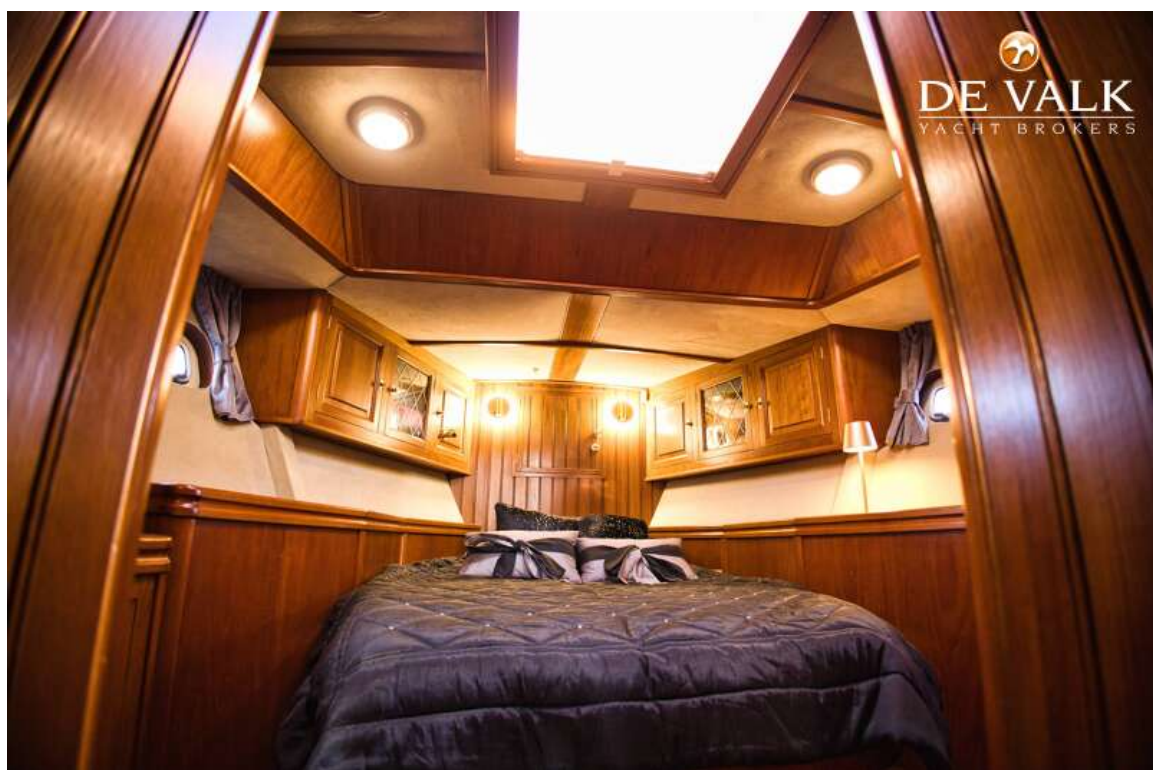




## PREMIER DIXON 62

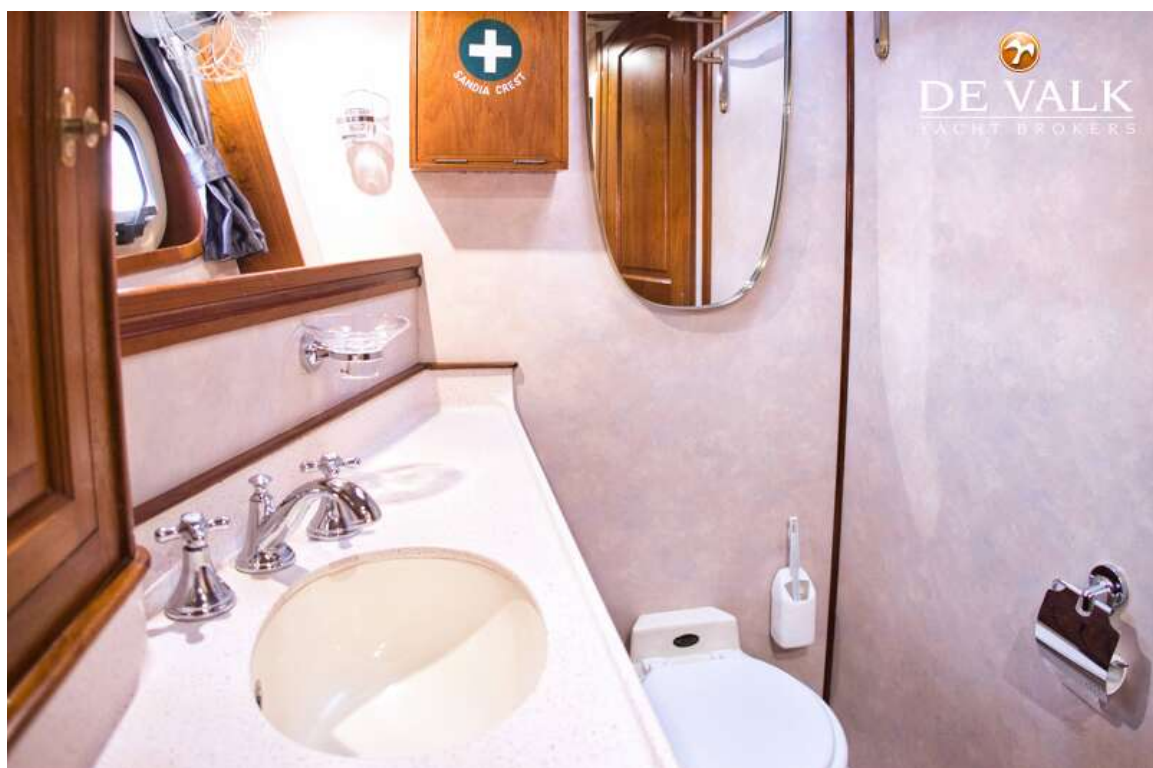


## PREMIER DIXON 62

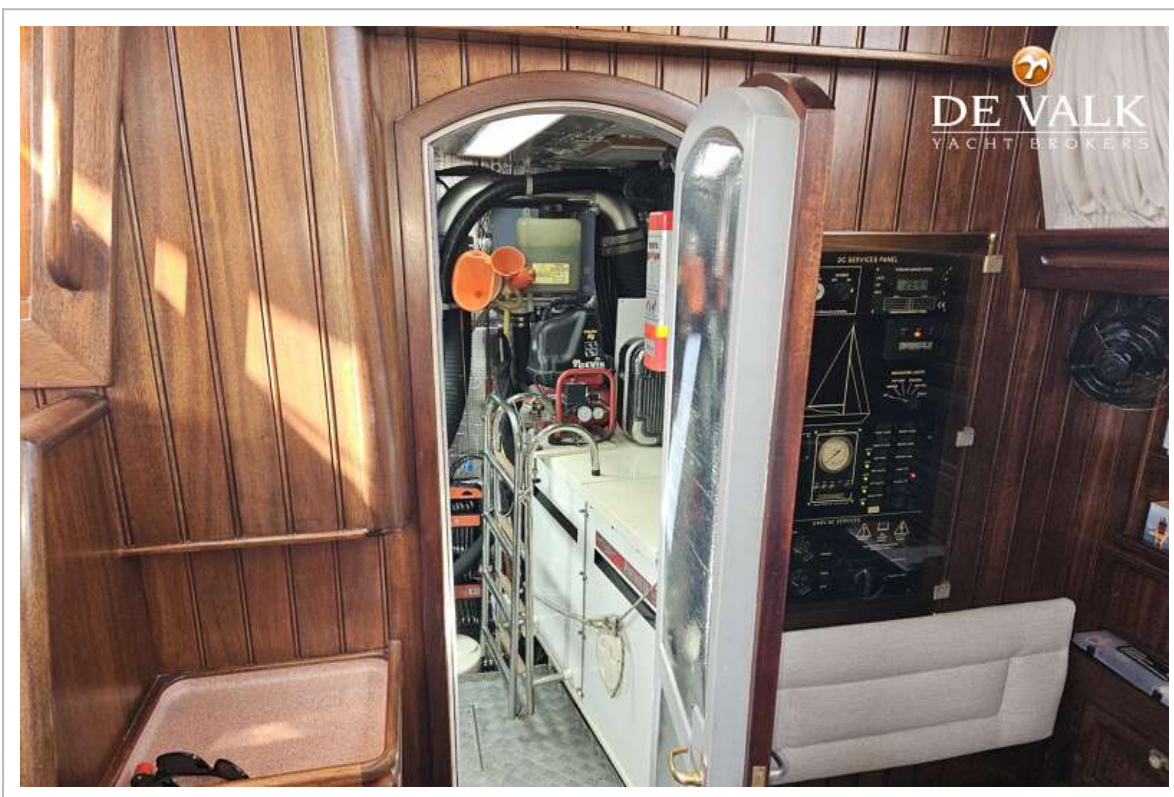
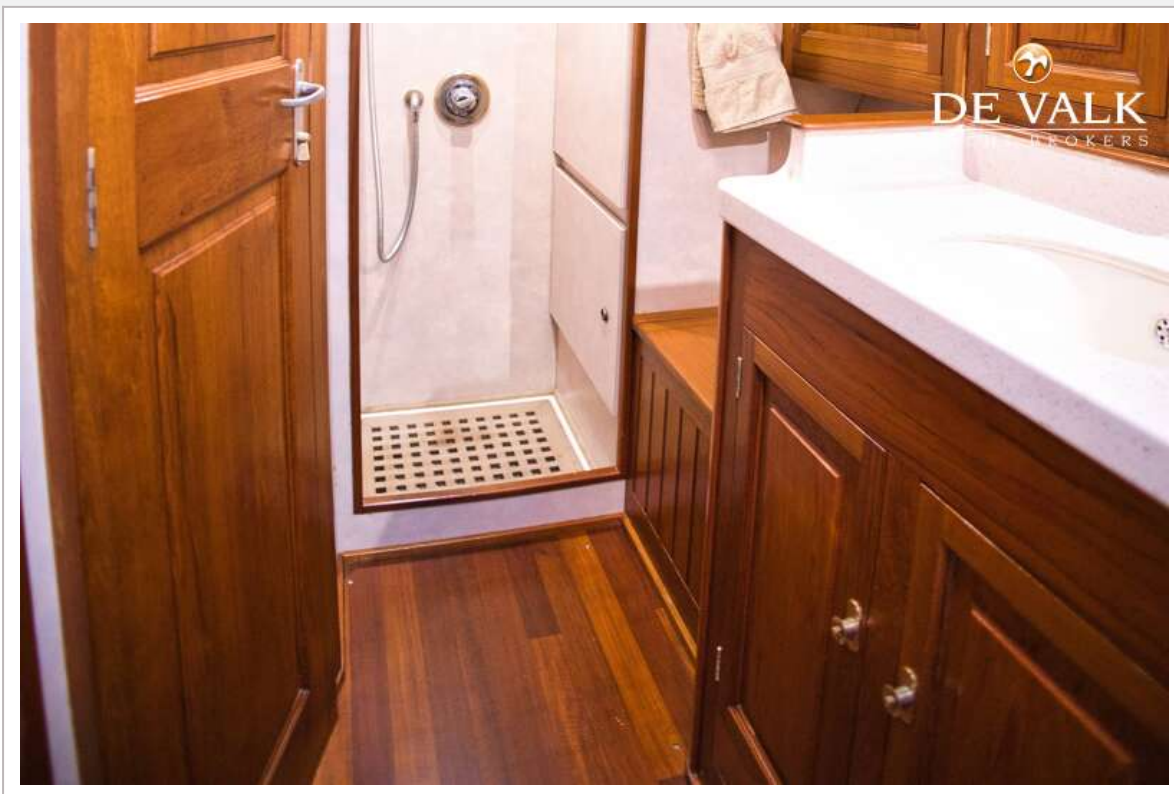




## PREMIER DIXON 62



## PREMIER DIXON 62





## PREMIER DIXON 62

