



RO/PAX DOUBLE ENDED FERRY 72 M



# RO/PAX DOUBLE ENDED FERRY 72 M

## BROKER'S COMMENTS

RO-RO & Passengers Ferry constructed in 2004 and she has been used as Land Craft for local connection between an island and the mainland. Very well maintained by the owner who has been the same since new. Ferry boat in top condition as if new. PAX capacity 406. Cars: 80

*Sofia Ilia-Salvanou*

## SPECIFICATIONS

<b>Dimensions</b>	73.00 x 15.00 x 2.04 (m)	<b>Builder</b>	KANELLOU BROS PERAMA
<b>Built</b>	2004	<b>Cabins</b>	
<b>Material</b>	Steel	<b>Berths</b>	
<b>Engine(s)</b>	4 x IVECO AIFO C13 ENT M5 diesel	<b>Hp/Kw</b>	4 x 2,000.00 (hp), 1,472.00 (kw)
<b>Asking price</b>	€ 3.300.000 (VAT Not paid)	<b>Lying</b>	elsewhere / Not at sales office

## CONTACT

<b>Sales office</b>	De Valk Corfu	<b>Telephone</b>	(+30) 266 111 8095
<b>Address</b>	New Port of Corfu, near Gouvia Marina 490 83 Corfu GR	<b>E-mail</b>	corfu@devalk.nl

## DISCLAIMER

These particulars are given in good faith as supplied but cannot be guaranteed.



# RO/PAX DOUBLE ENDED FERRY 72 M

## GENERAL

Model	RO/PAX DOUBLE ENDED FERRY 72 M
Type	motor yacht
LOA (m)	73,00
LWL (m)	55,00
Beam (m)	15,00
Draft (m)	2,04
Year built	2004
Builder	KANELLOU BROS PERAMA
Country	Greece
Gross tonnage	885 T
Net tonnage	275
Hull material	steel
Fuel tank (litre)	yes
Freshwater tank (litre)	yes
Blackwater tank (litre)	21,34 M2
Wheel steering	yes
Extra info	4 X 15 Kw WINCHES: 2 for anchors & 2 for ramps
Extra info	Fuel consumption: at 1000 RPM: 100Lt /h, at 1200 RPM: 180 Lt/h,
Extra info	At 1400 RPM: FUEL CONSUMPTION 220 Lt/h, at 1600 RPM: 260 Lt/h

## ACCOMMODATION

Crew cabin	5 (2 single plus 3 cabins with twin beds)
Air-conditioning	4 units (3 for the saloon plus 1 for cabins and helm station)

## MACHINERY

No of engines	4
Make	IVECO
Type	AIFO C13 ENT M5



# RO/PAX DOUBLE ENDED FERRY 72 M

HP	2000
kW	1472
Fuel	diesel
Year of overhaul	Nr 2 engine on 15.02.2024
Maximum speed (kn)	12
Cruising speed (kn)	7
Consumption (l/hr)	332
Engine hours	13.600
Engine cooling system	FUEL CONSUMPTION at 2100 RPM: 332 Lt/h
Drive	Z-drive
Propeller type	4 X SST2000 (SCHOTTEL)
Electric bilge pump	yes
Generator	380V
Generator 2	X 2 (380V X20
Batteries	yes
Extra info	Engs Hrs: N1: 33.400 h Nr 2 33.100h, Nr 3 14.000 h Nr 4:13.600h
Extra info	Generators x3. Nr1 21500 hours, Nr2 8800 h, Nr3 30559hours
Extra info	4 x 5,5 Kw pumps for general use & for fire

## NAVIGATION

Compass	RITCHIE POWERDAMP-magnetic
Depth sounder	KODEN CVS 118 X1
VHF	ICOM x 2 (IC M330 & IC M323)
Autopilot	VETH
Radar	KODEN MDC
GPS	GEONAV X 1
Plotter	GEONAN 6 SUNSHINE X 1
AIS transponder	yes
Navigation lights	yes

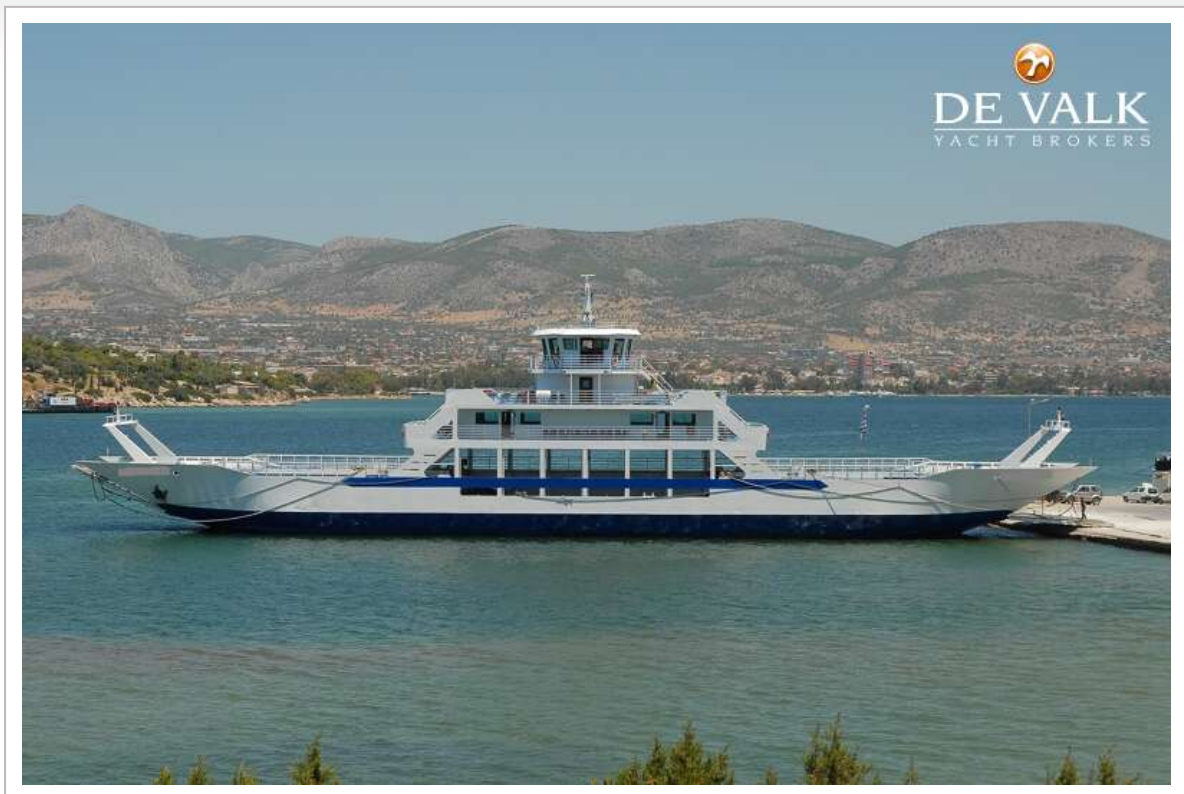


## EQUIPMENT

Anchor	yes
Anchor chain	yes
Life raft	13 x 20 pax each
Life raft (pers)	container 260
Lifejackets	448 for adults plus 40 for children
Lifebuoy	yes
Fenders	yes
Mooring lines	yes
Spare parts	yes
Tools	yes
Fire extinguisher	Portable: 25 extinguishers
Extra info	2 marine sea water pumps for fire fighting
Extra info	Means of stopping fuel and air in case of an emergency
Extra info	2 diesel pumps x 0,88Kw, 2 water pumps x1,7Kw & 1x 0,88 MARPOL

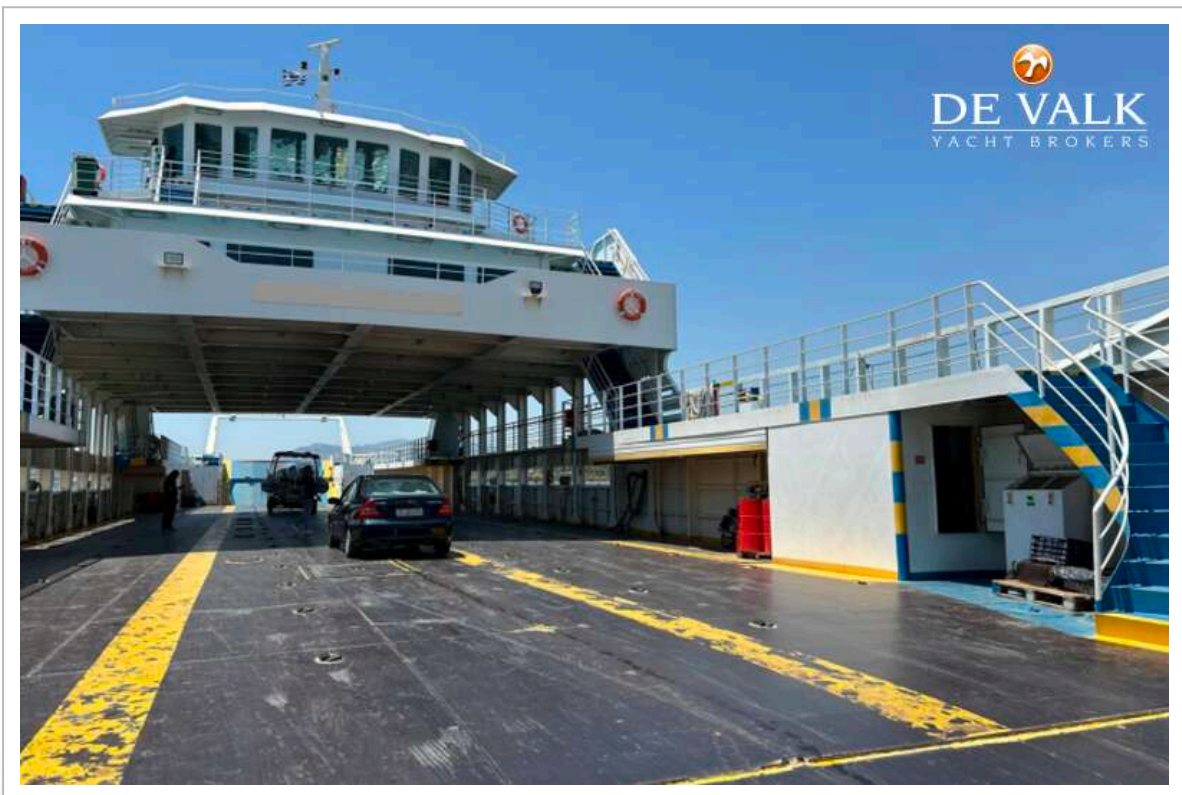


# RO/PAX DOUBLE ENDED FERRY 72 M

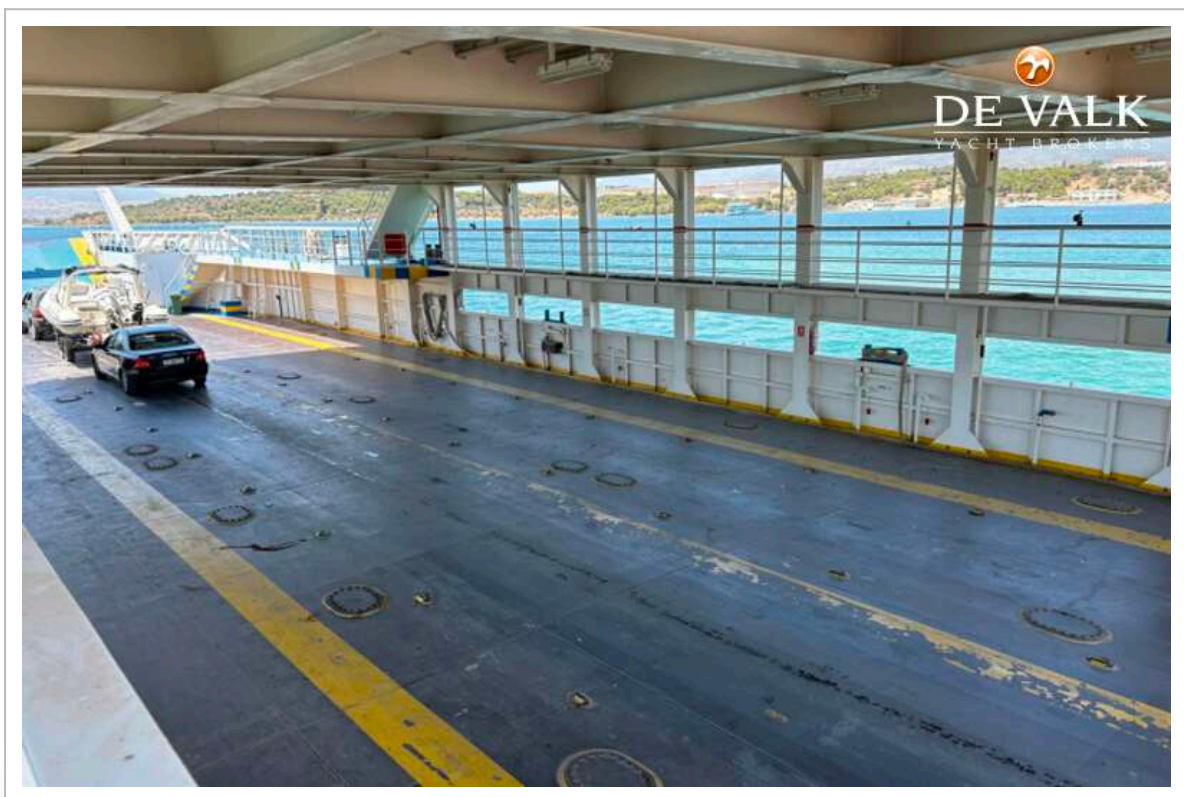
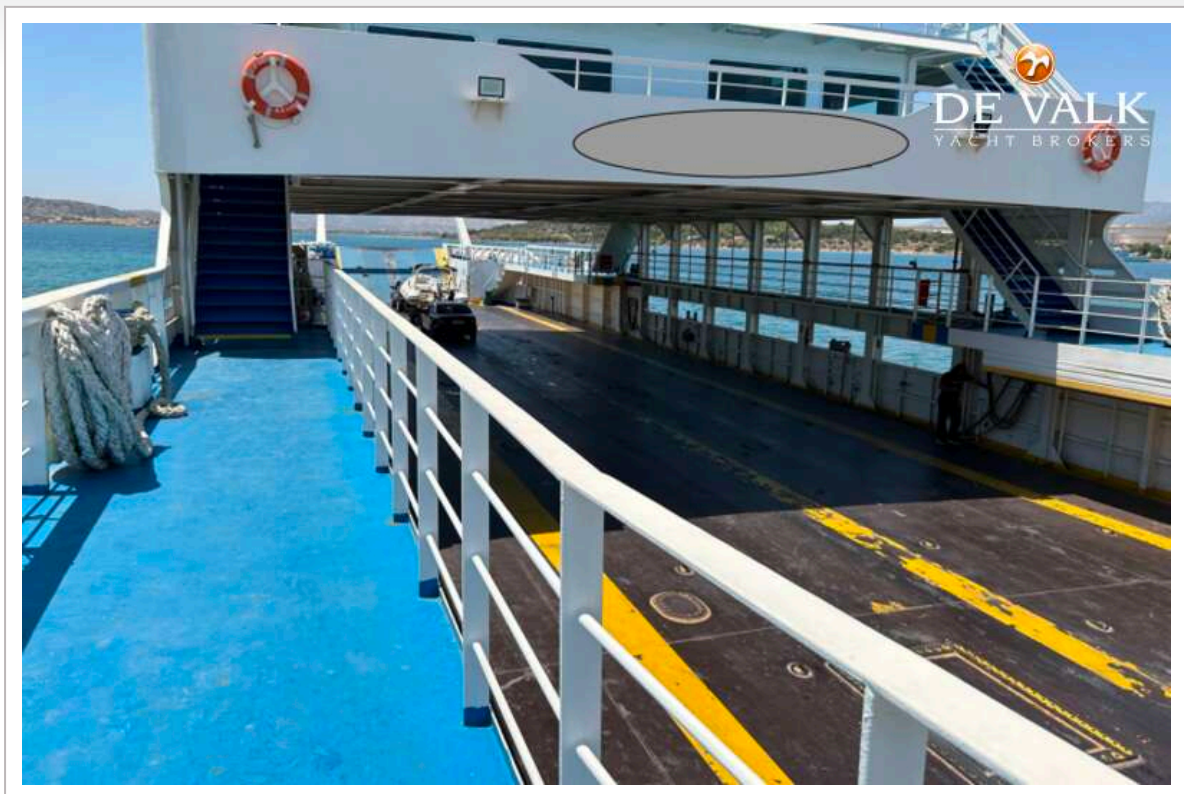




# RO/PAX DOUBLE ENDED FERRY 72 M



# RO/PAX DOUBLE ENDED FERRY 72 M



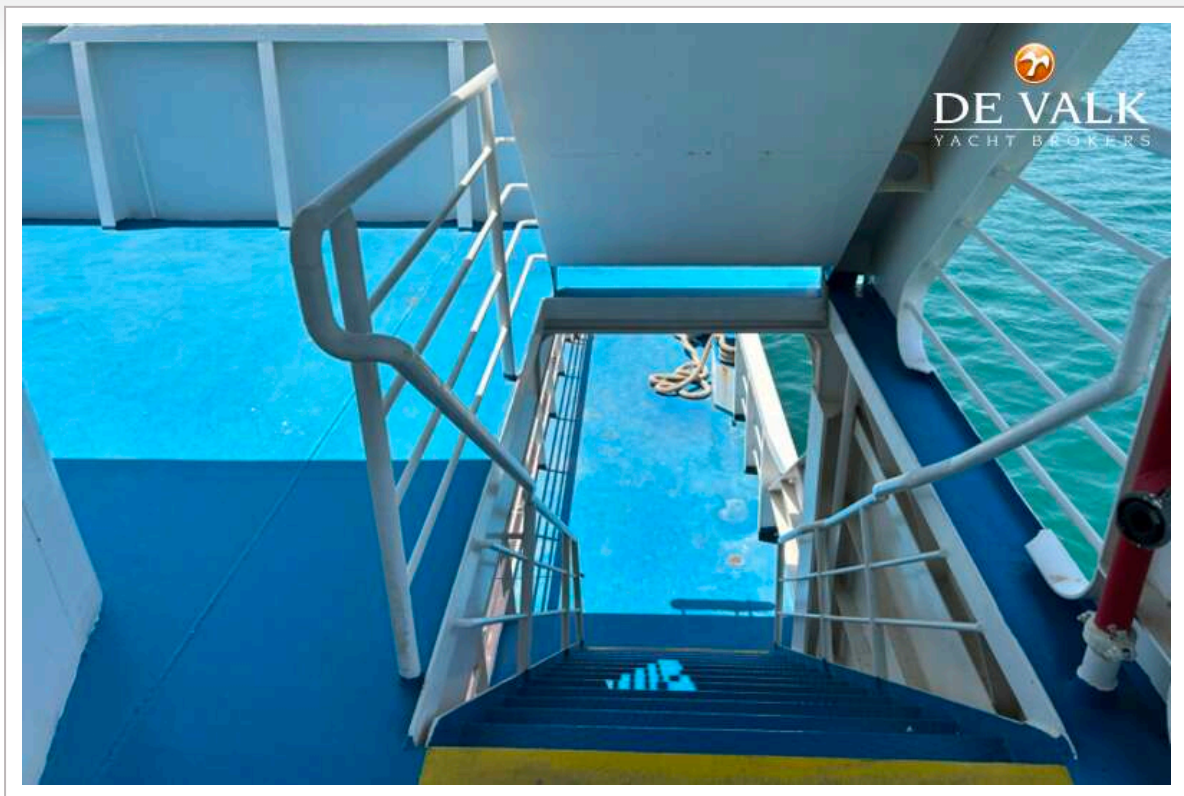


# RO/PAX DOUBLE ENDED FERRY 72 M



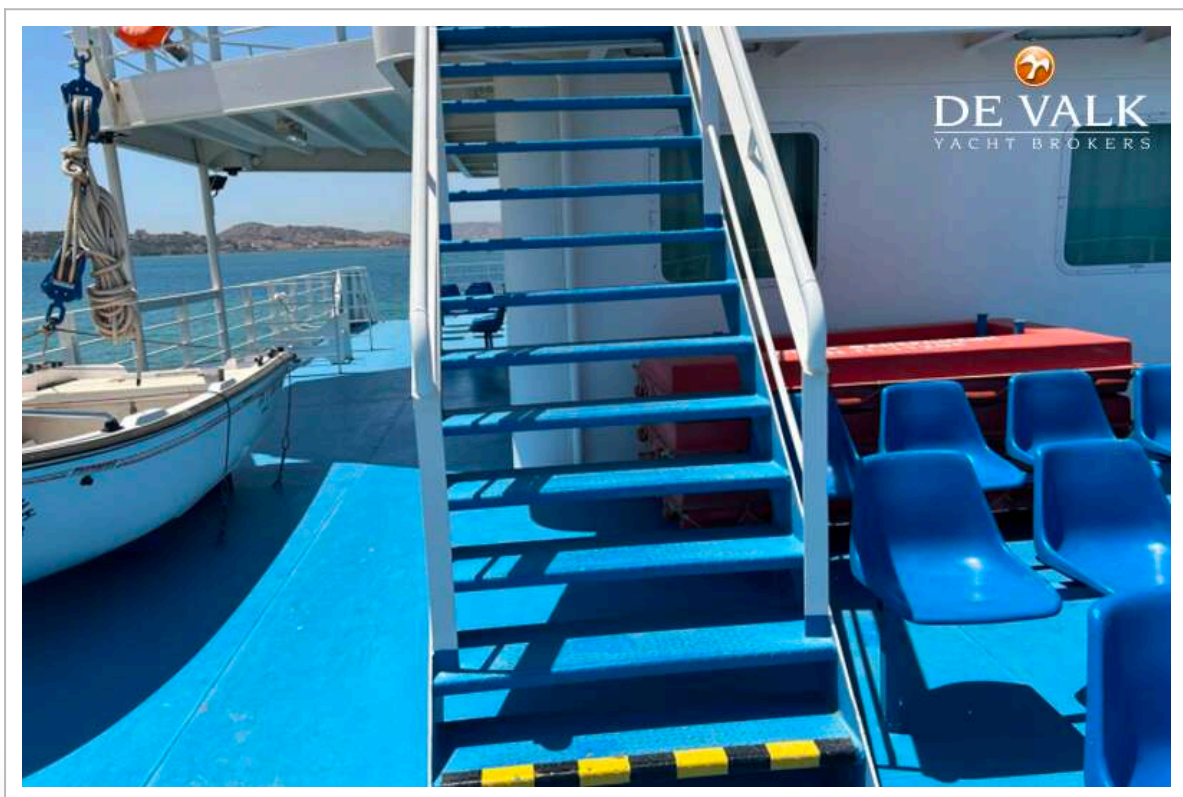
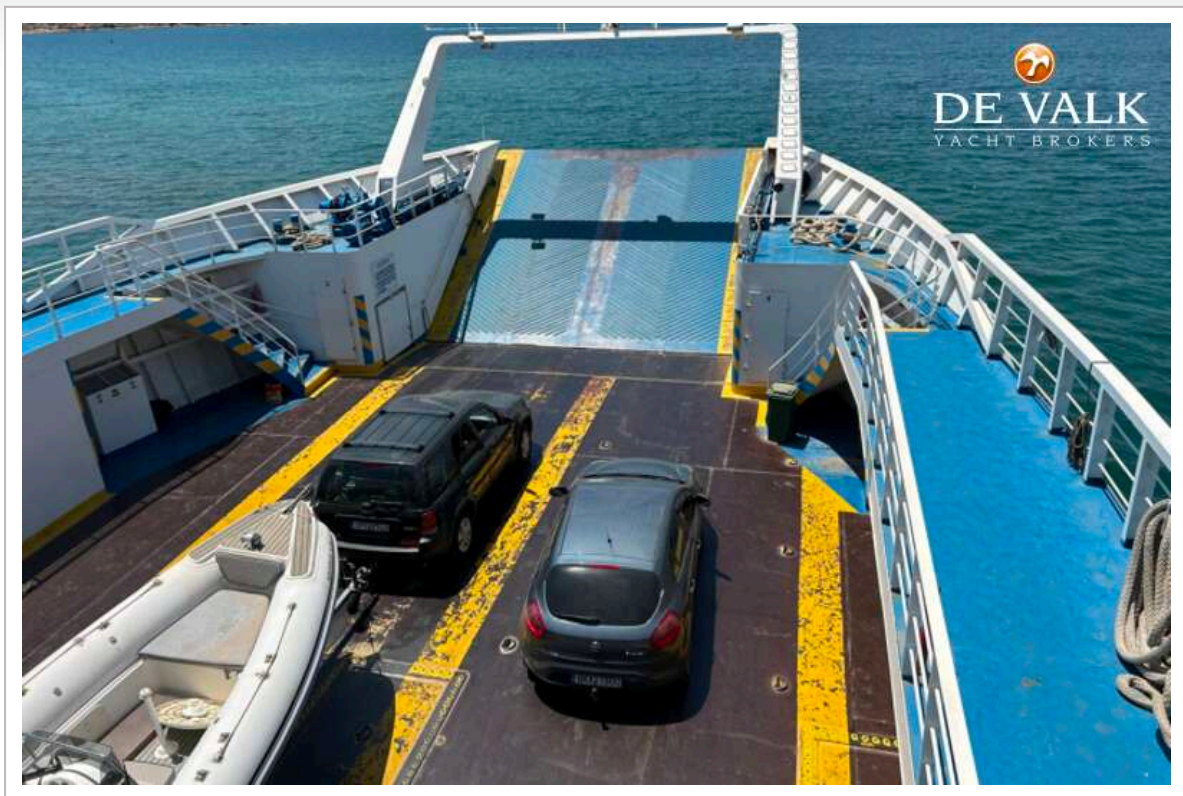


# RO/PAX DOUBLE ENDED FERRY 72 M

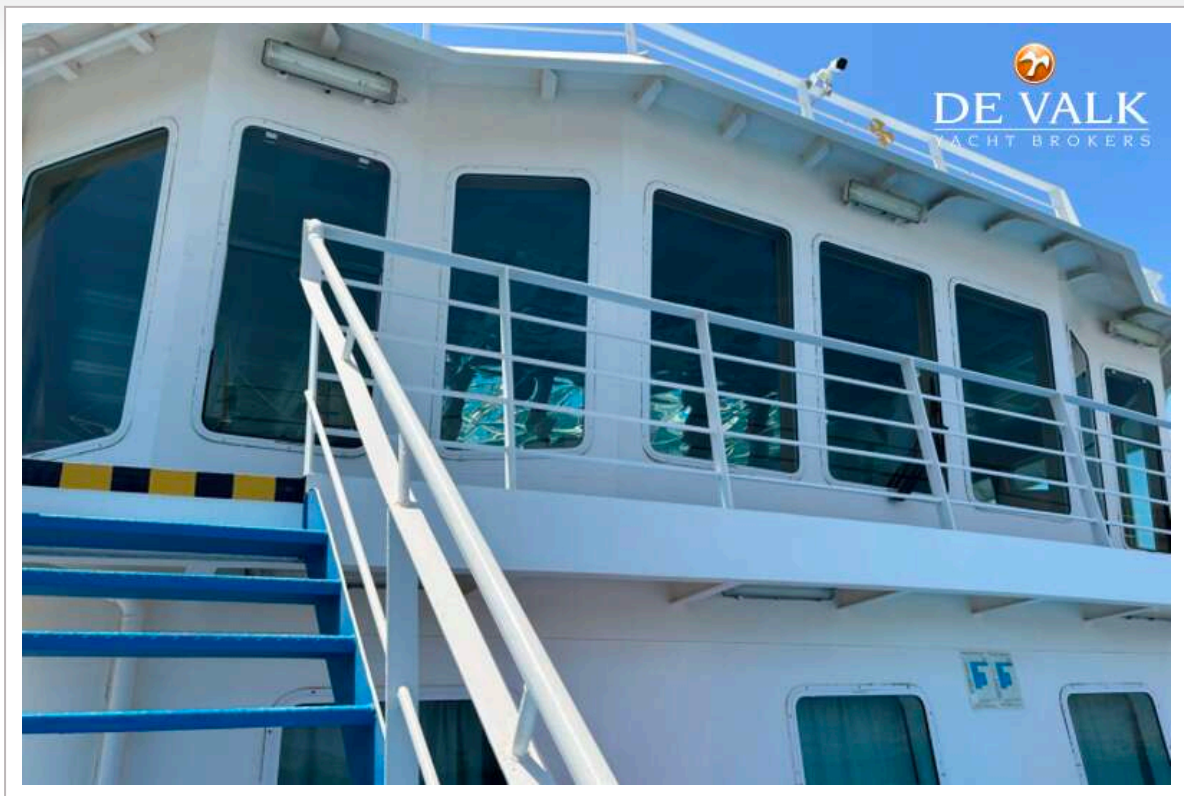




# RO/PAX DOUBLE ENDED FERRY 72 M

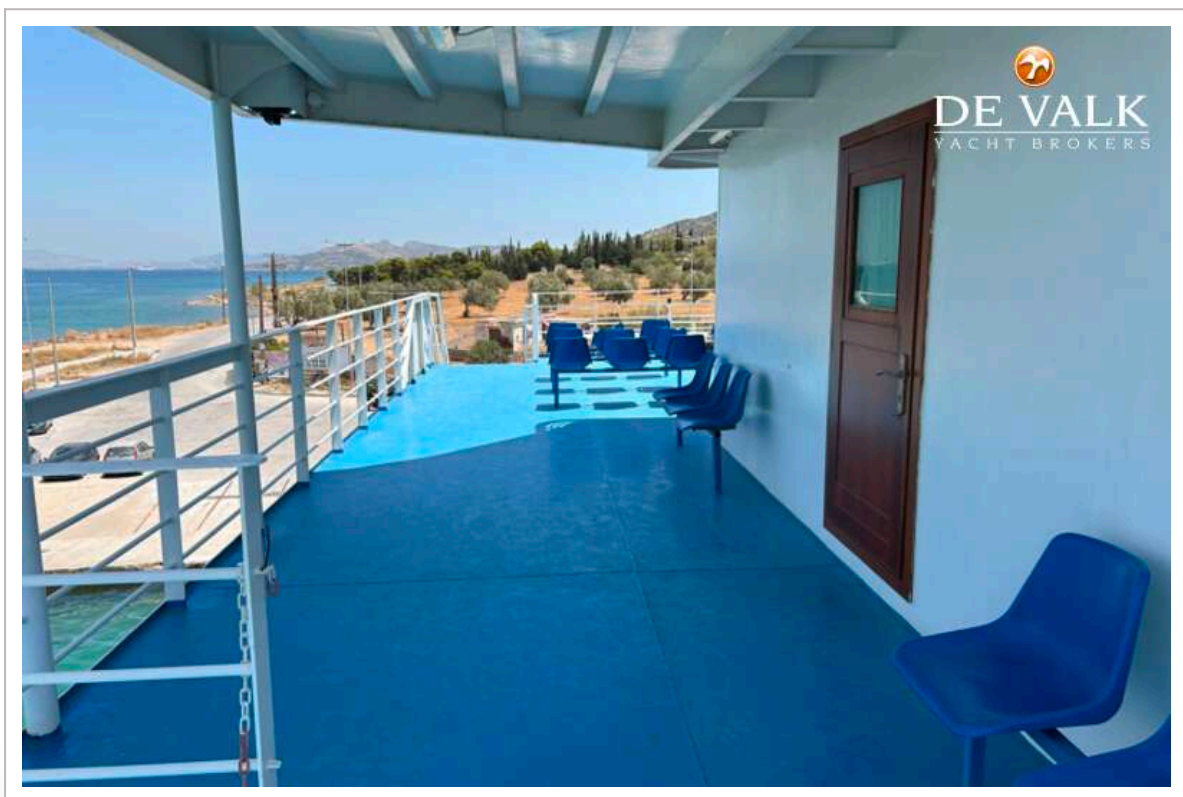
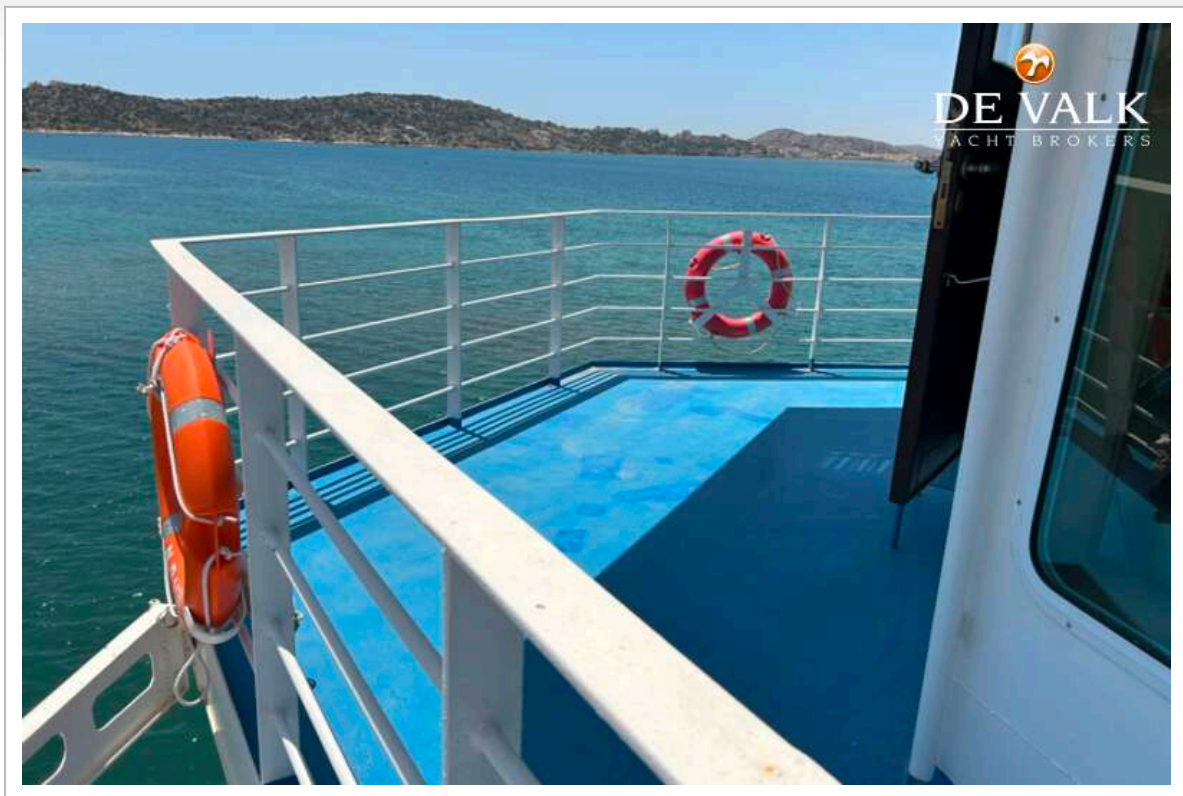


# RO/PAX DOUBLE ENDED FERRY 72 M

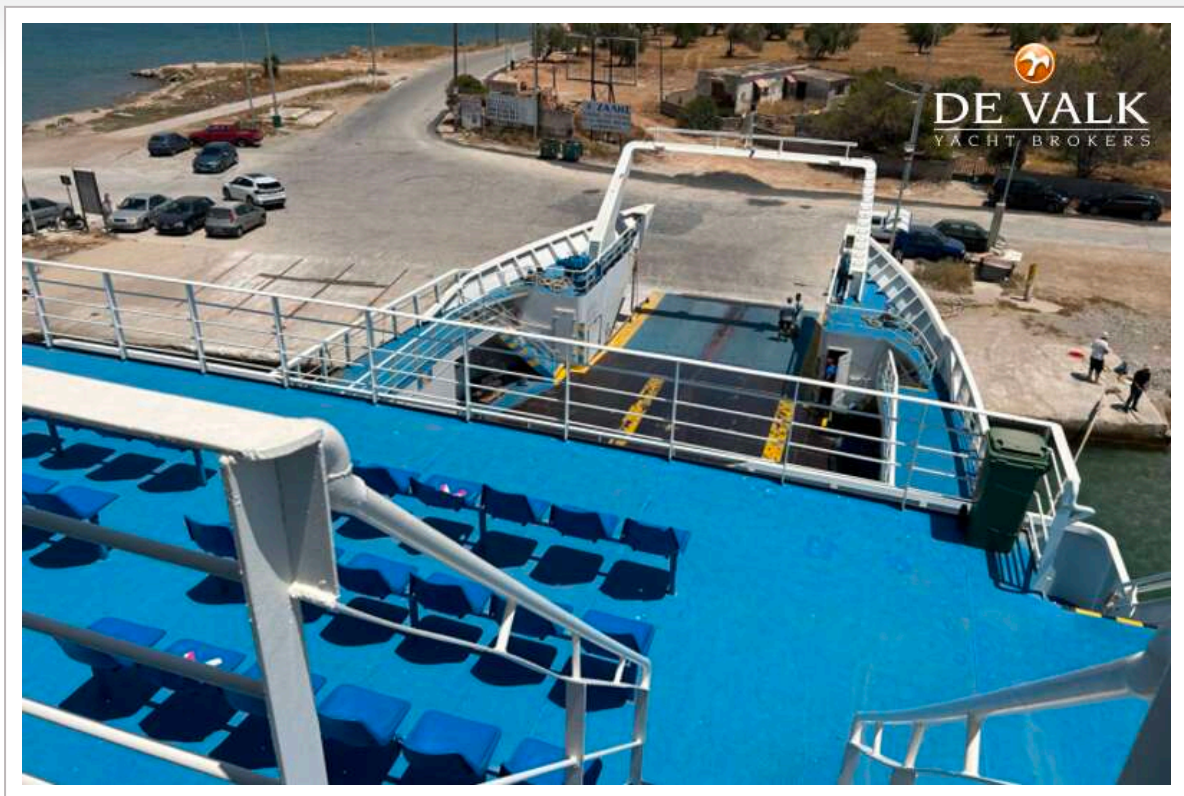




## RO/PAX DOUBLE ENDED FERRY 72 M

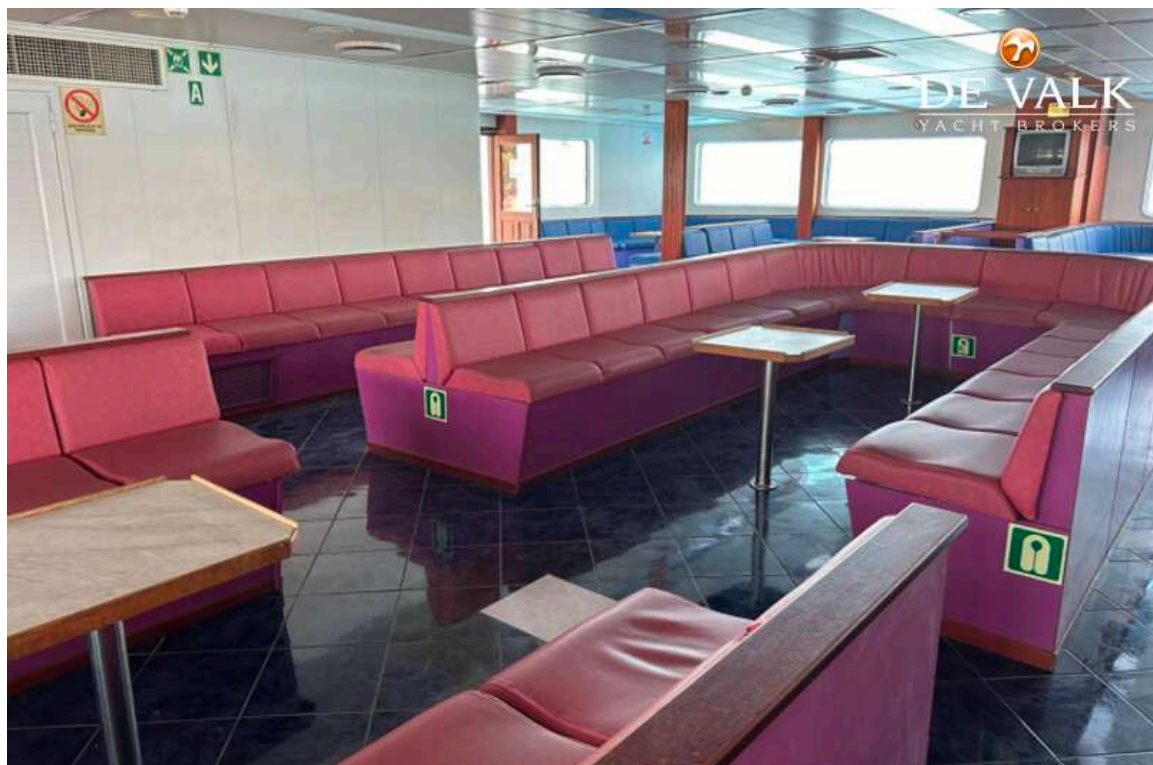


# RO/PAX DOUBLE ENDED FERRY 72 M

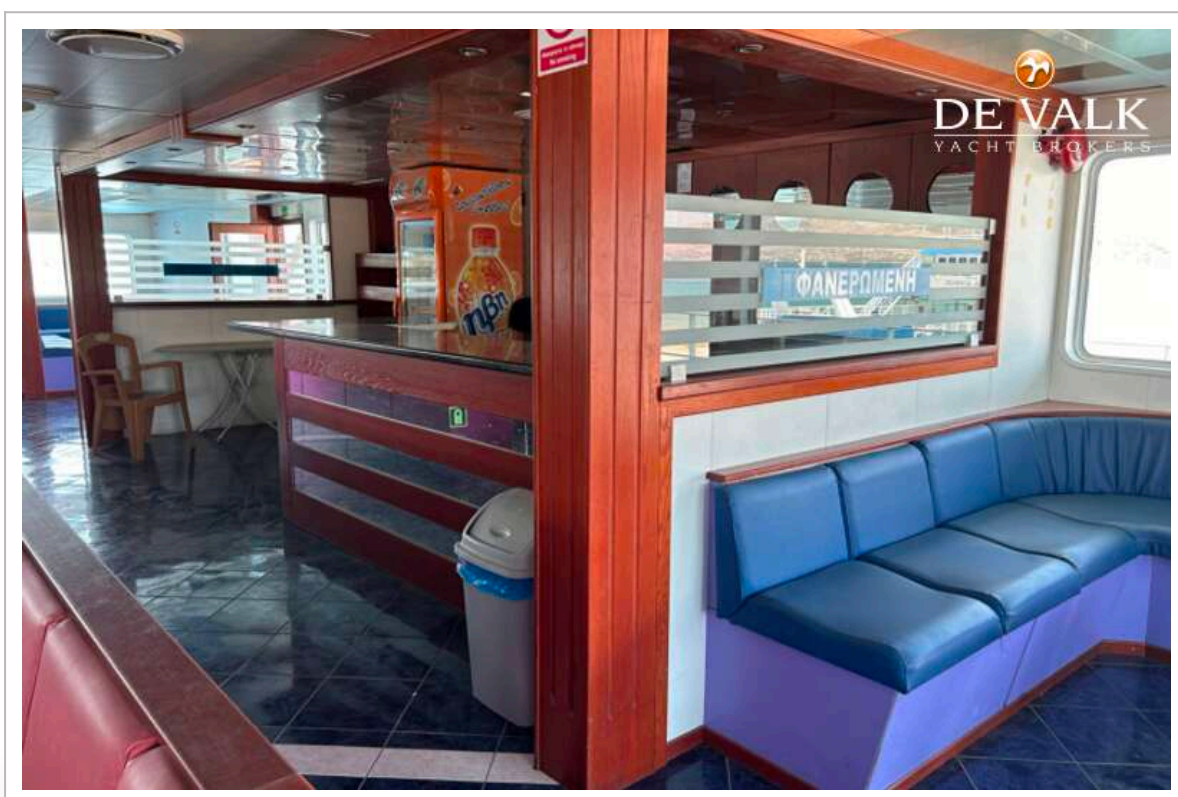
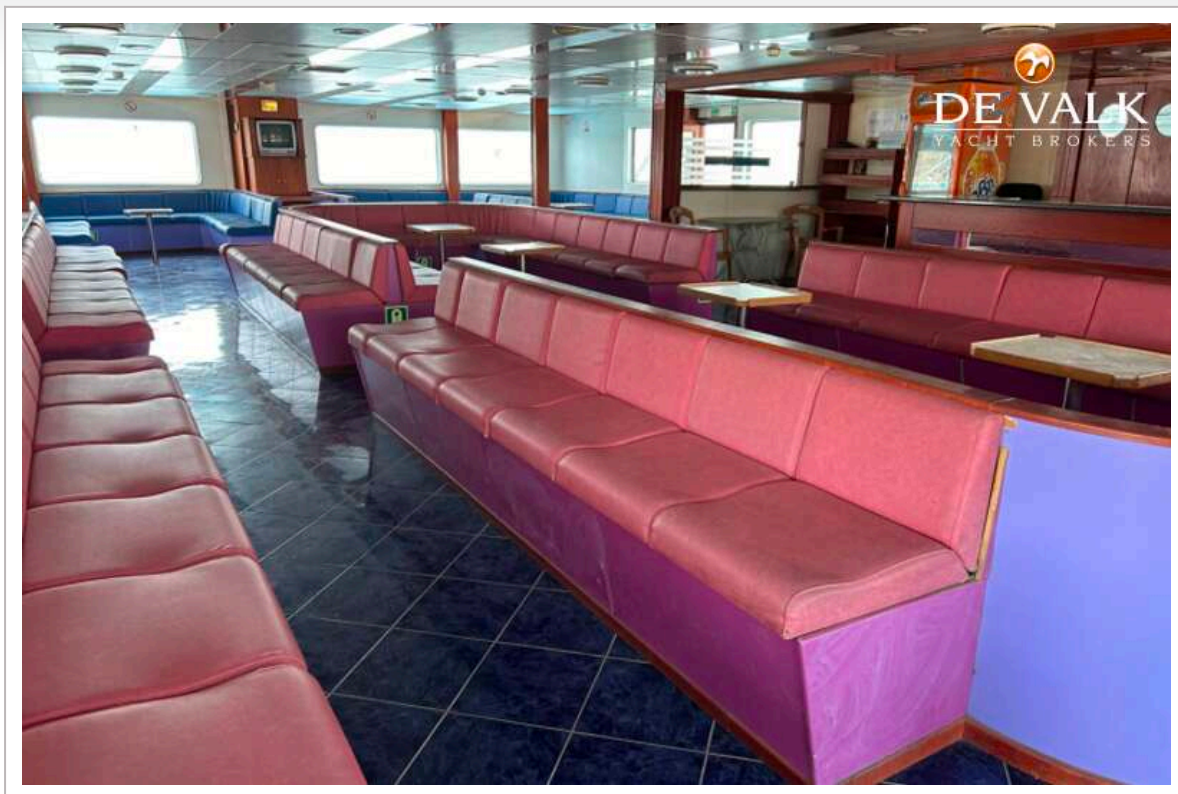




# RO/PAX DOUBLE ENDED FERRY 72 M

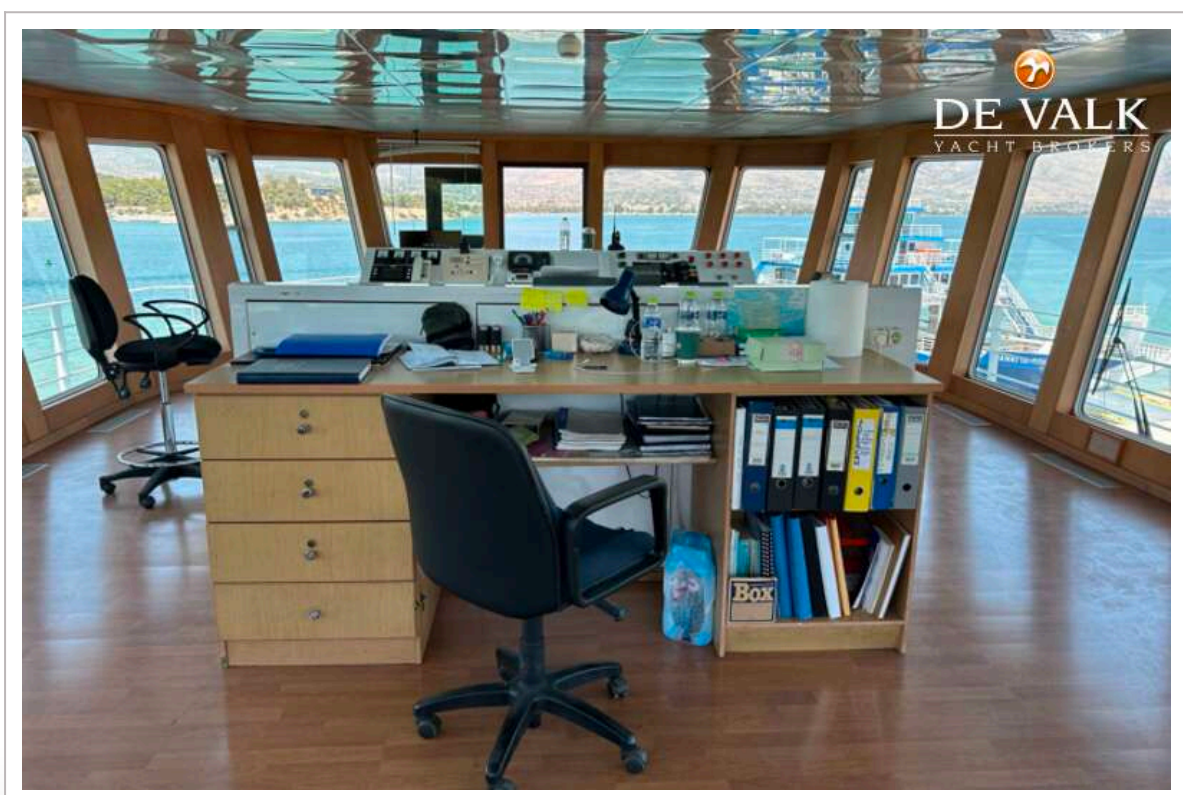
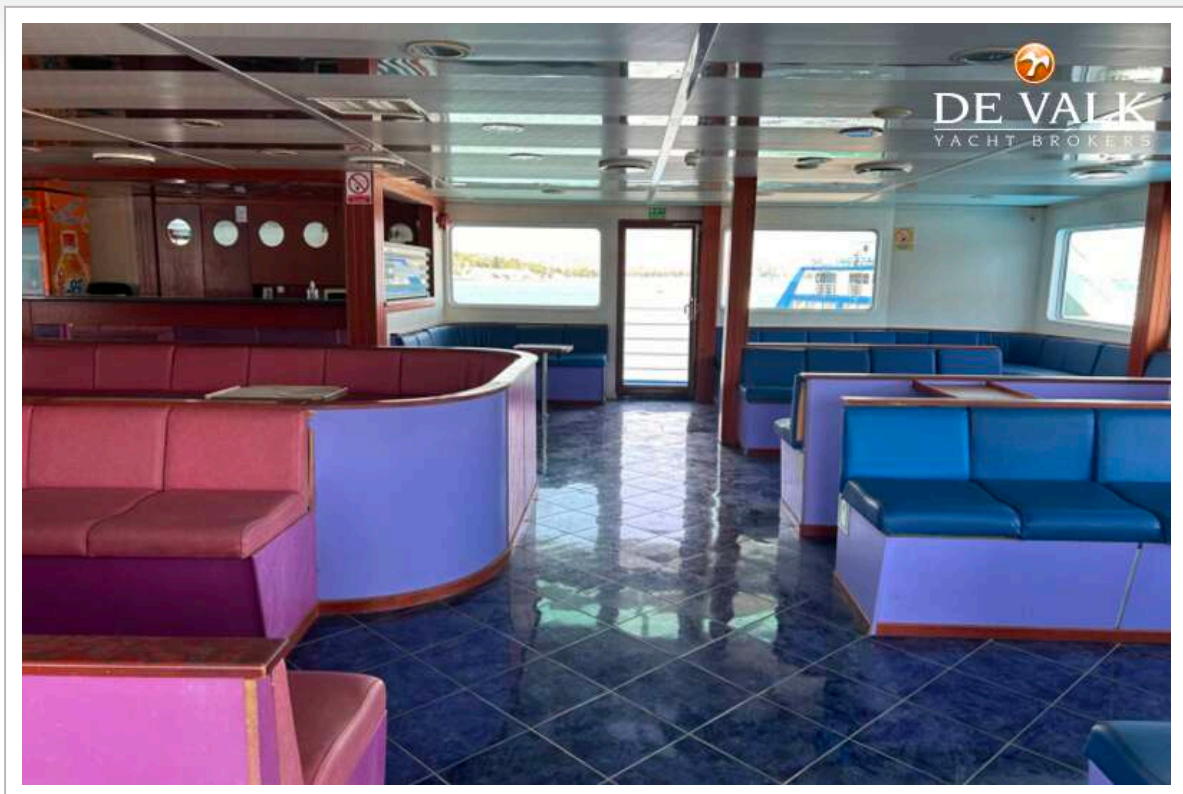


## RO/PAX DOUBLE ENDED FERRY 72 M

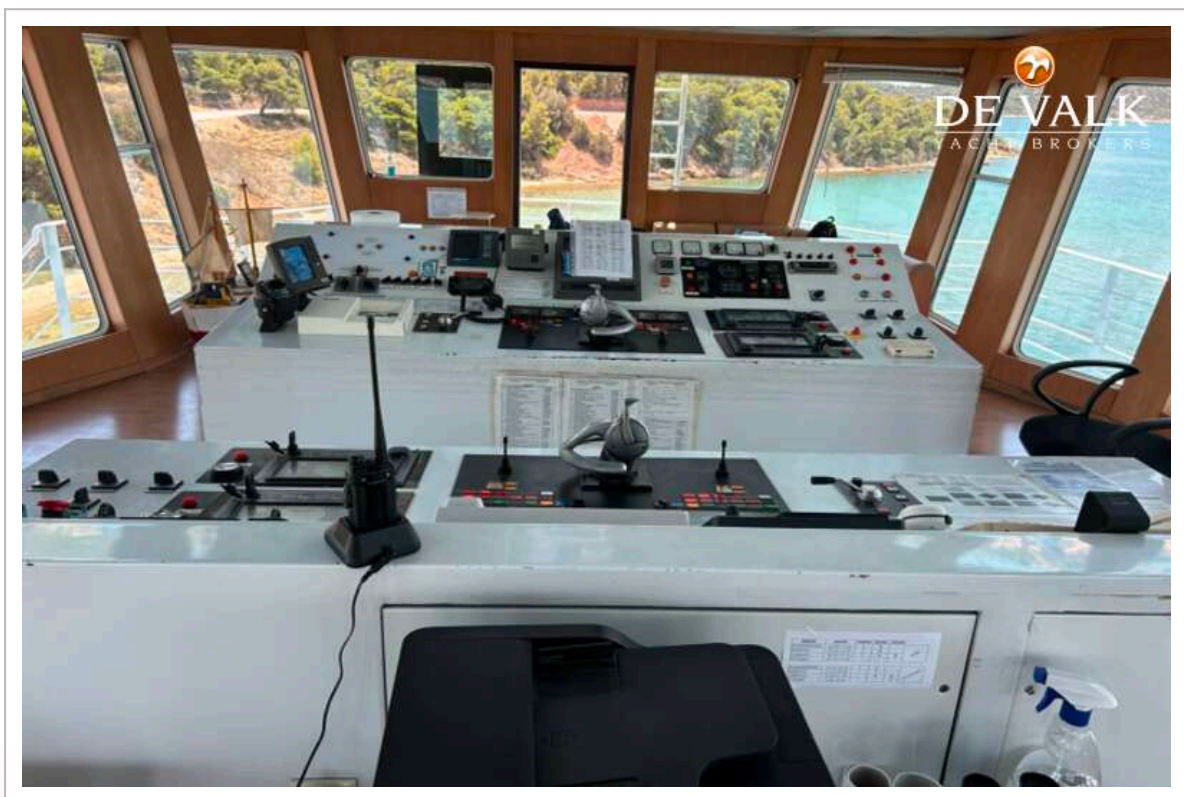




# RO/PAX DOUBLE ENDED FERRY 72 M



# RO/PAX DOUBLE ENDED FERRY 72 M





# RO/PAX DOUBLE ENDED FERRY 72 M



# RO/PAX DOUBLE ENDED FERRY 72 M



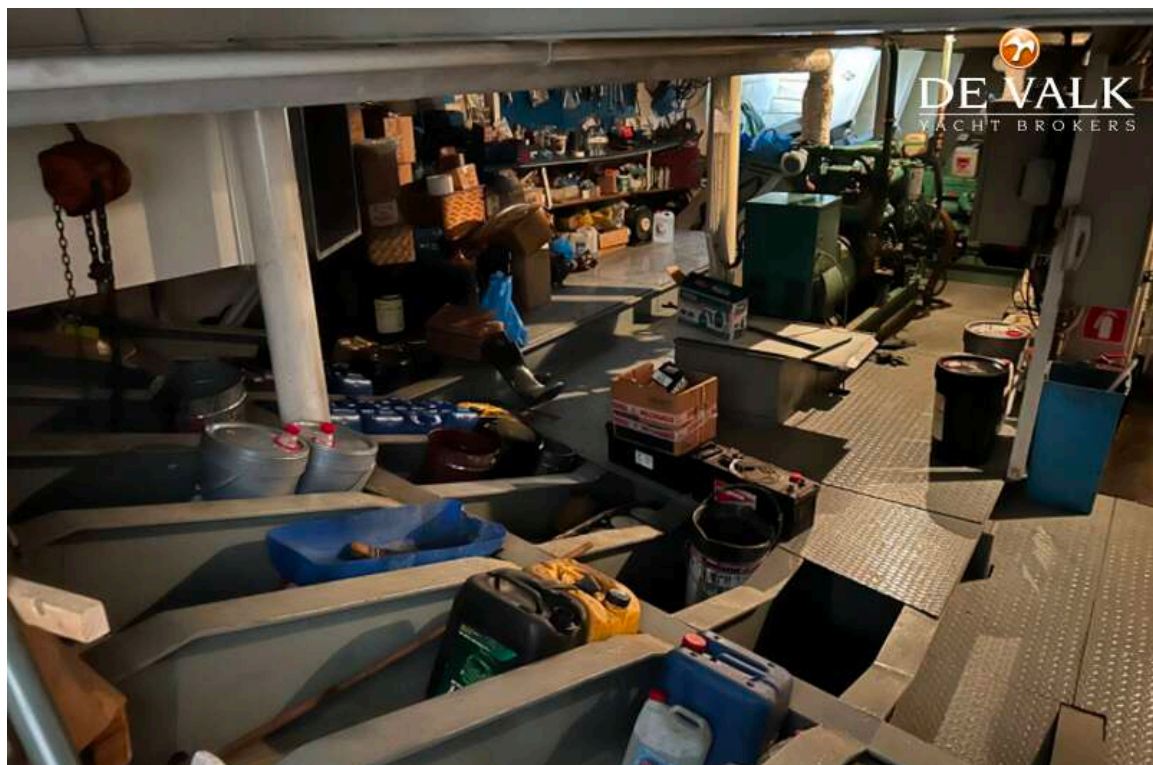
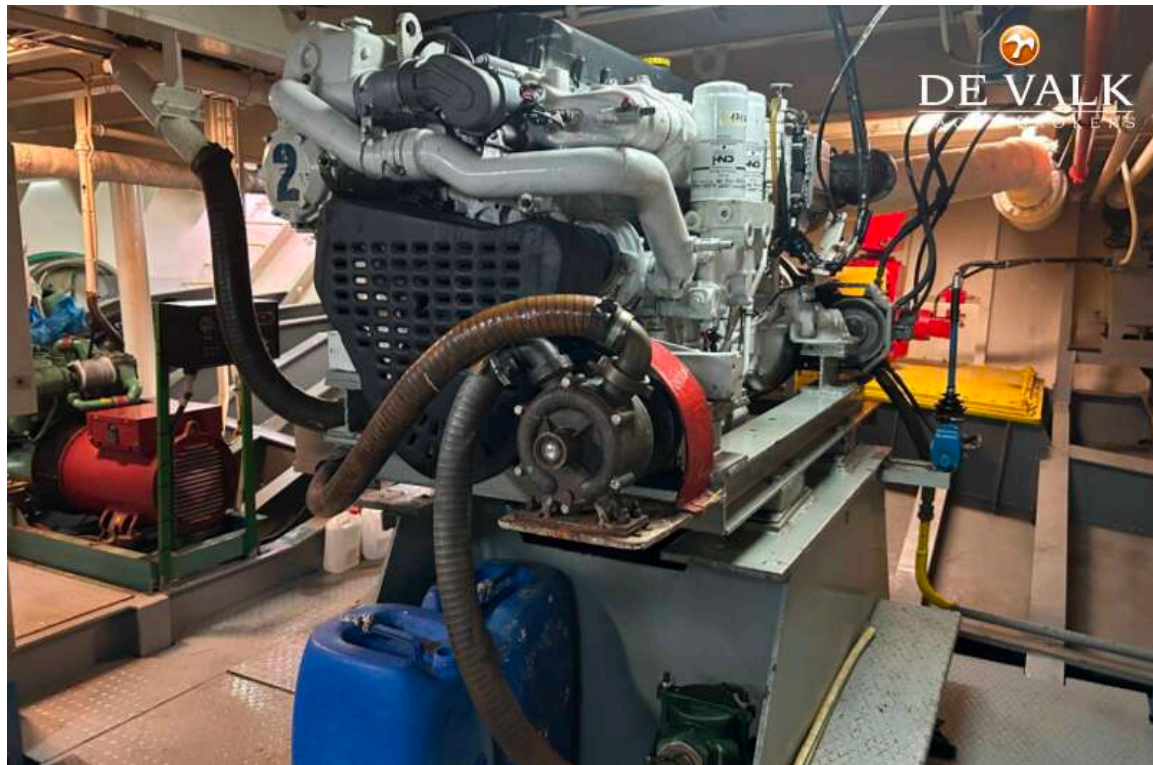


# RO/PAX DOUBLE ENDED FERRY 72 M





# RO/PAX DOUBLE ENDED FERRY 72 M





# RO/PAX DOUBLE ENDED FERRY 72 M

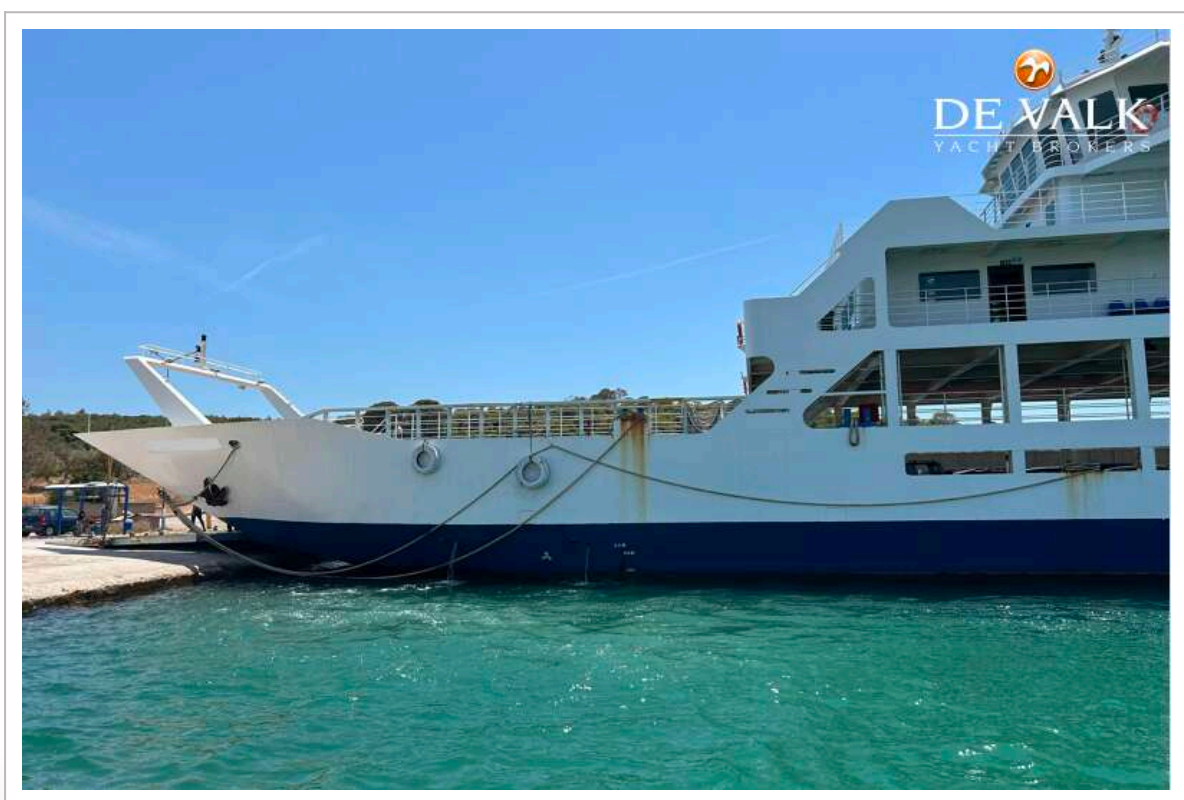


# RO/PAX DOUBLE ENDED FERRY 72 M





# RO/PAX DOUBLE ENDED FERRY 72 M



# RO/PAX DOUBLE ENDED FERRY 72 M

