



DE VALK
YACHT BROKERS



JOSHUA 40



DE VALK
YACHT BROKERS

JOSHUA 40

BROKER'S COMMENTS

Mary af Rövarhamn is a 40-feet META Joshua 40 steel ketch, a vessel that carries the soul of legendary adventures and conquers the hearts of those who sail her. Proportionally overdimensioned in every detail, she offers strength and safety in any weather. And inside, an interior that surprises with its timeless beauty, a warm and inviting haven of mahogany charm that feels like home, even in the farthest corners of the world.

Per Engdahl

SPECIFICATIONS

Dimensions	12.20 x 3.68 x 1.70 (m)	Builder	META Yachts
Built	1983	Cabins	2
Material	Steel	Berths	6
Engine(s)	1 x Vetus M4.55 diesel	Hp/Kw	52.00 (hp), 38.27 (kw)
Asking price	€ 99.000 (VAT Exempt)	Lying	contact sales office

CONTACT

Sales office	De Valk Sweden	Telephone	+46 72 358 50 74
Address	385 98 Bergkvara SE	E-mail	sweden@devalk.nl

DISCLAIMER

These particulars are given in good faith as supplied but cannot be guaranteed.



GENERAL

Model	JOSHUA 40
Type	sailing yacht
LOA (m)	12,20
LWL (m)	10,50
Beam (m)	3,68
Draft (m)	1,70
Air draft (m)	16,00
Year built	1983
Builder	META Yachts
Country	France
Designer	Jean Knocker
Displacement (t)	16
Ballast (tonnes)	4 (lead)
Hull material	steel
Hull colour	White
Hull thickness (mm)	4-13
Keel type	Long keel
Superstructure material	Steel
Superstructure (mm)	3
Deck material	Steel
Deck finish	Treadmaster smooth (2020)
Antifouling (year)	October 2024
Dorades	Bronze
Window frame	Goïot
Deckhatch	Goïot
Insulation	30mm
Fuel tank (litre)	160 + 180
Fuel tank 2 (litre)	220
Freshwater tank (litre)	150 + 250
Blackwater tank (litre)	50



JOSHUA 40

Wheel steering	yes
Outside helm position	yes
Tiller	yes
More info on paintwork	New antifouling october 2024
Extra info	Under water window 200mm diameter, acrylic glass 30mm thick

ACCOMMODATION

Cabins	2
Berths	6
Interior	Mahogany
Layout	Center cockpit and aft cabin
Saloon	U-shaped sofa, fine mahogany interior
Headroom saloon (m)	1.90
Heating	Hcalory Diesel water heater 5kWh (2023)
Heating 2	Gastherm electric water heater 3 kW
Navigation center	yes
Chart table	yes
Aft Cabin	yes
Galley	yes
Sink	2
Cooker	Force 10 gas 2 burner
Oven	Force 10 gas with grill
Gas alarm	yes
Fridge	Isotherm 3201 ASU
Manual and/or foot pump	yes
Toilet	Jabsco Comfort (2024)
Wardrobe	yes

MACHINERY

No of engines	1
Make	Vetus



JOSHUA 40

Type	M4.55
HP	52
kW	38.27
Fuel	diesel
Year installed	2013
Engine hours	3200
Drive	shaft
Shaft seal	yes
Propeller type	Fixed
Propeller blades	3 blades
Manual bilge pump	2 Whale Gusher 25
Electric bilge pump	Rule 3700
Bilge alarm	yes
Batteries	yes
Start battery	yes
Service battery	12V Sunbeam Smart Lithium Multi 648 Ah (2023)
Battery monitor	yes
Battery charger/inverter	Invertek Super Combi 70A/1500W (pure sinus)
Wind generator	D400 Eclectic Energy
Shorepower	yes
Insulation transformer	Digital Marin 3.5kVA 115/230 in - 230 out

NAVIGATION

Compass	Handheld: Sestrel Radiant
Electric compass	Simrad RC 42
Depth sounder	Nasa Clipper
VHF	Nexus NX2500
Autopilot	Simrad AC42 & Raymarine type 2
Wind vane steering install.	Aries (needs service)
Radar	Furuno
GPS	GPS1: Garmin 152, GPS2 (for autopilot and VHF): Matsutec



Navtex	Nexus NX2600
Personal computer	Fit-PC2 with 19 inch screen for navigation
AIS transceiver	True Heading CTRX
Navigation lights	Running lights DHR (2024) + steam light with led + led tricolor.

EQUIPMENT

Sun awning	yes
Boarding ladder	Integrated in hull on each side of the aft
Anchor	CQR 27kg
Anchor chain	12mm. 60+30m
Anchor 2	Delta 25kg and Danforth 20kg (both metallized 2021)
Windlass	Goïot manual
Dinghy	yes
Pushpit	yes
Pulpit	yes
Life raft	VIKING RescYou Pro
Life raft (pers)	6
Last life raft survey	2019
Lifebuoy	yes
Safety lines on deck	yes
Radar reflector	yes
Fenders	yes
Mooring lines	yes
Satellite	Iridium 9555A
Clock - barometer	Pilot

RIGGING

Rigging	Ketch
Standing rigging	Stainless wire 6-10mm
Material mast	Aluminum
Spreaders	yes

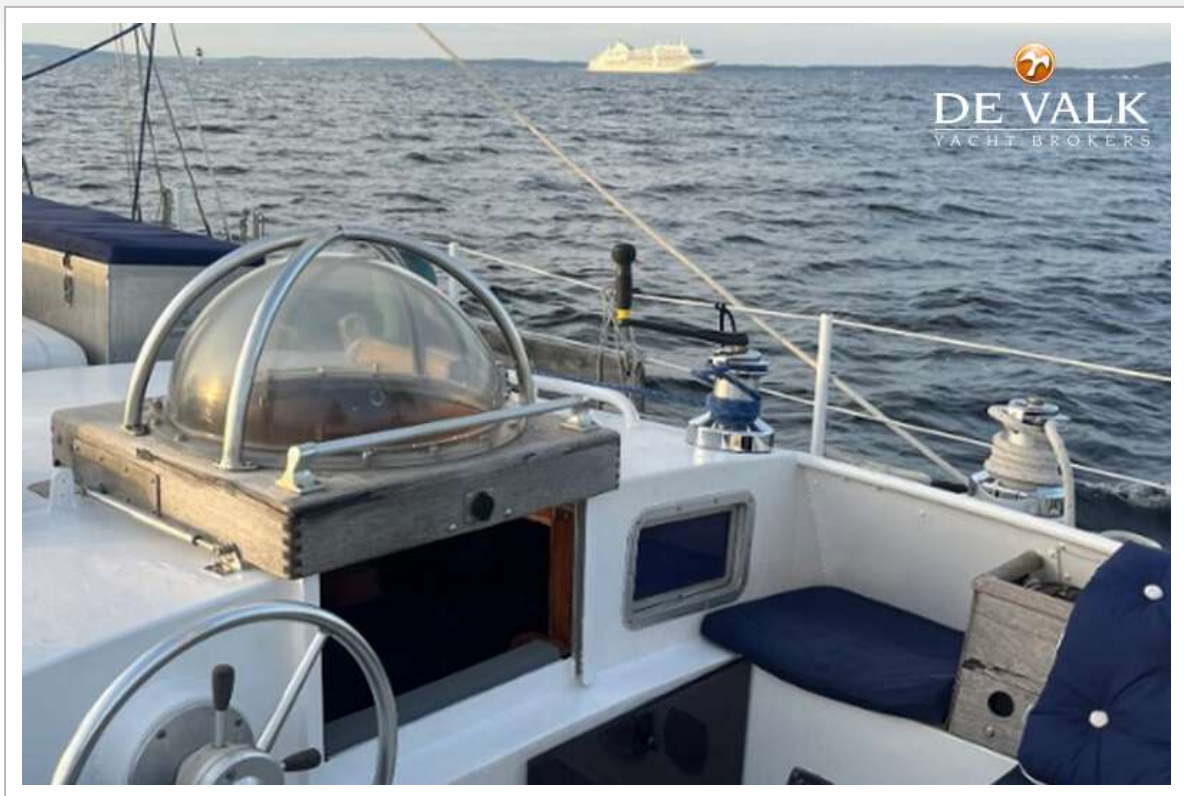


Mainsail	Doyle Offshore (2014)
Mainsail cover	Lazybag
Cutterstay	yes
Mizzen	Doyle Offshore (2014)
Mizzen sailcover	Lazybag
Mizzen staysail	Victor Tonnerre (original)
Jib	Victor Tonnerre (original)
Genoa	Hamel Sails (2013) with uv-cover.
Genoa furler	Furlex S300
Spinnaker	Victor Tonnerre (original)
Stormjib	yes
Boomvang	yes
Primary sheet winch	2 Hutton-Arco 52ST (2018)
Secondary sheet winch	2 Hutton-Arco 52ST (2018)
Halyard winches	Lewmar
Spi-pole	5,5m Nirvana masts
Extra info	2 Wichard Gyb'Easy boom brakes

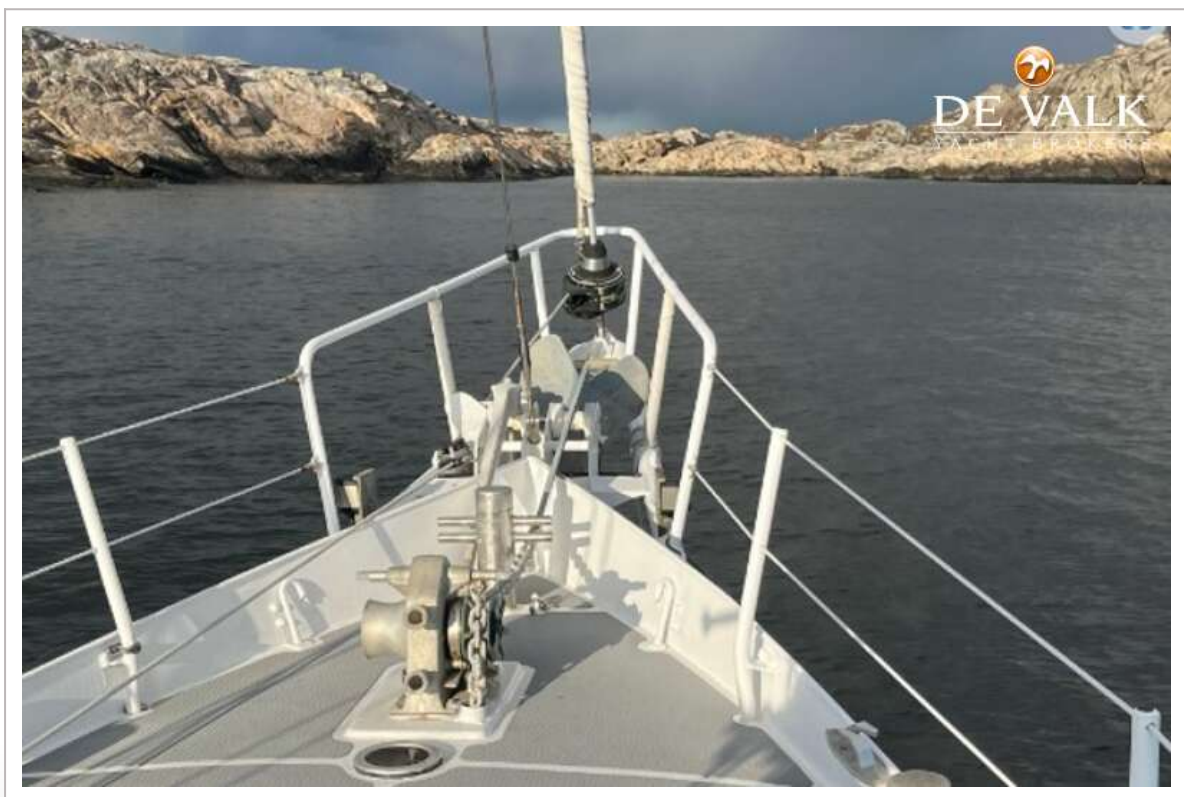






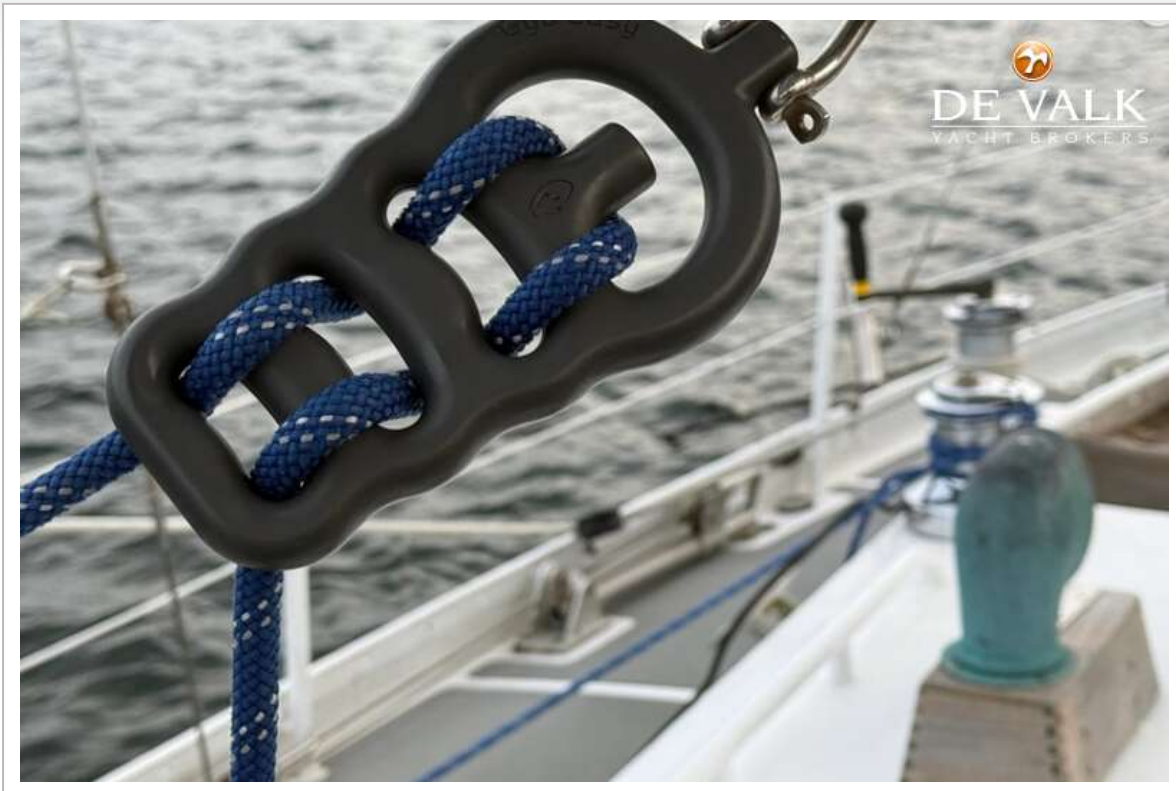


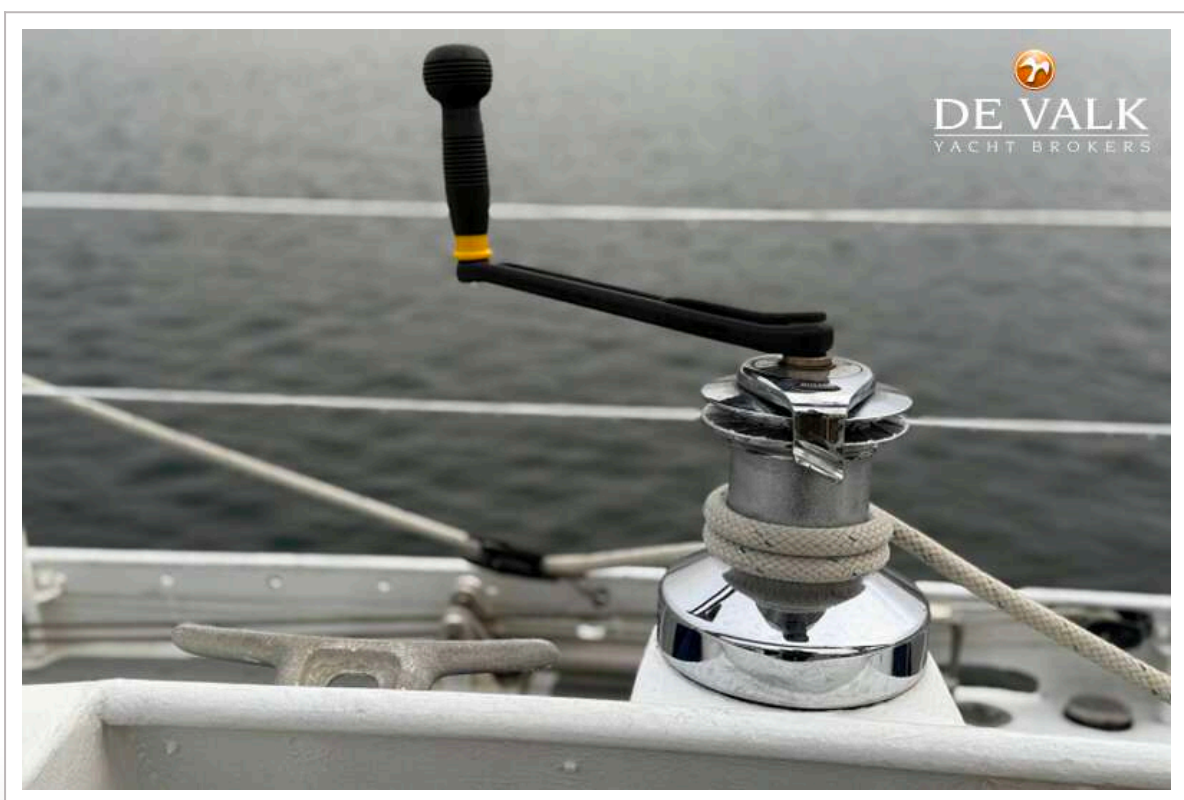
JOSHUA 40



JOSHUA 40



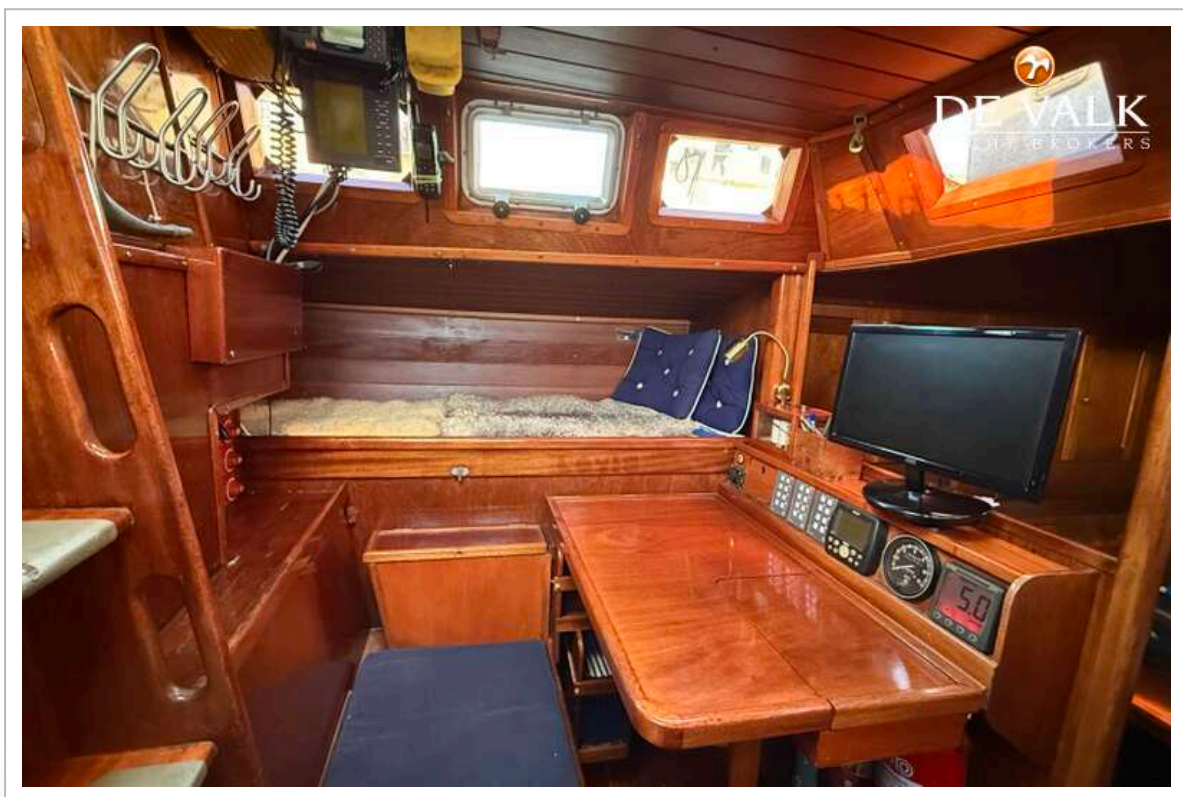




JOSHUA 40



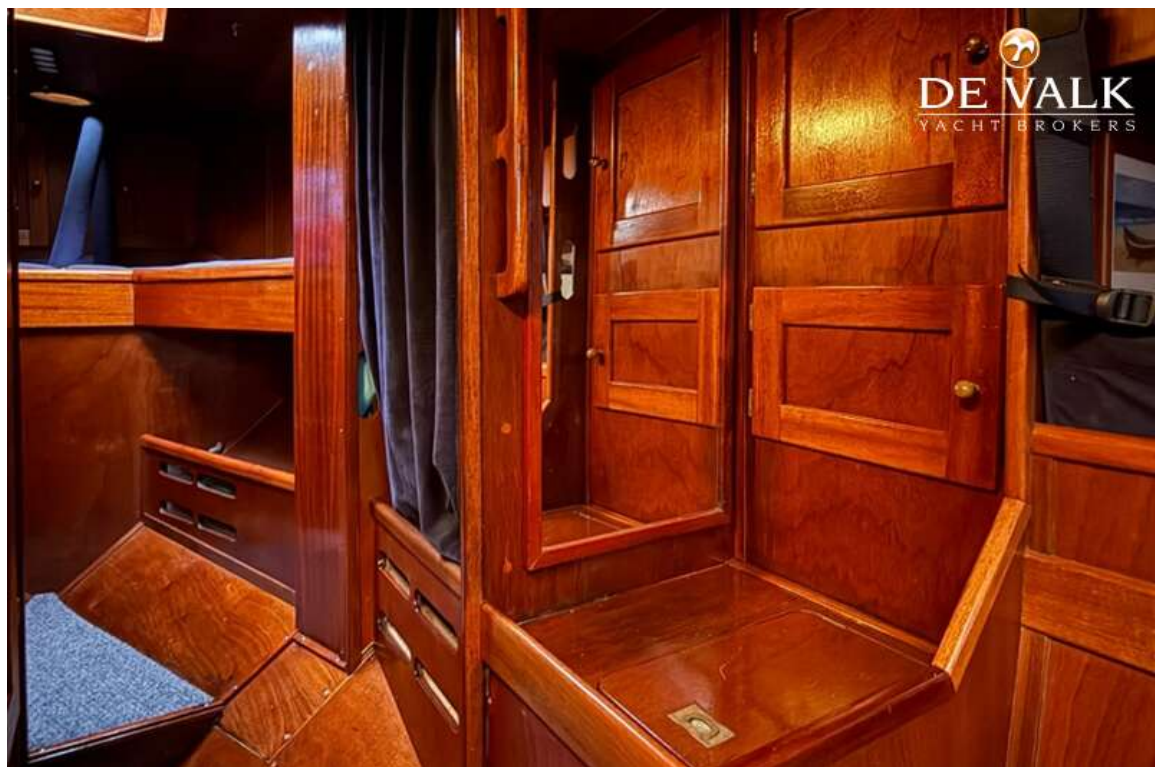
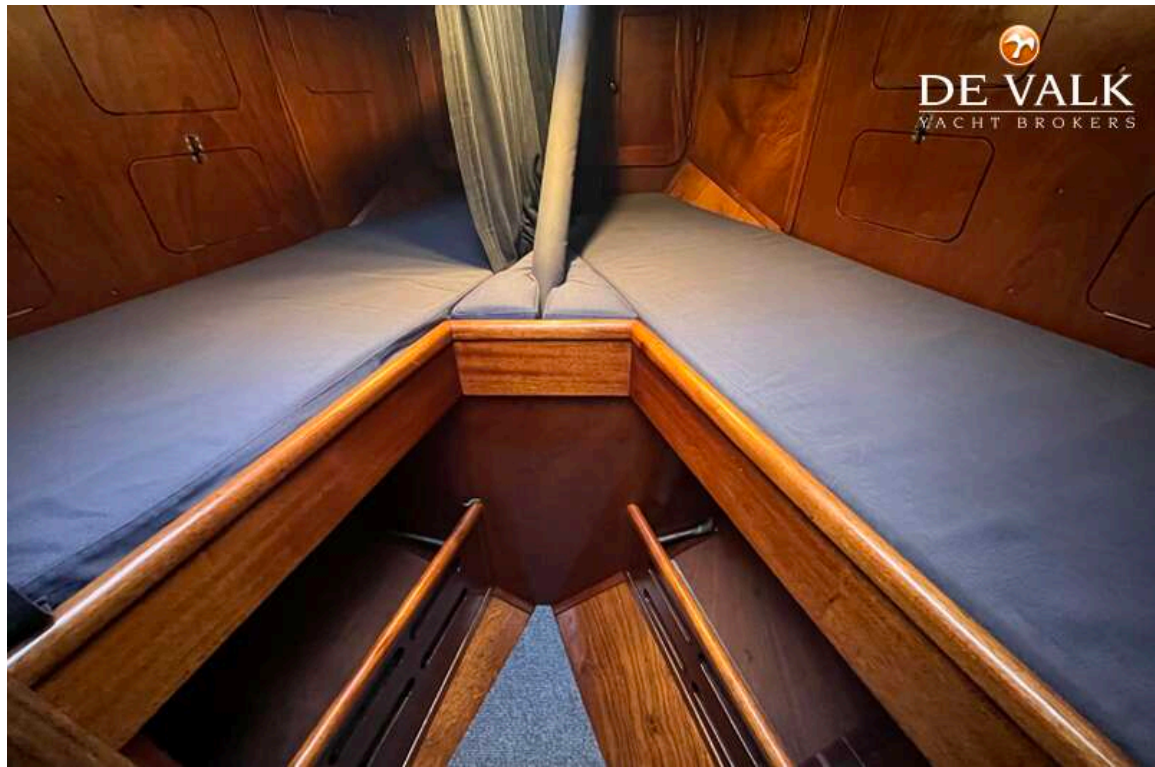




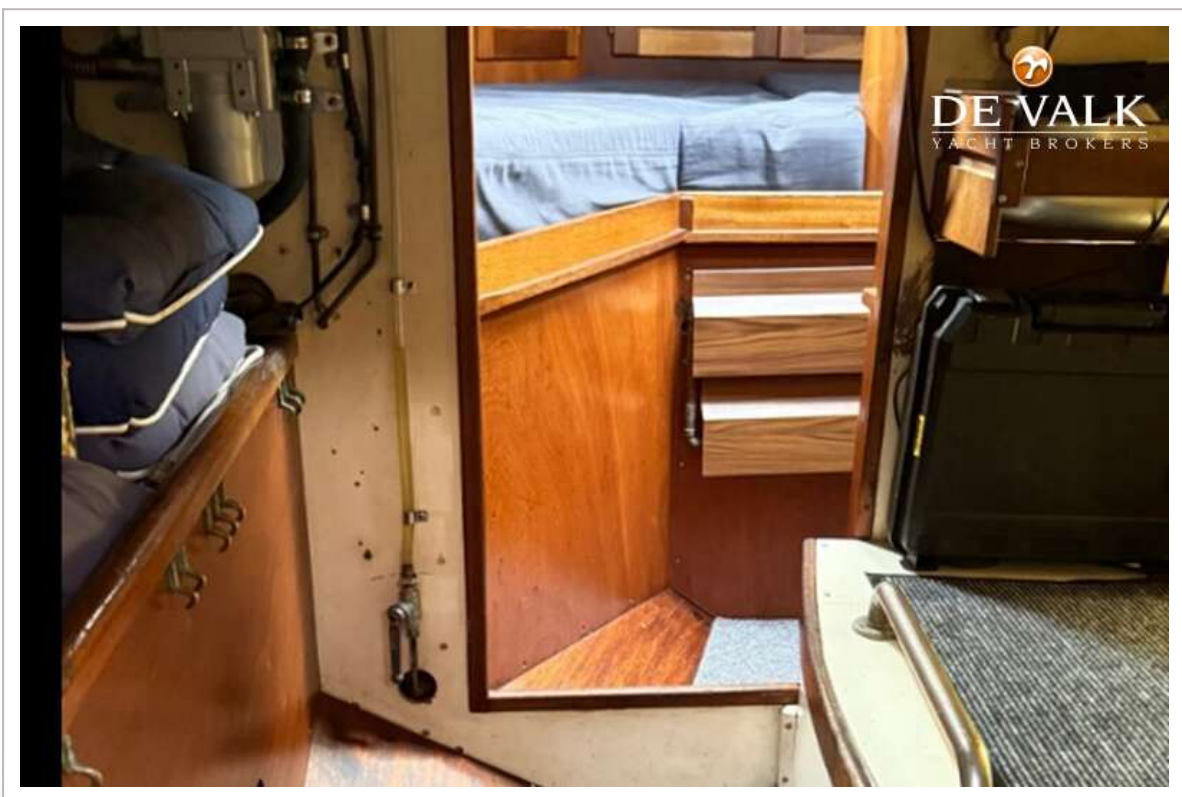
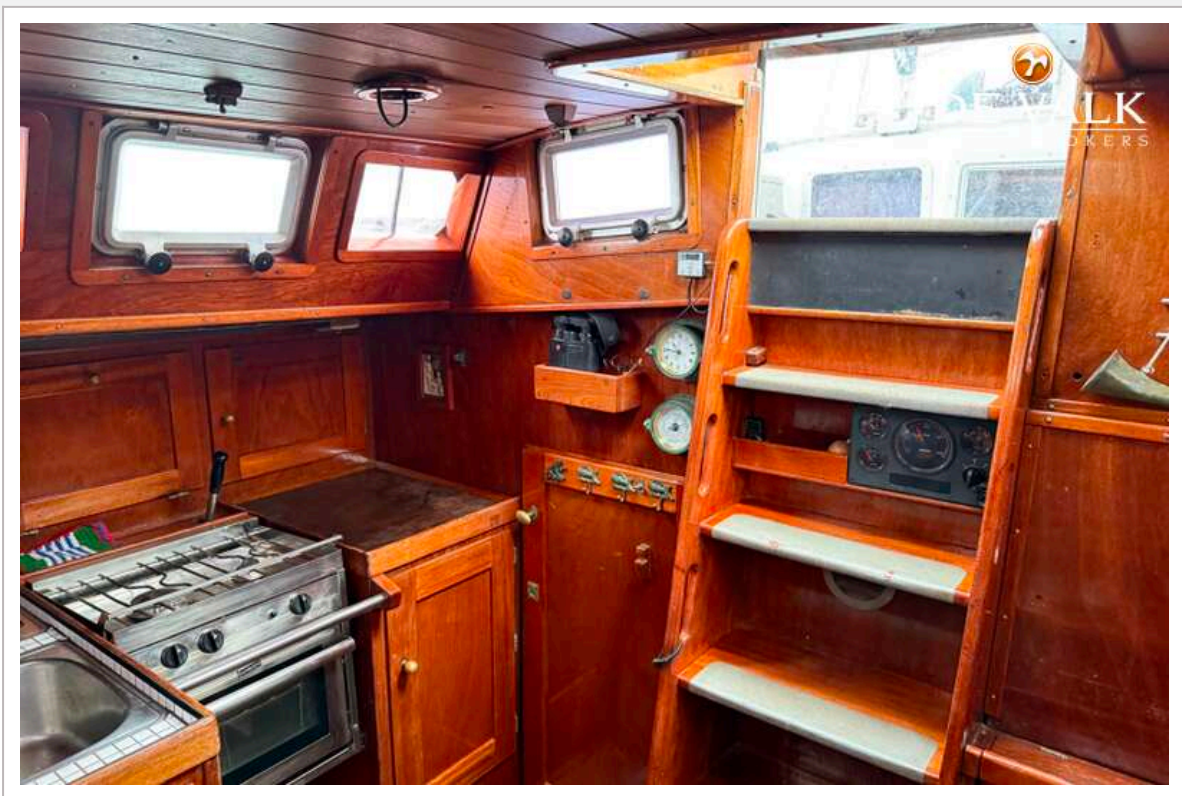
JOSHUA 40

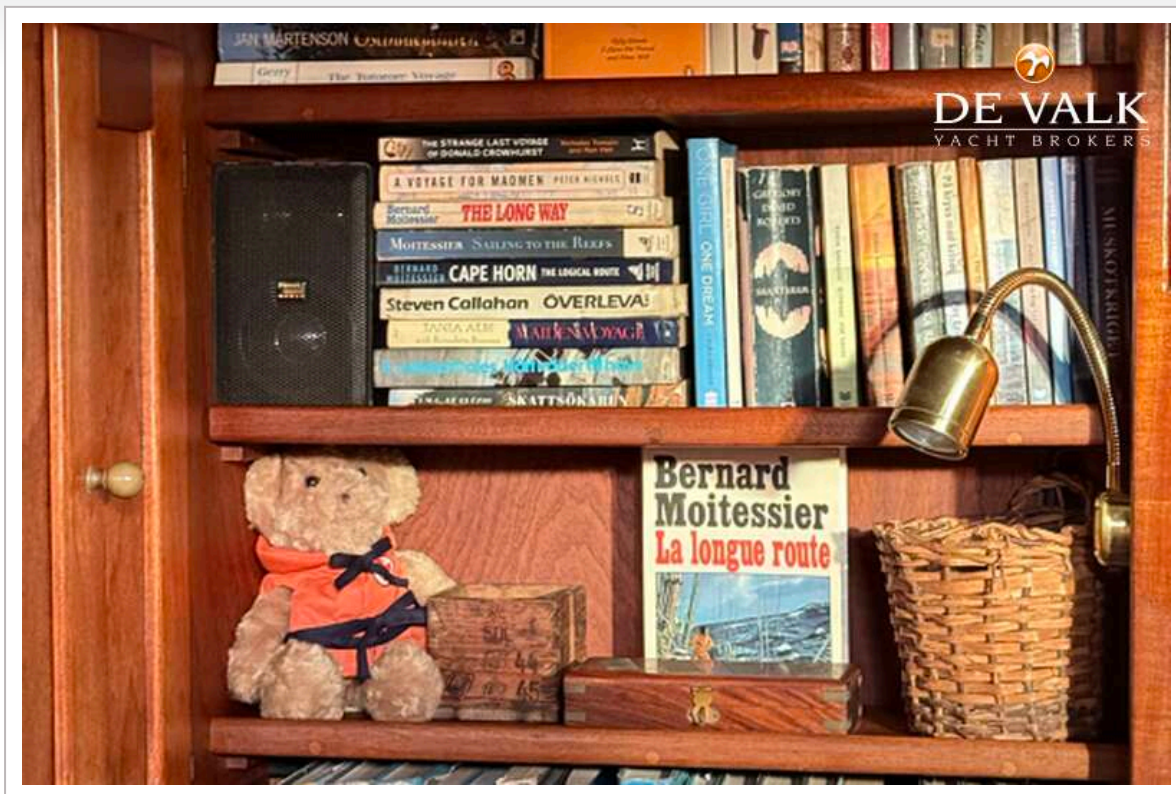


JOSHUA 40



JOSHUA 40







JOSHUA 40



JOSHUA 40

