



GUARDIAN 50

GUARDIAN 50

BROKER'S COMMENTS

The GUARDIAN 50 was built in 2004, designed by Van Oossanen and styled by Rene Van der Velden. The yacht belongs to the first owner and she has always been in a boathouse. The yacht is 14.95 meters long, has a composite hull and has five berths. The Guardian is seaworthily built and has 3 watertight compartments with a collision bulkhead and CE-A certification. Equipment includes 2 Yanmar diesel engines of 500 hp each, an advanced navigation system by Raymarine, and various luxury features such as air conditioning, central heating, and a full galley with Miele appliances.

Mark Hesselmans

SPECIFICATIONS

Dimensions	14.95 x 4.90 x 1.00 (m)	Builder	Blue Print Marine B.V.
Built	2004	Cabins	3
Material	GRP	Berths	5
Engine(s)	2 x Yanmar 6CXM GTE2 diesel	Hp/Kw	2 x 500.00 (hp), 368.00 (kw)
Asking price	sold (VAT)	Lying	elsewhere / Not at sales office

CONTACT

Sales office	De Valk Loosdrecht B.V.	Telephone	+31 (0)35 582 90 30
Address	't Breukeleveense Meentje 6 1231LM Loosdrecht / Wijdmeren NL	E-mail	loosdrecht@devalk.nl

DISCLAIMER

These particulars are given in good faith as supplied but cannot be guaranteed.



GENERAL

Model	GUARDIAN 50
Type	motor yacht
LOA (m)	14,95
Beam (m)	4,90
Draft (m)	1,00
Air draft min (m)	3,40
Year built	2004
Launched	2005
Builder	Blue Print Marine B.V.
Country	The Netherlands
Designer	Rene van der Velden/Piet van Oossaanen
Displacement (t)	17,5
CE norm	A
Hull material	GRP
Hull colour	blue
Hull thickness (mm)	The hull is made of Aramide viber with composite
Hull shape	V-shaped hull Designer: Piet van Oossaanen
Rubbing strake	rubber
Deck material	GRP
Deck finish	teak
Superstructure deck finish	non-skid moulded in
Cockpit deck finish	teak
Window frame	aluminium
Window material	glass With screens
Deckhatch	3x
Flybridge	yes
Radar arch	collapsible Hydraulic and the air draft lowered with 1.2m when down
Fuel tank (litre)	1500 composite
Fuel tank 2 (litre)	1500 composite
Level indicator (fuel tank)	yes



Freshwater tank (litre)	stainless steel 1000 in total in 2 tanks
Level indicator (freshwater)	yes
Blackwater tank (litre)	polyethylene 500
Level indicator (blackwater)	With cleaning system
Greywater tank (litre)	polyethylene 500
Level indicator (greywater)	With cleaning system
Wheel steering	hydraulic With emergency control in chart table
Inside helm position	Follow-up steering on tiller
Flybridge helm position	Follow-up steering on tiller
More info on hull	Hull tanktest are done by Marin Wageningen en Southampton
Extra info	Captain seats from Recaro Maritime
Extra info	Rheinstrom Macerator pump for grey and blackwater system
Extra info	Lloyds conditions built

ACCOMMODATION

Cabins	3
Berths	5
Interior	mahogany
Layout	yes
Floor	carpet
Pilot house	yes
Saloon	yes
Heating	central heating DMV Maritime Booster climate controlled heated en chilled water
Air-conditioning	single cycle airco CLD Marine 2 compressor system
Chart table	yes
Opening door to cockpit	yes
Galley	yes
Countertop	corian
Sink	stainless steel
Cooker	induction Siemens



Extractor	Miele stainless steel
Microwave/oven combi	Miele M615 EG
Fridge	yes
Freezer	Inside Fridge
Hot water system	on central heating DMV Maritime Booster
Water pressure system	electrical Hydrofoor with 20l presuretank and 32l p/m 3 presure
Dishwasher	Miele
Owners cabin	double bed
Wardrobe	hanging/drawers/shelves Sufficient storage space
Bathroom	en suite
Toilet	en suite Tecma
Toilet system	vacuum
Wash basin	in the bathroom
Shower	en suite
Guest cabin 1	twin single
Wardrobe	shelves Sufficient storage space
Bathroom	en suite
Toilet	shared Tecma
Toilet system	vacuum
Wash basin	in the cabin
Shower	en suite
Guest cabin 2	single bed
Wardrobe	hanging and shelves
Bathroom	separate
Toilet	separate Tecma
Toilet system	vacuum
Washing machine/dryer combi	Miele Softtronic WT945S in the guest cabin

MACHINERY

No of engines	2
Make	Yanmar



Type	6CXM GTE2
HP	500
kW	368
Fuel	diesel
Maximum speed (kn)	27
Cruising speed (kn)	20
Range (nm)	600
Engine hours	672
Engine cooling system	freshwater heat exchanger
Drive	shaft
Engine controls	electrical Rexroth
Gearbox	hydraulic ZF 230-1A
Engine controls	electrical
Bowthruster	electric Maxpower
Thrust bearing	yes
Propeller type	fixed
Propeller blades	5
Propeller shaft material	stainless steel
Shaft lubrication	water Ceramic seal Amartech
Manual bilge pump	yes
Electric bilge pump	yes
Electrical installation	yes
Generator	wet exhaust Mase IS 9S 6KVA
Batteries	6x 200 Ah
Start battery	Optima Redtop
Bowthruster battery	yes
Battery monitor	Victron CCGX met B507BY VRM platform with online smartphone app
Battery charger	Victron charger for start batteries and generator batterie
Battery charger/inverter	Victron Quattro 24/8000/200
Shorepower	with cable
Extra info	Extra strong Dynamo 210A 24V on starboard engine



Extra info

Trimsystem with tank pumps

NAVIGATION

Compass on flybridge

Raymarine Hybridtouch

Electric compass

yes

Multi control display

Raymarine I70S and Raymarine Hybridtouch

Depth sounder

yes

Depth sounder/log

Raymarine DST800-0° Smart triducer. ThruHull, low profile

VHF

Raymarine Ray 60,70, 90 Raymic handset

Autopilot

Raymarine p70Rs

Rudder angle indicator

Raymarine p70Rs

Radar

Raymarine RA1048HD 4kW 122cm HD Color open scanner

GPS

Raystar 150 10Hz GPS/Glonass/ BeiDou antenne (STng) incl

Plotter/GPS

Raymarine Hybridtouch Navionics Plus

Navtex

ICS NAV6

Wifi antenna

5G

Camera

yes

Navigation lights

LED

Searchlight

Jabsco

Loudhailer

yes

Extra info

All Raymarine equipment is double on flybridge

Extra info

Air compressor that can be used on deck and in the engineroom

EQUIPMENT

Fixed windscreen

yes

Bimini

Seaworthy 2022 renewed

Cockpit cushions

yes

Cockpit table

yes

Boarding ladder

stainless steel Always possible to open from the water

Gangway

yes

Deck shower

Hot and cold water



Anchor	Stainless steel
Anchor chain	yes
Windlass	electrical
Deck wash	yes
Sea railing	stainless steel
Grab rail (superstructure)	stainless steel
Railing side opening gates	yes
Horn	yes
Fenders	yes
Mooring lines	yes
Radio	Bose 3.1 with Bluetooth
Fire extinguisher	And fire blankets
Auto extinguisher system	In engineroom
Extra info	Stainless steel flagpole



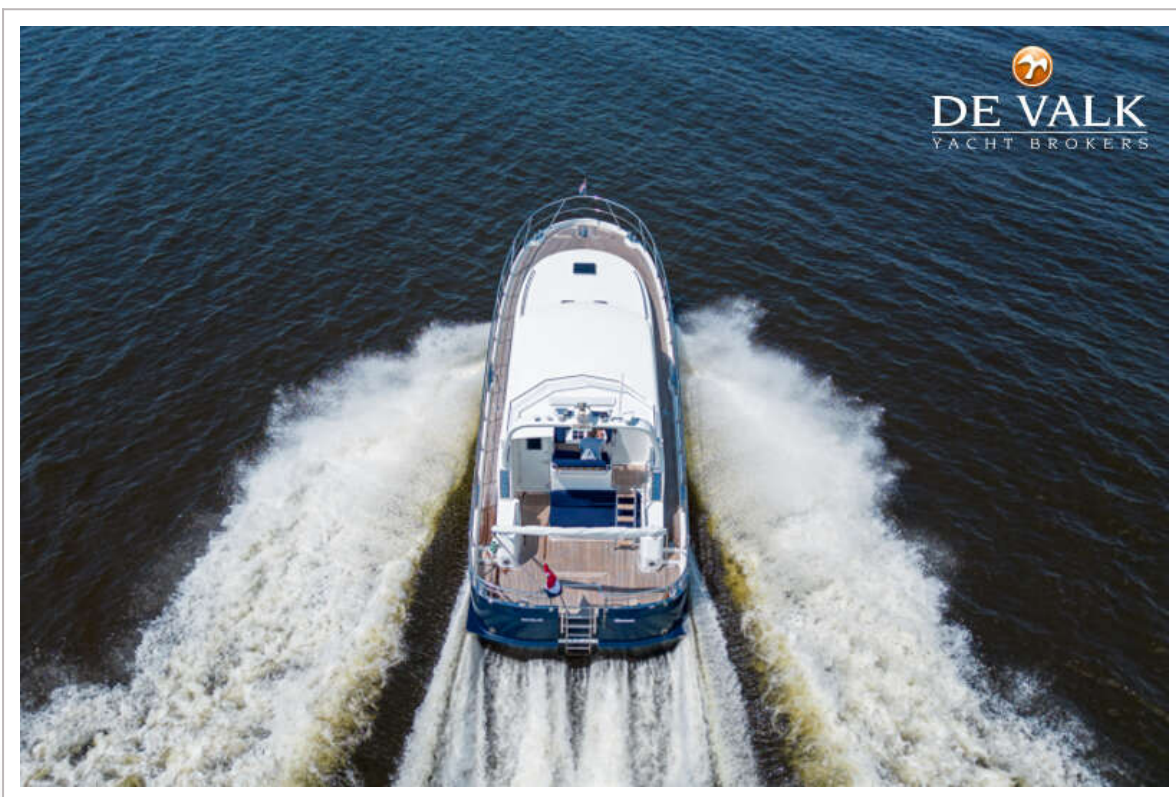
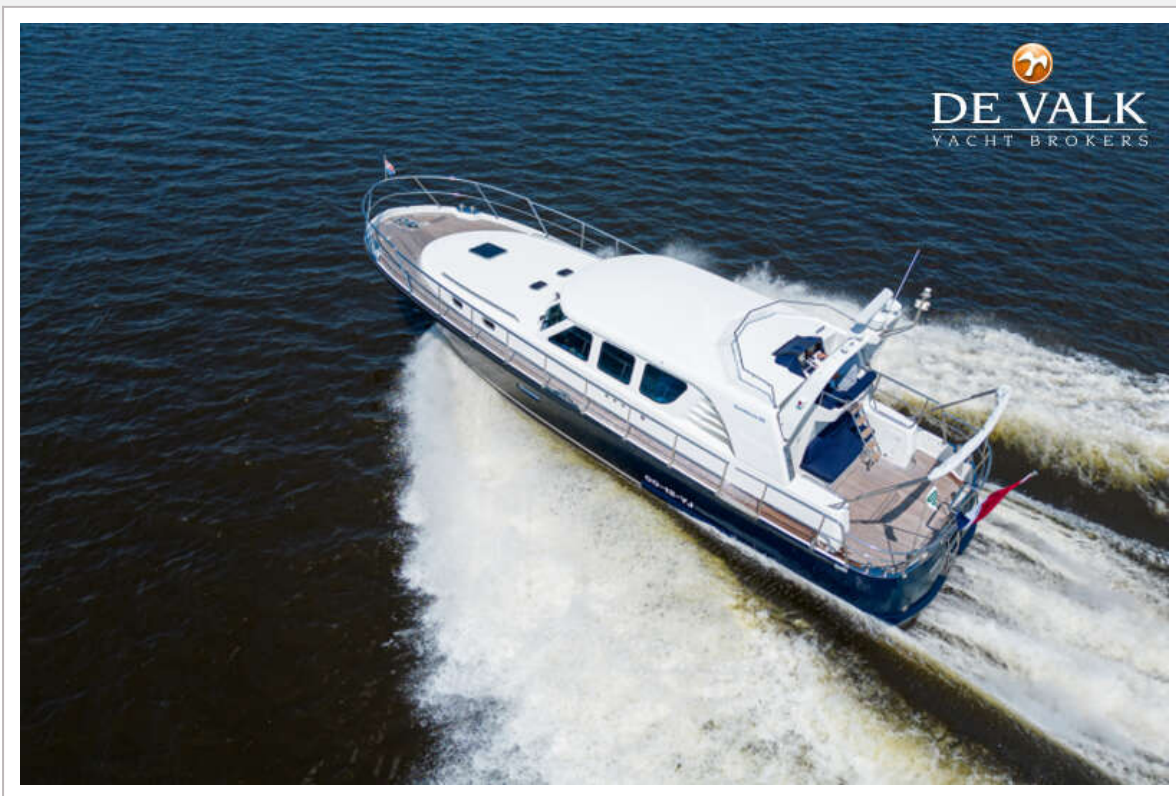
GUARDIAN 50



GUARDIAN 50



GUARDIAN 50



GUARDIAN 50



GUARDIAN 50



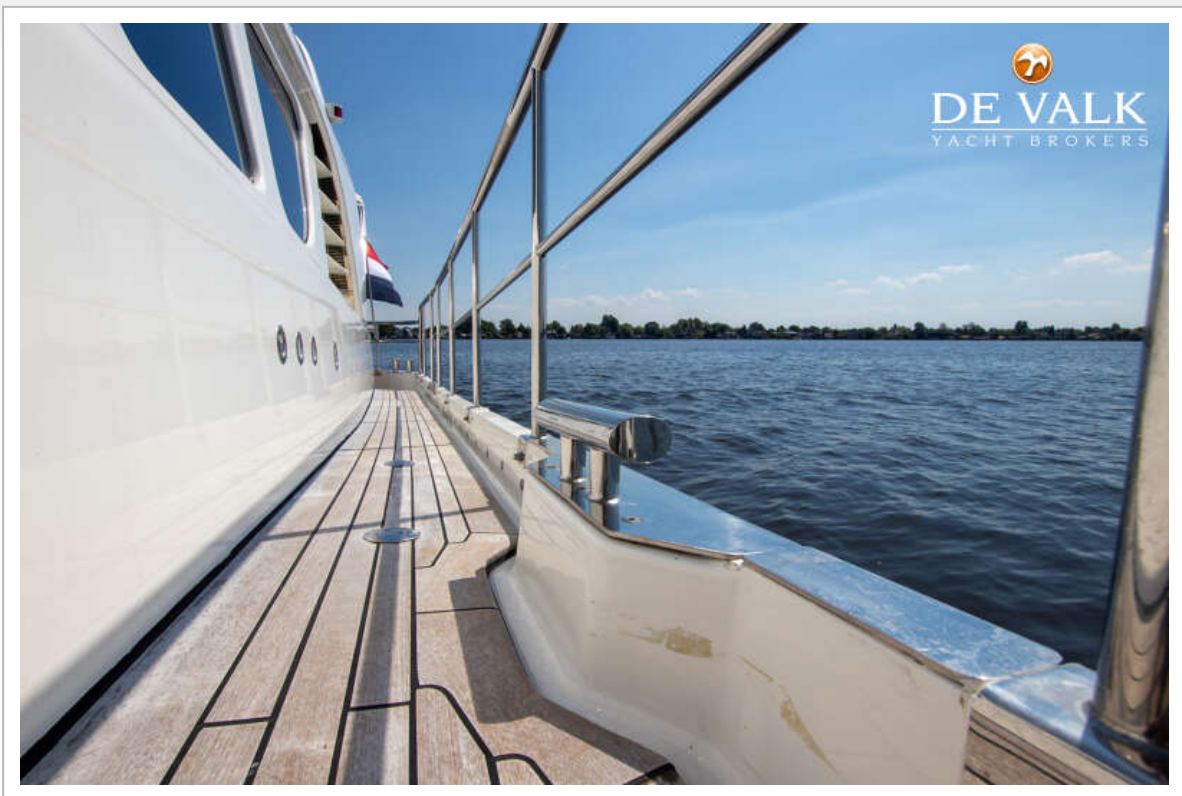
GUARDIAN 50



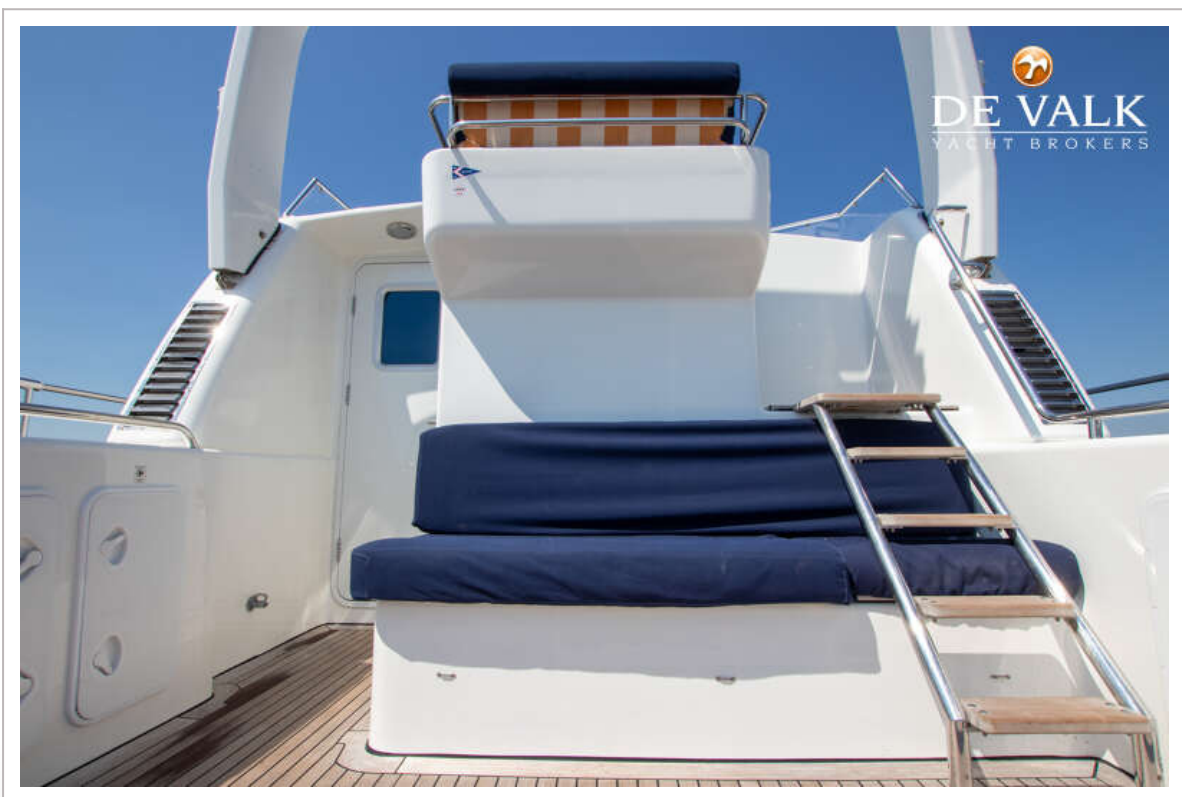
GUARDIAN 50



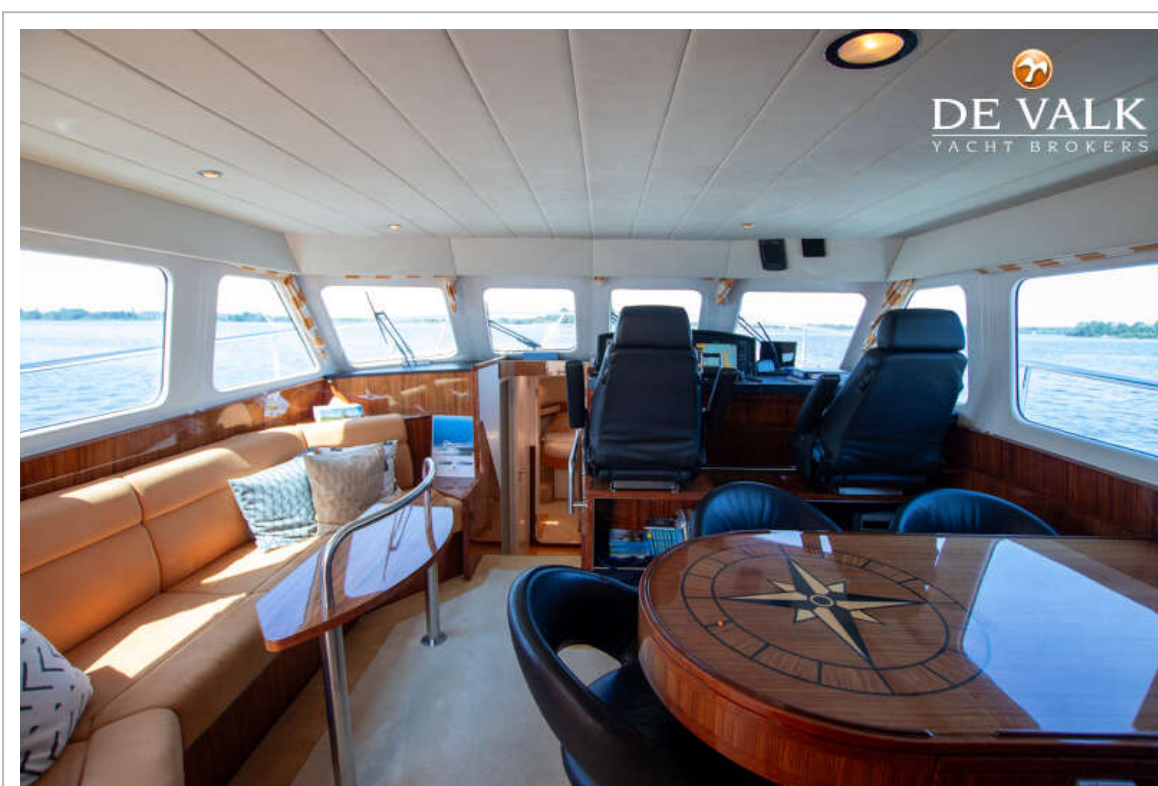
GUARDIAN 50



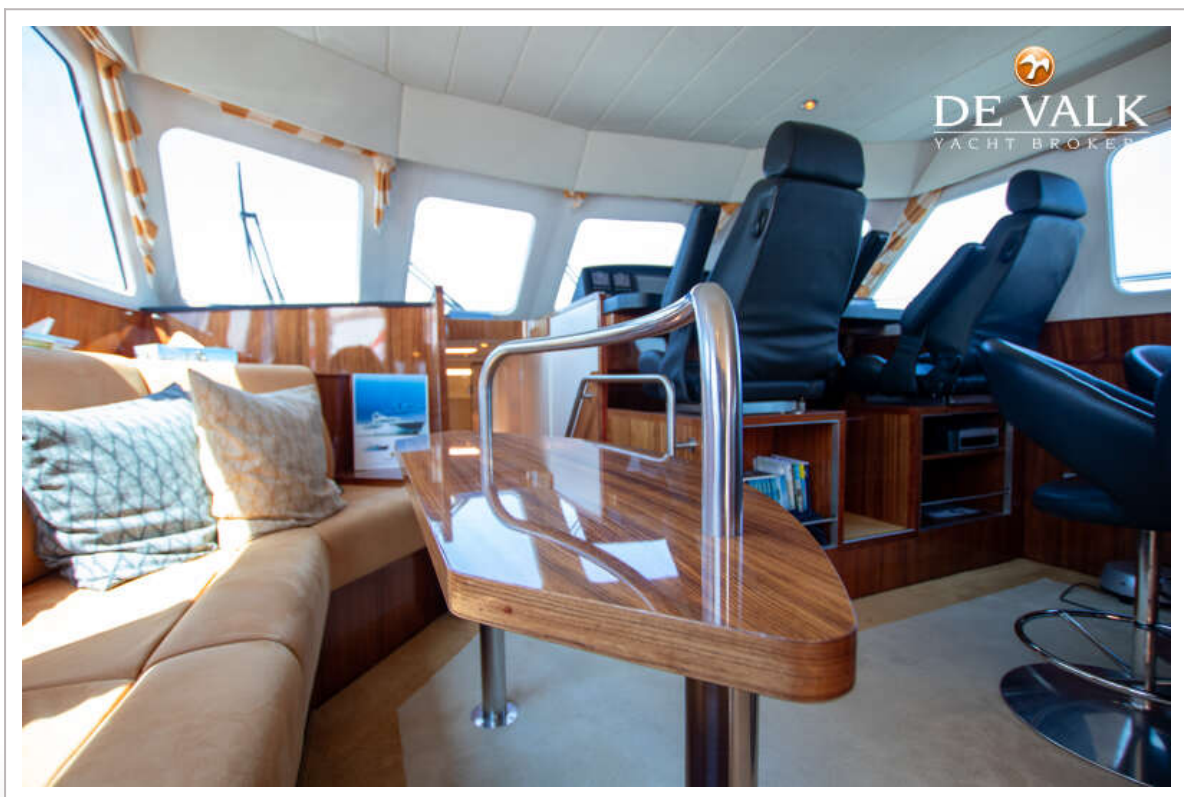
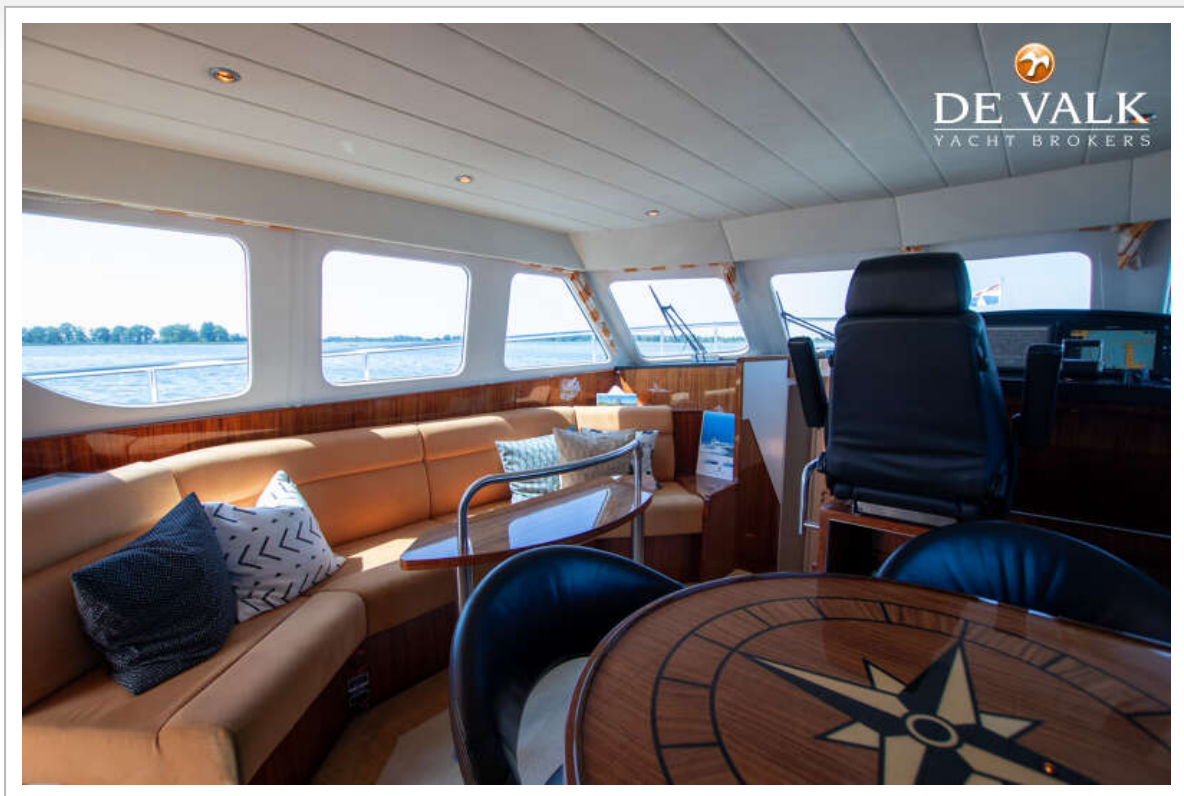
GUARDIAN 50



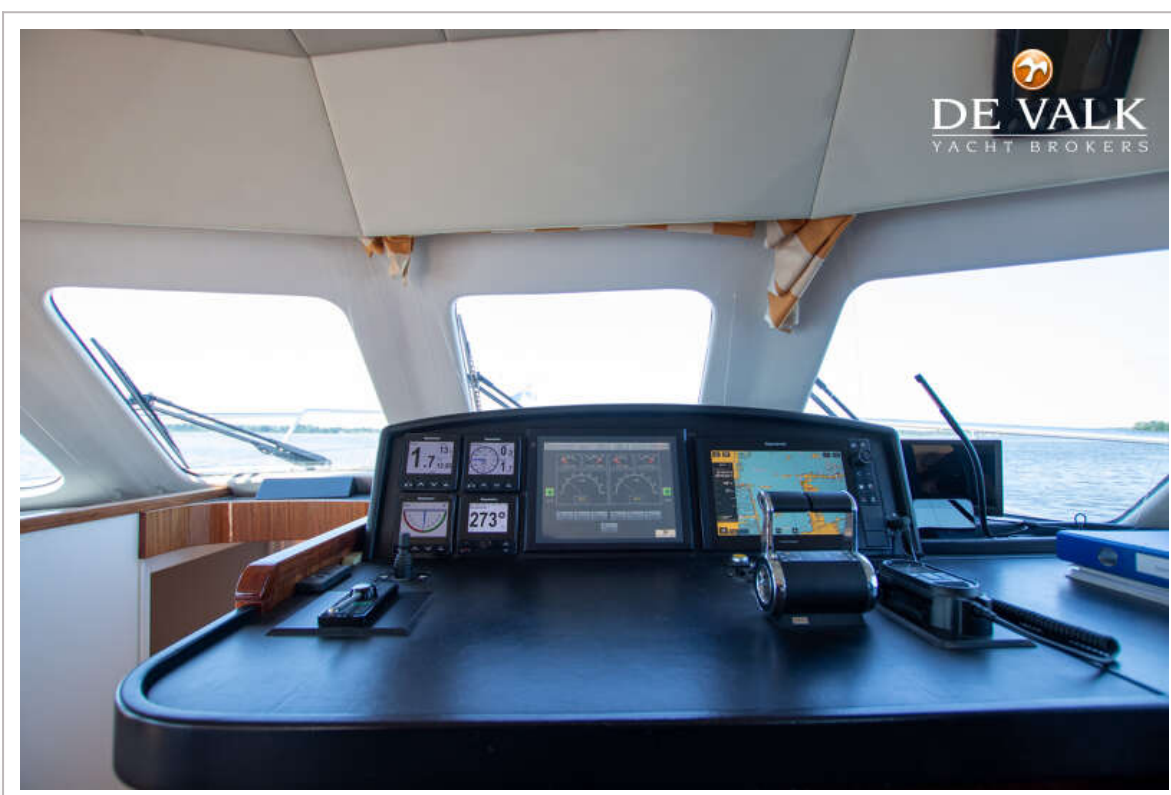
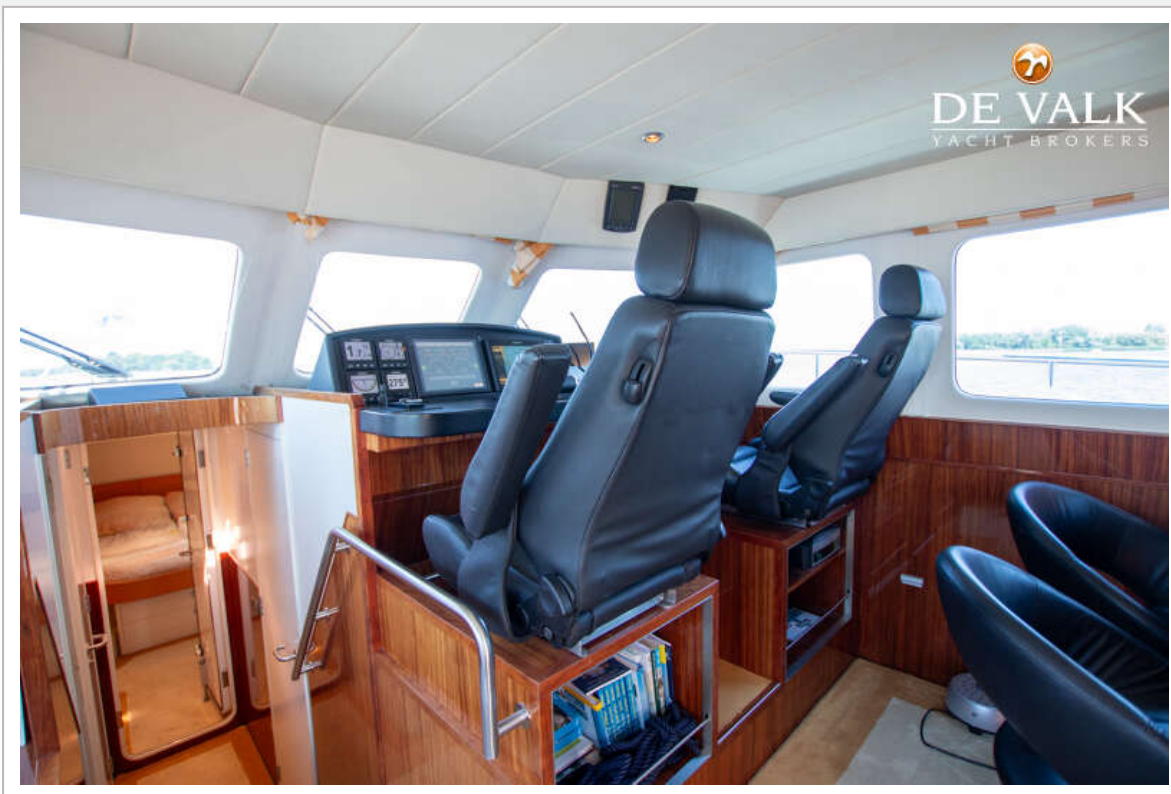
GUARDIAN 50



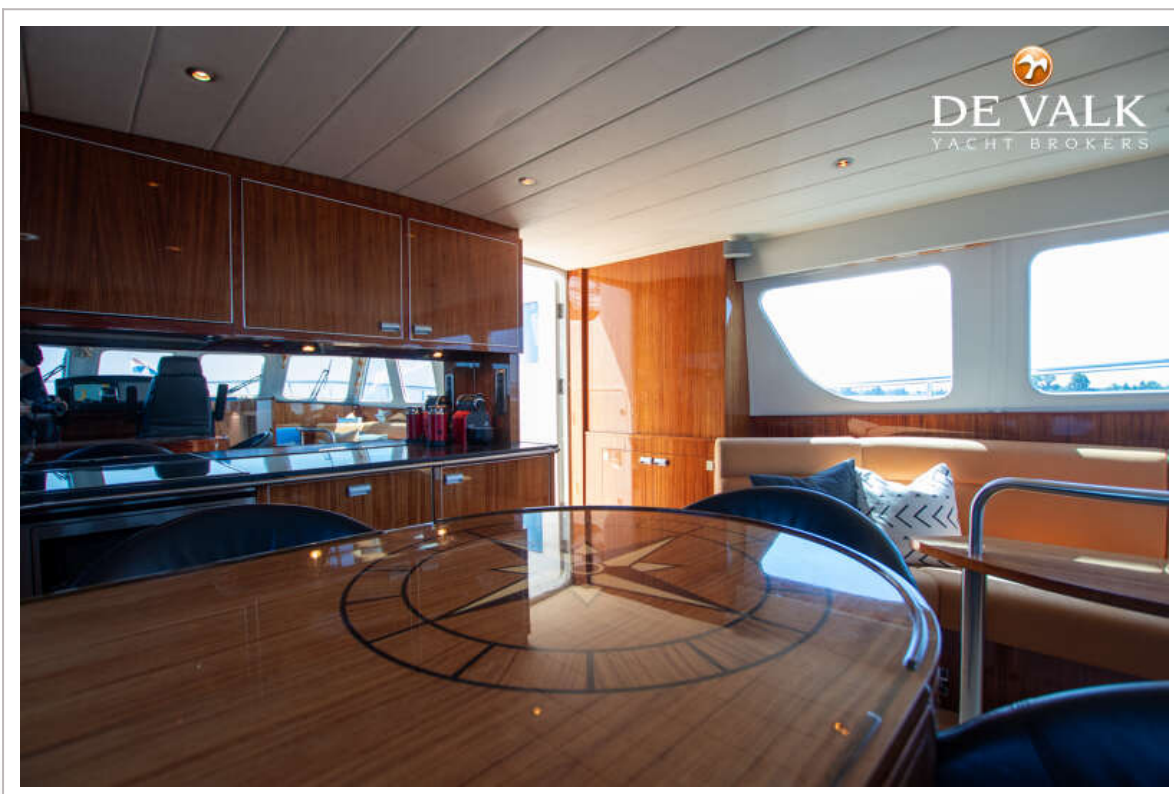
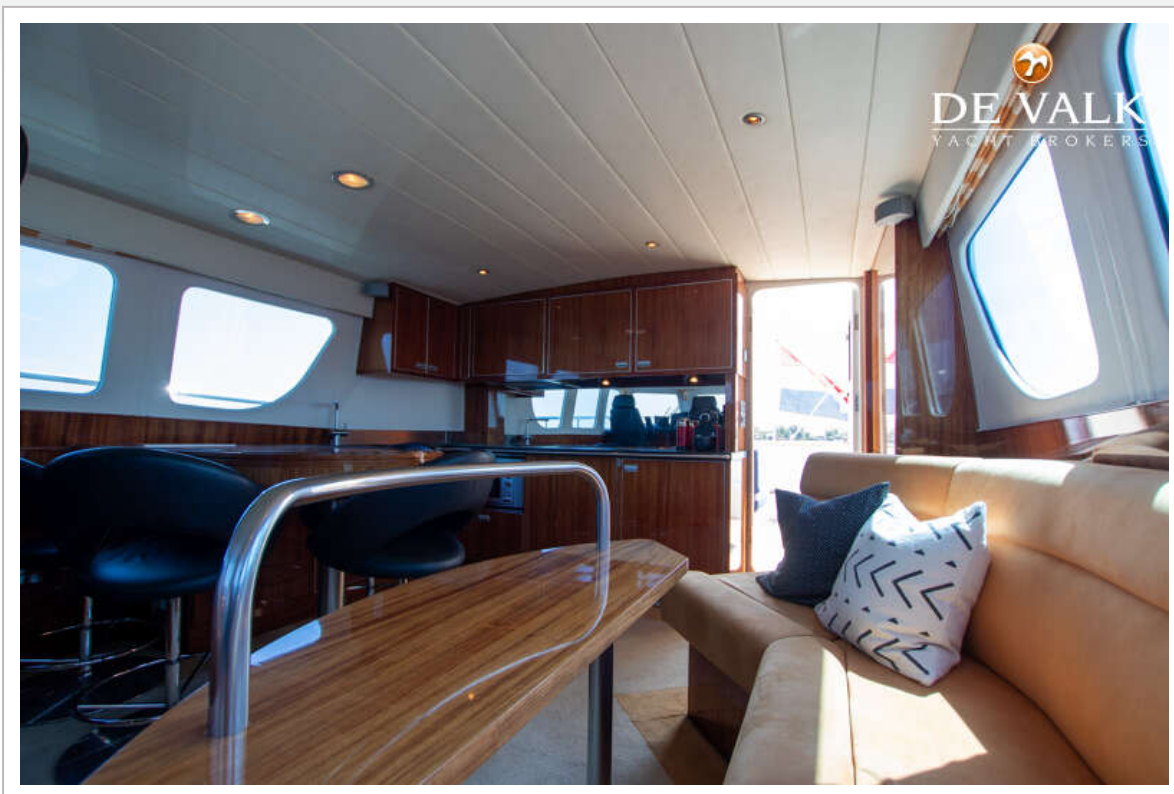
GUARDIAN 50



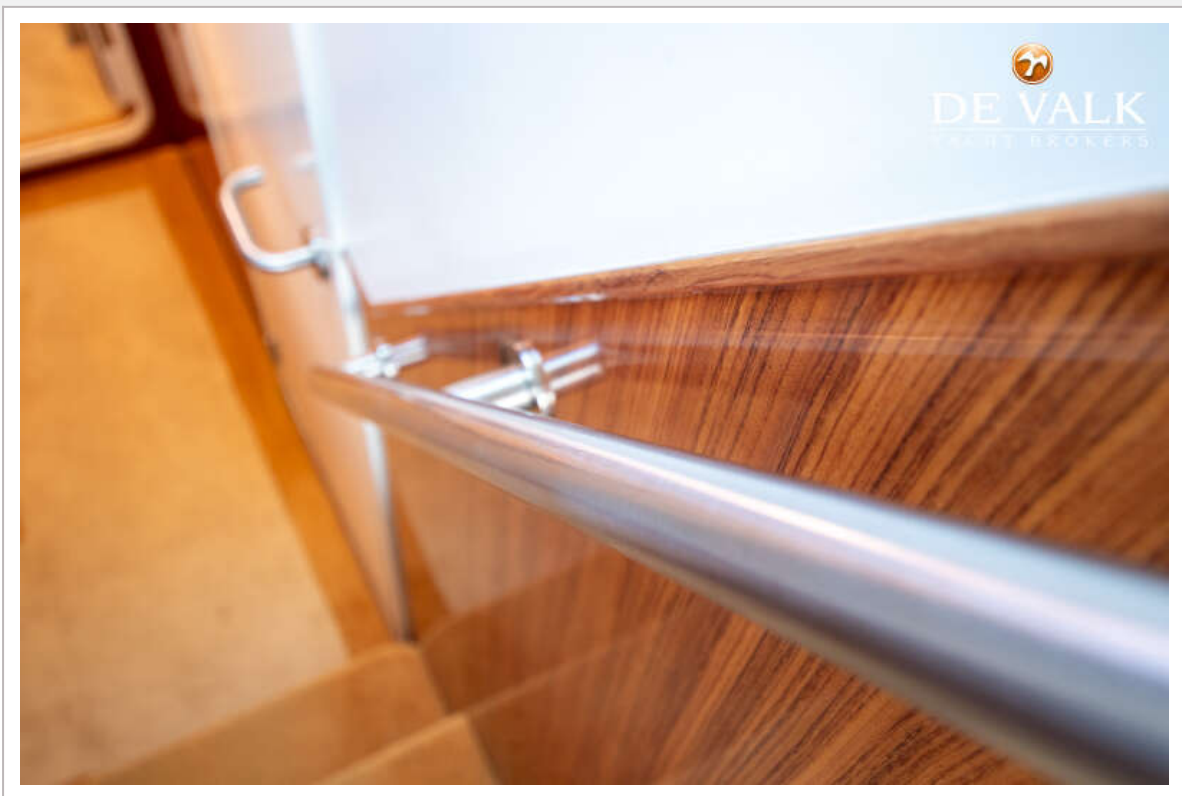
GUARDIAN 50

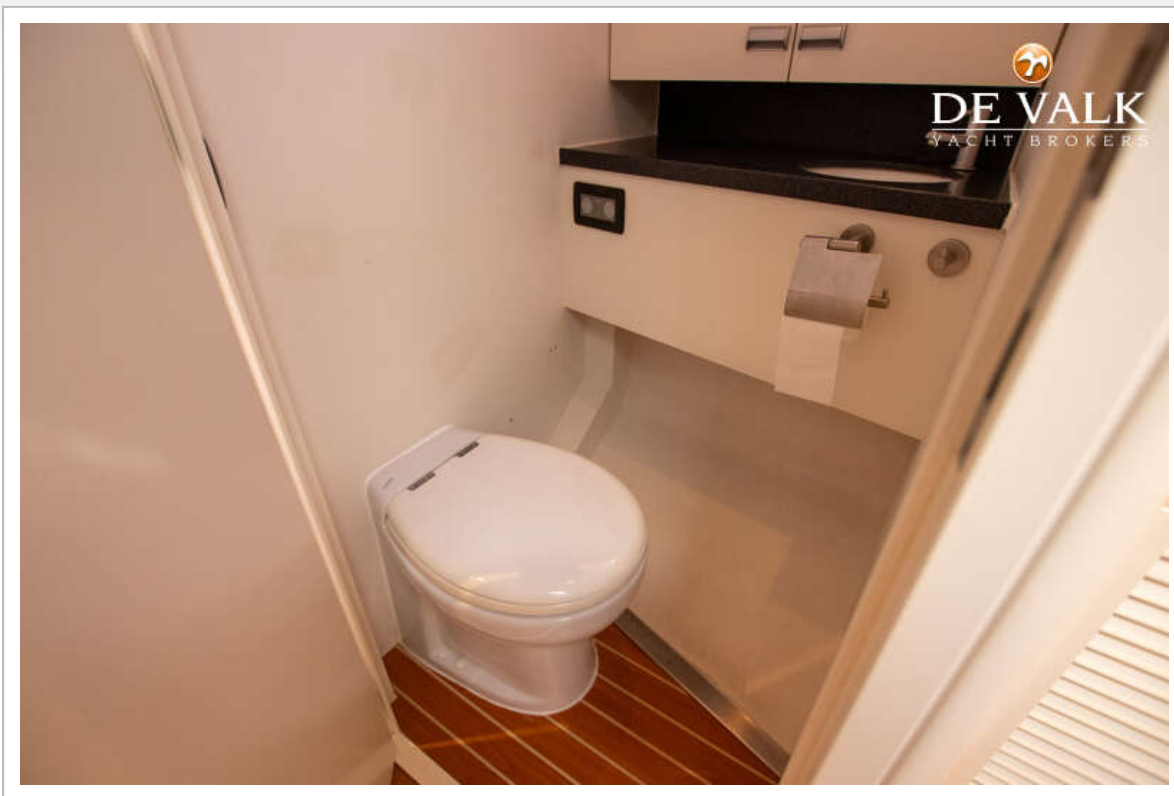


GUARDIAN 50

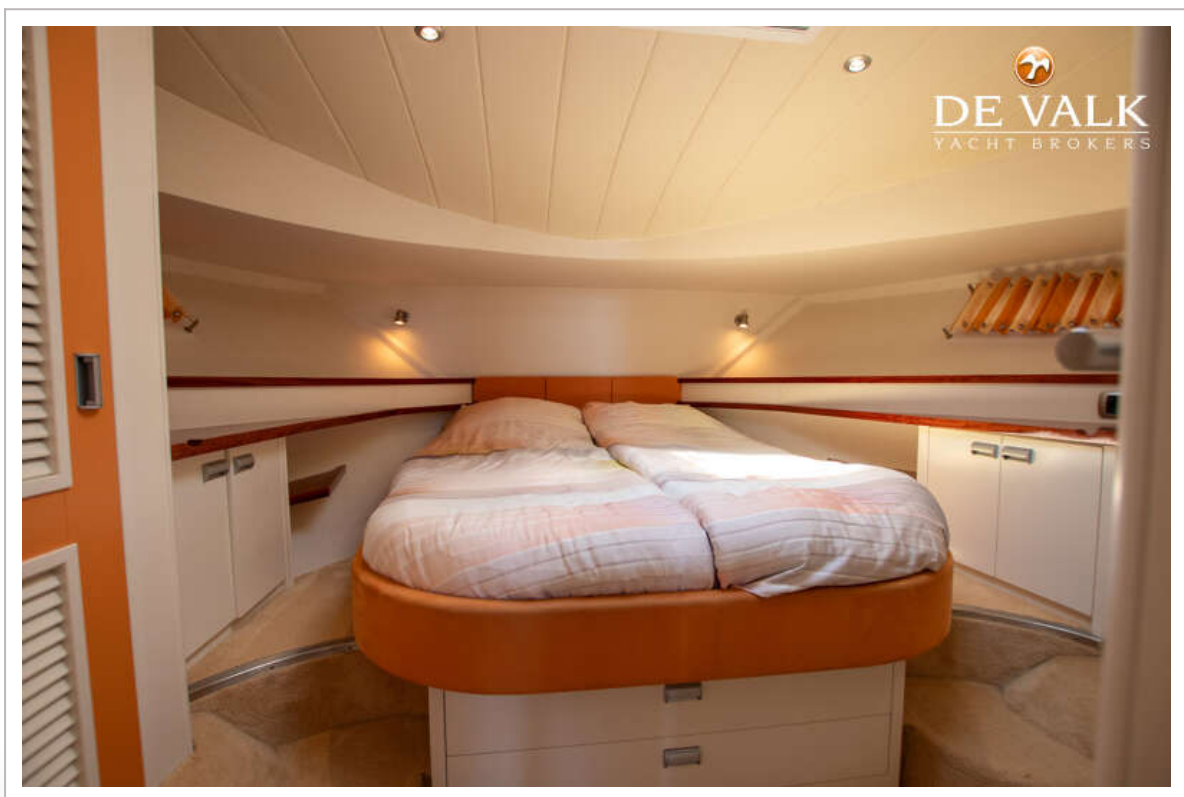
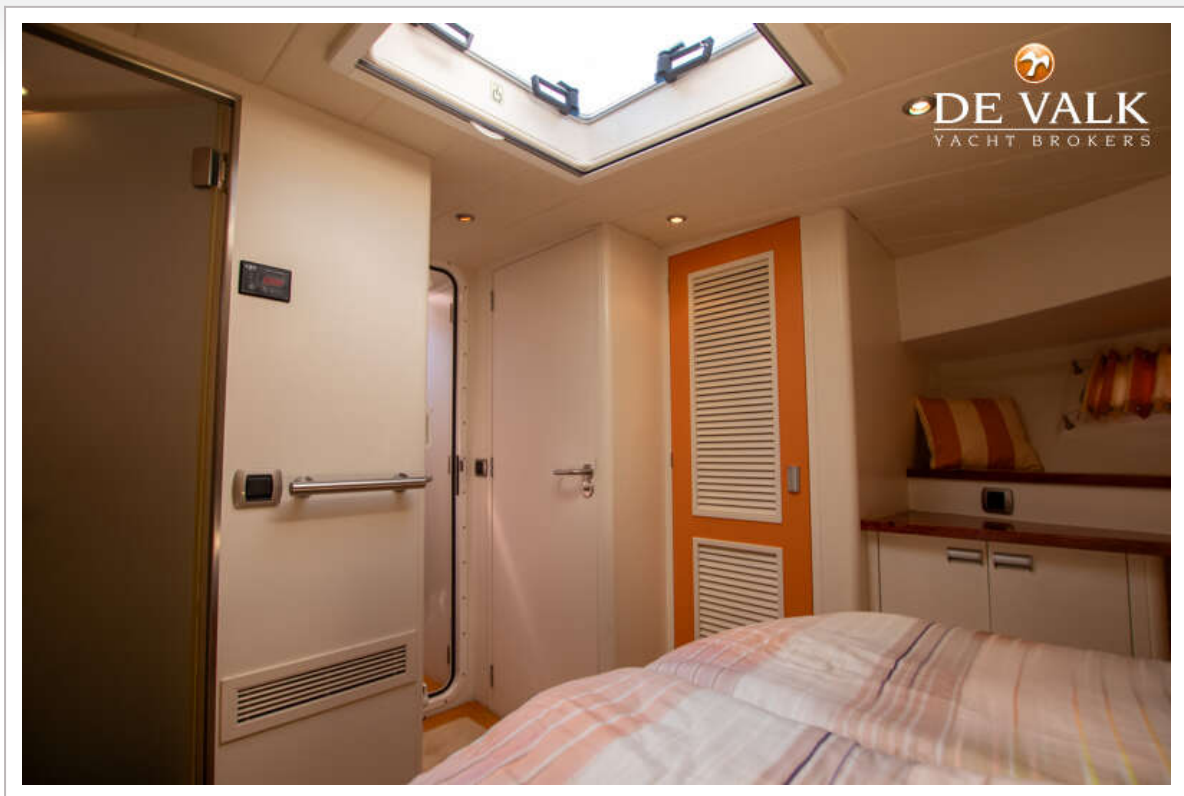


GUARDIAN 50

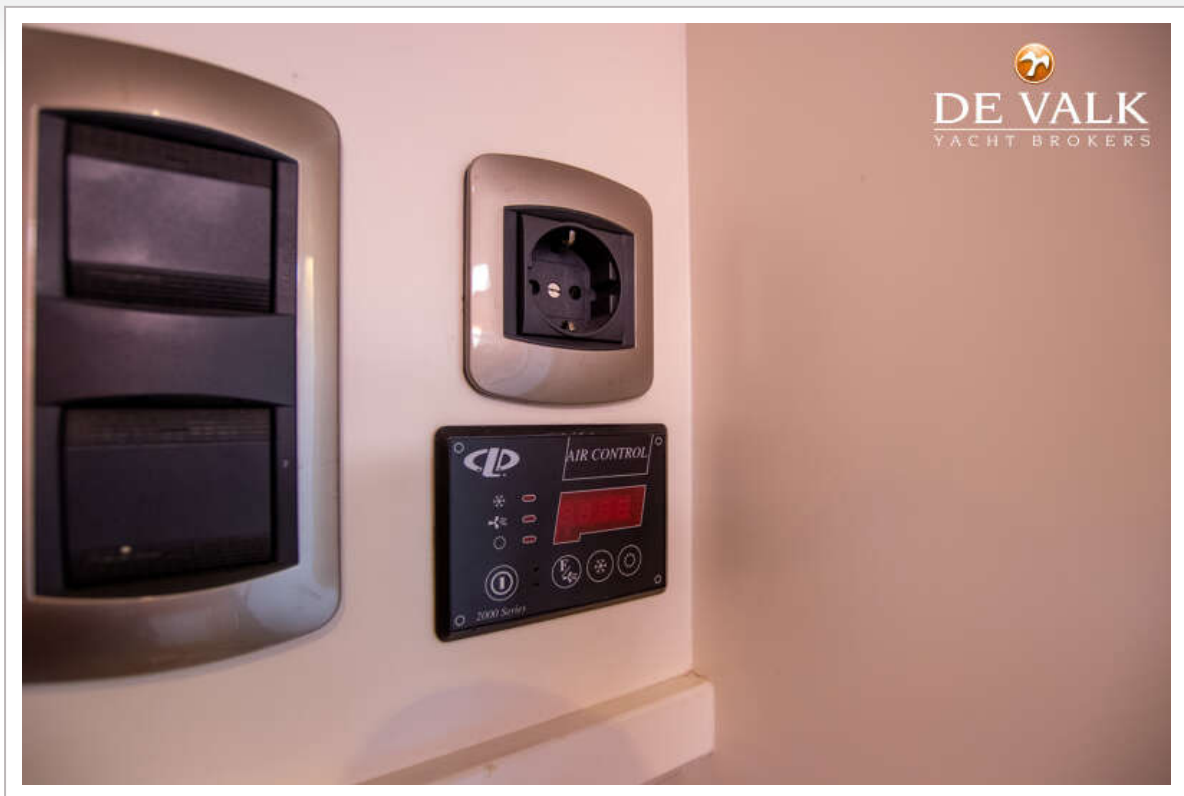


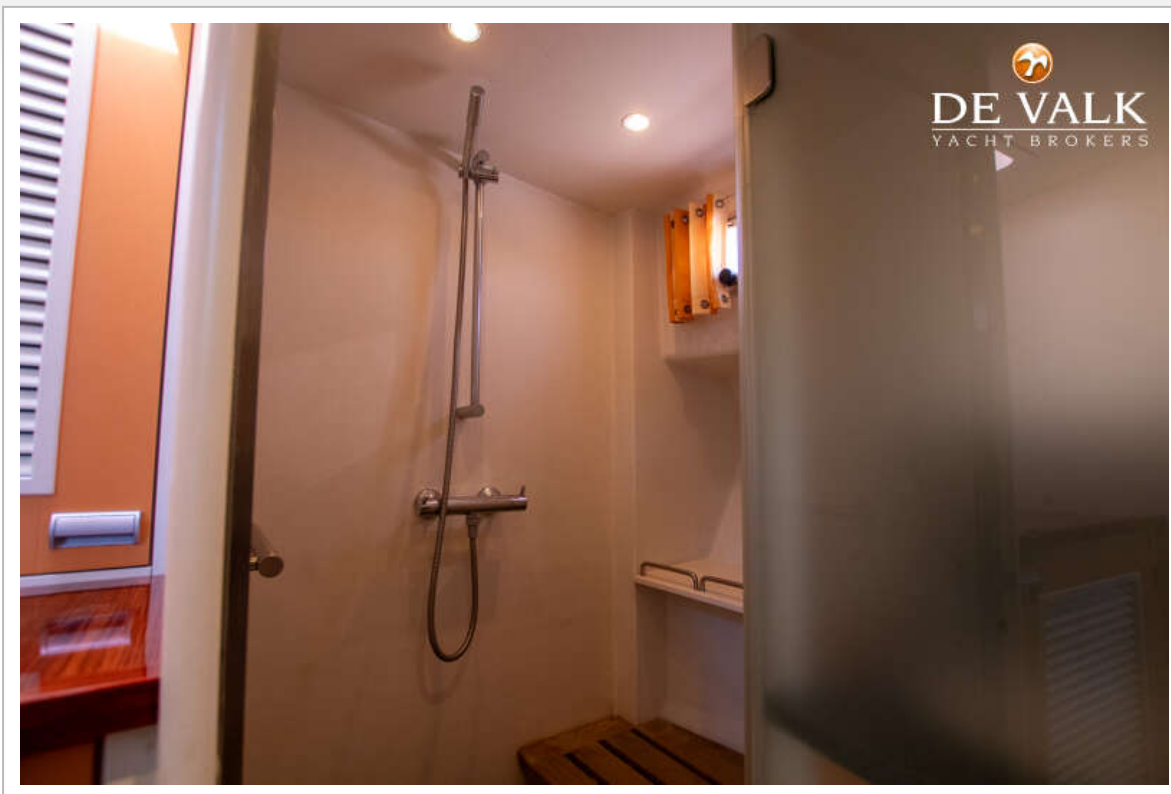


GUARDIAN 50

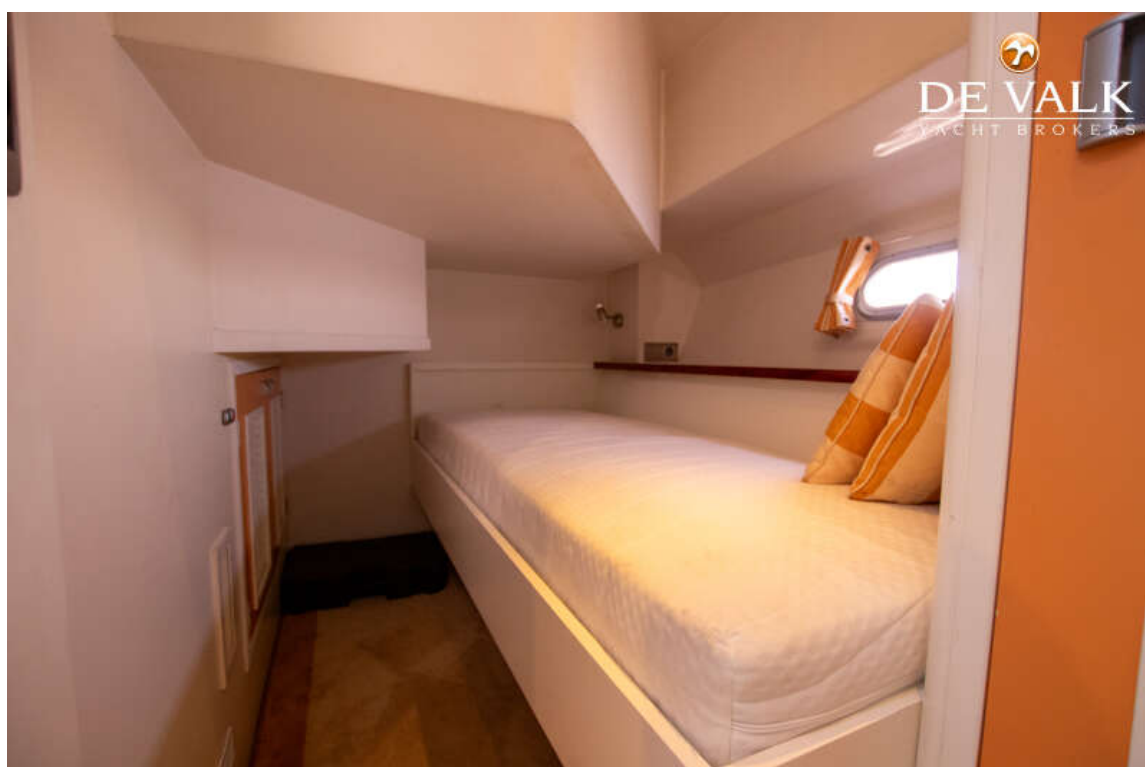


GUARDIAN 50





GUARDIAN 50



GUARDIAN 50



GUARDIAN 50



GUARDIAN 50

