



## HALLBERG RASSY 42 F SCANDINAVIA



# HALLBERG RASSY 42 F SCANDINAVIA

## BROKER'S COMMENTS

The Hallberg Rassy 42 was designed by German Frers, in total 181 were built, of which the last 128 were the MK II version, like this one and is characterized by its extraordinary quality and excels in a wide range of areas, including sailing on the high seas. The boat is easy to handle with an electric furling mast and an electric winch. Manoeuvring is easy with the bowtruster. The interior is beautiful, she has two sofas in the saloon the owners cabin in the aft is very spacious with an ensuite bathroom. She is now available for a visit at our sales office in Sint Annaland.

*Jan-Ward van Dantzig*

## SPECIFICATIONS

<b>Dimensions</b>	13.22 x 3.95 x 2.00 (m)	<b>Builder</b>	Hallberg-Rassy Varvs AB
<b>Built</b>	1998	<b>Cabins</b>	2
<b>Material</b>	GRP	<b>Berths</b>	7
<b>Engine(s)</b>	1 x Volvo Penta TMD22 diesel	<b>Hp/Kw</b>	72.00 (hp), 52.99 (kw)
<b>Asking price</b>	sold (VAT )	<b>Lying</b>	at sales office

## CONTACT

<b>Sales office</b>	De Valk Sint Annaland B.V.	<b>Telephone</b>	+31 (0)166 601 000
<b>Address</b>	Koelhuisweg 4 4697 RM Sint Annaland NL	<b>E-mail</b>	sintannaland@devalk.nl

## DISCLAIMER

These particulars are given in good faith as supplied but cannot be guaranteed.



# HALLBERG RASSY 42 F SCANDINAVIA

## GENERAL

Model	HALLBERG RASSY 42 F SCANDINAVIA
Type	sailing yacht
LOA (m)	13,22
LWL (m)	10,35
Beam (m)	3,95
Draft (m)	2,00
Air draft (m)	19,50
Headroom (m)	1,95
Year built	1998
Builder	Hallberg-Rassy Varvs AB
Country	Sweden
Designer	German Frers
Displacement (t)	12,5
Ballast (tonnes)	lead in GRP 4,7
CE norm	A
Hull material	GRP
Hull colour	white With a dark blue waterline and a dark blue striping
Hull shape	round-bilged
Keel type	fin keel with bulb
Superstructure material	GRP
Rubbing strake	Integrated GRP rubbing strake with a brass protection strip
Deck material	GRP
Deck finish	teak
Superstructure deck finish	teak
Cockpit deck finish	teak & the cockpit floor is covered with a teak grating
Antifouling (year)	2024
Dorades	5 x Plastic air-vent on deck
Window frame	aluminium
Window material	perspex
Deckhatch	4 x Lewmar



# HALLBERG RASSY 42 F SCANDINAVIA

<b>Portholes</b>	aluminium 13 x, 7 of these are opening
<b>Insulation</b>	foam (PVC). Isolated above water line against heat & cold
<b>Fuel tank (litre)</b>	stainless steel 420
<b>Level indicator (fuel tank)</b>	yes
<b>Freshwater tank (litre)</b>	stainless steel 685
<b>Level indicator (freshwater)</b>	yes
<b>Blackwater tank (litre)</b>	stainless steel 2 x
<b>Blackwater tank extraction</b>	deck extraction + uw line Outlet sea cocks from both tanks renewed in 2023
<b>Wheel steering</b>	With an Off-White cover over the steering wheel & pedestal
<b>Outside helm position</b>	cable steering Solimar pedestal with a leather covered stainless steering wheel
<b>Emergency tiller</b>	Stainless steel
<b>More info on paintwork</b>	The waterline and superstructure have been repainted.
<b>Extra info</b>	Stowage in aft deck lazarette locker & dry large cockpit locker
<b>Extra info</b>	Rudder and steering system serviced in 2024.



## Extra info

The HR 42F was designed by Argentinean German Frers and built by Hallberg Rassy in Sweden with CE category A - Unlimited ocean voyages. A total of 181 copies were built, of which the last 128 were the Mk II version. The HR 42F Mk II is characterized by its extraordinary quality and excels in a wide range of areas, including sailing on the high seas. See the following press excerpt from the HR website about the model. The Swedish Yachting Magazine På Kryss & Till Rors, says: "Exquisite finish and every detail is well thought out. This boat elicits your confidence from the pervading grid structure at floor level, the lamination of hull and deck, rig, how the keel and rudder is secured to the least little detail on deck as well as inside. Behind each Hallberg-Rassy boat stands a craftsman, who personally tests every piece of equipment on extended trial-cruises, before taken in to production. Such attention to detail is unusual in boat building, but it shows. We keep looking but there is nothing to criticize.....Our conclusion is, that designer Germán Frers' entry to Ellös has resulted in boats that combines the best from two different worlds. The irreplaceable feeling of fine craftsmanship, the unbeatable living standard aboard is still there, as well as the secure feeling of a full-keeled boat with excellent sea-going qualities, especially in rough weather. We have found a whole new idea of cruising yachts realized in this boat....The Hallberg-Rassy 42F makes you feel safe and secure. You may feel like sailing anywhere, anytime, in any weather." She is built under supervision of Lloyd's Register of Shipping.

## ACCOMMODATION

Cabins	2
Berths	7
Interior	mahogany All interior woodwork in light mahogany matt silk finish
Floor	teak and holly With blue carpet
Aft deck	yes
Saloon	Saloon with two sofa's
Headroom saloon (m)	1,98
Heating	diesel ducted hot air Webasto Airtop 32
Chart table	On port side



# HALLBERG RASSY 42 F SCANDINAVIA

<b>Aft Cabin</b>	With a 2-persons berth on starboard & a 1-person berth on port
<b>Dinette to convert into berth</b>	A double bed can be created in the saloon by raising the port backrest and placing a filler piece.
<b>Galley</b>	On starboard side
<b>Countertop</b>	Duropol
<b>Sink</b>	stainless steel 2 x
<b>Cooker</b>	calor gas 2 x Burner Optimus
<b>Oven</b>	Optimus
<b>Fridge</b>	Toploader koelkast met een Danfoss/Frigomatic compressor
<b>Freezer</b>	Small freezer compartment in the fridge
<b>Hot water system</b>	220V + engine
<b>Water pressure system</b>	electrical PAR MAX-4 with Jabsco Accumulator tank & a waterfilter
<b>Manual and/or foot pump</b>	In the galley
<b>Owners cabin</b>	double bed And single bed - in the aft cabin - Headroom : 1,91 m
<b>Bed length (m)</b>	2,00 x 1,20 & 2,00 x 1,15
<b>Wardrobe</b>	hanging/drawers/shelves
<b>Bathroom</b>	en suite Headroom : 1,84 m
<b>Toilet</b>	en suite In the bathroom
<b>Toilet system</b>	electric
<b>Wash basin</b>	in the bathroom With a Mora mixer tap
<b>Shower</b>	en suite
<b>Extra info</b>	Neptune mattresses in aft cabin
<b>Guest cabin 1</b>	v-bed In front cabin - Headroom : 1,92 m
<b>Bed length (m)</b>	1,95 x 1,50
<b>Wardrobe</b>	hanging and shelves
<b>Bathroom</b>	shared Headroom : 1,92 m
<b>Toilet</b>	shared In the bathroom
<b>Toilet system</b>	electric
<b>Wash basin</b>	in the bathroom With a Mora mixer tap
<b>Shower</b>	shared With an electric Flowjet shower pump



# HALLBERG RASSY 42 F SCANDINAVIA

## Extra info

New in 2019 : Dark gray upholstery

## Extra info

Blue curtains for the windows and the deck hatches

## MACHINERY

### No of engines

1

### Make

Volvo Penta

### Type

TMD22

### HP

72

### kW

52.99

### Fuel

diesel

### Year installed

1998

### Maximum speed (kn)

8

### Cruising speed (kn)

7

### Consumption (l/hr)

5

### Engine hours

1430

### Engine cooling system

freshwater heat exchanger

### Drive

shaft

### Shaft seal

yes

### Engine controls

mechanical

### Gearbox

mechanical

### Bowthruster

electric Side Power 7 hp

### Exhaust

watercooled

### Propeller type

feathering Maxprop - serviced in 2024

### Propeller blades

3

### Propeller shaft material

stainless steel - Propeller shaft has been serviced in 2024

### Manual bilge pump

New in 2023

### Electric bilge pump

yes

### Bilge alarm

yes

### Electrical installation

12 & 220 Volt

### Start battery

1 x 140 AH Wilco Semi-Traction

### Service battery

3 x 140 Ah Wilco Semi-Traction



# HALLBERG RASSY 42 F SCANDINAVIA

Bowthruster battery	1 x 140 AH Wilco Semi-Traction
Battery charger	Victron Pallas 12V/50A
Diode battery combiners	yes
Shorepower	with cable
Extra info	A new RPM-meter (including a new engine hour counter) was installed in 2023. There were 1,365 engine hours on the old engine hour counter. The timing belt and the turbo have been renewed in 2024, and also a major maintenance service was carried out (including adjusting of the engine valves).
Extra info	The bow thruster can be operated with foot buttons (on the cockpit floor, behind the steering position). Bow thruster has been serviced in 2024.
Extra info	Diesel filter with a water separator. 50 A Alternator. Electric engine room ventilation.

## NAVIGATION

Compass	Suunto on pedestal
Multi control display	Auohelm ST50 Multi & 1x Autohelm ST50 Navdata
Depth sounder	Auohelm ST50
Log	Auohelm ST50
Windset	Auohelm ST50
VHF	Shipmate RS 8300 & extra handset in cockpit
Autopilot	Auohelm ST7000 Type II
Radar	Furuno 1832 with a 4 kW antenna in the mast
Plotter/GPS	New in 2022 : Raymarine E-Series C-125
Electronis chart(s)	Navionics
AIS transceiver	New in 2024 : Simrad NAIS-500 & NSPL-500 Splitter
EPIRB	New in 2024 : Ocean Signal Epirb1
Navigation lights	3-color masthead-, anchor-, steaming-, bow en stern light
Extra info	5 x 220 Volt socket

## EQUIPMENT





# HALLBERG RASSY 42 F SCANDINAVIA

Fixed windscreen	Strong aluminium windscreen with opening centre section
Sprayhood with grab rail	yes
Cockpit cover	yes
Cockpit table	Varnished teak - folding & mounted on front side of the pedestal
Bathing platform	Covered with teak
Boarding ladder	stainless steel
Bow ladder	Stainless steel - removable
Deck shower	(Hot and cold water)
Anchor	CQR Plough (20,5 KG)
Anchor chain	60 meter with a new dclasp (2023)
Windlass	electrical Lofrans Airon 12 Volt - 1.000 Watt. Serviced in 12-2023
Capstan	yes
Outboard support	Teak (on the pushpit)
Sea railing	wire Double, stainless steel
Grab rail (superstructure)	teak
Railing side opening gates	On both sides
Pushpit	Stainless steel with 2 x teak seat
Pulpit	Stainless steel
Life raft	New in 2023 : Plastimo
Life raft (pers)	container 4
Lifebuoy	Red hose shoe rescue buoy & Besto Life Saver (New in 2023)
Danbuoy	New in 2023
Radar reflector	In the masthead
Fenders	yes
Mooring lines	yes
Radio-cd player	Pioneer
Cockpit speakers	2 x
Speakers in salon	2 x
Clock - barometer	Schatz (clock inaccurate)
Fire extinguisher	3 x
Latest extinguisher survey	2023



Extinguisher in engine room	yes
Extra info	Brass protection strips at all 6 mooring cleats.
Extra info	Fire blanket.
Extra info	New in 2024 : gas pressure regulator & both gas hoses renewed in stainless steel & system has been tested.

## RIGGING

Rigging	sloop
Standing rigging	wire With aluminium Hasselfors protection tubes
Brand mast	Seldén
Material mast	aluminium
Spreaders	2 x set of spreaders
Fully battened mainsail	Elvstrom : Vertical battened furling mainsail (2011)
Stoway mast	Electric Selden Furlin
Genoa	Elvstrom : Furling Genoa with an UV protection strip (2011)
Genoa furler	Furlex 300S
Genoa cover	Blue
A-symetric spi	With a snuffer
Reefing System	main in-mast furling
Backstay adjuster	hydraulic Navtec
Boomvang	gasspring Rodkicker
Primary sheet winch	1 x Electric mainsheet Lewmar 40ST
Genoa sheetwinches	2 x Electric Lewmar 58 ST
Multifunctional winches	1 x manual Lewmar 40 ST (& 1 x Electric Lewmar 40ST)
Spi-pole	aluminium (Hanging on front side of the mast)
Extra info	Spinnaker gear. 2x V-Cam 814 (Halyard & Mainsheet jammer). Several Hallyards replaced in Dyneema, some original to replace.
Extra info	All winched have been serviced in 2023.



# HALLBERG RASSY 42 F SCANDINAVIA



# HALLBERG RASSY 42 F SCANDINAVIA





# HALLBERG RASSY 42 F SCANDINAVIA



# HALLBERG RASSY 42 F SCANDINAVIA





# HALLBERG RASSY 42 F SCANDINAVIA



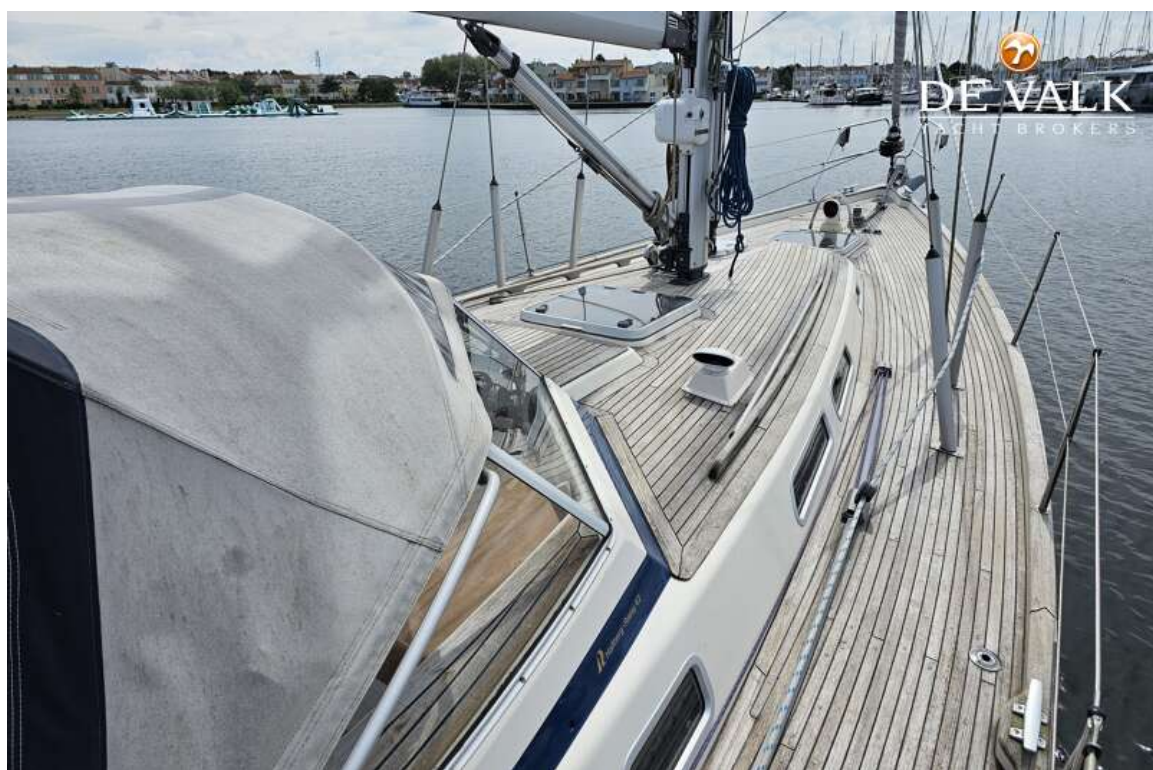


# HALLBERG RASSY 42 F SCANDINAVIA





# HALLBERG RASSY 42 F SCANDINAVIA





# HALLBERG RASSY 42 F SCANDINAVIA





# HALLBERG RASSY 42 F SCANDINAVIA

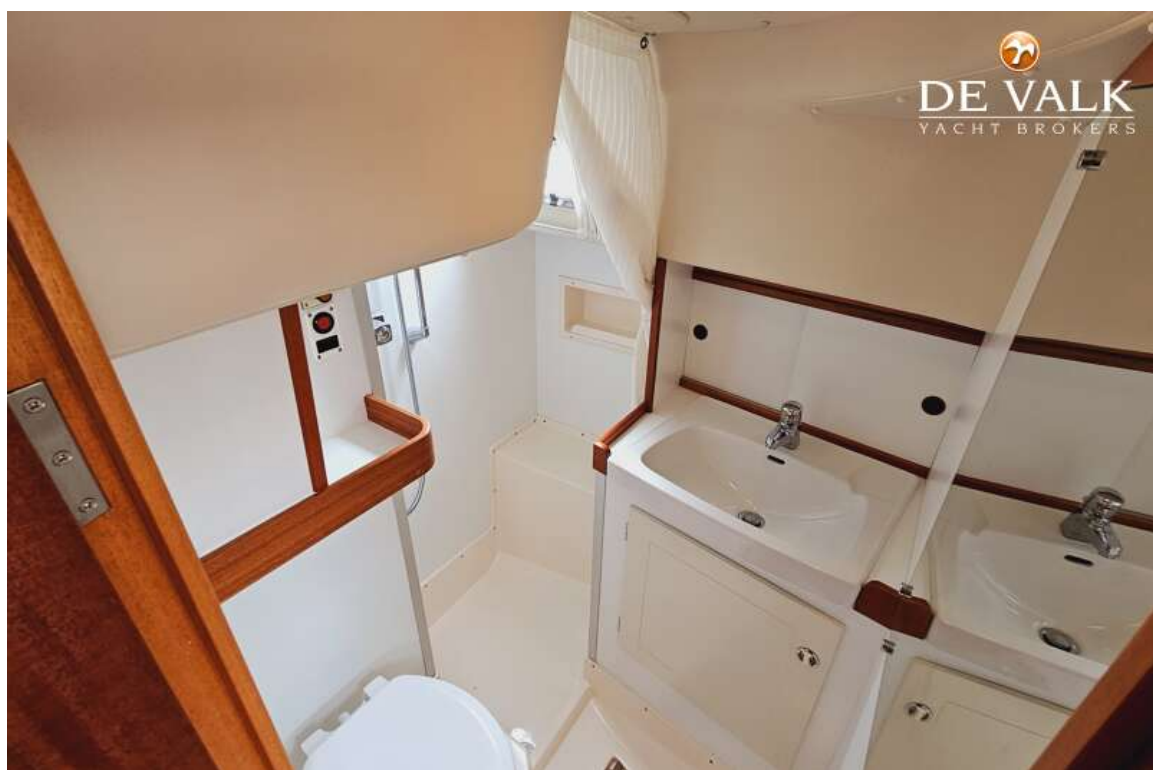




# HALLBERG RASSY 42 F SCANDINAVIA



# HALLBERG RASSY 42 F SCANDINAVIA

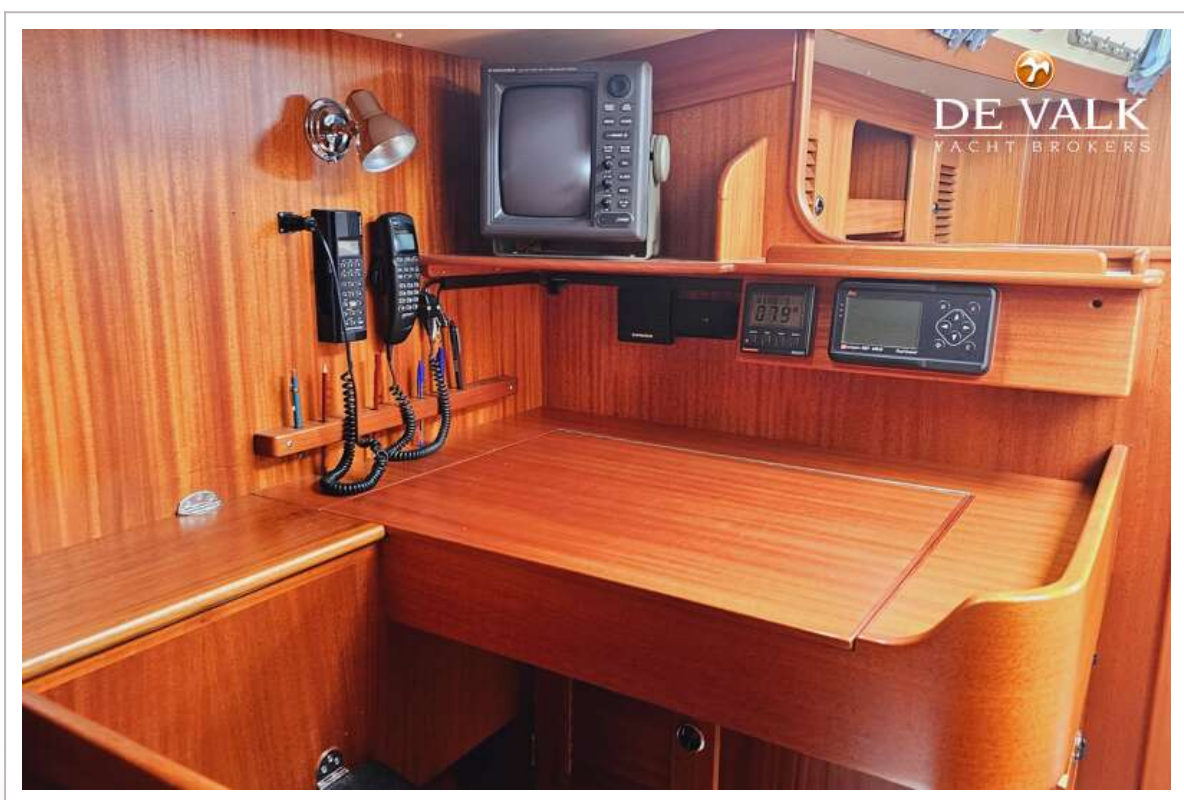




# HALLBERG RASSY 42 F SCANDINAVIA

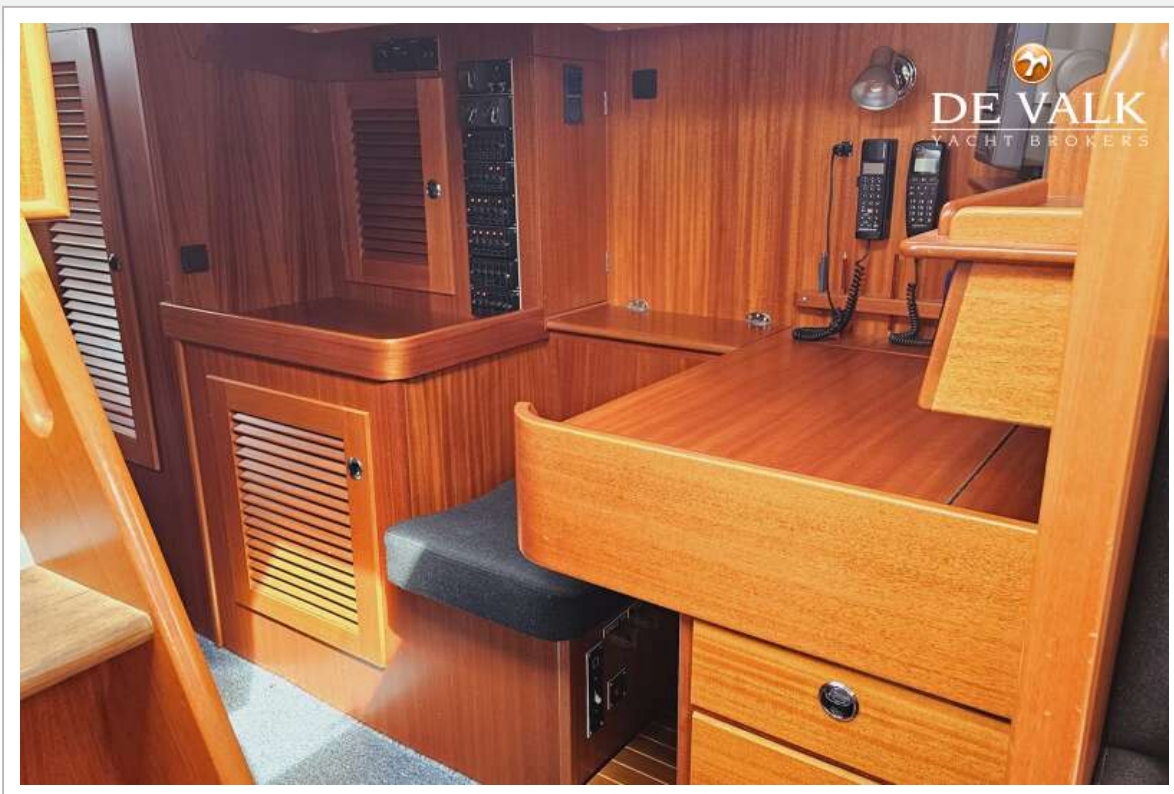


# HALLBERG RASSY 42 F SCANDINAVIA



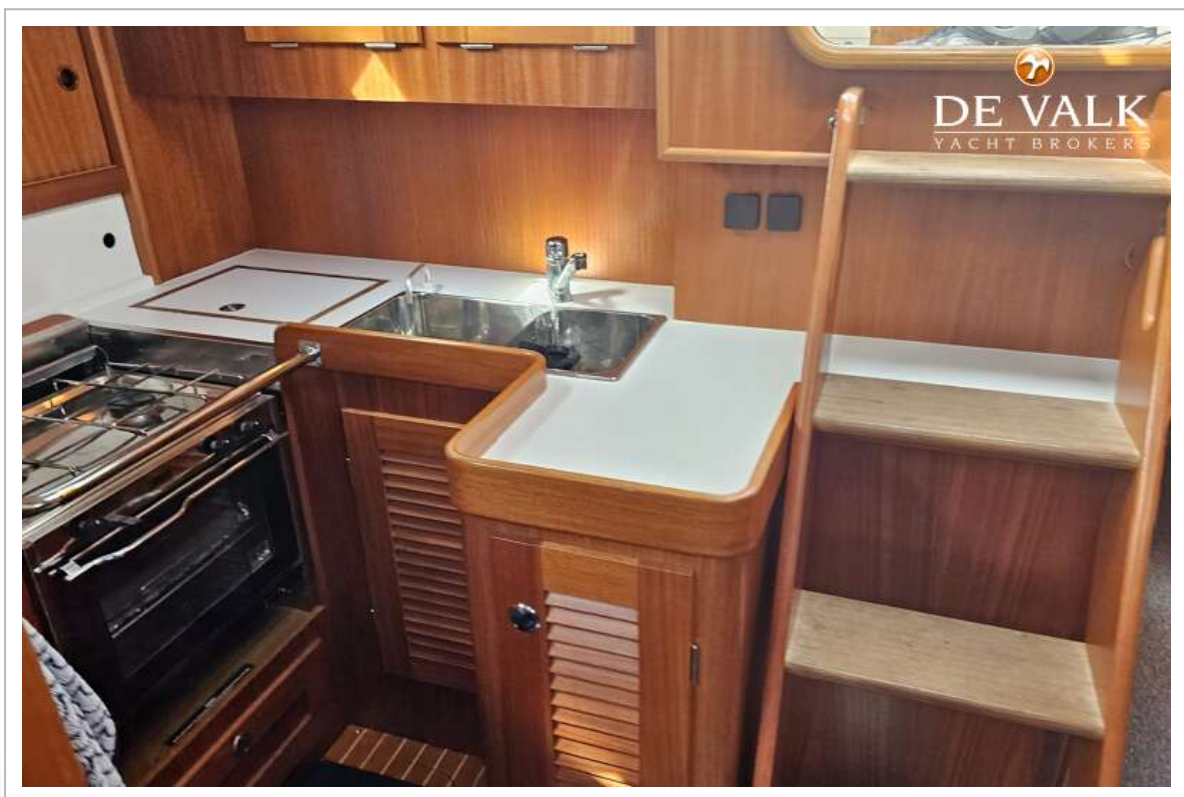


# HALLBERG RASSY 42 F SCANDINAVIA





# HALLBERG RASSY 42 F SCANDINAVIA

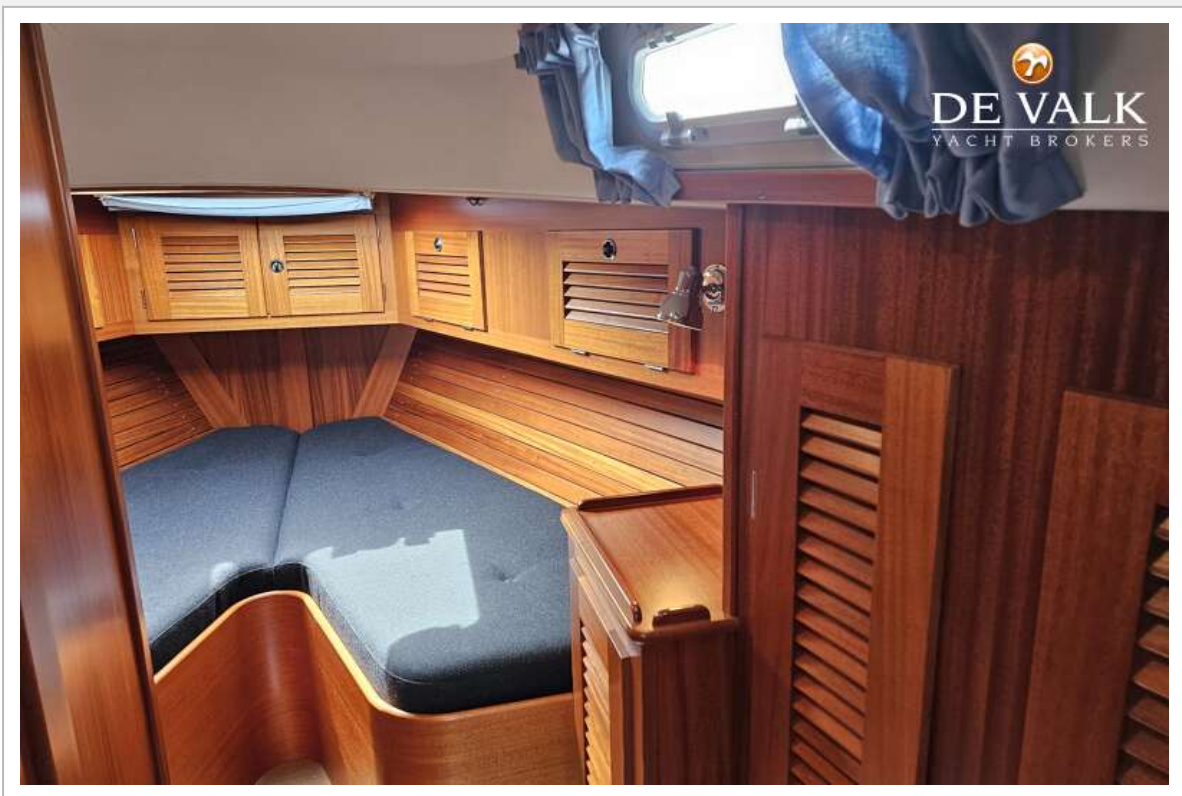


# HALLBERG RASSY 42 F SCANDINAVIA

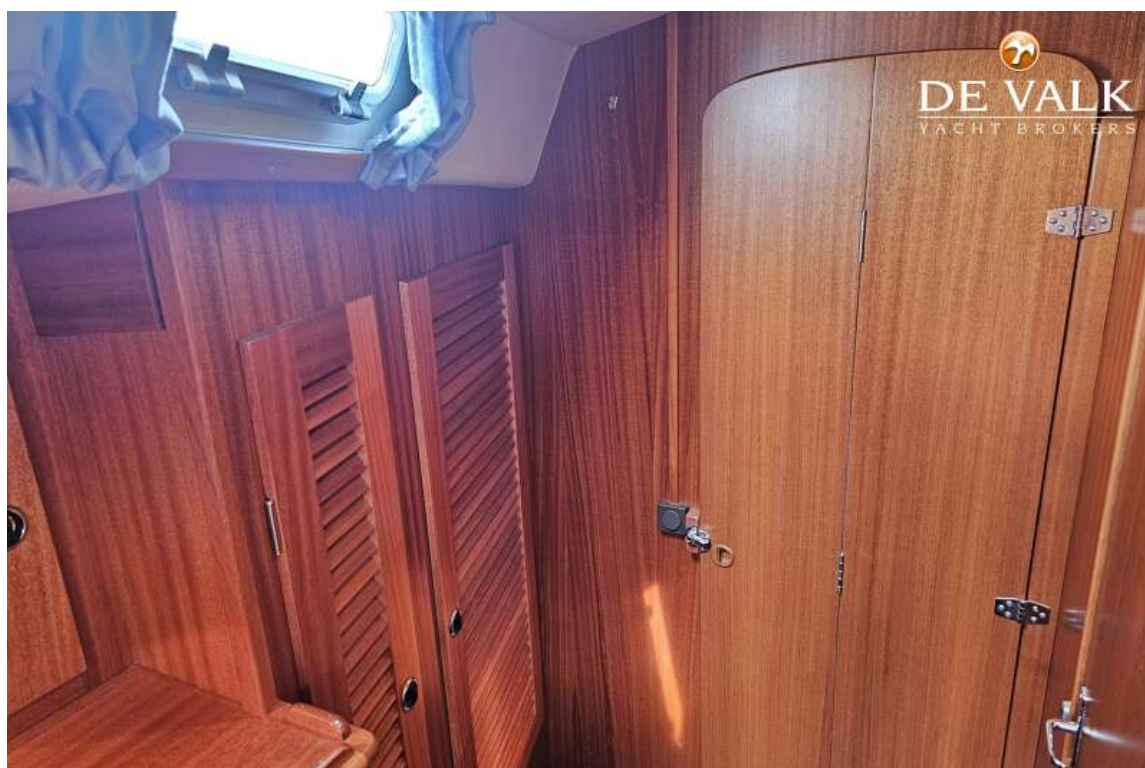




# HALLBERG RASSY 42 F SCANDINAVIA



# HALLBERG RASSY 42 F SCANDINAVIA







# HALLBERG RASSY 42 F SCANDINAVIA





# HALLBERG RASSY 42 F SCANDINAVIA



# HALLBERG RASSY 42 F SCANDINAVIA


## HR 42

DESIGN: GERMÁN FRERS

Dimensions:

Length of Hull	13.20 m
Lea	10.35 m
Beam	3.95 m
Draft	2.00 m*
Displacement	12.5 t
Lead keel	4.7 t
Sail area, Main + cruising jib	86 m²
Engine Volvo Penta	
TMD 22	56 kW/75 HP
Water tank	680 litres
Diesel tank	420 litres
Mast over water	
excl. Windax	18.75 m

\*Also available as a shallow draft version upon request.



**DE VALK**  
KONINKRIJK DER NEDERLANDEN

**Hallberg-Rassy**

