



DE VALK  
YACHT BROKERS



## BELIARD CRIGHTON 30M



DE VALK  
YACHT BROKERS

# BELIARD CRIGHTON 30M

## BROKER'S COMMENTS

Belgian shipyard construction M/S ordered by the Belgian Government to serve as a research vessel in the Arctic Cycle. Ice class hull. Yacht refitted in 2023 and powered by a new engine SOLE 272 Hp (year: 2021). She has Greek flag and Charter license.

*Sofia Iliia-Salvanou*

## SPECIFICATIONS

<b>Dimensions</b>	30.00 x 5.88 x 3.03 (m)	<b>Builder</b>	BELIARD CRIGHTON
<b>Built</b>	1961	<b>Cabins</b>	7
<b>Material</b>	Steel	<b>Berths</b>	12
<b>Engine(s)</b>	1 x SOLE SDZ-280 diesel	<b>Hp/Kw</b>	272.00 (hp), 200.19 (kw)
<b>Asking price</b>	€ 390.000 (VAT Exempt)	<b>Lying</b>	elsewhere / Not at sales office

## CONTACT

<b>Sales office</b>	De Valk Corfu	<b>Telephone</b>	(+30) 6948681503
<b>Address</b>	New Port of Corfu, near Gouvia Marina 490 83 Corfu GR	<b>E-mail</b>	corfu@devalk.nl

## DISCLAIMER

These particulars are given in good faith as supplied but cannot be guaranteed.



# BELIARD CRIGHTON 30M

## GENERAL

<b>Model</b>	BELIARD CRIGHTON 30M
<b>Type</b>	motorsailer
<b>LOA (m)</b>	30,00
<b>LWL (m)</b>	23,10
<b>Beam (m)</b>	5,88
<b>Draft (m)</b>	3,03
<b>Year built</b>	1961
<b>Builder</b>	BELIARD CRIGHTON
<b>Country</b>	Belgium
<b>Designer</b>	Noel A Van Mallegheem & A Sellslagh
<b>Displacement (t)</b>	118
<b>Gross tonnage</b>	66
<b>Net tonnage</b>	19
<b>Hull material</b>	steel
<b>Hull colour</b>	black
<b>Hull thickness (mm)</b>	Checked 15.11.2019
<b>Hull shape</b>	round-bilged
<b>Keel type</b>	long keel
<b>Superstructure material</b>	steel
<b>Deck material</b>	steel
<b>Deck finish</b>	teak
<b>Superstructure deck finish</b>	paint
<b>Cockpit deck finish</b>	teak
<b>Antifouling (year)</b>	2023
<b>Window frame</b>	steel
<b>Window material</b>	glass
<b>Deckhatch</b>	yes
<b>Portholes</b>	yes
<b>Fuel tank (litre)</b>	12.000
<b>Freshwater tank (litre)</b>	10.000



# BELIARD CRIGHTON 30M

Blackwater tank extraction	5.000
Wheel steering	yes
Outside helm position	yes
Extra info	ICE CLASS STEEL HULL
Extra info	REFIT 2023

## ACCOMMODATION

Cabins	7
Berths	12
Crew cabin	yes
Crew berths	2
Floor	teak
Saloon	yes
Air-conditioning	In the salon only
Navigation center	yes
Dinette	yes
Galley	yes
Sink	yes
Cooker	yes
Oven	yes
Microwave	yes
Fridge	yes
Freezer	Deep freezer
Dishwasher	yes
Coffee maker	yes
Owners cabin	double bed
Wardrobe	yes
Bathroom	en suite
Toilet	yes
Toilet system	electric
Wash basin	yes



# BELIARD CRIGHTON 30M

Shower	yes
Guest cabin 1	single bed
Wardrobe	yes
Bathroom	separate
Toilet	separate
Toilet system	electric
Guest cabin 2	single bed
Wardrobe	yes
Bathroom	separate
Toilet	separate
Toilet system	electric
Guest cabin 3	single bed
Wardrobe	yes
Bathroom	yes
Toilet	separate
Toilet system	electric
Guest cabin 4	single bed
Wardrobe	yes
Bathroom	yes
Toilet	separate
Toilet system	electric
Crew cabin(s)	1 cabin with 2 Single berths, no wc
Extra info	Plus one cabin at bow, twin single berths, no wc
Washing machine	yes

## MACHINERY

No of engines	1
Make	SOLE
Type	SDZ-280
HP	272
kW	200.19



# BELIARD CRIGHTON 30M

Fuel	diesel
Year installed	2021
Maximum speed (kn)	11
Cruising speed (kn)	10
Consumption (l/hr)	20
Range (nm)	4500
Engine hours	3122
Drive	shaft
Shaft seal	yes
Gearbox	yes
Bowthruster	yes
Propeller type	feathering
Manual bilge pump	yes
Electric bilge pump	yes
Electrical installation	yes
Generator	SOLE DIESEL 19,4 Kw
Generator 2	ONAN 13,5 Kw
Battery charger	yes
Watermaker	100 lt / h

## NAVIGATION

Compass	yes
Depth sounder	yes
Log	yes
Windset	yes
VHF	X 2
Autopilot	yes
Radar	Display 12 INCH RAYMARINE AXIOM PRO 12
GPS	X 2
Plotter	yes
Navtex	yes



EPIRB	yes
Camera	yes
Navigation lights	yes
Loudhailer	yes

## EQUIPMENT

Fixed windscreen	yes
Sprayhood	yes
Sun awning	yes
Cockpit cushions	yes
Cockpit table	yes
Boarding ladder	yes
Gangway	yes
Deck shower	yes
Anchor	yes
Anchor chain	125 m
Anchor 2	yes
Anchor chain	90 m
Windlass	Hydraulic
Dinghy	GRP 4,25m
Outboard	TOHATSU 8 Hp
Sea railing	yes
Life raft	yes
Lifejackets	yes
Fenders	yes
Mooring lines	yes
Spare parts	yes
Tools	yes
TV	LCD 50 in the saloon
Radio-cd player	yes
Cockpit speakers	yes



# BELIARD CRIGHTON 30M

Clock - barometer	yes
Fire extinguisher	yes
Extinguisher in engine room	yes
Auto extinguisher system	yes
Extra info	CCTV Camera in engine room & deck

## RIGGING

Rigging	ketch
Mainsail	yes
Mizzen	yes
Genoa	X 2 PLUS 2 SPARE



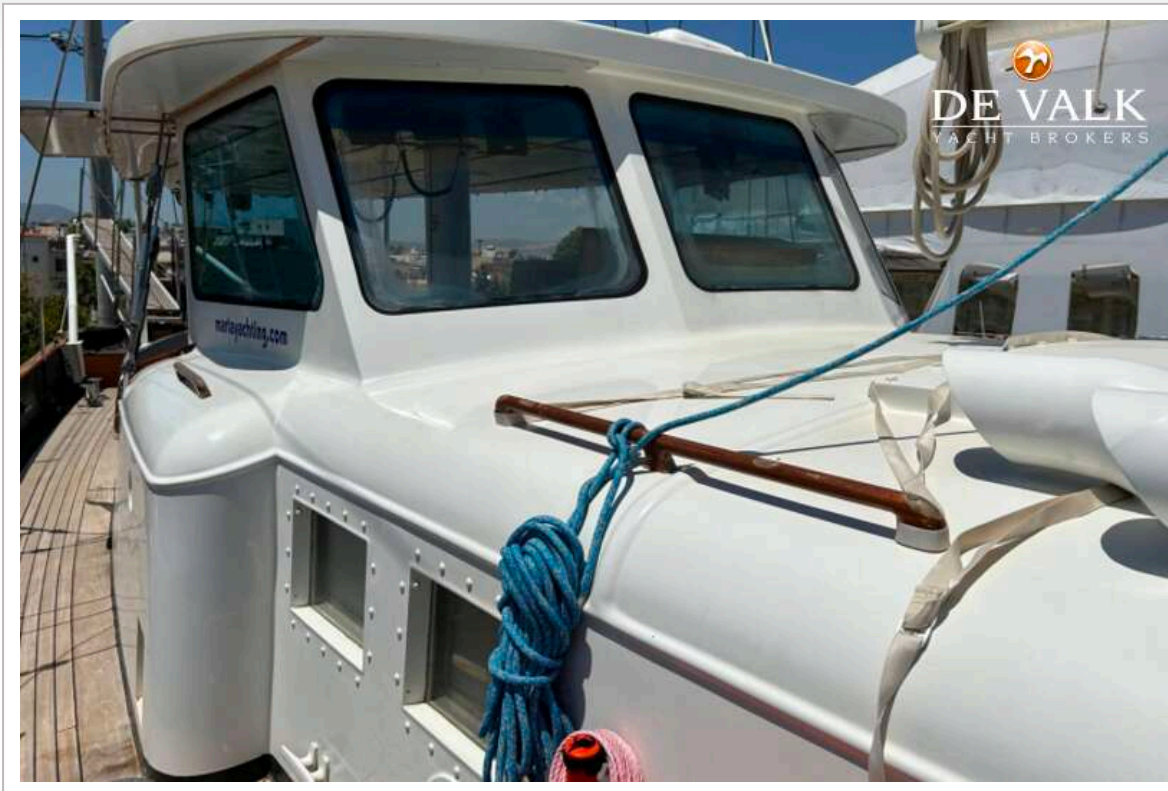
# BELIARD CRIGHTON 30M



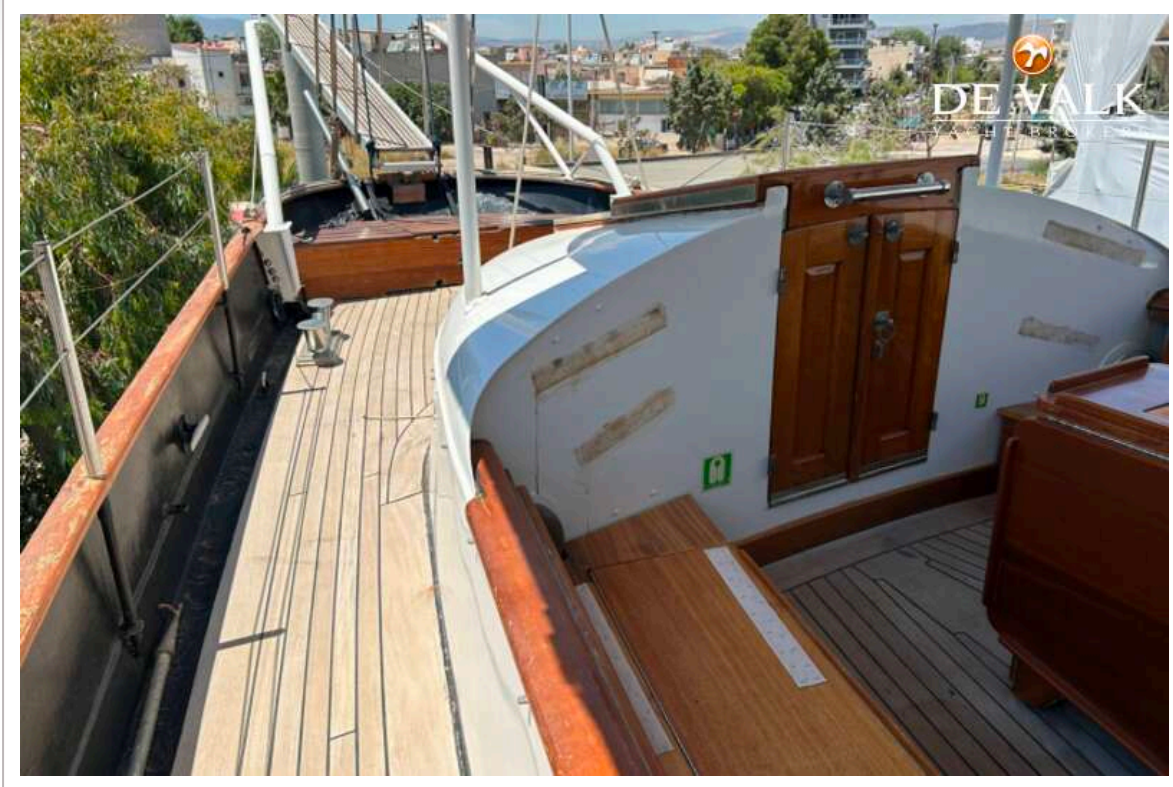
# BELIARD CRIGHTON 30M



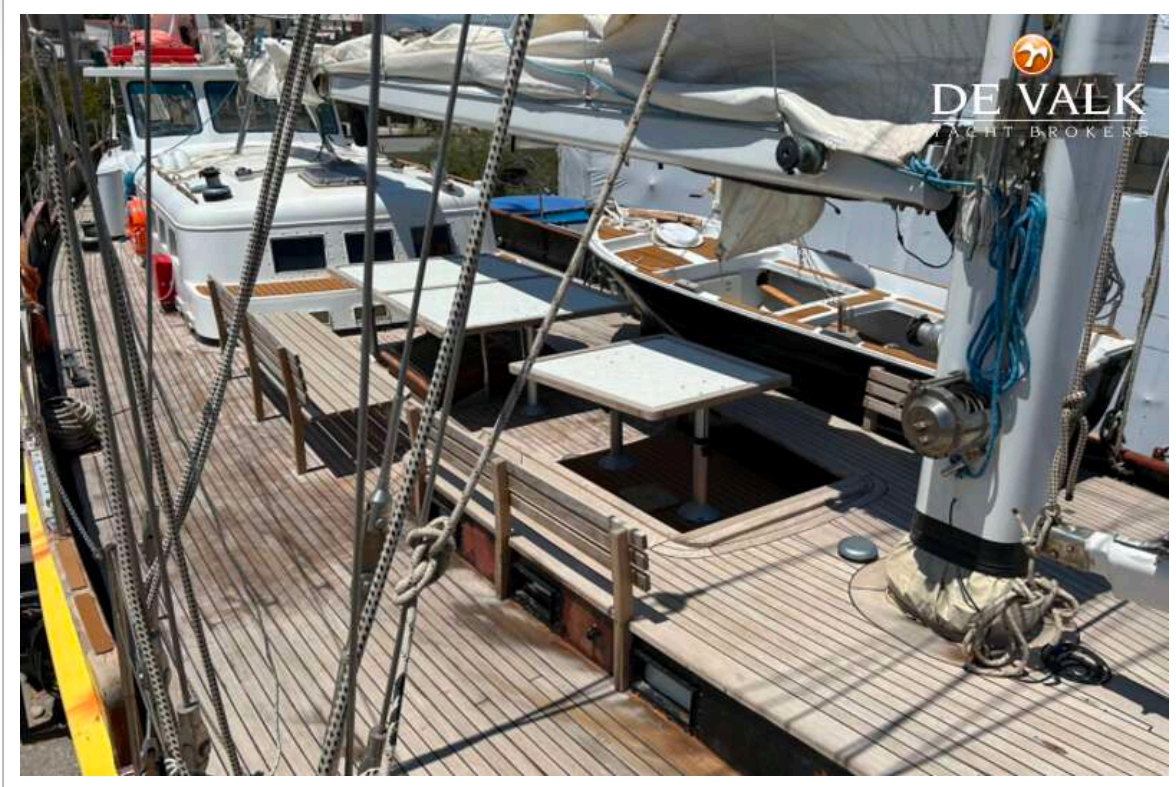
# BELIARD CRIGHTON 30M



# BELIARD CRIGHTON 30M



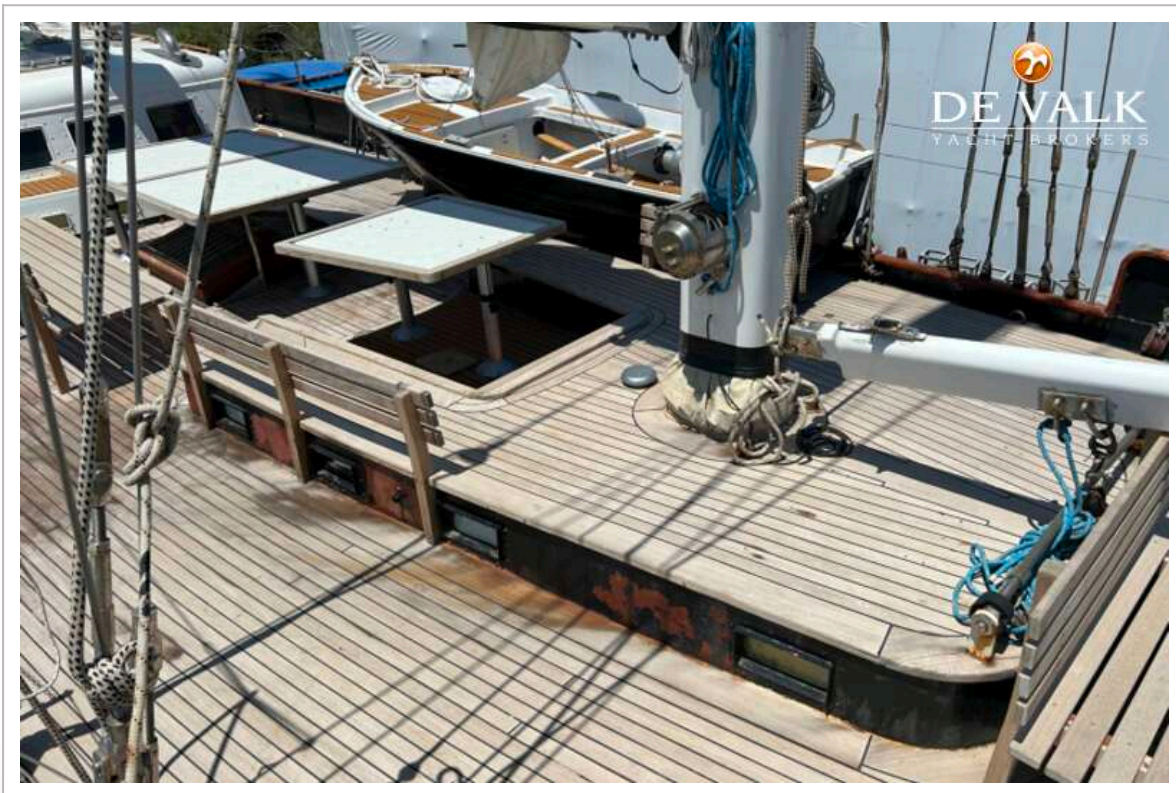
# BELIARD CRIGHTON 30M



# BELIARD CRIGHTON 30M



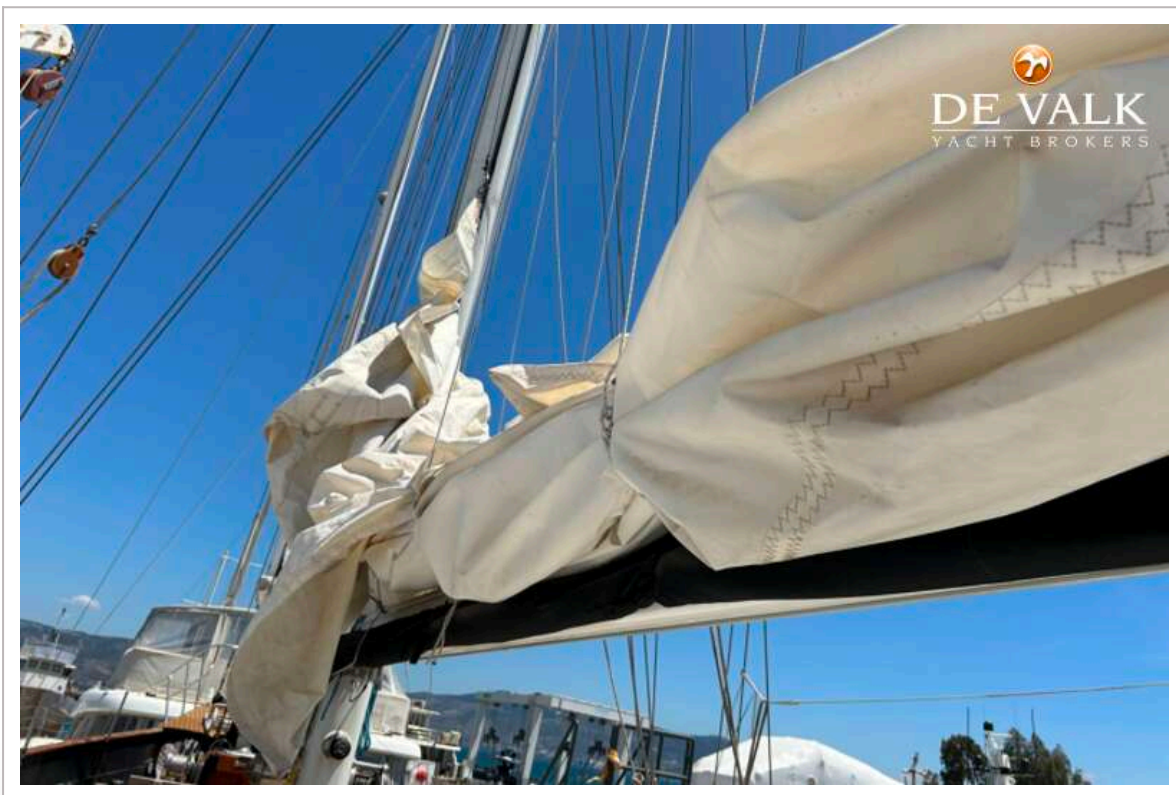
# BELIARD CRIGHTON 30M



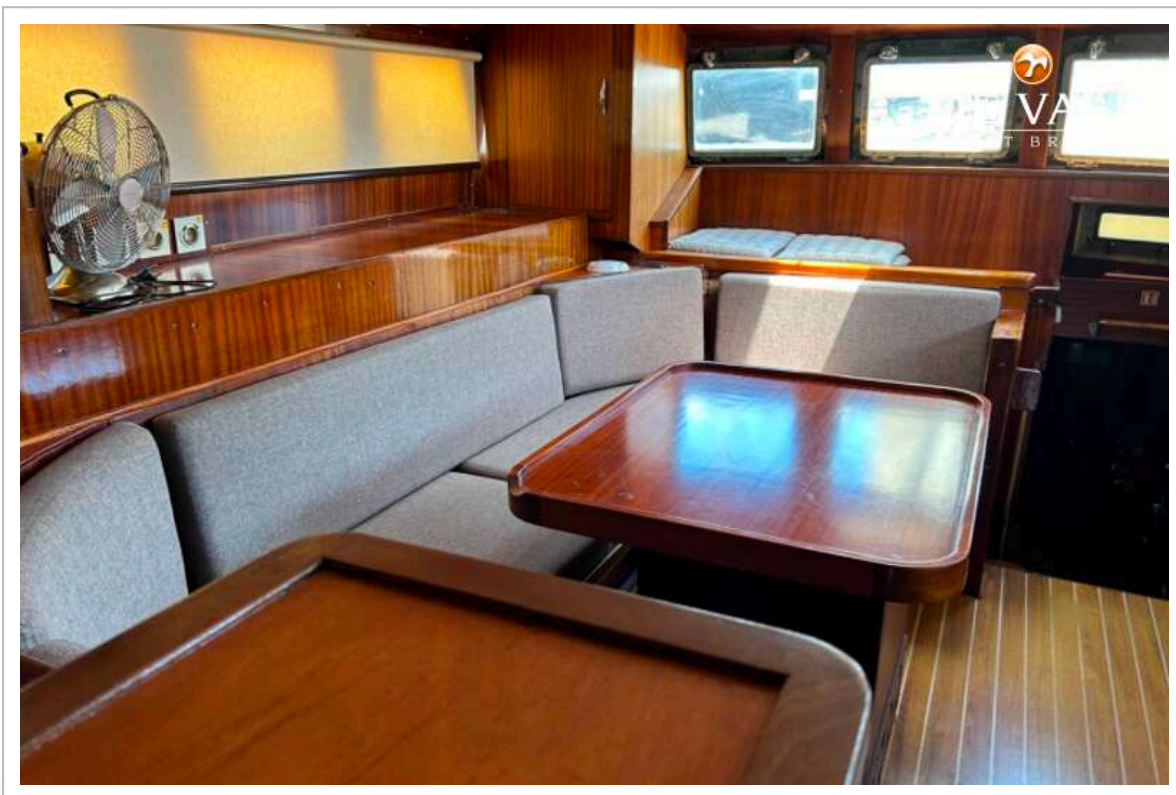
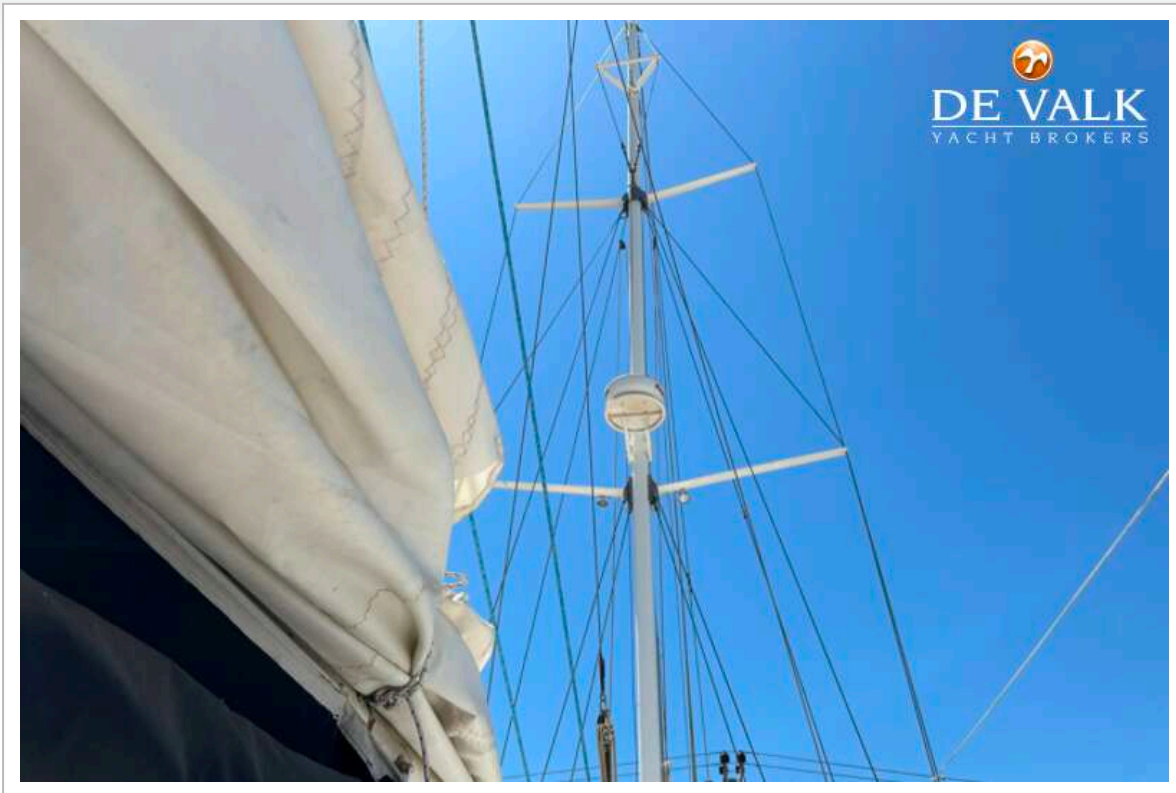
# BELIARD CRIGHTON 30M



# BELIARD CRIGHTON 30M



# BELIARD CRIGHTON 30M



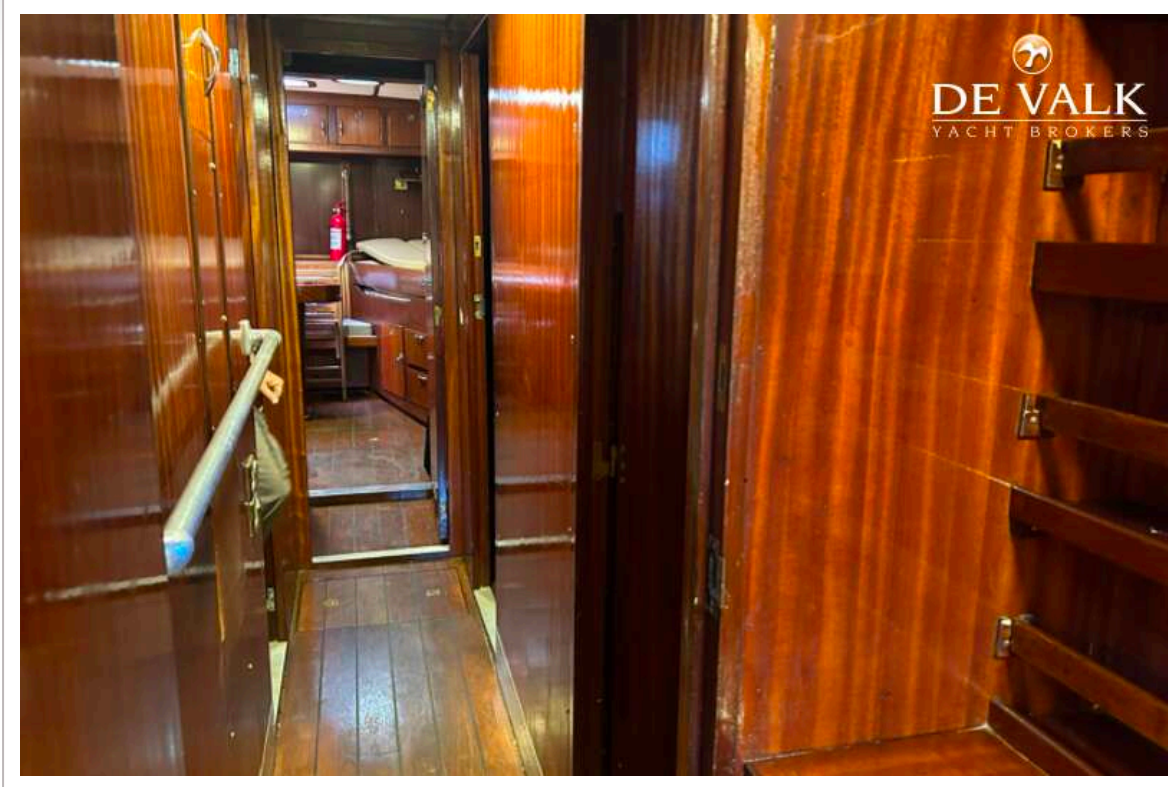
# BELIARD CRIGHTON 30M



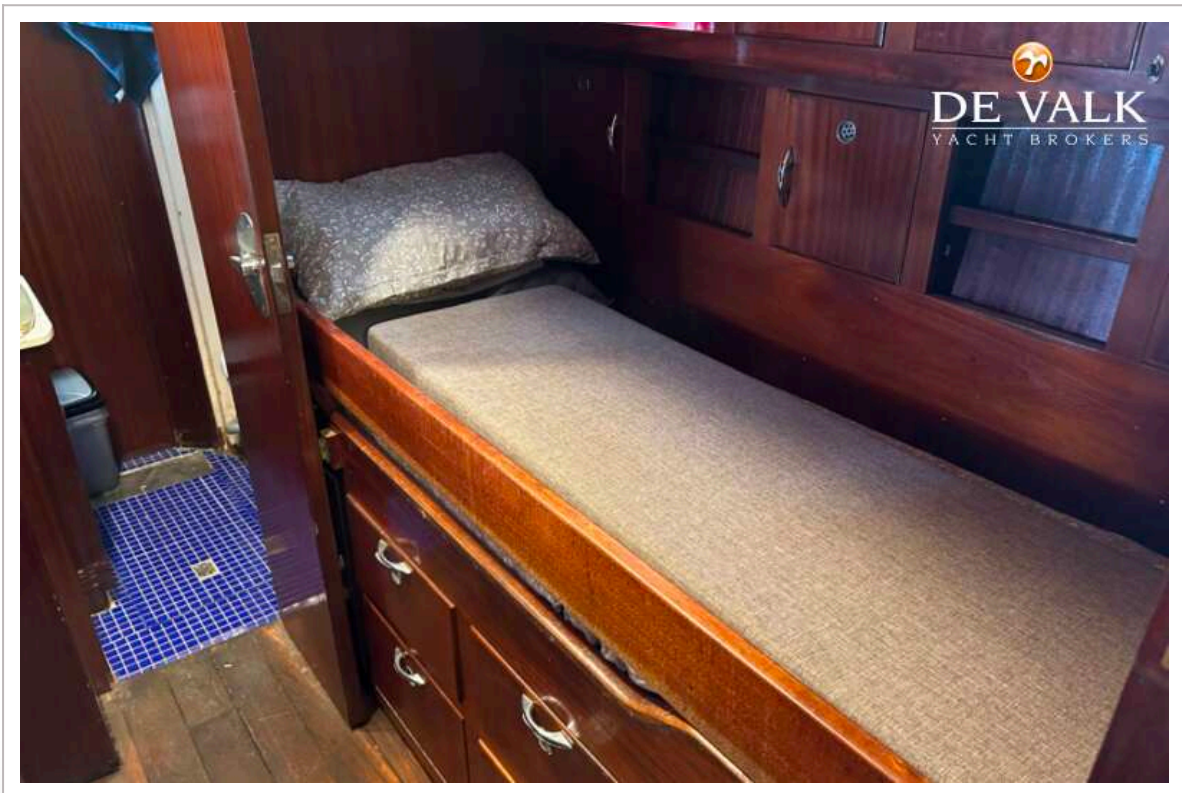
# BELIARD CRIGHTON 30M



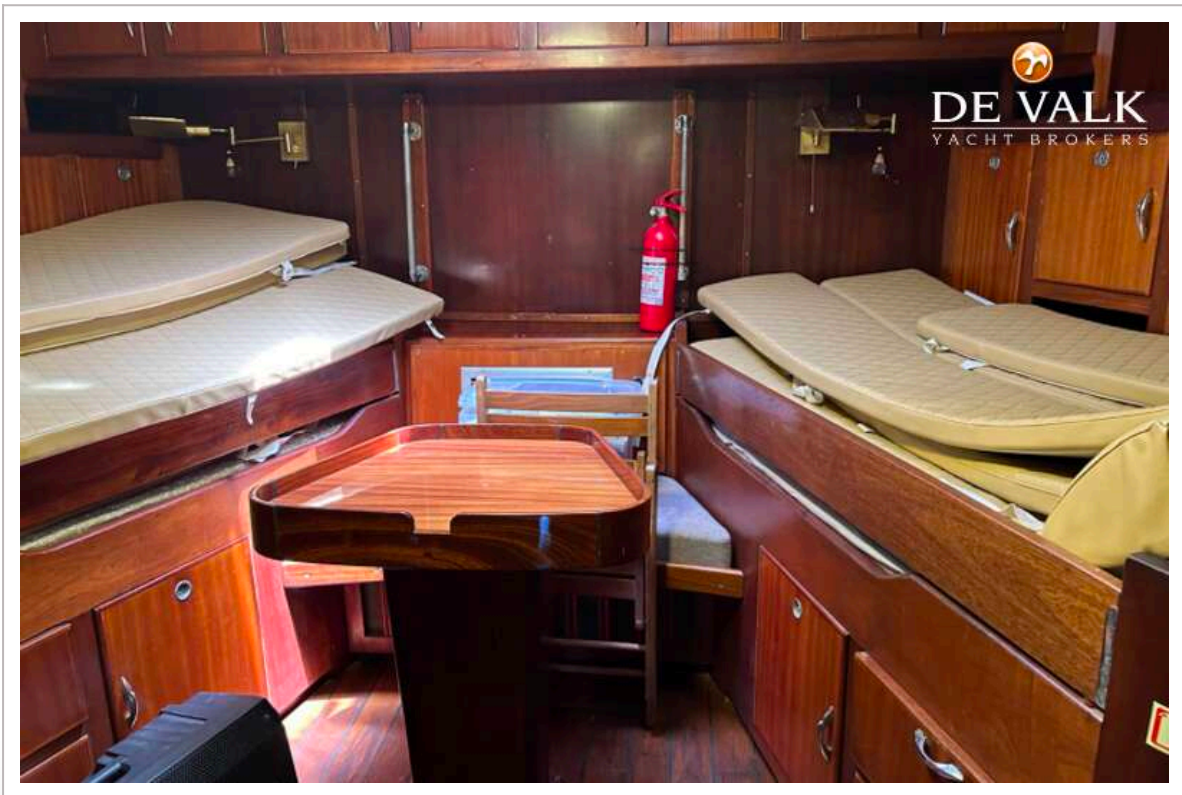
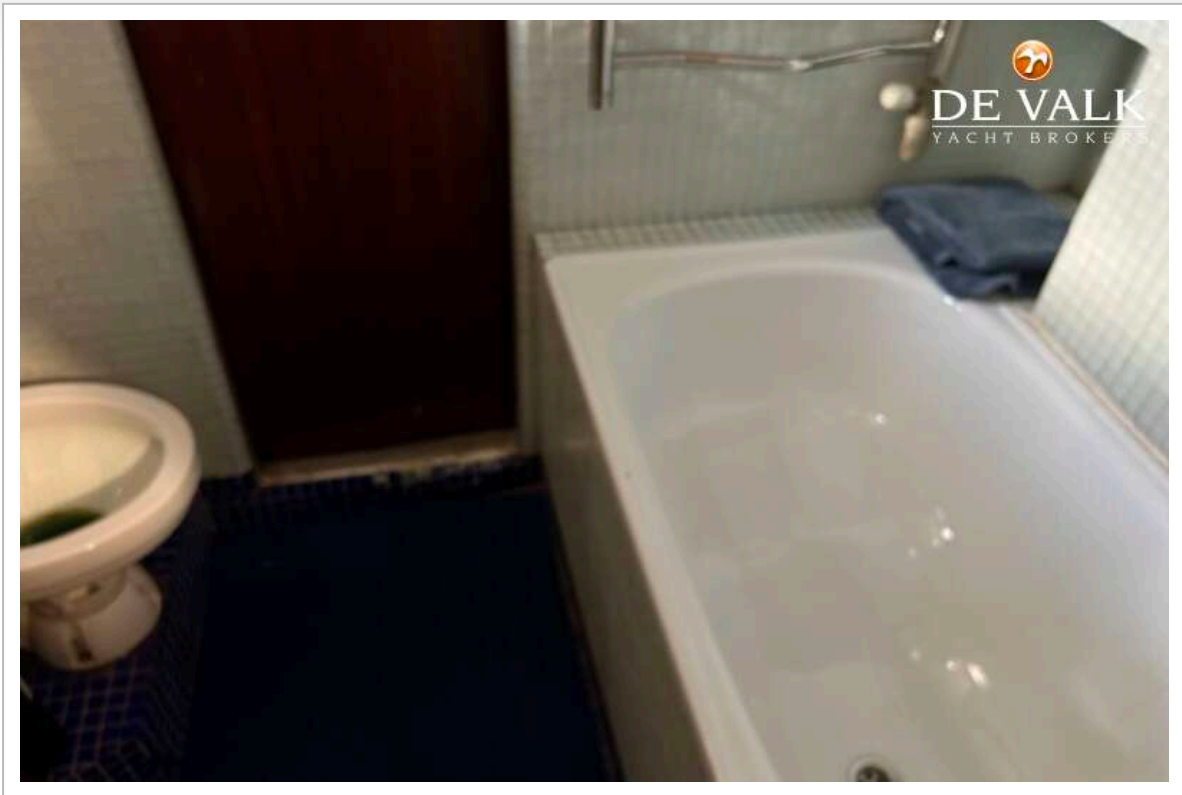
# BELIARD CRIGHTON 30M



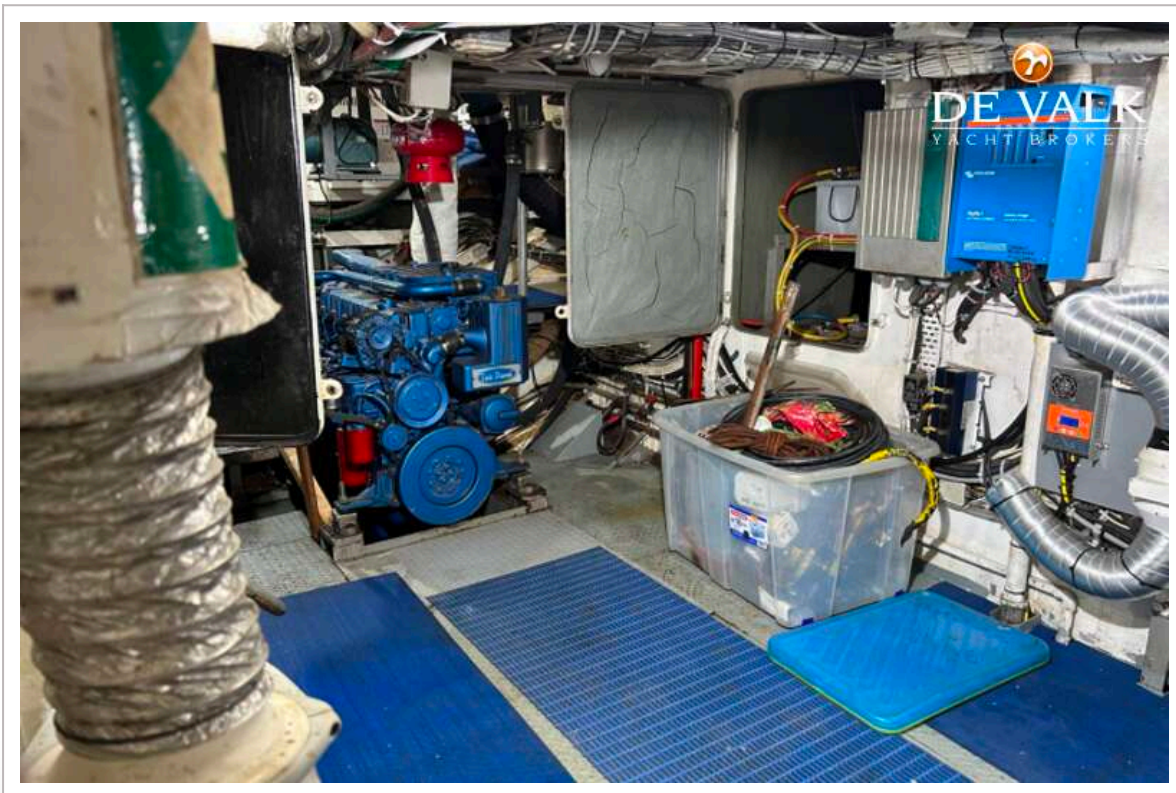
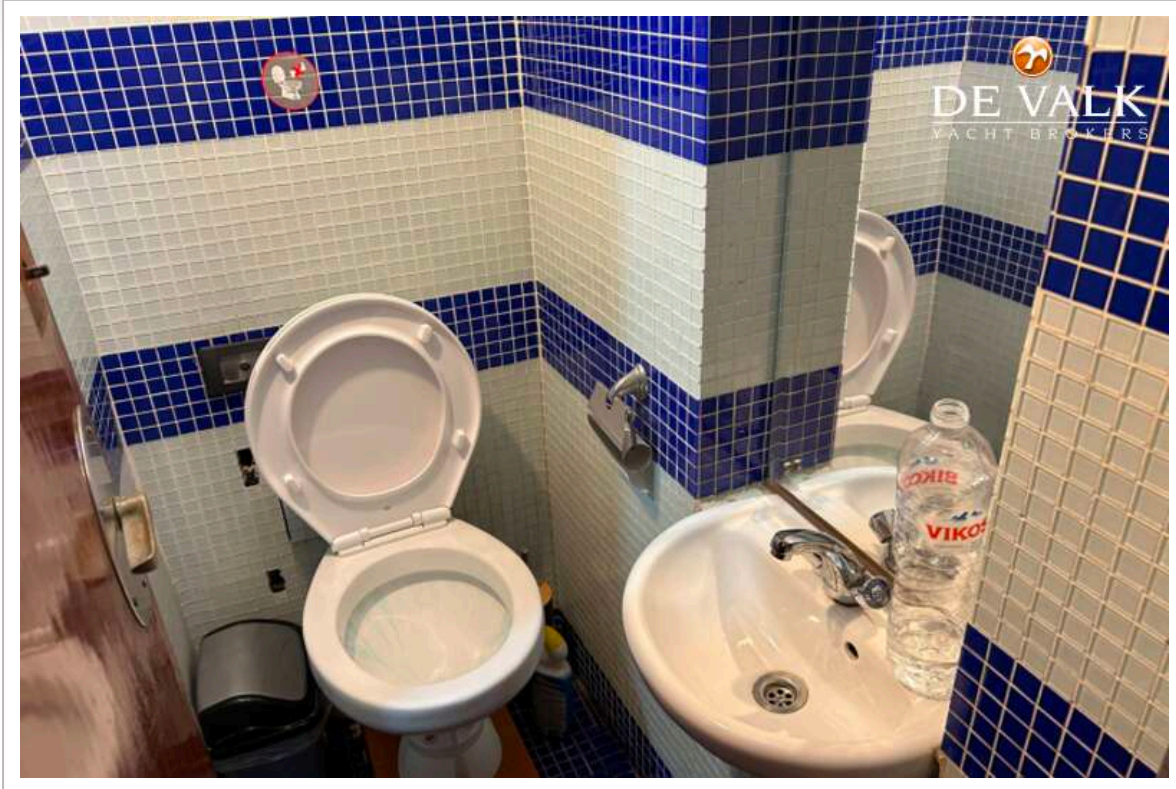
# BELIARD CRIGHTON 30M



# BELIARD CRIGHTON 30M



# BELIARD CRIGHTON 30M



# BELIARD CRIGHTON 30M

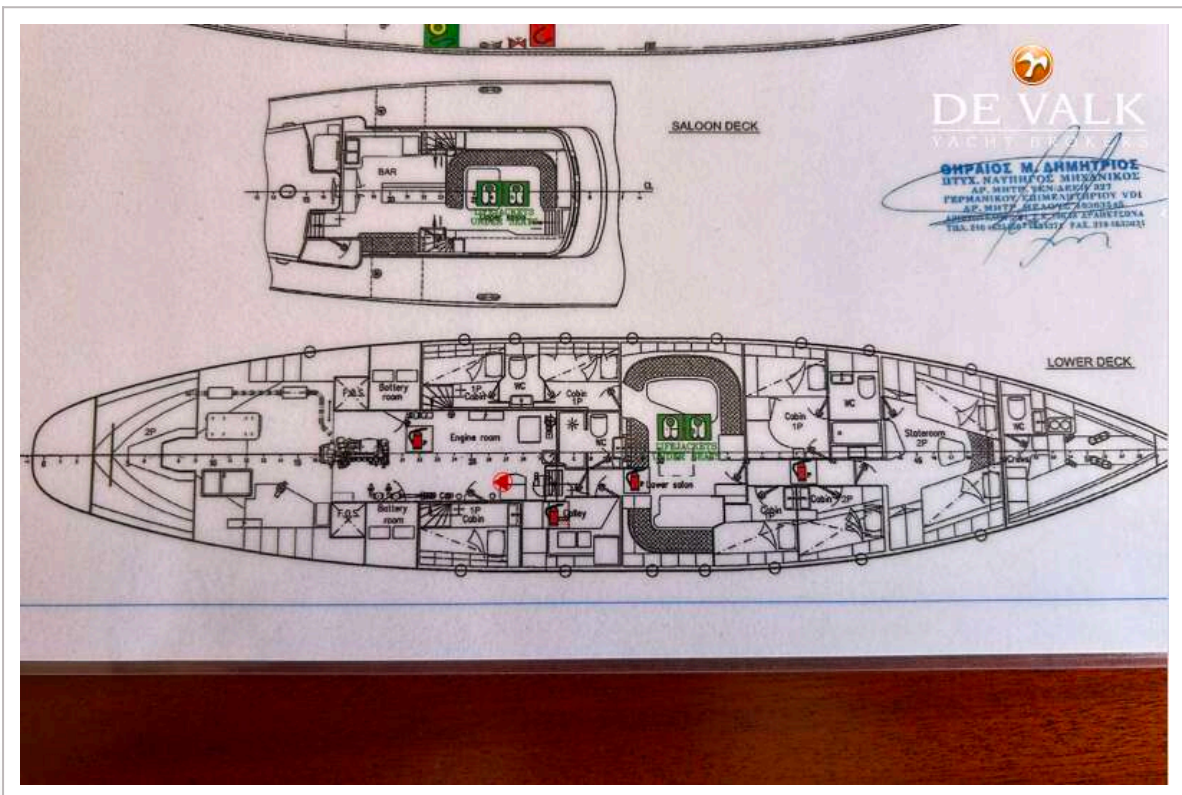
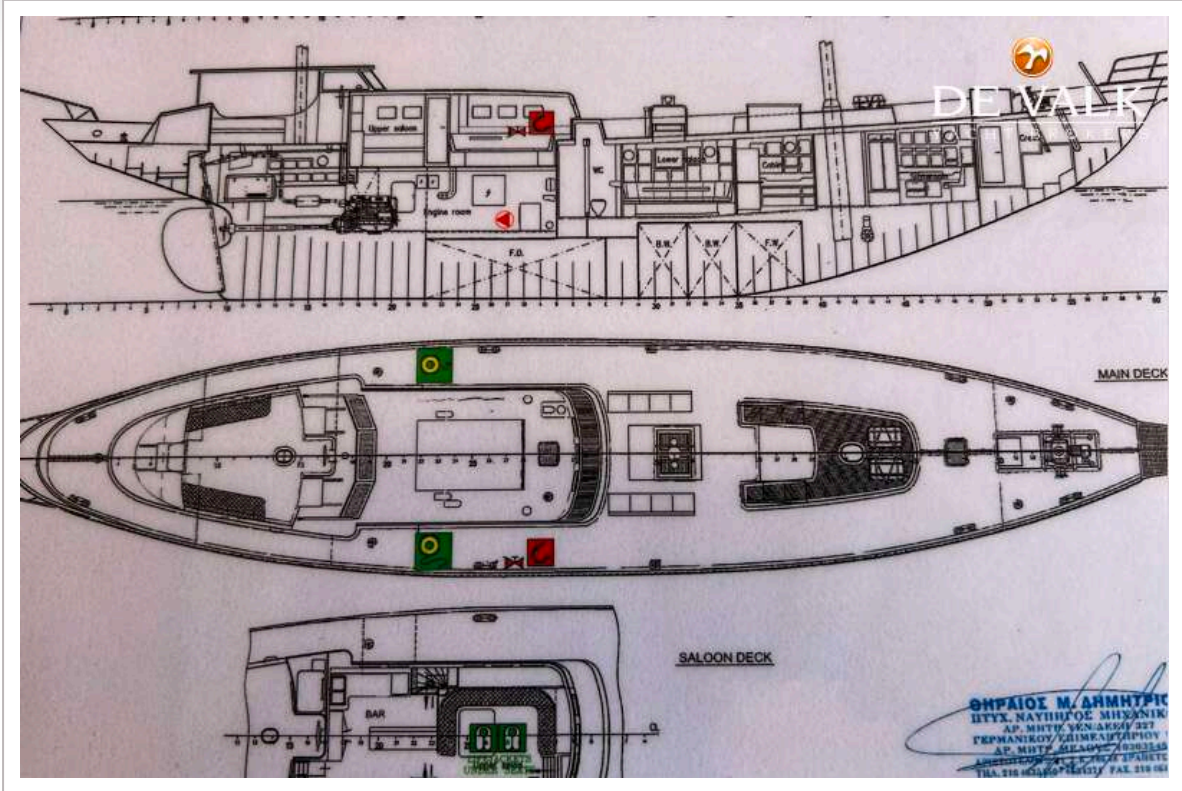


# BELIARD CRIGHTON 30M

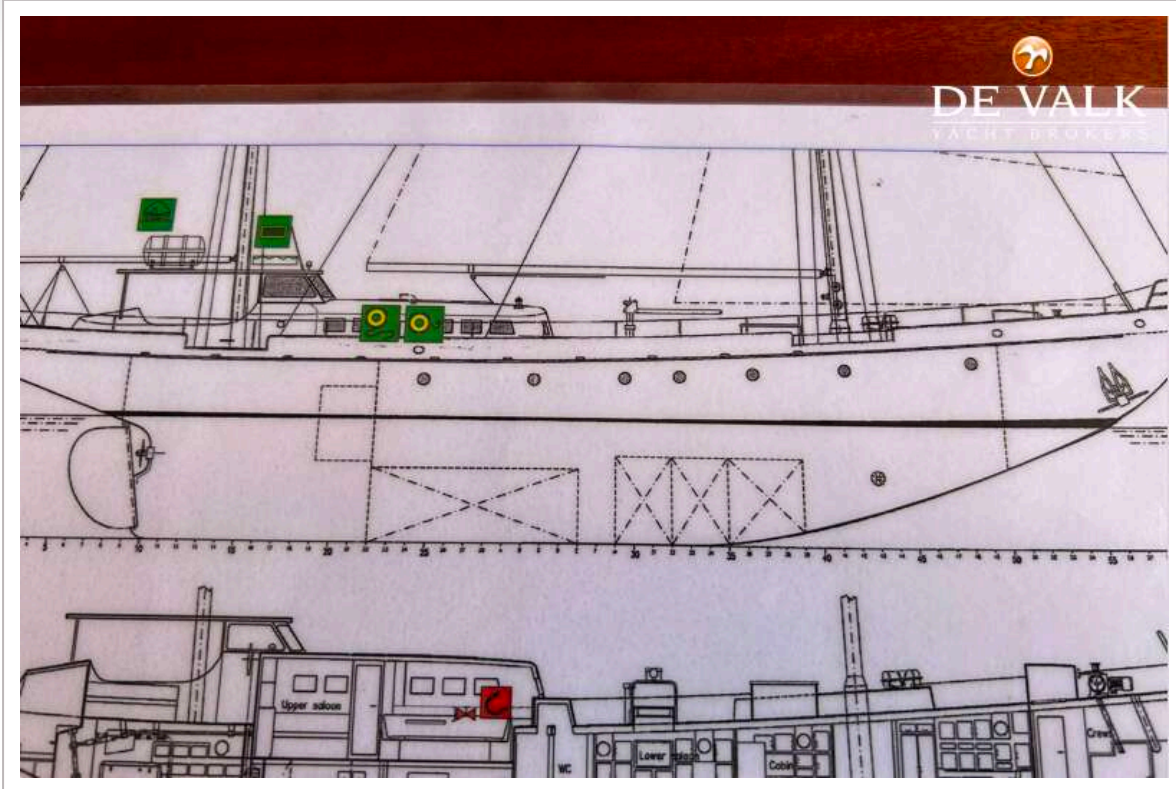




# BELIARD CRIGHTON 30M



# BELIARD CRIGHTON 30M



L.(max)..... 30,27 M  
 L.O.A..... 28,19 M  
 L.B.P..... 23,10 M  
 L.(LL)..... 23,90 M  
 L.W.L..... 23,10 M  
 BREADTH (max)..... 5,88 M  
 BREADTH (Hull)..... 5,66 M  
 DEPTH (mld)..... 4,09 M  
 DRAFT (mld)..... 3,03 M  
 F.S..... 0,40 M



**DE VALK**  
YACHT BROKERS



**SHIP INVESTIGATION Co.**  
D. THIRAIOS - A. DELIDIMITRIS - M. MANIOS

21 ARISTOTELOUS STR, PIRAEUS - TEL: 210.4639150 / 210.4634371 - FAX: 210.4633031 - www.shipinvestigation.gr

NAME OF SHIP : TOSCANA II			
TYPE OF SHIP : E/T -T/P (PROFESSIONAL TOURISTIC)			
DESIGNATION : FIRE & SAFETY PLAN			
DWG No. :	IST07		
SCALE :	1/75		
A	06/2023	D. THIRAIOS	D. THIRAIOS
REV	DATE	DRWN	APPRVD. REVISION SUBJECT

