



DE VALK
YACHT BROKERS



BAVARIA 36



DE VALK
YACHT BROKERS

BROKER'S COMMENTS

What can you say about a Bavaria 36 that has not been said before? A comfortable cruiser from one of Europe's best known builders, in a popular size category and with a very good price/performance ratio. This example is the two cabin version with only two owners since new. The current owners had planned to take her on a long sailing adventure, but due to personal reasons these plans have changed and they are now looking for a new owner for the 'Zeeuwind'. Please make an appointment with De Valk Zeeland to view this Bavaria 36 in Zeeland.

Nick Lanting

SPECIFICATIONS

| | | | |
|---------------------|------------------------------------|----------------|---------------------------------|
| Dimensions | 11.40 x 3.65 x 1.60 (m) | Builder | Bavaria Yachtbau |
| Built | 2004 | Cabins | 2 |
| Material | GRP | Berths | 6 |
| Engine(s) | 1 x Volvo Penta MD2030-D BT diesel | Hp/Kw | 29.00 (hp), 21.34 (kw) |
| Asking price | sold (VAT) | Lying | elsewhere / Not at sales office |

CONTACT

| | | | |
|---------------------|----------------------------------------------|------------------|------------------------|
| Sales office | De Valk Sint Annaland B.V. | Telephone | +31 (0)166 601 000 |
| Address | Koelhuisweg 4 4697 RM Sint Annaland NL | E-mail | sintannaland@devalk.nl |

DISCLAIMER

These particulars are given in good faith as supplied but cannot be guaranteed.



GENERAL

| | |
|----------------------------|---------------------|
| Model | BAVARIA 36 |
| Type | sailing yacht |
| LOA (m) | 11,40 |
| LWL (m) | 9,39 |
| Beam (m) | 3,65 |
| Draft (m) | 1,60 |
| Air draft (m) | 15,16 |
| Headroom (m) | 1,85 |
| Year built | 2004 |
| Launched | 2005 |
| Builder | Bavaria Yachtbau |
| Country | Germany |
| Designer | J&J Design |
| Displacement (t) | 5,5 |
| Ballast (tonnes) | cast iron 1,6 |
| CE norm | A |
| Hull material | GRP |
| Hull colour | white |
| Hull shape | round-bilged |
| Keel type | fin keel |
| Superstructure material | GRP |
| Rubbing strake | aluminum |
| Deck material | GRP |
| Deck finish | non-skid moulded in |
| Superstructure deck finish | non-skid moulded in |
| Cockpit deck finish | teak |
| Antifouling (year) | 2024/05 |
| Deckhatch | 2 x |
| Portholes | polymer |
| Fuel tank (litre) | polyethylene 150 |



| | |
|------------------------------|-----------------------------------------------------------------|
| Level indicator (fuel tank) | yes |
| Freshwater tank (litre) | polyethylene 2 x 150 |
| Level indicator (freshwater) | yes |
| Blackwater tank (litre) | polyethylene 80 (hoses not connected) |
| Blackwater tank extraction | deck extraction |
| Wheel steering | cable steering |
| Emergency tiller | yes |
| More info on hull | Original gelcoat |
| More info on paintwork | 2024 keel was sanded down, treated with interprotect & primacon |

ACCOMMODATION

| | |
|-----------------------|-----------------------------------------------|
| Cabins | 2 |
| Berths | 6 |
| Interior | mahogany |
| Floor | teak and holly |
| Open cockpit | yes |
| Saloon | yes |
| Headroom saloon (m) | 1,85 |
| Heating | diesel ducted hot air Webasto Evo 3900 (2014) |
| Navigation center | yes |
| Galley | yes |
| Countertop | plastic |
| Sink | stainless steel 2 x |
| Cooker | calor gas 2-burner |
| Oven | Calor gas |
| Fridge | yes |
| Hot water system | 220V + engine |
| Water pressure system | electrical |
| Owners cabin | double bed Forward |
| Bed length (m) | 2,05 x 1,60 |



| | |
|----------------|----------------------|
| Wardrobe | hanging and shelves |
| Bathroom | separate |
| Toilet | In bathroom |
| Toilet system | manual New pump 2023 |
| Wash basin | in the bathroom |
| Guest cabin 1 | double bed Aft |
| Bed length (m) | 1,95 x 1,40 |
| Wardrobe | hanging and shelves |
| Extra info | Gas hoses new 2023 |
| Extra info | Small hidden safe |

MACHINERY

| | |
|-------------------------|------------------------------|
| No of engines | 1 |
| Make | Volvo Penta |
| Type | MD2030-D BT |
| HP | 29 |
| kW | 21.34 |
| Fuel | diesel |
| Year installed | 2004 |
| Maximum speed (kn) | 7 |
| Cruising speed (kn) | 5,5 |
| Engine hours | 1500 |
| Engine cooling system | freshwater heat exchanger |
| Drive | sail-drive |
| Saildrive seal | yes |
| Engine controls | bowden cable New cables 2023 |
| Propeller type | folding |
| Propeller blades | 3 |
| Manual bilge pump | yes |
| Electric bilge pump | yes |
| Electrical installation | 12 V & 230 V |



| | |
|------------------------|------------------------------|
| Batteries | 3 x |
| Start battery | 70 Ah (2024) + reserve 50 Ah |
| Service battery | 140 Ah (2024) |
| Battery monitor | yes |
| Battery charger | Mastervolt 3 A |
| Shorepower | with cable |

NAVIGATION

| | |
|----------------------------|------------------------------------------|
| Compass | Plastimo |
| Depth sounder/log | Raymarine ST60 TriData |
| Windset | Raymarine ST60 Wind |
| VHF | Simrad RS81 |
| VHF handheld | Icom GPS IC-M91D |
| Plotter/GPS | Raymarine RC435i (black spot in display) |
| Weather receiver | Weather station |
| Electronic chart(s) | 1 x |
| Navigation lights | yes |

EQUIPMENT

| | |
|-----------------------------------|--------------------|
| Sprayhood | yes |
| Cockpit cushions | Universal cushions |
| Cockpit table | Teak removable |
| Bathing platform | yes |
| Boarding ladder | stainless steel |
| Deck shower | yes |
| Anchor | CQR Plough |
| Sea railing | wire |
| Grab rail (superstructure) | stainless steel |
| Pushpit | yes |
| Pulpit | yes |
| Life raft | valise (or bag) |



| | |
|----------------------|------------|
| Life raft (pers) | 6 |
| Lifebuoy | yes |
| Safety lines on deck | yes |
| Radar reflector | yes |
| Fenders | yes |
| Mooring lines | yes |
| Radio-cd player | yes |
| Speakers in salon | 2 x |
| Fire extinguisher | 2 x (2023) |

RIGGING

| | |
|-------------------------|--------------------------------------------|
| Rigging | sloop |
| Standing rigging | wire 2004 |
| Brand mast | Seldén |
| Material mast | aluminium |
| Spreaders | 2 x 2 |
| Mainsail | Elvstrom (2004) |
| Mainsail cover | yes |
| Fully battened mainsail | yes |
| Jib | 26 m2 (2004) |
| Genoa | 36 m2 |
| Genoa furler | yes |
| Genoa cover | yes |
| Reefing System | quick-one-line-reefing |
| Backstay adjuster | tackle |
| Boomvang | gasspring Seldén |
| Primary sheet winch | 2 x Harken 16 1 Speed, serviced 2023 |
| Multifunctional winches | 2 x Harken 40 2 Speed, serviced 2023 |
| Extra info | Winches fixed with anti-theft locking nuts |





BAVARIA 36



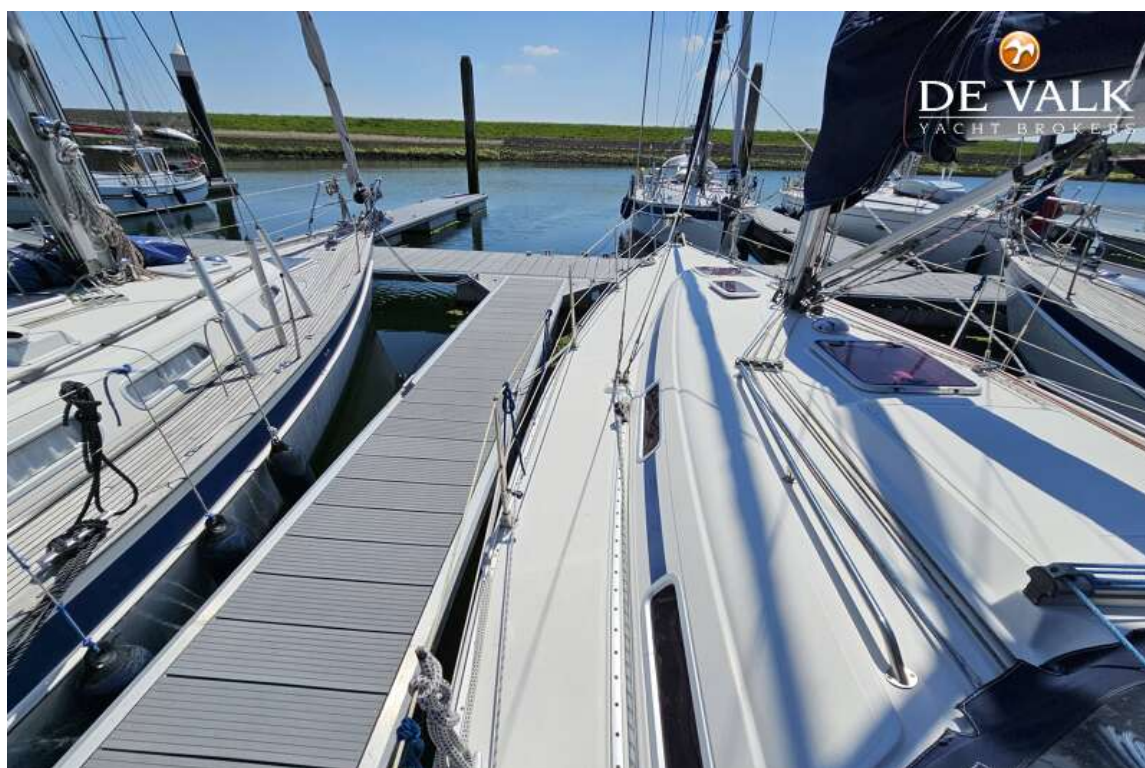
BAVARIA 36







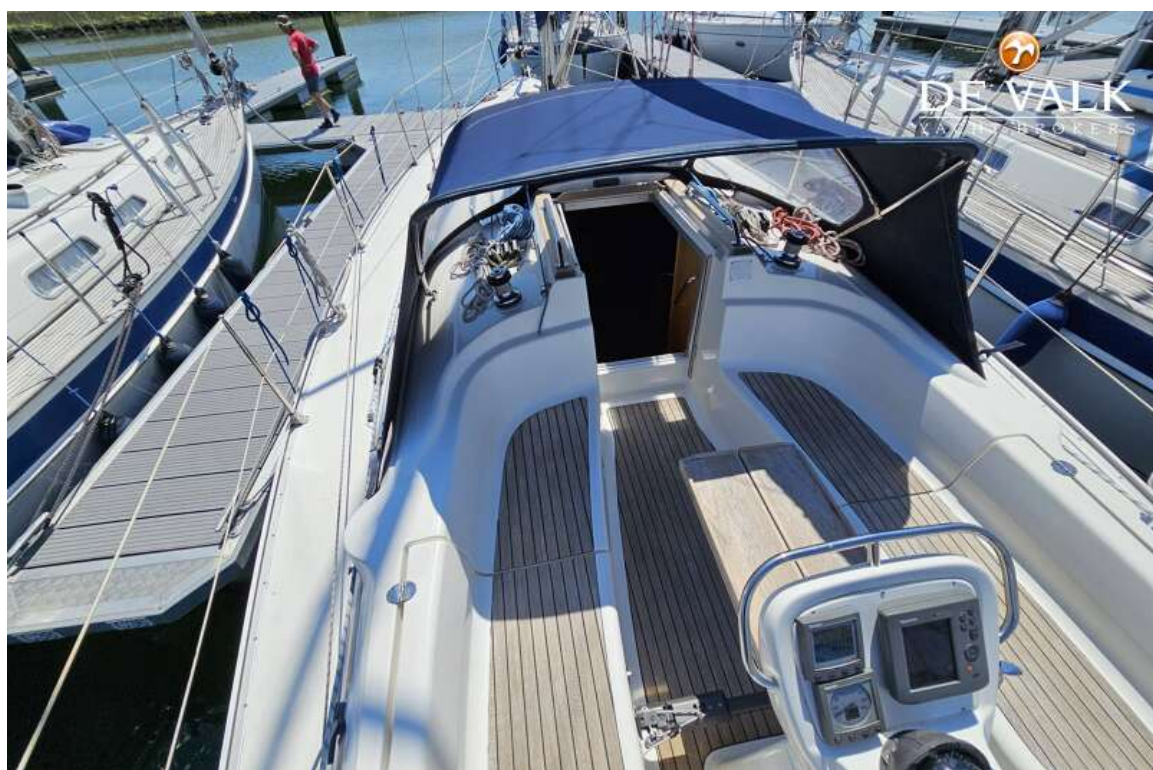
BAVARIA 36



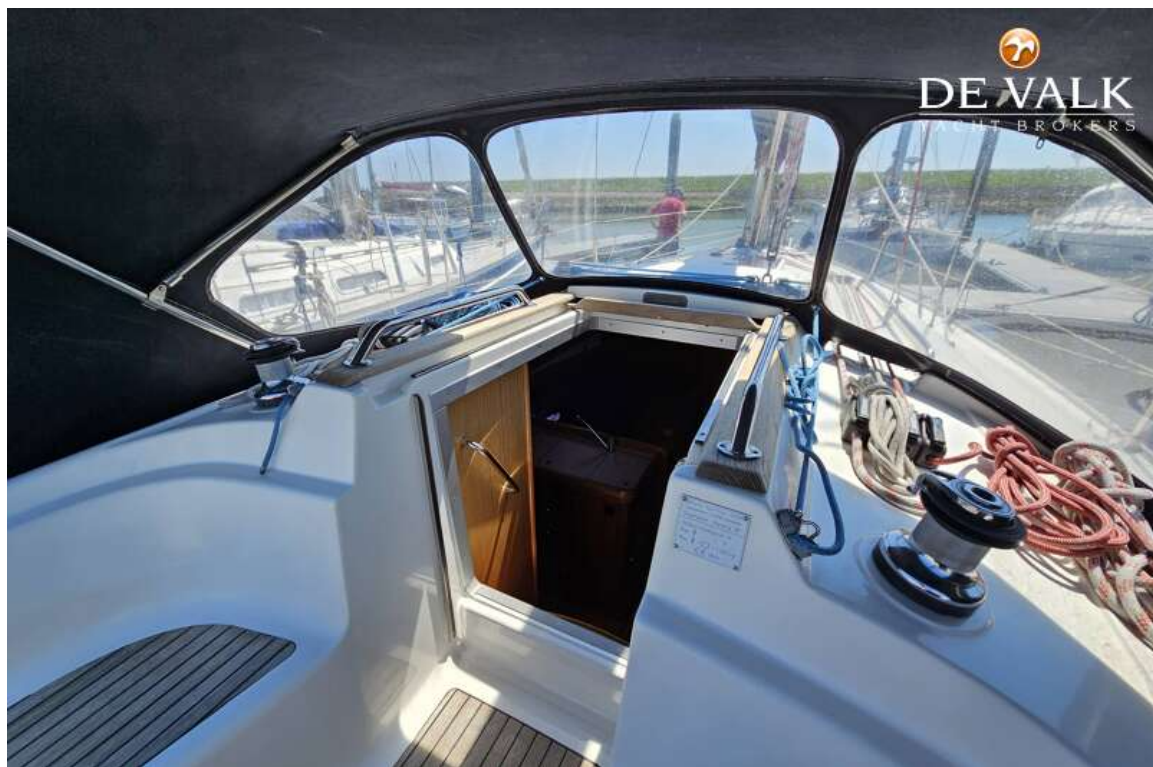
BAVARIA 36



BAVARIA 36



BAVARIA 36



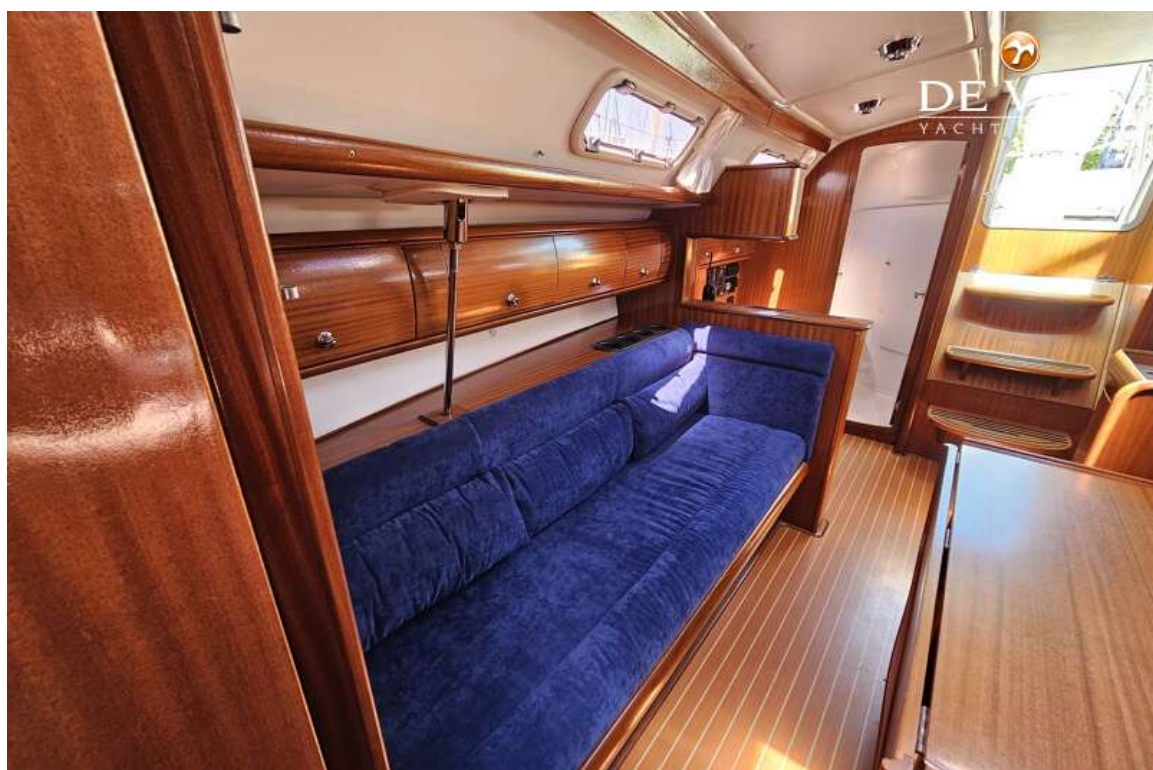
BAVARIA 36



BAVARIA 36



BAVARIA 36



BAVARIA 36



BAVARIA 36



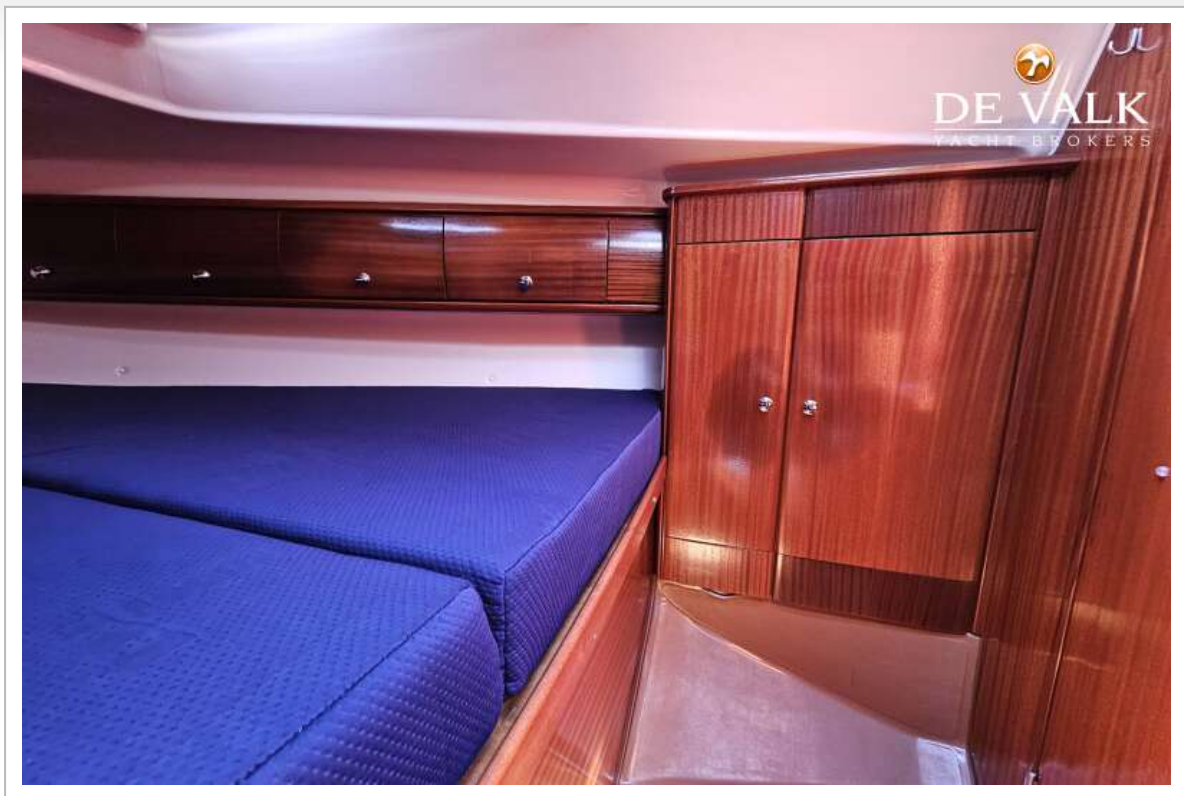
BAVARIA 36



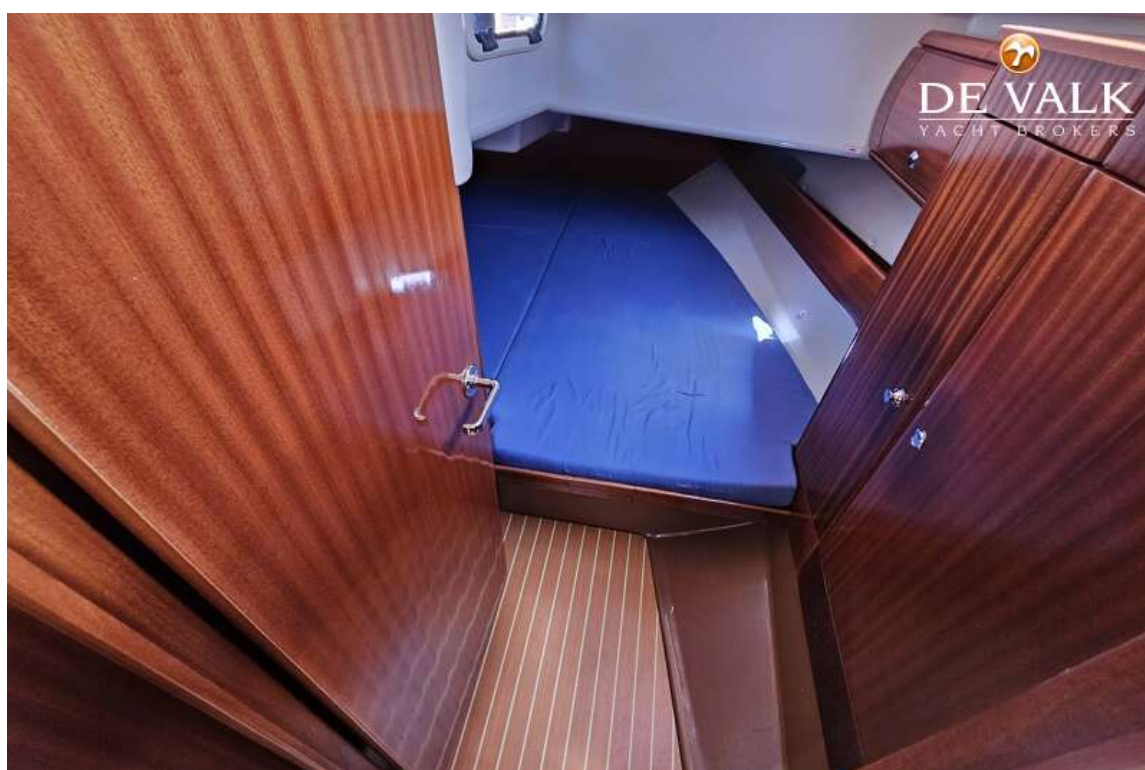
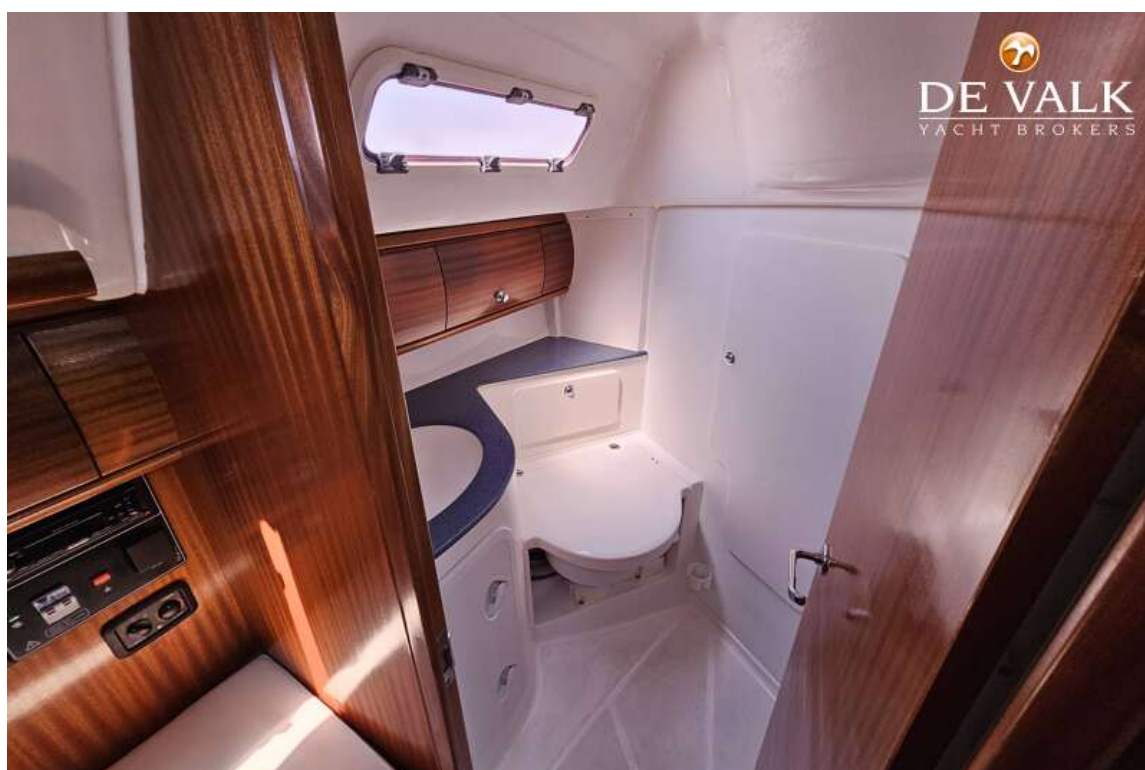
BAVARIA 36



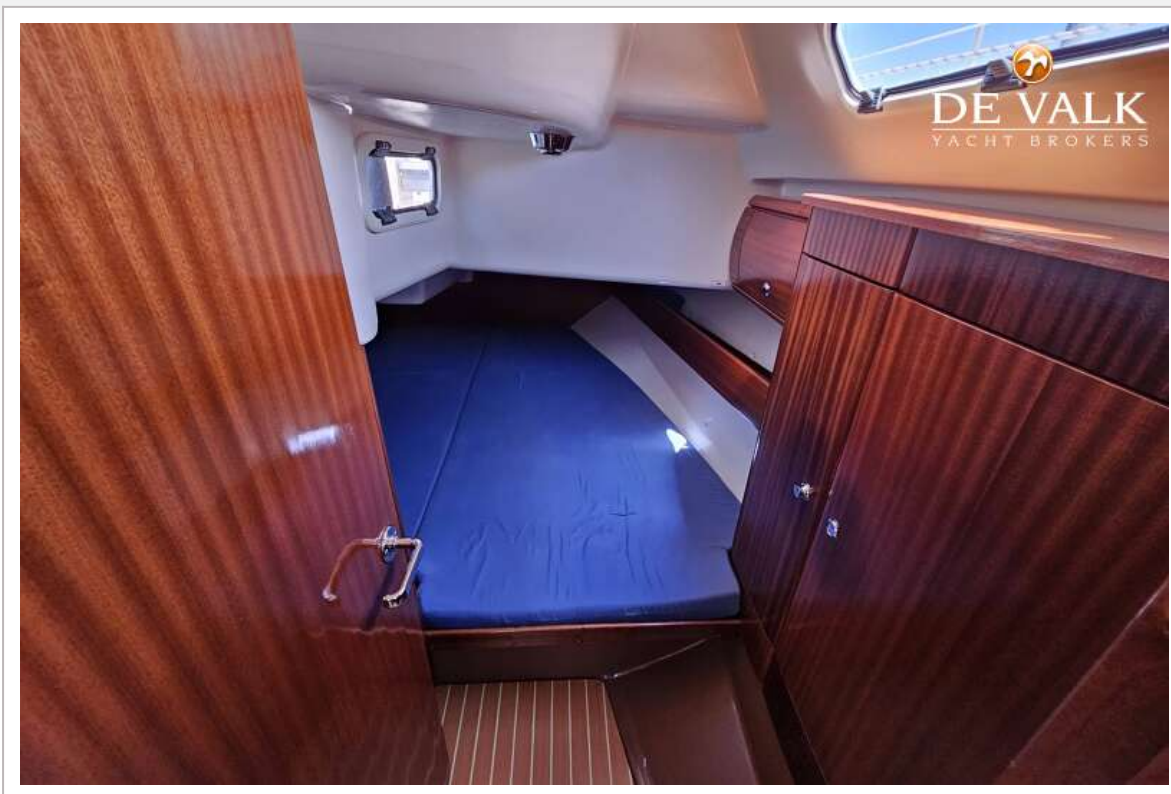
BAVARIA 36



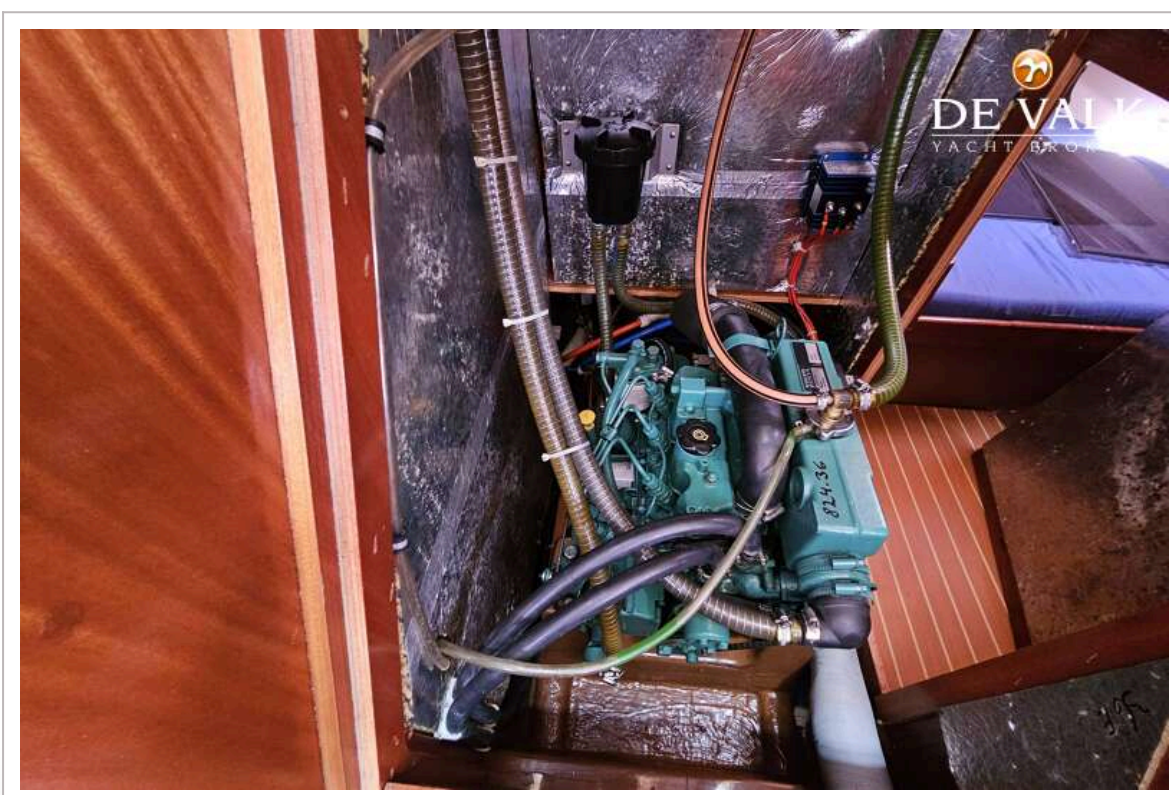
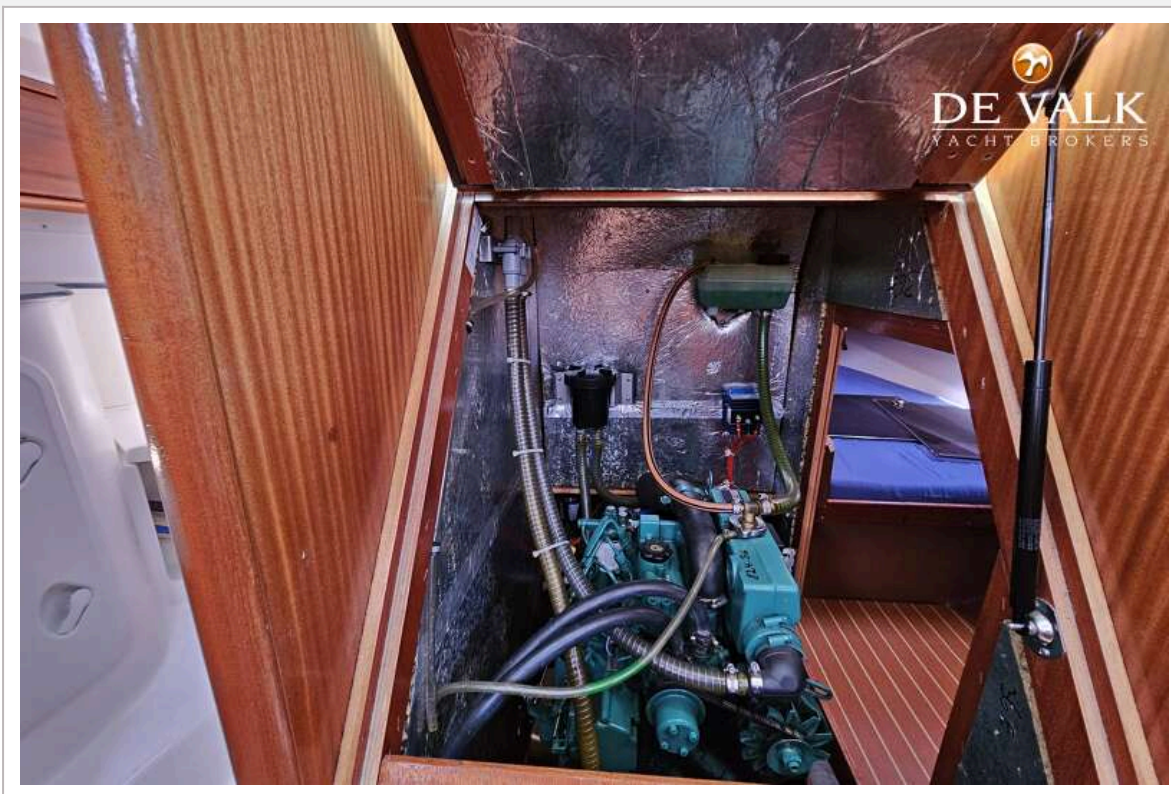
BAVARIA 36



BAVARIA 36



BAVARIA 36



BAVARIA 36

