



DE VALK
YACHT BROKERS

OCEAN ALEXANDER 420 SPORT SEDAN



DE VALK
YACHT BROKERS

OCEAN ALEXANDER 420 SPORT SEDAN

BROKER'S COMMENTS

One of Alexander's most popular models, the 42 Sedan is a well-proportioned family cruiser with a spacious interior layout. Like most Ocean Alexander designs, the 42 was built on a weight-efficient modified-V hull with moderate beam, a shallow keel and cored hullsides. The large cockpit provides a great deal of open-air entertaining space for family and guests. Most importantly for a yacht of this age, her engines have been meticulously maintained by the owner (who is a mechanic!). Survey available from 2023.

Zoë Ann Clark

SPECIFICATIONS

Dimensions	14.00 x 4.40 x 1.00 (m)	Builder	Ocean Marine Company LTD
Built	1988	Cabins	2
Material	GRP	Berths	4
Engine(s)	2 x Volvo Penta TAMD 71 A diesel	Hp/Kw	2 x 358.00 (hp), 263.49 (kw)
Asking price	sold (VAT)	Lying	at sales office

CONTACT

Sales office	De Valk Almeria	Telephone	+34 950 497 825
Address	Puerto de Almerimar Darsena de la Batea Almerimar ES	E-mail	almeria@devalk.nl

DISCLAIMER

These particulars are given in good faith as supplied but cannot be guaranteed.



OCEAN ALEXANDER 420 SPORT SEDAN

GENERAL

Model	OCEAN ALEXANDER 420 SPORT SEDAN
Type	motor yacht
LOA (m)	14,00
Beam (m)	4,40
Draft (m)	1,00
Air draft (m)	3,51
Headroom (m)	1,95
Year built	1988
Builder	Ocean Marine Company LTD
Country	Taiwan
Designer	Ocean Alexander
Displacement (t)	10,4
CE norm	NA
Hull material	GRP
Hull colour	white
Hull shape	V-shaped hull
Superstructure material	GRP
Deck material	GRP
Deck finish	non-skid moulded in
Superstructure deck finish	non-skid moulded in
Cockpit deck finish	teak
Antifouling (year)	2023
Window frame	aluminium
Window material	glass
Deckhatch	yes
Portholes	stainless steel All new latches 2024
Insulation	yes
Flybridge	yes
Flybridge cover	yes
Flybridge suncover	yes



OCEAN ALEXANDER 420 SPORT SEDAN

Radar arch	non collapsible
Fuel tank (litre)	aluminium 568
Fuel tank 2 (litre)	aluminium 568
Level indicator (fuel tank)	yes
Freshwater tank (litre)	polyethylene 568
Blackwater tank (litre)	Disconnected
Blackwater tank extraction	deck extraction + pump
Wheel steering	hydraulic
Inside helm position	yes
Flybridge helm position	hydraulic
More info on hull	yes

ACCOMMODATION

Cabins	2
Berths	4
Interior	teak
Layout	2 Cabins
Floor	parquet
Aft deck	yes
Saloon	yes
Headroom saloon (m)	1,95m
Heating	diesel ducted hot air Eberspacher
Navigation center	yes
Dinette	yes
Sliding door to cockpit	yes
Galley	yes
Countertop	plastic
Sink	stainless steel Twin
Cooker	calor gas
Oven	yes
Extractor	yes



OCEAN ALEXANDER 420 SPORT SEDAN

Microwave/oven combi	yes
Fridge	2 (Electrolux & Waeco Coolmatic)
Hot water system	220V + engine
Water pressure system	electrical
Manual and/or foot pump	yes
Kettle	yes
Crockery	yes
Owners cabin	double bed
Bed length (m)	1,90
Wardrobe	hanging/drawers/shelves
Bathroom	separate
Toilet	separate
Toilet system	vacuum
Wash basin	in the bathroom
Shower	shared
Guest cabin 1	twin single
Bed length (m)	1,90
Wardrobe	hanging/drawers/shelves

MACHINERY

No of engines	2
Make	Volvo Penta
Type	TAMD 71 A
HP	358
kW	263.49
Fuel	diesel
Year installed	1988
Year of overhaul	Consistently maintained by the owner who is a mechanic
Maximum speed (kn)	20
Cruising speed (kn)	12
Consumption (l/hr)	27



OCEAN ALEXANDER 420 SPORT SEDAN

Engine hours	1700 1800
Engine cooling system	freshwater heat exchanger
Drive	shaft
Shaft seal	yes
Engine controls	bowden cable
Gearbox	hydraulic
Exhaust	watercooled New stainless and all new tubes on both exhaust systems.
Propeller type	fixed
Propeller blades	2 x 24" diameter four (4) bladed counter-rotating
Propeller shaft material	stainless steel
Manual bilge pump	yes
Electric bilge pump	Rule 200 electric
Generator	Redundant
Start battery	2 x Energy Car 225i 1200A, 215Ah
Service battery	2 x Energy Car 225i 1200A 215Ah deep cycle batteries
Generator battery	Tuder Heavy TF1853 185Ah deep cycle battery
Battery charger	yes
Shorepower	with cable 230V
Watermaker	Needs commissioning
Trimtabs	yes

NAVIGATION

Compass	yes
Compass on flybridge	yes
Depth sounder	yes
Log	yes
VHF	yes
VHF handheld	yes
Autopilot	Cetrek 721
GPS	Furuno GP-31 GPS / Magellen



OCEAN ALEXANDER 420 SPORT SEDAN

Radar/plotter	Furuno
Navtex	NAV 4 Plus/Foruno Navtex NX300
Navigation lights	yes
Searchlight	yes

EQUIPMENT

Fixed windscreen	yes
Sun awning	yes
Cockpit table	yes
Cockpit chairs	yes
Bathing platform	yes
Boarding ladder	yes
Transom door	yes
Gangway	yes
Deck shower	yes
Anchor	CQR Plough 45lb
Anchor chain	8mm x 40m approx.
Windlass	electrical
Dinghy	inflatable Avon
Outboard	10HP
Davits	stainless steel
Grab rail (superstructure)	stainless steel
Pulpit	yes
Life raft	container
Last life raft survey	Requires servicing
Lifejackets	yes
Horn	yes
Radar reflector	Foruno
Fenders	yes
Mooring lines	yes
Spare parts	yes



OCEAN ALEXANDER 420 SPORT SEDAN

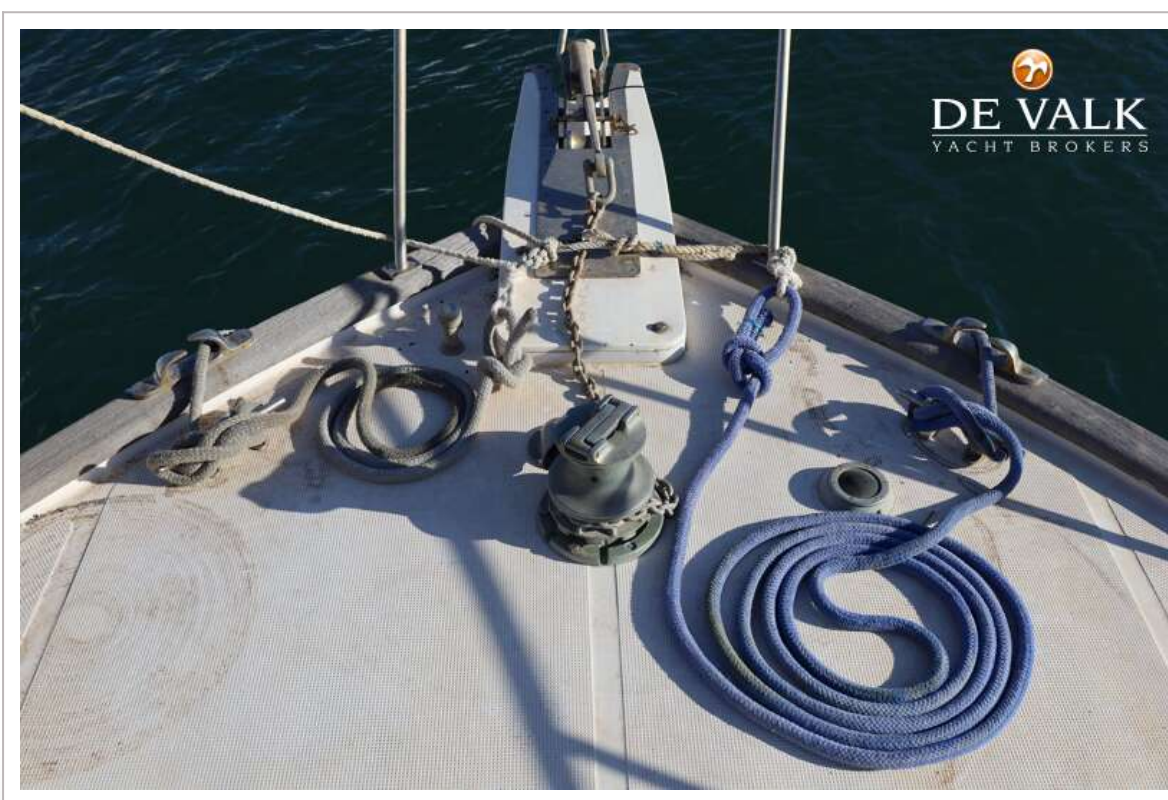
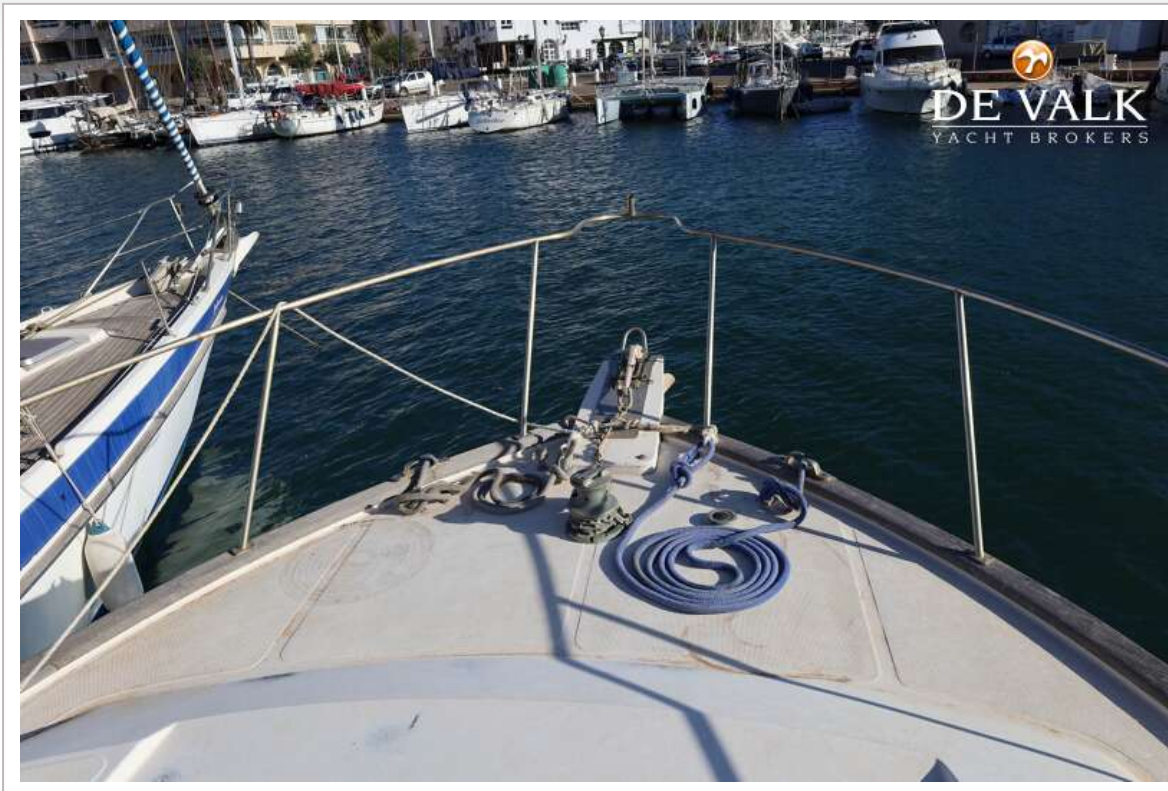
Tools	yes
TV	yes
Surround Sound System	yes
Speakers in salon	yes
Fire extinguisher	yes
Latest extinguisher survey	2024
Extinguisher in engine room	yes



OCEAN ALEXANDER 420 SPORT SEDAN



OCEAN ALEXANDER 420 SPORT SEDAN



OCEAN ALEXANDER 420 SPORT SEDAN



OCEAN ALEXANDER 420 SPORT SEDAN



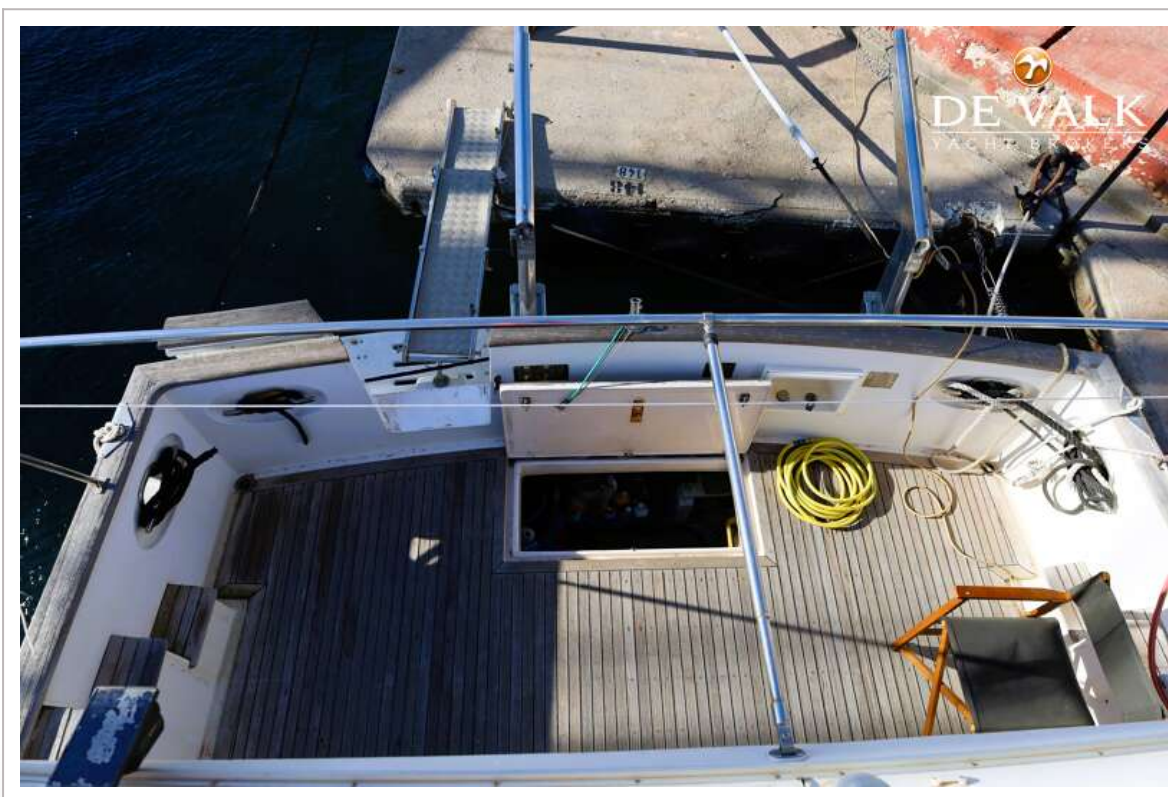
OCEAN ALEXANDER 420 SPORT SEDAN



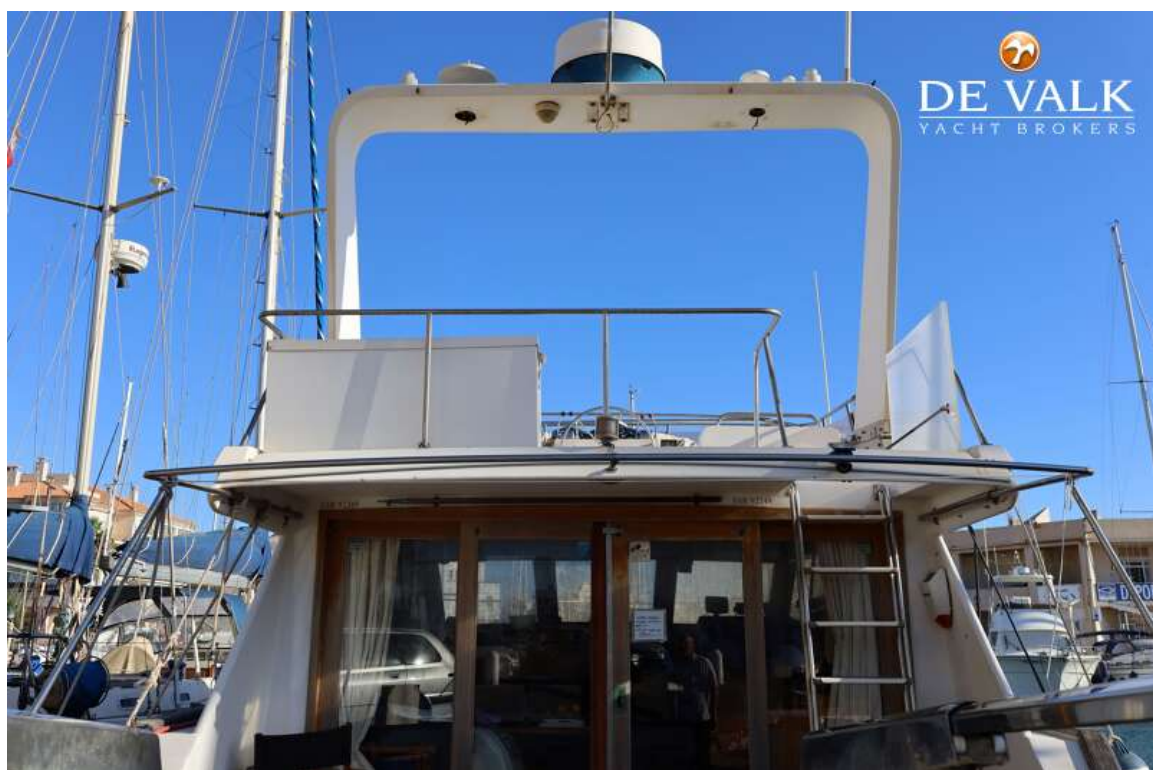
OCEAN ALEXANDER 420 SPORT SEDAN



OCEAN ALEXANDER 420 SPORT SEDAN



OCEAN ALEXANDER 420 SPORT SEDAN



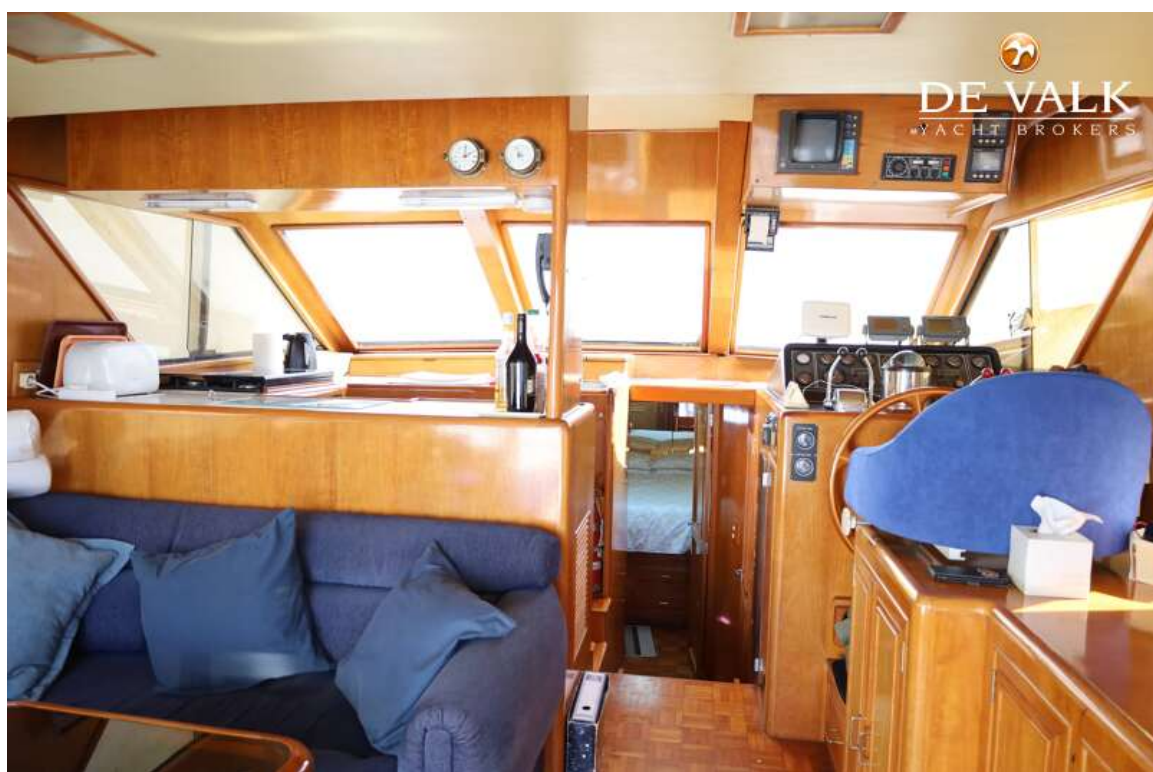
OCEAN ALEXANDER 420 SPORT SEDAN



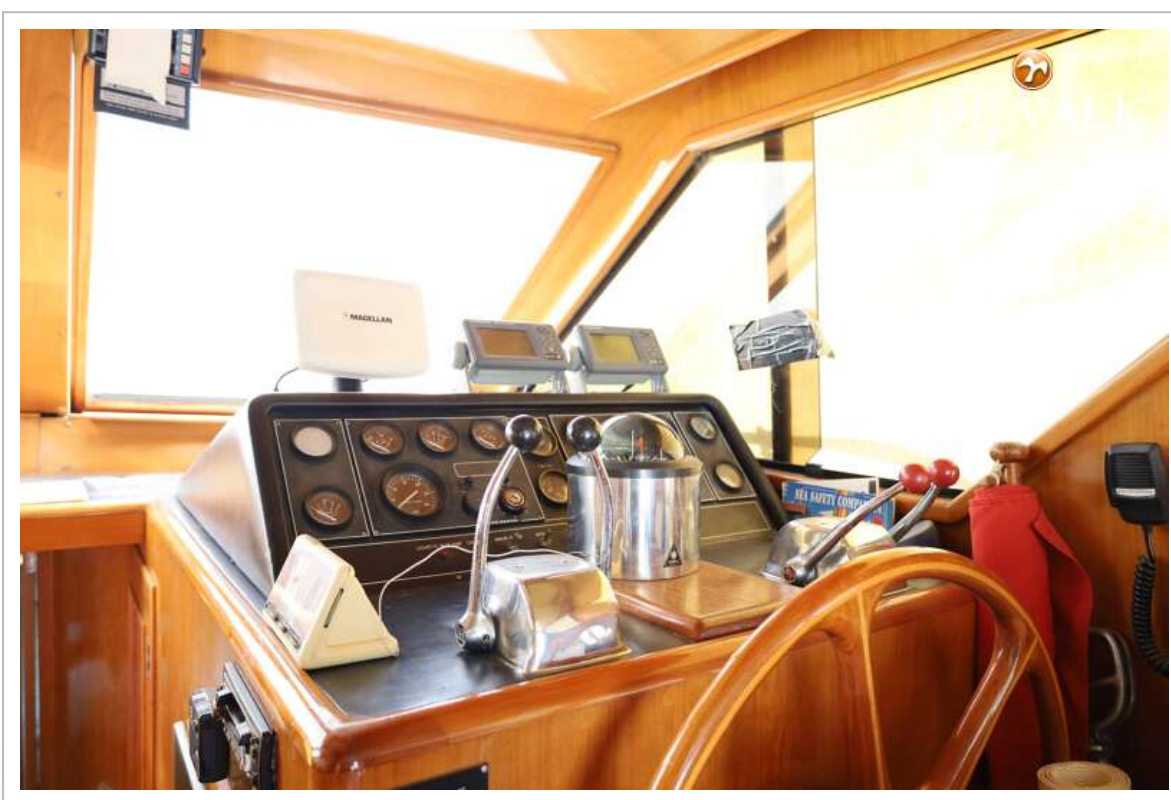
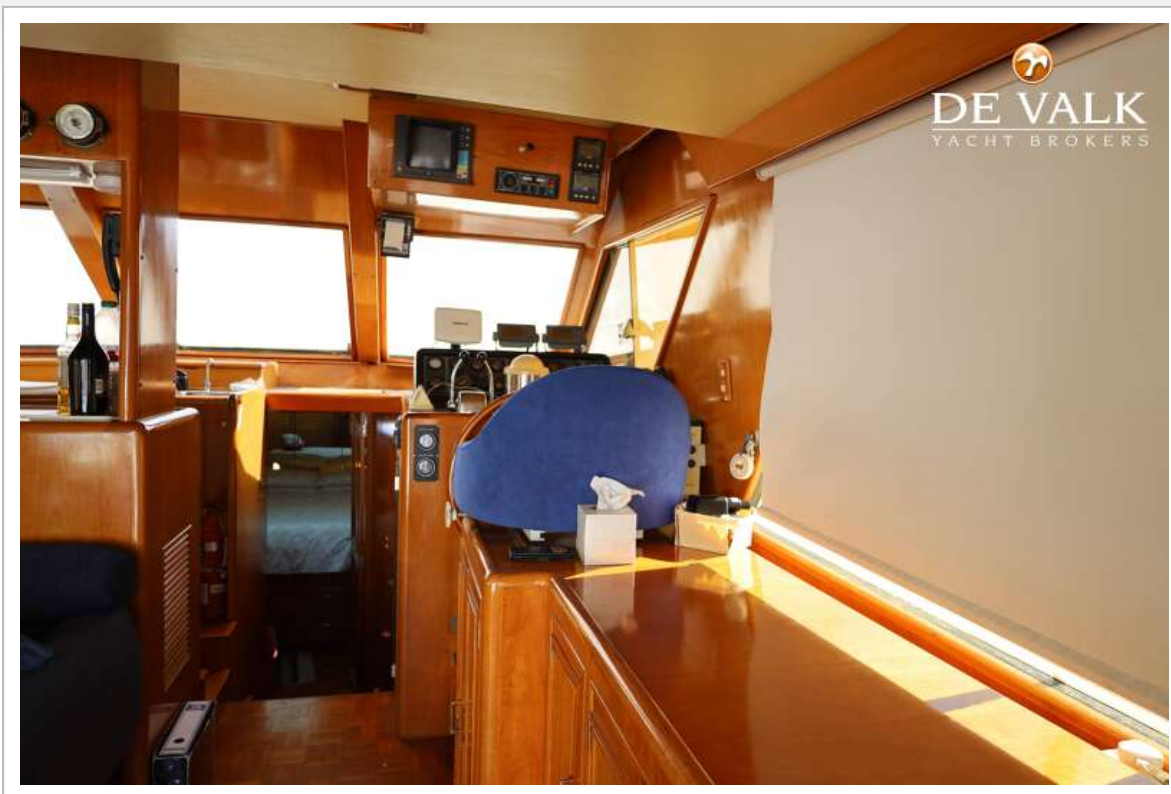
OCEAN ALEXANDER 420 SPORT SEDAN



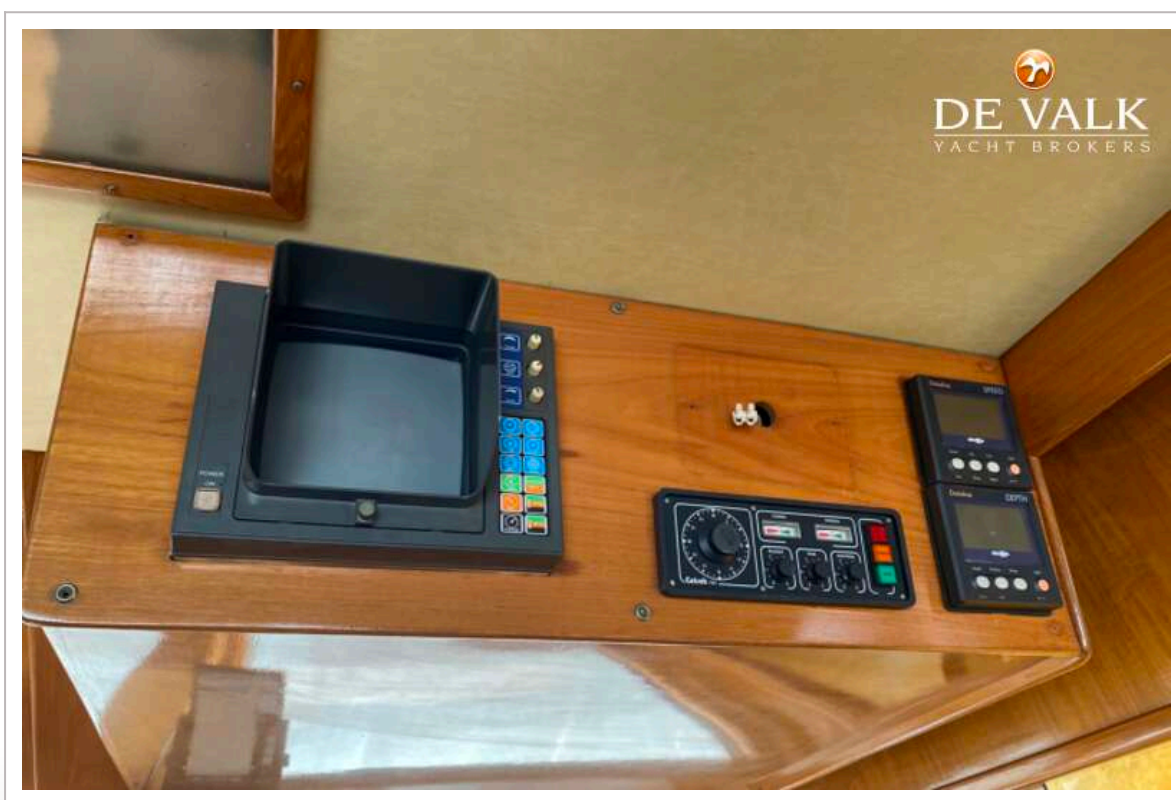
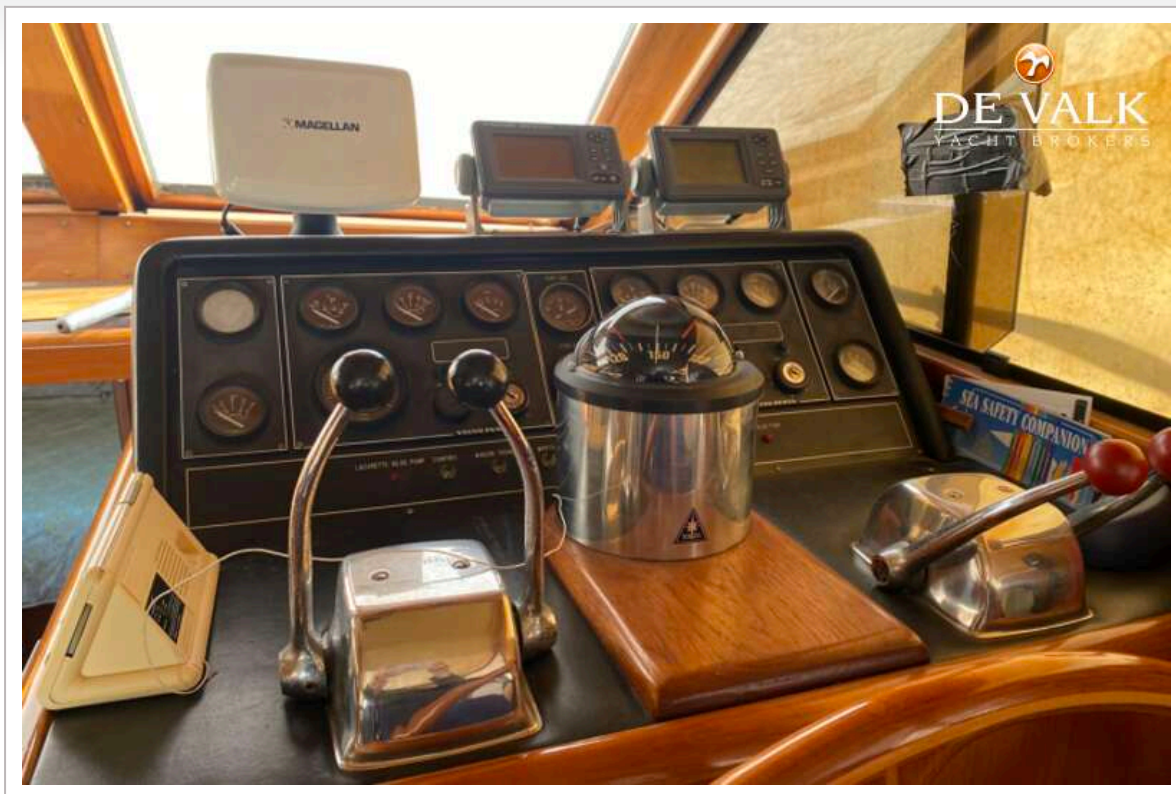
OCEAN ALEXANDER 420 SPORT SEDAN



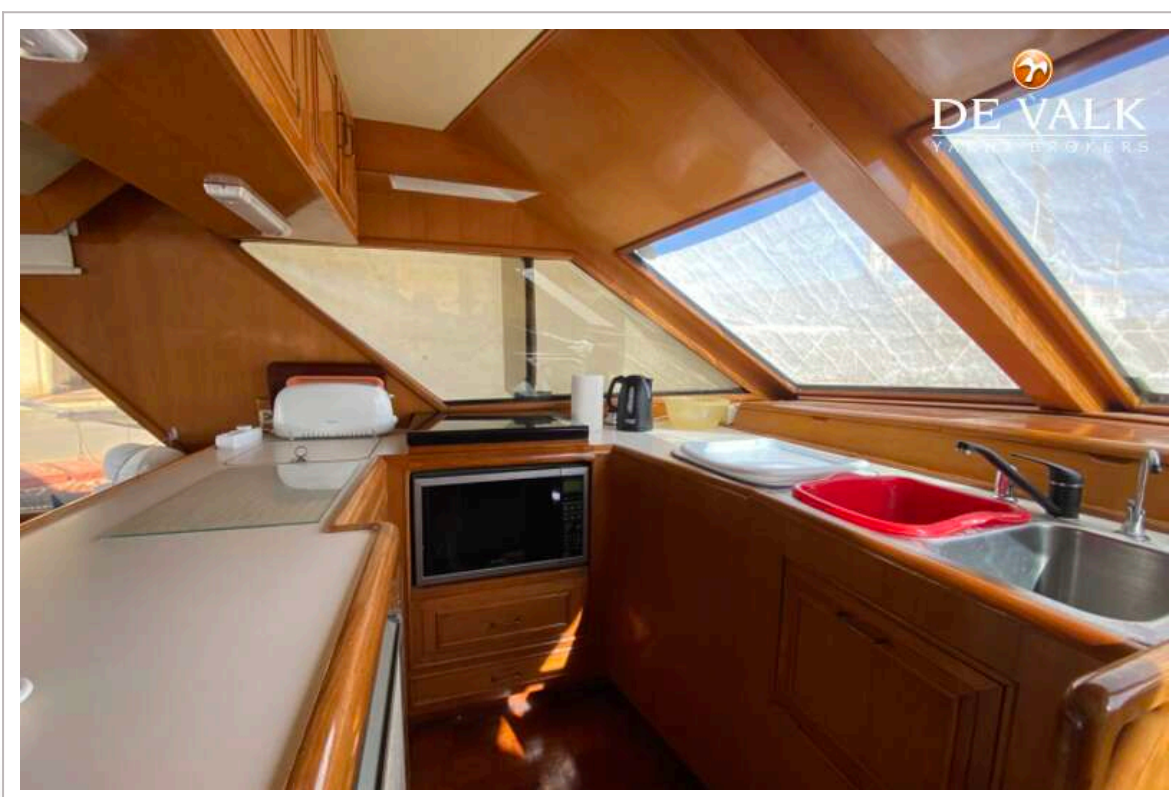
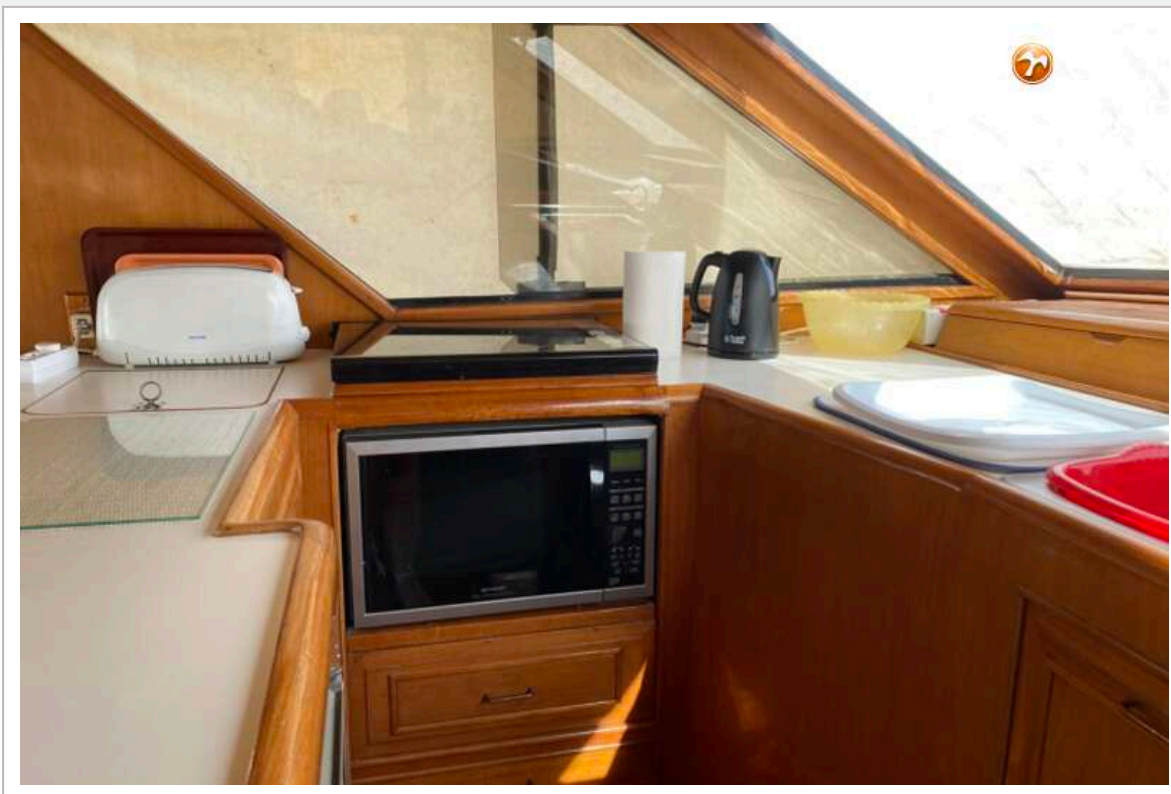
OCEAN ALEXANDER 420 SPORT SEDAN



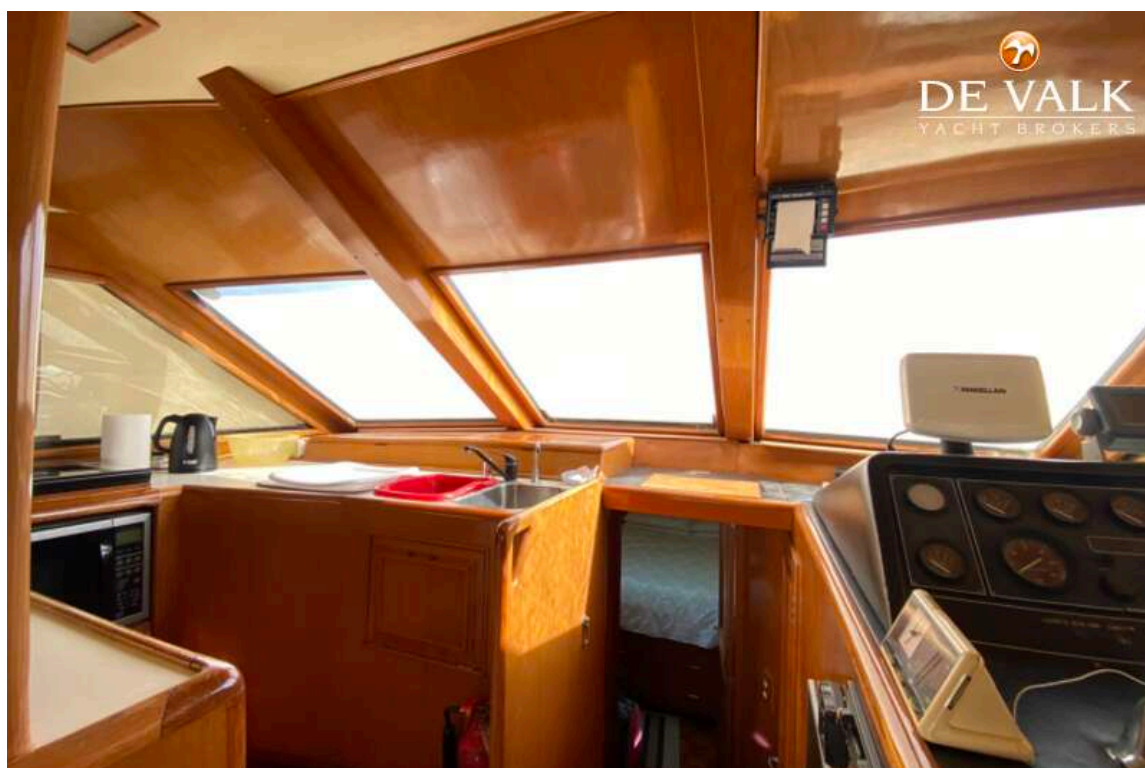
OCEAN ALEXANDER 420 SPORT SEDAN



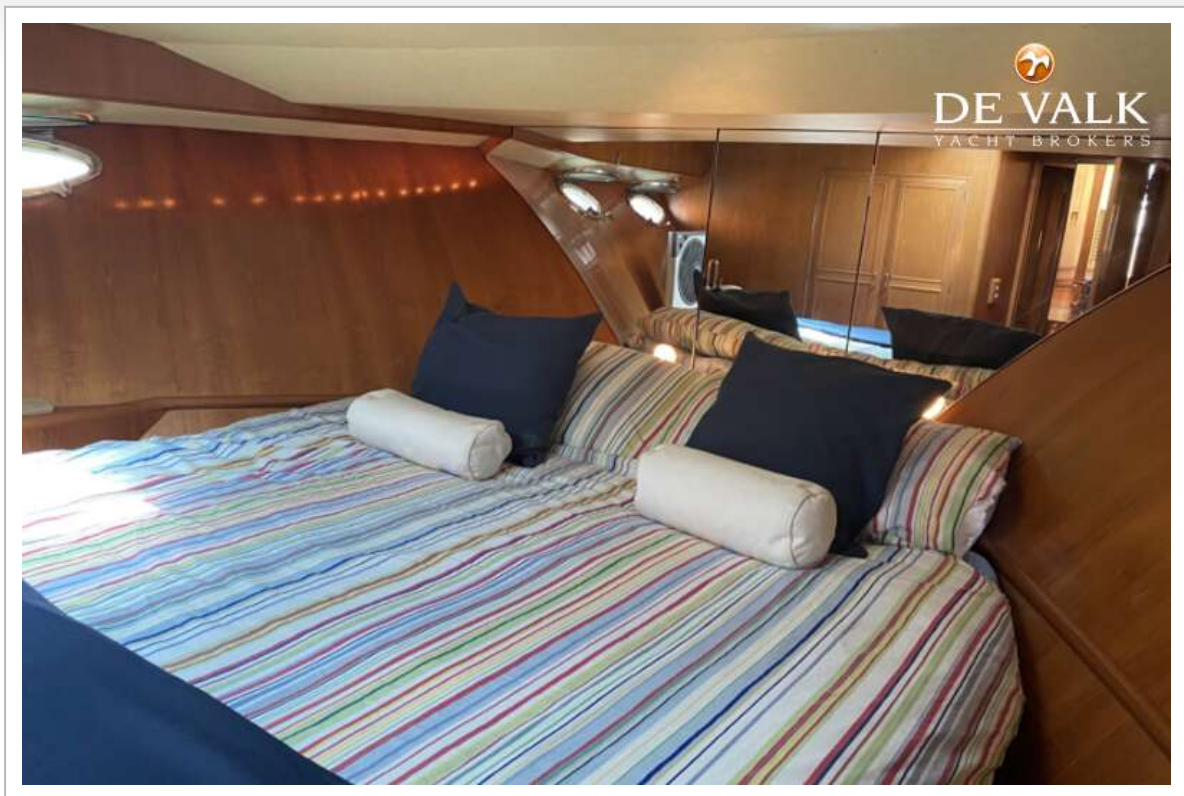
OCEAN ALEXANDER 420 SPORT SEDAN



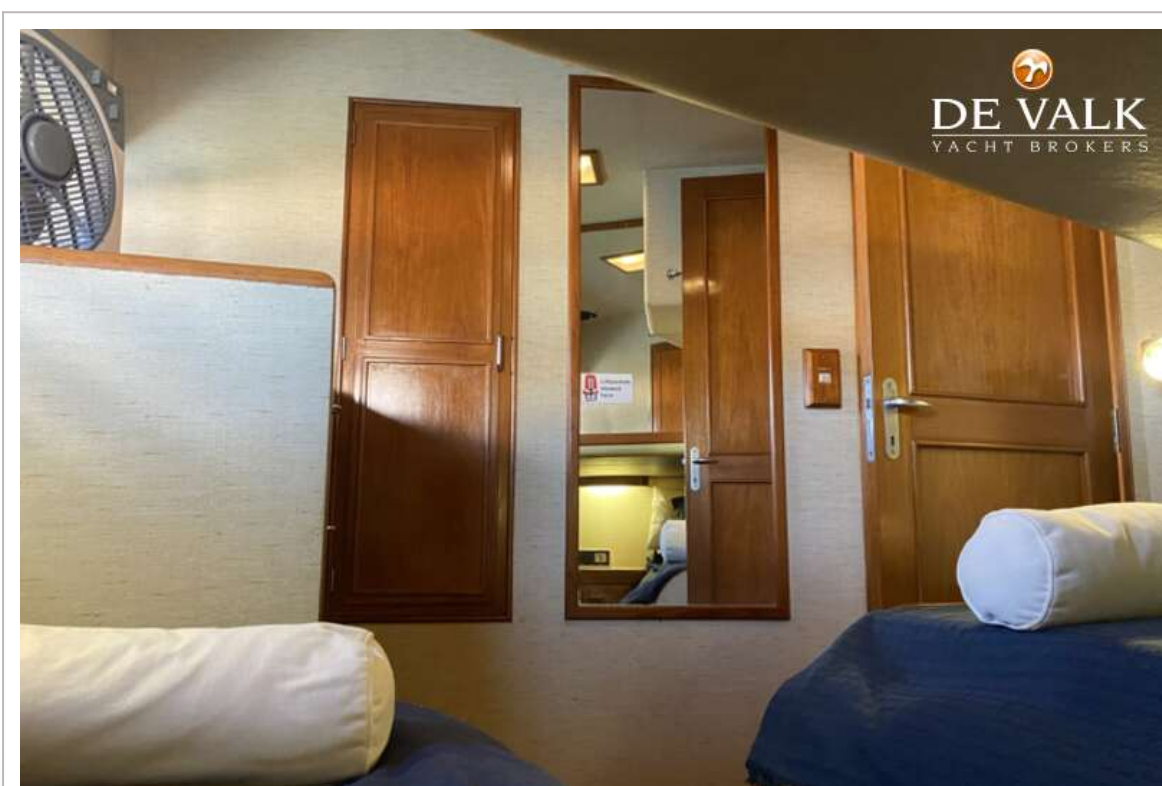
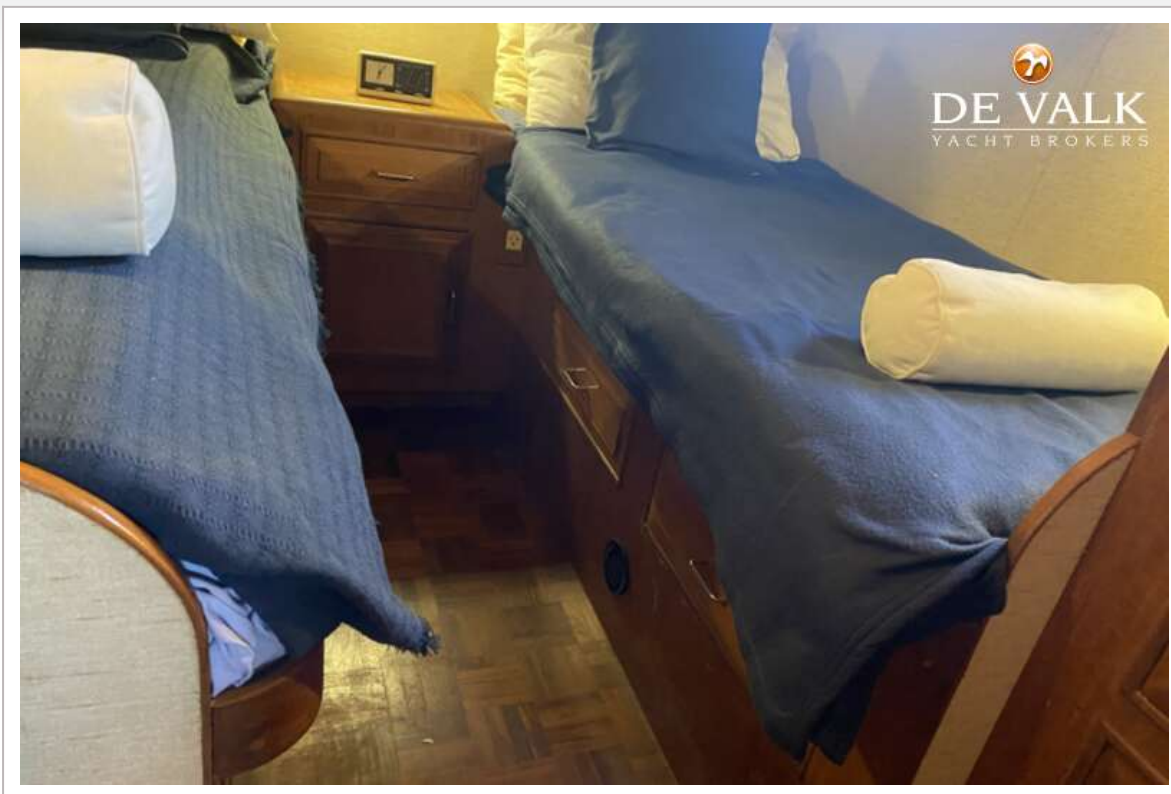
OCEAN ALEXANDER 420 SPORT SEDAN



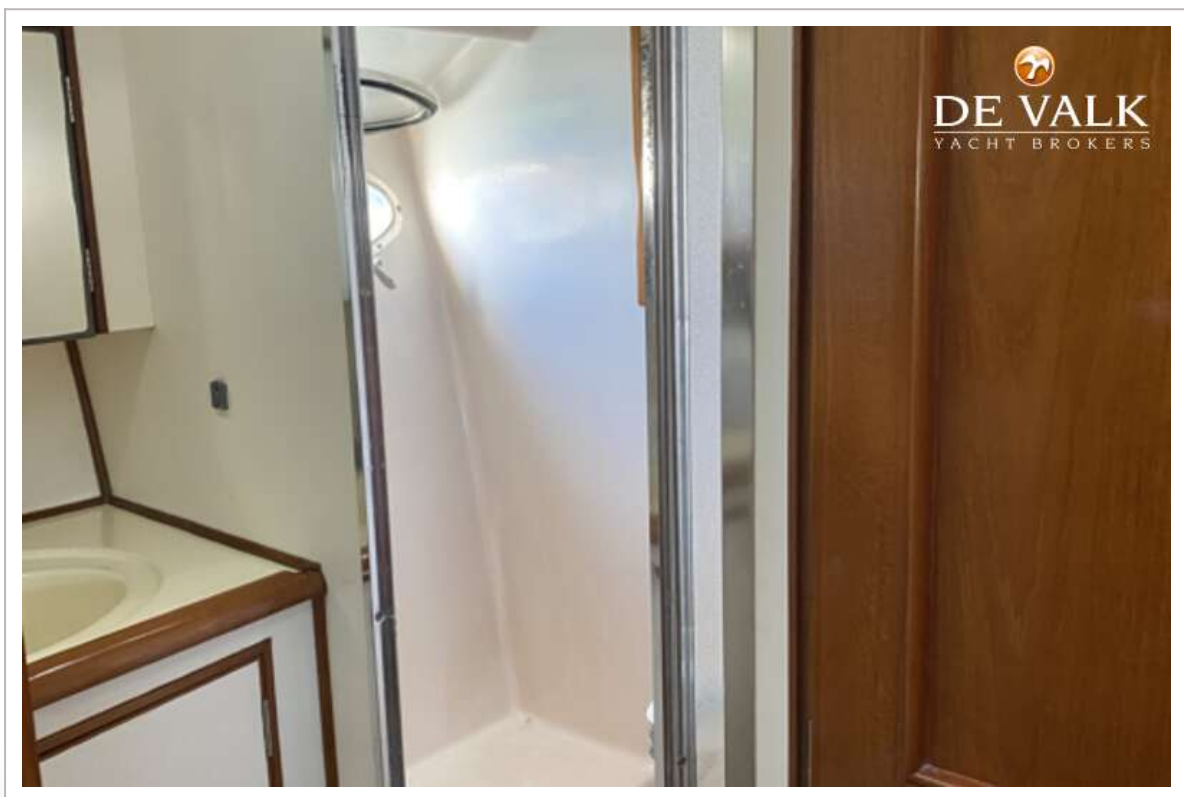
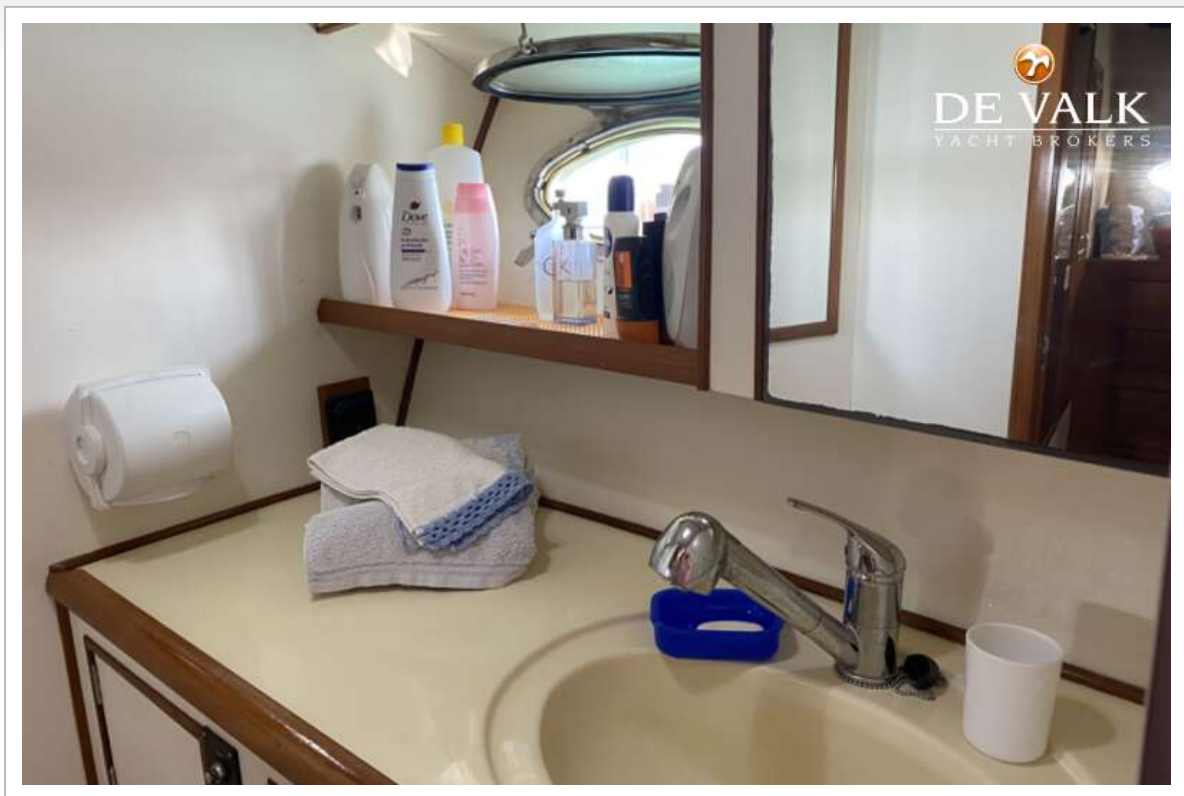
OCEAN ALEXANDER 420 SPORT SEDAN



OCEAN ALEXANDER 420 SPORT SEDAN



OCEAN ALEXANDER 420 SPORT SEDAN



OCEAN ALEXANDER 420 SPORT SEDAN

