



DE VALK  
YACHT BROKERS



SUNBEAM 42 DS



DE VALK  
YACHT BROKERS

BROKERAGE | CHARTER | BERTHS | FINANCE | INSURANCE | YACHT MANAGEMENT

# SUNBEAM 42 DS

## BROKER'S COMMENTS

The Sunbeam 42 DS is a very characteristic yacht. Due to it's decksalon and centre cockpit there is always a great spot where you can see all around you on both the in- as outside. The current owner has her for 15 years and made sure she is well taken care of. The stowaway mast, single lined reef system, electric winches and bow thruster makes her good and easy to handle, especially for small crews. The airco, heating, fridge, freezer, generator and hot shower make sure you're not short on anything. The Sunbeam 42 DS can be visited on appointment close to Zadar airport.

*Koen Mulder*

## SPECIFICATIONS

<b>Dimensions</b>	12.60 x 4.40 x 1.95 (m)	<b>Builder</b>	Schöchl Yachtbau
<b>Built</b>	2005	<b>Cabins</b>	2
<b>Material</b>	GRP	<b>Berths</b>	5
<b>Engine(s)</b>	1 x Yanmar 4JH3TE diesel	<b>Hp/Kw</b>	75.00 (hp), 55.20 (kw)
<b>Asking price</b>	sold (VAT )	<b>Lying</b>	elsewhere / Not at sales office

## CONTACT

<b>Sales office</b>	De Valk Dalmatia	<b>Telephone</b>	+385 914 567 834
<b>Address</b>	Ul. Velimira Skorpika 22000 Sibenik HR	<b>E-mail</b>	dalmatia@devalk.nl

## DISCLAIMER

These particulars are given in good faith as supplied but cannot be guaranteed.



# SUNBEAM 42 DS

## GENERAL

Model	SUNBEAM 42 DS
Type	sailing yacht
LOA (m)	12,60
LWL (m)	11,20
Beam (m)	4,40
Draft (m)	1,95
Headroom (m)	2,12
Year built	2005
Builder	Schöchl Yachtbau
Country	Austria
Designer	J & J
Displacement (t)	12,6
Ballast (tonnes)	4
CE norm	A
Hull material	GRP
Hull colour	white
Hull shape	round-bilged
Keel type	bulb keel
Superstructure material	GRP
Rubbing strake	aluminum
Deck material	GRP
Deck finish	teak
Superstructure deck finish	non-skid moulded in
Cockpit deck finish	teak
Antifouling (year)	2023
Window frame	aluminium With rubber
Window material	tempered glass Panorama view
Deckhatch	4x
Fuel tank (litre)	stainless steel 300
Level indicator (fuel tank)	yes



Freshwater tank (litre)	stainless steel 570
Blackwater tank (litre)	stainless steel 2x 50L
Blackwater tank extraction	deck extraction + pump
Wheel steering	mechanical
Emergency tiller	yes
More info on hull	TruDesign sea cocks

## ACCOMMODATION

Cabins	2
Berths	5
Interior	mahogany Sapelli
Floor	teak
Open cockpit	yes
Deck saloon	yes
Saloon	yes
Headroom saloon (m)	2,12
Air-conditioning	reverse cycle airco Coolmaxx 16000 BTU
Chart table	yes
Aft Cabin	yes
Dinette	yes
Sliding door to cockpit	yes
Galley	yes
Countertop	corian
Sink	stainless steel
Cooker	calor gas 2 burner, tested in 2021
Oven	yes
Microwave	yes
Fridge	Isotherm 120 L.
Hot water system	220V + engine 24 L.
Water pressure system	electrical
Owners cabin	double bed



# SUNBEAM 42 DS

Bed length (m)	1.60 x 2.00
Wardrobe	hanging and shelves
Bathroom	en suite
Toilet	en suite
Toilet system	manual
Wash basin	in the bathroom
Shower	en suite , large separated by sliding door
Guest cabin 1	v-bed
Bed length (m)	Ca. 2.00
Wardrobe	hanging and shelves
Bathroom	en suite
Toilet	en suite
Toilet system	manual
Wash basin	in the bathroom
Shower	en suite

## MACHINERY

No of engines	1
Make	Yanmar
Type	4JH3TE
HP	75
kW	55.20
Fuel	diesel
Year installed	2005
Maximum speed (kn)	8
Engine hours	1223
Engine cooling system	freshwater heat exchanger
Drive	shaft
Shaft seal	Renewed 2024
Engine controls	mechanical
Bowthruster	electric 80 kg.



# SUNBEAM 42 DS

Exhaust	watercooled
Propeller type	fixed
Propeller blades	3
Propeller shaft material	stainless steel
Shaft lubrication	water
Electric bilge pump	yes
Electrical installation	12 V + 230 V
Generator	wet exhaust Paguru 6000
Start battery	1x renewed in 2024
Service battery	2x renewed in 2018
Bowthruster battery	2x renewed in 2024
Battery monitor	Mastervolt
Battery charger	Mastervolt
Inverter	Mastervolt
Solar panel	2x
Shorepower	with cable
Insulation transformer	yes
Extra info	2024 the heat exchanger was cleaned
Extra info	2024 coolant circulation pump was renewed
Extra info	2024 revision of sea water circulation pump

## NAVIGATION

Compass	Horizon 135
Depth sounder	Raymarine
Windset	Raymarine
VHF	Raymarine
VHF handheld	ICOM IC-M33
Autopilot	Raymarine with remote
Plotter/GPS	Raymarine
Electronis chart(s)	yes
AIS transceiver	yes



## EQUIPMENT

Fixed windscreen	Glas
Sprayhood	Renewed in 2020
Cockpit cover	yes
Bimini	yes
Winter cover	Renewed in 2018
Cockpit table	yes
Boarding ladder	yes
Bow ladder	Stainless
Gangway	Niro
Deck shower	Hot and cold
Anchor	Delta 24 KG
Anchor chain	50 meter 8 mm
Windlass	Lofrans (1000 Watt) with remote and cockpit control
Dinghy	Bombard
Outboard	Honda 2.3 hp
Outboard support	yes
Sea railing	stainless steel / wire
Grab rail (superstructure)	stainless steel
Railing side opening gates	yes
Life raft	Transocean 4 (not serviced)
Safety lines on deck	yes
Radar reflector	yes
Fenders	8x with Fender-Design outskirts
Mooring lines	yes
Radio	Kenwood
Cockpit speakers	yes
Speakers in salon	yes

## RIGGING

Rigging	sloop
---------	-------



# SUNBEAM 42 DS

<b>Standing rigging</b>	wire
<b>Brand mast</b>	Seldén
<b>Material mast</b>	aluminium
<b>Spreaders</b>	3
<b>Mainsail</b>	37 M2
<b>Stoway mast</b>	yes
<b>Genoa</b>	Doyle 56,6 m2
<b>Genoa furler</b>	Furlex 300s
<b>Genoa cover</b>	Doyle (2018)
<b>Gennaker</b>	Paragen 112 m2
<b>Boomvang</b>	gasspring Rodkicker
<b>Primary sheet winch</b>	Mainsail, Harken 32, selftailing 2 speed
<b>Secondary sheet winch</b>	Harken, manual on mast
<b>Genoa sheetwinches</b>	Harken 53, selftailing 2 speed, Electric
<b>Halyard winches</b>	Harken 40, selftailing 2 speed, Electric





# SUNBEAM 42 DS



# SUNBEAM 42 DS





# SUNBEAM 42 DS



# SUNBEAM 42 DS



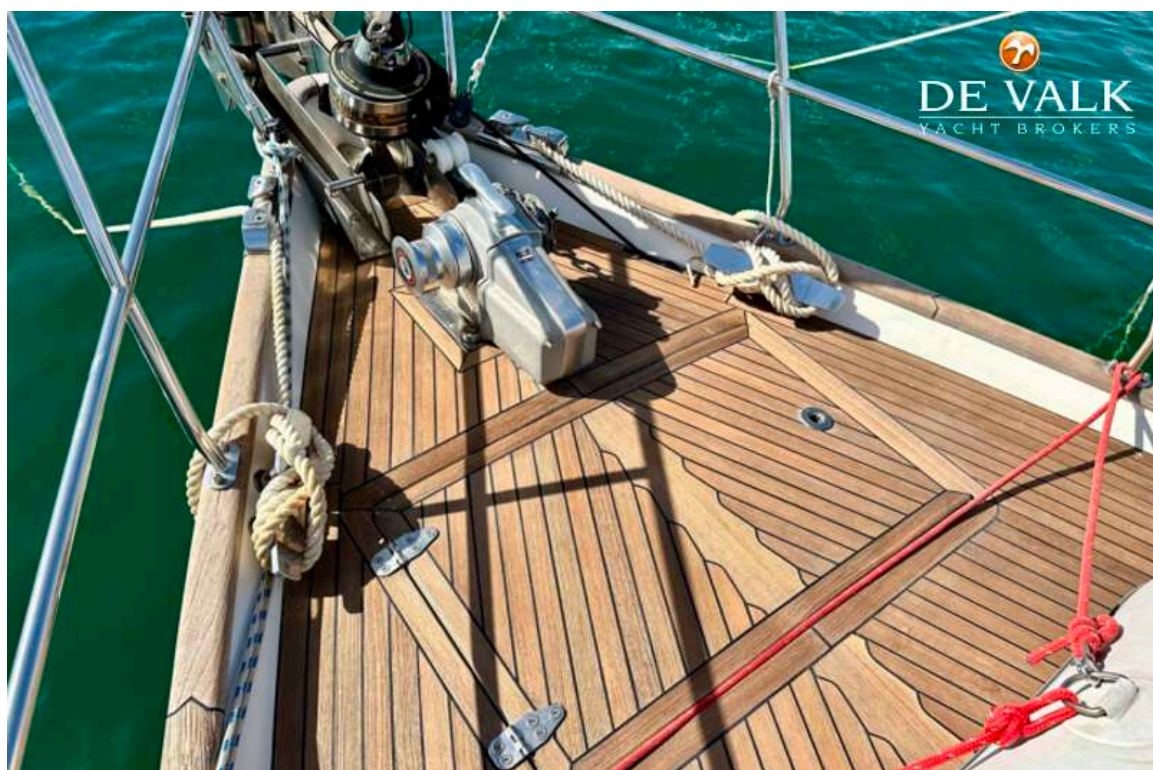
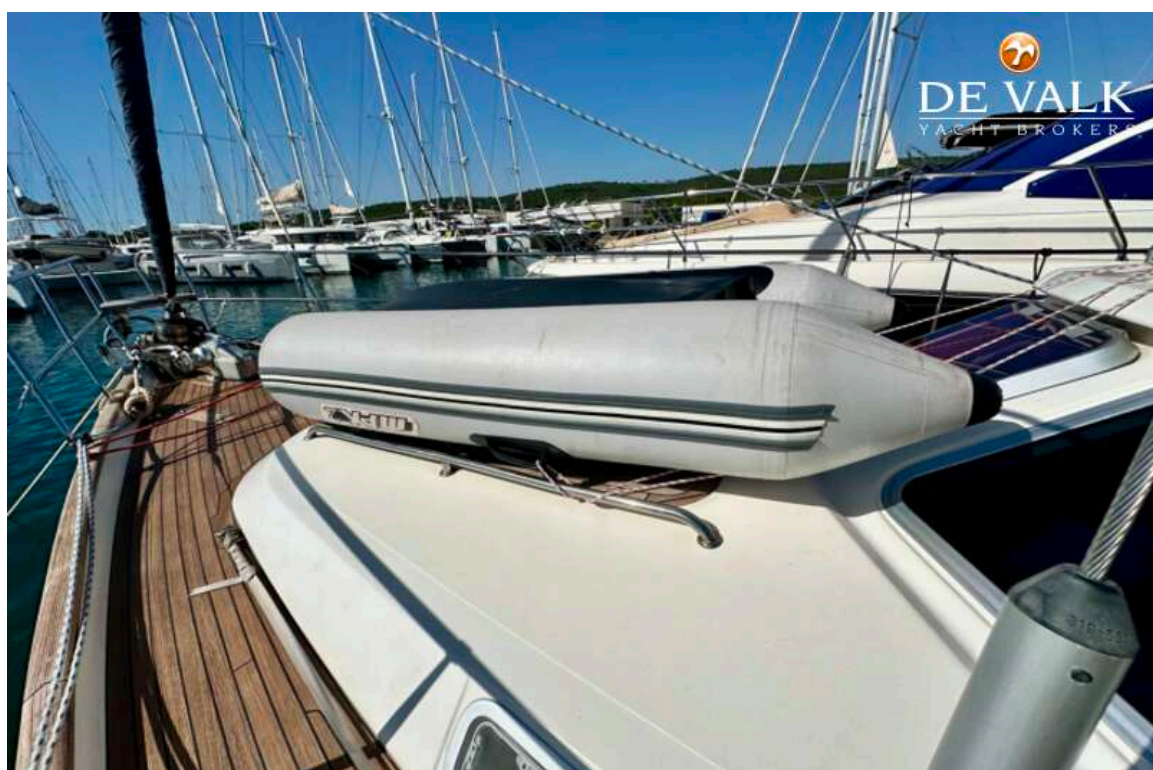


# SUNBEAM 42 DS



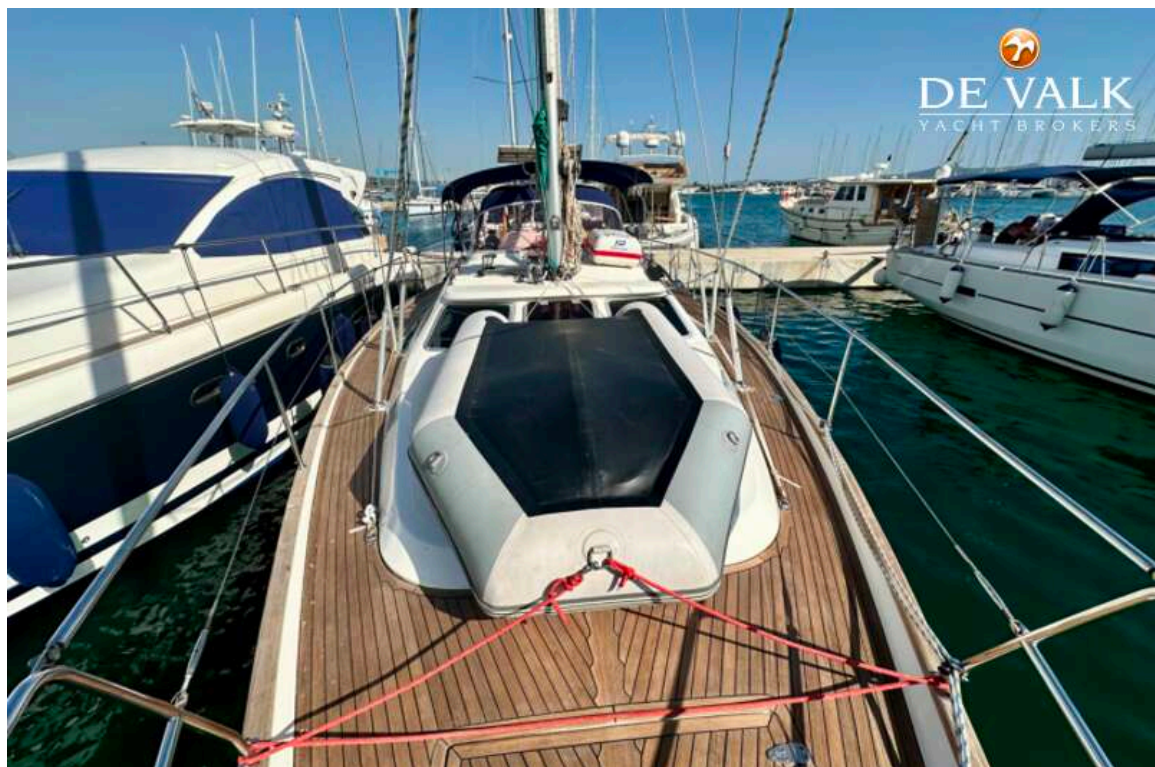


# SUNBEAM 42 DS





# SUNBEAM 42 DS





# SUNBEAM 42 DS



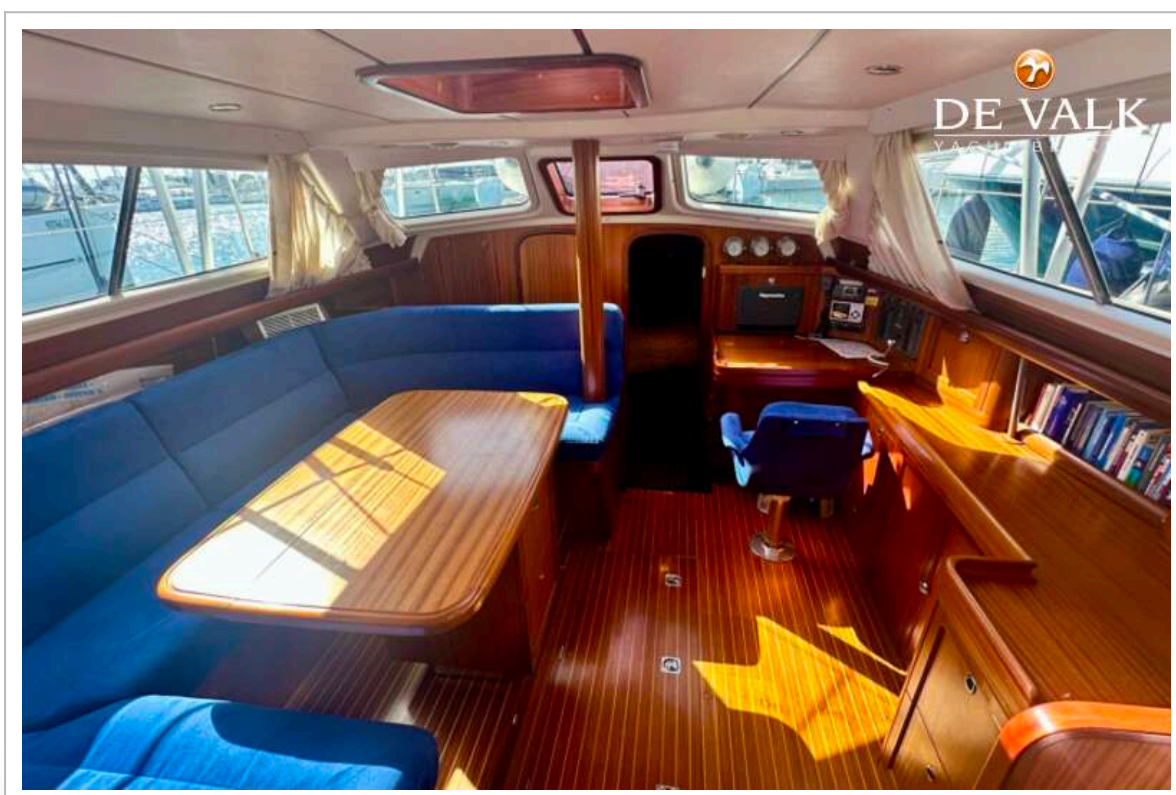


# SUNBEAM 42 DS





# SUNBEAM 42 DS

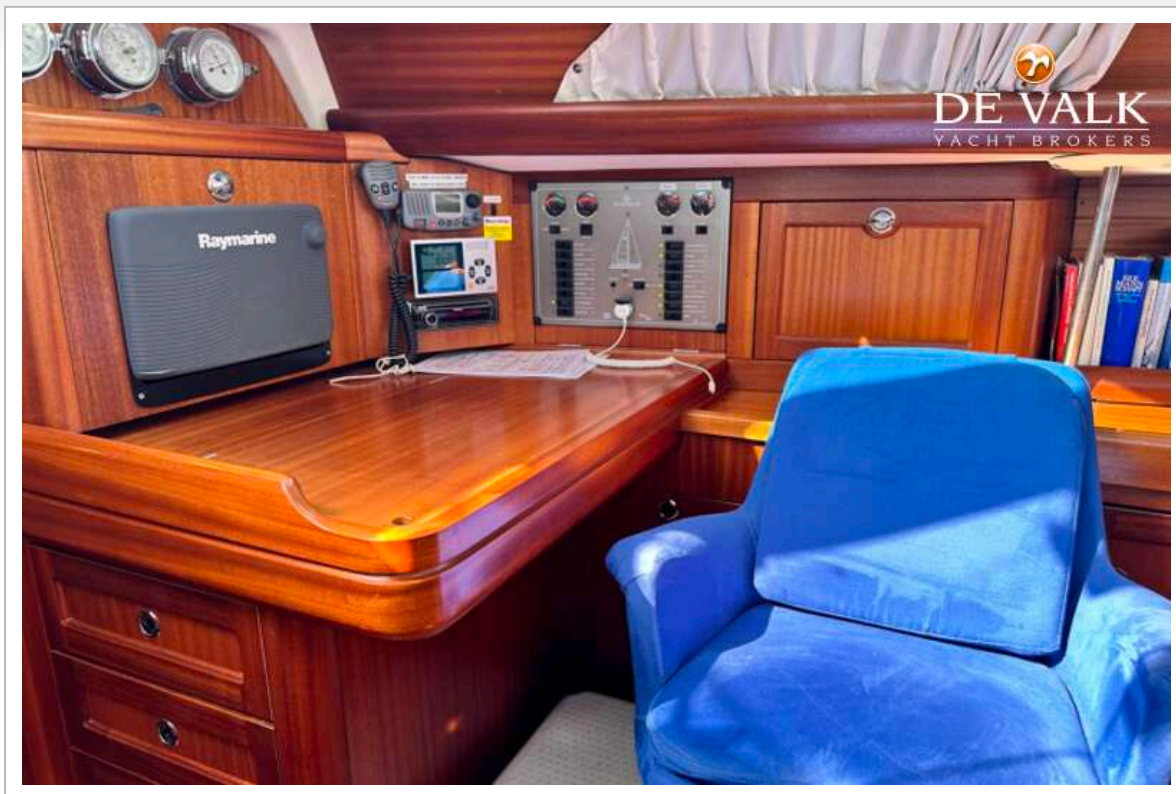


# SUNBEAM 42 DS

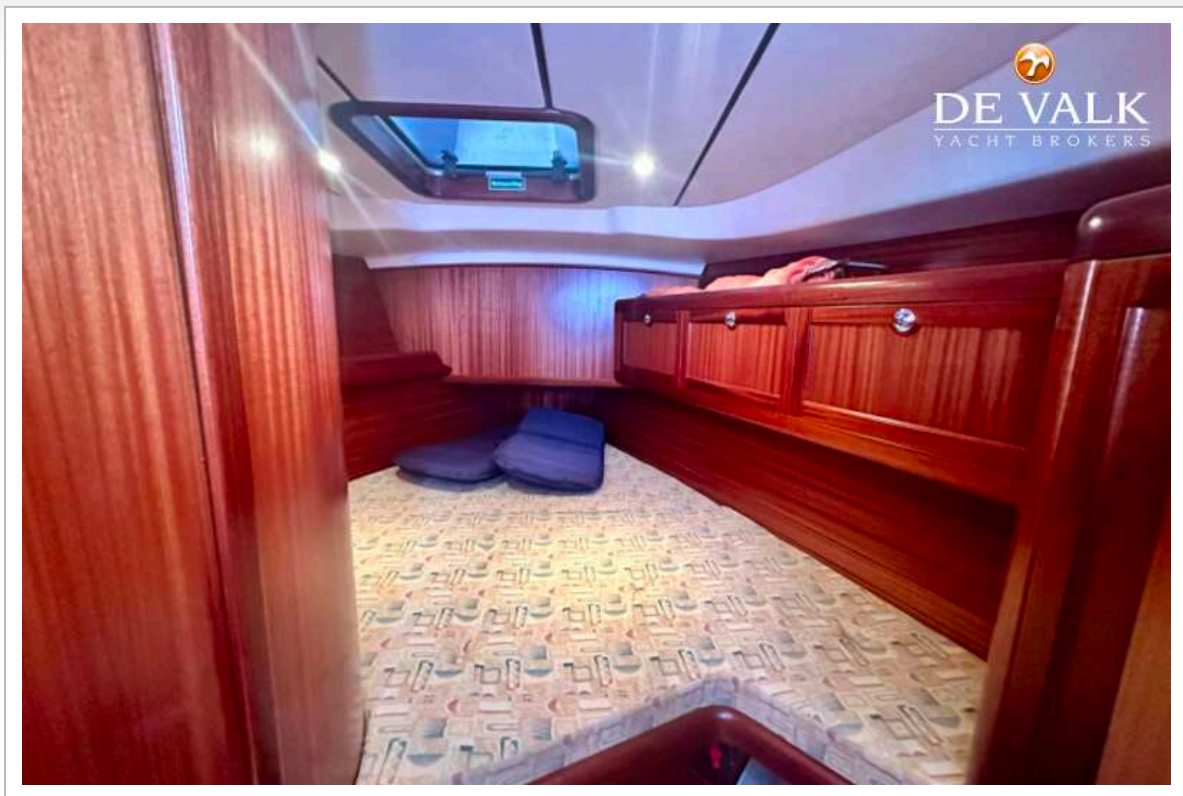




# SUNBEAM 42 DS

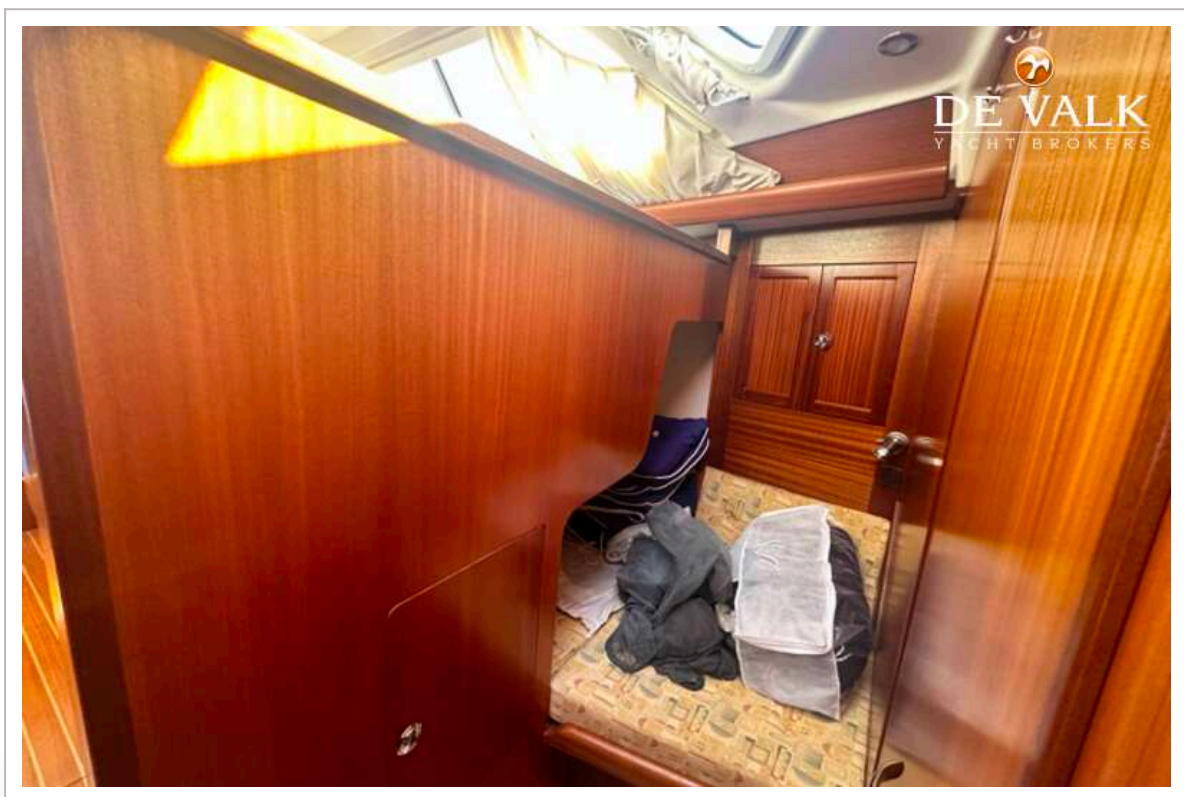
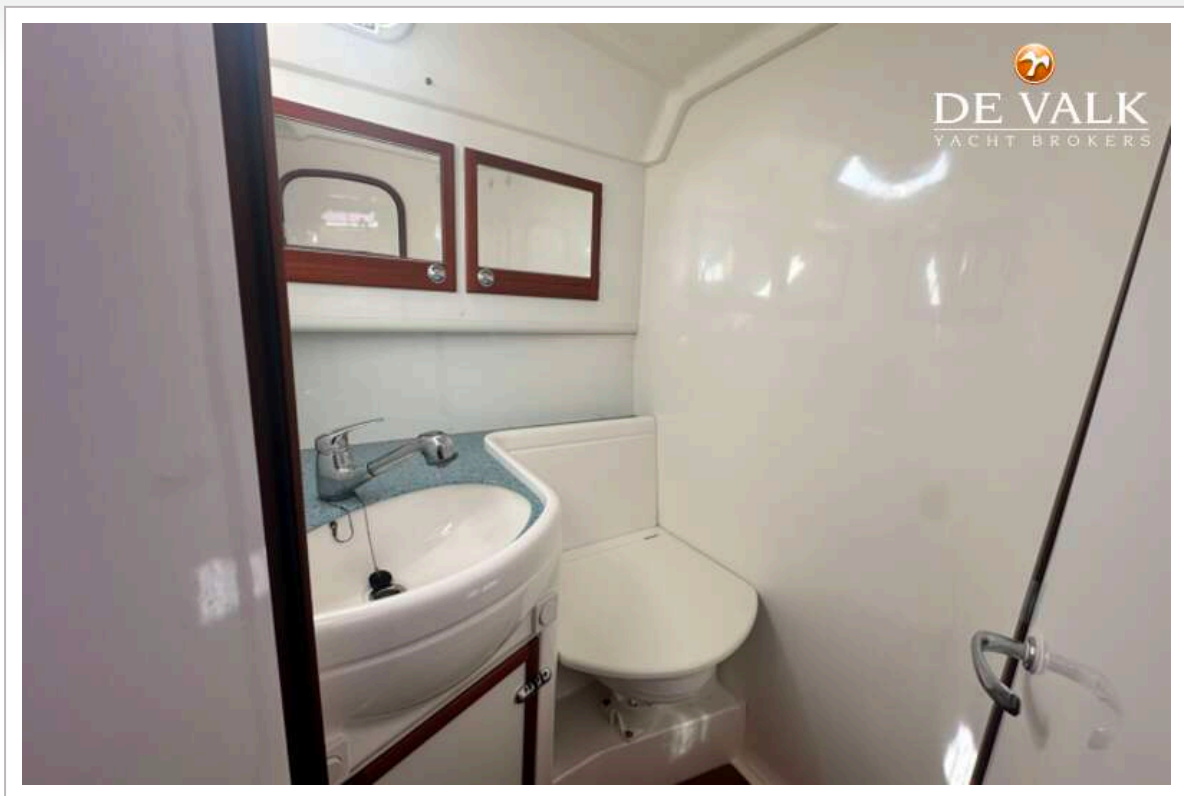


## SUNBEAM 42 DS





## SUNBEAM 42 DS

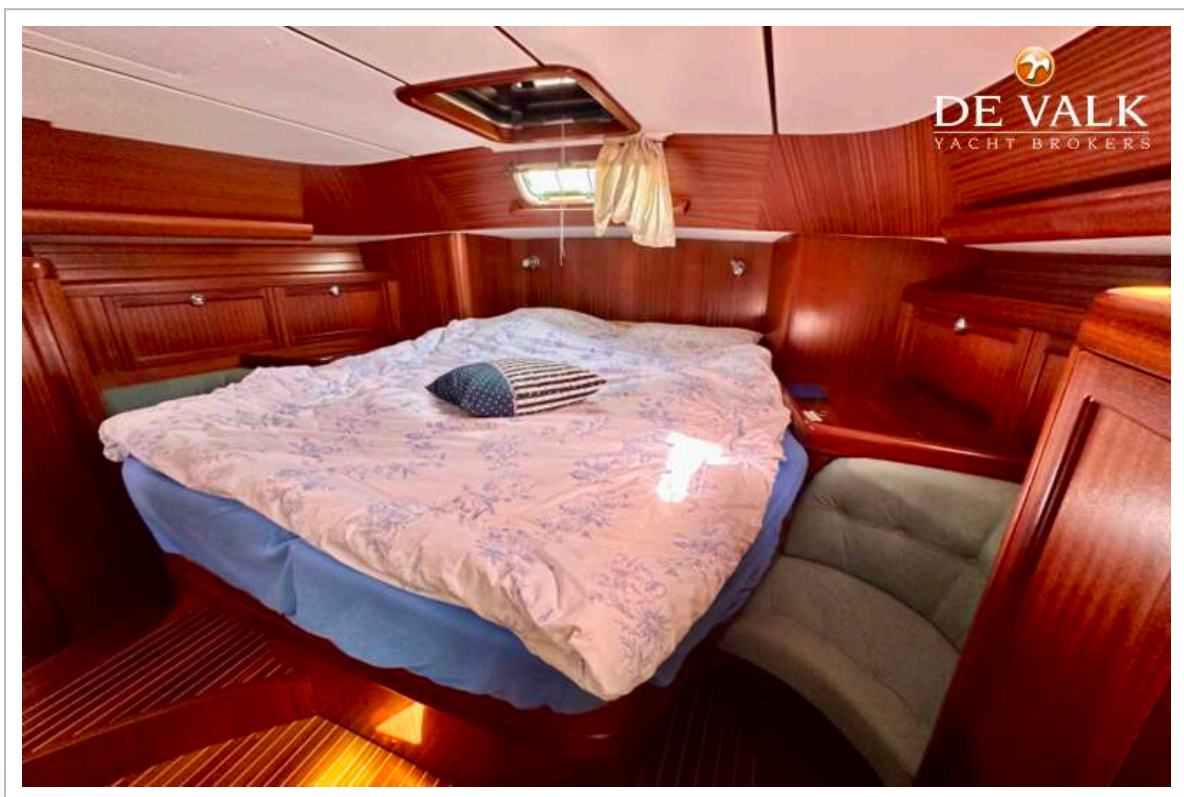
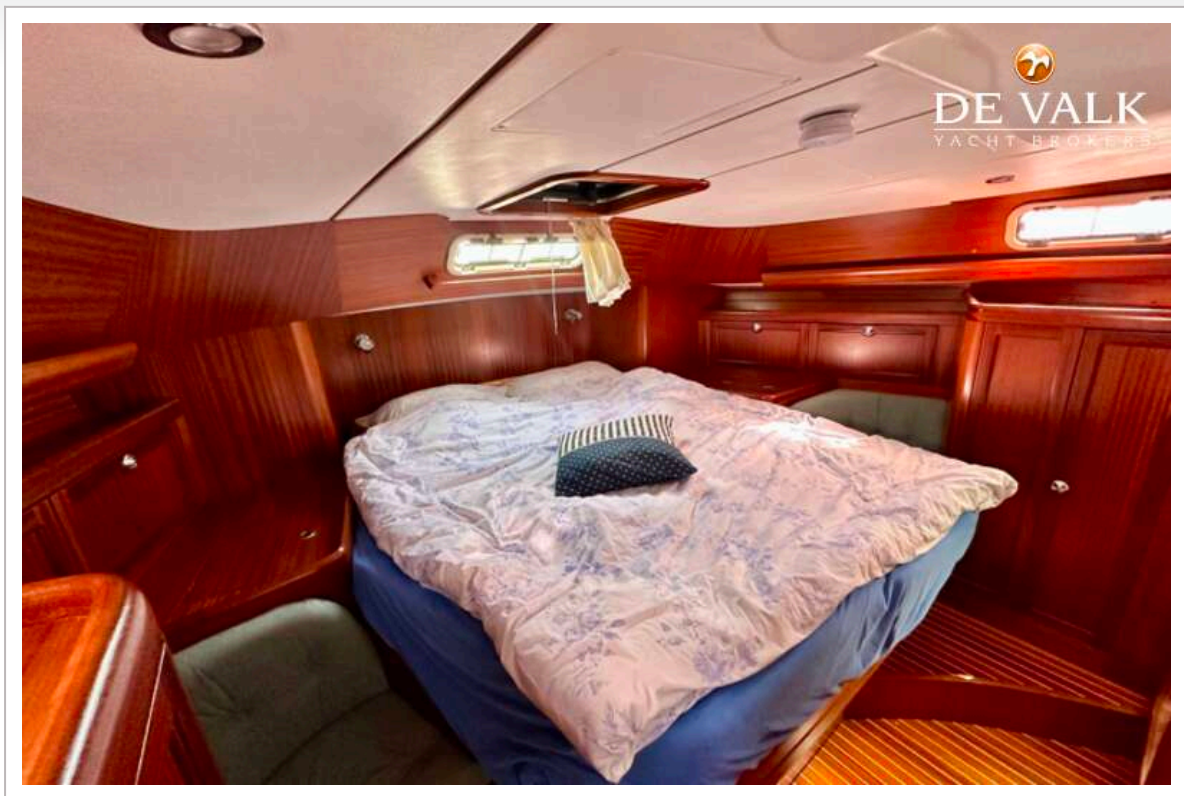


# SUNBEAM 42 DS





## SUNBEAM 42 DS





## SUNBEAM 42 DS



## SUNBEAM 42 DS





## SUNBEAM 42 DS

