



DE VALK
YACHT BROKERS



PACIFIC PEARL 205



DE VALK
YACHT BROKERS

PACIFIC PEARL 205

BROKER'S COMMENTS

This beautiful 'Pacific Pearl 205' features a modern and warm interior. Her folding doors allows you to enter the saloon from the aft deck. Due to the location of the kitchen in the foreship, more space has been created in the saloon and the kitchen. Below deck, this Pacific offers space for 8 berths. 1 owner's cabin, 2 spacious guest cabins. All 3 with their own wet cell. Below deck, there is another room with bunk beds. Furthermore, she has 2 strong John Deere main engines of which a completely new stainless steel exhaust system was installed in 2023.

Ian Pols

SPECIFICATIONS

Dimensions	20.80 x 5.65 x 1.60 (m)	Builder	Pacific Shipyards
Built	2014	Cabins	4
Material	Steel	Berths	8
Engine(s)	2 x John Deere 6068 SFM50 diesel	Hp/Kw	2 x 300.00 (hp), 220.80 (kw)
Asking price	€ 1.450.000 (VAT Paid)	Lying	elsewhere / Not at sales office

CONTACT

Sales office	De Valk Altena	Telephone	+31 162 727211
Address	Keizersveer 3A 4941 TA Raamsdonksveer The Netherlands	E-mail	altena@devalk.nl

DISCLAIMER

These particulars are given in good faith as supplied but cannot be guaranteed.



PACIFIC PEARL 205

GENERAL

Model	PACIFIC PEARL 205
Type	motor yacht
LOA (m)	20,80
Beam (m)	5,65
Draft (m)	1,60
Air draft (m)	6,45
Air draft min (m)	4,80
Headroom (m)	2,00
Year built	2014
Builder	Pacific Shipyards
Country	The Netherlands
Displacement (t)	55
CE norm	A
Hull material	steel
Hull colour	grey Matallic
Hull shape	round-bilged
Superstructure material	steel
Rubbing strake	stainless steel
Deck material	steel
Deck finish	teak
Superstructure deck finish	paint
Antifouling (year)	2024
Window frame	In hull frame
Window material	double glazing
Portholes	aluminium
Insulation	foam
Flybridge	yes
Radar arch	collapsible
Mast can be lowered	hydraulic
Fuel tank (litre)	steel 5000



Level indicator (fuel tank)	yes
Freshwater tank (litre)	polyethylene 1500
Level indicator (freshwater)	yes
Blackwater tank (litre)	polyethylene 375
Level indicator (blackwater)	yes
Blackwater tank extraction	deck extraction + pump
Wheel steering	hydraulic
Flybridge helm position	hydraulic

ACCOMMODATION

Cabins	4
Berths	8
Interior	walnut
Floor	carpet
Aft deck	yes
Pilot house	yes
Saloon	yes
Headroom saloon (m)	2,00
Heating	floor heating
Heating 2	central heating Kabola
Air-conditioning	reverse cycle airco Webasto (2023)
Opening door to cockpit	yes
Galley	yes
Countertop	Natuur steen
Sink	stainless steel
Cooker	induction Bosch
Microwave/oven combi	Bosch
Fridge	Bosch
Freezer	Bosch
Hot water system	on central heating
Water pressure system	electrical



PACIFIC PEARL 205

Dishwasher	Bosch
Owners cabin	French bed
Wardrobe	hanging/drawers/shelves
Bathroom	en suite
Toilet	en suite
Toilet system	electric
Wash basin	in the bathroom
Shower	en suite
Guest cabin 1	French bed
Wardrobe	hanging/drawers/shelves
Bathroom	en suite
Toilet	en suite
Toilet system	electric
Wash basin	in the bathroom
Shower	en suite
Guest cabin 2	French bed
Wardrobe	hanging/drawers/shelves
Bathroom	en suite
Toilet	en suite
Toilet system	electric
Wash basin	in the bathroom
Shower	en suite
Guest cabin 3	bunk bed
Washing machine	yes
Dryer	yes
Tender garage	yes

MACHINERY

No of engines	2
Make	John Deere
Type	6068 SFM50



PACIFIC PEARL 205

HP	300
kW	220.80
Fuel	diesel
Engine hours	937
Engine cooling system	freshwater heat exchanger
Drive	shaft
Gearbox	hydraulic
Bowthruster	hydraulic Vetus
Sternthruster	hydraulic Vetus
Exhaust	watercooled RVS316 New 2023
Propeller type	fixed
Propeller shaft material	stainless steel
Electric bilge pump	yes
Bilge alarm	yes
Electrical installation	12, 24, 230 V
Generator	Whisper Power M-GV3 7Kw
Service battery	3000 Ah, 24x 2V Whisper Power
Battery monitor	yes
Battery charger	2x Whisper power 150
Inverter	3x Whisper Power 3500W
Shorepower	with cable
Stabilizers	fin Vetus

NAVIGATION

Compass	Raymarine
Depth sounder	Raymarine
Log	Raymarine
VHF	Raymarine
Autopilot	Raymarine
Radar	Raymarine
GPS	Raymarine



Plotter	Raymarine
Camera	yes
Navigation lights	yes
Searchlight	yes

EQUIPMENT

Bimini	yes
Anchor	yes
Chain counter	yes
Windlass	yes
Capstan	yes
Deck wash	yes
Sea railing	stainless steel
Wiper	yes
Horn	yes
Fenders	yes
Mooring lines	yes
TV	yes
Radio	yes
Fire extinguisher	yes
Extinguisher in engine room	yes
Auto extinguisher system	yes



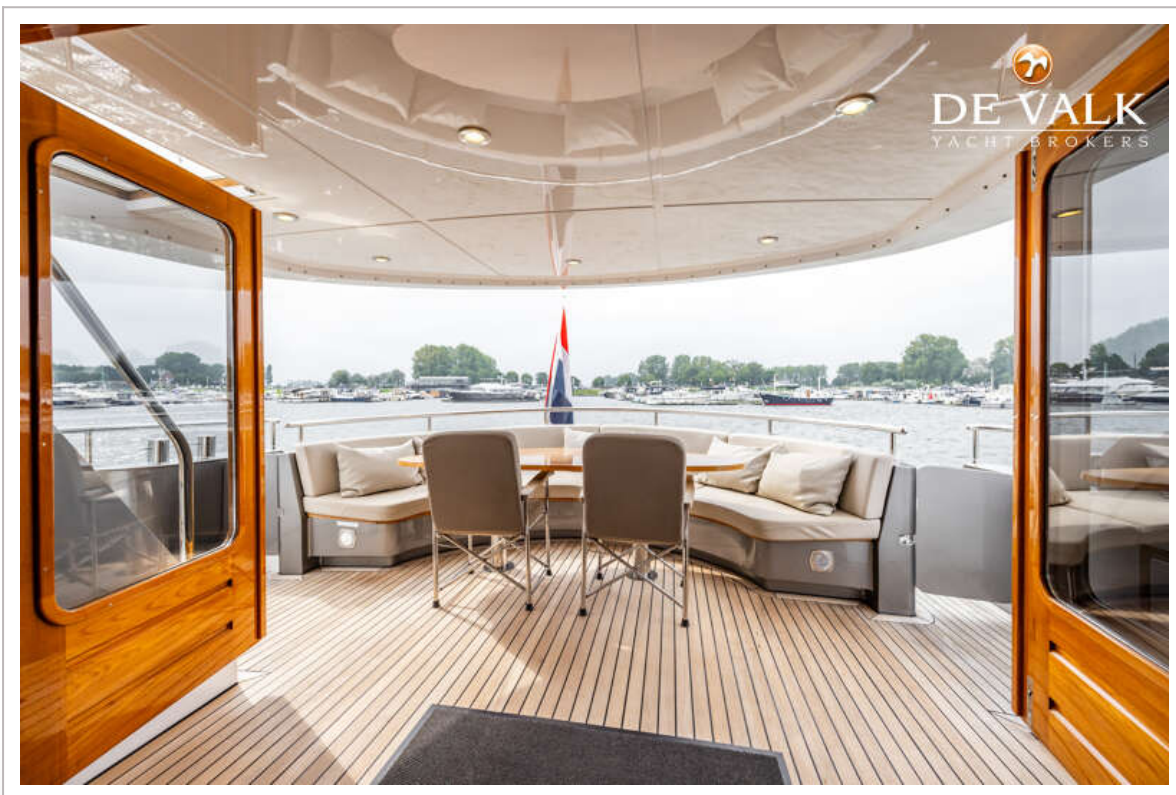
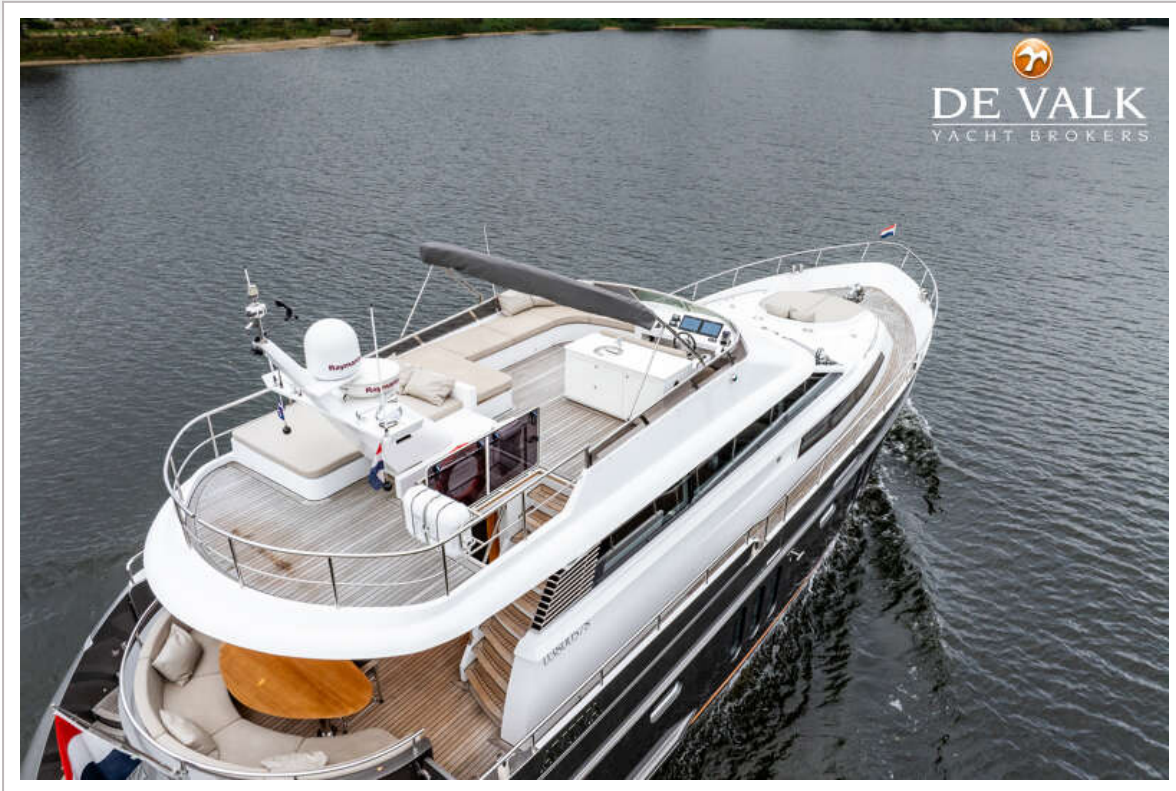
PACIFIC PEARL 205



PACIFIC PEARL 205



PACIFIC PEARL 205



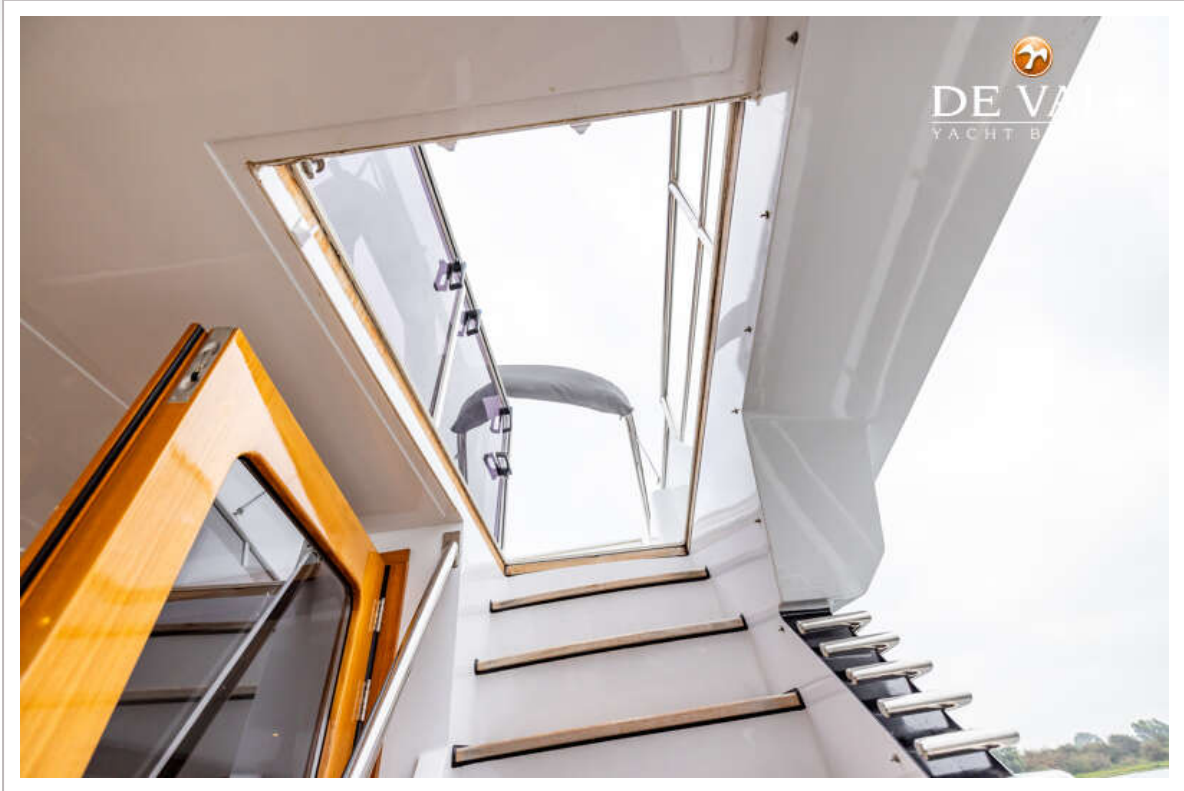
PACIFIC PEARL 205



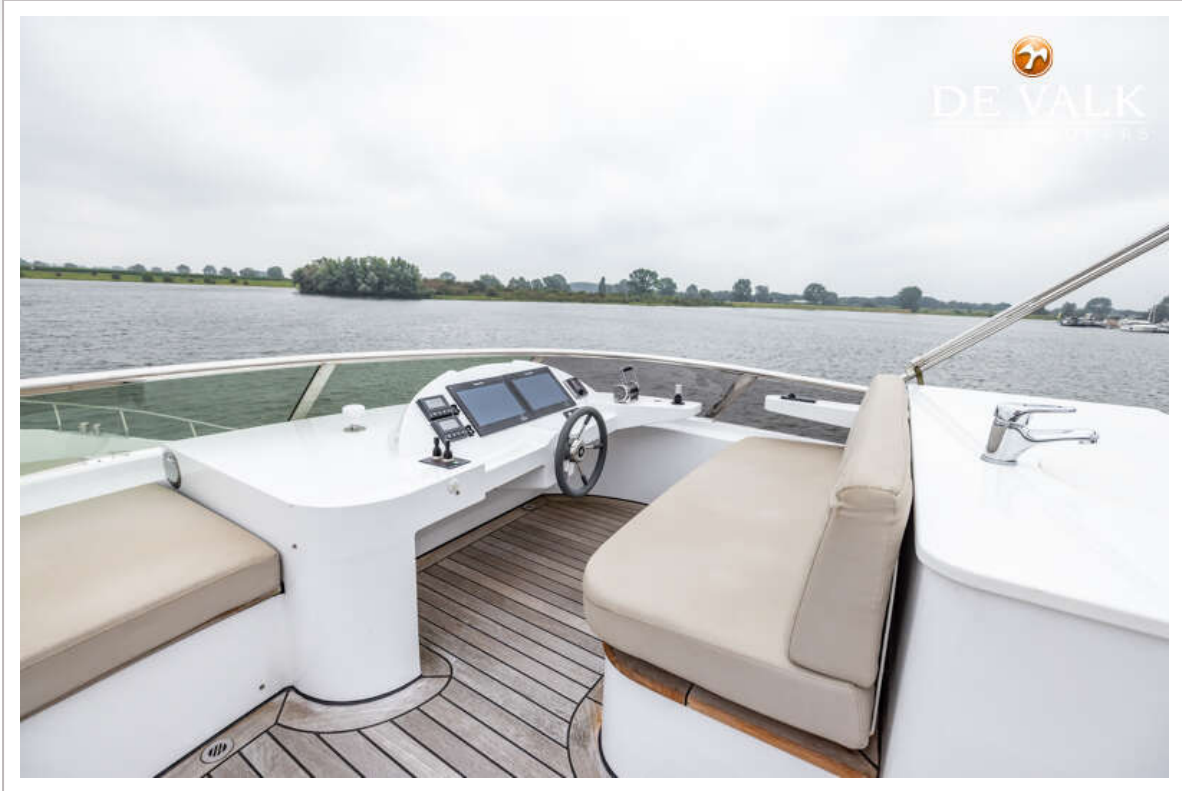
PACIFIC PEARL 205



PACIFIC PEARL 205



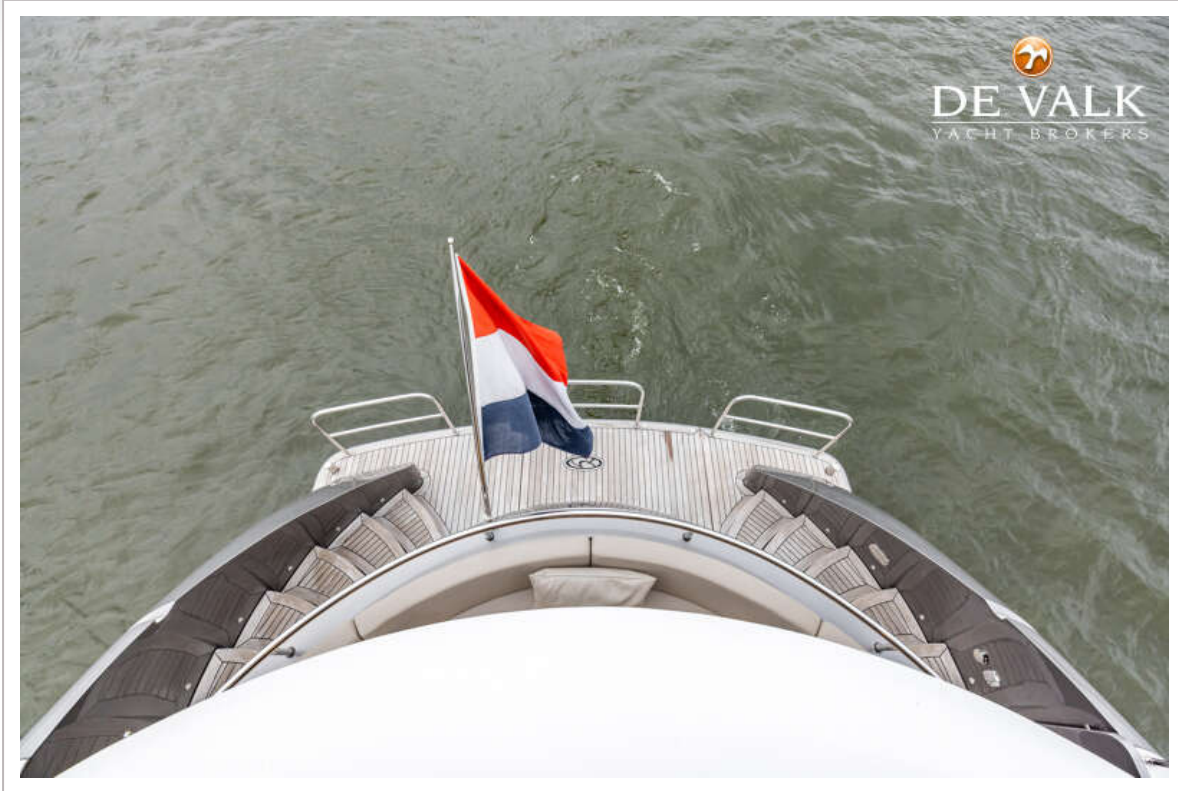
PACIFIC PEARL 205



PACIFIC PEARL 205



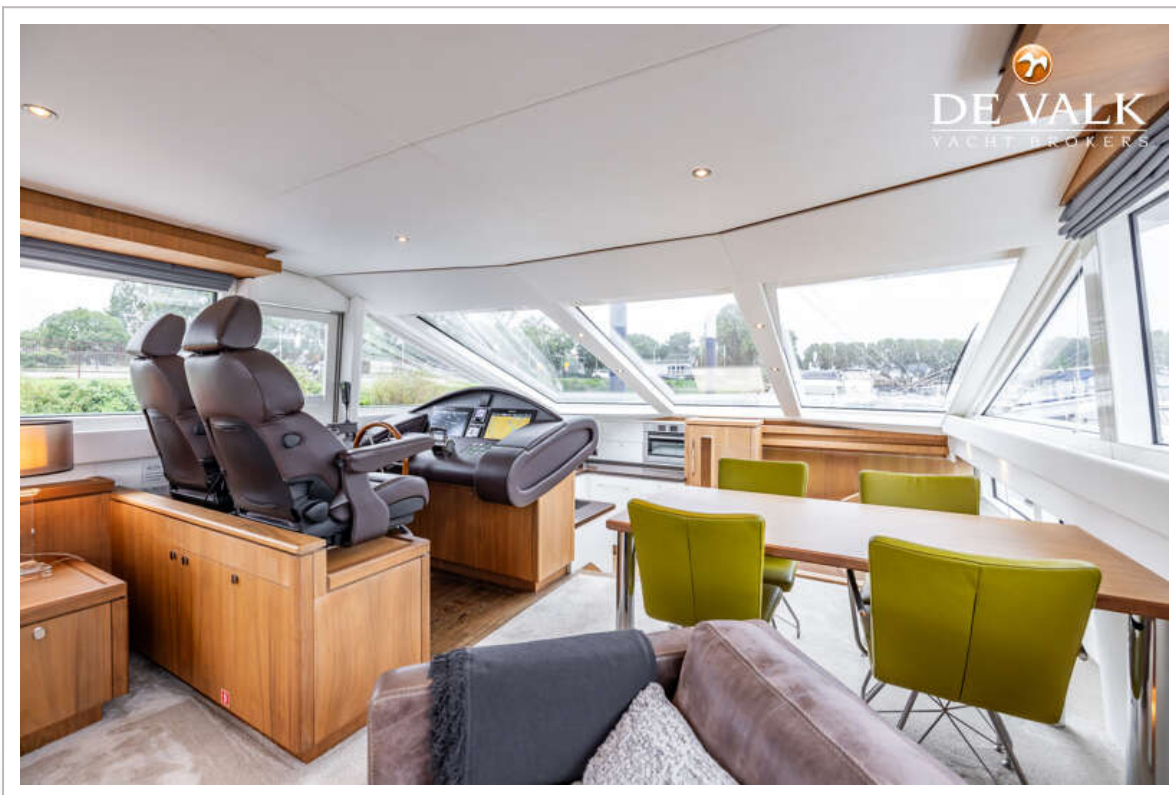
PACIFIC PEARL 205



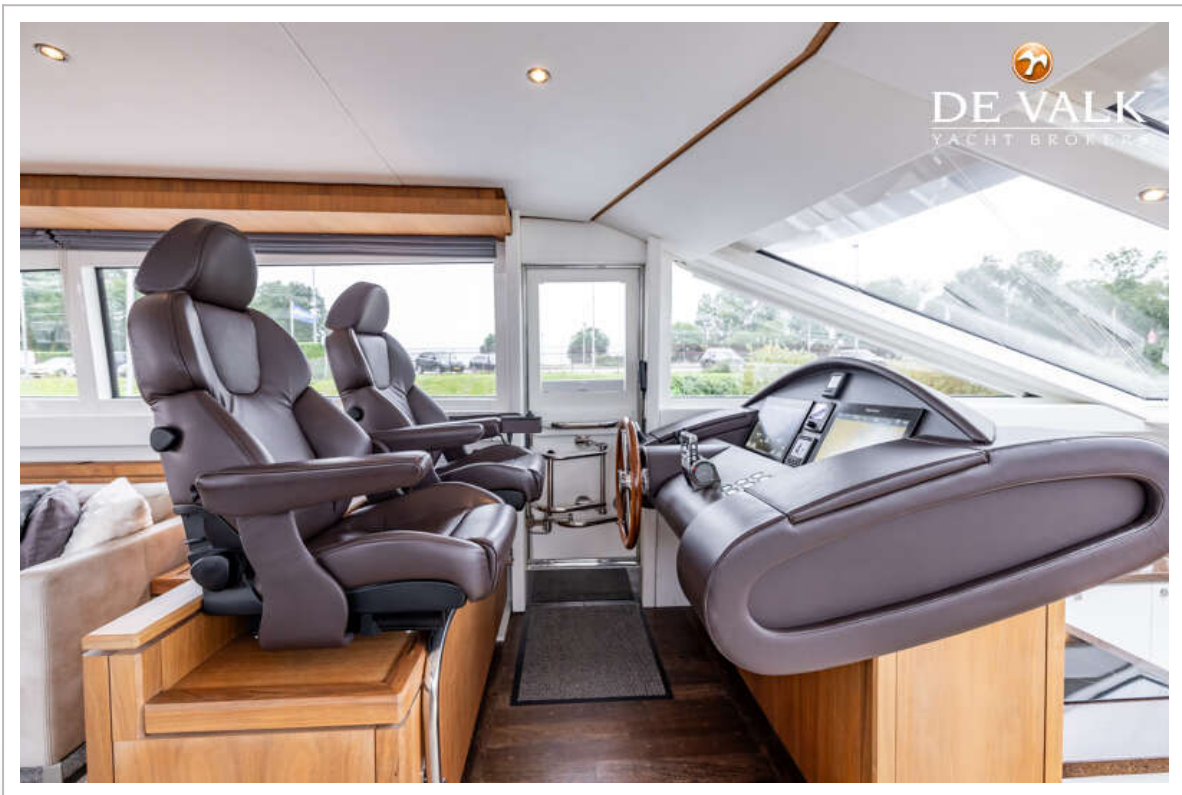
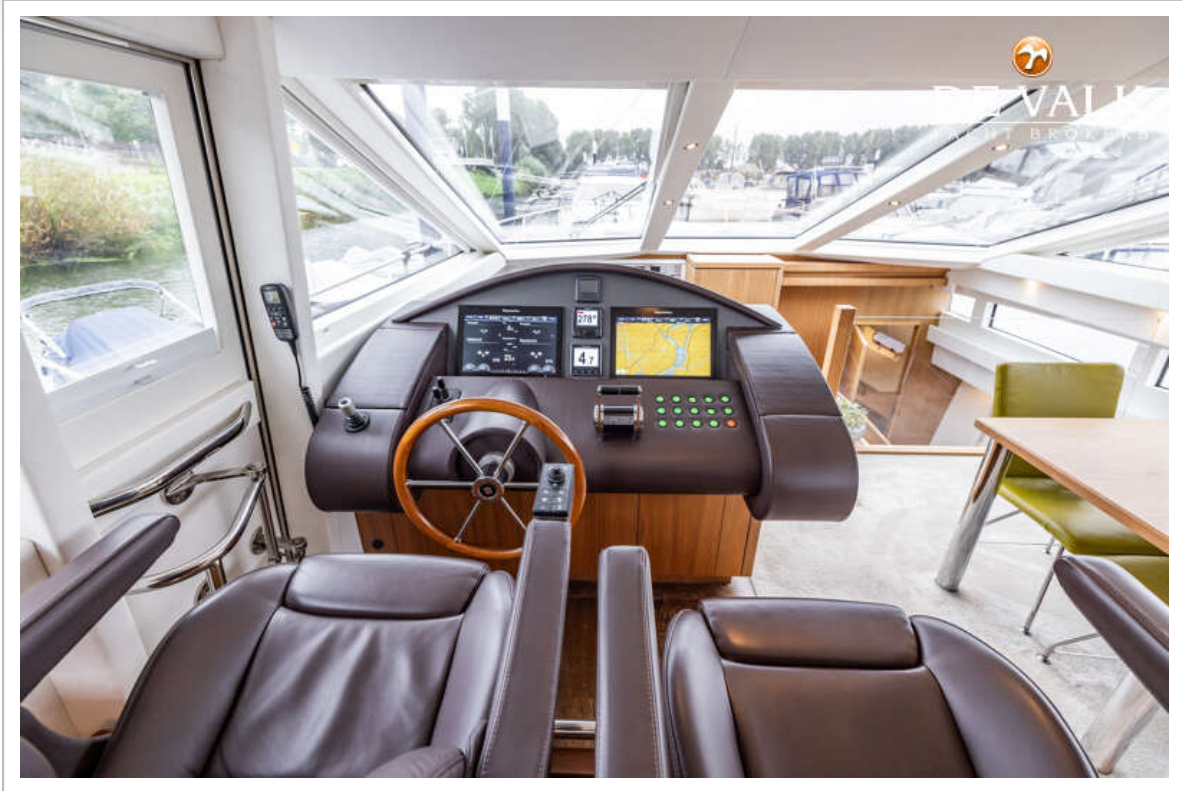
PACIFIC PEARL 205



PACIFIC PEARL 205



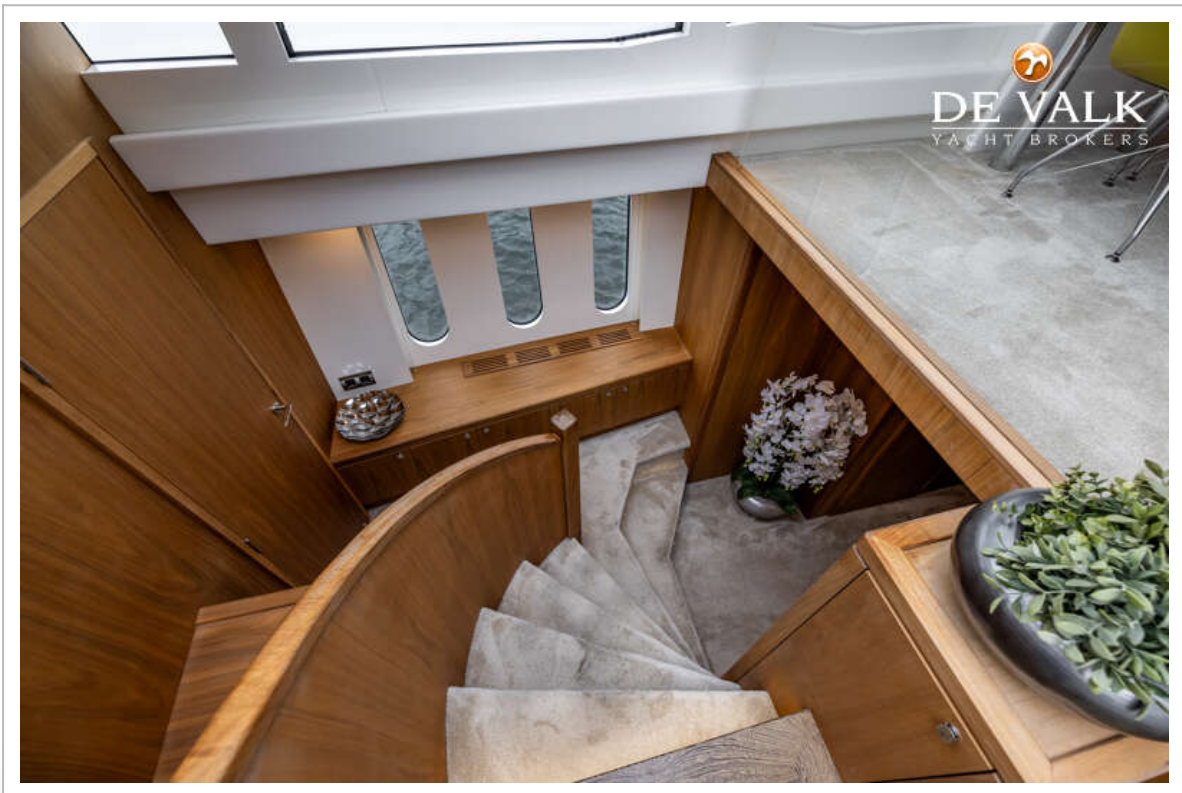
PACIFIC PEARL 205



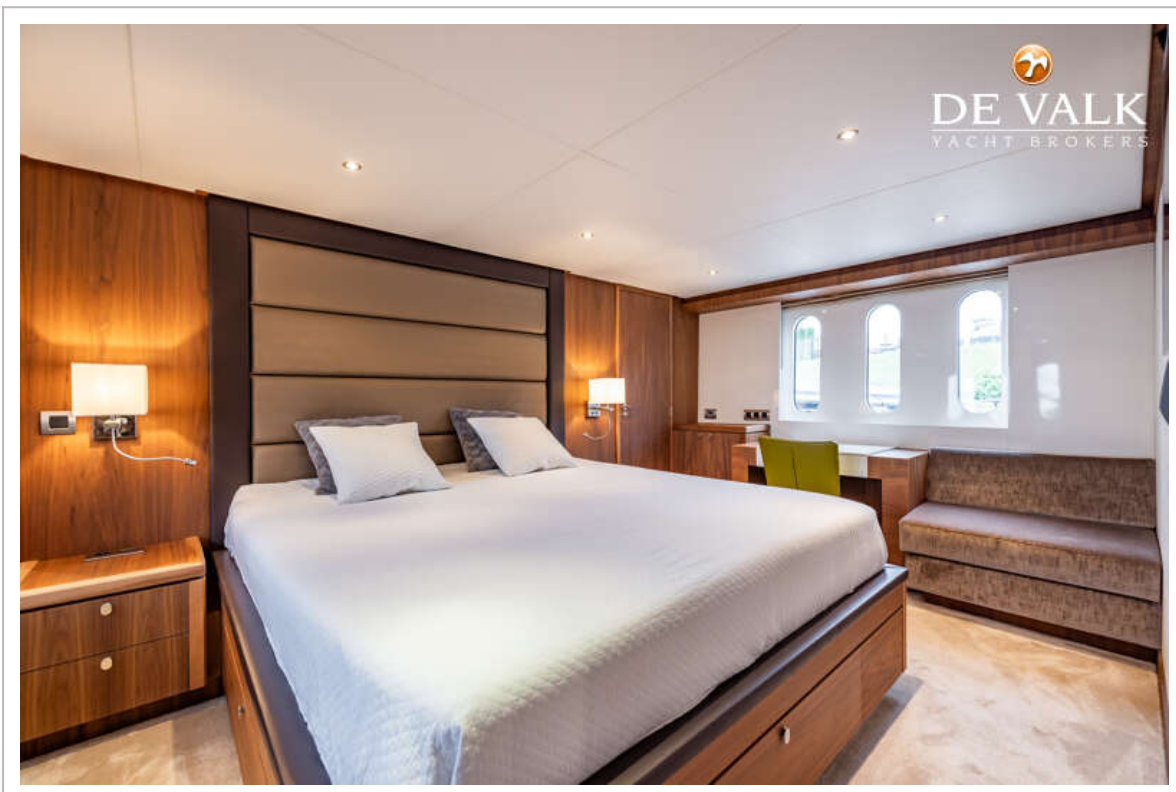
PACIFIC PEARL 205



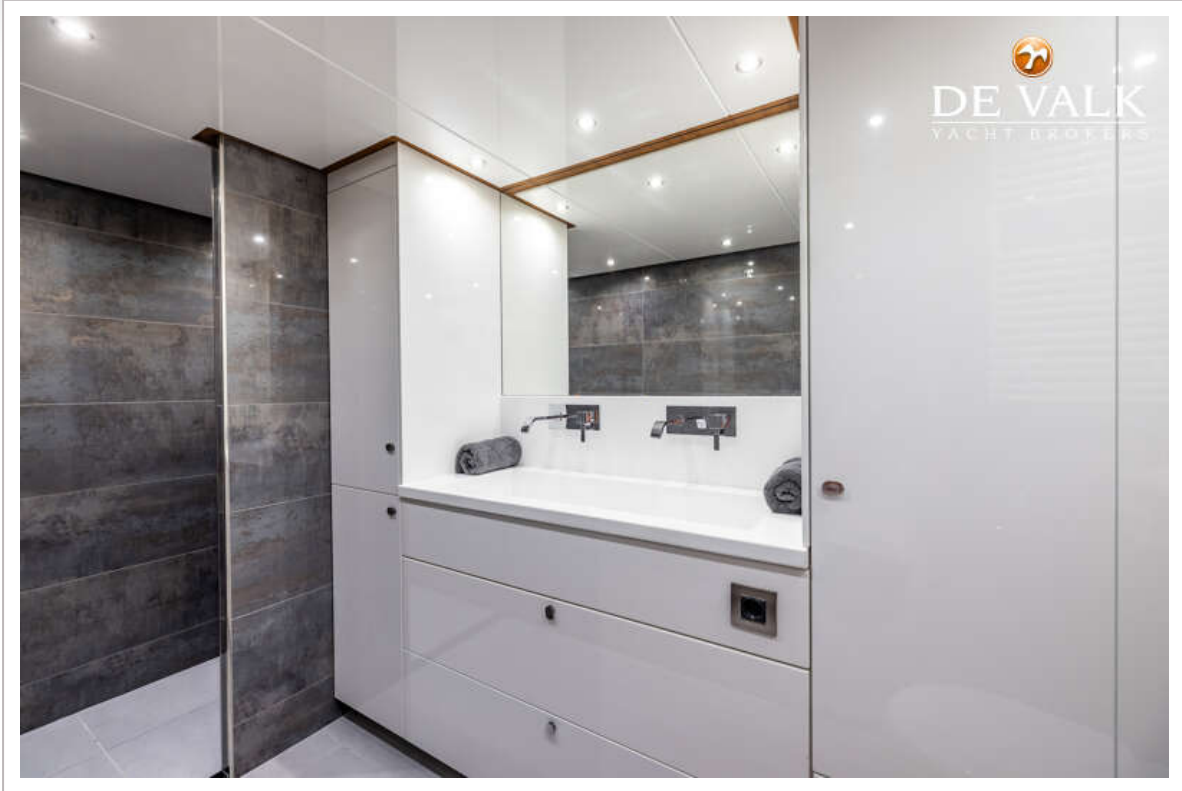
PACIFIC PEARL 205



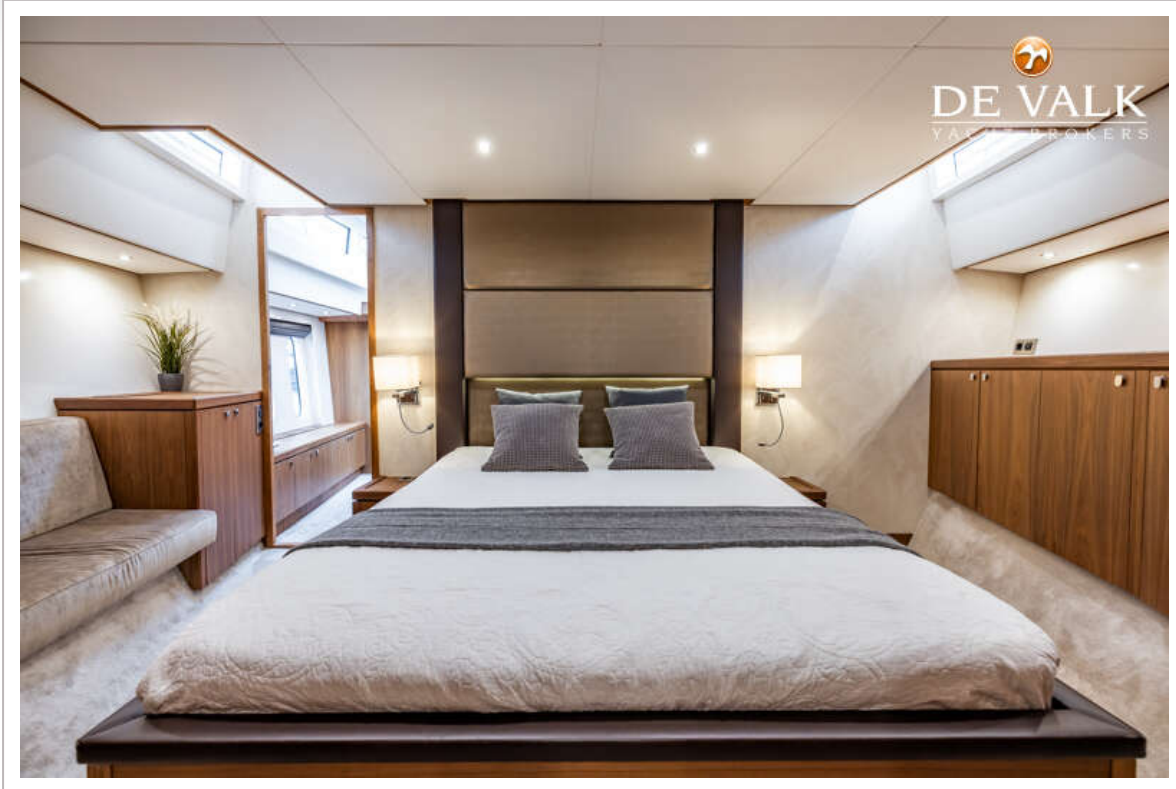
PACIFIC PEARL 205



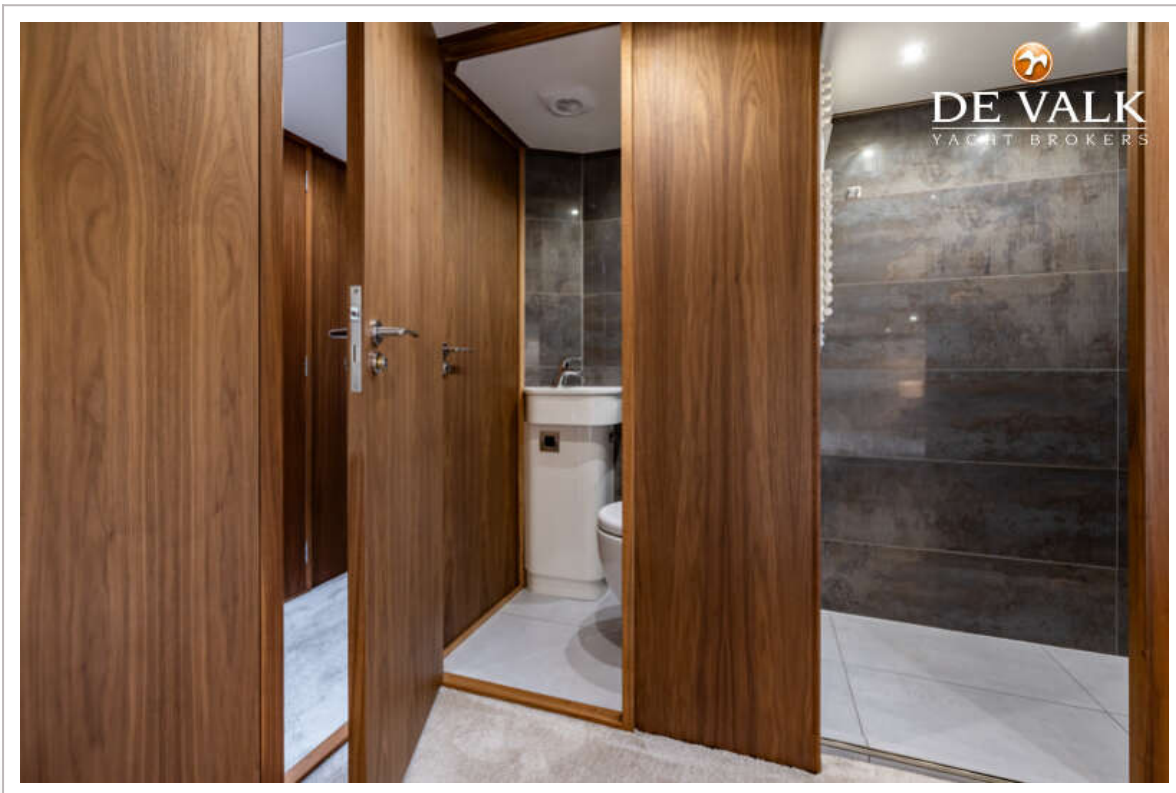
PACIFIC PEARL 205

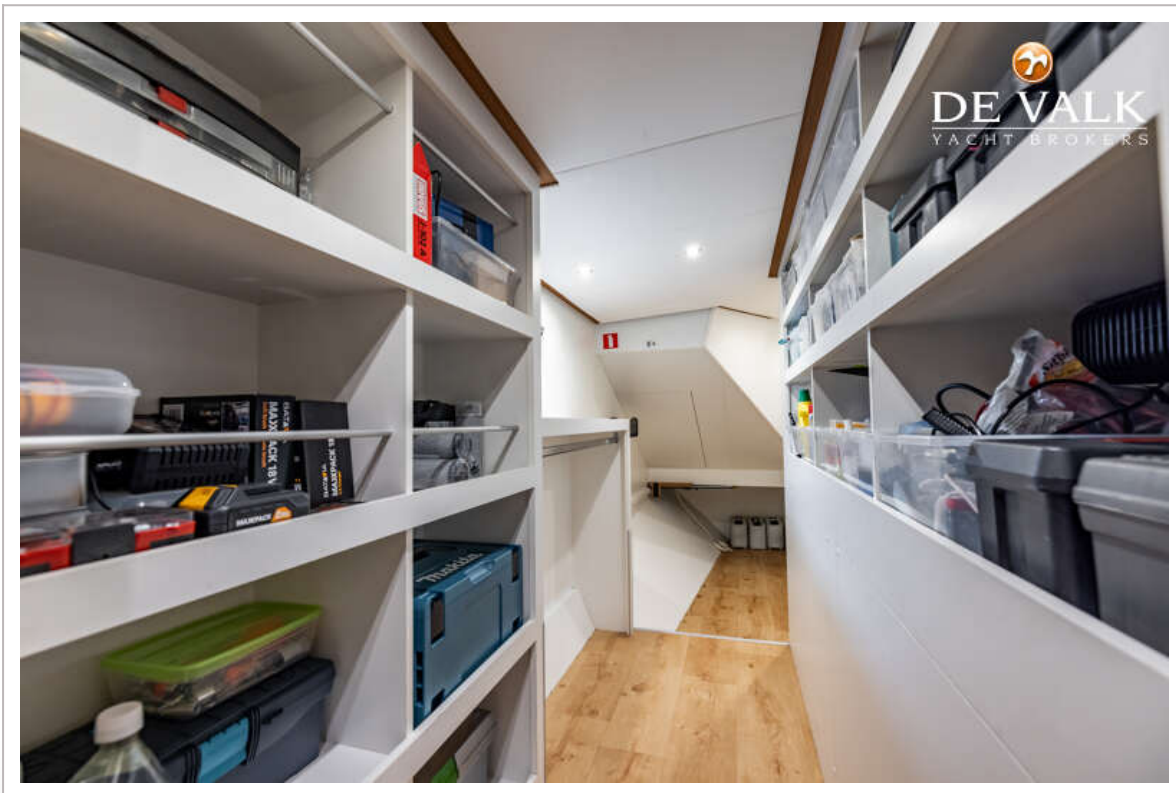
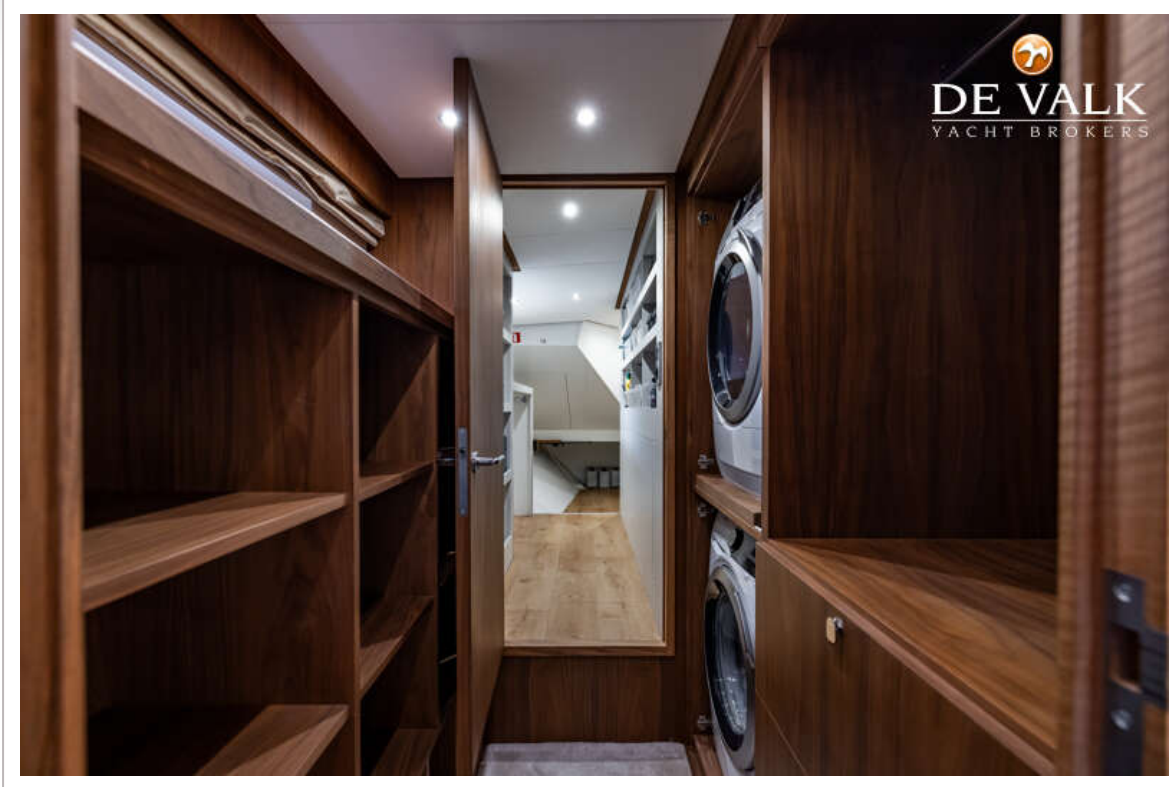


PACIFIC PEARL 205

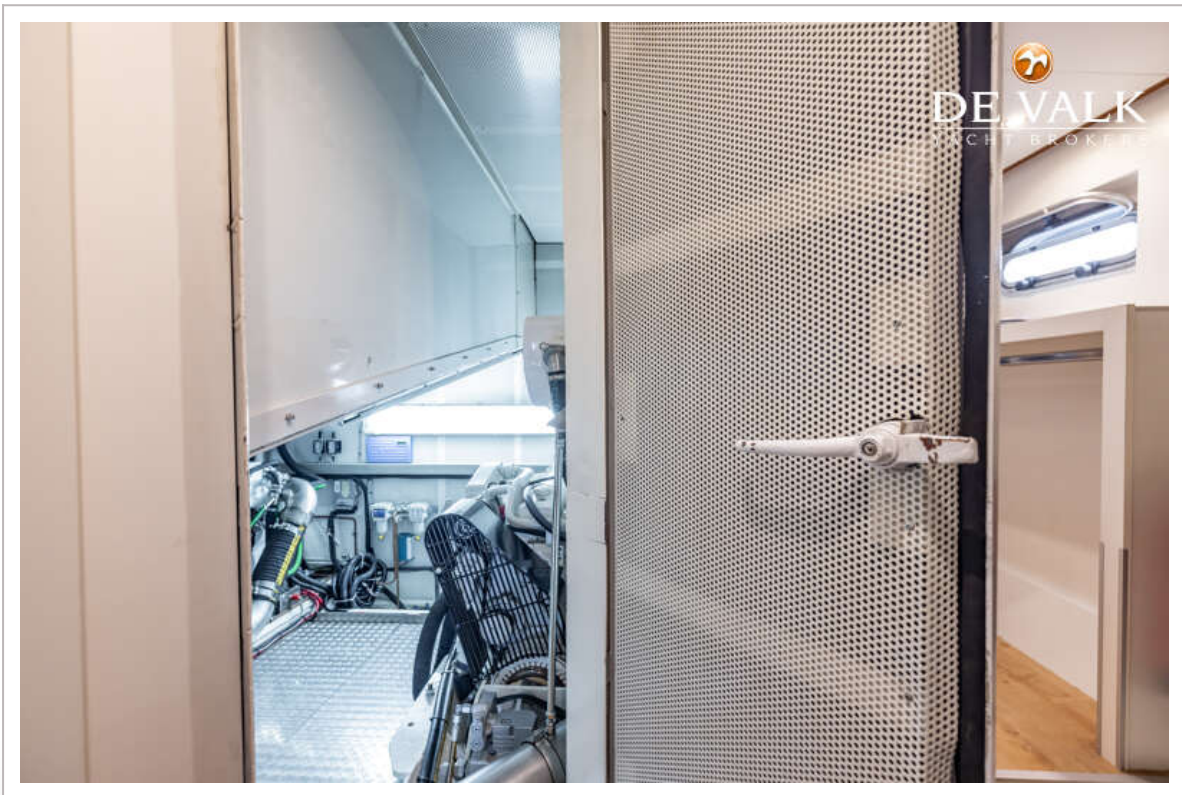


PACIFIC PEARL 205





PACIFIC PEARL 205



PACIFIC PEARL 205



PACIFIC PEARL 205

