



DE VALK
YACHT BROKERS



ALTENA BLUE WATER TRAWLER 58



DE VALK
YACHT BROKERS

ALTENA BLUE WATER TRAWLER 58

BROKER'S COMMENTS

This Altena Blue Water Trawler 'Ushuaia' has been well tackled by her current owners over the years. The teak deck has been completely replaced (2021), all upholstery has been replaced (2021), the entire ship has been repainted, the underwater hull has been sandblasted and this year she was fitted with a Hydronautica EMC/RMC system and new mattresses in the owners' cabin. The Altena Blue Watertrawler is a yacht with good sailing characteristics for inland & offshore waters.

Ian Pols

SPECIFICATIONS

Dimensions	17.42 x 5.08 x 1.60 (m)	Builder	Altena Yachting B.V.
Built	2002	Cabins	3
Material	Steel	Berths	6
Engine(s)	2 x John Deere 6068TFM50 diesel	Hp/Kw	2 x 175.00 (hp), 128.80 (kw)
Asking price	€ 529.000 (VAT Paid)	Lying	at sales office

CONTACT

Sales office	De Valk Altena	Telephone	+31 162 727211
Address	Keizersveer 3A 4941 TA Raamsdonksveer NL	E-mail	altena@devalk.nl

DISCLAIMER

These particulars are given in good faith as supplied but cannot be guaranteed.



ALTENA BLUE WATER TRAWLER 58

GENERAL

Model	ALTENA BLUE WATER TRAWLER 58
Type	motor yacht
LOA (m)	17,42
LWL (m)	15,72
Beam (m)	5,08
Draft (m)	1,60
Air draft (m)	8,50
Air draft min (m)	4,90
Headroom (m)	2,00
Year built	2002
Builder	Altena Yachting B.V.
Country	The Netherlands
Designer	O. Brinksma
Displacement (t)	50
CE norm	A
Hull material	steel
Hull colour	blue
Hull thickness (mm)	6
Hull shape	multi hard chine
Superstructure material	steel
Superstructure (mm)	4
Deck plate thickness (mm)	4
Rubbing strake	stainless steel
Deck material	steel
Deck finish	teak
Superstructure deck finish	teak
Window frame	aluminium
Window material	glass
Deckhatch	Aluminium
Portholes	aluminium



ALTENA BLUE WATER TRAWLER 58

Insulation	Minerale wol
Flybridge	yes
Radar arch	collapsible
Mast can be lowered	hydraulic
Fuel tank (litre)	steel 2x 1650
Fuel tank 2 (litre)	steel 2x 460
Level indicator (fuel tank)	yes
Fuel daytank (litre)	steel 1080
Level indicator (daytank)	yes
Freshwater tank (litre)	stainless steel 1x 750 1x 650
Level indicator (freshwater)	yes
Blackwater tank (litre)	stainless steel 1x 890 1x 180
Level indicator (blackwater)	yes
Blackwater tank extraction	deck extraction + pump
Wheel steering	hydraulic

ACCOMMODATION

Cabins	3
Berths	6
Interior	teak
Floor	teak
Headroom saloon (m)	2,00
Heating	central heating Kabola B17 Tap
Dinette	yes
Countertop	corian
Sink	stainless steel
Microwave/oven combi	Panasonic
Fridge	Dometic
Freezer	Dometic
Hot water system	on central heating
Water pressure system	electrical



ALTENA BLUE WATER TRAWLER 58

Dishwasher	Siemens
Owners cabin	yes
Wardrobe	hanging/drawers/shelves
Bathroom	en suite
Toilet	en suite
Toilet system	electric
Wash basin	in the bathroom
Shower	separate
Extra info	TV
Guest cabin 1	double bed
Wardrobe	hanging
Guest cabin 2	v-bed
Wardrobe	hanging and shelves
Bathroom	shared
Toilet	shared
Toilet system	electric
Wash basin	at the toilet
Shower	separate

MACHINERY

No of engines	2
Make	John Deere
Type	6068TFM50
HP	175
kW	128.80
Fuel	diesel
Engine hours	1225
Engine cooling system	freshwater heat exchanger
Drive	shaft
Engine controls	electrical & bowden cable
Gearbox	hydraulic



ALTENA BLUE WATER TRAWLER 58

Bowthruster	hydraulic Vetus
Sternthruster	hydraulic Vetus
Exhaust	watercooled
Propeller type	fixed
Propeller shaft material	stainless steel 60 mm
Shaft lubrication	water
Electric bilge pump	yes
Bilge alarm	yes
Electrical installation	24V/ 230V
Generator	wet exhaust MPW Marine Generator
Start battery	yes
Service battery	6x 230 Ah
Generator battery	yes
Battery charger/inverter	Mastervolt Mass 24/100
Shorepower	with cable
Stabilizers	fin
Extra info	Hydronautica EMC/ RMC 2024

NAVIGATION

Compass	yes
Multi control display	Raymarine
Depth sounder	yes
Log	yes
VHF	yes
VHF handheld	yes
Autopilot	RadioHolland
Rudder angle indicator	yes
Radar	yes
GPS	yes
Plotter	Raymarine
Wifi antenna	yes



ALTENA BLUE WATER TRAWLER 58

Electronis chart(s)	yes
Camera	yes
Navigation lights	yes
Searchlight	yes

EQUIPMENT

Bimini	yes
Cockpit table	yes
Cockpit chairs	yes
Bathing platform	yes
Deck shower	yes
Anchor	yes
Anchor chain	yes
Windlass	hydraulic
Capstan	Hydraulic
Deck wash	yes
Sea railing	stainless steel
Grab rail (superstructure)	stainless steel
Wiper	yes
Horn	yes
Fenders	yes
Mooring lines	yes
TV	yes
Radio	yes
Fire extinguisher	yes
Auto extinguisher system	yes



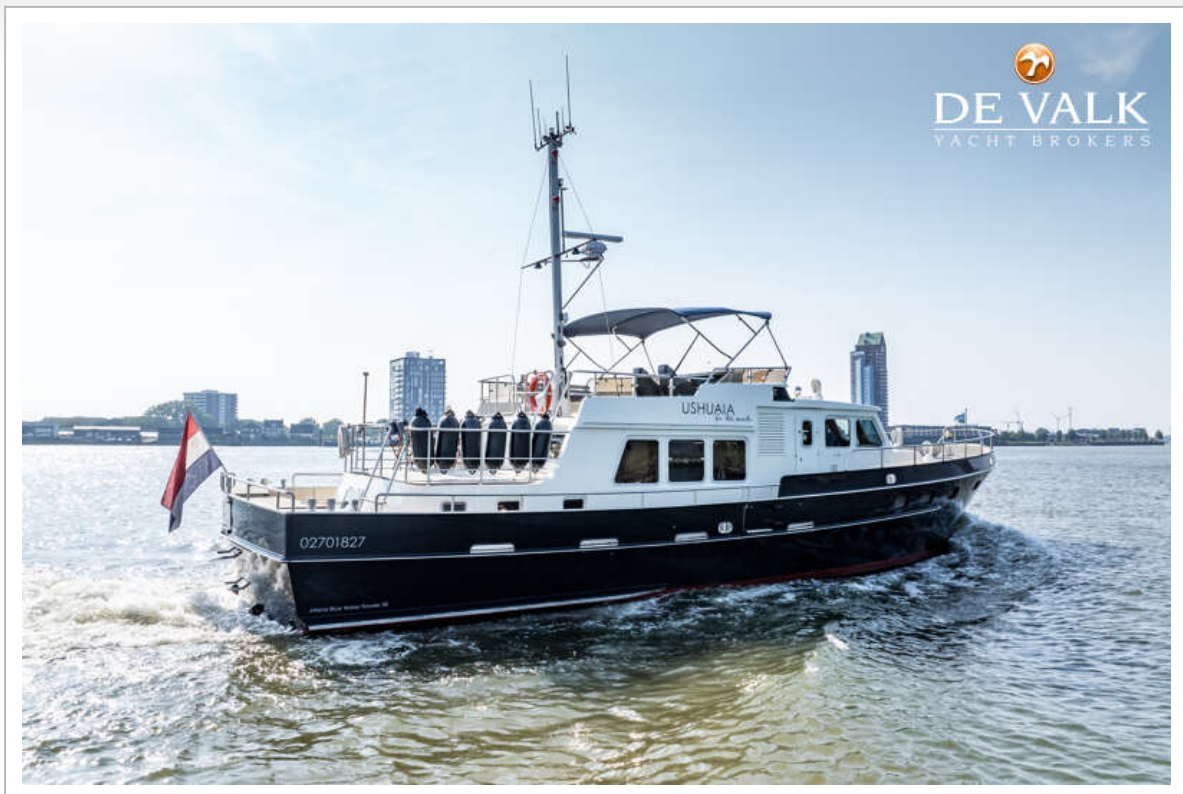
ALTENA BLUE WATER TRAWLER 58



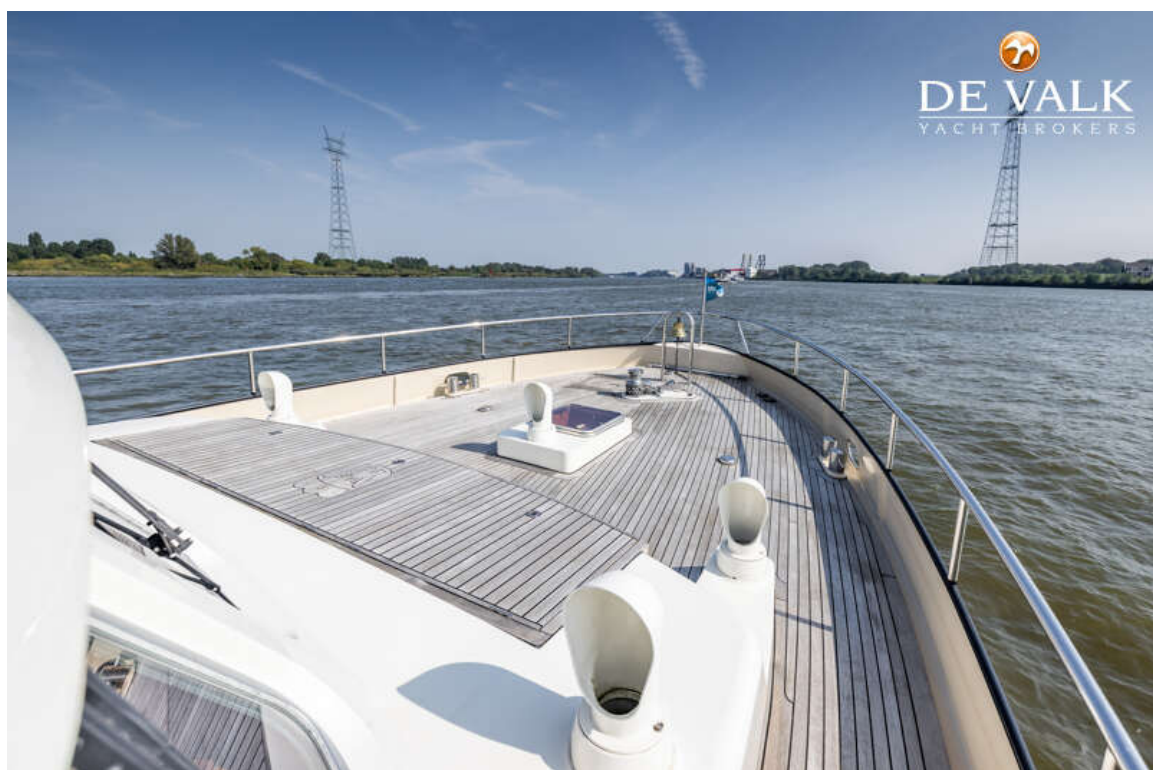
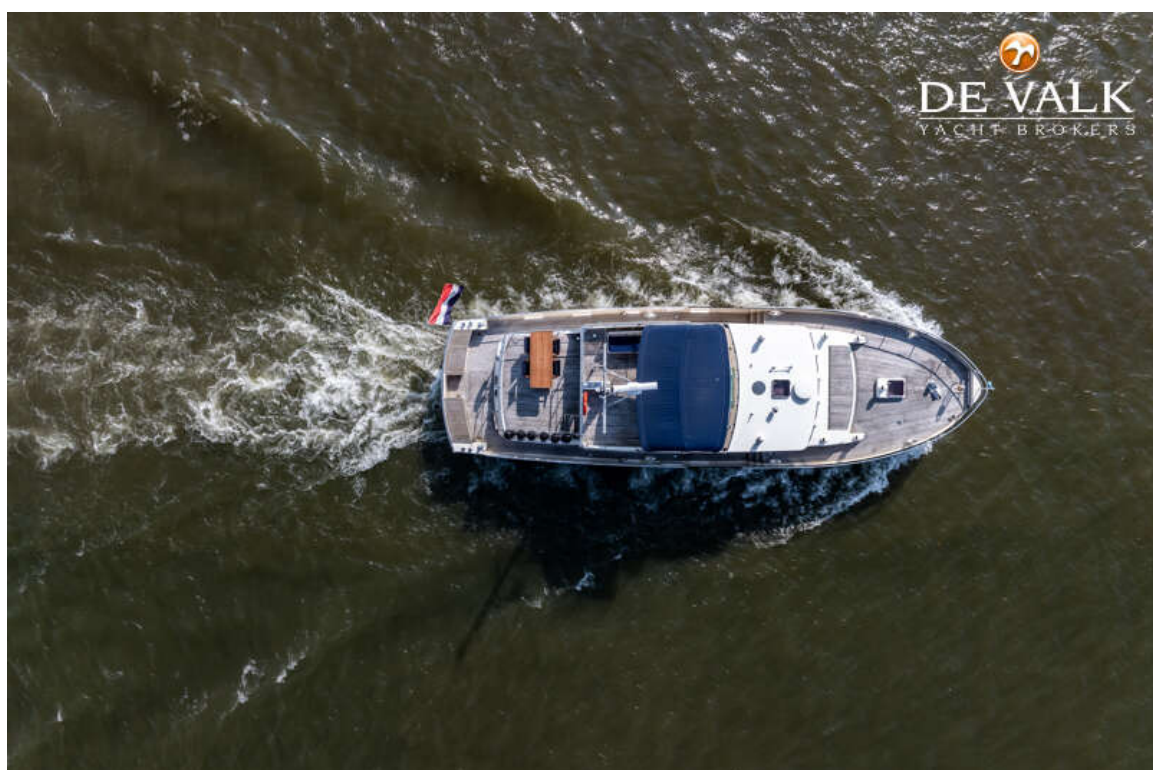
ALTENA BLUE WATER TRAWLER 58



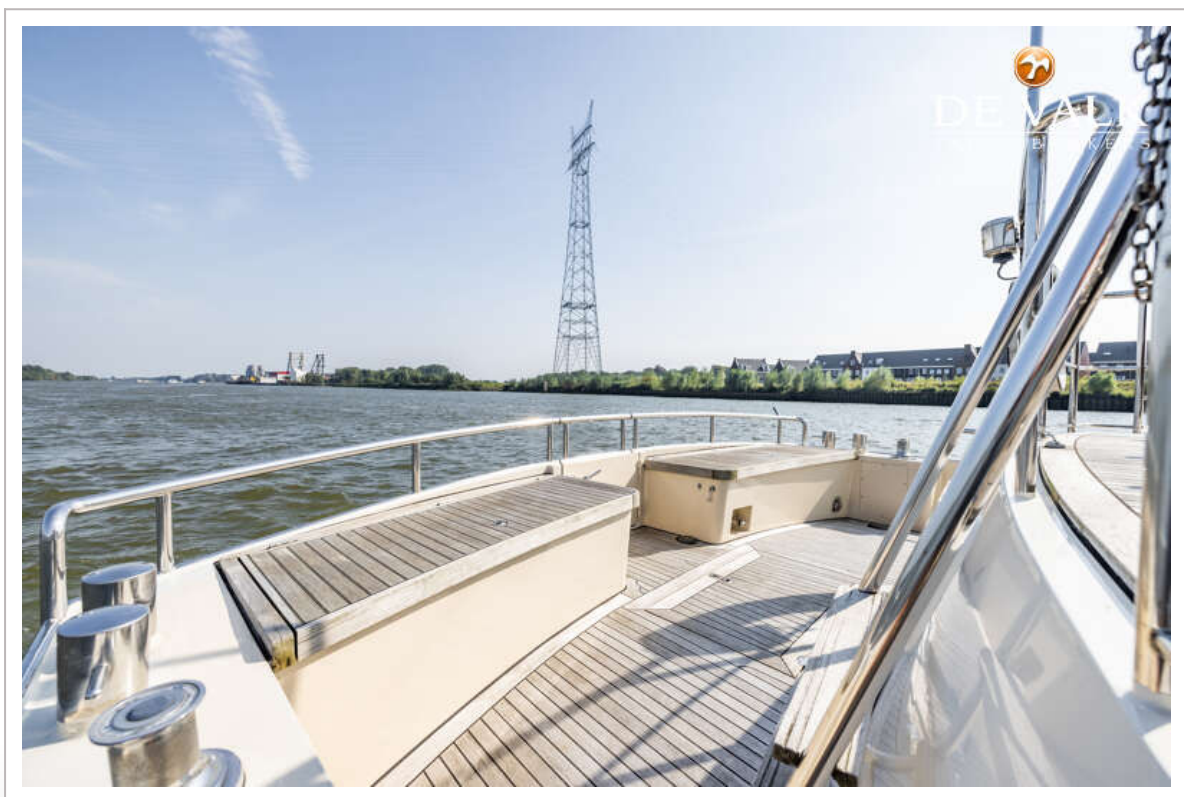
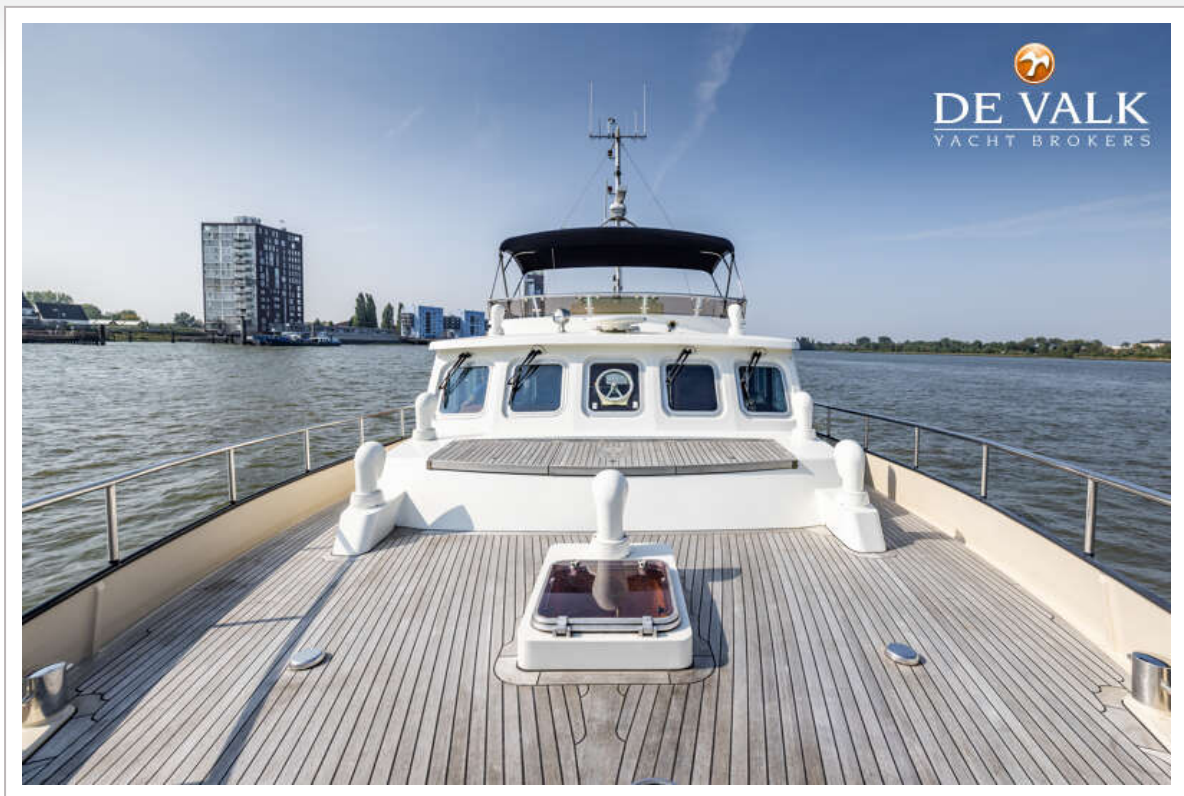
ALTENA BLUE WATER TRAWLER 58



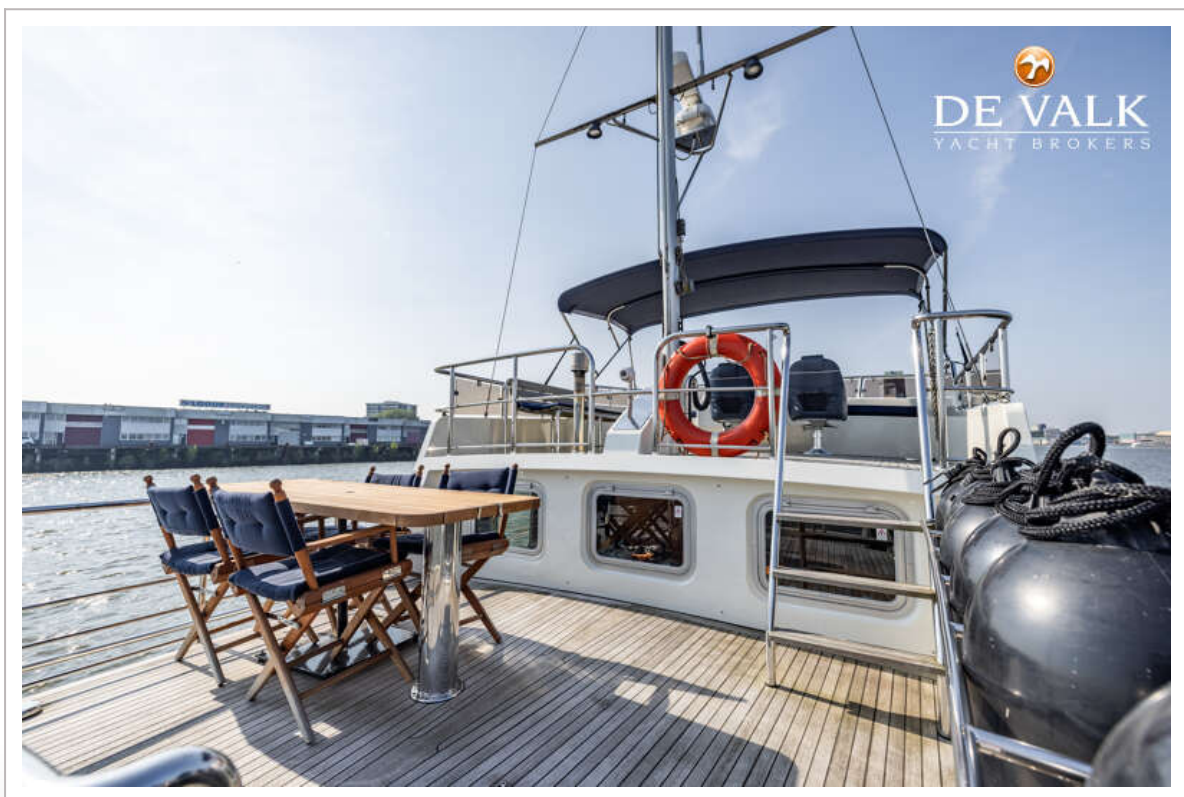
ALTENA BLUE WATER TRAWLER 58



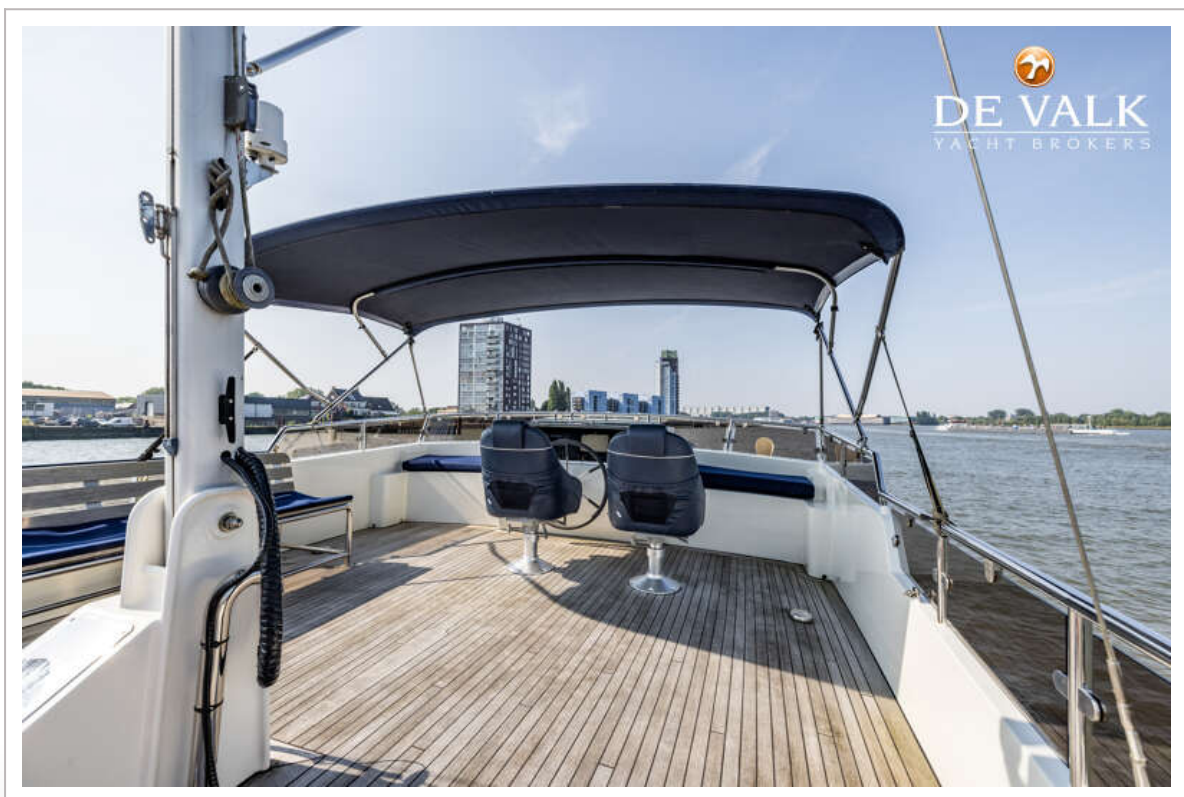
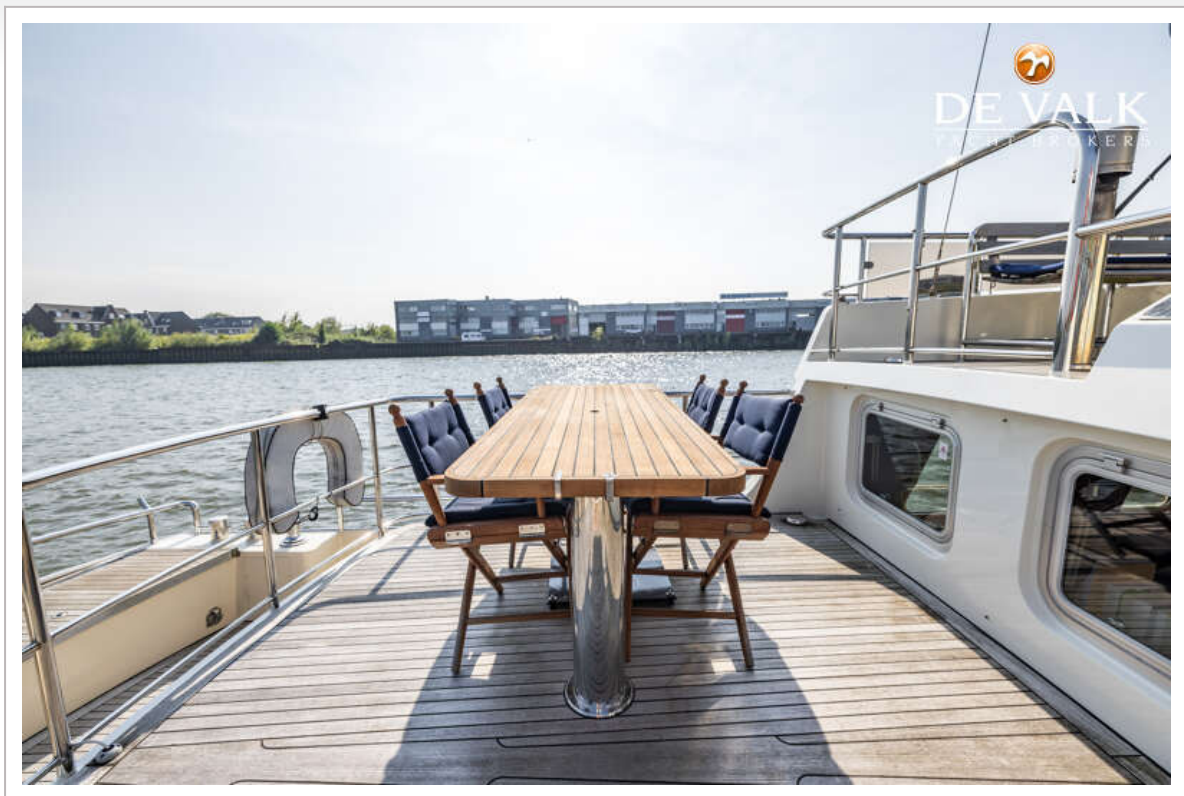
ALTENA BLUE WATER TRAWLER 58



ALTENA BLUE WATER TRAWLER 58



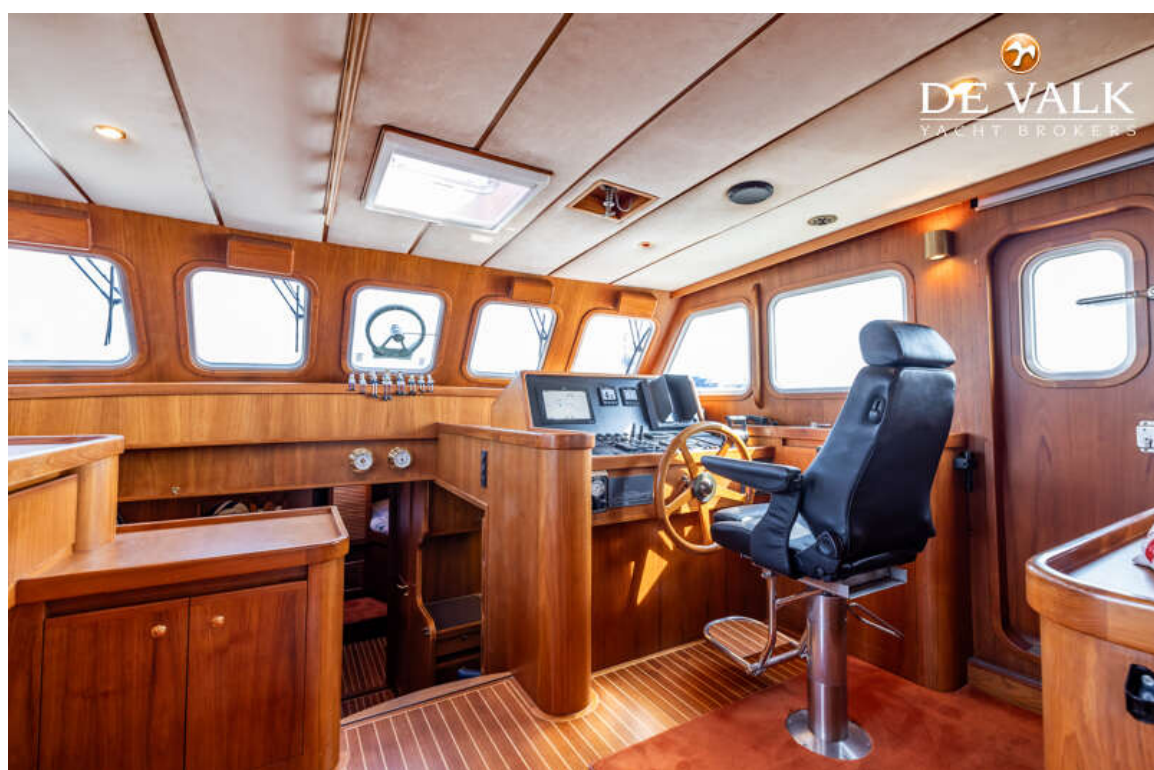
ALTENA BLUE WATER TRAWLER 58



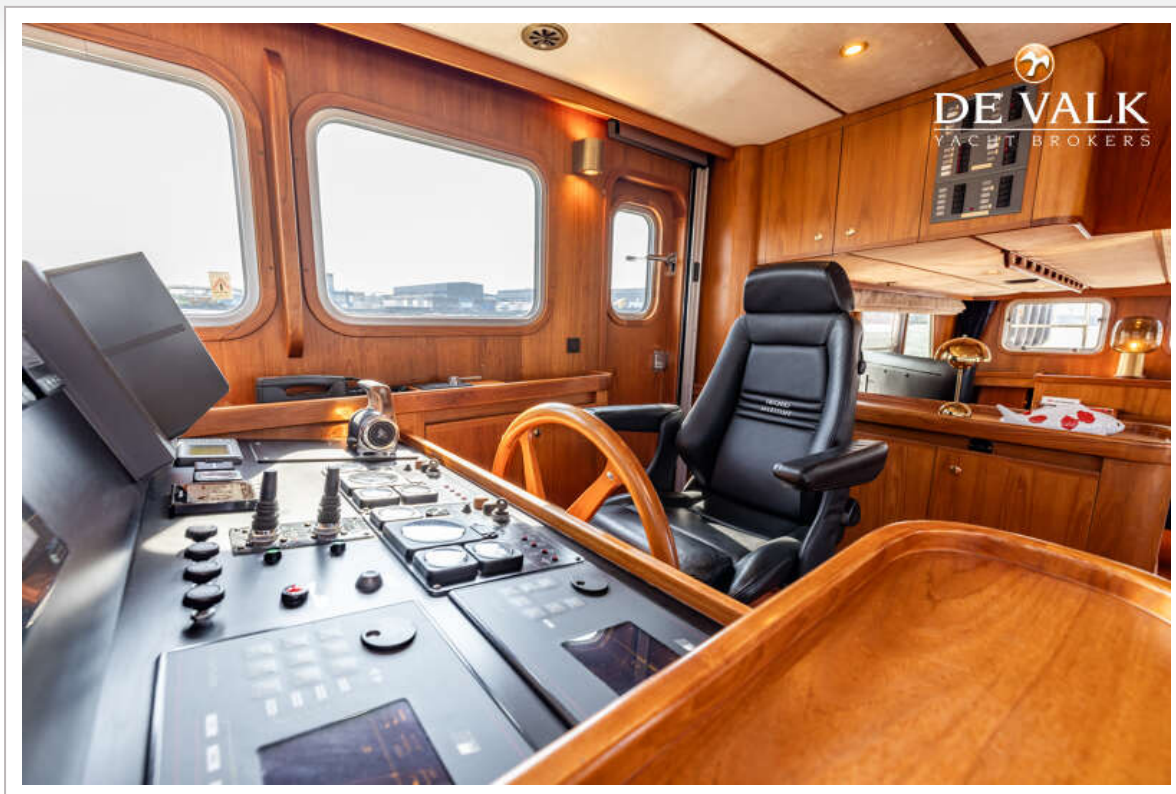
ALTENA BLUE WATER TRAWLER 58



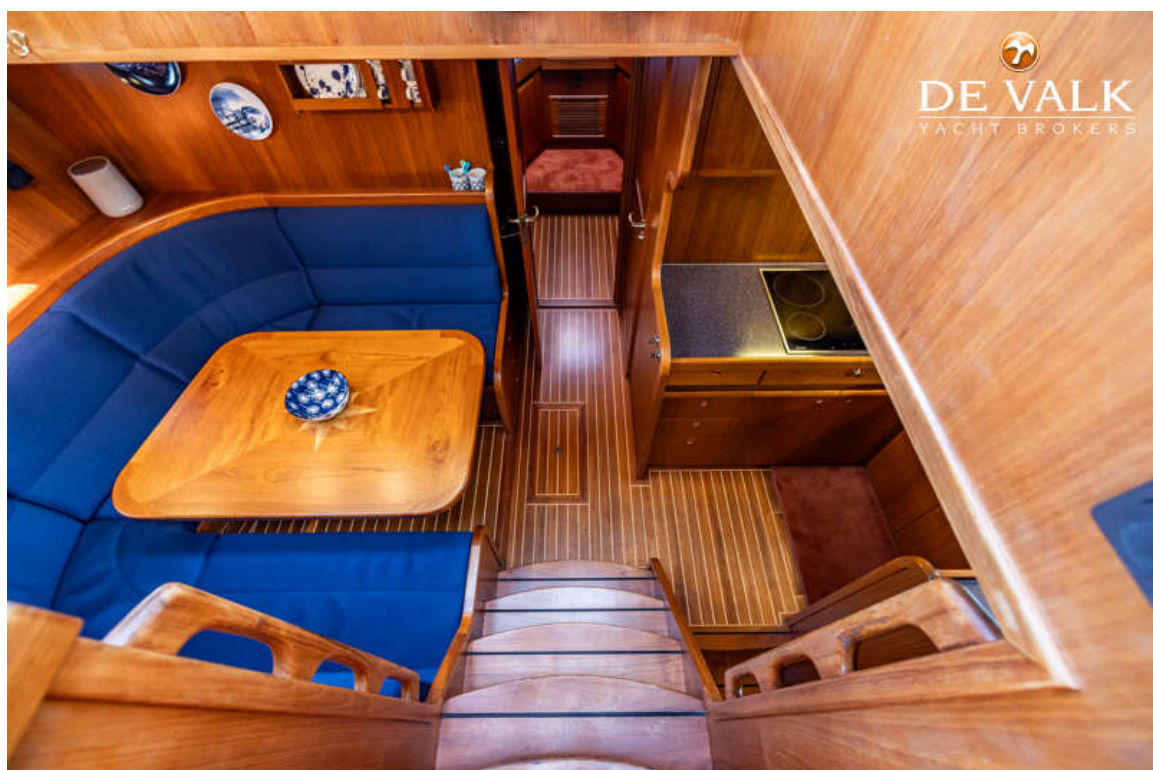
ALTENA BLUE WATER TRAWLER 58



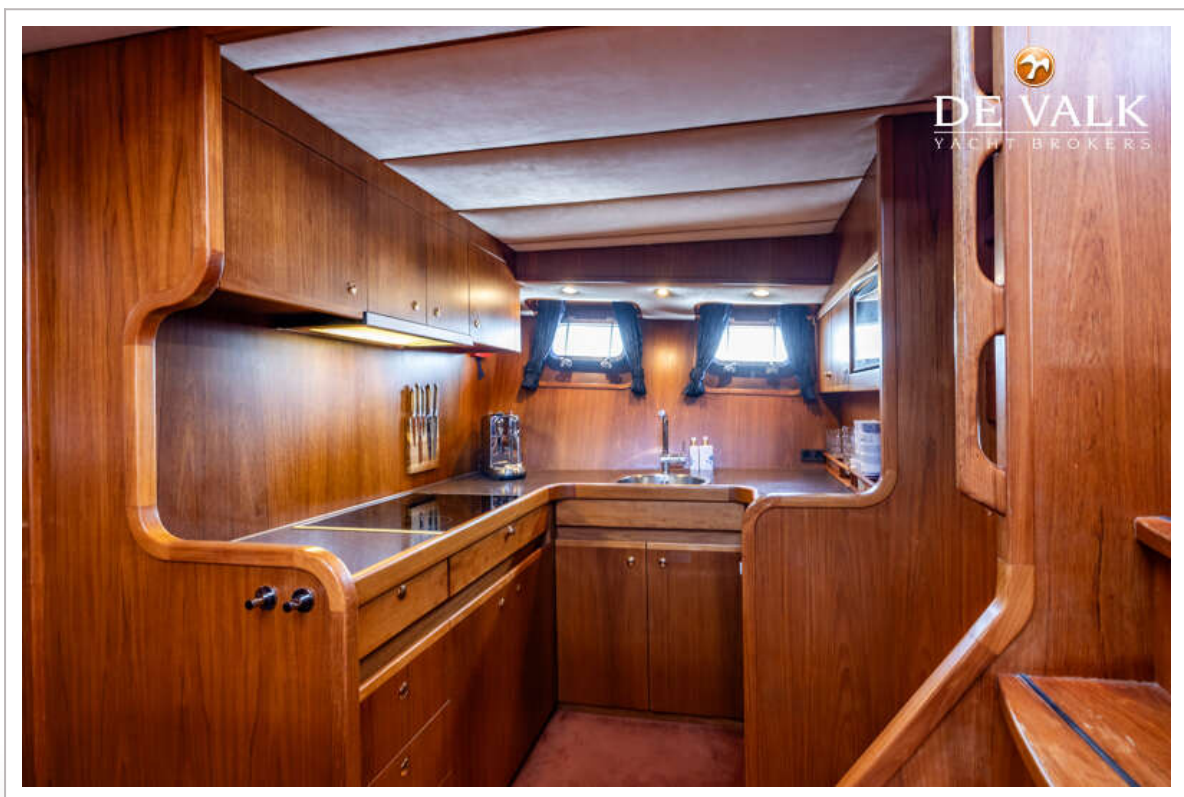
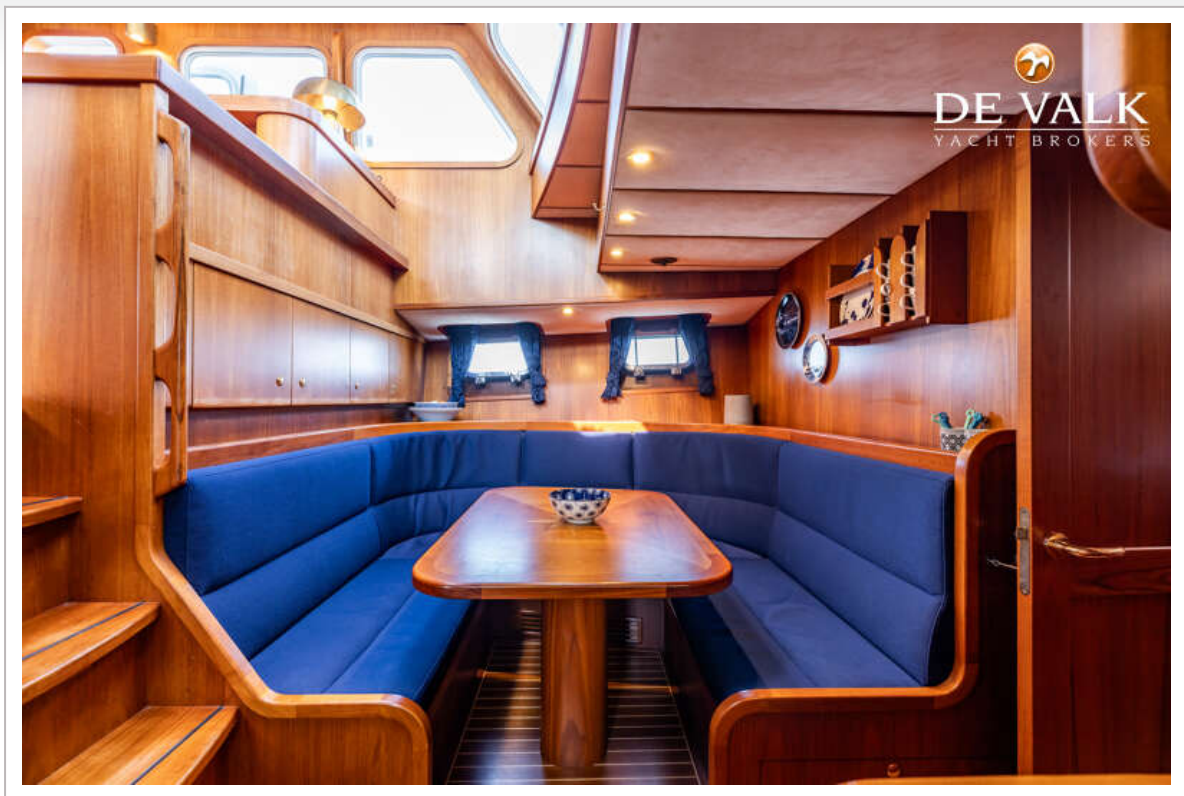
ALTENA BLUE WATER TRAWLER 58



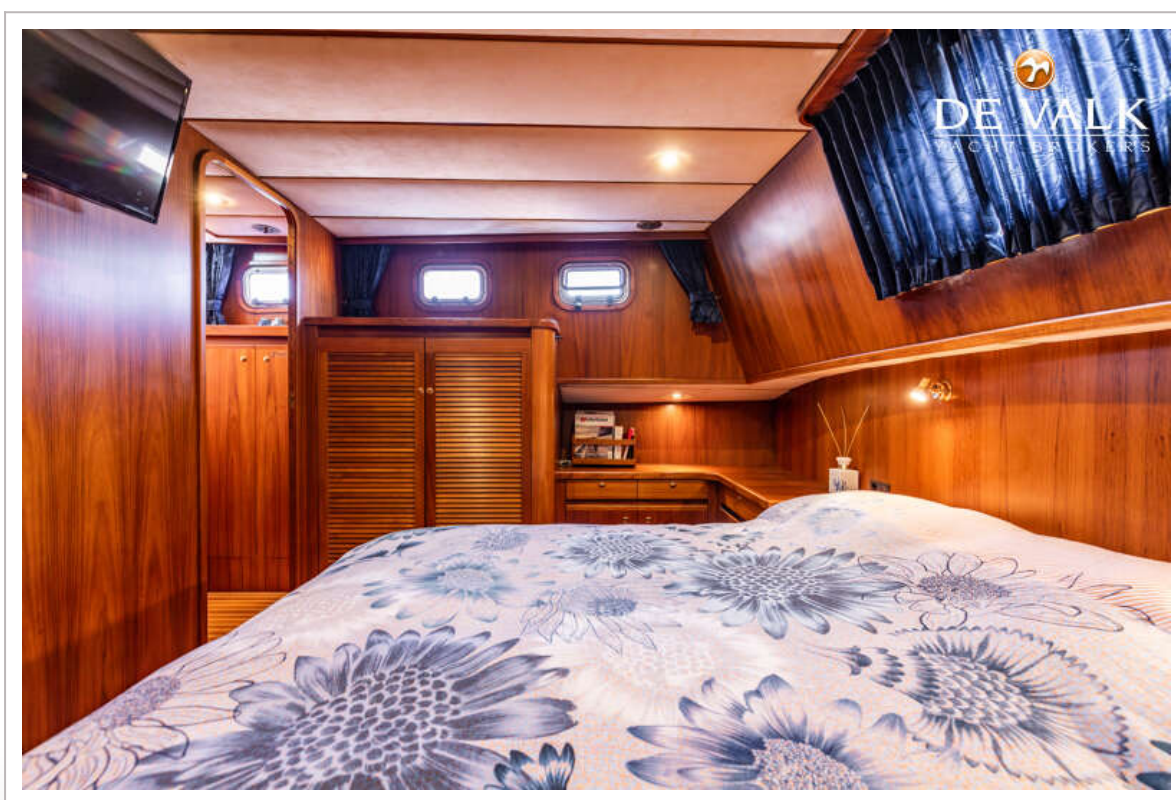
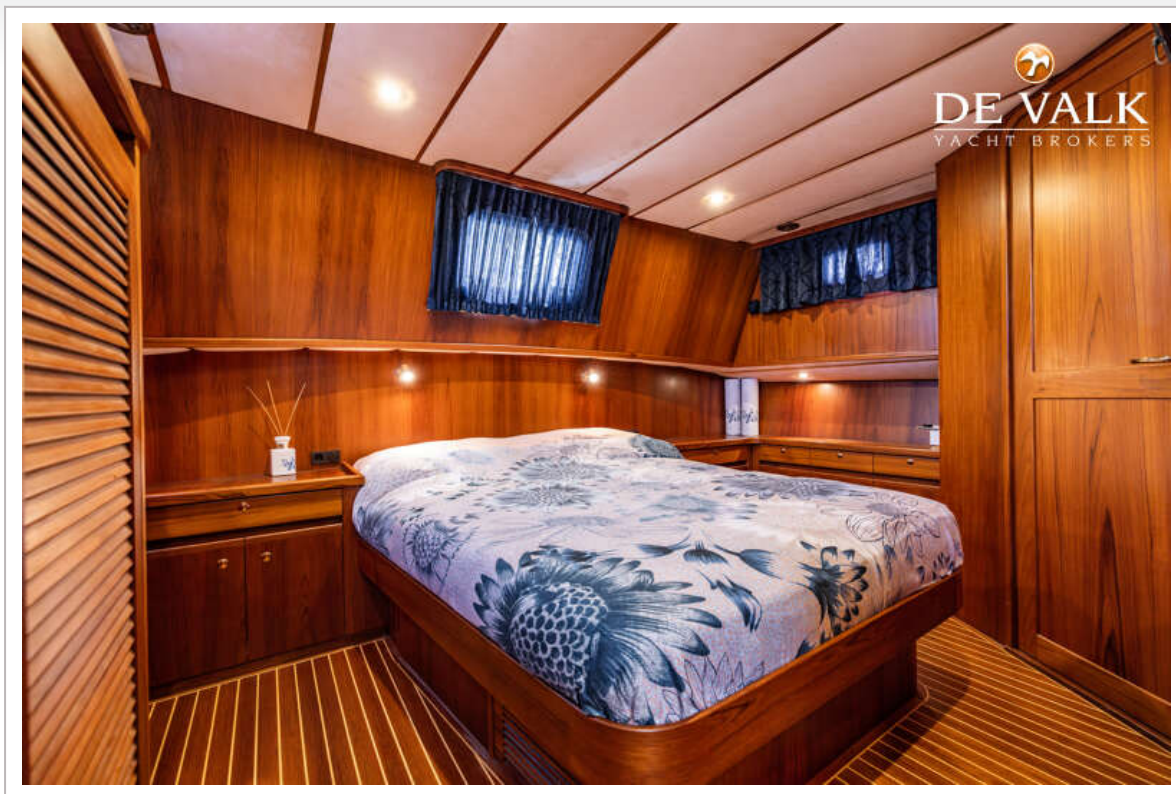
ALTENA BLUE WATER TRAWLER 58



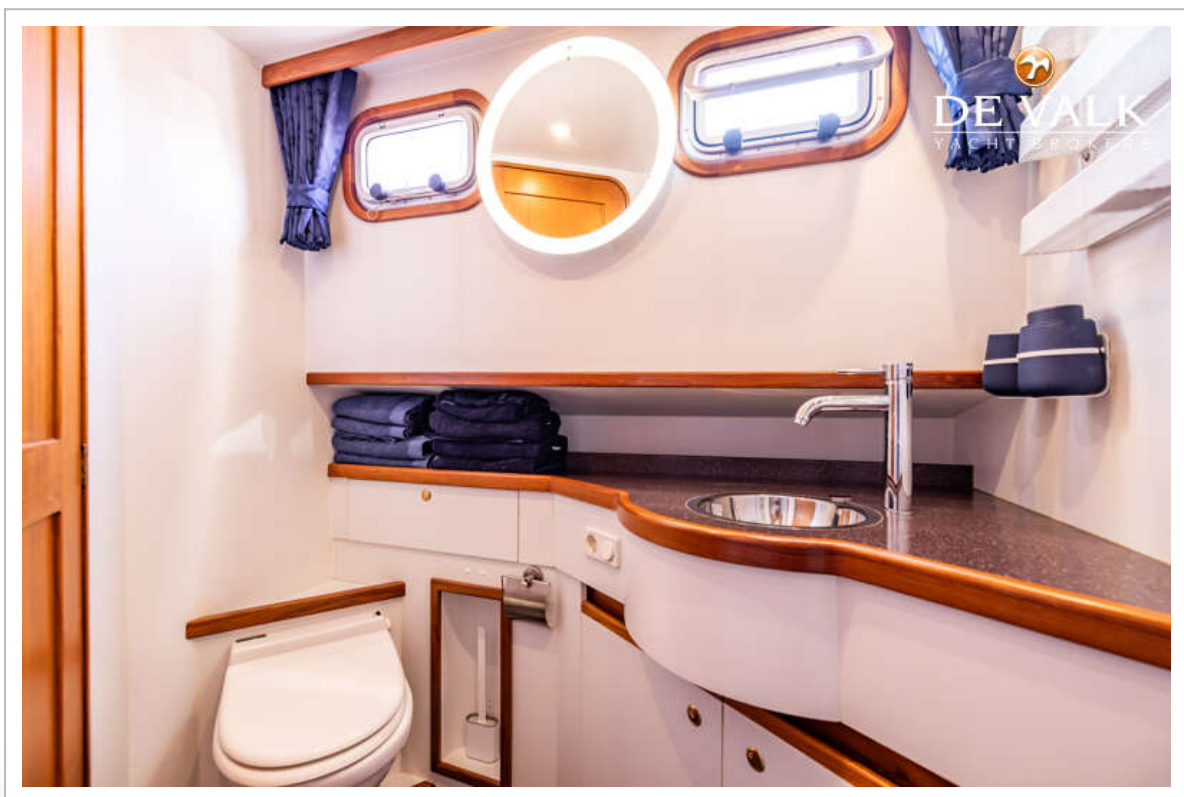
ALTENA BLUE WATER TRAWLER 58



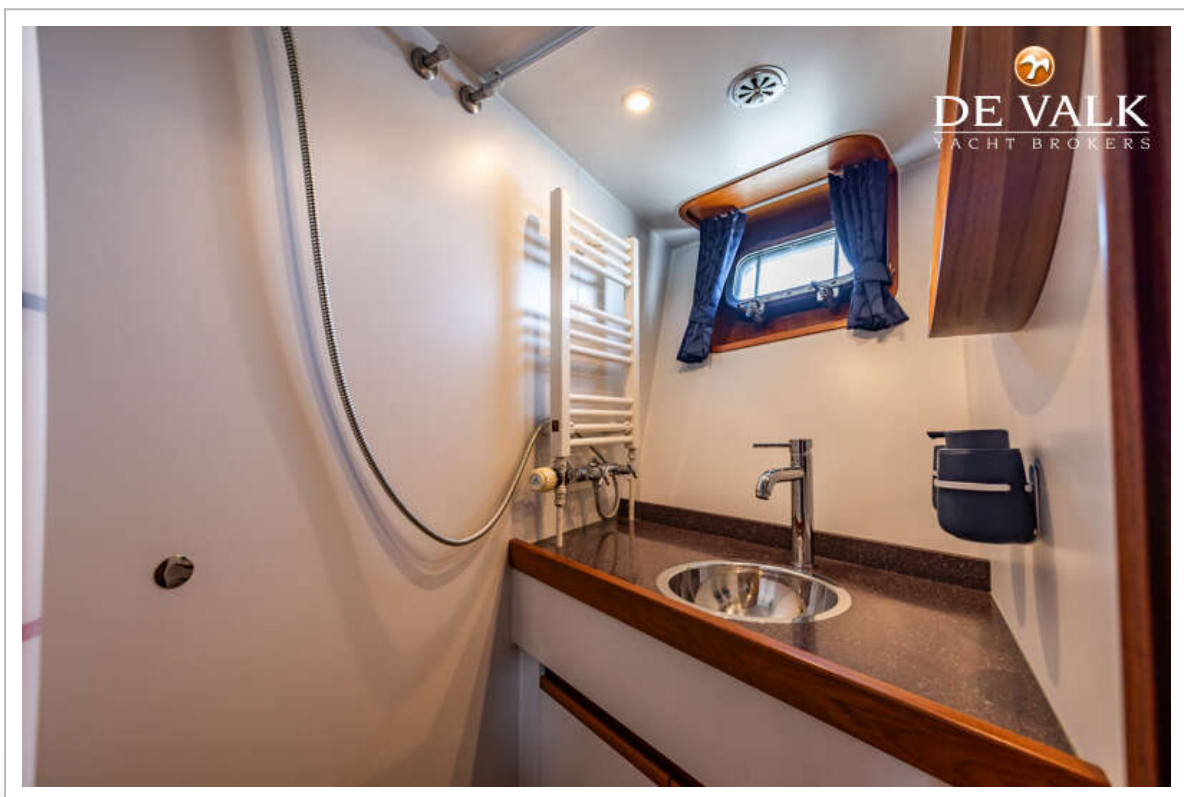
ALTENA BLUE WATER TRAWLER 58



ALTENA BLUE WATER TRAWLER 58



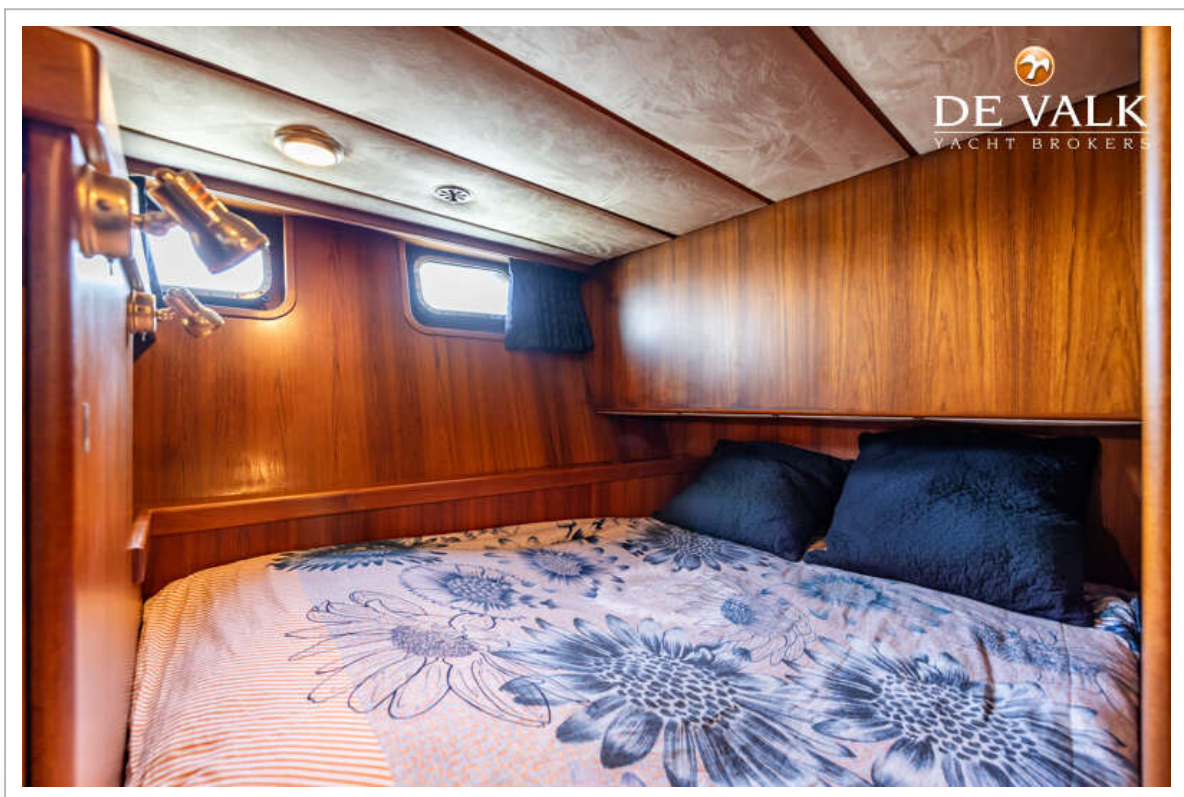
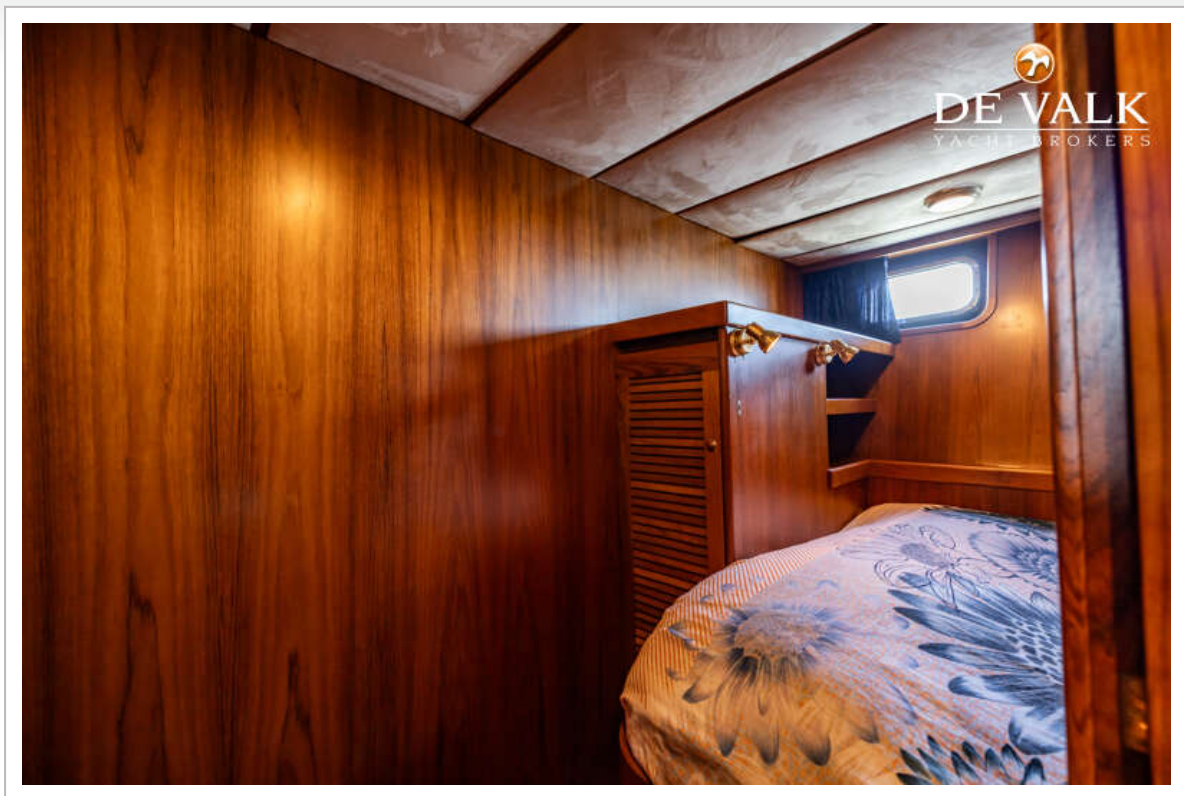
ALTENA BLUE WATER TRAWLER 58



ALTENA BLUE WATER TRAWLER 58



ALTENA BLUE WATER TRAWLER 58



ALTENA BLUE WATER TRAWLER 58

