



DE VALK  
YACHT BROKERS



## BAVARIA 37 CRUISER



DE VALK  
YACHT BROKERS

# BAVARIA 37 CRUISER

## BROKER'S COMMENTS

Bavaria 37 Cruiser "Xenia" built at Bavaria Yachtbau in 2006 and designed by J&J design. CE-A and 1.60 draft. "Xenia" will be sold by her second owner from new who kept her in good condition. Two cabin and one bathroom layout. Easy handling due her 40 HP Volvo Penta diesel engine, bowthruster, stoway mast and genua furler. Viewing possible in our sales marina in Katwoude.

*Arne Doodeman*

## SPECIFICATIONS

<b>Dimensions</b>	11.35 x 3.80 x 1.60 (m)	<b>Builder</b>	Bavaria Yachtbau GmbH, Giebelstadt
<b>Built</b>	2006	<b>Cabins</b>	2
<b>Material</b>	GRP	<b>Berths</b>	4
<b>Engine(s)</b>	1 x Volvo penta D2-40 diesel	<b>Hp/Kw</b>	40.00 (hp), 29.44 (kw)
<b>Asking price</b>	sold (VAT )	<b>Lying</b>	at sales office

## CONTACT

<b>Sales office</b>	De Valk Monnickendam B.V.	<b>Telephone</b>	+31 (0)299 65 63 50
<b>Address</b>	Hoogedijk 6 1145 PM Katwoude NL	<b>E-mail</b>	monnickendam@devalk.nl

## DISCLAIMER

These particulars are given in good faith as supplied but cannot be guaranteed.



# BAVARIA 37 CRUISER

## GENERAL

Model	BAVARIA 37 CRUISER
Type	sailing yacht
LOA (m)	11,35
LWL (m)	9,82
Beam (m)	3,80
Draft (m)	1,60
Year built	2006
Launched	Date of delivery to the first owner: 04-07-2006
Builder	Bavaria Yachtbau GmbH, Giebelstadt
Country	Germany
Designer	J&J Design
Displacement (t)	6,9
Ballast (tonnes)	1,8
CE norm	A
Hull material	GRP
Hull colour	white
Hull shape	round-bilged
Keel type	fin keel with bulb
Superstructure material	GRP
Deck material	GRP
Deck finish	non-skid moulded in
Cockpit deck finish	teak
Window frame	aluminium
Window material	polycarbonate
Deckhatch	6 x
Portholes	aluminium
Mast can be lowered	manual - Stainless steel mast with radardome. Can be lowered manual.
Fuel tank (litre)	polyethylene - Approx. 150 litres
Freshwater tank (litre)	polyethylene - Approx. 210 litres
Blackwater tank (litre)	polyethylene - Approx 80 litres



# BAVARIA 37 CRUISER

Wheel steering	cable steering
Outside helm position	yes
Emergency tiller	yes

## ACCOMMODATION

Cabins	2
Berths	4
Interior	mahogany
Floor	woodprint
Open cockpit	yes
Saloon	yes
Heating	diesel ducted hot air Webasto
Chart table	yes
Opening door to cockpit	yes
Galley	yes
Countertop	yes
Sink	stainless steel - double stainless steel sink
Cooker	calor gas 2 burner
Oven	yes
Fridge	yes
Hot water system	220V + engine - XL water heater 22L
Water pressure system	electrical
Owners cabin	v-bed
Wardrobe	drawers and shelves
Bathroom	shared
Toilet	yes
Toilet system	manual Jabsco
Wash basin	yes
Shower	- Hand shower
Guest cabin 1	double bed
Wardrobe	drawers and shelves



# BAVARIA 37 CRUISER

## MACHINERY

No of engines	1
Make	Volvo penta
Type	D2-40
HP	40
kW	29.44
Fuel	diesel
Year installed	2006
Engine cooling system	freshwater heat exchanger
Drive	sail-drive
Saildrive seal	yes
Engine controls	bowden cable
Gearbox	Saildrive: Volvo Penta 130S-B
Bowthruster	electric Lewmar TT185, 4kw, 12V (2018)
Propeller type	folding
Propeller blades	3 bladed
Manual bilge pump	- Plastimo Pump138
Electric bilge pump	yes
Start battery	1 x 60ah
Service battery	2 x 130 ah
Bowthruster battery	1 x 100ah
Battery charger	- Quick SBCC 251, 12V/25A, Victron Blue Smart charger 12V/10A
Diode battery combiners	- Sure Power Industries, Multi battery isolator model: 1202
Shorepower	with cable
Extra info	- Delphi fuelfilter

## NAVIGATION

Compass	Plastimo Olympic 135 liquid compass
Depth sounder/log	Raymarine ST60+ tridata
Windset	Raymarine ST60+ Wind



# BAVARIA 37 CRUISER

VHF	Raymarine Ray 240
Autopilot	Raymarine ST6002
Rudder angle indicator	In the screen of the autopilot
Radar	Raymarine
Radar/GPS/plotter	Raymarine C70
Extra info	Radiotelex Weatherman

## EQUIPMENT

Sprayhood	yes
Winter cover	to close the cockpit
Cockpit table	yes
Bathing platform	yes
Boarding ladder	stainless steel
Transom door	yes
Deck shower	yes
Anchor	15 KG
Anchor chain	Galvanized chain
Windlass	electrical Lewmar
Sea railing	wire
Grab rail (superstructure)	stainless steel
Pushpit	yes
Pulpit	yes
Life raft	Need service
Fenders	yes
Mooring lines	yes
TV	LG Flattron tv
Radio	Sangean
Radio-cd player	Pioneer DEH-3700 MP

## RIGGING

Rigging	sloop
---------	-------



# BAVARIA 37 CRUISER

<b>Standing rigging</b>	wire
<b>Brand mast</b>	Seldén
<b>Material mast</b>	aluminium
<b>Spreaders</b>	- 2 spreaders
<b>Mainsail</b>	yes
<b>Stoway mast</b>	yes
<b>Genoa</b>	yes
<b>Genoa furler</b>	Furlex 200S
<b>Genoa cover</b>	yes
<b>Reefing System</b>	main in-mast furling
<b>Boomvang</b>	mechanical and tackle Selden
<b>Primary sheet winch</b>	- Lewmar 30
<b>Genoa sheetwinches</b>	- Lewmar 40



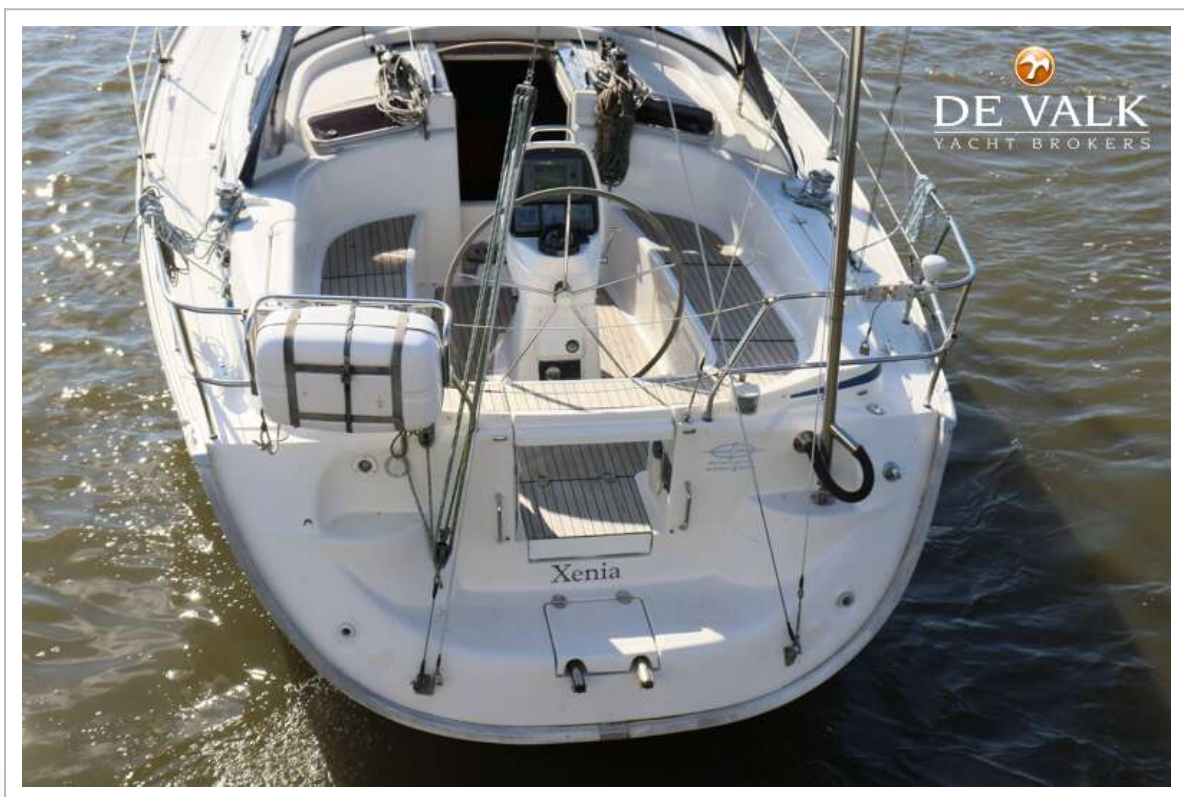
# BAVARIA 37 CRUISER



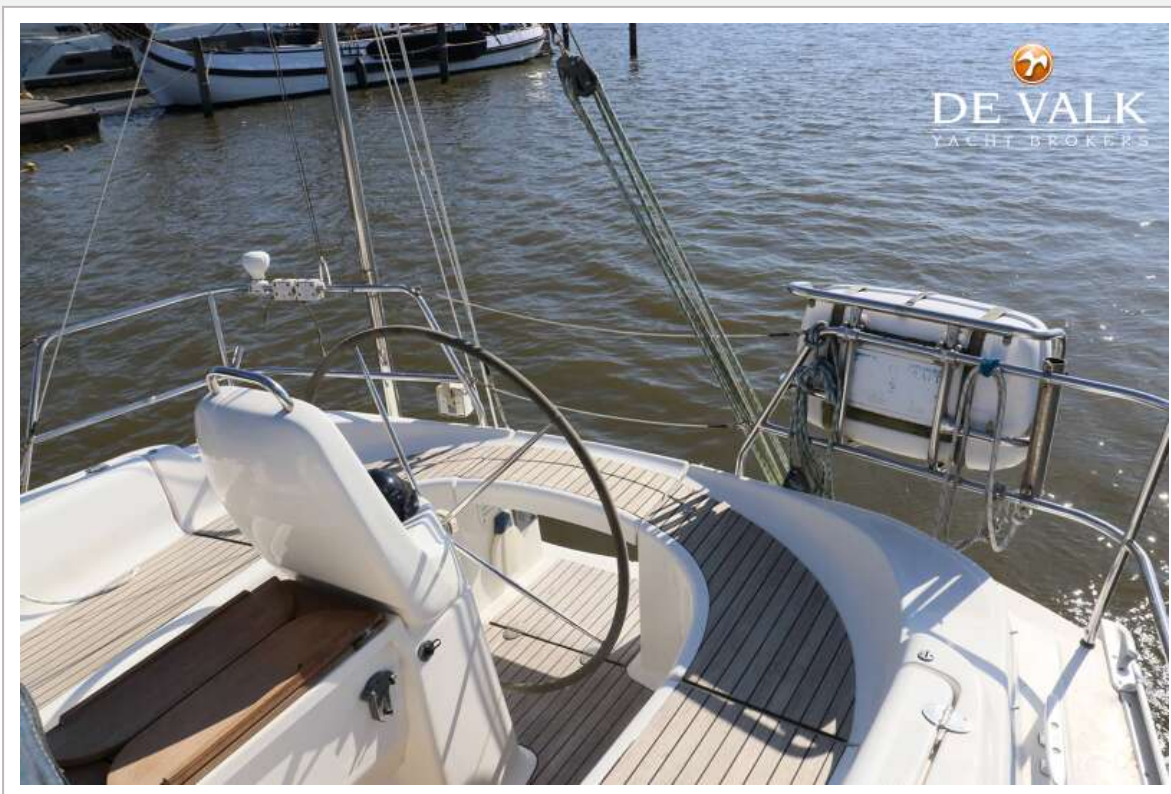
# BAVARIA 37 CRUISER



# BAVARIA 37 CRUISER



# BAVARIA 37 CRUISER



# BAVARIA 37 CRUISER



# BAVARIA 37 CRUISER



# BAVARIA 37 CRUISER



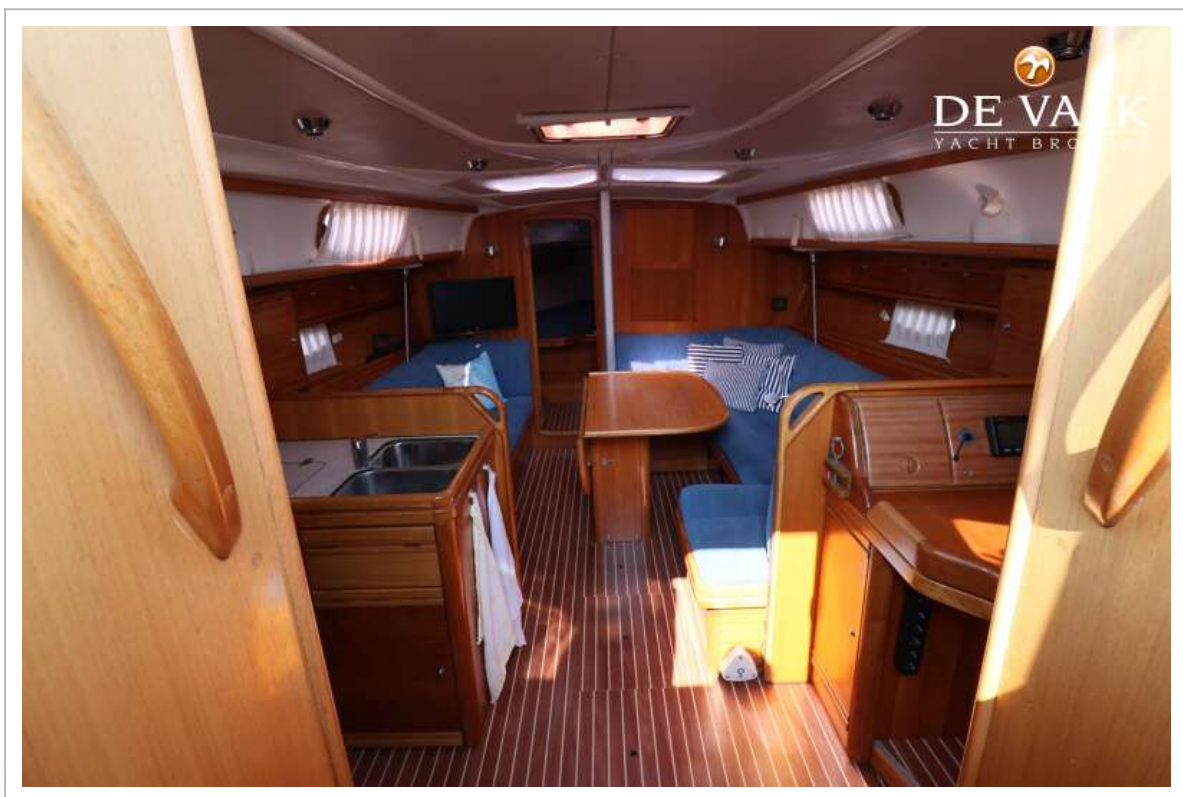
# BAVARIA 37 CRUISER



# BAVARIA 37 CRUISER



# BAVARIA 37 CRUISER



# BAVARIA 37 CRUISER



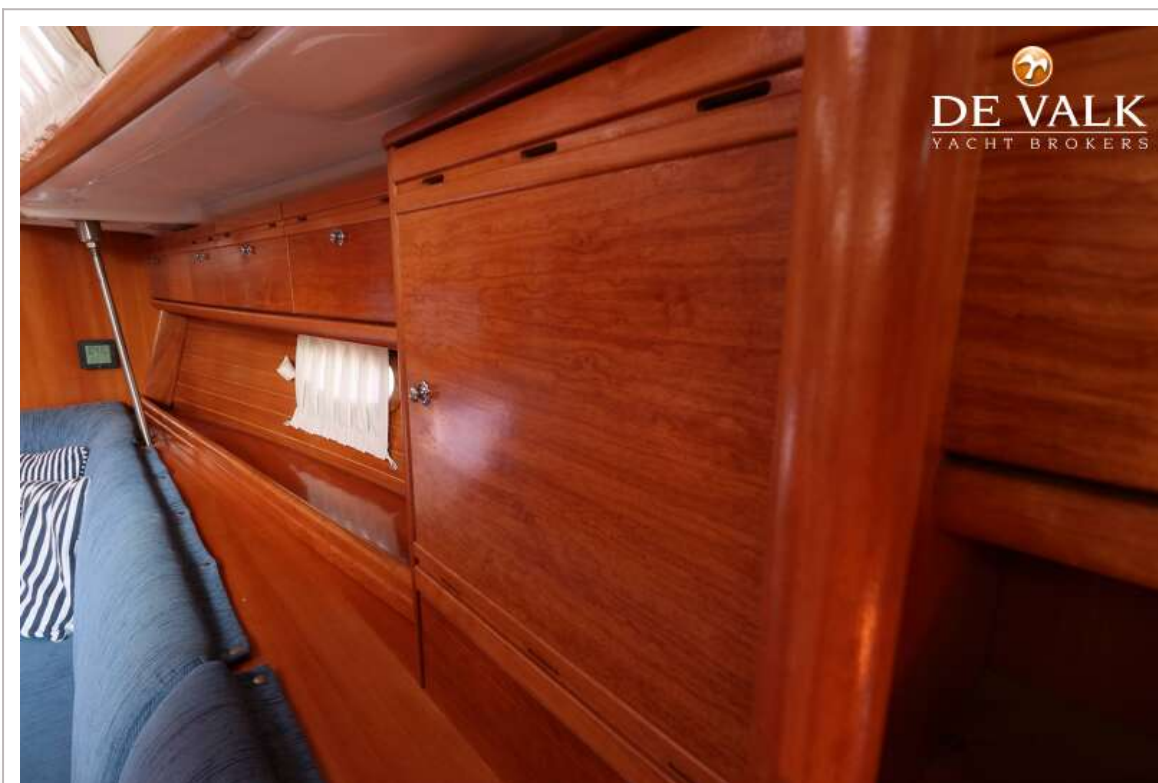
# BAVARIA 37 CRUISER



# BAVARIA 37 CRUISER



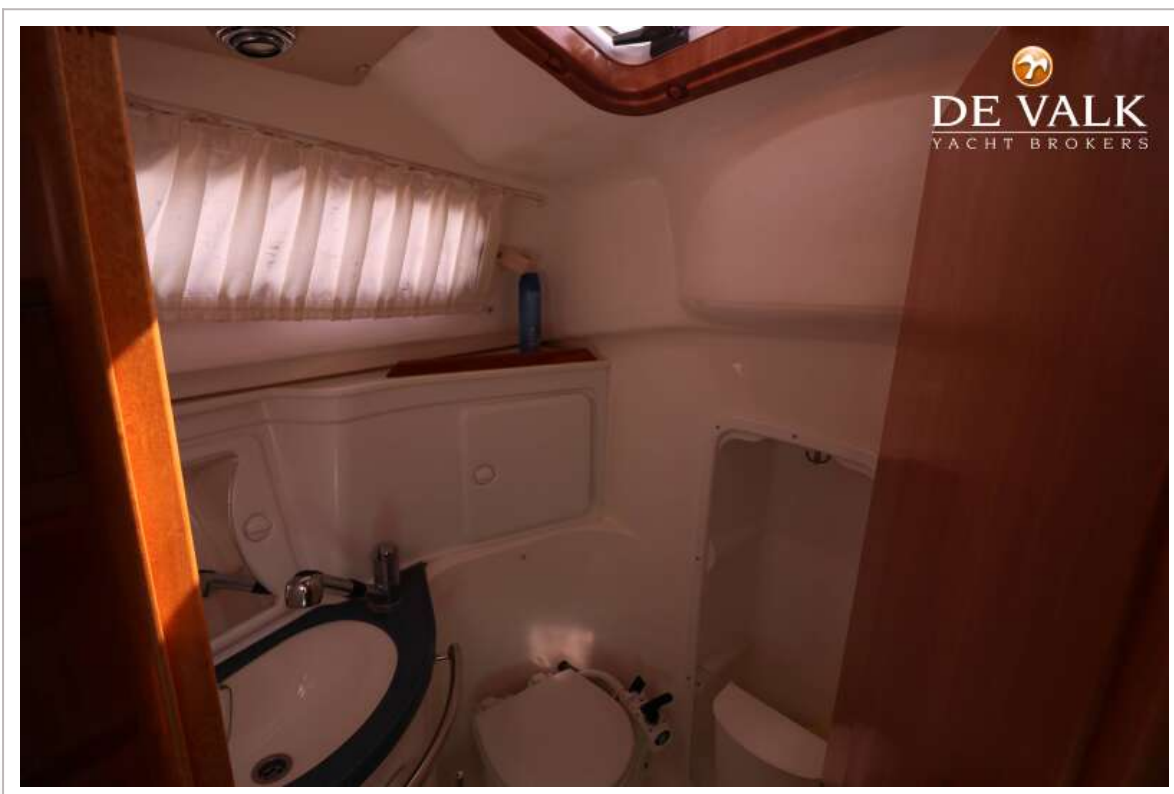
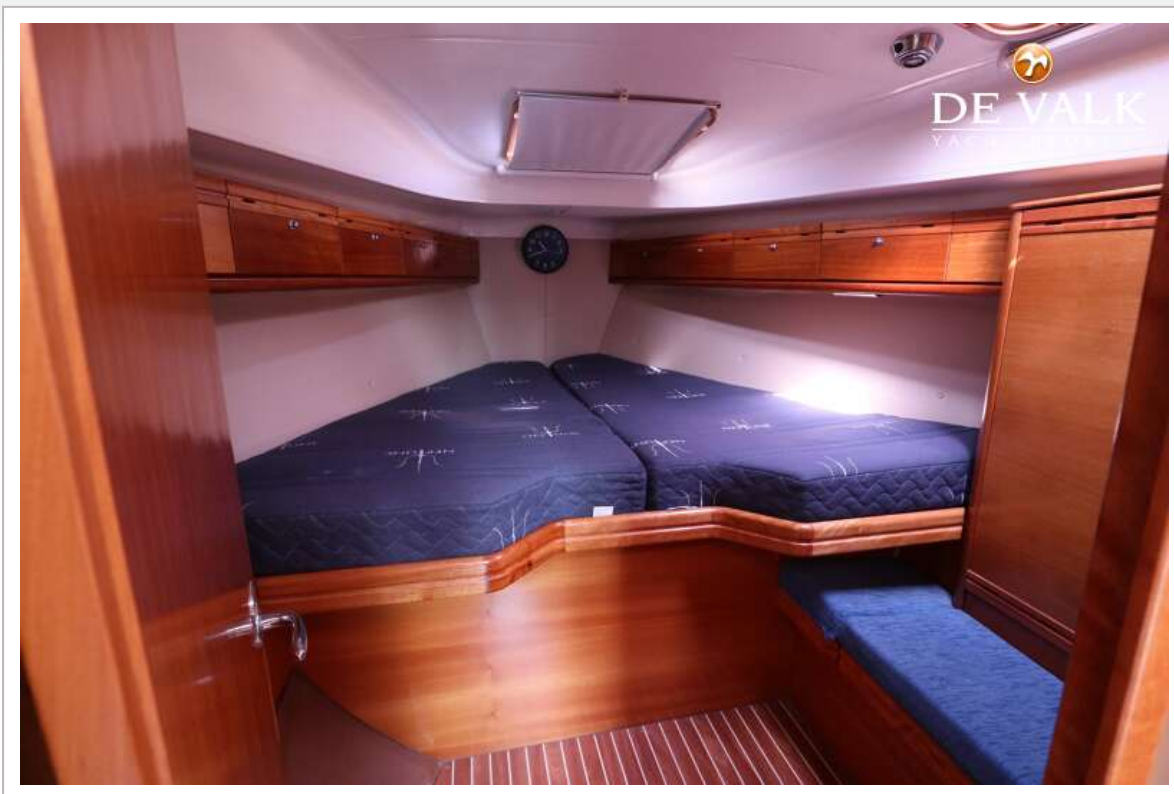
# BAVARIA 37 CRUISER



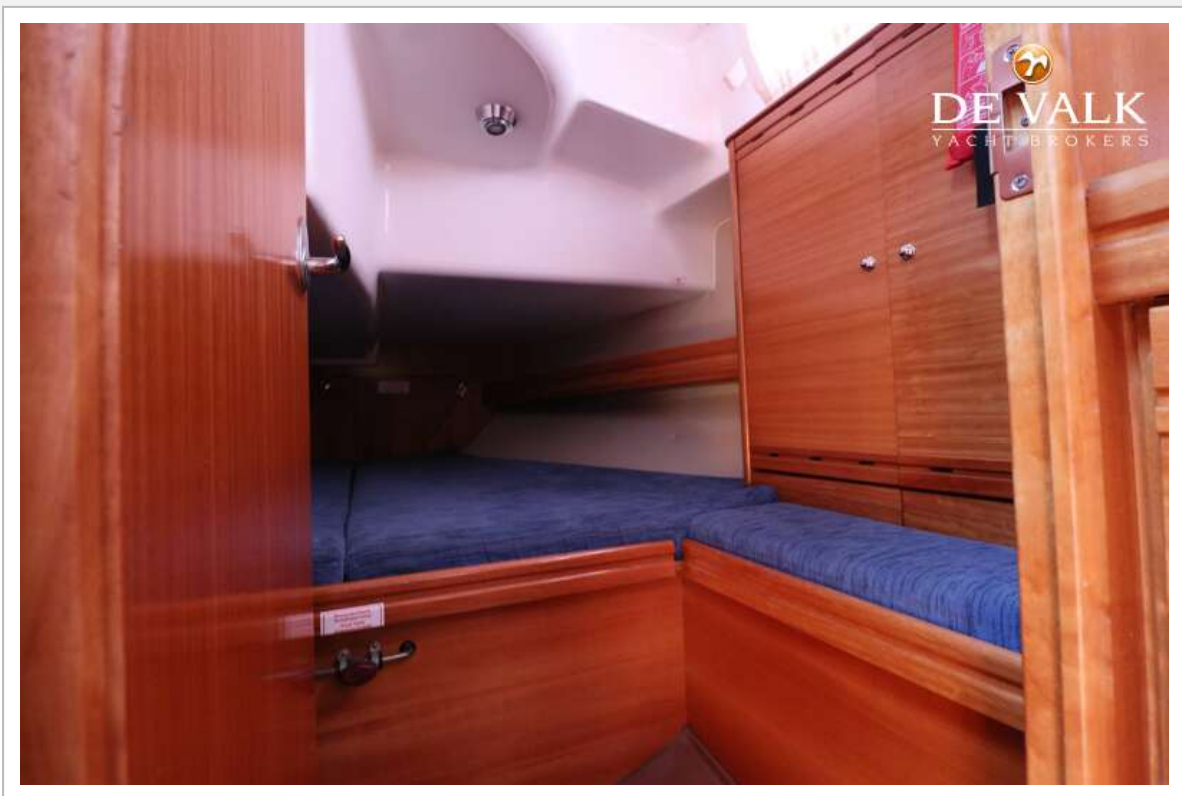
# BAVARIA 37 CRUISER



# BAVARIA 37 CRUISER



# BAVARIA 37 CRUISER



# BAVARIA 37 CRUISER

