



NAUTITECH 46 FLY



NAUTITECH 46 FLY

BROKER'S COMMENTS

Remarkable Nautitech 46 Fly 3 cabin owner's version in almost like new condition. This superb flybridge model with fixed hardtop and her 360 panoramic view is a joy to relax and sail at day and night. Engine hours of 400 tell you a very light usage and that shows everywhere, very neat outside and inside, fresh as almost factory new. Nice B&G package, generator, water maker and aircon's complete the list of extra's you wish for. Easy to sail in-mast main and self tacking jib for relaxed cruising, the Code zero can bring excitement at moments you choose. Fully serviced and ready to go!

Willem Koopmans

SPECIFICATIONS

Dimensions	13.79 x 7.54 x 1.45 (m)	Builder	Bavaria Yachtbau GmbH
Built	2017	Cabins	3
Material	GRP	Berths	6
Engine(s)	2 x Volvo D2-50F diesel	Hp/Kw	2 x 50.00 (hp), 36.80 (kw)
Asking price	sold (VAT)	Lying	contact sales office

CONTACT

Sales office	De Valk Costa Blanca	Telephone	+34 96 50 21 569
Address	Costa Blanca Region 03730 Javea Alicante ES	E-mail	costablanca@devalk.nl

DISCLAIMER

These particulars are given in good faith as supplied but cannot be guaranteed.



GENERAL

Model	NAUTITECH 46 FLY
Type	catamaran sailing yacht
LOA (m)	13,79
LWL (m)	13,71
Beam (m)	7,54
Draft (m)	1,45
Headroom (m)	2,10
Year built	2017
Launched	2018
Builder	Bavaria Yachtbau GmbH
Country	Germany
Designer	Marc Lombard
Displacement (t)	11,4
CE norm	A
Hull material	GRP
Hull colour	off-white
Hull shape	round-bilged Catamaran
Keel type	fin keel
Superstructure material	GRP
Deck material	GRP
Deck finish	non-skid moulded in
Superstructure deck finish	non-skid moulded in
Cockpit deck finish	teak
Antifouling (year)	2024
Window material	tempered glass
Flybridge	yes
Flybridge cover	Over instruments
Flybridge suncover	yes
Fuel tank (litre)	300
Fuel tank 2 (litre)	300



Level indicator (fuel tank)	yes
Freshwater tank (litre)	2 x 300
Level indicator (freshwater)	yes
Blackwater tank (litre)	yes
Wheel steering	yes
Flybridge helm position	yes
Emergency tiller	yes
Extra info	Flybridge with fixed sun cover
Extra info	Fixed sun cover with light panel, also red light for navigation.
Extra info	Private owner version, no charter

ACCOMMODATION

Cabins	3
Berths	6
Crew cabin	Possible in front
Interior	oak Light
Layout	Owners version
Floor	woodprint Dark oak
Open cockpit	yes
Deck saloon	yes
Headroom saloon (m)	2,1
Heating	Webasto A6 Compact, 230 V
Air-conditioning	In all cabins
Navigation center	yes
Chart table	yes
Aft Cabin	yes
Dinette	yes
Sliding door to cockpit	yes
Galley	yes
Countertop	Duropol White
Sink	stainless steel Double



Cooker	calor gas 3 burner
Oven	yes
Fridge	3 x
Freezer	In one of the fridges
Hot water system	220V + engine
Water pressure system	electrical Plus water tap with filter
Owners cabin	double bed With Neptune matrass
Bed length (m)	2,1
Wardrobe	hanging and shelves
Bathroom	en suite
Toilet	en suite
Toilet system	electric Fresh water
Wash basin	in the bathroom
Shower	en suite Separate shower cabin
Guest cabin 1	double bed Room with a view
Bed length (m)	2,1
Wardrobe	hanging and shelves
Bathroom	en suite
Toilet	en suite
Toilet system	electric Fresh water
Wash basin	in the bathroom
Shower	en suite In separated shower cabin
Guest cabin 2	double bed
Bed length (m)	2,1
Wardrobe	hanging and shelves
Bathroom	en suite
Toilet	en suite
Toilet system	manual Salt water
Wash basin	in the bathroom
Shower	In separated shower cabin
Extra info	In front of guest cabin 2 enormous storage
Crew cabin(s)	Is possible, not foreseen



Washing machine	SOBA Babynova 1000
Flybridge	With fixed hardtop

MACHINERY

No of engines	2
Make	Volvo
Type	D2-50F
HP	50
kW	36.80
Fuel	diesel
Year installed	2018
Maximum speed (kn)	9
Cruising speed (kn)	7
Consumption (l/hr)	5
Engine hours	400, approx.
Engine cooling system	freshwater heat exchanger
Drive	sail-drive
Engine controls	electrical & bowden cable
Propeller type	folding
Propeller blades	2
Manual bilge pump	yes
Electric bilge pump	yes
Electrical installation	12/228
Generator	Whisper Power
Start battery	2021
Service battery	2021
Generator battery	yes
Battery charger	Victron Blue Power Charger, 12 V/30 Amp/3 outputs
Inverter	Victron Phoenix Inverter Smart, 12/2000
Battery charger/inverter	Victron Phoenix Inverter Smart, 230 V, 12 V/3000/120
Solar panel	4 x



Shorepower	yes
Watermaker	Ecosystems pro S 90, needs service check
Extra info	Sb engine computer replaced, showing 140 hrs less.
Extra info	yes

NAVIGATION

Compass	Plastimo Olympic 95
Compass on flybridge	yes
Electric compass	On pilot
Multi control display	B&G
VHF	B&G
Autopilot	B&G with new hydraulic pump
Rudder angle indicator	B&G
Radar/GPS	B&G 2 x 9 inch Vulcan
AIS transponder	B&G
Camera	Glomex system for home & one on B&G
Navigation lights	yes

EQUIPMENT

Fixed hardtop	yes
Winter cover	For cockpit
Cockpit cushions	yes
Cockpit table	yes
Cockpit chairs	yes
Bathing platform	yes
Boarding ladder	stainless steel
Deck shower	2 x warm/cold
Anchor	yes
Anchor chain	70 mtr
Chain counter	yes
Windlass	yes



Deck wash	yes
Dinghy	Highfield
Outboard	Honda 20
Davits	yes
Davits controls	manual
Sea railing	yes
Life raft	container
Life raft (pers)	6
Last life raft survey	2021
Fenders	yes
Mooring lines	yes
Spare parts	yes
TV	yes
Radio	Fusion
iPod connection	yes
Cockpit speakers	Cockpit and fly
Speakers in salon	yes
Fire extinguisher	yes

RIGGING

Rigging	fractional
Standing rigging	wire
Material mast	aluminium
Spreaders	2
Mainsail	yes
Fully battened mainsail	yes
Stoway mast	yes
Jib	Self tacking
Code Zero	Only used 3 times
Boomvang	yes
Primary sheet winch	yes



Secondary sheet winch	yes
Multifunctional winches	Electrical



NAUTITECH 46 FLY



NAUTITECH 46 FLY



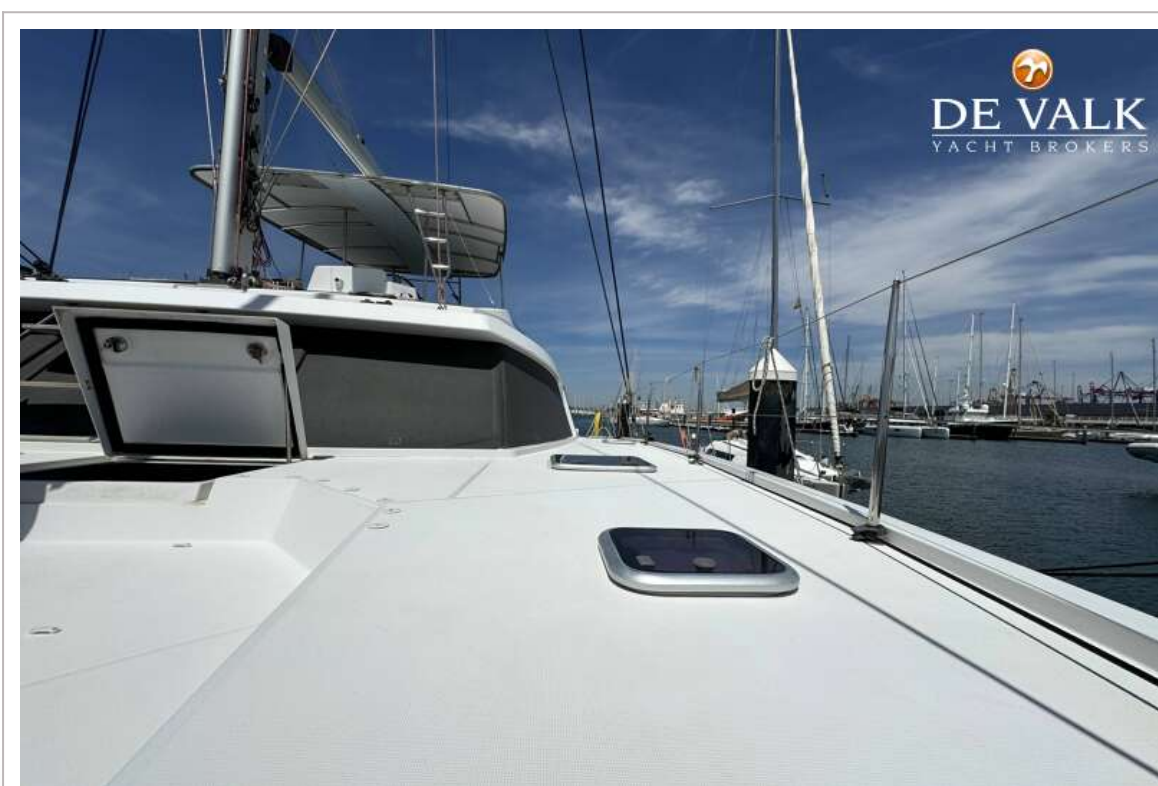
NAUTITECH 46 FLY



NAUTITECH 46 FLY



NAUTITECH 46 FLY



NAUTITECH 46 FLY



NAUTITECH 46 FLY



NAUTITECH 46 FLY



NAUTITECH 46 FLY



NAUTITECH 46 FLY



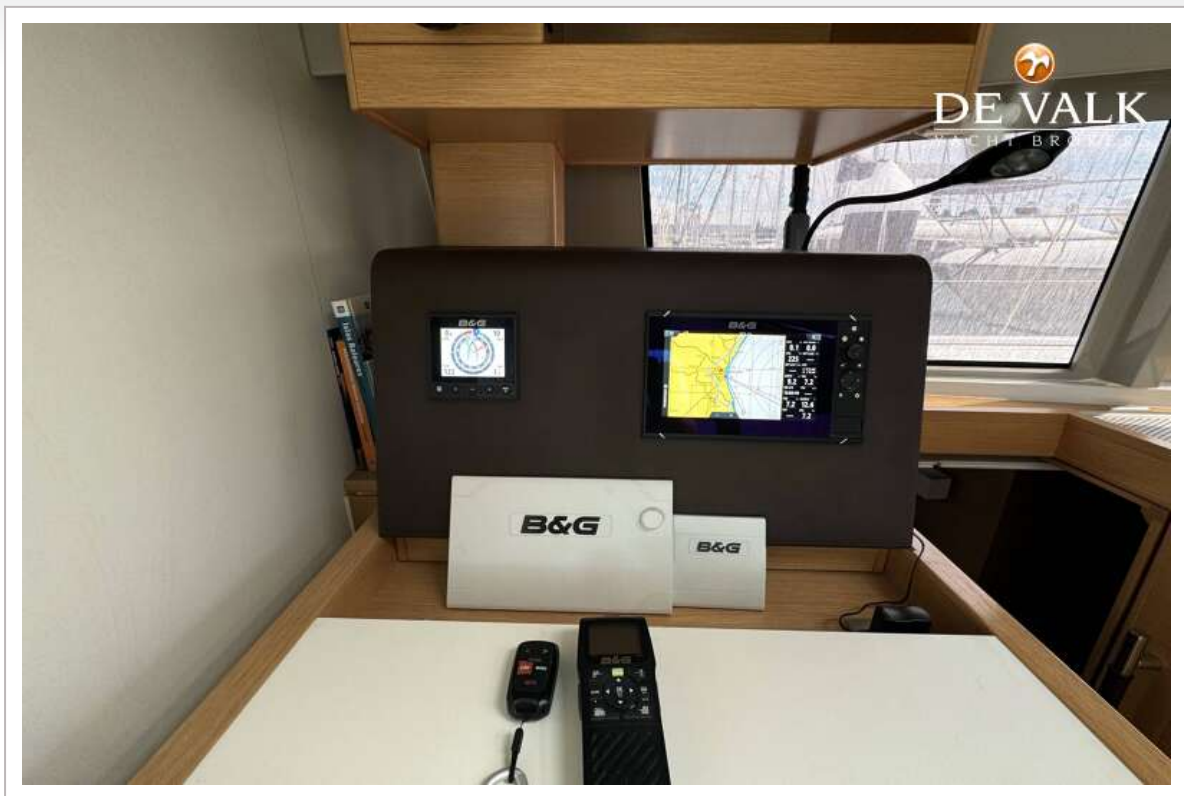
NAUTITECH 46 FLY



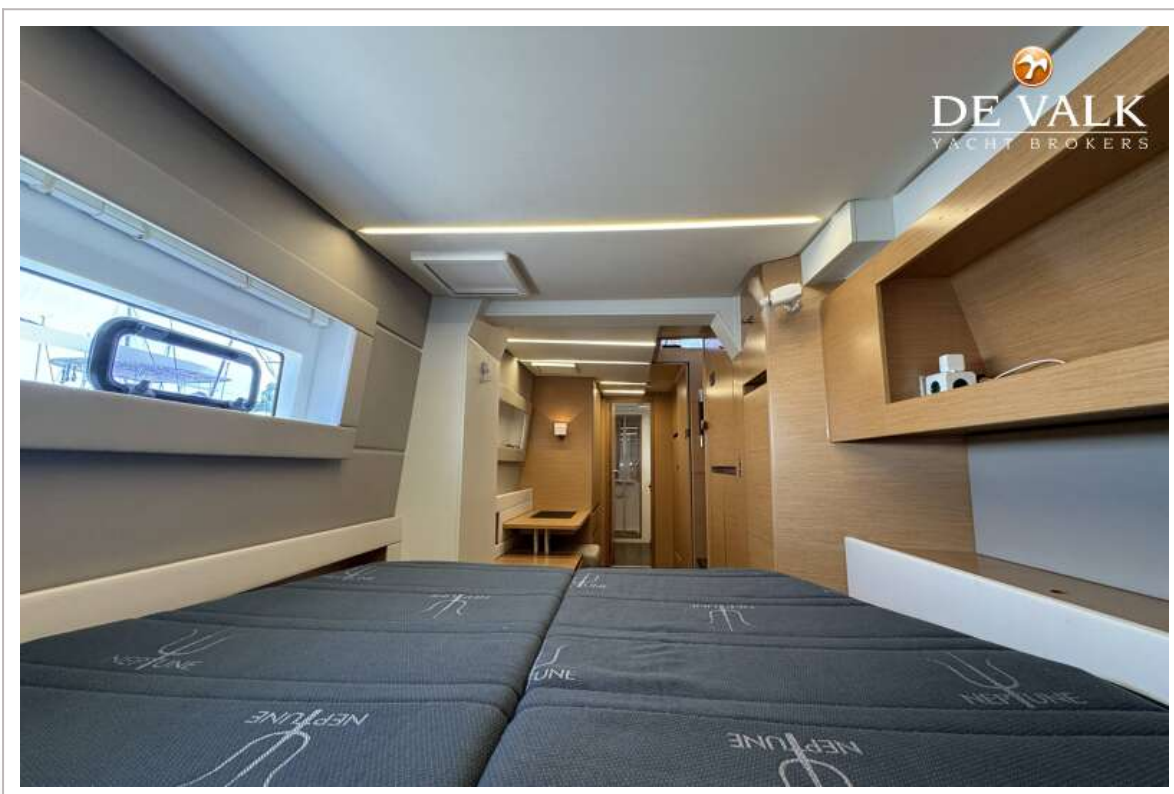
NAUTITECH 46 FLY



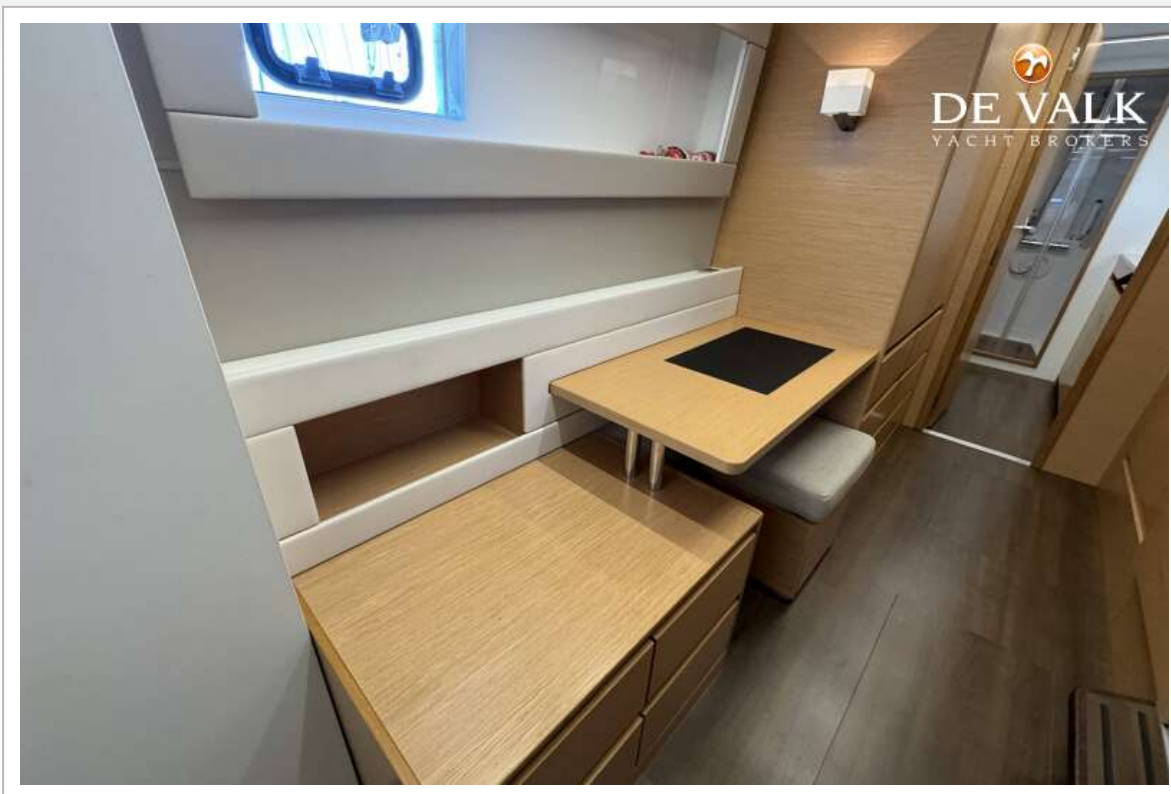
NAUTITECH 46 FLY



NAUTITECH 46 FLY



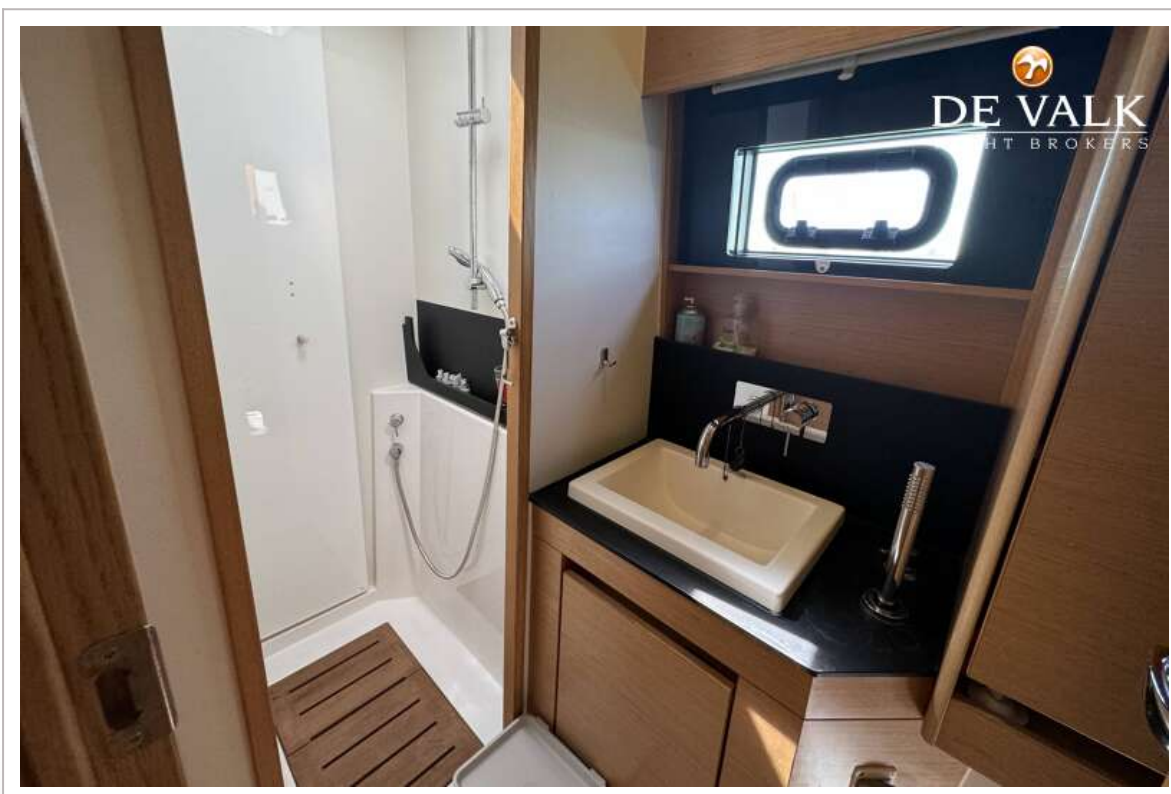
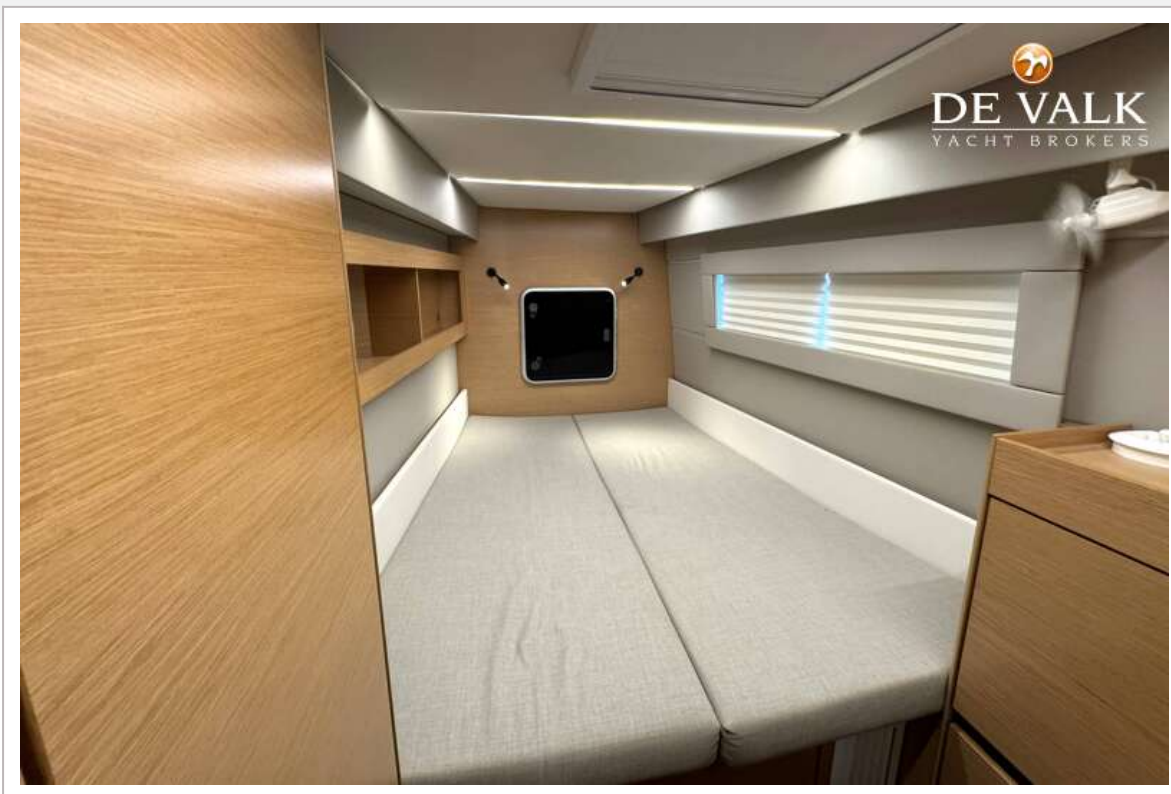
NAUTITECH 46 FLY



NAUTITECH 46 FLY

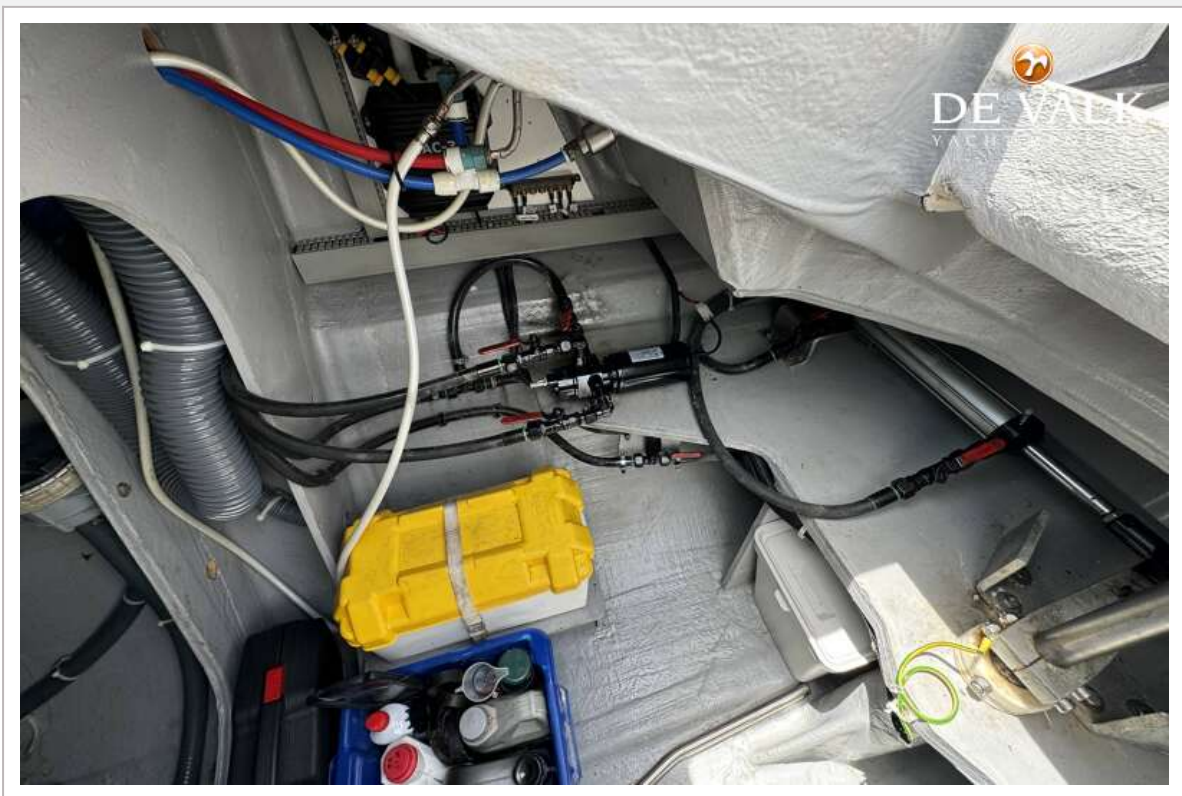


NAUTITECH 46 FLY



NAUTITECH 46 FLY

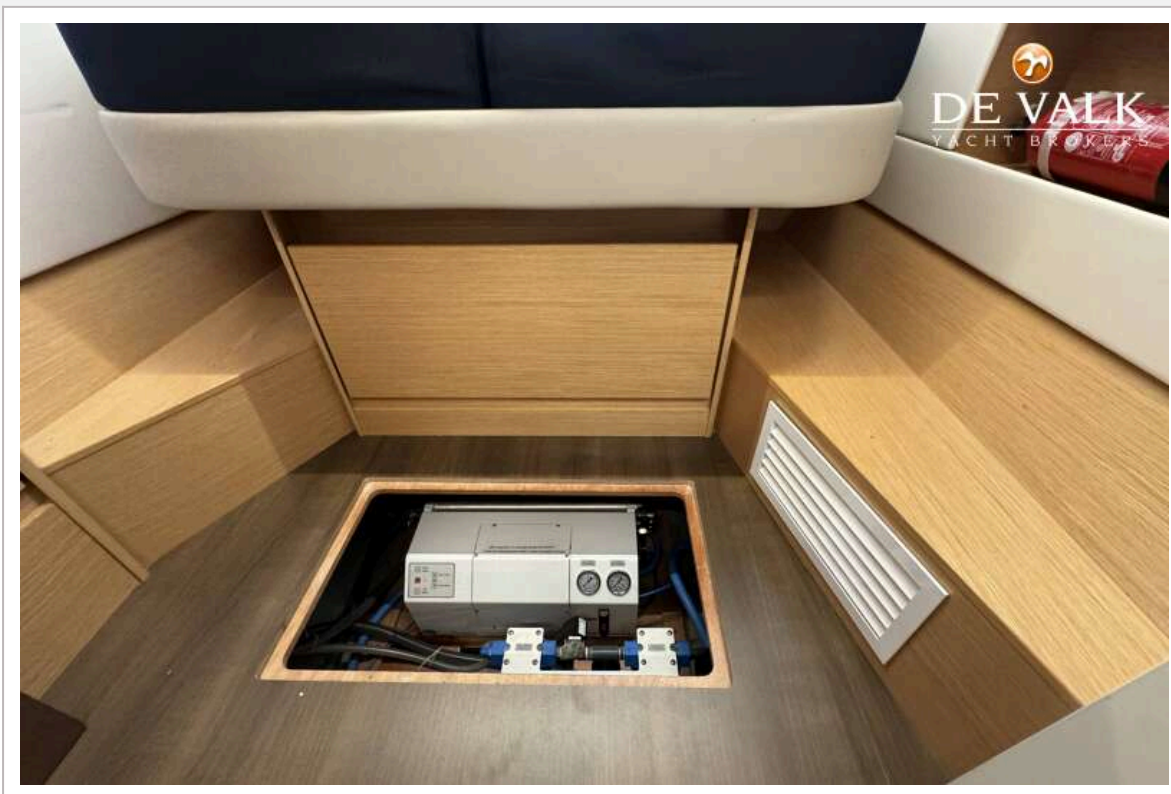




NAUTITECH 46 FLY



NAUTITECH 46 FLY



NAUTITECH 46 FLY

