



DE VALK
YACHT BROKERS



LUXE MOTOR 28M



DE VALK
YACHT BROKERS

LUXE MOTOR 28M

BROKER'S COMMENTS

The "Melba," a luxurious 28-meter motor yacht rebuilt from scratch in 2018, is perfectly designed for full-time living. This fully insulated vessel features central heating and air conditioning to ensure an optimal climate year-round. It offers two spacious cabins, each with an ensuite bathroom, providing the privacy and comfort of a five-star hotel. The elegant salon and modern kitchen enhance the onboard living experience with style and convenience. The Melba combines the freedom of the open water with the comforts of home, making it ideal for a luxurious lifestyle at sea.

Mark Hesselmans

SPECIFICATIONS

Dimensions	27.85 x 4.34 x 3,15 / 1.15 (m)	Builder	SRF Harlingen
Built	2018	Cabins	2
Material	Steel	Berths	4
Engine(s)	1 x Doosan 6 Cylinder Model L-136 diesel	Hp/Kw	160.00 (hp), 117.76 (kw)
Asking price	€ 379.900 (VAT)	Lying	contact Loosdrecht

CONTACT

Sales office	De Valk Loosdrecht B.V.	Telephone	+31 (0)35 582 90 30
Address	't Breukeleveense Meentje 6 1231LM Loosdrecht / Wijdmeren NL	E-mail	loosdrecht@devalk.nl

DISCLAIMER

These particulars are given in good faith as supplied but cannot be guaranteed.



LUXE MOTOR 28M

GENERAL

Model	LUXE MOTOR 28M
Type	motor yacht
LOA (m)	27,85
Beam (m)	4,34
Draft (m)	1,15
Draft min (m)	3,15
Year built	2018
Launched	2018
Builder	SRF Harlingen
Country	The Netherlands
Ballast (tonnes)	concrete 16
Gross tonnage	68
Hull material	steel
Hull colour	blue
Hull shape	flat bottom
Superstructure material	steel Nelfadur paint
Rubbing strake	steel
Deck material	steel
Deck finish	non-skid paint Epifanes Multiforte with sand added
Superstructure deck finish	non-skid paint
Cockpit deck finish	non-skid paint
Antifouling (year)	June 2023
Window frame	mahogany
Window material	double glazing
Deckhatch	yes
Portholes	brass
Insulation	rockwool
Mast can be lowered	manual
Fuel tank (litre)	steel 2700
Level indicator (fuel tank)	Glass in engine room



LUXE MOTOR 28M

Freshwater tank (litre)	steel 2400
Level indicator (freshwater)	In wheelhouse dashboard
Blackwater tank (litre)	polyethylene 1 X 800 1 X 200
Blackwater tank extraction	deck extraction + pump
Wheel steering	hydraulic Heavy duty system
Inside helm position	yes
More info on paintwork	Complete repaint June 2023

ACCOMMODATION

Cabins	2
Berths	4
Interior	teak Teak panelling and white boards
Floor	woodprint
Aft deck	yes
Pilot house	yes
Saloon	yes
Heating	central heating
Air-conditioning	yes
Dinette	yes
Opening door to aft deck	yes
Galley	yes
Countertop	corian
Sink	corian
Cooker	induction Miele
Oven	Miele
Extractor	yes
Microwave	yes
Fridge	1x Galley 1x Wheelhouse
Freezer	1x Galley
Hot water system	on central heating Post Diesel
Water pressure system	electrical Speck PM10



LUXE MOTOR 28M

Dishwasher	yes
Owners cabin	French bed
Wardrobe	hanging/drawers/shelves
Bathroom	en suite
Toilet	en suite
Toilet system	electric
Wash basin	in the bathroom
Shower	en suite
Guest cabin 1	double bed
Wardrobe	shelves
Bathroom	en suite
Toilet	en suite
Toilet system	electric
Wash basin	in the bathroom
Shower	en suite
Washing machine/dryer combi	yes

MACHINERY

No of engines	1
Make	Doosan 6 Cylinder
Type	Model L-136
HP	160
kW	117.76
Fuel	diesel
Year installed	2016
Engine hours	1048
Engine cooling system	closed keelcooling
Drive	shaft
Shaft seal	yes
Engine controls	bowden cable
Gearbox	hydraulic Dong I Marine 2,45:1



LUXE MOTOR 28M

Bowthruster	electric 370 KGF 24 Volt D300 12kw
Propeller type	fixed
Propeller blades	3 bronze
Propeller shaft material	stainless steel
Electric bilge pump	2x
Bilge alarm	yes
Generator	silent separator BW13,5 / 15 TKKS
Running hours generator	181
Batteries	yes
Start battery	2 x Standalone VMF Starter Batteries
Service battery	6 x Numax Auxillary Power House
Generator battery	1 x Standalone VMF battery to start BW Generator
Bowthruster battery	6 x Optima Yellow Top
Battery charger/inverter	Victron Quattro 24V/3000W/70A
Shorepower	with cable
Insulation transformer	Victron Isolation Transformer
Extra info	Waterluxe Water softener

NAVIGATION

Depth sounder	yes
Depth sounder/log	yes
VHF	yes
Rudder angle indicator	yes
Plotter/GPS	Garmin
AIS transceiver	Emtrak A100
Navigation lights	yes

EQUIPMENT

Bimini	yes
Sun awning	yes
Cockpit cushions	yes



LUXE MOTOR 28M

Cockpit table	yes
Boarding ladder	yes
Gangway	yes
Anchor	yes
Anchor chain	40M
Windlass	manual
Deck wash	yes
Sea railing	steel
Grab rail (superstructure)	steel
Railing side opening gates	yes
Wiper	yes
Horn	air pressure
Fenders	yes
Mooring lines	yes
Spare parts	yes
TV	yes
Extinguisher in engine room	yes



LUXE MOTOR 28M



LUXE MOTOR 28M



LUXE MOTOR 28M



LUXE MOTOR 28M



LUXE MOTOR 28M



LUXE MOTOR 28M



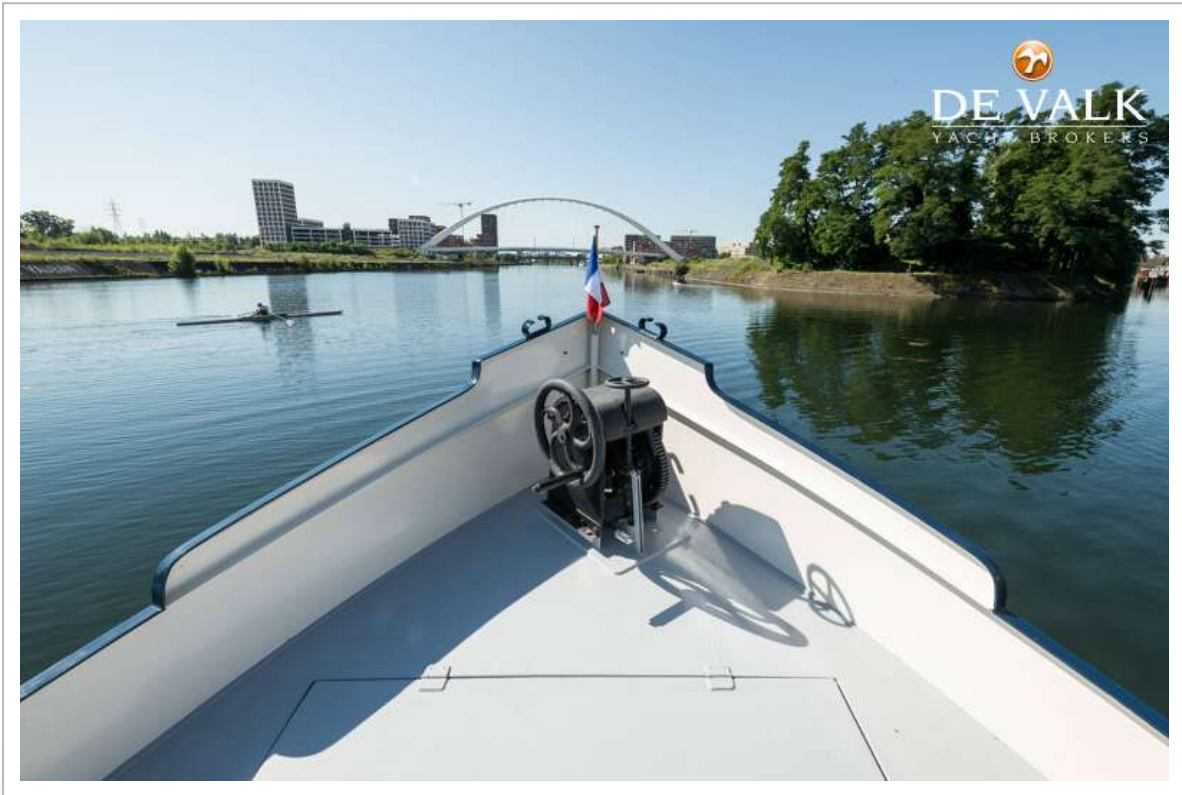
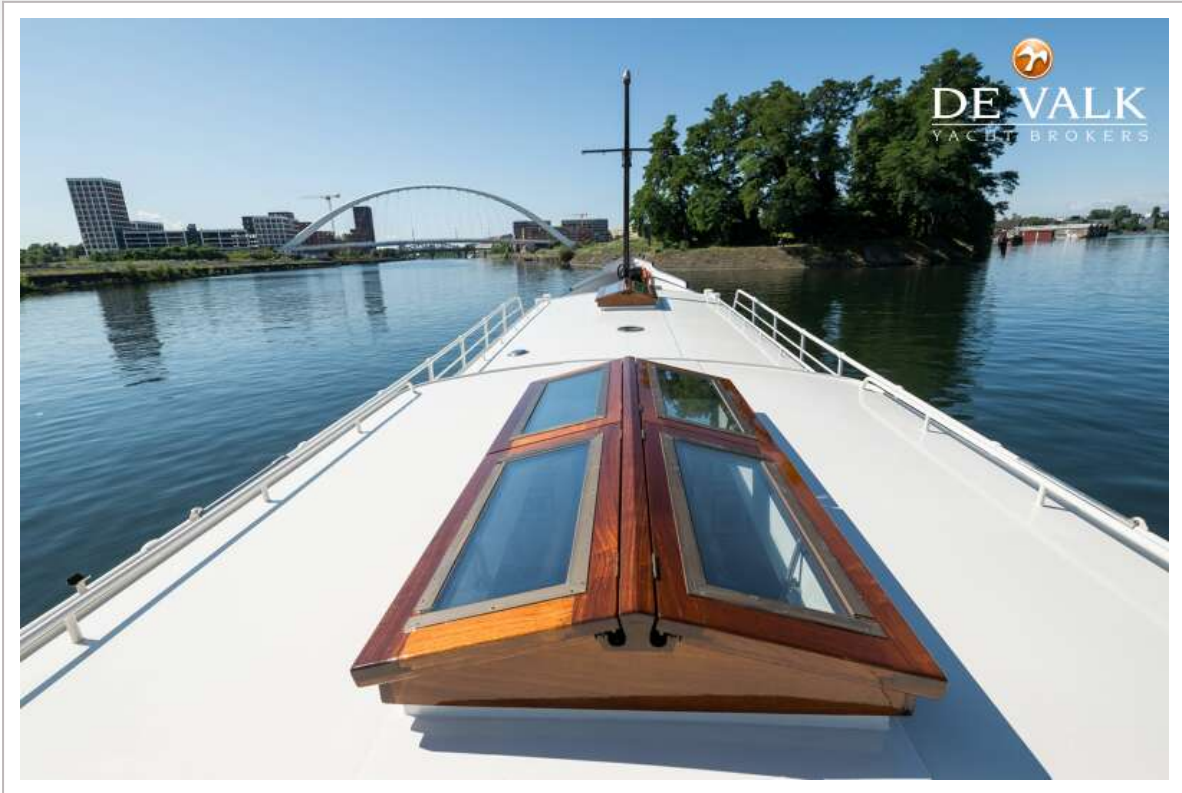
LUXE MOTOR 28M



LUXE MOTOR 28M



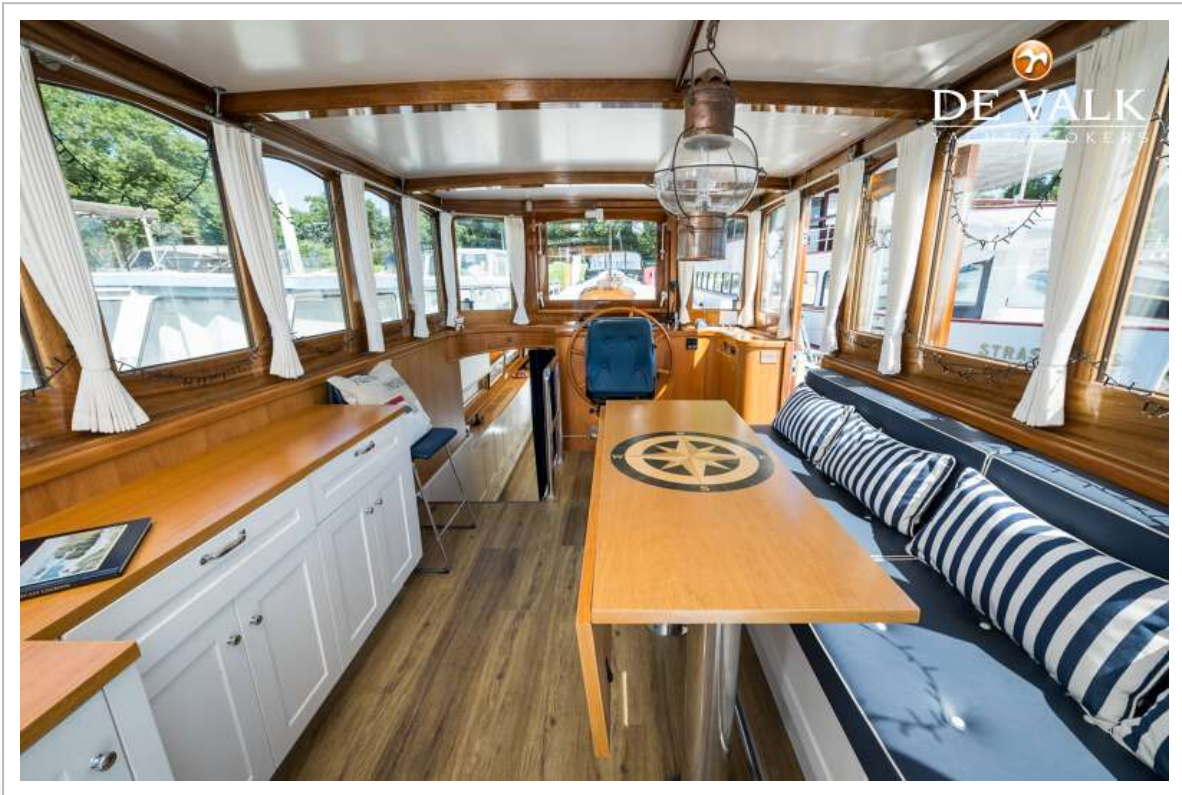
LUXE MOTOR 28M



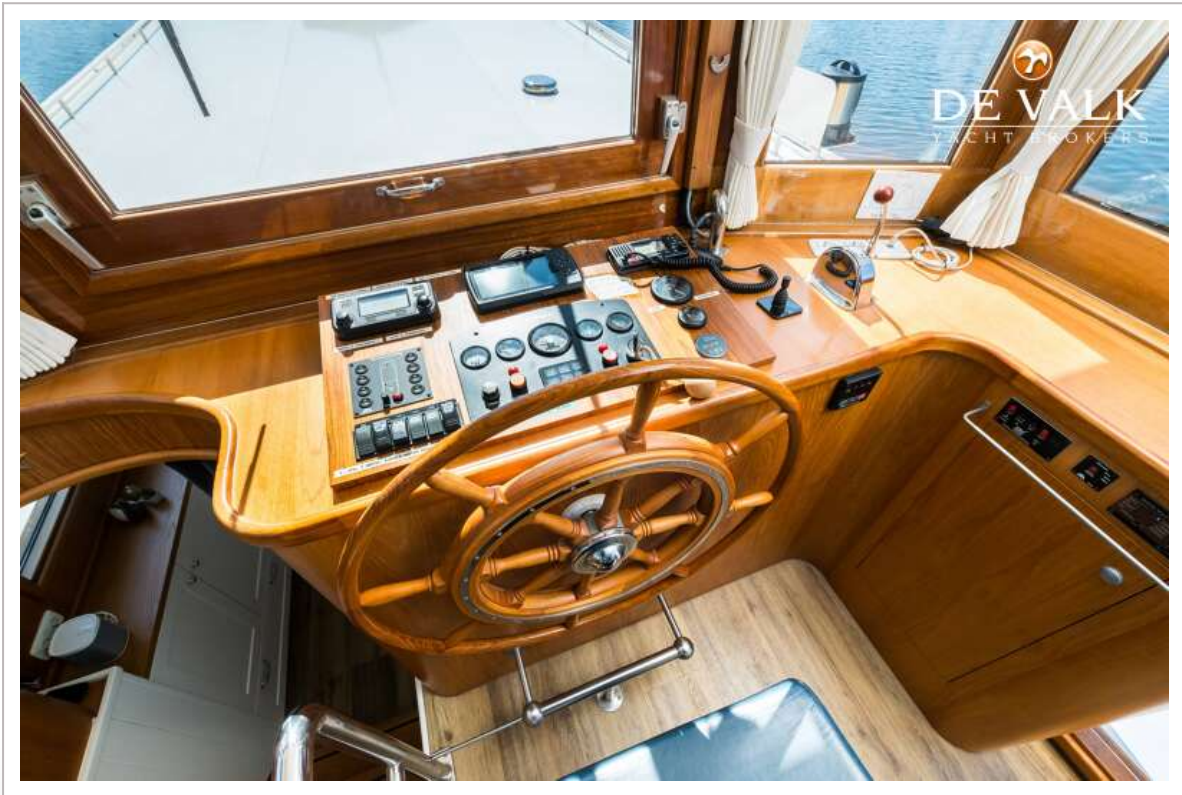
LUXE MOTOR 28M



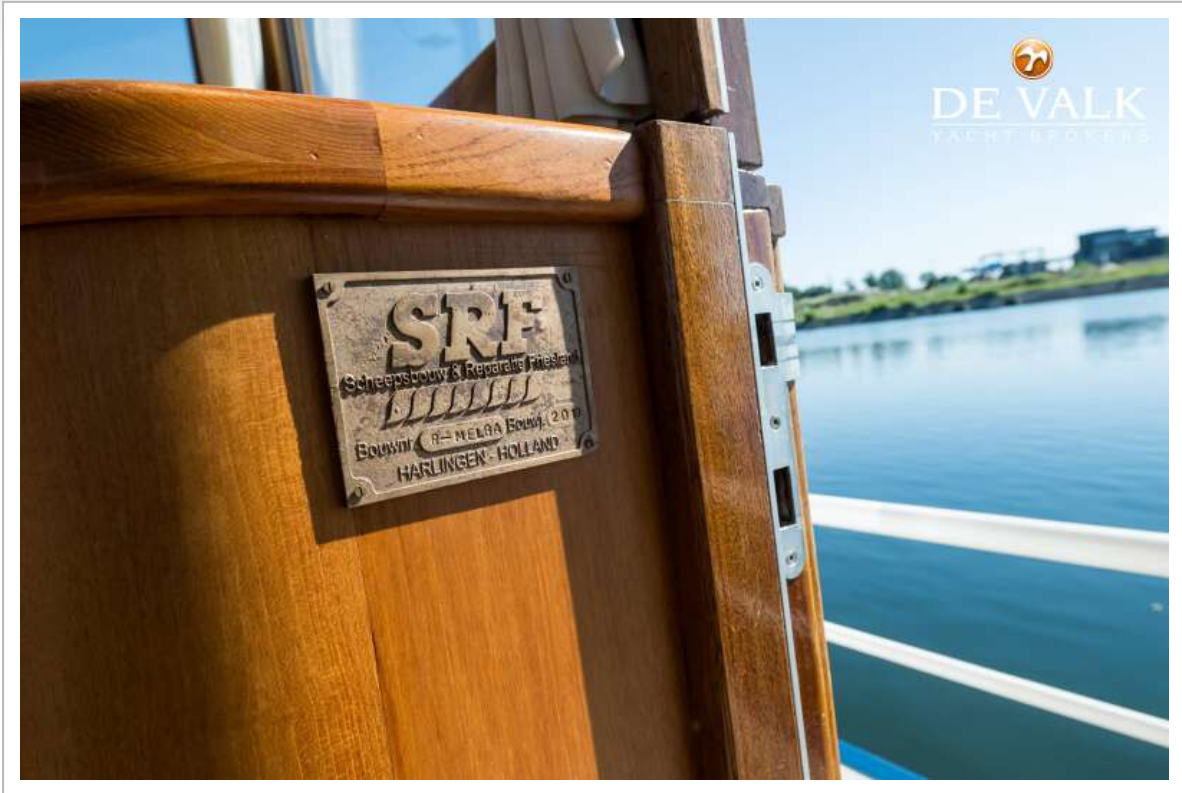
LUXE MOTOR 28M



LUXE MOTOR 28M



LUXE MOTOR 28M



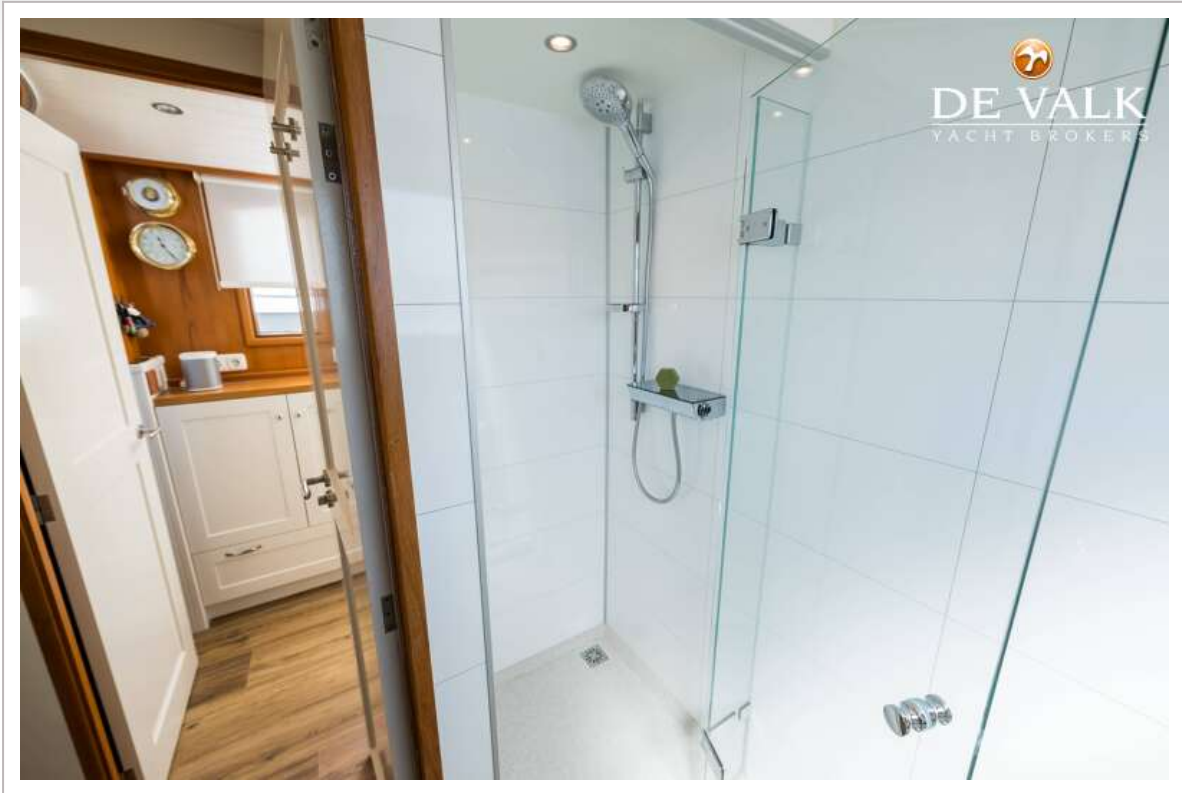

DE VALK
YACHT BROKERS



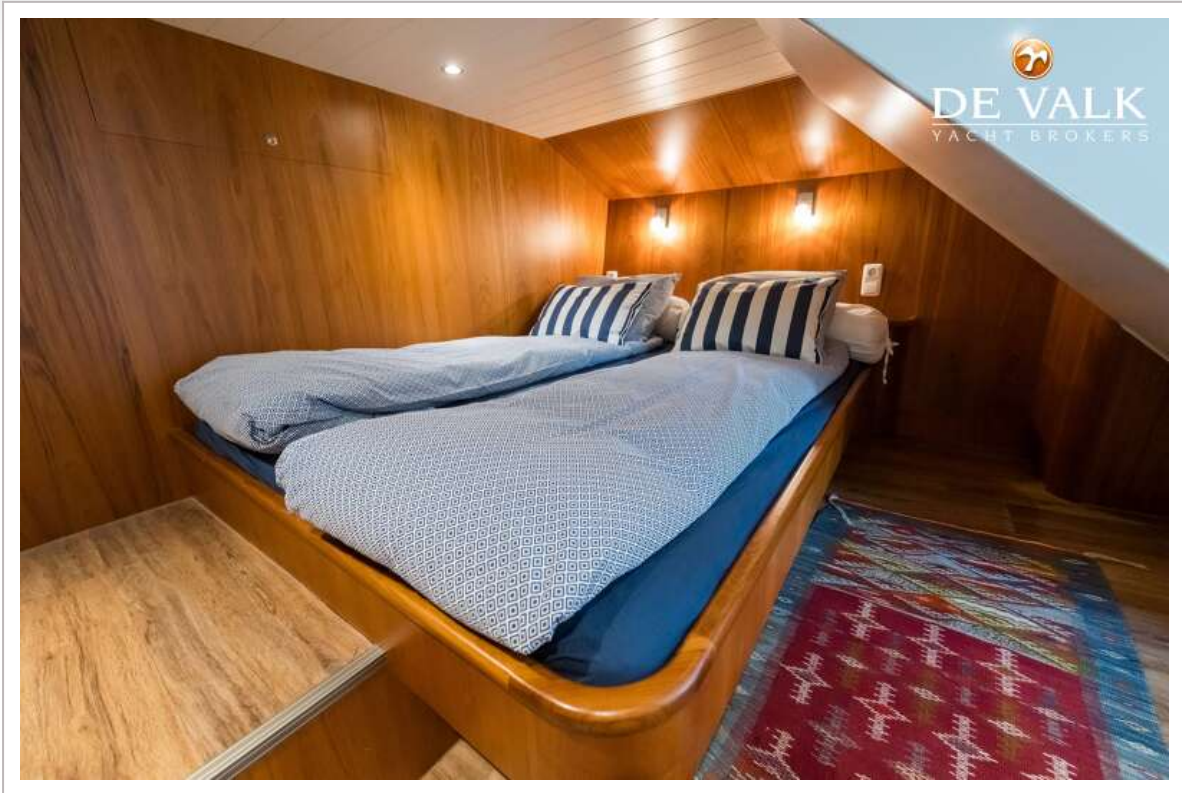

DE VALK
YACHT BROKERS



LUXE MOTOR 28M



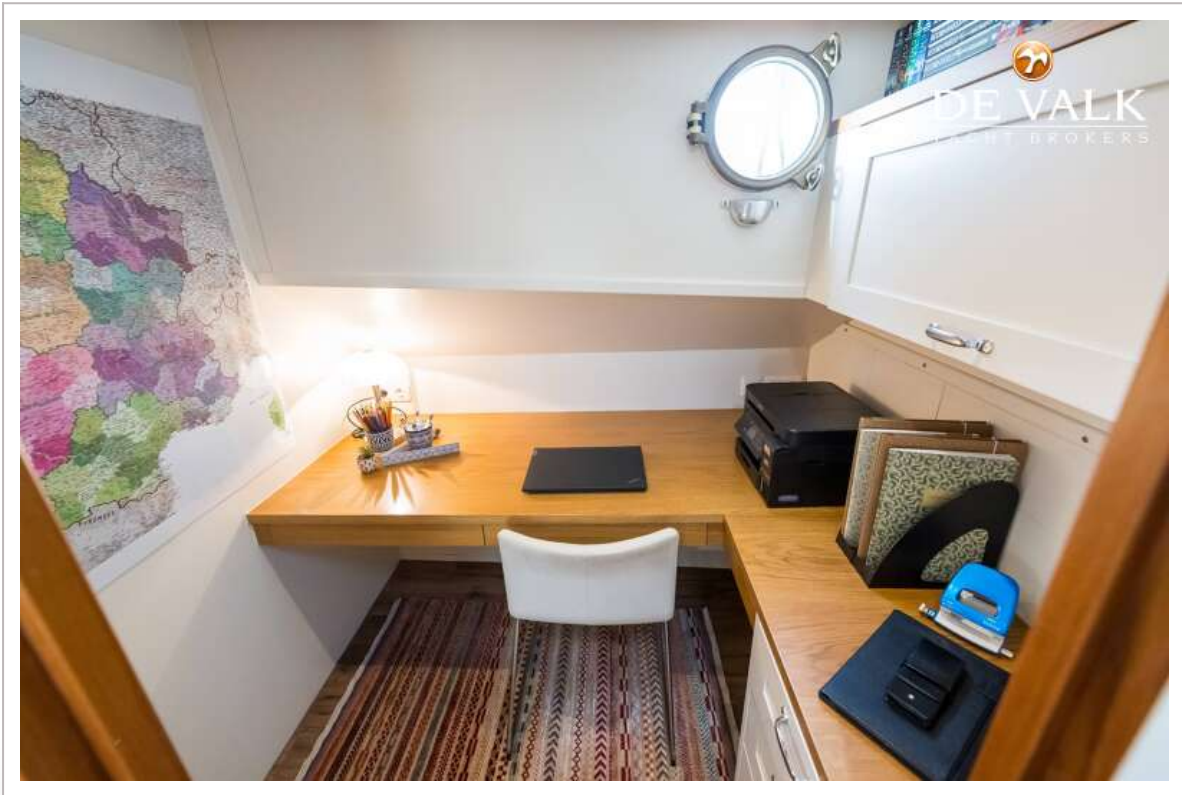
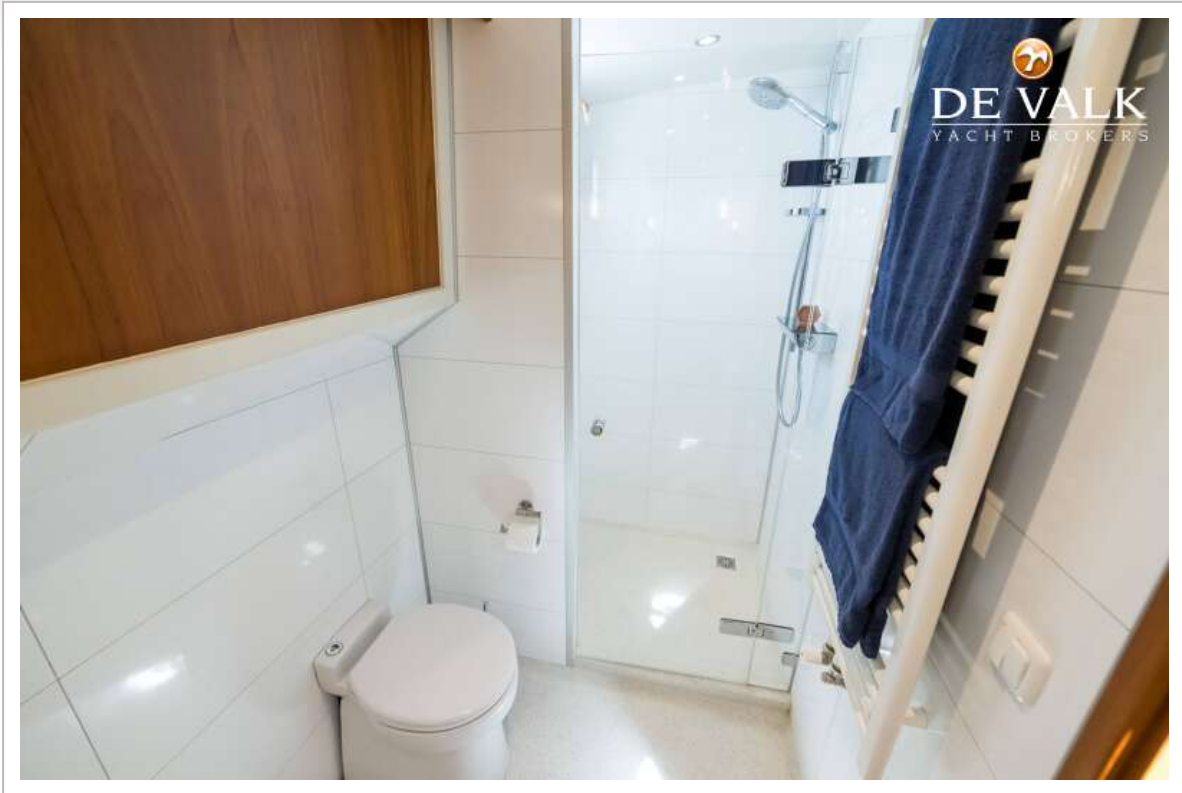
LUXE MOTOR 28M



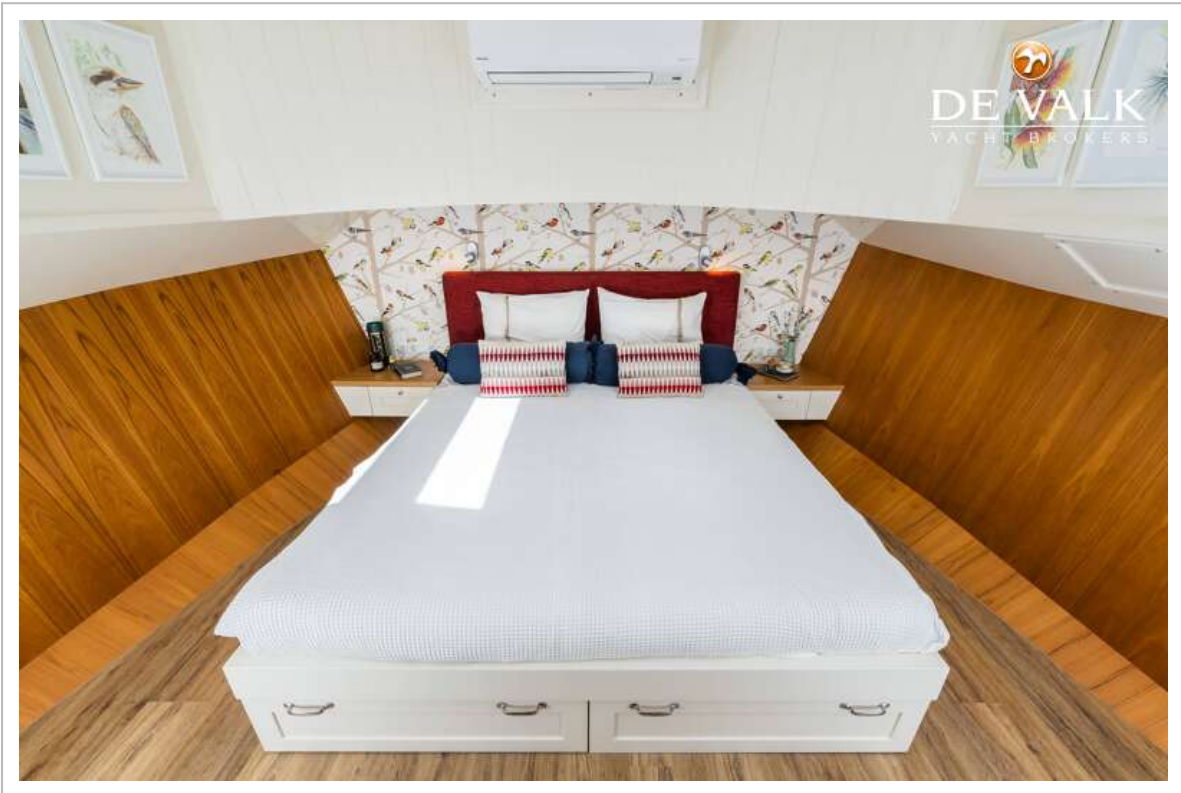
LUXE MOTOR 28M



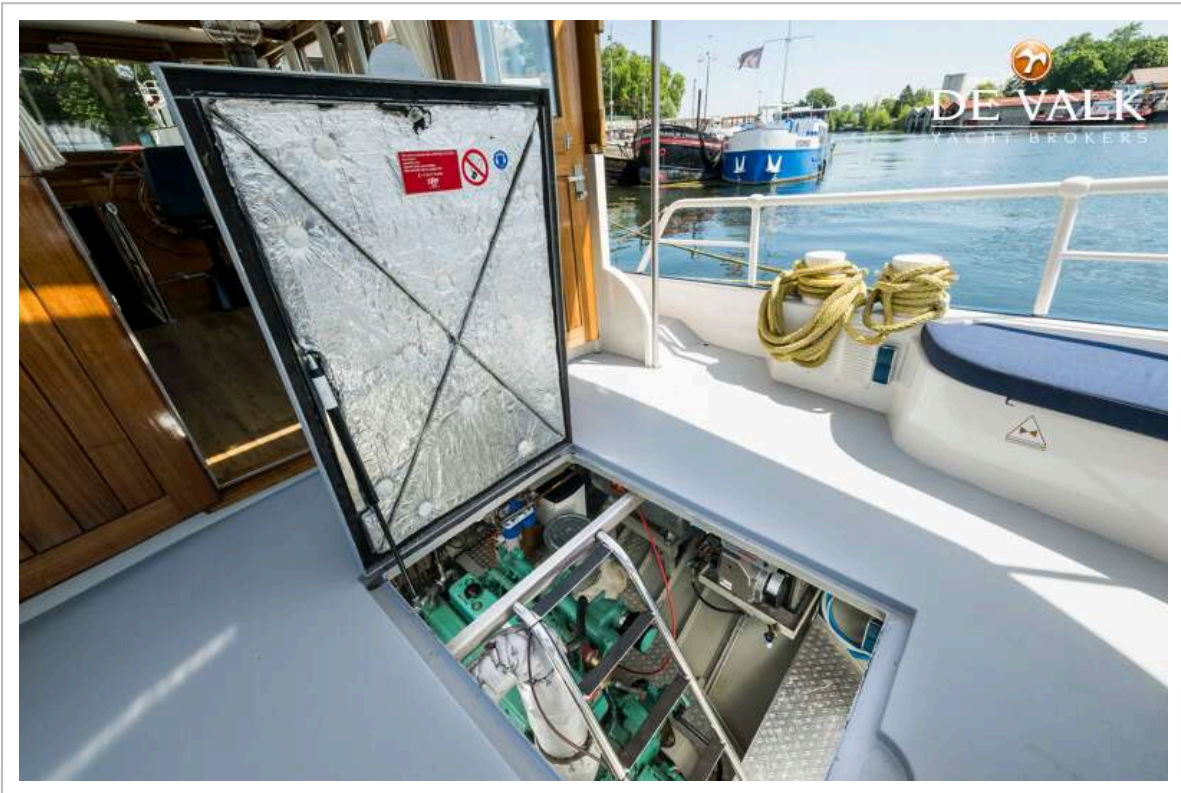
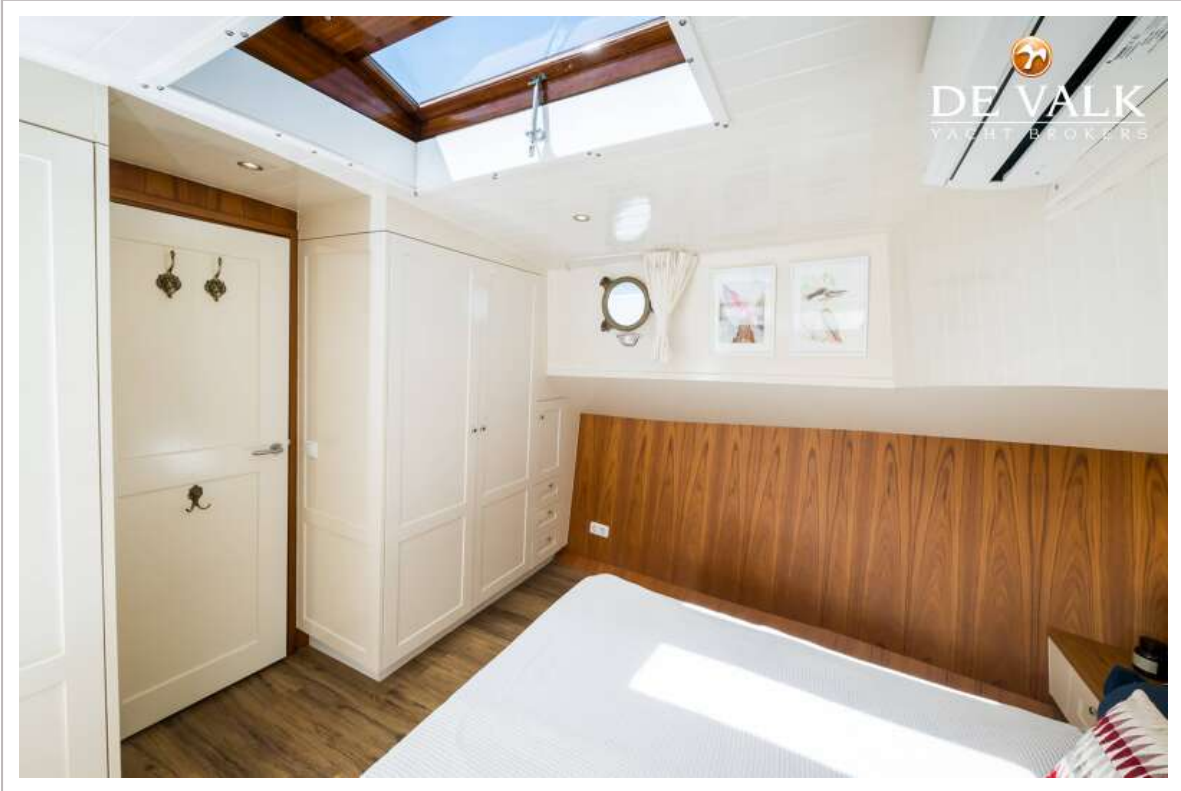
LUXE MOTOR 28M



LUXE MOTOR 28M



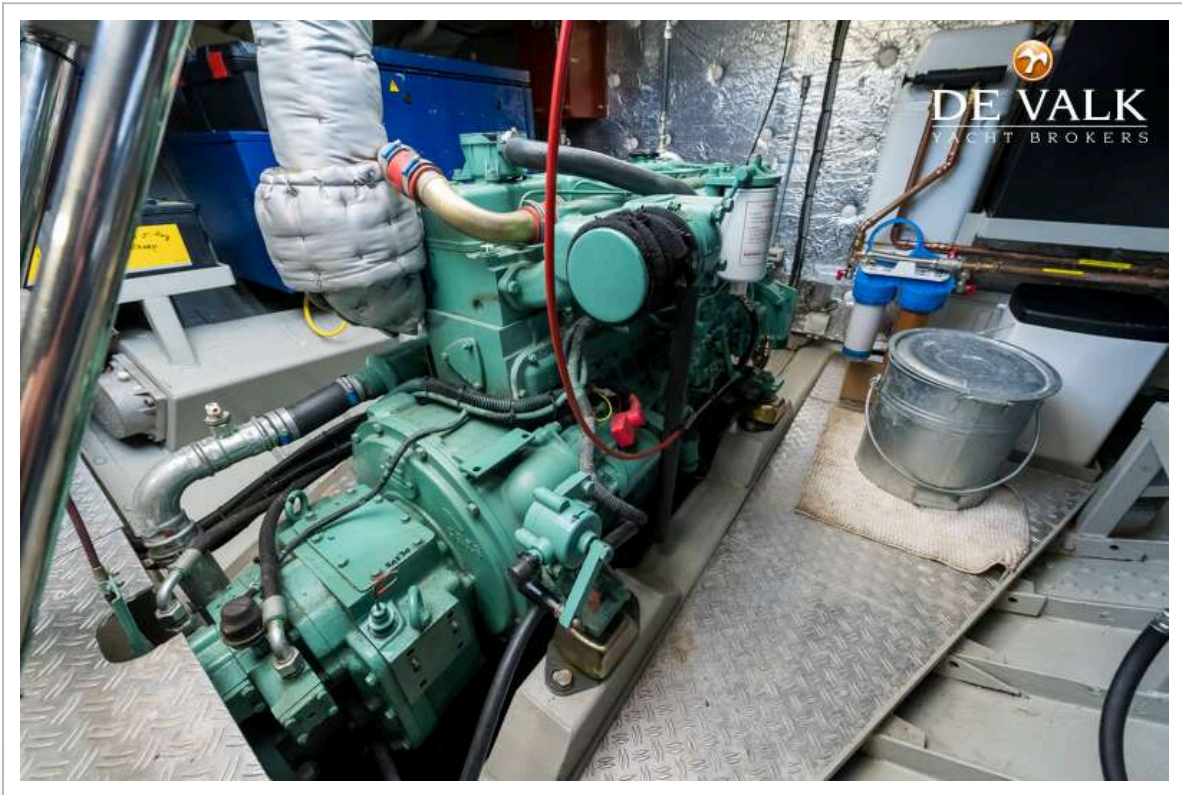
LUXE MOTOR 28M



LUXE MOTOR 28M



LUXE MOTOR 28M



LUXE MOTOR 28M

