



DE VALK
YACHT BROKERS



CRUISING HOME TRAVELLER XL



DE VALK
YACHT BROKERS

CRUISING HOME TRAVELLER XL

BROKER'S COMMENTS

The 'Blue Motion' houseboat is the ultimate combination of pure luxury and unparalleled flexibility. Perfectly suited for holidays, home use, as an office, or for meetings. Its aesthetic design ensures an impressive appearance, completing the overall look with style. A VAT invoice is available. The 150x300 cm bathroom tiles for both wall and floor coverings emphasize the luxury, complemented by underfloor heating. The heating system is powered by a separate 1000-liter oil tank. The ship is up for auction. Link:

<https://yachtbid.com/online-yacht-auctions/cruising-home-traveller-xl-blue-motion/>

Hartmut Ross

SPECIFICATIONS

Dimensions	14.95 x 5.50 x 1.00 (m)	Builder	
Built	2019	Cabins	1
Material	Steel	Berths	4
Engine(s)	1 x John Deere diesel	Hp/Kw	200.00 (hp), 147.20 (kw)
Asking price	sold (VAT)	Lying	contact Kiel

CONTACT

Sales office	De Valk Kiel	Telephone	+49 1712312133
Address	Hermann Rennerstrasse 12 22609 Hamburg DE	E-mail	kiel@devalk.nl

DISCLAIMER

These particulars are given in good faith as supplied but cannot be guaranteed.



GENERAL

Model	CRUISING HOME TRAVELLER XL
Type	motor yacht
LOA (m)	14,95
Beam (m)	5,50
Draft (m)	1,00
Headroom (m)	2,20
Year built	2019
Launched	2019
Country	The Netherlands
Displacement (t)	40
CE norm	D
Hull material	steel
Hull colour	blue
Hull thickness (mm)	6
Superstructure material	steel
Rubbing strake	steel
Deck material	steel
Deck finish	non-skid paint
Superstructure deck finish	non-skid paint
Cockpit deck finish	non-skid paint
Window frame	aluminium
Window material	tempered glass
Insulation	foam
Flybridge	yes
Mast can be lowered	manual
Fuel tank (litre)	steel 1000
Fuel tank 2 (litre)	Heating oil 1000
Level indicator (fuel tank)	yes
Outside helm position	yes
More info on paintwork	This houseboat stands out in three shades of blue



ACCOMMODATION

Cabins	1
Berths	4
Floor	wood Oak wood
Open cockpit	yes
Aft deck	yes
Pilot house/deck saloon	yes
Saloon	yes
Headroom saloon (m)	2,20
Heating	floor heating
Dining room	yes
Sliding door to aft deck	yes
Galley	yes
Owners cabin	French bed
Bed length (m)	2
Wardrobe	hanging/drawers/shelves
Bathroom	separate
Toilet	separate
Toilet system	electric
Wash basin	in the bathroom
Shower	separate
Extra info	Warm accents for the interior and a beautiful shower.
Sky lounge	yes

MACHINERY

No of engines	1
Make	John Deere
HP	200
kW	147.20
Fuel	diesel
Year installed	2019



Gearbox	hydraulic
Bowthruster	electric
Sternthruster	electric
Exhaust	yes
Shaft lubrication	grease
Electric bilge pump	yes
Electrical installation	yes
Start battery	yes
Service battery	yes
Navigation Battery	yes
Electric engine battery	yes
Bowthruster battery	yes
Sternthruster battery	yes
Battery monitor	yes
Battery charger	yes
Inverter	yes
Battery charger/inverter	yes

NAVIGATION

Compass	yes
Electric compass	yes
Depth sounder/log	yes
VHF	yes
Autopilot	yes
Rudder angle indicator	yes
Plotter/GPS	yes
Wifi antenna	yes
Navigation lights	yes

EQUIPMENT

Fixed windscreen	yes
------------------	-----



Cockpit cushions	yes
Cockpit table	yes
Cockpit chairs	yes
Bathing platform	yes
Boarding ladder	yes
Anchor	yes
Anchor chain	yes
Windlass	electrical
Deck wash	yes
Sea railing	stainless steel
Pushpit	yes
Fenders	yes
Mooring lines	yes
Spare parts	yes
Tools	yes
TV	yes





BROKERAGE | CHARTER | BERTHS | FINANCE | INSURANCE | YACHT MANAGEMENT
DE VALK
YACHT BROKERS



**This yacht will be auctioned,
for further details please visit www.devalk.nl**

**Dit schip zal worden geveild,
voor meer informatie gaat u naar www.devalk.nl**

**Dieses Schiff wird versteigert,
für weitere informationen besuchen Sie www.devalk.nl**

WWW.DEVALK.NL



DE VALK
YACHT BROKERS



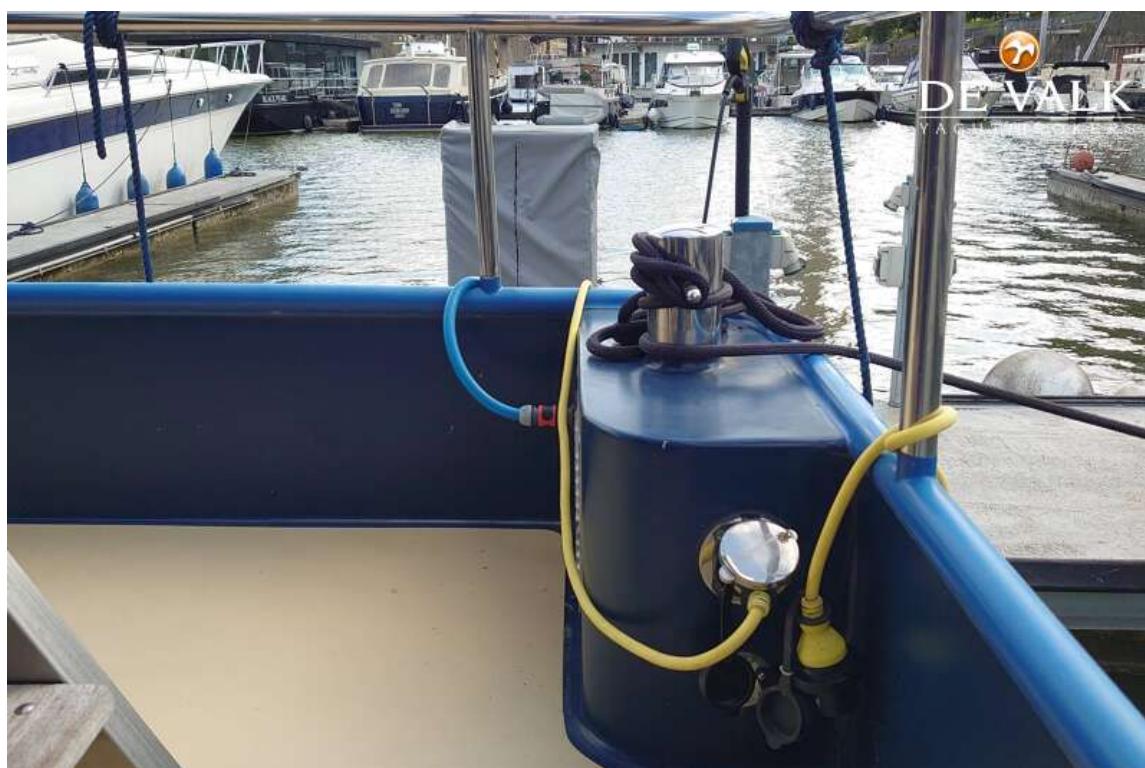
CRUISING HOME TRAVELLER XL



CRUISING HOME TRAVELLER XL

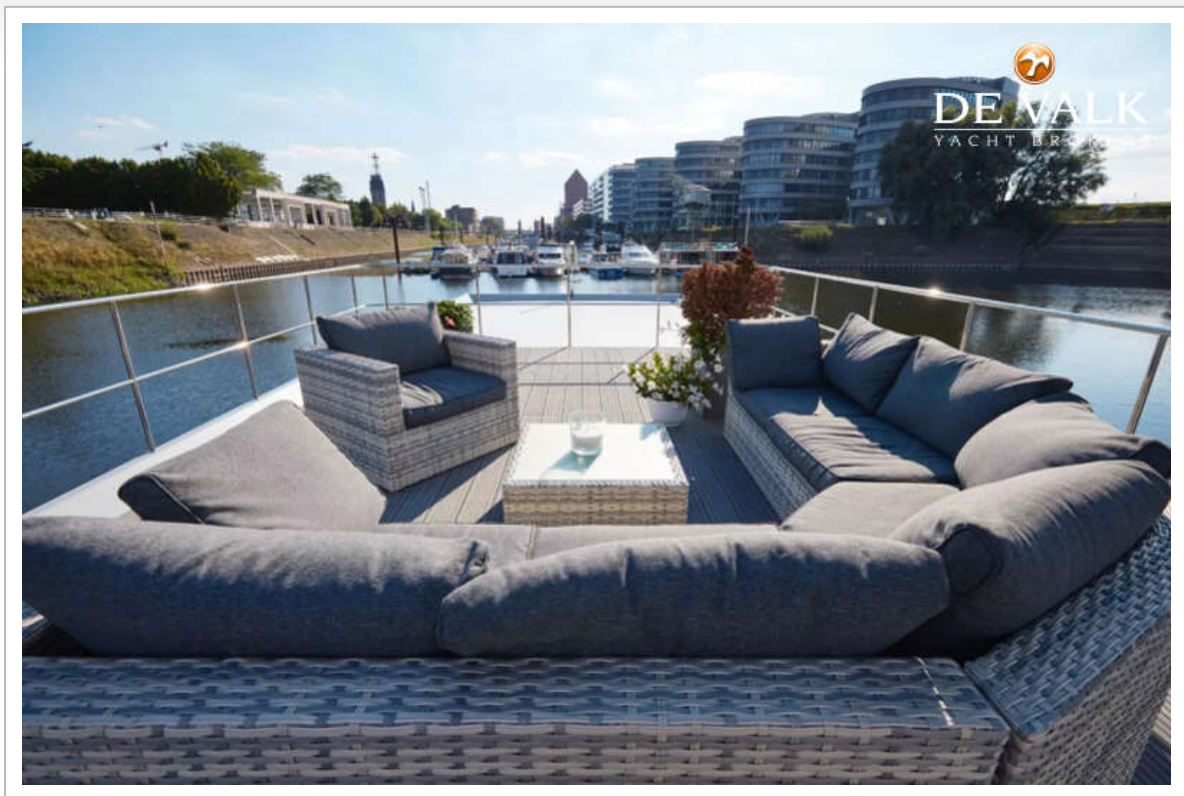


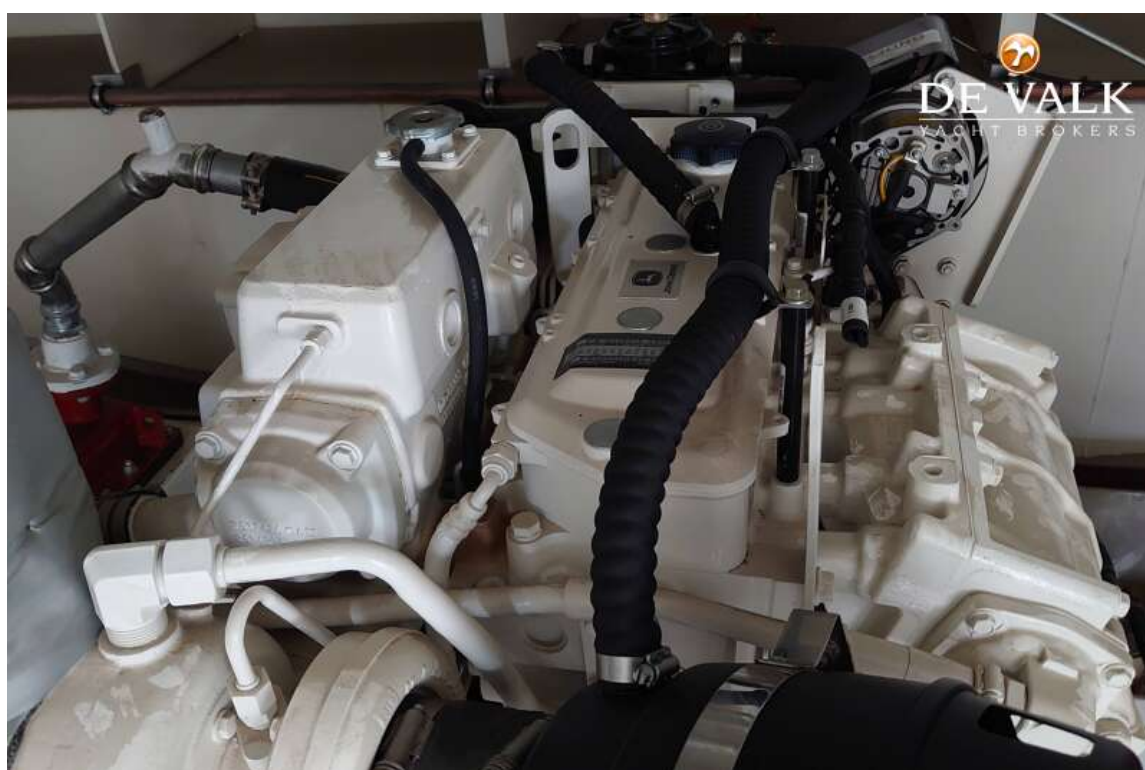




CRUISING HOME TRAVELLER XL

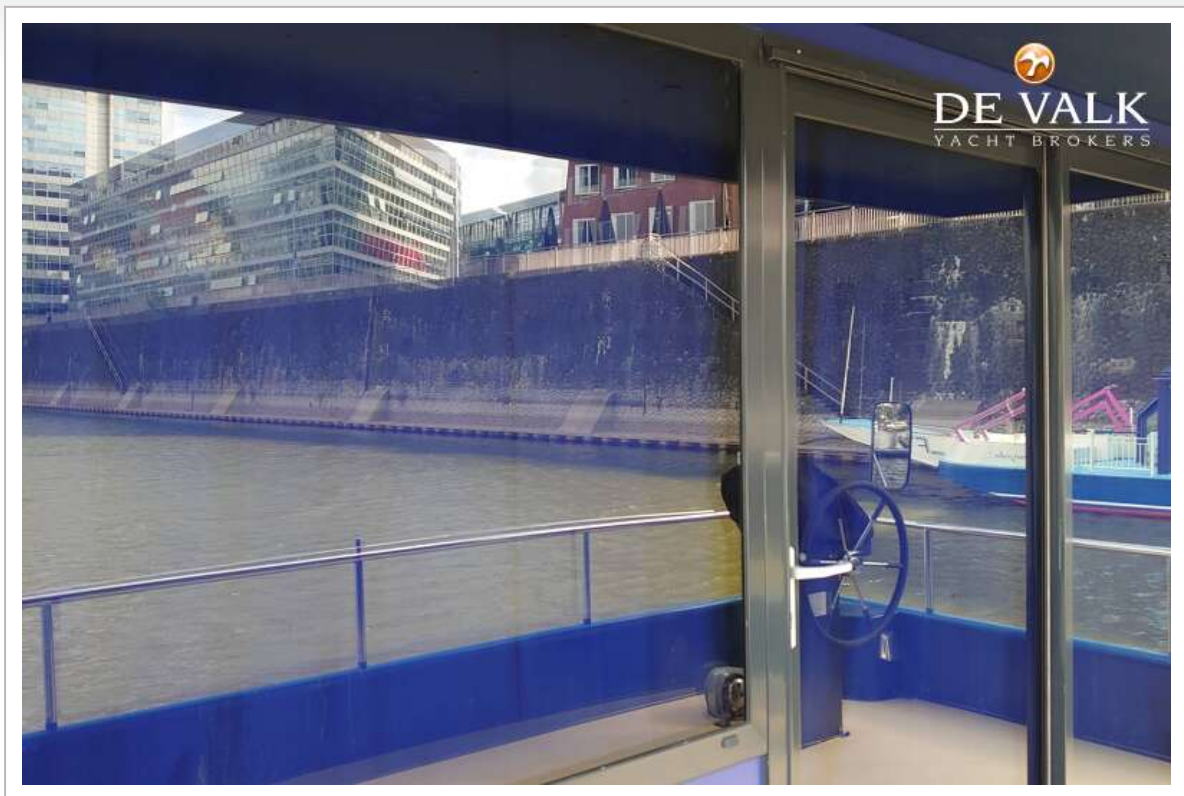


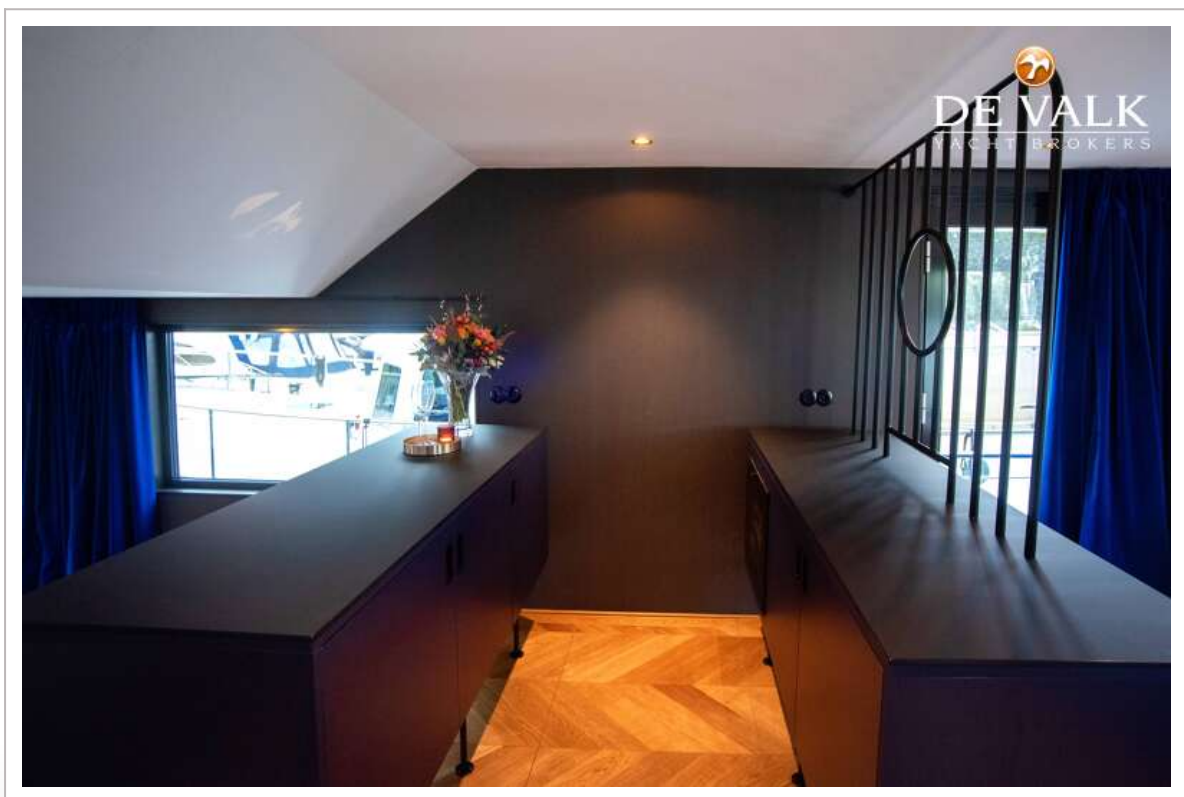
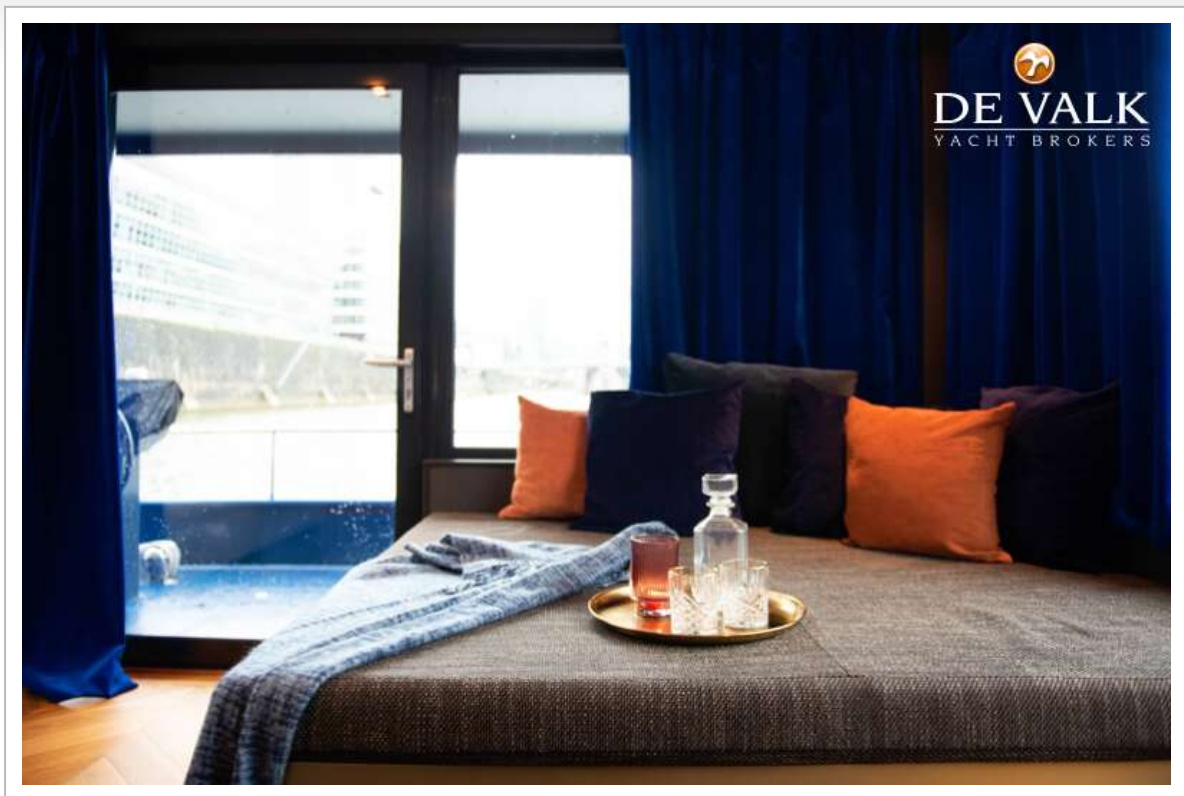


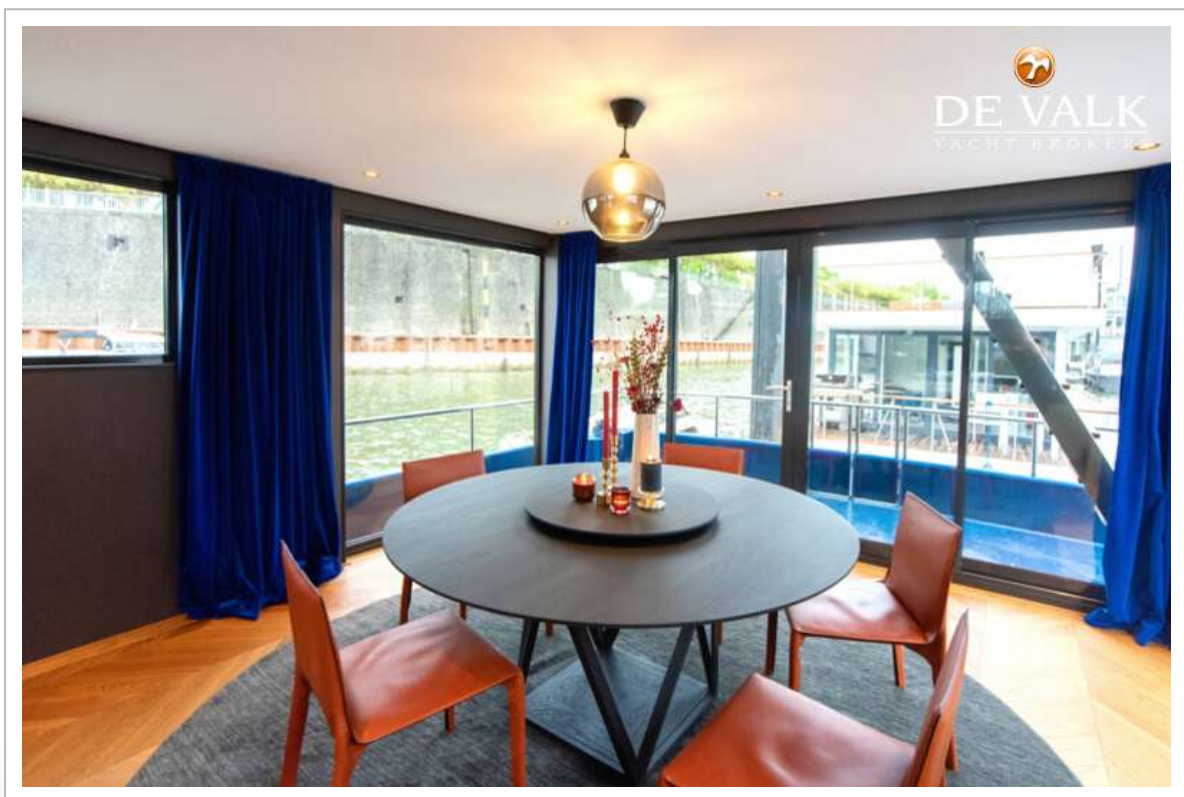
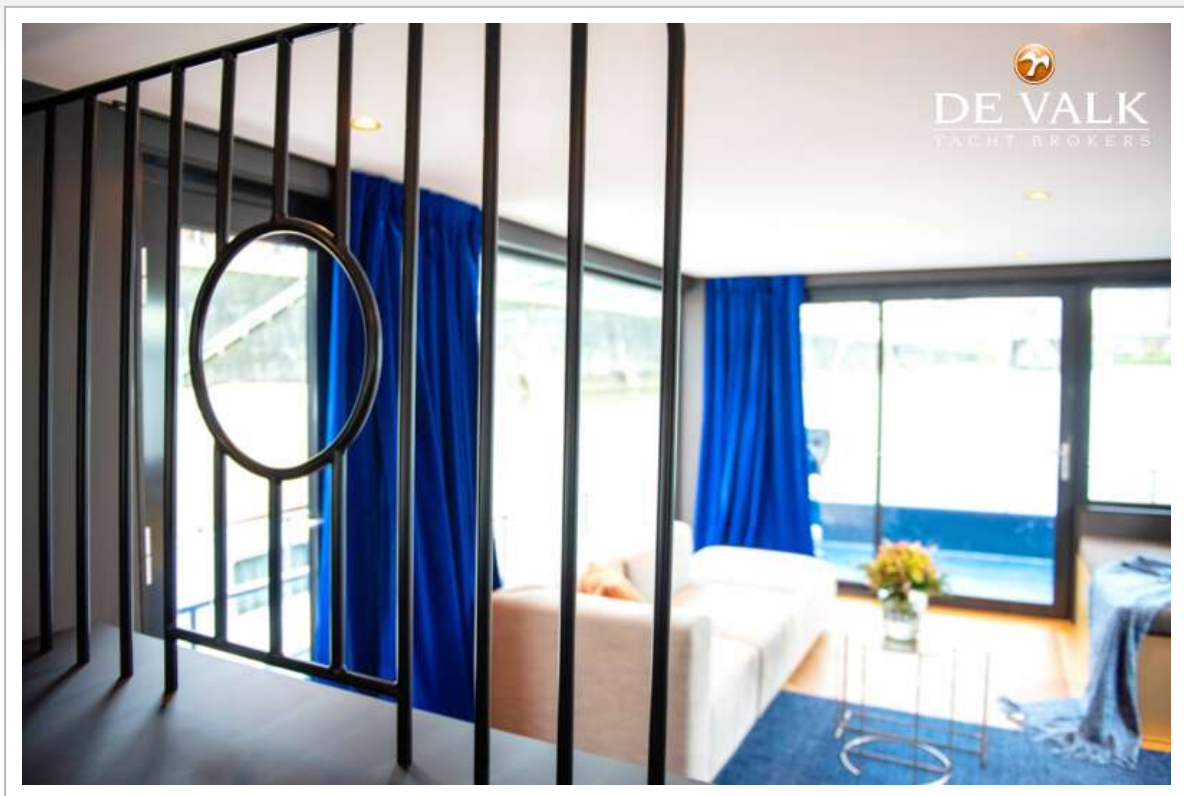




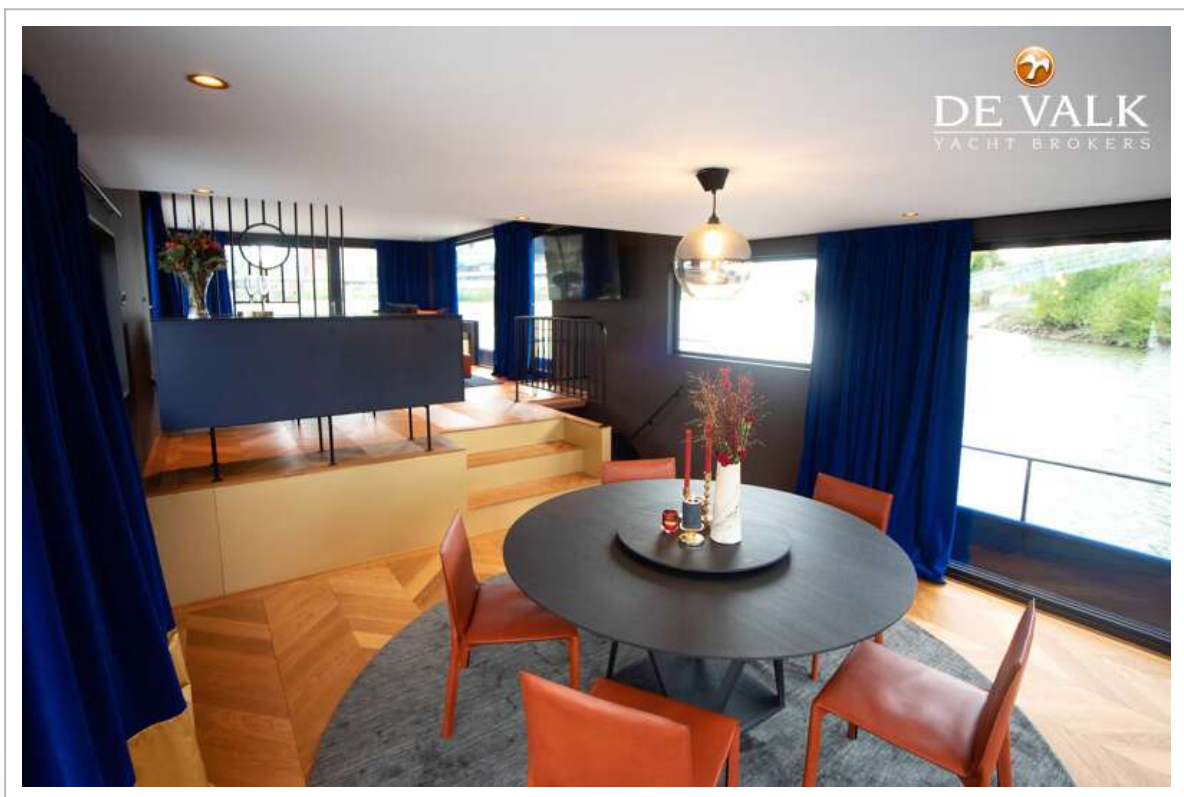
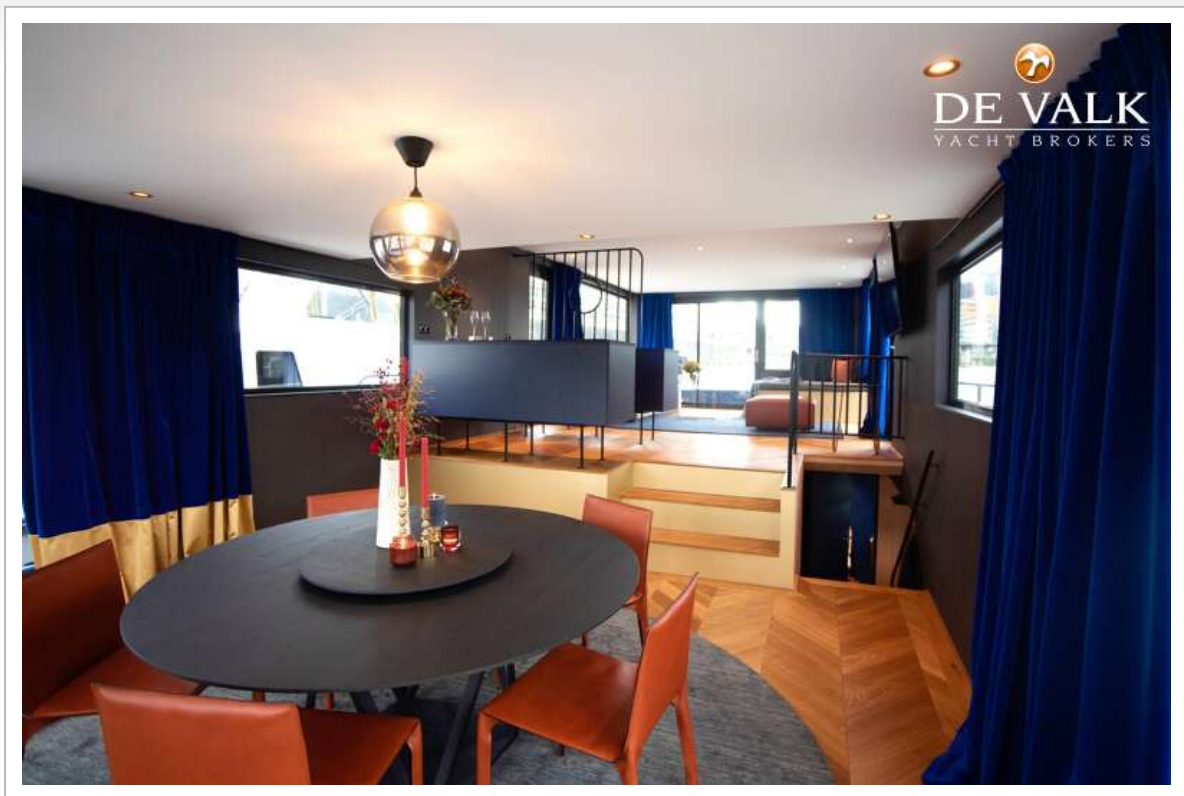
CRUISING HOME TRAVELLER XL



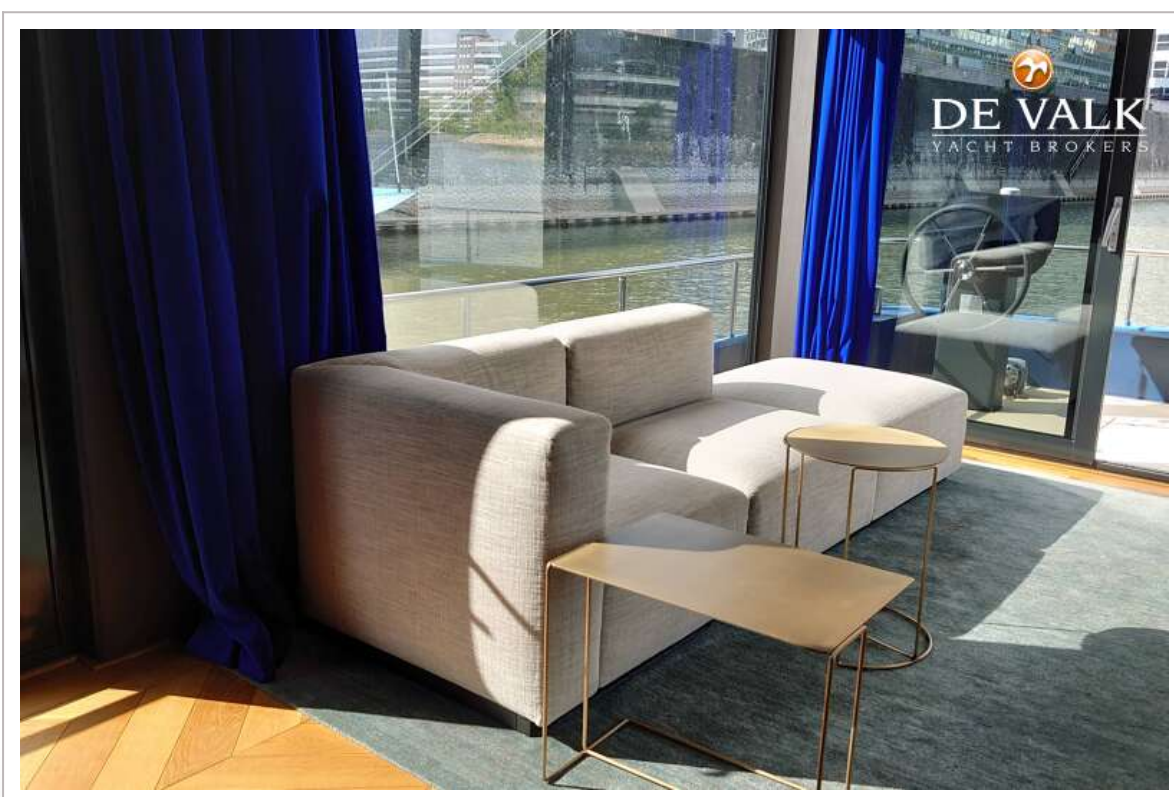
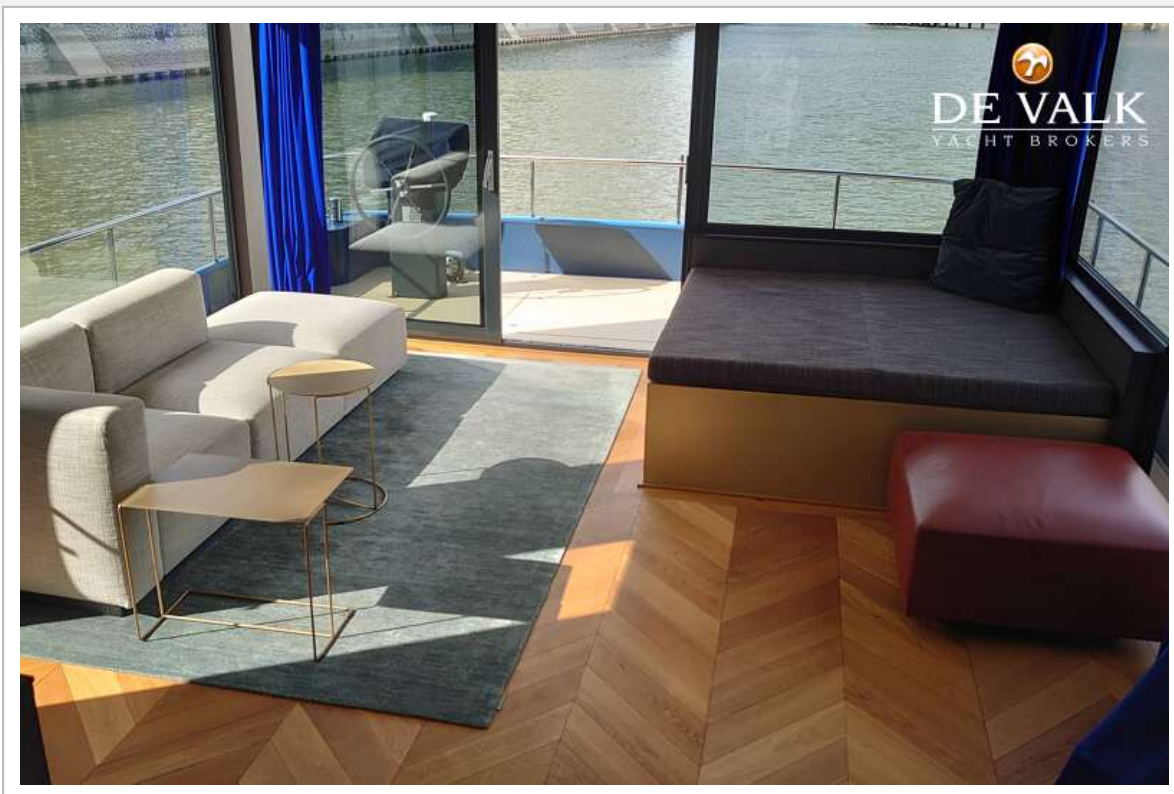


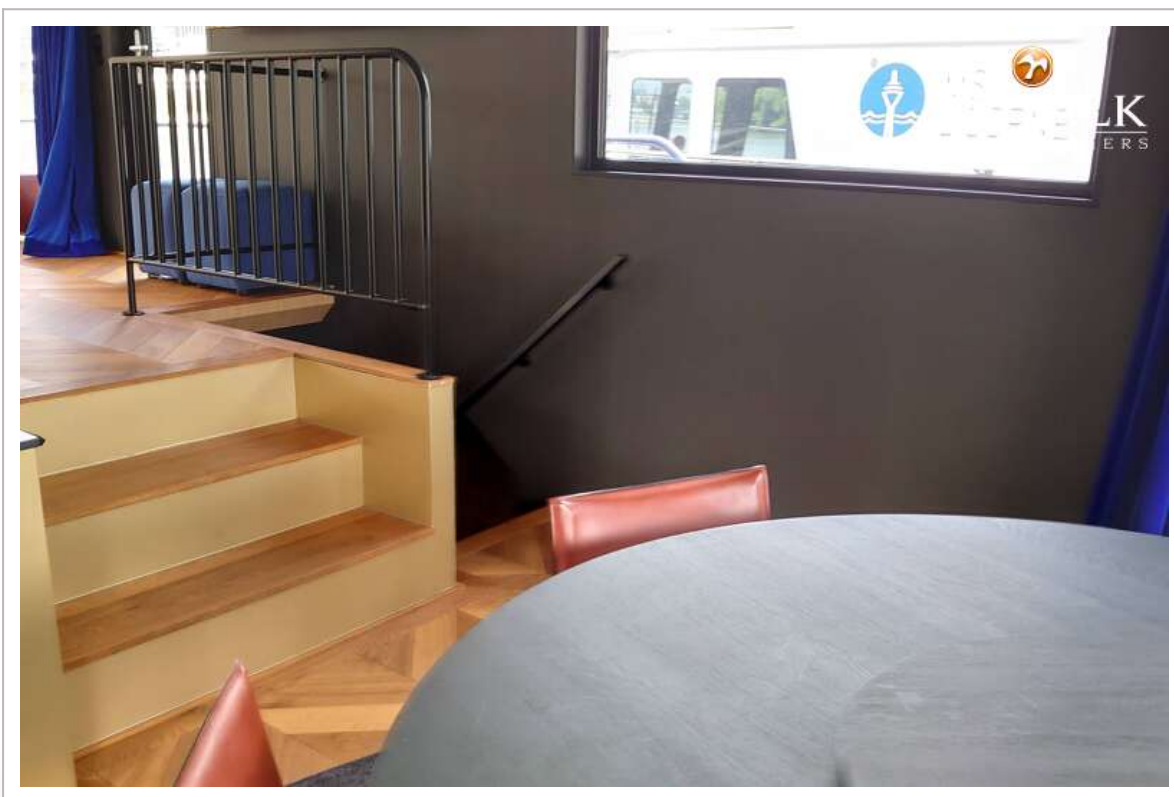
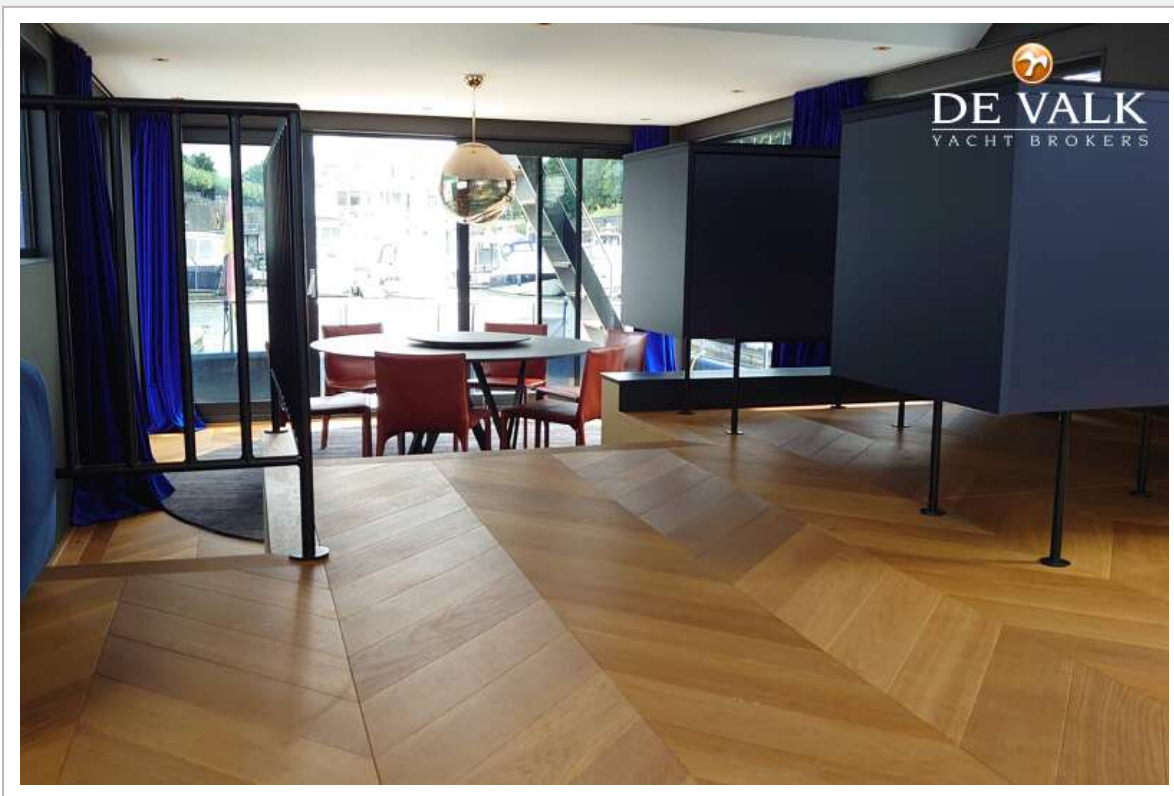


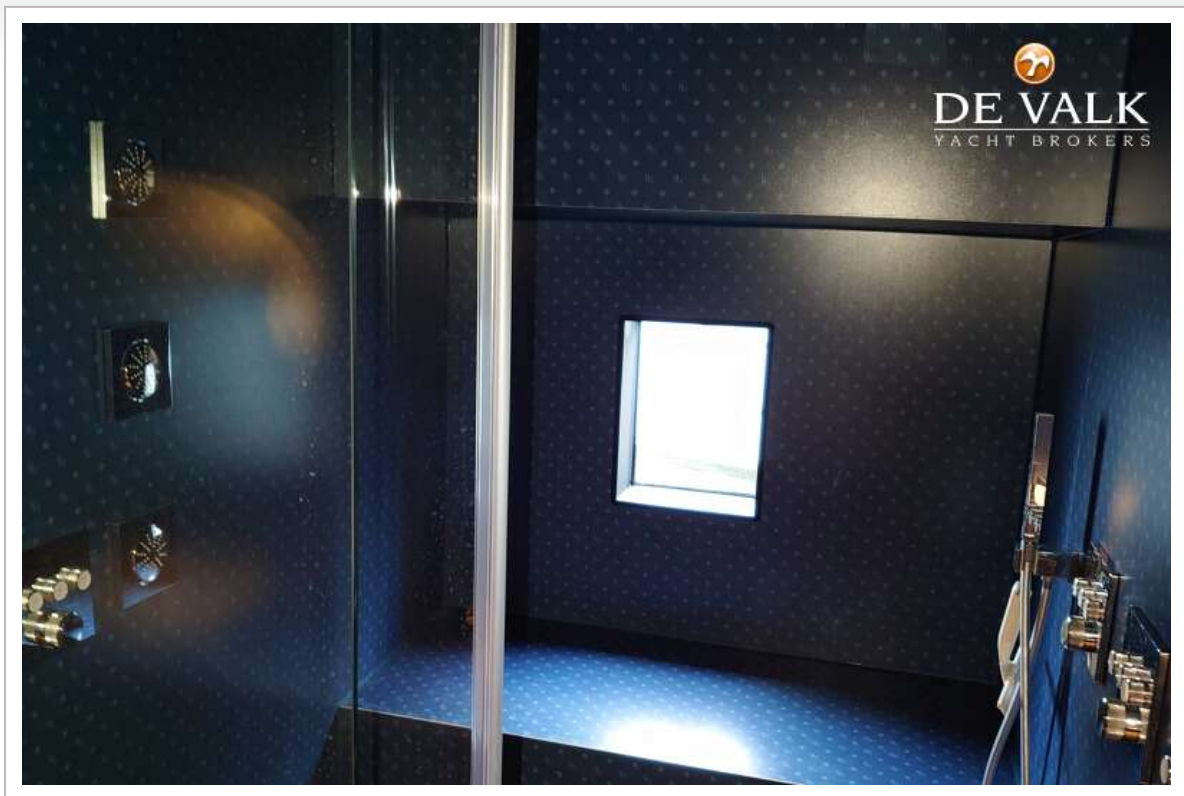
CRUISING HOME TRAVELLER XL

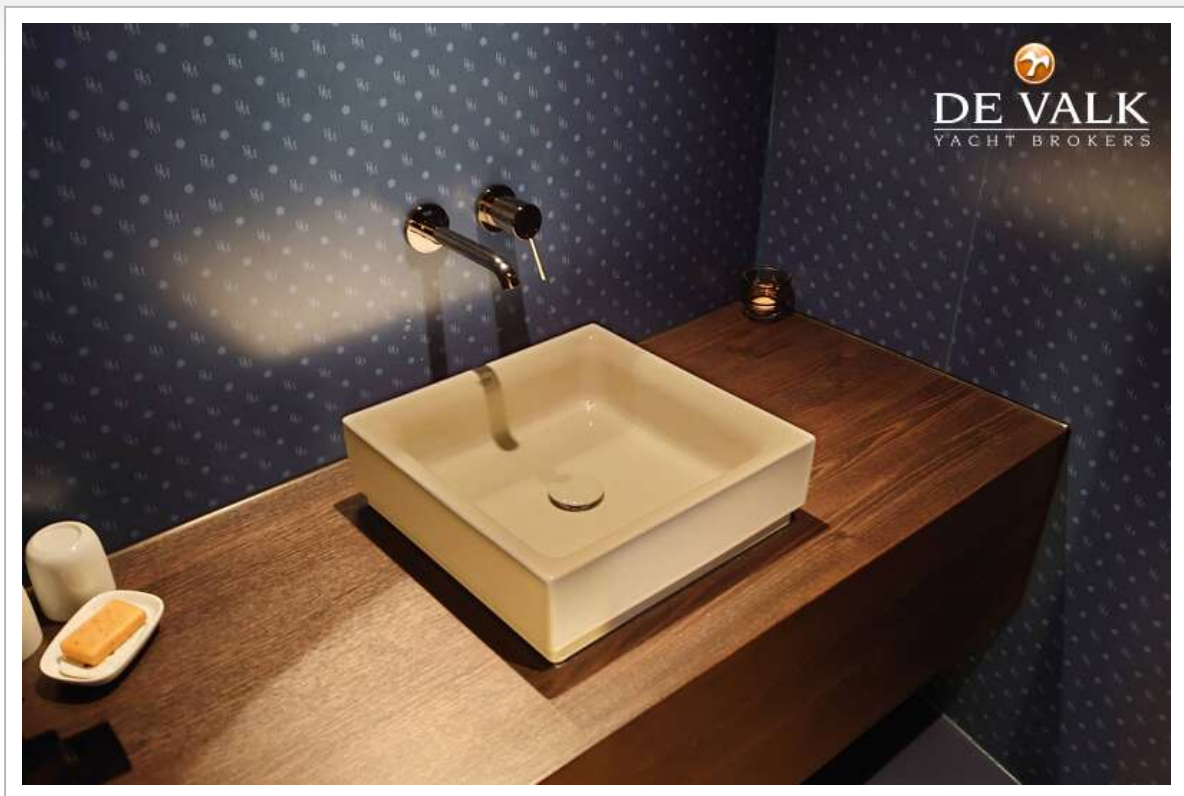


CRUISING HOME TRAVELLER XL









CRUISING HOME TRAVELLER XL

