



BOTTER TRAWLER

BOTTER TRAWLER

BROKER'S COMMENTS

The perfect live aboard for the adventurous family, offering a lot of living space! A very sturdy steel Northsea Botter converted into a pleasure craft, sleeping 8. From the spacious pilothouse go down to the decksaloon with 180deg. views. Below deck is a large living space with large galley and bar on S.B. and a dining room and TV room on P.S. Further forward is a storage room a bathroom and a 6 berth cabin. From pilothouse going aft there is a large master cabin and access to the engine room. The dining room can be converted back into an extra cabin. Ideal for a large family!

Reinoud Bicker Caarten

SPECIFICATIONS

Dimensions	15.00 x 5.40 x 2.00 (m)	Builder	
Built	1934	Cabins	2
Material	Steel	Berths	8
Engine(s)	1 x Volvo Penta TD100A diesel	Hp/Kw	109.00 (hp), 80.22 (kw)
Asking price	€ 75.000 (VAT Exempt)	Lying	at sales office

CONTACT

Sales office	De Valk Portugal	Telephone	+351 308 812321
Address	Edifício Administrativo - Ponta da Areia 8500 - 345 Portimão PT	E-mail	portugal@devalk.nl

DISCLAIMER

These particulars are given in good faith as supplied but cannot be guaranteed.



BOTTER TRAWLER

GENERAL

Model	BOTTER TRAWLER
Type	motor yacht
LOA (m)	15,00
Beam (m)	5,40
Draft (m)	2,00
Headroom (m)	1,85
Year built	1934
Country	The Netherlands
Displacement (t)	80
Ballast (tonnes)	cast iron 3
Gross tonnage	80
CE norm	A
Hull material	steel
Hull colour	black
Hull thickness (mm)	8mm
Hull shape	round-bilged
Superstructure material	steel
Deck plate thickness (mm)	5 to 8mm
Deck material	steel
Deck finish	non-skid paint
Superstructure deck finish	paint
Cockpit deck finish	non-skid paint
Antifouling (year)	2023
Window frame	wood
Window material	tempered glass RAFA
Deckhatch	5
Portholes	steel 13
Insulation	rockwool Complete hull
Fuel tank (litre)	steel 3000L
Fuel tank 2 (litre)	steel 3000L



BOTTER TRAWLER

Level indicator (fuel tank)	yes
Fuel daytank (litre)	steel 120L
Level indicator (daytank)	yes
Freshwater tank (litre)	steel 1600L
Blackwater tank (litre)	steel 1500L
Blackwater tank extraction	deck extraction
Wheel steering	hydraulic
Inside helm position	yes
More info on paintwork	2023 hull above waterline 2024 deck and superstructure

ACCOMMODATION

Cabins	2
Berths	8
Interior	oak
Layout	Aft a master cabin with ensuite bathroom and access to engine room, accessible from pilothouse. forward from pilothouse is a light decksaloon with 180 degree views. Further down is a large living space with an extensive galley+bar and dining room, further forward a storage room, small bathroom and large cabin with 6 bunkbeds.
Floor	vinyl Industrial quality
Pilot house	yes
Deck saloon	yes
Saloon	yes
Headroom saloon (m)	1.90m
Heating	central heating
Navigation center	in pilot house
Chart table	in pilot house
Aft Cabin	yes
Dining room	yes
Galley	yes
Countertop	granite



BOTTER TRAWLER

Sink	stainless steel Double
Cooker	calor gas 1x induction 1x gas 4 burner
Extractor	yes
Microwave/oven combi	yes
Fridge	yes
Freezer	yes
Hot water system	geyser on Calor Gas
Water pressure system	electrical
Kettle	yes
Hot water tap	yes
Coffee maker	yes
Crockery	12 pax
Owners cabin	double bed Aft cabin
Bed length (m)	2m x 1,4m
Wardrobe	hanging and shelves
Bathroom	en suite
Toilet	en suite
Toilet system	electric
Wash basin	in the bathroom
Shower	en suite
Guest cabin 1	bunk bed 6x
Bed length (m)	From 1,8m to 2m
Wardrobe	shelves
Bathroom	en suite
Toilet	en suite
Toilet system	electric
Wash basin	in the bathroom
Shower	en suite

MACHINERY

No of engines	1
---------------	---



BOTTER TRAWLER

Make	Volvo Penta
Type	TD100A
HP	109
kW	80.22
Fuel	diesel
Year installed	1960
Year of overhaul	2020
Maximum speed (kn)	8
Cruising speed (kn)	6
Consumption (l/hr)	11
Range (nm)	3000
Engine cooling system	freshwater heat exchanger
Drive	shaft
Shaft seal	yes
Engine controls	bowden cable
Gearbox	hydraulic
Propeller type	fixed
Propeller blades	3 bronze
Propeller shaft material	stainless steel
Shaft lubrication	grease
Electric bilge pump	yes
Electrical installation	380/10kva, 220/7kva, 14V, 12V
Generator	dry exhaust 2021
Running hours generator	yes
Start battery	2x75Ah
Service battery	4x 120Ah
Electric engine battery	50Ah
Windlass battery	On engine
Battery monitor	yes
Battery charger	Victron
Inverter	Vitron
Diode battery combiners	yes



Shorepower yes

NAVIGATION

Compass yes

Multi control display Garmin GPS, AIS, Radar

Depth sounder/log yes

Fish finder yes

VHF yes

Autopilot Garmin

Rudder angle indicator 2x

Radar yes

GPS yes

Radar/GPS/plotter yes

Personal computer yes

Electronic chart(s) NL, UK, France, Spain, Portugal

AIS transceiver yes

Radio receiver yes

Transmitter yes

EPIRB yes

Navigation lights yes

Searchlight yes

EQUIPMENT

Fixed windscreen yes

Cockpit cushions yes

Cockpit table yes

Gangway yes

Deck shower yes

Anchor yes

Anchor chain 1x 22mm 70m 1x 17mm 70m

Anchor 2 yes

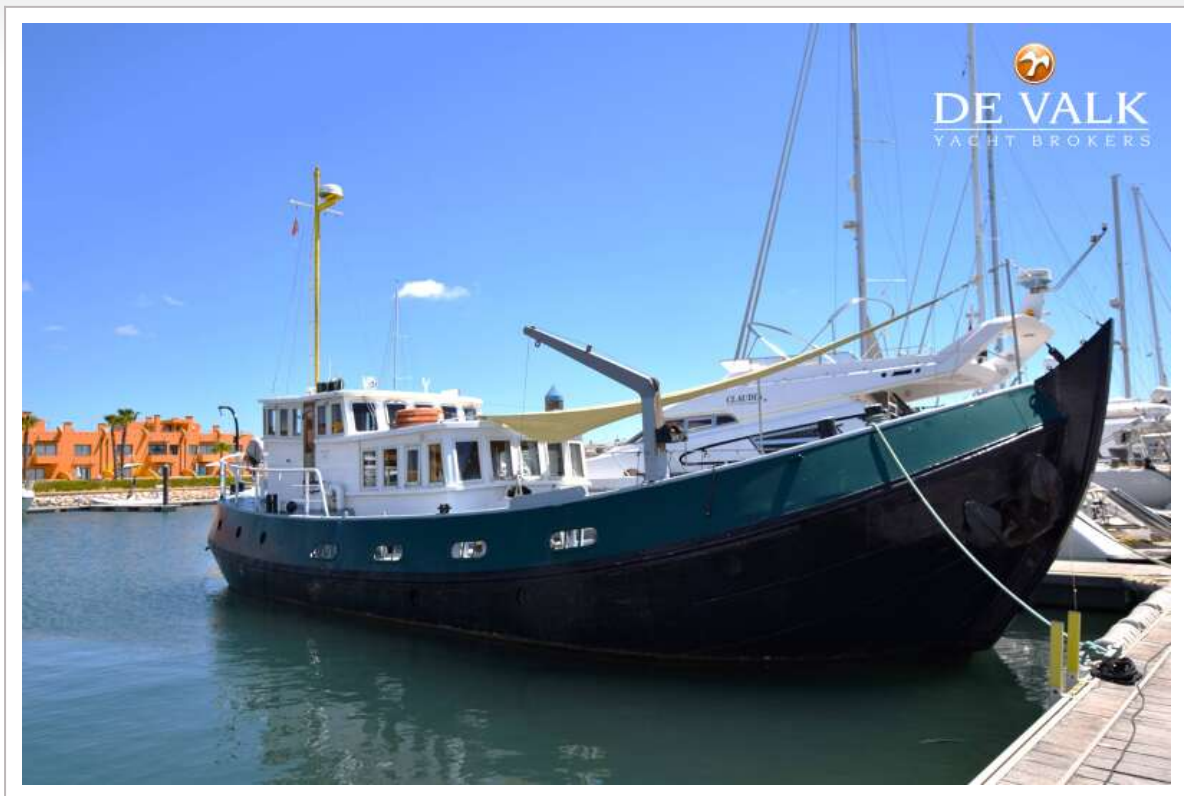


BOTTER TRAWLER

Windlass	electrical
Deck wash	with pump 20m hoze
Deck crane	manual
Life raft	container 8
Lifejackets	3x inflatable 15
Lifebuoy	yes
Wiper	yes
Clearview window	yes
Binocular	yes
Radar reflector	yes
Fenders	5
Mooring lines	4x25m = 1x 100m
Spare parts	V belts for engine, filters
Tools	yes
TV	yes
TV receiver	MAG
DVD player	yes
iPod connection	USB on bridge
Clock - barometer	yes
Fire extinguisher	3x
Extinguisher in engine room	yes



BOTTER TRAWLER



BOTTER TRAWLER



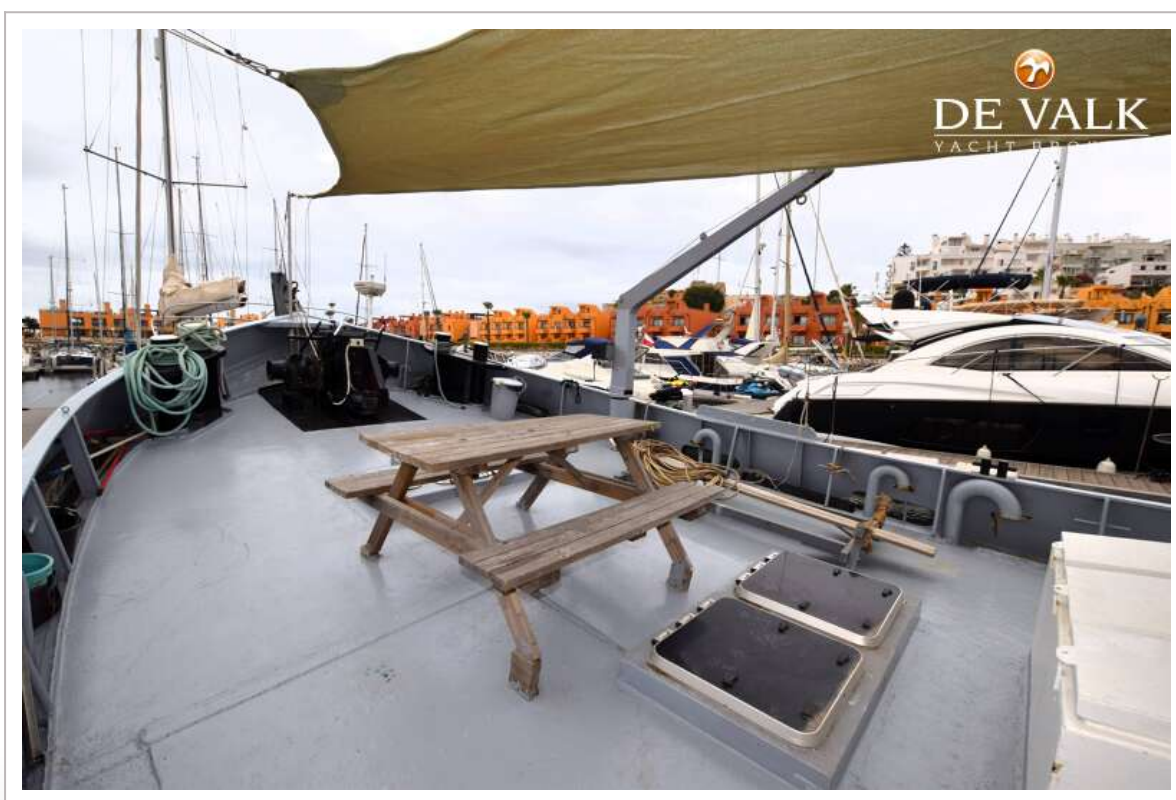
BOTTER TRAWLER



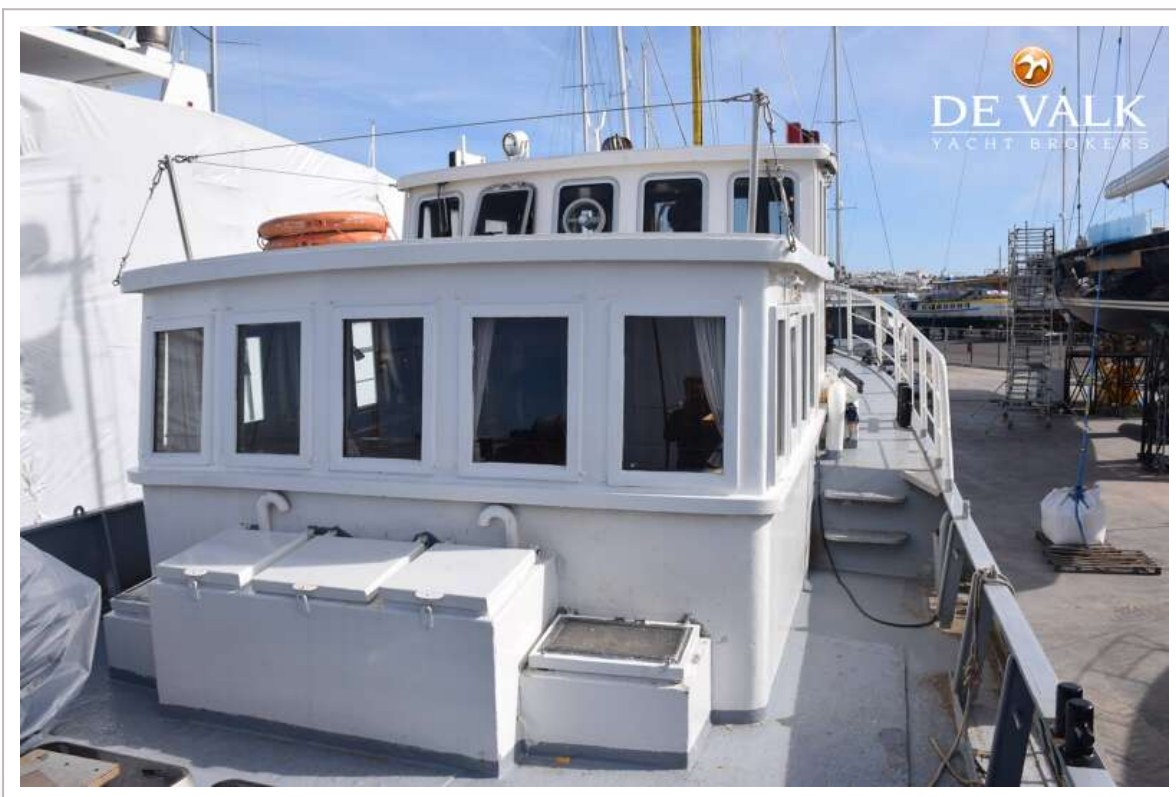
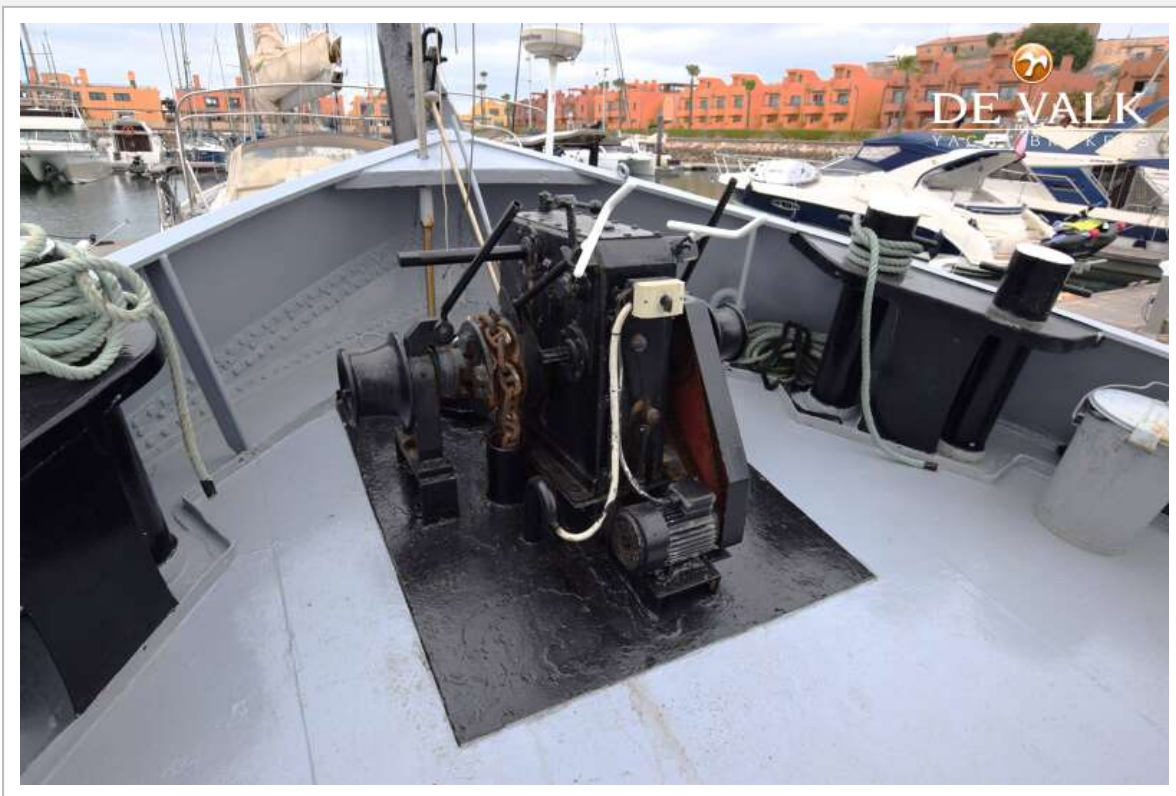
BOTTER TRAWLER



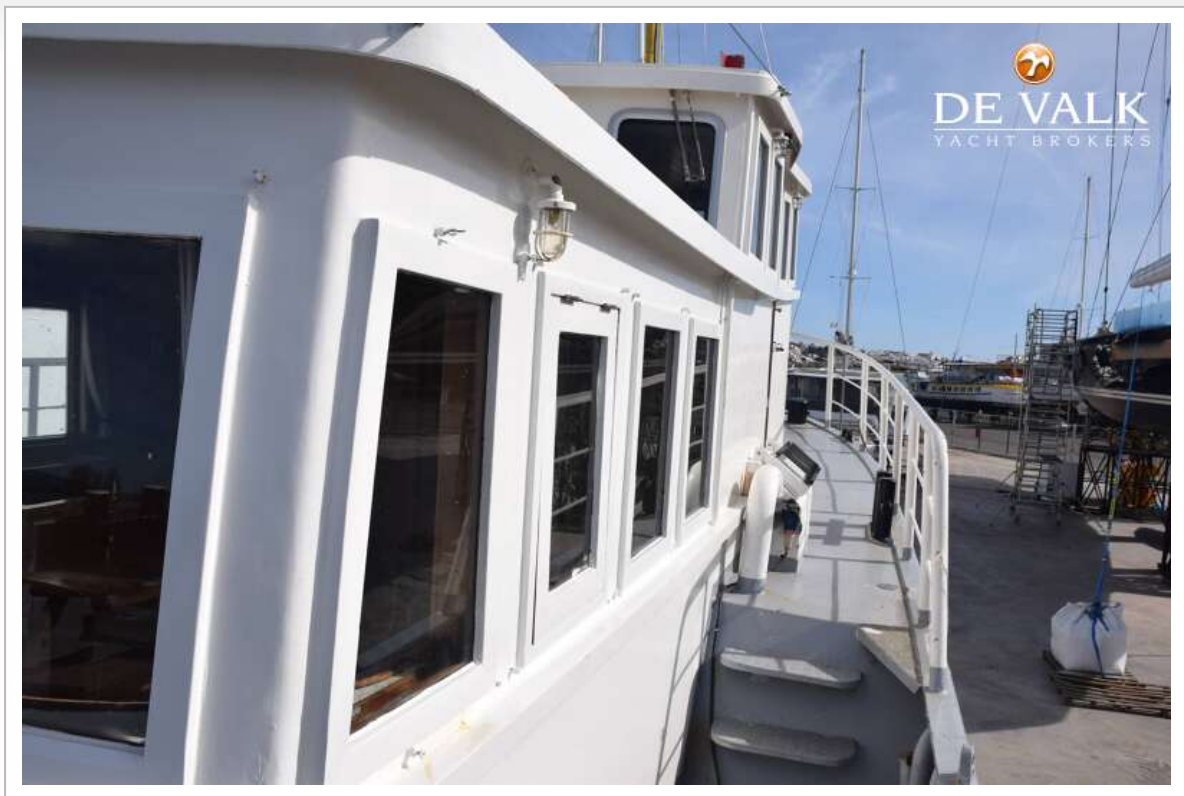
BOTTER TRAWLER



BOTTER TRAWLER



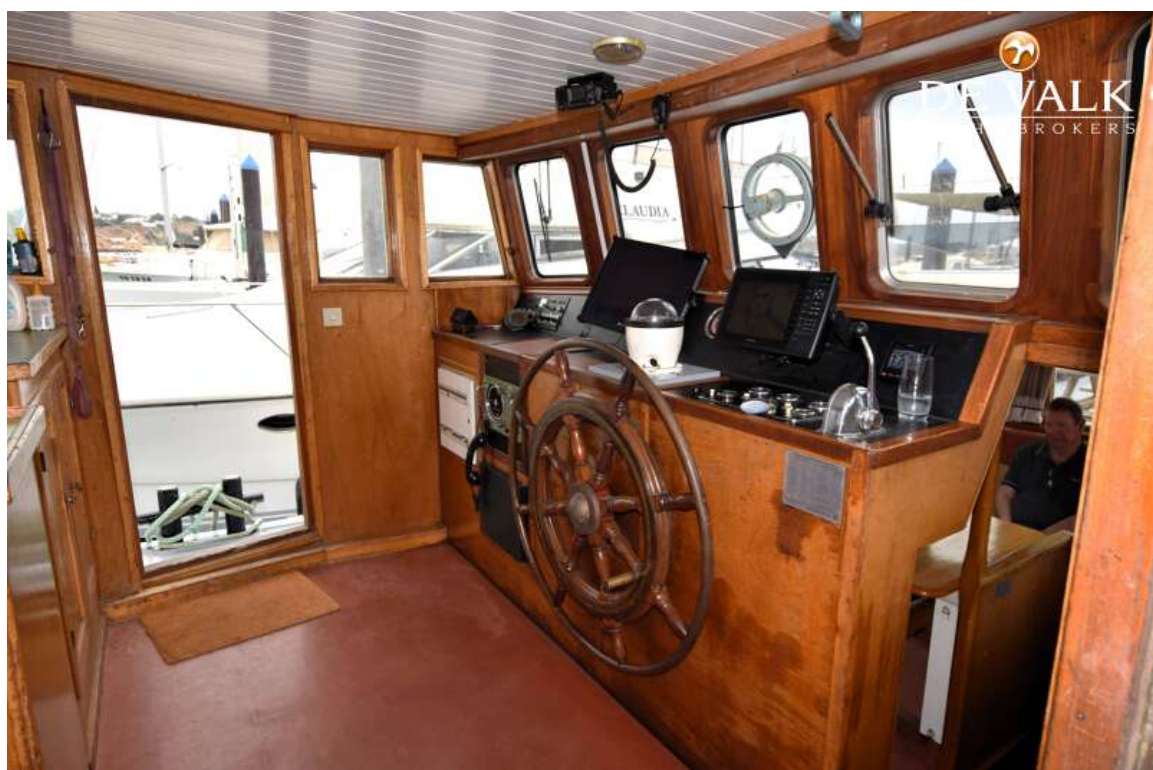
BOTTER TRAWLER



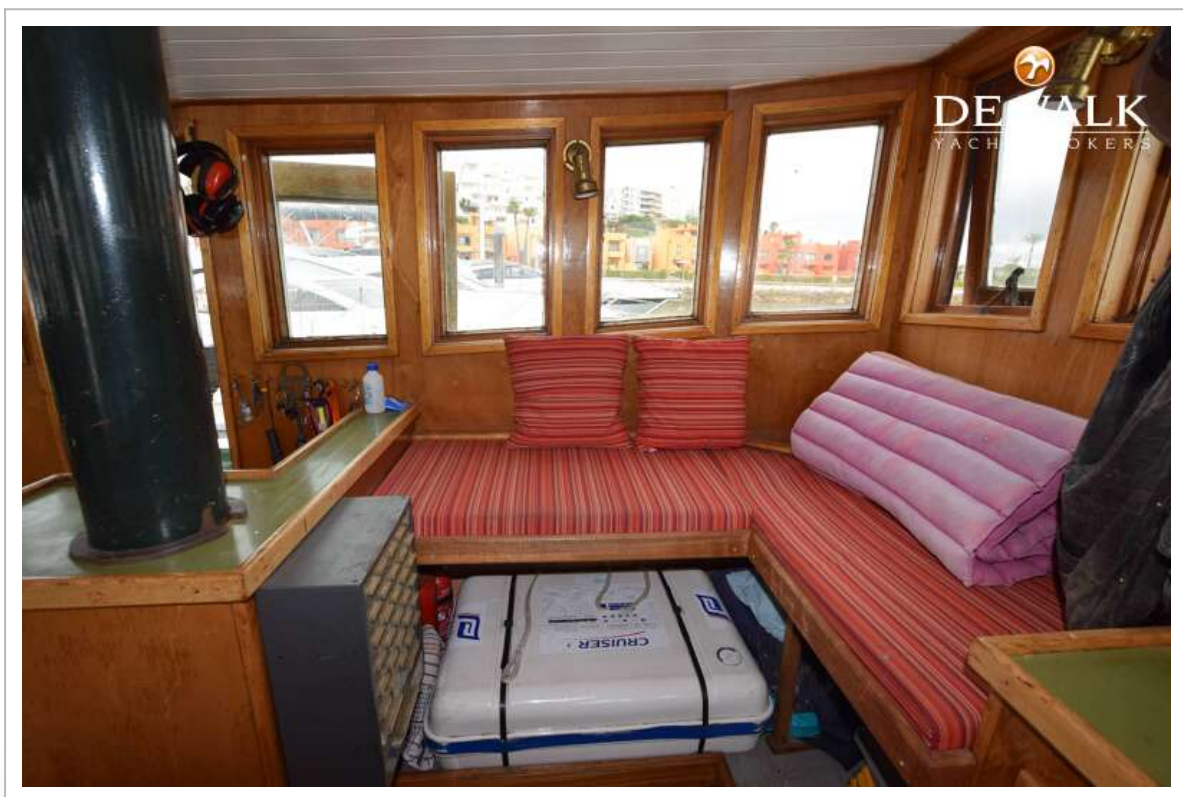
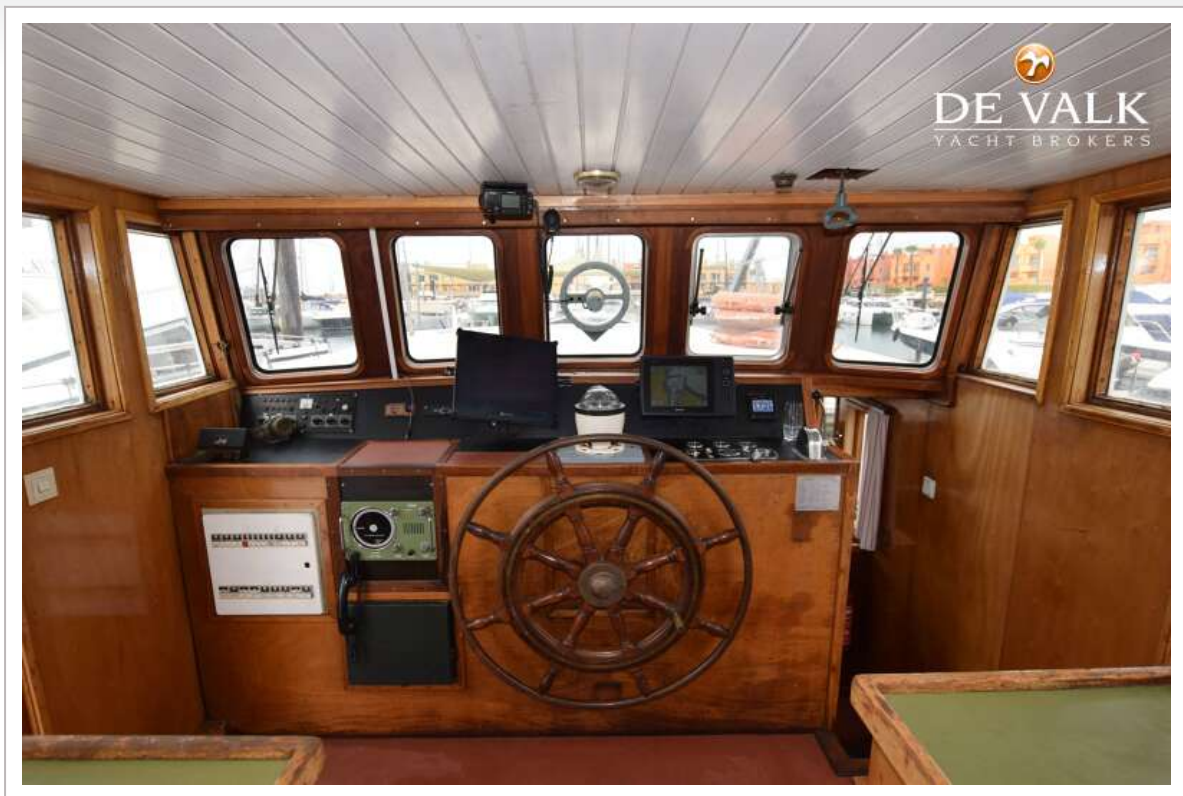
BOTTER TRAWLER



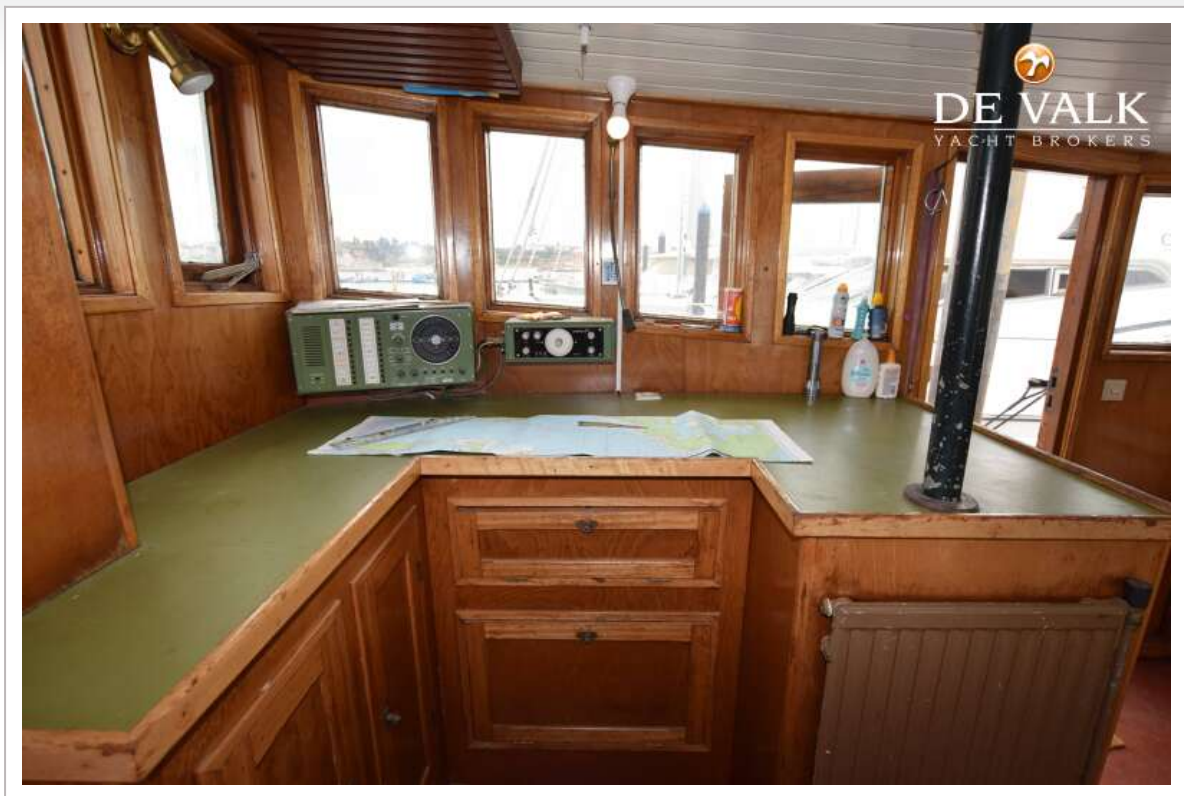
BOTTER TRAWLER



BOTTER TRAWLER



BOTTER TRAWLER



BOTTER TRAWLER



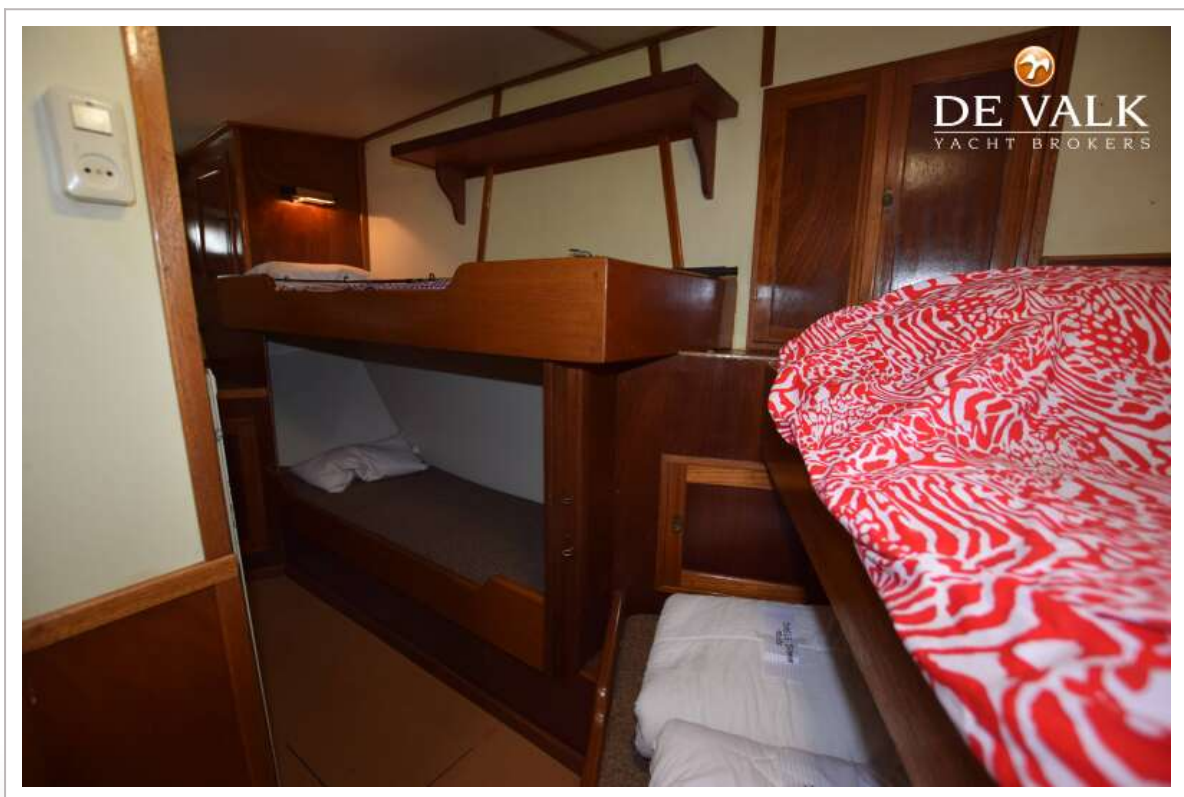
BOTTER TRAWLER



BOTTER TRAWLER



BOTTER TRAWLER



BOTTER TRAWLER



BOTTER TRAWLER



BOTTER TRAWLER

