



## HALLBERG RASSY 37

# HALLBERG RASSY 37

## BROKER'S COMMENTS

Following in the footsteps of the hugely successful 36 model, the 37 model by German Frers was the next logical step for Hallberg Rassy. More spacious, striking design, better performance, etc. The Hallberg Yard is the best at building high quality center cockpit yachts. This 37 model comes with a lot of recent upgrades like sails, electronics, equipment etc. With 3 electric winches this is sailing at fingertip control. And the fully battened mainsail is a guarantee for trouble free and optimum performance and a joy to sail in all circumstances. Dry stored every winter and well maintained.

*Marc Weijenberg*

## SPECIFICATIONS

<b>Dimensions</b>	11.32 x 3.55 x 1.90 (m)	<b>Builder</b>	Hallberg Rassy Varv AB
<b>Built</b>	2005	<b>Cabins</b>	2
<b>Material</b>	GRP	<b>Berths</b>	7
<b>Engine(s)</b>	1 x Yanmar 4JH4E diesel	<b>Hp/Kw</b>	54.00 (hp), 39.74 (kw)
<b>Asking price</b>	sold (VAT )	<b>Lying</b>	The Netherlands

## CONTACT

<b>Sales office</b>	De Valk Thuishaven	<b>Telephone</b>	+31 35 5829042
<b>Address</b>	Peperstraat 7 1411 PX Naarden NL	<b>E-mail</b>	thuishaven@devalk.nl

## DISCLAIMER

These particulars are given in good faith as supplied but cannot be guaranteed.



## GENERAL

Model	HALLBERG RASSY 37
Type	sailing yacht
LOA (m)	11,32
LWL (m)	10,20
Beam (m)	3,55
Draft (m)	1,90
Air draft (m)	17,20
Headroom (m)	1,92
Year built	2005
Launched	2006
Builder	Hallberg Rassy Varv AB
Country	Sweden
Designer	German Frers
Displacement (t)	7,5
Ballast (tonnes)	lead 3,2
CE norm	A
Hull material	GRP
Hull colour	white
Hull shape	round-bilged
Keel type	bulb keel
Superstructure material	GRP
Rubbing strake	yes
Deck material	GRP
Deck finish	teak
Superstructure deck finish	non-skid moulded in
Cockpit deck finish	teak
Dorades	yes
Window frame	aluminium
Window material	polycarbonate
Deckhatch	4 x



<b>Portholes</b>	aluminium
<b>Fuel tank (litre)</b>	stainless steel 225 +115
<b>Freshwater tank (litre)</b>	stainless steel 245 + 155
<b>Blackwater tank (litre)</b>	stainless steel
<b>Blackwater tank extraction</b>	deck extraction + uw line
<b>Wheel steering</b>	cable steering Lewmar Constellation
<b>Emergency tiller</b>	yes
<b>More info on hull</b>	uw body sanded, 2 x epoxy coating (2019), antifouling 2024
<b>More info on paintwork</b>	new painted blue striping on hull and superstructure 2024, seacocks renewed in 2016.

## ACCOMMODATION

<b>Cabins</b>	2
<b>Berths</b>	7
<b>Interior</b>	mahogany
<b>Floor</b>	teak and holly Carpets
<b>Saloon</b>	with L-shape settee and fold up backrests
<b>Headroom saloon (m)</b>	1,92
<b>Heating</b>	diesel ducted hot air Webasto Airtop 3500D
<b>Chart table</b>	yes
<b>Aft Cabin</b>	yes
<b>Convertible berth</b>	2 x in salon
<b>Galley</b>	yes
<b>Countertop</b>	yes
<b>Sink</b>	stainless steel 2 x
<b>Cooker</b>	calor gas Eno (2017)
<b>Oven</b>	Eno (2017)
<b>Fridge</b>	Isotherm (2017)
<b>Hot water system</b>	220V + engine 40 ltrs
<b>Water pressure system</b>	electrical
<b>Manual and/or foot pump</b>	yes



# HALLBERG RASSY 37

Owners cabin	double bed + single bed
Bed length (m)	2,00 x 1,40 mtr + 2,00 x 0,75 mtr
Wardrobe	hanging and shelves
Bathroom	shared I
Toilet	shared
Toilet system	manual
Wash basin	in the bathroom
Shower	shared
Guest cabin 1	v-bed
Bed length (m)	2 x 2,00 x 0,62 mtr
Wardrobe	hanging/drawers/shelves
Extra info	new upholstery (2018) and led interior lighting

## MACHINERY

No of engines	1
Make	Yanmar
Type	4JH4E
HP	54
kW	39.74
Fuel	diesel
Year installed	2005
Maximum speed (kn)	8
Cruising speed (kn)	6,5
Consumption (l/hr)	3
Engine hours	1700
Engine cooling system	freshwater heat exchanger
Drive	shaft
Shaft seal	Volvo Penta
Engine controls	bowden cable
Gearbox	mechanical
Bowthruster	electric Lewmar 4,5kW (185tt) + footswitches (2024)



<b>Exhaust</b>	watercooled
<b>Propeller type</b>	feathering Gori
<b>Propeller blades</b>	3
<b>Propeller shaft material</b>	stainless steel
<b>Shaft lubrication</b>	water
<b>Manual bilge pump</b>	yes
<b>Electrical installation</b>	12v/220v
<b>Start battery</b>	2 x 95ah (2023)
<b>Service battery</b>	2 x 180ah (2019)
<b>Bowthruster battery</b>	2 x 125ah (2019)
<b>Battery monitor</b>	2 x Mastervolt (2024)
<b>Battery charger</b>	Mastervolt Ivo smart 12v/50amp
<b>Shorepower</b>	with cable
<b>Extra info</b>	rope cutter on prop-shaft

## NAVIGATION

<b>Compass</b>	Silva (2024)
<b>Electric compass</b>	via autopilot
<b>Depth sounder</b>	Raymarine ST60
<b>Log</b>	Raymarine ST60
<b>Windset</b>	Raymarine ST60 (mast unit (2023)
<b>VHF</b>	Raymarine Ray240E + cockpit horn
<b>Autopilot</b>	Raymarine ST6002
<b>Rudder angle indicator</b>	via autopilot
<b>Radar</b>	Raymarine (2018)
<b>GPS</b>	yes
<b>Plotter</b>	Raymarine ES127MFD + charttable repeater (2018)
<b>Navtex</b>	Furuno NX300
<b>Electronic chart(s)</b>	1 x (2024)
<b>AIS transponder</b>	Raymarine Class B
<b>EPIRB</b>	(updated 2023)



Navigation lights incl. 3-color masthead light

## EQUIPMENT

Fixed windscreen	yes
Sprayhood	(2017)
Cockpit cover	(2018)
Cockpit table	yes
Bathing platform	yes
Boarding ladder	stainless steel
Deck shower	hot + cold fresh water
Anchor	Delta
Anchor chain	40 mtr
Anchor 2	Delta
Windlass	electrical Lewmar (+remote control)
Capstan	Lewmar
Sea railing	wire
Grab rail (superstructure)	teak
Pushpit	including two pensiodo seats
Pulpit	yes
Life raft	valise (or bag) Seagoo (2016)
Life raft (pers)	4 pers
Last life raft survey	(2024)
Lifebuoy	2 x
Danbuoy	1 x
Safety lines on deck	yes
Radar reflector	yes
Fenders	yes
Mooring lines	yes
Radio	Fusion (2023)
Cockpit speakers	(2023)
Speakers in salon	(2023)



Clock - barometer	yes
Fire extinguisher	3 x
Extra info	sea-drogue

## RIGGING

Rigging	sloop
Standing rigging	wire 2005
Brand mast	Seldén
Material mast	aluminium
Spreaders	2 x set
Mainsail cover	yes
Battcars	including Lazy Jacks and Lazy Bag/Main drop system
Fully battened mainsail	Elvström Vectran/Technora (2017)
High aspect	Elvström with UV strip
Genoa furler	Furlex
Code Zero	Furling (2023)
Gennaker	with rocon (2023)
Stormjib	(2023)
Reefing System	quick-one-line-reefing
Backstay adjuster	Hasselfors
Boomvang	mechanical Seldén Rodkicker
Primary sheet winch	2 x electric Lewmar 48ST (2018)
Secondary sheet winch	2 x Lewmar 16ST (2018)
Halyard winches	1 x electric Anderssen 34ST (2018)
Spi-pole	Seldén carbon
Gennaker pole	Stainless / rvs
Extra info	running rigging (2017/2024), aluminium turnbuckle covers





# HALLBERG RASSY 37



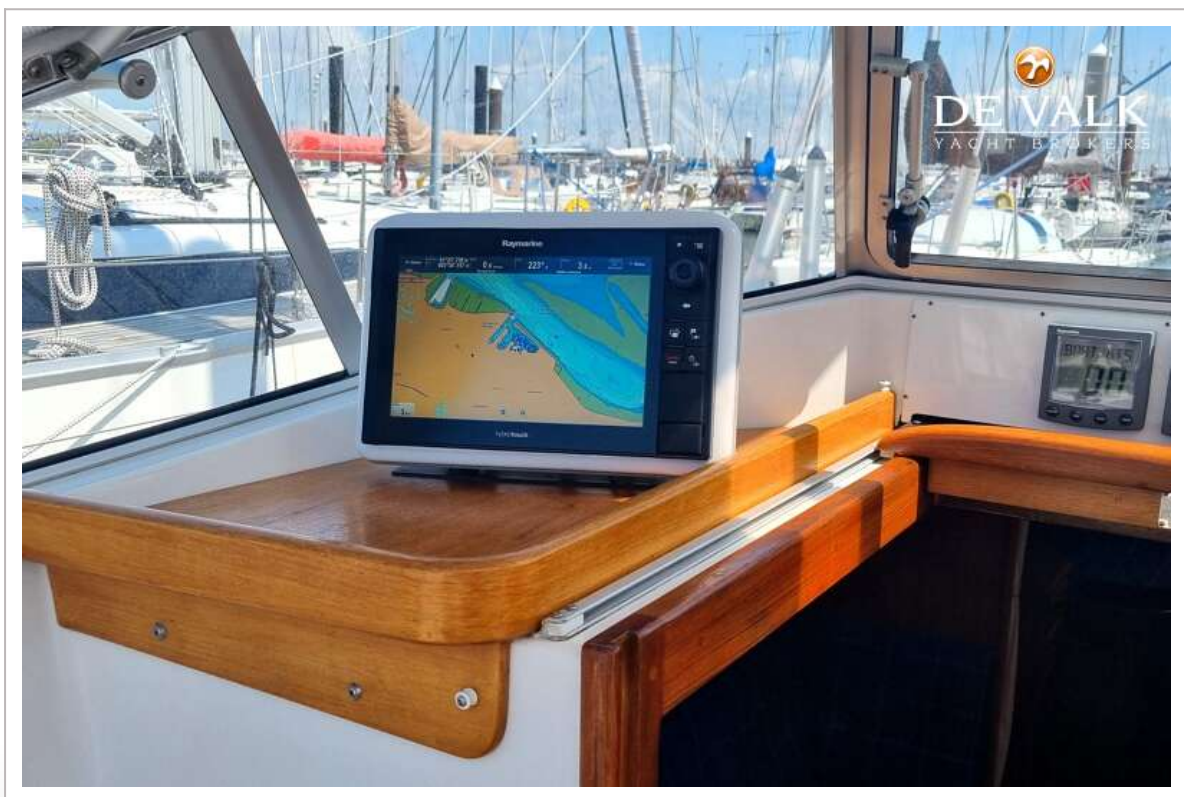


# HALLBERG RASSY 37

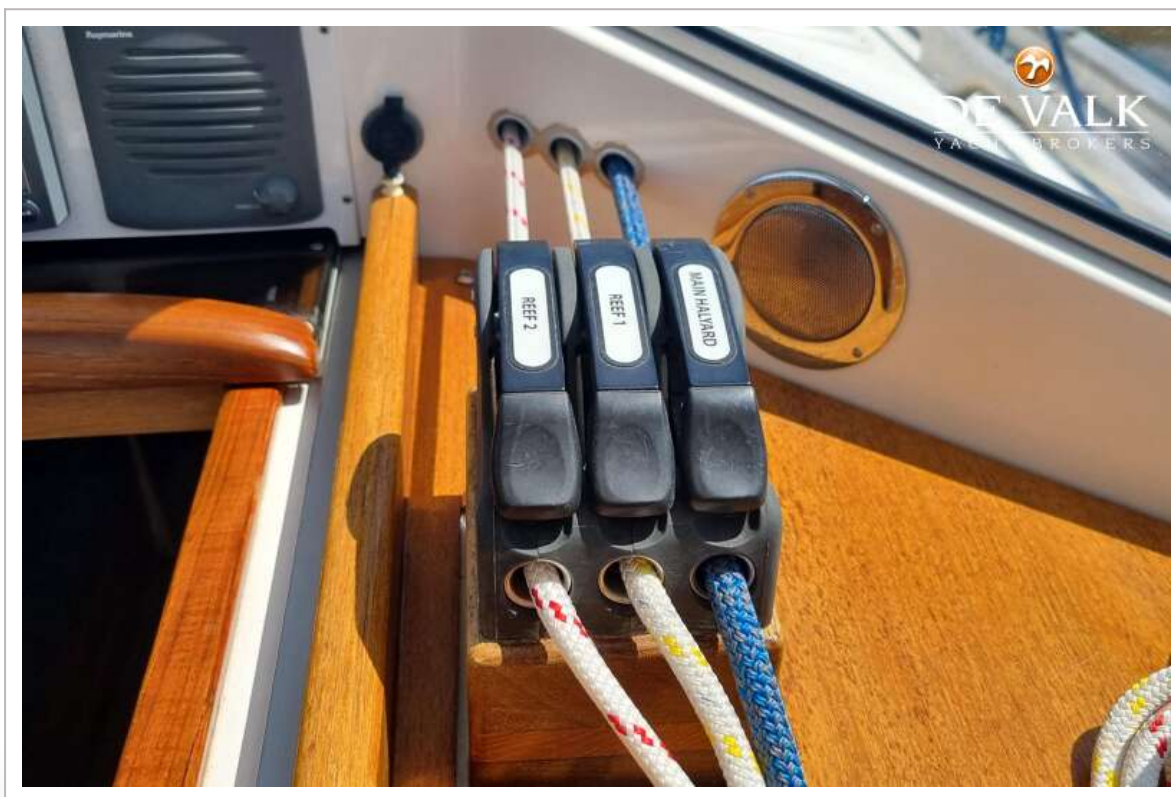




# HALLBERG RASSY 37



# HALLBERG RASSY 37





# HALLBERG RASSY 37



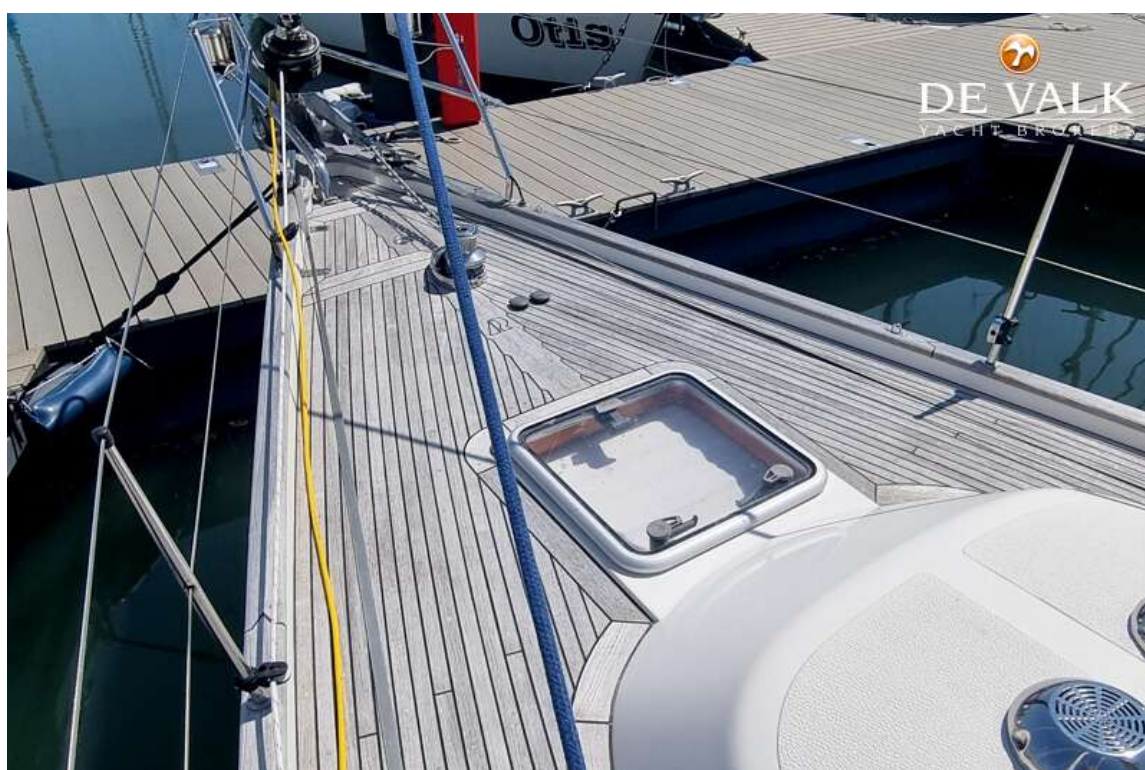
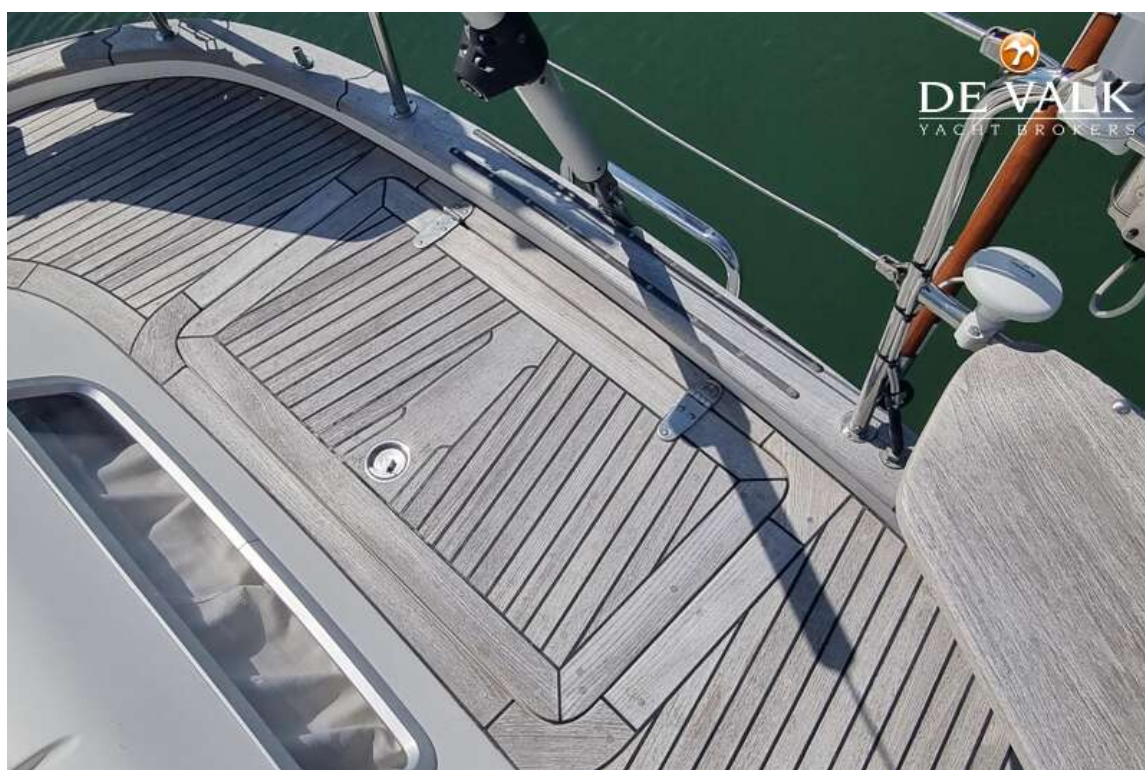


# HALLBERG RASSY 37



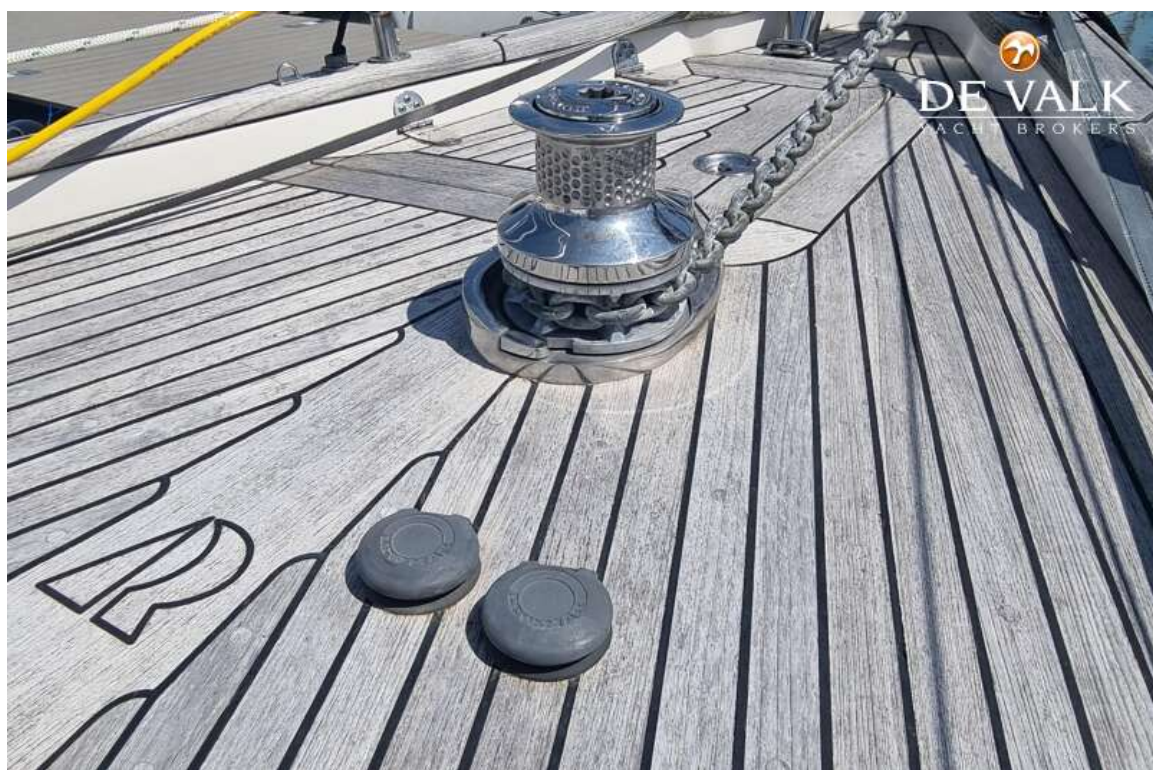


# HALLBERG RASSY 37



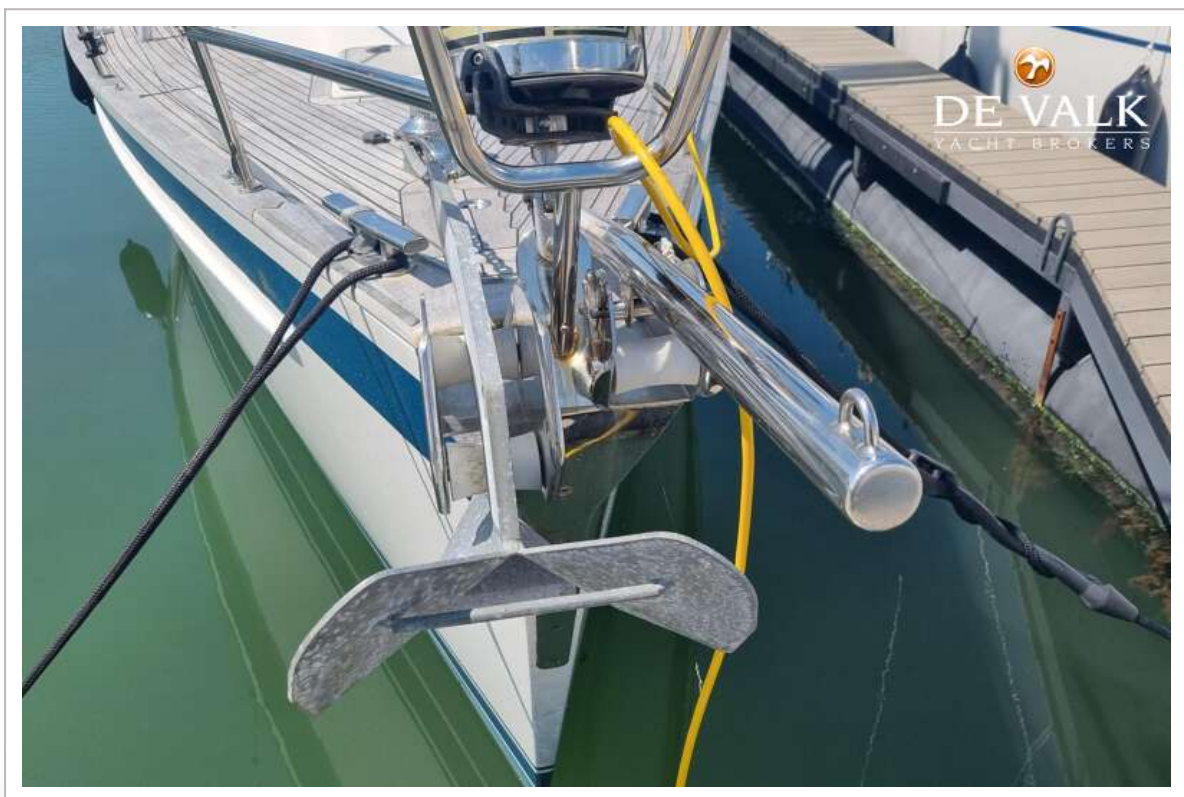
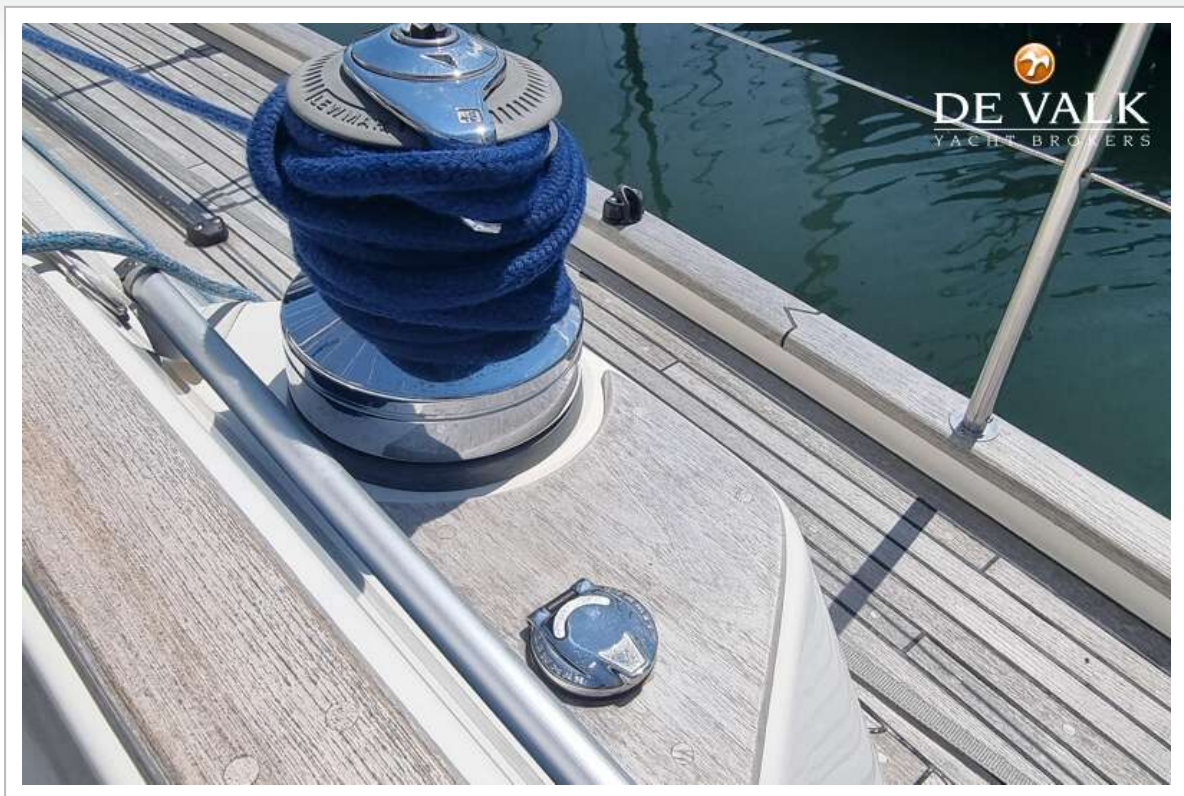


# HALLBERG RASSY 37





# HALLBERG RASSY 37

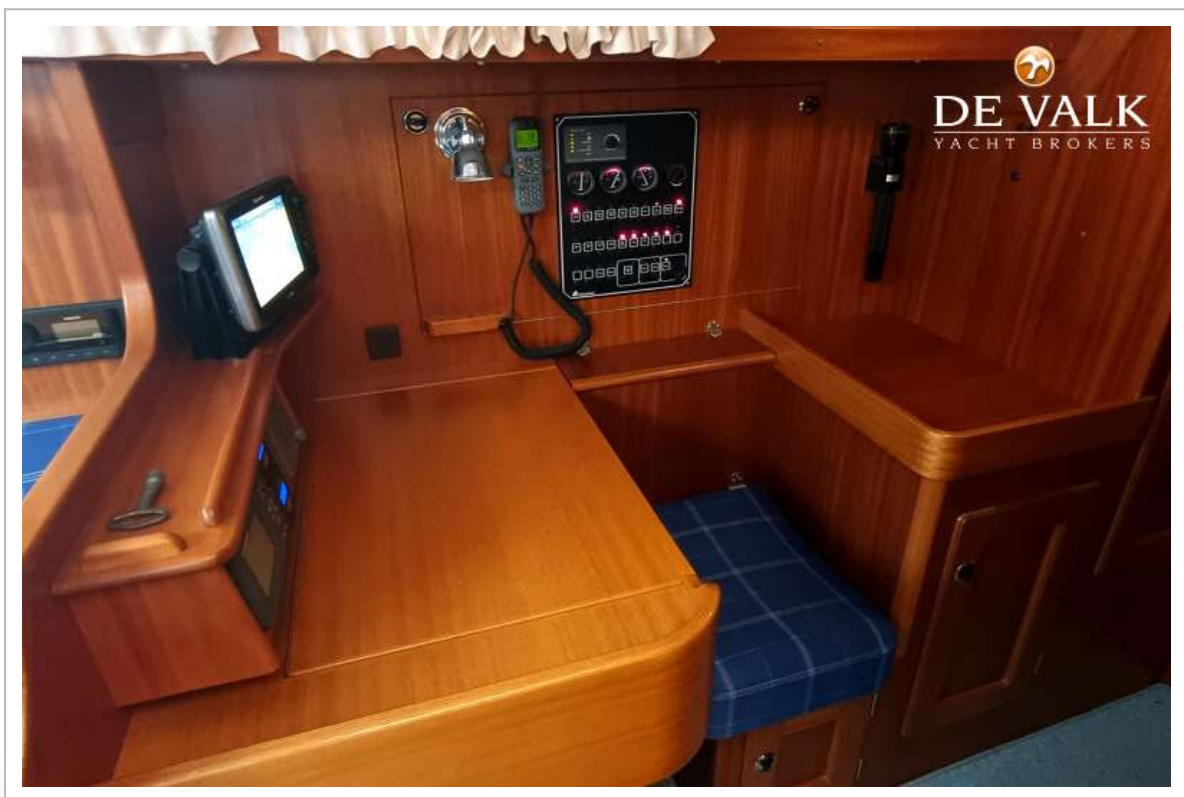
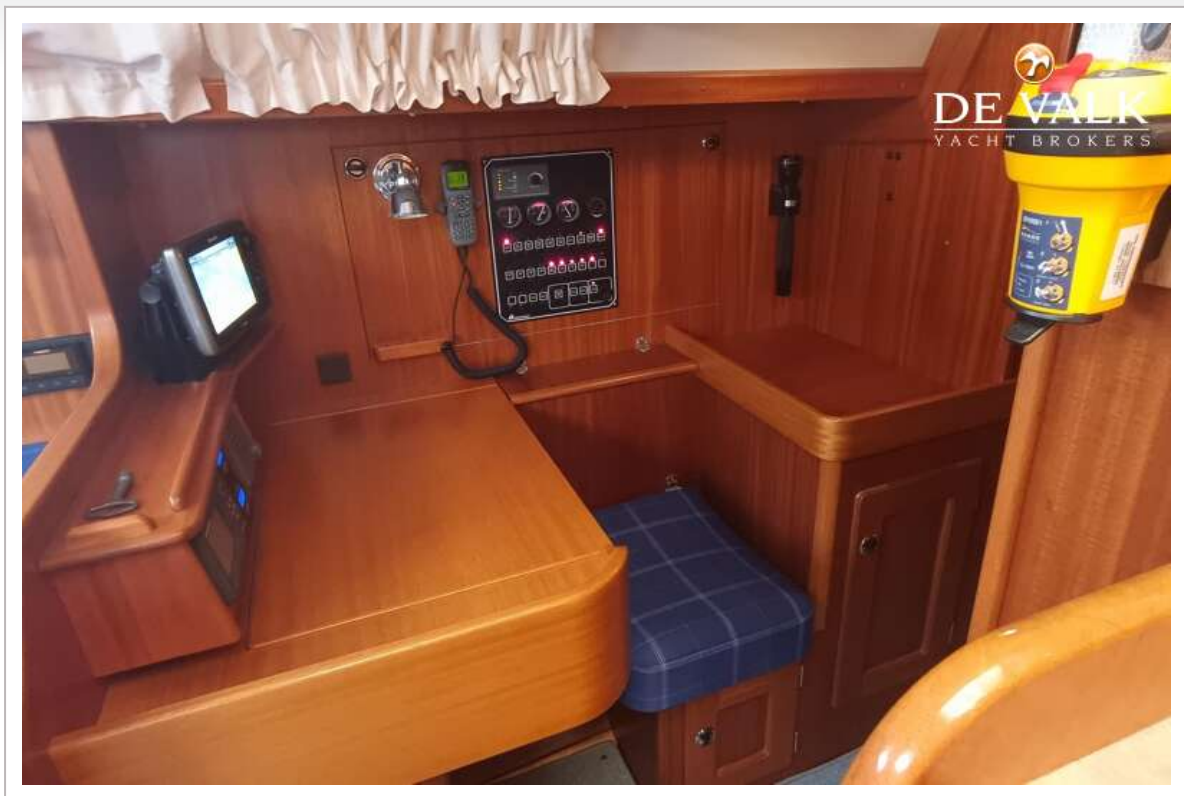




# HALLBERG RASSY 37



# HALLBERG RASSY 37





# HALLBERG RASSY 37

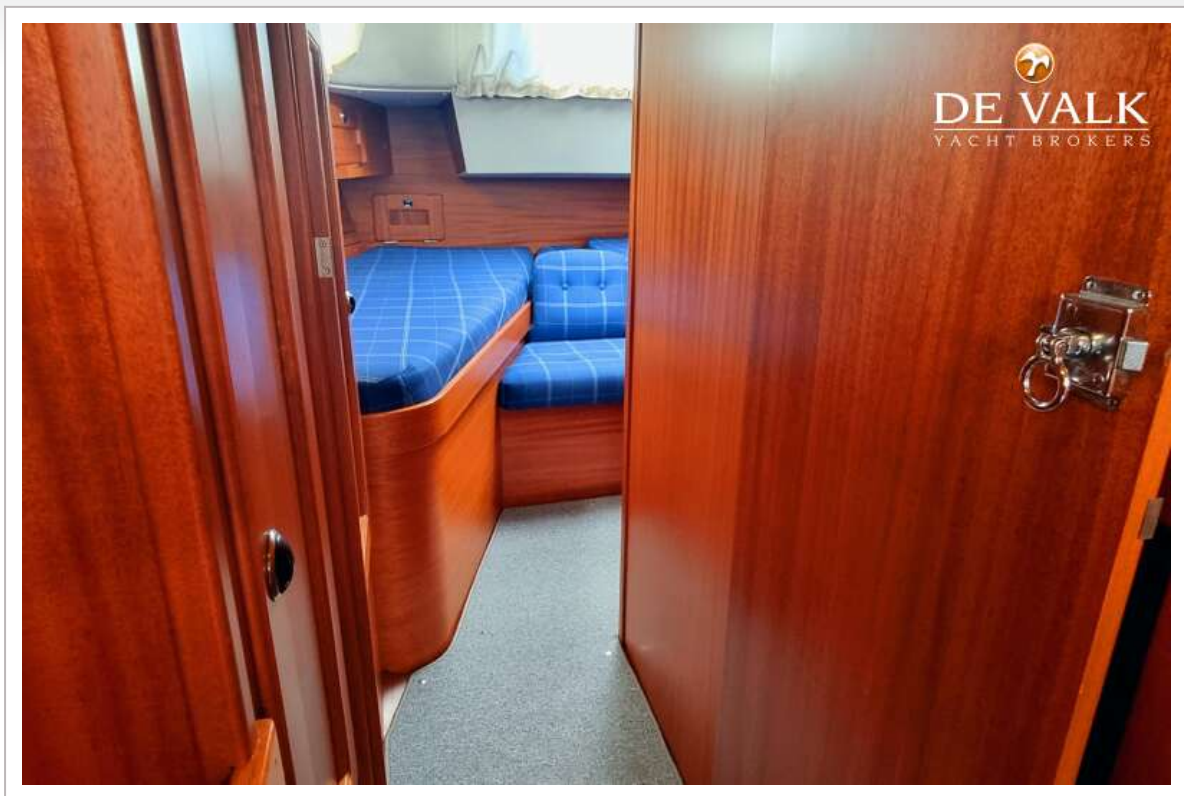


# HALLBERG RASSY 37

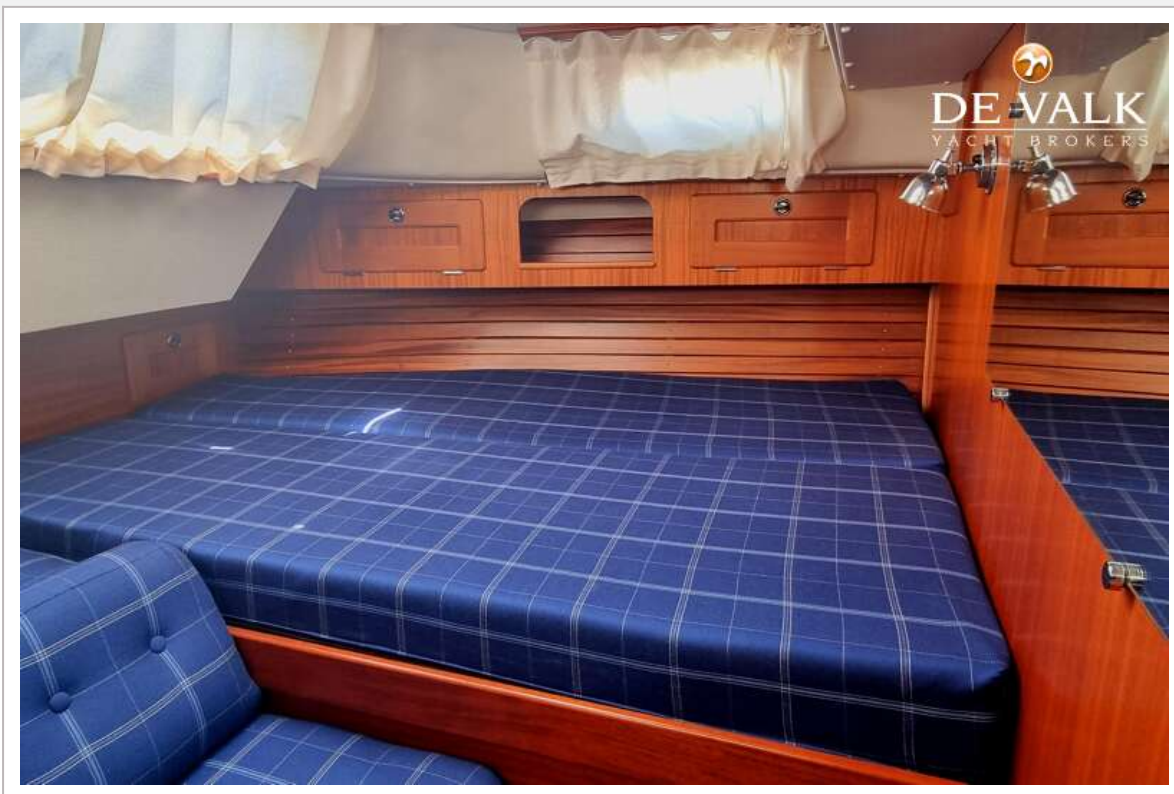




# HALLBERG RASSY 37

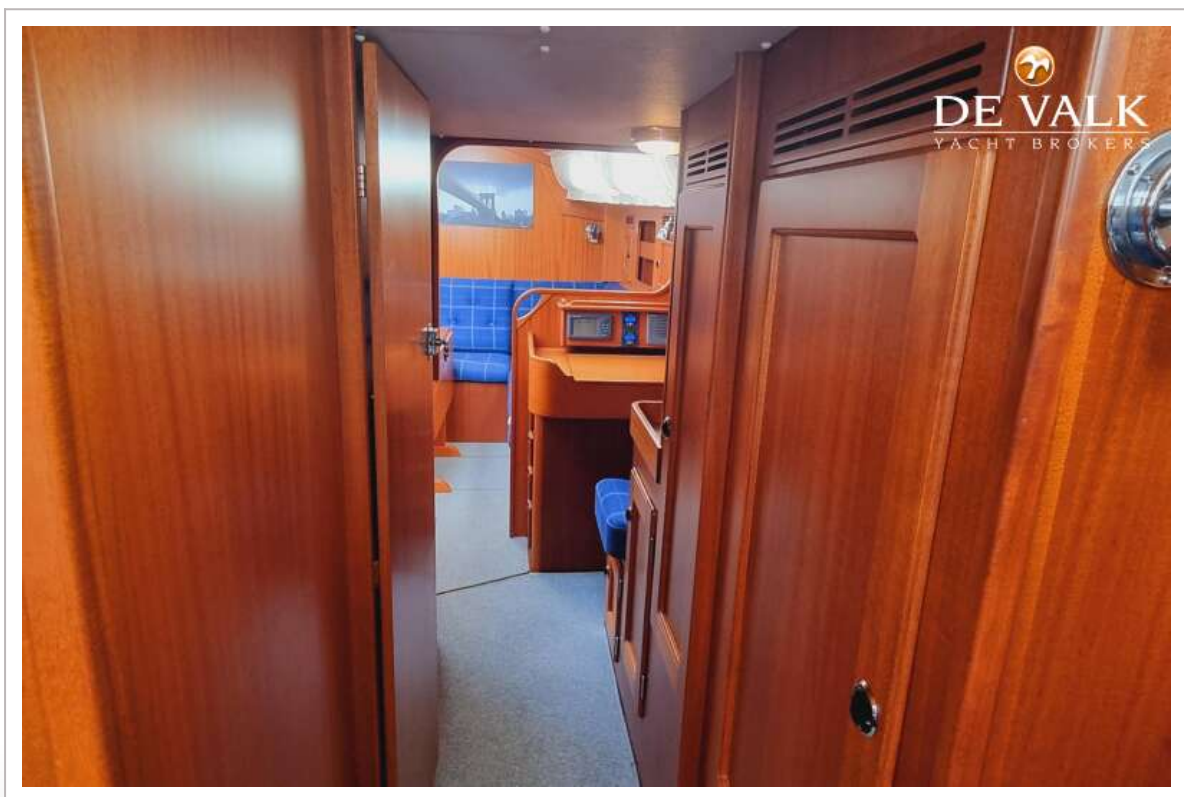


# HALLBERG RASSY 37



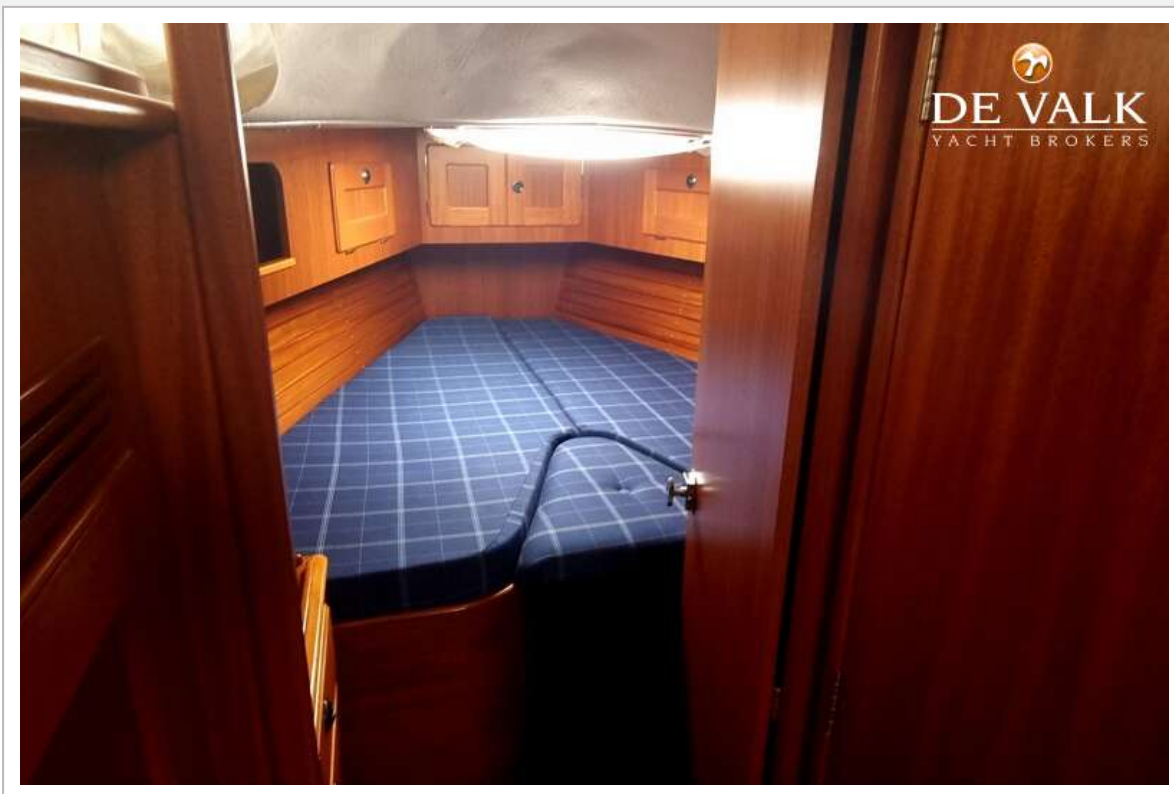


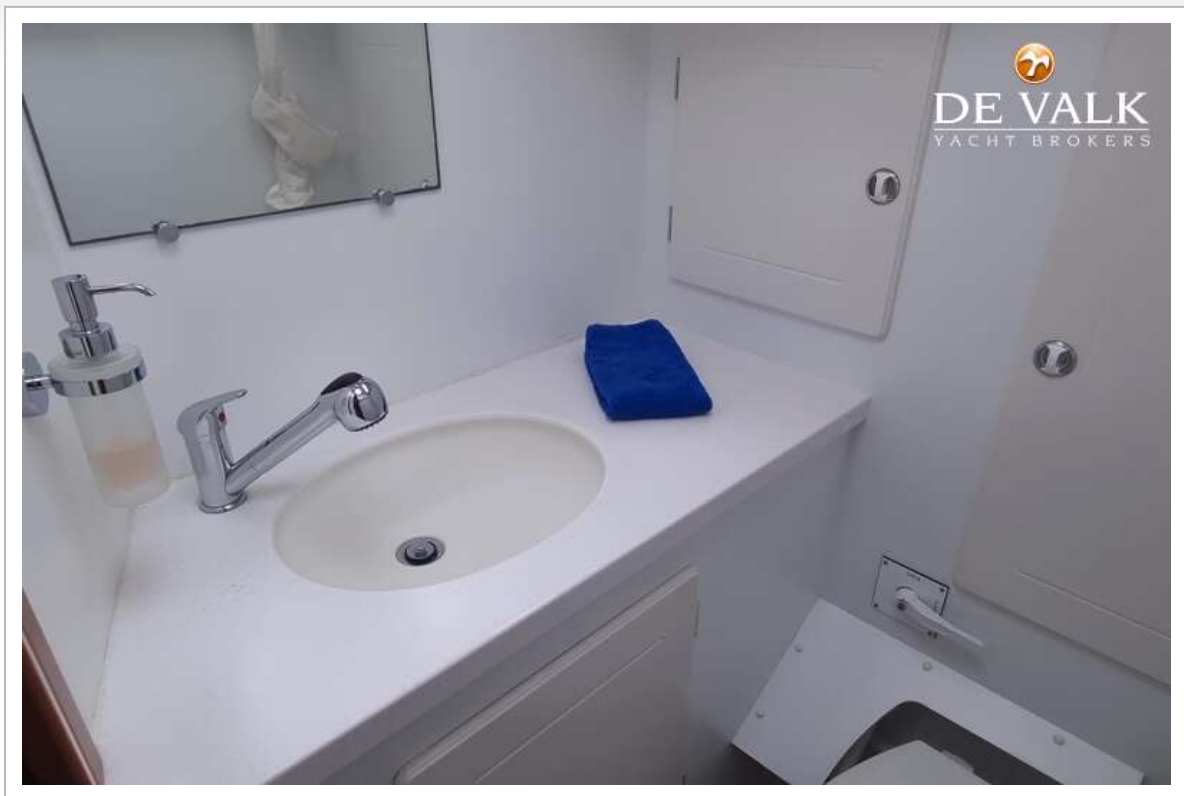
# HALLBERG RASSY 37



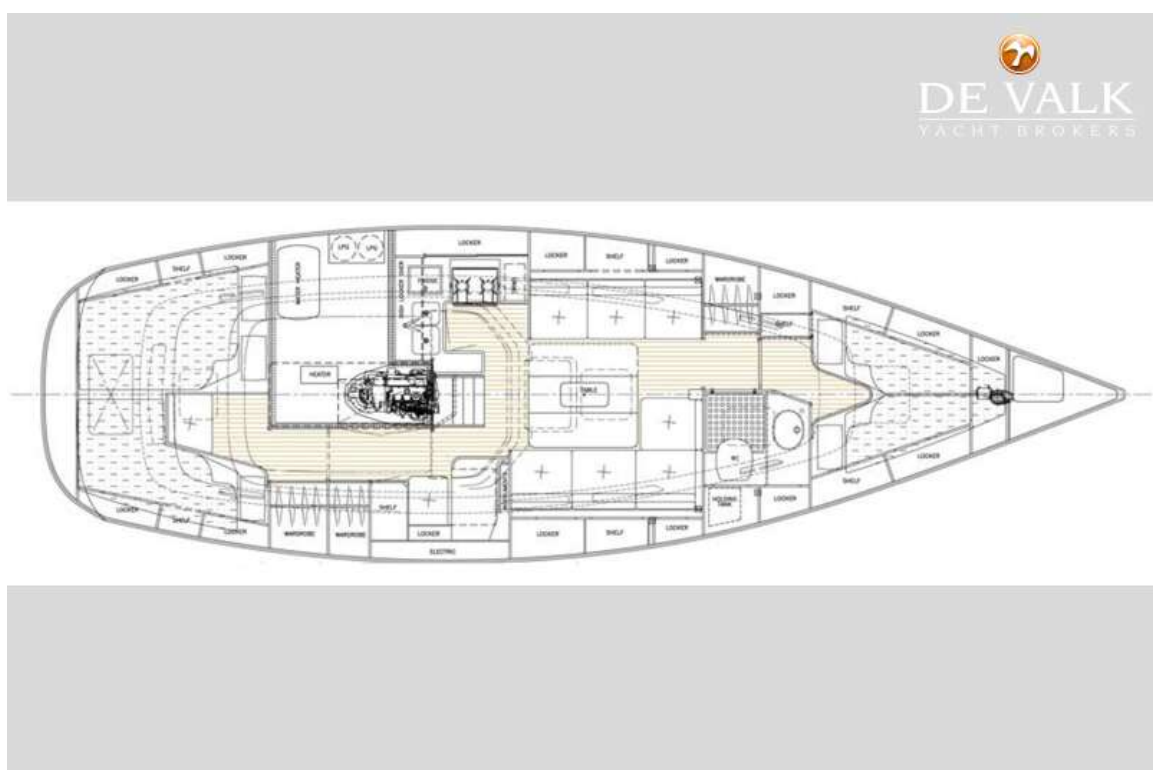


# HALLBERG RASSY 37





# HALLBERG RASSY 37





# HALLBERG RASSY 37

