



MOCHI 56

BROKER'S COMMENTS

When it comes to design, the Italian touch cannot be ignored and the Mochi 56 is a nice example of that particular quality. Though she might be considered vintage, this three deck motor yacht has a lot to offer in accommodation, style and live-aboard possibilities. She boasts a nice deck salon with ensuite galley, dinette and lounge area. Opening up the sliding cockpit doors and it is remarkable how much space is available. With 3 cabins and 1 crew cabin (or storage) with ensuite facilities she can entertain family and friends. The large flybridge offers tremendous views and lounge area.

Marc Weijenberg

SPECIFICATIONS

Dimensions	17.65 x 4.73 x 1.20 (m)	Builder	Cantieri Mochi Craft
Built	1996	Cabins	4
Material	GRP	Berths	7
Engine(s)	2 x MAN D2840 LXE diesel	Hp/Kw	2 x 820.00 (hp), 603.52 (kw)
Asking price	sold (VAT)	Lying	The Netherlands

CONTACT

Sales office	De Valk Thuishaven	Telephone	+31 35 5829042
Address	Peperstraat 7 1411 PX Naarden NL	E-mail	thuishaven@devalk.nl

DISCLAIMER

These particulars are given in good faith as supplied but cannot be guaranteed.



GENERAL

Model	MOCHI 56
Type	motor yacht
LOA (m)	17,65
Beam (m)	4,73
Draft (m)	1,20
Air draft (m)	5,80
Air draft min (m)	3,90
Headroom (m)	1,94
Year built	1996
Builder	Cantieri Mochi Craft
Country	Italy
Designer	Novulari & Lenard
Displacement (t)	30
Hull material	GRP
Hull colour	white
Hull shape	deep-V
Superstructure material	GRP
Rubbing strake	yes
Deck material	GRP
Deck finish	non-skid moulded in
Cockpit deck finish	teak
Window frame	stainless steel
Window material	tempered glass
Deckhatch	yes
Portholes	stainless steel
Flybridge	With access from the salon and one from the cockpit
Flybridge cockpit cover	yes
Radar arch	yes
Fuel tank (litre)	stainless steel 2 x 1500
Fuel daytank (litre)	stainless steel 500



Freshwater tank (litre)	stainless steel 1000
Blackwater tank (litre)	None
Inside helm position	hydraulic
Flybridge helm position	hydraulic
Extra info	Side opening door from inside helmposition to deck, cockpit lighting
Extra info	The full beam cockpit is a really good extension of the main salon with lots of extra seating and twin cockpit tables.

ACCOMMODATION

Cabins	4
Berths	7
Crew cabin	with toilet and washbasin
Interior	Modern white panels
Floor	PVC plus carpets
Open cockpit	yes
Pilot house	yes
Deck saloon	yes
Headroom saloon (m)	2,02 - 1,94 mtr
Heating	diesel ducted hot air Wallas 40DT
Dinette	yes
Sliding door to cockpit	stainless steel frames
Galley	yes
Countertop	granite
Sink	stainless steel 2 x
Cooker	electric Schott 4 burner (220v induction)
Extractor	yes
Microwave	(220v)
Fridge	1 x Waeco/Dometic
Hot water system	220V
Water pressure system	electrical
Owners cabin	double bed



Bed length (m)	1,98 x 1,50 mtr and headroom; 2,00 mtr
Wardrobe	hanging/drawers/shelves
Bathroom	en suite I
Toilet	en suite
Toilet system	vacuum
Wash basin	in the bathroom
Shower	en suite
Guest cabin 1	twin single
Bed length (m)	1,94 x 0,72 mtr and headroom 1,85 mtr
Wardrobe	drawers and shelves
Bathroom	en suite II
Toilet	en suite
Toilet system	vacuum
Wash basin	in the bathroom
Shower	en suite
Guest cabin 2	twin single
Bed length (m)	1,94 x 0,72 mtr and headroom 1,85 mtr
Wardrobe	drawers and shelves
Bathroom	en suite III
Toilet	en suite
Toilet system	vacuum
Wash basin	in the bathroom
Shower	en suite
Crew cabin(s)	can also be used as large storage room
Washing machine/dryer combi	LG (2024)
Extra info	Mar-lx vacuum toilet system

MACHINERY

No of engines	2
Make	MAN
Type	D2840 LXE



HP	820
kW	603.52
Fuel	diesel
Year installed	1996
Maximum speed (kn)	22
Cruising speed (kn)	7
Engine hours	1280
Engine cooling system	freshwater heat exchanger
Drive	shaft
Engine controls	pneumatic
Gearbox	hydraulic ZF
Bowthruster	electric Vetus
Exhaust	watercooled
Propeller type	fixed 2 x (2019)
Propeller blades	4
Propeller shaft material	stainless steel
Shaft lubrication	water
Electric bilge pump	yes
Electrical installation	24v/220v
Generator	wet exhaust Onan 12kW (serviced 2024)
Running hours generator	1040
Start battery	2 x
Service battery	4 x
Generator battery	1 x
Bowthruster battery	2 x
Battery charger	Mastervolt 24v/100amp plus chargers for gen-set and bowthruster
Inverter	Mastervolt 24v/2500watt
Shorepower	with cable

NAVIGATION



Compass	yes
Compass on flybridge	yes
Depth sounder	Raymarine (2019)
VHF	Icom ICM603 + Icom Euro
Rudder angle indicator	yes
GPS	yes
Plotter	Raymarine Hybrid Touch (2019)
AIS receiver	Raymarine (2019)
Camera	stern view (2019)
Navigation lights	yes
Searchlight	yes

EQUIPMENT

Cockpit cover	yes
Bimini	yes
Window cover	yes
Cockpit cushions	(2020)
Cockpit table	2 x
Cockpit chairs	yes
Bathing platform	yes
Boarding ladder	yes
Gangway	Besenzoni (hydraulic)
Deck shower	yes
Anchor	Delta
Anchor chain	Approx. 50 mtr
Windlass	electrical Lofrans (24v)
Capstan	Lofrans (24v)
Windlass aft	electrical 2 x mooring-capstans
Sea railing	stainless steel
Grab rail (superstructure)	stainless steel
Railing side opening gates	yes



Pushpit	yes
Pulpit	yes
Wiper	2 x
Horn	yes
Fenders	yes
Mooring lines	yes
TV	yes
Radio	Fusion system
Cockpit speakers	yes
Speakers in salon	yes
Extra info	sunbed cushions

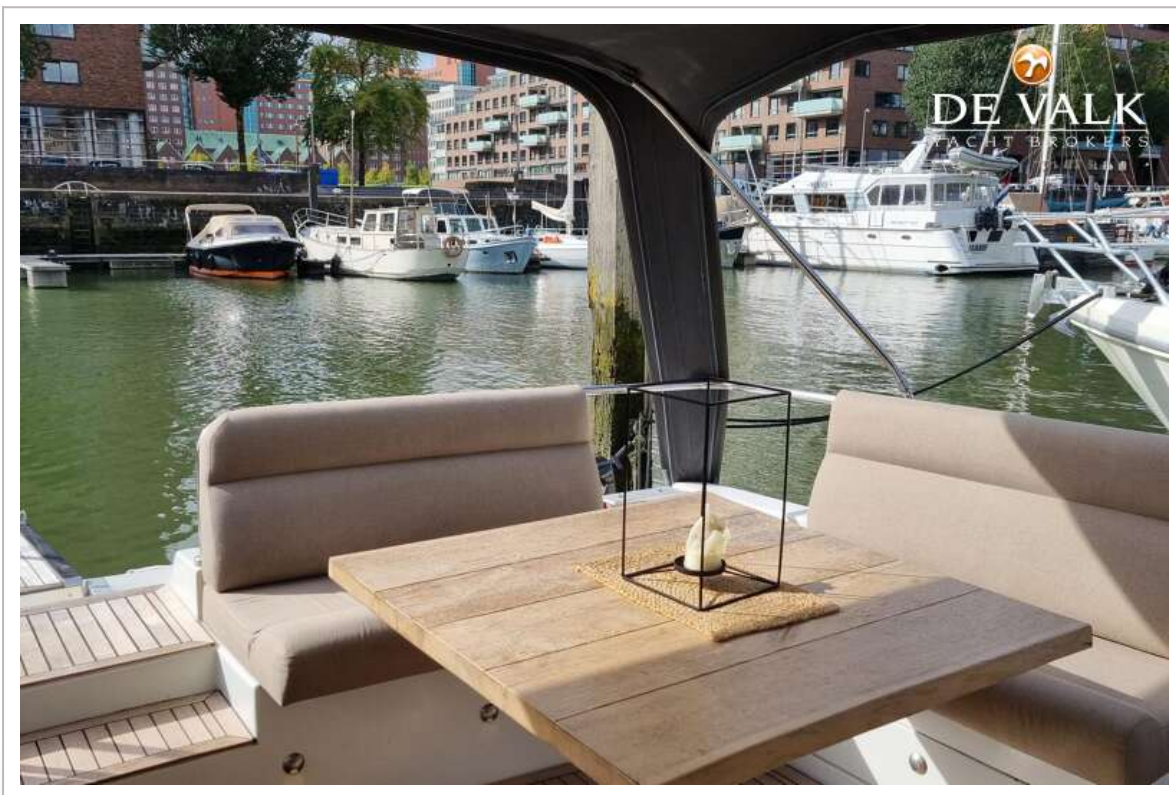


MOCHI 56

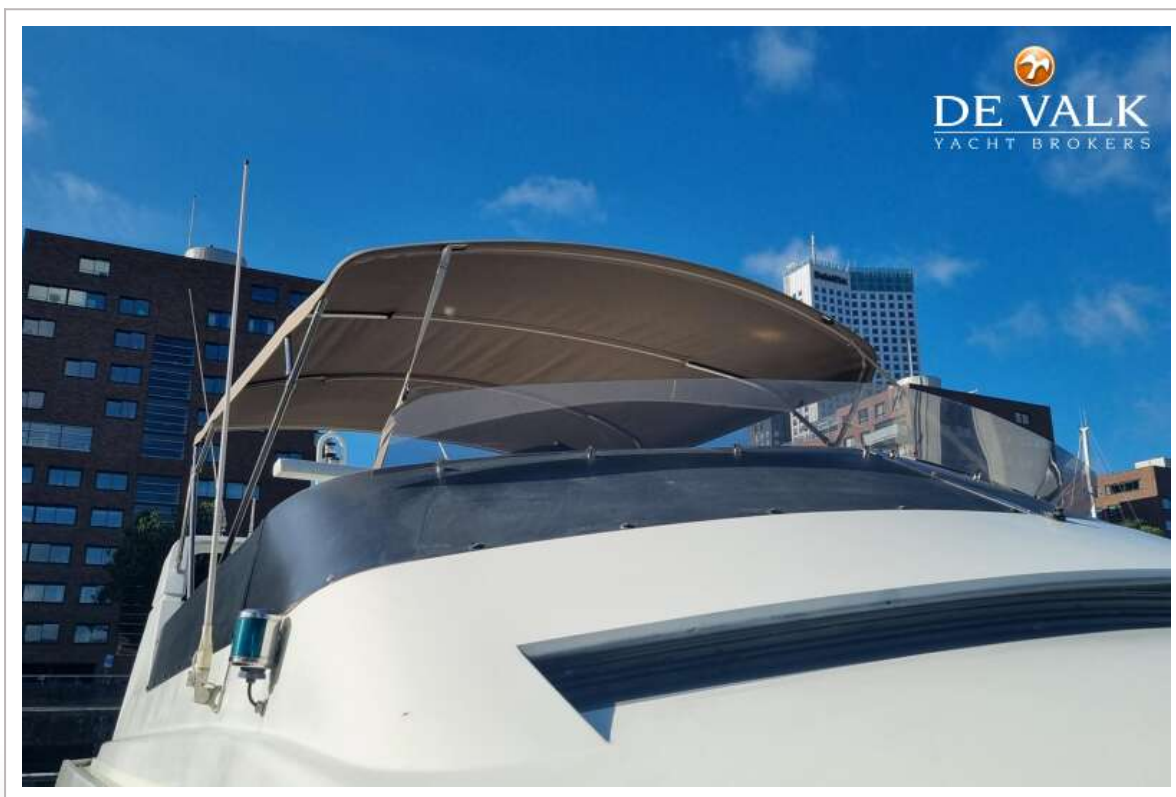


MOCHI 56





MOCHI 56



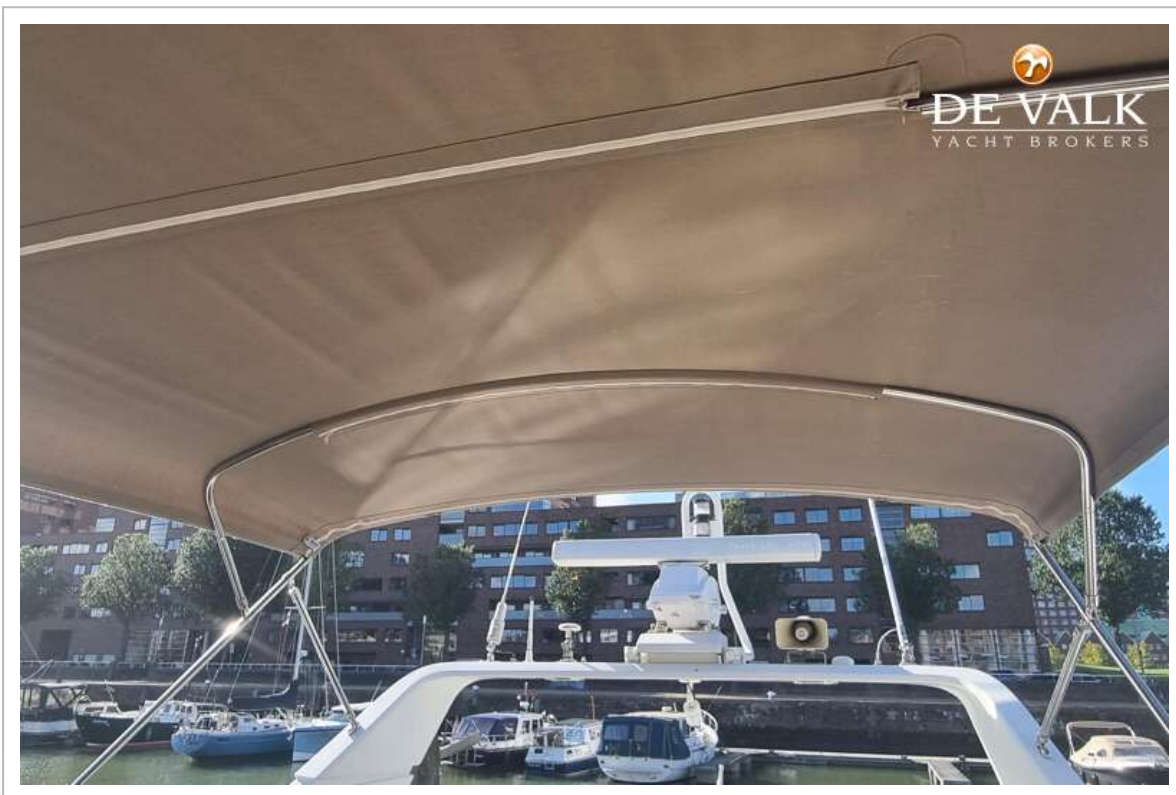
MOCHI 56

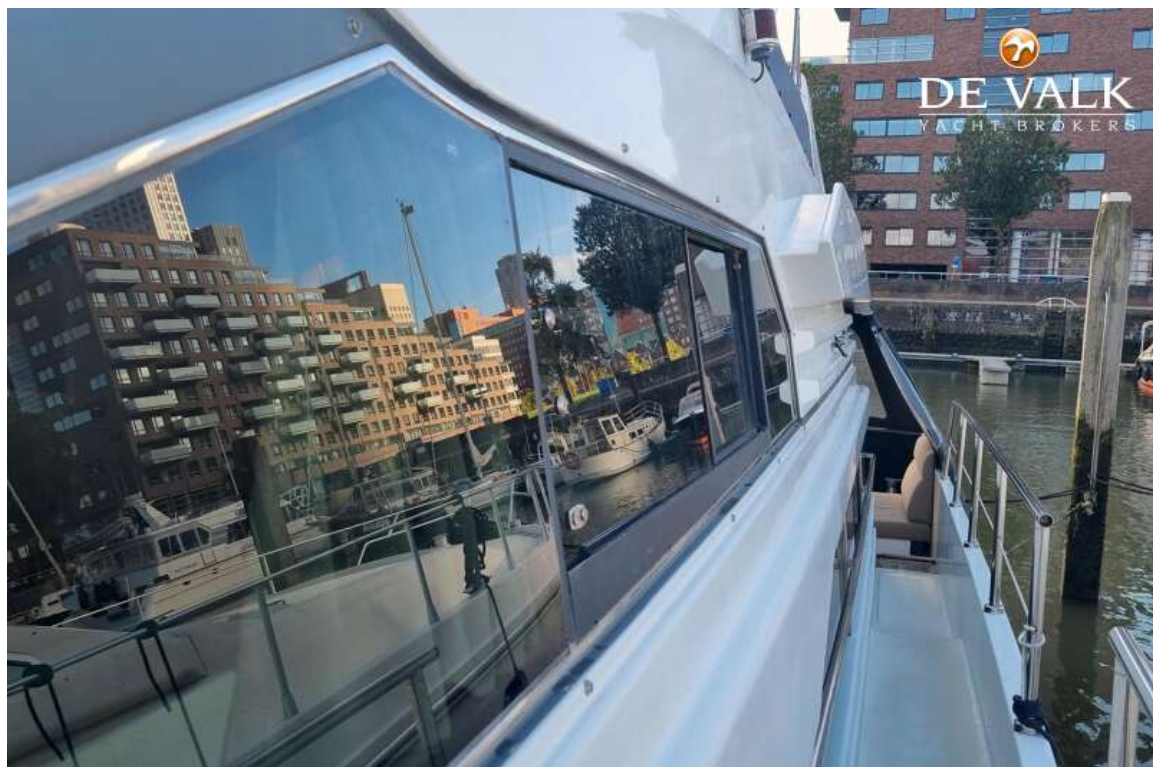


MOCHI 56



MOCHI 56

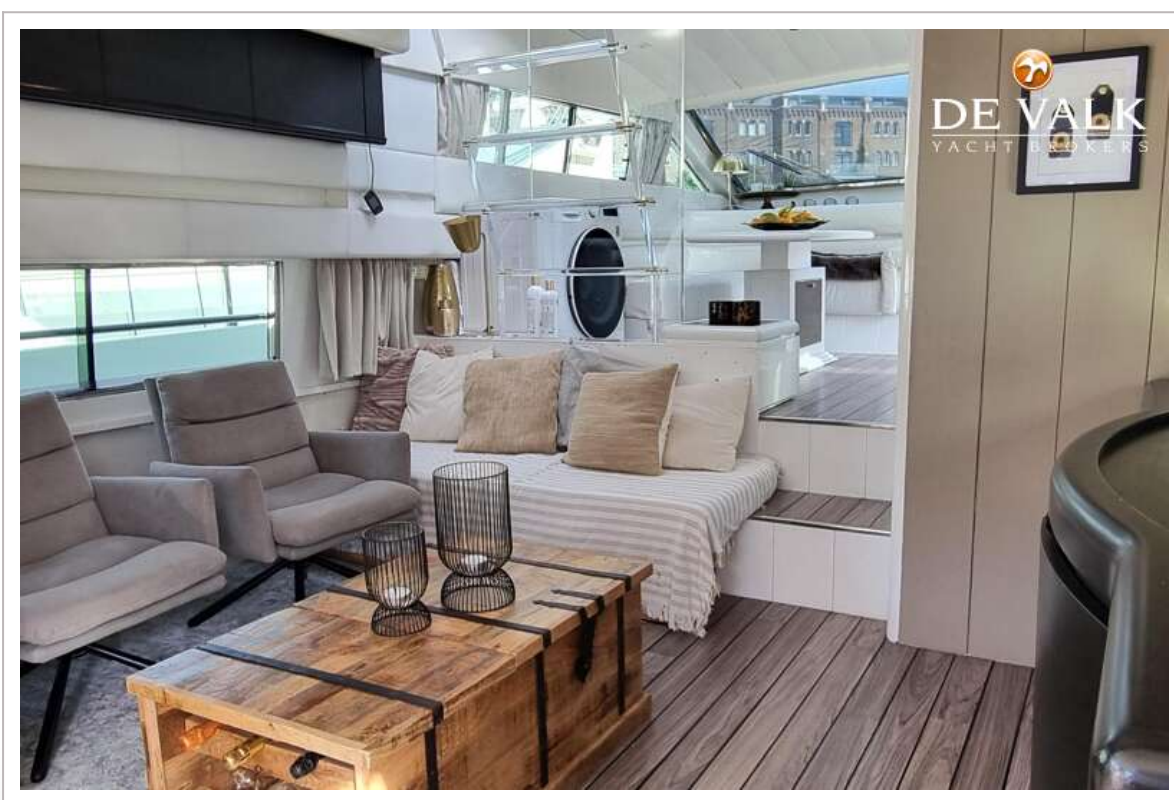




MOCHI 56



MOCHI 56



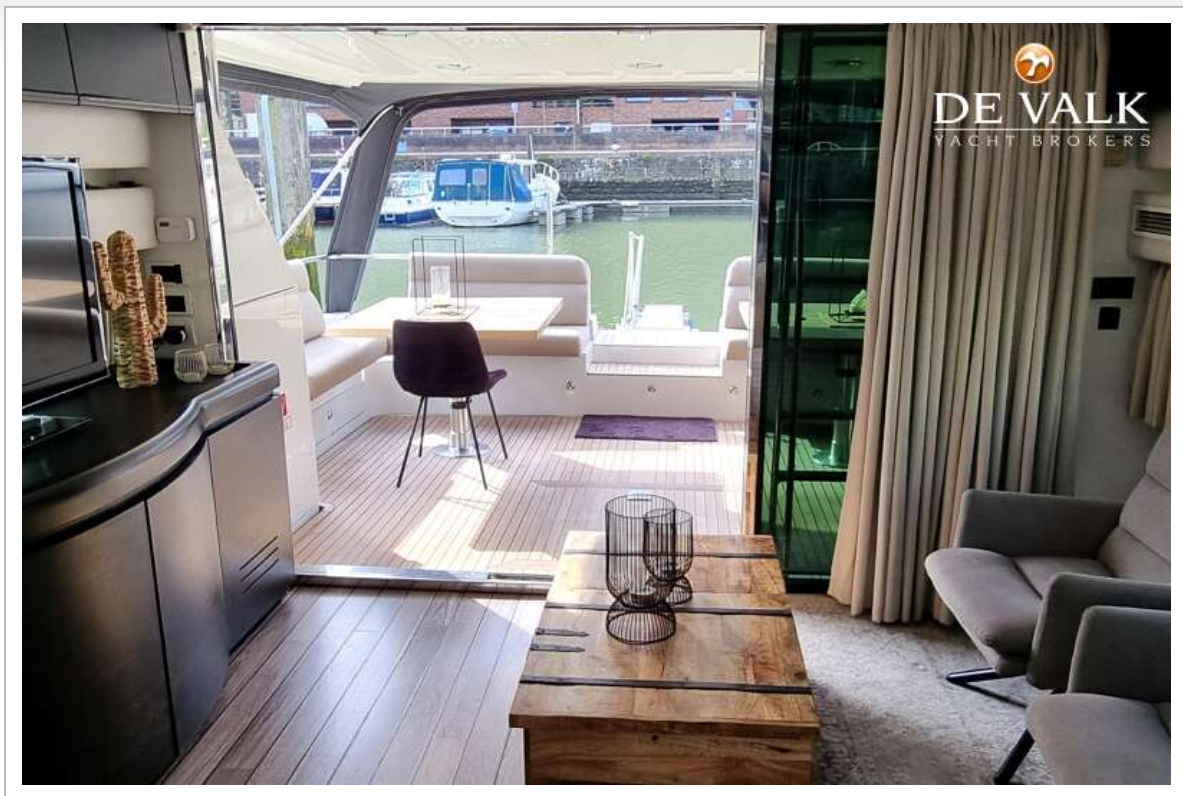


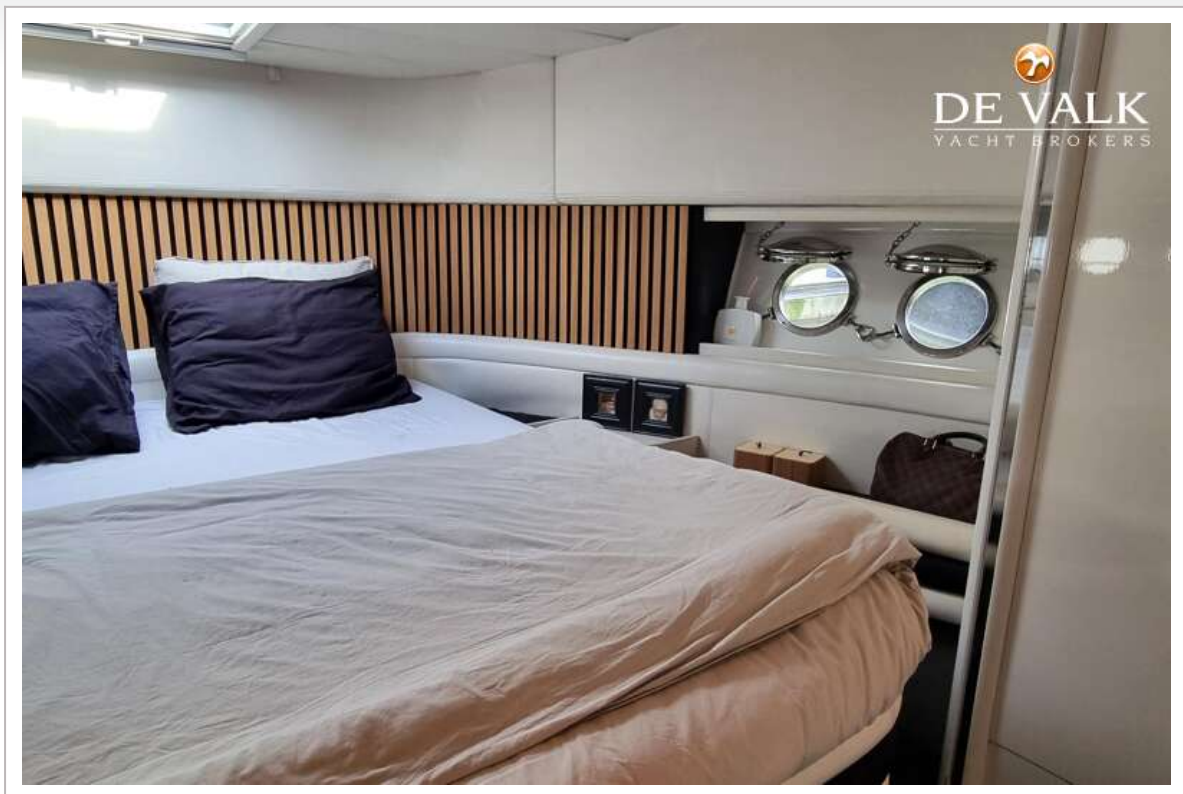


MOCHI 56

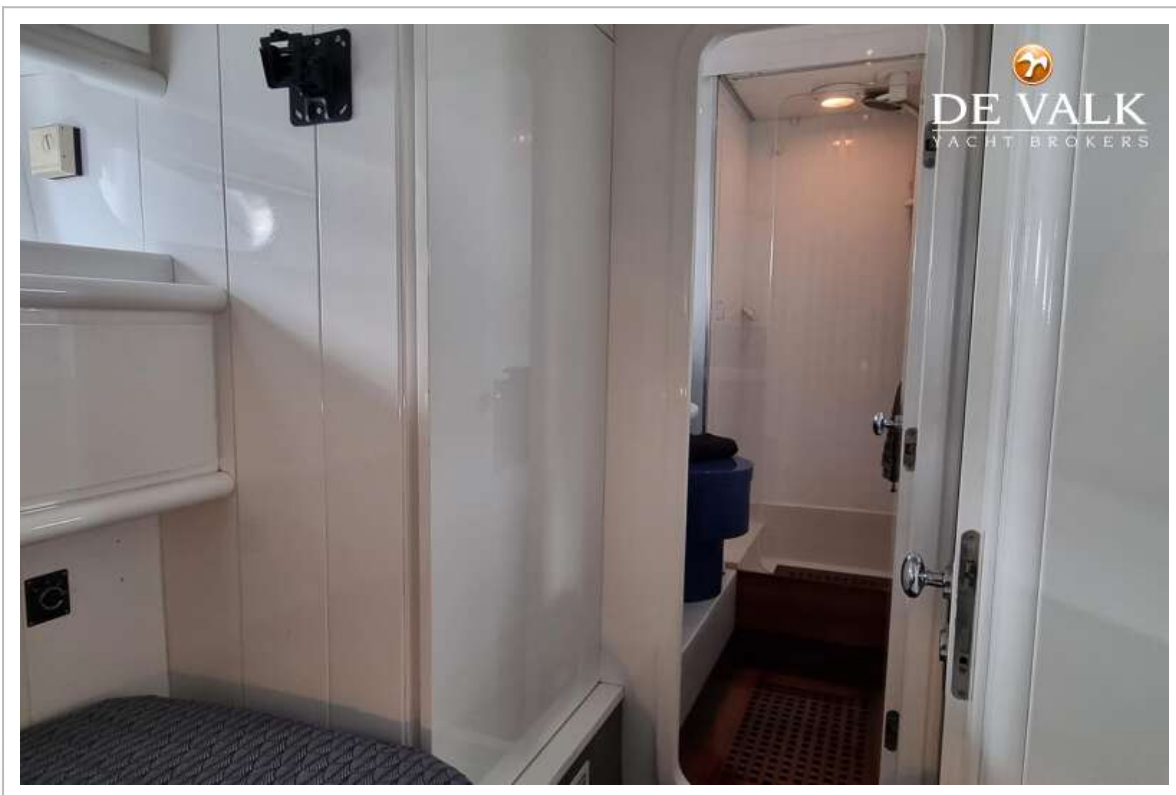


MOCHI 56











MOCHI 56

