



DE VALK  
YACHT BROKERS

## RIVA 86 DOMINO



DE VALK  
YACHT BROKERS

## BROKER'S COMMENTS

This Riva Domino 86 embodies everything you'd expect from a Riva: sleek, timeless lines, unmatched performance, and impeccable attention to detail. Captain-maintained from day one and lovingly cared for by its current owner, this yacht is a true reflection of Riva's legacy of excellence. What sets this particular Domino apart is its one of a kind, custom-built flybridge seating area, a unique feature that enhances both the aesthetic and functionality of the yacht. One of the finest Riva Dominos on the market today.

*Tom Kingham*

## SPECIFICATIONS

<b>Dimensions</b>	26.40 x 6.20 x 1.82 (m)	<b>Builder</b>	Riva SpA
<b>Built</b>	2010	<b>Cabins</b>	4
<b>Material</b>	GRP	<b>Berths</b>	8
<b>Engine(s)</b>	2 x MTU 16V2000 M93 diesel	<b>Hp/Kw</b>	2 x 2,435.00 (hp), 1,792.16 (kw)
<b>Asking price</b>	Under Offer (VAT Paid)	<b>Lying</b>	at sales office

## CONTACT

<b>Sales office</b>	De Valk Palma	<b>Telephone</b>	+34 971 402 911
<b>Address</b>	Port. Cala Nova, Avda. Joan Miro, 327 07015 Palma de Mallorca Spain	<b>E-mail</b>	palma@devalk.nl

## DISCLAIMER

These particulars are given in good faith as supplied but cannot be guaranteed.



## GENERAL

Model	RIVA 86 DOMINO
Type	motor yacht
LOA (m)	26,40
LWL (m)	20,60
Beam (m)	6,20
Draft (m)	1,82
Year built	2010
Launched	2010
Builder	Riva SpA
Country	Italy
Designer	Oficina Italiana Design
Displacement (t)	75
Net tonnage	85.09
CE norm	A
Hull material	GRP
Hull colour	Grey
Hull shape	V-shaped hull
Superstructure material	GRP
Rubbing strake	Stainless steel
Deck material	GRP
Deck finish	teak
Superstructure deck finish	teak
Cockpit deck finish	teak
Antifouling (year)	2022 black
Window frame	Directly bonded glass
Window material	tempered glass Viraver
Deckhatch	yes
Portholes	stainless steel
Flybridge	Sportbridge style
Flybridge cover	Individual covers for helm console, helm seats and aft seating



<b>Flybridge suncover</b>	Sailcloth with 4 vertical posts
<b>Fuel tank (litre)</b>	GRP 7,500
<b>Level indicator (fuel tank)</b>	yes
<b>Freshwater tank (litre)</b>	polyethylene 3 x 330
<b>Level indicator (freshwater)</b>	yes
<b>Blackwater tank (litre)</b>	polyethylene 330
<b>Level indicator (blackwater)</b>	yes
<b>Blackwater tank extraction</b>	deck extraction + pump
<b>Greywater tank (litre)</b>	polyethylene 330
<b>Level indicator (greywater)</b>	yes
<b>Wheel steering</b>	hydraulic
<b>Inside helm position</b>	yes
<b>Flybridge helm position</b>	hydraulic
<b>More info on paintwork</b>	Yacht repainted in 2022
<b>Extra info</b>	Foldaway sun awning on foredeck

## ACCOMMODATION

<b>Cabins</b>	4
<b>Berths</b>	8
<b>Crew cabin</b>	Inc. washer and dryer
<b>Crew berths</b>	4 berths
<b>Interior</b>	Satin Oak and Wenge with leather facing on cabinets
<b>Floor</b>	Mostly carpeted throughout
<b>Open cockpit</b>	yes
<b>Headroom saloon (m)</b>	1,90 - 2,10m
<b>Heating</b>	Reverse cycle air conditioning
<b>Air-conditioning</b>	reverse cycle airco Condaria 90,000 BTU chilled water
<b>Navigation center</b>	yes
<b>Dinette</b>	Extending leather topped stainless steel dining table - 8 seats
<b>Sliding door to cockpit</b>	Stainless steel with hinged outward opening powered window
<b>Opening door to cockpit</b>	Nemo electric pantograph doors to port and starboard of helm



Galley	Galley down to port of the helm station
Countertop	corian White
Sink	corian White
Cooker	electric 2 x 2 burner Miele induction hobs
Extractor	Bosch
Microwave/oven combi	Miele combi oven - convection / microwave
Fridge	Haier double fridge over freezer
Freezer	Haier double
Hot water system	220V + engine
Water pressure system	electrical
Dishwasher	Bosch full size
Ice maker	In cockpit
Coffee maker	DeLonghi Prima Donna in galley
Crockery	yes
Owners cabin	double bed
Bed length (m)	2,00
Wardrobe	hanging/drawers/shelves Walk-in wardrobe, drawers under bed
Bathroom	en suite
Toilet	en suite With matching bidet
Toilet system	electric Tecma
Wash basin	in the bathroom His and hers, moulded Corian
Shower	en suite
Extra info	Partially leather panelled bulkheads, dressing table
Guest cabin 1	double bed VIP cabin
Bed length (m)	1,90
Wardrobe	hanging and drawers Drawers under bed
Bathroom	yes
Toilet	en suite With matching bidet
Toilet system	electric Tecma
Wash basin	in the bathroom Moulded Corian
Shower	en suite
Extra info	30 inch TV with satellite box



<b>Guest cabin 2</b>	double bed
<b>Bed length (m)</b>	1.90m
<b>Wardrobe</b>	hanging and drawers Drawers under bed
<b>Bathroom</b>	en suite
<b>Toilet</b>	en suite
<b>Toilet system</b>	electric Tecma with matching bidet
<b>Wash basin</b>	in the bathroom Moulded Corian
<b>Shower</b>	en suite
<b>Guest cabin 3</b>	twin single
<b>Bed length (m)</b>	1.90
<b>Wardrobe</b>	hanging and drawers
<b>Bathroom</b>	Day head
<b>Toilet</b>	en suite
<b>Toilet system</b>	electric Tecma
<b>Wash basin</b>	in the bathroom Moulded Corian
<b>Shower</b>	yes
<b>Crew cabin(s)</b>	4 bunks
<b>Toilet (crew)</b>	Tecma
<b>Toilet system</b>	electric
<b>Wash basin</b>	in the bathroom
<b>Shower (crew)</b>	yes
<b>Washing machine</b>	Miele Classic - full size
<b>Dryer</b>	Miele Classic - full size
<b>Ironing facilities</b>	yes
<b>Wet bar</b>	Sink with fresh water and electric griddle to cockpit port side
<b>Tender garage</b>	With Williams 385 and Kawasaki PWC
<b>Extra info</b>	Stainless steel launching and recovery ramps for tenders

## MACHINERY

<b>No of engines</b>	2
<b>Make</b>	MTU



Type	16V2000 M93
HP	2435
kW	1792.16
Fuel	diesel
Year of overhaul	2024 plus turbo service
Maximum speed (kn)	38
Cruising speed (kn)	26
Engine hours	2000
Engine cooling system	freshwater heat exchanger
Drive	V-drive
Engine controls	electrical
Gearbox	hydraulic
Bowthruster	hydraulic TRAC
Sternthruster	hydraulic TRAC
Exhaust	watercooled
Propeller type	fixed
Propeller blades	5 blade
Propeller shaft material	stainless steel
Shaft lubrication	water
Electric bilge pump	Multiple
Bilge alarm	yes
Electrical installation	24V / 220V
Generator	wet exhaust Kohler 20 kVA
Running hours generator	3,400
Generator 2	Kohler 17.5 kVA
Running hours generator 2	1,165 since new hour counter
Batteries	16 x Exide Strongpro
Generator battery	yes
Battery monitor	yes
Battery charger	2 x Mastervolt Mass 24/75
Inverter	Mastervolt Mass Sine 24/2500
Battery charger/inverter	Mastervolt Dakar Combi 23/3000



<b>Shorepower</b>	125 amp and 63 amp
<b>Insulation transformer</b>	Custom made
<b>Watermaker</b>	Idromar 180 - 200 l/h
<b>Stabilizers</b>	0-speed Seakeeper 26
<b>Trimtabs</b>	Hydraulic
<b>Extra info</b>	9 Bluefin underwater LED lights

## NAVIGATION

<b>Compass</b>	Ritchie magnetic
<b>Compass on flybridge</b>	Ritchie magnetic
<b>Electric compass</b>	yes
<b>Multi control display</b>	2 x ISIC 40cm MFDs
<b>Depth sounder</b>	Simrad
<b>Log</b>	Simrad
<b>Windset</b>	yes
<b>Repeater</b>	yes
<b>VHF</b>	Simrad RS82
<b>VHF handheld</b>	4 Icoms
<b>Autopilot</b>	Simrad AP70
<b>Rudder angle indicator</b>	yes
<b>Radar</b>	Furuno open array
<b>GPS</b>	yes
<b>Plotter</b>	yes
<b>Radar/plotter</b>	yes
<b>Navtex</b>	yes
<b>Wifi antenna</b>	5G
<b>AIS transceiver</b>	yes
<b>EPIRB</b>	Simrad on flybridge
<b>Camera</b>	Strix Marine infra red camera
<b>Navigation lights</b>	yes
<b>Searchlight</b>	yes





Loudhailer	yes
Extra info	YachtController

## EQUIPMENT

Fixed windscreen	Viraver laminated
Bimini	On foredeck and flybridge
Sun awning	Cockpit
Window cover	yes
Cockpit cushions	yes
Cockpit table	Oak with stowage for 4 folding chairs
Cockpit chairs	3 x Kettal plastic and fabric
Bathing platform	Teak laid with removable launch ramps for tenders
Boarding ladder	Hydraulic plus emergency manual ladder
Transom door	2 x steel and perspex transom gates
Gangway	Besenzoni 3 stage
Deck shower	yes
Anchor	Bruce 75 Kg stainless steel
Anchor chain	80m galvanised and marked
Anchor 2	Bruce 50 Kg stainless steel
Anchor chain	80m galvanised and marked
Chain counter	yes
Other ground tackle	Chain wash
Windlass	electrical 2 x Lofrans Project X4 with capstans, foot switches and remote
Capstan	yes
Windlass aft	electrical Two Lofrans with foot switches and lift up bulwark sections
Deck wash	yes
Dinghy	rigid inflatable Williams 385 Turbojet (2015) and Kawasaki Jetski (2020)
Grab rail (superstructure)	stainless steel
Pulpit	yes



Life raft	container
Life raft (pers)	container 2 x 10 person
Last life raft survey	1 in date, 1 needs survey
Lifebuoy	On flybridge
Wiper	2 x Speich
Horn	electric
Fenders	yes
Mooring lines	yes
Spare parts	yes
Alarm system	yes
TV	65" in saloon
Satellite	Sky dish with multiple boxes
Radio-cd player	yes
Surround Sound System	Bose
Cockpit speakers	2 x Bose
Speakers in salon	Bose
Speakers in cabin	Bose
Clock - barometer	yes
Fire extinguisher	Multiple
Extinguisher in engine room	yes
Auto extinguisher system	Firebuoy with control panel at helm
Extra info	Engine and thruster controls in cockpit



# RIVA 86 DOMINO



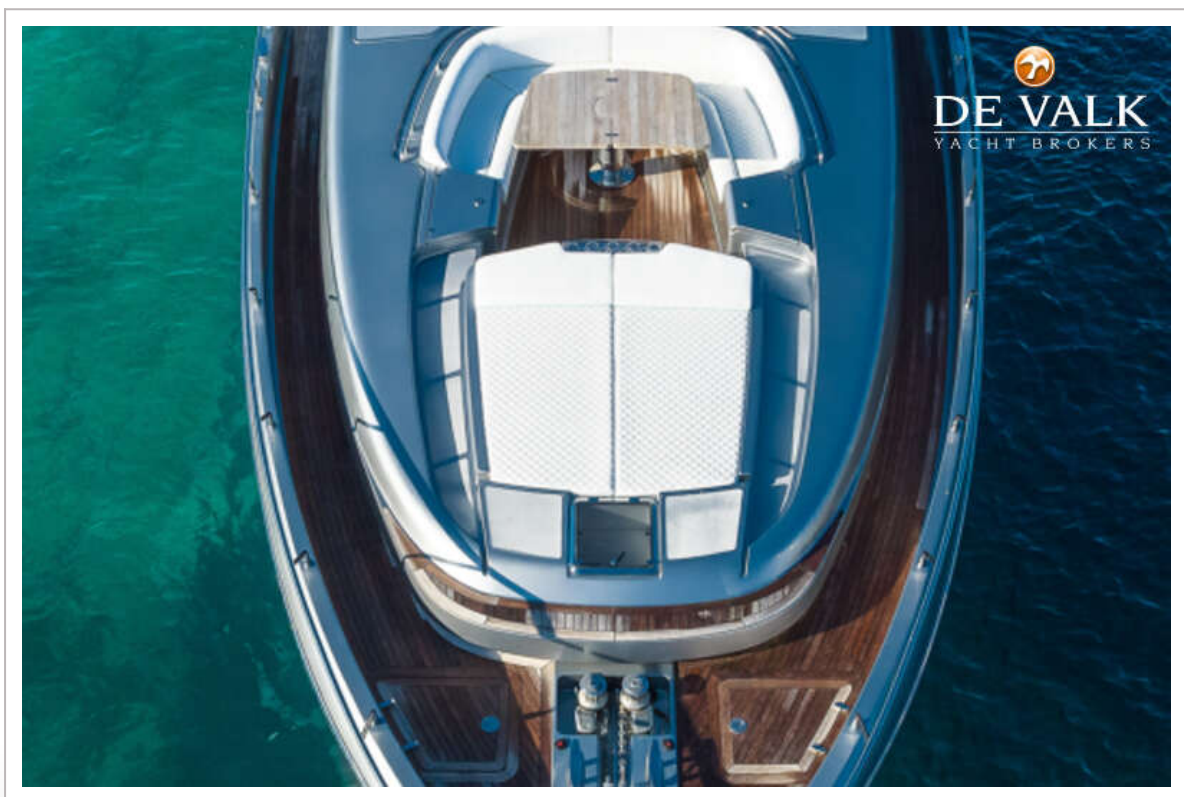
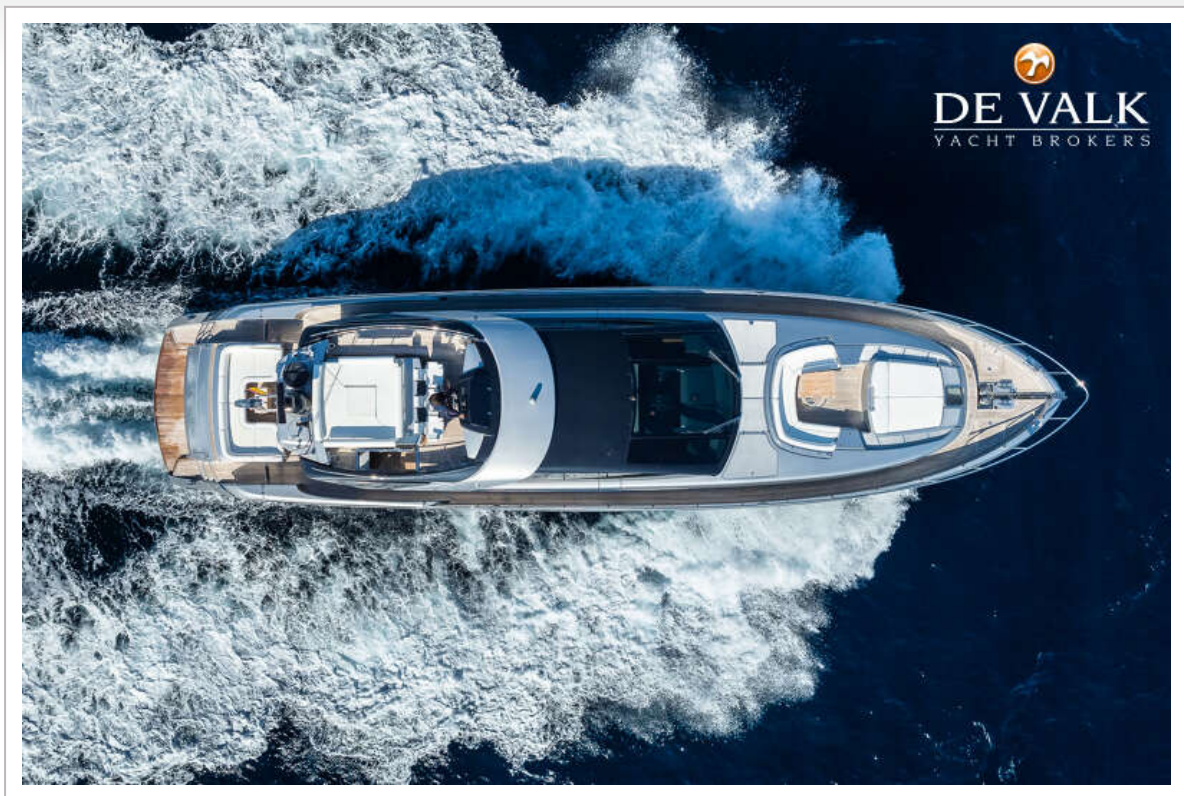


# RIVA 86 DOMINO





# RIVA 86 DOMINO

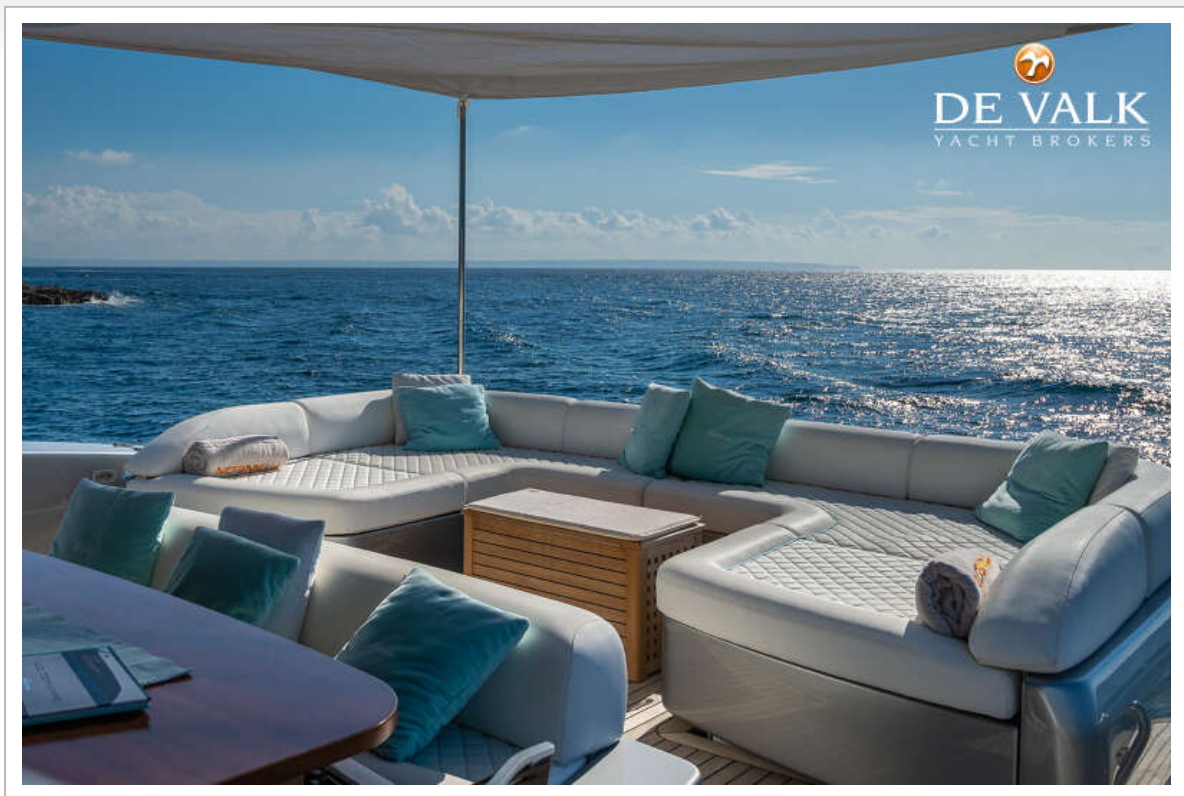




# RIVA 86 DOMINO

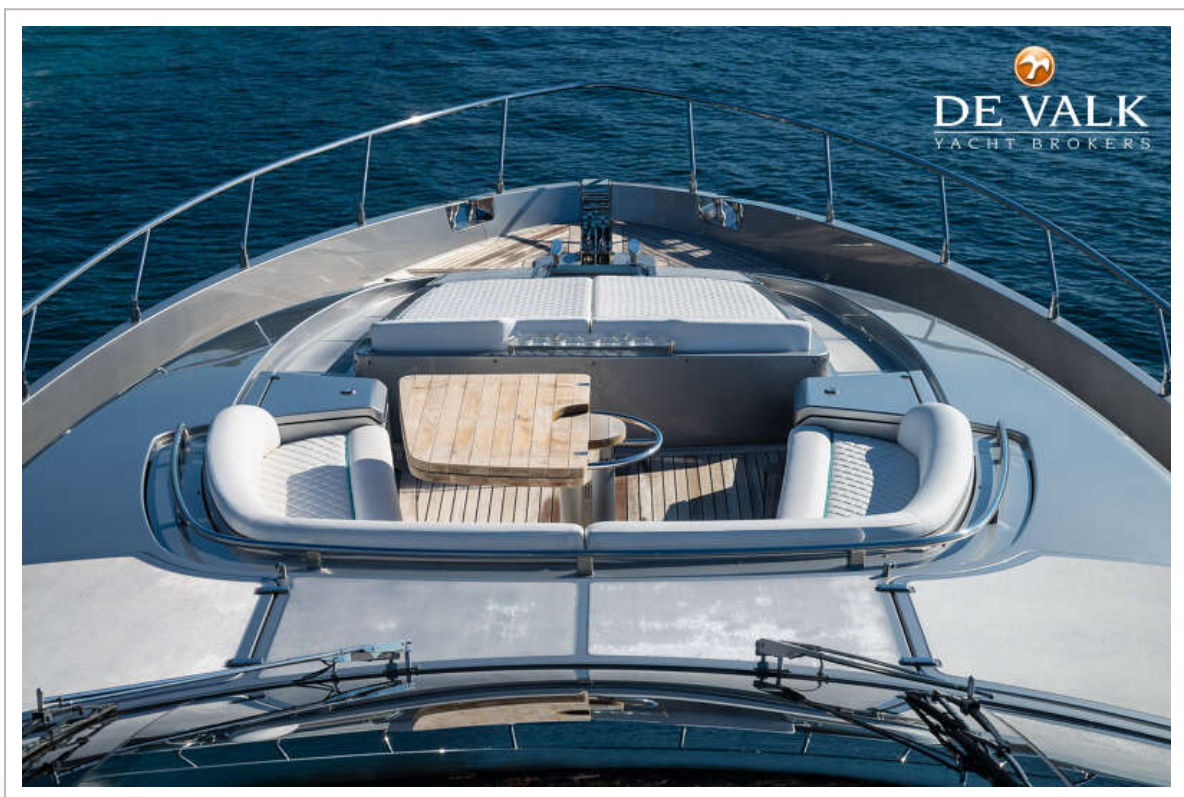


# RIVA 86 DOMINO





# RIVA 86 DOMINO





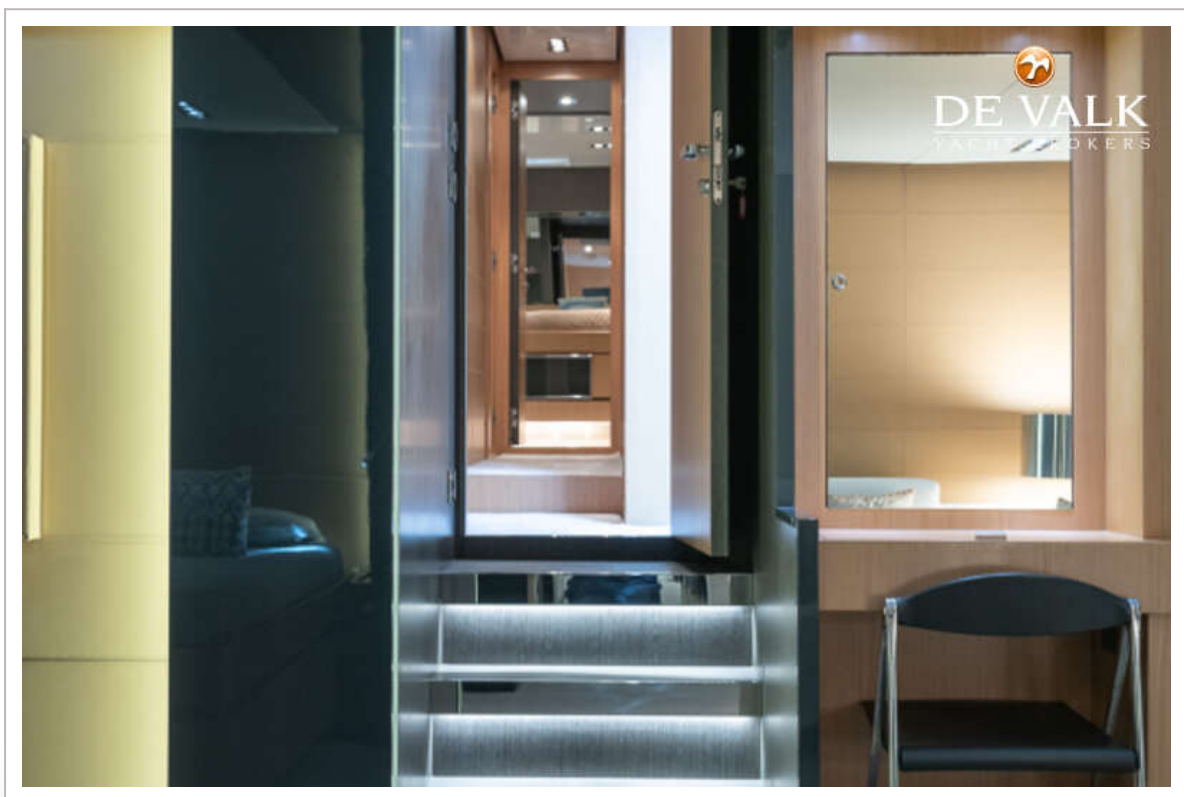
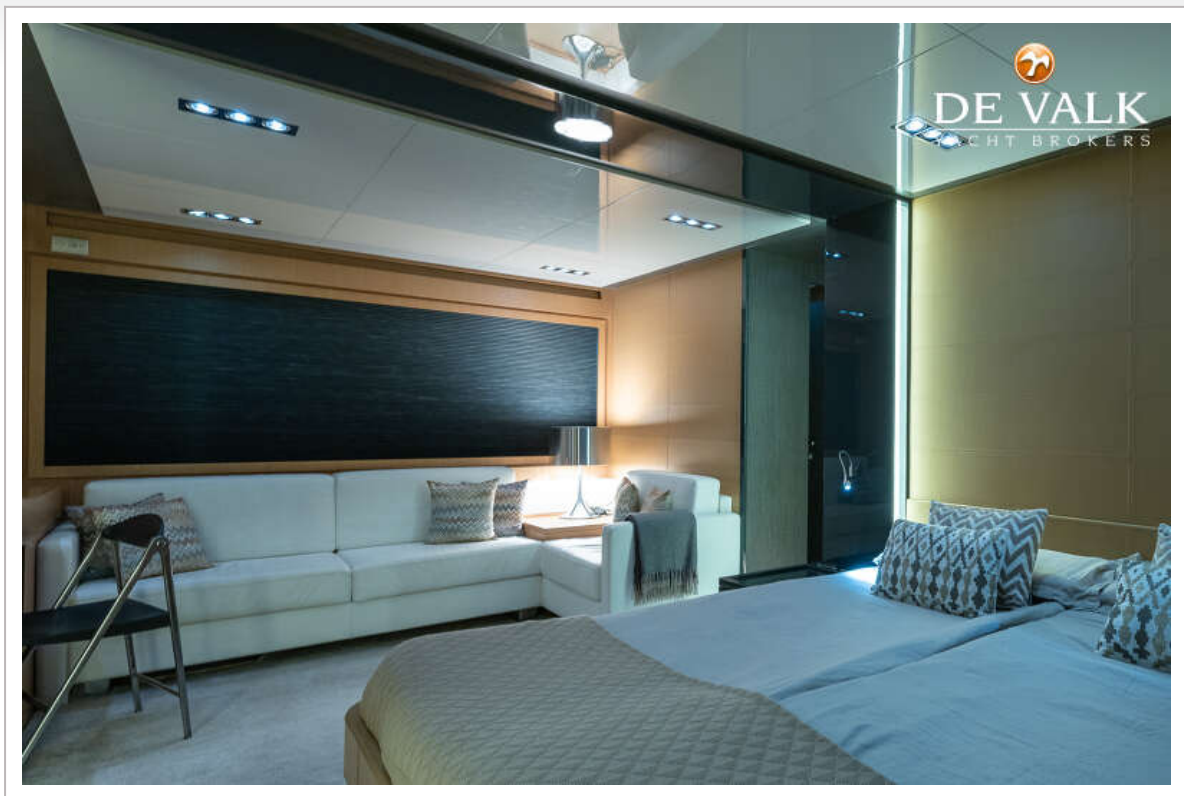
# RIVA 86 DOMINO



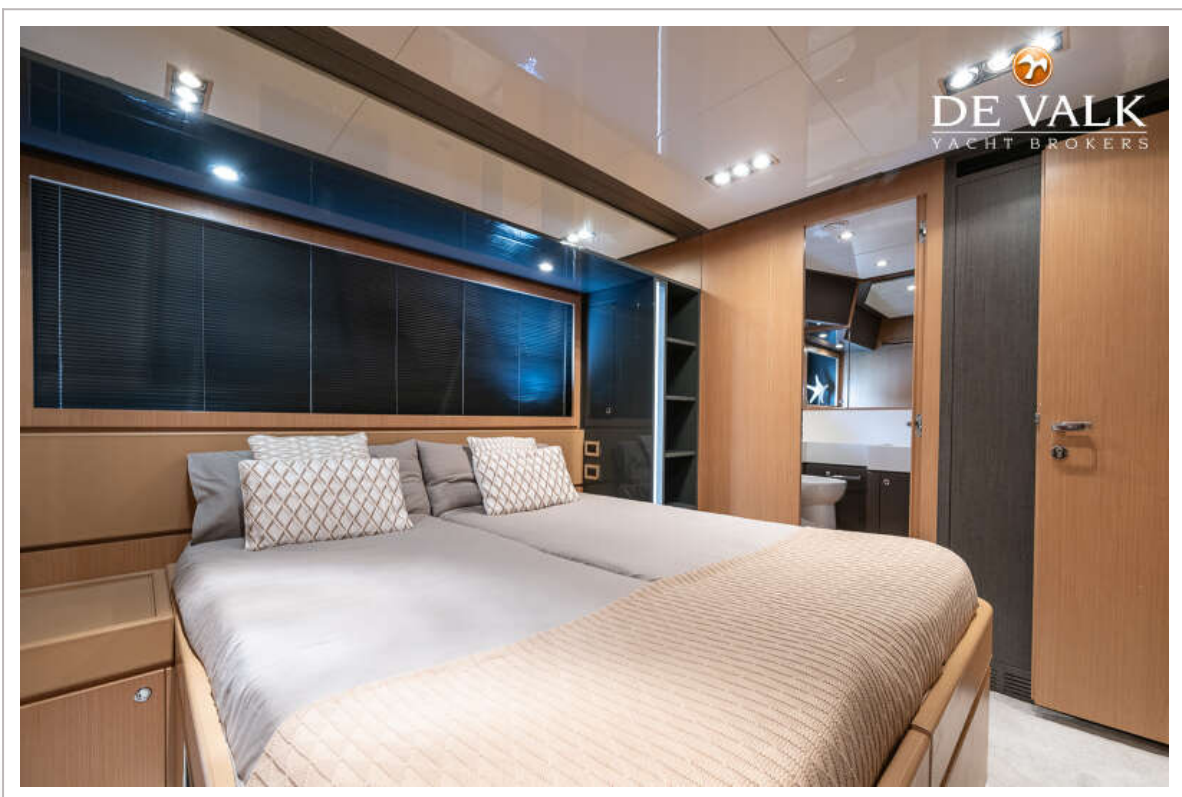
# RIVA 86 DOMINO



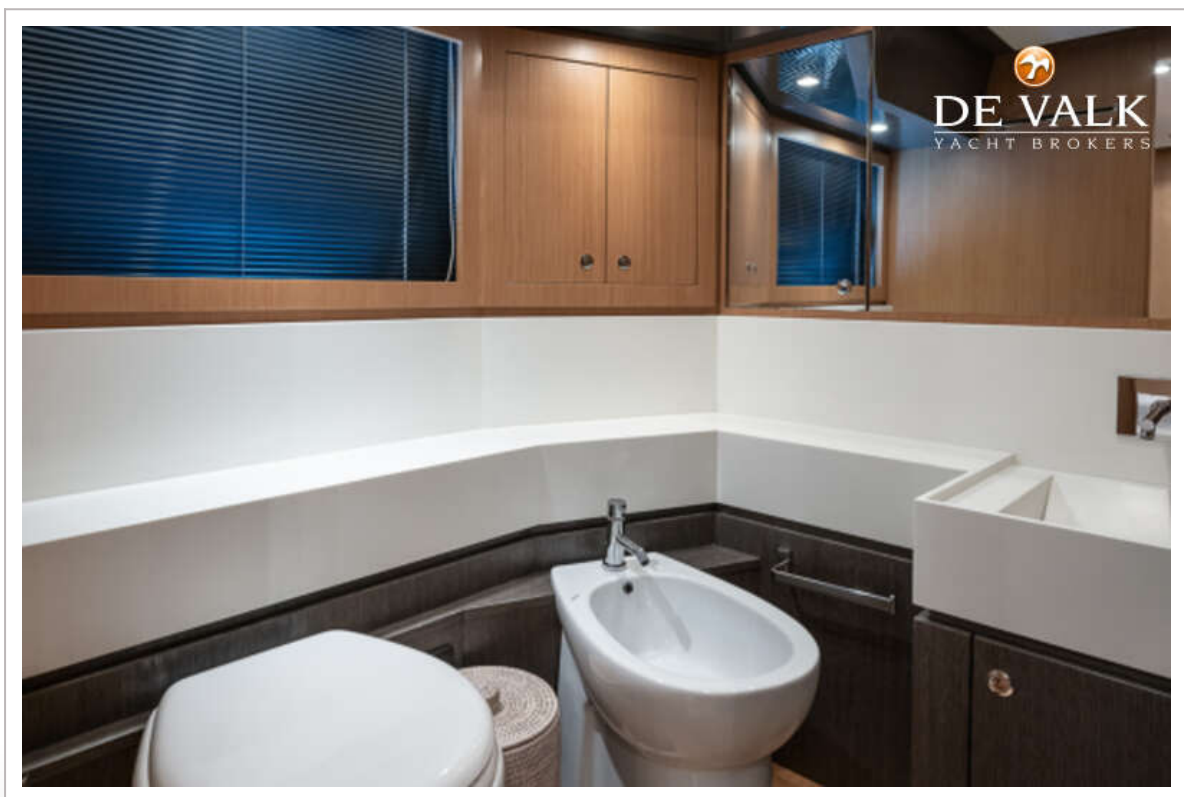
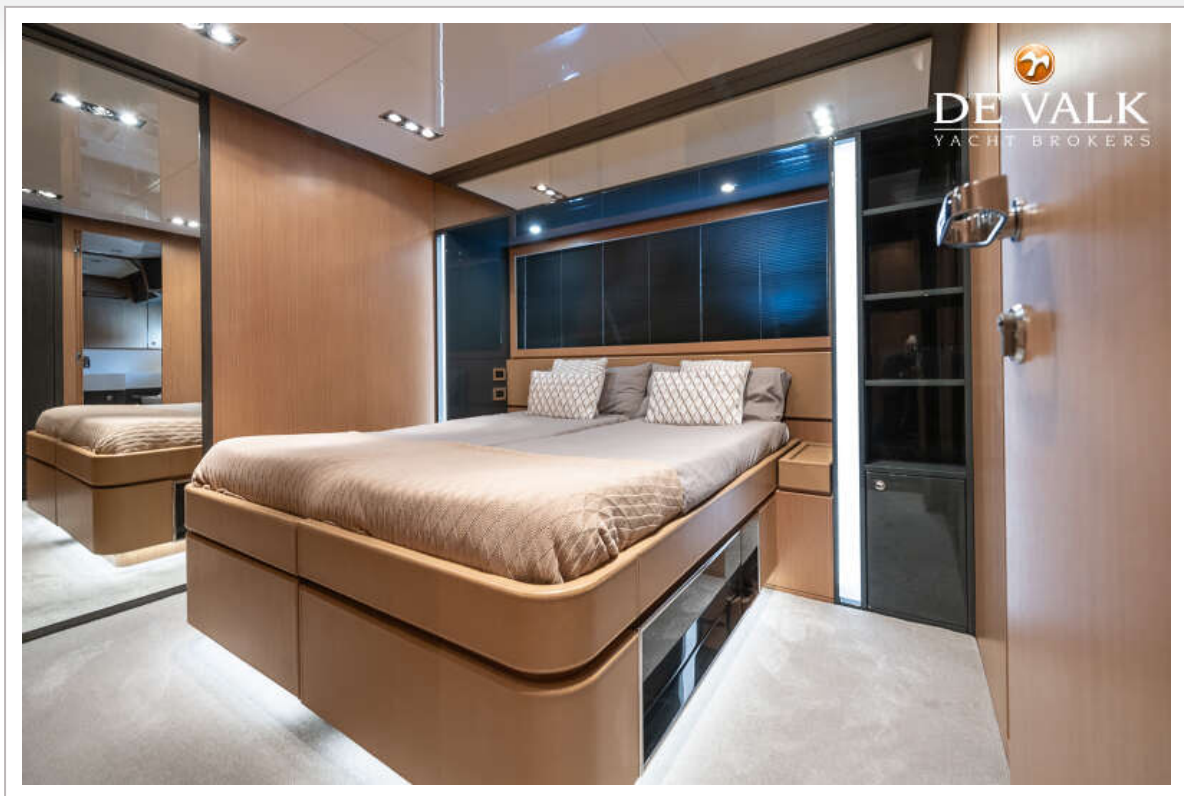




# RIVA 86 DOMINO



# RIVA 86 DOMINO

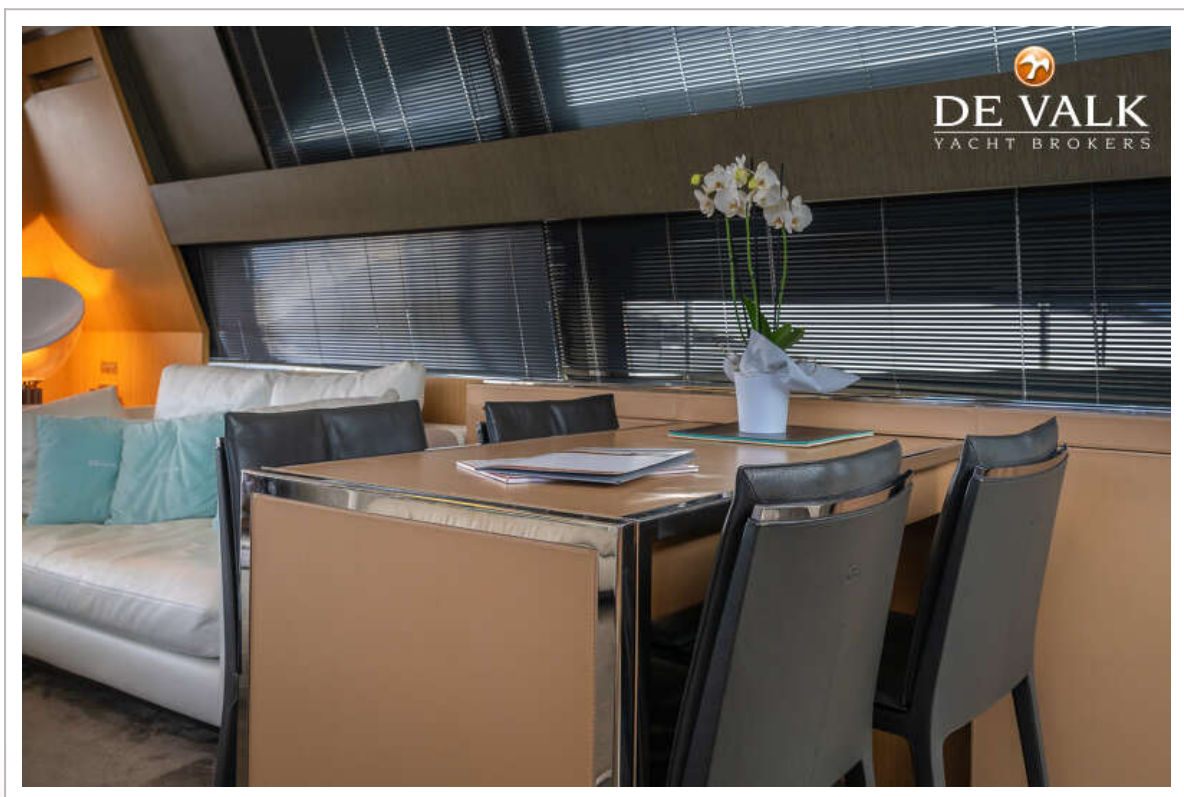




# RIVA 86 DOMINO



# RIVA 86 DOMINO



# RIVA 86 DOMINO





# RIVA 86 DOMINO

