



DE VALK
YACHT BROKERS



LINSSEN 29.9 AC



DE VALK
YACHT BROKERS

BROKER'S COMMENTS

Linssen stands for typical Dutch quality yachts, thanks to their maneuverability, sturdiness and comfort and are found throughout Europe. This 29.9AC has proven her capabilities in the waters of the French, Dutch and German canals and rivers. The spacious saloon and double cabins makes a longer stay on board possible. That is why this Linssen Grand Sturdy 29.9AC could be your new home to explore the European waterways due to her limited air draft. She is equipped with a 2017 Volvo-Penta 50 hp. diesel engine and has a lot of storage space throughout the boat. She can be seen in our sales marina

Reinier van der Wolf

SPECIFICATIONS

Dimensions	9.35 x 3.35 x 1.00 (m)	Builder	Linssen Yachts BV, Maasbracht
Built	2007	Cabins	2
Material	Steel	Berths	6
Engine(s)	1 x Volvo Penta D2-50 diesel	Hp/Kw	50.00 (hp), 36.80 (kw)
Asking price	sold (VAT)	Lying	at sales office

CONTACT

Sales office	De Valk Monnickendam B.V.	Telephone	+31 (0)299 65 63 50
Address	Hoogedijk 6 1145 PM Katwoude NL	E-mail	monnickendam@devalk.nl

DISCLAIMER

These particulars are given in good faith as supplied but cannot be guaranteed.



GENERAL

Model	LINSSSEN 29.9 AC
Type	motor yacht
LOA (m)	9,35
Beam (m)	3,35
Draft (m)	1,00
Air draft (m)	3,40
Air draft min (m)	2,50
Headroom (m)	1,94
Year built	2007
Builder	Linssen Yachts BV, Maasbracht
Country	The Netherlands
Displacement (t)	8
CE norm	C
Hull material	steel
Hull colour	Standard Linssen cream
Hull shape	multi hard chine
Superstructure material	steel
Rubbing strake	fender rope
Deck material	steel
Deck finish	non-skid paint
Superstructure deck finish	non-skid paint
Cockpit deck finish	teak Linssen
Antifouling (year)	2022 2023 2024
Window frame	aluminium
Window material	tempered glass
Deckhatch	1x Gebo
Portholes	Gebo
Mast can be lowered	manual
Fuel tank (litre)	steel - 240
Level indicator (fuel tank)	Wema



Freshwater tank (litre)	polyethylene - 240
Level indicator (freshwater)	Wema
Blackwater tank (litre)	polyethylene - 235
Level indicator (blackwater)	Wema
Blackwater tank extraction	deck extraction + pump : Rheinstrom
Wheel steering	hydraulic - Stazo
Outside helm position	yes
More info on hull	The hull was repainted above the waterline in August '22. In March / April '22, she was sandblasted under the waterline under owners supervision and painted with interyacht.

ACCOMMODATION

Cabins	2
Berths	6
Interior	cherry
Floor	teak and holly Effect
Aft deck	yes
Saloon	yes
Headroom saloon (m)	1,94
Heating	diesel ducted hot air - Eberspächer Airtronic M D4
Aft Cabin	yes
Dinette to convert into berth	yes
Galley	yes
Countertop	plastic + cherry wood
Sink	stainless steel - single enkel Einzel
Cooker	calor gas - Eno two burner twee pits Zweiflammen
Fridge	with freezer compartment - Domestic
Hot water system	220V + engine - Isotemp Basic (24 l.)
Water pressure system	electrical - Jabsco
Owners cabin	double bed - front voor Forne
Bed length (m)	2,00 x 1,50
Wardrobe	shelves



Bathroom	en suite
Toilet	en suite
Toilet system	manual - Jabsco
Wash basin	at the toilet
Shower	en suite
Guest cabin 1	double bed - After acher Hinten
Bed length (m)	2,00 x 1,29
Wardrobe	hanging and shelves
Toilet	en suite
Toilet system	manual - Jabsco
Wash basin	at the toilet

MACHINERY

No of engines	1
Make	Volvo Penta
Type	D2-50
HP	50
kW	36.80
Fuel	diesel
Year installed	2018
Engine hours	1075
Engine cooling system	freshwater heat exchanger
Drive	shaft
Shaft seal	yes
Engine controls	bowden cable - Morse
Gearbox	hydraulic - ZR Hurth marine
Bowthruster	electric - Vetus 55 kgf
Exhaust	watercooled
Thrust bearing	Python-Drive
Propeller type	fixed
Propeller blades	3



Propeller shaft material	stainless steel
Shaft lubrication	water
Electric bilge pump	Rule
Electrical installation	220v
Start battery	1x (2022)
Service battery	2x (2022)
Battery monitor	Mastervolt
Battery charger	Mastervolt Mass
Inverter	Telecom
Shorepower	with cable

NAVIGATION

Compass	No compass (seller has never used)! - Raymarine ST60+ Compass
Multi control display	Raymarine Tridata ST60+ (trip speed log)
Navigation lights	yes

EQUIPMENT

Fixed windscreen	hinged windscreen
Bimini	yes
Winter cover	yes
Cockpit table	1x
Cockpit chairs	4x
Bathing platform	yes
Boarding ladder	stainless steel
Deck shower	hot and cold
Anchor	yes
Windlass	electrical - Vetus
Sea railing	stainless steel
Grab rail (superstructure)	stainless steel
Railing side opening gates	yes



Wiper	2x
Horn	yes
Fenders	yes
Mooring lines	yes
Radio	LeGeek K301 Bluetooth radio
Cockpit speakers	yes
Speakers in salon	Sony



LINSSEN 29.9 AC



LINSSEN 29.9 AC



LINSSEN 29.9 AC



LINSSEN 29.9 AC



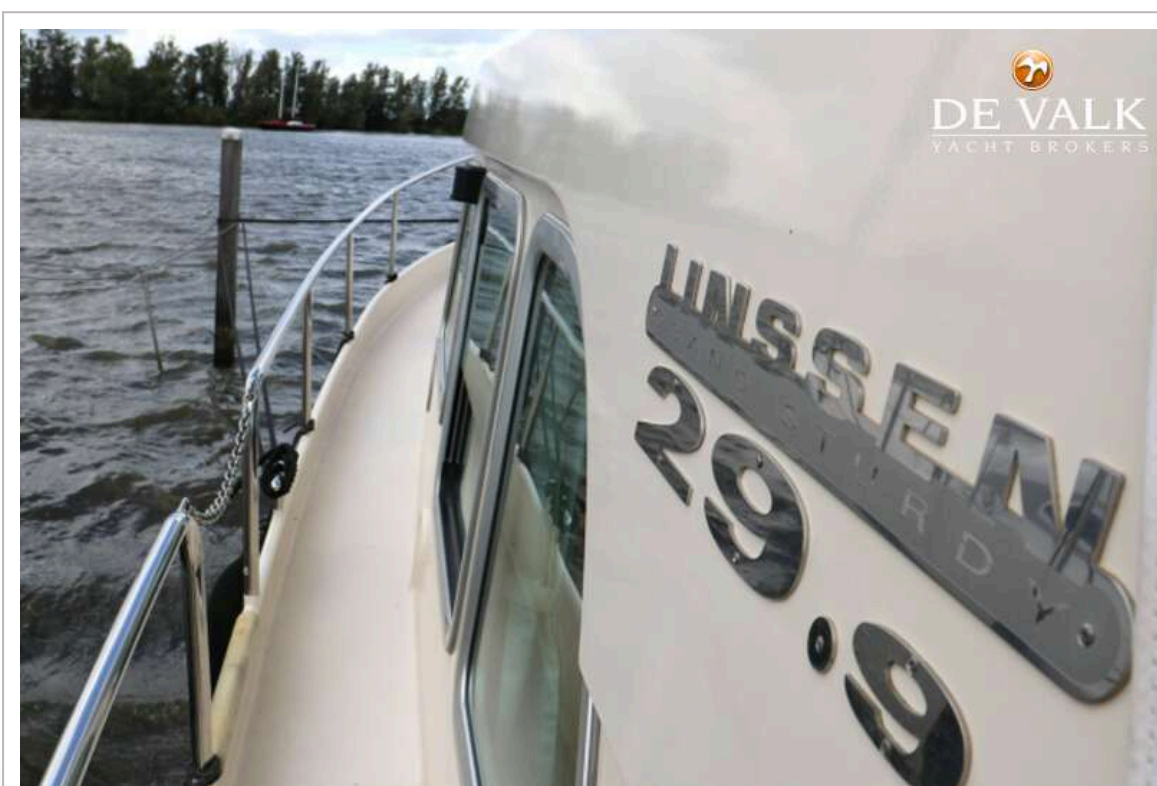
LINSSEN 29.9 AC



LINSSEN 29.9 AC



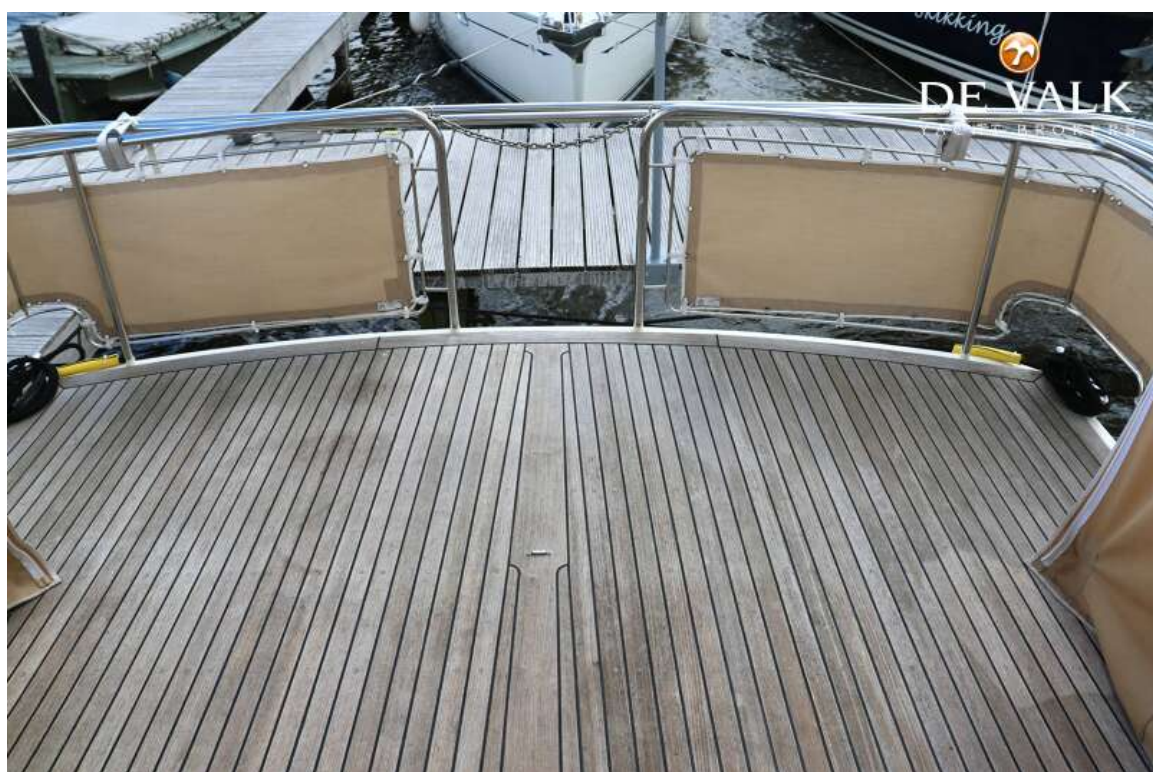
LINSSEN 29.9 AC



LINSSEN 29.9 AC



LINSSEN 29.9 AC



LINSSEN 29.9 AC



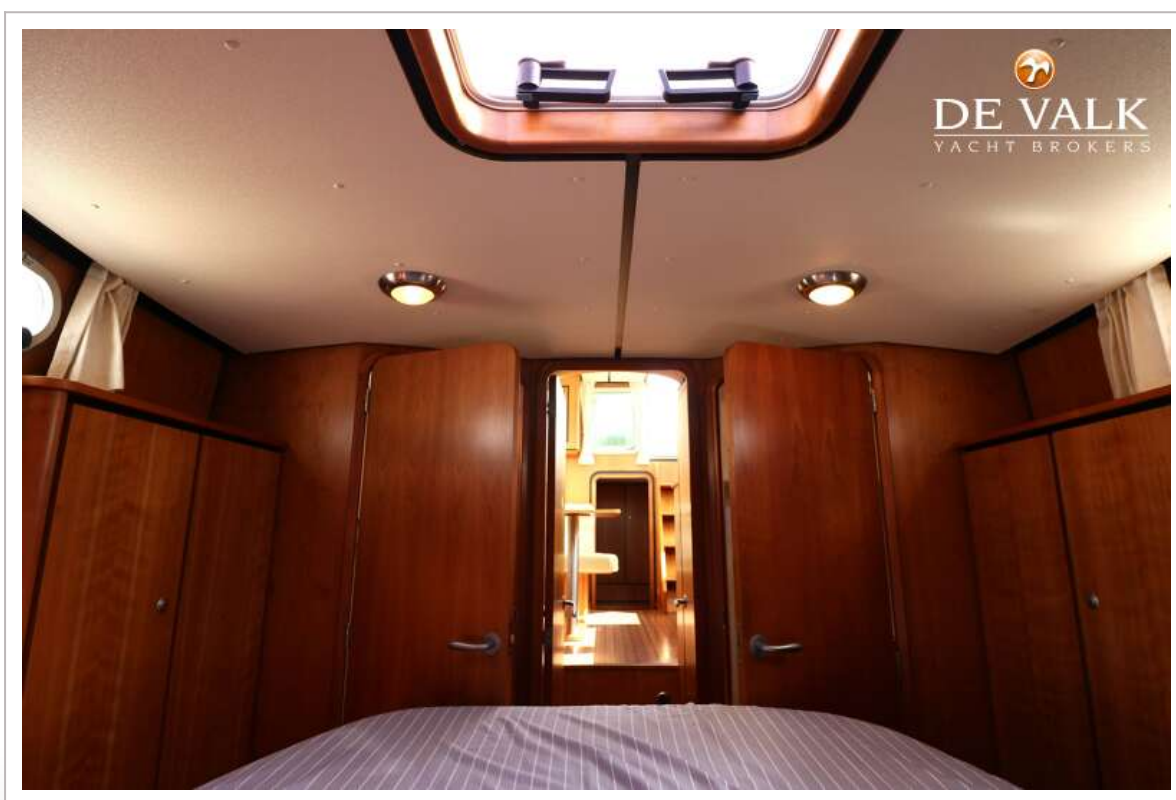
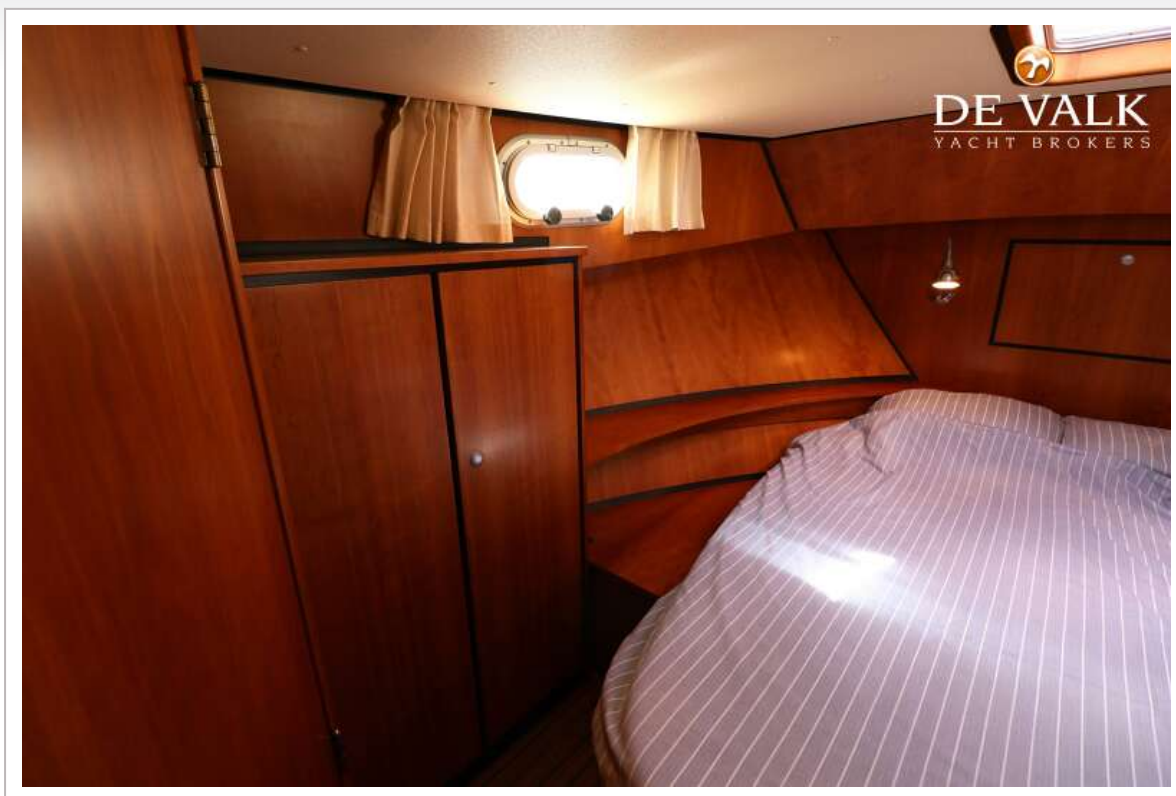
LINSSEN 29.9 AC



LINSSEN 29.9 AC



LINSSEN 29.9 AC



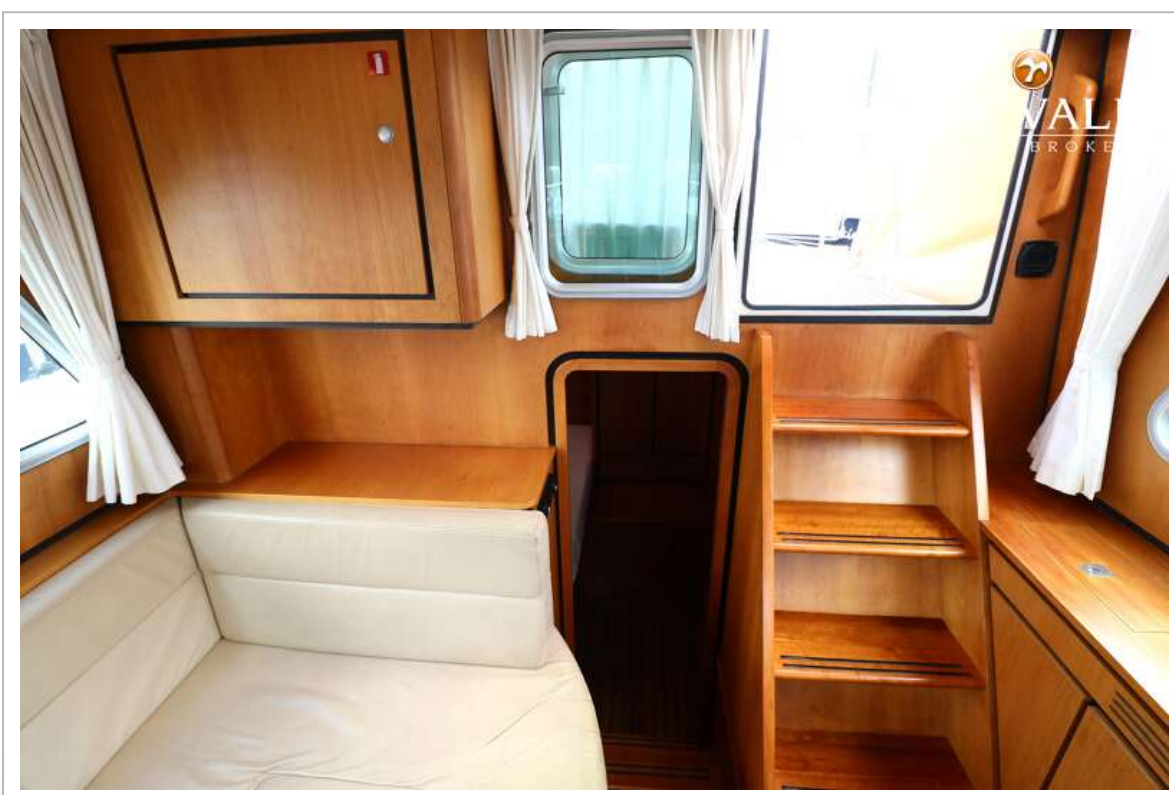
LINSSEN 29.9 AC



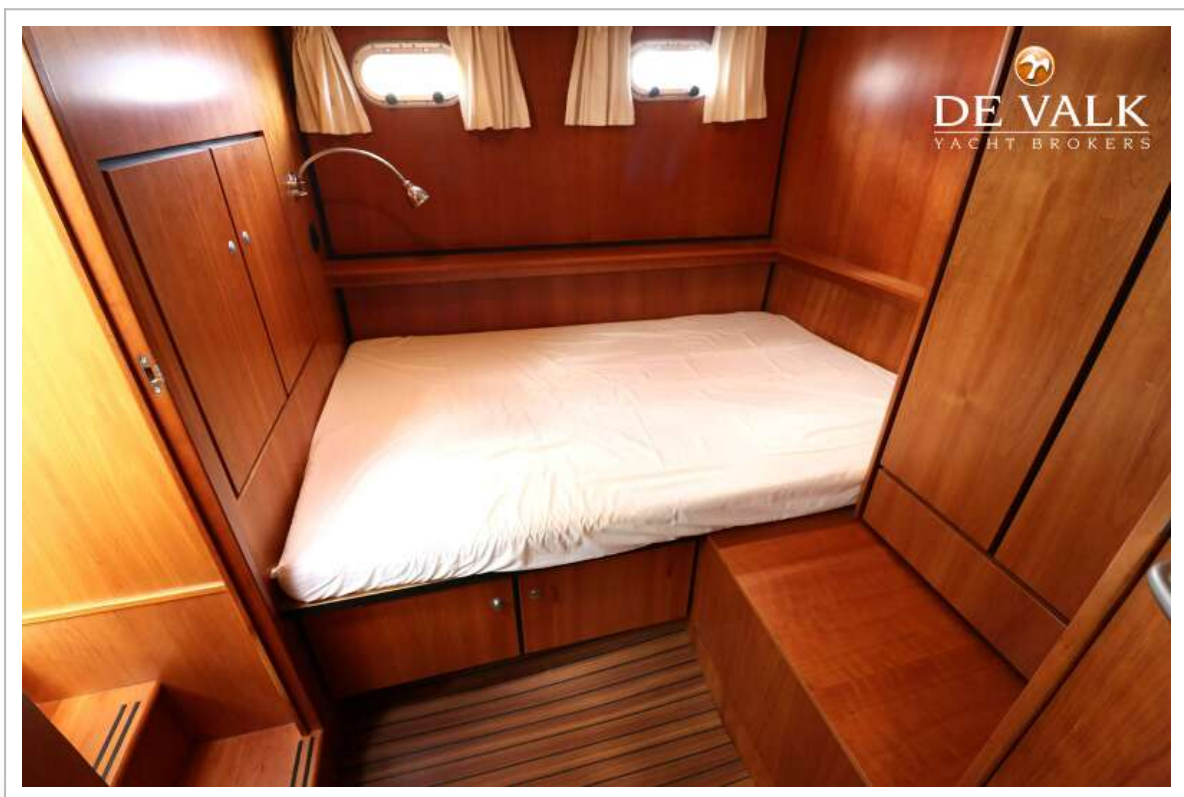
LINSSEN 29.9 AC

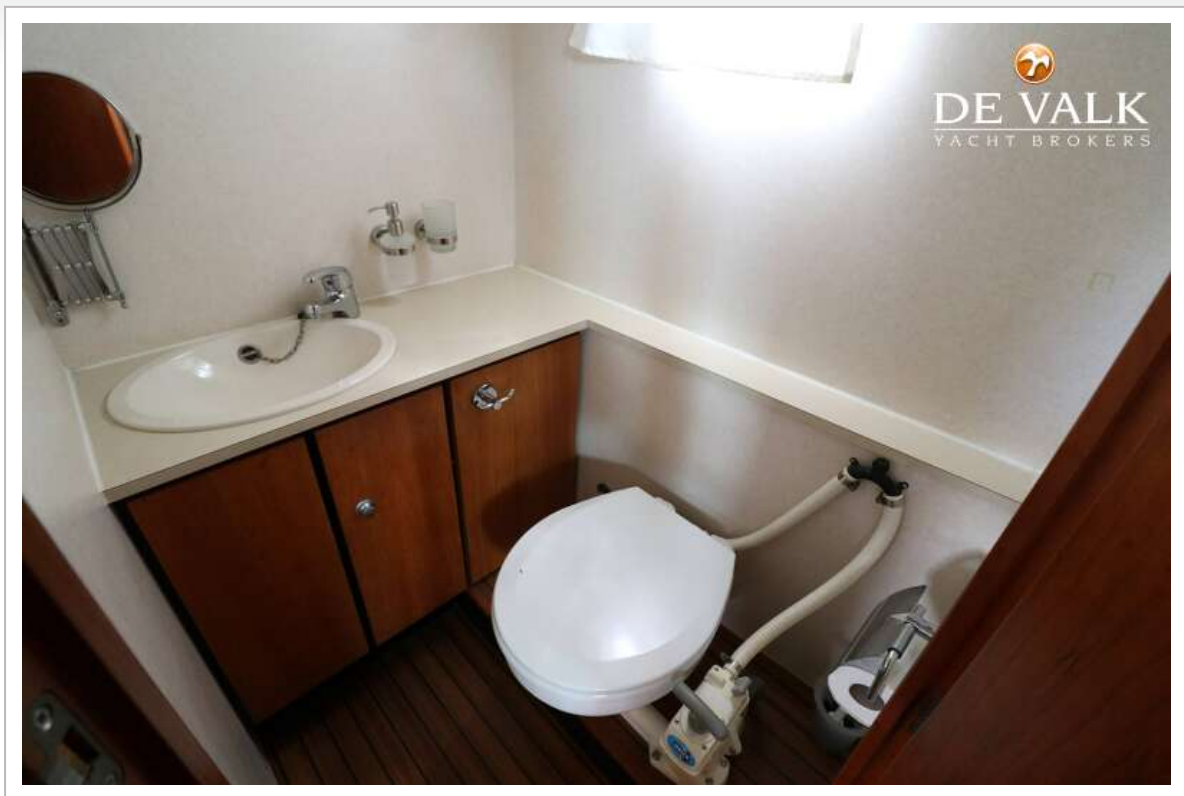


LINSSEN 29.9 AC



LINSSEN 29.9 AC





LINSSEN 29.9 AC



LINSSEN 29.9 AC

