



DE VALK
YACHT BROKERS



PRESIDENT 43



DE VALK
YACHT BROKERS

PRESIDENT 43

BROKER'S COMMENTS

Are you ready to embark on your next adventure or settle into a cozy, floating home? This 1992 President 43 Double Cabin, British Registered, could be the perfect fit. She is a semi displacement Trawler Yacht and was built and complies with Norske Veritas certification standards. Ideal for both seasoned boaters and those new to the liveaboard lifestyle, it offers reliable Caterpillar diesel V8 engines, a spacious double-cabin layout, and a meticulously cared-for interior. Whether you're cruising or planning to live on the water, this boat has everything you need for comfort and peace of mind.

Oliver Stehula

SPECIFICATIONS

Dimensions	13.03 x 4.60 x 2.40 (m)	Builder	Horizon Yachts
Built	1992	Cabins	2
Material	GRP	Berths	4
Engine(s)	2 x Caterpillar 3208 diesel	Hp/Kw	2 x 210.00 (hp), 154.56 (kw)
Asking price	€ 165.000 (VAT Paid)	Lying	at sales office

CONTACT

Sales office	De Valk Palma	Telephone	+34 971 40 29 11
Address	Port. Cala Nova, Avda. Joan Miro, 327 07015 Palma de Mallorca ES	E-mail	palma@devalk.nl

DISCLAIMER

These particulars are given in good faith as supplied but cannot be guaranteed.



PRESIDENT 43

GENERAL

Model	PRESIDENT 43
Type	motor yacht
LOA (m)	13,03
Beam (m)	4,60
Draft (m)	2,40
Year built	1992
Builder	Horizon Yachts
Country	Taiwan
Displacement (t)	25,4
Hull material	GRP
Flybridge	yes
Fuel tank (litre)	1600
Freshwater tank (litre)	450
Wheel steering	hydraulic
Inside helm position	yes

ACCOMMODATION

Cabins	2
Berths	4
Floor	carpet
Dinette to convert into berth	yes
Sink	One double
Cooker	Electric
Microwave	yes
Fridge	yes
Freezer	yes
Coffee maker	yes
Toilet system	yes
Toilet system	electric



MACHINERY

No of engines	2
Make	Caterpillar
Type	3208
HP	210
kW	154.56
Fuel	diesel
Year installed	1992
Maximum speed (kn)	10
Cruising speed (kn)	7,5
Consumption (l/hr)	30
Engine hours	2200
Engine cooling system	freshwater heat exchanger
Drive	shaft
Engine controls	electrical & bowden cable
Gearbox	yes
Propeller type	fixed
Electrical installation	yes
Generator	Onan 6,5 KVA
Running hours generator	1762
Batteries	yes
Battery monitor	Victron Energy BMV- 700
Battery charger	Victron Energy Centaur 12V/ 40 Amp
Battery charger/inverter	Victron Energy Multi Plus Compact 12V/ 2000VA/ 80 Amp
Solar panel	2 x 150 Watt with Victron Energy MPPT 150/60 Charger
Shorepower	with cable

NAVIGATION

Depth sounder/log	1x Autohelm Tridata / 1x Raymarine Log and Speed
VHF	Raymarine Ray 54E
Autopilot	2x Autohelm 7000



Radar/GPS yes

EQUIPMENT

Cockpit cushions yes

Cockpit table yes

Bathing platform yes

Boarding ladder yes

Gangway yes

Anchor Rocna

Anchor chain yes

Anchor 2 CQR Plough

Windlass electrical

Dinghy yes

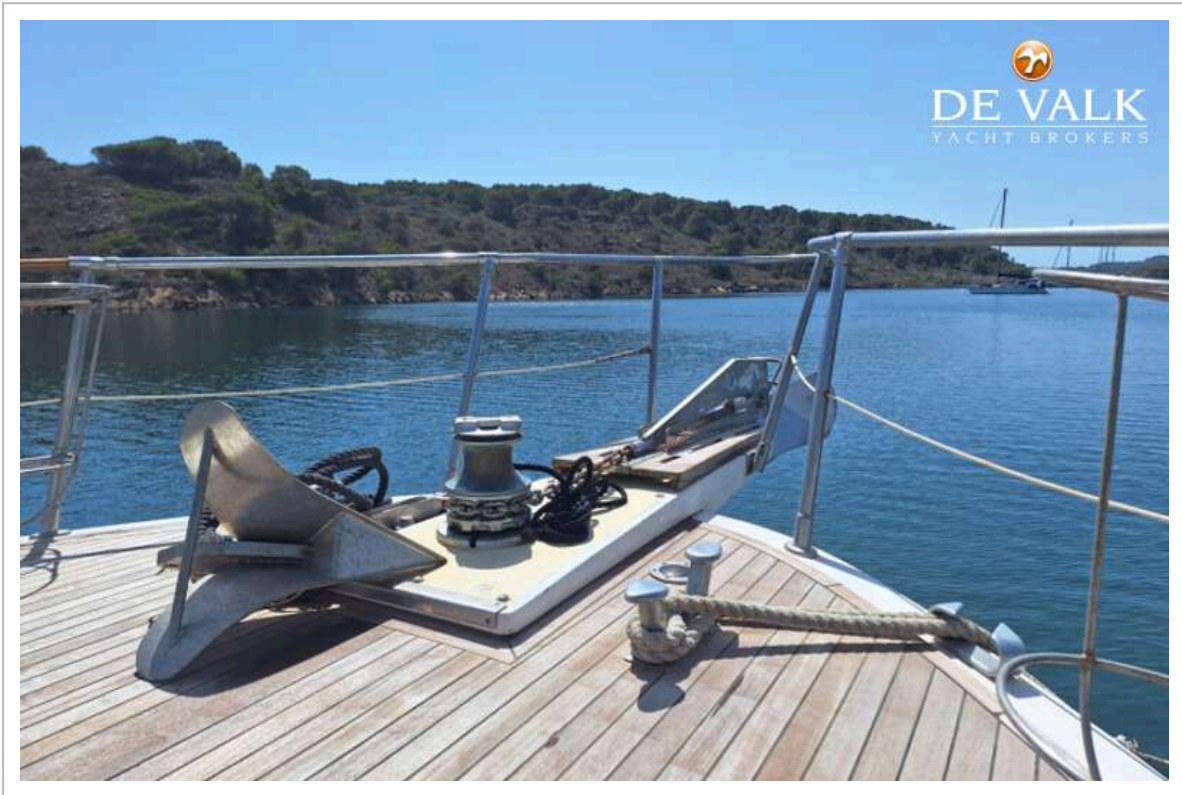
Outboard Honda 2,3

Outboard support yes

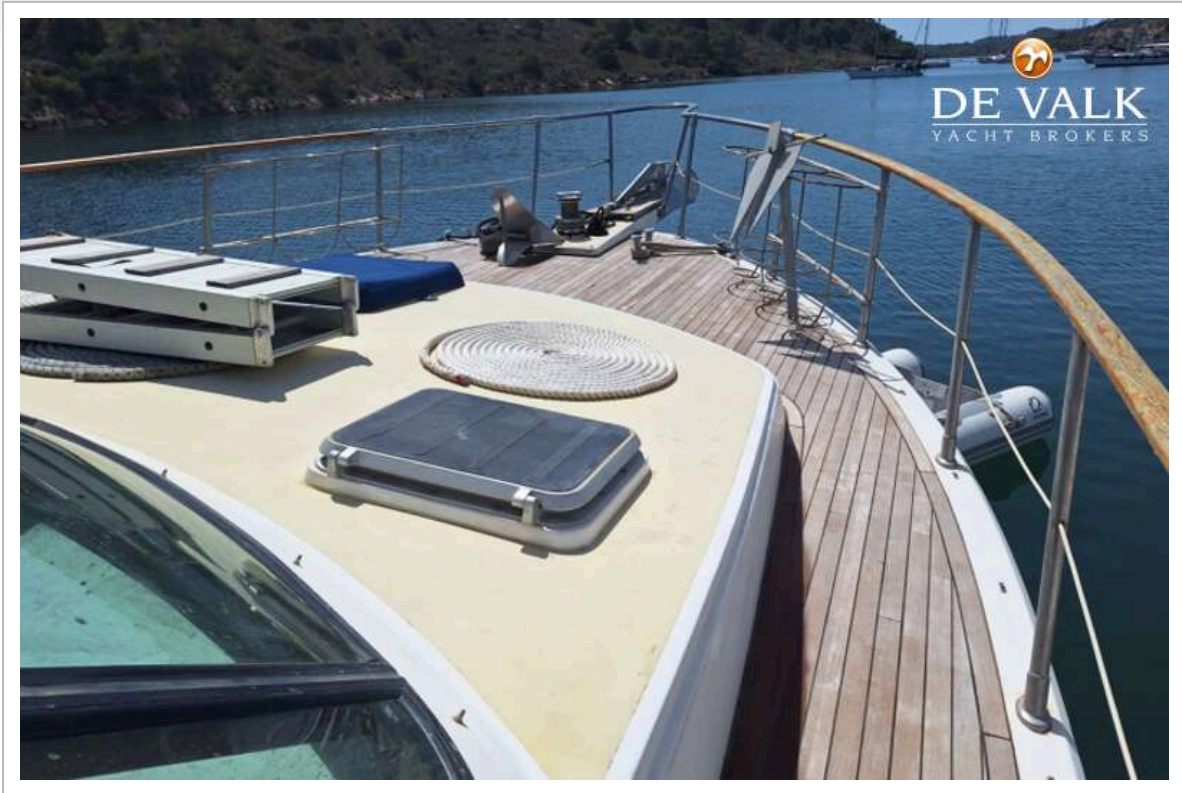
Deck crane manual For out boarder



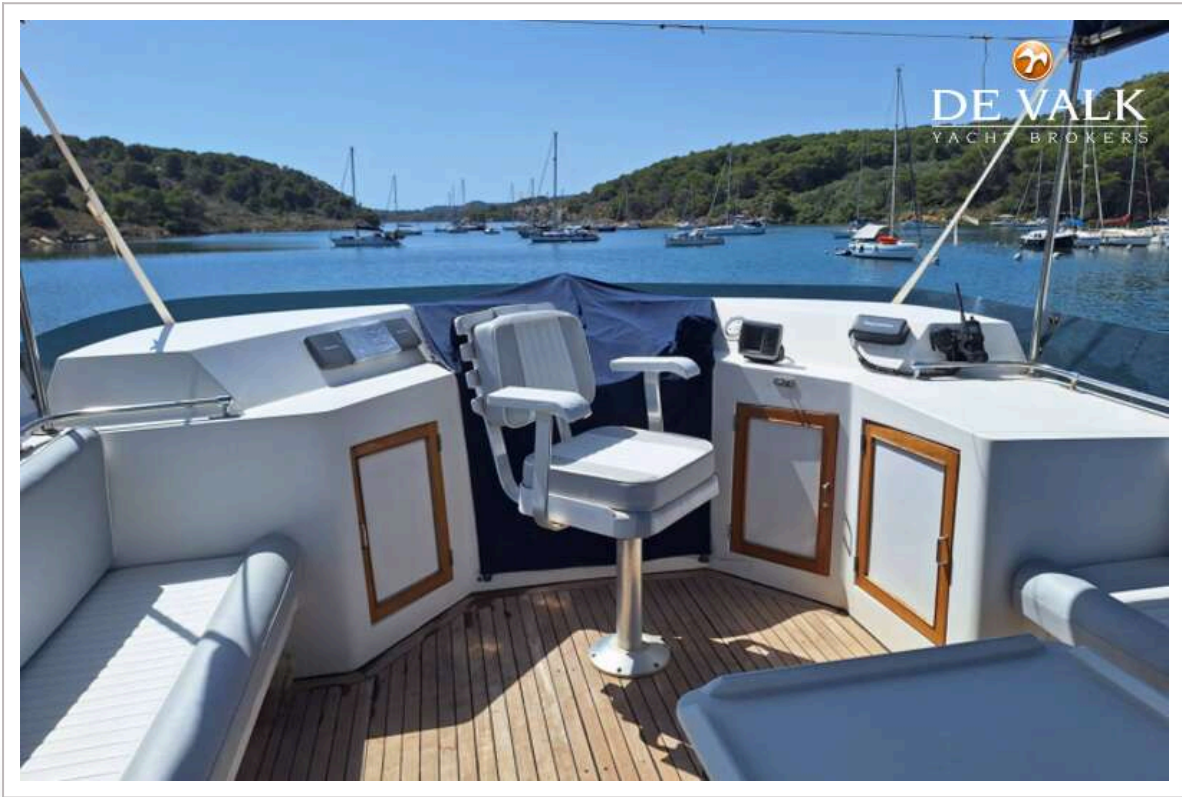
PRESIDENT 43



PRESIDENT 43



PRESIDENT 43



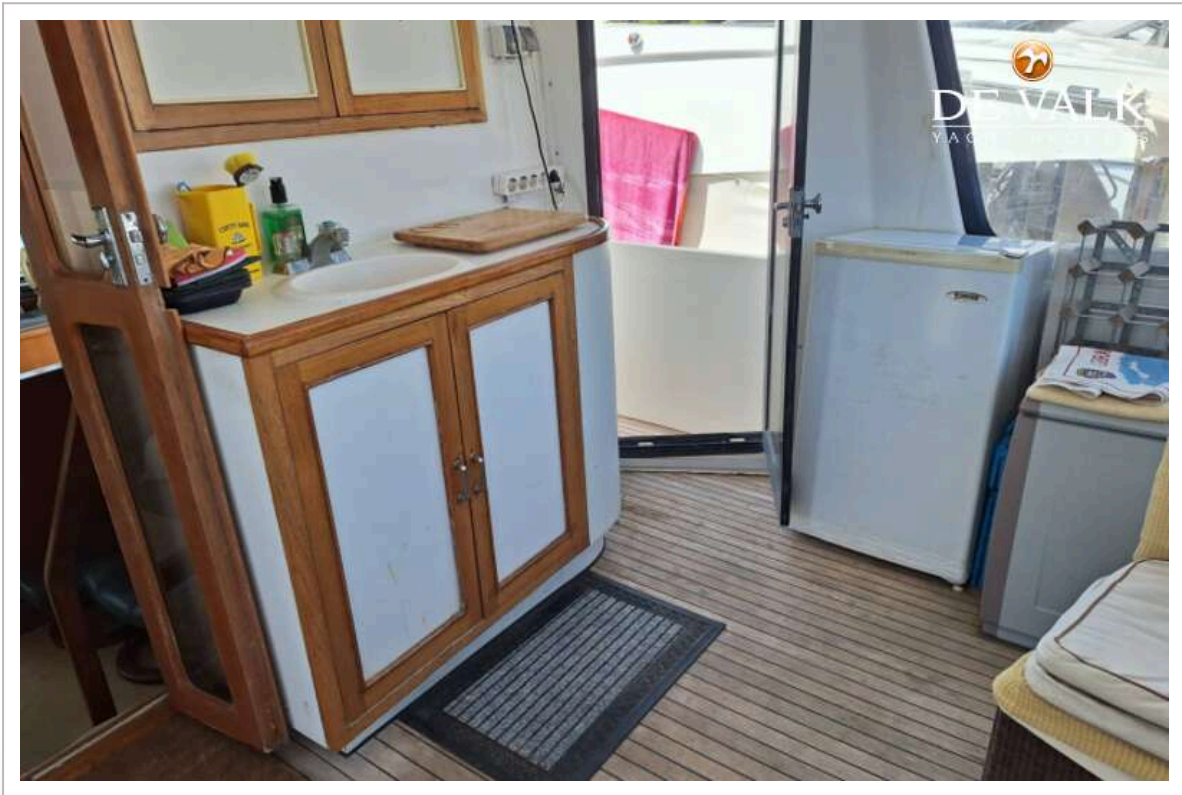
PRESIDENT 43



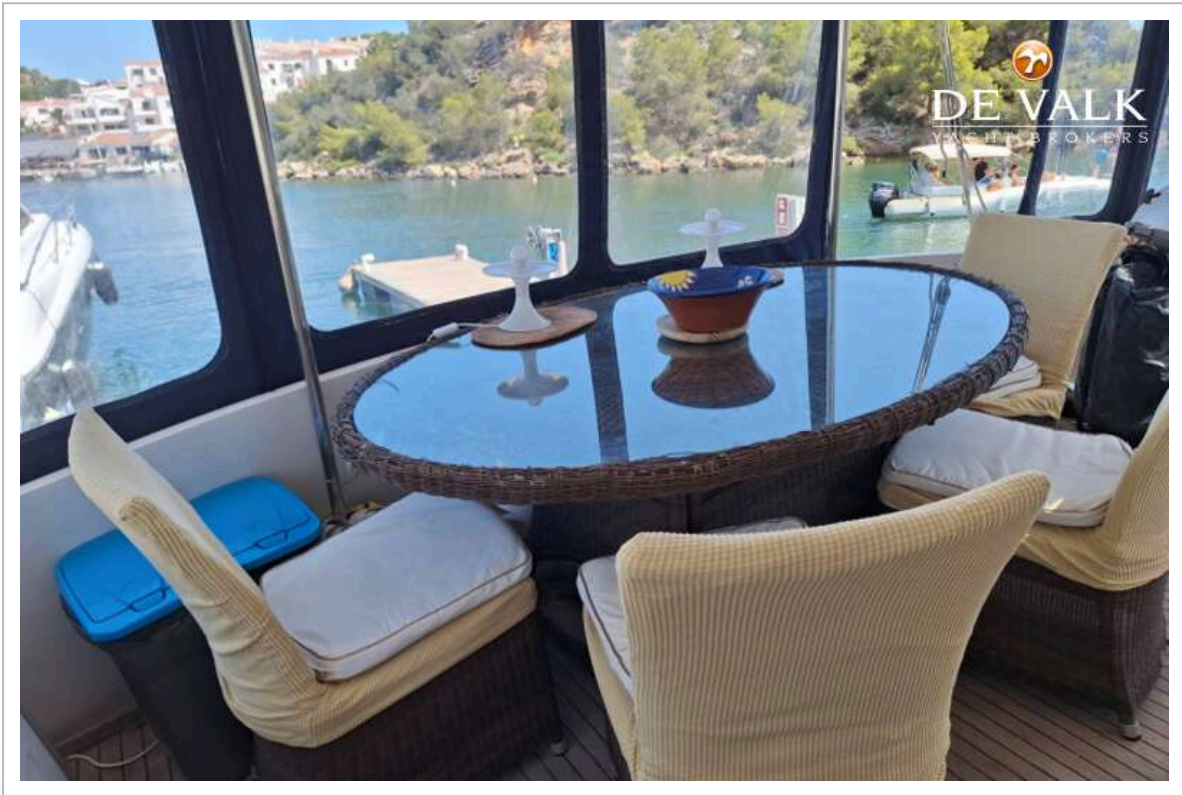
PRESIDENT 43



PRESIDENT 43



PRESIDENT 43



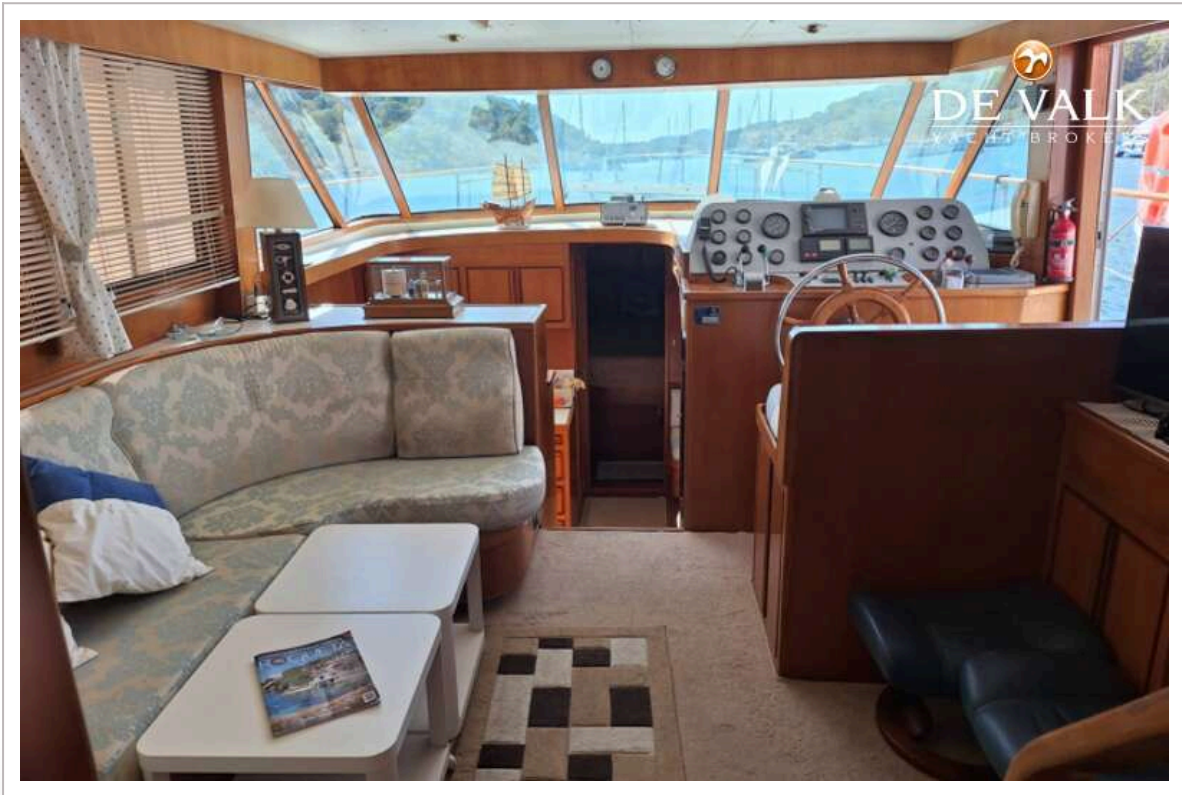
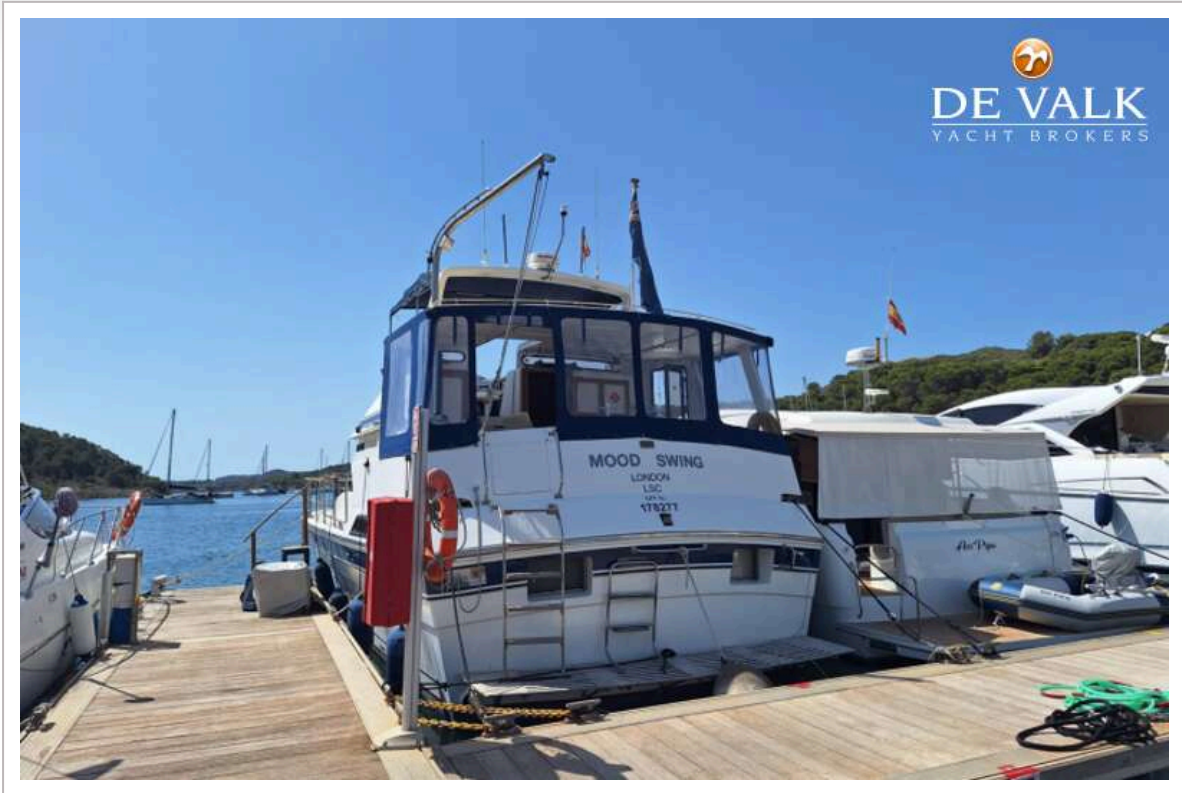
PRESIDENT 43



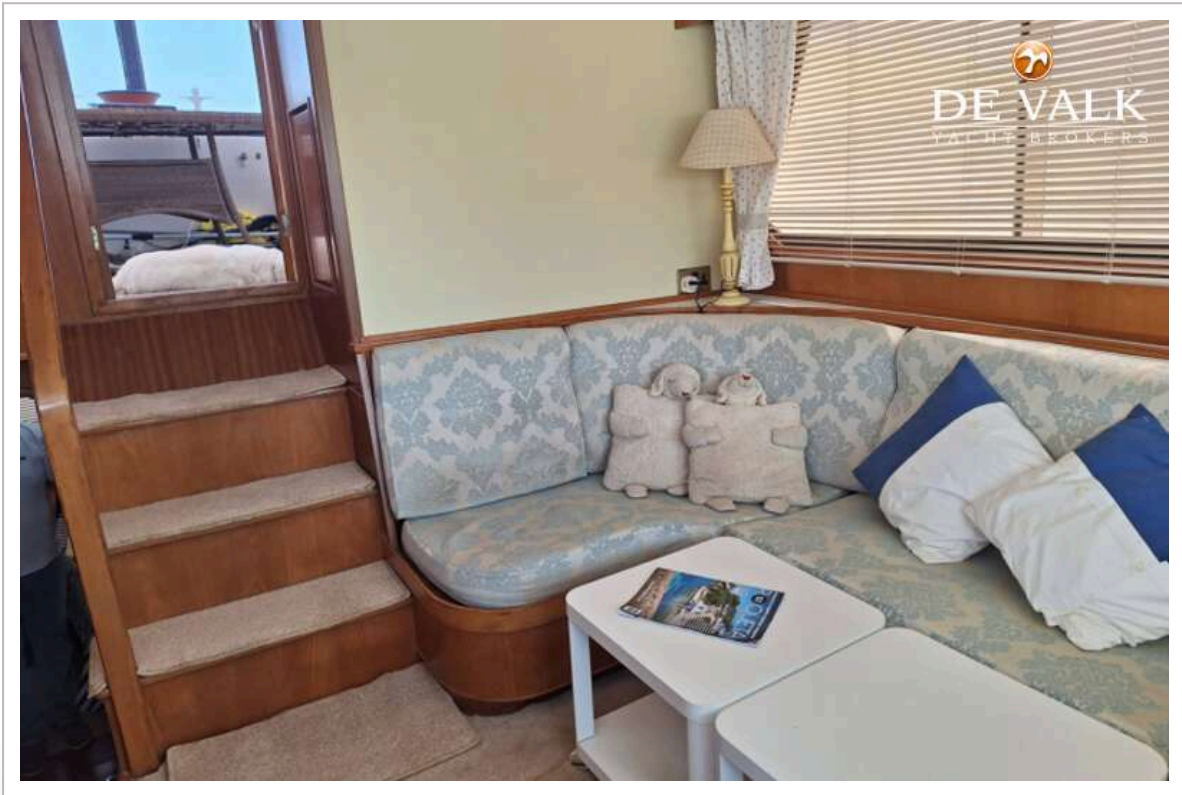
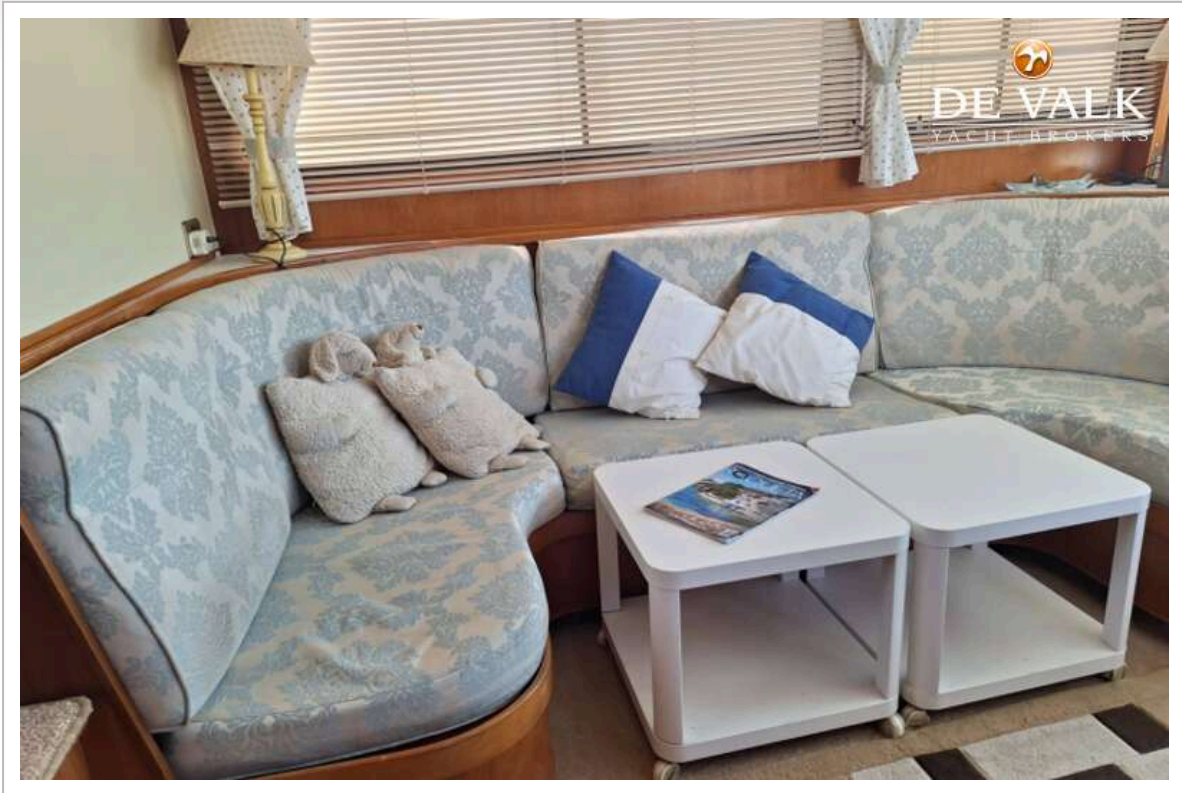
PRESIDENT 43



PRESIDENT 43



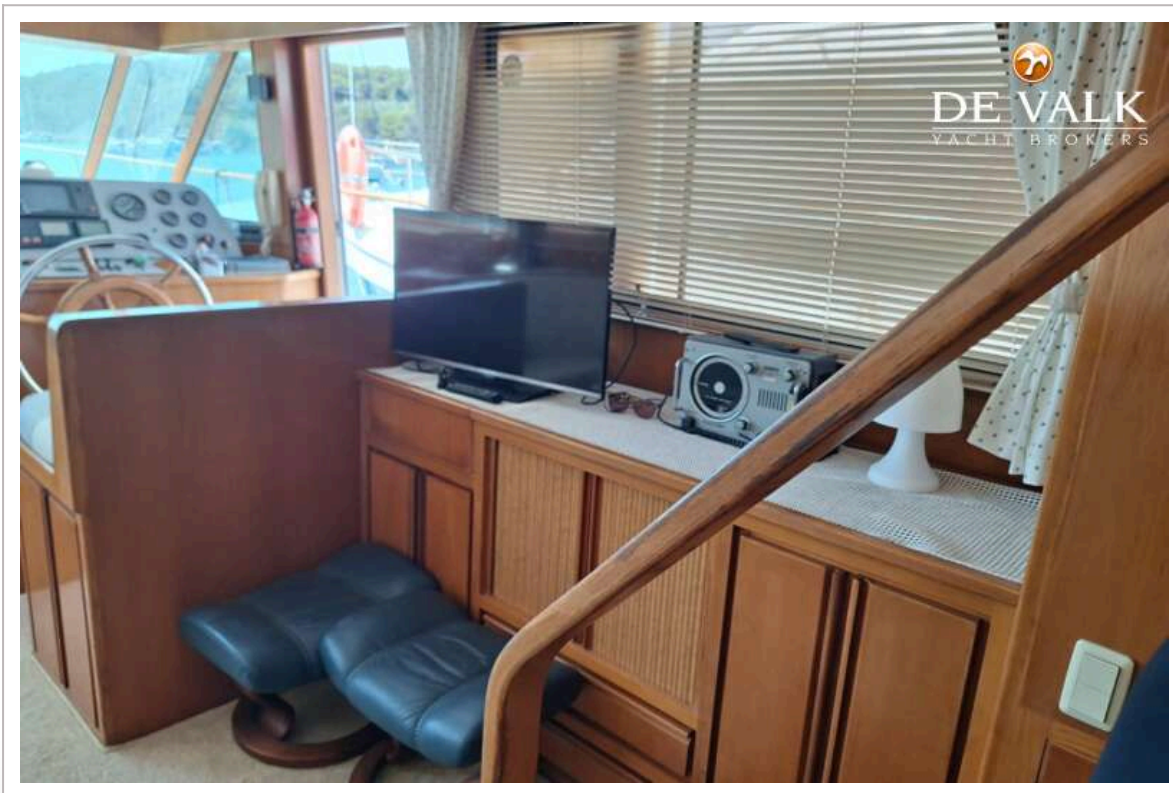
PRESIDENT 43



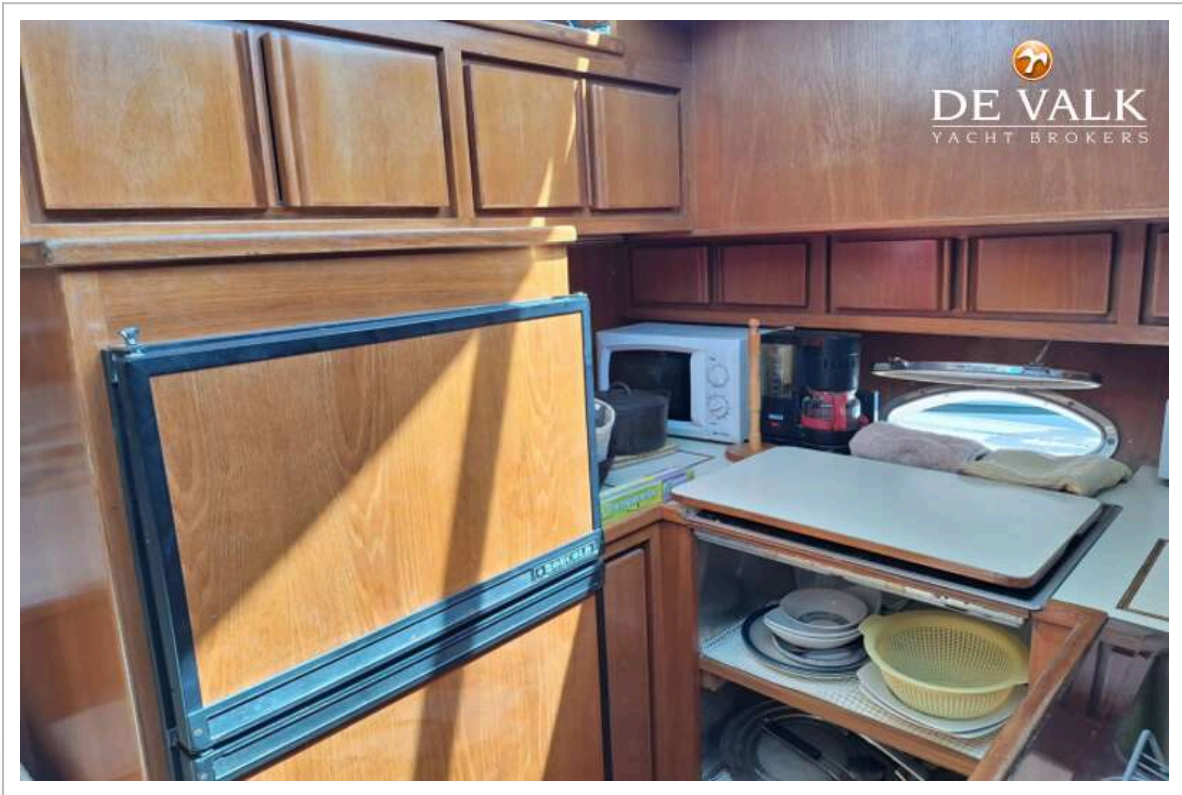
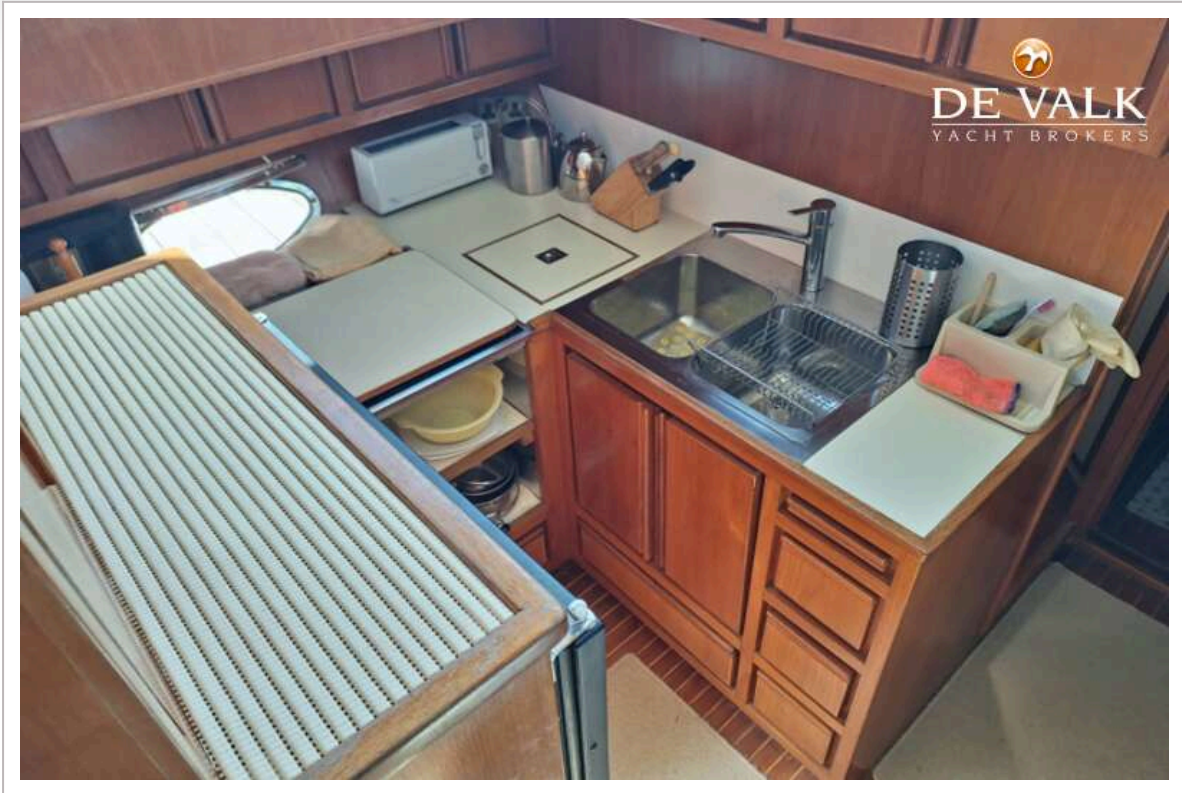
PRESIDENT 43



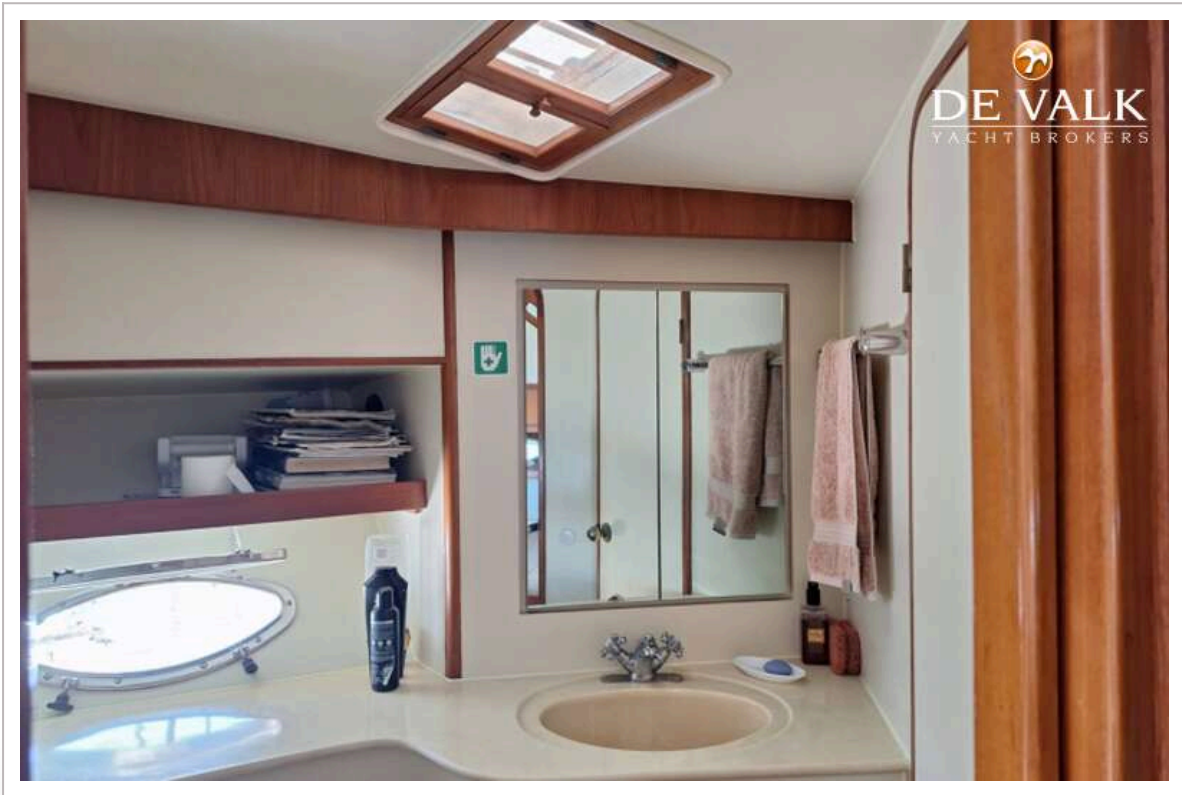
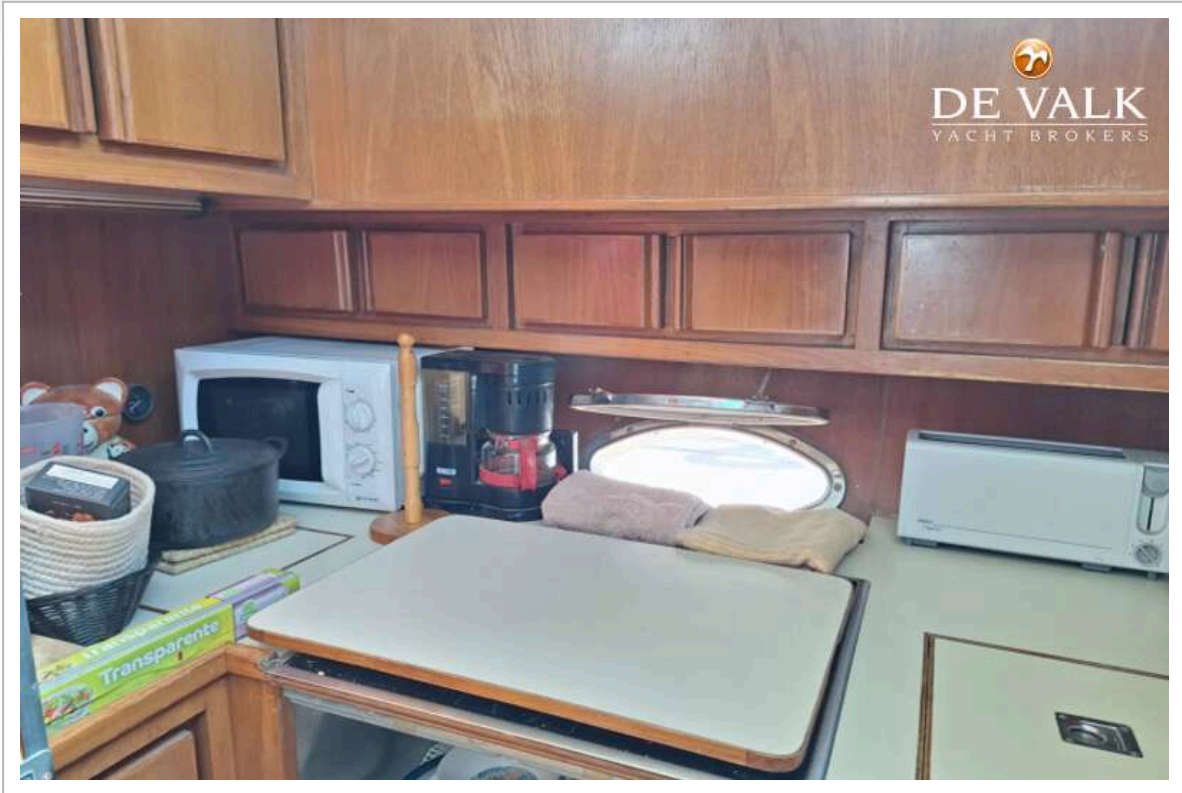
PRESIDENT 43



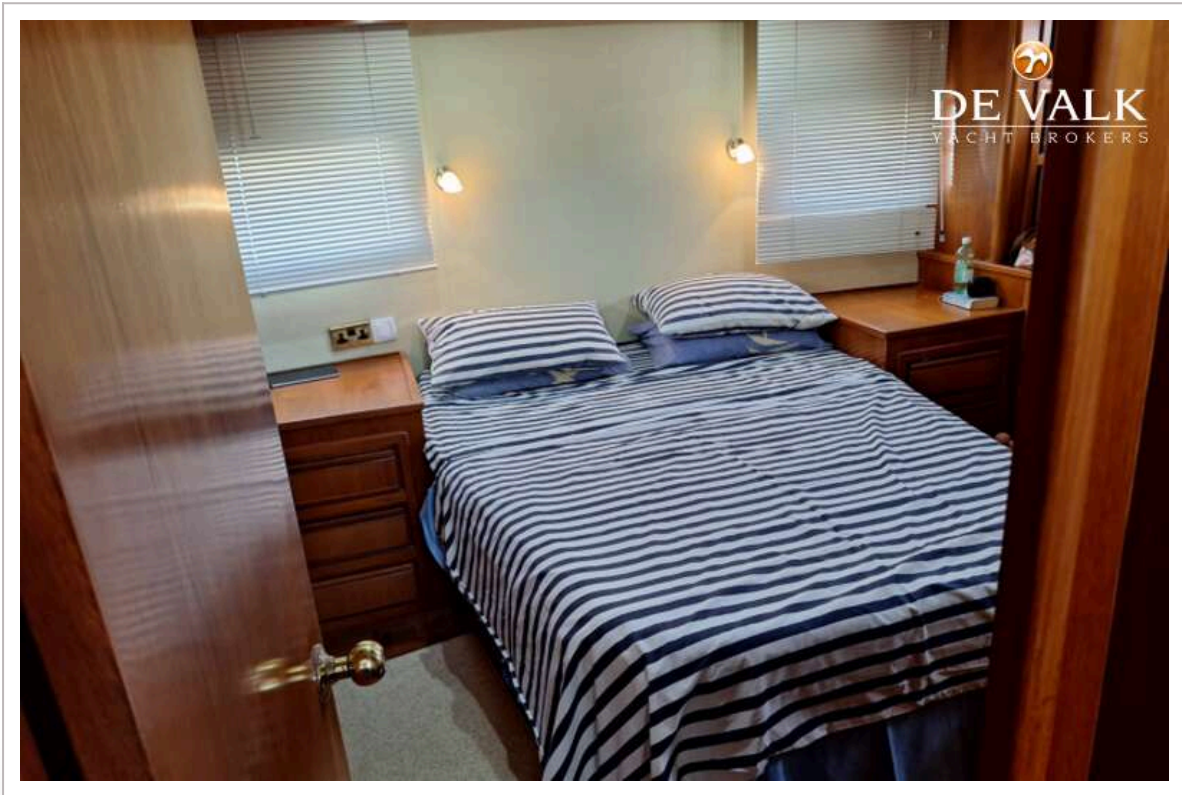
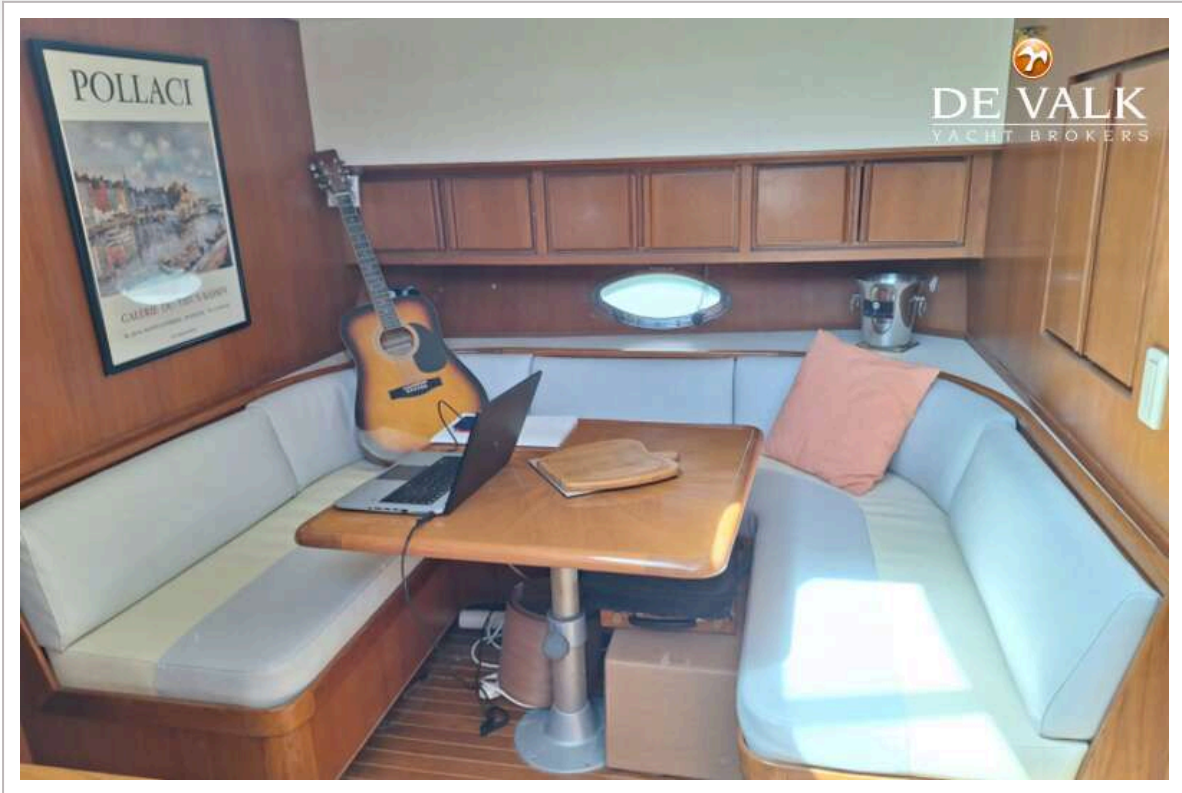
PRESIDENT 43



PRESIDENT 43



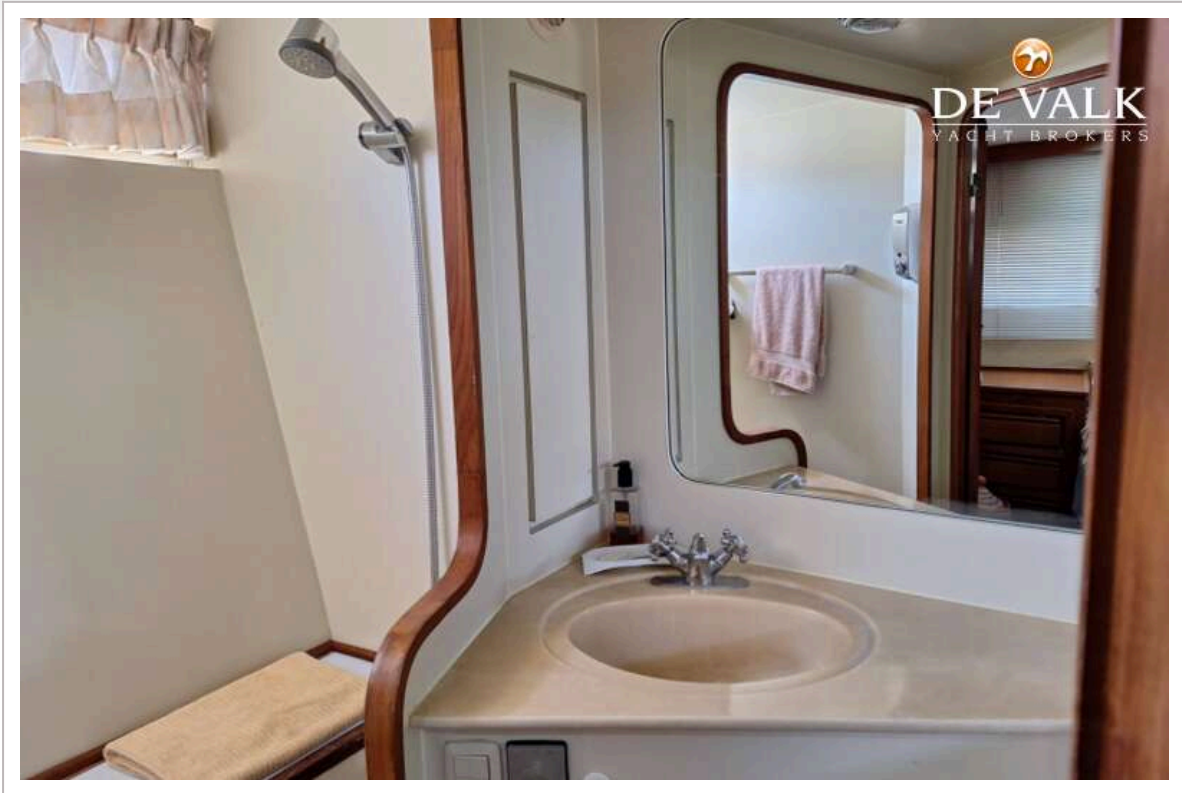
PRESIDENT 43



PRESIDENT 43



PRESIDENT 43



PRESIDENT 43

