



SUNSEEKER 52 CARIBBEAN



SUNSEEKER 52 CARIBBEAN

BROKER'S COMMENTS

Sunseeker always produce stylish and well-built craft, and the 52 Caribbean is no exception. Its looks are distinctive, performance is more than adequate, and seakeeping is good. The interior provides a good balance between entertaining and living areas, and there is plenty of open-air space. The interior is in very good conditions while the exterior shows some weathering. Available for viewing in the province of Almeria.

Jörg Hellmich

SPECIFICATIONS

Dimensions	15.86 x 4.60 x 1.30 (m)	Builder	Sunseeker
Built	1991	Cabins	3
Material	GRP	Berths	8
Engine(s)	2 x MAN TGE diesel	Hp/Kw	2 x 694.00 (hp), 510.78 (kw)
Asking price	€ 105.000 (VAT Paid)	Lying	at sales office

CONTACT

Sales office	De Valk Almeria	Telephone	+34 950 497 825
Address	Puerto de Almerimar Darsena de la Batea Almerimar ES	E-mail	almeria@devalk.nl

DISCLAIMER

These particulars are given in good faith as supplied but cannot be guaranteed.



SUNSEEKER 52 CARIBBEAN

GENERAL

Model	SUNSEEKER 52 CARIBBEAN
Type	motor yacht
LOA (m)	15,86
LWL (m)	12,50
Beam (m)	4,60
Draft (m)	1,30
Air draft min (m)	5,00
Headroom (m)	1,98
Year built	1991
Builder	Sunseeker
Country	United Kingdom
Displacement (t)	25
Gross tonnage	17,5
CE norm	NA
Hull material	GRP
Hull colour	blue
Hull shape	Fast Displacement Hull
Superstructure material	GRP
Rubbing strake	stainless steel
Deck material	GRP
Deck finish	non-skid moulded in
Superstructure deck finish	non-skid moulded in
Cockpit deck finish	teak
Window frame	aluminium
Window material	perspex
Deckhatch	Lewmar
Portholes	stainless steel
Insulation	foam
Flybridge	yes
Flybridge cover	yes



SUNSEEKER 52 CARIBBEAN

Flybridge cockpit cover	yes
Radar arch	yes
Fuel tank (litre)	1200
Fuel tank 2 (litre)	1200
Level indicator (fuel tank)	Gauge
Freshwater tank (litre)	800
Level indicator (freshwater)	Gauge
Blackwater tank (litre)	stainless steel 50
Blackwater tank extraction	deck extraction + pump
Level indicator (greywater)	LED
Wheel steering	hydraulic
Inside helm position	yes
Flybridge helm position	hydraulic

ACCOMMODATION

Cabins	3
Berths	8
Layout	3 cabin version with utility room
Floor	wood
Deck saloon	yes
Headroom saloon (m)	1,96
Air-conditioning	reverse cycle airco 4 x Marine Air System
Dinette	yes
Dinette to convert into berth	yes
Sliding door to aft deck	yes
Galley	L-shape
Countertop	wood
Sink	stainless steel
Cooker	induction Klarstein
Fridge	Cecool
Freezer	Cecool



SUNSEEKER 52 CARIBBEAN

Hot water system	220V + engine Boiler
Water pressure system	electrical
Kettle	yes
Hot water tap	yes
Coffee maker	yes
Crockery	yes
Owners cabin	double bed
Bed length (m)	2,00
Wardrobe	hanging and shelves
Toilet	en suite
Toilet system	electric
Wash basin	at the toilet
Shower	en suite
Guest cabin 1	twin single Port
Bed length (m)	2,00
Wardrobe	hanging and shelves
Toilet	en suite
Toilet system	electric
Wash basin	at the toilet
Shower	en suite
Guest cabin 2	twin single STB
Bed length (m)	2,00
Toilet	shared
Toilet system	electric
Wash basin	at the toilet
Shower	shared
Washing machine	Brandt
Flybridge	yes

MACHINERY

No of engines	2
---------------	---



SUNSEEKER 52 CARIBBEAN

Make	MAN
Type	TGE
HP	694
kW	510.78
Fuel	diesel
Year installed	1991
Maximum speed (kn)	24
Cruising speed (kn)	18
Engine hours	1826
Engine cooling system	freshwater heat exchanger
Drive	shaft
Shaft seal	yes
Engine controls	electrical
Gearbox	hydraulic
Bowthruster	electric Sidepower
Exhaust	watercooled
Propeller type	fixed
Propeller blades	4
Propeller shaft material	stainless steel
Shaft lubrication	water
Manual bilge pump	yes
Electric bilge pump	yes
Generator	wet exhaust Mase (10 kVA)
Start battery	6 x 12V (new 07.2024)
Service battery	6 x 12V (new 2023)
Battery monitor	Gauge
Battery charger	yes
Inverter	yes
Shorepower	with cable 240V
Trimtabs	yes



NAVIGATION

Compass on flybridge	yes
Electric compass	yes
Depth sounder	VDO
Log	Sumlog HS Gauge
Repeater	Furuno Ga As FET Display
VHF	Shipmate
VHF handheld	Raymarine 240E
Autopilot	Raymarine ST6001
Radar	Furuno FCV 611
GPS	Furuno GP 70 & GP 31 Navigator
Plotter/GPS	Raymarine RL80c & RL70c (fly)
Electronic chart(s)	yes
EPIRB	Mausmar
Navigation lights	yes

EQUIPMENT

Cockpit cover	Enclosure
Sun awning	yes
Cockpit cushions	yes
Cockpit chairs	yes
Bathing platform	yes
Boarding ladder	stainless steel
Transom door	yes
Gangway	Hydraulic
Deck shower	yes
Anchor	Delta
Anchor chain	yes
Windlass	electrical Lofrans
Sea railing	stainless steel
Grab rail (superstructure)	stainless steel

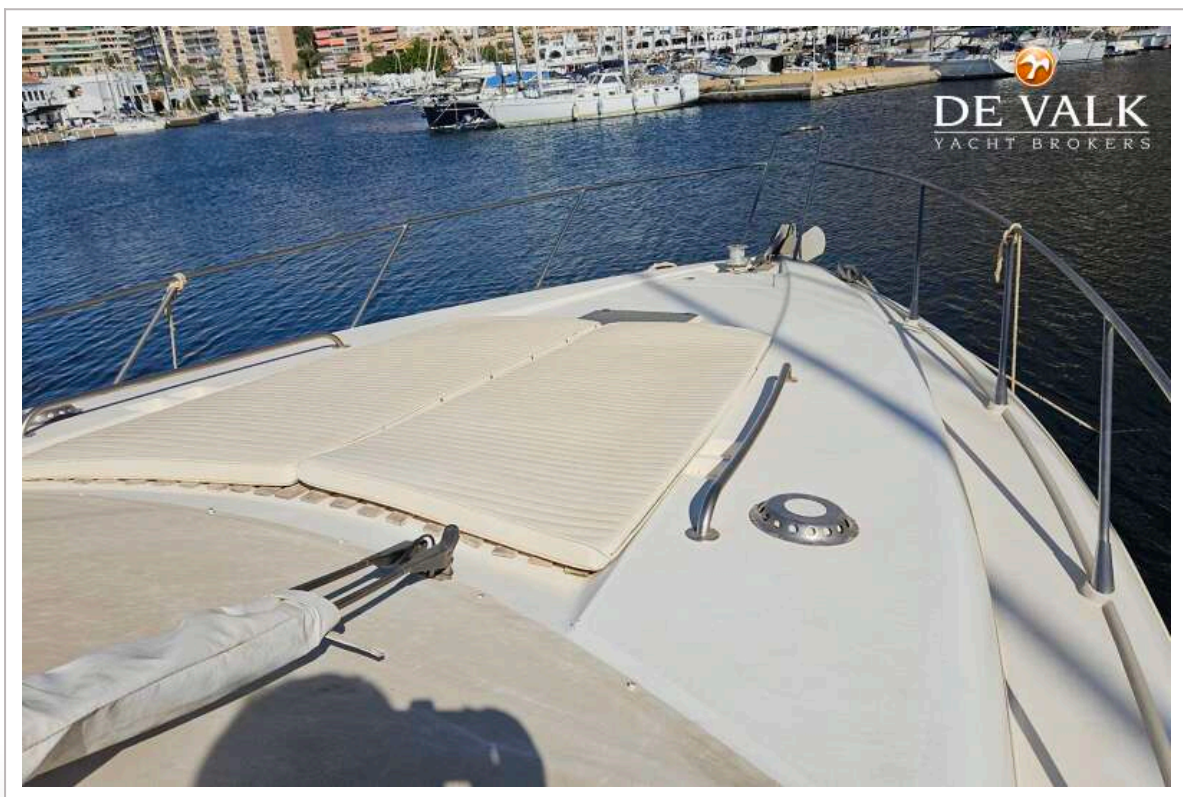


SUNSEEKER 52 CARIBBEAN

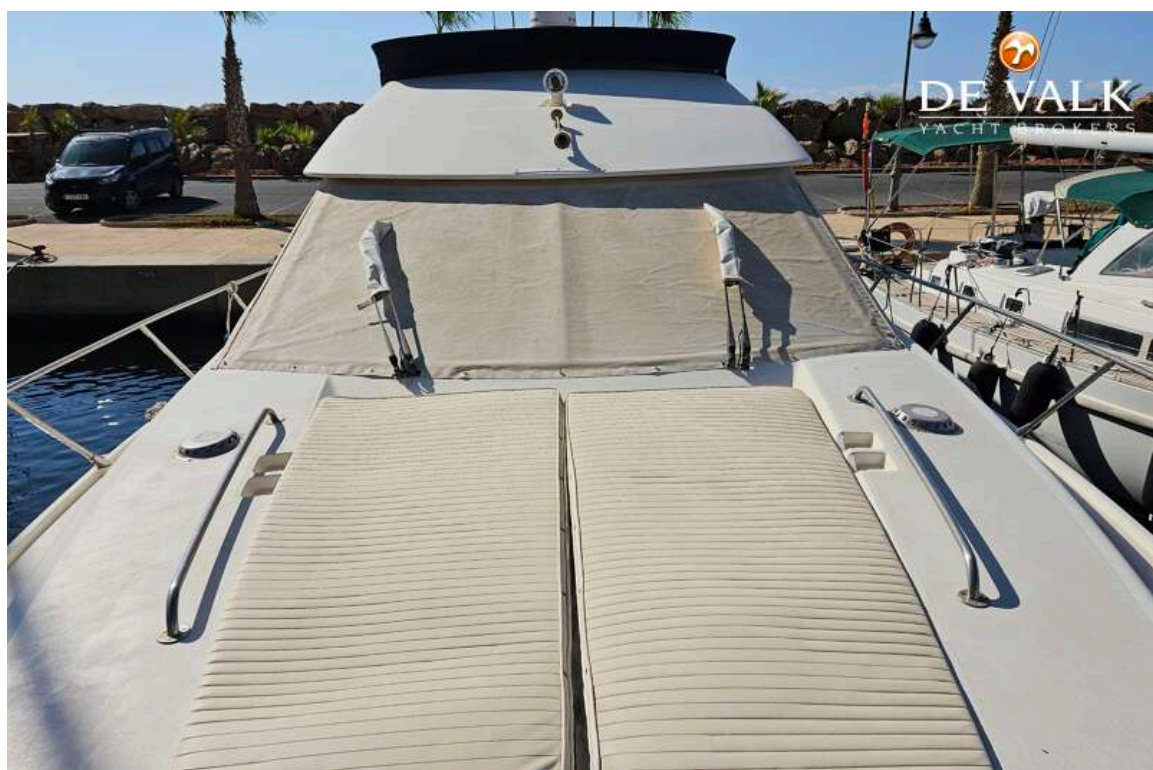
Pulpit	yes
Life raft	container Mausmar
Life raft (pers)	6
Lifejackets	yes
Danbuoy	Rings
Wiper	yes
Clearview window	yes
Horn	electric
Fenders	yes
Mooring lines	yes
TV	Samsung
Radio	Fusion
DVD player	Fusion
Cockpit speakers	Clarion
Speakers in salon	Clarion
Speakers in cabin	yes
Clock - barometer	yes
Fire extinguisher	yes
Extinguisher in engine room	yes



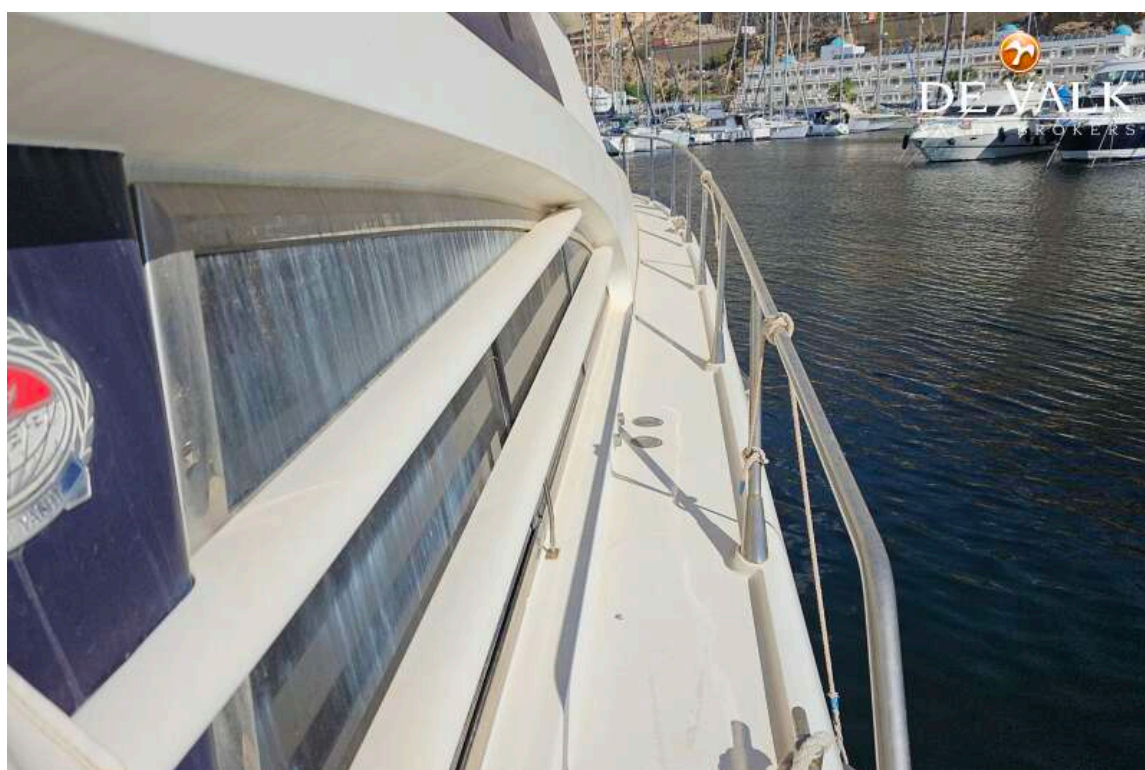
SUNSEEKER 52 CARIBBEAN



SUNSEEKER 52 CARIBBEAN



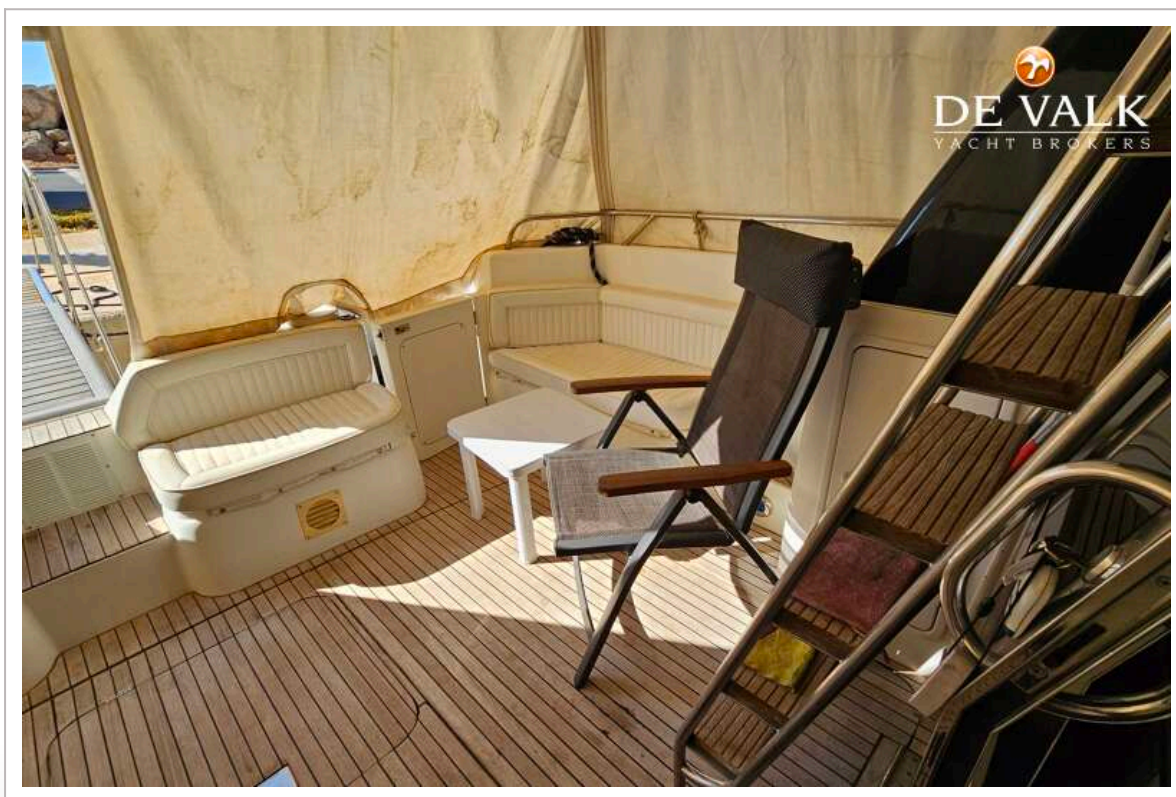
SUNSEEKER 52 CARIBBEAN



SUNSEEKER 52 CARIBBEAN



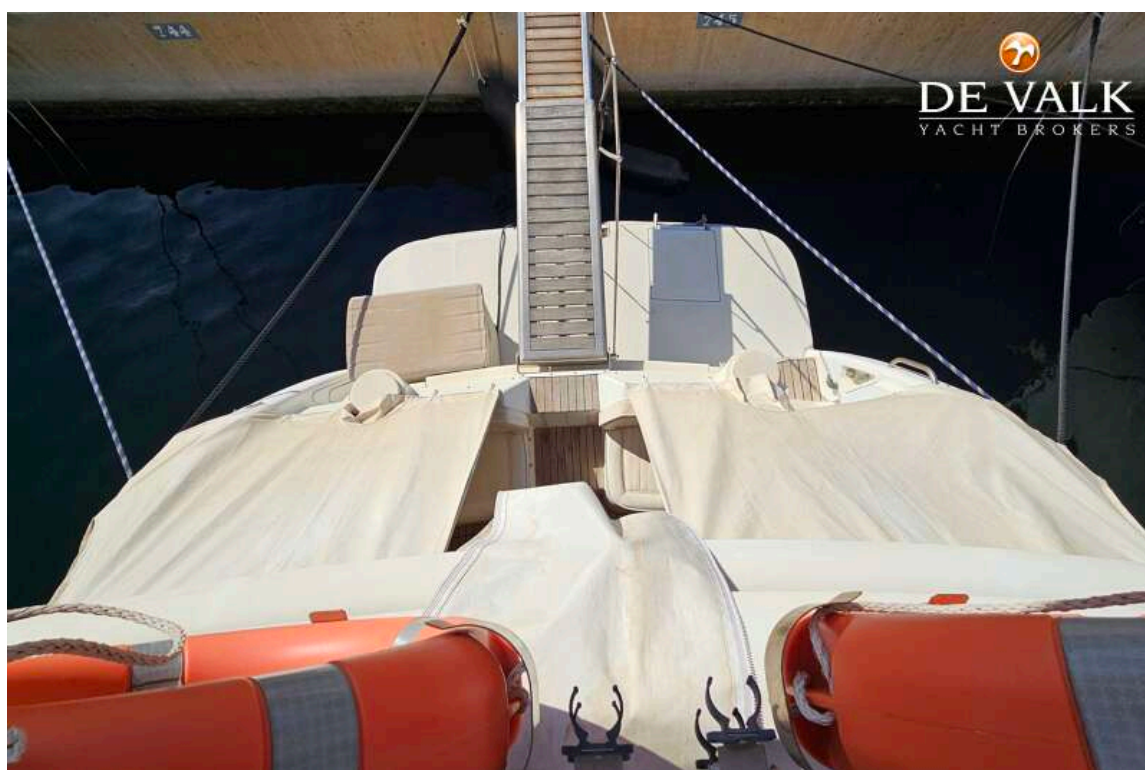
SUNSEEKER 52 CARIBBEAN



SUNSEEKER 52 CARIBBEAN



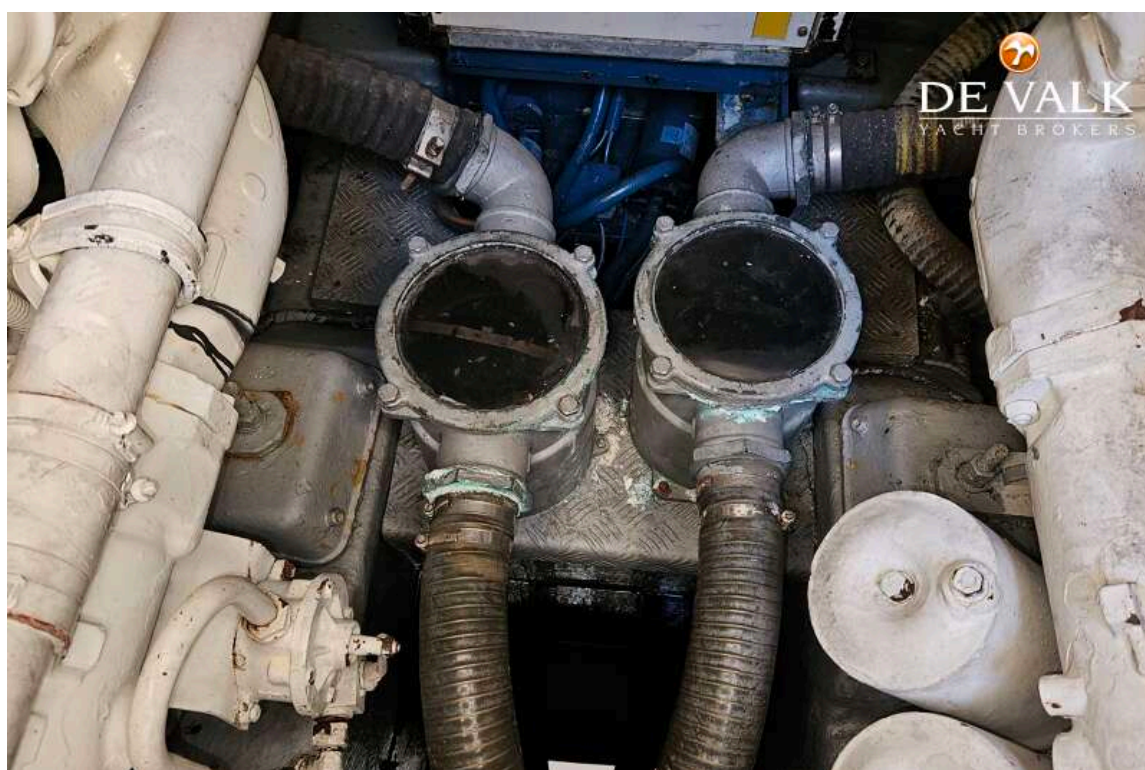
SUNSEEKER 52 CARIBBEAN



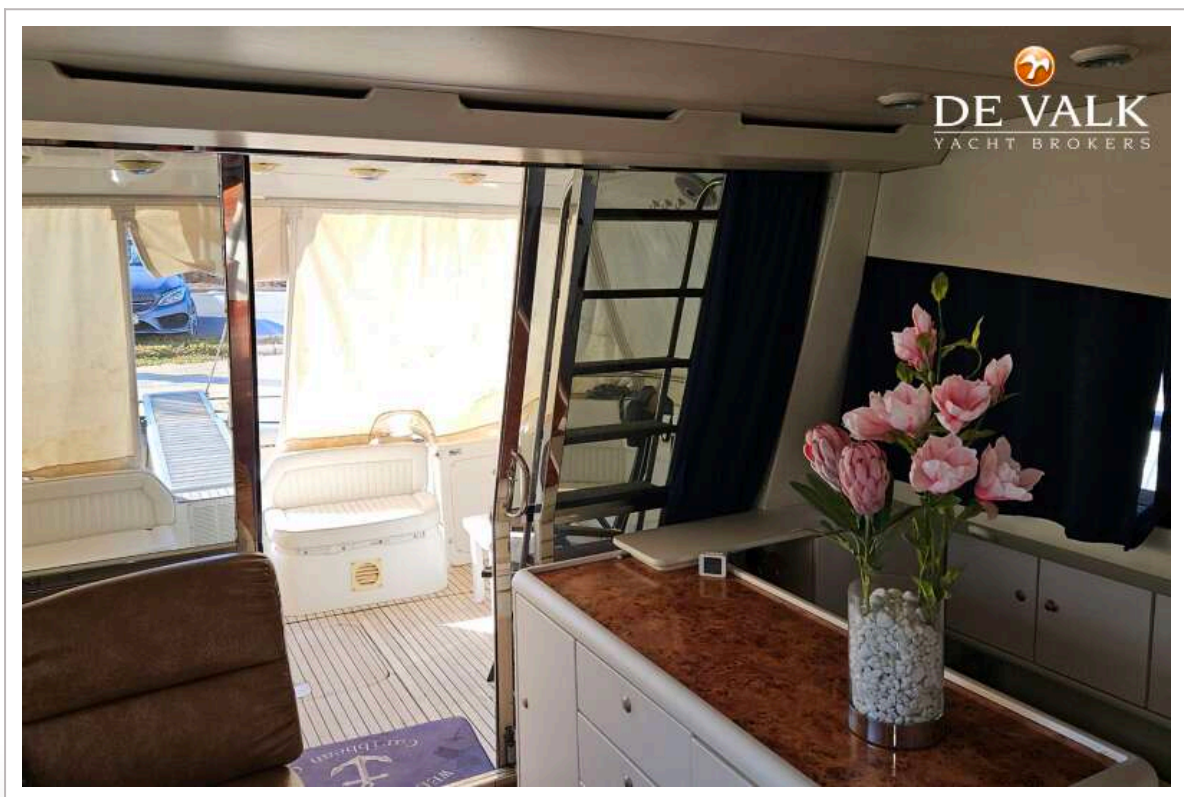
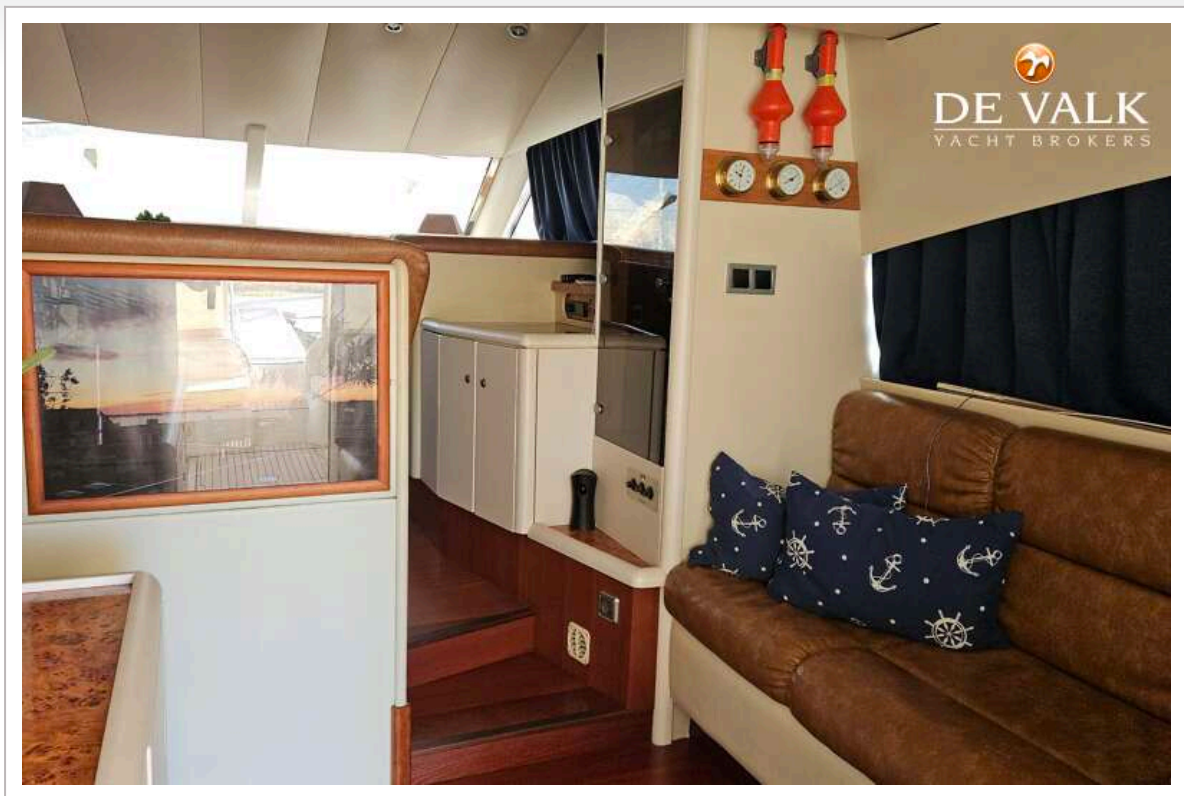
SUNSEEKER 52 CARIBBEAN



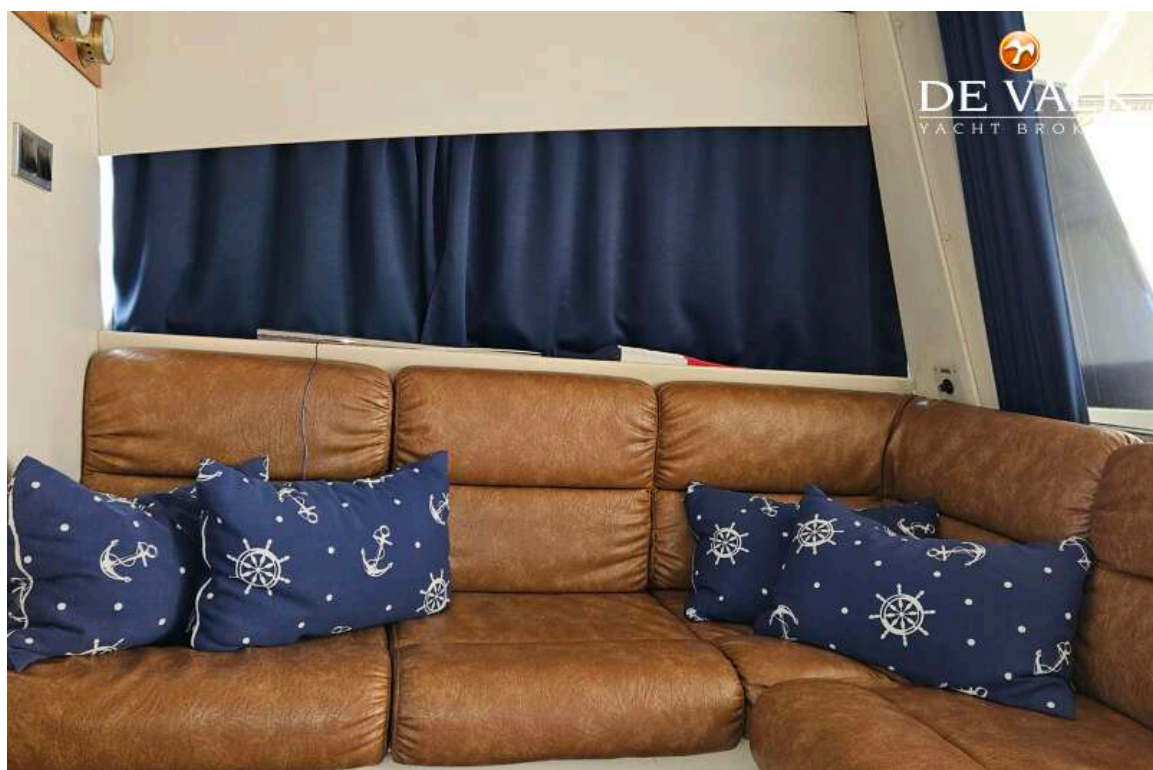
SUNSEEKER 52 CARIBBEAN



SUNSEEKER 52 CARIBBEAN



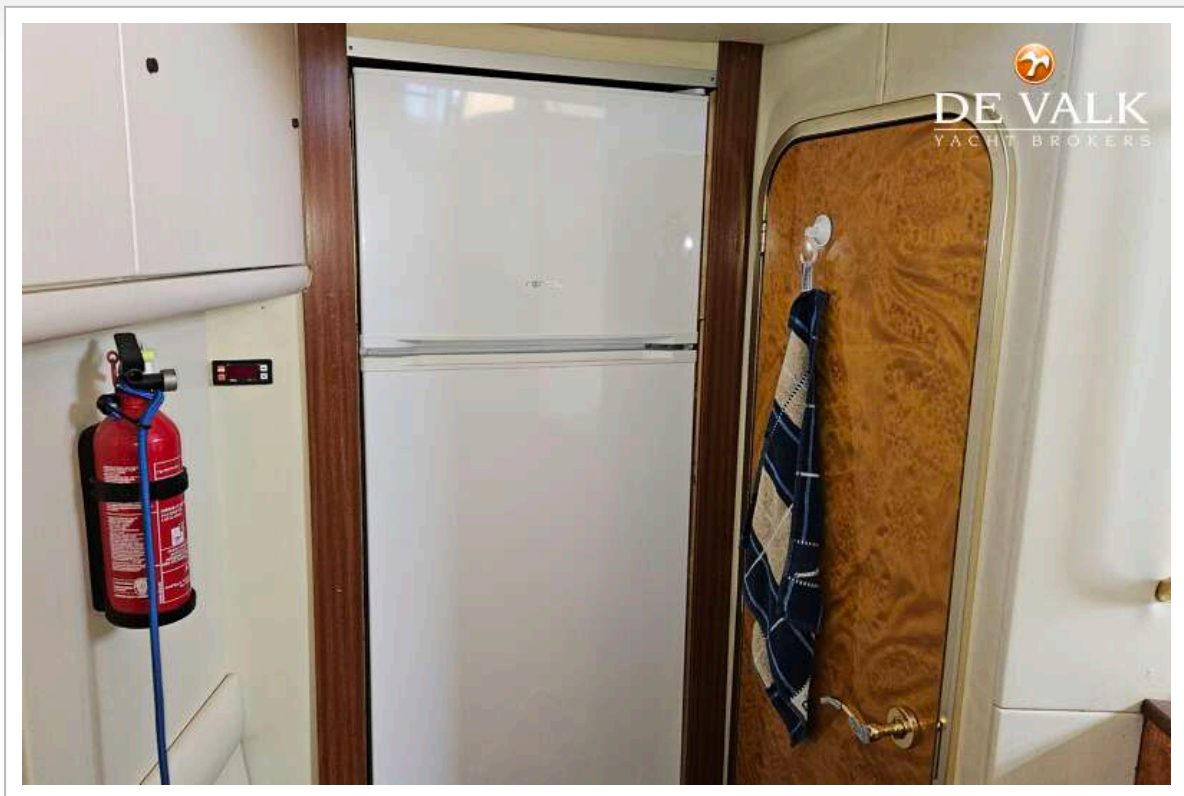
SUNSEEKER 52 CARIBBEAN



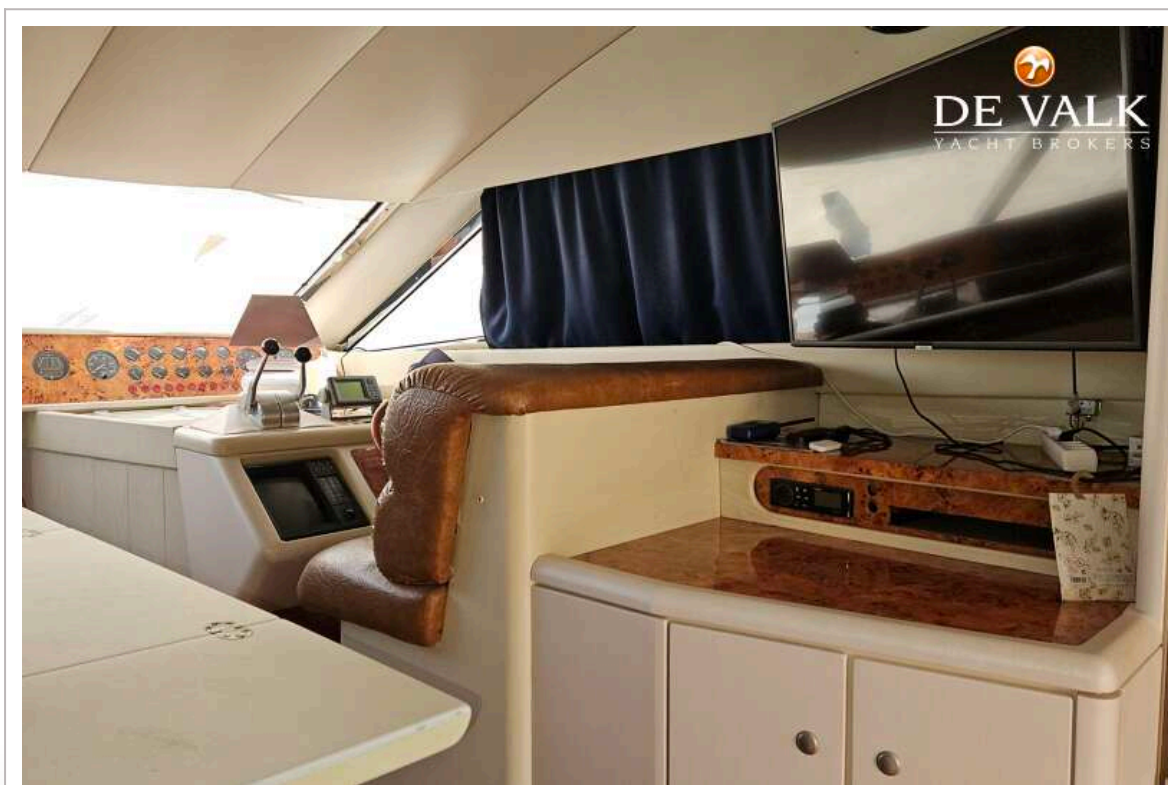
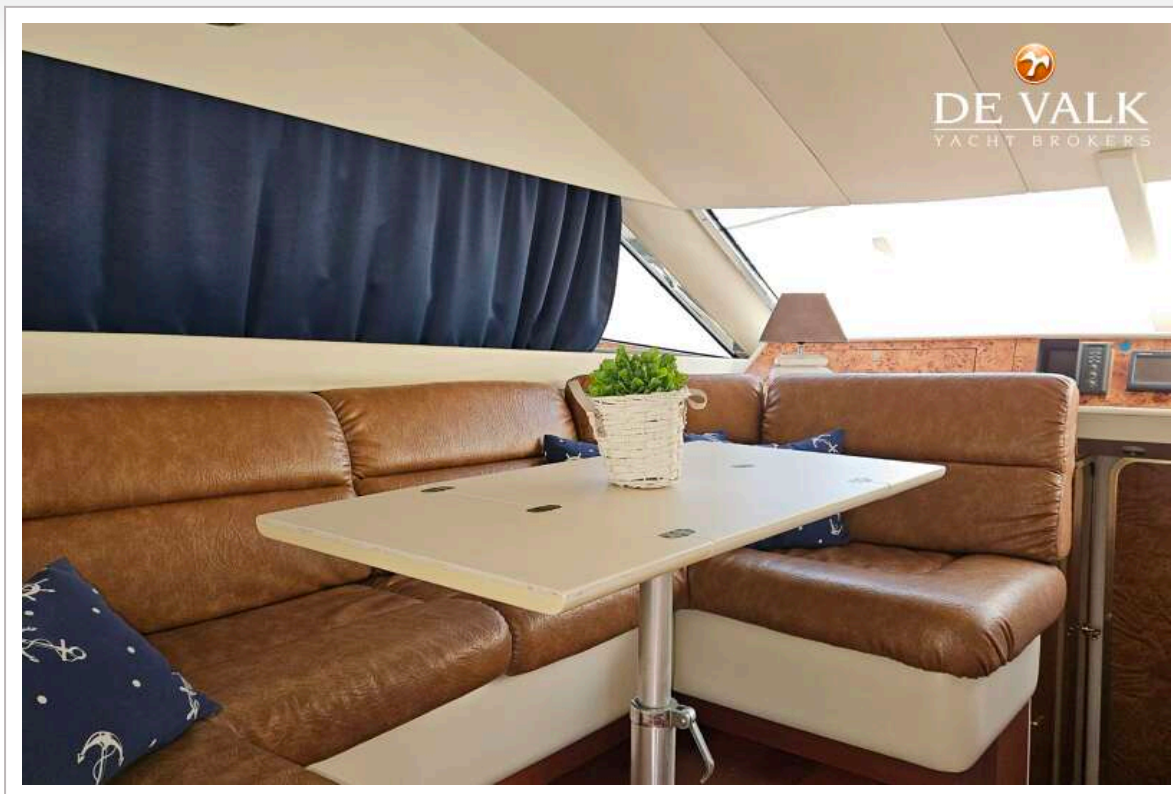
SUNSEEKER 52 CARIBBEAN



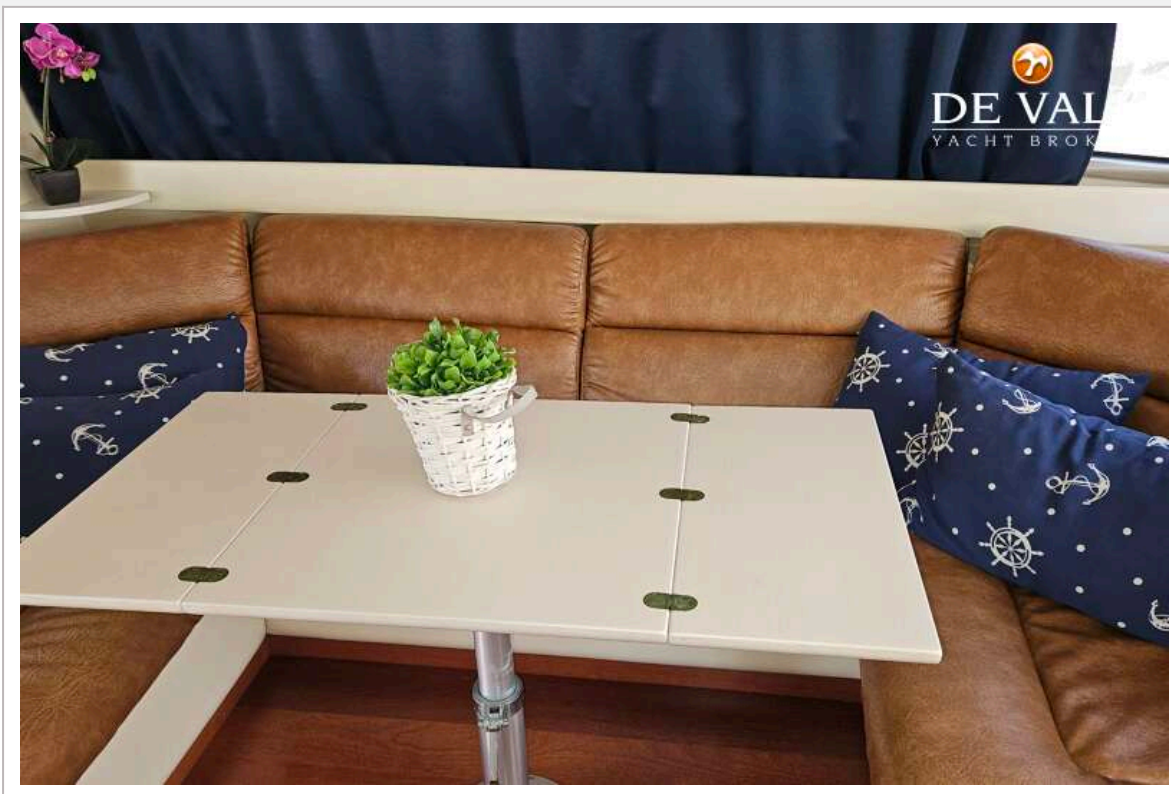
SUNSEEKER 52 CARIBBEAN



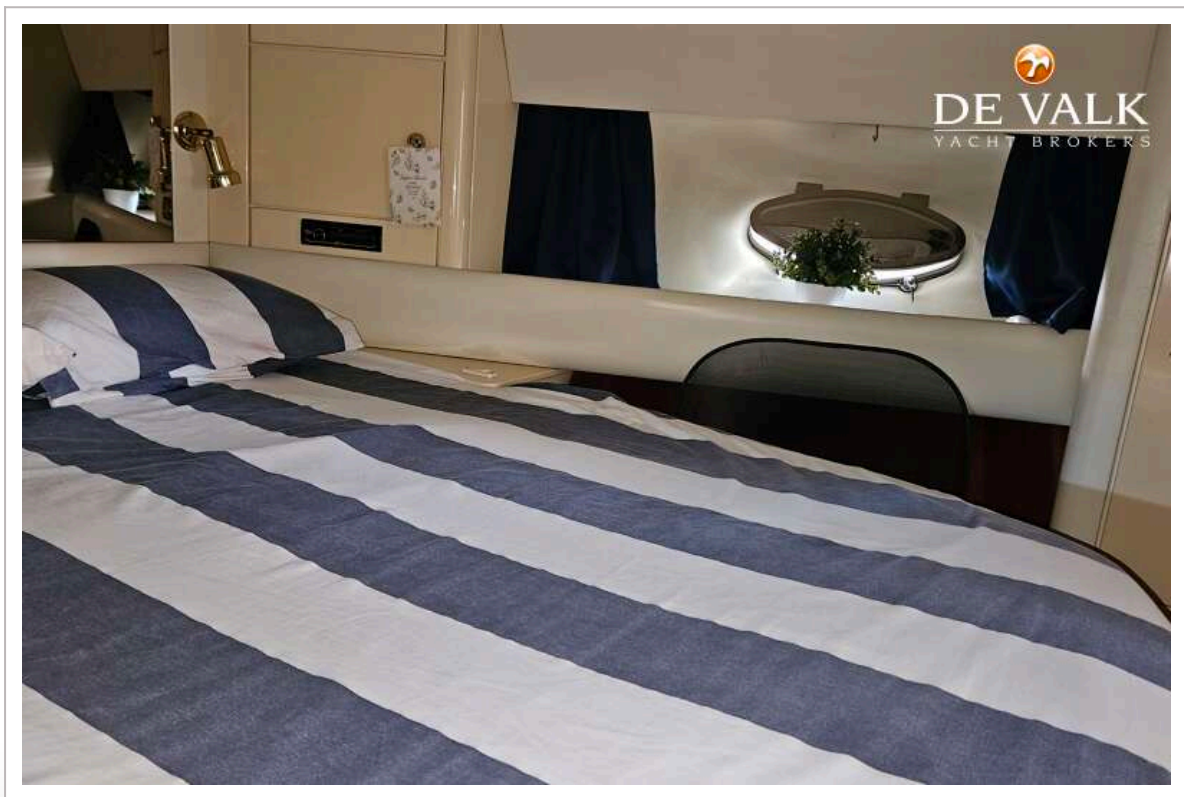
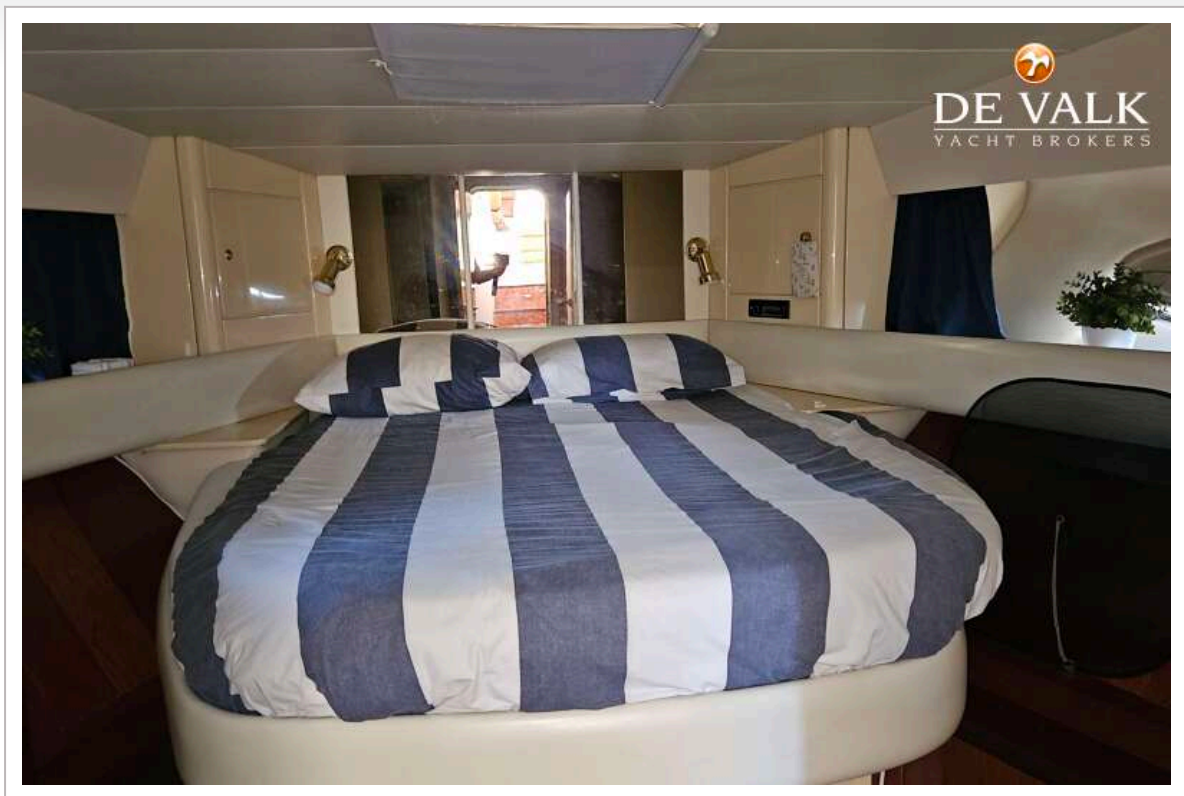
SUNSEEKER 52 CARIBBEAN



SUNSEEKER 52 CARIBBEAN



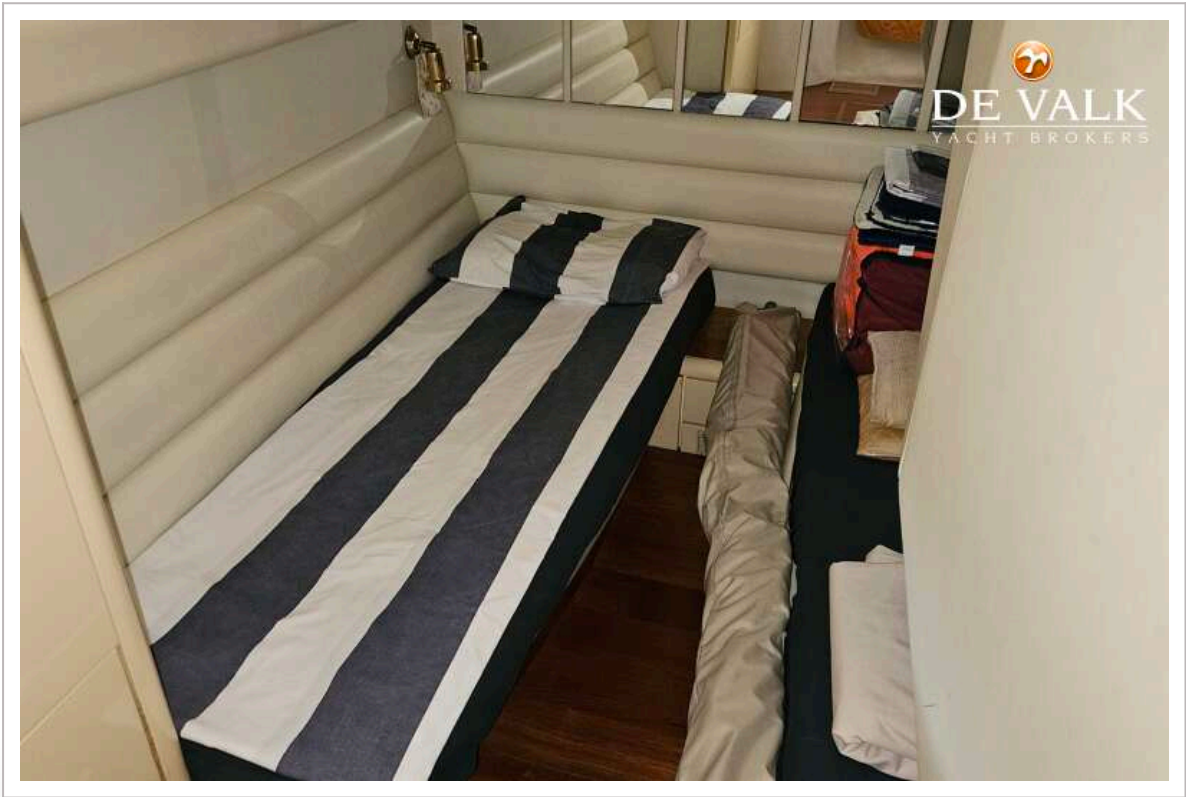
SUNSEEKER 52 CARIBBEAN



SUNSEEKER 52 CARIBBEAN



SUNSEEKER 52 CARIBBEAN



SUNSEEKER 52 CARIBBEAN

