



DE VALK  
YACHT BROKERS



## DANISH ROSE 42



DE VALK  
YACHT BROKERS

## BROKER'S COMMENTS

This very well maintained Danish Rose 42 is now for sale and is ready to sail the seven seas. The current Swedish owner has made no reservations about keeping her in her current immaculate condition. "Dalwinnie" is a very robust, comfortable, fully equipped versatile cruiser, ready to go anywhere, or just sail daily trips. She offers quality, style and comfort. The double helm and the latest navigation equipment and new sails make her very easy to handle, so singlehanded sailing is no trouble at all.

*Johan Schootstra*

## SPECIFICATIONS

<b>Dimensions</b>	14.50 x 4.10 x 2.10 (m)	<b>Builder</b>	Viveen Jachtbouw Ossenzijl
<b>Built</b>	1992	<b>Cabins</b>	2
<b>Material</b>	Steel	<b>Berths</b>	7
<b>Engine(s)</b>	1 x Yanmar 4JH80 diesel	<b>Hp/Kw</b>	80.00 (hp), 58.88 (kw)
<b>Asking price</b>	sold (VAT )	<b>Lying</b>	contact Hindeloopen

## CONTACT

<b>Sales office</b>	De Valk Hindeloopen B.V.	<b>Telephone</b>	+31 514 52 40 00
<b>Address</b>	Oosterstrand 1 8713 JS Hindeloopen NL	<b>E-mail</b>	hindeloopen@devalk.nl

## DISCLAIMER

These particulars are given in good faith as supplied but cannot be guaranteed.



## GENERAL

Model	DANISH ROSE 42
Type	sailing yacht
LOA (m)	14,50
Beam (m)	4,10
Draft (m)	2,10
Headroom (m)	2,00
Year built	1992
Launched	1997
Builder	Viveen Jachtbouw Ossenzijl
Country	The Netherlands
Designer	Martin Bekebrede
Displacement (t)	22
Ballast (tonnes)	lead   5,5 t.
Hull material	steel
Hull colour	blue
Hull shape	multi hard chine
Keel type	long keel
Superstructure material	steel
Deck material	steel
Deck finish	non-skid paint
Superstructure deck finish	teak
Cockpit deck finish	teak
Antifouling (year)	2024
Dorades	2x
Window frame	Bronze
Deckhatch	Two large opening hatches
Portholes	8 + 2
Insulation	foam   above the waterline
Radar arch	Stainless steel radarcarrier on the aft deck with antennas
Fuel tank (litre)	steel   800 ltr.



Fuel daytank (litre)	50 ltr.
Freshwater tank (litre)	stainless steel   1000 ltr.
Blackwater tank (litre)	polyethylene   150 ltr.
Blackwater tank extraction	deck extraction + pump
Wheel steering	chain steering   Solimar (dolphin 502)
Inside helm position	yes

## ACCOMMODATION

Cabins	2
Berths	7
Interior	teak   new upholstery in wheelhouse and dinette
Floor	teak and holly
Deck saloon	With 10mm safety glass
Saloon	yes
Headroom saloon (m)	Saloon: 2,05 mtr.   Deck Saloon: 2,01 mtr.
Heating	diesel ducted hot air   Webasto Thermo 90S
Heating 2	diesel ducted hot air   Refleks marine   new 2019
Navigation center	yes
Chart table	yes
Dinette	yes
Dinette to convert into berth	For two persons
Galley	yes
Sink	stainless steel   Double
Cooker	calor gas   ENO Gascogne 4 burner   new 2019
Oven	In cooker
Fridge	Dometic Coolmatic CRX-80   new 2023
Freezer	In fridge
Hot water system	220V + engine   Barco   80 ltr.
Water pressure system	electrical
Owners cabin	double bed   forward cabin
Bed length (m)	2,10 mtr.



Wardrobe	hanging and shelves
Guest cabin 1	double bed + single bed   new mattresses 2024
Bed length (m)	2 mtr.
Wardrobe	hanging and shelves
Bathroom	shared
Toilet	Jabsco Quiet flush E2/2024
Toilet system	electric
Wash basin	yes
Shower	yes

## MACHINERY

No of engines	1
Make	Yanmar
Type	4JH80
HP	80
kW	58.88
Fuel	diesel
Year installed	2023
Maximum speed (kn)	8
Cruising speed (kn)	7
Engine hours	170
Engine cooling system	freshwater heat exchanger
Drive	shaft
Engine controls	bowden cable
Gearbox	mechanical   ZF 30M 2,69:1   new 2023
Bowthruster	electric   Vetus - 3 blade
Exhaust	watercooled
Propeller type	fixed
Propeller blades	3
Propeller shaft material	stainless steel
Shaft lubrication	grease



Manual bilge pump	Whale Gusher
Electric bilge pump	Jabsco
Electrical installation	Multiple electrical systems: 12V, 24V and 220V possible.
Start battery	Varta 110 Ah   new 2020
Service battery	6x AMG - 134 Ah   new 2020
Inverter	Mastervolt 12V-24V - 4000W
Battery charger/inverter	Victron 24/3000
Shorepower	with cable   Mastervolt 220V AC control panel

## NAVIGATION

Compass	Vetus
Multi control display	Raymarine Multiview I70
Depth sounder	Autohelm ST80
Log	Autohelm ST80
Windset	Raymarine I60
VHF	ICOM M505   Shipmate RS8300
Autopilot	Raymarine EV200 sail   new 2023
Wind vane steering install.	Windpilot Pacific Plus II with own rudder
Radar	Raymarine Quantum2 - 2022
Radar/GPS/plotter	Raymarine Axion Pro 12"   new 2021
Navtex	Navtex ICS4
Electronic chart(s)	Electronic seacharts CM93
Navigation lights	All lights are LED, except stern and steaming light.
Searchlight	ITT Jabsco (62042-4006), 24V

## EQUIPMENT

Winter cover	yes
Boarding ladder	stainless steel   Fixed staircase to starboard hull
Anchor	Bruce   20 kg
Anchor chain	90 meter chain - 10 mm stainless steel   new 2022
Anchor 2	Fortress   FX-37



Anchor chain	50 meter lead line
Windlass	electrical   Lowfrans 1500 Watt
Outboard support	yes
Sea railing	yes
Grab rail (superstructure)	stainless steel
Railing side opening gates	Both sides
Pushpit	yes
Pulpit	yes
Lifejackets	2x Secumar
Lifebuoy	New 2024
Safety lines on deck	On deck and 3 points in cockpit
Fenders	6 + 2
Mooring lines	4 mooring ropes (20 m) and reserve ones incl. other ropes.
Spare parts	Various
Radio	Fusion MS-RA70
Speakers in salon	2x
Fire extinguisher	2x foam & fire blanket in galley

## RIGGING

Rigging	sloop-cutter
Standing rigging	Dyform   6-8 mm
Brand mast	Brasker
Material mast	aluminium coated   off white
Spreaders	2 pair
Mainsail	Elvstrøm   new 2023
Stoway mast	yes
Genoa	Beilken   new 2022
Genoa furler	Bamar
Gennaker	yes
Staysail	Hydranet
Staysail furler	yes

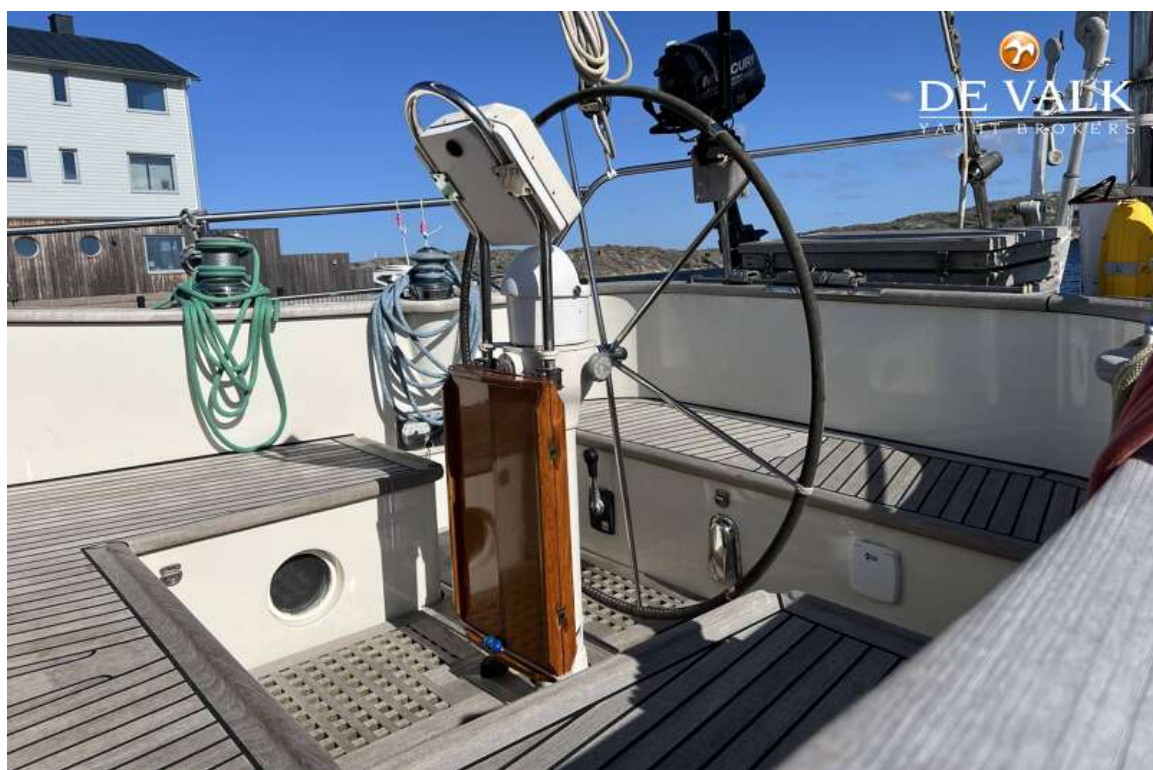


<b>Stormjib</b>	Little used
<b>Backstay adjuster</b>	hydraulic
<b>Primary sheet winch</b>	2x Lewmar 40   two speed selftailing
<b>Genoa sheetwinches</b>	2x Lewmar 50   two speed selftailing
<b>Halyard winches</b>	2x Lewmar 30   two speed selftailing
<b>Spi-pole</b>	aluminium   Bamar - attached to the mast
<b>Isolated backstay</b>	yes

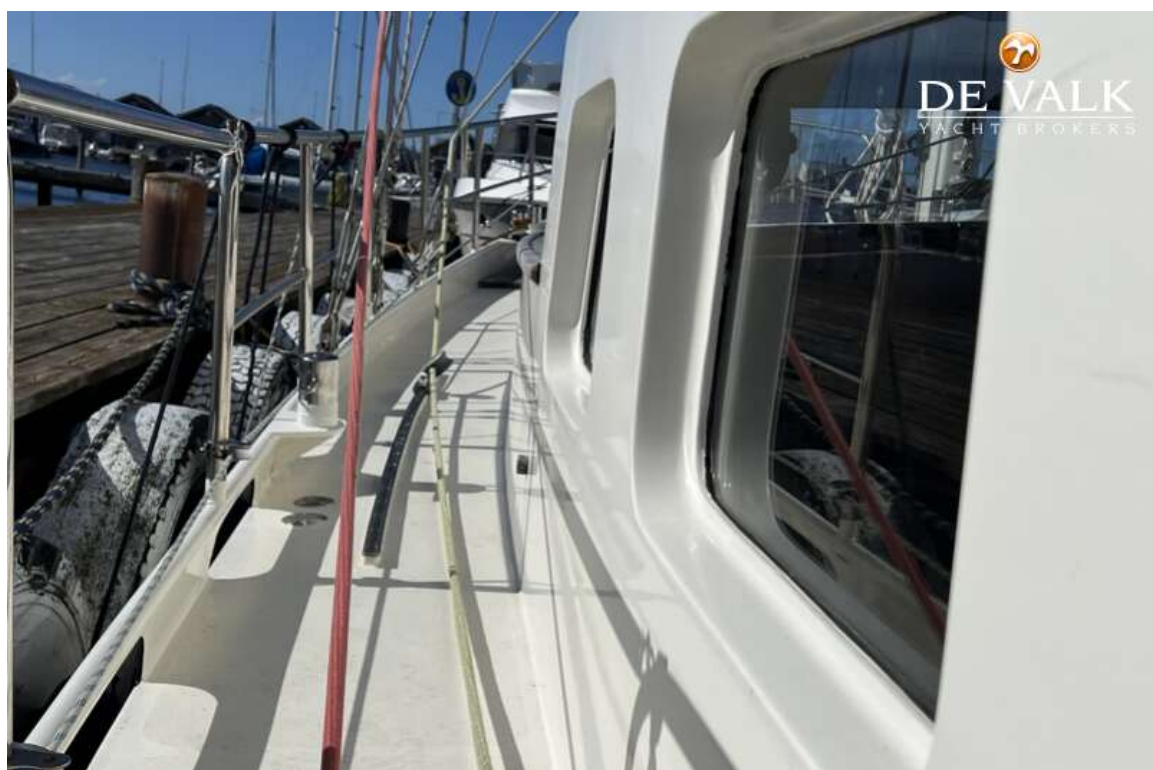




## DANISH ROSE 42

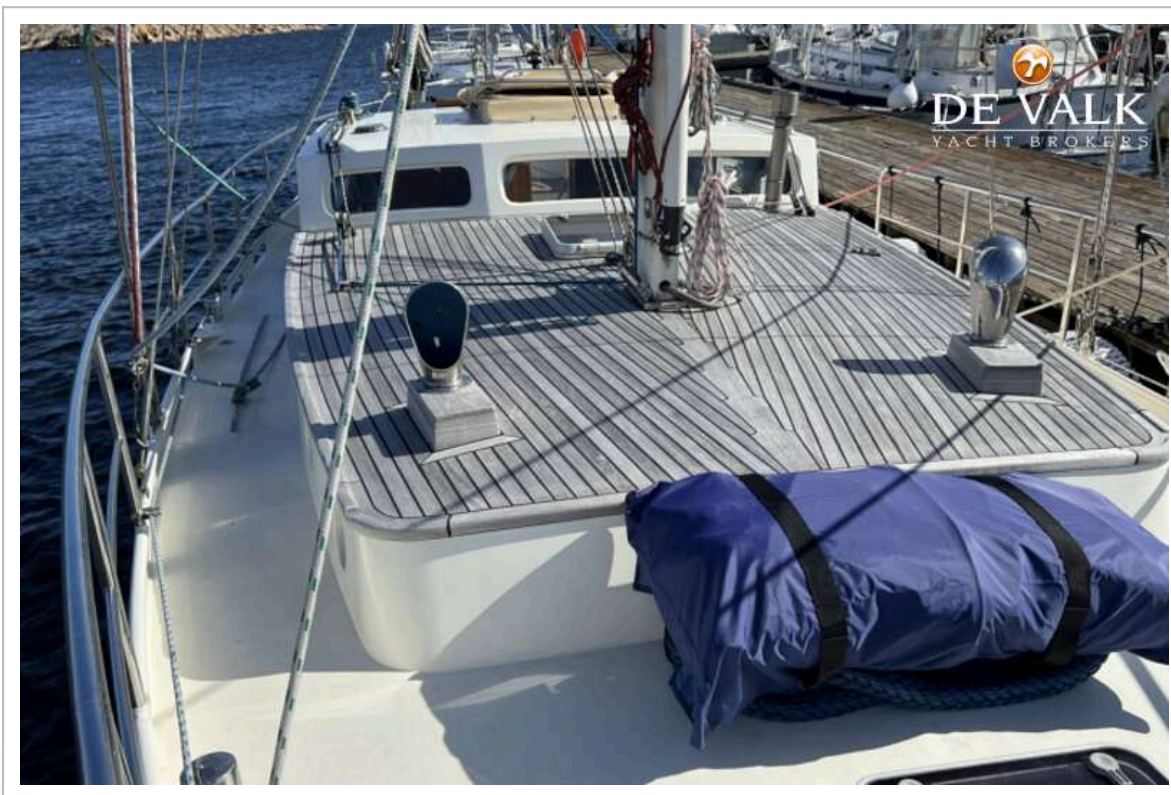
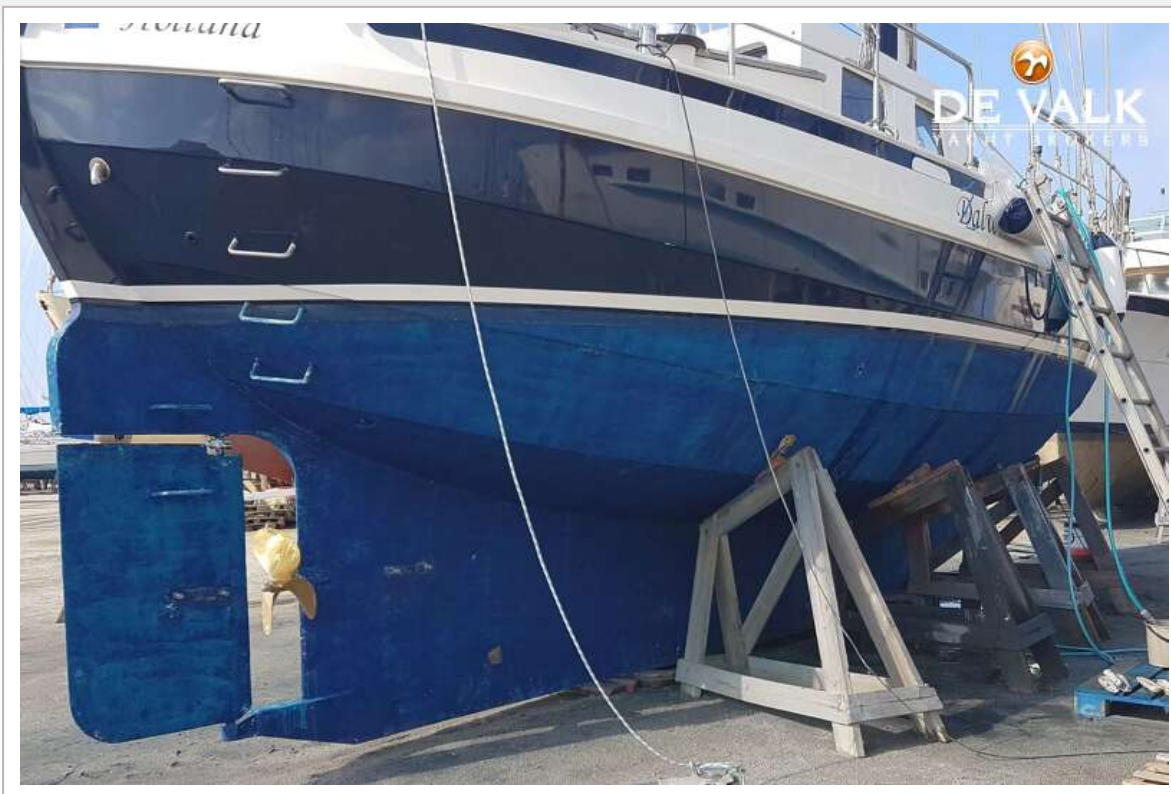


## DANISH ROSE 42



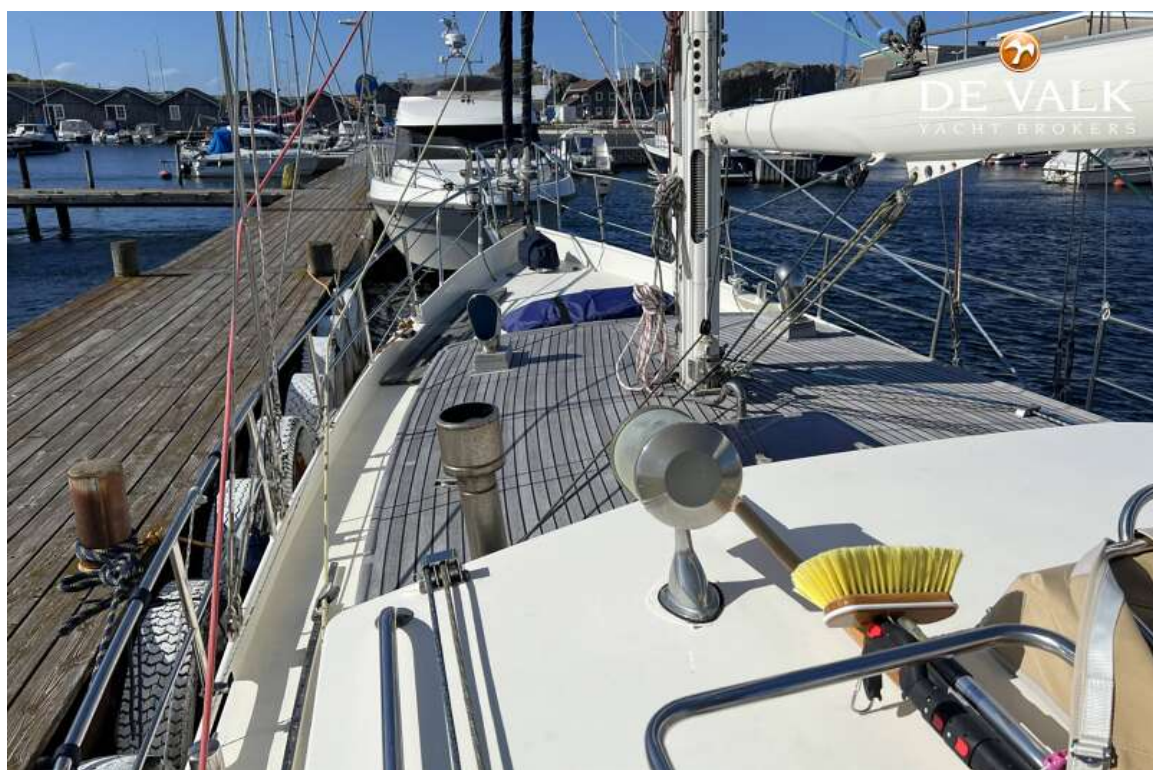


## DANISH ROSE 42





## DANISH ROSE 42





## DANISH ROSE 42

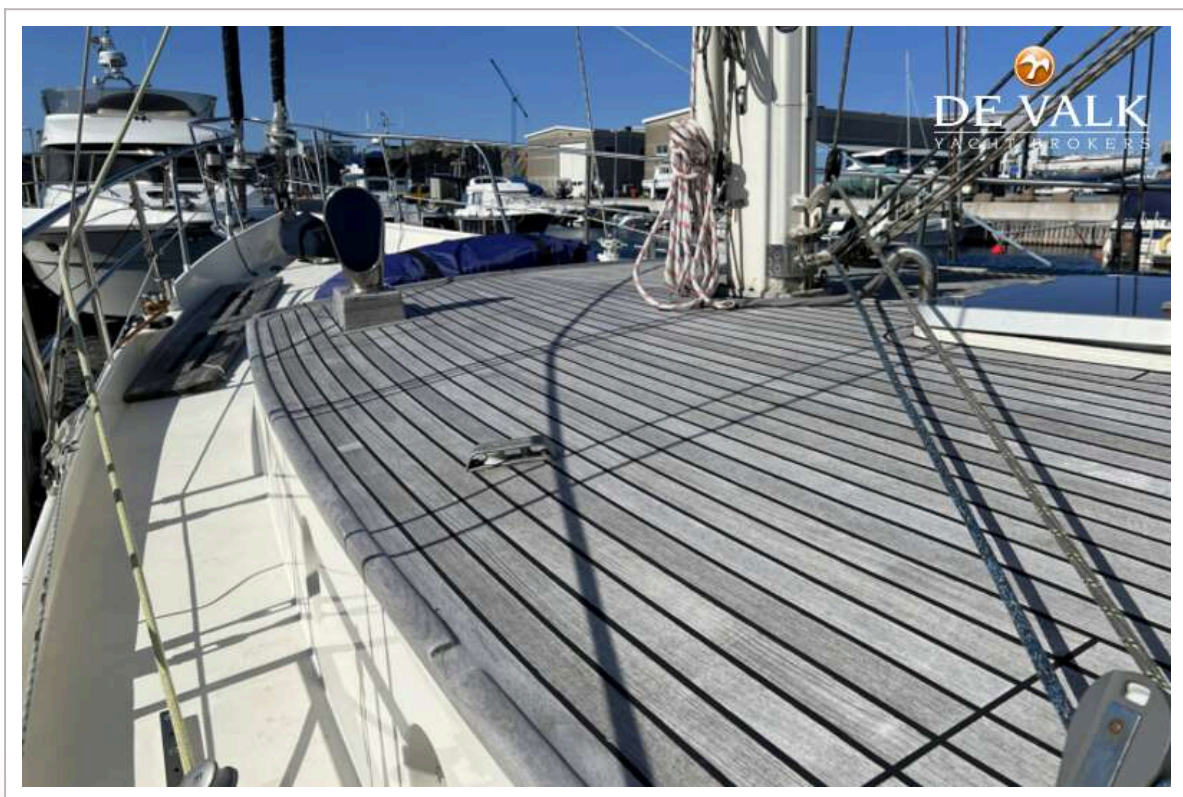
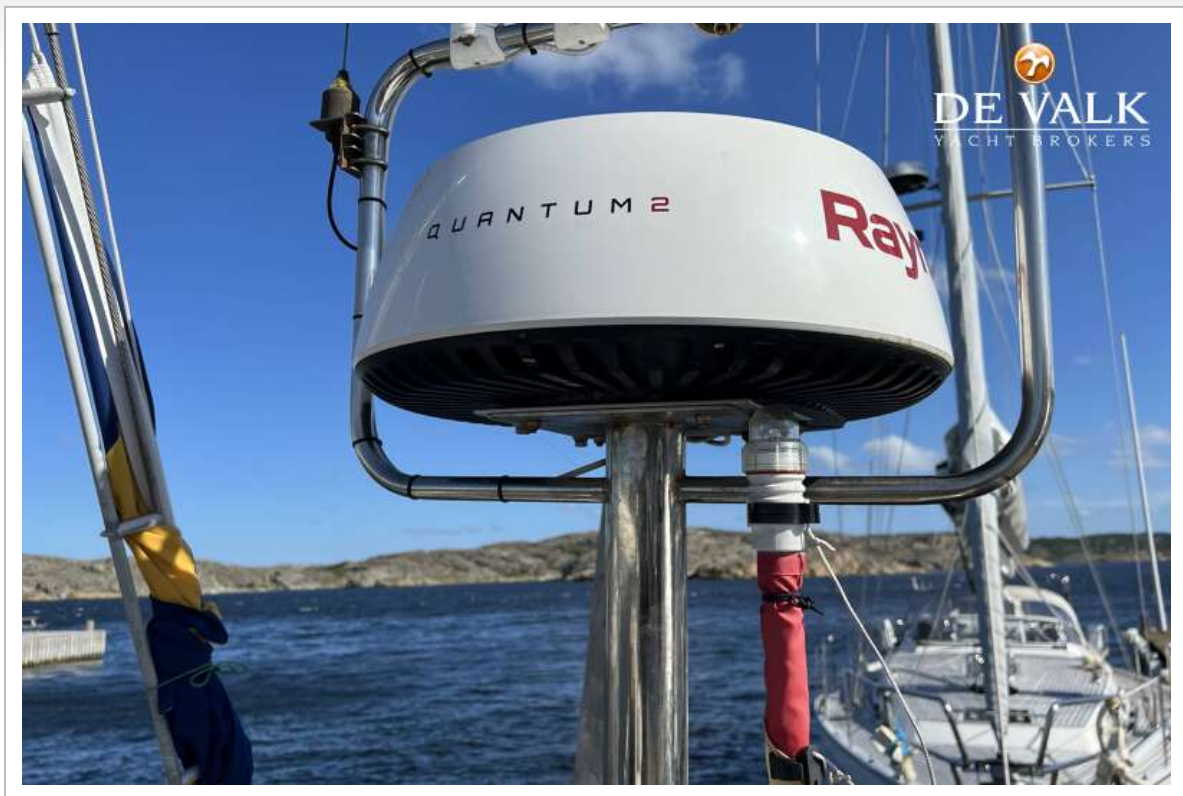




## DANISH ROSE 42

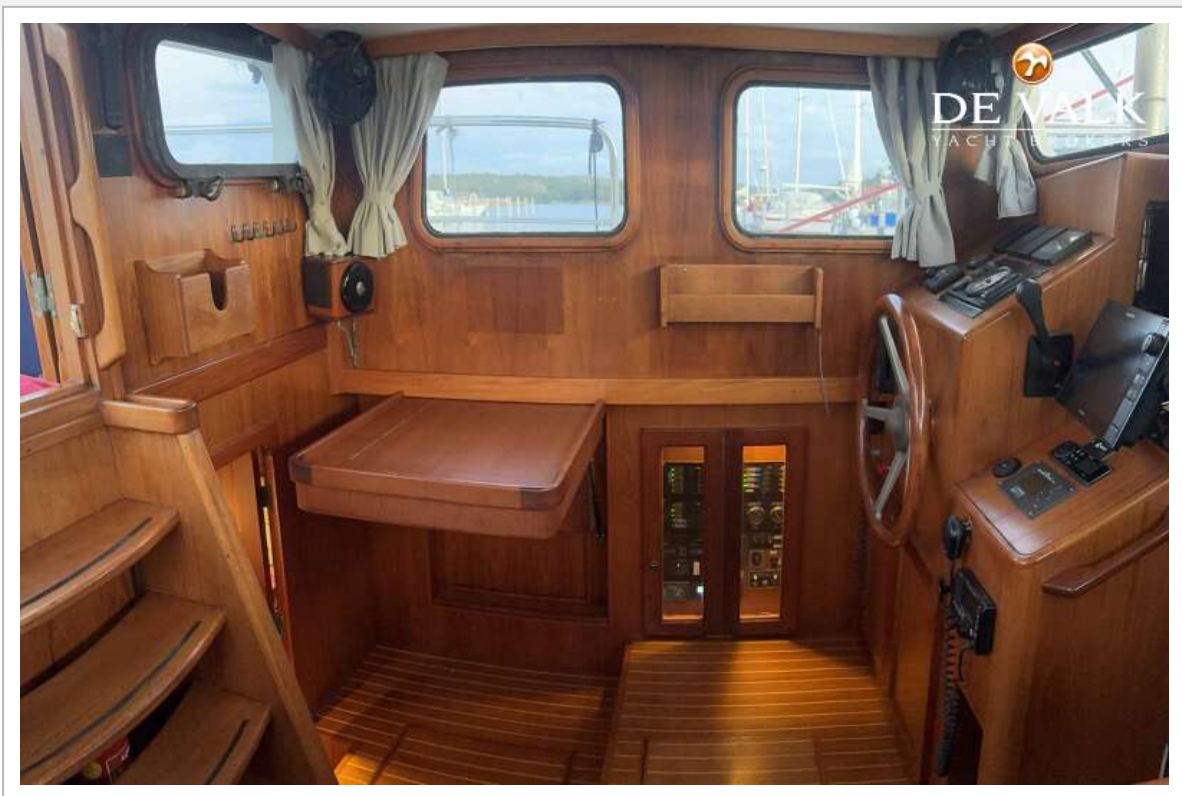


## DANISH ROSE 42



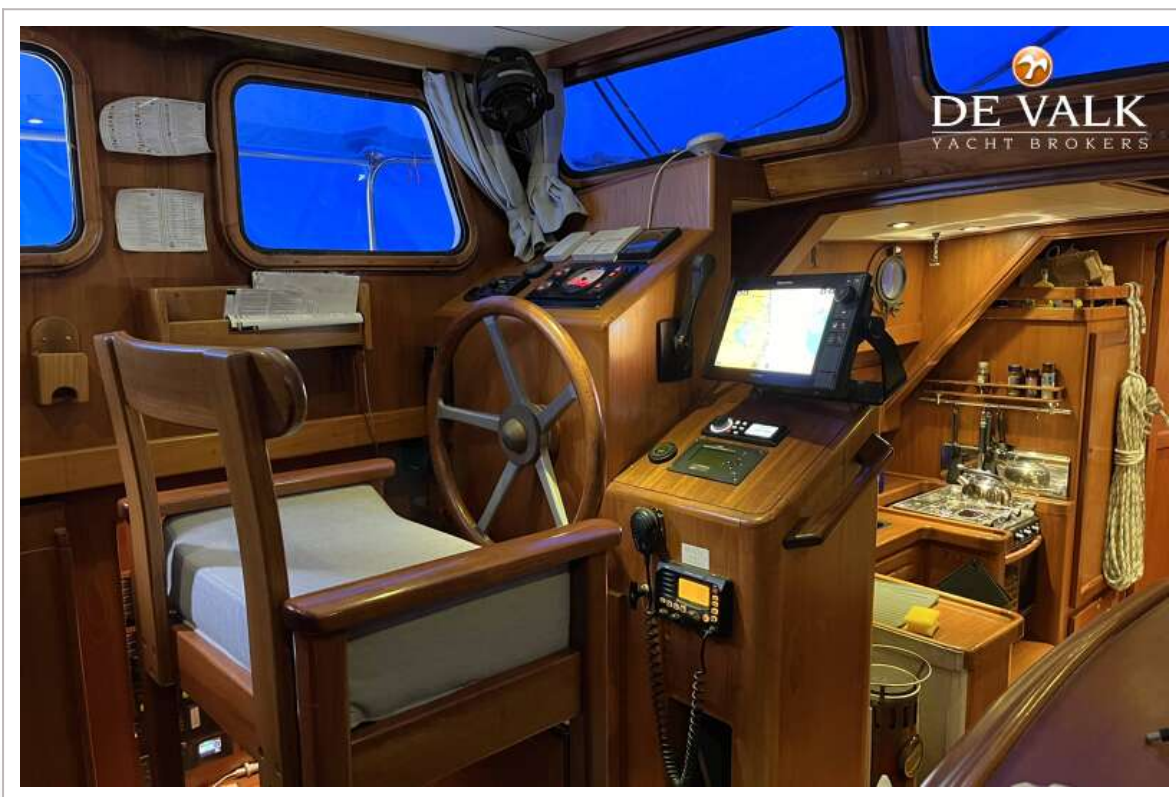


## DANISH ROSE 42





# DANISH ROSE 42

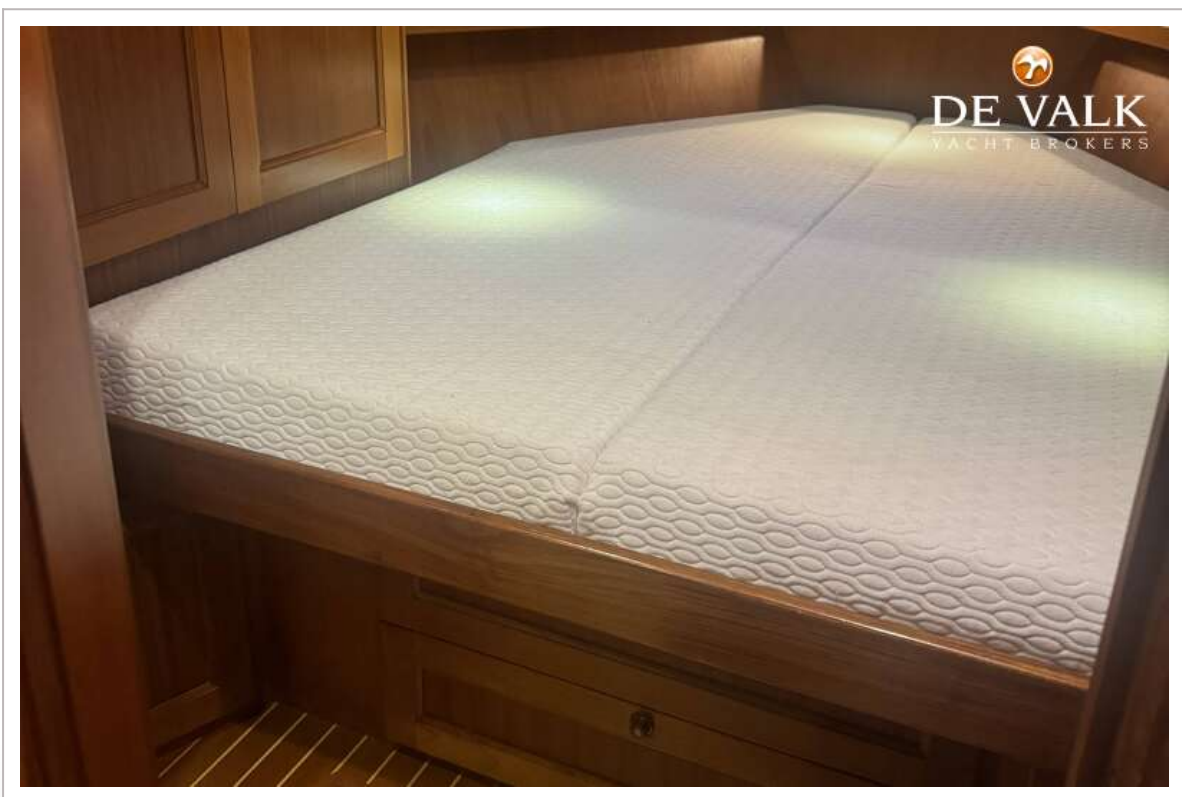


## DANISH ROSE 42





## DANISH ROSE 42



## DANISH ROSE 42





## DANISH ROSE 42



## DANISH ROSE 42

