



## ATLANTIC 444



# ATLANTIC 444

## BROKER'S COMMENTS

Atlantic 444, a great motor yacht, equipped with two Volvo Penta 370 hp diesel engines. Let this 444 take you to the most beautiful locations in Europe. . . given its low headroom, a trip through France is certainly also a possibility. If you are looking for a 14m+, 2 cabin, polyester, fast sailing motor yacht, your first ' stop' will be De Valk Jachtmakelaars Sneek. The Atlantic 444 is in our covered sales marina . . where you are welcome 7 days a week

*Henk de Vries*

## SPECIFICATIONS

<b>Dimensions</b>	14.15 x 4.50 x 1.22 (m)	<b>Builder</b>	Holland Boat Workum
<b>Built</b>	1999	<b>Cabins</b>	2
<b>Material</b>	GRP	<b>Berths</b>	4
<b>Engine(s)</b>	2 x Volvo Penta TAMD63-A diesel	<b>Hp/Kw</b>	2 x 370.00 (hp), 272.32 (kw)
<b>Asking price</b>	sold (VAT )	<b>Lying</b>	

## CONTACT

<b>Sales office</b>	De Valk Sneek	<b>Telephone</b>	+31 (0)515 42 80 30
<b>Address</b>	Zwolsmanweg 7 8606 KC Sneek NL	<b>E-mail</b>	sneek@devalk.nl

## DISCLAIMER

These particulars are given in good faith as supplied but cannot be guaranteed.



# ATLANTIC 444

## GENERAL

Model	ATLANTIC 444
Type	motor yacht
LOA (m)	14,15
Beam (m)	4,50
Draft (m)	1,22
Air draft (m)	3,40
Headroom (m)	2,00
Year built	1999
Builder	Holland Boat Workum
Country	The Netherlands
Designer	John Bennet
Displacement (t)	18
CE norm	B
Hull material	GRP
Hull colour	white
Hull shape	V-shaped hull
Superstructure material	GRP
Rubbing strake	stainless steel
Deck material	GRP
Deck finish	teak
Cockpit deck finish	teak
Dorades	yes
Window frame	stainless steel
Window material	glass
Deckhatch	yes
Portholes	yes
Insulation	yes
Radar arch	collapsible
Fuel tank (litre)	steel 900
Fuel tank 2 (litre)	steel 900



Level indicator (fuel tank)	yes
Freshwater tank (litre)	700
Level indicator (freshwater)	yes
Blackwater tank (litre)	300
Level indicator (blackwater)	yes
Blackwater tank extraction	deck extraction
Wheel steering	hydraulic
Outside helm position	hydraulic

## ACCOMMODATION

Cabins	2
Berths	4
Interior	pearwood
Floor	wood
Aft deck	yes
Saloon	yes
Headroom saloon (m)	2,0
Heating	diesel ducted hot air Eberspacher
Heating 2	diesel ducted hot air Eberspacher
Air-conditioning	single cycle airco In ownerscabin Marincold (needs service)
Aft Cabin	yes
Dining room	yes
Dinette	yes
Opening door to aft deck	yes
Galley	yes
Countertop	Duropol
Sink	stainless steel 2x
Cooker	induction 4-pits Samsung
Microwave/oven combi	Siemens Top Line
Fridge	2x Coolmatic 80ltr & 110ltr-
Freezer	In the fridge 2x



# ATLANTIC 444

Hot water system	220V + engine
Water pressure system	electrical
Dishwasher	Siemens
Owners cabin	French bed
Bed length (m)	2,0
Wardrobe	hanging/drawers/shelves
Bathroom	en suite
Toilet	en suite
Toilet system	electric
Wash basin	in the bathroom
Shower	en suite
Guest cabin 1	v-bed
Bed length (m)	2,0
Wardrobe	hanging and drawers
Bathroom	en suite
Toilet	en suite
Toilet system	electric
Wash basin	in the bathroom
Shower	en suite

## MACHINERY

No of engines	2
Make	Volvo Penta
Type	TAMD63-A
HP	370
kW	272.32
Fuel	diesel
Year installed	1999
Maximum speed (kn)	22
Cruising speed (kn)	18
Engine hours	4000



Engine cooling system	freshwater heat exchanger
Drive	shaft
Shaft seal	yes
Engine controls	bowden cable
Gearbox	ZF-MPM IRM 220 A1
Bowthruster	electric Vetus 160 Kgf
Sternthruster	electric Vetus 160 Kgf
Thrust bearing	yes
Propeller type	fixed 23" x 29"
Propeller blades	4
Propeller shaft material	stainless steel 55 mm
Shaft lubrication	water
Manual bilge pump	yes
Electric bilge pump	yes
Electrical installation	12V /24V /220V
Generator	Out of order
Batteries	yes
Start battery	yes
Service battery	yes
Bowthruster battery	yes
Sternthruster battery	yes
Windlass battery	yes
Battery monitor	yes
Battery charger/inverter	yes
Shorepower	with cable

## NAVIGATION

Compass	yes
Electric compass	Autohelm Compas
Depth sounder	Autohelm Depth
Log	Autohelm Speed



Windset	Autohelm Wind
VHF handheld	yes
Autopilot	Autohelm ST7000
Rudder angle indicator	Autohelm Rudder
Radar	Raytheon R41XX
GPS	Autohelm GPS
Plotter	Autohelm Navcenter 600
Navigation lights	yes
Searchlight	Vetus with remote control
Loudhailer	Raytheon Ray430

## EQUIPMENT

Fixed windscreen	yes
Sprayhood	yes
Dodger	yes
Bimini	yes
Cockpit cushions	yes
Cockpit table	yes
Bathing platform	yes
Boarding ladder	stainless steel
Transom door	yes
Bow ladder	yes
Gangway	Needs service
Anchor	yes
Anchor chain	yes
Windlass	electrical Lofrans
Deck wash	yes
Davits	stainless steel
Davits controls	electrical Needs service
Sea railing	stainless steel
Grab rail (superstructure)	stainless steel



Railing side opening gates	yes
Wiper	3x
Window ventilator	yes
Horn	electric
Fenders	yes
Mooring lines	yes
Radio-cd player	2x Pioneer & Philips
Cockpit speakers	2x Sony
Speakers in salon	2x Sony
Speakers in cabin	2x Sony
Clock - barometer	Royal Mariner





# ATLANTIC 444



# ATLANTIC 444



# ATLANTIC 444

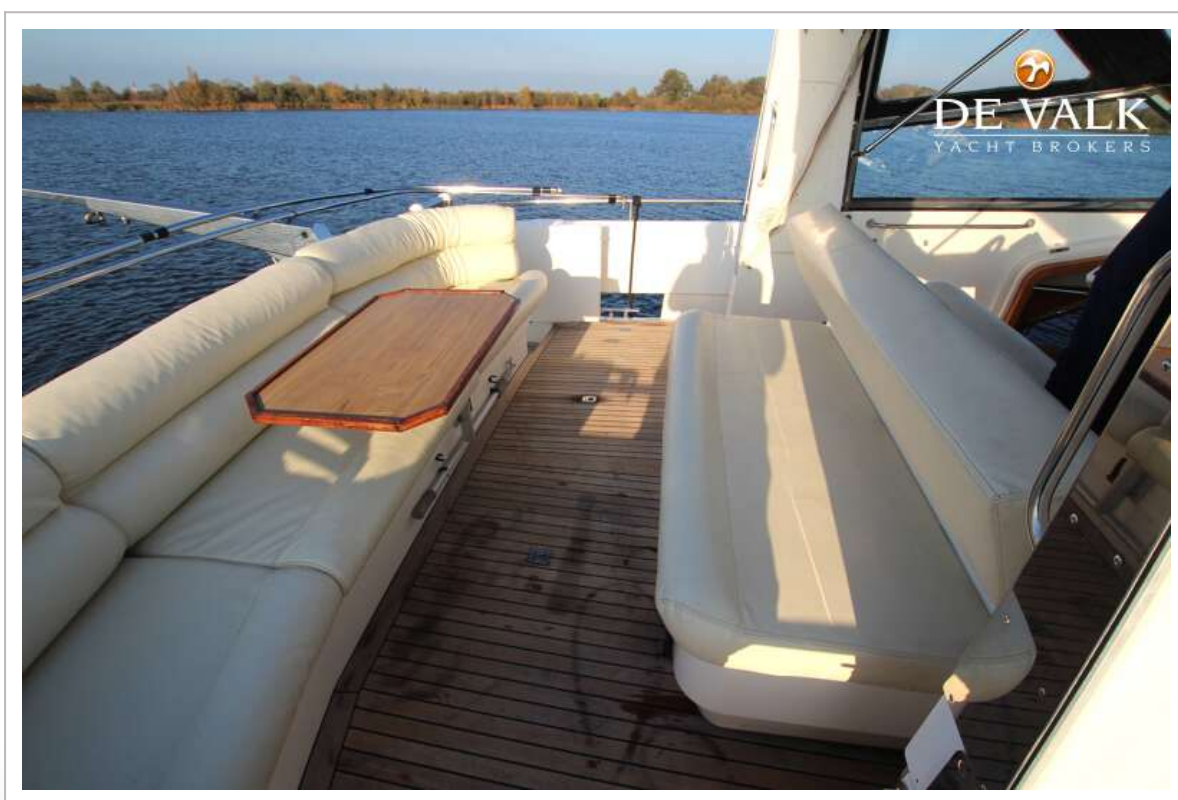




# ATLANTIC 444



# ATLANTIC 444





# ATLANTIC 444

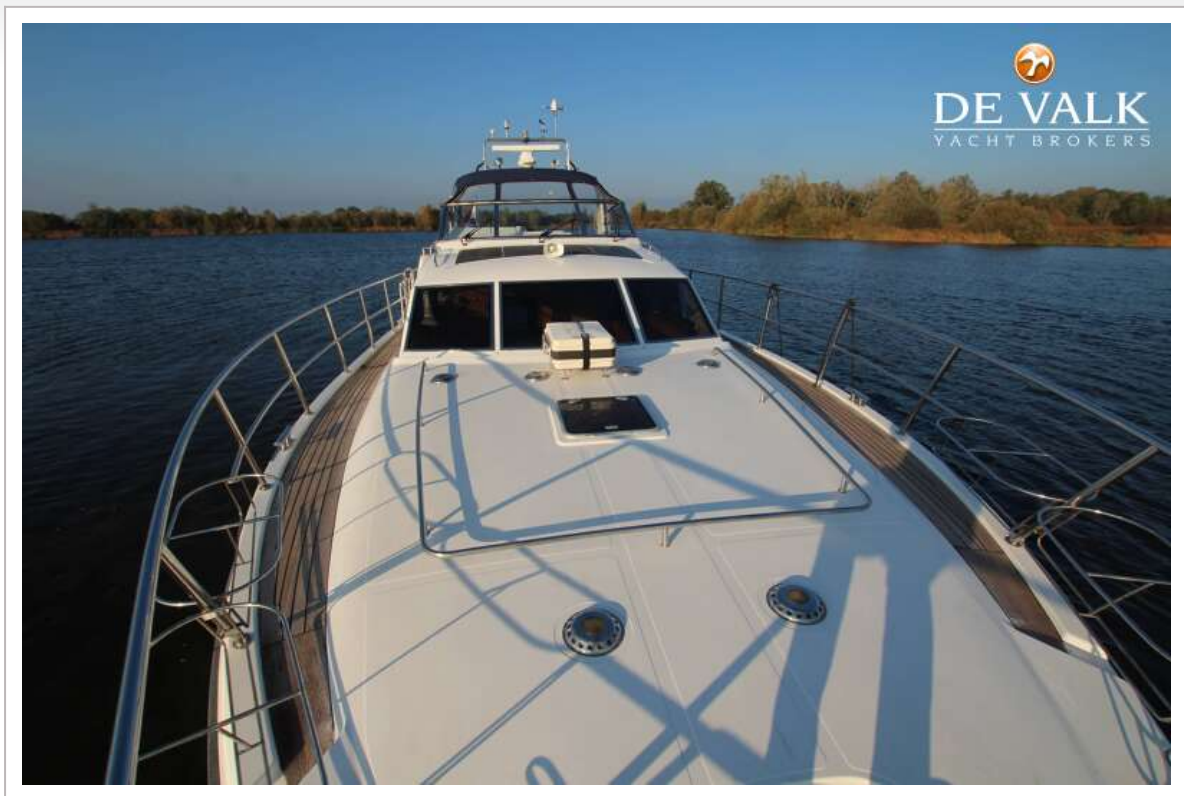


# ATLANTIC 444



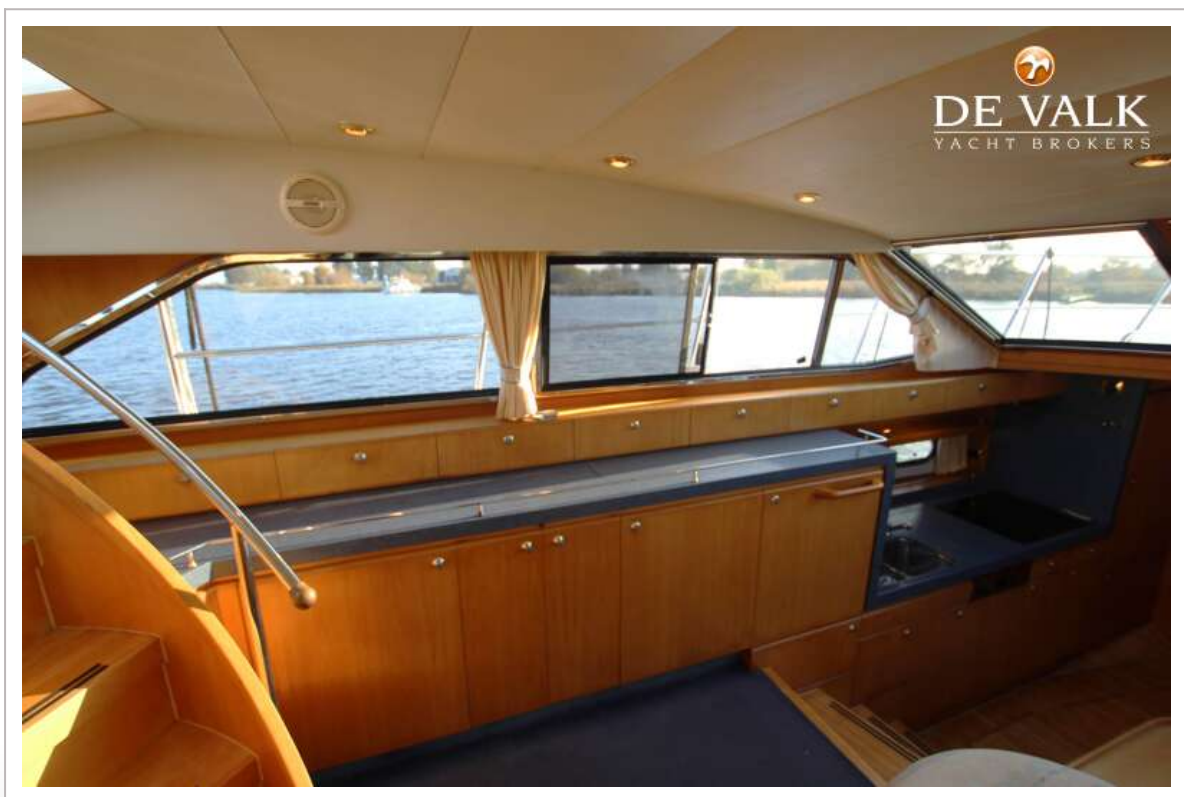


# ATLANTIC 444





# ATLANTIC 444



# ATLANTIC 444





# ATLANTIC 444



# ATLANTIC 444

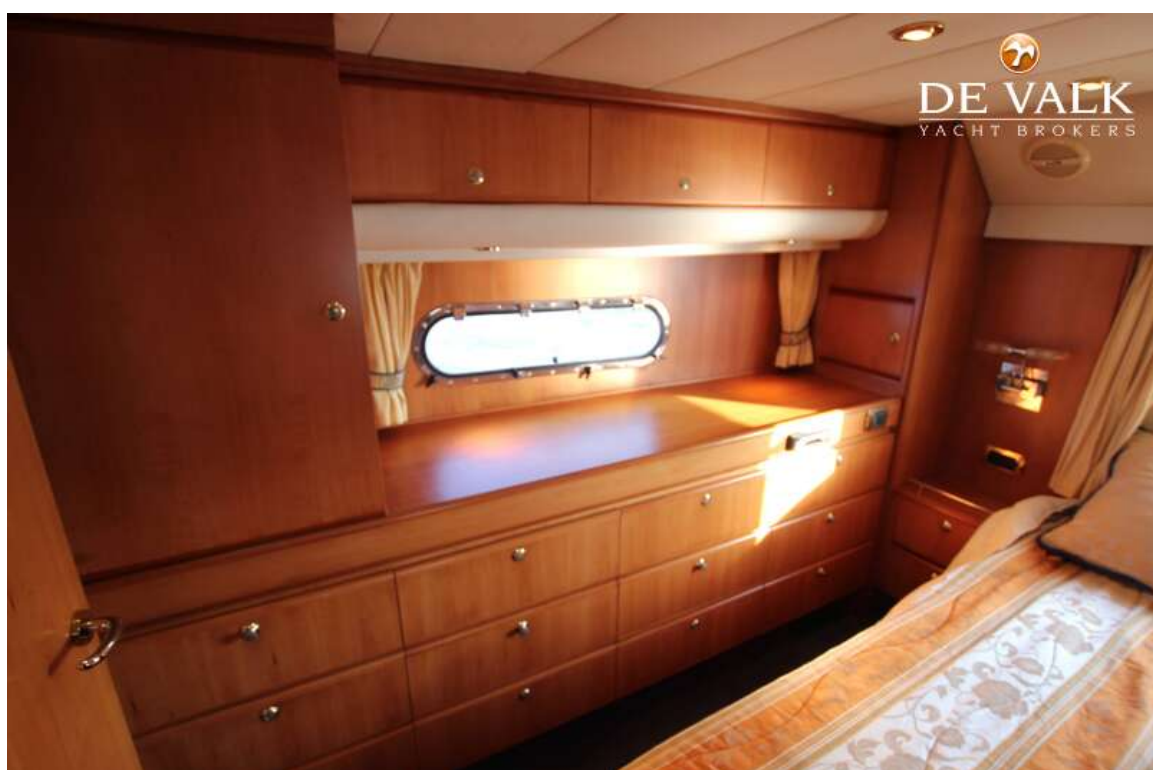
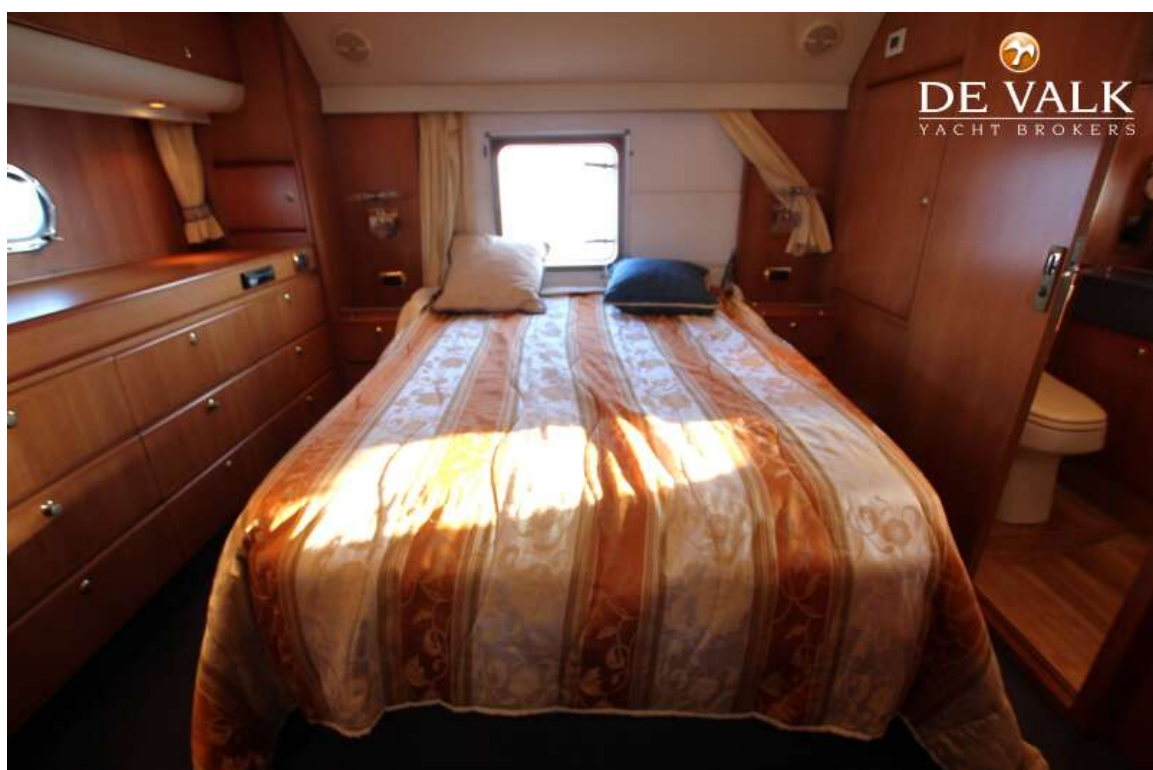


# ATLANTIC 444





# ATLANTIC 444



# ATLANTIC 444

