



DE VALK  
YACHT BROKERS



RO/PAX DOUBLE ENDED FERRY 107 M



DE VALK  
YACHT BROKERS

# RO/PAX DOUBLE ENDED FERRY 107 M

## BROKER'S COMMENTS

Double ended RO-PAX open type Ferry Built 2017 under INSB. Powered by 4 x Caterpillar main engines with total 4000hp. 4 x auxiliary gensets. Four rudder propeller VETH system. Oil-water separator. 13.5 knots service speed. 140 European type cars on main deck OR 24 trucks of 12m - and 44 cars on lower deck. Height of main garage is 4.95m. Total cars capacity 182 and passengers 800. Passengers elevator from garage to saloon. Air-conditioned throughout.

*Sofia Iliia-Salvanou*

## SPECIFICATIONS

|                     |  |                |                                  |
|---------------------|--|----------------|----------------------------------|
| <b>Dimensions</b>   | 107.00 x 18.08 x 2.65 (m)              | <b>Builder</b> | BEKRIS SHIPYARD, PERAMA,         |
| <b>Built</b>        | 2017                                   | <b>Cabins</b>  |                                  |
| <b>Material</b>     | Steel                                  | <b>Berths</b>  |                                  |
| <b>Engine(s)</b>    | 4 x CATERPILLAR C32 ACER MARINE diesel | <b>Hp/Kw</b>   | 4 x 4,000.00 (hp), 2,944.00 (kw) |
| <b>Asking price</b> | € 8.816.000 (VAT Not paid)             | <b>Lying</b>   |                                  |

## CONTACT

|                     |   |                  |                  |
|---------------------|---|------------------|------------------|
| <b>Sales office</b> | De Valk Corfu   | <b>Telephone</b> | (+30) 6948681503 |
| <b>Address</b>      | New Port of Corfu, near Gouvia Marina<br>490 83 Corfu<br>GR | <b>E-mail</b>    | corfu@devalk.nl  |

## DISCLAIMER

These particulars are given in good faith as supplied but cannot be guaranteed.



# RO/PAX DOUBLE ENDED FERRY 107 M

## GENERAL

|                      |                                 |
|----------------------|---------------------------------|
| <b>Model</b>         | RO/PAX DOUBLE ENDED FERRY 107 M |
| <b>Type</b>          | motor yacht                     |
| <b>LOA (m)</b>       | 107,00                          |
| <b>Beam (m)</b>      | 18,08                           |
| <b>Draft (m)</b>     | 2,65                            |
| <b>Year built</b>    | 2017                            |
| <b>Builder</b>       | BEKRIS SHIPYARD, PERAMA,        |
| <b>Country</b>       | Greece                          |
| <b>Designer</b>      | PETYCHAKI                       |
| <b>Hull material</b> | steel                           |

## MACHINERY

|                            |                 |
|----------------------------|-----------------|
| <b>No of engines</b>       | 4               |
| <b>Make</b>                | CATERPILLAR     |
| <b>Type</b>                | C32 ACER MARINE |
| <b>HP</b>                  | 4000            |
| <b>kW</b>                  | 2944            |
| <b>Fuel</b>                | diesel          |
| <b>Year installed</b>      | 2016            |
| <b>Maximum speed (kn)</b>  | 15,2            |
| <b>Cruising speed (kn)</b> | 13,5            |



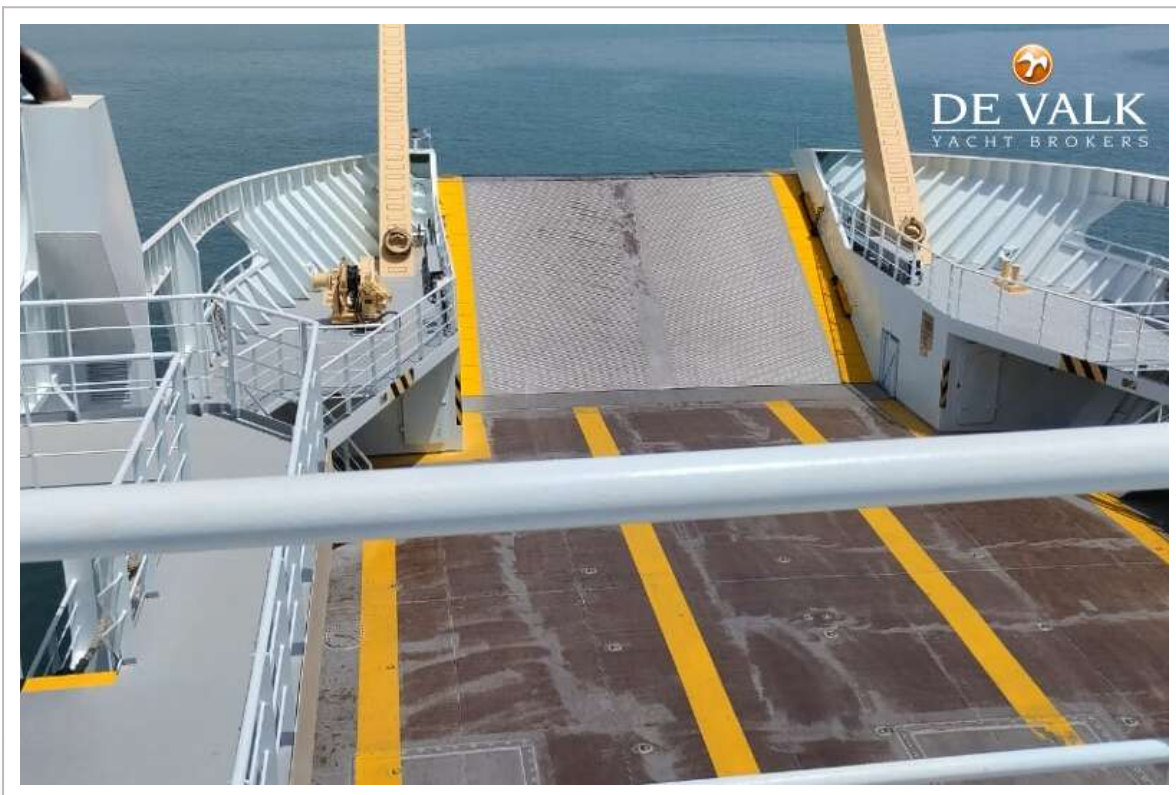
# RO/PAX DOUBLE ENDED FERRY 107 M



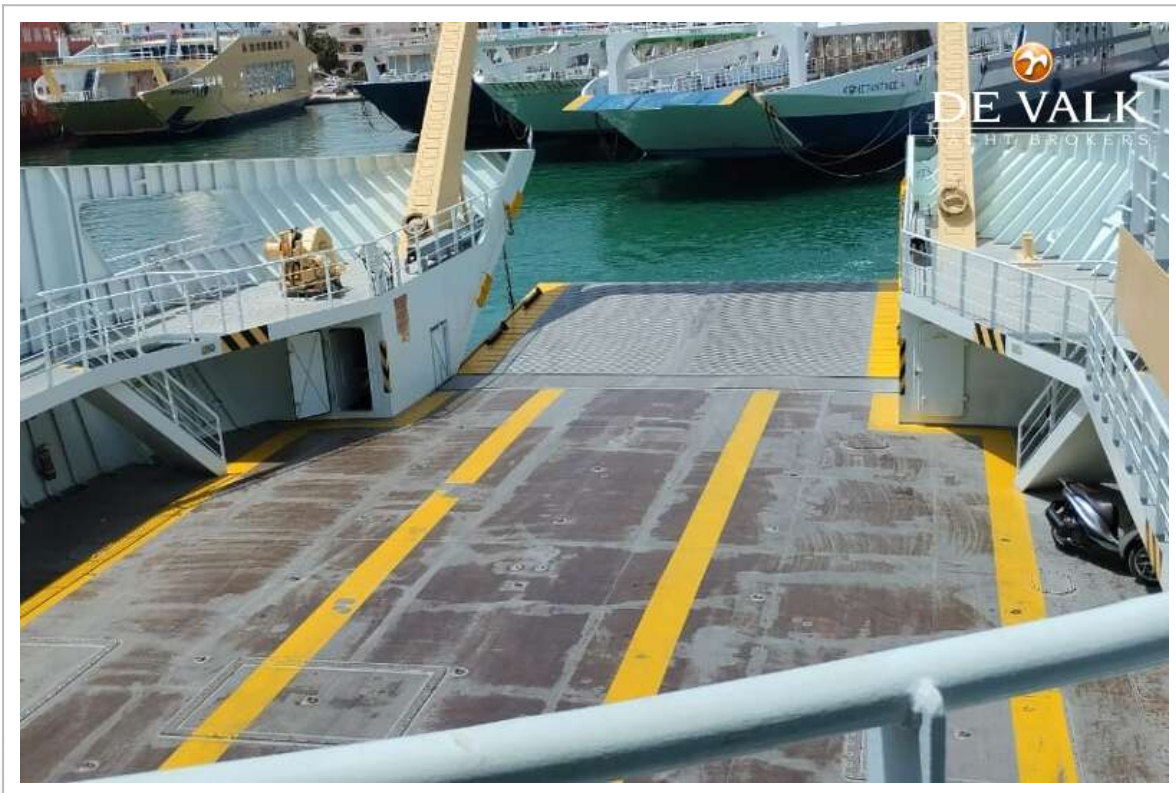
# RO/PAX DOUBLE ENDED FERRY 107 M



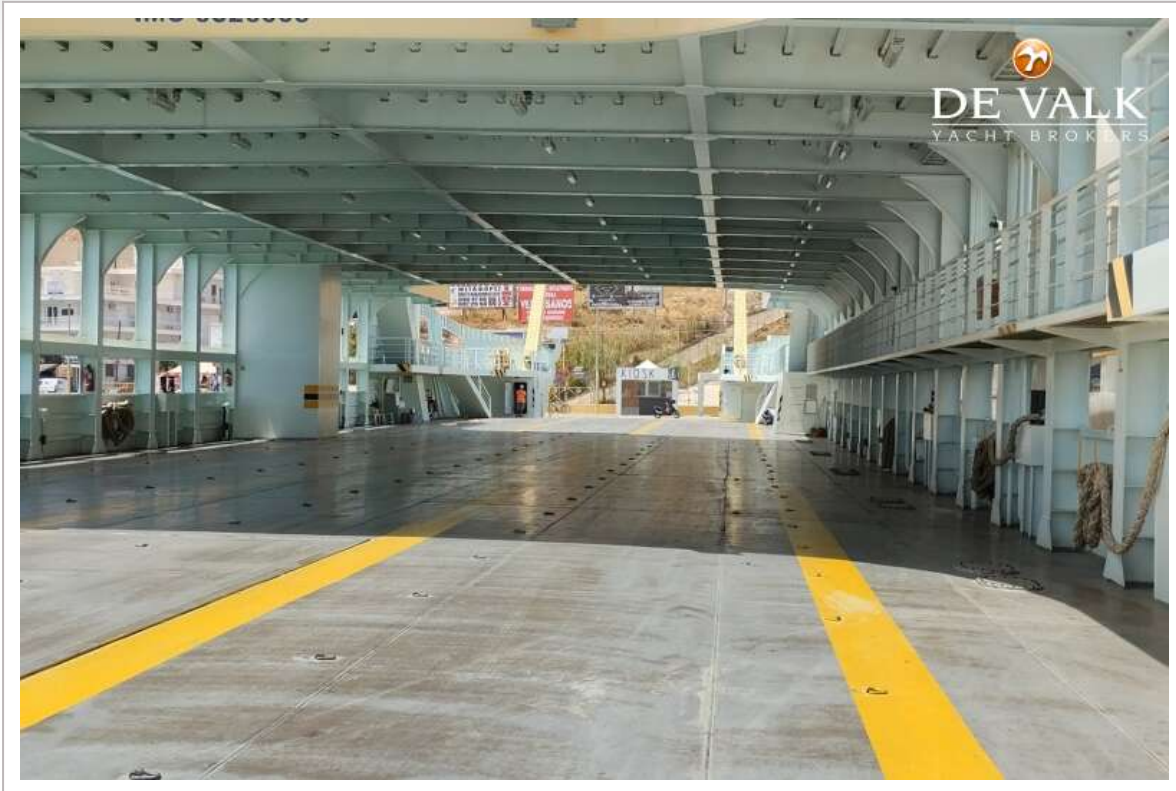
# RO/PAX DOUBLE ENDED FERRY 107 M



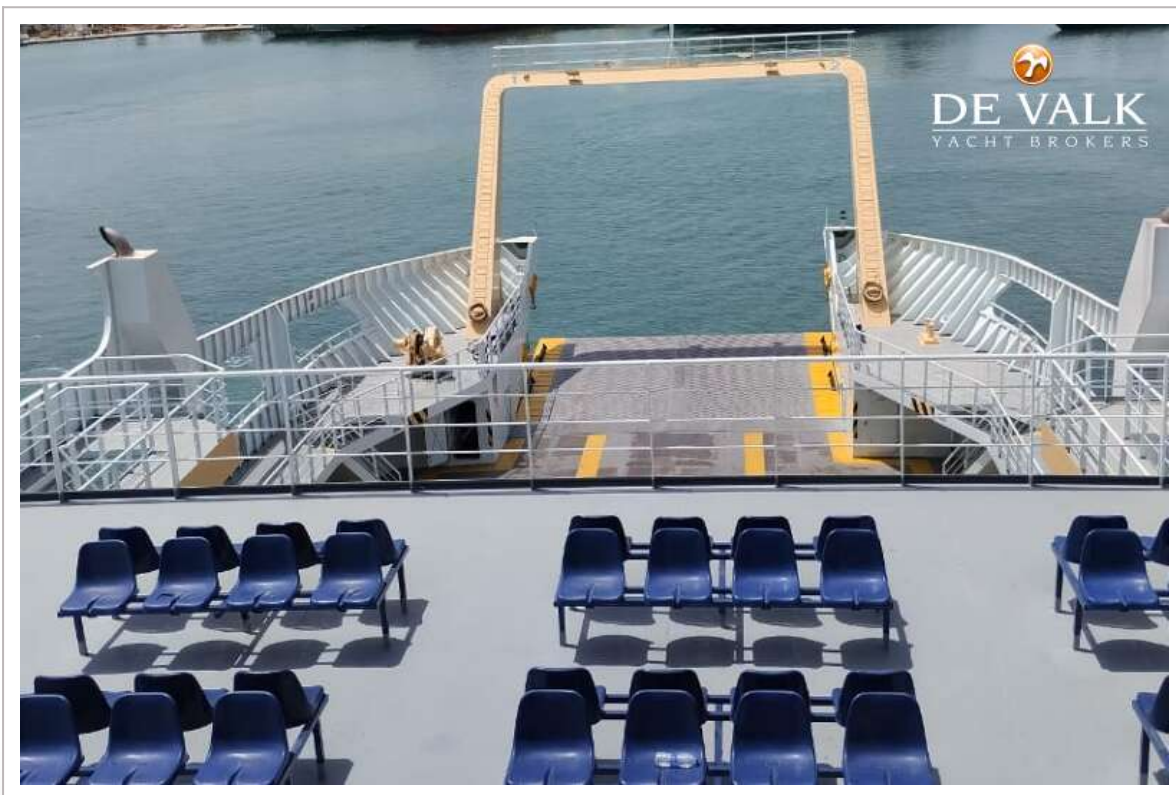
# RO/PAX DOUBLE ENDED FERRY 107 M



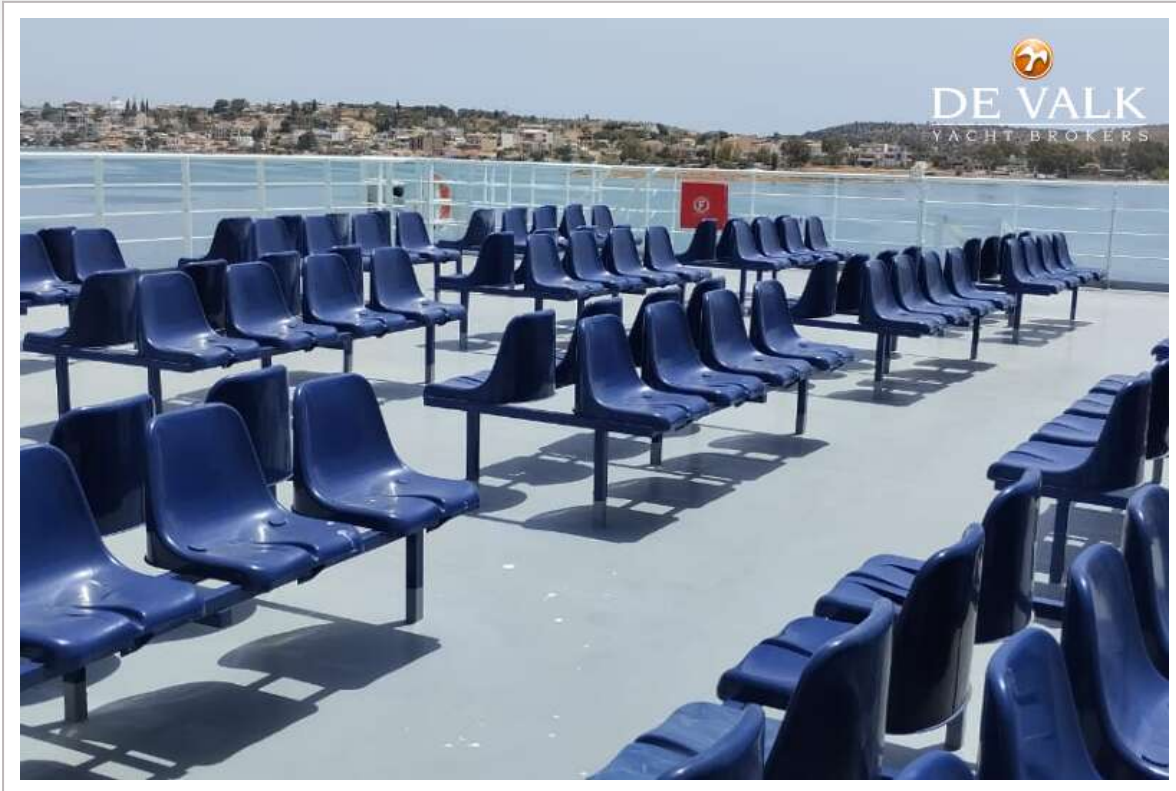
# RO/PAX DOUBLE ENDED FERRY 107 M



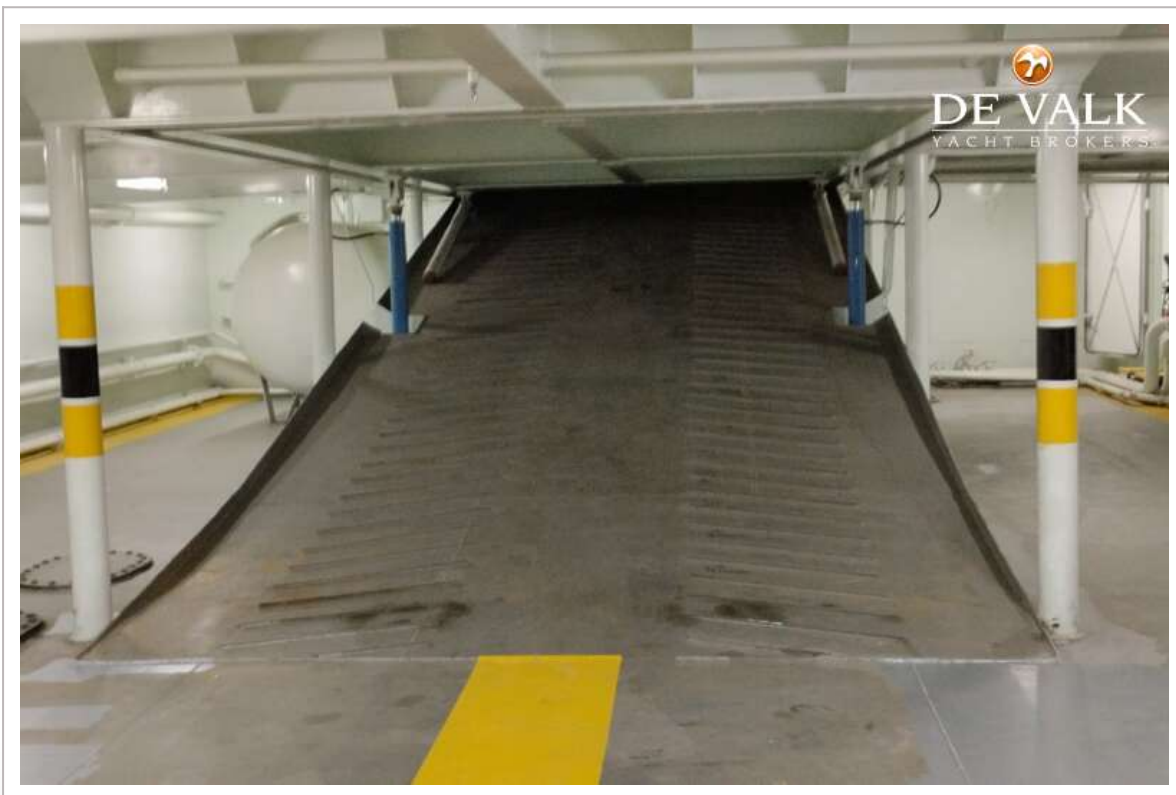
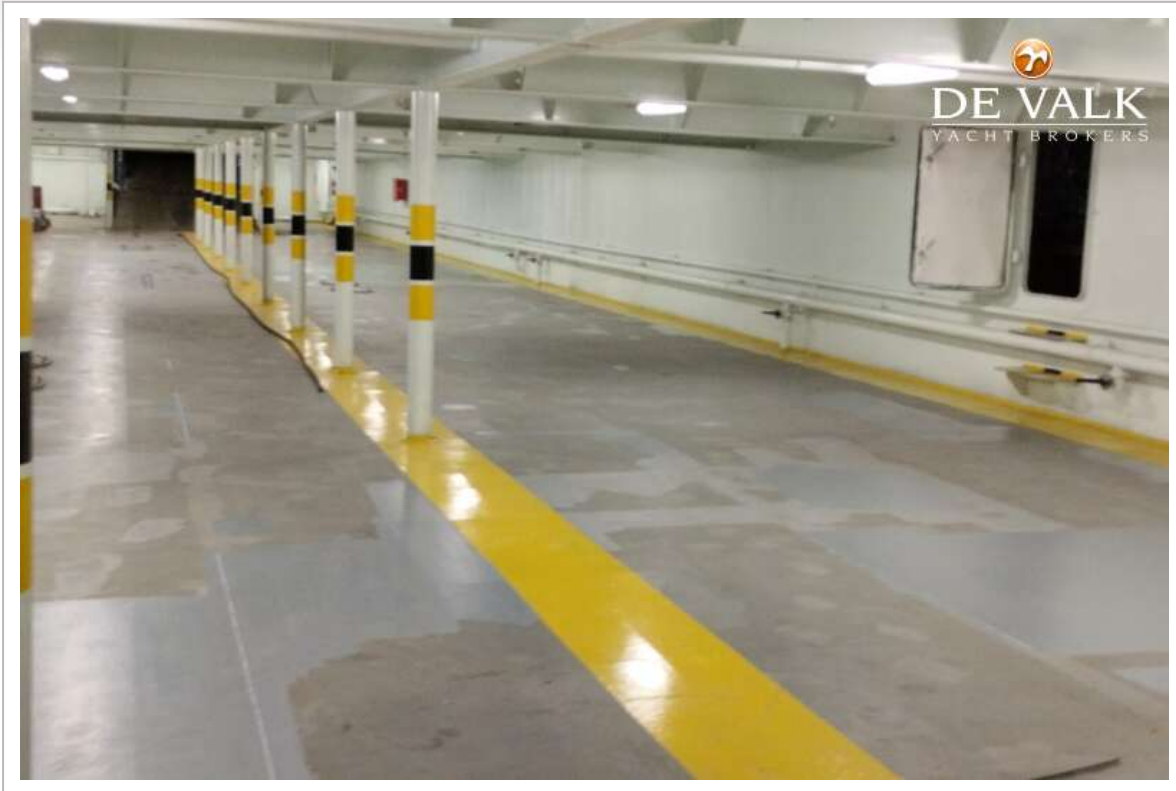
# RO/PAX DOUBLE ENDED FERRY 107 M



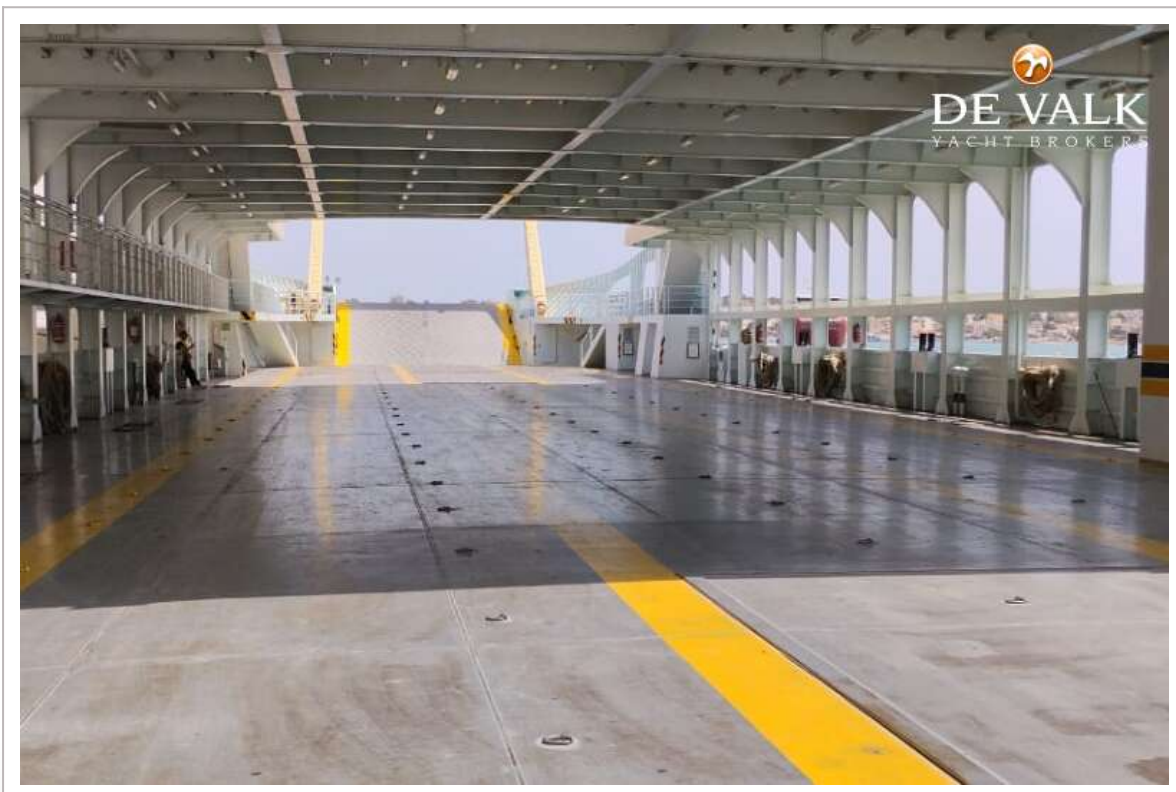
# RO/PAX DOUBLE ENDED FERRY 107 M



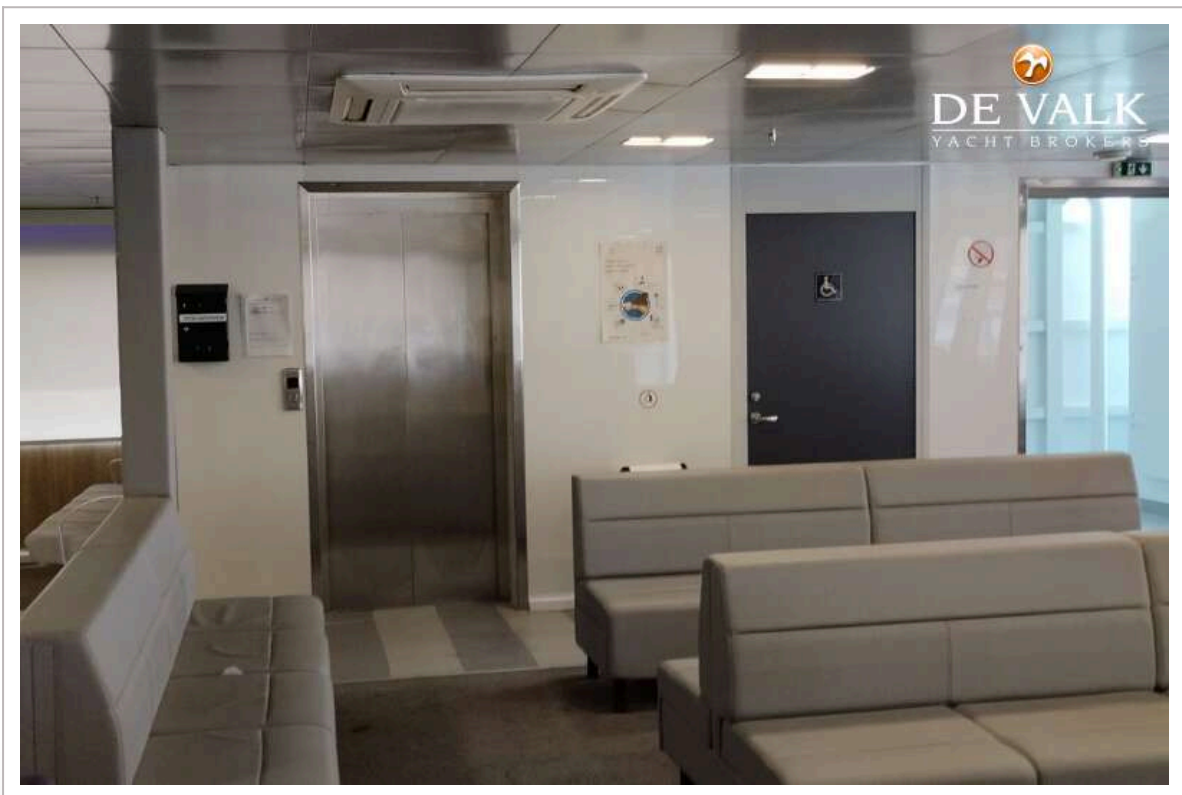
# RO/PAX DOUBLE ENDED FERRY 107 M



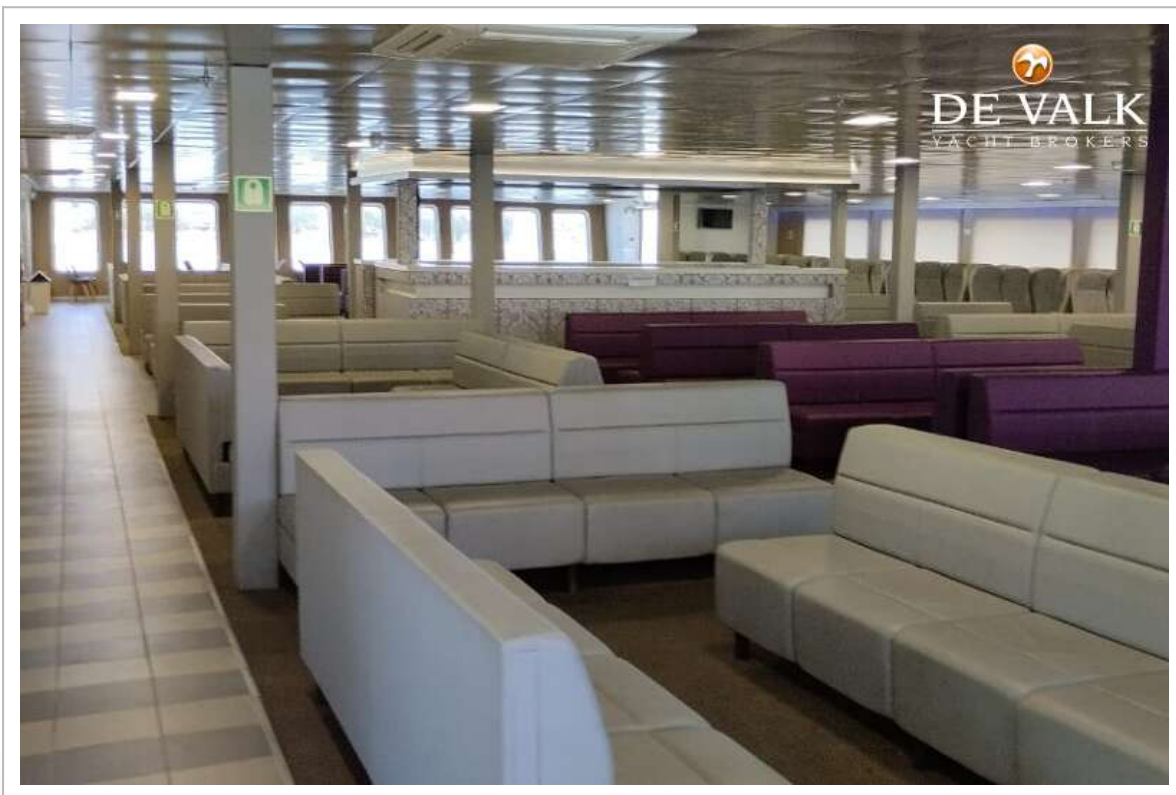
# RO/PAX DOUBLE ENDED FERRY 107 M



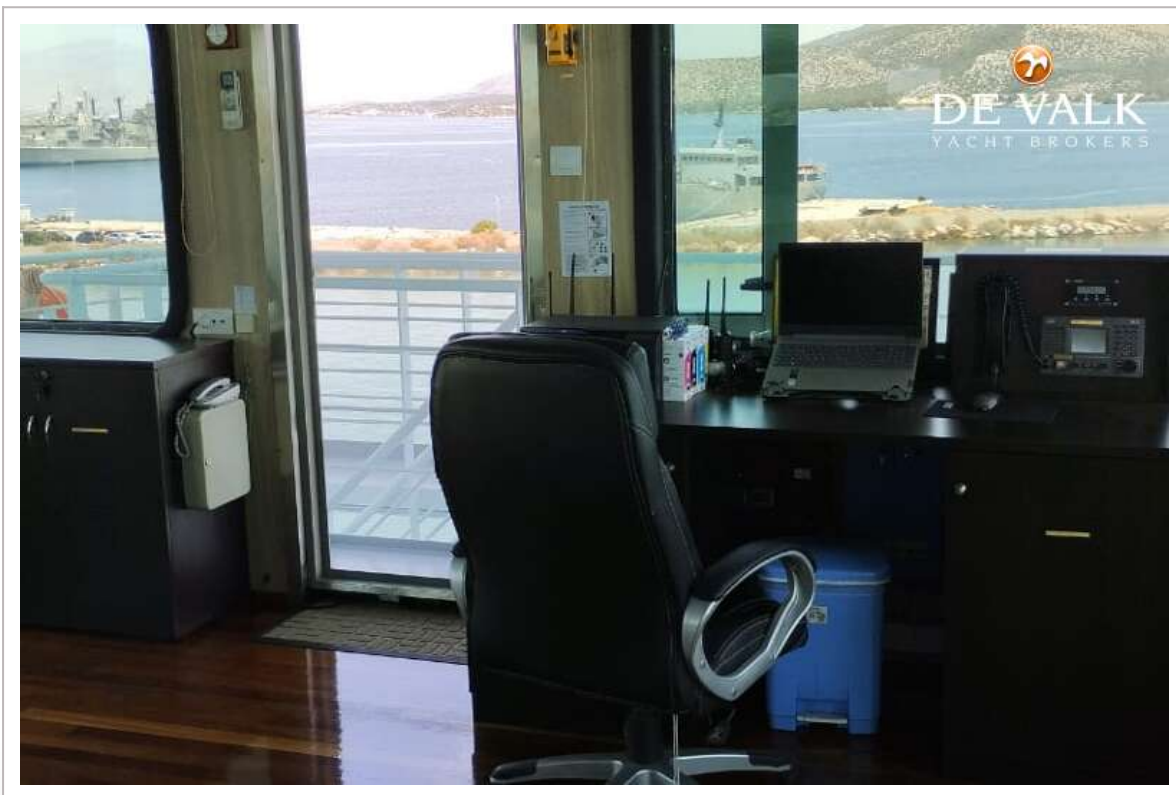
# RO/PAX DOUBLE ENDED FERRY 107 M



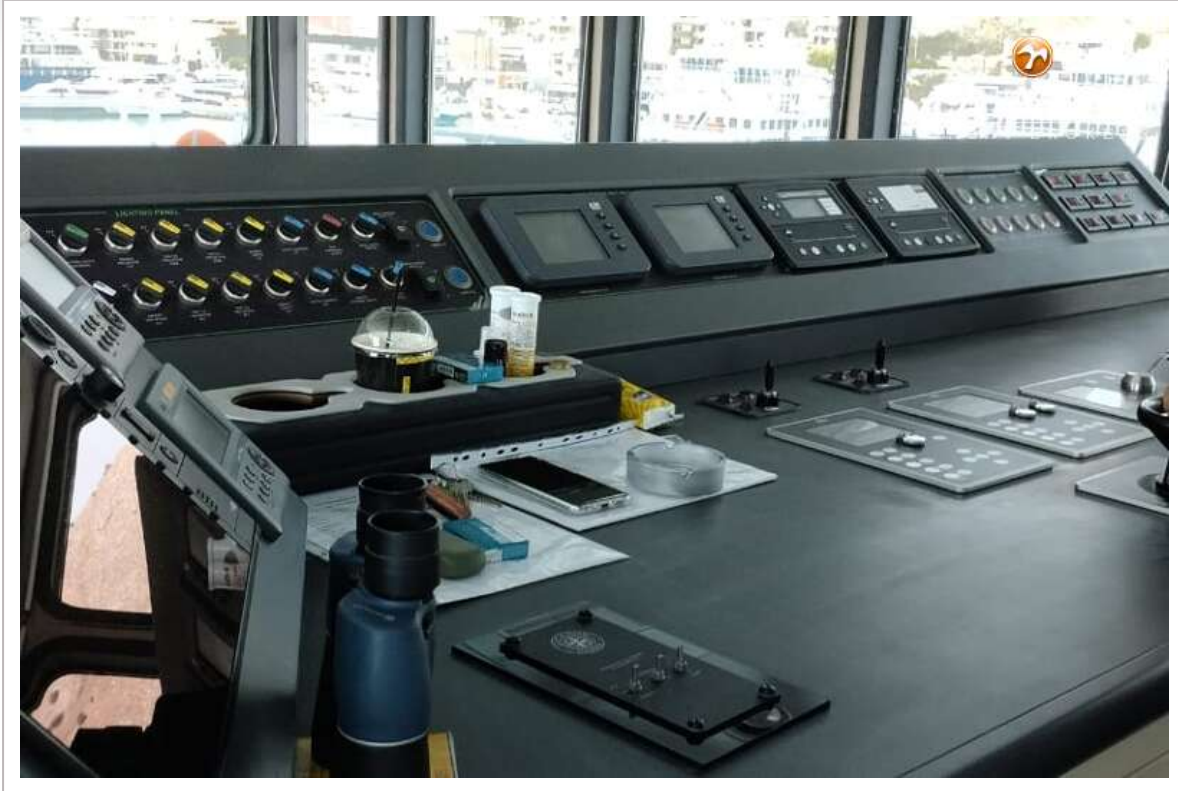
# RO/PAX DOUBLE ENDED FERRY 107 M



# RO/PAX DOUBLE ENDED FERRY 107 M



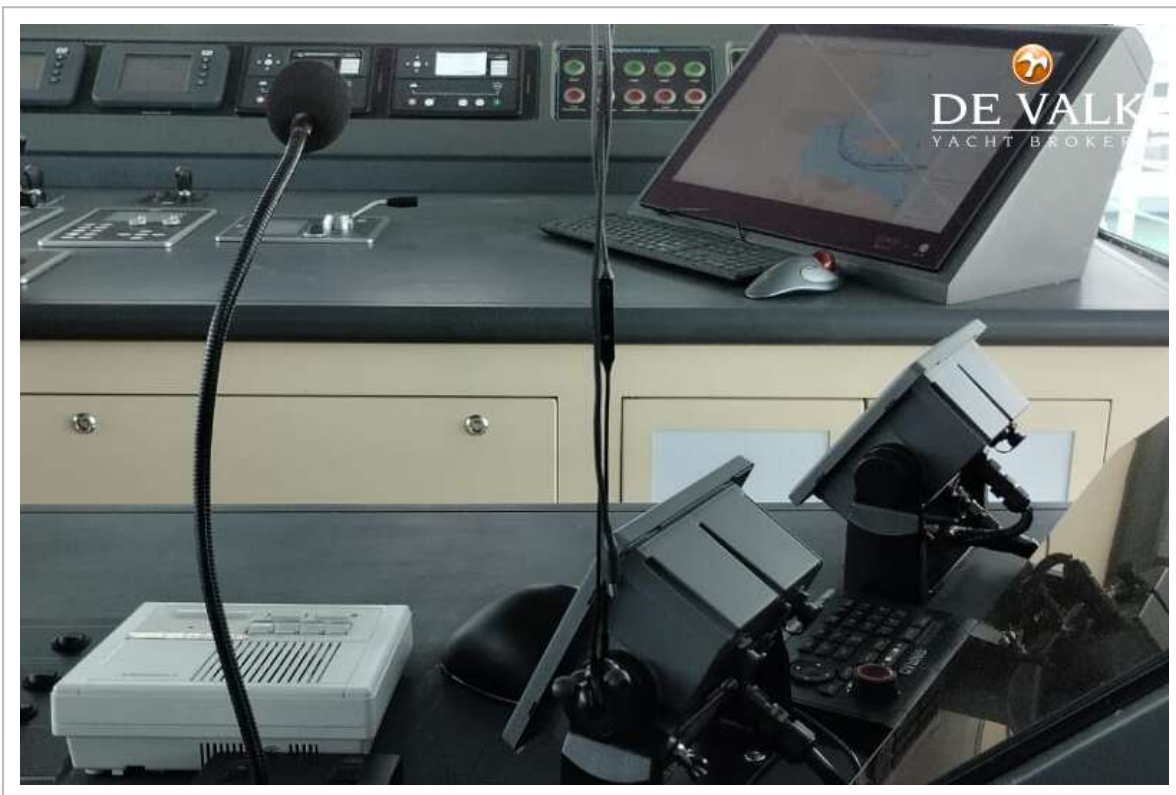
# RO/PAX DOUBLE ENDED FERRY 107 M



# RO/PAX DOUBLE ENDED FERRY 107 M



# RO/PAX DOUBLE ENDED FERRY 107 M



# RO/PAX DOUBLE ENDED FERRY 107 M



# RO/PAX DOUBLE ENDED FERRY 107 M

